



Australian Government

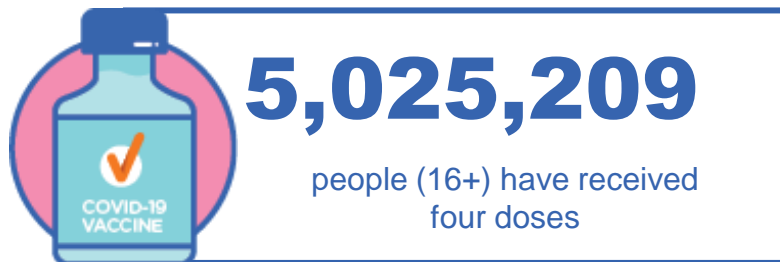
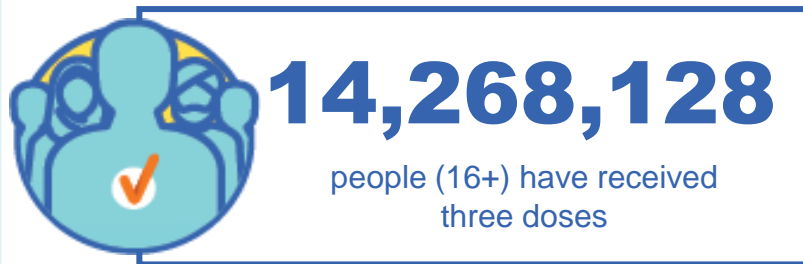
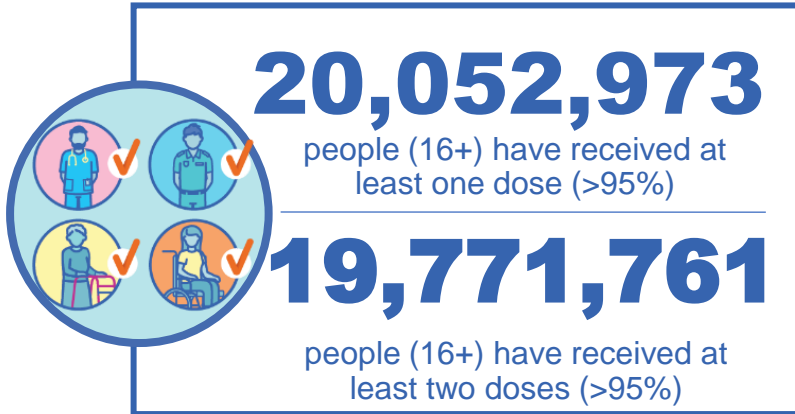
Department of Health and Aged Care

COVID-19 Vaccine Roll-out

03 November 2022

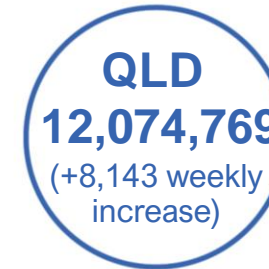
Data as at:
02 Nov 2022
Updated weekly

Total vaccine doses



63,966,167 total vaccine doses administered

+51,676 weekly increase

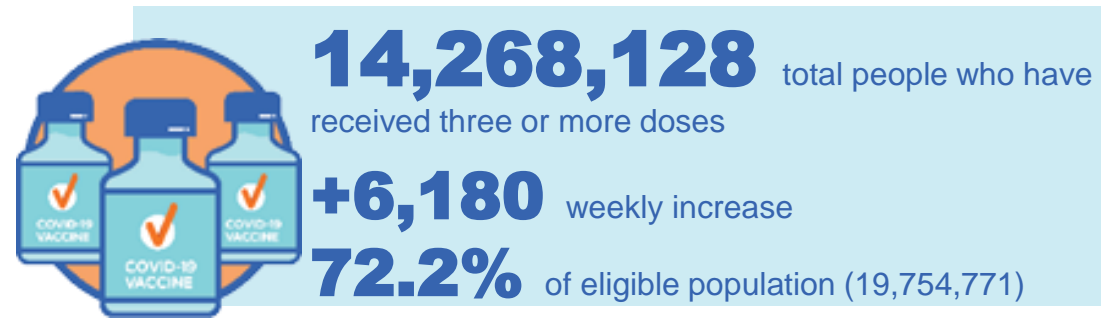
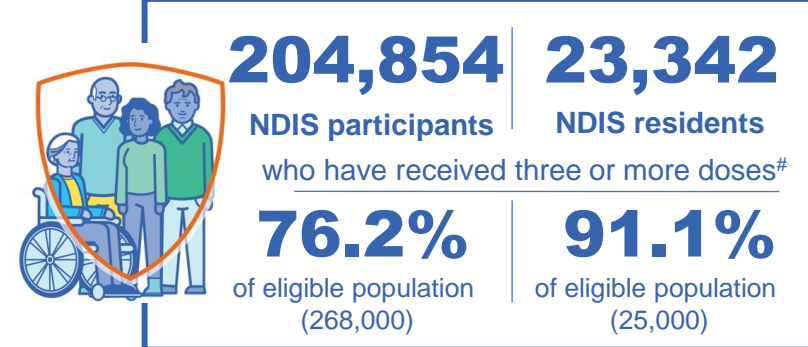
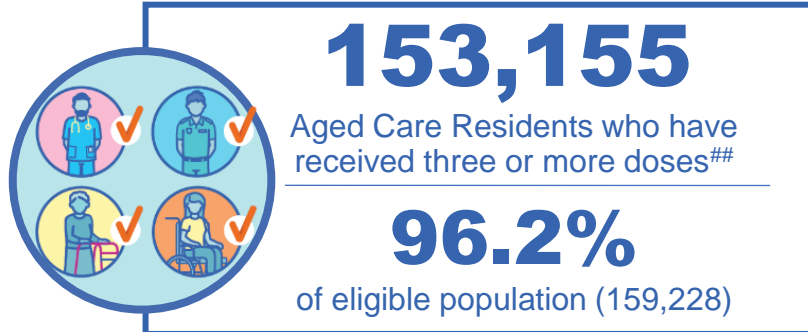
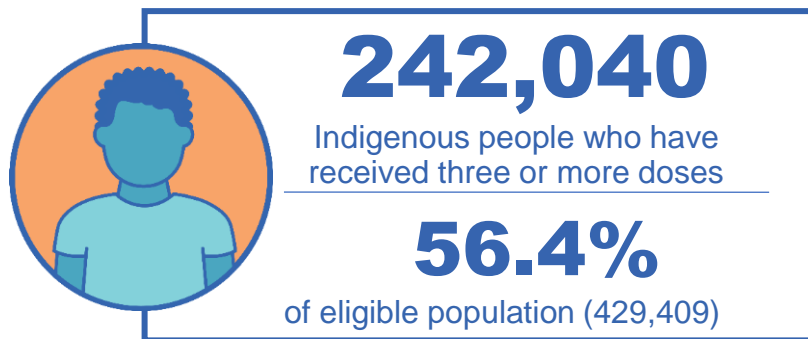


*Administration state breakdown indicates state in which a vaccine was administered

Source: Australian Immunisation Register

Third Doses

Data as at:
02 Nov 2022##
Updated weekly



	Number of People	Weekly Increase	% of Eligible
ACT	280,496	71	80.7%
NSW	4,369,874	2,409	70.2%
NT	133,168	30	79.6%
QLD	2,481,498	1,492	65.2%
SA	1,024,474	398	76.1%
TAS	324,452	106	74.6%
VIC	3,789,488	1,224	74.3%
WA	1,728,465	673	83.5%

136,213 doses administered to persons residing in other territories or with missing residential information


*People may belong to multiple groups and could be represented in the above breakdowns multiple times.
#NDIS participants data as at 30 October 2022. ##Aged Care Residents data as at 03 November 2022.

Source: Australian Immunisation Register

Fourth Doses

Data as at:
02 Nov 2022#
Updated weekly

Australia's COVID-19
Vaccine Program



123,430
Aged Care Residents who have received four or more doses#

83.2%
of eligible population (148,364)



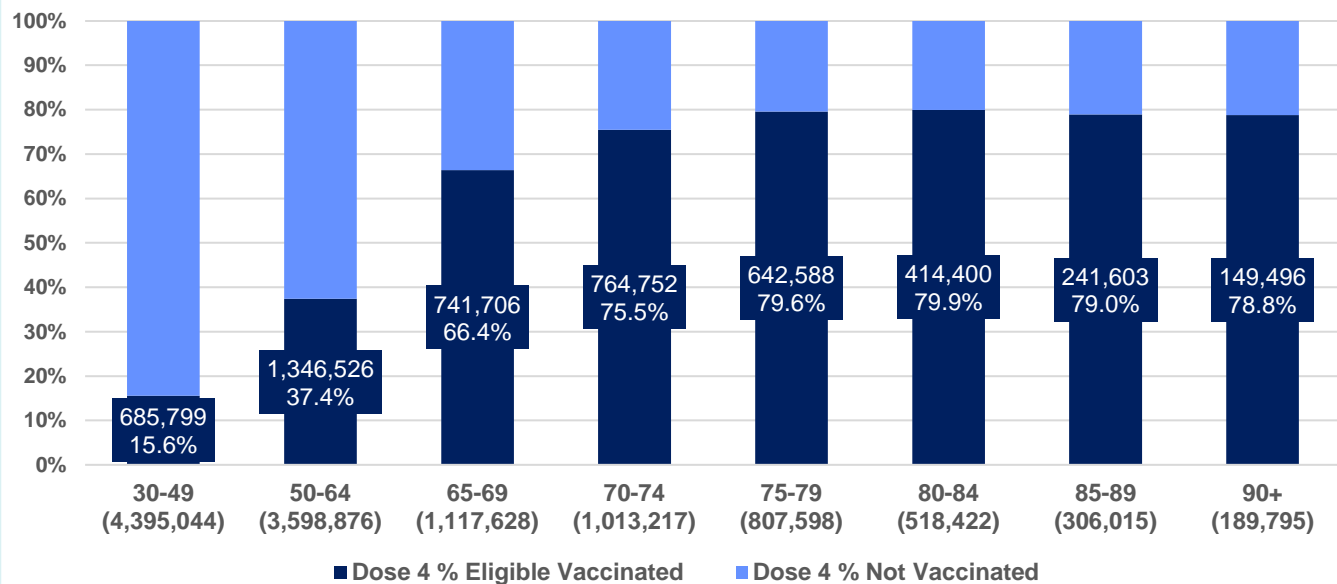
5,025,209
+28,898
41.7%
2,954,545
74.7%

total people (16+) who have received four doses
weekly increase (16+)

of eligible population (30+) (11,946,595)

total people (65+) who have received four doses
of eligible population (65+) (3,952,675)

% Individuals eligible vaccinated by current age



	Number of People 16+	Weekly Increase
ACT	107,425	1,010
NSW	1,607,148	8,373
NT	26,240	243
QLD	961,027	4,443
SA	397,654	2,871
TAS	135,078	851
VIC	1,244,947	7,231
WA	515,012	3,644

30,678 doses administered to persons residing in other territories or with missing residential information

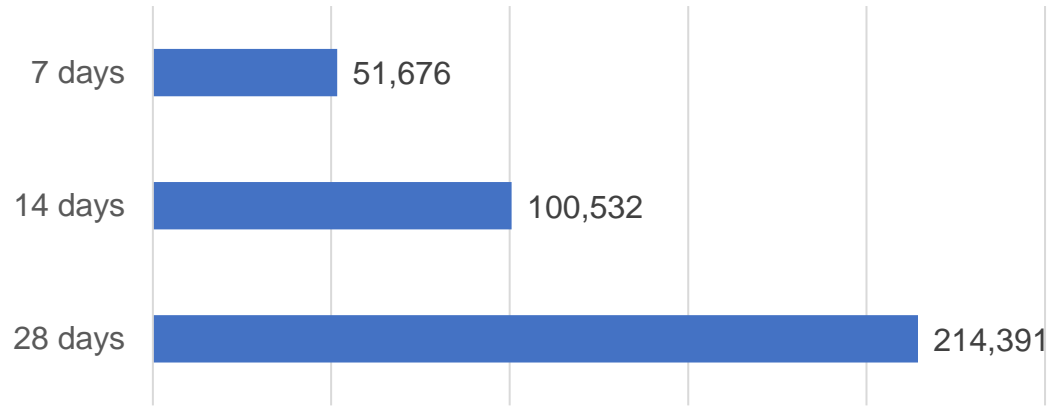
*People become eligible for a fourth dose three months after their third dose. Individuals may belong to multiple groups and could be represented in the above multiple times.
#Aged Care Residents data as at 03 November 2022.

Source: Australian Immunisation Register

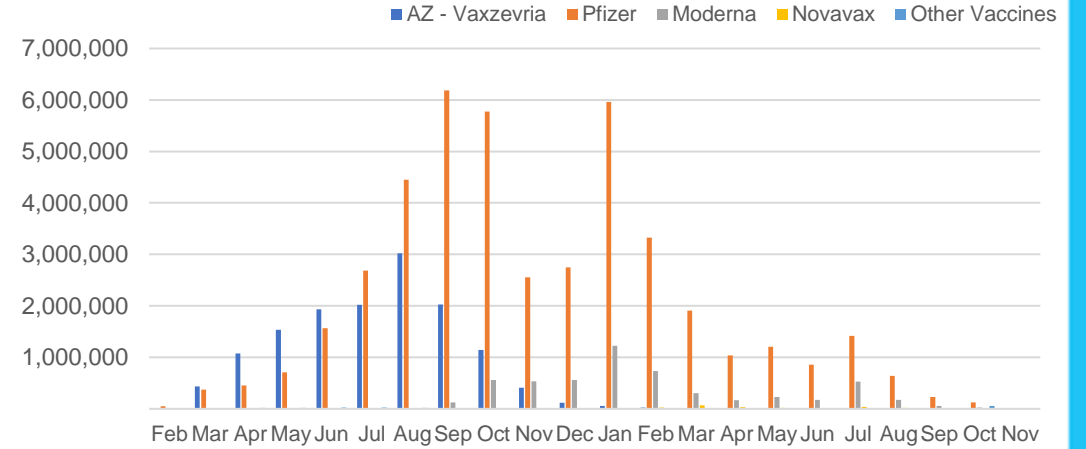
Vaccine milestone charts

Data as at:
02 Nov 2022
Updated weekly

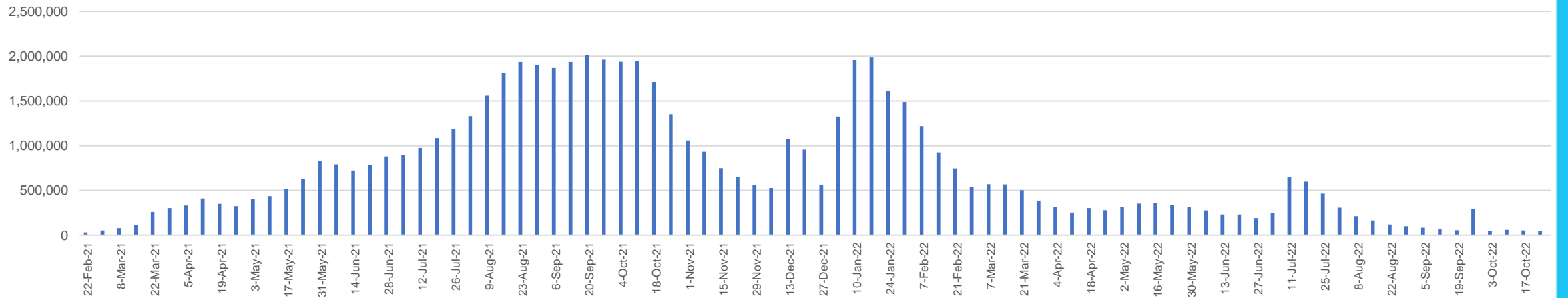
Doses Reported



Doses by administration month and vaccine type



Doses Administered by Week



*Sourced from the Australian Immunisation Register.

Data as at:
02 Nov 2022
Updated weekly

Doses by age and jurisdiction

	AUS	ACT	NSW	NT	QLD	SA	TAS	VIC	WA
5 to 11 - dose 1	1,152,906	30,868	345,669	12,168	198,333	80,429	27,267	313,252	134,213
5 to 11 - dose 2	912,984	27,406	282,609	8,668	151,371	64,435	22,743	247,621	102,735
5 to 11 - population	2,269,663	40,719	711,525	25,120	476,567	149,048	45,549	568,488	252,235
5 to 11 % with dose 1	50.80%	75.81%	48.58%	48.44%	41.62%	53.96%	59.86%	55.10%	53.21%
5 to 11 % with dose 2	40.23%	67.31%	39.72%	34.51%	31.76%	43.23%	49.93%	43.56%	40.73%
12 to 15 - dose 1	1,028,783	20,064	315,661	10,323	200,276	67,081	22,330	268,331	113,424
12 to 15 - dose 2	967,117	19,478	300,225	9,275	185,645	63,012	21,109	254,833	104,304
12 to 15 - population	1,279,387	20,888	399,352	13,190	278,225	85,541	27,469	313,711	140,783
12 to 15 % with dose 1	80.41%	96.06%	79.04%	78.26%	71.98%	78.42%	81.29%	85.53%	80.57%
12 to 15 % with dose 2	75.59%	93.25%	75.18%	70.32%	66.72%	73.66%	76.85%	81.23%	74.09%
16 and over - dose 1	20,052,973	352,861	6,307,557	171,276	3,865,929	1,373,192	442,708	5,161,954	2,097,362
16 and over - dose 2	19,771,761	347,988	6,225,625	167,414	3,809,699	1,348,076	435,057	5,101,930	2,071,477
16 and over - dose 3	14,268,128	280,496	4,369,874	133,168	2,481,498	1,024,474	324,452	3,789,488	1,728,465
16 and over - population	20,629,070	364,811	6,504,442	193,211	4,161,009	1,471,062	465,436	5,279,175	2,185,967
16 and over % with dose 1	97.21%	96.72%	96.97%	88.65%	92.91%	93.35%	95.12%	97.78%	95.95%
16 and over % with dose 2	95.84%	95.39%	95.71%	86.65%	91.56%	91.64%	93.47%	96.64%	94.76%
16 and over % with dose 3	69.17%	76.89%	67.18%	68.92%	59.64%	69.64%	69.71%	71.78%	79.07%
30 and over - dose 1	15,666,849	272,809	4,954,363	126,811	3,018,402	1,090,967	351,317	4,025,178	1,641,851
30 and over - dose 2	15,482,600	269,549	4,899,125	124,651	2,983,178	1,075,711	346,561	3,983,945	1,625,149
30 and over - dose 3	12,067,923	229,869	3,729,093	104,677	2,159,348	875,661	280,235	3,163,631	1,423,841
30 and over - dose 4	4,986,870	106,166	1,593,602	25,726	955,159	395,656	134,213	1,234,318	511,854
30 and over - population	16,012,407	268,806	5,065,001	140,954	3,219,394	1,157,853	368,927	4,079,079	1,709,089
30 and over % with dose 1	97.84%	>99%	97.82%	89.97%	93.76%	94.22%	95.23%	98.68%	96.07%
30 and over % with dose 2	96.69%	>99%	96.73%	88.43%	92.66%	92.91%	93.94%	97.67%	95.09%
30 and over % with dose 3	75.37%	85.51%	73.62%	74.26%	67.07%	75.63%	75.96%	77.56%	83.31%
30 and over % with dose 4	31.14%	39.50%	31.46%	18.25%	29.67%	34.17%	36.38%	30.26%	29.95%
65 and over - dose 1	4,354,144	63,925	1,407,760	20,341	845,538	347,613	113,944	1,086,149	427,590
65 and over - dose 2	4,318,240	63,209	1,396,307	20,090	839,639	345,059	113,274	1,076,866	424,761
65 and over - dose 3	3,970,590	59,927	1,271,746	18,276	771,615	323,554	106,868	982,650	403,188
65 and over - dose 4	2,954,545	49,462	941,160	11,448	587,973	249,880	84,049	712,429	297,875
65 and over - population	4,313,779	60,463	1,393,416	21,593	864,448	352,458	116,037	1,072,562	431,884
65 and over % with dose 1	>99%	>99%	>99%	94.20%	97.81%	98.63%	98.20%	>99%	>99%
65 and over % with dose 2	>99%	>99%	>99%	93.04%	97.13%	97.90%	97.62%	>99%	98.35%
65 and over % with dose 3	92.04%	>99%	91.27%	84.64%	89.26%	91.80%	92.10%	91.62%	93.36%
65 and over % with dose 4	68.49%	81.81%	67.54%	53.02%	68.02%	70.90%	72.43%	66.42%	68.97%

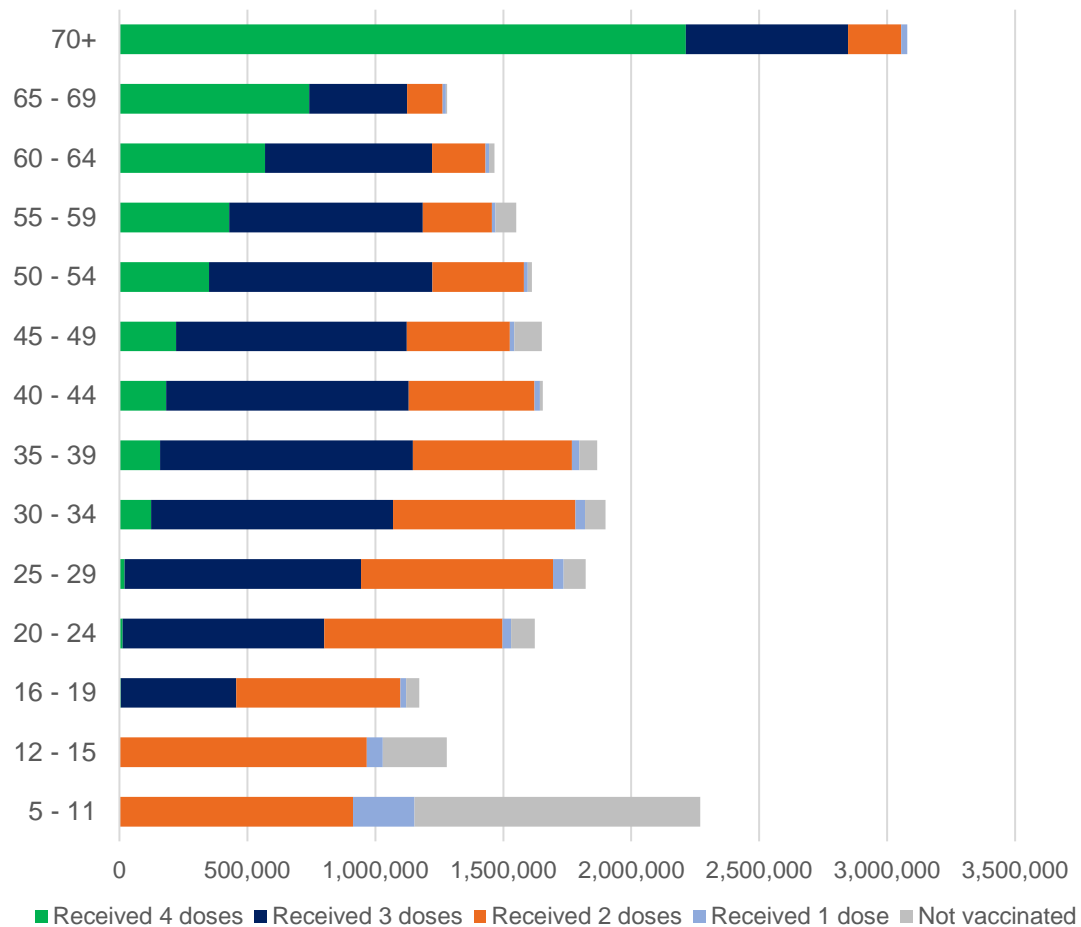
*National population will not equal sum of listed jurisdictions due to a small number of people counted in national population residing in some 'other' territories. Sum of state doses will not add to national total as some records are unable to be geocoded to a State or Territory.

Doses sourced from Australian Immunisation Register, population from ABS ERP June 2021

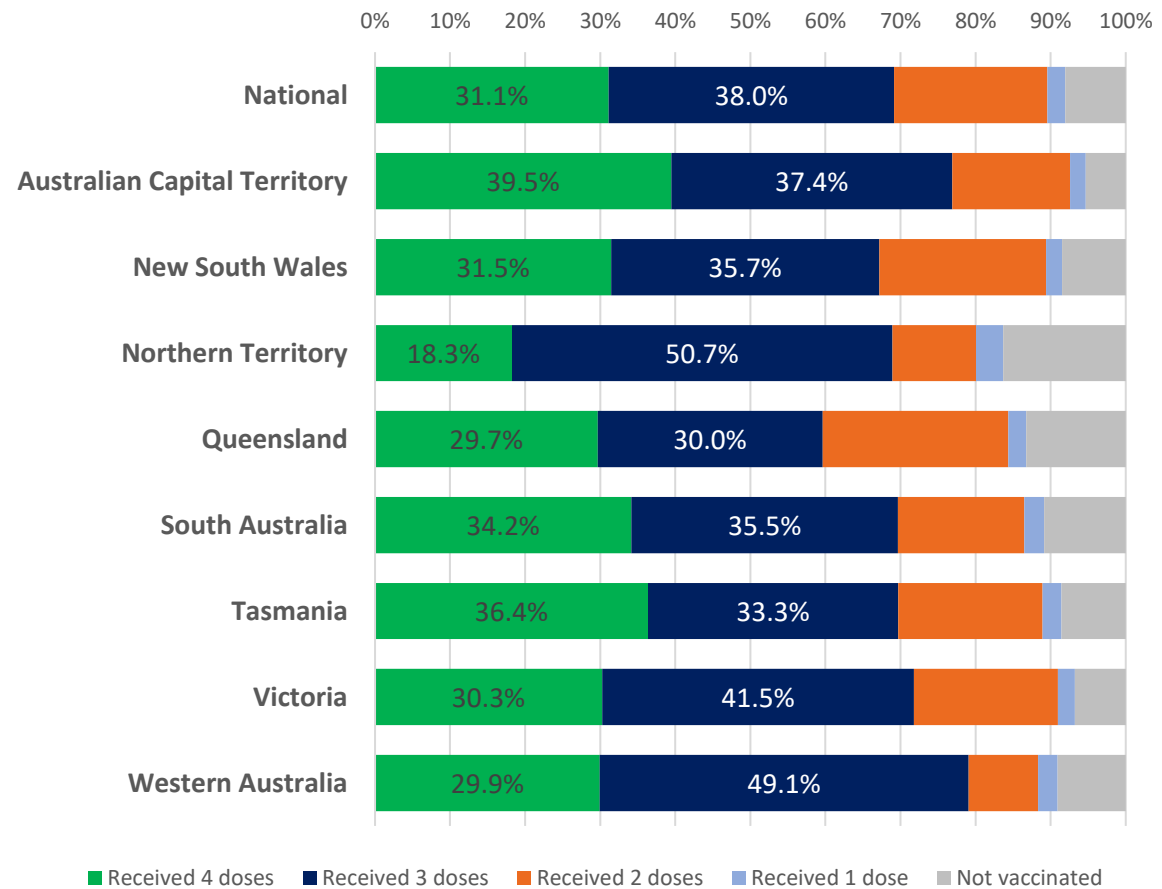
Data as at:
02 Nov 2022
Updated weekly

Vaccinations by age and location

Number of people vaccinated by age

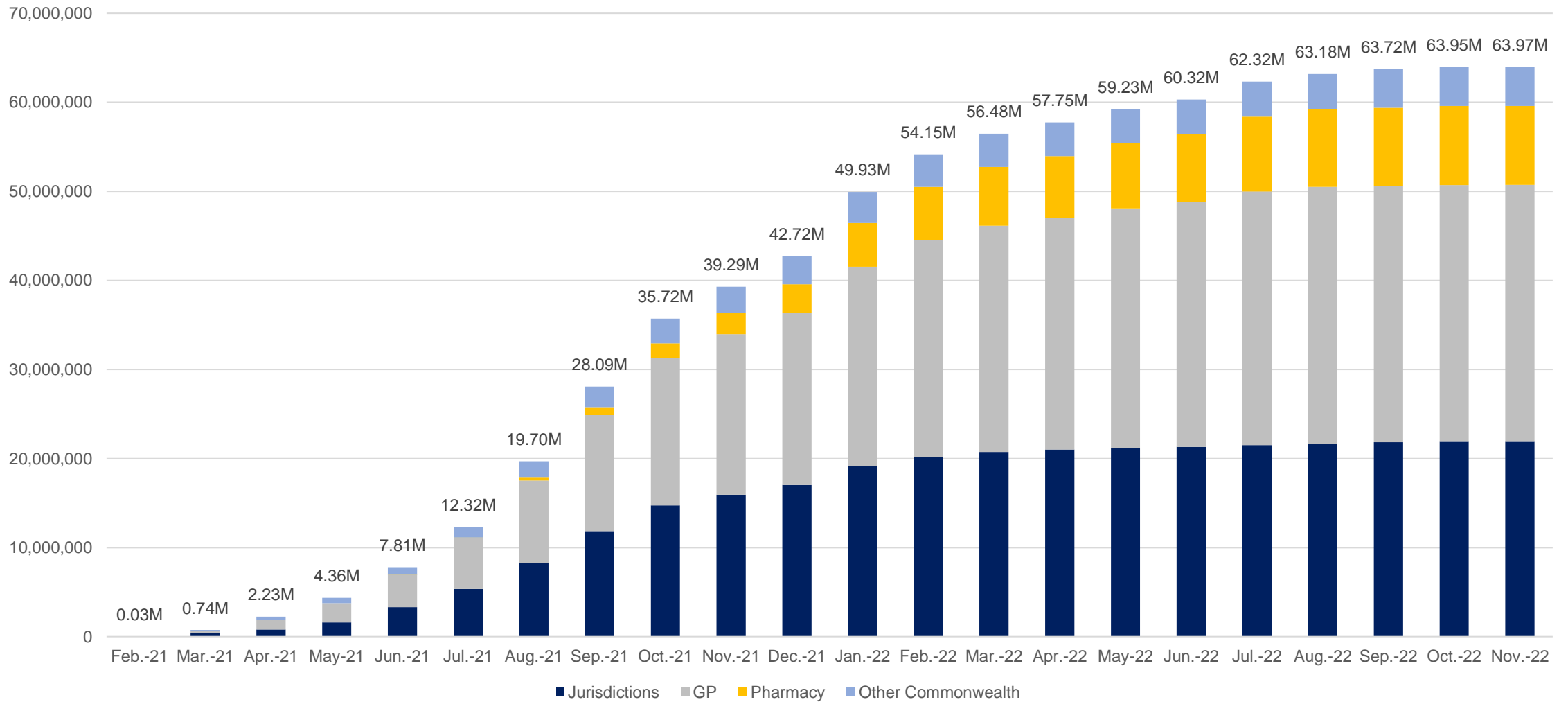


Individuals vaccinated by residential location



Data as at:
02 Nov 2022
Updated weekly

Cumulative doses administered by channel



Source: Australian Immunisation Register

Data as at:
02 Nov 2022
Updated weekly

Commonwealth primary care



Primary care vaccine administration sites#

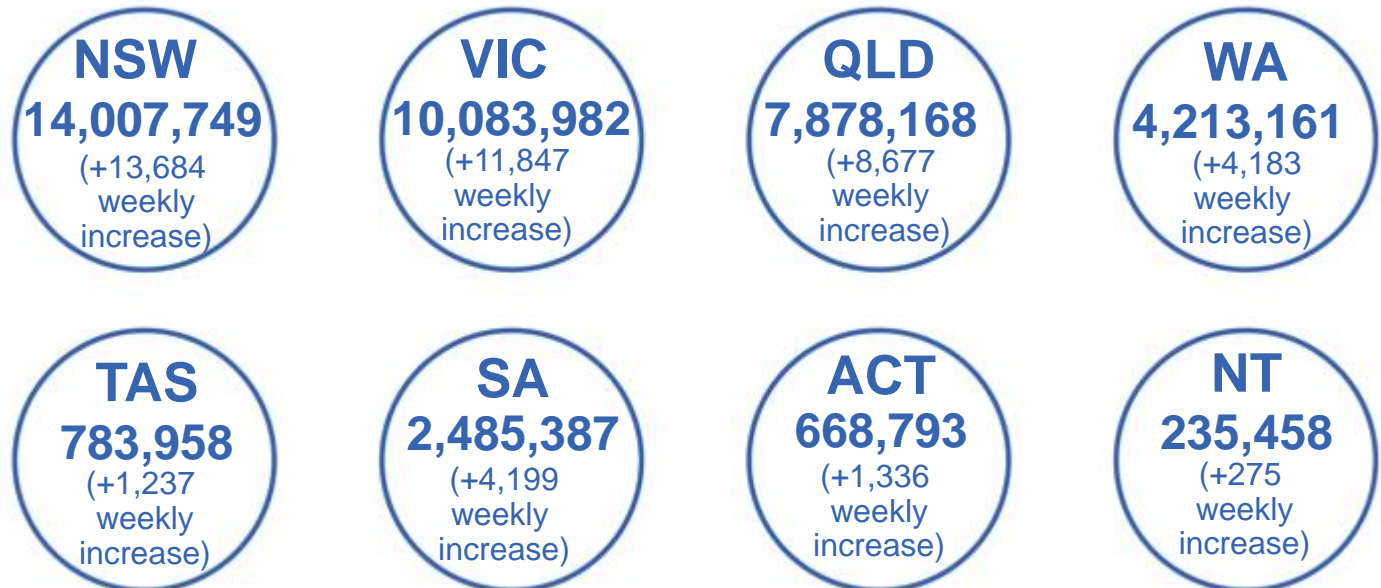
3,687	68	132	2,747
GPs	CVCs	ACCHS	Pharmacies



40,739,461 total vaccine doses administered
in primary care settings
+44,870 weekly increase

Primary care vaccinations by provider type

	Doses administered	Weekly increase
General Practice*	31,787,846	21,558
Pharmacy	8,951,615	23,312



382,805 doses administered to persons residing in other territories or with missing residential information

*General practice includes Commonwealth Vaccination Clinics, Aboriginal Community Health Centres, Royal Flying Doctor Service and other Commonwealth vaccination facilities
Primary care site numbers are reported as at 31 October 2022 and only include active sites.

Source: Australian Immunisation Register

Aboriginal and Torres Strait Islander peoples

Number of people vaccinated


Data as at:
02 Nov 2022
Updated weekly

Australia's COVID-19
Vaccine Program




People (16+) with at least one dose
448,152 85.5%

People (16+) with at least two doses
430,909 82.2%



Eligible people (16+) with three doses
242,040 56.4%

Eligible people (30+) with four doses
60,953 33.8%



People (12-15) with at least one dose
46,461 65.9%

People (12-15) with at least two doses
40,336 57.2%

137 Aboriginal community controlled health services (ACCHS) sites

0#	31	22	40	13	2	10	19
ACT	NSW	NT	QLD	SA	TAS	VIC	WA

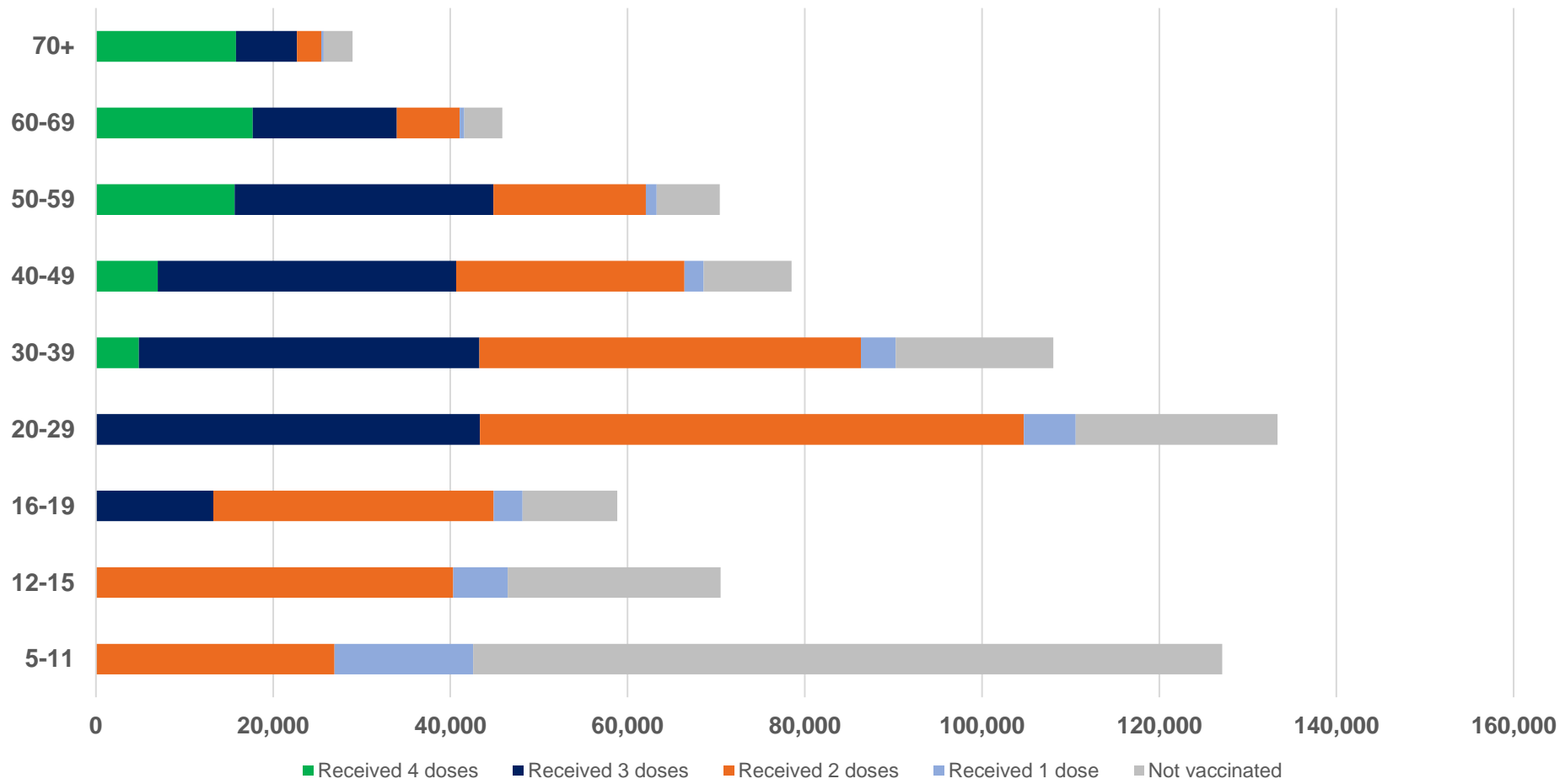
Residential State	Individuals Dose 1 % (16+)	Individuals Dose 2 % (16+)	Individuals Dose 3 % Eligible (aged 16+)	Individuals Dose 4 % Eligible (aged 30+)
ACT	92.2%	90.0%	65.4%	39.4%
NSW	87.9%	86.0%	53.0%	37.1%
NT	90.2%	86.1%	70.2%	24.9%
QLD	82.4%	78.8%	49.0%	36.1%
SA	81.3%	76.1%	61.0%	37.1%
TAS	89.2%	86.9%	60.2%	40.2%
VIC	90.9%	89.0%	62.2%	34.9%
WA	87.6%	82.2%	66.5%	28.8%
Unknown/Other Territories	73.4%	68.3%	50.9%	23.3%
National Coverage %	85.5%	82.2%	56.4%	33.8%
Number with a Dose	448,152	430,909	242,040	60,953
Total / Eligible Population	523,981	523,981	429,409	180,279

Identifying as Aboriginal and Torres Strait Islander is optional and the estimated population may be under reported. Numbers include all Aboriginal and Torres Strait Islander peoples who have received a vaccination, and are not limited to those administered in an ACCHS setting. The total population refers to the number of individuals that identify as Aboriginal and Torres Strait Islander in the Australian Immunisation Register, while the eligible population refers to the number of these individuals who meet the criteria for a further dose (based on completion of previous doses, age, and time period elapsed since last dose). Please note there may be people under 30 who are eligible, but these are not included in coverage rates or population to protect privacy.
#ACCHS in the ACT are currently operating as Commonwealth Vaccine Clinics so not included to avoid double counting.

Aboriginal and Torres Strait Islander peoples

Number of people vaccinated by age

Data as at:
02 Nov 2022
Updated weekly



Source: Australian Immunisation Register

Individuals with Culturally and Linguistically Diverse (CALD) backgrounds data

Data as at:
23 Oct 2022
Updated weekly

Australia's COVID-19
Vaccine Program

People over the age of 16

CALD population *	Total number of individuals in cohort	% People with at least one dose	% People who received two doses	% of eligible people who received three or more doses
General population	20,629,070	>95.0%	>95.0%	72.2%
People born overseas	4,339,180	94.6%	94.1%	73.3%
Speaks a language other than English at home	4,011,622	94.2%	93.6%	69.3%

	General population			Born Overseas			Speaks a language other than English at home		
	% with at least one dose	% who received two doses	% of eligible people who received three or more doses	% with at least one dose	% who received two doses	% of eligible people who received three or more doses	% with at least one dose	% who received two doses	% of eligible people who received three or more doses
ACT	>95.0%	>95.0%	80.7%	>95.0%	>95.0%	79.0%	>95.0%	>95.0%	76.3%
NSW	>95.0%	>95.0%	70.2%	>95.0%	94.5%	70.8%	94.2%	93.6%	66.2%
NT	88.7%	86.7%	79.6%	>95.0%	>95.0%	88.3%	94.3%	93.9%	87.1%
Qld	92.9%	91.5%	65.2%	92.3%	91.6%	67.8%	92.6%	91.8%	64.3%
SA	93.3%	91.6%	76.1%	92.9%	92.0%	75.6%	91.9%	90.9%	71.9%
Tas	>95.0%	93.4%	74.7%	93.9%	93.3%	76.3%	93.9%	93.3%	72.4%
Vic	>95.0%	>95.0%	74.3%	>95.0%	94.8%	73.5%	94.8%	94.2%	69.7%
WA	>95.0%	94.7%	83.5%	>95.0%	94.7%	85.6%	>95.0%	94.8%	83.7%


*Individuals with Culturally and Linguistically Diverse (CALD) backgrounds are as reported in the 2021 Census, excluding those who have since departed Australia; deceased persons; those born in the UK, Ireland or NZ; and Aboriginal and/or Torres Strait Islander peoples. There is overlap across CALD cohorts where individuals may have reported they had more than one CALD characteristic in the 2021 Census.

Small negative changes may appear when compared with the previous report due to perturbation, in particular for small population groups.

Source: Australian Immunisation Register linked to the Multi-Agency Data Integration Project (Census 2021 characteristics). Coverage rates for the general population are as published for 26 October 2022.

Data as at:
03 Nov 2022
Updated weekly

Residential aged care vaccination rollout



160,472
Aged care residents with at least one dose



159,228
Aged care residents with at least two doses



153,155
Aged care residents with at least three doses



123,430
Aged care residents with at least four doses



>99%
Aged care workers with at least two doses nationally

Aged care resident vaccinations

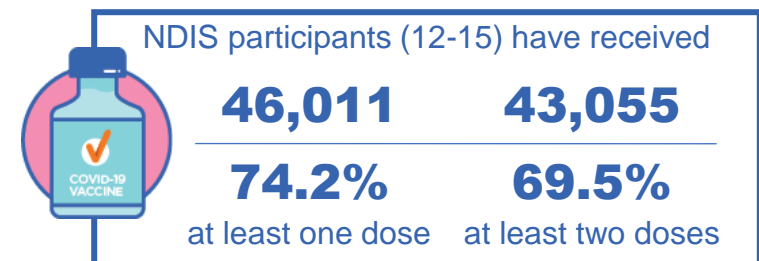
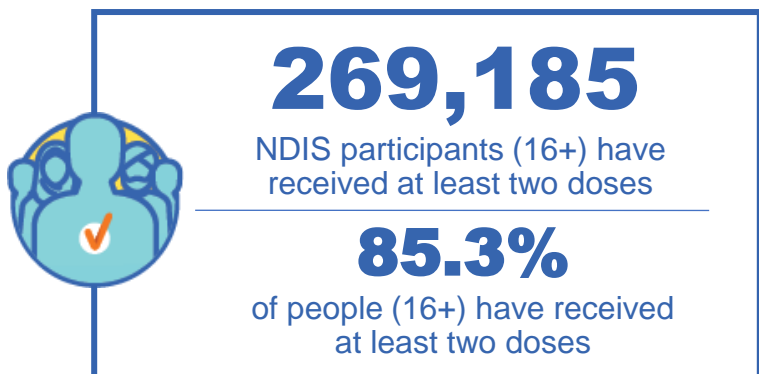
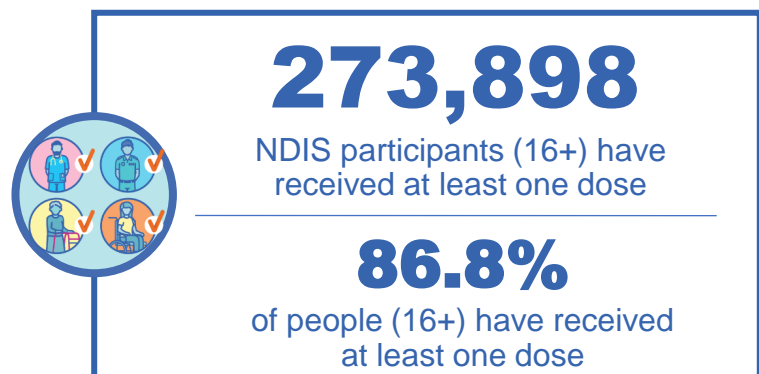
	Aged care residents with at least one dose	Aged care residents with at least two doses	Aged care residents with at least three doses	Aged care residents with at least four doses
NSW	96.9%	96.2%	92.4%	72.8%
VIC	96.8%	96.3%	93.4%	79.2%
QLD	95.0%	94.2%	90.1%	71.1%
SA	95.8%	94.6%	90.6%	72.7%
WA	96.8%	95.9%	91.9%	71.8%
TAS	95.9%	95.1%	91.5%	74.7%
NT	96.9%	95.1%	90.6%	70.1%
ACT	97.8%	97.2%	95.0%	81.9%
National	96.4%	95.6%	92.0%	74.1%

Source: Residential aged care provider self-reported COVID-19 vaccination information and matched AIR data of residents in permanent residential RACFs.

National Disability Insurance Scheme (NDIS) reported vaccinations

Data as at:
30 Oct 2022
Updated weekly

Australia's COVID-19
Vaccine Program



NDIS participant vaccinations

	% People aged 16+ with at least one dose	% People aged 16+ with at least two doses	% People aged 16+ with three doses	% People aged 16+ with four doses
ACT	89.5%	88.3%	83.6%	37.6%
NSW	87.3%	86.0%	75.3%	34.4%
NT	77.9%	75.6%	79.3%	26.6%
QLD	84.8%	83.2%	71.4%	28.8%
SA	84.7%	82.8%	78.4%	29.9%
TAS	87.3%	85.5%	76.5%	30.7%
VIC	88.0%	86.6%	77.5%	31.8%
WA	88.1%	86.5%	82.1%	32.3%
National	86.8%	85.3%	76.2%	31.9%

Source: Linkage between National Disability Insurance Agency data and the Australian Immunisation Register. Total NDIS participant numbers as at 01 November. Australian Immunisation Register data as at 30 October. Includes all participants regardless of residence type.