



Australian Government

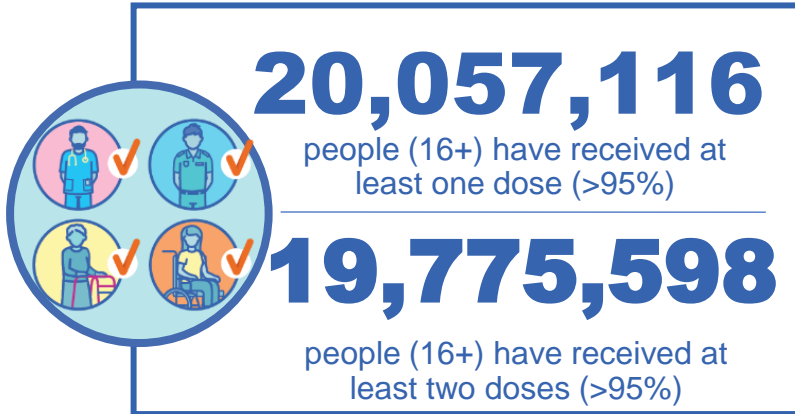
Department of Health and Aged Care

COVID-19 Vaccine Roll-out

10 November 2022

Data as at:
09 Nov 2022
Updated weekly

Total vaccine doses



64,040,557 total vaccine doses administered

+74,390 weekly increase



*Administration state breakdown indicates state in which a vaccine was administered

Source: Australian Immunisation Register

Third Doses



242,437

Indigenous people who have received three or more doses

56.4%

of eligible population (429,823)



153,229

Aged Care Residents who have received three or more doses##

96.2%

of eligible population (159,252)



205,239

NDIS participants

who have received three or more doses#

76.2%

of eligible population (269,000)

23,367

NDIS residents

who have received three or more doses#

90.9%

of eligible population (25,000)



14,275,384 total people who have received three or more doses

+7,256 weekly increase

72.2% of eligible population (19,759,684)

Data as at:
09 Nov 2022##
Updated weekly

	Number of People	Weekly Increase	% of Eligible
ACT	280,614	118	80.7%
NSW	4,372,599	2,725	70.3%
NT	133,184	16	79.6%
QLD	2,483,043	1,545	65.2%
SA	1,024,877	403	76.1%
TAS	324,557	105	74.6%
VIC	3,791,136	1,648	74.3%
WA	1,729,110	645	83.5%

136,264

doses administered to persons residing in other territories or with missing residential information


*People may belong to multiple groups and could be represented in the above breakdowns multiple times.
#NDIS participants data as at 06 November 2022. ##Aged Care Residents data as at 10 November 2022.

Source: Australian Immunisation Register

Fourth Doses

Data as at:
09 Nov 2022#
Updated weekly

Australia's COVID-19
Vaccine Program



124,176
Aged Care Residents who have received four or more doses#

83.3%
of eligible population (149,124)



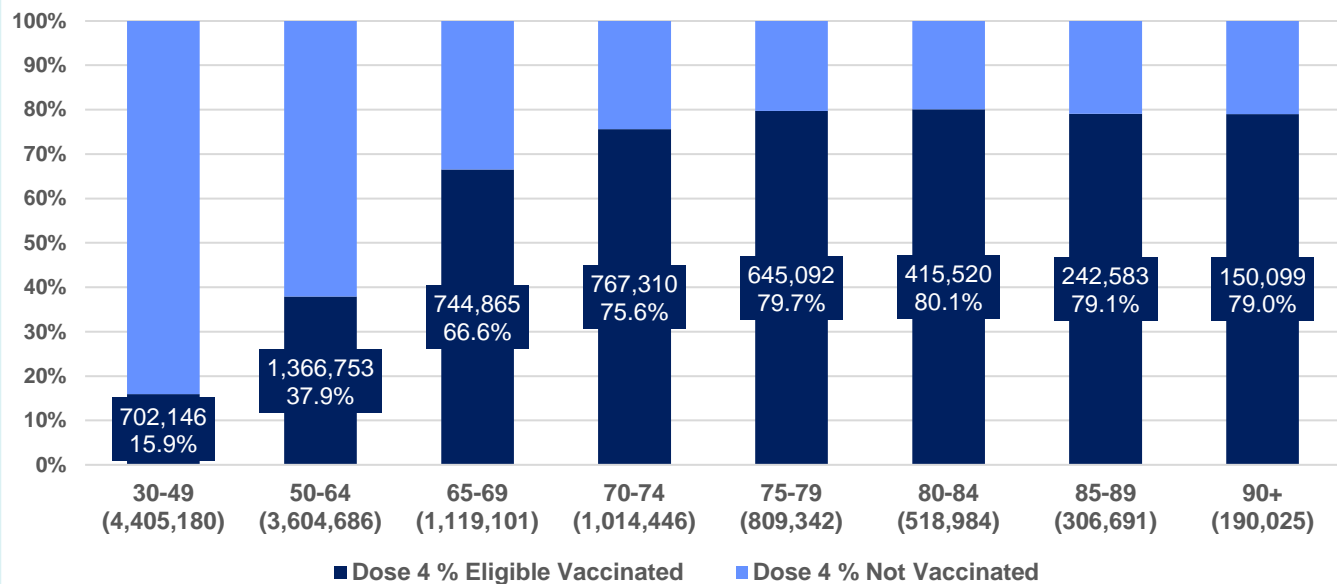
5,073,651
+48,442
42.1%
2,965,469
74.9%

total people (16+) who have received four doses
weekly increase (16+)

of eligible population (30+) (11,968,455)

total people (65+) who have received four doses
of eligible population (65+) (3,958,589)

% Individuals eligible vaccinated by current age



	Number of People 16+	Weekly Increase
ACT	109,121	1,696
NSW	1,622,059	14,911
NT	26,558	318
QLD	968,306	7,279
SA	401,608	3,954
TAS	136,358	1,280
VIC	1,258,613	13,666
WA	519,891	4,879

31,137 doses administered to persons residing in other territories or with missing residential information

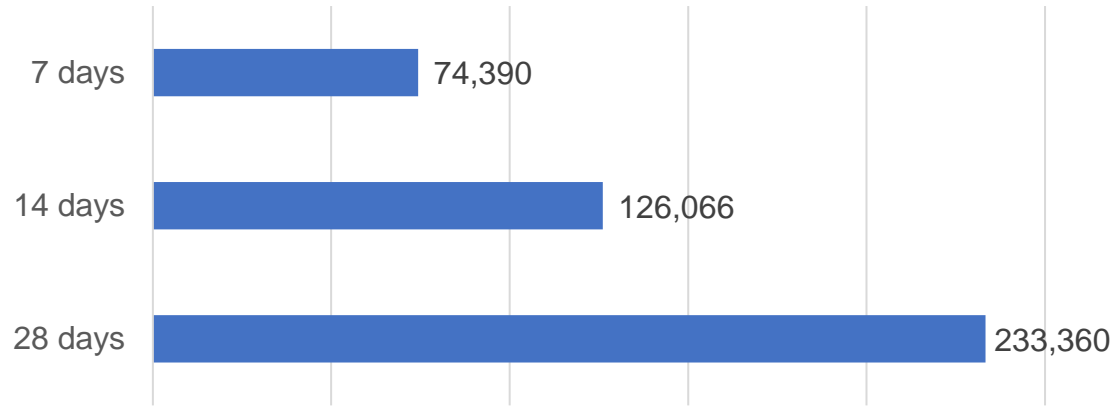
*People become eligible for a fourth dose three months after their third dose. Individuals may belong to multiple groups and could be represented in the above multiple times.
#Aged Care Residents data as at 10 November 2022.

Source: Australian Immunisation Register

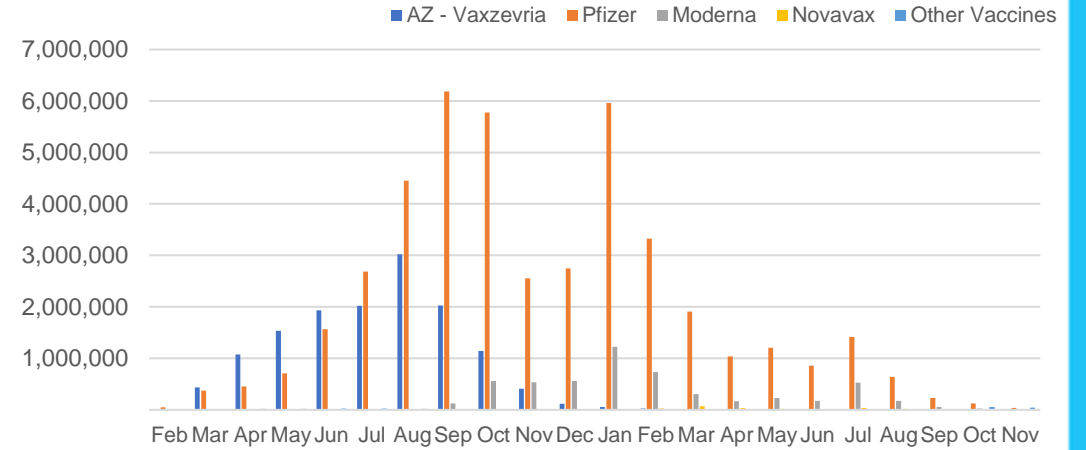
Vaccine milestone charts

Data as at:
09 Nov 2022
Updated weekly

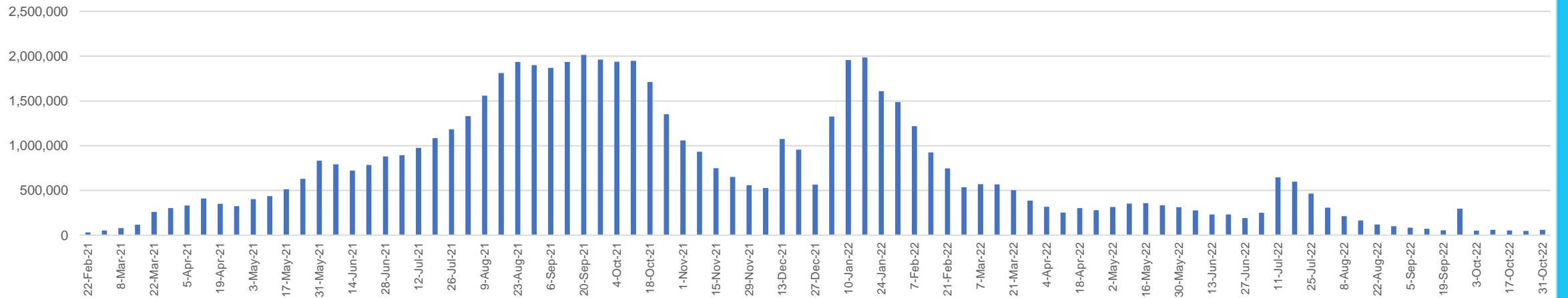
Doses Reported



Doses by administration month and vaccine type



Doses Administered by Week



*Sourced from the Australian Immunisation Register.

Data as at:
09 Nov 2022
Updated weekly

Doses by age and jurisdiction

	AUS	ACT	NSW	NT	QLD	SA	TAS	VIC	WA
5 to 11 - dose 1	1,149,888	30,837	344,758	12,129	197,818	80,229	27,188	312,469	133,858
5 to 11 - dose 2	911,286	27,387	282,085	8,651	151,148	64,304	22,685	247,160	102,494
5 to 11 - population	2,269,663	40,719	711,525	25,120	476,567	149,048	45,549	568,488	252,235
5 to 11 % with dose 1	50.66%	75.73%	48.45%	48.28%	41.51%	53.83%	59.69%	54.96%	53.07%
5 to 11 % with dose 2	40.15%	67.26%	39.65%	34.44%	31.72%	43.14%	49.80%	43.48%	40.63%
12 to 15 - dose 1	1,027,701	20,052	315,350	10,321	200,033	66,985	22,317	268,114	113,300
12 to 15 - dose 2	965,653	19,466	299,798	9,271	185,326	62,905	21,085	254,486	104,131
12 to 15 - population	1,279,387	20,888	399,352	13,190	278,225	85,541	27,469	313,711	140,783
12 to 15 % with dose 1	80.33%	96.00%	78.97%	78.25%	71.90%	78.31%	81.24%	85.47%	80.48%
12 to 15 % with dose 2	75.48%	93.19%	75.07%	70.29%	66.61%	73.54%	76.76%	81.12%	73.97%
16 and over - dose 1	20,057,116	352,912	6,308,703	171,246	3,866,857	1,373,411	442,800	5,163,101	2,098,201
16 and over - dose 2	19,775,598	348,023	6,226,704	167,395	3,810,589	1,348,287	435,149	5,102,918	2,072,293
16 and over - dose 3	14,275,384	280,614	4,372,599	133,184	2,483,043	1,024,877	324,557	3,791,136	1,729,110
16 and over - population	20,629,070	364,811	6,504,442	193,211	4,161,009	1,471,062	465,436	5,279,175	2,185,967
16 and over % with dose 1	97.23%	96.74%	96.99%	88.63%	92.93%	93.36%	95.14%	97.80%	95.99%
16 and over % with dose 2	95.86%	95.40%	95.73%	86.64%	91.58%	91.65%	93.49%	96.66%	94.80%
16 and over % with dose 3	69.20%	76.92%	67.22%	68.93%	59.67%	69.67%	69.73%	71.81%	79.10%
30 and over - dose 1	15,671,786	272,897	4,955,716	126,816	3,019,362	1,091,169	351,442	4,026,640	1,642,534
30 and over - dose 2	15,487,180	269,618	4,900,394	124,657	2,984,088	1,075,905	346,683	3,985,265	1,625,801
30 and over - dose 3	12,074,628	230,004	3,731,236	104,703	2,160,603	876,001	280,368	3,165,407	1,424,568
30 and over - dose 4	5,034,368	107,831	1,608,210	26,037	962,289	399,546	135,477	1,247,682	516,675
30 and over - population	16,012,407	268,806	5,065,001	140,954	3,219,394	1,157,853	368,927	4,079,079	1,709,089
30 and over % with dose 1	97.87%	>99%	97.84%	89.97%	93.79%	94.24%	95.26%	98.71%	96.11%
30 and over % with dose 2	96.72%	>99%	96.75%	88.44%	92.69%	92.92%	93.97%	97.70%	95.13%
30 and over % with dose 3	75.41%	85.57%	73.67%	74.28%	67.11%	75.66%	76.00%	77.60%	83.35%
30 and over % with dose 4	31.44%	40.11%	31.75%	18.47%	29.89%	34.51%	36.72%	30.59%	30.23%
65 and over - dose 1	4,356,907	63,956	1,408,698	20,347	845,881	347,670	114,017	1,086,878	427,880
65 and over - dose 2	4,320,877	63,238	1,397,213	20,098	839,959	345,113	113,343	1,077,558	425,033
65 and over - dose 3	3,973,345	59,961	1,272,674	18,290	771,981	323,632	106,948	983,360	403,477
65 and over - dose 4	2,965,469	49,623	944,612	11,505	589,725	250,824	84,375	715,206	299,049
65 and over - population	4,313,779	60,463	1,393,416	21,593	864,448	352,458	116,037	1,072,562	431,884
65 and over % with dose 1	>99%	>99%	>99%	94.23%	97.85%	98.64%	98.26%	>99%	>99%
65 and over % with dose 2	>99%	>99%	>99%	93.08%	97.17%	97.92%	97.68%	>99%	98.41%
65 and over % with dose 3	92.11%	>99%	91.33%	84.70%	89.30%	91.82%	92.17%	91.68%	93.42%
65 and over % with dose 4	68.74%	82.07%	67.79%	53.28%	68.22%	71.16%	72.71%	66.68%	69.24%

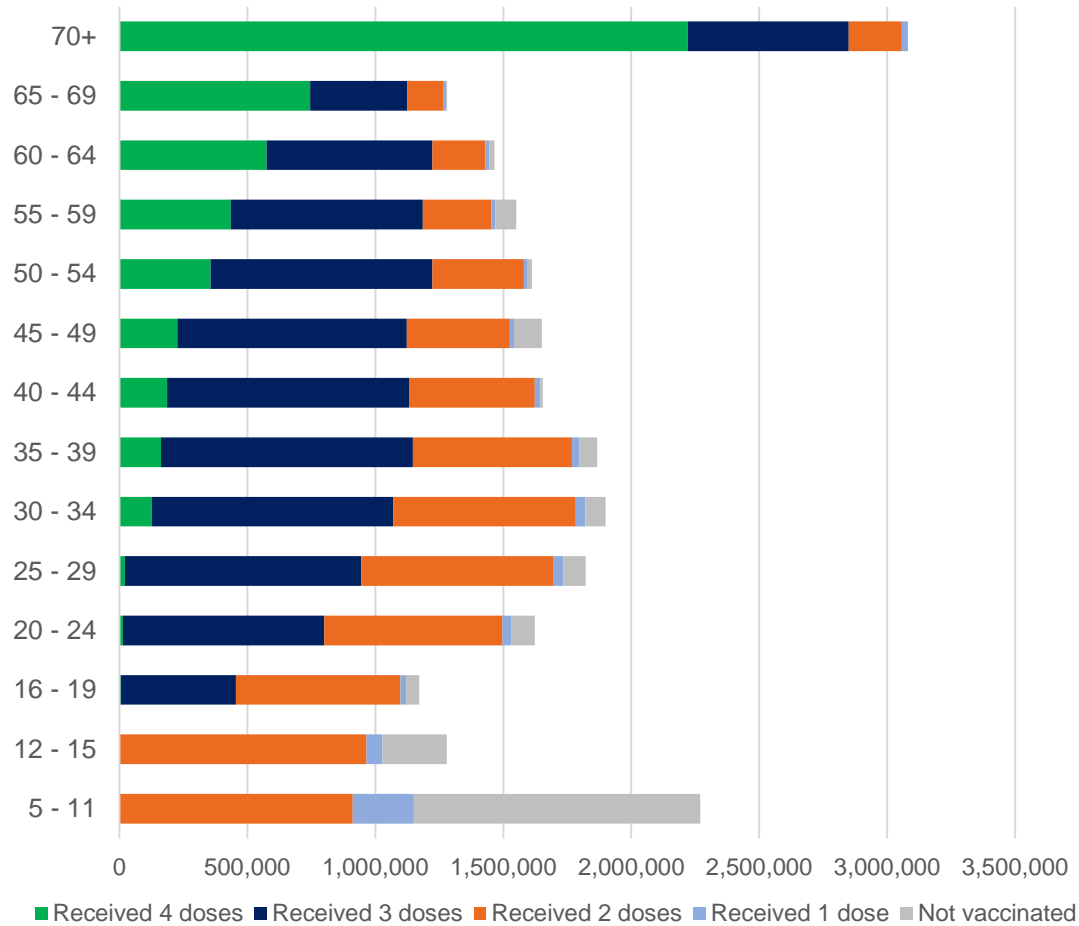
*National population will not equal sum of listed jurisdictions due to a small number of people counted in national population residing in some 'other' territories. Sum of state doses will not add to national total as some records are unable to be geocoded to a State or Territory.

Doses sourced from Australian Immunisation Register, population from ABS ERP June 2021

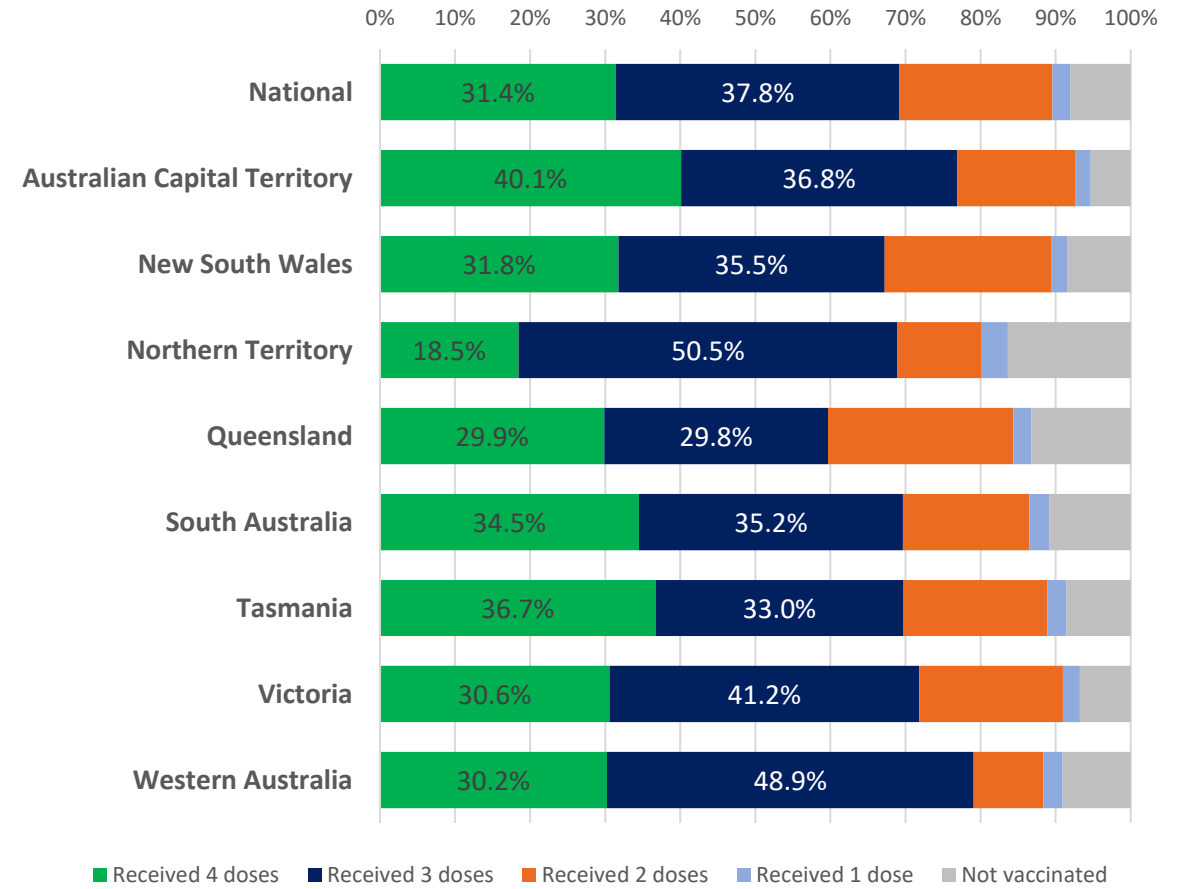
Data as at:
09 Nov 2022
Updated weekly

Vaccinations by age and location

Number of people vaccinated by age

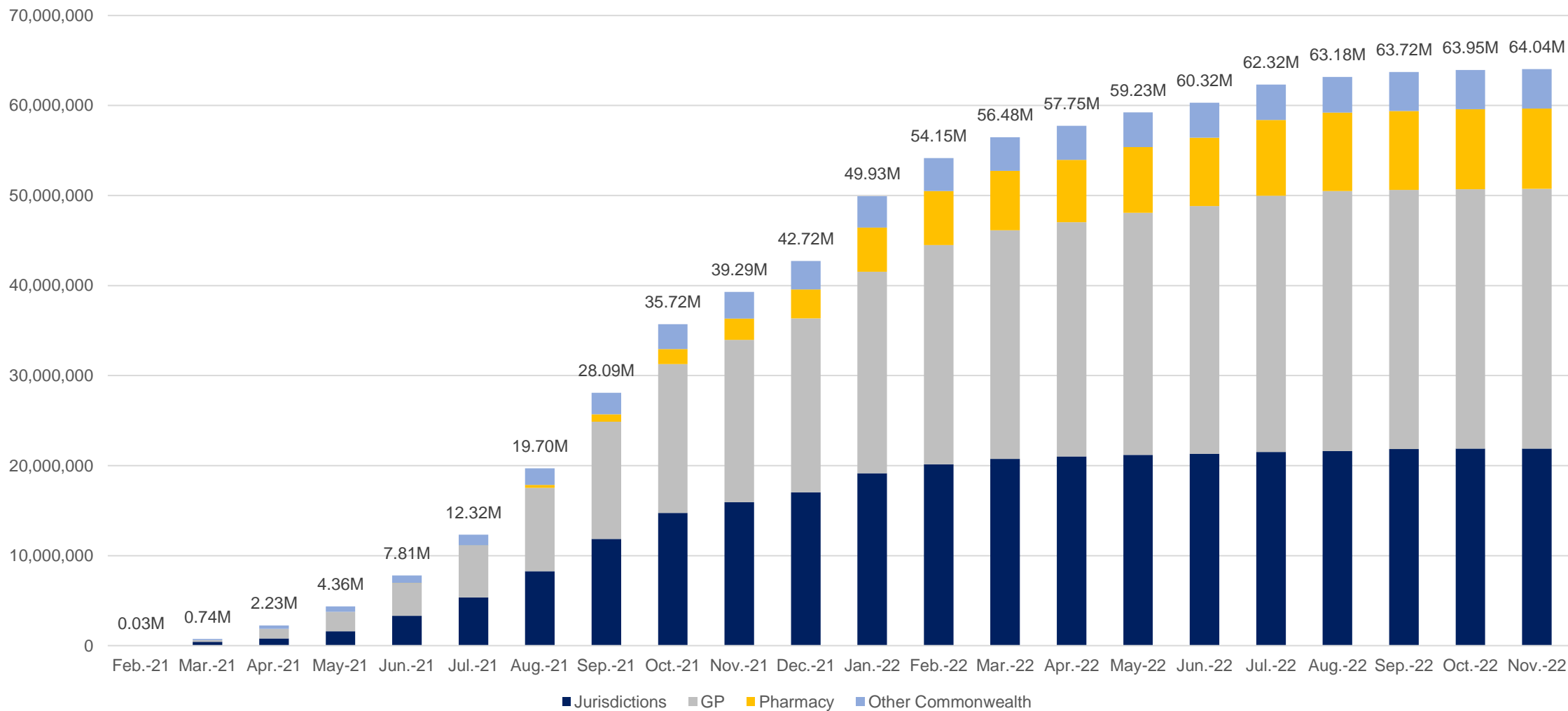


Individuals vaccinated by residential location



Cumulative doses administered by channel

Data as at:
09 Nov 2022
Updated weekly



Source: Australian Immunisation Register

Data as at:
09 Nov 2022
Updated weekly

Commonwealth primary care



Primary care vaccine administration sites#

3,603	62	130	2,693
GPs	CVCs	ACCHS	Pharmacies



40,805,943 total vaccine doses administered
in primary care settings

+66,482 weekly increase

Primary care vaccinations by provider type

	Doses administered	Weekly increase
General Practice*	31,815,890	28,044
Pharmacy	8,990,053	38,438

NSW
14,029,365
(+21,616 weekly increase)

VIC
10,101,368
(+17,386 weekly increase)

QLD
7,889,563
(+11,395 weekly increase)

WA
4,219,251
(+6,090 weekly increase)

TAS
785,738
(+1,780 weekly increase)

SA
2,490,540
(+5,153 weekly increase)

ACT
671,007
(+2,214 weekly increase)

NT
235,827
(+369 weekly increase)

383,284

doses administered to persons residing in other territories or with missing residential information

*General practice includes Commonwealth Vaccination Clinics, Aboriginal Community Health Centres, Royal Flying Doctor Service and other Commonwealth vaccination facilities

Primary care site numbers are reported as at 07 November 2022 and only include active sites.

Source: Australian Immunisation Register

Aboriginal and Torres Strait Islander peoples

Number of people vaccinated

Data as at:
09 Nov 2022
Updated weekly

Australia's COVID-19
Vaccine Program



People (16+) with at least one dose
448,480 85.5%

People (16+) with at least two doses
431,258 82.2%



Eligible people (16+) with three doses
242,437 56.4%

Eligible people (30+) with four doses
61,482 33.9%



People (12-15) with at least one dose
46,396 65.8%

People (12-15) with at least two doses
40,247 57.1%

131 Aboriginal community controlled health services (ACCHS) sites

0#	30	20	37	13	2	11	18
ACT	NSW	NT	QLD	SA	TAS	VIC	WA

Residential State	Individuals Dose 1 % (16+)	Individuals Dose 2 % (16+)	Individuals Dose 3 % Eligible (aged 16+)	Individuals Dose 4 % Eligible (aged 30+)
ACT	92.2%	90.0%	65.5%	39.8%
NSW	87.9%	86.0%	53.1%	37.1%
NT	90.2%	86.2%	70.3%	25.0%
QLD	82.4%	78.8%	49.0%	36.3%
SA	81.3%	76.1%	61.0%	37.1%
TAS	89.3%	86.9%	60.2%	40.4%
VIC	90.8%	89.0%	62.3%	35.1%
WA	87.6%	82.2%	66.6%	29.0%
Unknown/Other Territories	73.4%	68.3%	50.9%	23.6%
National Coverage %	85.5%	82.2%	56.4%	33.9%
Number with a Dose	448,480	431,258	242,437	61,482
Total / Eligible Population	524,343	524,343	429,823	181,184

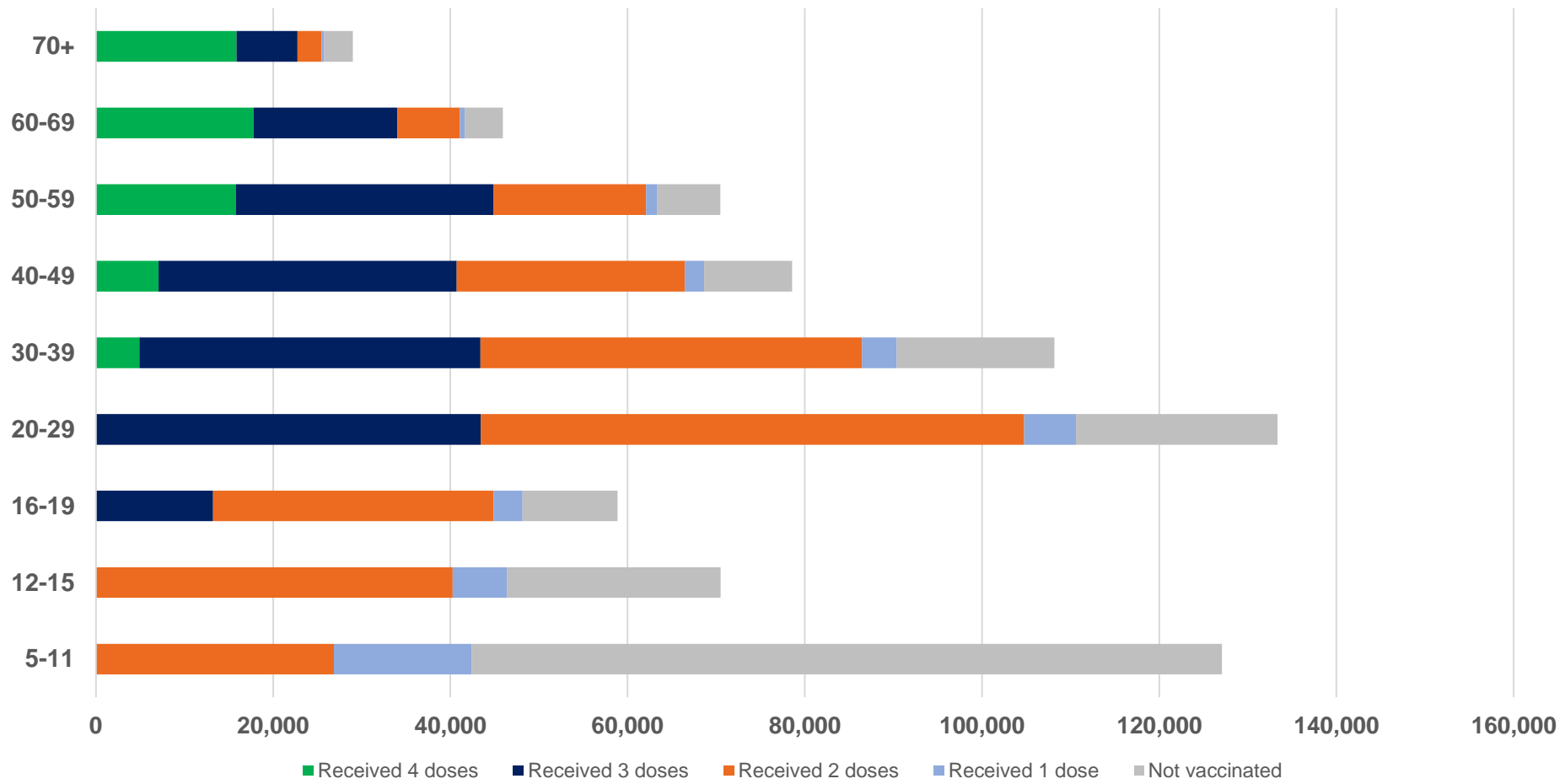
Identifying as Aboriginal and Torres Strait Islander is optional and the estimated population may be under reported. Numbers include all Aboriginal and Torres Strait Islander peoples who have received a vaccination, and are not limited to those administered in an ACCHS setting. The total population refers to the number of individuals that identify as Aboriginal and Torres Strait Islander in the Australian Immunisation Register, while the eligible population refers to the number of these individuals who meet the criteria for a further dose (based on completion of previous doses, age, and time period elapsed since last dose). Please note there may be people under 30 who are eligible, but these are not included in coverage rates or population to protect privacy.

#ACCHS in the ACT are currently operating as Commonwealth Vaccine Clinics so not included to avoid double counting.

Aboriginal and Torres Strait Islander peoples

Number of people vaccinated by age

Data as at:
09 Nov 2022
Updated weekly



Source: Australian Immunisation Register

Individuals with Culturally and Linguistically Diverse (CALD) backgrounds data

Data as at:
30 Oct 2022
Updated weekly

Australia's COVID-19
Vaccine Program

People over the age of 16

CALD population *	Total number of individuals in cohort	% People with at least one dose	% People who received two doses	% of eligible people who received three or more doses
General population	20,629,070	>95.0%	>95.0%	72.2%
People born overseas	4,339,180	94.6%	94.1%	73.3%
Speaks a language other than English at home	4,011,622	94.2%	93.5%	69.3%

	General population			Born Overseas			Speaks a language other than English at home		
	% with at least one dose	% who received two doses	% of eligible people who received three or more doses	% with at least one dose	% who received two doses	% of eligible people who received three or more doses	% with at least one dose	% who received two doses	% of eligible people who received three or more doses
ACT	>95.0%	>95.0%	80.7%	>95.0%	>95.0%	79.0%	>95.0%	>95.0%	76.4%
NSW	>95.0%	>95.0%	70.2%	>95.0%	94.4%	70.8%	94.2%	93.6%	66.2%
NT	88.6%	86.6%	79.6%	>95.0%	>95.0%	88.3%	94.3%	93.9%	87.1%
Qld	92.9%	91.6%	65.2%	92.3%	91.6%	67.8%	92.6%	91.8%	64.4%
SA	93.3%	91.6%	76.1%	92.9%	92.0%	75.6%	91.9%	90.9%	71.9%
Tas	>95.0%	93.5%	74.6%	93.8%	93.2%	76.3%	93.8%	93.2%	72.5%
Vic	>95.0%	>95.0%	74.3%	>95.0%	94.8%	73.5%	94.8%	94.2%	69.7%
WA	>95.0%	94.8%	83.5%	>95.0%	94.7%	85.7%	>95.0%	94.8%	83.7%

*Individuals with Culturally and Linguistically Diverse (CALD) backgrounds are as reported in the 2021 Census, excluding those who have since departed Australia; deceased persons; those born in the UK, Ireland or NZ; and Aboriginal and/or Torres Strait Islander peoples. There is overlap across CALD cohorts where individuals may have reported they had more than one CALD characteristic in the 2021 Census.

Small negative changes may appear when compared with the previous report due to perturbation, in particular for small population groups.

Source: Australian Immunisation Register linked to the Multi-Agency Data Integration Project (Census 2021 characteristics). Coverage rates for the general population are as published for 2 November 2022.

Residential aged care vaccination rollout

Data as at:
10 Nov 2022
Updated weekly



160,476

Aged care residents with at least one dose



>99%

Aged care workers with at least two doses nationally



159,252

Aged care residents with at least two doses



153,229

Aged care residents with at least three doses



124,176

Aged care residents with at least four doses

Aged care resident vaccinations

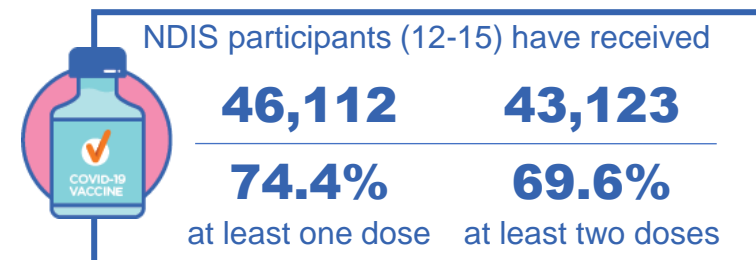
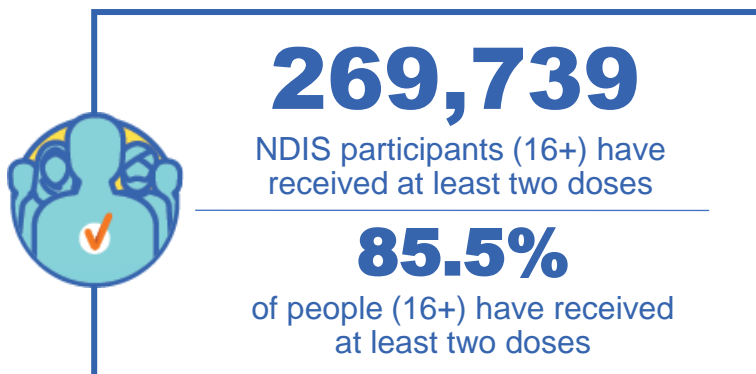
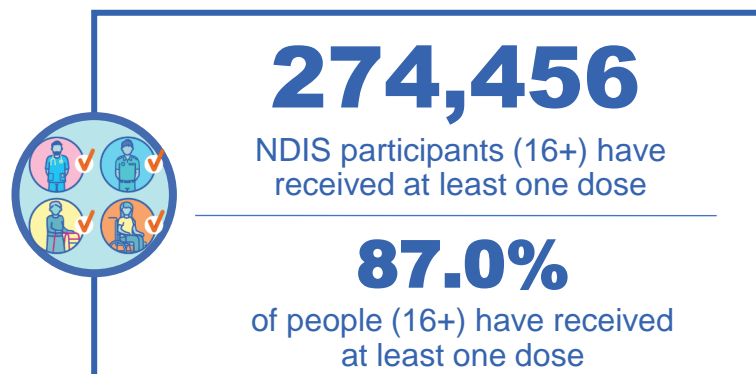
	Aged care residents with at least one dose	Aged care residents with at least two doses	Aged care residents with at least three doses	Aged care residents with at least four doses
NSW	96.9%	96.2%	92.4%	73.2%
VIC	96.8%	96.3%	93.5%	79.6%
QLD	95.0%	94.2%	90.2%	71.6%
SA	95.8%	94.6%	90.7%	73.1%
WA	96.8%	95.9%	91.9%	72.3%
TAS	95.9%	95.1%	91.6%	75.0%
NT	96.9%	95.1%	90.6%	70.1%
ACT	97.8%	97.2%	95.0%	82.1%
National	96.4%	95.7%	92.0%	74.6%

Source: Residential aged care provider self-reported COVID-19 vaccination information and matched AIR data of residents in permanent residential RACFs.

National Disability Insurance Scheme (NDIS) reported vaccinations

Data as at:
06 Nov 2022
Updated weekly

Australia's COVID-19
Vaccine Program



NDIS participant vaccinations

	% People aged 16+ with at least one dose	% People aged 16+ with at least two doses	% People aged 16+ with three doses	% People aged 16+ with four doses
ACT	89.6%	88.4%	83.5%	37.9%
NSW	87.5%	86.2%	75.2%	34.6%
NT	77.9%	75.6%	79.4%	26.8%
QLD	85.0%	83.4%	71.4%	28.9%
SA	84.8%	83.0%	78.4%	30.1%
TAS	87.6%	85.8%	76.5%	30.9%
VIC	88.1%	86.7%	77.4%	32.0%
WA	88.3%	86.7%	82.1%	32.5%
National	87.0%	85.5%	76.2%	32.1%

Source: Linkage between National Disability Insurance Agency data and the Australian Immunisation Register. Total NDIS participant numbers as at 01 November. Australian Immunisation Register data as at 06 November. Includes all participants regardless of residence type.