



Australian Government

Department of Health and Aged Care

COVID-19 Vaccine Roll-out

27 October 2022

Data as at:
26 Oct 2022
Updated weekly

Total vaccine doses



63,914,491 total vaccine doses administered

+48,856 weekly increase



20,048,521

people (16+) have received at least one dose (>95%)

19,767,619

people (16+) have received at least two doses (>95%)



14,261,948

people (16+) have received three doses



4,996,311

people (16+) have received four doses

NSW
19,821,253
(+14,727 weekly increase)

VIC
16,639,907
(+11,992 weekly increase)

QLD
12,066,626
(+6,817 weekly increase)

WA
6,966,964
(+5,125 weekly increase)

TAS
1,452,921
(+909 weekly increase)

SA
4,456,916
(+4,427 weekly increase)

ACT
1,889,839
(+4,414 weekly increase)

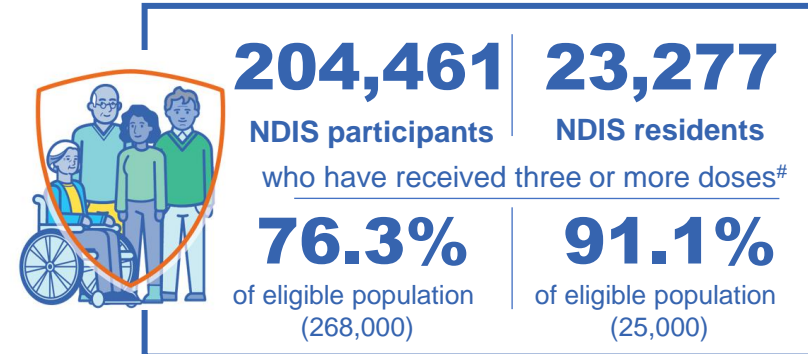
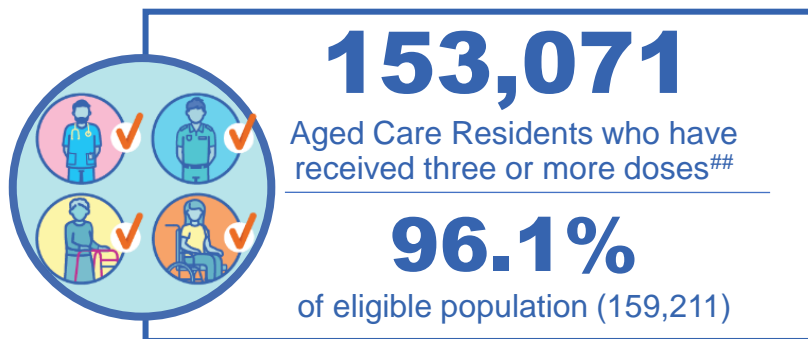
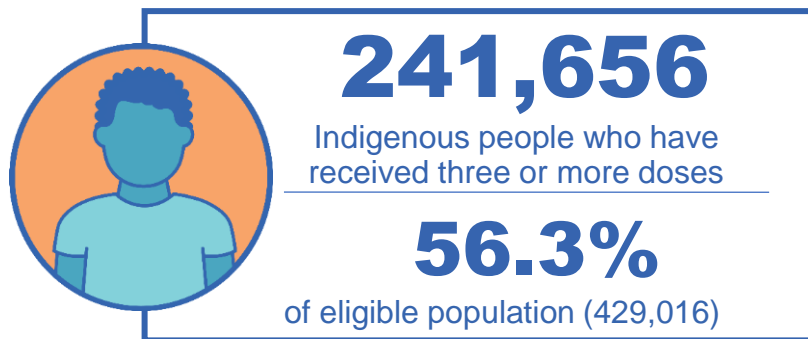
NT
620,065
(+445 weekly increase)

*Administration state breakdown indicates state in which a vaccine was administered

Source: Australian Immunisation Register

Third Doses

Data as at:
26 Oct 2022##
Updated weekly



14,261,948 total people who have received three or more doses

+6,336 weekly increase

72.2% of eligible population (19,749,167)

	Number of People	Weekly Increase	% of Eligible
ACT	280,425	104	80.7%
NSW	4,367,465	1,811	70.2%
NT	133,138	<10	79.6%
QLD	2,480,006	1,357	65.2%
SA	1,024,076	445	76.1%
TAS	324,346	<10	74.7%
VIC	3,788,264	1,276	74.3%
WA	1,727,792	593	83.5%

136,436

doses administered to persons residing in other territories or with missing residential information


*People may belong to multiple groups and could be represented in the above breakdowns multiple times.
#NDIS participants data as at 23 October 2022. ##Aged Care Residents data as at 27 October 2022.

Source: Australian Immunisation Register

Fourth Doses

Data as at:
26 Oct 2022#
Updated weekly

Australia's COVID-19
Vaccine Program



122,902
Aged Care Residents who have received four or more doses#

83.5%
of eligible population (147,243)



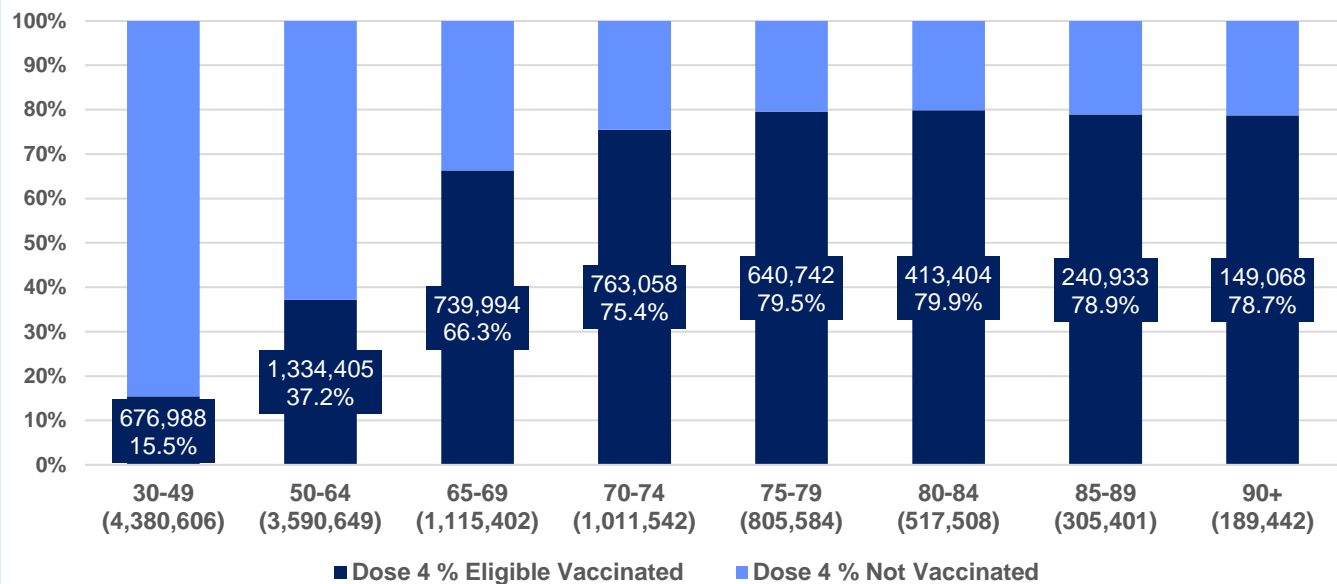
4,996,311
+29,242
41.6%
2,947,199
74.7%

total people (16+) who have received four doses
weekly increase (16+)

of eligible population (30+) (11,916,134)

total people (65+) who have received four doses
of eligible population (65+) (3,944,879)

% Individuals eligible vaccinated by current age



	Number of People 16+	Weekly Increase
ACT	106,415	981
NSW	1,598,775	8,190
NT	25,997	214
QLD	956,584	4,544
SA	394,783	3,020
TAS	134,227	584
VIC	1,237,716	7,354
WA	511,368	3,578

30,446

doses administered to persons residing in other territories or with missing residential information

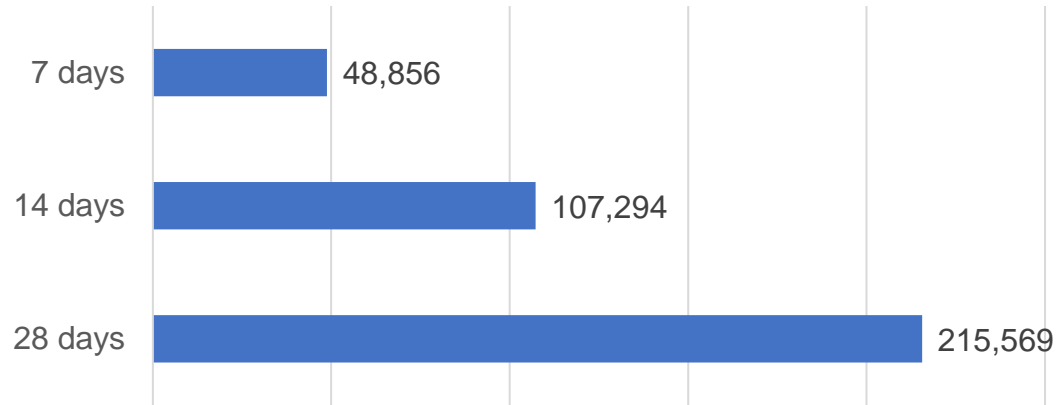
*People become eligible for a fourth dose three months after their third dose. Individuals may belong to multiple groups and could be represented in the above multiple times.
#Aged Care Residents data as at 27 October 2022.

Source: Australian Immunisation Register

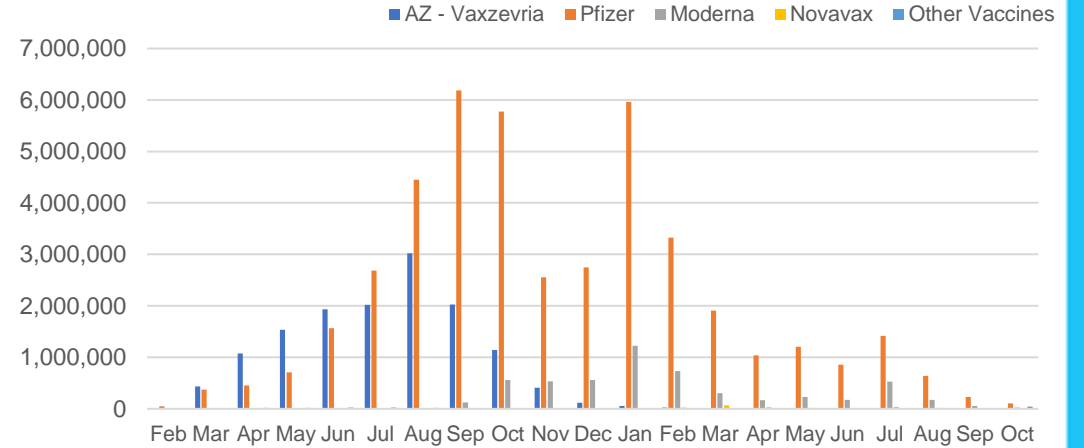
Vaccine milestone charts

Data as at:
26 Oct 2022
Updated weekly

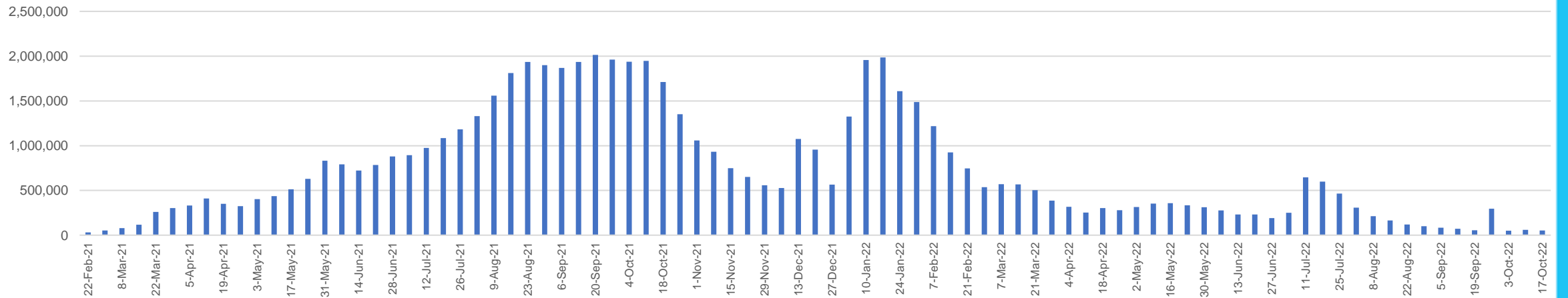
Doses Reported



Doses by administration month and vaccine type



Doses Administered by Week



*Sourced from the Australian Immunisation Register.

Data as at:
26 Oct 2022
Updated weekly

Doses by age and jurisdiction

	AUS	ACT	NSW	NT	QLD	SA	TAS	VIC	WA
5 to 11 - dose 1	1,155,978	30,912	346,612	12,209	198,896	80,684	27,338	313,948	134,539
5 to 11 - dose 2	914,824	27,432	283,187	8,686	151,678	64,598	22,797	248,062	102,949
5 to 11 - population	2,269,663	40,719	711,525	25,120	476,567	149,048	45,549	568,488	252,235
5 to 11 % with dose 1	50.93%	75.92%	48.71%	48.60%	41.74%	54.13%	60.02%	55.23%	53.34%
5 to 11 % with dose 2	40.31%	67.37%	39.80%	34.58%	31.83%	43.34%	50.05%	43.64%	40.81%
12 to 15 - dose 1	1,030,121	20,056	315,973	10,333	200,556	67,109	22,350	268,827	113,581
12 to 15 - dose 2	968,879	19,475	300,663	9,294	186,028	63,070	21,134	255,425	104,508
12 to 15 - population	1,279,387	20,888	399,352	13,190	278,225	85,541	27,469	313,711	140,783
12 to 15 % with dose 1	80.52%	96.02%	79.12%	78.34%	72.08%	78.45%	81.36%	85.69%	80.68%
12 to 15 % with dose 2	75.73%	93.24%	75.29%	70.46%	66.86%	73.73%	76.94%	81.42%	74.23%
16 and over - dose 1	20,048,521	352,789	6,306,463	171,291	3,864,490	1,372,801	442,556	5,160,507	2,096,559
16 and over - dose 2	19,767,619	347,934	6,224,666	167,423	3,808,305	1,347,740	434,910	5,100,559	2,070,687
16 and over - dose 3	14,261,948	280,425	4,367,465	133,138	2,480,006	1,024,076	324,346	3,788,264	1,727,792
16 and over - population	20,629,070	364,811	6,504,442	193,211	4,161,009	1,471,062	465,436	5,279,175	2,185,967
16 and over % with dose 1	97.19%	96.70%	96.96%	88.65%	92.87%	93.32%	95.08%	97.75%	95.91%
16 and over % with dose 2	95.82%	95.37%	95.70%	86.65%	91.52%	91.62%	93.44%	96.62%	94.73%
16 and over % with dose 3	69.14%	76.87%	67.15%	68.91%	59.60%	69.61%	69.69%	71.76%	79.04%
30 and over - dose 1	15,661,905	272,668	4,953,119	126,804	3,017,084	1,090,687	351,170	4,023,597	1,641,205
30 and over - dose 2	15,477,928	269,422	4,897,996	124,645	2,981,909	1,075,451	346,412	3,982,422	1,624,515
30 and over - dose 3	12,061,770	229,712	3,727,072	104,628	2,158,089	875,300	280,102	3,162,073	1,423,111
30 and over - dose 4	4,958,592	105,179	1,585,450	25,491	950,811	392,821	133,376	1,227,244	508,268
30 and over - population	16,012,407	268,806	5,065,001	140,954	3,219,394	1,157,853	368,927	4,079,079	1,709,089
30 and over % with dose 1	97.81%	>99%	97.79%	89.96%	93.72%	94.20%	95.19%	98.64%	96.03%
30 and over % with dose 2	96.66%	>99%	96.70%	88.43%	92.62%	92.88%	93.90%	97.63%	95.05%
30 and over % with dose 3	75.33%	85.46%	73.58%	74.23%	67.03%	75.60%	75.92%	77.52%	83.27%
30 and over % with dose 4	30.97%	39.13%	31.30%	18.08%	29.53%	33.93%	36.15%	30.09%	29.74%
65 and over - dose 1	4,351,485	63,874	1,406,856	20,313	845,052	347,466	113,876	1,085,492	427,370
65 and over - dose 2	4,315,699	63,162	1,395,467	20,064	839,171	344,906	113,204	1,076,239	424,533
65 and over - dose 3	3,968,002	59,874	1,270,907	18,244	771,130	323,383	106,801	982,038	402,918
65 and over - dose 4	2,947,199	49,324	938,968	11,393	586,715	249,053	83,803	710,883	296,927
65 and over - population	4,313,779	60,463	1,393,416	21,593	864,448	352,458	116,037	1,072,562	431,884
65 and over % with dose 1	>99%	>99%	>99%	94.07%	97.76%	98.58%	98.14%	>99%	98.95%
65 and over % with dose 2	>99%	>99%	>99%	92.92%	97.08%	97.86%	97.56%	>99%	98.30%
65 and over % with dose 3	91.98%	>99%	91.21%	84.49%	89.20%	91.75%	92.04%	91.56%	93.29%
65 and over % with dose 4	68.32%	81.58%	67.39%	52.76%	67.87%	70.66%	72.22%	66.28%	68.75%

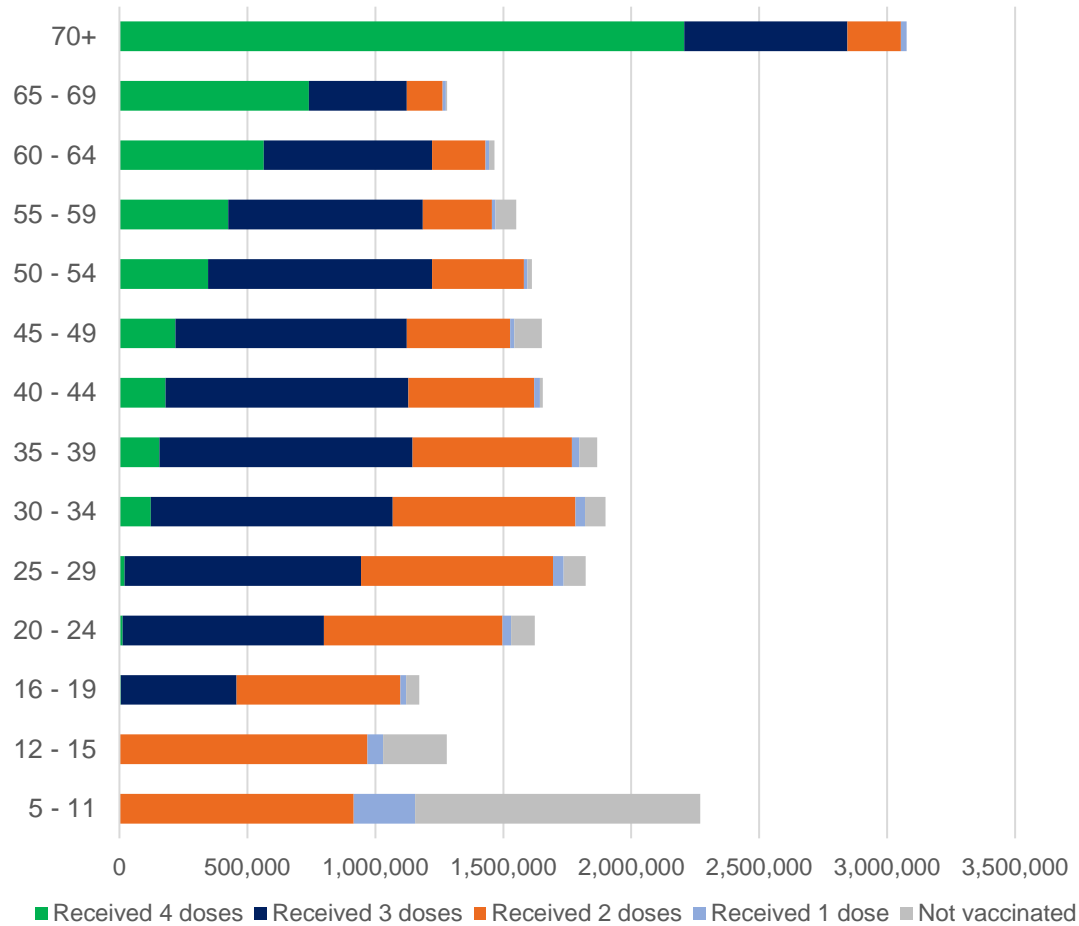
*National population will not equal sum of listed jurisdictions due to a small number of people counted in national population residing in some 'other' territories. Sum of state doses will not add to national total as some records are unable to be geocoded to a State or Territory.

Doses sourced from Australian Immunisation Register, population from ABS ERP June 2021

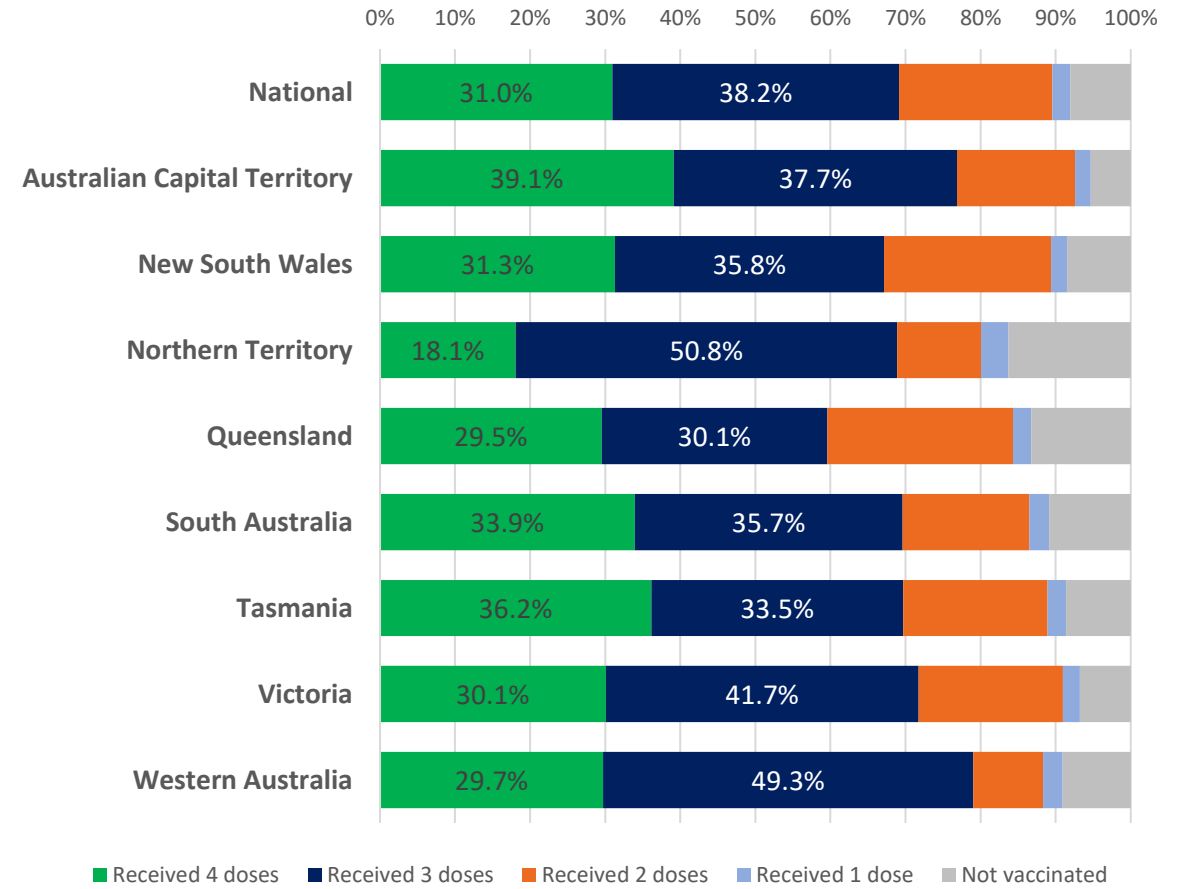
Vaccinations by age and location

Data as at:
26 Oct 2022
Updated weekly

Number of people vaccinated by age

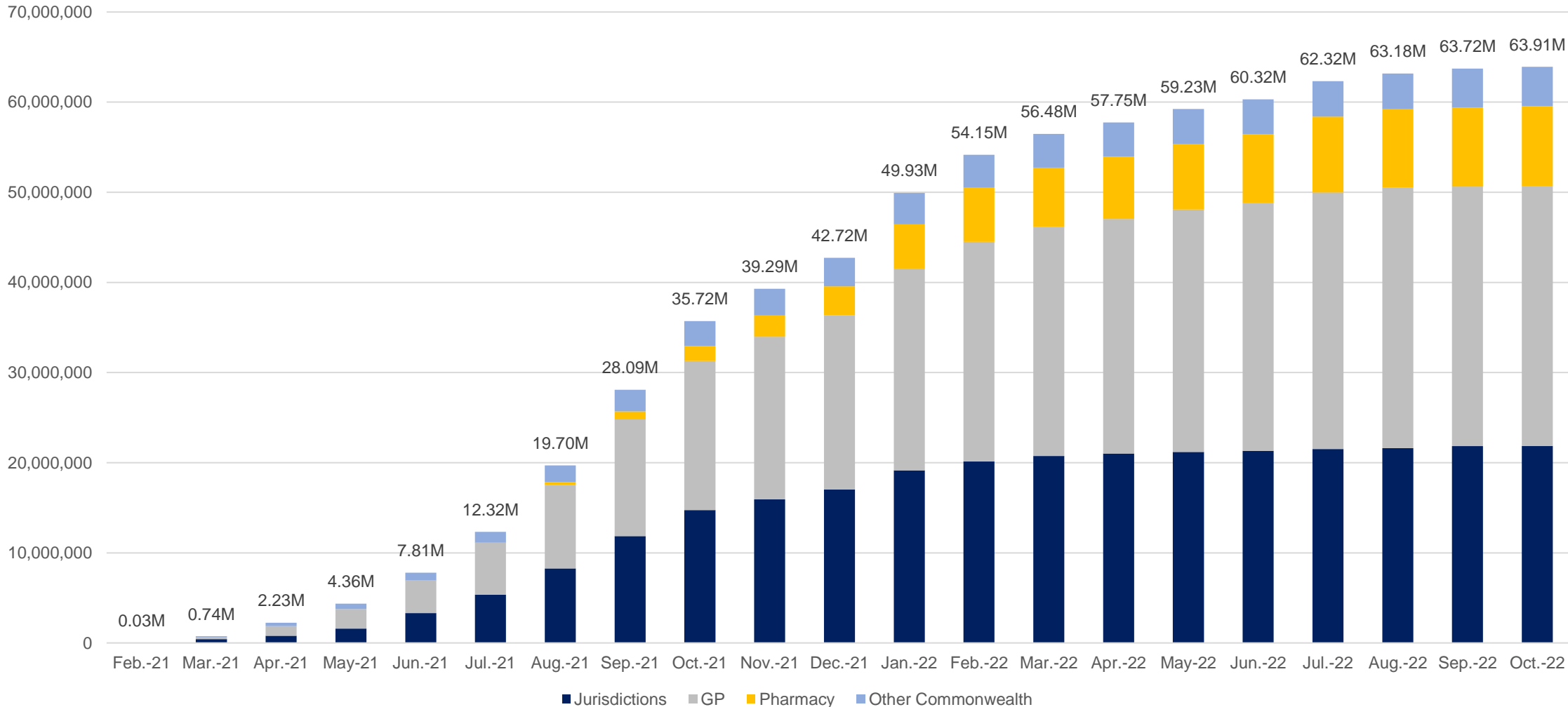


Individuals vaccinated by residential location



Data as at:
26 Oct 2022
Updated weekly

Cumulative doses administered by channel



Source: Australian Immunisation Register

Data as at:
26 Oct 2022
Updated weekly

Commonwealth primary care



Primary care vaccine administration sites#

3,791	75	136	2,745
GPs	CVCs	ACCHS	Pharmacies



40,694,591 total vaccine doses administered
in primary care settings
+42,141 weekly increase

Primary care vaccinations by provider type

	Doses administered	Weekly increase
General Practice*	31,766,288	19,144
Pharmacy	8,928,303	22,997

NSW
13,994,065
(+12,451
weekly
increase)

VIC
10,072,135
(+10,090
weekly
increase)

QLD
7,869,491
(+6,285
weekly
increase)

WA
4,208,978
(+4,459
weekly
increase)

TAS
782,721
(+788
weekly
increase)

SA
2,481,188
(+3,777
weekly
increase)

ACT
667,457
(+1,284
weekly
increase)

NT
235,183
(+93
weekly
increase)

383,373

doses administered to persons
residing in other territories or with
missing residential information

*General practice includes Commonwealth Vaccination Clinics, Aboriginal Community Health Centres, Royal Flying Doctor Service and other Commonwealth vaccination facilities

Primary care site numbers are reported as at 24 October 2022 and only include active sites.

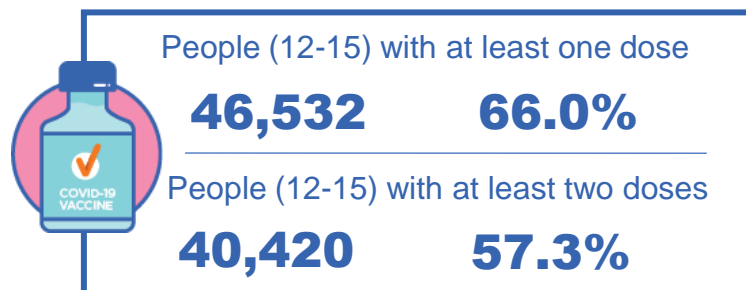
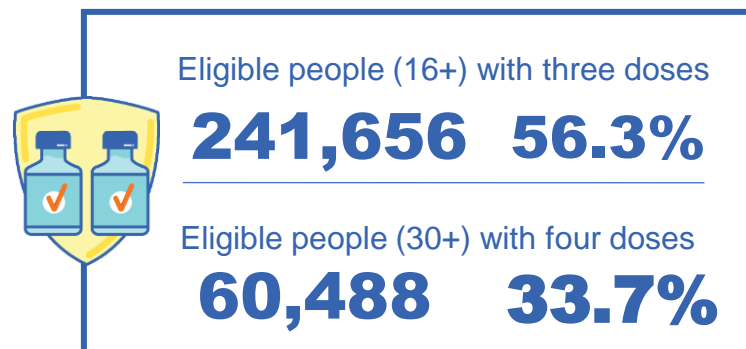
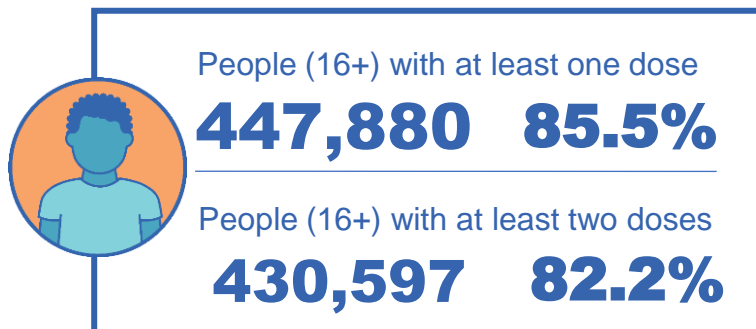
Source: Australian Immunisation Register

Aboriginal and Torres Strait Islander peoples

Number of people vaccinated

Data as at:
26 Oct 2022
Updated weekly

Australia's COVID-19
Vaccine Program



139 Aboriginal community controlled health services (ACCHS) sites

0#	31	22	40	13	2	11	20
ACT	NSW	NT	QLD	SA	TAS	VIC	WA

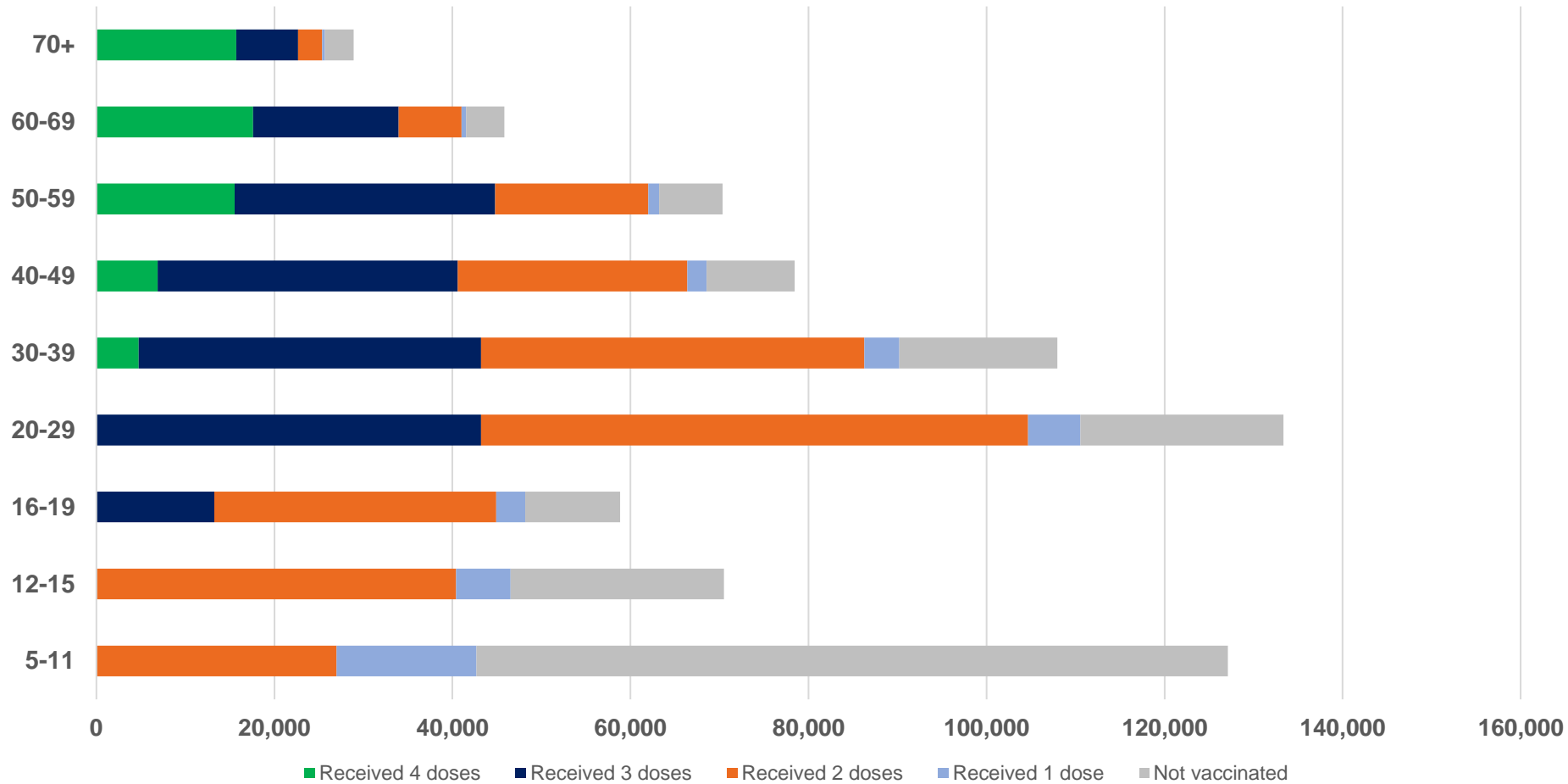
Residential State	Individuals Dose 1 % (16+)	Individuals Dose 2 % (16+)	Individuals Dose 3 % Eligible (aged 16+)	Individuals Dose 4 % Eligible (aged 30+)
ACT	92.1%	90.0%	65.4%	39.3%
NSW	87.9%	86.0%	53.0%	37.1%
NT	90.1%	86.1%	70.1%	24.5%
QLD	82.4%	78.8%	49.0%	36.2%
SA	81.3%	76.0%	61.0%	37.0%
TAS	89.2%	86.9%	60.2%	40.2%
VIC	90.9%	89.0%	62.2%	34.9%
WA	87.5%	82.2%	66.5%	28.6%
Unknown/Other Territories	73.4%	68.3%	50.7%	23.2%
National Coverage %	85.5%	82.2%	56.3%	33.7%
Number with a Dose	447,880	430,597	241,656	60,488
Total / Eligible Population	523,670	523,670	429,016	179,289

Identifying as Aboriginal and Torres Strait Islander is optional and the estimated population may be under reported. Numbers include all Aboriginal and Torres Strait Islander peoples who have received a vaccination, and are not limited to those administered in an ACCHS setting. The total population refers to the number of individuals that identify as Aboriginal and Torres Strait Islander in the Australian Immunisation Register, while the eligible population refers to the number of these individuals who meet the criteria for a further dose (based on completion of previous doses, age, and time period elapsed since last dose). Please note there may be people under 30 who are eligible, but these are not included in coverage rates or population to protect privacy.

#ACCHS in the ACT are currently operating as Commonwealth Vaccine Clinics so not included to avoid double counting.

Aboriginal and Torres Strait Islander peoples Number of people vaccinated by age

Data as at:
26 Oct 2022
Updated weekly



Source: Australian Immunisation Register

Individuals with Culturally and Linguistically Diverse (CALD) backgrounds data

Data as at:
16 Oct 2022
Updated weekly

Australia's COVID-19
Vaccine Program

People over the age of 16

CALD population *	Total number of individuals in cohort	% People with at least one dose	% People who received two doses	% of eligible people who received three or more doses
General population	20,629,070	>95.0%	>95.0%	72.2%
People born overseas	4,339,180	94.6%	94.1%	73.3%
Speaks a language other than English at home	4,011,622	94.2%	93.6%	69.2%

	General population			Born Overseas			Speaks a language other than English at home		
	% with at least one dose	% who received two doses	% of eligible people who received three or more doses	% with at least one dose	% who received two doses	% of eligible people who received three or more doses	% with at least one dose	% who received two doses	% of eligible people who received three or more doses
ACT	>95.0%	>95.0%	80.6%	>95.0%	>95.0%	78.9%	>95.0%	>95.0%	76.3%
NSW	>95.0%	>95.0%	70.2%	>95.0%	94.5%	70.8%	94.2%	93.6%	66.1%
NT	88.7%	86.7%	79.6%	>95.0%	>95.0%	88.3%	94.4%	94.0%	87.1%
Qld	92.9%	91.5%	65.2%	92.3%	91.6%	67.7%	92.6%	91.8%	64.3%
SA	93.3%	91.6%	76.1%	93.0%	92.0%	75.5%	91.9%	90.9%	71.9%
Tas	>95.0%	93.4%	74.7%	93.9%	93.4%	76.3%	94.0%	93.4%	72.4%
Vic	>95.0%	>95.0%	74.3%	>95.0%	94.9%	73.5%	94.8%	94.2%	69.6%
WA	>95.0%	94.7%	83.5%	>95.0%	94.7%	85.6%	>95.0%	94.8%	83.7%

*Individuals with Culturally and Linguistically Diverse (CALD) backgrounds are as reported in the 2021 Census, excluding those who have since departed Australia; deceased persons; those born in the UK, Ireland or NZ; and Aboriginal and/or Torres Strait Islander peoples. There is overlap across CALD cohorts where individuals may have reported they had more than one CALD characteristic in the 2021 Census.

Small negative changes may appear when compared with the previous report due to perturbation, in particular for small population groups.

Source: Australian Immunisation Register linked to the Multi-Agency Data Integration Project (Census 2021 characteristics). Coverage rates for the general population are as published for 19 October 2022.

Data as at:
27 Oct 2022
Updated weekly

Residential aged care vaccination rollout



160,462
Aged care residents with at least one dose



159,211
Aged care residents with at least two doses



153,071
Aged care residents with at least three doses



122,902
Aged care residents with at least four doses



>99%
Aged care workers with at least two doses nationally

Aged care resident vaccinations

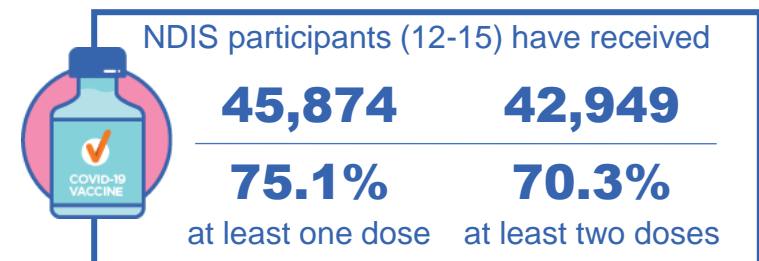
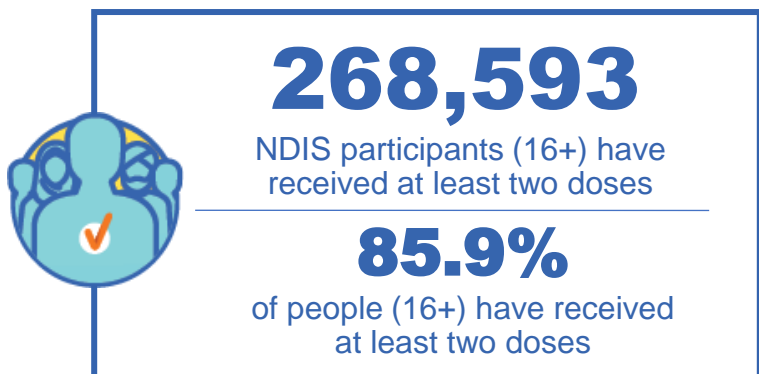
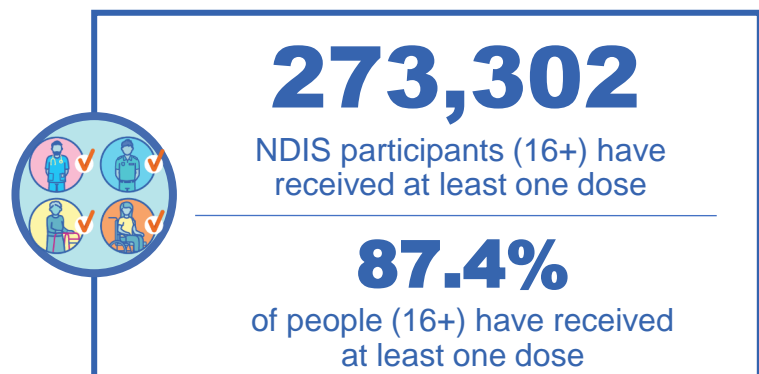
	Aged care residents with at least one dose	Aged care residents with at least two doses	Aged care residents with at least three doses	Aged care residents with at least four doses
NSW	96.9%	96.2%	92.3%	72.5%
VIC	96.8%	96.3%	93.4%	79.0%
QLD	95.0%	94.2%	90.1%	70.7%
SA	95.8%	94.6%	90.5%	72.3%
WA	96.8%	95.9%	91.7%	70.8%
TAS	95.9%	95.1%	91.5%	74.5%
NT	96.9%	95.1%	90.6%	70.1%
ACT	97.8%	97.2%	95.0%	81.9%
National	96.4%	95.6%	91.9%	73.8%

Source: Residential aged care provider self-reported COVID-19 vaccination information and matched AIR data of residents in permanent residential RACFs.

National Disability Insurance Scheme (NDIS) reported vaccinations

Data as at:
23 Oct 2022
Updated weekly

Australia's COVID-19
Vaccine Program



NDIS participant vaccinations

	% People aged 16+ with at least one dose	% People aged 16+ with at least two doses	% People aged 16+ with three doses	% People aged 16+ with four doses
ACT	89.8%	88.7%	83.6%	37.6%
NSW	87.9%	86.6%	75.3%	34.5%
NT	78.3%	76.0%	79.2%	26.6%
QLD	85.4%	83.8%	71.5%	28.9%
SA	85.4%	83.5%	78.4%	29.9%
TAS	88.0%	86.1%	76.4%	30.7%
VIC	88.6%	87.2%	77.5%	31.9%
WA	88.7%	87.0%	82.2%	32.4%
National	87.4%	85.9%	76.3%	32.0%

Source: Linkage between National Disability Insurance Agency data and the Australian Immunisation Register. Total NDIS participant numbers as at 29 September. Australian Immunisation Register data as at 23 October. Includes all participants regardless of residence type.