



Australian Government

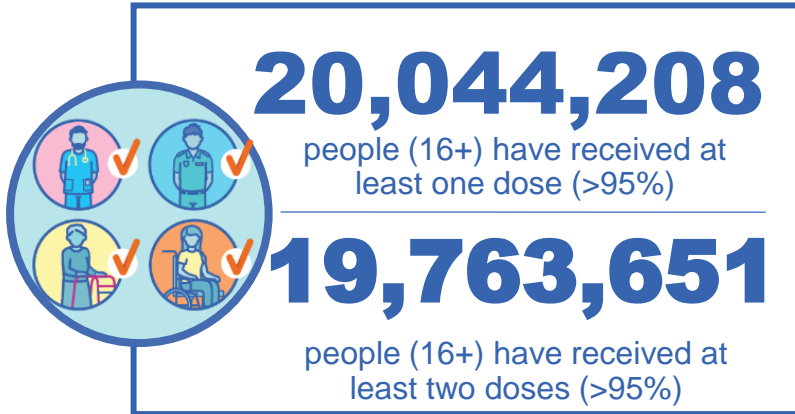
Department of Health and Aged Care

COVID-19 Vaccine Roll-out

20 October 2022

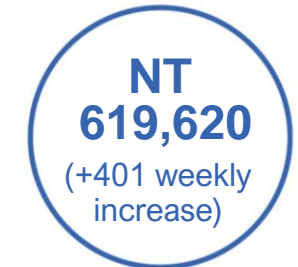
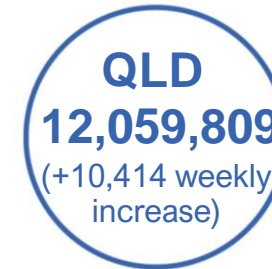
Data as at:
19 Oct 2022
Updated weekly

Total vaccine doses



63,865,635 total vaccine doses administered

+58,438 weekly increase



*Administration state breakdown indicates state in which a vaccine was administered

Source: Australian Immunisation Register

Third Doses

Data as at:
19 Oct 2022##
Updated weekly



241,225

Indigenous people who have received three or more doses

56.3%

of eligible population (428,532)



152,987

Aged Care Residents who have received three or more doses##

96.1%

of eligible population (159,199)



204,034

NDIS participants

who have received three or more doses#

76.3%

of eligible population (267,000)

23,173

NDIS residents

who have received three or more doses#

91.2%

of eligible population (25,000)



14,255,612 total people who have received three or more doses

+7,107 weekly increase

72.2% of eligible population (19,743,730)

| | Number of People | Weekly Increase | % of Eligible |
|-----|------------------|-----------------|---------------|
| ACT | 280,321 | 99 | 80.6% |
| NSW | 4,365,654 | 2,264 | 70.2% |
| NT | 133,212 | <10 | 79.6% |
| QLD | 2,478,649 | 1,640 | 65.2% |
| SA | 1,023,631 | 572 | 76.1% |
| TAS | 324,355 | <10 | 74.7% |
| VIC | 3,786,988 | 1,475 | 74.3% |
| WA | 1,727,199 | 602 | 83.5% |

135,603

doses administered to persons residing in other territories or with missing residential information


*People may belong to multiple groups and could be represented in the above breakdowns multiple times.
#NDIS participants data as at 16 October 2022. ##Aged Care Residents data as at 20 October 2022.

Source: Australian Immunisation Register

Fourth Doses

Data as at:
19 Oct 2022
Updated weekly

Australia's COVID-19
Vaccine Program



122,106
Aged Care Residents who have received four or more doses#

83.8%
of eligible population (145,713)



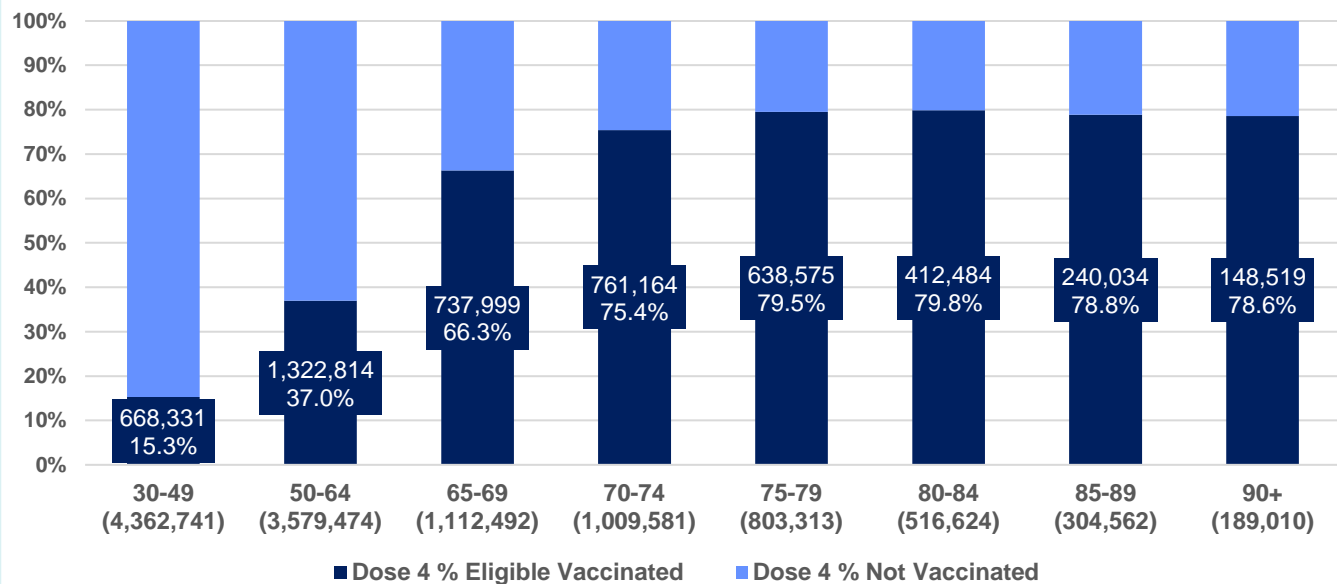
4,967,069
+34,547
41.5%
2,938,775
74.7%

total people (16+) who have received four doses
weekly increase (16+)

of eligible population (30+) (11,877,797)

total people (65+) who have received four doses
of eligible population (65+) (3,935,582)

% Individuals eligible vaccinated by current age



| | Number of People 16+ | Weekly Increase |
|-----|----------------------|-----------------|
| ACT | 105,434 | 1,194 |
| NSW | 1,590,585 | 10,050 |
| NT | 25,783 | 322 |
| QLD | 952,040 | 5,381 |
| SA | 391,763 | 3,720 |
| TAS | 133,643 | 810 |
| VIC | 1,230,362 | 8,296 |
| WA | 507,790 | 4,071 |

29,669 doses administered to persons residing in other territories or with missing residential information

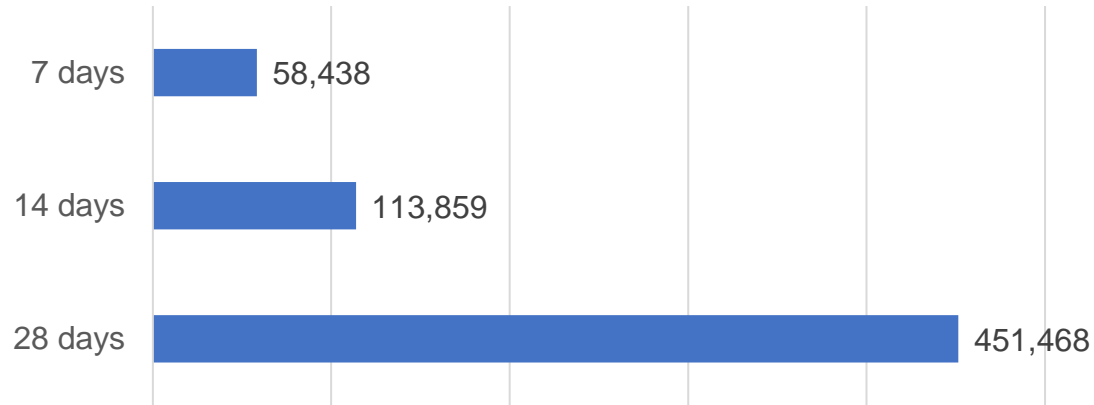
*People become eligible for a fourth dose three months after their third dose. Individuals may belong to multiple groups and could be represented in the above multiple times.
#Aged Care Residents data as at 19 October 2022.

Source: Australian Immunisation Register

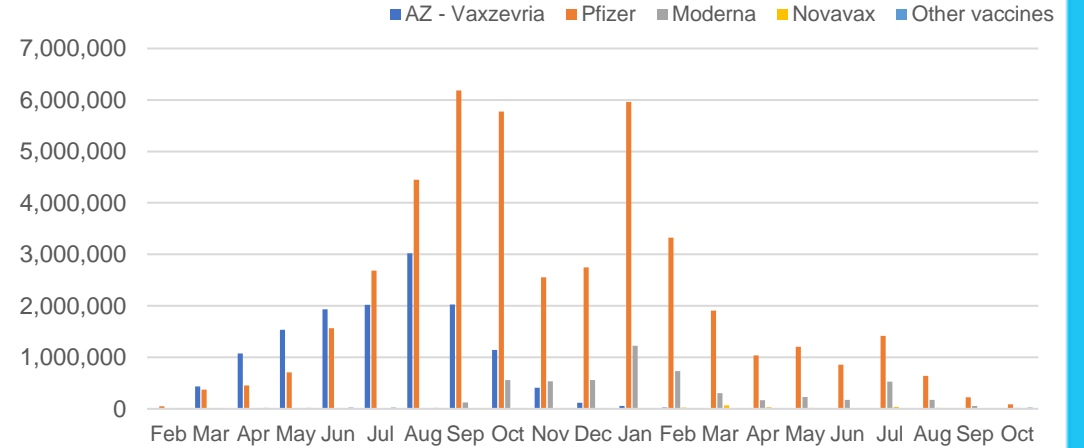
Vaccine milestone charts

Data as at:
19 Oct 2022
Updated weekly

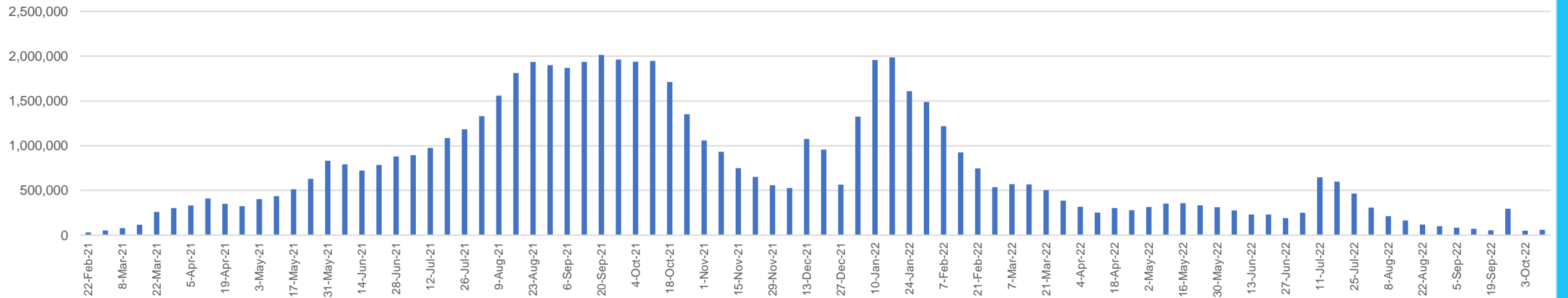
Doses Reported



Doses by administration month and vaccine type



Doses Administered by Week



*Sourced from the Australian Immunisation Register.

Data as at:
19 Oct 2022
Updated weekly

Doses by age and jurisdiction

| | AUS | ACT | NSW | NT | QLD | SA | TAS | VIC | WA |
|---------------------------|------------|---------|-----------|---------|-----------|-----------|---------|-----------|-----------|
| 5 to 11 - dose 1 | 1,159,125 | 30,993 | 347,500 | 12,287 | 199,397 | 80,888 | 27,444 | 314,829 | 134,899 |
| 5 to 11 - dose 2 | 916,624 | 27,496 | 283,701 | 8,707 | 151,917 | 64,698 | 22,868 | 248,615 | 103,172 |
| 5 to 11 - population | 2,269,663 | 40,719 | 711,525 | 25,120 | 476,567 | 149,048 | 45,549 | 568,488 | 252,235 |
| 5 to 11 % with dose 1 | 51.07% | 76.11% | 48.84% | 48.91% | 41.84% | 54.27% | 60.25% | 55.38% | 53.48% |
| 5 to 11 % with dose 2 | 40.39% | 67.53% | 39.87% | 34.66% | 31.88% | 43.41% | 50.21% | 43.73% | 40.90% |
| 12 to 15 - dose 1 | 1,031,214 | 20,039 | 316,403 | 10,369 | 200,819 | 67,125 | 22,353 | 269,044 | 113,684 |
| 12 to 15 - dose 2 | 970,437 | 19,465 | 301,191 | 9,317 | 186,388 | 63,128 | 21,151 | 255,789 | 104,675 |
| 12 to 15 - population | 1,279,387 | 20,888 | 399,352 | 13,190 | 278,225 | 85,541 | 27,469 | 313,711 | 140,783 |
| 12 to 15 % with dose 1 | 80.60% | 95.94% | 79.23% | 78.61% | 72.18% | 78.47% | 81.38% | 85.76% | 80.75% |
| 12 to 15 % with dose 2 | 75.85% | 93.19% | 75.42% | 70.64% | 66.99% | 73.80% | 77.00% | 81.54% | 74.35% |
| 16 and over - dose 1 | 20,044,208 | 352,759 | 6,305,705 | 171,425 | 3,863,518 | 1,372,513 | 442,591 | 5,159,480 | 2,095,875 |
| 16 and over - dose 2 | 19,763,651 | 347,903 | 6,224,040 | 167,557 | 3,807,373 | 1,347,451 | 434,942 | 5,099,655 | 2,070,024 |
| 16 and over - dose 3 | 14,255,612 | 280,321 | 4,365,654 | 133,212 | 2,478,649 | 1,023,631 | 324,355 | 3,786,988 | 1,727,199 |
| 16 and over - population | 20,629,070 | 364,811 | 6,504,442 | 193,211 | 4,161,009 | 1,471,062 | 465,436 | 5,279,175 | 2,185,967 |
| 16 and over % with dose 1 | 97.16% | 96.70% | 96.94% | 88.72% | 92.85% | 93.30% | 95.09% | 97.73% | 95.88% |
| 16 and over % with dose 2 | 95.80% | 95.37% | 95.69% | 86.72% | 91.50% | 91.60% | 93.45% | 96.60% | 94.70% |
| 16 and over % with dose 3 | 69.10% | 76.84% | 67.12% | 68.95% | 59.57% | 69.58% | 69.69% | 71.73% | 79.01% |
| 30 and over - dose 1 | 15,656,598 | 272,577 | 4,952,060 | 126,846 | 3,016,063 | 1,090,392 | 351,160 | 4,022,376 | 1,640,500 |
| 30 and over - dose 2 | 15,472,981 | 269,332 | 4,897,069 | 124,691 | 2,980,923 | 1,075,151 | 346,404 | 3,981,311 | 1,623,852 |
| 30 and over - dose 3 | 12,055,251 | 229,571 | 3,725,344 | 104,639 | 2,156,932 | 874,873 | 280,075 | 3,160,614 | 1,422,362 |
| 30 and over - dose 4 | 4,929,920 | 104,222 | 1,577,435 | 25,282 | 946,355 | 389,840 | 132,801 | 1,220,058 | 504,745 |
| 30 and over - population | 16,012,407 | 268,806 | 5,065,001 | 140,954 | 3,219,394 | 1,157,853 | 368,927 | 4,079,079 | 1,709,089 |
| 30 and over % with dose 1 | 97.78% | >99% | 97.77% | 89.99% | 93.68% | 94.17% | 95.18% | 98.61% | 95.99% |
| 30 and over % with dose 2 | 96.63% | >99% | 96.68% | 88.46% | 92.59% | 92.86% | 93.89% | 97.60% | 95.01% |
| 30 and over % with dose 3 | 75.29% | 85.40% | 73.55% | 74.24% | 67.00% | 75.56% | 75.92% | 77.48% | 83.22% |
| 30 and over % with dose 4 | 30.79% | 38.77% | 31.14% | 17.94% | 29.40% | 33.67% | 36.00% | 29.91% | 29.53% |
| 65 and over - dose 1 | 4,348,656 | 63,837 | 1,406,239 | 20,313 | 844,788 | 347,306 | 113,852 | 1,085,188 | 427,081 |
| 65 and over - dose 2 | 4,312,975 | 63,125 | 1,394,879 | 20,067 | 838,906 | 344,744 | 113,178 | 1,075,964 | 424,262 |
| 65 and over - dose 3 | 3,965,172 | 59,837 | 1,270,236 | 18,241 | 770,791 | 323,201 | 106,762 | 981,680 | 402,628 |
| 65 and over - dose 4 | 2,938,775 | 49,190 | 936,642 | 11,356 | 585,300 | 248,189 | 83,610 | 709,088 | 295,961 |
| 65 and over - population | 4,313,779 | 60,463 | 1,393,416 | 21,593 | 864,448 | 352,458 | 116,037 | 1,072,562 | 431,884 |
| 65 and over % with dose 1 | >99% | >99% | >99% | 94.07% | 97.73% | 98.54% | 98.12% | >99% | 98.89% |
| 65 and over % with dose 2 | >99% | >99% | >99% | 92.93% | 97.05% | 97.81% | 97.54% | >99% | 98.24% |
| 65 and over % with dose 3 | 91.92% | 98.96% | 91.16% | 84.48% | 89.17% | 91.70% | 92.01% | 91.53% | 93.23% |
| 65 and over % with dose 4 | 68.13% | 81.36% | 67.22% | 52.59% | 67.71% | 70.42% | 72.05% | 66.11% | 68.53% |

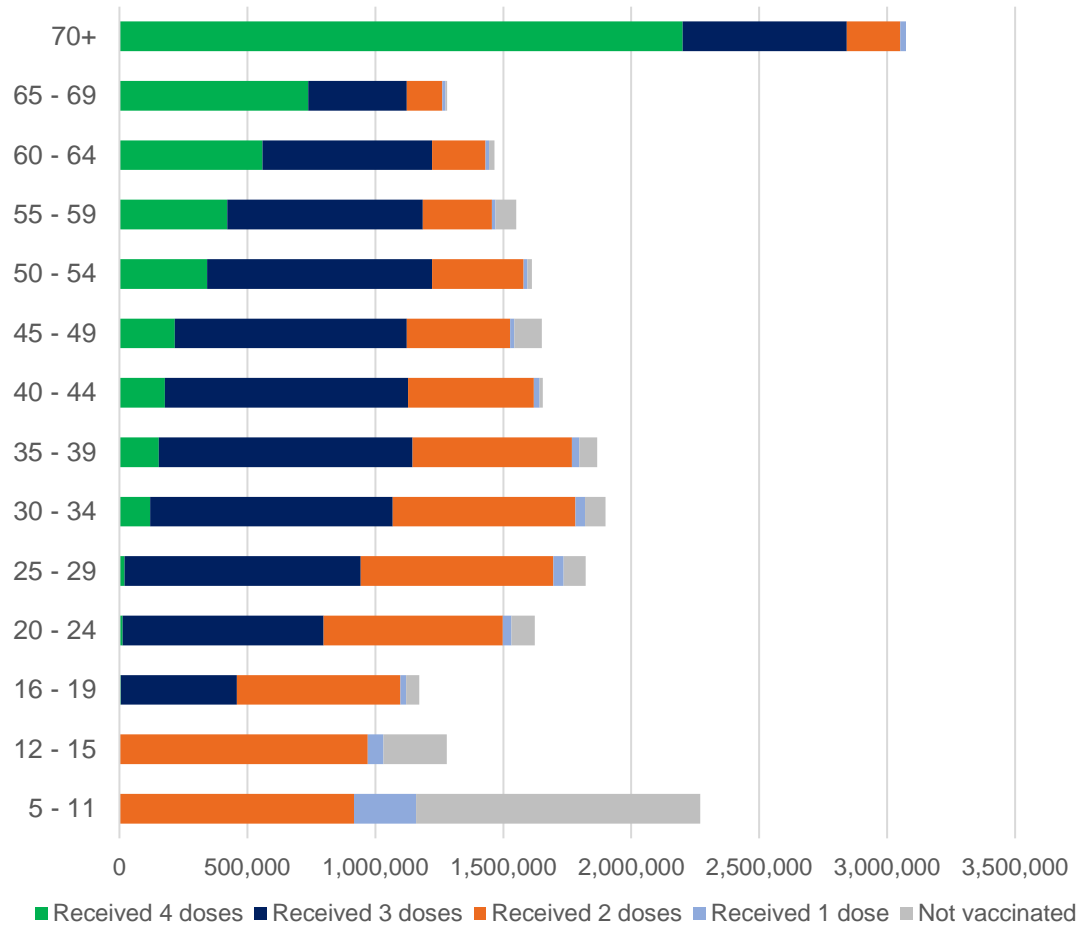
*National population will not equal sum of listed jurisdictions due to a small number of people counted in national population residing in some 'other' territories. Sum of state doses will not add to national total as some records are unable to be geocoded to a State or Territory.

Doses sourced from Australian Immunisation Register, population from ABS ERP June 2021

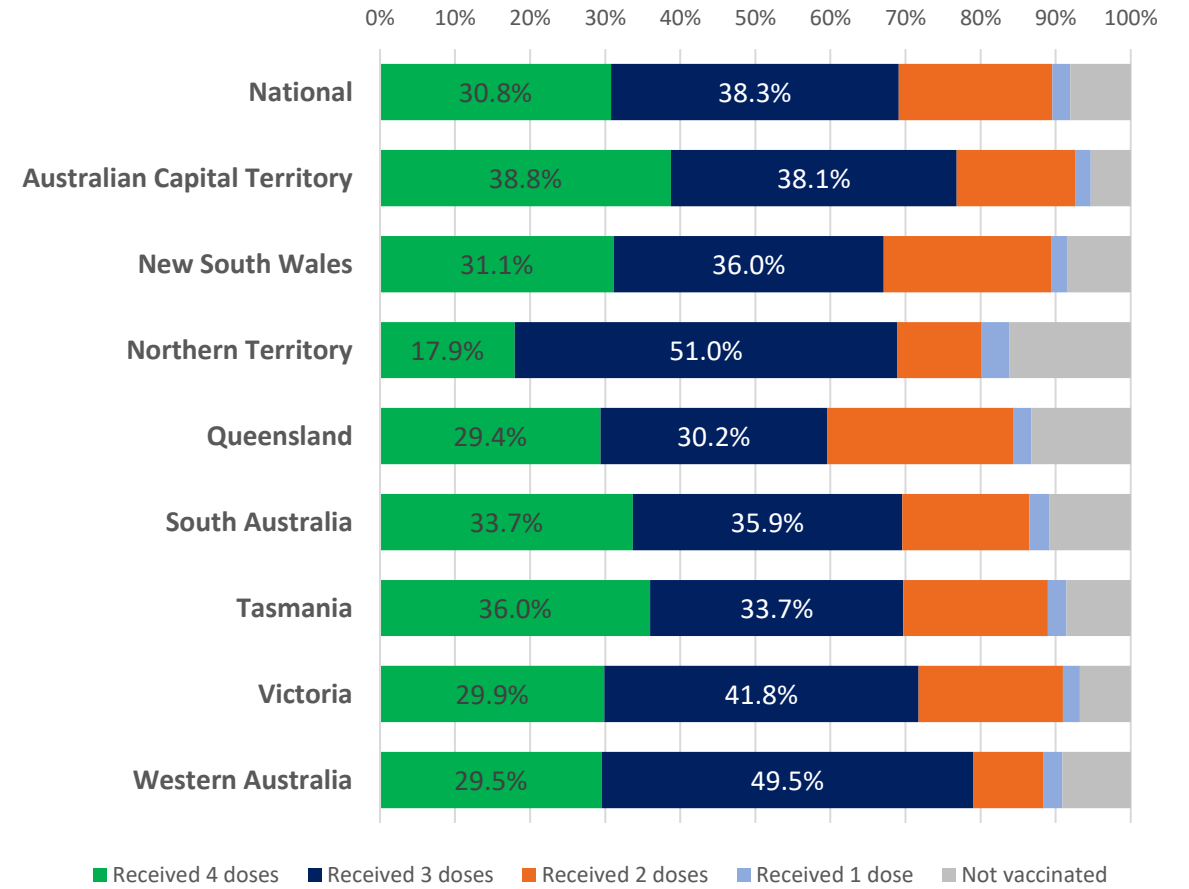
Data as at:
19 Oct 2022
Updated weekly

Vaccinations by age and location

Number of people vaccinated by age

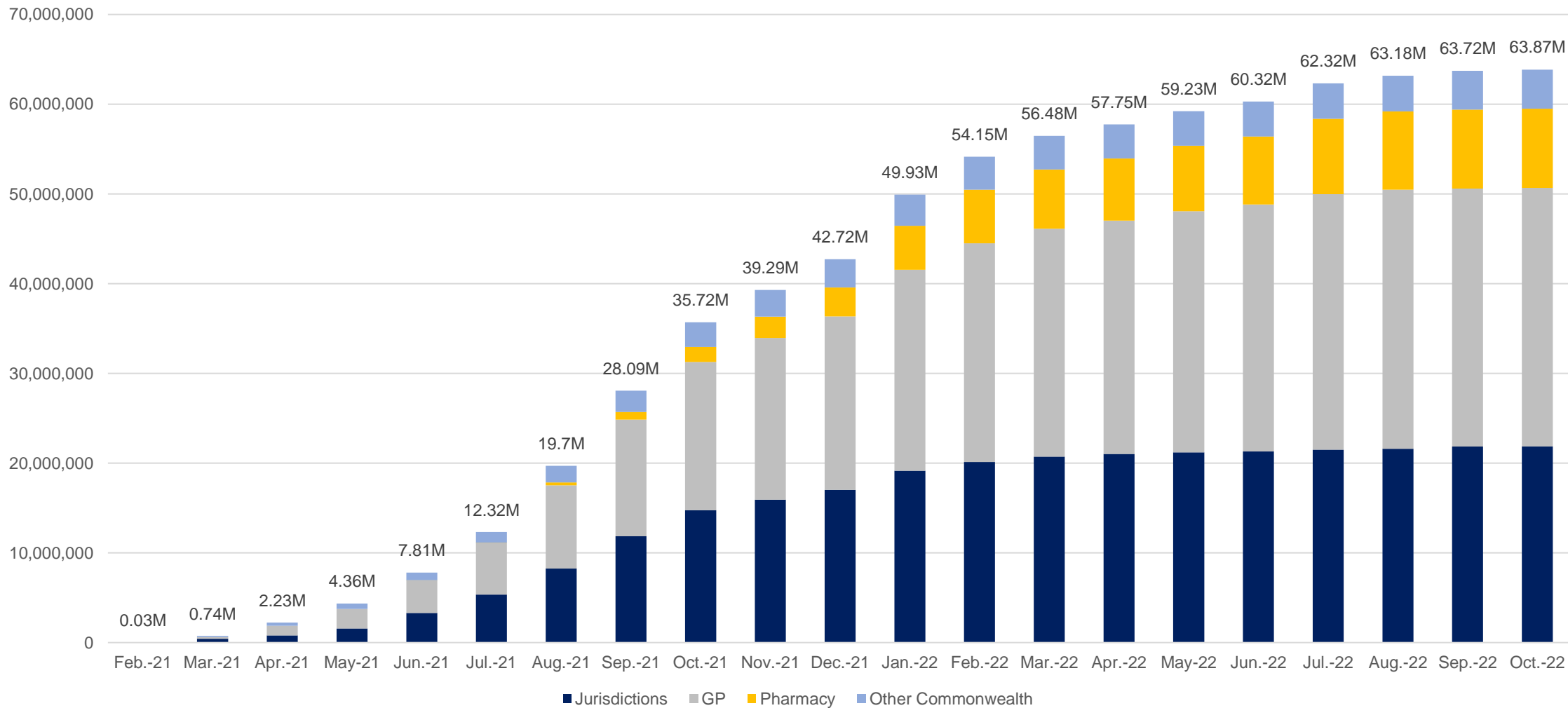


Individuals vaccinated by residential location



Data as at:
19 Oct 2022
Updated weekly

Cumulative doses administered by channel



Source: Australian Immunisation Register

Data as at:
19 Oct 2022
Updated weekly

Commonwealth primary care



Primary care vaccine administration sites

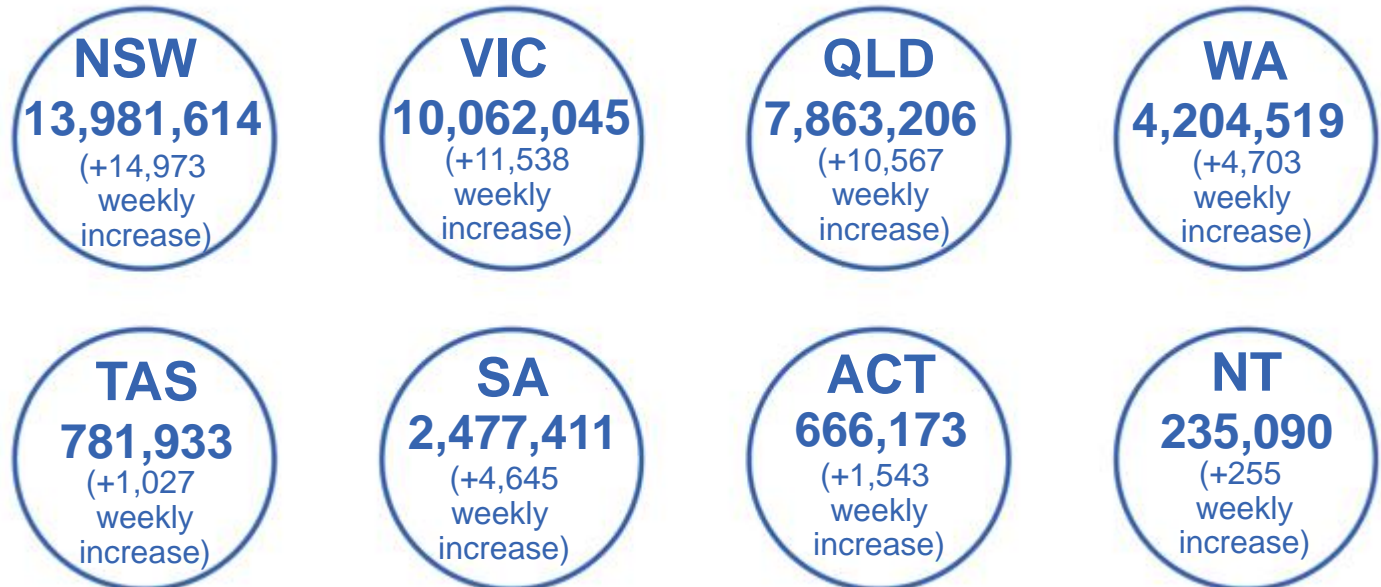
| | | | |
|--------------|-----------|------------|--------------|
| 3,896 | 76 | 136 | 2,776 |
| GPs | CVCs | ACCHS | Pharmacies |



40,652,450 total vaccine doses administered
in primary care settings
+50,967 weekly increase

Primary care vaccinations by provider type

| | Doses administered | Weekly increase |
|-------------------|--------------------|-----------------|
| General Practice* | 31,747,144 | 25,336 |
| Pharmacy | 8,905,306 | 25,631 |



380,459

doses administered to persons residing in other territories or with missing residential information

*General practice includes Commonwealth Vaccination Clinics, Aboriginal Community Health Centres, Royal Flying Doctor Service and other Commonwealth vaccination facilities

Source: Australian Immunisation Register

Aboriginal and Torres Strait Islander peoples

Number of people vaccinated

Data as at:
19 Oct 2022
Updated weekly

Australia's COVID-19
Vaccine Program



People (16+) with at least one dose

447,489 **85.5%**

People (16+) with at least two doses

430,200 **82.2%**



Eligible people (16+) with three doses

241,225 **56.3%**

Eligible people (30+) with four doses

60,011 **33.7%**



People (12-15) with at least one dose

46,600 **66.1%**

People (12-15) with at least two doses

40,504 **57.5%**

138 Aboriginal community controlled health services (ACCHS) sites

| | | | | | | | |
|------------|------------|-----------|------------|-----------|------------|------------|-----------|
| 0# | 30 | 21 | 39 | 13 | 2 | 12 | 21 |
| ACT | NSW | NT | QLD | SA | TAS | VIC | WA |

| Residential State | Individuals Dose 1 % (16+) | Individuals Dose 2 % (16+) | Individuals Dose 3 % Eligible (aged 16+) | Individuals Dose 4 % Eligible (aged 30+) |
|------------------------------------|-------------------------------|-------------------------------|---|---|
| ACT | 92.2% | 90.0% | 65.3% | 39.5% |
| NSW | 87.8% | 86.0% | 52.9% | 37.1% |
| NT | 90.1% | 86.1% | 70.1% | 24.2% |
| QLD | 82.4% | 78.8% | 49.0% | 36.2% |
| SA | 81.3% | 76.0% | 61.1% | 36.9% |
| TAS | 89.2% | 86.9% | 60.2% | 40.3% |
| VIC | 90.9% | 89.0% | 62.2% | 34.8% |
| WA | 87.5% | 82.1% | 66.5% | 28.4% |
| Unknown/Other Territories | 73.4% | 68.3% | 50.5% | 23.2% |
| National Coverage % | 85.5% | 82.2% | 56.3% | 33.7% |
| Number with a Dose | 447,489 | 430,200 | 241,225 | 60,011 |
| Total / Eligible Population | 523,275 | 523,275 | 428,532 | 178,129 |

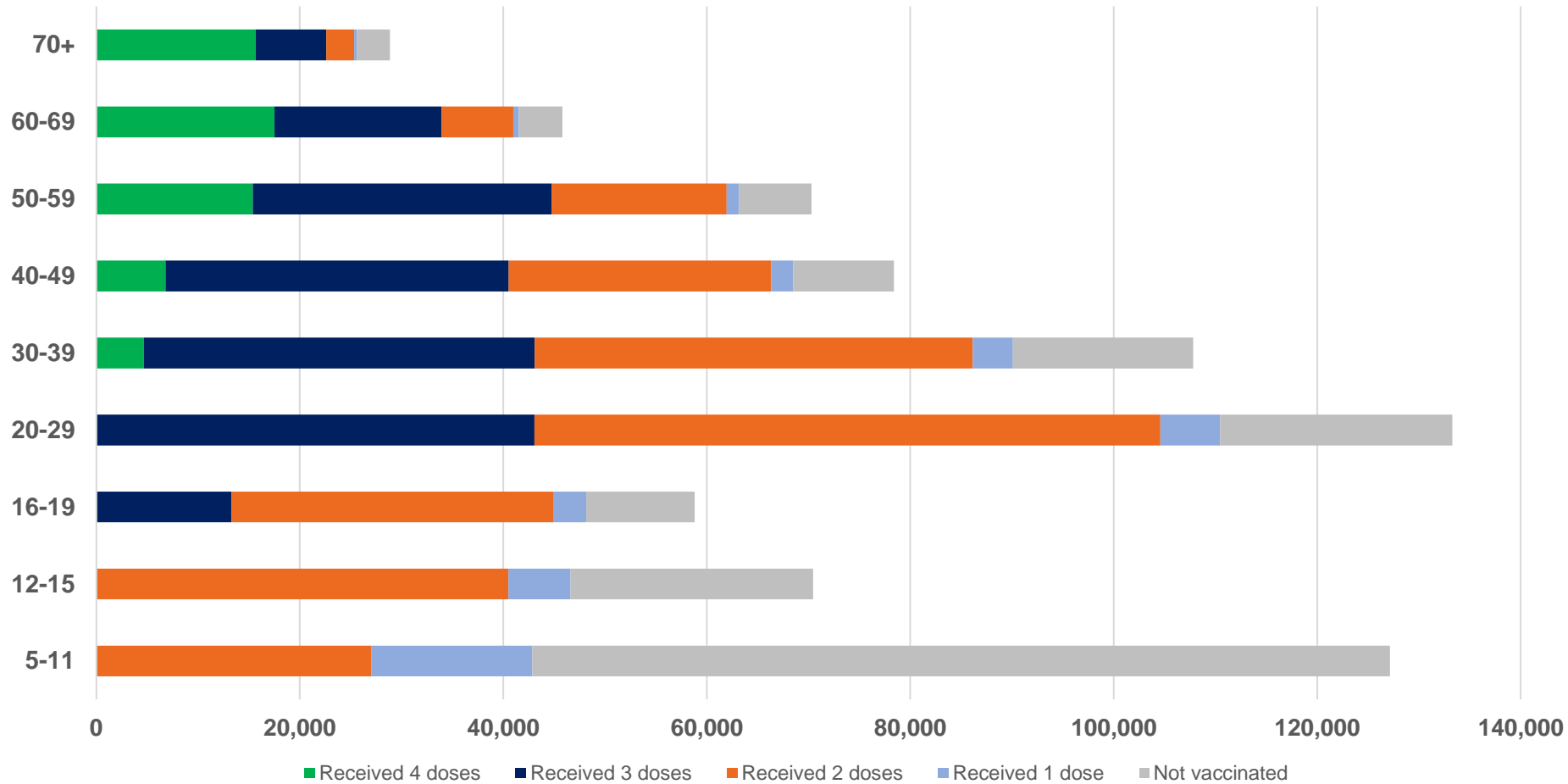
Identifying as Aboriginal and Torres Strait Islander is optional and the estimated population may be under reported. Numbers include all Aboriginal and Torres Strait Islander peoples who have received a vaccination, and are not limited to those administered in an ACCHS setting. The total population refers to the number of individuals that identify as Aboriginal and Torres Strait Islander in the Australian Immunisation Register, while the eligible population refers to the number of these individuals who meet the criteria for a further dose (based on completion of previous doses, age, and time period elapsed since last dose). Please note there may be people under 30 who are eligible, but these are not included in coverage rates or population to protect privacy.

#ACCHS in the ACT are currently operating as Commonwealth Vaccine Clinics so not included to avoid double counting.

Aboriginal and Torres Strait Islander peoples

Number of people vaccinated by age

Data as at:
19 Oct 2022
Updated weekly



Source: Australian Immunisation Register

Individuals with Culturally and Linguistically Diverse (CALD) backgrounds data

**Data as at:
9 Oct 2022
Updated weekly**

**Australia's COVID-19
Vaccine Program**

People over the age of 16

| CALD population * | Total number of individuals in cohort | % People with at least one dose | % People who received two doses | % of eligible people who received three or more doses |
|--|---------------------------------------|---------------------------------|---------------------------------|---|
| General population | 20,039,901 | >95.0% | >95.0% | 72.2% |
| People born overseas | 4,339,180 | 94.5% | 94.0% | 73.2% |
| Speaks a language other than English at home | 4,011,622 | 94.1% | 93.5% | 69.2% |

| | General population | | | Born Overseas | | | Speaks a language other than English at home | | |
|-----|--------------------------|--------------------------|---|--------------------------|--------------------------|---|--|--------------------------|---|
| | % with at least one dose | % who received two doses | % of eligible people who received three or more doses | % with at least one dose | % who received two doses | % of eligible people who received three or more doses | % with at least one dose | % who received two doses | % of eligible people who received three or more doses |
| ACT | >95.0% | >95.0% | 80.6% | >95.0% | >95.0% | 78.9% | >95.0% | >95.0% | 76.3% |
| NSW | >95.0% | >95.0% | 70.2% | 94.9% | 94.4% | 70.7% | 94.1% | 93.5% | 66.1% |
| NT | 88.7% | 86.7% | 79.6% | >95.0% | 94.7% | 88.2% | 94.1% | 93.6% | 87.0% |
| Qld | 92.8% | 91.5% | 65.2% | 92.2% | 91.5% | 67.6% | 92.5% | 91.7% | 64.2% |
| SA | 93.3% | 91.6% | 76.1% | 92.8% | 91.9% | 75.5% | 91.8% | 90.8% | 71.8% |
| Tas | >95.0% | 93.5% | 74.7% | 93.4% | 92.8% | 76.3% | 93.3% | 92.7% | 72.4% |
| Vic | >95.0% | >95.0% | 74.3% | >95.0% | 94.8% | 73.4% | 94.7% | 94.1% | 69.6% |
| WA | >95.0% | 94.7% | 83.5% | >95.0% | 94.6% | 85.6% | >95.0% | 94.7% | 83.6% |

*Individuals with Culturally and Linguistically Diverse (CALD) backgrounds are as reported in the 2021 Census, excluding those who have since departed Australia; deceased persons; those born in the UK, Ireland or NZ; and Aboriginal and/or Torres Strait Islander peoples. There is overlap across CALD cohorts where individuals may have reported they had more than one CALD characteristic in the 2021 Census.

Small negative changes may appear when compared with the previous report due to perturbation, in particular for small population groups.

Source: Australian Immunisation Register linked to the Multi-Agency Data Integration Project (Census 2021 characteristics). Coverage rates for the general population are as published for 12 October 2022.

Data as at:
20 Oct 2022
Updated weekly

Residential aged care vaccination rollout



160,459
Aged care residents with at least one dose



159,199
Aged care residents with at least two doses



152,987
Aged care residents with at least three doses



122,205
Aged care residents with at least four doses



>99%
Aged care workers with at least two doses nationally

Aged care resident vaccinations

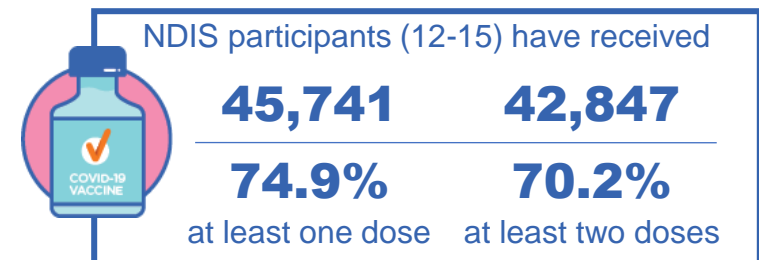
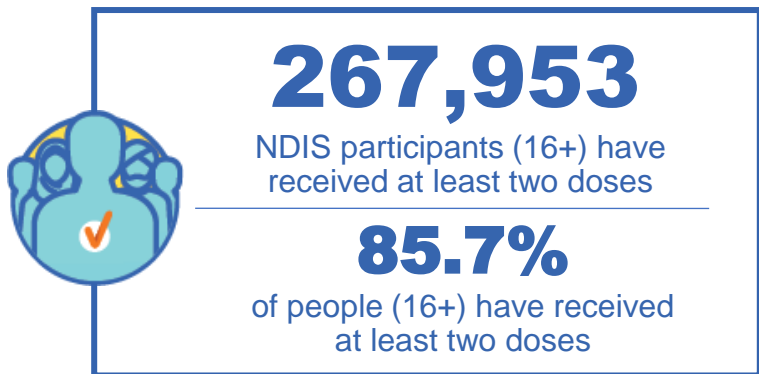
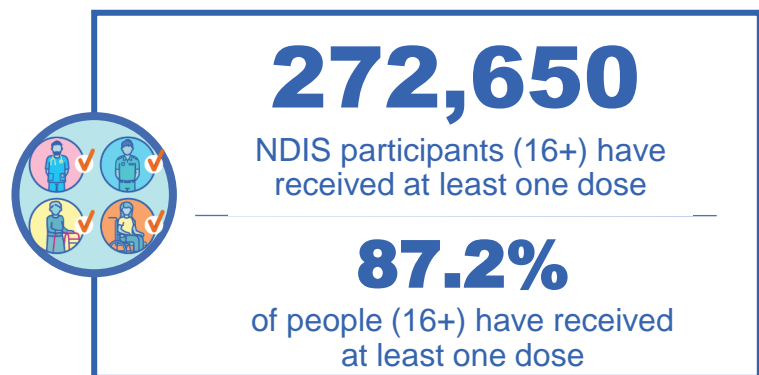
| | Aged care residents with at least one dose | Aged care residents with at least two doses | Aged care residents with at least three doses | Aged care residents with at least four doses |
|-----------------|--|---|---|--|
| NSW | 96.9% | 96.2% | 92.3% | 72.3% |
| VIC | 96.8% | 96.3% | 93.4% | 78.8% |
| QLD | 95.0% | 94.2% | 90.0% | 70.1% |
| SA | 95.8% | 94.6% | 90.5% | 72.1% |
| WA | 96.8% | 95.9% | 91.6% | 70.0% |
| TAS | 95.9% | 95.0% | 91.3% | 73.2% |
| NT | 96.9% | 95.1% | 90.6% | 70.1% |
| ACT | 97.8% | 97.2% | 94.9% | 80.6% |
| National | 96.4% | 95.6% | 91.9% | 73.4% |

Source: Residential aged care provider self-reported COVID-19 vaccination information and matched AIR data of residents in permanent residential RACFs.

National Disability Insurance Scheme (NDIS) reported vaccinations

Data as at:
16 Oct 2022
Updated weekly

Australia's COVID-19
Vaccine Program



NDIS participant vaccinations

| | % People aged 16+ with at least one dose | % People aged 16+ with at least two doses | % People aged 16+ with three doses | % People aged 16+ with four doses |
|----------|--|---|------------------------------------|-----------------------------------|
| ACT | 89.6% | 88.5% | 83.7% | 37.2% |
| NSW | 87.7% | 86.4% | 75.3% | 34.3% |
| NT | 78.1% | 75.8% | 79.3% | 26.4% |
| QLD | 85.2% | 83.6% | 71.6% | 28.7% |
| SA | 85.1% | 83.2% | 78.4% | 29.5% |
| TAS | 87.7% | 85.8% | 76.4% | 30.5% |
| VIC | 88.4% | 87.0% | 77.5% | 31.6% |
| WA | 88.4% | 86.8% | 82.2% | 32.1% |
| National | 87.2% | 85.7% | 76.3% | 31.7% |

Source: Linkage between National Disability Insurance Agency data and the Australian Immunisation Register. Total NDIS participant numbers as at 29 September. Australian Immunisation Register data as at 16 October. Includes all participants regardless of residence type.