



**Australian Government**  

---

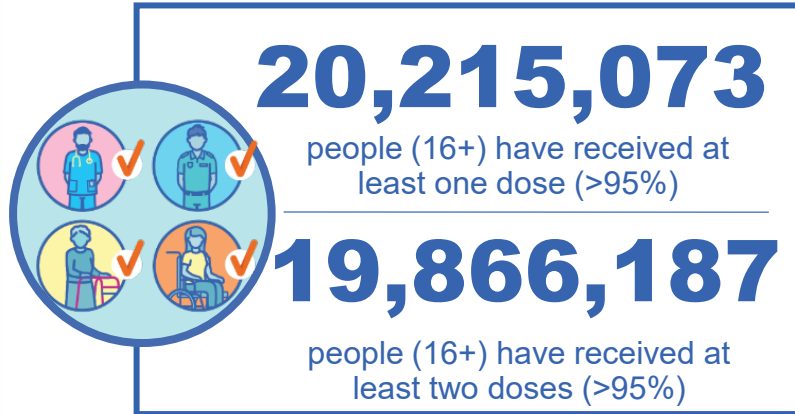
**Department of Health and Aged Care**

# COVID-19 Vaccine Roll-out

**09 September 2022**

Data as at:  
08 Sep 2022

## Total vaccine doses



**63,280,978** total vaccine doses administered nationally as at 08 September

**+15,486** recorded in the last 24 hours




\*Administration state breakdown indicates state in which a vaccine was administered

Source: Australian Immunisation Register


Data as at: 08 Sep 2022

# Third Doses




**239,089**  
Indigenous people who have received three or more doses

**55.8%**  
of eligible population (428,506)




**162,457**  
Aged Care Residents who have received three or more doses##

**95.4%**  
of eligible population (170,310)



<b>201,767</b> NDIS participants who have received three or more doses#	<b>22,933</b> NDIS residents who have received three or more doses#
<b>76.4%</b> of eligible population (264,000)	<b>91.1%</b> of eligible population (25,000)



**14,227,605** total people who have received three or more doses

**+2,816** daily increase

**71.7%** of eligible population (19,831,600)

	Number of People	Daily Increase	% of Eligible
NSW	4,355,957	949	69.6%
VIC	3,774,010	420	73.9%
QLD	2,476,510	319	64.8%
WA	1,724,999	205	83.2%
SA	1,022,377	218	75.6%
TAS	325,125	41	74.3%
ACT	279,459	46	80.2%
NT	132,645	<10	79.1%

**136,523**


doses administered to persons residing in other territories or with missing residential information

\*People may belong to multiple groups and could be represented in the above breakdowns multiple times.  
# NDIS participants data as at 06 September 2022. ## Aged Care Residents data as at 08 September 2022.

Source: Australian Immunisation Register

Data as at:  
08 Sep 2022

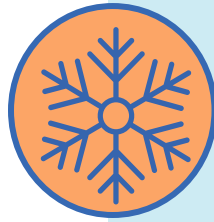
# Fourth Doses



**120,603**  
Aged Care Residents who have received four or more doses#

---

**81.6%**  
of eligible population (147,720)



**4,769,298**  
**+10,214**  
**40.3%**  
**2,885,579**  
**73.1%**

total people (16+) who have received four doses  
daily increase (16+)

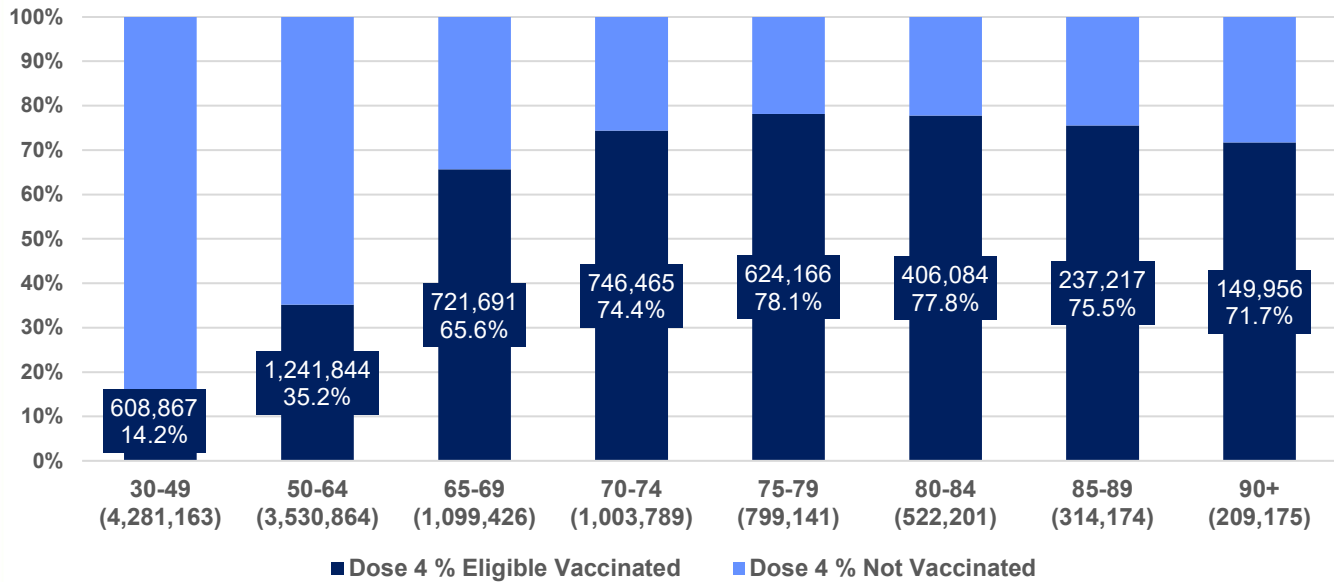
---

of eligible population (30+) (11,759,933)

---

total people (65+) who have received four doses  
of eligible population (65+) (3,947,906)

% Individuals eligible vaccinated by current age



	Number of People 16+	Daily Increase
ACT	99,448	255
NSW	1,531,200	3,173
NT	23,920	102
QLD	922,081	1,632
SA	373,567	881
TAS	128,827	206
VIC	1,179,715	2,546
WA	482,583	1,207

**27,957** doses administered to persons residing in other territories or with missing residential information

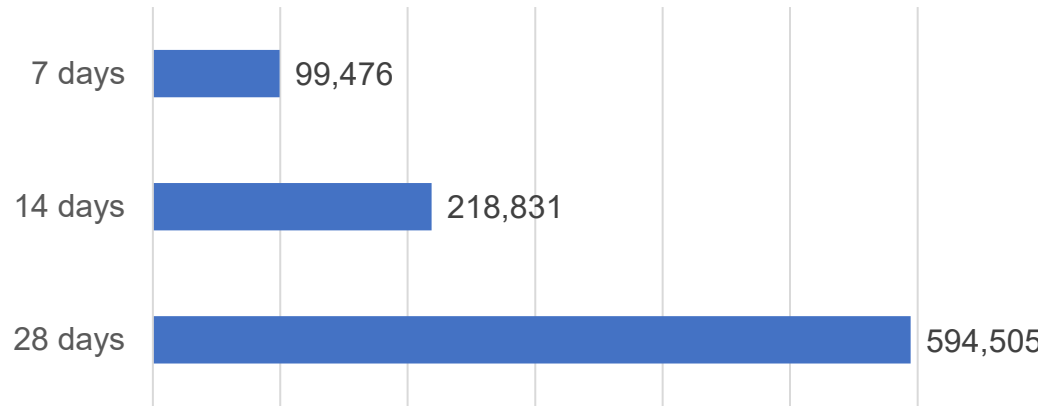
\*People become eligible for a fourth dose three months after their third dose. Individuals may belong to multiple groups and could be represented in the above multiple times.  
#Aged Care Residents data as at 08 September 2022.

Source: Australian Immunisation Register

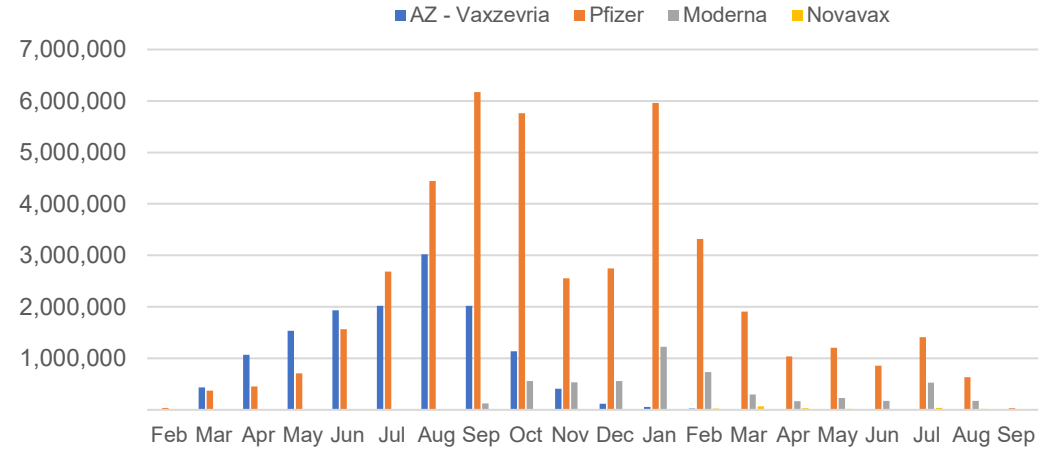
# Vaccine milestone charts

Data as at:  
04 Sep 2022  
Updated weekly

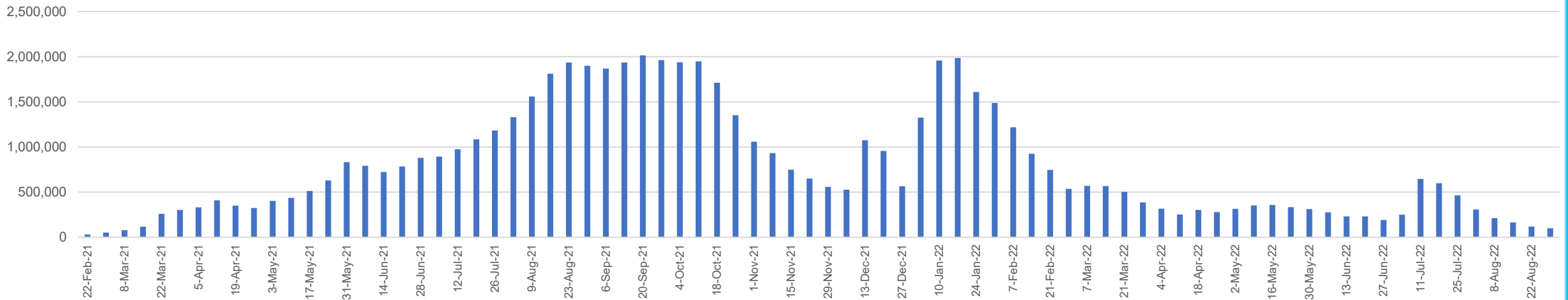
Doses Reported



Doses by administration month and vaccine type



Doses Administered by Week



\*Sourced from the Australian Immunisation Register.

Data as at:  
04 Sep 2022  
Updated weekly

## Doses by age and jurisdiction

	AUS	ACT	NSW	NT	QLD	SA	TAS	VIC	WA
5 to 11 - dose 1	1,178,247	31,428	353,006	12,684	202,895	82,308	27,978	319,978	137,410
5 to 11 - dose 2	923,632	27,691	284,966	8,817	153,238	65,308	23,256	250,774	104,300
5 to 11 - population	2,276,638	39,789	716,460	24,750	478,731	148,816	45,033	578,499	244,154
5 to 11 % with dose 1	51.75%	78.99%	49.27%	51.25%	42.38%	55.31%	62.13%	55.31%	56.28%
5 to 11 % with dose 2	40.57%	69.59%	39.77%	35.62%	32.01%	43.89%	51.64%	43.35%	42.72%
12 to 15 - dose 1	1,039,606	20,146	319,243	10,548	202,876	67,481	22,474	271,275	114,420
12 to 15 - dose 2	981,474	19,575	304,715	9,477	188,924	63,643	21,348	258,800	105,741
12 to 15 - population	1,243,990	19,693	390,330	13,060	270,146	82,747	26,308	308,611	132,869
12 to 15 % with dose 1	83.57%	>99%	81.79%	80.77%	75.10%	81.55%	85.43%	87.90%	86.11%
12 to 15 % with dose 2	78.90%	>99%	78.07%	72.57%	69.93%	76.91%	81.15%	83.86%	79.58%
16 and over - dose 1	20,209,451	354,897	6,367,410	172,884	3,891,974	1,384,942	447,257	5,195,265	2,109,006
16 and over - dose 2	19,861,134	348,869	6,264,293	168,184	3,827,402	1,355,141	438,268	5,113,230	2,077,084
16 and over - dose 3	14,217,046	279,304	4,352,218	132,609	2,475,056	1,021,569	324,946	3,771,975	1,724,335
16 and over - population	20,619,959	344,037	6,565,651	190,571	4,112,707	1,440,400	440,172	5,407,574	2,114,978
16 and over % with dose 1	98.01%	>99%	96.98%	90.72%	94.63%	96.15%	>99%	96.07%	>99%
16 and over % with dose 2	96.32%	>99%	95.41%	88.25%	93.06%	94.08%	>99%	94.56%	98.21%
16 and over % with dose 3	68.95%	81.18%	66.29%	69.59%	60.18%	70.92%	73.82%	69.75%	81.53%
30 and over - dose 1	15,818,572	274,638	5,011,230	127,875	3,043,712	1,102,806	355,631	4,060,969	1,652,637
30 and over - dose 2	15,586,311	270,604	4,940,764	125,249	3,001,757	1,084,041	349,855	4,004,996	1,631,437
30 and over - dose 3	12,047,066	229,050	3,724,046	104,184	2,157,306	874,930	280,904	3,155,899	1,420,024
30 and over - dose 4	4,696,196	97,344	1,506,837	23,048	910,585	368,570	127,040	1,160,473	475,481
30 and over - population	15,805,337	258,148	5,042,108	140,343	3,148,826	1,126,262	349,703	4,096,873	1,639,833
30 and over % with dose 1	>99%	>99%	>99%	91.12%	96.66%	97.92%	>99%	>99%	>99%
30 and over % with dose 2	98.61%	>99%	97.99%	89.24%	95.33%	96.25%	>99%	97.76%	>99%
30 and over % with dose 3	76.22%	88.73%	73.86%	74.24%	68.51%	77.68%	80.33%	77.03%	86.60%
30 and over % with dose 4	29.71%	37.71%	29.89%	16.42%	28.92%	32.73%	36.33%	28.33%	29.00%
65 and over - dose 1	4,486,880	65,643	1,453,318	20,733	870,161	358,498	117,796	1,118,940	438,044
65 and over - dose 2	4,426,364	64,613	1,433,775	20,391	860,012	353,964	116,483	1,103,131	433,106
65 and over - dose 3	4,005,058	60,376	1,284,914	18,211	778,787	326,426	108,067	990,620	405,063
65 and over - dose 4	2,870,479	48,181	916,628	10,789	574,228	241,288	81,664	692,206	287,212
65 and over - population	4,192,882	57,745	1,366,640	20,994	831,881	338,903	110,799	1,057,498	407,530
65 and over % with dose 1	>99%	>99%	>99%	98.76%	>99%	>99%	>99%	>99%	>99%
65 and over % with dose 2	>99%	>99%	>99%	97.13%	>99%	>99%	>99%	>99%	>99%
65 and over % with dose 3	95.52%	>99%	94.02%	86.74%	93.62%	96.32%	97.53%	93.68%	>99%
65 and over % with dose 4	68.46%	83.44%	67.07%	51.39%	69.03%	71.20%	73.70%	65.46%	70.48%

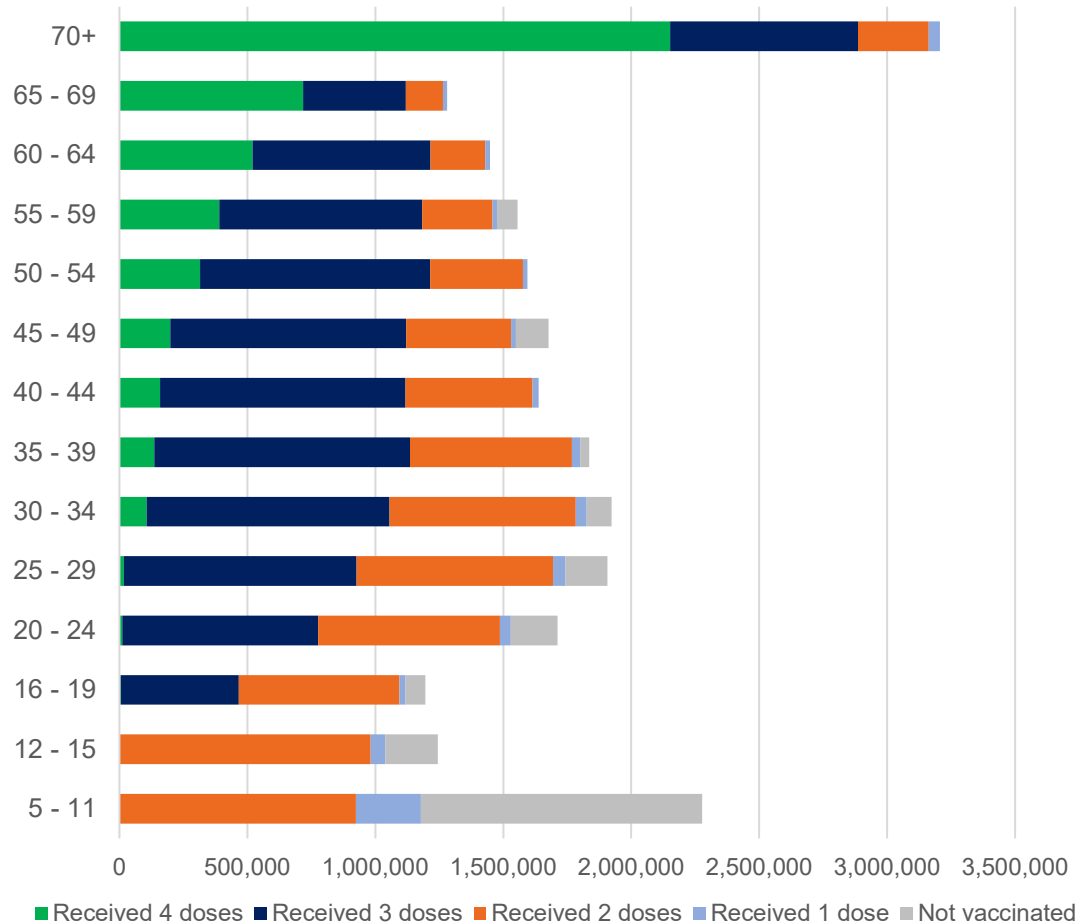
\*National population will not equal sum of listed jurisdictions due to a small number of people counted in national population residing in some 'other' territories. Sum of state doses will not add to national total as some records are unable to be geocoded to a State or Territory.

Doses sourced from Australian Immunisation Register, population from ABS ERP June 2020

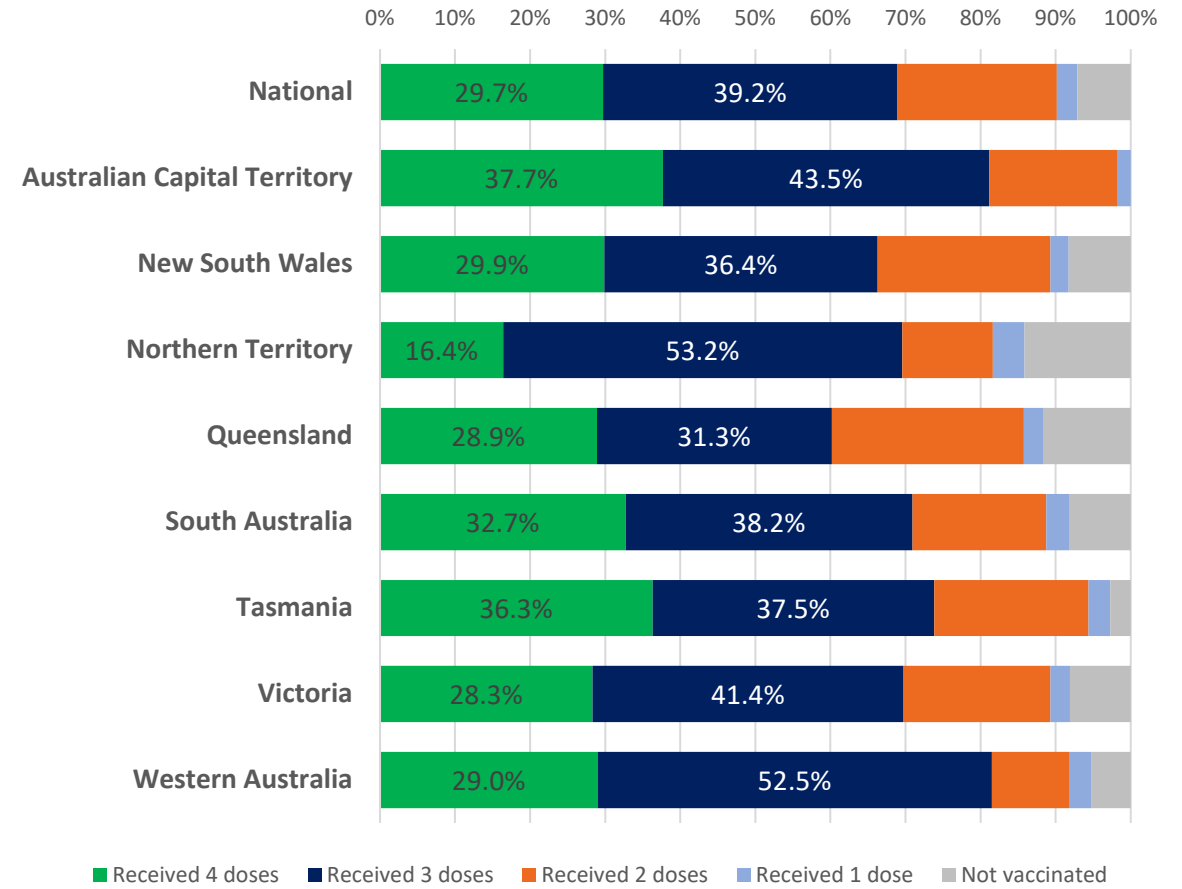
Data as at:  
04 Sep 2022  
Updated weekly

# Vaccinations by age and location

Number of people vaccinated by age

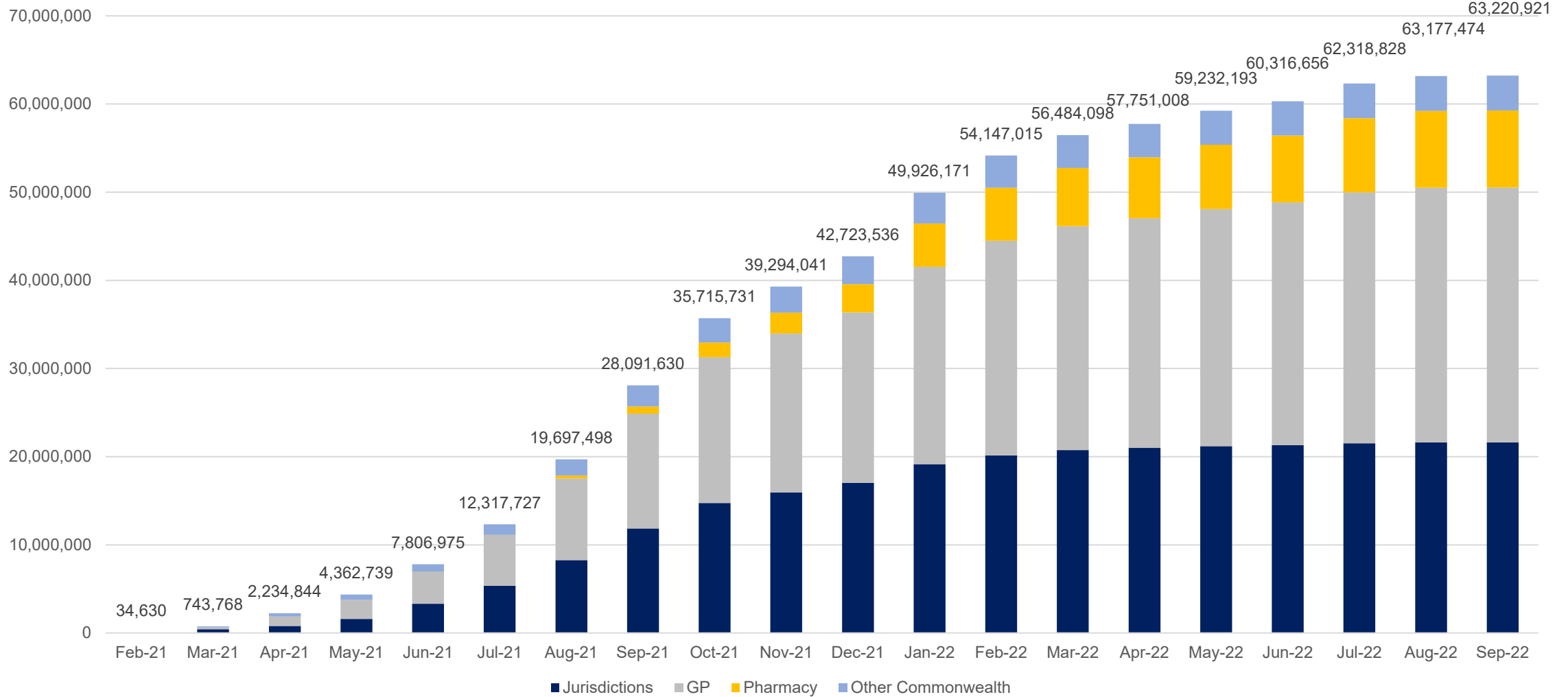


Individuals vaccinated by residential location



Data as at:  
04 Sep 2022  
Updated weekly

# Cumulative doses administered by channel



Source: Australian Immunisation Register



# Commonwealth primary care

Data as at:  
04 Sep 2022  
Updated weekly

Australia's COVID-19  
Vaccine Program



## Primary care vaccine administration sites

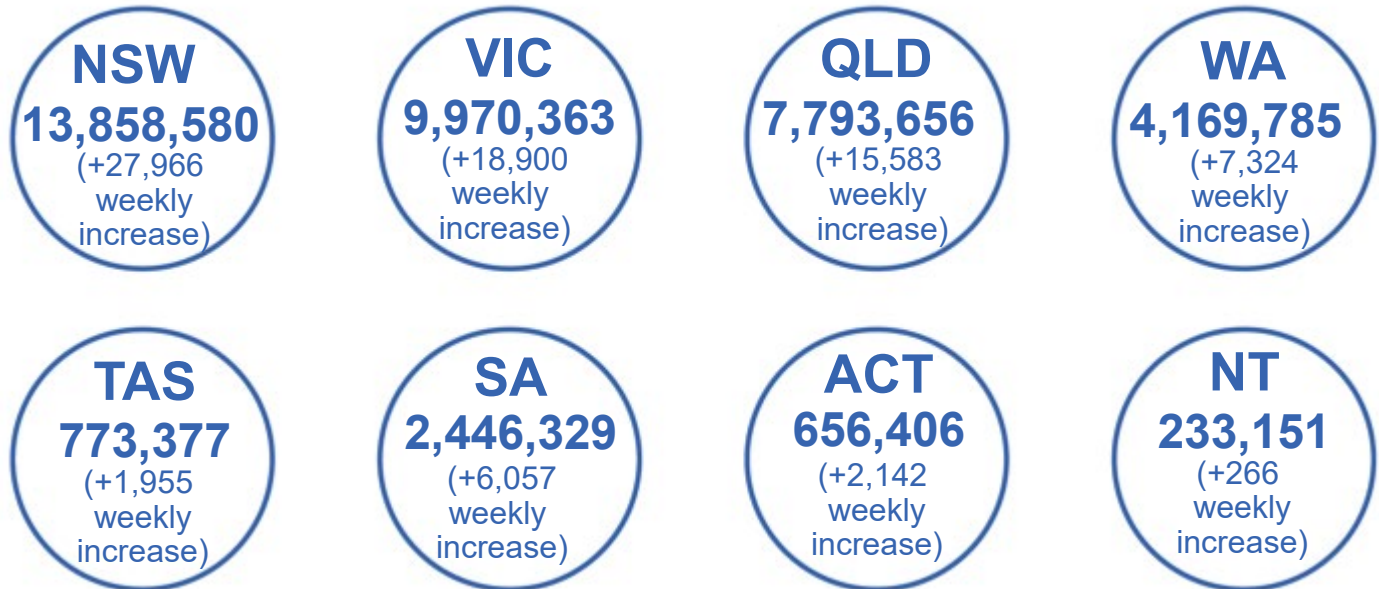
<b>5,496</b>	<b>115</b>	<b>168</b>	<b>3,562</b>
GPs	CVCs	ACCHS	Pharmacies



**40,271,196** total vaccine doses administered  
primary care settings as at 04 September  
**+86,387** recorded in the last week

## Primary care vaccinations by provider type

	Doses administered	7 day increase
<b>General Practice*</b> includes other Commonwealth	31,533,917	51,613
<b>Pharmacy</b>	8,737,279	34,774



**369,549**

doses administered to persons residing in other territories or with missing residential information

\*General practice includes Commonwealth Vaccination Clinics, Aboriginal Community Health Centres, Royal Flying Doctor Service and other Commonwealth vaccination facilities

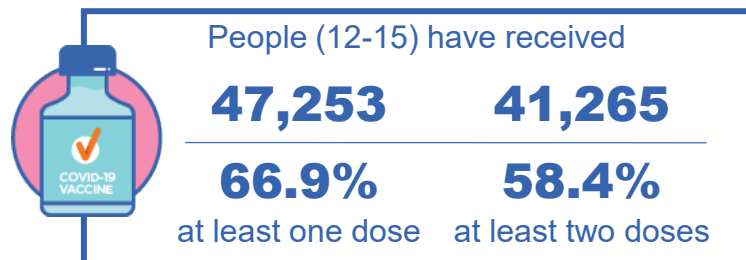
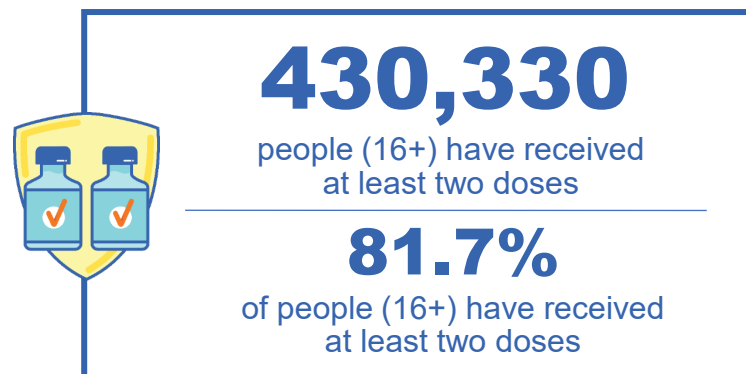
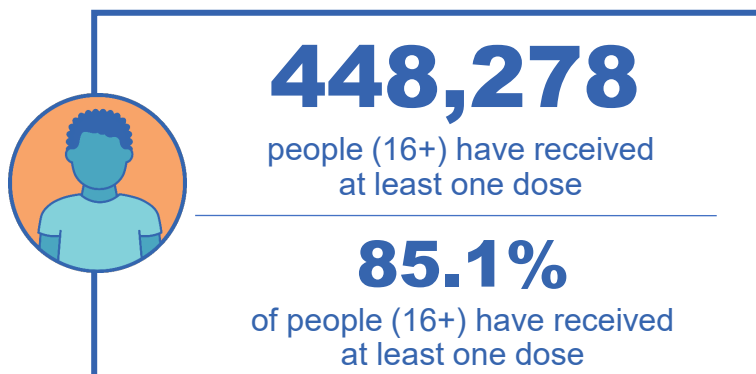
Source: Australian Immunisation Register

# Aboriginal and Torres Strait Islander peoples

## Number of people vaccinated

Data as at:  
04 Sep 2022  
Updated weekly

Australia's COVID-19  
Vaccine Program



**168** Aboriginal community controlled health services (ACCHS) sites

0#	50	26	44	9	3	19	17
<b>ACT</b>	<b>NSW</b>	<b>NT</b>	<b>QLD</b>	<b>SA</b>	<b>TAS</b>	<b>VIC</b>	<b>WA</b>

Medicare Address State##	Individuals Dose 1 % (16+)	Individuals Dose 2 % (16+)	Individuals Dose 3 % Eligible (aged 16+)	Individuals Dose 4 % Eligible (aged 30+)
Australian Capital Territory	91.8%	89.6%	64.6%	37.9%
New South Wales	87.5%	85.5%	52.3%	35.9%
Northern Territory	89.7%	85.6%	69.1%	21.9%
Queensland	82.0%	78.4%	48.6%	35.1%
South Australia	80.9%	75.5%	60.4%	35.4%
Tasmania	89.0%	86.5%	60.1%	38.9%
Victoria	90.5%	88.6%	61.8%	33.6%
Western Australia	87.0%	81.4%	65.5%	25.9%
Unknown/Other Territories	72.4%	67.3%	49.1%	20.8%
<b>Totals</b>	<b>85.1%</b>	<b>81.7%</b>	<b>55.7%</b>	<b>32.2%</b>

Source: Australian Immunisation Register

\*Identifying as Aboriginal and Torres Strait Islander is optional and the estimated population may be under reported.

\*\*Includes all Aboriginal and Torres Strait Islander peoples who have received a vaccination, not limited to those administered in an ACCHS setting.

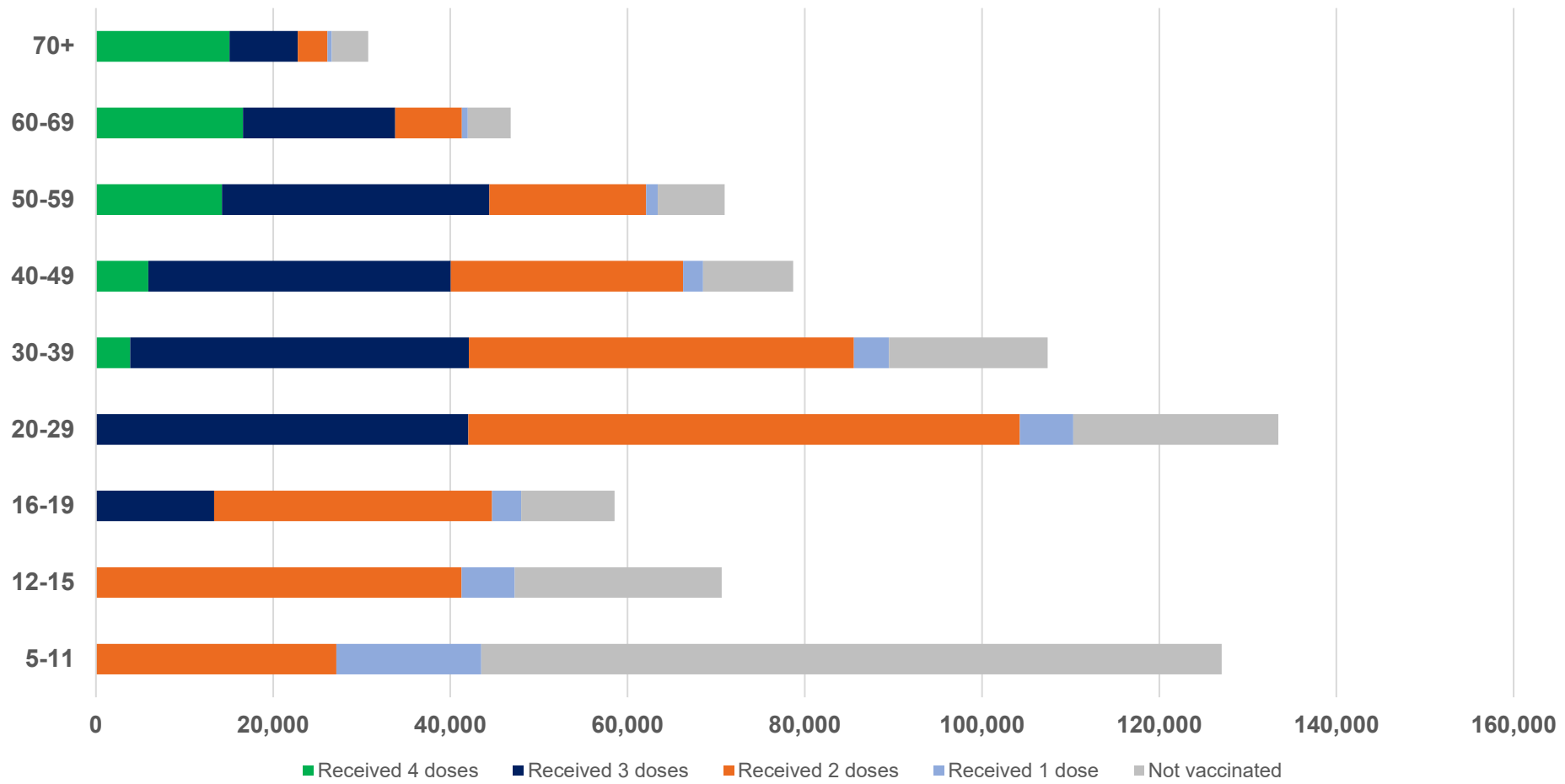
#ACCHS in the ACT are currently operating as Commonwealth Vaccine Clinics so not included to avoid double counting.

##The above table includes all identified Aboriginal and Torres Strait Islander people who are aged 16 and above by their state of residence.

Data as at:  
04 Sep 2022  
Updated weekly

# Aboriginal and Torres Strait Islander peoples

## Number of people vaccinated by age



Source: Australian Immunisation Register

# Individuals with Culturally and Linguistically Diverse (CALD) backgrounds data

Data as at:  
21 Aug 2022  
Updated weekly

Australia's COVID-19  
Vaccine Program

## People over the age of 16

CALD population *	Total number of individuals in cohort	% People with at least one dose	% People who received two doses	% of eligible people who received three or more doses
General population	20,619,959	>95.0%	>95.0%	71.6%
People born overseas	4,454,014	94.5%	93.9%	72.7%
Speaks a language other than English at home	4,110,252	94.0%	93.3%	68.7%

	General population			Born Overseas			Speaks a language other than English at home		
	% with at least one dose	% who received two doses	% of eligible people who received three or more doses	% with at least one dose	% who received two doses	% of eligible people who received three or more doses	% with at least one dose	% who received two doses	% of eligible people who received three or more doses
ACT	>95.0%	>95.0%	80.1%	>95.0%	>95.0%	78.6%	>95.0%	>95.0%	75.9%
NSW	>95.0%	>95.0%	69.4%	94.8%	94.2%	70.1%	94.1%	93.4%	65.5%
NT	91.0%	88.5%	78.8%	>95.0%	94.6%	87.8%	94.0%	93.5%	86.6%
Qld	94.6%	93.0%	64.7%	92.1%	91.3%	67.1%	92.4%	91.6%	63.7%
SA	>95.0%	94.0%	75.4%	92.6%	91.6%	74.9%	91.6%	90.5%	71.2%
Tas	>95.0%	>95.0%	74.2%	93.4%	92.8%	75.9%	93.4%	92.8%	72.0%
Vic	>95.0%	94.5%	73.8%	>95.0%	94.6%	73.0%	94.6%	94.0%	69.2%
WA	>95.0%	>95.0%	83.1%	>95.0%	94.5%	85.3%	>95.0%	94.6%	83.4%

\*Individuals with Culturally and Linguistically Diverse (CALD) backgrounds are as reported in the 2021 Census, excluding those who have since departed Australia; those born in the UK, Ireland or NZ; and Aboriginal and/or Torres Strait Islander peoples. There is overlap across CALD cohorts where individuals may have reported they had more than one CALD characteristic in the 2021 Census.

Small negative changes may appear when compared with the previous report due to perturbation, in particular for small population groups.

Source: Australian Immunisation Register linked to the Multi-Agency Data Integration Project (Census 2021 characteristics)

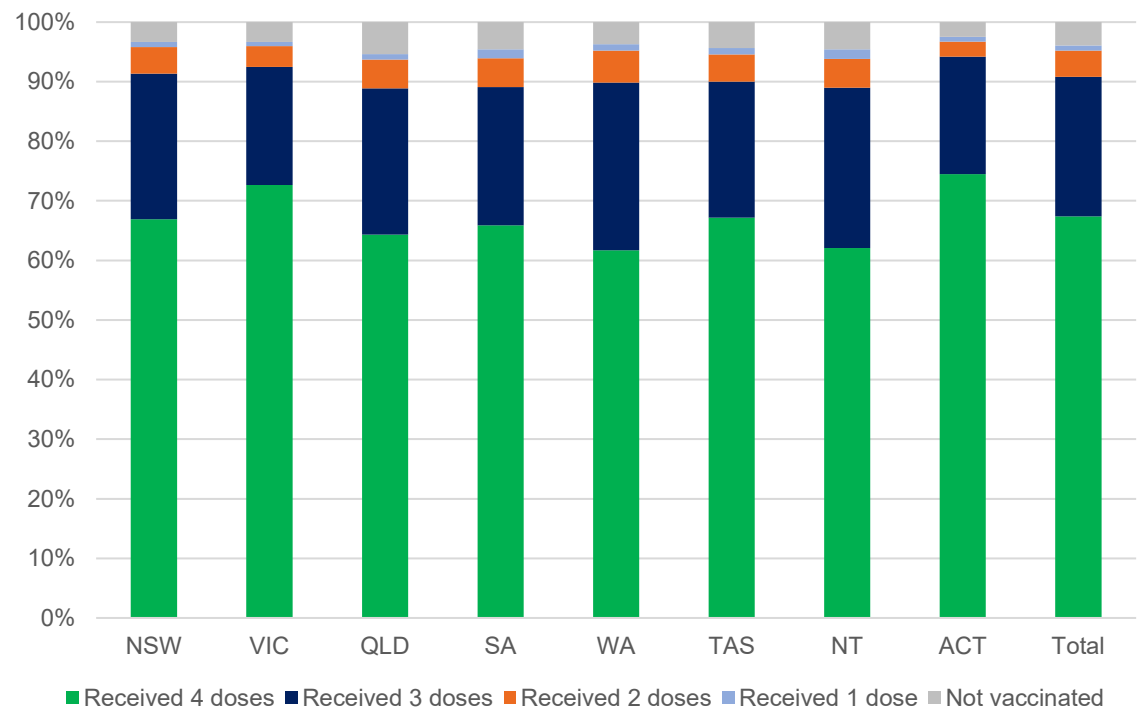
Data as at:  
08 Sep 2022  
Updated weekly

# Residential aged care vaccination rollout

Residential aged care facilities status

<b>171,912</b>	<b>170,310</b>	<b>162,457</b>	<b>120,603</b>
People with at least one dose	People with at least two doses	People with three doses	People with four doses

Aged care resident vaccinations\*



Aged care worker vaccinations

Jurisdictions	Total workers with at least one dose	Workers with at least two doses	% Workers with at least one dose	% Workers with at least two doses
NSW	78,750	78,617	99.9%	99.7%
VIC	71,258	71,235	100.0%	100.0%
QLD	48,785	48,770	100.0%	100.0%
SA	27,095	27,080	100.0%	99.9%
WA	24,880	24,870	100.0%	100.0%
TAS	7,508	7,508	100.0%	100.0%
NT	905	905	100.0%	100.0%
ACT	2,967	2,967	100.0%	100.0%
<b>Total</b>	<b>262,148</b>	<b>261,952</b>	<b>100.0%</b>	<b>99.9%</b>

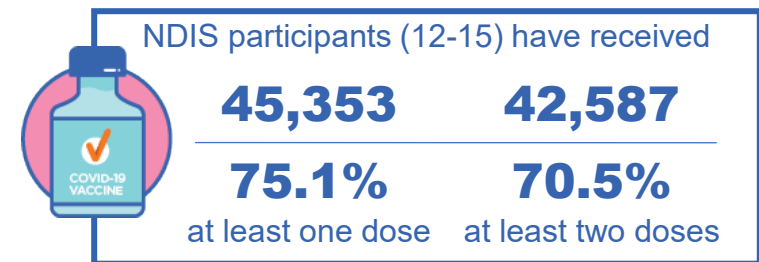
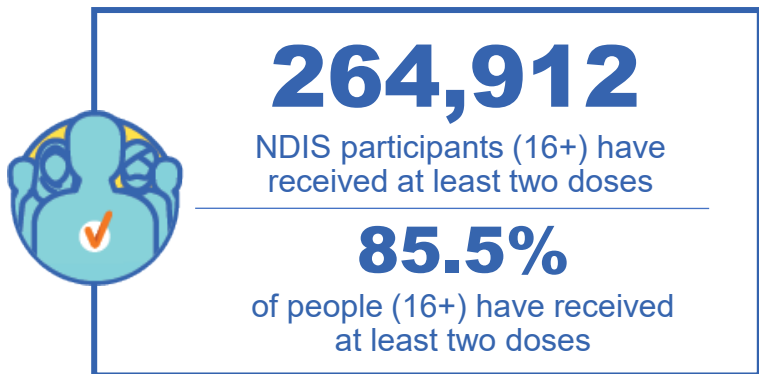
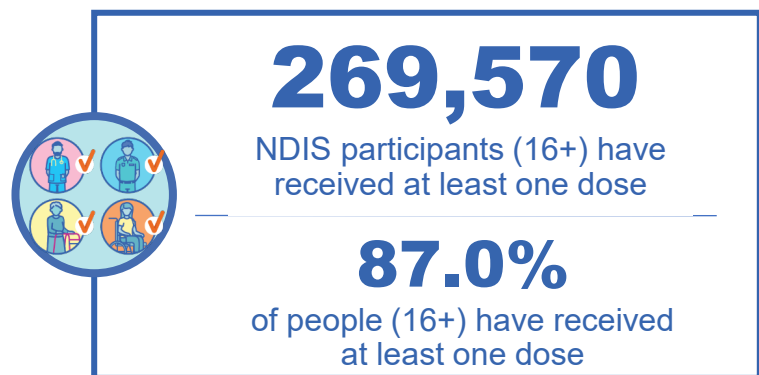
Source: Residential aged care provider self-reported COVID-19 vaccination information and matched AIR data of residents in permanent residential RACFs.

\*Self-reported status updates are provided by facilities at least once per week. Reporting is updated Monday to Friday to encompass different facility updates being made on different days.

# National Disability Insurance Scheme (NDIS) reported vaccinations

Data as at:  
08 Sep 2022  
Updated weekly

Australia's COVID-19  
Vaccine Program



## NDIS participant vaccinations

	% People aged 16+ with at least one dose	% People aged 16+ with at least two doses	% People aged 16+ with three doses	% People aged 16+ with four doses
ACT	89.4%	88.3%	83.8%	35.5%
NSW	87.5%	86.1%	75.3%	33.2%
NT	78.1%	75.8%	79.5%	25.5%
QLD	85.0%	83.4%	71.6%	27.8%
SA	84.8%	83.0%	78.5%	27.9%
TAS	87.4%	85.5%	76.4%	29.1%
VIC	88.1%	86.7%	77.7%	30.4%
WA	88.3%	86.7%	82.3%	30.8%
National	87.0%	85.5%	76.4%	30.6%

Source: Linkage between National Disability Insurance Agency data and the Australian Immunisation Register. Total NDIS participant numbers as at 30 August. Australian Immunisation Register data as at 07 September. Includes all participants regardless of residence type.

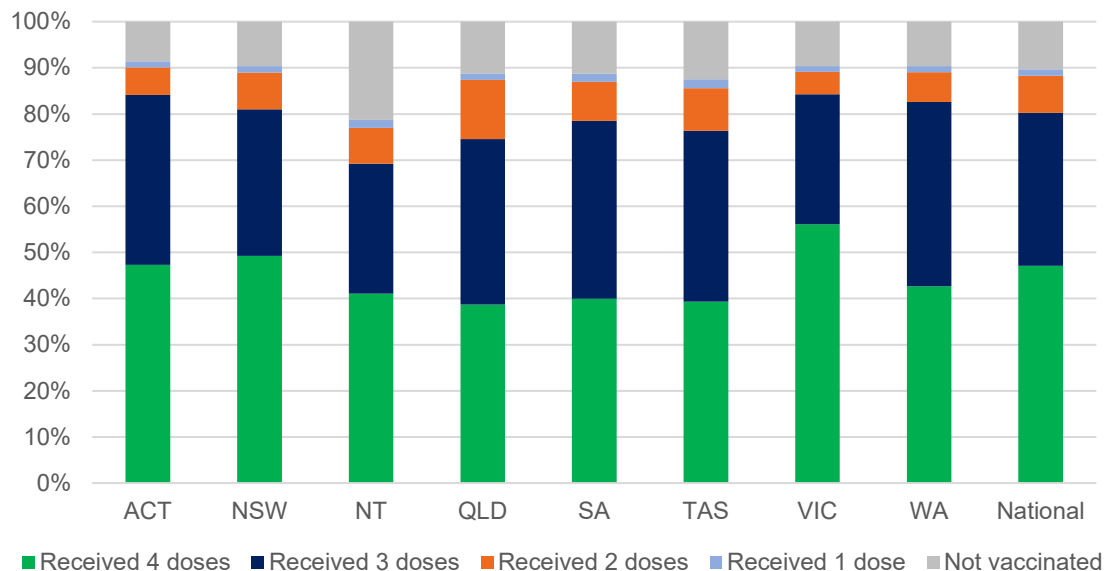
# National Disability Insurance Scheme (NDIS) reported vaccinations

Data as at:  
08 Sep 2022  
Updated weekly

Australia's COVID-19  
Vaccine Program

NATIONAL	People with at least one dose	People with at least two doses	Total number of individuals in cohort	% People with at least one dose	% People with at least two doses
NDIS participants living in disability accommodation	21,713	21,374	24,187	89.8%	88.4%

## NDIS participants in disability and aged care accommodation



Source: Linkage between National Disability Insurance Agency data and the Australian Immunisation Register. Includes participants residing in disability accommodation only.  
Source: Total NDIS participant numbers as at 30 August. Participant data as at 06 September. Australian Immunisation Register data as at 07 September. Worker data as at 07 September.

## NDIS workforce vaccinations

	NDIS workers with at least one dose	NDIS workers with at least two doses	% NDIS workers with at least one dose	% NDIS workers with at least two doses
NSW	128,335	123,995	98.5%	95.2%
VIC	118,226	115,408	97.9%	95.6%
QLD	71,607	70,819	98.0%	96.9%
WA	34,369	32,985	98.9%	94.9%
SA	35,823	34,408	98.7%	94.8%
TAS	12,481	12,157	98.5%	96.0%
ACT	12,341	12,316	99.8%	99.6%
NT	3,644	3,497	99.6%	95.5%
<b>TOTAL</b>	<b>416,826</b>	<b>405,585</b>	<b>98.3%</b>	<b>95.7%</b>

Source: the NDIS Commission has established a requirement for registered NDIS providers who provide intensive disability support services to report on the vaccination status of workers they employ, or otherwise engage, to deliver NDIS-funded supports and services, and who are required to be vaccinated in accordance with in-force state and territory public health orders. The statistics reflect data reported to the NDIS Commission by registered NDIS providers and should be considered indicative and subject to change

Note: Some registered NDIS providers are yet to report on the vaccination status of their workforce. The NDIS Commission is working with those providers around reporting requirements. Remaining workers not included include those exempt from vaccination requirements, workers whose vaccination status is not yet verified by the provider (such as workers on leave) and provider reporting anomalies.