



Australian Government

Department of Health and Aged Care

COVID-19 Vaccine Roll-out

07 September 2022

Data as at:
06 Sep 2022

Total vaccine doses



63,250,537 total vaccine doses administered nationally as at 06 September

+15,629 recorded in the last 24 hours



20,212,256

people (16+) have received at least one dose (>95%)

19,863,661

people (16+) have received at least two doses (>95%)



14,222,128

people (16+) have received three doses



4,749,084

people (16+) have received four doses

NSW
19,663,291
(+4,869 daily increase)

VIC
16,521,825
(+3,768 daily increase)

QLD
11,989,052
(+2,681 daily increase)

WA
6,917,175
(+1,636 daily increase)

TAS
1,443,223
(+416 daily increase)

SA
4,418,617
(+1,078 daily increase)

ACT
1,682,360
(+832 daily increase)

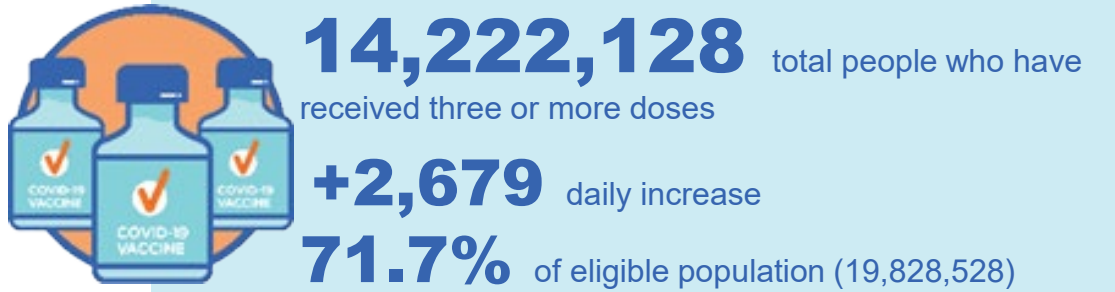
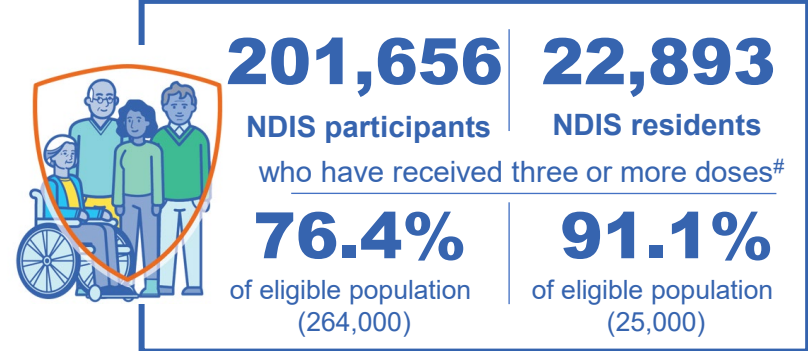
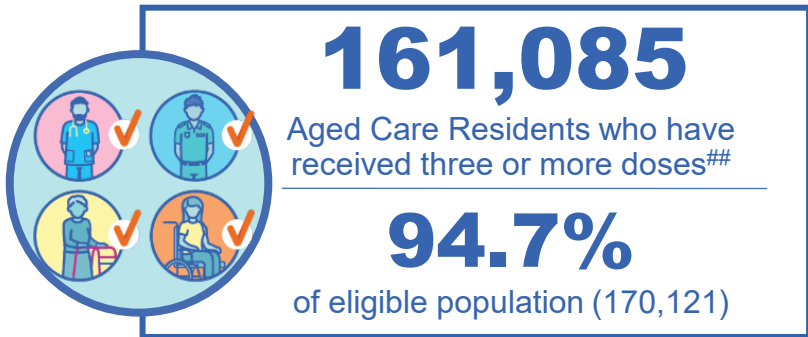
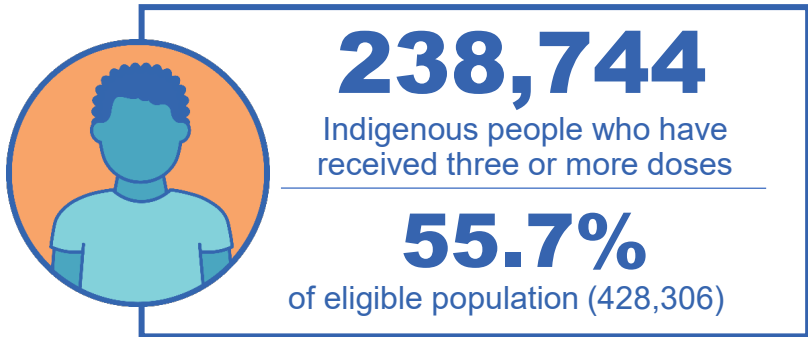
NT
614,994
(+349 daily increase)

*Administration state breakdown indicates state in which a vaccine was administered

Source: Australian Immunisation Register

Third Doses

Data as at:
06 Sep 2022



	Number of People	Daily Increase	% of Eligible
NSW	4,354,154	934	69.6%
VIC	3,772,967	420	73.9%
QLD	2,475,828	316	64.8%
WA	1,724,617	143	83.2%
SA	1,021,944	174	75.6%
TAS	325,018	50	74.3%
ACT	279,391	44	80.2%
NT	132,668	32	79.0%

135,541


doses administered to persons residing in other territories or with missing residential information

*People may belong to multiple groups and could be represented in the above breakdowns multiple times.
NDIS participants data as at 04 September 2022. ## Aged Care Residents data as at 01 September 2022.

Source: Australian Immunisation Register

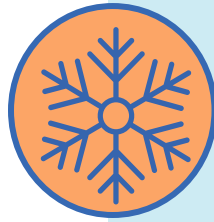
Data as at:
06 Sep 2022

Fourth Doses



115,855
Aged Care Residents who have received four or more doses#

81.2%
of eligible population (142,722)



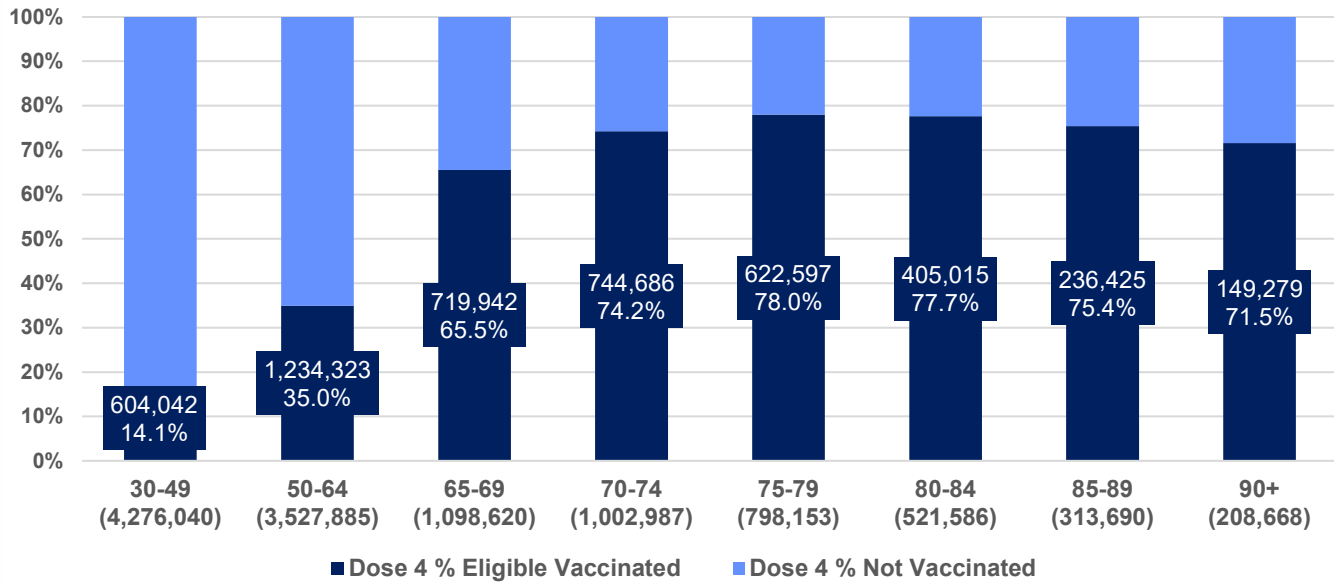
4,749,084
+10,774
40.1%
2,877,944
73.0%

total people (16+) who have received four doses
daily increase (16+)

of eligible population (30+) (11,747,629)

total people (65+) who have received four doses
of eligible population (65+) (3,943,704)

% Individuals eligible vaccinated by current age



	Number of People 16+	Daily Increase
ACT	98,986	331
NSW	1,524,909	3,213
NT	23,729	168
QLD	918,882	1,783
SA	371,783	744
TAS	128,363	319
VIC	1,174,563	2,719
WA	480,354	1,267

27,515 doses administered to persons residing in other territories or with missing residential information

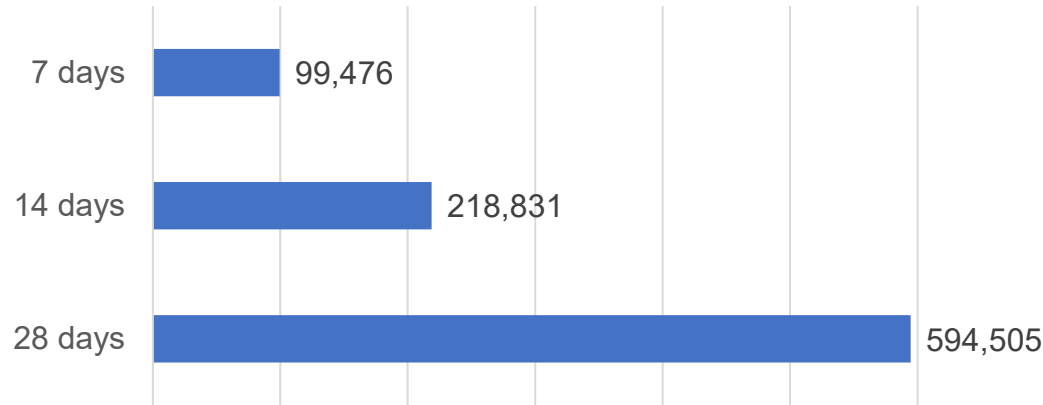
*People become eligible for a fourth dose three months after their third dose. Individuals may belong to multiple groups and could be represented in the above multiple times.
#Aged Care Residents data as at 05 September 2022.

Source: Australian Immunisation Register

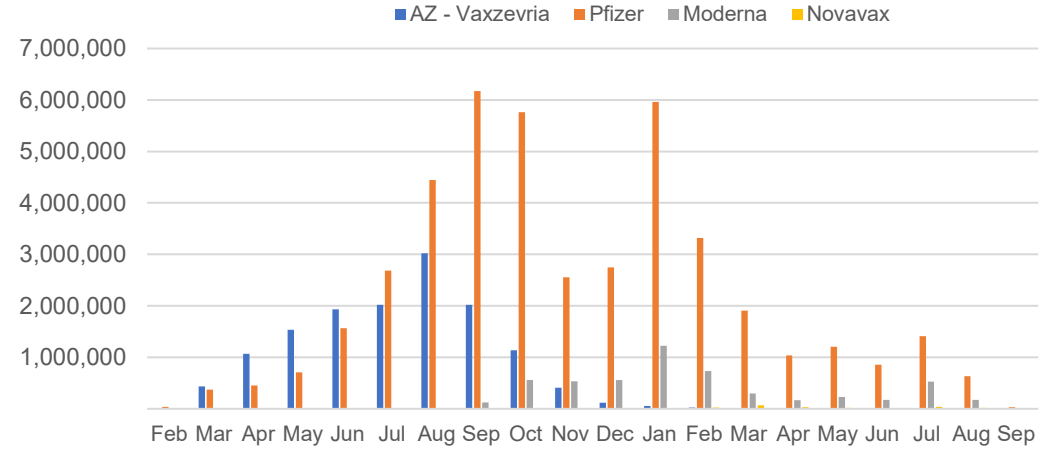
Vaccine milestone charts

Data as at:
04 Sep 2022
Updated weekly

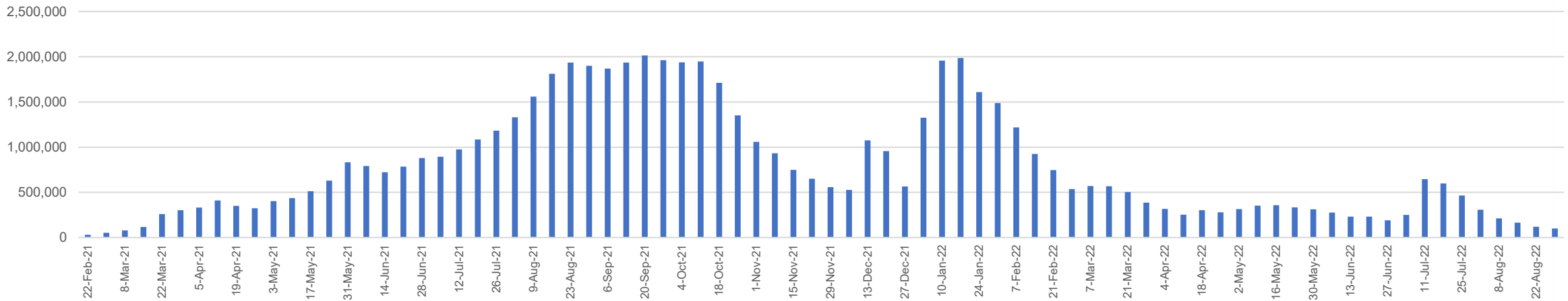
Doses Reported



Doses by administration month and vaccine type



Doses Administered by Week



*Sourced from the Australian Immunisation Register.

Data as at:
04 Sep 2022
Updated weekly

Doses by age and jurisdiction

	AUS	ACT	NSW	NT	QLD	SA	TAS	VIC	WA
5 to 11 - dose 1	1,178,247	31,428	353,006	12,684	202,895	82,308	27,978	319,978	137,410
5 to 11 - dose 2	923,632	27,691	284,966	8,817	153,238	65,308	23,256	250,774	104,300
5 to 11 - population	2,276,638	39,789	716,460	24,750	478,731	148,816	45,033	578,499	244,154
5 to 11 % with dose 1	51.75%	78.99%	49.27%	51.25%	42.38%	55.31%	62.13%	55.31%	56.28%
5 to 11 % with dose 2	40.57%	69.59%	39.77%	35.62%	32.01%	43.89%	51.64%	43.35%	42.72%
12 to 15 - dose 1	1,039,606	20,146	319,243	10,548	202,876	67,481	22,474	271,275	114,420
12 to 15 - dose 2	981,474	19,575	304,715	9,477	188,924	63,643	21,348	258,800	105,741
12 to 15 - population	1,243,990	19,693	390,330	13,060	270,146	82,747	26,308	308,611	132,869
12 to 15 % with dose 1	83.57%	>99%	81.79%	80.77%	75.10%	81.55%	85.43%	87.90%	86.11%
12 to 15 % with dose 2	78.90%	>99%	78.07%	72.57%	69.93%	76.91%	81.15%	83.86%	79.58%
16 and over - dose 1	20,209,451	354,897	6,367,410	172,884	3,891,974	1,384,942	447,257	5,195,265	2,109,006
16 and over - dose 2	19,861,134	348,869	6,264,293	168,184	3,827,402	1,355,141	438,268	5,113,230	2,077,084
16 and over - dose 3	14,217,046	279,304	4,352,218	132,609	2,475,056	1,021,569	324,946	3,771,975	1,724,335
16 and over - population	20,619,959	344,037	6,565,651	190,571	4,112,707	1,440,400	440,172	5,407,574	2,114,978
16 and over % with dose 1	98.01%	>99%	96.98%	90.72%	94.63%	96.15%	>99%	96.07%	>99%
16 and over % with dose 2	96.32%	>99%	95.41%	88.25%	93.06%	94.08%	>99%	94.56%	98.21%
16 and over % with dose 3	68.95%	81.18%	66.29%	69.59%	60.18%	70.92%	73.82%	69.75%	81.53%
30 and over - dose 1	15,818,572	274,638	5,011,230	127,875	3,043,712	1,102,806	355,631	4,060,969	1,652,637
30 and over - dose 2	15,586,311	270,604	4,940,764	125,249	3,001,757	1,084,041	349,855	4,004,996	1,631,437
30 and over - dose 3	12,047,066	229,050	3,724,046	104,184	2,157,306	874,930	280,904	3,155,899	1,420,024
30 and over - dose 4	4,696,196	97,344	1,506,837	23,048	910,585	368,570	127,040	1,160,473	475,481
30 and over - population	15,805,337	258,148	5,042,108	140,343	3,148,826	1,126,262	349,703	4,096,873	1,639,833
30 and over % with dose 1	>99%	>99%	>99%	91.12%	96.66%	97.92%	>99%	>99%	>99%
30 and over % with dose 2	98.61%	>99%	97.99%	89.24%	95.33%	96.25%	>99%	97.76%	>99%
30 and over % with dose 3	76.22%	88.73%	73.86%	74.24%	68.51%	77.68%	80.33%	77.03%	86.60%
30 and over % with dose 4	29.71%	37.71%	29.89%	16.42%	28.92%	32.73%	36.33%	28.33%	29.00%
65 and over - dose 1	4,486,880	65,643	1,453,318	20,733	870,161	358,498	117,796	1,118,940	438,044
65 and over - dose 2	4,426,364	64,613	1,433,775	20,391	860,012	353,964	116,483	1,103,131	433,106
65 and over - dose 3	4,005,058	60,376	1,284,914	18,211	778,787	326,426	108,067	990,620	405,063
65 and over - dose 4	2,870,479	48,181	916,628	10,789	574,228	241,288	81,664	692,206	287,212
65 and over - population	4,192,882	57,745	1,366,640	20,994	831,881	338,903	110,799	1,057,498	407,530
65 and over % with dose 1	>99%	>99%	>99%	98.76%	>99%	>99%	>99%	>99%	>99%
65 and over % with dose 2	>99%	>99%	>99%	97.13%	>99%	>99%	>99%	>99%	>99%
65 and over % with dose 3	95.52%	>99%	94.02%	86.74%	93.62%	96.32%	97.53%	93.68%	>99%
65 and over % with dose 4	68.46%	83.44%	67.07%	51.39%	69.03%	71.20%	73.70%	65.46%	70.48%

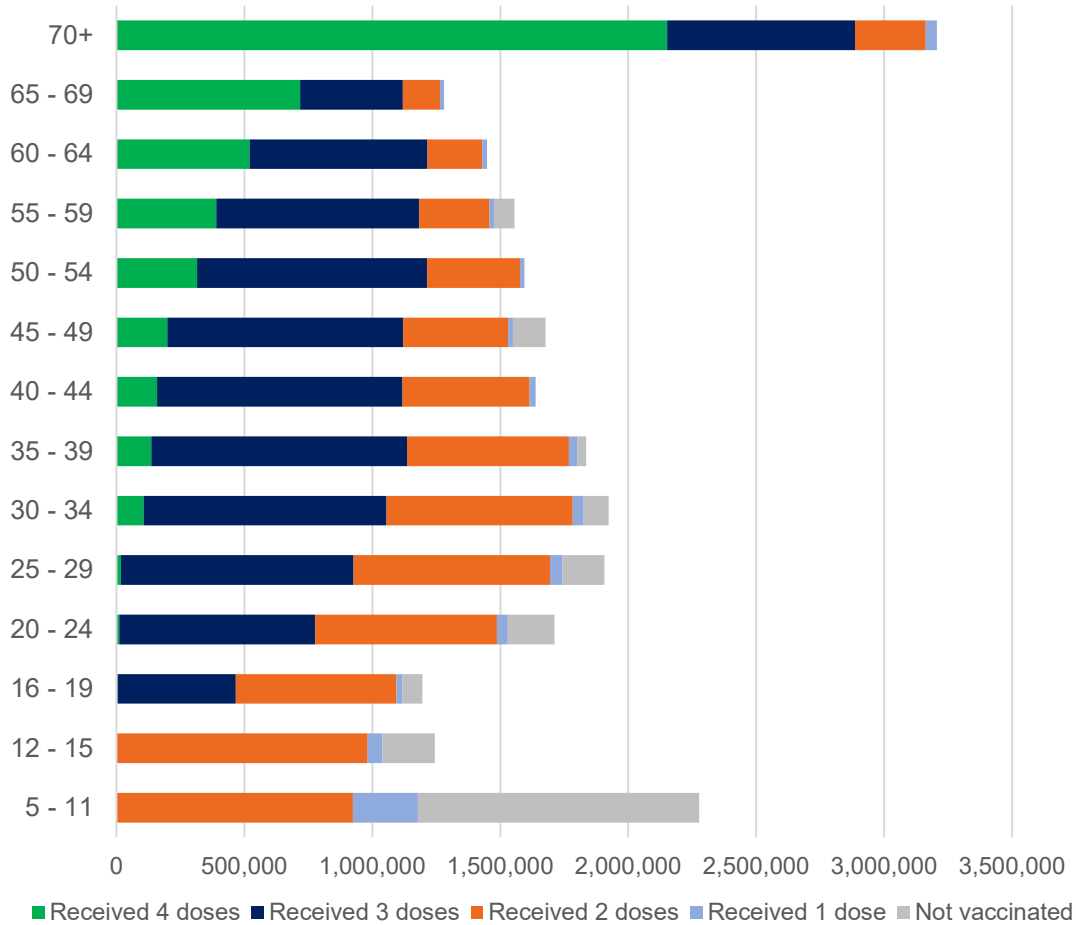
*National population will not equal sum of listed jurisdictions due to a small number of people counted in national population residing in some 'other' territories. Sum of state doses will not add to national total as some records are unable to be geocoded to a State or Territory.

Doses sourced from Australian Immunisation Register, population from ABS ERP June 2020

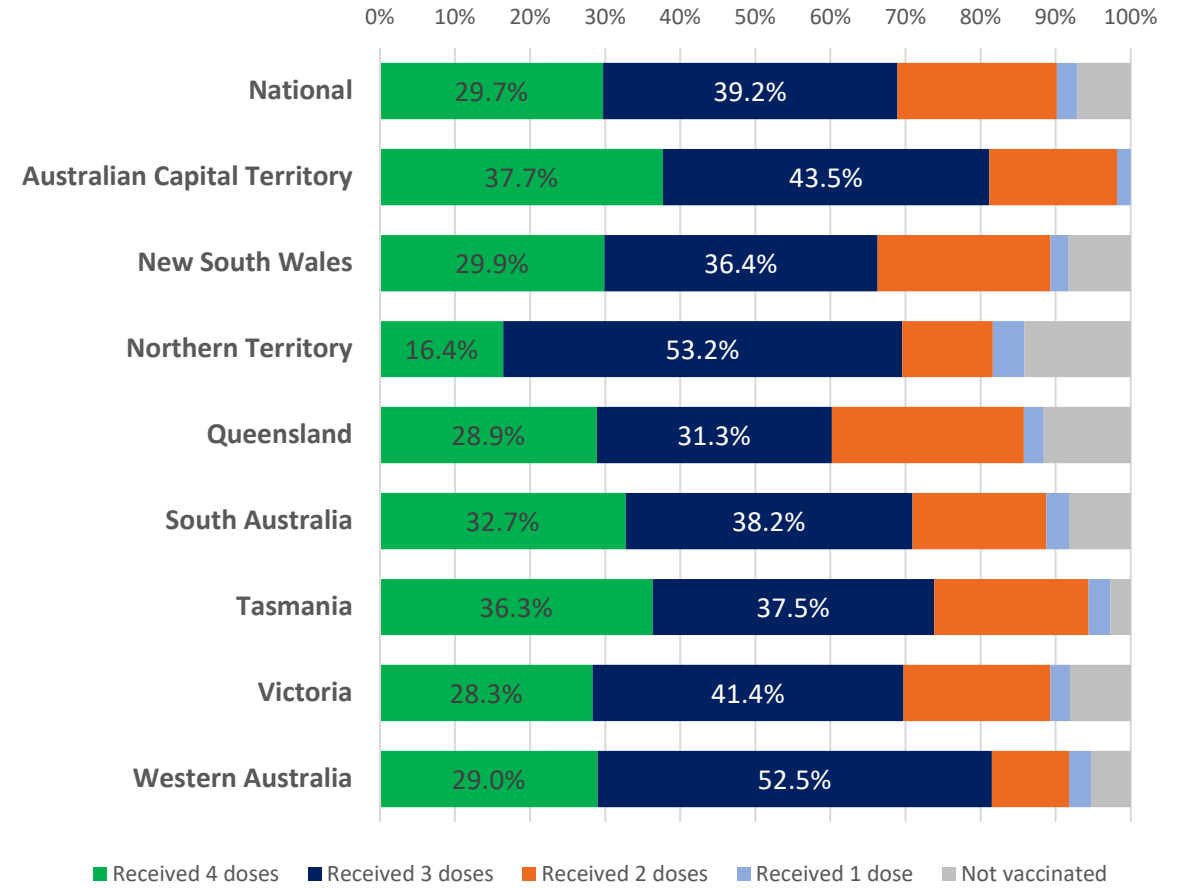
Vaccinations by age and location

Data as at:
04 Sep 2022
Updated weekly

Number of people vaccinated by age

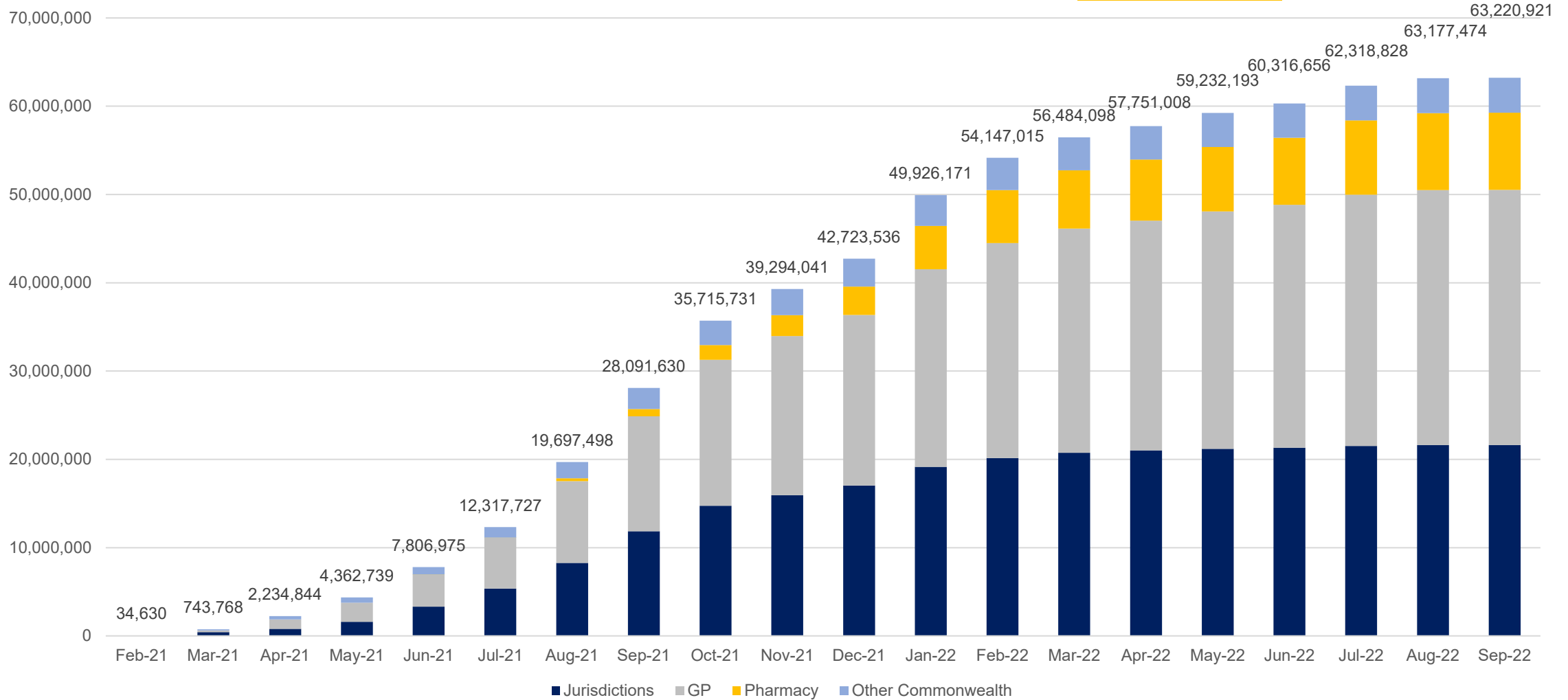


Individuals vaccinated by residential location



Data as at:
04 Sep 2022
Updated weekly

Cumulative doses administered by channel



Source: Australian Immunisation Register

Commonwealth primary care

Data as at:
04 Sep 2022
Updated weekly

Australia's COVID-19
Vaccine Program



Primary care vaccine administration sites

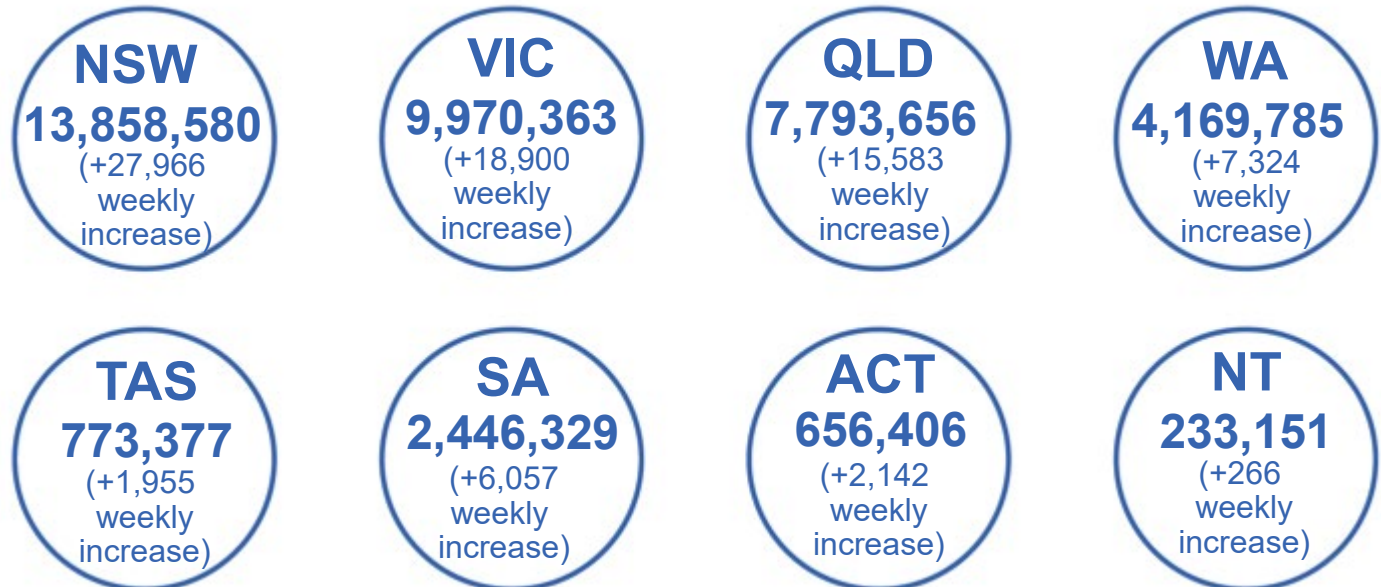
5,496	115	168	3,562
GPs	CVCs	ACCHS	Pharmacies



40,271,196 total vaccine doses administered
primary care settings as at 04 September
+86,387 recorded in the last week

Primary care vaccinations by provider type

	Doses administered	7 day increase
General Practice* includes other Commonwealth	31,533,917	51,613
Pharmacy	8,737,279	34,774



369,549

doses administered to persons residing in other territories or with missing residential information

*General practice includes Commonwealth Vaccination Clinics, Aboriginal Community Health Centres, Royal Flying Doctor Service and other Commonwealth vaccination facilities

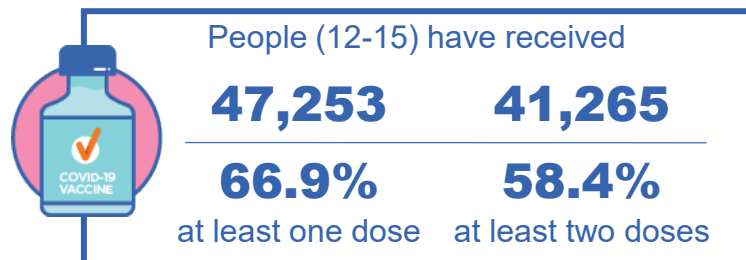
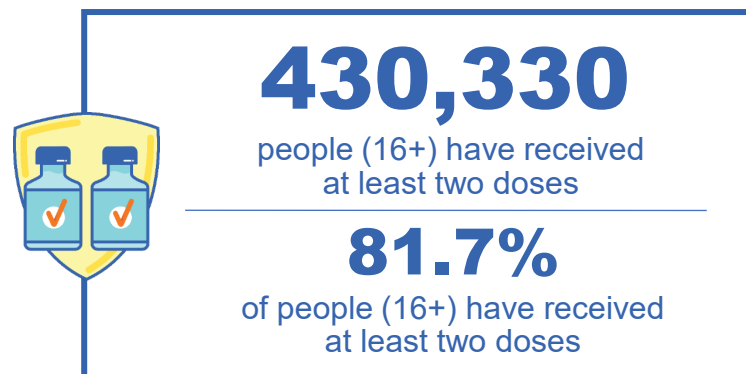
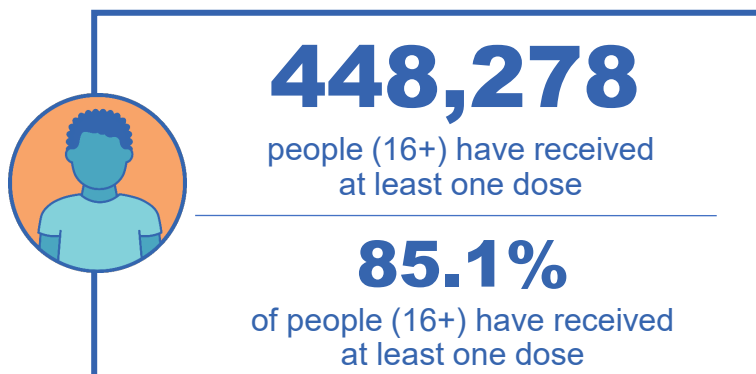
Source: Australian Immunisation Register

Aboriginal and Torres Strait Islander peoples

Number of people vaccinated

Data as at:
04 Sep 2022
Updated weekly

Australia's COVID-19
Vaccine Program



168 Aboriginal community controlled health services (ACCHS) sites

0#	50	26	44	9	3	19	17
ACT	NSW	NT	QLD	SA	TAS	VIC	WA

Medicare Address State##	Individuals Dose 1 % (16+)	Individuals Dose 2 % (16+)	Individuals Dose 3 % Eligible (aged 16+)	Individuals Dose 4 % Eligible (aged 30+)
Australian Capital Territory	91.8%	89.6%	64.6%	37.9%
New South Wales	87.5%	85.5%	52.3%	35.9%
Northern Territory	89.7%	85.6%	69.1%	21.9%
Queensland	82.0%	78.4%	48.6%	35.1%
South Australia	80.9%	75.5%	60.4%	35.4%
Tasmania	89.0%	86.5%	60.1%	38.9%
Victoria	90.5%	88.6%	61.8%	33.6%
Western Australia	87.0%	81.4%	65.5%	25.9%
Unknown/Other Territories	72.4%	67.3%	49.1%	20.8%
Totals	85.1%	81.7%	55.7%	32.2%

Source: Australian Immunisation Register

*Identifying as Aboriginal and Torres Strait Islander is optional and the estimated population may be under reported.

**Includes all Aboriginal and Torres Strait Islander peoples who have received a vaccination, not limited to those administered in an ACCHS setting.

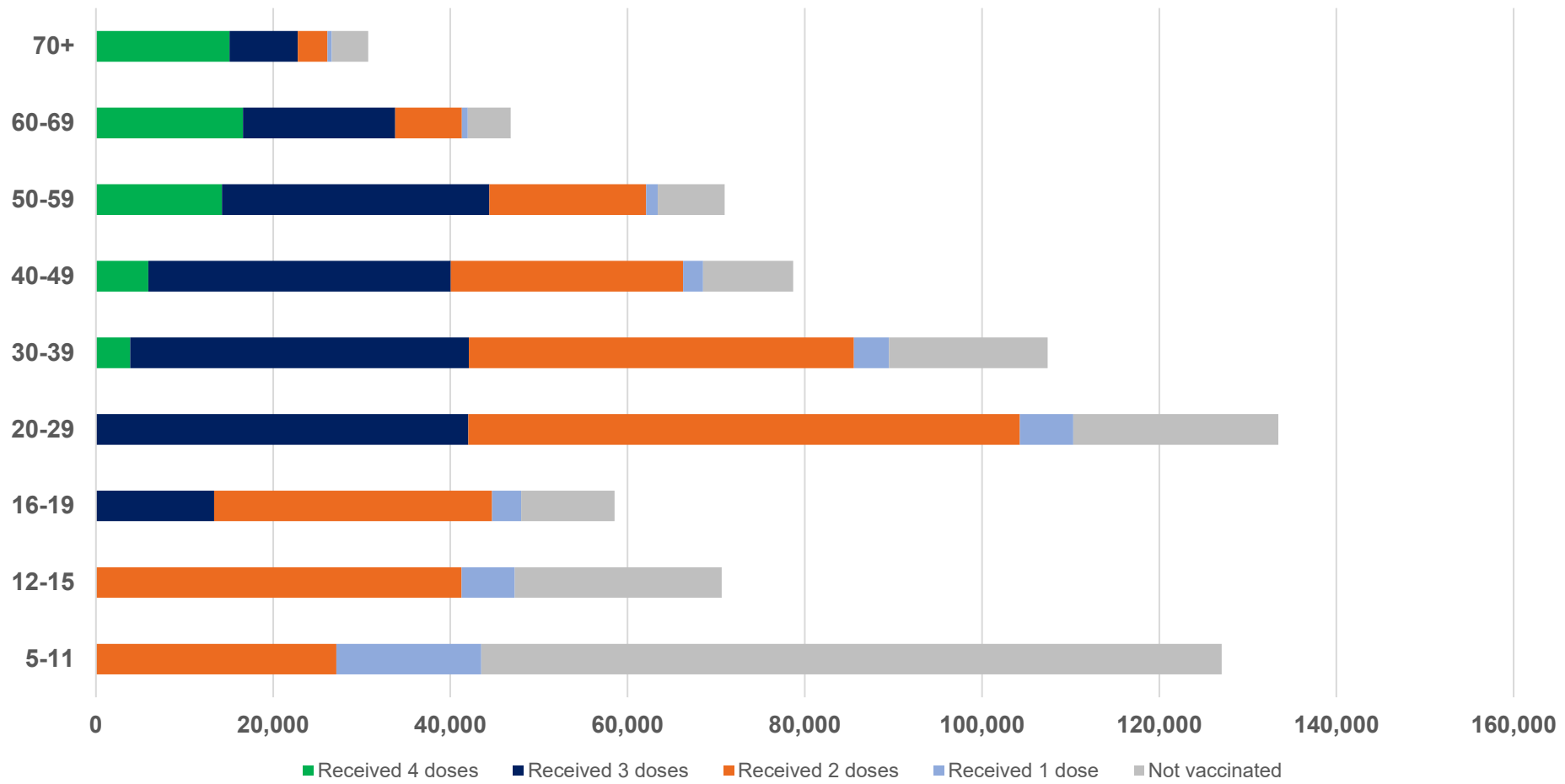
#ACCHS in the ACT are currently operating as Commonwealth Vaccine Clinics so not included to avoid double counting.

##The above table includes all identified Aboriginal and Torres Strait Islander people who are aged 16 and above by their state of residence.

Data as at:
04 Sep 2022
Updated weekly

Aboriginal and Torres Strait Islander peoples

Number of people vaccinated by age



Source: Australian Immunisation Register

Individuals with Culturally and Linguistically Diverse (CALD) backgrounds data

Data as at:
21 Aug 2022
Updated weekly

Australia's COVID-19
Vaccine Program

People over the age of 16

CALD population *	Total number of individuals in cohort	% People with at least one dose	% People who received two doses	% of eligible people who received three or more doses
General population	20,619,959	>95.0%	>95.0%	71.6%
People born overseas	4,454,014	94.5%	93.9%	72.7%
Speaks a language other than English at home	4,110,252	94.0%	93.3%	68.7%

	General population			Born Overseas			Speaks a language other than English at home		
	% with at least one dose	% who received two doses	% of eligible people who received three or more doses	% with at least one dose	% who received two doses	% of eligible people who received three or more doses	% with at least one dose	% who received two doses	% of eligible people who received three or more doses
ACT	>95.0%	>95.0%	80.1%	>95.0%	>95.0%	78.6%	>95.0%	>95.0%	75.9%
NSW	>95.0%	>95.0%	69.4%	94.8%	94.2%	70.1%	94.1%	93.4%	65.5%
NT	91.0%	88.5%	78.8%	>95.0%	94.6%	87.8%	94.0%	93.5%	86.6%
Qld	94.6%	93.0%	64.7%	92.1%	91.3%	67.1%	92.4%	91.6%	63.7%
SA	>95.0%	94.0%	75.4%	92.6%	91.6%	74.9%	91.6%	90.5%	71.2%
Tas	>95.0%	>95.0%	74.2%	93.4%	92.8%	75.9%	93.4%	92.8%	72.0%
Vic	>95.0%	94.5%	73.8%	>95.0%	94.6%	73.0%	94.6%	94.0%	69.2%
WA	>95.0%	>95.0%	83.1%	>95.0%	94.5%	85.3%	>95.0%	94.6%	83.4%

*Individuals with Culturally and Linguistically Diverse (CALD) backgrounds are as reported in the 2021 Census, excluding those who have since departed Australia; those born in the UK, Ireland or NZ; and Aboriginal and/or Torres Strait Islander peoples. There is overlap across CALD cohorts where individuals may have reported they had more than one CALD characteristic in the 2021 Census.

Small negative changes may appear when compared with the previous report due to perturbation, in particular for small population groups.

Source: Australian Immunisation Register linked to the Multi-Agency Data Integration Project (Census 2021 characteristics)

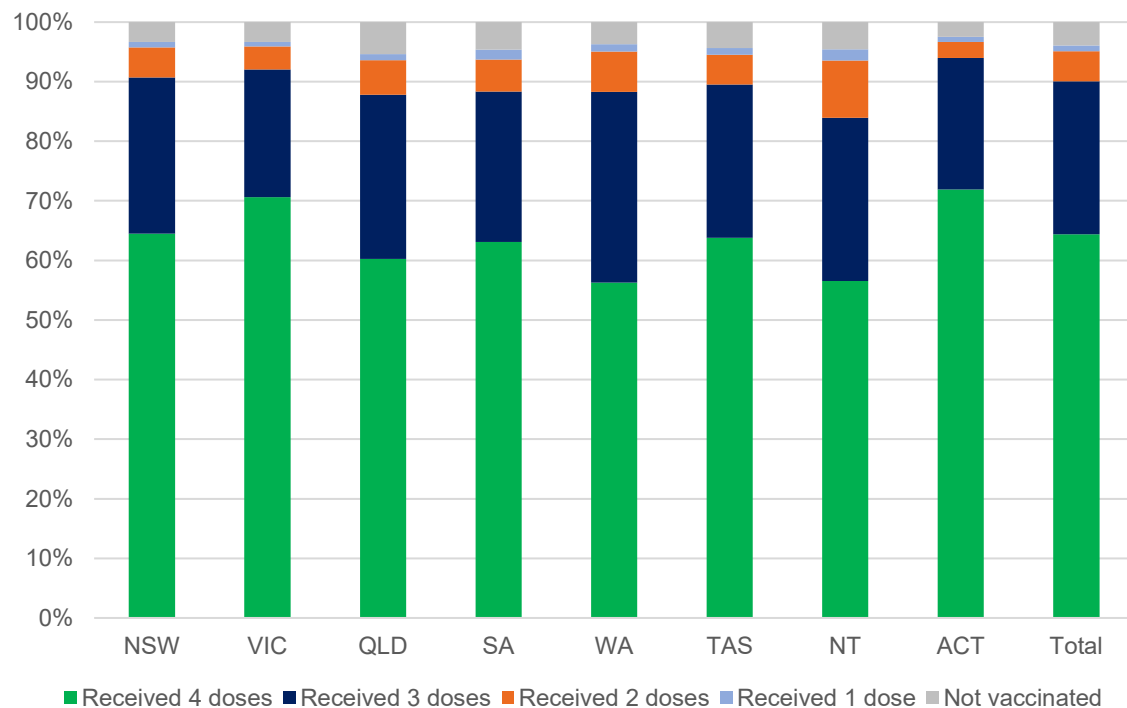
Residential aged care vaccination rollout

Residential aged care facilities status

171,898	170,121	161,085	115,241
People with at least one dose	People with at least two doses	People with three doses	People with four doses

Data as at:
01 Sep 2022
Updated weekly

Aged care resident vaccinations*



Aged care worker vaccinations

Jurisdictions	Total workers with at least one dose	Workers with at least two doses	% Workers with at least one dose	% Workers with at least two doses
NSW	78,699	78,567	99.9%	99.7%
VIC	71,575	71,571	100.0%	100.0%
QLD	48,970	48,959	100.0%	100.0%
SA	27,009	26,995	100.0%	99.9%
WA	24,880	24,874	100.0%	100.0%
TAS	7,510	7,510	100.0%	100.0%
NT	902	902	100.0%	100.0%
ACT	2,950	2,950	100.0%	100.0%
Total	262,495	262,328	100.0%	99.9%

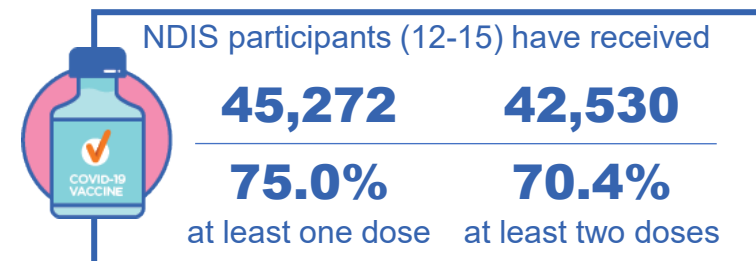
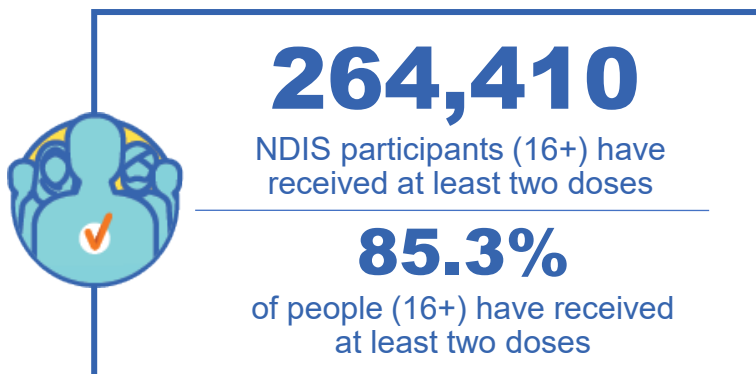
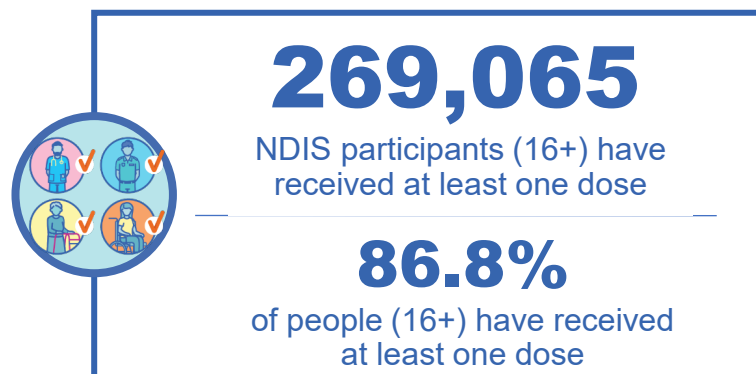
Source: Residential aged care provider self-reported COVID-19 vaccination information and matched AIR data of residents in permanent residential RACFs.

*Self-reported status updates are provided by facilities at least once per week. Reporting is updated Monday to Friday to encompass different facility updates being made on different days.

National Disability Insurance Scheme (NDIS) reported vaccinations

Data as at:
01 Sep 2022
Updated weekly

Australia's COVID-19
Vaccine Program



NDIS participant vaccinations

	% People aged 16+ with at least one dose	% People aged 16+ with at least two doses	% People aged 16+ with three doses	% People aged 16+ with four doses
ACT	89.2%	88.0%	83.8%	34.7%
NSW	87.4%	86.0%	75.3%	32.8%
NT	78.0%	75.6%	79.5%	25.1%
QLD	84.9%	83.3%	71.6%	27.5%
SA	84.6%	82.8%	78.5%	27.5%
TAS	87.2%	85.3%	76.4%	28.8%
VIC	88.0%	86.6%	77.7%	30.0%
WA	88.2%	86.5%	82.3%	30.3%
National	86.8%	85.3%	76.3%	30.1%

Source: Linkage between National Disability Insurance Agency data and the Australian Immunisation Register. Total NDIS participant numbers as at 30 August. Australian Immunisation Register data as at 31 August. Includes all participants regardless of residence type.

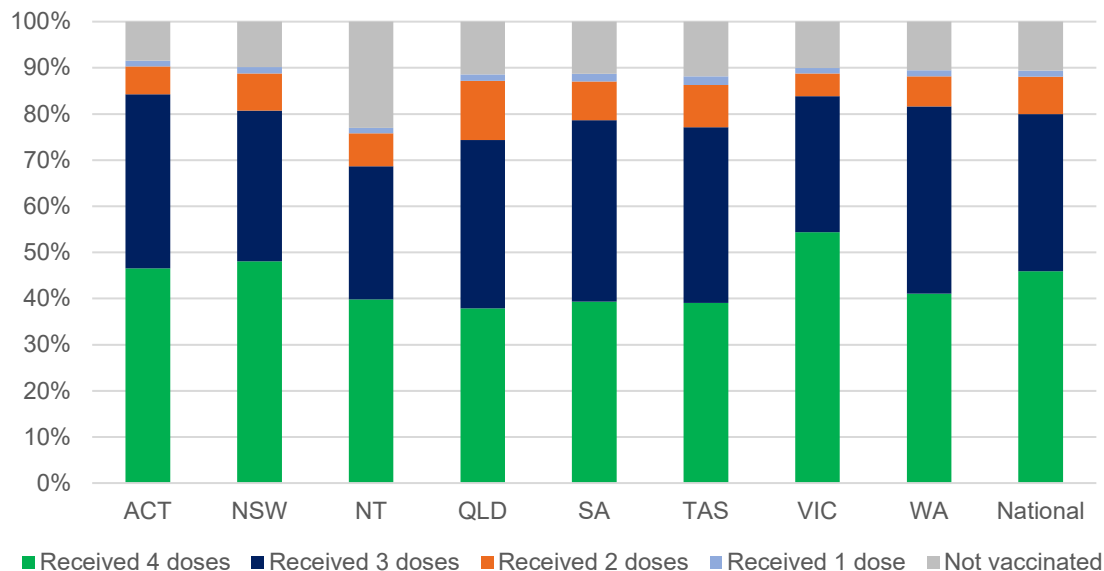
National Disability Insurance Scheme (NDIS) reported vaccinations

Data as at:
01 Sep 2022
Updated weekly

Australia's COVID-19
Vaccine Program

NATIONAL	People with at least one dose	People with at least two doses	Total number of individuals in cohort	% People with at least one dose	% People with at least two doses
NDIS participants living in disability accommodation	21,609	21,276	24,187	89.3%	88.0%

NDIS participants in disability and aged care accommodation



Source: Linkage between National Disability Insurance Agency data and the Australian Immunisation Register. Includes participants residing in disability accommodation only.
Source: Total NDIS participant numbers as at 30 August. Participant data as at 30 August. Australian Immunisation Register data as at 31 August. Worker data as at 01 September.

NDIS workforce vaccinations

	NDIS workers with at least one dose	NDIS workers with at least two doses	% NDIS workers with at least one dose	% NDIS workers with at least two doses
NSW	128,321	124,060	98.4%	95.2%
VIC	118,229	115,365	97.9%	95.5%
QLD	70,742	69,941	96.8%	95.7%
WA	34,357	32,979	98.9%	94.9%
SA	35,869	34,409	98.7%	94.7%
TAS	12,481	12,156	98.5%	96.0%
ACT	12,342	12,317	99.8%	99.6%
NT	3,644	3,497	99.6%	95.5%
TOTAL	415,985	404,724	98.1%	95.5%

Source: the NDIS Commission has established a requirement for registered NDIS providers who provide intensive disability support services to report on the vaccination status of workers they employ, or otherwise engage, to deliver NDIS-funded supports and services, and who are required to be vaccinated in accordance with in-force state and territory public health orders. The statistics reflect data reported to the NDIS Commission by registered NDIS providers and should be considered indicative and subject to change

Note: Some registered NDIS providers are yet to report on the vaccination status of their workforce. The NDIS Commission is working with those providers around reporting requirements. Remaining workers not included include those exempt from vaccination requirements, workers whose vaccination status is not yet verified by the provider (such as workers on leave) and provider reporting anomalies.