



Australian Government

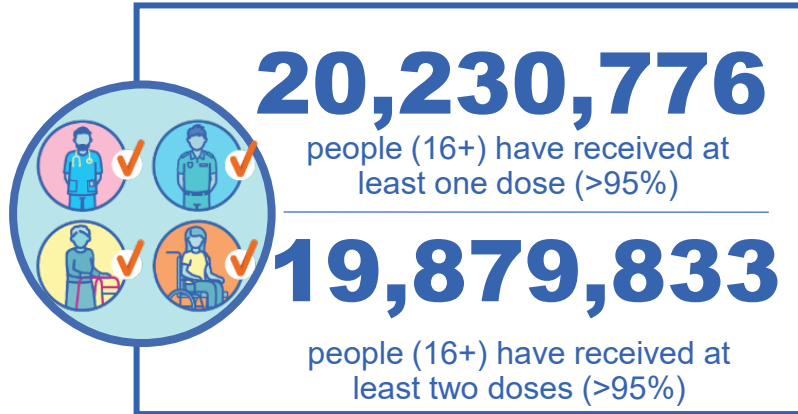
Department of Health and Aged Care

COVID-19 Vaccine Roll-out

21 September 2022

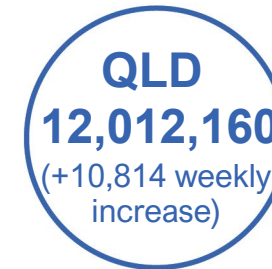
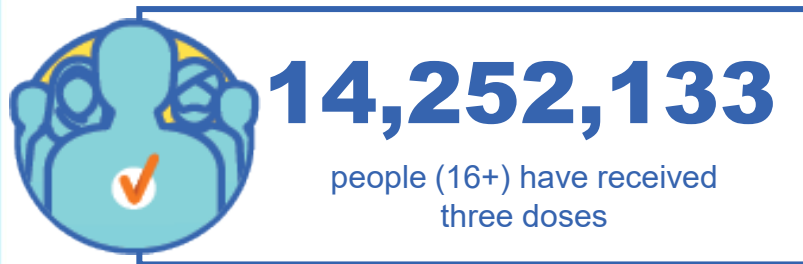
Data as at:
20 Sep 2022
Updated weekly

Total vaccine doses



63,401,199 total vaccine doses administered

+71,854 weekly increase



*Administration state breakdown indicates state in which a vaccine was administered

Source: Australian Immunisation Register

Third Doses

Data as at:
20 Sep 2022##
Updated weekly



240,359

Indigenous people who have received three or more doses

56.0%

of eligible population (429,456)



152,433

Aged Care Residents who have received three or more doses##

95.8%

of eligible population (159,051)



202,587

NDIS participants

who have received three or more doses#

76.4%

of eligible population (265,000)

23,106

NDIS residents

who have received three or more doses#

91.2%

of eligible population (25,000)



14,252,133

total people who have received three or more doses

+15,067

weekly increase

71.8%

of eligible population (19,847,615)

	Number of People	Weekly Increase	% of Eligible
ACT	279,757	162	80.3%
NSW	4,365,848	6,314	69.8%
NT	132,546	<10	79.2%
QLD	2,480,803	2,692	64.9%
SA	1,024,118	1,024	75.7%
TAS	325,590	282	74.4%
VIC	3,778,937	2,997	73.9%
WA	1,726,712	1,050	83.2%

137,822

doses administered to persons residing in other territories or with missing residential information


*People may belong to multiple groups and could be represented in the above breakdowns multiple times.
#NDIS participants data as at 18 September 2022. ##Aged Care Residents data as at 22 September 2022.

Source: Australian Immunisation Register

Fourth Doses

Data as at:
20 Sep 2022#
Updated weekly

Australia's COVID-19
Vaccine Program



118,931
Aged Care Residents who have received four or more doses#

84.5%
of eligible population (140,698)



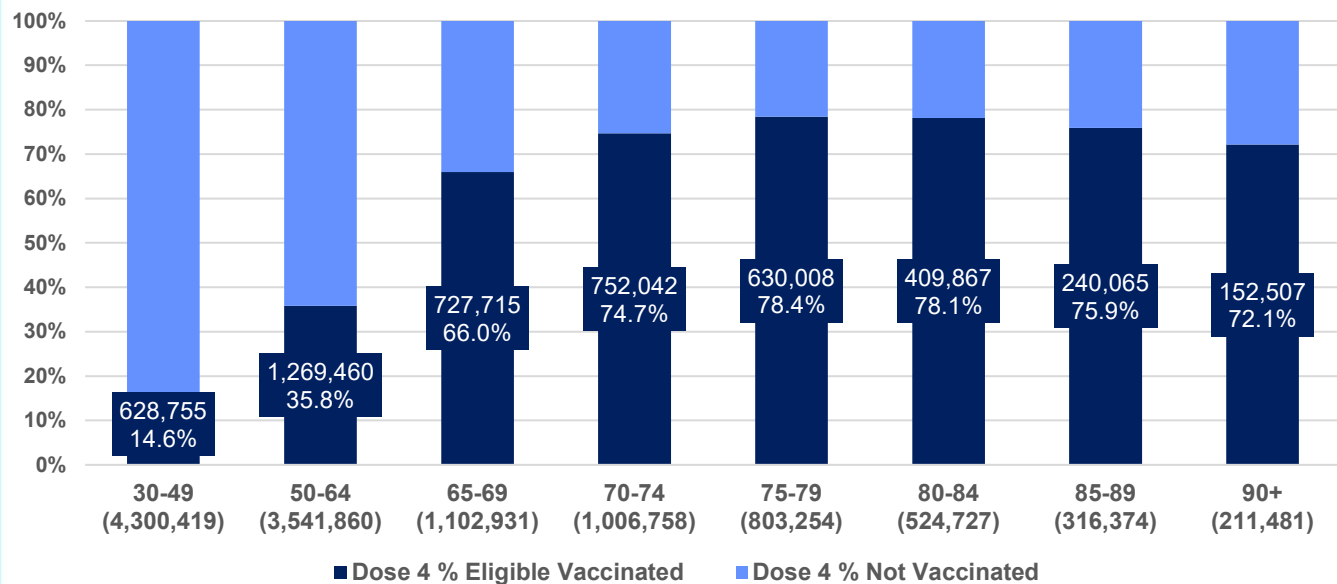
4,844,415
+44,419
40.7%
2,912,204
73.4%

total people (16+) who have received four doses
weekly increase (16+)

of eligible population (30+) (11,807,804)

total people (65+) who have received four doses
of eligible population (65+) (3,965,525)

% Individuals eligible vaccinated by current age



	Number of People 16+	Weekly Increase
ACT	101,403	1,198
NSW	1,554,841	13,889
NT	24,553	413
QLD	933,369	6,814
SA	380,173	3,937
TAS	130,849	1,254
VIC	1,199,032	11,312
WA	491,405	5,145

28,790 doses administered to persons residing in other territories or with missing residential information

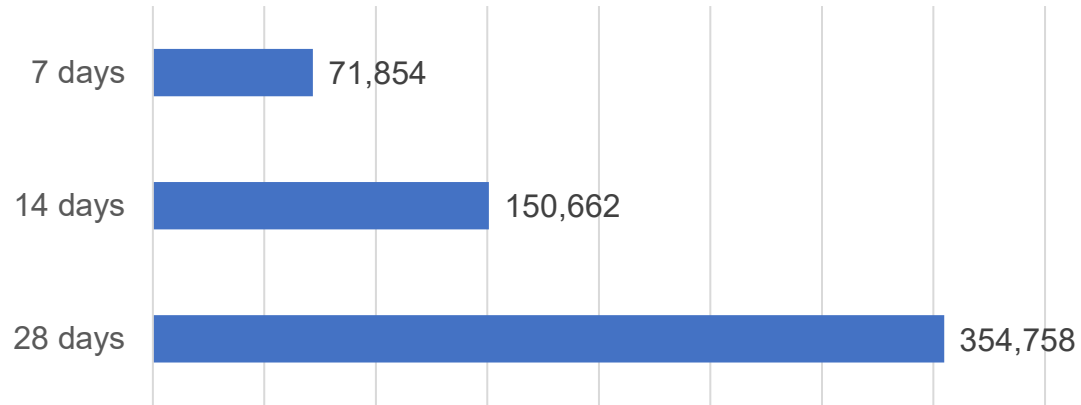
*People become eligible for a fourth dose three months after their third dose. Individuals may belong to multiple groups and could be represented in the above multiple times.
#Aged Care Residents data as at 22 September 2022.

Source: Australian Immunisation Register

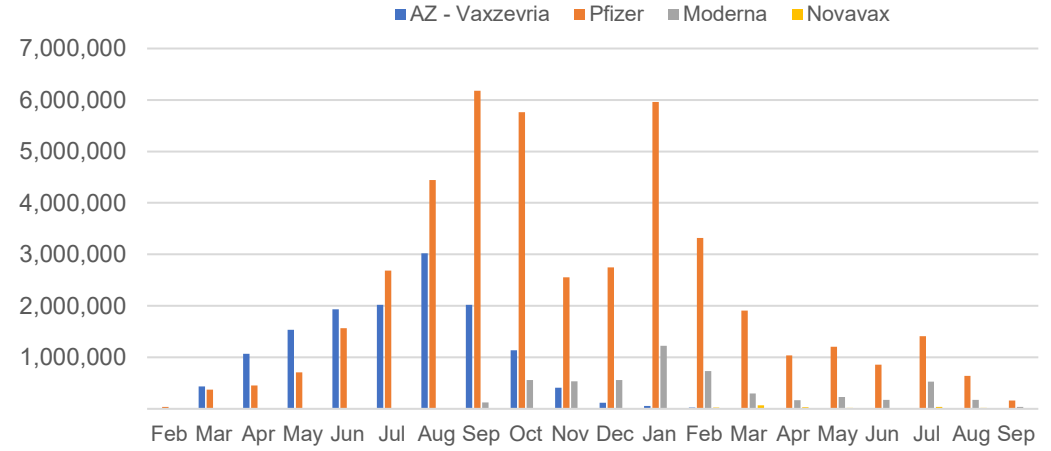
Vaccine milestone charts

Data as at:
20 Sep 2022
Updated weekly

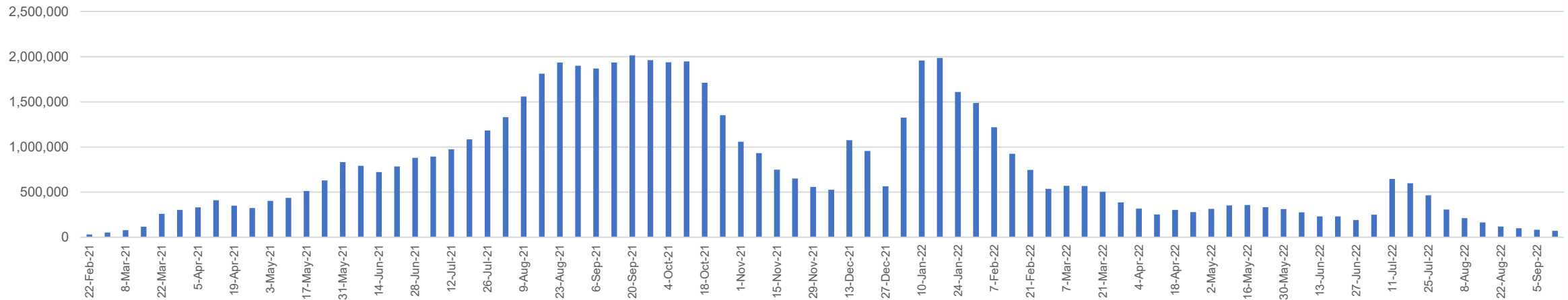
Doses Reported



Doses by administration month and vaccine type



Doses Administered by Week



*Sourced from the Australian Immunisation Register.

Data as at:
20 Sep 2022
Updated weekly

Doses by age and jurisdiction

	AUS	ACT	NSW	NT	QLD	SA	TAS	VIC	WA
5 to 11 - dose 1	1,171,436	31,267	350,960	12,411	201,461	81,819	27,783	318,039	136,493
5 to 11 - dose 2	921,838	27,615	284,854	8,750	152,768	65,146	23,114	250,165	103,942
5 to 11 - population	2,276,638	39,789	716,460	24,750	478,731	148,816	45,033	578,499	244,154
5 to 11 % with dose 1	51.45%	78.58%	48.99%	50.15%	42.08%	54.98%	61.69%	54.98%	55.90%
5 to 11 % with dose 2	40.49%	69.40%	39.76%	35.35%	31.91%	43.78%	51.33%	43.24%	42.57%
12 to 15 - dose 1	1,036,693	20,085	318,252	10,473	202,014	67,257	22,399	270,501	114,028
12 to 15 - dose 2	977,686	19,518	303,497	9,422	187,955	63,398	21,247	257,735	105,264
12 to 15 - population	1,243,990	19,693	390,330	13,060	270,146	82,747	26,308	308,611	132,869
12 to 15 % with dose 1	83.34%	>99%	81.53%	80.19%	74.78%	81.28%	85.14%	87.65%	85.82%
12 to 15 % with dose 2	78.59%	>99%	77.75%	72.14%	69.58%	76.62%	80.76%	83.51%	79.22%
16 and over - dose 1	20,230,776	355,107	6,372,565	172,377	3,895,074	1,386,297	447,619	5,200,182	2,111,148
16 and over - dose 2	19,879,833	349,037	6,268,539	167,671	3,830,251	1,356,385	438,654	5,117,370	2,078,920
16 and over - dose 3	14,252,133	279,757	4,365,848	132,546	2,480,803	1,024,118	325,590	3,778,937	1,726,712
16 and over - population	20,619,959	344,037	6,565,651	190,571	4,112,707	1,440,400	440,172	5,407,574	2,114,978
16 and over % with dose 1	98.11%	>99%	97.06%	90.45%	94.71%	96.24%	>99%	96.16%	>99%
16 and over % with dose 2	96.41%	>99%	95.47%	87.98%	93.13%	94.17%	>99%	94.63%	98.30%
16 and over % with dose 3	69.12%	81.32%	66.50%	69.55%	60.32%	71.10%	73.97%	69.88%	81.64%
30 and over - dose 1	15,839,901	274,919	5,016,750	127,637	3,047,071	1,104,039	356,035	4,066,048	1,654,736
30 and over - dose 2	15,606,010	270,846	4,945,749	124,989	3,004,948	1,085,245	350,271	4,009,598	1,633,331
30 and over - dose 3	12,078,022	229,484	3,734,950	104,222	2,162,239	877,108	281,534	3,162,663	1,422,716
30 and over - dose 4	4,810,419	100,290	1,542,568	24,087	928,132	378,424	130,056	1,189,805	488,693
30 and over - population	15,805,337	258,148	5,042,108	140,343	3,148,826	1,126,262	349,703	4,096,873	1,639,833
30 and over % with dose 1	>99%	>99%	>99%	90.95%	96.77%	98.03%	>99%	>99%	>99%
30 and over % with dose 2	98.74%	>99%	98.09%	89.06%	95.43%	96.36%	>99%	97.87%	>99%
30 and over % with dose 3	76.42%	88.90%	74.08%	74.26%	68.67%	77.88%	80.51%	77.20%	86.76%
30 and over % with dose 4	30.44%	38.85%	30.59%	17.16%	29.48%	33.60%	37.19%	29.04%	29.80%
65 and over - dose 1	4,500,248	65,853	1,457,340	20,783	872,567	359,414	118,130	1,122,282	439,307
65 and over - dose 2	4,439,302	64,805	1,437,648	20,436	862,381	354,871	116,823	1,106,327	434,316
65 and over - dose 3	4,018,674	60,572	1,289,039	18,274	781,181	327,466	108,442	993,980	406,366
65 and over - dose 4	2,912,204	48,835	929,369	11,044	580,822	245,178	82,983	703,166	291,729
65 and over - population	4,192,882	57,745	1,366,640	20,994	831,881	338,903	110,799	1,057,498	407,530
65 and over % with dose 1	>99%	>99%	>99%	98.99%	>99%	>99%	>99%	>99%	>99%
65 and over % with dose 2	>99%	>99%	>99%	97.34%	>99%	>99%	>99%	>99%	>99%
65 and over % with dose 3	95.85%	>99%	94.32%	87.04%	93.91%	96.63%	97.87%	93.99%	>99%
65 and over % with dose 4	69.46%	84.57%	68.00%	52.61%	69.82%	72.34%	74.90%	66.49%	71.58%

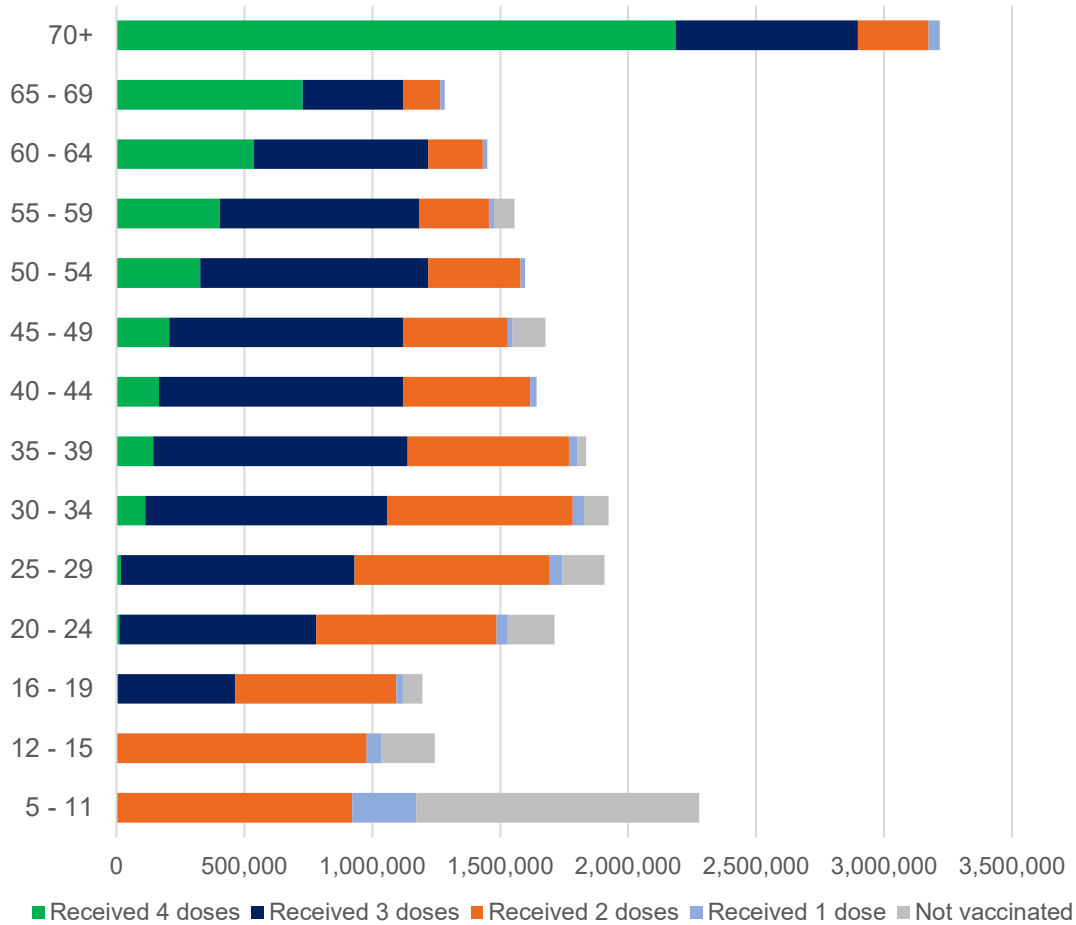
*National population will not equal sum of listed jurisdictions due to a small number of people counted in national population residing in some 'other' territories. Sum of state doses will not add to national total as some records are unable to be geocoded to a State or Territory.

Doses sourced from Australian Immunisation Register, population from ABS ERP June 2020

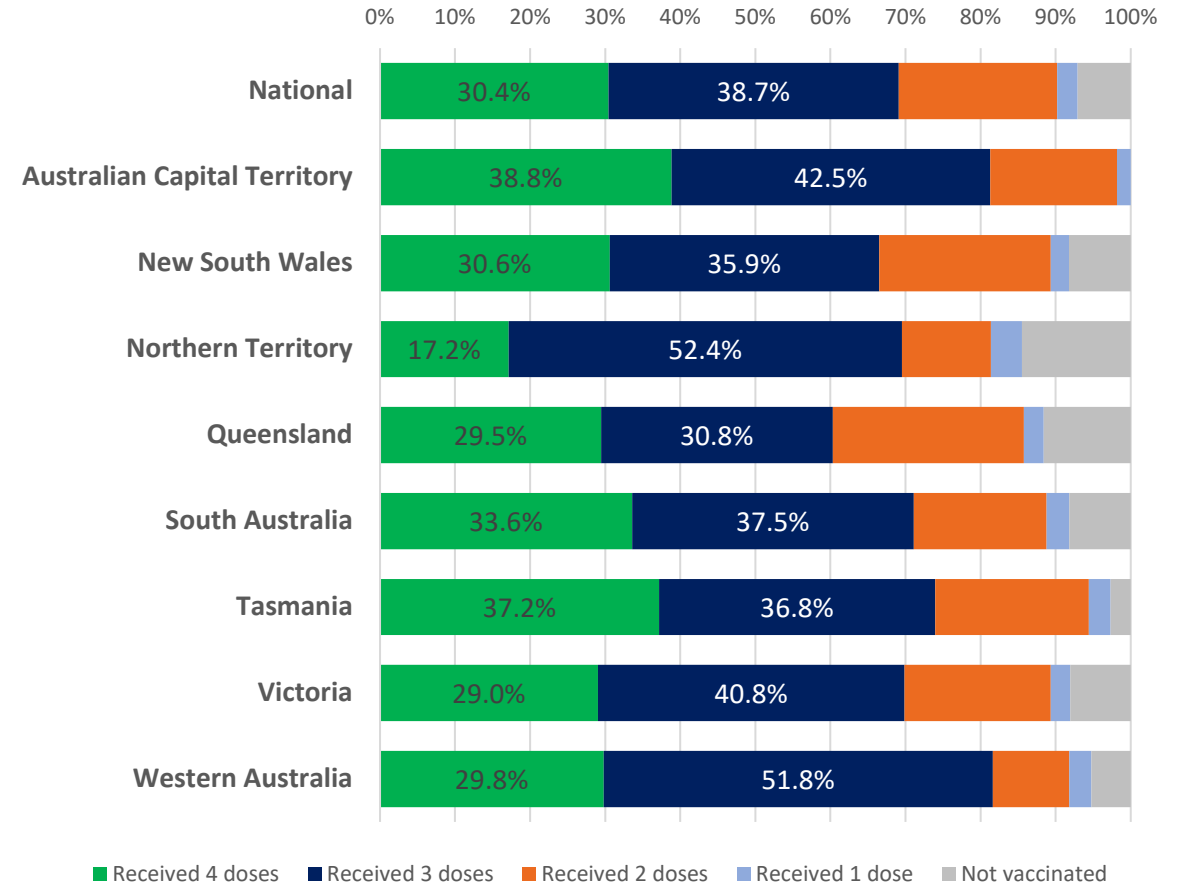
Vaccinations by age and location

Data as at:
20 Sep 2022
Updated weekly

Number of people vaccinated by age

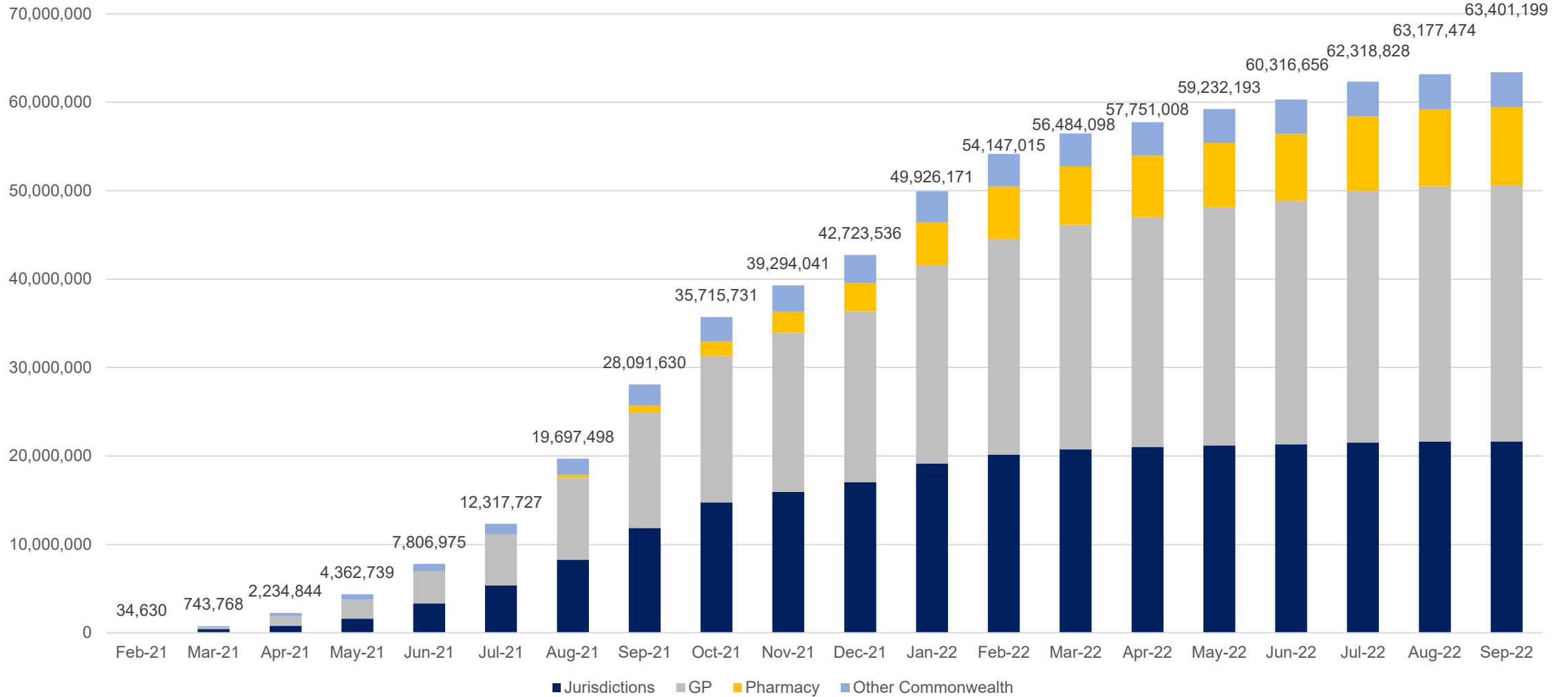


Individuals vaccinated by residential location



Cumulative doses administered by channel

Data as at:
20 Sep 2022
Updated weekly



Source: Australian Immunisation Register

Commonwealth primary care

Data as at:
20 Sep 2022
Updated weekly

Australia's COVID-19
Vaccine Program



Primary care vaccine administration sites

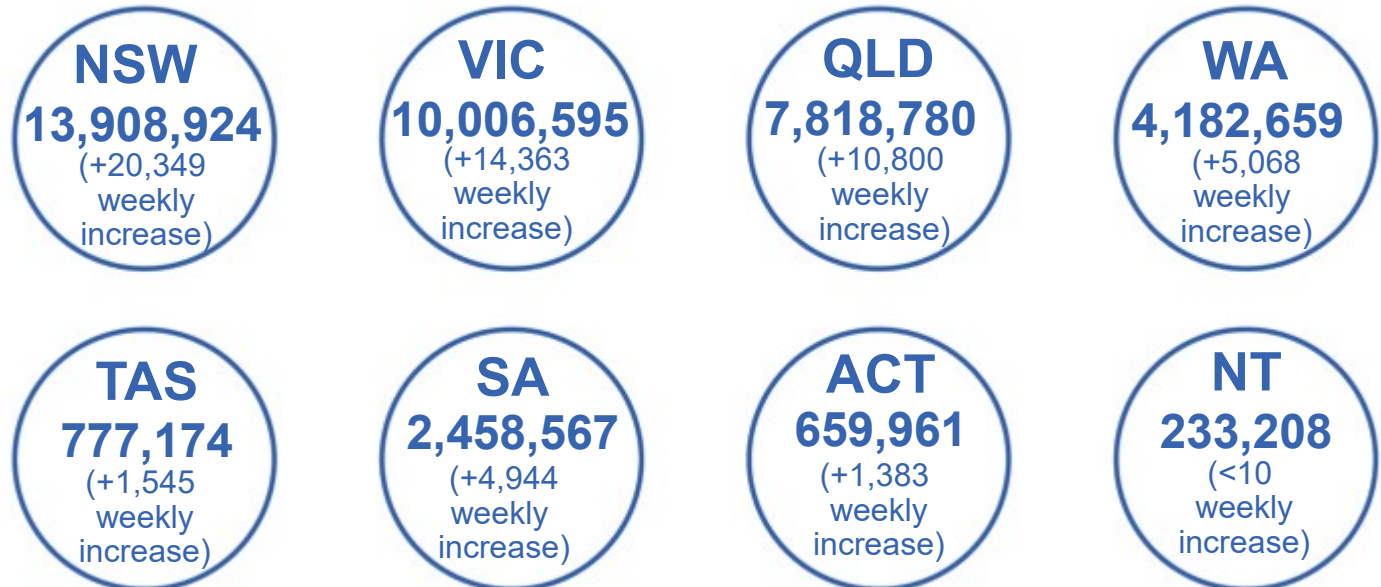
5,455	113	175	3,569
GPs	CVCs	ACCHS	Pharmacies



40,424,918 total vaccine doses administered
in primary care settings
+60,506 weekly increase

Primary care vaccinations by provider type

	Doses administered	Weekly increase
General Practice*	31,623,130	35,339
Pharmacy	8,801,788	25,167



379,050

doses administered to persons residing in other territories or with missing residential information

*General practice includes Commonwealth Vaccination Clinics, Aboriginal Community Health Centres, Royal Flying Doctor Service and other Commonwealth vaccination facilities

Source: Australian Immunisation Register

Aboriginal and Torres Strait Islander peoples

Number of people vaccinated

Data as at:
20 Sep 2022
Updated weekly

Australia's COVID-19
Vaccine Program



People (16+) with at least one dose

449,398 **85.2%**

People (16+) with at least two doses

431,466 **81.8%**



Eligible people (16+) with three doses

240,359 **56.0%**

Eligible people (30+) with four doses

58,008 **33.1%**



People (12-15) with at least one dose

47,042 **66.6%**

People (12-15) with at least two doses

41,042 **58.1%**

175 Aboriginal community controlled health services (ACCHS) sites

0#	50	26	45	9	3	19	23
ACT	NSW	NT	QLD	SA	TAS	VIC	WA

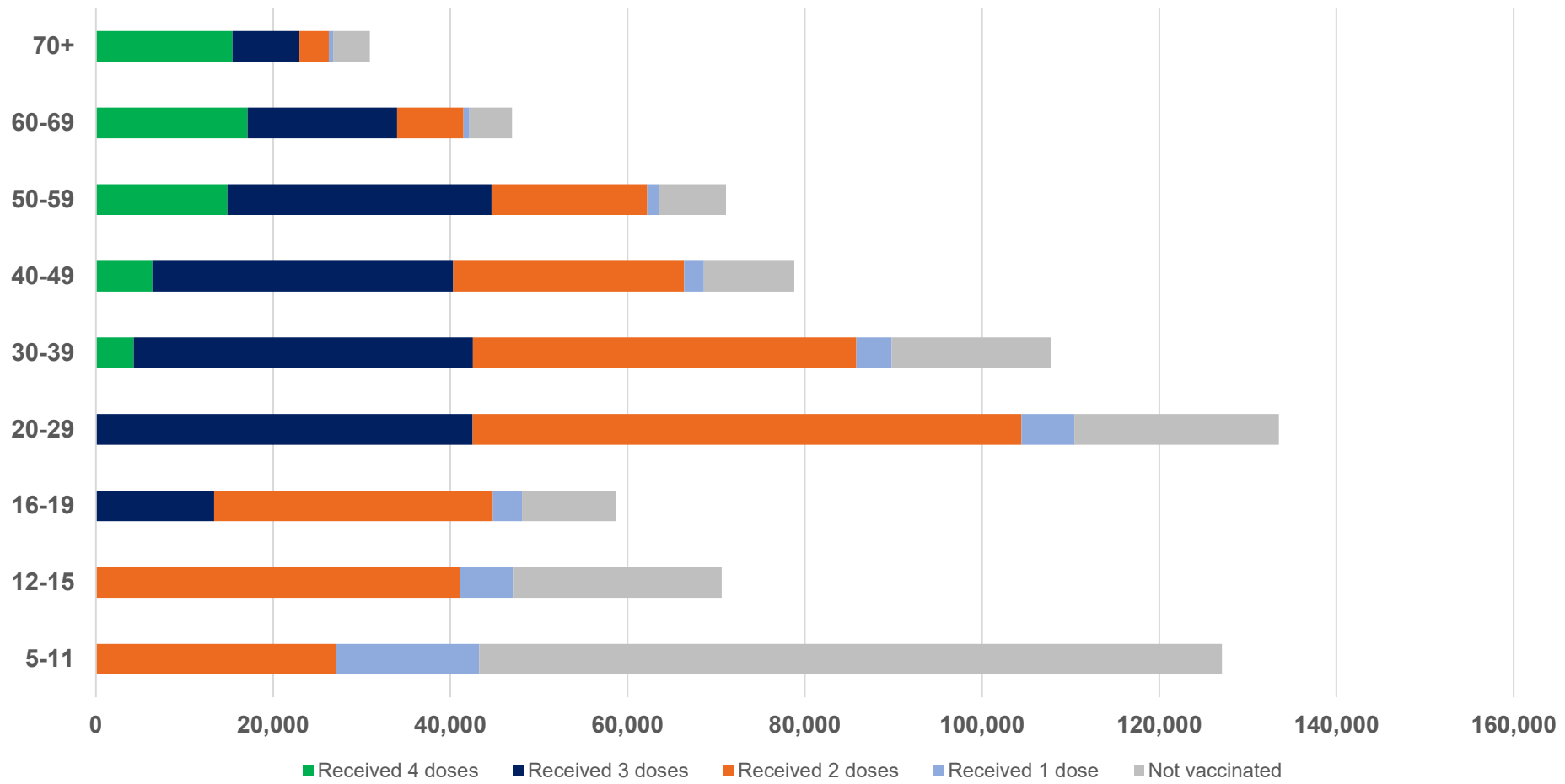
Residential State	Individuals Dose 1 % (16+)	Individuals Dose 2 % (16+)	Individuals Dose 3 % Eligible (aged 16+)	Individuals Dose 4 % Eligible (aged 30+)
ACT	91.9%	89.7%	65.0%	38.8%
NSW	87.5%	85.6%	52.6%	36.7%
NT	89.7%	85.6%	69.6%	23.2%
QLD	82.0%	78.4%	48.8%	35.8%
SA	80.9%	75.5%	60.6%	36.2%
TAS	89.0%	86.6%	60.1%	39.6%
VIC	90.6%	88.6%	62.0%	34.3%
WA	87.0%	81.5%	66.0%	27.2%
Unknown/Other Territories	73.0%	67.9%	49.6%	22.4%
National Coverage %	85.2%	81.8%	56.0%	33.1%
Number with a Dose	449,398	431,466	240,359	58,008
Total / Eligible Population	527,706	527,706	429,456	175,244

Identifying as Aboriginal and Torres Strait Islander is optional and the estimated population may be under reported. Numbers include all Aboriginal and Torres Strait Islander peoples who have received a vaccination, and are not limited to those administered in an ACCHS setting. The total population refers to the number of individuals that identify as Aboriginal and Torres Strait Islander in the Australian Immunisation Register, while the eligible population refers to the number of these individuals who meet the criteria for a further dose (based on completion of previous doses, age, and time period elapsed since last dose). Please note there may be people under 30 who are eligible, but these are not included in coverage rates or population to protect privacy.
#ACCHS in the ACT are currently operating as Commonwealth Vaccine Clinics so not included to avoid double counting.

Aboriginal and Torres Strait Islander peoples

Number of people vaccinated by age

Data as at:
20 Sep 2022
Updated weekly



Source: Australian Immunisation Register

Individuals with Culturally and Linguistically Diverse (CALD) backgrounds data

Data as at:
11 Sep 2022
Updated weekly

Australia's COVID-19
Vaccine Program

People over the age of 16

CALD population *	Total number of individuals in cohort	% People with at least one dose	% People who received two doses	% of eligible people who received three or more doses
General population	20,619,959	>95.0%	>95.0%	71.8%
People born overseas	4,387,400	94.5%	93.9%	73.0%
Speaks a language other than English at home	4,057,670	94.0%	93.4%	68.9%

	General population			Born Overseas			Speaks a language other than English at home		
	% with at least one dose	% who received two doses	% of eligible people who received three or more doses	% with at least one dose	% who received two doses	% of eligible people who received three or more doses	% with at least one dose	% who received two doses	% of eligible people who received three or more doses
ACT	>95.0%	>95.0%	80.2%	>95.0%	>95.0%	78.8%	>95.0%	94.9%	76.1%
NSW	>95.0%	>95.0%	69.7%	94.8%	94.3%	70.4%	94.1%	93.4%	65.7%
NT	90.7%	88.3%	79.1%	94.9%	94.4%	87.9%	93.8%	93.3%	86.6%
Qld	94.6%	93.1%	64.8%	92.1%	91.4%	67.3%	92.4%	91.6%	63.9%
SA	>95.0%	94.1%	75.6%	92.7%	91.7%	75.2%	91.6%	90.6%	71.5%
Tas	>95.0%	>95.0%	74.3%	93.0%	92.4%	76.1%	92.8%	92.1%	72.2%
Vic	>95.0%	94.6%	73.9%	>95.0%	94.7%	73.2%	94.7%	94.1%	69.4%
WA	>95.0%	>95.0%	83.2%	>95.0%	94.5%	85.5%	>95.0%	94.6%	83.5%

*Individuals with Culturally and Linguistically Diverse (CALD) backgrounds are as reported in the 2021 Census, excluding those who have since departed Australia; deceased persons; those born in the UK, Ireland or NZ; and Aboriginal and/or Torres Strait Islander peoples. There is overlap across CALD cohorts where individuals may have reported they had more than one CALD characteristic in the 2021 Census.

Small negative changes may appear when compared with the previous report due to perturbation, in particular for small population groups.

Source: Australian Immunisation Register linked to the Multi-Agency Data Integration Project (Census 2021 characteristics)

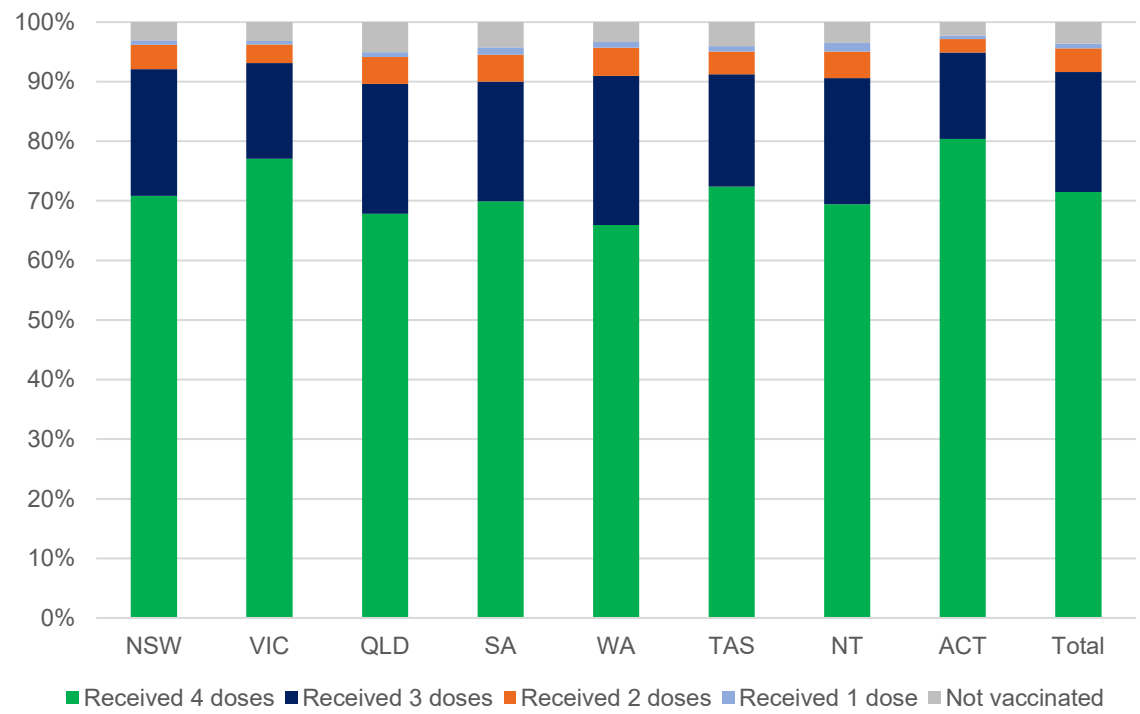
Data as at:
22 Sep 2022
Updated weekly

Residential aged care vaccination rollout

Residential aged care facilities status

160,385	159,051	152,433	118,931
People with at least one dose	People with at least two doses	People with three doses	People with four doses

Aged care resident vaccinations*



Aged care worker vaccinations

Jurisdictions	Total workers with at least one dose	Workers with at least two doses	% Workers with at least one dose	% Workers with at least two doses
NSW	79,100	78,973	99.9%	99.7%
VIC	71,444	71,424	100.0%	100.0%
QLD	48,917	48,902	100.0%	100.0%
SA	27,309	27,300	100.0%	100.0%
WA	24,980	24,972	100.0%	100.0%
TAS	7,489	7,489	100.0%	100.0%
NT	903	903	100.0%	100.0%
ACT	2,950	2,950	100.0%	100.0%
Total	263,092	262,913	100.0%	99.9%

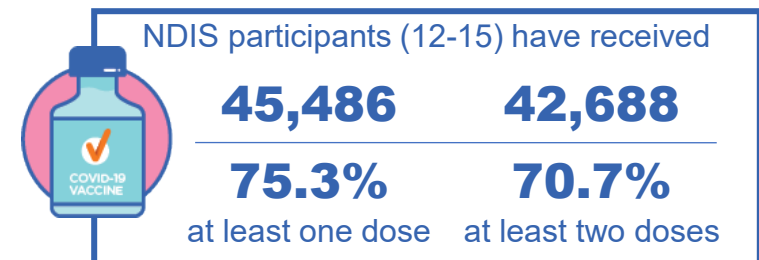
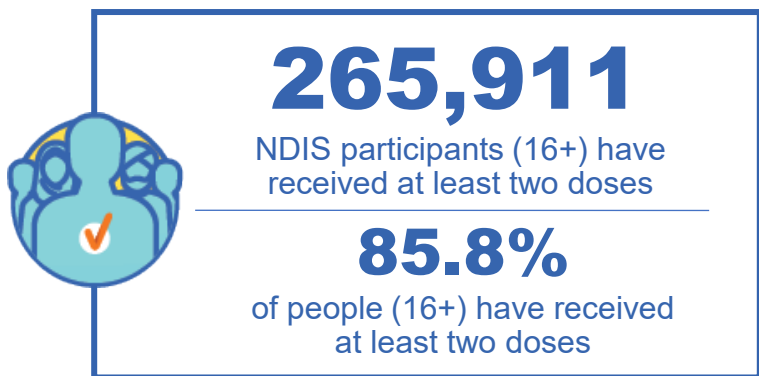
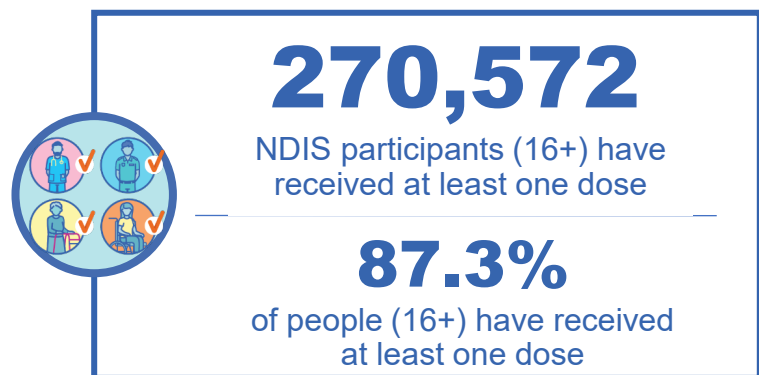
Source: Residential aged care provider self-reported COVID-19 vaccination information and matched AIR data of residents in permanent residential RACFs.

*Self-reported status updates are provided by facilities at least once per week. Reporting is updated Monday to Friday to encompass different facility updates being made on different days.

National Disability Insurance Scheme (NDIS) reported vaccinations

Data as at:
19 Sep 2022
Updated weekly

Australia's COVID-19
Vaccine Program



NDIS participant vaccinations

	% People aged 16+ with at least one dose	% People aged 16+ with at least two doses	% People aged 16+ with three doses	% People aged 16+ with four doses
ACT	89.8%	88.7%	83.7%	36.3%
NSW	87.8%	86.4%	75.4%	33.8%
NT	78.6%	76.3%	79.4%	26.1%
QLD	85.4%	83.8%	71.6%	28.2%
SA	85.3%	83.4%	78.4%	28.6%
TAS	87.7%	85.8%	76.4%	29.6%
VIC	88.5%	87.1%	77.7%	31.1%
WA	88.6%	87.0%	82.3%	31.5%
National	87.3%	85.8%	76.4%	31.1%

Source: Linkage between National Disability Insurance Agency data and the Australian Immunisation Register. Total NDIS participant numbers as at 30 August. Australian Immunisation Register data as at 19 September. Includes all participants regardless of residence type.

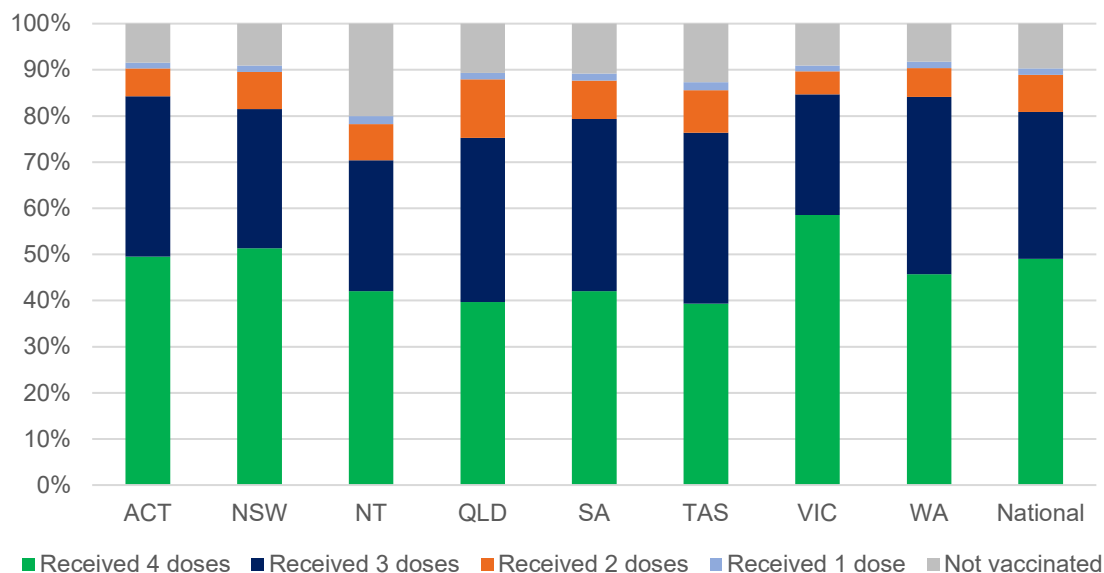
National Disability Insurance Scheme (NDIS) reported vaccinations

Data as at:
19 Sep 2022
Updated weekly

Australia's COVID-19
Vaccine Program

NATIONAL	People with at least one dose	People with at least two doses	Total number of individuals in cohort	% People with at least one dose	% People with at least two doses
NDIS participants living in disability accommodation	21,908	21,569	24,187	90.6%	89.2%

NDIS participants in disability and aged care accommodation



Source: Linkage between National Disability Insurance Agency data and the Australian Immunisation Register. Includes participants residing in disability accommodation only.
Source: Total NDIS participant numbers as at 30 August. Participant data as at 18 September. Australian Immunisation Register data as at 19 September. Worker data as at 21 September.

NDIS workforce vaccinations

	NDIS workers with at least one dose	NDIS workers with at least two doses	% NDIS workers with at least one dose	% NDIS workers with at least two doses
NSW	129,033	124,805	98.4%	95.1%
VIC	118,038	115,243	97.7%	95.4%
QLD	71,593	70,810	98.0%	96.9%
WA	34,396	33,016	98.9%	94.9%
SA	35,632	34,223	98.7%	94.8%
TAS	12,495	12,169	98.5%	95.9%
ACT	12,330	12,305	99.8%	99.6%
NT	3,644	3,497	99.6%	95.5%
TOTAL	417,161	406,068	98.2%	95.6%

Source: the NDIS Commission has established a requirement for registered NDIS providers who provide intensive disability support services to report on the vaccination status of workers they employ, or otherwise engage, to deliver NDIS-funded supports and services, and who are required to be vaccinated in accordance with in-force state and territory public health orders. The statistics reflect data reported to the NDIS Commission by registered NDIS providers and should be considered indicative and subject to change

Note: Some registered NDIS providers are yet to report on the vaccination status of their workforce. The NDIS Commission is working with those providers around reporting requirements. Remaining workers not included include those exempt from vaccination requirements, workers whose vaccination status is not yet verified by the provider (such as workers on leave) and provider reporting anomalies.