



Australian Government

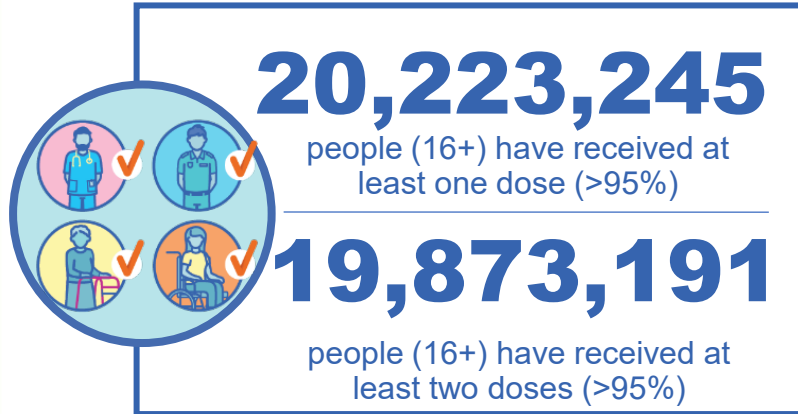
Department of Health and Aged Care

COVID-19 Vaccine Roll-out

15 September 2022

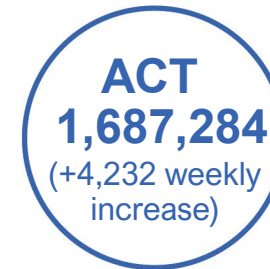
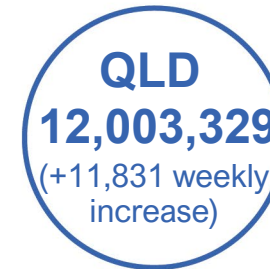
Data as at:
14 Sep 2022
Updated weekly

Total vaccine doses



63,342,668 total vaccine doses administered

+77,176 weekly increase

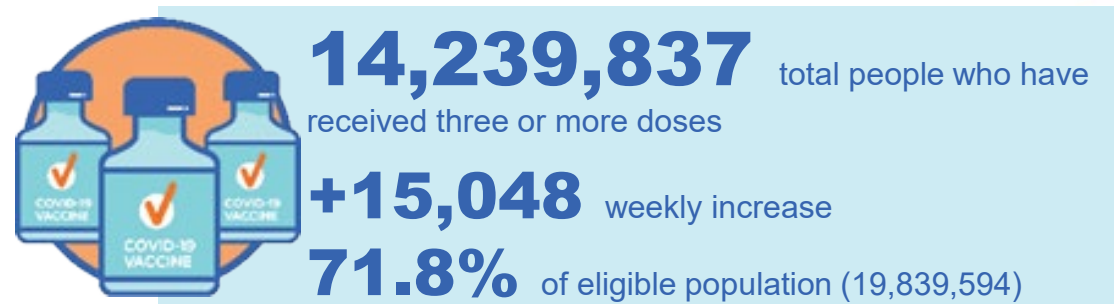
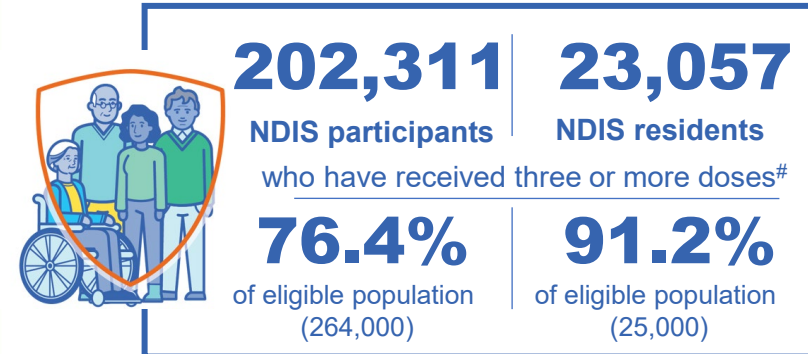
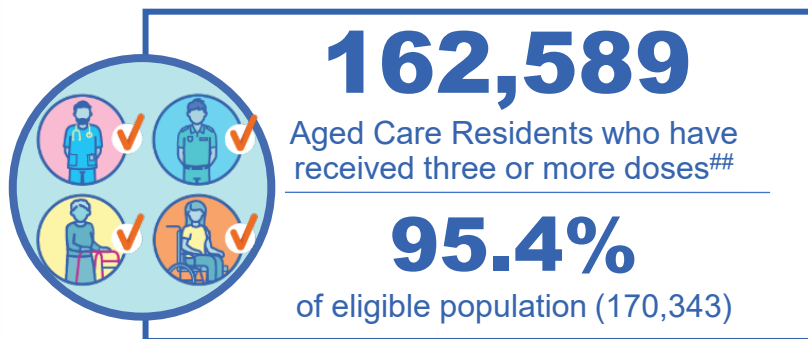
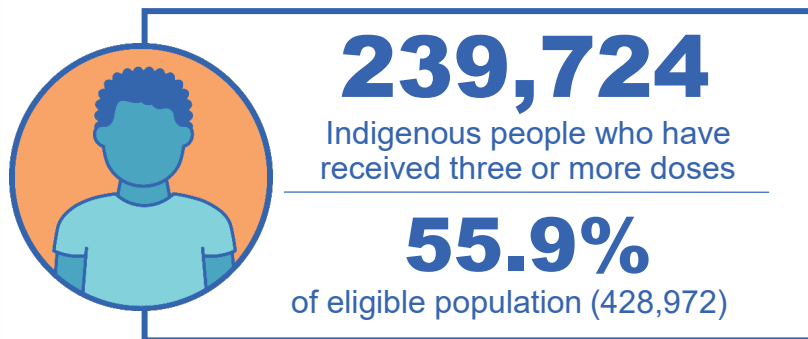


*Administration state breakdown indicates state in which a vaccine was administered

Source: Australian Immunisation Register

Third Doses

Data as at:
14 Sep 2022##
Updated weekly



	Number of People	Weekly Increase	% of Eligible
ACT	279,628	215	80.2%
NSW	4,360,746	5,738	69.7%
NT	132,637	<10	79.1%
QLD	2,478,584	2,393	64.9%
SA	1,023,294	1,135	75.7%
TAS	325,353	269	74.3%
VIC	3,776,580	2,990	73.9%
WA	1,725,832	1,038	83.2%

137,183

doses administered to persons residing in other territories or with missing residential information


*People may belong to multiple groups and could be represented in the above breakdowns multiple times.
#NDIS participants data as at 14 September 2022. ##Aged Care Residents data as at 15 September 2022.

Source: Australian Immunisation Register

Fourth Doses

Data as at:
14 Sep 2022#
Updated weekly

Australia's COVID-19
Vaccine Program



121,889
Aged Care Residents who have received four or more doses#

81.8%
of eligible population (149,008)



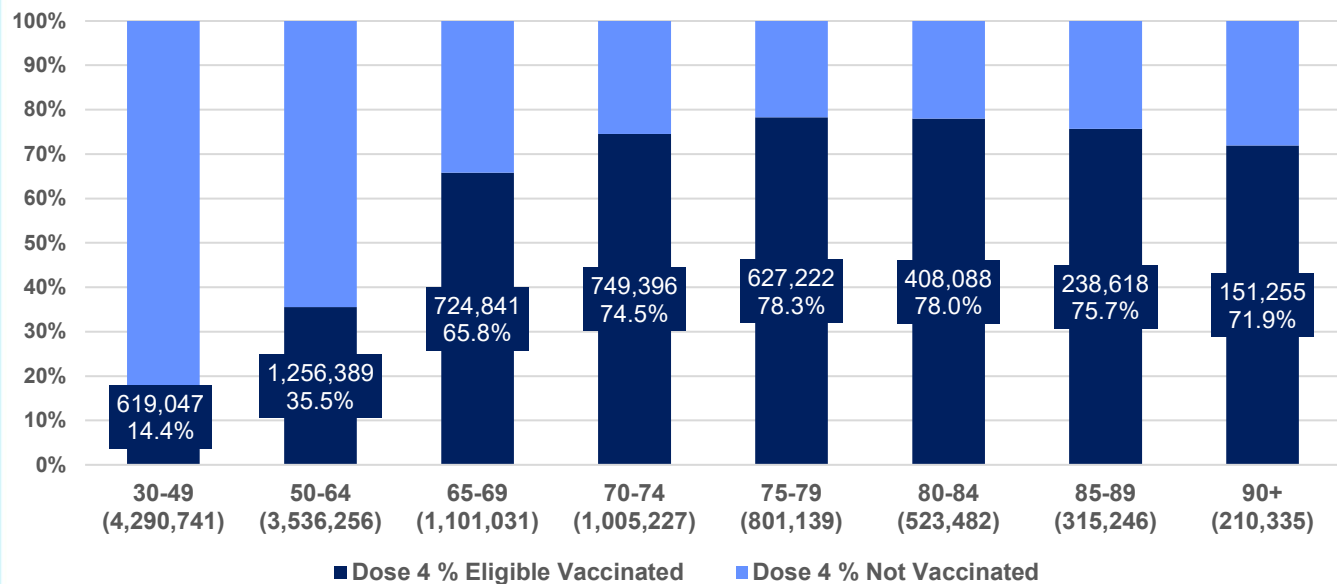
4,808,379
+49,295
40.5%
2,899,420
73.3%

total people (16+) who have received four doses
weekly increase (16+)

of eligible population (30+) (11,783,457)

total people (65+) who have received four doses
of eligible population (65+) (3,956,460)

% Individuals eligible vaccinated by current age



	Number of People 16+	Weekly Increase
ACT	100,392	1,199
NSW	1,543,519	15,492
NT	24,221	403
QLD	927,831	7,382
SA	377,045	4,359
TAS	129,811	1,190
VIC	1,190,009	12,840
WA	487,163	5,787

28,388 doses administered to persons residing in other territories or with missing residential information

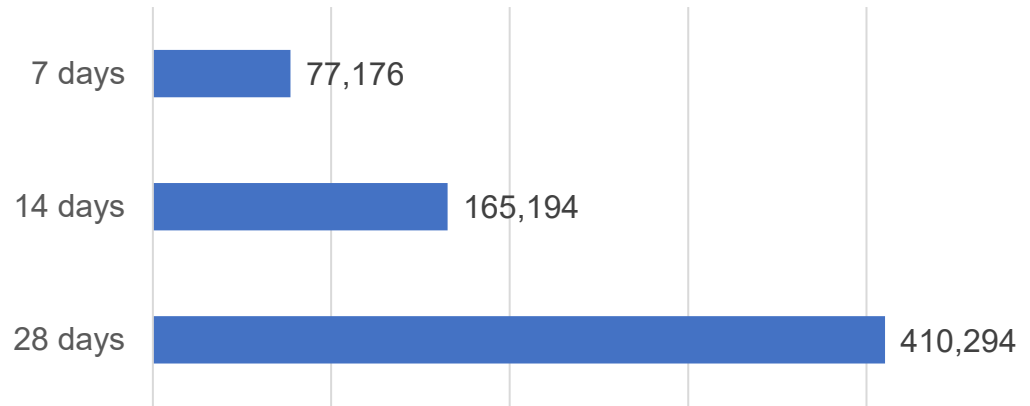
*People become eligible for a fourth dose three months after their third dose. Individuals may belong to multiple groups and could be represented in the above multiple times.
#Aged Care Residents data as at 15 September 2022.

Source: Australian Immunisation Register

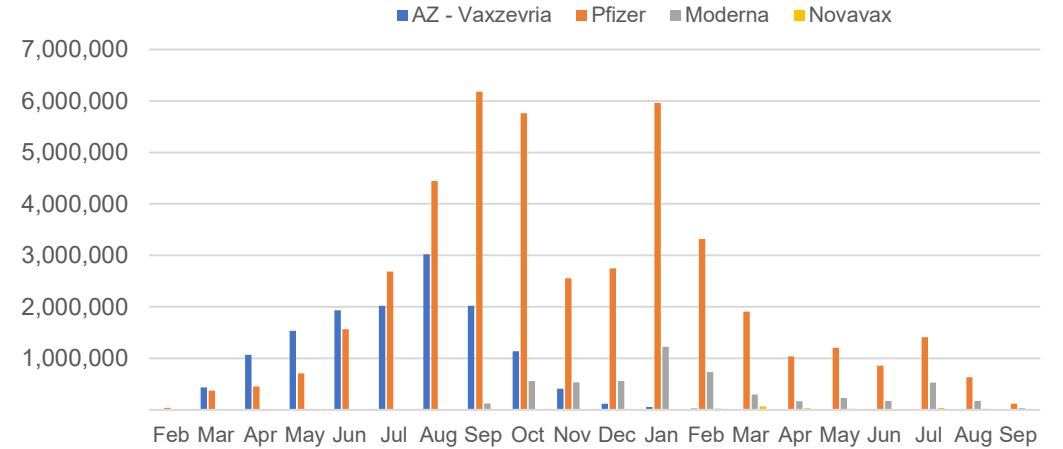
Vaccine milestone charts

Data as at:
14 Sep 2022
Updated weekly

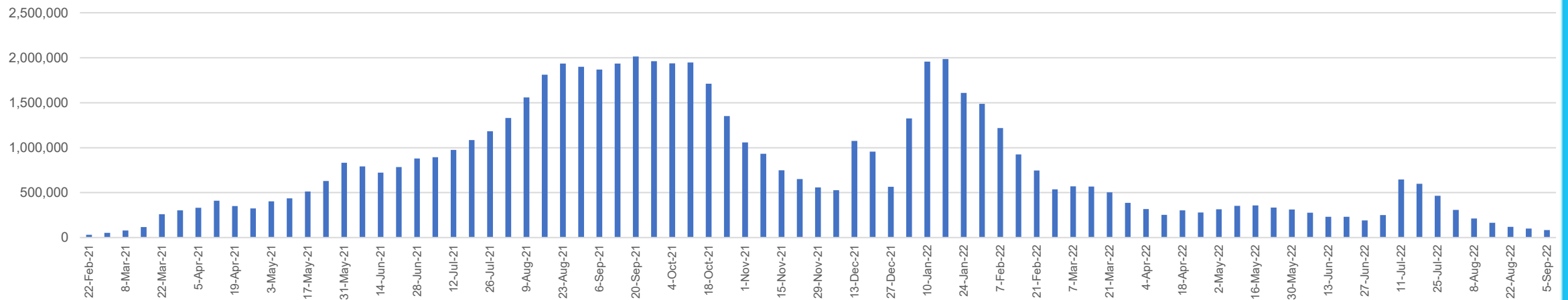
Doses Reported



Doses by administration month and vaccine type



Doses Administered by Week



*Sourced from the Australian Immunisation Register.

Data as at:
14 Sep 2022
Updated weekly

Doses by age and jurisdiction

	AUS	ACT	NSW	NT	QLD	SA	TAS	VIC	WA
5 to 11 - dose 1	1,174,092	31,323	351,745	12,513	201,996	81,996	27,867	318,787	136,831
5 to 11 - dose 2	922,610	27,654	284,923	8,785	152,967	65,208	23,190	250,393	104,065
5 to 11 - population	2,276,638	39,789	716,460	24,750	478,731	148,816	45,033	578,499	244,154
5 to 11 % with dose 1	51.57%	78.72%	49.09%	50.56%	42.19%	55.10%	61.88%	55.11%	56.04%
5 to 11 % with dose 2	40.53%	69.50%	39.77%	35.49%	31.95%	43.82%	51.50%	43.28%	42.62%
12 to 15 - dose 1	1,037,582	20,115	318,475	10,517	202,295	67,339	22,420	270,707	114,195
12 to 15 - dose 2	978,947	19,542	303,842	9,450	188,284	63,477	21,274	258,072	105,466
12 to 15 - population	1,243,990	19,693	390,330	13,060	270,146	82,747	26,308	308,611	132,869
12 to 15 % with dose 1	83.41%	>99%	81.59%	80.53%	74.88%	81.38%	85.22%	87.72%	85.95%
12 to 15 % with dose 2	78.69%	>99%	77.84%	72.36%	69.70%	76.71%	80.87%	83.62%	79.38%
16 and over - dose 1	20,223,245	355,051	6,370,644	172,630	3,893,719	1,385,790	447,475	5,198,251	2,110,320
16 and over - dose 2	19,873,191	348,997	6,266,901	167,922	3,829,045	1,355,906	438,494	5,115,703	2,078,176
16 and over - dose 3	14,239,837	279,628	4,360,746	132,637	2,478,584	1,023,294	325,353	3,776,580	1,725,832
16 and over - population	20,619,959	344,037	6,565,651	190,571	4,112,707	1,440,400	440,172	5,407,574	2,114,978
16 and over % with dose 1	98.08%	>99%	97.03%	90.59%	94.68%	96.21%	>99%	96.13%	>99%
16 and over % with dose 2	96.38%	>99%	95.45%	88.12%	93.10%	94.13%	>99%	94.60%	98.26%
16 and over % with dose 3	69.06%	81.28%	66.42%	69.60%	60.27%	71.04%	73.91%	69.84%	81.60%
30 and over - dose 1	15,832,104	274,841	5,014,668	127,747	3,045,636	1,103,570	355,895	4,063,964	1,653,885
30 and over - dose 2	15,598,782	270,776	4,943,806	125,105	3,003,631	1,084,790	350,127	4,007,696	1,632,546
30 and over - dose 3	12,067,096	229,348	3,730,888	104,244	2,160,374	876,366	281,317	3,160,261	1,421,698
30 and over - dose 4	4,774,856	99,290	1,531,424	23,765	922,678	375,322	129,029	1,180,896	484,484
30 and over - population	15,805,337	258,148	5,042,108	140,343	3,148,826	1,126,262	349,703	4,096,873	1,639,833
30 and over % with dose 1	>99%	>99%	>99%	91.02%	96.72%	97.99%	>99%	>99%	>99%
30 and over % with dose 2	98.69%	>99%	98.05%	89.14%	95.39%	96.32%	>99%	97.82%	>99%
30 and over % with dose 3	76.35%	88.84%	73.99%	74.28%	68.61%	77.81%	80.44%	77.14%	86.70%
30 and over % with dose 4	30.21%	38.46%	30.37%	16.93%	29.30%	33.32%	36.90%	28.82%	29.54%
65 and over - dose 1	4,494,990	65,773	1,455,759	20,770	871,531	359,045	117,989	1,120,935	438,764
65 and over - dose 2	4,434,209	64,735	1,436,116	20,424	861,370	354,508	116,675	1,105,034	433,795
65 and over - dose 3	4,013,540	60,500	1,287,493	18,253	780,217	327,068	108,274	992,706	405,814
65 and over - dose 4	2,899,420	48,618	925,520	10,961	578,824	243,969	82,556	699,827	290,241
65 and over - population	4,192,882	57,745	1,366,640	20,994	831,881	338,903	110,799	1,057,498	407,530
65 and over % with dose 1	>99%	>99%	>99%	98.93%	>99%	>99%	>99%	>99%	>99%
65 and over % with dose 2	>99%	>99%	>99%	97.28%	>99%	>99%	>99%	>99%	>99%
65 and over % with dose 3	95.72%	>99%	94.21%	86.94%	93.79%	96.51%	97.72%	93.87%	>99%
65 and over % with dose 4	69.15%	84.19%	67.72%	52.21%	69.58%	71.99%	74.51%	66.18%	71.22%

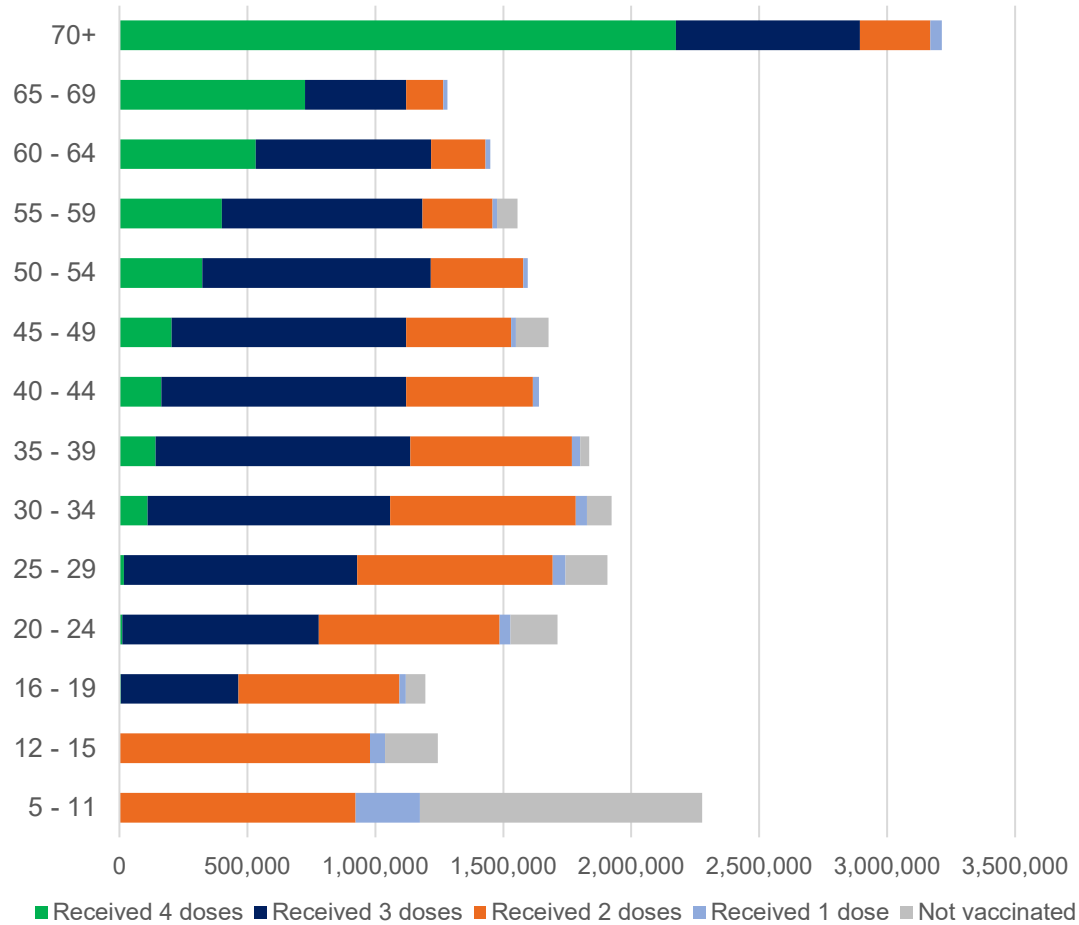
*National population will not equal sum of listed jurisdictions due to a small number of people counted in national population residing in some 'other' territories. Sum of state doses will not add to national total as some records are unable to be geocoded to a State or Territory.

Doses sourced from Australian Immunisation Register, population from ABS ERP June 2020

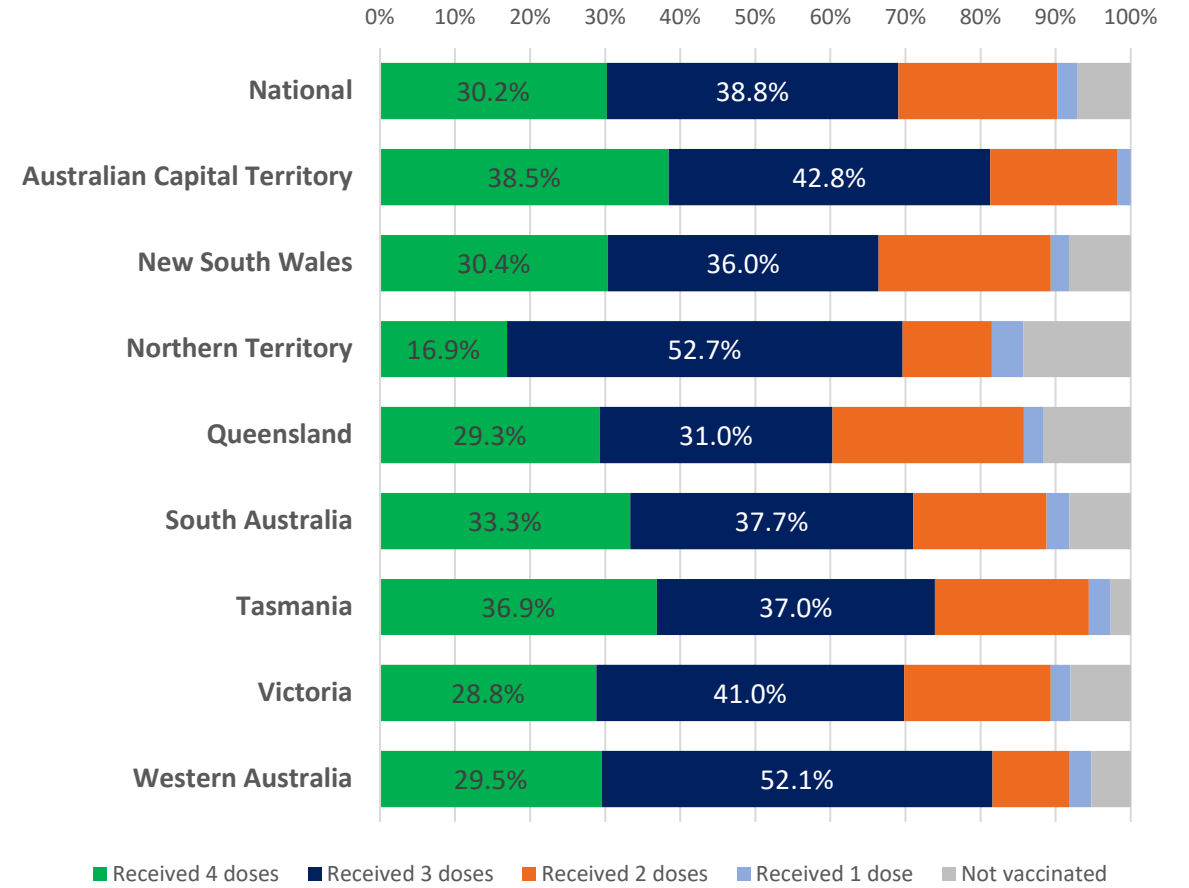
Vaccinations by age and location

Data as at:
14 Sep 2022
Updated weekly

Number of people vaccinated by age

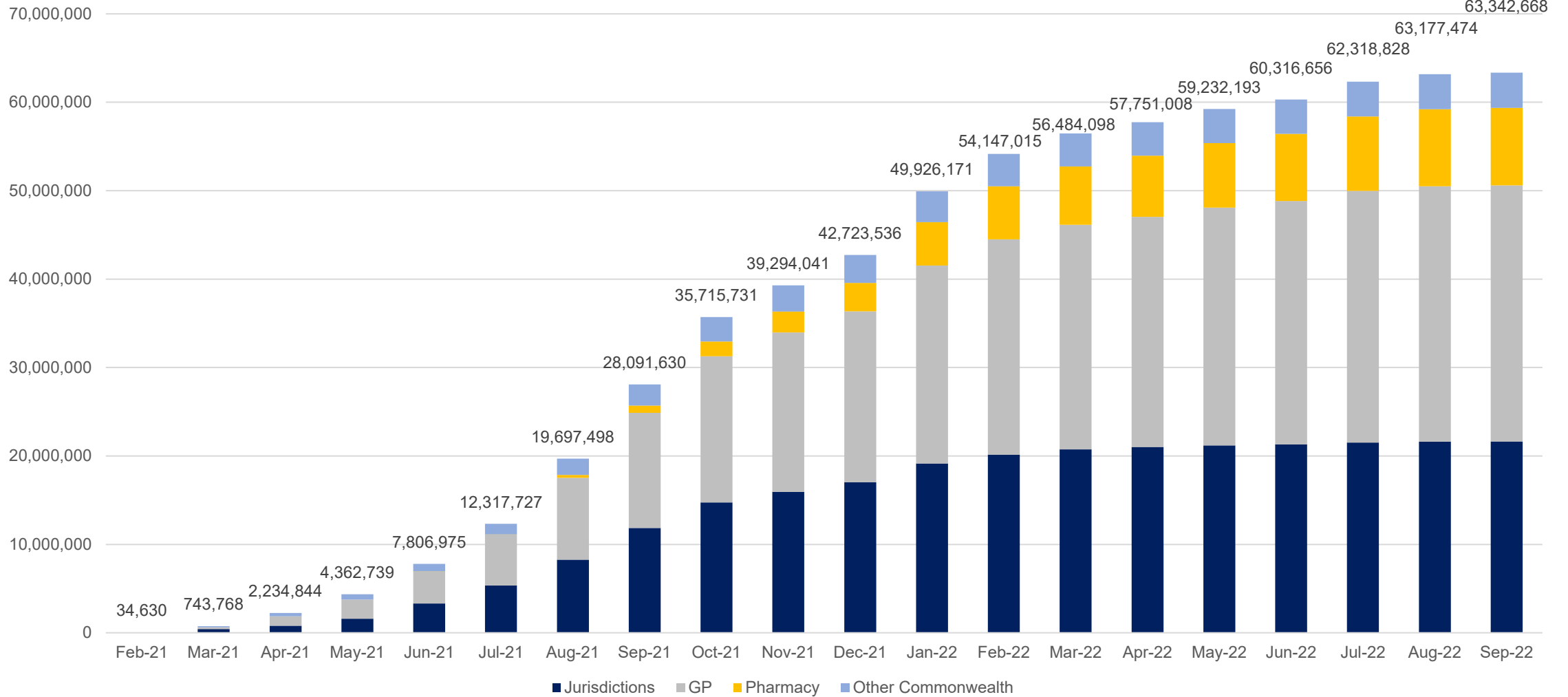


Individuals vaccinated by residential location



Data as at:
14 Sep 2022
Updated weekly

Cumulative doses administered by channel



Source: Australian Immunisation Register

Commonwealth primary care

Data as at:
14 Sep 2022
Updated weekly

Australia's COVID-19
Vaccine Program



Primary care vaccine administration sites

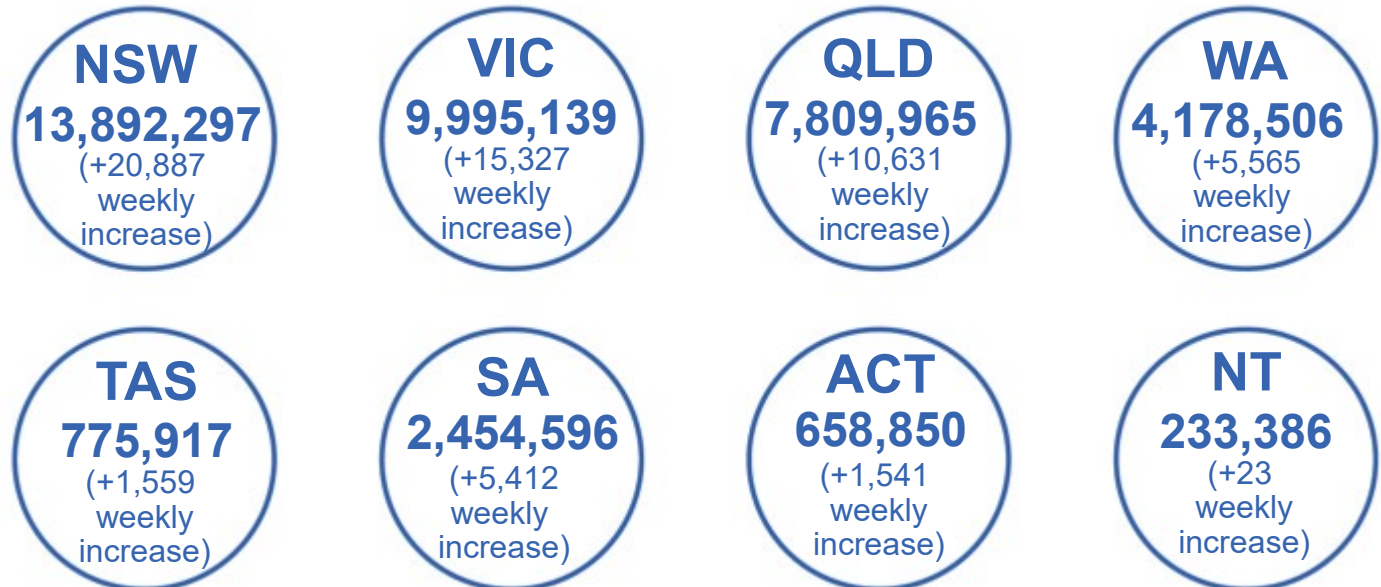
5,481	113	174	3,567
GPs	CVCs	ACCHS	Pharmacies



40,375,503 total vaccine doses administered
in primary care settings
+65,346 weekly increase

Primary care vaccinations by provider type

	Doses administered	Weekly increase
General Practice*	31,594,390	37,568
Pharmacy	8,781,113	27,778



376,847

doses administered to persons residing in other territories or with missing residential information

*General practice includes Commonwealth Vaccination Clinics, Aboriginal Community Health Centres, Royal Flying Doctor Service and other Commonwealth vaccination facilities

Source: Australian Immunisation Register

Aboriginal and Torres Strait Islander peoples

Number of people vaccinated

Data as at:
14 Sep 2022
Updated weekly

Australia's COVID-19
Vaccine Program



448,994

people (16+) have received
at least one dose

85.1%

of people (16+) have received
at least one dose



431,079

people (16+) have received
at least two doses

81.8%

of people (16+) have received
at least two doses



People (12-15) have received

47,135

41,129

66.7%

58.2%

at least one dose at least two doses

174 Aboriginal community controlled health services (ACCHS) sites

0#	50	26	44	9	3	19	23
ACT	NSW	NT	QLD	SA	TAS	VIC	WA

	Individuals Dose 1 % (16+)	Individuals Dose 2 % (16+)	Individuals Dose 3 % Eligible (aged 16+)	Individuals Dose 4 % Eligible (aged 30+)
ACT	91.9%	89.7%	64.7%	38.6%
NSW	87.5%	85.6%	52.5%	36.4%
NT	89.7%	85.6%	69.4%	23.0%
QLD	82.0%	78.4%	48.7%	35.7%
SA	80.9%	75.5%	60.6%	36.0%
TAS	89.0%	86.5%	60.2%	39.5%
VIC	90.6%	88.6%	61.9%	34.1%
WA	87.0%	81.5%	65.9%	26.9%
Unknown/OT	72.7%	67.6%	49.5%	22.0%
National	85.1%	81.8%	55.9%	32.9%

*Identifying as Aboriginal and Torres Strait Islander is optional and the estimated population may be under reported.

**Includes all Aboriginal and Torres Strait Islander peoples who have received a vaccination, not limited to those administered in an ACCHS setting.

#ACCHS in the ACT are currently operating as Commonwealth Vaccine Clinics so not included to avoid double counting.

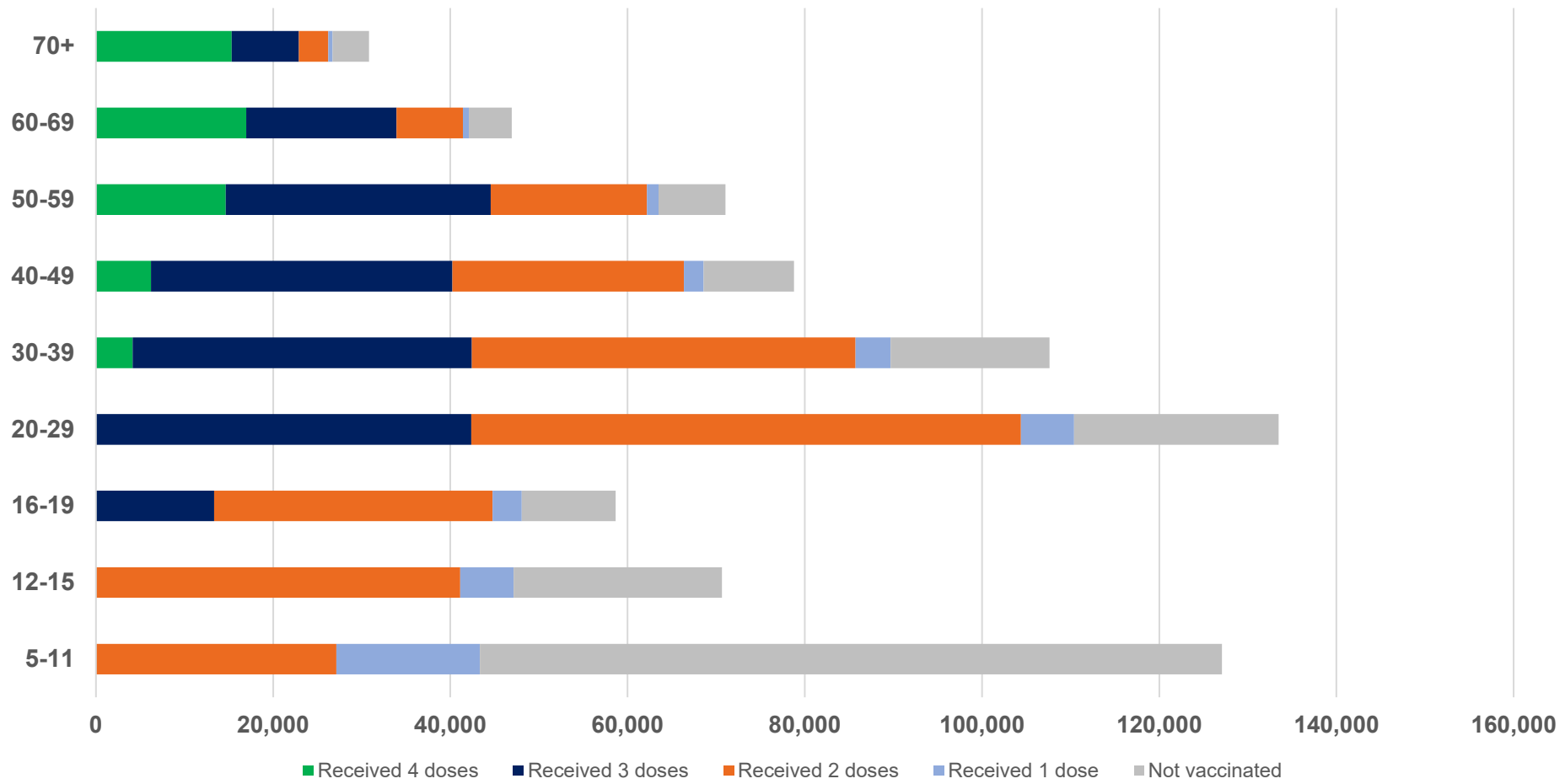
##The above table includes all identified Aboriginal and Torres Strait Islander people who are aged 16 and above by their state of residence.

Source: Australian Immunisation Register

Data as at:
14 Sep 2022
Updated weekly

Aboriginal and Torres Strait Islander peoples

Number of people vaccinated by age



Source: Australian Immunisation Register

Individuals with Culturally and Linguistically Diverse (CALD) backgrounds data

Data as at:
4 Sep 2022
Updated weekly

Australia's COVID-19
Vaccine Program

People over the age of 16

CALD population *	Total number of individuals in cohort	% People with at least one dose	% People who received two doses	% of eligible people who received three or more doses
General population	20,619,959	>95.0%	>95.0%	71.7%
People born overseas	4,414,446	94.4%	93.8%	72.8%
Speaks a language other than English at home	4,078,103	94.0%	93.3%	68.7%

	General population			Born Overseas			Speaks a language other than English at home		
	% with at least one dose	% who received two doses	% of eligible people who received three or more doses	% with at least one dose	% who received two doses	% of eligible people who received three or more doses	% with at least one dose	% who received two doses	% of eligible people who received three or more doses
ACT	>95.0%	>95.0%	80.2%	>95.0%	>95.0%	78.6%	>95.0%	94.9%	76.0%
NSW	>95.0%	>95.0%	69.6%	94.7%	94.2%	70.2%	94.0%	93.3%	65.5%
NT	90.7%	88.3%	79.0%	94.9%	94.4%	87.8%	93.8%	93.3%	86.5%
Qld	94.6%	93.1%	64.8%	92.0%	91.3%	67.2%	92.3%	91.5%	63.8%
SA	>95.0%	94.1%	75.6%	92.5%	91.5%	74.9%	91.5%	90.4%	71.3%
Tas	>95.0%	>95.0%	74.3%	93.1%	92.4%	75.9%	93.0%	92.3%	72.0%
Vic	>95.0%	94.6%	73.9%	>95.0%	94.6%	73.0%	94.6%	94.0%	69.2%
WA	>95.0%	>95.0%	83.1%	>95.0%	94.4%	85.3%	>95.0%	94.5%	83.4%

*Individuals with Culturally and Linguistically Diverse (CALD) backgrounds are as reported in the 2021 Census, excluding those who have since departed Australia; those born in the UK, Ireland or NZ; and Aboriginal and/or Torres Strait Islander peoples. There is overlap across CALD cohorts where individuals may have reported they had more than one CALD characteristic in the 2021 Census.

Small negative changes may appear when compared with the previous report due to perturbation, in particular for small population groups.

Source: Australian Immunisation Register linked to the Multi-Agency Data Integration Project (Census 2021 characteristics)

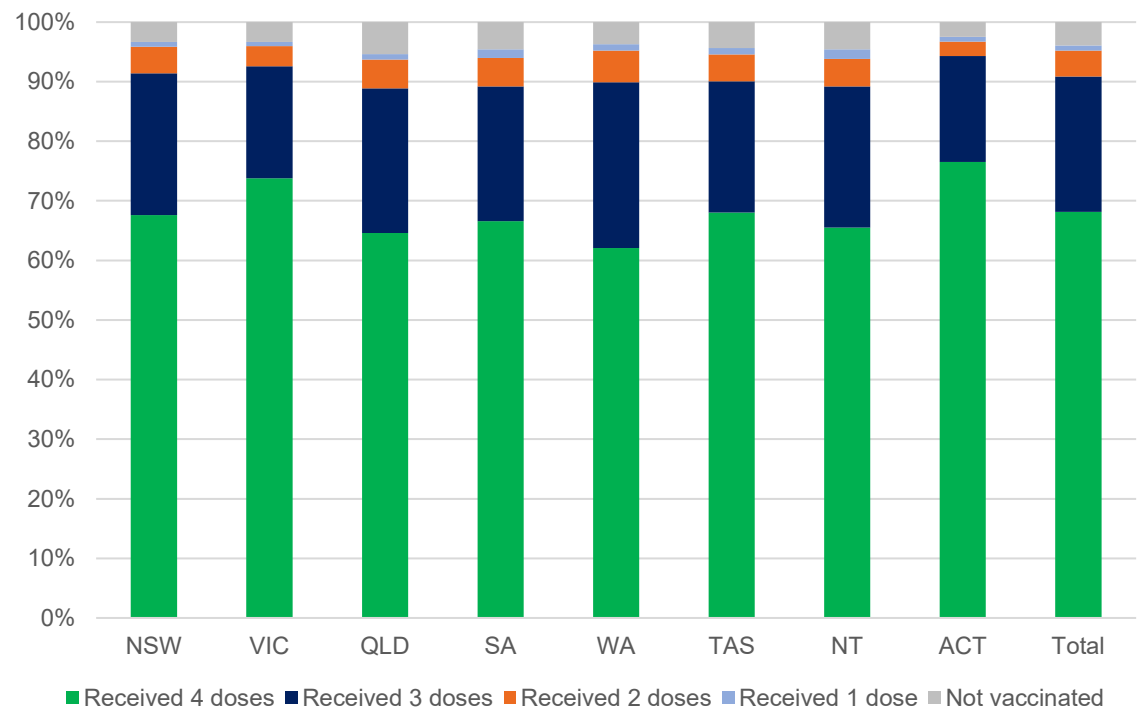
Data as at:
15 Sep 2022
Updated weekly

Residential aged care vaccination rollout

Residential aged care facilities status

171,929	170,343	162,589	121,889
People with at least one dose	People with at least two doses	People with three doses	People with four doses

Aged care resident vaccinations*



Aged care worker vaccinations

Jurisdictions	Total workers with at least one dose	Workers with at least two doses	% Workers with at least one dose	% Workers with at least two doses
NSW	78,949	78,822	99.9%	99.7%
VIC	71,386	71,366	100.0%	100.0%
QLD	48,940	48,925	100.0%	100.0%
SA	27,394	27,382	100.0%	100.0%
WA	24,908	24,900	100.0%	100.0%
TAS	7,525	7,525	100.0%	100.0%
NT	905	905	100.0%	100.0%
ACT	2,971	2,971	100.0%	100.0%
Total	262,978	262,796	100.0%	99.9%

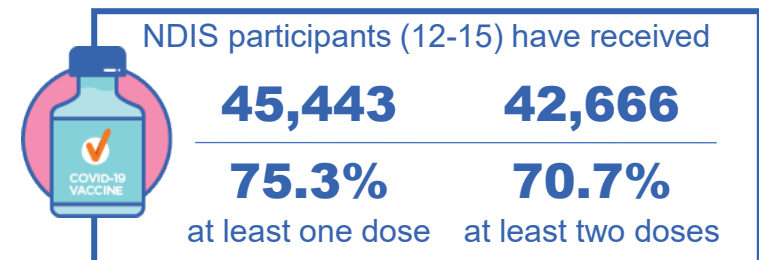
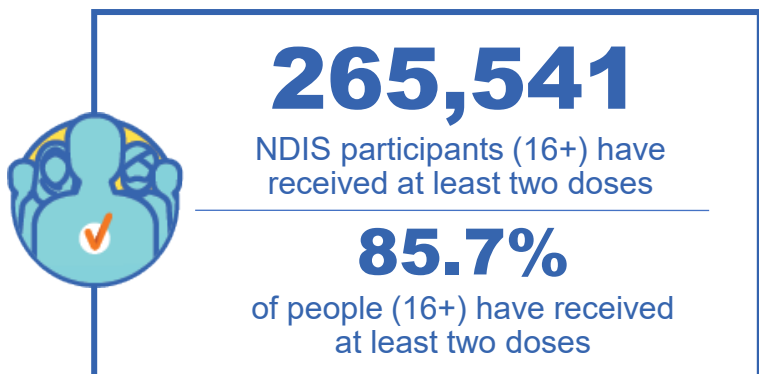
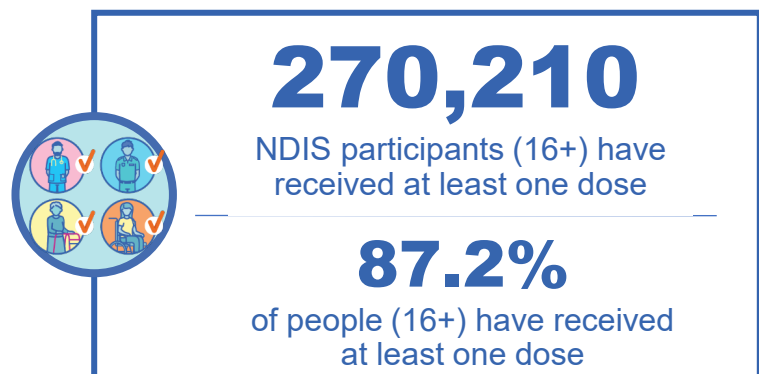
Source: Residential aged care provider self-reported COVID-19 vaccination information and matched AIR data of residents in permanent residential RACFs.

*Self-reported status updates are provided by facilities at least once per week. Reporting is updated Monday to Friday to encompass different facility updates being made on different days.

National Disability Insurance Scheme (NDIS) reported vaccinations

Data as at:
14 Sep 2022
Updated weekly

Australia's COVID-19
Vaccine Program



NDIS participant vaccinations

	% People aged 16+ with at least one dose	% People aged 16+ with at least two doses	% People aged 16+ with three doses	% People aged 16+ with four doses
ACT	89.7%	88.5%	83.7%	36.1%
NSW	87.7%	86.3%	75.4%	33.6%
NT	78.3%	76.1%	79.4%	26.0%
QLD	85.2%	83.6%	71.6%	28.1%
SA	85.1%	83.2%	78.5%	28.3%
TAS	87.6%	85.7%	76.4%	29.5%
VIC	88.4%	87.0%	77.7%	30.8%
WA	88.5%	86.9%	82.3%	31.2%
National	87.2%	85.7%	76.4%	31.0%

Source: Linkage between National Disability Insurance Agency data and the Australian Immunisation Register. Total NDIS participant numbers as at 30 August. Australian Immunisation Register data as at 14 September. Includes all participants regardless of residence type.

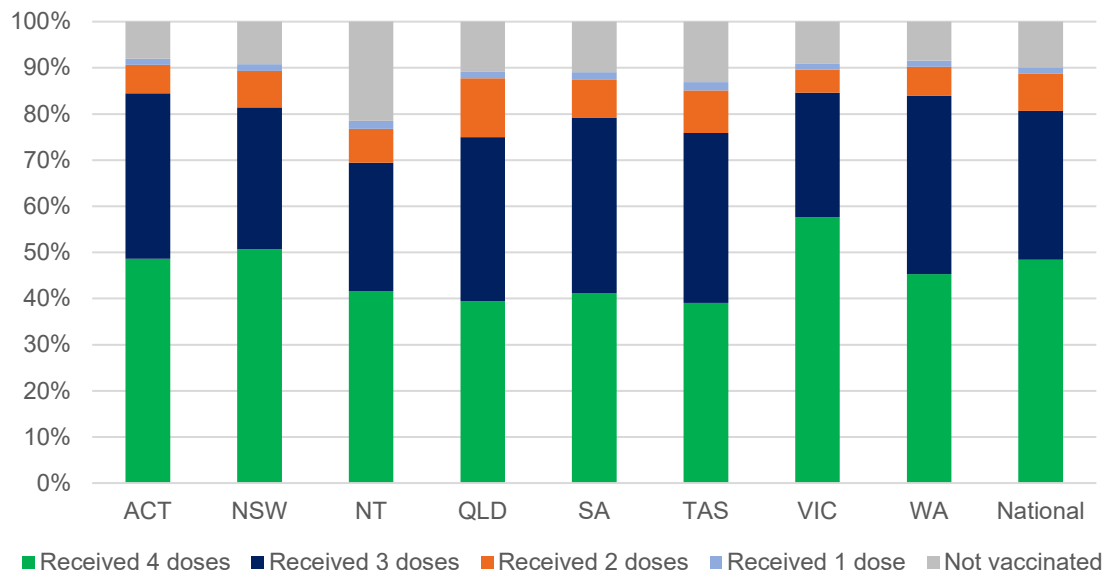
National Disability Insurance Scheme (NDIS) reported vaccinations

Data as at:
14 Sep 2022
Updated weekly

Australia's COVID-19
Vaccine Program

NATIONAL	People with at least one dose	People with at least two doses	Total number of individuals in cohort	% People with at least one dose	% People with at least two doses
NDIS participants living in disability accommodation	21,844	21,502	24,187	90.3%	88.9%

NDIS participants in disability and aged care accommodation



Source: Linkage between National Disability Insurance Agency data and the Australian Immunisation Register. Includes participants residing in disability accommodation only.
Source: Total NDIS participant numbers as at 30 August. Participant data as at 13 September. Australian Immunisation Register data as at 14 September. Worker data as at 14 September.

NDIS workforce vaccinations

	NDIS workers with at least one dose	NDIS workers with at least two doses	% NDIS workers with at least one dose	% NDIS workers with at least two doses
NSW	128,327	124,088	98.5%	95.2%
VIC	118,293	115,463	97.9%	95.6%
QLD	71,669	70,882	98.0%	96.9%
WA	34,391	33,012	98.9%	94.9%
SA	35,825	34,422	98.7%	94.8%
TAS	12,486	12,161	98.5%	95.9%
ACT	12,321	12,296	99.8%	99.6%
NT	3,644	3,497	99.6%	95.5%
TOTAL	416,956	405,821	98.3%	95.7%

Source: the NDIS Commission has established a requirement for registered NDIS providers who provide intensive disability support services to report on the vaccination status of workers they employ, or otherwise engage, to deliver NDIS-funded supports and services, and who are required to be vaccinated in accordance with in-force state and territory public health orders. The statistics reflect data reported to the NDIS Commission by registered NDIS providers and should be considered indicative and subject to change

Note: Some registered NDIS providers are yet to report on the vaccination status of their workforce. The NDIS Commission is working with those providers around reporting requirements. Remaining workers not included include those exempt from vaccination requirements, workers whose vaccination status is not yet verified by the provider (such as workers on leave) and provider reporting anomalies.