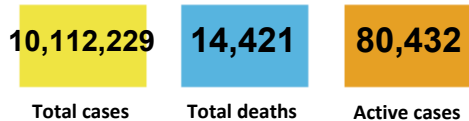




CURRENT STATUS OF CONFIRMED CASES



60



**CURRENT CASES
INTENSIVE CARE UNITS (ICU)**

ACT	NSW	NT	QLD	SA	TAS	VIC	WA
1	27	0	6	8	1	13	4

2,330



**CURRENT CASES
ADMITTED TO HOSPITALS**

ACT	NSW	NT	QLD	SA	TAS	VIC	WA
86	1,503	16	222	77	21	213	192

78,548,492

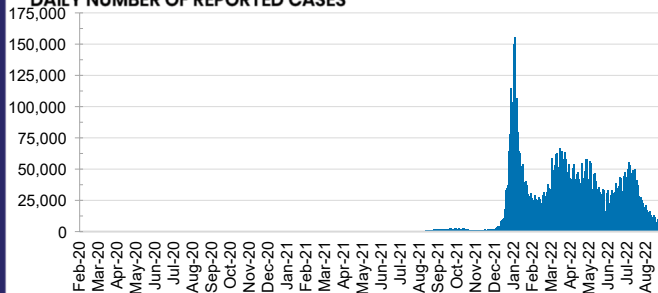


**TOTAL TESTS
REPORTED**

ACT	NSW	NT	QLD
1,322,847	34,792,679	836,784	8,456,948

SA	TAS	VIC	WA
5,598,681	780,154	22,233,284	4,527,115

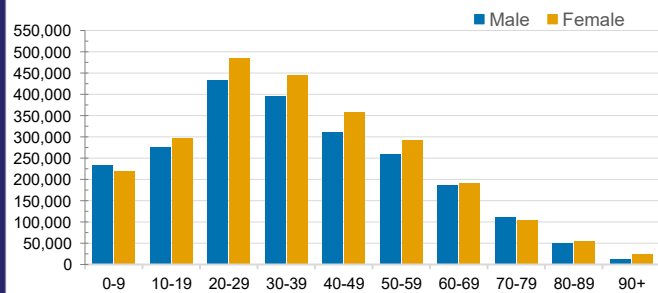
DAILY NUMBER OF REPORTED CASES



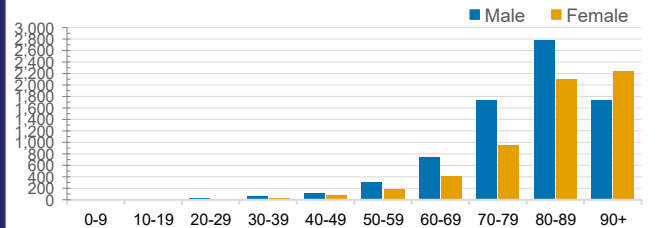
CASES IN AGED CARE SERVICES

Confirmed Cases	Australia	ACT	NSW	NT	QLD	SA	TAS	VIC	WA
Residential Care Recipients	90900 (3968)	1283 (56)	30909 (1435)	307 (10)	15439 (576)	7576 (337)	2227 (37)	25883 (1286)	7276 (231)
In Home Care Recipients	59,558	960	21,183	269	11,885	5,768	1,019	12,618	5,856
Cases in care recipients (deaths)									

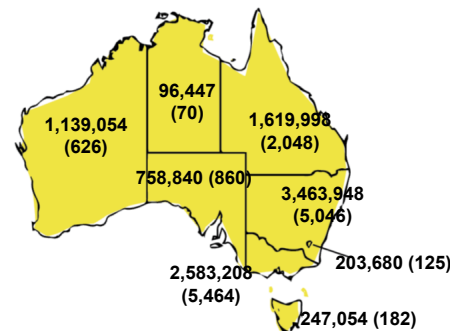
CASES BY AGE GROUP AND SEX



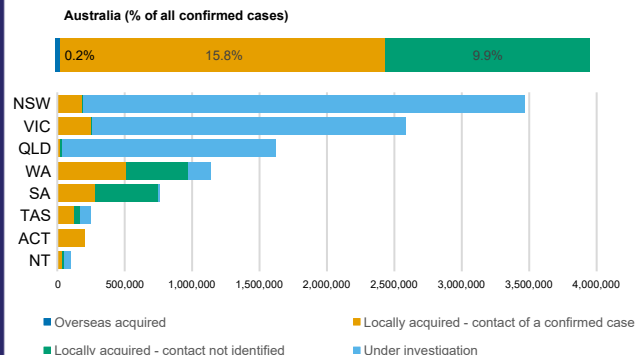
DEATHS BY AGE GROUP AND SEX



CASES (DEATHS) BY STATE AND TERRITORIES



CASES BY SOURCE OF INFECTION



PUBLIC HEALTH RESPONSE MEASURE

