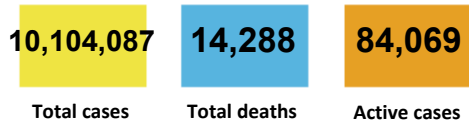
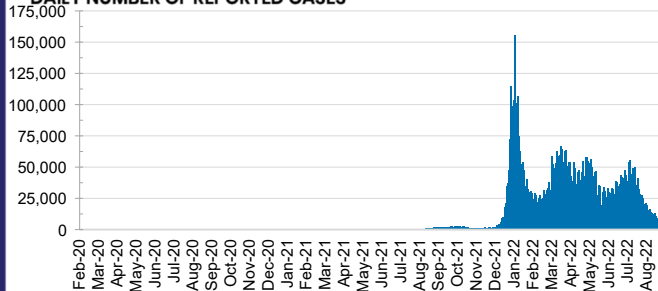




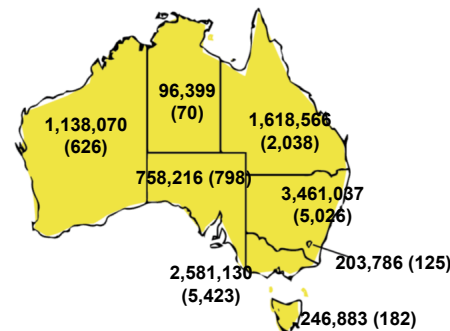
CURRENT STATUS OF CONFIRMED CASES



DAILY NUMBER OF REPORTED CASES



CASES (DEATHS) BY STATE AND TERRITORIES



64



**CURRENT CASES
INTENSIVE CARE UNITS (ICU)**

ACT	NSW	NT	QLD	SA	TAS	VIC	WA
1	29	1	3	7	1	15	7



2,388

**CURRENT CASES
ADMITTED TO HOSPITALS**

ACT	NSW	NT	QLD	SA	TAS	VIC	WA
87	1,530	15	225	83	20	227	201

78,506,903



**TOTAL TESTS
REPORTED**

ACT	NSW	NT	QLD
1,322,133	34,773,558	836,498	8,451,557

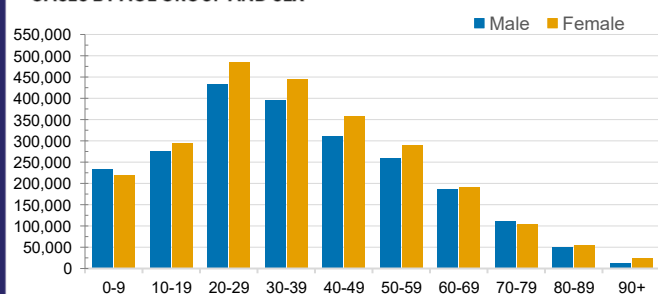
SA	TAS	VIC	WA
5,594,413	779,457	22,224,965	4,524,322

CASES IN AGED CARE SERVICES

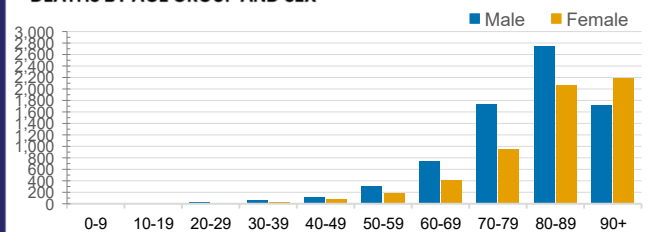
Confirmed Cases	Australia	ACT	NSW	NT	QLD	SA	TAS	VIC	WA
Residential Care Recipients	90739 (3952)	1279 (55)	30835 (1424)	307 (10)	15439 (575)	7544 (336)	2222 (37)	25844 (1284)	7269 (231)
In Home Care Recipients	59,518	961	21,159	269	11,889	0	1,016	12,607	5,855

Cases in care recipients (deaths)

CASES BY AGE GROUP AND SEX

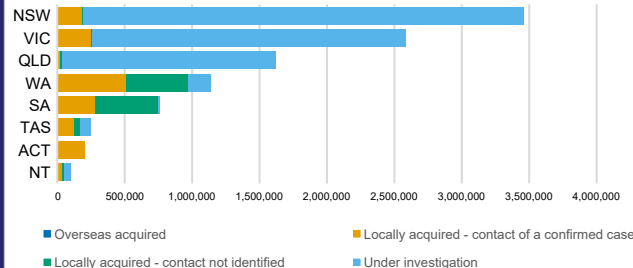


DEATHS BY AGE GROUP AND SEX



CASES BY SOURCE OF INFECTION

Australia (% of all confirmed cases)



PUBLIC HEALTH RESPONSE MEASURE

Proportion of total cases under investigation

