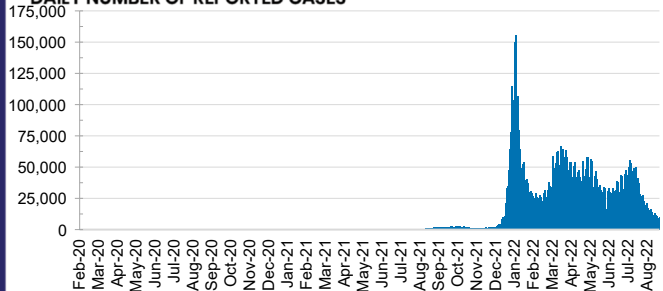




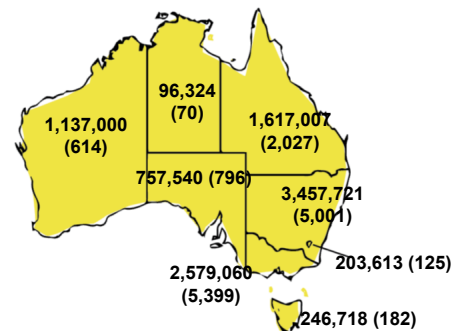
**CURRENT STATUS OF CONFIRMED CASES**



**DAILY NUMBER OF REPORTED CASES**



**CASES (DEATHS) BY STATE AND TERRITORIES**



**80**



**CURRENT CASES  
INTENSIVE CARE UNITS (ICU)**

ACT	NSW	NT	QLD	SA	TAS	VIC	WA
1	37	0	8	8	1	18	7



**2,460**

**CURRENT CASES  
ADMITTED TO HOSPITALS**

ACT	NSW	NT	QLD	SA	TAS	VIC	WA
89	1,581	15	240	90	24	222	199

**78,462,994**



**TOTAL TESTS  
REPORTED**

ACT	NSW	NT	QLD
1,320,943	34,753,391	836,184	8,445,703

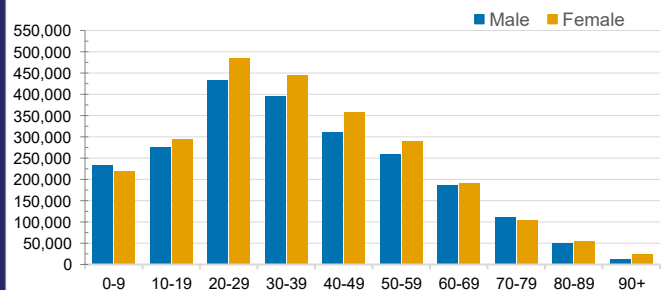
SA	TAS	VIC	WA
5,590,005	778,673	22,216,752	4,521,343

**CASES IN AGED CARE SERVICES**

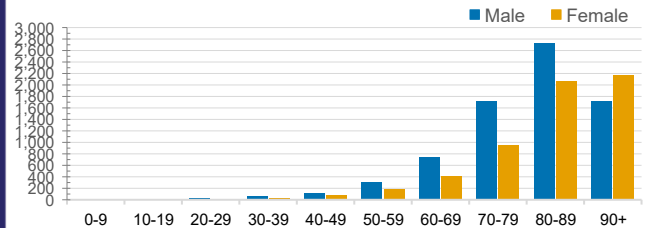
Confirmed Cases	Australia	ACT	NSW	NT	QLD	SA	TAS	VIC	WA
Residential Care Recipients	90543 (3941)	1279 (55)	30751 (1421)	307 (10)	15416 (574)	7528 (335)	2222 (37)	25790 (1281)	7250 (228)
In Home Care Recipients	59,455	961	21,125	269	11,879	5,752	1,016	12,601	5,852

Cases in care recipients (deaths)

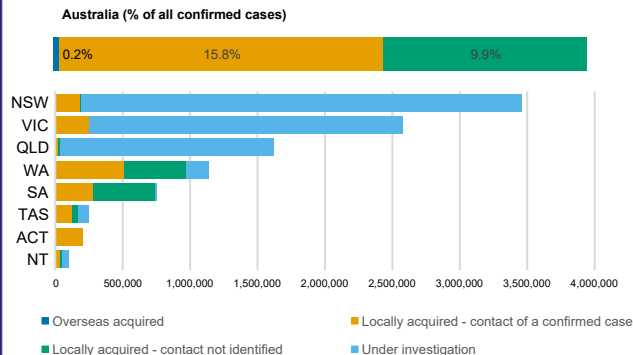
**CASES BY AGE GROUP AND SEX**



**DEATHS BY AGE GROUP AND SEX**



**CASES BY SOURCE OF INFECTION**



**PUBLIC HEALTH RESPONSE MEASURE**

