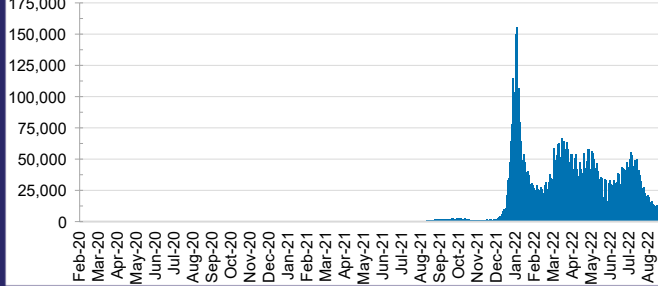




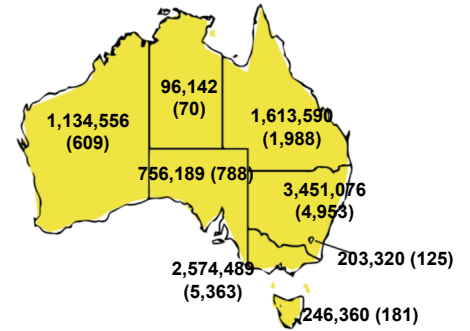
CURRENT STATUS OF CONFIRMED CASES



DAILY NUMBER OF REPORTED CASES



CASES (DEATHS) BY STATE AND TERRITORIES



84



ACT	NSW	NT	QLD	SA	TAS	VIC	WA
1	46	0	8	9	1	14	5

2,694



ACT	NSW	NT	QLD	SA	TAS	VIC	WA
93	1,706	19	279	100	30	266	201

78,381,885



ACT	NSW	NT	QLD
1,318,416	34,718,286	835,551	8,435,243

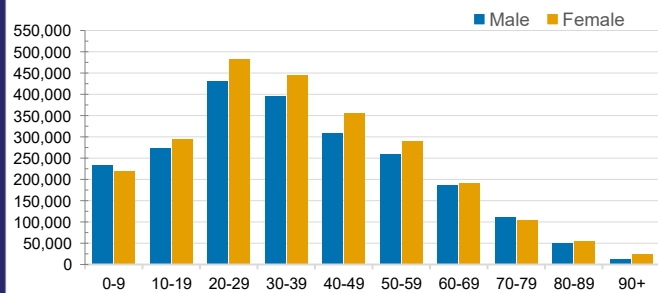
SA	TAS	VIC	WA
5,581,750	777,150	22,200,952	4,514,537

CASES IN AGED CARE SERVICES

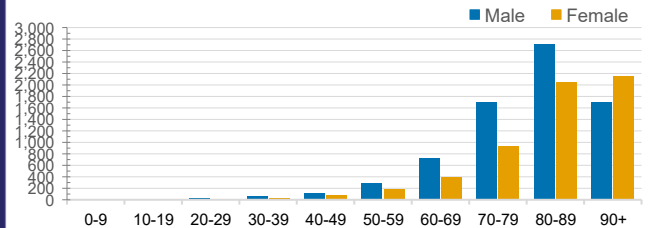
Confirmed Cases	Australia (3922)	ACT (55)	NSW (1409)	NT (10)	QLD (571)	SA (335)	TAS (37)	VIC (1278)	WA (227)
Residential Care Recipients	90131	1260	30604	307	15365	7499	2213	25659	7224
In Home Care Recipients	59,363	959	21,081	269	11,863	5,748	1,013	12,588	5,842

Cases in care recipients (deaths)

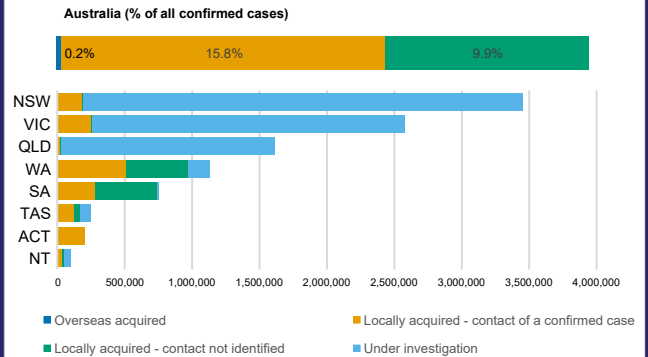
CASES BY AGE GROUP AND SEX



DEATHS BY AGE GROUP AND SEX



CASES BY SOURCE OF INFECTION



PUBLIC HEALTH RESPONSE MEASURE

