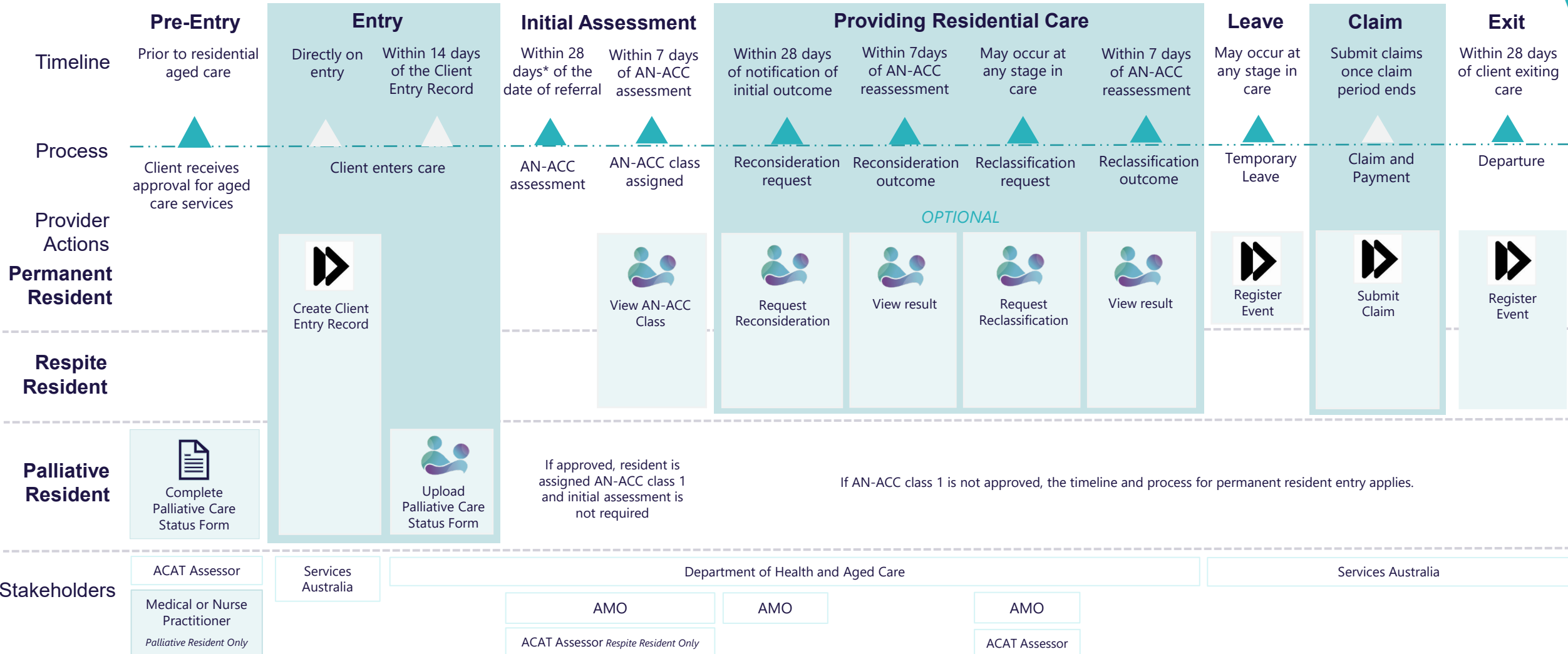




AN-ACC Provider Process Map from 1 October 2022

This map sets out the key process steps and system actions that Residential Aged Care Providers must complete to process a client under the Australian National Aged Care Classification (AN-ACC) model.



* Initial assessments are generally undertaken within 28 days, but may take up to 56 days, of the date of the accepted referral by the Assessment Management Organisation