



Australian Government

Department of Health and Aged Care

COVID-19 Vaccine Roll-out

31 August 2022

Data as at:
30 Aug 2022

Total vaccine doses



63,159,259 total vaccine doses administered nationally as at 30 August

+20,205 recorded in the last 24 hours



20,203,639

people (16+) have received at least one dose (>95%)

19,855,878

people (16+) have received at least two doses (>95%)



14,206,541

people (16+) have received three doses



4,686,392

people (16+) have received four doses

NSW
19,633,959
(+6,069 daily increase)

VIC
16,499,549
(+4,457 daily increase)

QLD
11,973,511
(+3,042 daily increase)

WA
6,907,704
(+2,001 daily increase)

TAS
1,441,164
(+610 daily increase)

SA
4,411,614
(+1,298 daily increase)

ACT
1,677,785
(+2,466 daily increase)

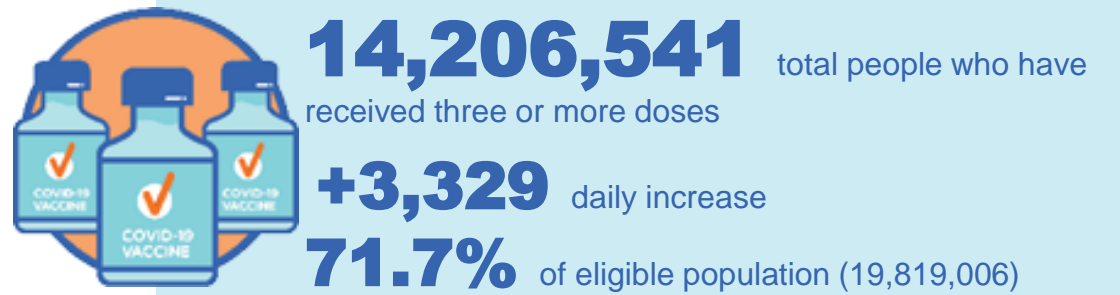
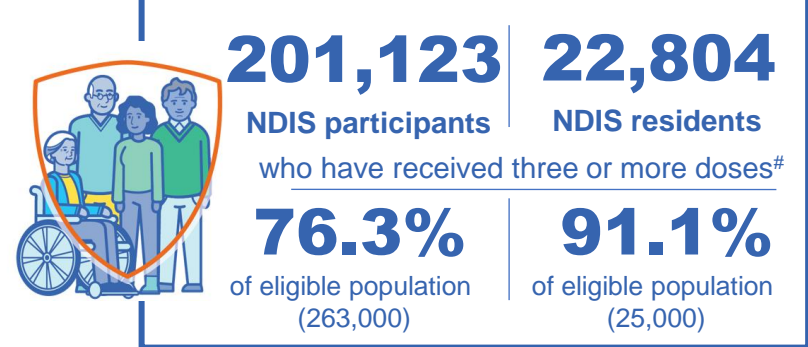
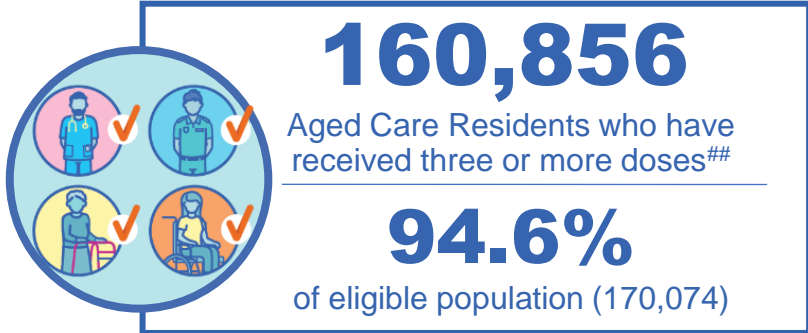
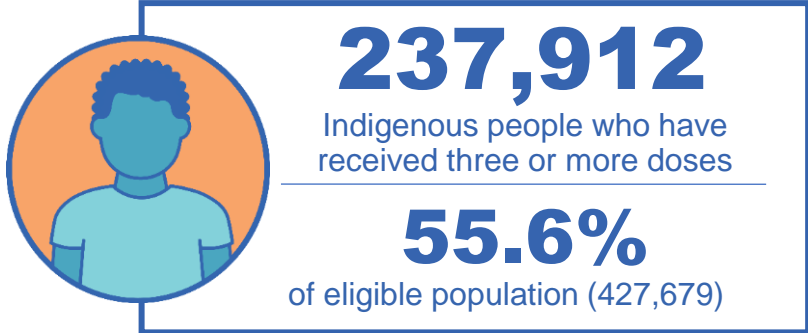
NT
613,973
(+262 daily increase)

*Administration state breakdown indicates state in which a vaccine was administered

Source: Australian Immunisation Register

Third Doses

Data as at: 30 Aug 2022



	Number of People	Daily Increase	% of Eligible
NSW	4,348,413	1,187	69.6%
VIC	3,769,925	540	73.8%
QLD	2,473,171	746	64.8%
WA	1,723,588	195	83.1%
SA	1,020,781	202	75.5%
TAS	324,812	73	74.3%
ACT	279,150	10	80.2%
NT	132,655	24	79.0%


134,046 doses administered to persons residing in other territories or with missing residential information

*People may belong to multiple groups and could be represented in the above breakdowns multiple times.
NDIS participants data as at 28 August 2022. ## Aged Care Residents data as at 25 August 2022.

Source: Australian Immunisation Register

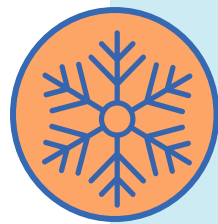
Data as at:
30 Aug 2022

Fourth Doses



114,375
Aged Care Residents who have received four or more doses#

81.3%
of eligible population (140,605)



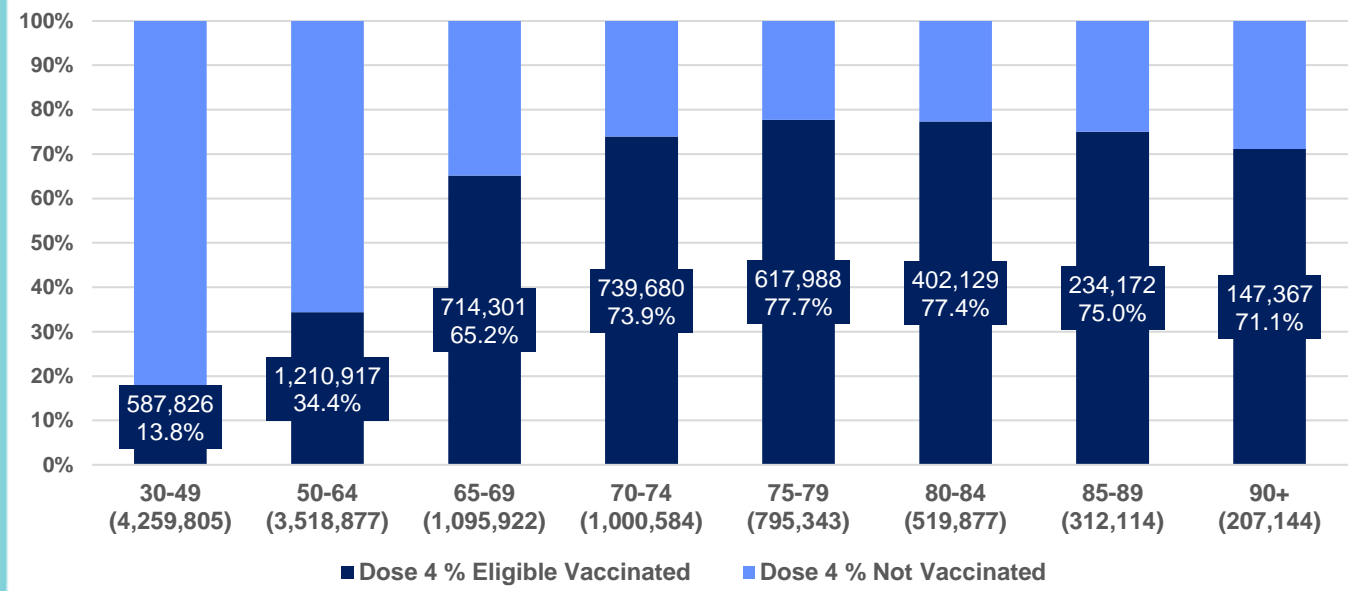
4,686,392
+14,346
39.7%
2,855,637
72.6%

total people (16+) who have received four doses
daily increase (16+)

of eligible population (30+) (11,709,666)

total people (65+) who have received four doses
of eligible population (65+) (3,930,984)

% Individuals eligible vaccinated by current age



	Number of People 16+	Daily Increase
ACT	97,263	462
NSW	1,505,533	4,629
NT	23,145	214
QLD	908,560	2,272
SA	366,928	945
TAS	126,807	499
VIC	1,158,608	3,494
WA	472,883	1,627

26,665 doses administered to persons residing in other territories or with missing residential information

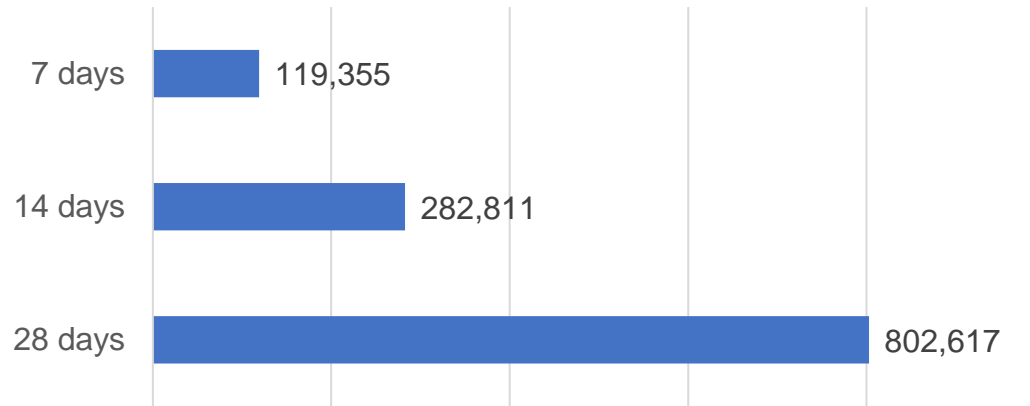
*People become eligible for a fourth dose three months after their third dose. Individuals may belong to multiple groups and could be represented in the above multiple times.
#Aged Care Residents data as at 29 August 2022.

Source: Australian Immunisation Register

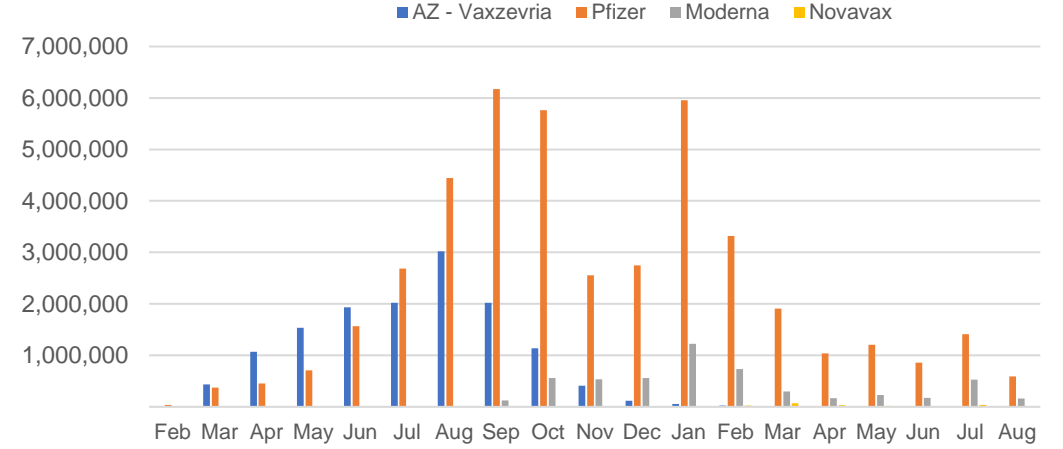
Vaccine milestone charts

Data as at:
28 Aug 2022
Updated weekly

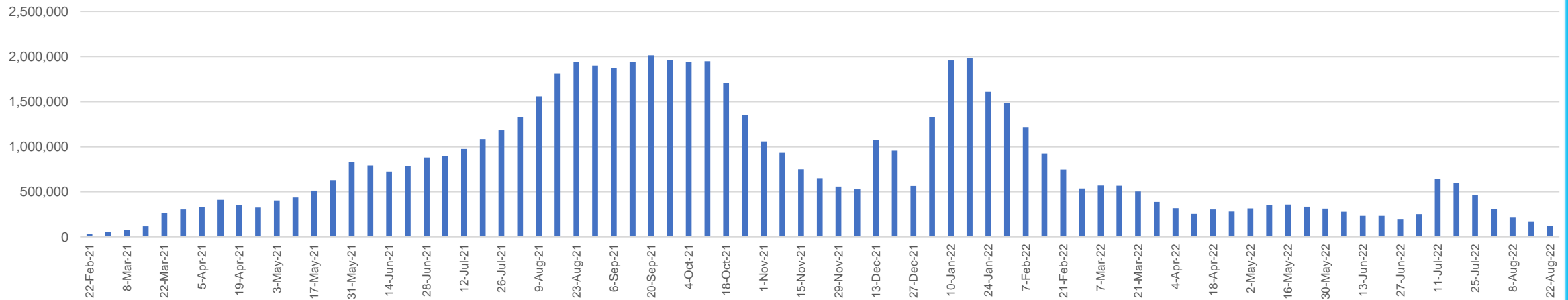
Doses Reported



Doses by administration month and vaccine type



Doses Administered by Week



*Sourced from the Australian Immunisation Register.

Data as at:
28 Aug 2022
Updated weekly

Doses by age and jurisdiction

	AUS	ACT	NSW	NT	QLD	SA	TAS	VIC	WA
5 to 11 - dose 1	1,180,902	31,477	353,826	12,774	203,490	82,538	28,057	320,811	137,815
5 to 11 - dose 2	924,016	27,704	285,003	8,845	153,283	65,403	23,299	250,980	104,357
5 to 11 - population	2,276,638	39,789	716,460	24,750	478,731	148,816	45,033	578,499	244,154
5 to 11 % with dose 1	51.87%	79.11%	49.39%	51.61%	42.51%	55.46%	62.30%	55.46%	56.45%
5 to 11 % with dose 2	40.59%	69.63%	39.78%	35.74%	32.02%	43.95%	51.74%	43.38%	42.74%
12 to 15 - dose 1	1,040,742	20,182	319,669	10,588	203,161	67,538	22,512	271,638	114,585
12 to 15 - dose 2	982,959	19,614	305,193	9,513	189,269	63,737	21,385	259,233	105,932
12 to 15 - population	1,243,990	19,693	390,330	13,060	270,146	82,747	26,308	308,611	132,869
12 to 15 % with dose 1	83.66%	>99%	81.90%	81.07%	75.20%	81.62%	85.57%	88.02%	86.24%
12 to 15 % with dose 2	79.02%	>99%	78.19%	72.84%	70.06%	77.03%	81.29%	84.00%	79.73%
16 and over - dose 1	20,200,733	354,837	6,365,509	173,124	3,890,422	1,384,685	447,137	5,193,940	2,108,340
16 and over - dose 2	19,853,167	348,820	6,262,761	168,410	3,825,835	1,354,892	438,161	5,112,090	2,076,475
16 and over - dose 3	14,200,207	279,100	4,346,170	132,625	2,471,949	1,020,425	324,685	3,768,932	1,723,189
16 and over - population	20,619,959	344,037	6,565,651	190,571	4,112,707	1,440,400	440,172	5,407,574	2,114,978
16 and over % with dose 1	97.97%	>99%	96.95%	90.84%	94.60%	96.13%	>99%	96.05%	>99%
16 and over % with dose 2	96.28%	>99%	95.39%	88.37%	93.02%	94.06%	>99%	94.54%	98.18%
16 and over % with dose 3	68.87%	81.12%	66.20%	69.59%	60.11%	70.84%	73.76%	69.70%	81.48%
30 and over - dose 1	15,809,509	274,525	5,009,068	128,036	3,042,167	1,102,505	355,488	4,059,290	1,651,940
30 and over - dose 2	15,577,695	270,504	4,938,798	125,404	3,000,177	1,083,732	349,732	4,003,434	1,630,773
30 and over - dose 3	12,032,449	228,833	3,719,139	104,194	2,154,687	873,998	280,672	3,153,038	1,418,860
30 and over - dose 4	4,628,140	95,427	1,485,490	22,393	899,444	363,421	125,126	1,143,616	467,367
30 and over - population	15,805,337	258,148	5,042,108	140,343	3,148,826	1,126,262	349,703	4,096,873	1,639,833
30 and over % with dose 1	>99%	>99%	>99%	91.23%	96.61%	97.89%	>99%	>99%	>99%
30 and over % with dose 2	98.56%	>99%	97.95%	89.36%	95.28%	96.22%	>99%	97.72%	>99%
30 and over % with dose 3	76.13%	88.64%	73.76%	74.24%	68.43%	77.60%	80.26%	76.96%	86.52%
30 and over % with dose 4	29.28%	36.97%	29.46%	15.96%	28.56%	32.27%	35.78%	27.91%	28.50%
65 and over - dose 1	4,481,271	65,560	1,451,713	20,733	869,135	358,161	117,668	1,117,782	437,535
65 and over - dose 2	4,420,890	64,540	1,432,198	20,391	859,007	353,629	116,351	1,102,015	432,623
65 and over - dose 3	3,998,891	60,279	1,283,100	18,195	777,682	325,993	107,919	989,346	404,498
65 and over - dose 4	2,846,624	47,789	909,191	10,648	570,089	239,169	80,883	686,509	284,607
65 and over - population	4,192,882	57,745	1,366,640	20,994	831,881	338,903	110,799	1,057,498	407,530
65 and over % with dose 1	>99%	>99%	>99%	98.76%	>99%	>99%	>99%	>99%	>99%
65 and over % with dose 2	>99%	>99%	>99%	97.13%	>99%	>99%	>99%	>99%	>99%
65 and over % with dose 3	95.37%	>99%	93.89%	86.67%	93.48%	96.19%	97.40%	93.56%	>99%
65 and over % with dose 4	67.89%	82.76%	66.53%	50.72%	68.53%	70.57%	73.00%	64.92%	69.84%

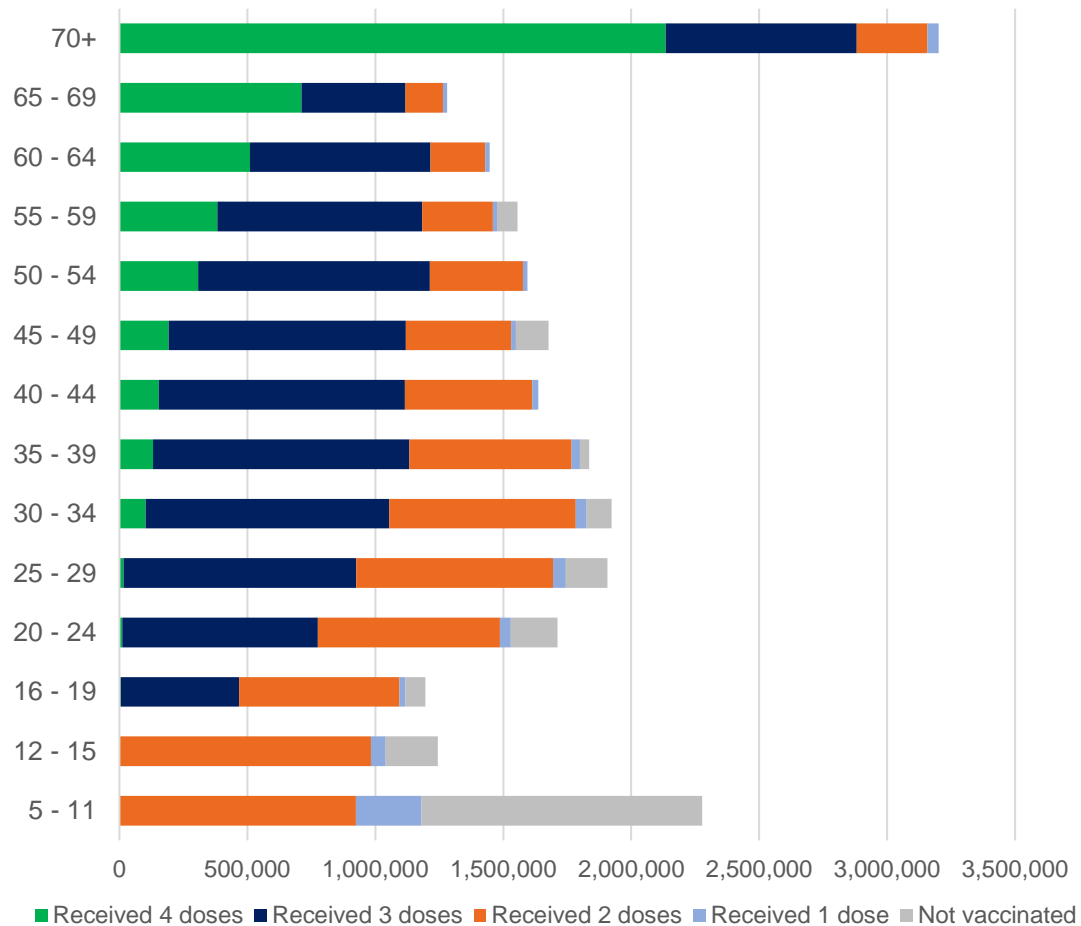
*National population will not equal sum of listed jurisdictions due to a small number of people counted in national population residing in some 'other' territories. Sum of state doses will not add to national total as some records are unable to be geocoded to a State or Territory.

Doses sourced from Australian Immunisation Register, population from ABS ERP June 2020

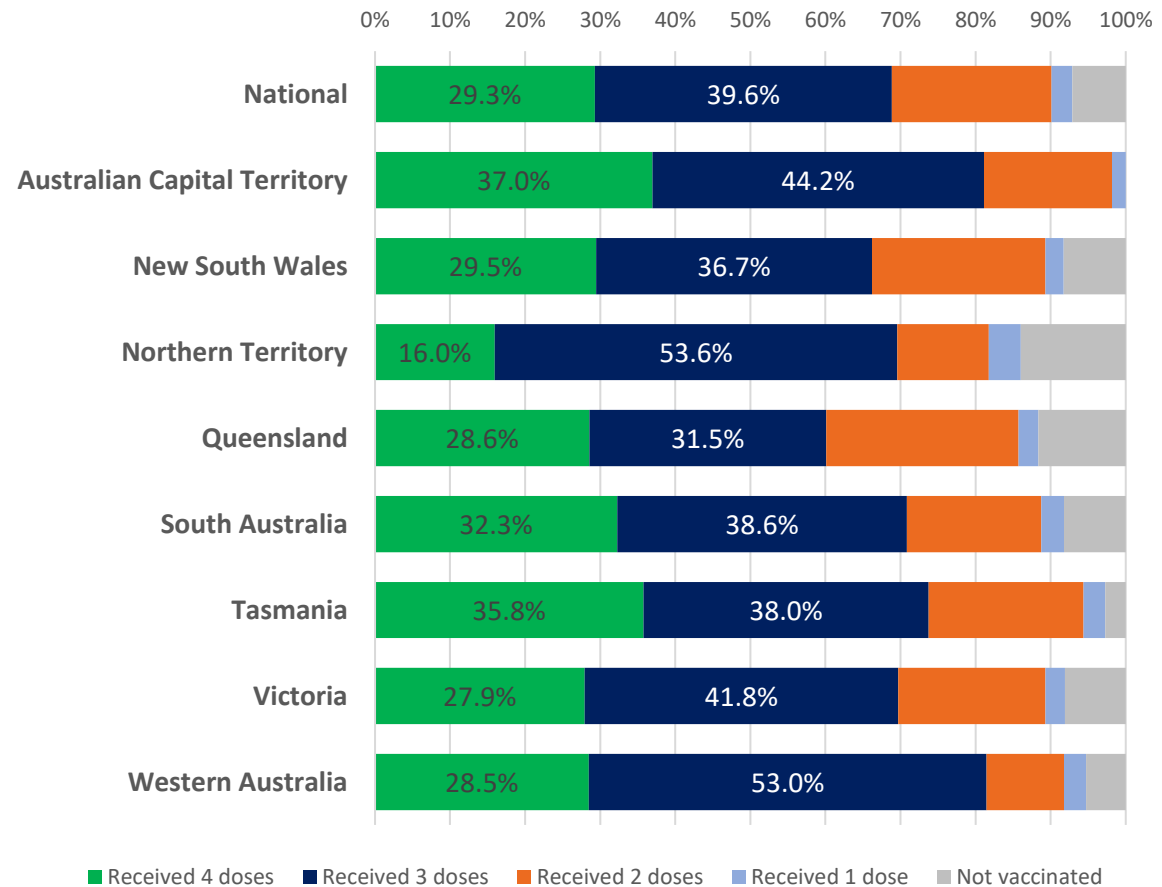
Data as at:
28 Aug 2022
Updated weekly

Vaccinations by age and location

Number of people vaccinated by age

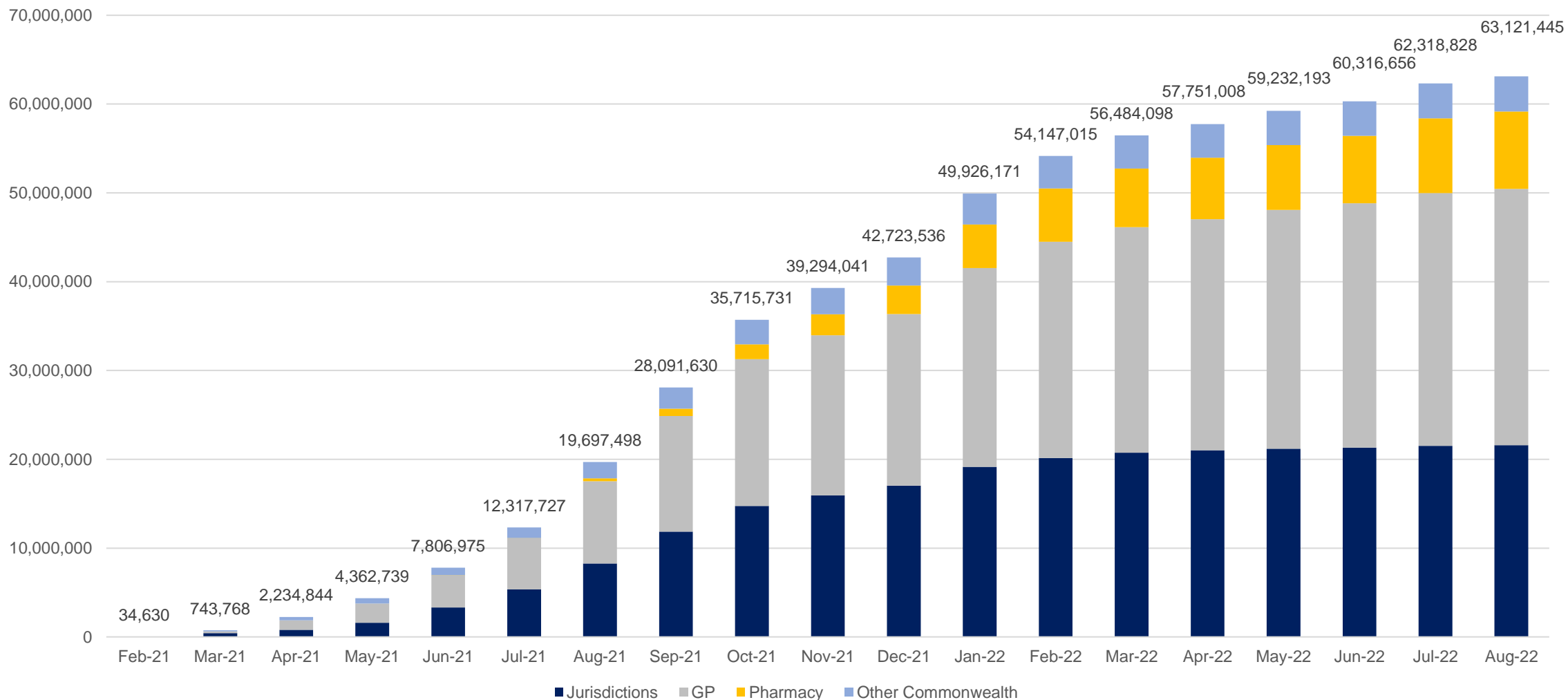


Individuals vaccinated by residential location



Data as at:
28 Aug 2022
Updated weekly

Cumulative doses administered by channel



Source: Australian Immunisation Register

Commonwealth primary care

Data as at:
28 Aug 2022
Updated weekly

Australia's COVID-19
Vaccine Program



Primary care vaccine administration sites

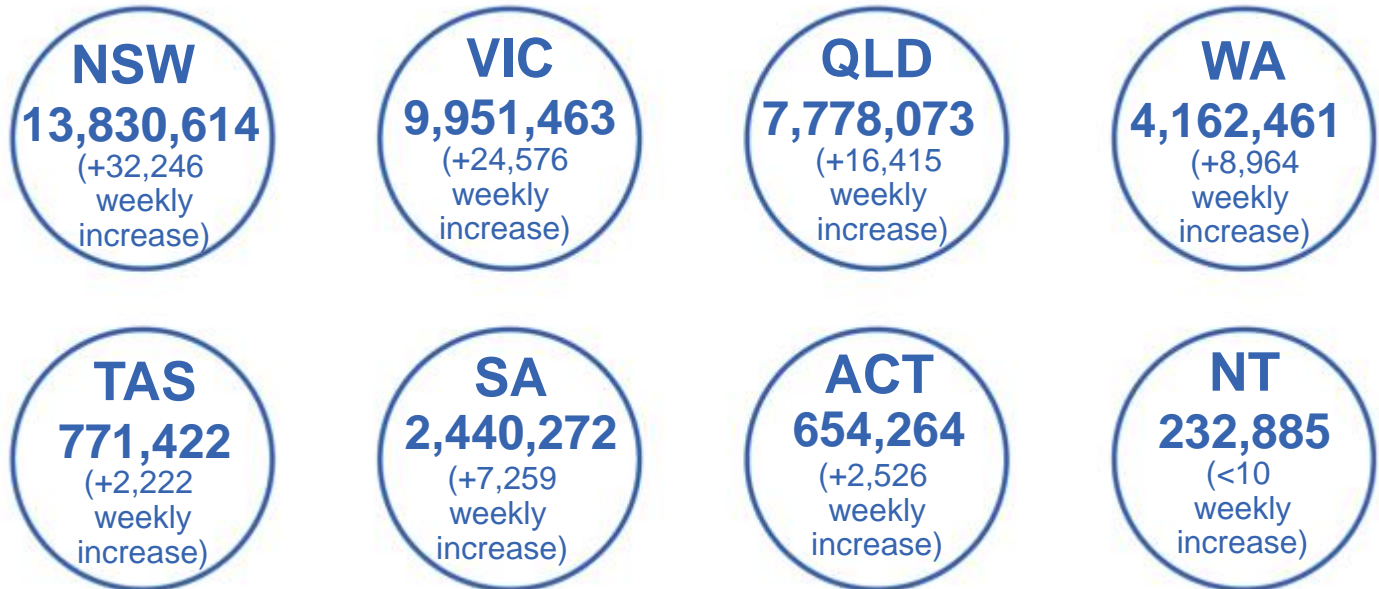
5,681	115	178	3,619
GPs	CVCs	ACCHS	Pharmacies



40,184,809 total vaccine doses administered
primary care settings as at 28 August
+102,789 recorded in the last week

Primary care vaccinations by provider type

	Doses administered	7 day increase
General Practice* includes other Commonwealth	31,482,304	61,749
Pharmacy	8,702,505	41,040



363,355

doses administered to persons residing in other territories or with missing residential information

*General practice includes Commonwealth Vaccination Clinics, Aboriginal Community Health Centres, Royal Flying Doctor Service and other Commonwealth vaccination facilities

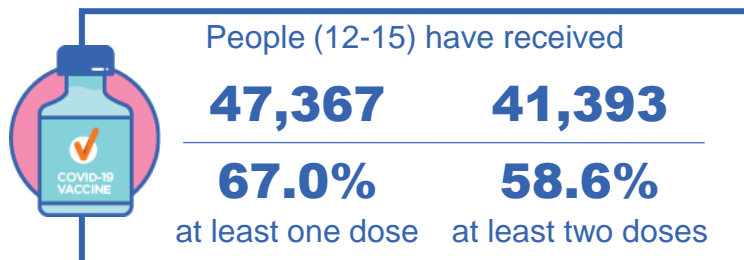
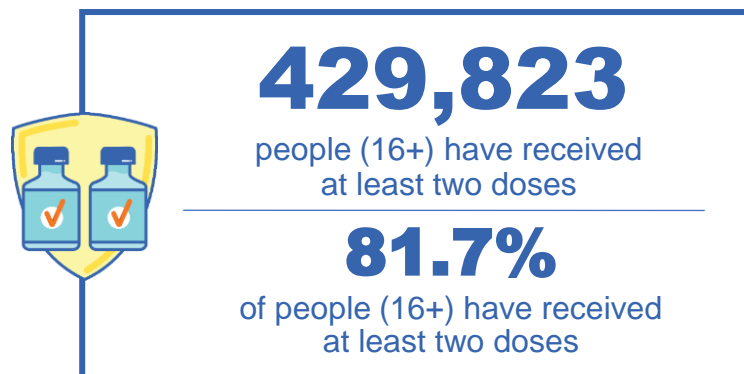
Source: Australian Immunisation Register

Aboriginal and Torres Strait Islander peoples

Number of people vaccinated

Data as at:
28 Aug 2022
Updated weekly

Australia's COVID-19
Vaccine Program



178 Aboriginal community controlled health services (ACCHS) sites

0#	50	27	44	12	3	21	21
ACT	NSW	NT	QLD	SA	TAS	VIC	WA

Medicare Address State ^{##}	Individuals Dose 1 % (16+)	Individuals Dose 2 % (16+)	Individuals Dose 3 % Eligible (aged 16+)	Individuals Dose 4 % Eligible (aged 30+)
Australian Capital Territory	91.8%	89.6%	64.5%	37.3%
New South Wales	87.5%	85.5%	52.2%	35.5%
Northern Territory	89.7%	85.5%	68.9%	21.2%
Queensland	82.0%	78.3%	48.5%	34.6%
South Australia	80.9%	75.4%	60.3%	35.0%
Tasmania	89.0%	86.5%	60.1%	38.4%
Victoria	90.5%	88.5%	61.7%	33.3%
Western Australia	86.9%	81.4%	65.3%	25.2%
Unknown/Other Territories	72.1%	67.0%	48.8%	20.1%
Totals	85.1%	81.7%	55.6%	31.7%

Source: Australian Immunisation Register

*Identifying as Aboriginal and Torres Strait Islander is optional and the estimated population may be under reported.

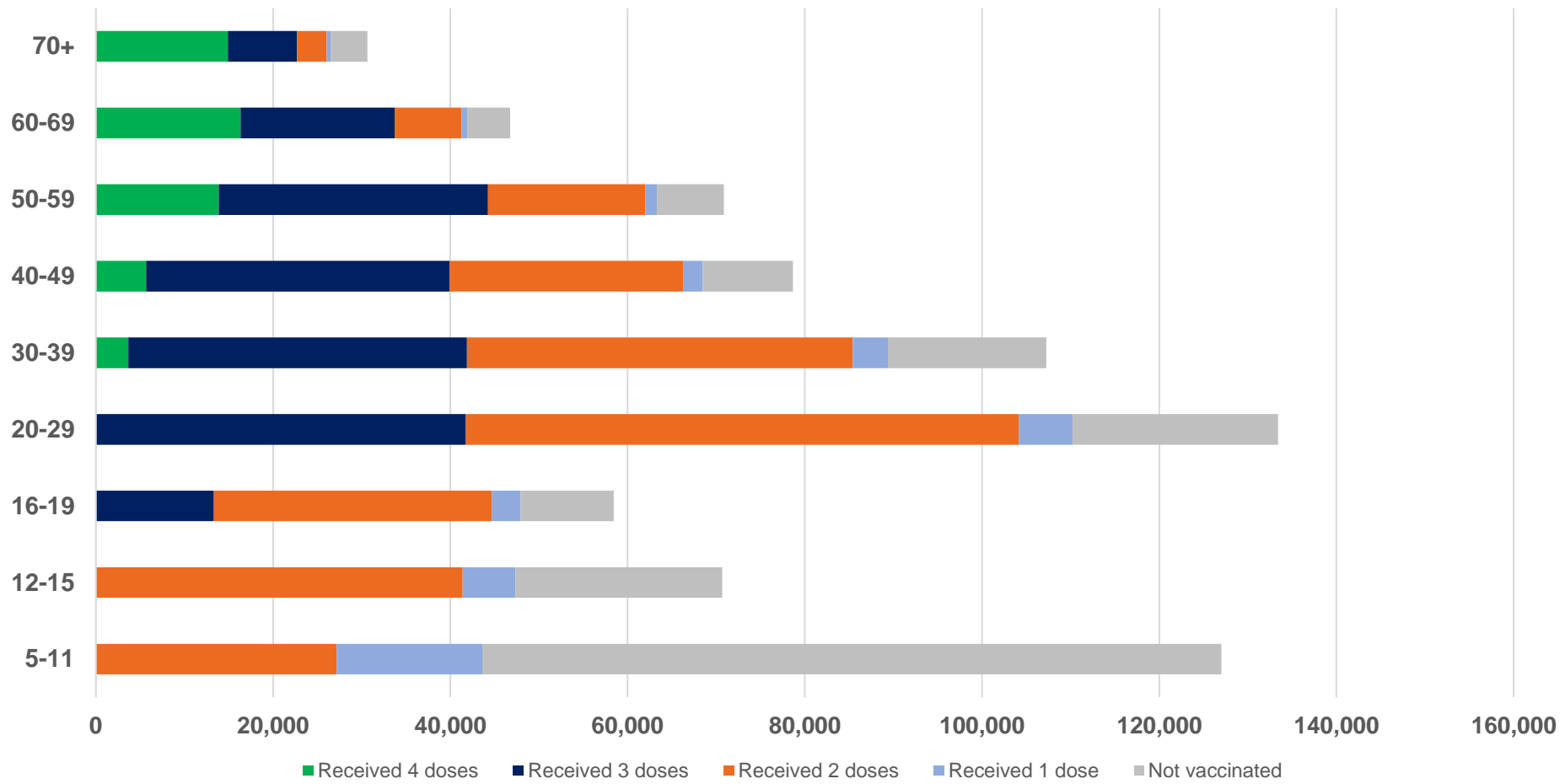
**Includes all Aboriginal and Torres Strait Islander peoples who have received a vaccination, not limited to those administered in an ACCHS setting.

#ACCHS in the ACT are currently operating as Commonwealth Vaccine Clinics so not included to avoid double counting.

##The above table includes all identified Aboriginal and Torres Strait Islander people who are aged 16 and above by their state of residence.

Aboriginal and Torres Strait Islander peoples Number of people vaccinated by age

Data as at:
28 Aug 2022
Updated weekly



Source: Australian Immunisation Register

Individuals with Culturally and Linguistically Diverse (CALD) backgrounds data

Data as at:
14 Aug 2022
Updated weekly

Australia's COVID-19
Vaccine Program

People over the age of 16

CALD population *	Total number of individuals in cohort	% People with at least one dose	% People who received two doses	% of eligible people who received three or more doses
General population	20,619,959	>95.0%	>95.0%	71.5%
People born overseas	4,454,014	94.5%	93.9%	72.6%
Speaks a language other than English at home	4,110,252	94.1%	93.4%	68.6%

	General population			Born Overseas			Speaks a language other than English at home		
	% with at least one dose	% who received two doses	% of eligible people who received three or more doses	% with at least one dose	% who received two doses	% of eligible people who received three or more doses	% with at least one dose	% who received two doses	% of eligible people who received three or more doses
ACT	>95.0%	>95.0%	80.0%	>95.0%	>95.0%	78.4%	>95.0%	>95.0%	75.8%
NSW	>95.0%	>95.0%	69.3%	94.8%	94.3%	69.9%	94.1%	93.4%	65.3%
NT	91.0%	88.6%	78.7%	>95.0%	94.7%	87.8%	94.2%	93.7%	86.5%
Qld	94.5%	93.0%	64.6%	92.1%	91.4%	67.0%	92.4%	91.6%	63.5%
SA	>95.0%	94.0%	75.4%	92.7%	91.7%	74.7%	91.7%	90.5%	71.1%
Tas	>95.0%	>95.0%	74.1%	93.7%	93.0%	75.8%	93.7%	93.0%	71.9%
Vic	>95.0%	94.5%	73.7%	>95.0%	94.7%	72.9%	94.6%	94.0%	69.1%
WA	>95.0%	>95.0%	83.1%	>95.0%	94.5%	85.3%	>95.0%	94.6%	83.4%

*Individuals with Culturally and Linguistically Diverse (CALD) backgrounds are as reported in the 2021 Census, excluding those who have since departed Australia; those born in the UK, Ireland or NZ; and Aboriginal and/or Torres Strait Islander peoples. There is overlap across CALD cohorts where individuals may have reported they had more than one CALD characteristic in the 2021 Census.

Small negative changes may appear when compared with the previous report due to perturbation, in particular for small population groups.

Source: Australian Immunisation Register linked to the Multi-Agency Data Integration Project (Census 2021 characteristics)

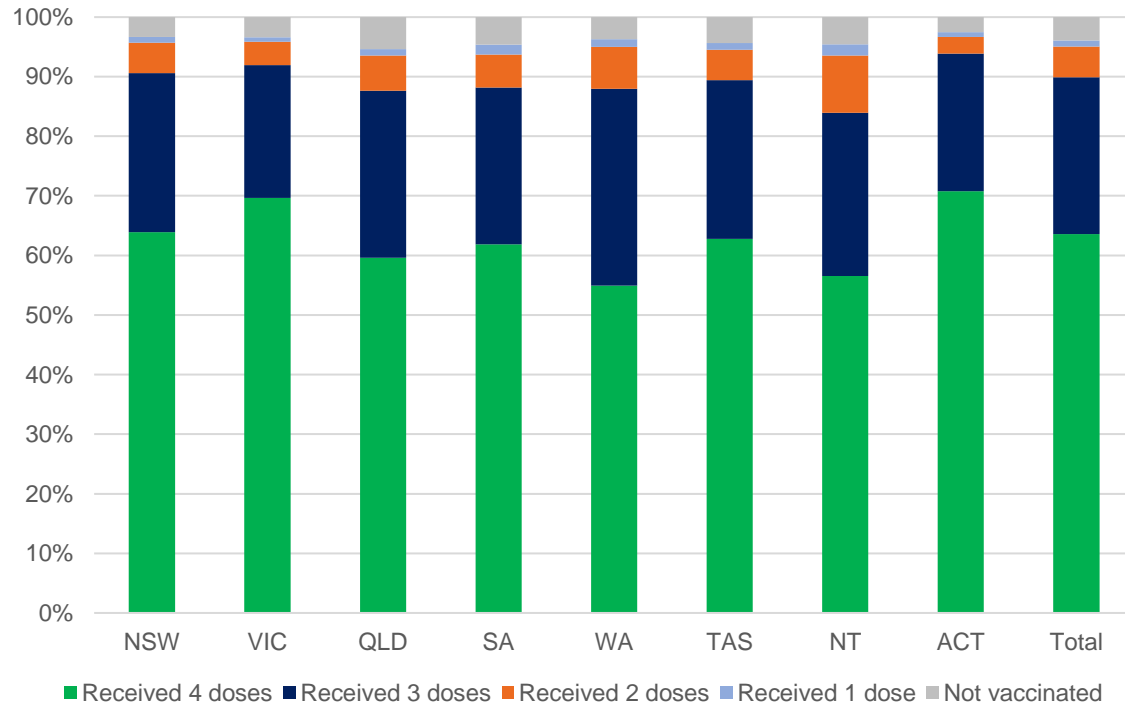
Data as at:
25 Aug 2022
Updated weekly

Residential aged care vaccination rollout

Residential aged care facilities status

171,884	170,074	160,856	113,751
People with at least one dose	People with at least two doses	People with three doses	People with four doses

Aged care resident vaccinations*



Aged care worker vaccinations

Jurisdictions	Total workers with at least one dose	Workers with at least two doses	% Workers with at least one dose	% Workers with at least two doses
NSW	78,660	78,525	99.9%	99.7%
VIC	71,532	71,528	100.0%	100.0%
QLD	48,954	48,943	100.0%	100.0%
SA	26,874	26,865	100.0%	100.0%
WA	24,773	24,766	100.0%	100.0%
TAS	7,512	7,512	100.0%	100.0%
NT	904	904	100.0%	100.0%
ACT	2,952	2,952	100.0%	100.0%
Total	262,161	261,995	100.0%	99.9%

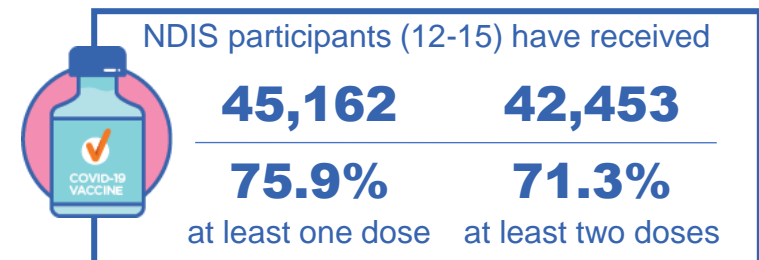
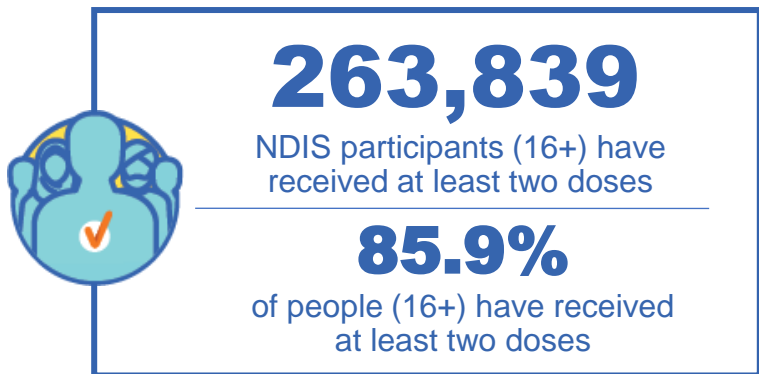
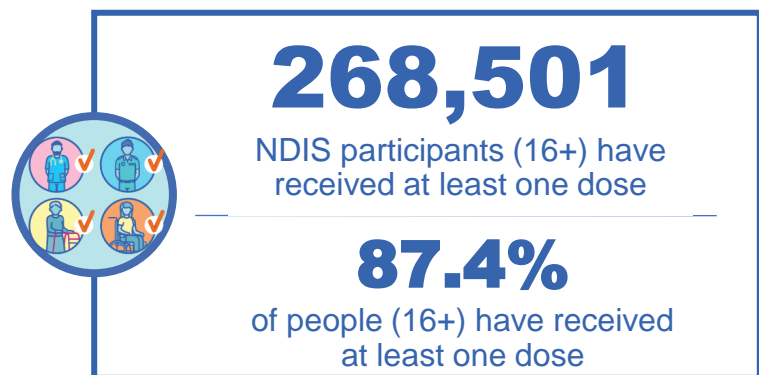
Source: Residential aged care provider self-reported COVID-19 vaccination information and matched AIR data of residents in permanent residential RACFs.

*Self-reported status updates are provided by facilities at least once per week. Reporting is updated Monday to Friday to encompass different facility updates being made on different days.

National Disability Insurance Scheme (NDIS) reported vaccinations

Data as at:
25 Aug 2022
Updated weekly

Australia's COVID-19
Vaccine Program



NDIS participant vaccinations

	% People aged 16+ with at least one dose	% People aged 16+ with at least two doses	% People aged 16+ with three doses	% People aged 16+ with four doses
ACT	89.5%	88.4%	83.7%	34.2%
NSW	88.0%	86.6%	75.3%	32.5%
NT	78.6%	76.2%	79.1%	24.8%
QLD	85.6%	84.0%	71.6%	27.3%
SA	85.3%	83.4%	78.3%	27.1%
TAS	87.7%	85.8%	76.3%	28.4%
VIC	88.6%	87.2%	77.7%	29.8%
WA	88.8%	87.2%	82.2%	30.0%
National	87.4%	85.9%	76.3%	29.9%

Source: Linkage between National Disability Insurance Agency data and the Australian Immunisation Register. Total NDIS participant numbers as at 01 August. Australian Immunisation Register data as at 24 August. Includes all participants regardless of residence type.

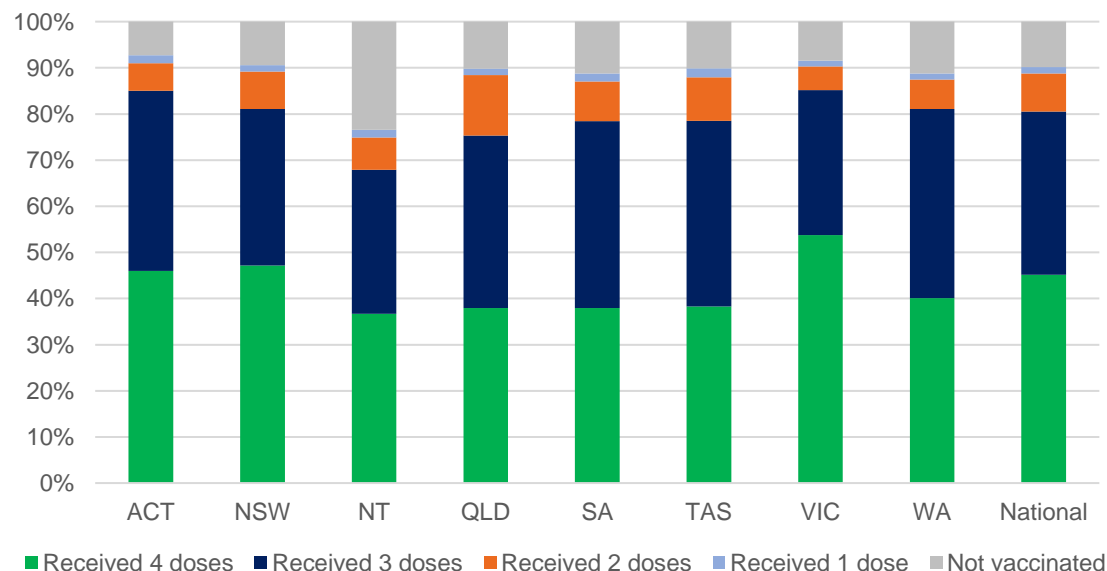
National Disability Insurance Scheme (NDIS) reported vaccinations

Data as at:
25 Aug 2022
Updated weekly

Australia's COVID-19
Vaccine Program

NATIONAL	People with at least one dose	People with at least two doses	Total number of individuals in cohort	% People with at least one dose	% People with at least two doses
NDIS participants living in disability accommodation	21,445	21,111	23,726	90.4%	89.0%

NDIS participants in disability and aged care accommodation



Source: Linkage between National Disability Insurance Agency data and the Australian Immunisation Register. Includes participants residing in disability accommodation only.
Source: Total NDIS participant numbers as at 01 August. Participant data as at 23 August. Australian Immunisation Register data as at 24 August. Worker data as at 24 August.

NDIS workforce vaccinations

	NDIS workers with at least one dose	NDIS workers with at least two doses	% NDIS workers with at least one dose	% NDIS workers with at least two doses
NSW	128,429	123,832	98.4%	94.9%
VIC	118,024	115,161	97.9%	95.5%
QLD	71,565	70,740	98.0%	96.8%
WA	34,457	33,072	92.1%	88.4%
SA	35,869	34,430	98.7%	94.8%
TAS	12,492	12,166	98.5%	95.9%
ACT	12,334	12,309	99.8%	99.6%
NT	3,645	3,498	99.6%	95.5%
TOTAL	416,815	405,208	97.7%	95.0%

Source: the NDIS Commission has established a requirement for registered NDIS providers who provide intensive disability support services to report on the vaccination status of workers they employ, or otherwise engage, to deliver NDIS-funded supports and services, and who are required to be vaccinated in accordance with in-force state and territory public health orders. The statistics reflect data reported to the NDIS Commission by registered NDIS providers and should be considered indicative and subject to change

Note: Some registered NDIS providers are yet to report on the vaccination status of their workforce. The NDIS Commission is working with those providers around reporting requirements.

Remaining workers not included include those exempt from vaccination requirements, workers whose vaccination status is not yet verified by the provider (such as workers on leave) and provider reporting anomalies.