



Australian Government

Department of Health and Aged Care

COVID-19 Vaccine Roll-out

24 August 2022

Data as at:
23 Aug 2022

Total vaccine doses



63,046,441 total vaccine doses administered nationally as at 23 August

+23,131 recorded in the last 24 hours



20,195,244

people (16+) have received at least one dose (>95%)

19,847,809

people (16+) have received at least two doses (>95%)



14,188,206

people (16+) have received three doses



4,605,774

people (16+) have received four doses

NSW
19,597,369
(+7,194 daily increase)

VIC
16,472,189
(+5,956 daily increase)

QLD
11,955,310
(+4,384 daily increase)

WA
6,896,362
(+2,083 daily increase)

TAS
1,438,065
(+592 daily increase)

SA
4,403,340
(+1,595 daily increase)

ACT
1,671,157
(+962 daily increase)

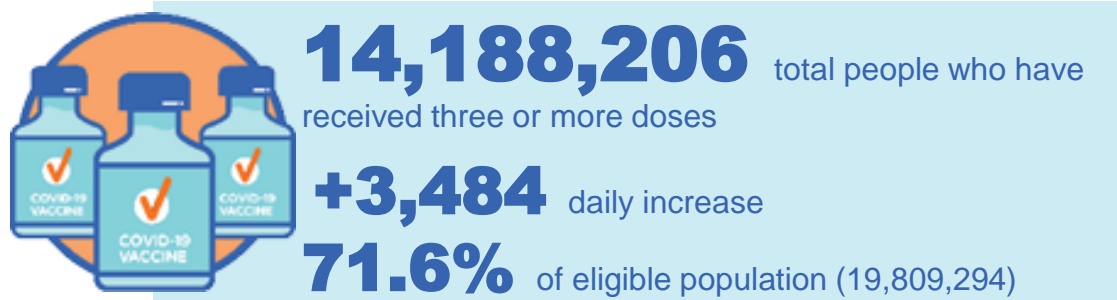
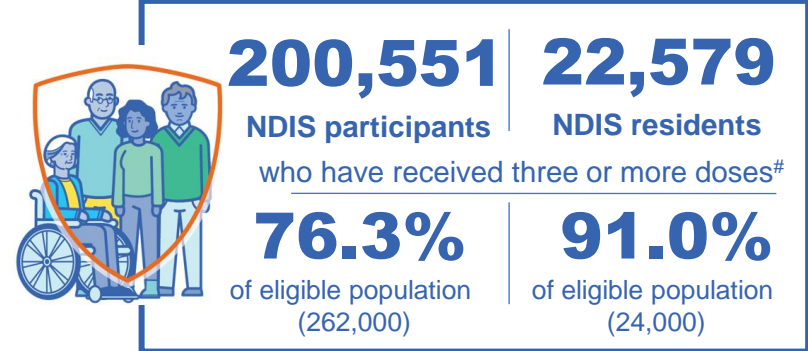
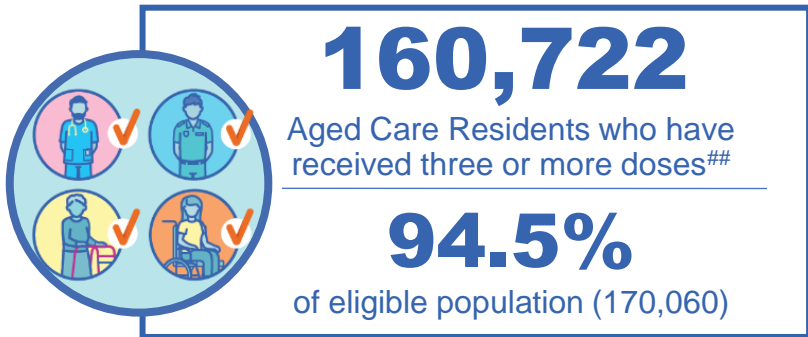
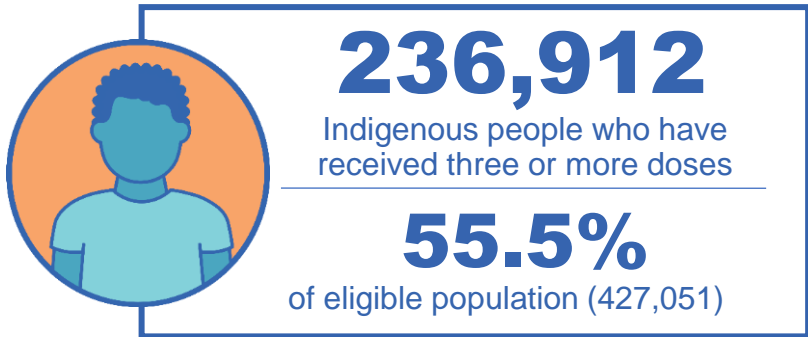
NT
612,649
(+365 daily increase)

*Administration state breakdown indicates state in which a vaccine was administered

Source: Australian Immunisation Register

Data as at: 23 Aug 2022

Third Doses



	Number of People	Daily Increase	% of Eligible
NSW	4,342,039	1,178	69.5%
VIC	3,766,527	694	73.8%
QLD	2,469,990	592	64.7%
WA	1,722,354	294	83.1%
SA	1,019,498	311	75.5%
TAS	324,446	67	74.2%
ACT	278,942	47	80.1%
NT	132,693	28	78.9%

131,717


doses administered to persons residing in other territories or with missing residential information

*People may belong to multiple groups and could be represented in the above breakdowns multiple times.
NDIS participants data as at 21 August 2022. ## Aged Care Residents data as at 22 August 2022.

Source: Australian Immunisation Register

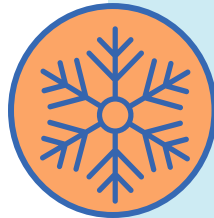
Data as at:
23 Aug 2022

Fourth Doses



112,854
Aged Care Residents who have received four or more doses#

81.4%
of eligible population (138,580)



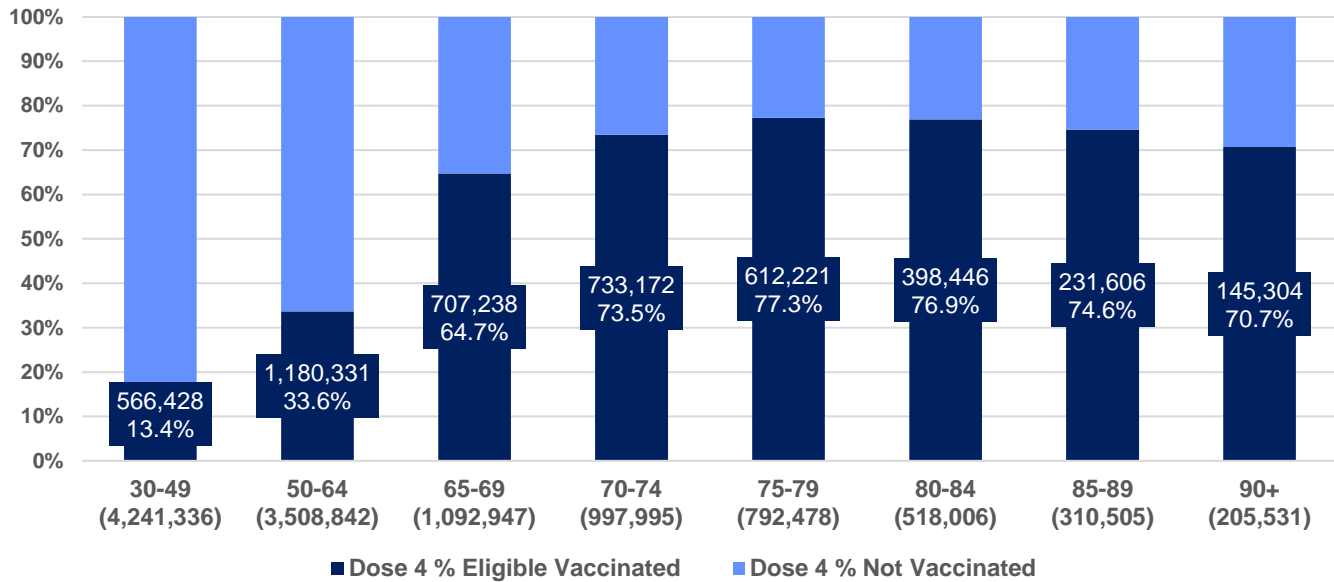
4,605,774
+17,180
39.2%
2,827,987
72.2%

total people (16+) who have received four doses
daily increase (16+)

of eligible population (30+) (11,667,640)

total people (65+) who have received four doses
of eligible population (65+) (3,917,462)

% Individuals eligible vaccinated by current age



	Number of People 16+	Daily Increase
ACT	95,073	366
NSW	1,479,760	5,249
NT	22,270	232
QLD	895,740	3,129
SA	361,043	1,163
TAS	124,392	476
VIC	1,138,069	4,663
WA	463,844	1,716

25,583 doses administered to persons residing in other territories or with missing residential information

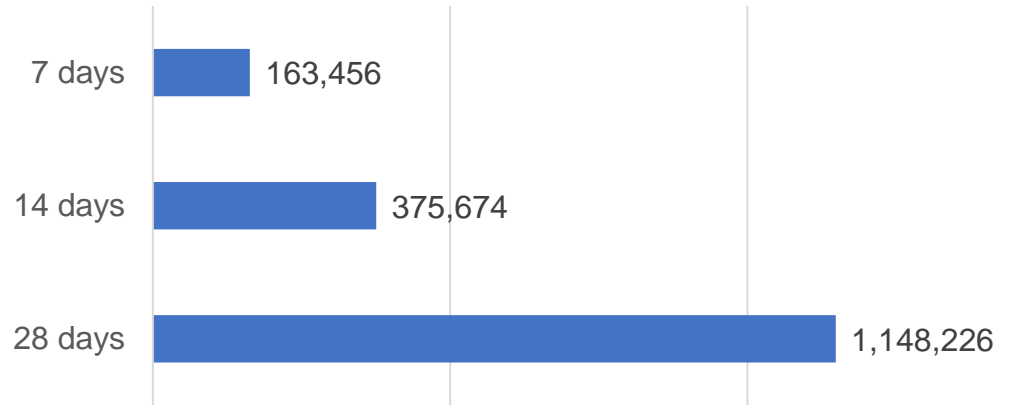
*People become eligible for a fourth dose three months after their third dose. Individuals may belong to multiple groups and could be represented in the above multiple times.
#Aged Care Residents data as at 21 August 2022.

Source: Australian Immunisation Register

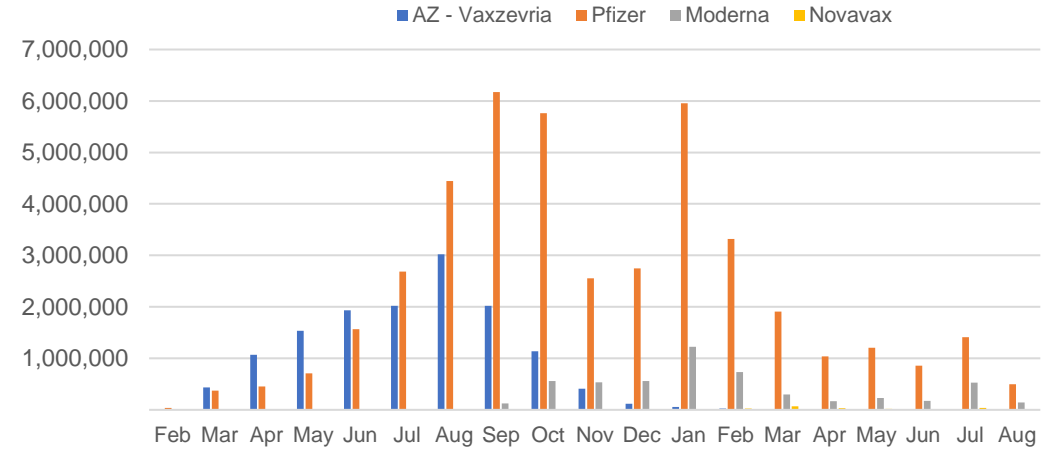
Vaccine milestone charts

Data as at:
21 Aug 2022
Updated weekly

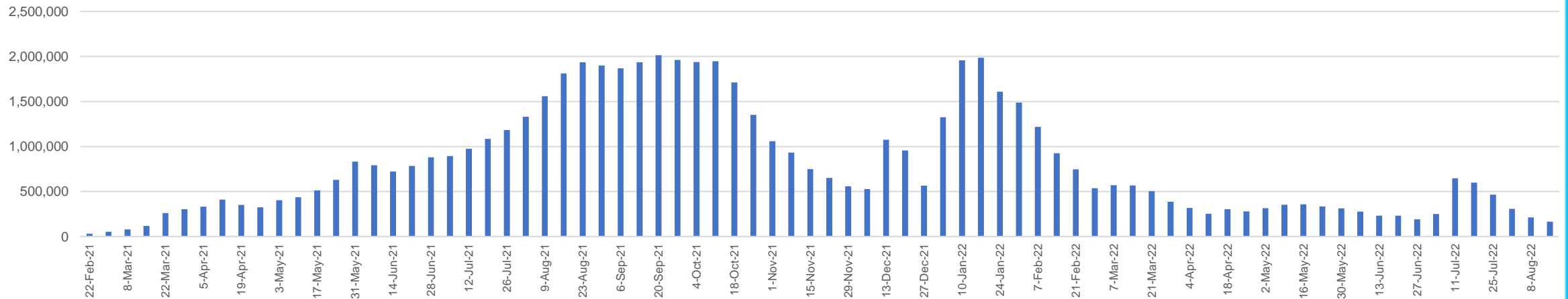
Doses Reported



Doses by administration month and vaccine type



Doses Administered by Week



*Sourced from the Australian Immunisation Register.

Data as at:
21 Aug 2022
Updated weekly

Doses by age and jurisdiction

	AUS	ACT	NSW	NT	QLD	SA	TAS	VIC	WA
5 to 11 - dose 1	1,183,444	31,553	354,682	12,852	204,176	82,732	28,126	321,573	138,180
5 to 11 - dose 2	924,564	27,730	285,164	8,841	153,476	65,455	23,328	251,140	104,431
5 to 11 - population	2,276,638	39,789	716,460	24,750	478,731	148,816	45,033	578,499	244,154
5 to 11 % with dose 1	51.98%	79.30%	49.50%	51.93%	42.65%	55.59%	62.46%	55.59%	56.60%
5 to 11 % with dose 2	40.61%	69.69%	39.80%	35.72%	32.06%	43.98%	51.80%	43.41%	42.77%
12 to 15 - dose 1	1,041,775	20,165	320,234	10,631	203,514	67,627	22,564	271,999	114,646
12 to 15 - dose 2	984,299	19,603	305,783	9,561	189,665	63,846	21,433	259,670	106,002
12 to 15 - population	1,243,990	19,693	390,330	13,060	270,146	82,747	26,308	308,611	132,869
12 to 15 % with dose 1	83.74%	>99%	82.04%	81.40%	75.33%	81.73%	85.77%	88.14%	86.28%
12 to 15 % with dose 2	79.12%	>99%	78.34%	73.21%	70.21%	77.16%	81.47%	84.14%	79.78%
16 and over - dose 1	20,192,207	354,778	6,364,429	173,456	3,889,960	1,384,192	447,030	5,192,387	2,107,476
16 and over - dose 2	19,845,041	348,769	6,261,843	168,728	3,825,268	1,354,429	438,028	5,110,718	2,075,613
16 and over - dose 3	14,181,474	278,851	4,339,857	132,645	2,469,006	1,018,919	324,301	3,765,198	1,721,788
16 and over - population	20,619,959	344,037	6,565,651	190,571	4,112,707	1,440,400	440,172	5,407,574	2,114,978
16 and over % with dose 1	97.93%	>99%	96.94%	91.02%	94.58%	96.10%	>99%	96.02%	>99%
16 and over % with dose 2	96.24%	>99%	95.37%	88.54%	93.01%	94.03%	>99%	94.51%	98.14%
16 and over % with dose 3	68.78%	81.05%	66.10%	69.60%	60.03%	70.74%	73.68%	69.63%	81.41%
30 and over - dose 1	15,800,584	274,430	5,007,609	128,200	3,041,438	1,102,016	355,356	4,057,443	1,651,048
30 and over - dose 2	15,568,948	270,413	4,937,422	125,568	2,999,383	1,083,245	349,586	4,001,656	1,629,872
30 and over - dose 3	12,016,504	228,607	3,714,311	104,183	2,152,151	872,769	280,351	3,149,603	1,417,460
30 and over - dose 4	4,542,557	93,294	1,458,278	21,516	885,467	357,239	122,753	1,121,211	458,003
30 and over - population	15,805,337	258,148	5,042,108	140,343	3,148,826	1,126,262	349,703	4,096,873	1,639,833
30 and over % with dose 1	>99%	>99%	>99%	91.35%	96.59%	97.85%	>99%	>99%	>99%
30 and over % with dose 2	98.50%	>99%	97.92%	89.47%	95.25%	96.18%	>99%	97.68%	>99%
30 and over % with dose 3	76.03%	88.56%	73.67%	74.23%	68.35%	77.49%	80.17%	76.88%	86.44%
30 and over % with dose 4	28.74%	36.14%	28.92%	15.33%	28.12%	31.72%	35.10%	27.37%	27.93%
65 and over - dose 1	4,475,726	65,500	1,450,129	20,726	868,228	357,757	117,540	1,116,592	437,012
65 and over - dose 2	4,415,450	64,483	1,430,670	20,385	858,094	353,225	116,223	1,100,844	432,108
65 and over - dose 3	3,992,355	60,196	1,281,238	18,175	776,515	325,466	107,775	987,912	403,875
65 and over - dose 4	2,816,362	47,355	899,618	10,447	565,031	236,543	80,027	678,801	281,409
65 and over - population	4,192,882	57,745	1,366,640	20,994	831,881	338,903	110,799	1,057,498	407,530
65 and over % with dose 1	>99%	>99%	>99%	98.72%	>99%	>99%	>99%	>99%	>99%
65 and over % with dose 2	>99%	>99%	>99%	97.10%	>99%	>99%	>99%	>99%	>99%
65 and over % with dose 3	95.22%	>99%	93.75%	86.57%	93.34%	96.04%	97.27%	93.42%	>99%
65 and over % with dose 4	67.17%	82.01%	65.83%	49.76%	67.92%	69.80%	72.23%	64.19%	69.05%

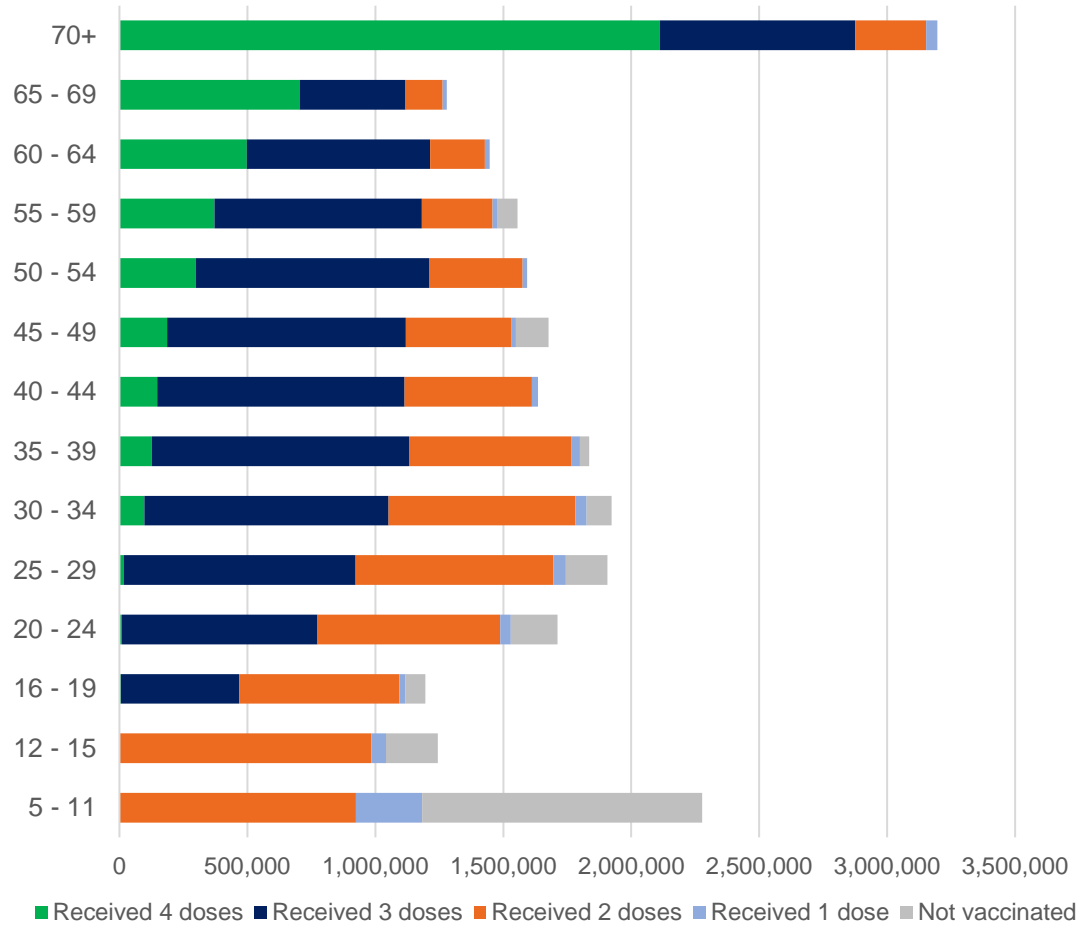
*National population will not equal sum of listed jurisdictions due to a small number of people counted in national population residing in some 'other' territories. Sum of state doses will not add to national total as some records are unable to be geocoded to a State or Territory.

Doses sourced from Australian Immunisation Register, population from ABS ERP June 2020

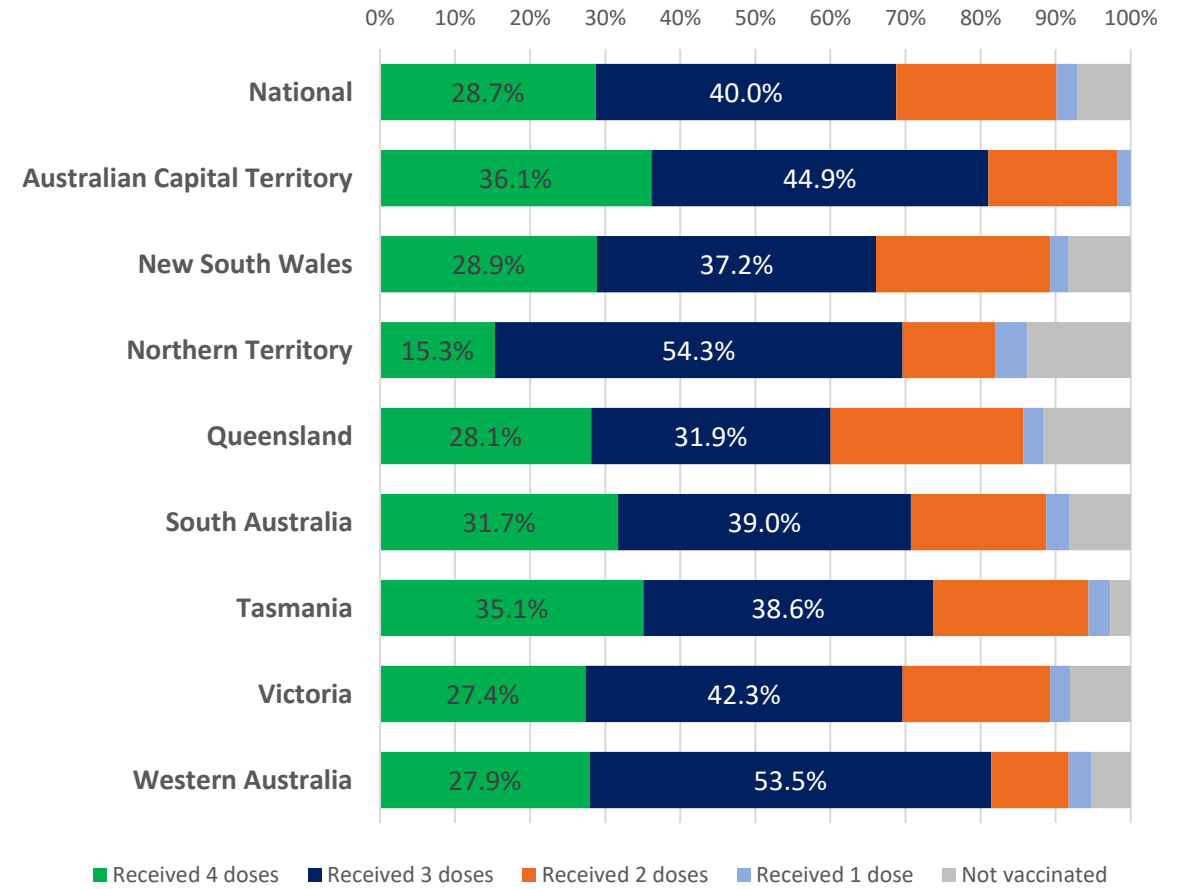
Data as at:
21 Aug 2022
Updated weekly

Vaccinations by age and location

Number of people vaccinated by age

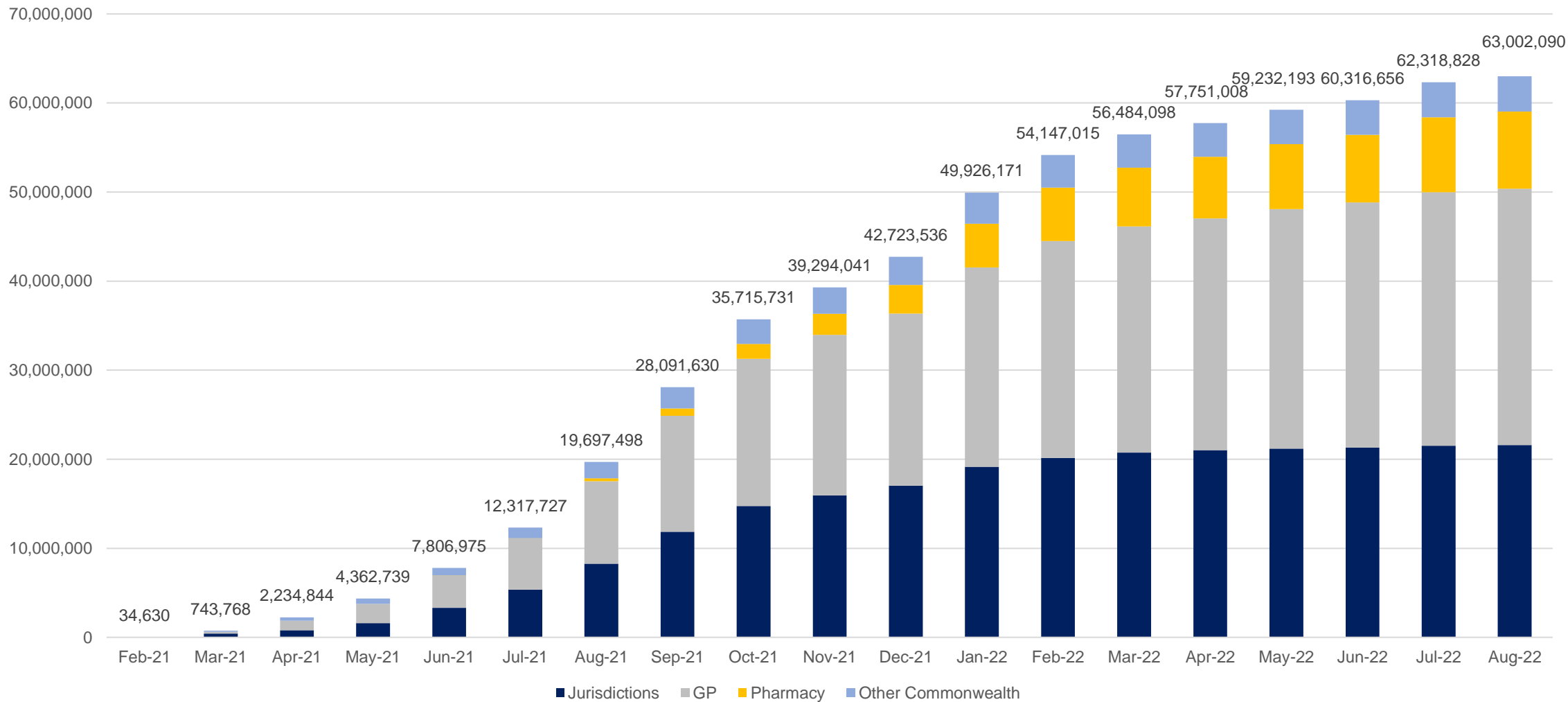


Individuals vaccinated by residential location



Data as at:
21 Aug 2022
Updated weekly

Cumulative doses administered by channel



Source: Australian Immunisation Register

Commonwealth primary care

Data as at:
21 Aug 2022
Updated weekly

Australia's COVID-19
Vaccine Program



Primary care vaccine administration sites

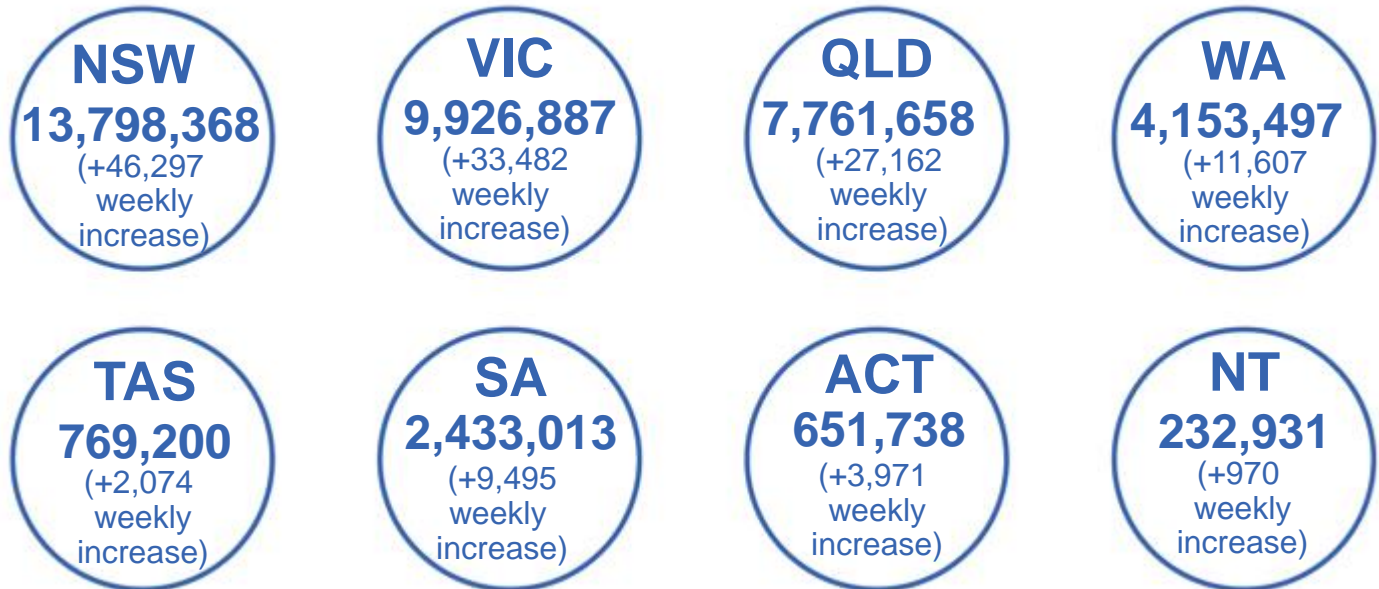
5,683	116	178	3,621
GPs	CVCs	ACCHS	Pharmacies



40,082,020 total vaccine doses administered
primary care settings as at 21 August
+141,212 recorded in the last week

Primary care vaccinations by provider type

	Doses administered	7 day increase
General Practice* includes other Commonwealth	31,420,555	86,095
Pharmacy	8,661,465	55,117



354,728 doses administered to persons residing in other territories or with missing residential information

*General practice includes Commonwealth Vaccination Clinics, Aboriginal Community Health Centres, Royal Flying Doctor Service and other Commonwealth vaccination facilities

Source: Australian Immunisation Register

Aboriginal and Torres Strait Islander peoples

Number of people vaccinated

Data as at:
21 Aug 2022
Updated weekly

Australia's COVID-19
Vaccine Program



447,378

people (16+) have received
at least one dose

85.1%

of people (16+) have received
at least one dose



429,364

people (16+) have received
at least two doses

81.7%

of people (16+) have received
at least two doses



People (12-15) have received

47,404

41,454

67.1%

58.7%

at least one dose

at least two doses

178

Aboriginal community controlled health services (ACCHS) sites

0#	50	27	44	12	3	21	21
ACT	NSW	NT	QLD	SA	TAS	VIC	WA

Medicare Address State ^{##}	Individuals Dose 1 % (16+)	Individuals Dose 2 % (16+)	Individuals Dose 3 % Eligible (aged 16+)	Individuals Dose 4 % Eligible (aged 30+)
Australian Capital Territory	91.8%	89.6%	64.3%	36.8%
New South Wales	87.4%	85.5%	52.0%	34.9%
Northern Territory	89.8%	85.6%	68.6%	20.5%
Queensland	82.0%	78.3%	48.4%	34.0%
South Australia	80.9%	75.4%	60.1%	34.3%
Tasmania	89.0%	86.4%	60.0%	37.6%
Victoria	90.5%	88.5%	61.6%	32.6%
Western Australia	86.9%	81.3%	65.0%	24.5%
Unknown/Other Territories	71.9%	66.7%	48.7%	19.5%
Totals	85.1%	81.7%	55.4%	31.1%

Source: Australian Immunisation Register

*Identifying as Aboriginal and Torres Strait Islander is optional and the estimated population may be under reported.

**Includes all Aboriginal and Torres Strait Islander peoples who have received a vaccination, not limited to those administered in an ACCHS setting.

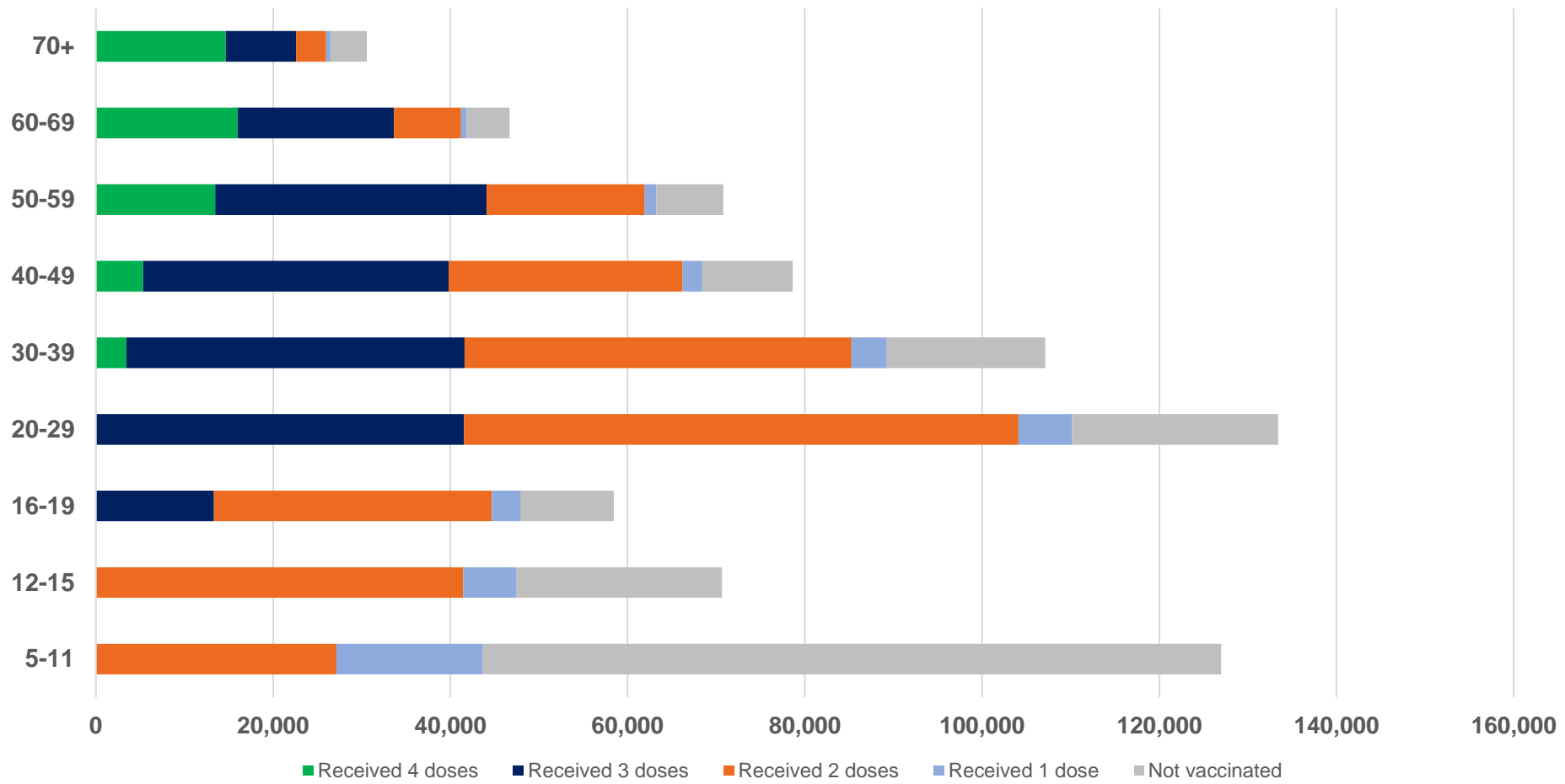
#ACCHS in the ACT are currently operating as Commonwealth Vaccine Clinics so not included to avoid double counting.

##The above table includes all identified Aboriginal and Torres Strait Islander people who are aged 16 and above by their state of residence.

Aboriginal and Torres Strait Islander peoples

Number of people vaccinated by age

Data as at:
21 Aug 2022
Updated weekly



Source: Australian Immunisation Register

Individuals with Culturally and Linguistically Diverse (CALD) backgrounds data

Data as at:
7 Aug 2022
Updated weekly

Australia's COVID-19
Vaccine Program

People over the age of 16

CALD population *	Total number of individuals in cohort	% People with at least one dose	% People who received two doses	% of eligible people who received three or more doses
General population	20,619,959	>95.0%	>95.0%	71.4%
People born overseas	4,454,014	94.5%	93.9%	72.5%
Speaks a language other than English at home	4,110,252	94.1%	93.4%	68.4%

	General population			Born Overseas			Speaks a language other than English at home		
	% with at least one dose	% who received two doses	% of eligible people who received three or more doses	% with at least one dose	% who received two doses	% of eligible people who received three or more doses	% with at least one dose	% who received two doses	% of eligible people who received three or more doses
ACT	>95.0%	>95.0%	79.9%	>95.0%	>95.0%	78.3%	>95.0%	>95.0%	75.7%
NSW	>95.0%	>95.0%	69.2%	94.8%	94.3%	69.8%	94.1%	93.4%	65.1%
NT	91.2%	88.8%	78.6%	>95.0%	94.9%	87.7%	94.3%	93.8%	86.5%
Qld	94.5%	92.9%	64.5%	92.1%	91.4%	66.8%	92.4%	91.6%	63.4%
SA	>95.0%	94.0%	75.2%	92.7%	91.7%	74.5%	91.7%	90.6%	70.9%
Tas	>95.0%	>95.0%	74.0%	93.8%	93.2%	75.6%	93.9%	93.2%	71.7%
Vic	>95.0%	94.5%	73.6%	>95.0%	94.7%	72.8%	94.7%	94.1%	69.0%
WA	>95.0%	>95.0%	83.0%	>95.0%	94.5%	85.2%	>95.0%	94.6%	83.3%

*Individuals with Culturally and Linguistically Diverse (CALD) backgrounds are as reported in the 2021 Census, excluding those who have since departed Australia; those born in the UK, Ireland or NZ; and Aboriginal and/or Torres Strait Islander peoples. There is overlap across CALD cohorts where individuals may have reported they had more than one CALD characteristic in the 2021 Census.

Small negative changes may appear when compared with the previous report due to perturbation, in particular for small population groups.

Source: Australian Immunisation Register linked to the Multi-Agency Data Integration Project (Census 2021 characteristics)

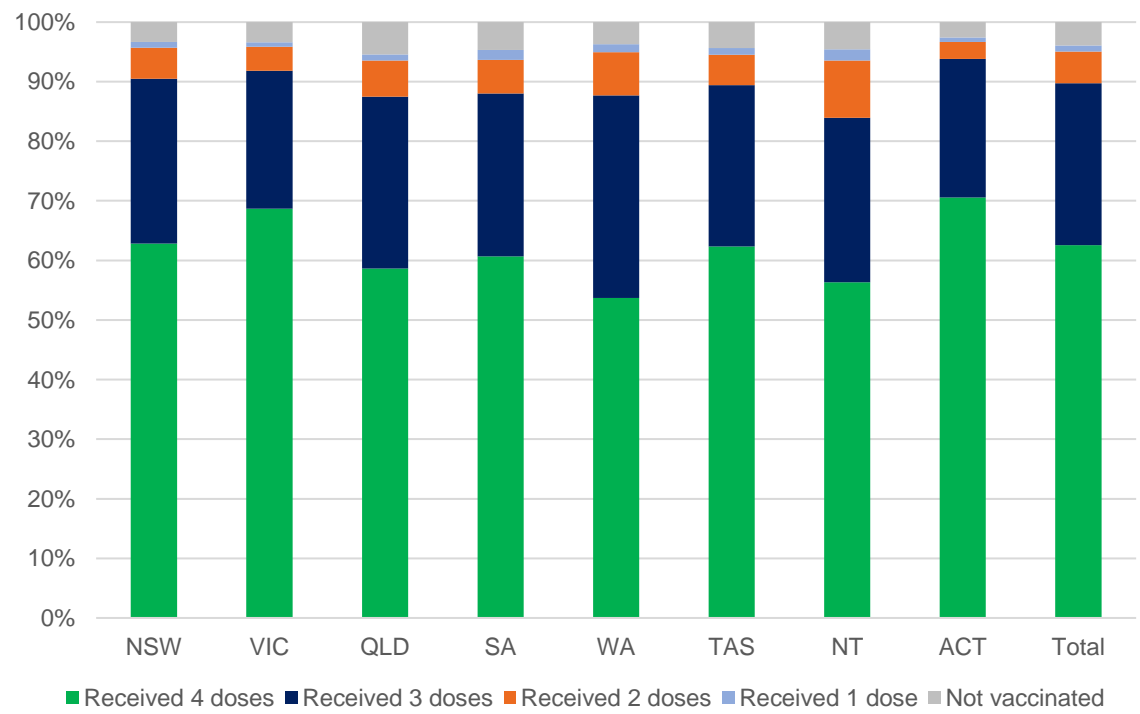
Data as at:
18 Aug 2022
Updated weekly

Residential aged care vaccination rollout

Residential aged care facilities status

171,878	170,035	160,595	111,919
People with at least one dose	People with at least two doses	People with three doses	People with four doses

Aged care resident vaccinations*



Aged care worker vaccinations

Jurisdictions	Total workers with at least one dose	Workers with at least two doses	% Workers with at least one dose	% Workers with at least two doses
NSW	78,477	78,340	99.9%	99.7%
VIC	71,377	71,373	100.0%	100.0%
QLD	49,032	49,022	100.0%	100.0%
SA	26,813	26,803	100.0%	100.0%
WA	24,749	24,742	100.0%	100.0%
TAS	7,506	7,506	100.0%	100.0%
NT	905	905	100.0%	100.0%
ACT	2,957	2,957	100.0%	100.0%
Total	261,816	261,648	100.0%	99.9%

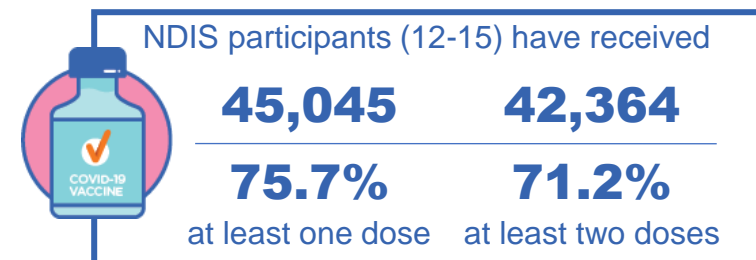
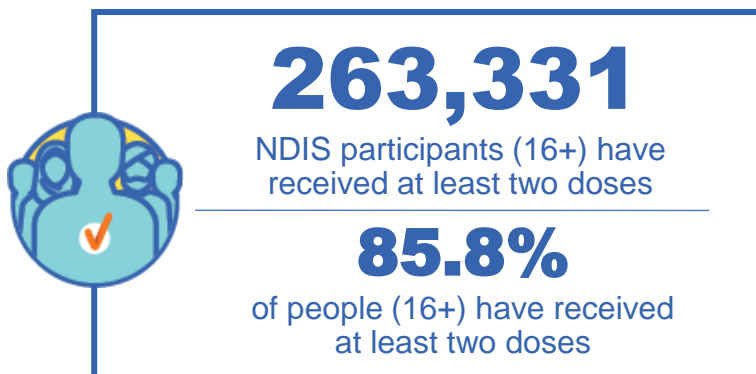
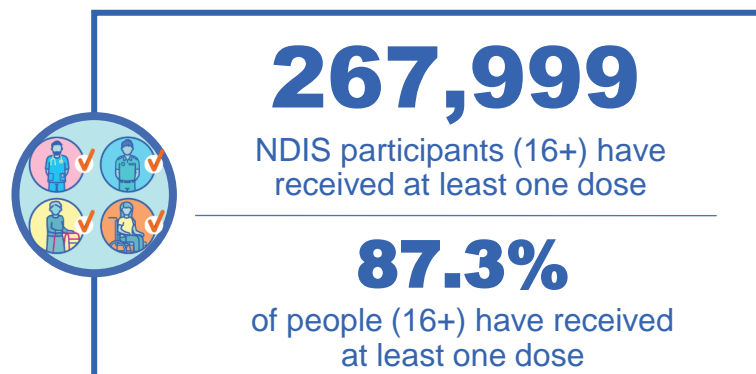
Source: Residential aged care provider self-reported COVID-19 vaccination information and matched AIR data of residents in permanent residential RACFs.

*Self-reported status updates are provided by facilities at least once per week. Reporting is updated Monday to Friday to encompass different facility updates being made on different days.

National Disability Insurance Scheme (NDIS) reported vaccinations

Data as at:
18 Aug 2022
Updated weekly

Australia's COVID-19
Vaccine Program



NDIS participant vaccinations

	% People aged 16+ with at least one dose	% People aged 16+ with at least two doses	% People aged 16+ with three doses	% People aged 16+ with four doses
ACT	89.5%	88.3%	83.6%	33.1%
NSW	87.8%	86.5%	75.2%	32.0%
NT	78.3%	76.1%	79.0%	24.1%
QLD	85.4%	83.8%	71.5%	26.8%
SA	85.1%	83.2%	78.2%	26.4%
TAS	87.6%	85.6%	76.2%	27.3%
VIC	88.4%	87.0%	77.6%	29.1%
WA	88.6%	86.9%	82.2%	29.2%
National	87.3%	85.8%	76.2%	29.3%

Source: Linkage between National Disability Insurance Agency data and the Australian Immunisation Register. Total NDIS participant numbers as at 01 August. Australian Immunisation Register data as at 17 August. Includes all participants regardless of residence type.

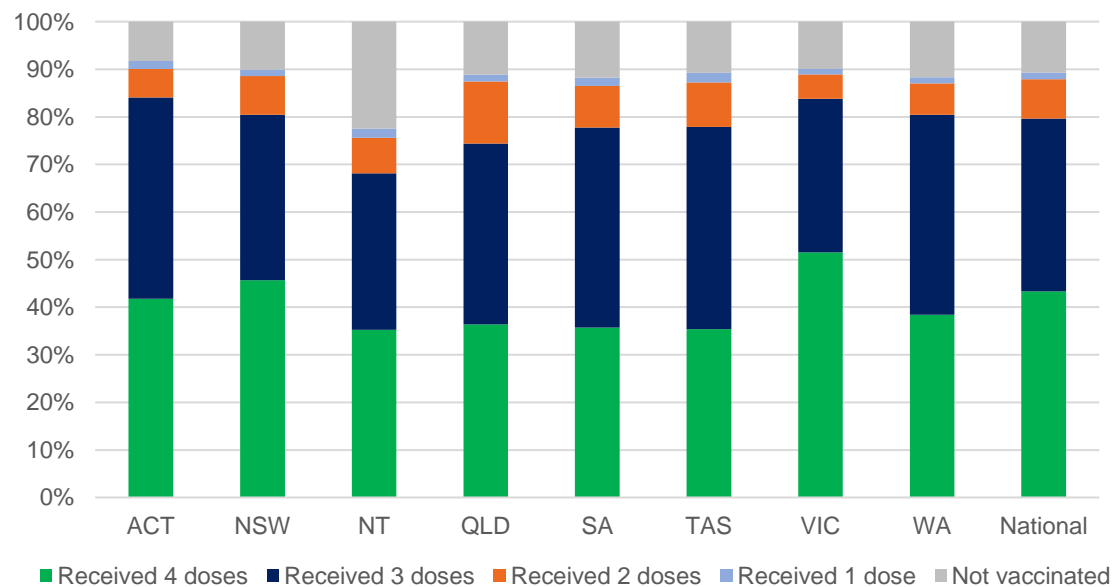
National Disability Insurance Scheme (NDIS) reported vaccinations

Data as at:
18 Aug 2022
Updated weekly

Australia's COVID-19
Vaccine Program

NATIONAL	People with at least one dose	People with at least two doses	Total number of individuals in cohort	% People with at least one dose	% People with at least two doses
NDIS participants living in disability accommodation	21,192	20,863	23,726	89.3%	87.9%

NDIS participants in disability and aged care accommodation



Source: Linkage between National Disability Insurance Agency data and the Australian Immunisation Register. Includes participants residing in disability accommodation only.
Source: Total NDIS participant numbers as at 01 August. Participant data as at 17 August. Australian Immunisation Register data as at 17 August. Worker data as at 17 August.

NDIS workforce vaccinations

	NDIS workers with at least one dose	NDIS workers with at least two doses	% NDIS workers with at least one dose	% NDIS workers with at least two doses
NSW	128,342	123,693	98.4%	94.9%
VIC	118,012	115,141	97.9%	95.5%
QLD	71,433	70,607	98.0%	96.8%
WA	34,489	33,105	92.1%	88.4%
SA	35,777	34,337	98.7%	94.7%
TAS	12,499	12,170	98.5%	95.9%
ACT	12,333	12,308	99.8%	99.6%
NT	3,639	3,492	99.6%	95.5%
TOTAL	416,524	404,853	97.7%	95.0%

Source: the NDIS Commission has established a requirement for registered NDIS providers who provide intensive disability support services to report on the vaccination status of workers they employ, or otherwise engage, to deliver NDIS-funded supports and services, and who are required to be vaccinated in accordance with in-force state and territory public health orders. The statistics reflect data reported to the NDIS Commission by registered NDIS providers and should be considered indicative and subject to change

Note: Some registered NDIS providers are yet to report on the vaccination status of their workforce. The NDIS Commission is working with those providers around reporting requirements.

Remaining workers not included include those exempt from vaccination requirements, workers whose vaccination status is not yet verified by the provider (such as workers on leave) and provider reporting anomalies.