



Australian Government

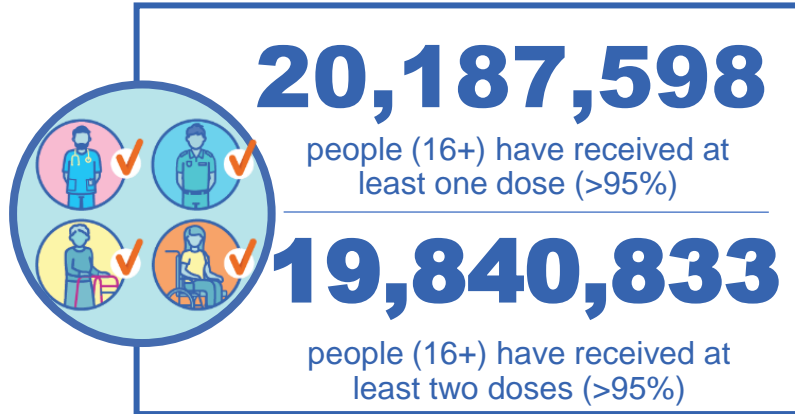
Department of Health and Aged Care

COVID-19 Vaccine Roll-out

18 August 2022

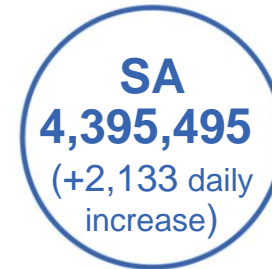
Data as at:
17 Aug 2022

Total vaccine doses



62,932,374 total vaccine doses administered nationally as at 17 August

+33,215 recorded in the last 24 hours

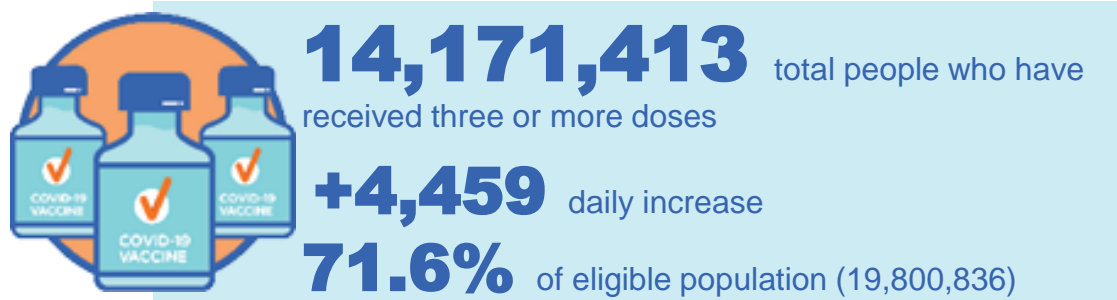
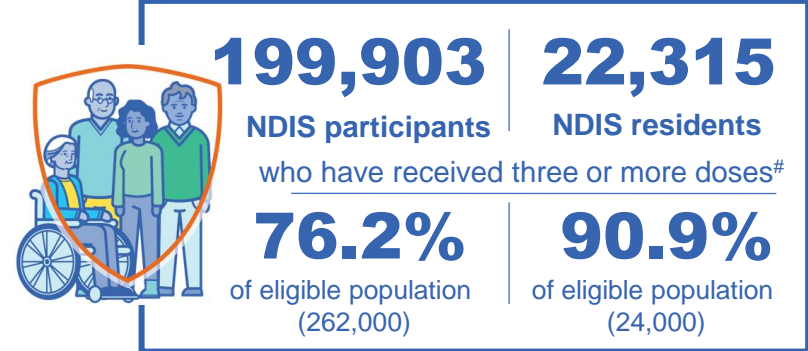
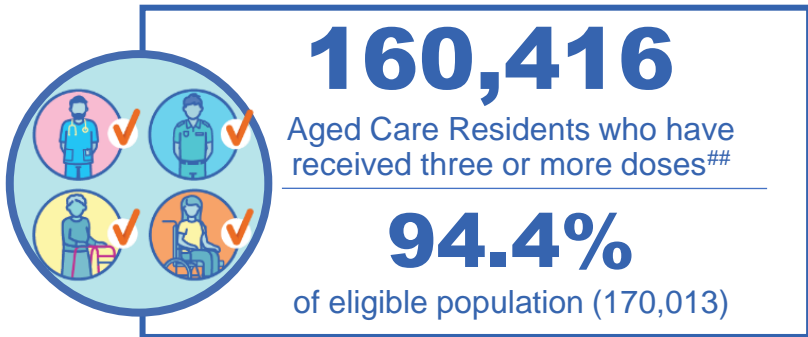
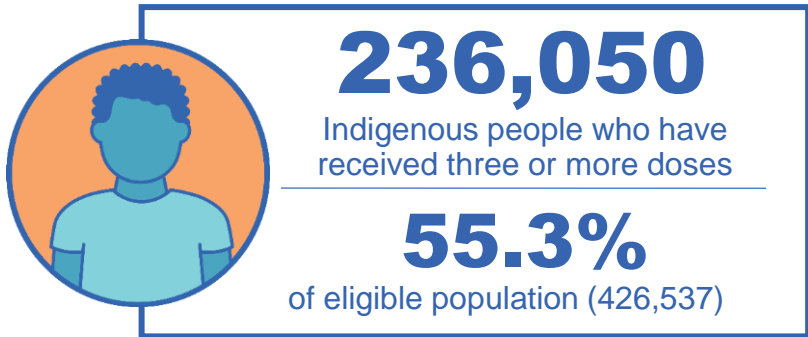


*Administration state breakdown indicates state in which a vaccine was administered

Source: Australian Immunisation Register

Third Doses

Data as at: 17 Aug 2022



	Number of People	Daily Increase	% of Eligible
NSW	4,336,499	1,645	69.4%
VIC	3,763,497	904	73.8%
QLD	2,467,005	987	64.7%
WA	1,721,206	341	83.1%
SA	1,018,143	339	75.4%
TAS	324,100	85	74.2%
ACT	278,715	90	80.0%
NT	132,610	40	78.8%


129,638 doses administered to persons residing in other territories or with missing residential information

*People may belong to multiple groups and could be represented in the above breakdowns multiple times.
NDIS participants data as at 15 August 2022. ## Aged Care Residents data as at 16 August 2022.

Source: Australian Immunisation Register

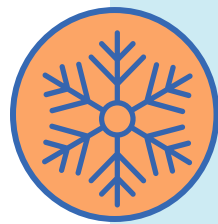
Data as at:
17 Aug 2022

Fourth Doses



110,766
Aged Care Residents who have received four or more doses#

81.0%
of eligible population (136,779)



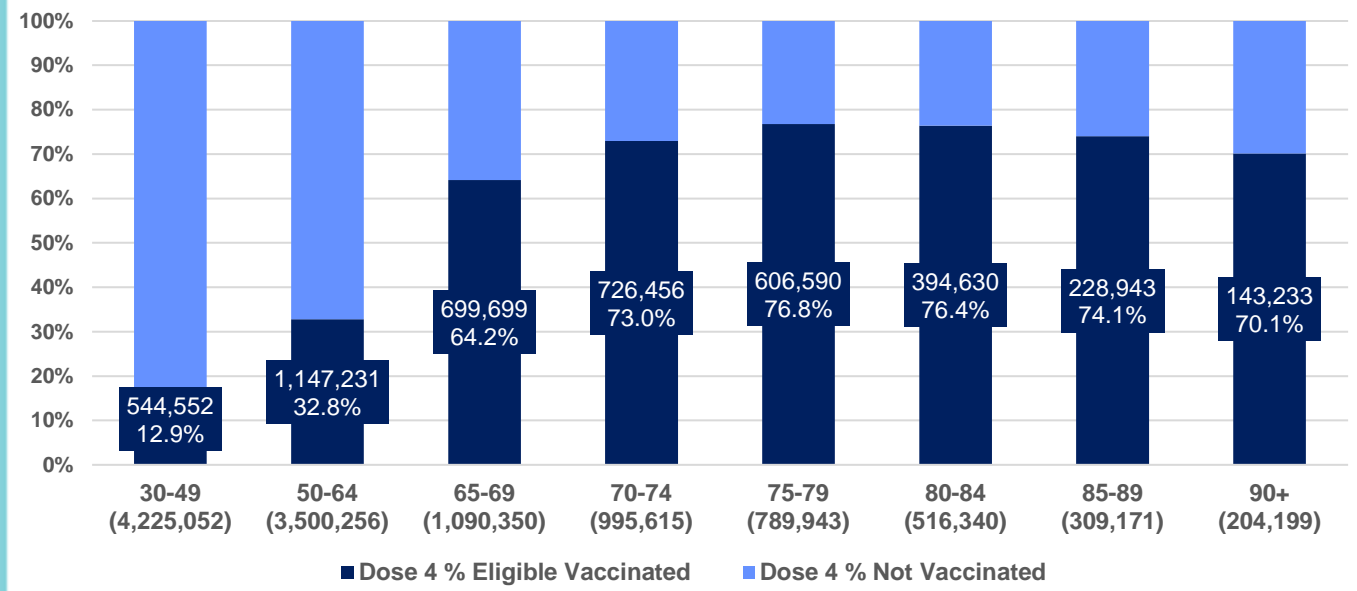
4,521,433
+25,799
38.6%
2,799,551
71.7%

total people (16+) who have received four doses
daily increase (16+)

of eligible population (30+) (11,630,926)

total people (65+) who have received four doses
of eligible population (65+) (3,905,618)

% Individuals eligible vaccinated by current age



	Number of People 16+	Daily Increase
ACT	93,009	991
NSW	1,453,199	8,153
NT	21,500	409
QLD	881,008	4,991
SA	355,401	1,770
TAS	121,939	653
VIC	1,116,039	6,250
WA	454,751	2,421

24,587 doses administered to persons residing in other territories or with missing residential information

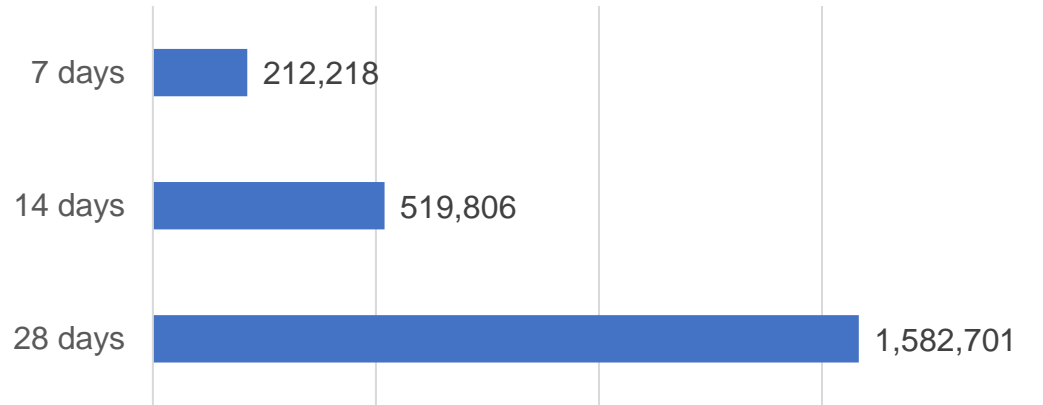
*People become eligible for a fourth dose three months after their third dose. Individuals may belong to multiple groups and could be represented in the above multiple times.
#Aged Care Residents data as at 16 August 2022.

Source: Australian Immunisation Register

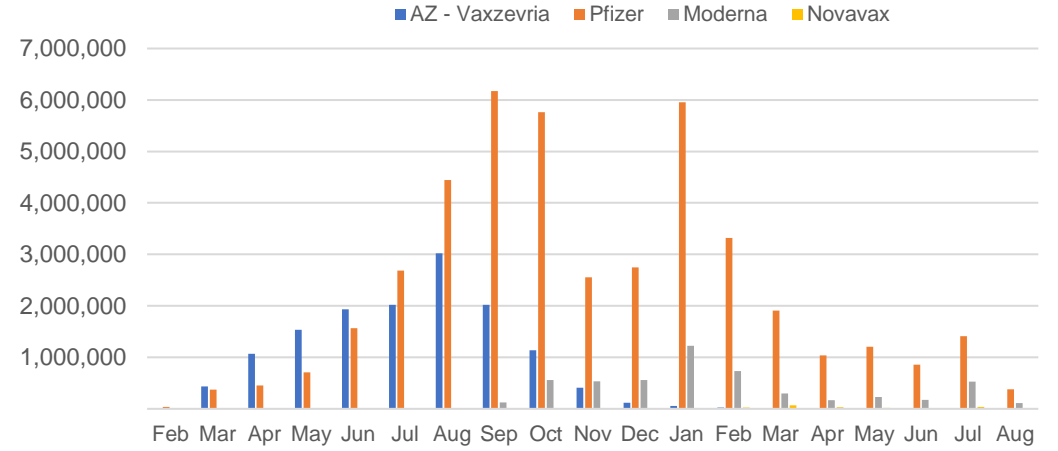
Vaccine milestone charts

Data as at:
14 Aug 2022
Updated weekly

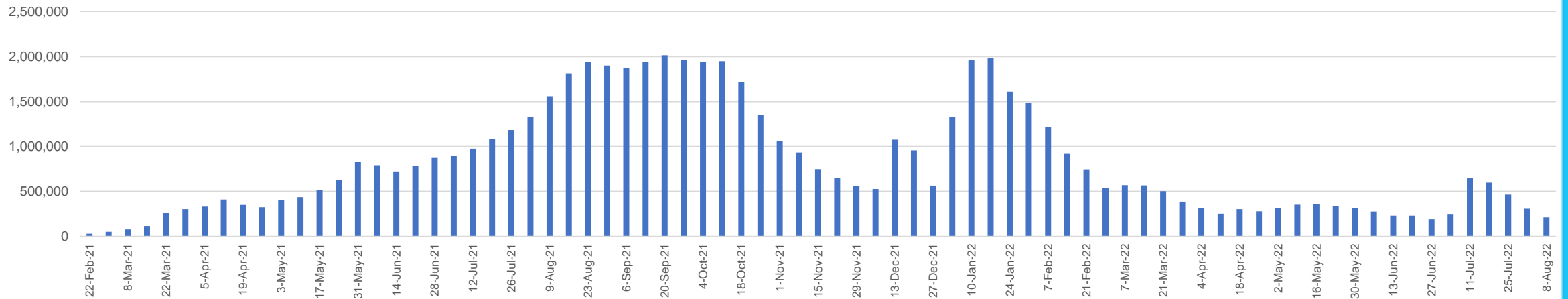
Doses Reported



Doses by administration month and vaccine type



Doses Administered by Week



*Sourced from the Australian Immunisation Register.

Data as at:
14 Aug 2022
Updated weekly

Doses by age and jurisdiction

	AUS	ACT	NSW	NT	QLD	SA	TAS	VIC	WA
5 to 11 - dose 1	1,185,694	31,607	355,456	12,902	204,656	82,916	28,174	322,455	138,548
5 to 11 - dose 2	924,824	27,741	285,207	8,840	153,537	65,461	23,348	251,302	104,501
5 to 11 - population	2,276,638	39,789	716,460	24,750	478,731	148,816	45,033	578,499	244,154
5 to 11 % with dose 1	52.08%	79.44%	49.61%	52.13%	42.75%	55.72%	62.56%	55.74%	56.75%
5 to 11 % with dose 2	40.62%	69.72%	39.81%	35.72%	32.07%	43.99%	51.85%	43.44%	42.80%
12 to 15 - dose 1	1,042,772	20,142	320,728	10,645	203,787	67,705	22,600	272,392	114,794
12 to 15 - dose 2	985,657	19,586	306,335	9,581	189,987	63,940	21,473	260,108	106,196
12 to 15 - population	1,243,990	19,693	390,330	13,060	270,146	82,747	26,308	308,611	132,869
12 to 15 % with dose 1	83.82%	>99%	82.17%	81.51%	75.44%	81.82%	85.91%	88.26%	86.40%
12 to 15 % with dose 2	79.23%	>99%	78.48%	73.36%	70.33%	77.27%	81.62%	84.28%	79.93%
16 and over - dose 1	20,182,662	354,649	6,362,505	173,506	3,887,958	1,383,508	446,890	5,191,141	2,106,538
16 and over - dose 2	19,836,461	348,652	6,260,382	168,792	3,823,311	1,353,811	437,888	5,109,829	2,074,812
16 and over - dose 3	14,158,701	278,475	4,331,890	132,516	2,464,400	1,017,188	323,797	3,760,854	1,720,168
16 and over - population	20,619,959	344,037	6,565,651	190,571	4,112,707	1,440,400	440,172	5,407,574	2,114,978
16 and over % with dose 1	97.88%	>99%	96.91%	91.05%	94.54%	96.05%	>99%	96.00%	>99%
16 and over % with dose 2	96.20%	>99%	95.35%	88.57%	92.96%	93.99%	>99%	94.49%	98.10%
16 and over % with dose 3	68.67%	80.94%	65.98%	69.54%	59.92%	70.62%	73.56%	69.55%	81.33%
30 and over - dose 1	15,790,878	274,254	5,005,395	128,183	3,039,559	1,101,406	355,172	4,055,976	1,650,179
30 and over - dose 2	15,559,812	270,239	4,935,473	125,567	2,997,543	1,082,662	349,411	4,000,418	1,629,092
30 and over - dose 3	11,997,597	228,307	3,708,018	104,056	2,148,465	871,348	279,931	3,145,825	1,415,942
30 and over - dose 4	4,420,143	89,954	1,419,652	20,265	863,044	349,152	119,266	1,089,815	445,226
30 and over - population	15,805,337	258,148	5,042,108	140,343	3,148,826	1,126,262	349,703	4,096,873	1,639,833
30 and over % with dose 1	>99%	>99%	>99%	91.34%	96.53%	97.79%	>99%	>99%	>99%
30 and over % with dose 2	98.45%	>99%	97.89%	89.47%	95.20%	96.13%	>99%	97.65%	>99%
30 and over % with dose 3	75.91%	88.44%	73.54%	74.14%	68.23%	77.37%	80.05%	76.79%	86.35%
30 and over % with dose 4	27.97%	34.85%	28.16%	14.44%	27.41%	31.00%	34.10%	26.60%	27.15%
65 and over - dose 1	4,469,919	65,412	1,448,284	20,699	867,032	357,353	117,402	1,115,254	436,448
65 and over - dose 2	4,409,855	64,400	1,428,941	20,362	856,916	352,822	116,085	1,099,588	431,581
65 and over - dose 3	3,985,045	60,096	1,278,971	18,140	774,998	324,896	107,567	986,300	403,178
65 and over - dose 4	2,775,013	46,772	886,505	10,165	557,331	233,273	78,651	668,408	277,289
65 and over - population	4,192,882	57,745	1,366,640	20,994	831,881	338,903	110,799	1,057,498	407,530
65 and over % with dose 1	>99%	>99%	>99%	98.59%	>99%	>99%	>99%	>99%	>99%
65 and over % with dose 2	>99%	>99%	>99%	96.99%	>99%	>99%	>99%	>99%	>99%
65 and over % with dose 3	95.04%	>99%	93.59%	86.41%	93.16%	95.87%	97.08%	93.27%	98.93%
65 and over % with dose 4	66.18%	81.00%	64.87%	48.42%	67.00%	68.83%	70.99%	63.21%	68.04%

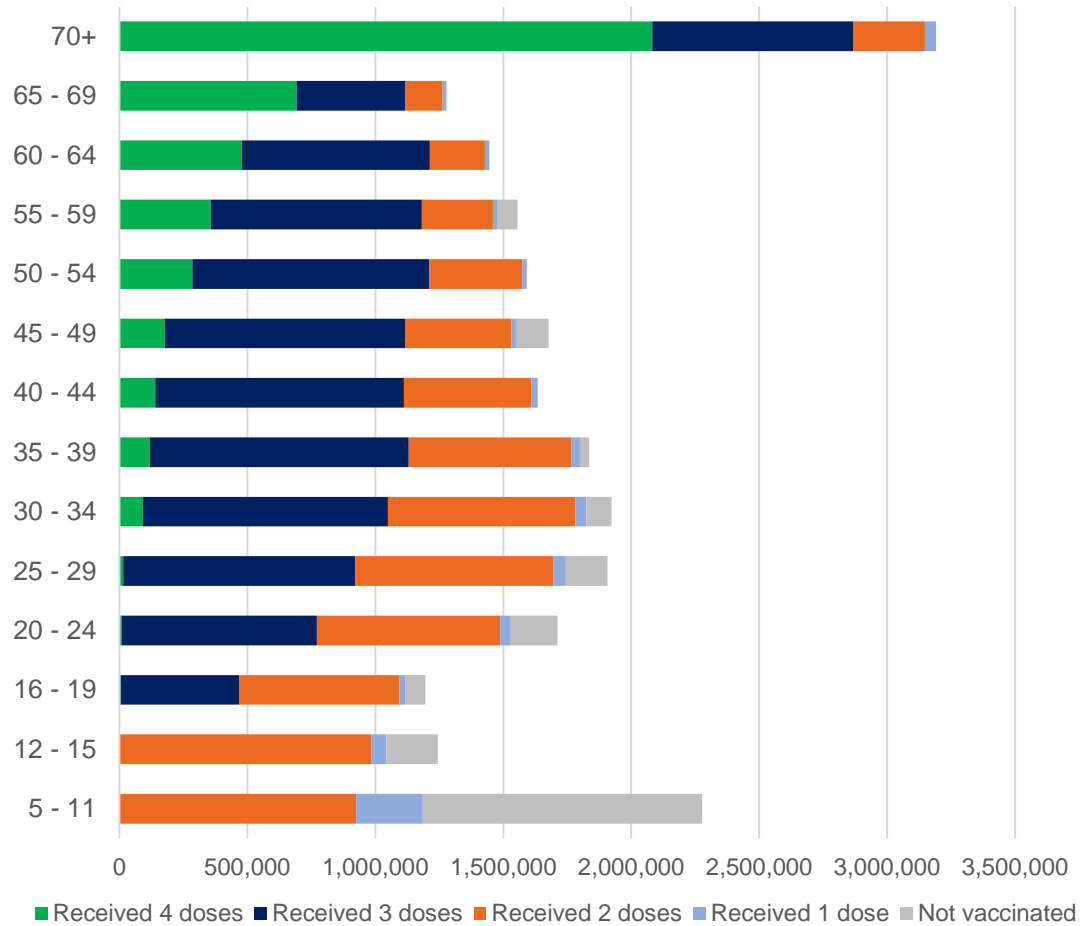
*National population will not equal sum of listed jurisdictions due to a small number of people counted in national population residing in some 'other' territories. Sum of state doses will not add to national total as some records are unable to be geocoded to a State or Territory.

Doses sourced from Australian Immunisation Register, population from ABS ERP June 2020

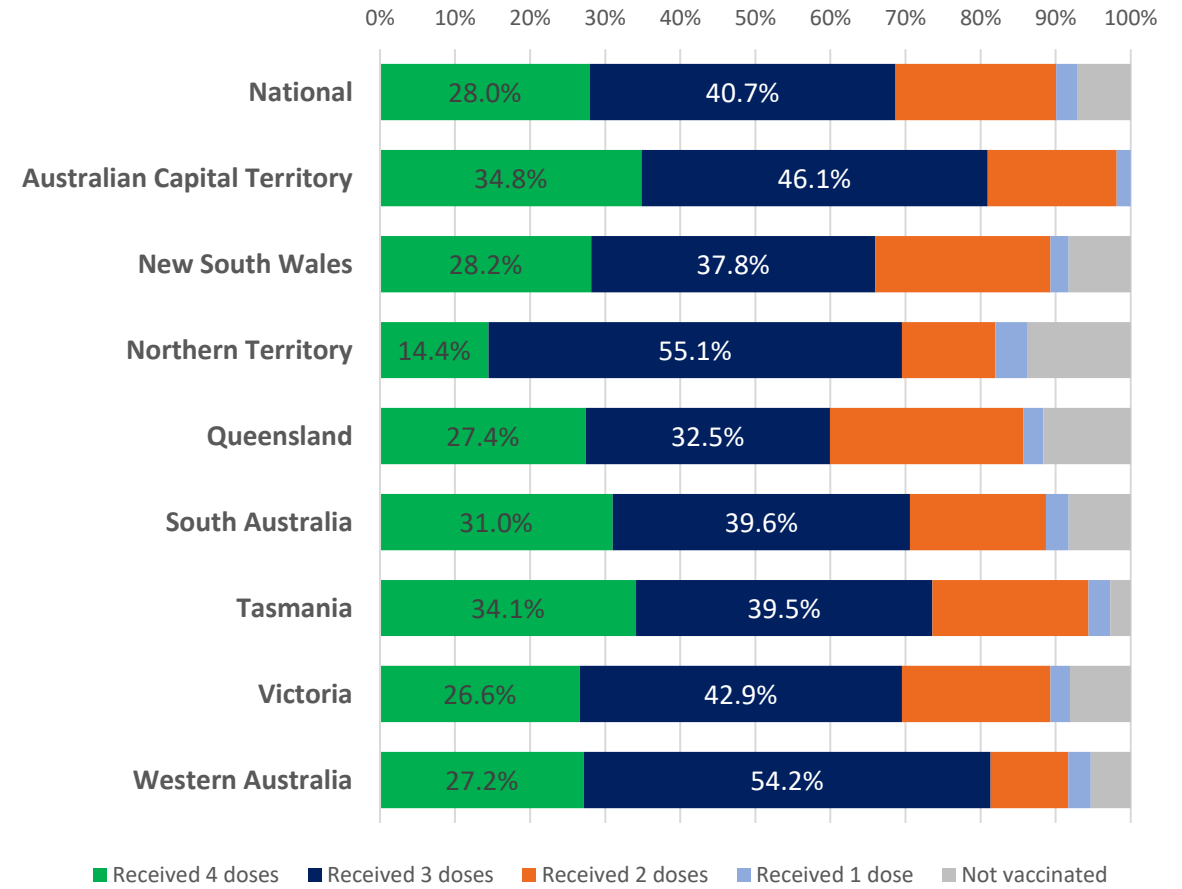
Data as at:
14 Aug 2022
Updated weekly

Vaccinations by age and location

Number of people vaccinated by age

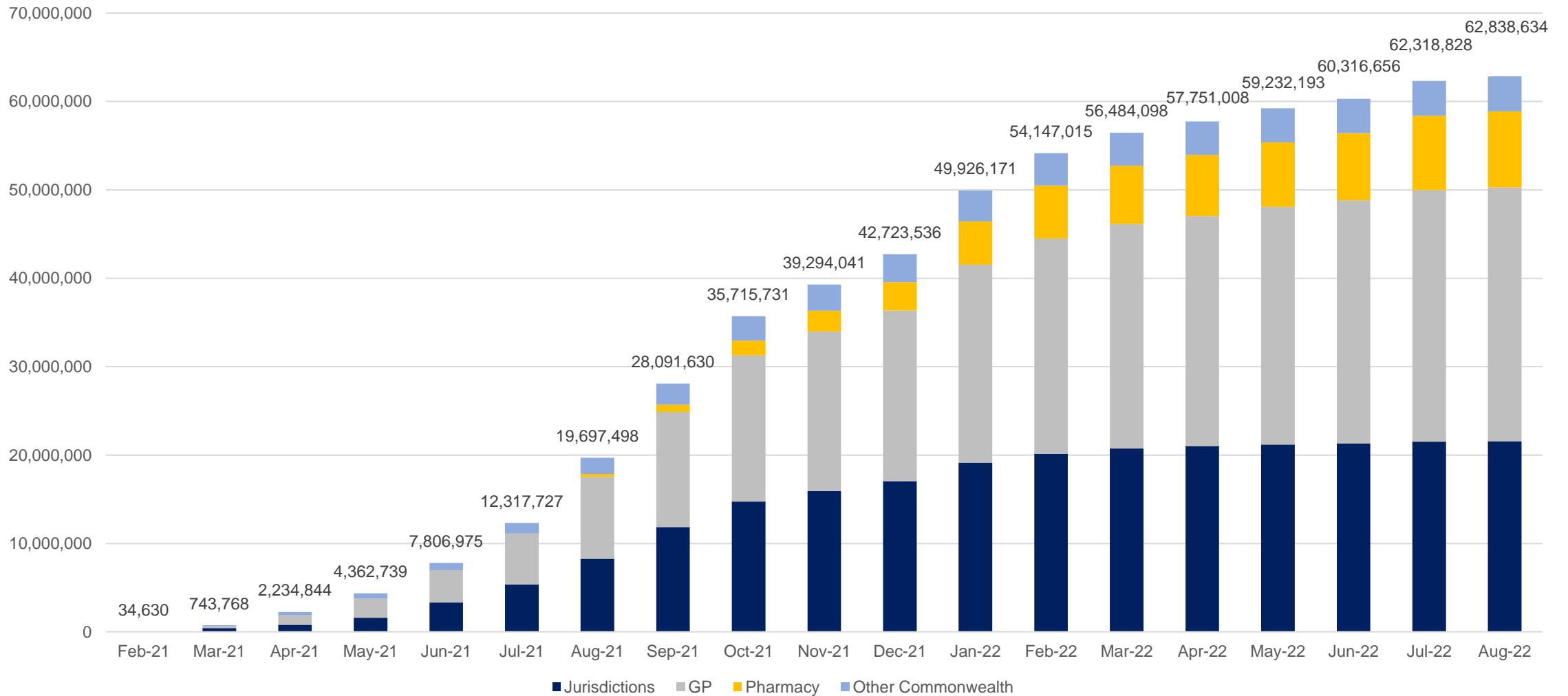


Individuals vaccinated by residential location



Cumulative doses administered by channel

Data as at:
14 Aug 2022
Updated weekly



Source: Australian Immunisation Register

Commonwealth primary care

Data as at:
14 Aug 2022
Updated weekly

Australia's COVID-19
Vaccine Program



Primary care vaccine administration sites

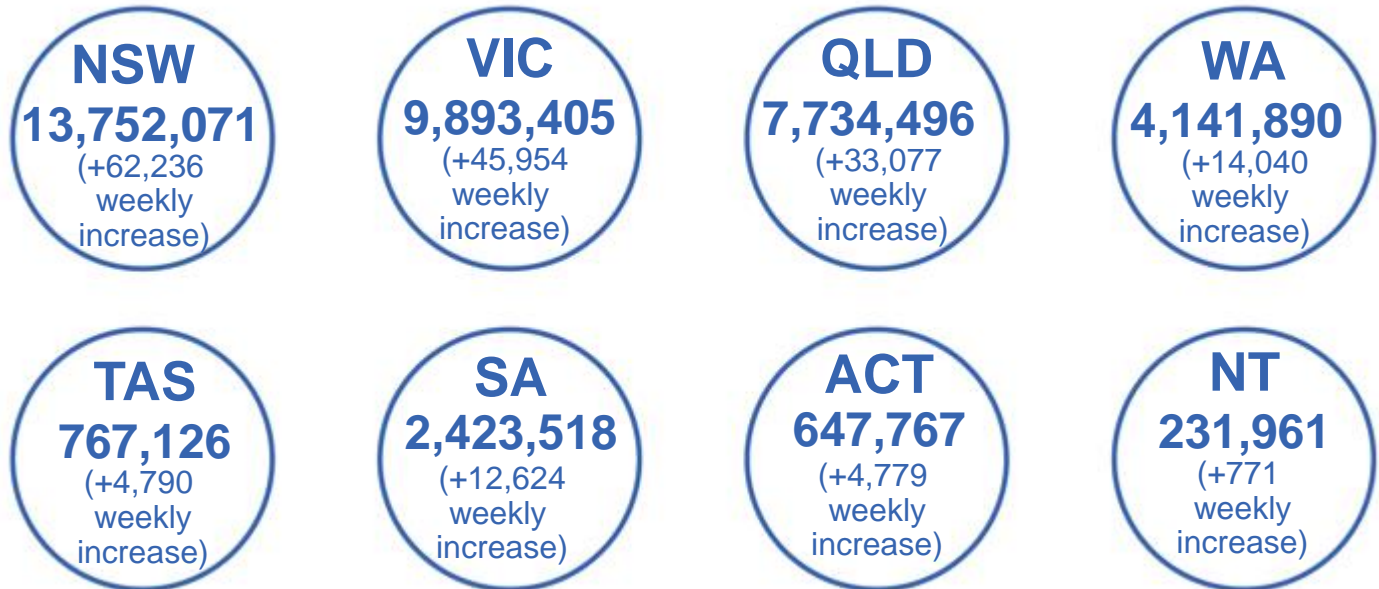
5,684	116	179	3,620
GPs	CVCs	ACCHS	Pharmacies



39,940,808 total vaccine doses administered
primary care settings as at 14 August
+186,870 recorded in the last week

Primary care vaccinations by provider type

	Doses administered	7 day increase
General Practice* includes other Commonwealth	31,334,460	109,866
Pharmacy	8,606,348	77,004



348,574

doses administered to persons residing in other territories or with missing residential information

*General practice includes Commonwealth Vaccination Clinics, Aboriginal Community Health Centres, Royal Flying Doctor Service and other Commonwealth vaccination facilities

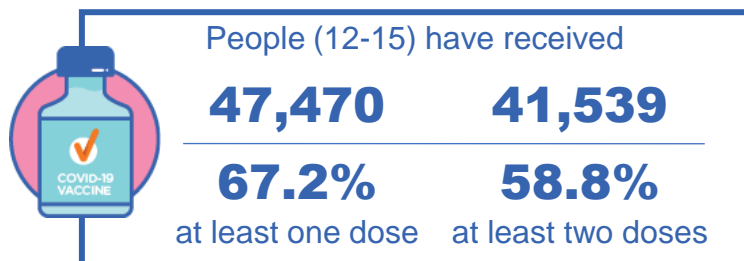
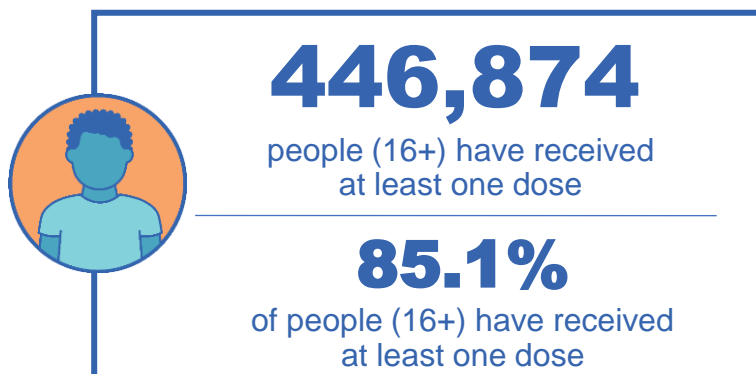
Source: Australian Immunisation Register

Aboriginal and Torres Strait Islander peoples

Number of people vaccinated

Data as at:
14 Aug 2022
Updated weekly

Australia's COVID-19
Vaccine Program



178 Aboriginal community controlled health services (ACCHS) sites

0#	50	27	44	12	3	21	21
ACT	NSW	NT	QLD	SA	TAS	VIC	WA

Medicare Address State ^{##}	Individuals Dose 1 % (16+)	Individuals Dose 2 % (16+)	Individuals Dose 3 % Eligible (aged 16+)	Individuals Dose 4 % Eligible (aged 30+)
Australian Capital Territory	91.8%	89.6%	64.2%	35.4%
New South Wales	87.4%	85.5%	51.8%	34.0%
Northern Territory	89.7%	85.5%	68.4%	19.8%
Queensland	82.0%	78.3%	48.2%	33.0%
South Australia	80.8%	75.3%	60.0%	33.5%
Tasmania	89.0%	86.4%	59.9%	36.6%
Victoria	90.5%	88.5%	61.5%	31.6%
Western Australia	86.9%	81.2%	64.7%	23.4%
Unknown/Other Territories	71.7%	66.5%	48.4%	18.4%
Totals	85.1%	81.7%	55.2%	30.2%

Source: Australian Immunisation Register

*Identifying as Aboriginal and Torres Strait Islander is optional and the estimated population may be under reported.

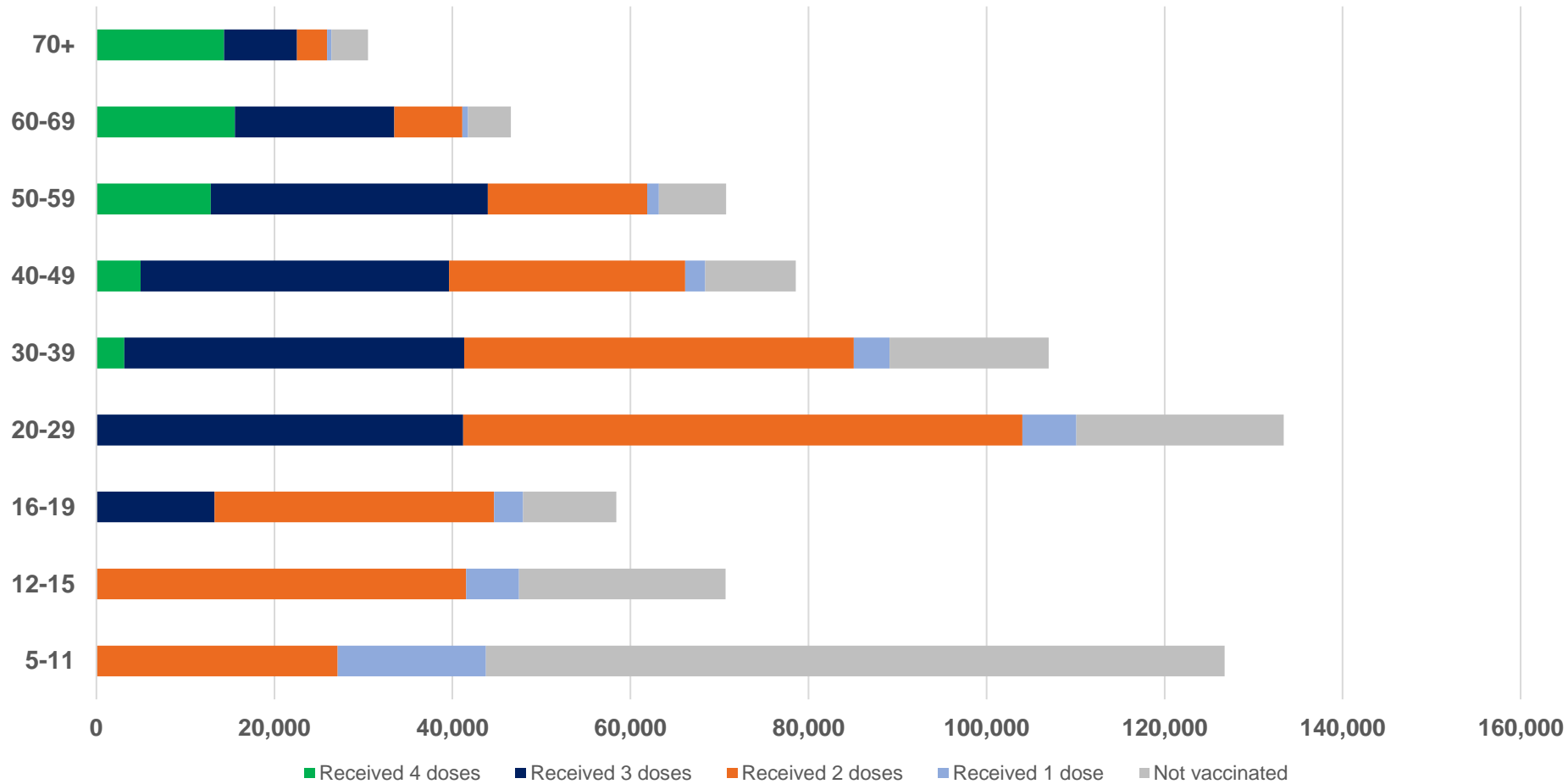
**Includes all Aboriginal and Torres Strait Islander peoples who have received a vaccination, not limited to those administered in an ACCHS setting.

#ACCHS in the ACT are currently operating as Commonwealth Vaccine Clinics so not included to avoid double counting.

##The above table includes all identified Aboriginal and Torres Strait Islander people who are aged 16 and above by their state of residence.

Aboriginal and Torres Strait Islander peoples Number of people vaccinated by age

Data as at:
14 Aug 2022
Updated weekly



Source: Australian Immunisation Register

Individuals with Culturally and Linguistically Diverse (CALD) backgrounds data

Data as at:
31 Jul 2022
Updated weekly

Australia's COVID-19
Vaccine Program

People over the age of 16

CALD population *	Total number of individuals in cohort	% People with at least one dose	% People who received two doses	% of eligible people who received three or more doses
General population	20,619,959	>95.0%	>95.0%	71.3%
People born overseas	4,451,667	94.4%	93.8%	72.3%
Speaks a language other than English at home	4,106,196	94.0%	93.3%	68.3%

	General population			Born Overseas			Speaks a language other than English at home		
	% with at least one dose	% who received two doses	% of eligible people who received three or more doses	% with at least one dose	% who received two doses	% of eligible people who received three or more doses	% with at least one dose	% who received two doses	% of eligible people who received three or more doses
ACT	>95.0%	>95.0%	79.7%	>95.0%	>95.0%	78.1%	>95.0%	>95.0%	75.5%
NSW	>95.0%	>95.0%	69.0%	94.8%	94.2%	69.6%	94.1%	93.4%	65.0%
NT	91.3%	88.8%	78.5%	>95.0%	94.7%	87.7%	94.1%	93.6%	86.5%
Qld	94.5%	92.9%	64.3%	92.1%	91.3%	66.7%	92.4%	91.5%	63.2%
SA	>95.0%	93.9%	75.1%	92.6%	91.6%	74.4%	91.6%	90.5%	70.7%
Tas	>95.0%	>95.0%	73.8%	93.5%	92.9%	75.4%	93.6%	92.9%	71.5%
Vic	>95.0%	94.4%	73.5%	>95.0%	94.6%	72.6%	94.6%	94.0%	68.9%
WA	>95.0%	>95.0%	83.0%	>95.0%	94.5%	85.1%	>95.0%	94.5%	83.3%

*Individuals with Culturally and Linguistically Diverse (CALD) backgrounds are as reported in the 2021 Census, excluding those who have since departed Australia; those born in the UK, Ireland or NZ; and Aboriginal and/or Torres Strait Islander peoples. There is overlap across CALD cohorts where individuals may have reported they had more than one CALD characteristic in the 2021 Census.

Small negative changes may appear when compared with the previous report due to perturbation, in particular for small population groups.

Source: Australian Immunisation Register linked to the Multi-Agency Data Integration Project (Census 2021 characteristics)

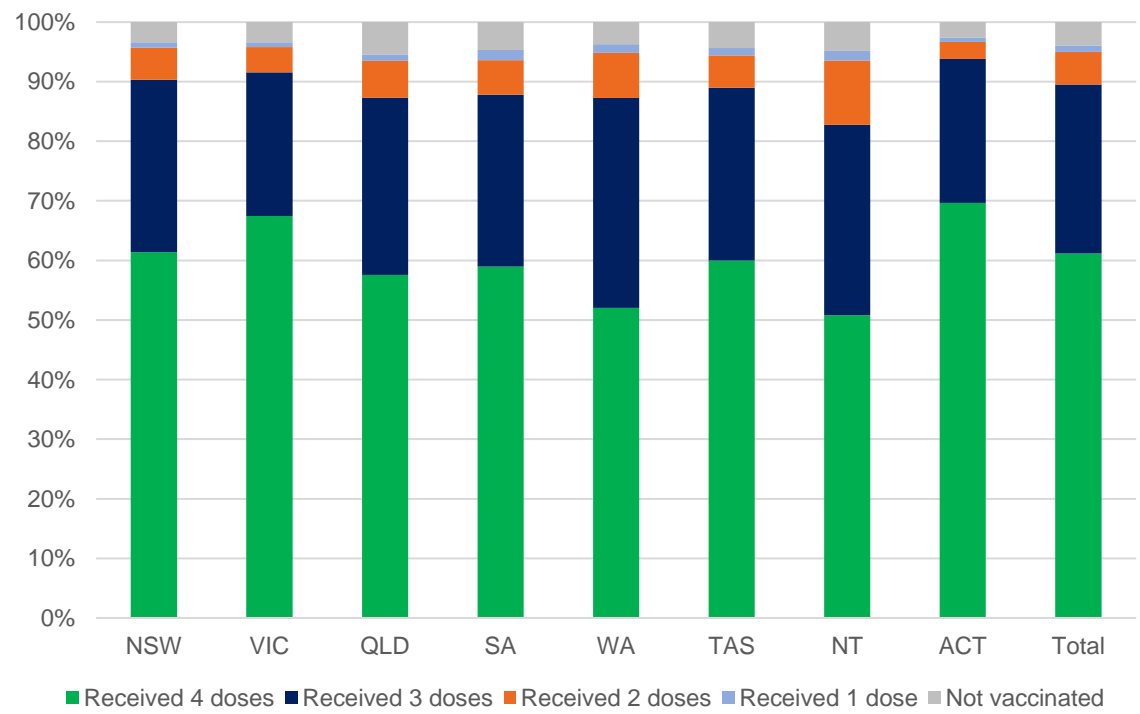
Data as at:
11 Aug 2022
Updated weekly

Residential aged care vaccination rollout

Residential aged care facilities status

171,860	169,969	160,209	109,444
People with at least one dose	People with at least two doses	People with three doses	People with four doses

Aged care resident vaccinations*



Aged care worker vaccinations

Jurisdictions	Total workers with at least one dose	Workers with at least two doses	% Workers with at least one dose	% Workers with at least two doses
NSW	77,967	77,838	99.9%	99.7%
VIC	71,277	71,277	100.0%	100.0%
QLD	48,984	48,974	100.0%	100.0%
SA	26,695	26,686	100.0%	100.0%
WA	24,767	24,761	100.0%	100.0%
TAS	7,518	7,518	100.0%	100.0%
NT	898	898	100.0%	100.0%
ACT	2,952	2,952	100.0%	100.0%
Total	261,058	260,904	100.0%	99.9%

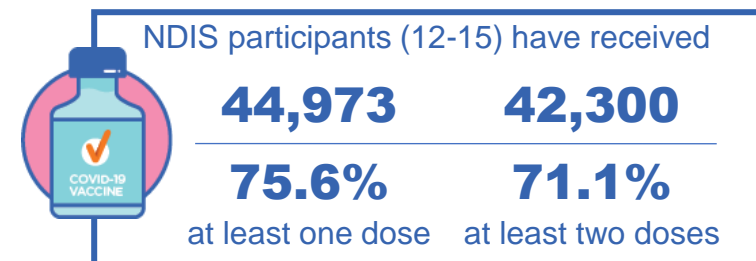
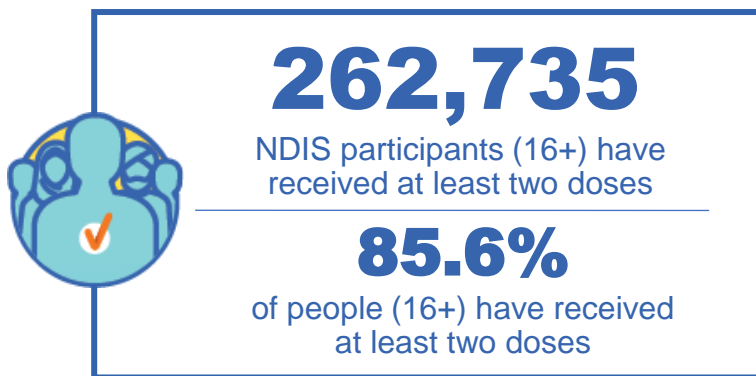
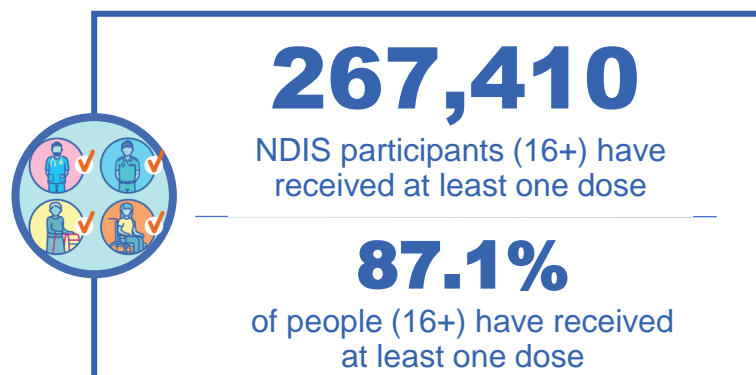
Source: Residential aged care provider self-reported COVID-19 vaccination information and matched AIR data of residents in permanent residential RACFs.

*Self-reported status updates are provided by facilities at least once per week. Reporting is updated Monday to Friday to encompass different facility updates being made on different days.

National Disability Insurance Scheme (NDIS) reported vaccinations

Data as at:
11 Aug 2022
Updated weekly

Australia's COVID-19
Vaccine Program



NDIS participant vaccinations

	% People aged 16+ with at least one dose	% People aged 16+ with at least two doses	% People aged 16+ with three doses	% People aged 16+ with four doses
ACT	89.4%	88.2%	83.7%	32.2%
NSW	87.7%	86.3%	75.1%	31.2%
NT	78.1%	75.8%	78.8%	23.2%
QLD	85.2%	83.6%	71.4%	26.1%
SA	84.9%	83.0%	78.1%	25.4%
TAS	87.5%	85.4%	76.1%	26.2%
VIC	88.2%	86.8%	77.6%	28.2%
WA	88.4%	86.7%	82.1%	28.2%
National	87.1%	85.6%	76.2%	28.4%

Source: Linkage between National Disability Insurance Agency data and the Australian Immunisation Register. Total NDIS participant numbers as at 01 August. Australian Immunisation Register data as at 10 August. Includes all participants regardless of residence type.

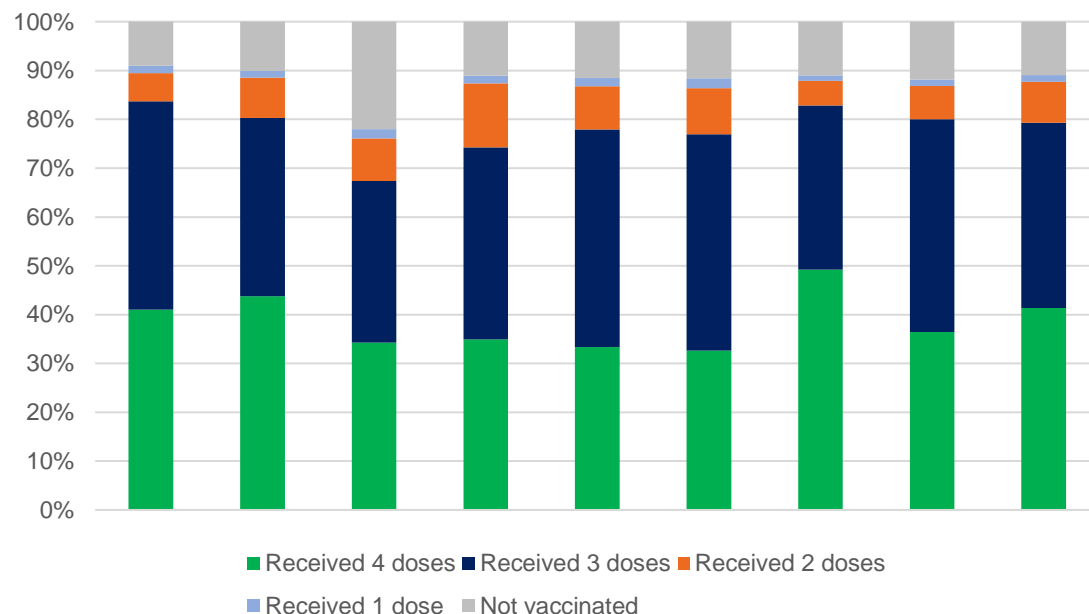
National Disability Insurance Scheme (NDIS) reported vaccinations

Data as at:
11 Aug 2022
Updated weekly

Australia's COVID-19
Vaccine Program

NATIONAL	People with at least one dose	People with at least two doses	Total number of individuals in cohort	% People with at least one dose	% People with at least two doses
NDIS participants living in disability accommodation	21,112	20,780	23,726	89.0%	87.6%

NDIS participants in disability and aged care accommodation



Source: Linkage between National Disability Insurance Agency data and the Australian Immunisation Register. Includes participants residing in disability accommodation only.
Source: Total NDIS participant numbers as at 01 August. Participant data as at 10 August. Australian Immunisation Register data as at 10 August. Worker data as at 11 August.

NDIS workforce vaccinations

	NDIS workers with at least one dose	NDIS workers with at least two doses	% NDIS workers with at least one dose	% NDIS workers with at least two doses
NSW	128,430	123,786	98.3%	94.8%
VIC	117,906	115,017	97.8%	95.4%
QLD	71,499	70,660	97.9%	96.8%
WA	34,548	33,158	99.0%	95.0%
SA	35,736	34,290	98.7%	94.7%
TAS	12,520	12,189	98.5%	95.9%
ACT	12,325	12,300	99.8%	99.6%
NT	3,980	3,833	99.6%	95.9%
TOTAL	416,944	405,233	98.3%	95.5%

Source: the NDIS Commission has established a requirement for registered NDIS providers who provide intensive disability support services to report on the vaccination status of workers they employ, or otherwise engage, to deliver NDIS-funded supports and services, and who are required to be vaccinated in accordance with in-force state and territory public health orders. The statistics reflect data reported to the NDIS Commission by registered NDIS providers and should be considered indicative and subject to change

Note: Some registered NDIS providers are yet to report on the vaccination status of their workforce. The NDIS Commission is working with those providers around reporting requirements.

Remaining workers not included include those exempt from vaccination requirements, workers whose vaccination status is not yet verified by the provider (such as workers on leave) and provider reporting anomalies.