



**Australian Government**  

---

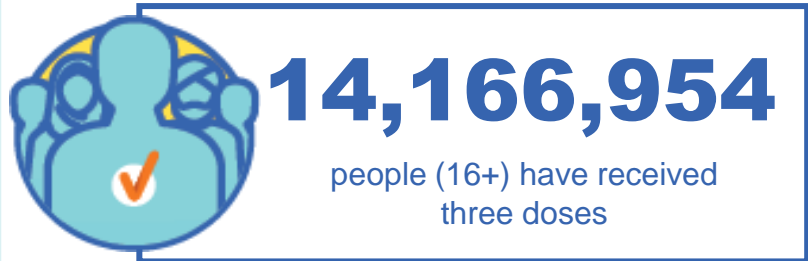
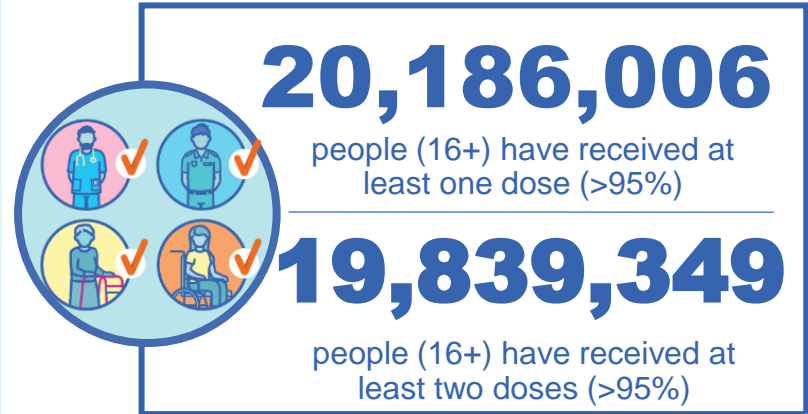
**Department of Health and Aged Care**

# COVID-19 Vaccine Roll-out

17 August 2022

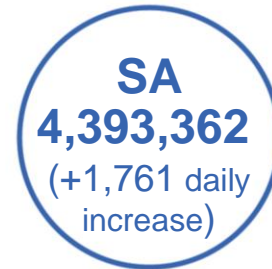
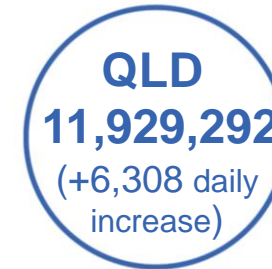
Data as at:  
16 Aug 2022

# Total vaccine doses



**62,899,159** total vaccine doses administered nationally as at 16 August

**+31,292** recorded in the last 24 hours

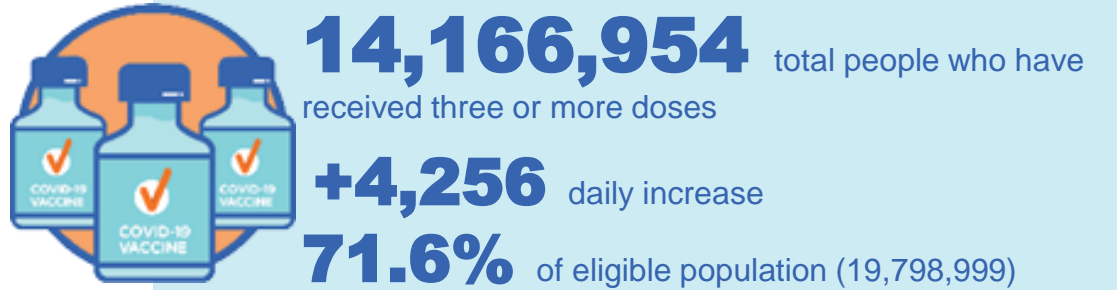
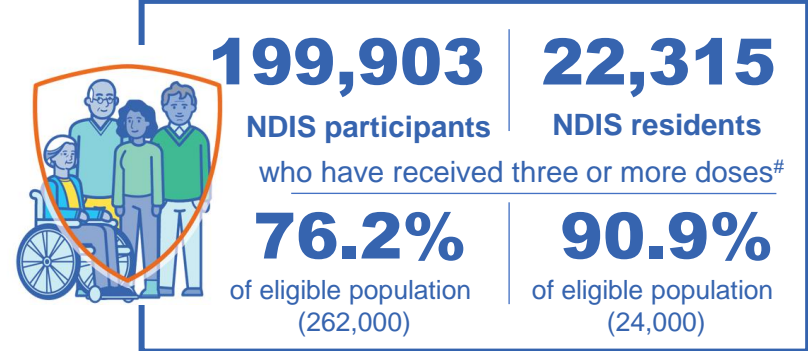
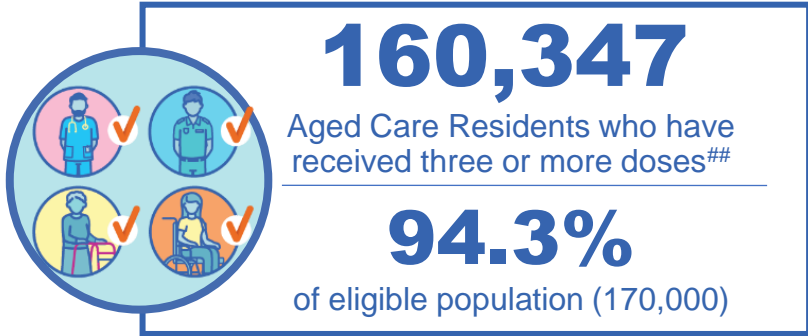
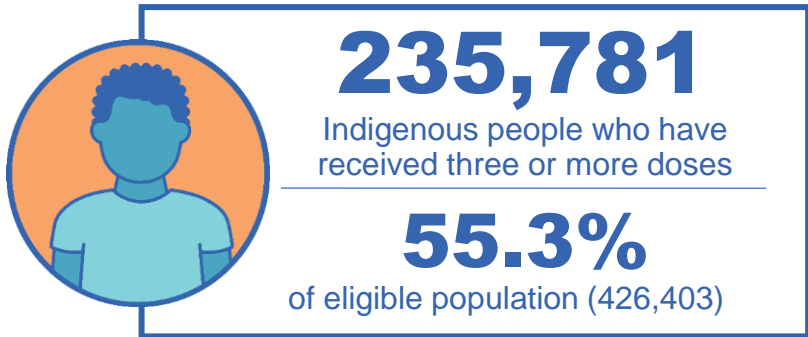


\*Administration state breakdown indicates state in which a vaccine was administered

Source: Australian Immunisation Register

Data as at: 16 Aug 2022

# Third Doses



|     | Number of People | Daily Increase | % of Eligible |
|-----|------------------|----------------|---------------|
| NSW | 4,334,854        | 1,462          | 69.4%         |
| VIC | 3,762,593        | 914            | 73.7%         |
| QLD | 2,466,018        | 895            | 64.6%         |
| WA  | 1,720,865        | 329            | 83.1%         |
| SA  | 1,017,804        | 298            | 75.4%         |
| TAS | 324,015          | 89             | 74.2%         |
| ACT | 278,625          | 78             | 80.0%         |
| NT  | 132,570          | 24             | 78.8%         |

**129,610**


doses administered to persons residing in other territories or with missing residential information

\*People may belong to multiple groups and could be represented in the above breakdowns multiple times.  
# NDIS participants data as at 15 August 2022. ## Aged Care Residents data as at 15 August 2022.

Source: Australian Immunisation Register

Data as at:  
16 Aug 2022

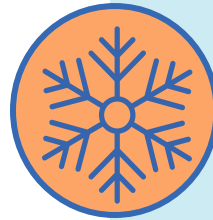
# Fourth Doses



**110,322**  
Aged Care Residents who have received four or more doses#

---

**80.9%**  
of eligible population (136,413)



**4,495,634**  
**+24,116**  
**38.4%**  
**2,791,289**  
**71.5%**

total people (16+) who have received four doses  
daily increase (16+)

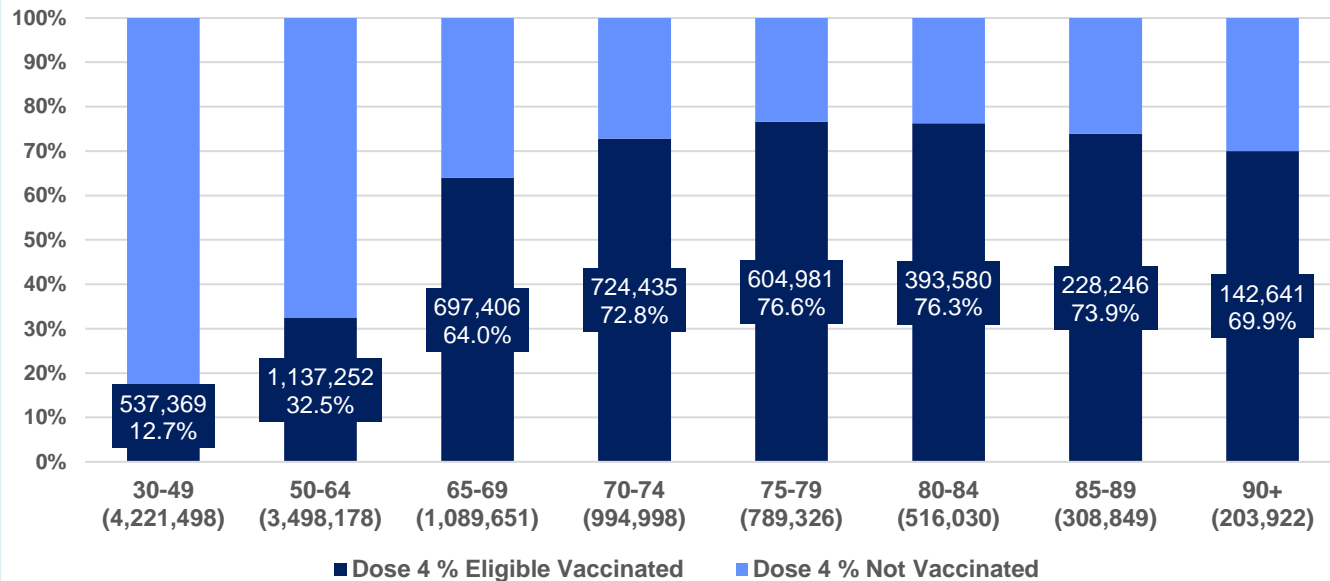
---

of eligible population (30+) (11,622,452)

---

total people (65+) who have received four doses  
of eligible population (65+) (3,902,776)

% Individuals eligible vaccinated by current age



|     | Number of People 16+ | Daily Increase |
|-----|----------------------|----------------|
| ACT | 92,018               | 630            |
| NSW | 1,445,046            | 7,506          |
| NT  | 21,091               | 316            |
| QLD | 876,017              | 4,807          |
| SA  | 353,631              | 1,337          |
| TAS | 121,286              | 673            |
| VIC | 1,109,789            | 6,403          |
| WA  | 452,330              | 2,266          |

**24,426** doses administered to persons residing in other territories or with missing residential information

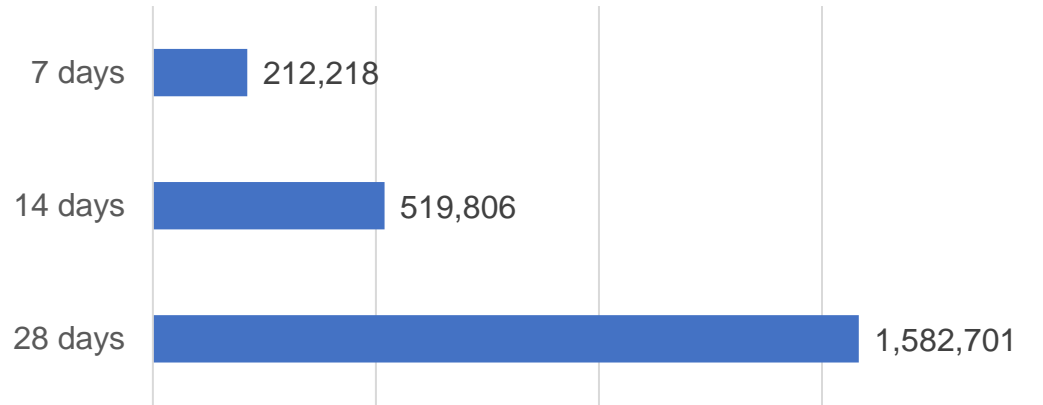
\*People become eligible for a fourth dose three months after their third dose. Individuals may belong to multiple groups and could be represented in the above multiple times.  
#Aged Care Residents data as at 15 August 2022.

Source: Australian Immunisation Register

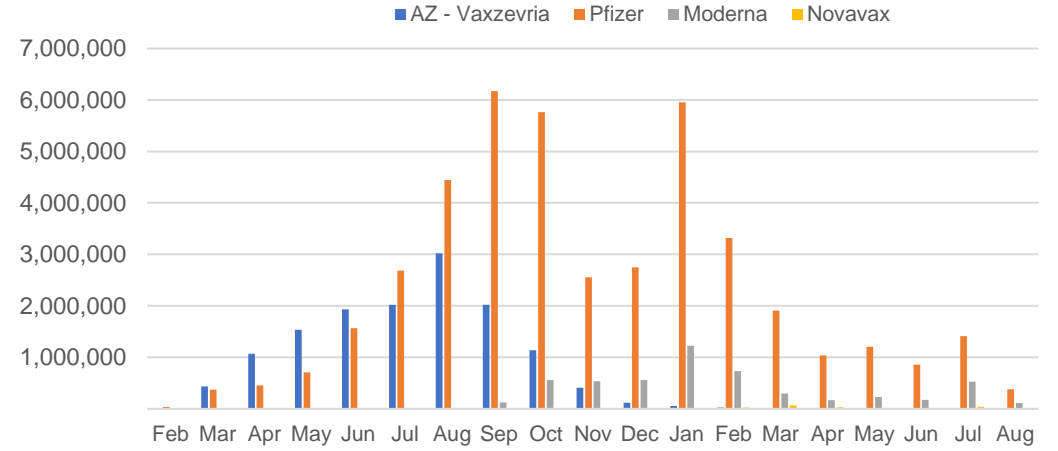
# Vaccine milestone charts

Data as at:  
14 Aug 2022  
Updated weekly

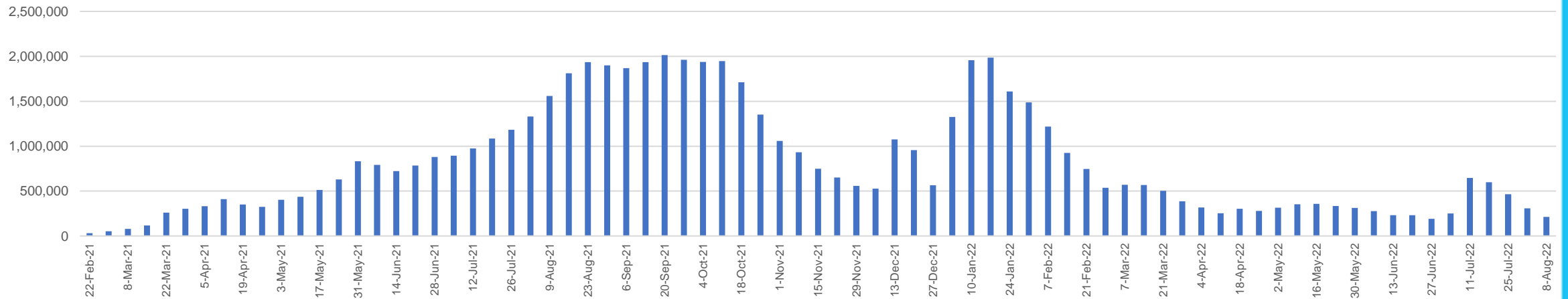
Doses Reported



Doses by administration month and vaccine type



Doses Administered by Week



\*Sourced from the Australian Immunisation Register.

Data as at:  
14 Aug 2022  
Updated weekly

## Doses by age and jurisdiction

|                           | AUS        | ACT     | NSW       | NT      | QLD       | SA        | TAS     | VIC       | WA        |
|---------------------------|------------|---------|-----------|---------|-----------|-----------|---------|-----------|-----------|
| 5 to 11 - dose 1          | 1,185,694  | 31,607  | 355,456   | 12,902  | 204,656   | 82,916    | 28,174  | 322,455   | 138,548   |
| 5 to 11 - dose 2          | 924,824    | 27,741  | 285,207   | 8,840   | 153,537   | 65,461    | 23,348  | 251,302   | 104,501   |
| 5 to 11 - population      | 2,276,638  | 39,789  | 716,460   | 24,750  | 478,731   | 148,816   | 45,033  | 578,499   | 244,154   |
| 5 to 11 % with dose 1     | 52.08%     | 79.44%  | 49.61%    | 52.13%  | 42.75%    | 55.72%    | 62.56%  | 55.74%    | 56.75%    |
| 5 to 11 % with dose 2     | 40.62%     | 69.72%  | 39.81%    | 35.72%  | 32.07%    | 43.99%    | 51.85%  | 43.44%    | 42.80%    |
| 12 to 15 - dose 1         | 1,042,772  | 20,142  | 320,728   | 10,645  | 203,787   | 67,705    | 22,600  | 272,392   | 114,794   |
| 12 to 15 - dose 2         | 985,657    | 19,586  | 306,335   | 9,581   | 189,987   | 63,940    | 21,473  | 260,108   | 106,196   |
| 12 to 15 - population     | 1,243,990  | 19,693  | 390,330   | 13,060  | 270,146   | 82,747    | 26,308  | 308,611   | 132,869   |
| 12 to 15 % with dose 1    | 83.82%     | >99%    | 82.17%    | 81.51%  | 75.44%    | 81.82%    | 85.91%  | 88.26%    | 86.40%    |
| 12 to 15 % with dose 2    | 79.23%     | >99%    | 78.48%    | 73.36%  | 70.33%    | 77.27%    | 81.62%  | 84.28%    | 79.93%    |
| 16 and over - dose 1      | 20,182,662 | 354,649 | 6,362,505 | 173,506 | 3,887,958 | 1,383,508 | 446,890 | 5,191,141 | 2,106,538 |
| 16 and over - dose 2      | 19,836,461 | 348,652 | 6,260,382 | 168,792 | 3,823,311 | 1,353,811 | 437,888 | 5,109,829 | 2,074,812 |
| 16 and over - dose 3      | 14,158,701 | 278,475 | 4,331,890 | 132,516 | 2,464,400 | 1,017,188 | 323,797 | 3,760,854 | 1,720,168 |
| 16 and over - population  | 20,619,959 | 344,037 | 6,565,651 | 190,571 | 4,112,707 | 1,440,400 | 440,172 | 5,407,574 | 2,114,978 |
| 16 and over % with dose 1 | 97.88%     | >99%    | 96.91%    | 91.05%  | 94.54%    | 96.05%    | >99%    | 96.00%    | >99%      |
| 16 and over % with dose 2 | 96.20%     | >99%    | 95.35%    | 88.57%  | 92.96%    | 93.99%    | >99%    | 94.49%    | 98.10%    |
| 16 and over % with dose 3 | 68.67%     | 80.94%  | 65.98%    | 69.54%  | 59.92%    | 70.62%    | 73.56%  | 69.55%    | 81.33%    |
| 30 and over - dose 1      | 15,790,878 | 274,254 | 5,005,395 | 128,183 | 3,039,559 | 1,101,406 | 355,172 | 4,055,976 | 1,650,179 |
| 30 and over - dose 2      | 15,559,812 | 270,239 | 4,935,473 | 125,567 | 2,997,543 | 1,082,662 | 349,411 | 4,000,418 | 1,629,092 |
| 30 and over - dose 3      | 11,997,597 | 228,307 | 3,708,018 | 104,056 | 2,148,465 | 871,348   | 279,931 | 3,145,825 | 1,415,942 |
| 30 and over - dose 4      | 4,420,143  | 89,954  | 1,419,652 | 20,265  | 863,044   | 349,152   | 119,266 | 1,089,815 | 445,226   |
| 30 and over - population  | 15,805,337 | 258,148 | 5,042,108 | 140,343 | 3,148,826 | 1,126,262 | 349,703 | 4,096,873 | 1,639,833 |
| 30 and over % with dose 1 | >99%       | >99%    | >99%      | 91.34%  | 96.53%    | 97.79%    | >99%    | >99%      | >99%      |
| 30 and over % with dose 2 | 98.45%     | >99%    | 97.89%    | 89.47%  | 95.20%    | 96.13%    | >99%    | 97.65%    | >99%      |
| 30 and over % with dose 3 | 75.91%     | 88.44%  | 73.54%    | 74.14%  | 68.23%    | 77.37%    | 80.05%  | 76.79%    | 86.35%    |
| 30 and over % with dose 4 | 27.97%     | 34.85%  | 28.16%    | 14.44%  | 27.41%    | 31.00%    | 34.10%  | 26.60%    | 27.15%    |
| 65 and over - dose 1      | 4,469,919  | 65,412  | 1,448,284 | 20,699  | 867,032   | 357,353   | 117,402 | 1,115,254 | 436,448   |
| 65 and over - dose 2      | 4,409,855  | 64,400  | 1,428,941 | 20,362  | 856,916   | 352,822   | 116,085 | 1,099,588 | 431,581   |
| 65 and over - dose 3      | 3,985,045  | 60,096  | 1,278,971 | 18,140  | 774,998   | 324,896   | 107,567 | 986,300   | 403,178   |
| 65 and over - dose 4      | 2,775,013  | 46,772  | 886,505   | 10,165  | 557,331   | 233,273   | 78,651  | 668,408   | 277,289   |
| 65 and over - population  | 4,192,882  | 57,745  | 1,366,640 | 20,994  | 831,881   | 338,903   | 110,799 | 1,057,498 | 407,530   |
| 65 and over % with dose 1 | >99%       | >99%    | >99%      | 98.59%  | >99%      | >99%      | >99%    | >99%      | >99%      |
| 65 and over % with dose 2 | >99%       | >99%    | >99%      | 96.99%  | >99%      | >99%      | >99%    | >99%      | >99%      |
| 65 and over % with dose 3 | 95.04%     | >99%    | 93.59%    | 86.41%  | 93.16%    | 95.87%    | 97.08%  | 93.27%    | 98.93%    |
| 65 and over % with dose 4 | 66.18%     | 81.00%  | 64.87%    | 48.42%  | 67.00%    | 68.83%    | 70.99%  | 63.21%    | 68.04%    |

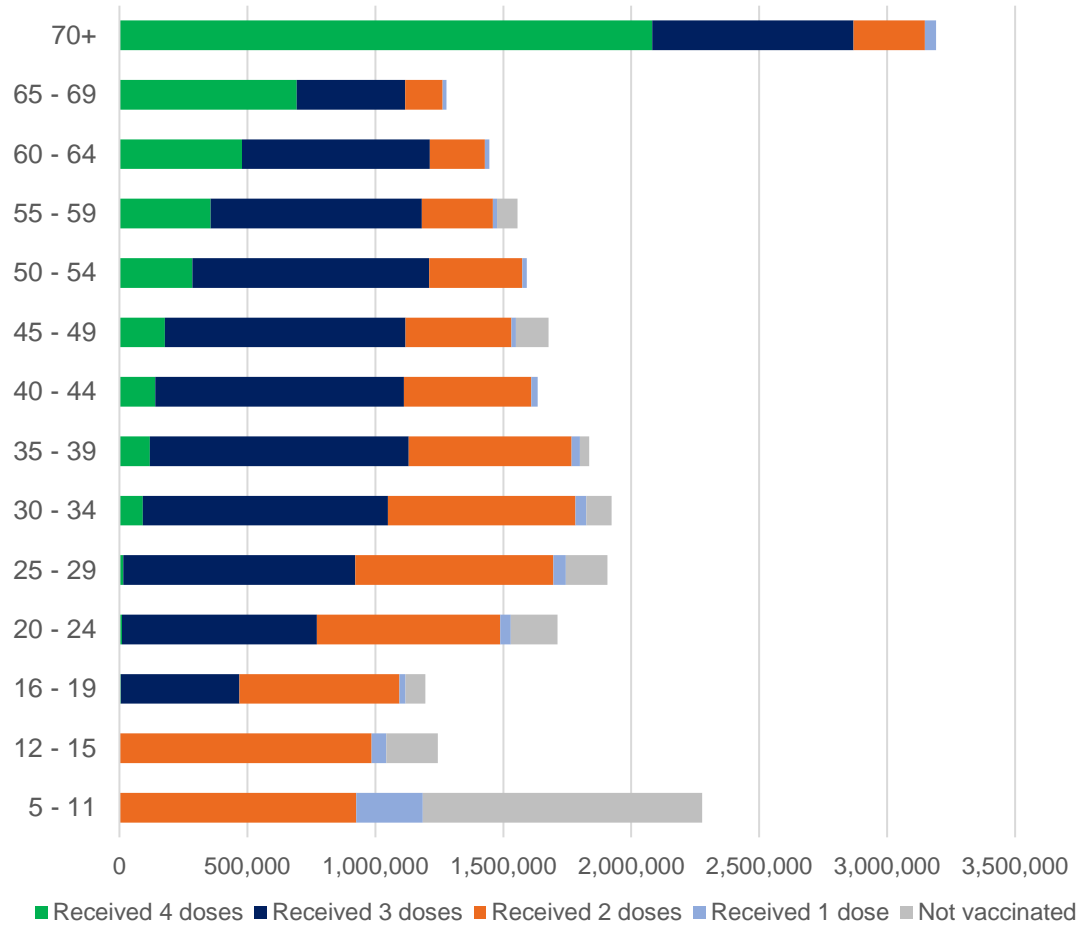
\*National population will not equal sum of listed jurisdictions due to a small number of people counted in national population residing in some 'other' territories. Sum of state doses will not add to national total as some records are unable to be geocoded to a State or Territory.

Doses sourced from Australian Immunisation Register, population from ABS ERP June 2020

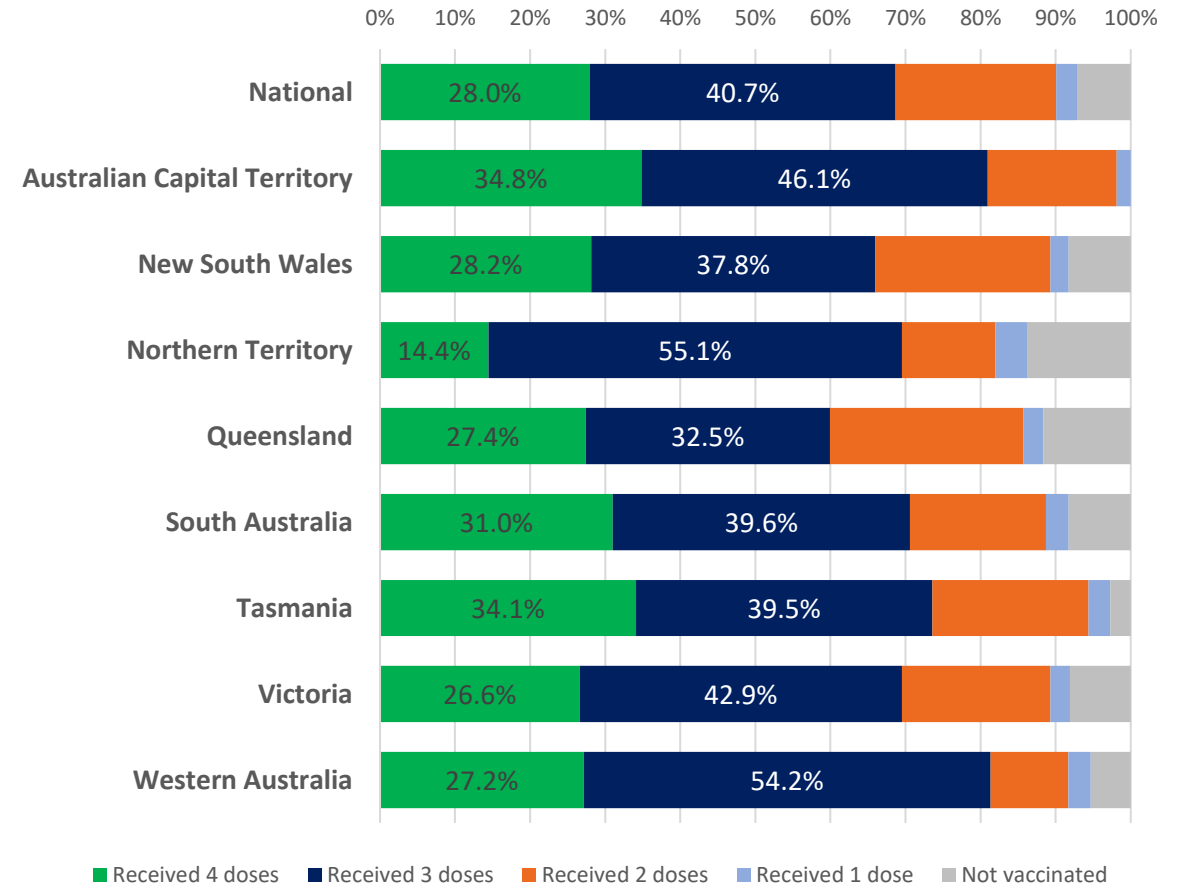
Data as at:  
14 Aug 2022  
Updated weekly

# Vaccinations by age and location

Number of people vaccinated by age

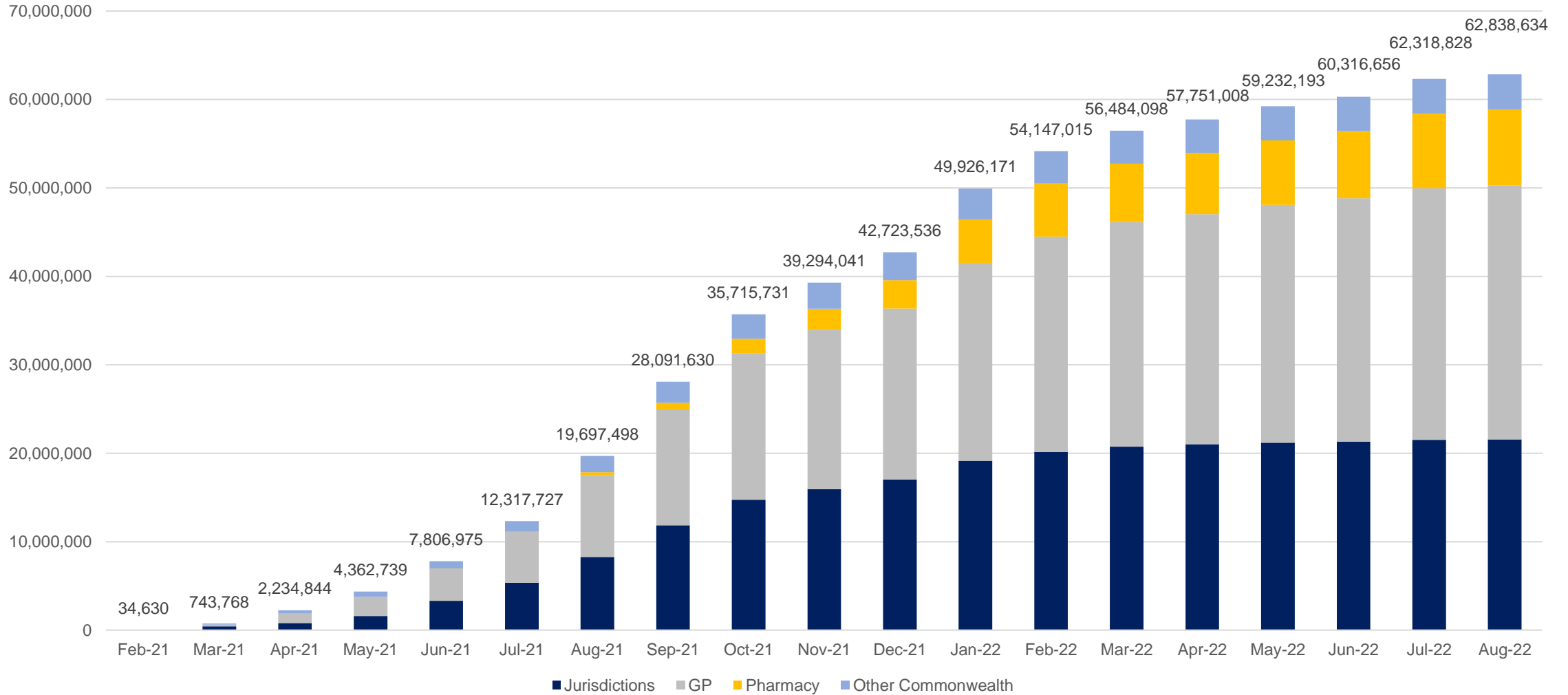


Individuals vaccinated by residential location



# Cumulative doses administered by channel

Data as at:  
14 Aug 2022  
Updated weekly



Source: Australian Immunisation Register



# Commonwealth primary care

Data as at:  
14 Aug 2022  
Updated weekly

Australia's COVID-19  
Vaccine Program



## Primary care vaccine administration sites

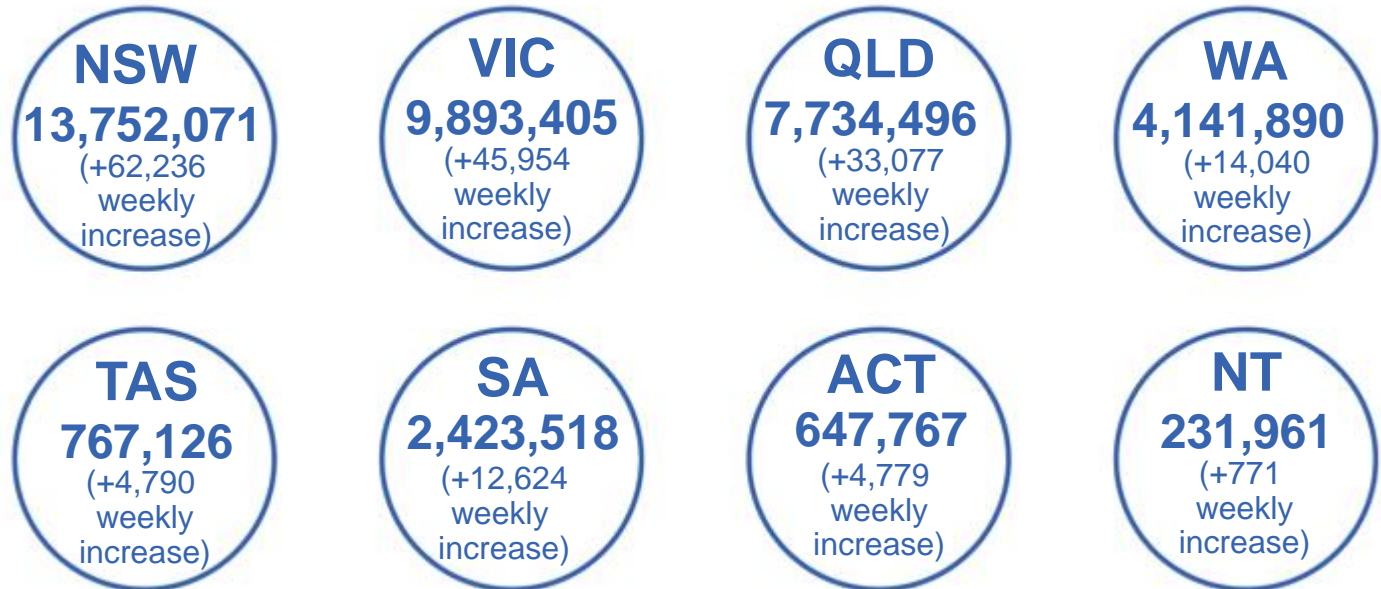
|              |            |            |              |
|--------------|------------|------------|--------------|
| <b>5,684</b> | <b>116</b> | <b>179</b> | <b>3,620</b> |
| GPs          | CVCs       | ACCHS      | Pharmacies   |



**39,940,808** total vaccine doses administered  
primary care settings as at 14 August  
**+186,870** recorded in the last week

## Primary care vaccinations by provider type

|   | Doses administered | 7 day increase |
|---|--------------------|----------------|
| <b>General Practice*</b><br>includes other Commonwealth | 31,334,460         | 109,866        |
| <b>Pharmacy</b>   | 8,606,348          | 77,004         |



**348,574**

doses administered to persons residing in other territories or with missing residential information

\*General practice includes Commonwealth Vaccination Clinics, Aboriginal Community Health Centres, Royal Flying Doctor Service and other Commonwealth vaccination facilities

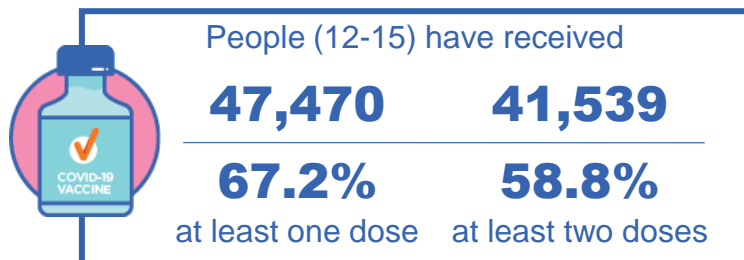
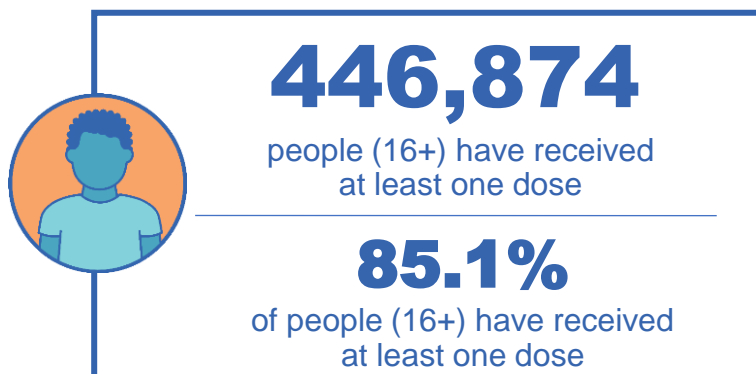
Source: Australian Immunisation Register

# Aboriginal and Torres Strait Islander peoples

## Number of people vaccinated

Data as at:  
14 Aug 2022  
Updated weekly

Australia's COVID-19  
Vaccine Program



**178** Aboriginal community controlled health services (ACCHS) sites

|            |            |           |            |           |            |            |           |
|------------|------------|-----------|------------|-----------|------------|------------|-----------|
| 0#         | 50         | 27        | 44         | 12        | 3          | 21         | 21        |
| <b>ACT</b> | <b>NSW</b> | <b>NT</b> | <b>QLD</b> | <b>SA</b> | <b>TAS</b> | <b>VIC</b> | <b>WA</b> |

| Medicare Address State <sup>##</sup> | Individuals Dose 1 %<br>(16+) | Individuals Dose 2 %<br>(16+) | Individuals Dose 3 %<br>Eligible (aged 16+) | Individuals Dose 4 %<br>Eligible (aged 30+) |
|--------------------------------------|-------------------------------|-------------------------------|---|---|
| Australian Capital Territory         | 91.8%                         | 89.6%                         | 64.2%                                       | 35.4%                                       |
| New South Wales                      | 87.4%                         | 85.5%                         | 51.8%                                       | 34.0%                                       |
| Northern Territory                   | 89.7%                         | 85.5%                         | 68.4%                                       | 19.8%                                       |
| Queensland                           | 82.0%                         | 78.3%                         | 48.2%                                       | 33.0%                                       |
| South Australia                      | 80.8%                         | 75.3%                         | 60.0%                                       | 33.5%                                       |
| Tasmania                             | 89.0%                         | 86.4%                         | 59.9%                                       | 36.6%                                       |
| Victoria                             | 90.5%                         | 88.5%                         | 61.5%                                       | 31.6%                                       |
| Western Australia                    | 86.9%                         | 81.2%                         | 64.7%                                       | 23.4%                                       |
| Unknown/Other Territories            | 71.7%                         | 66.5%                         | 48.4%                                       | 18.4%                                       |
| <b>Totals</b>                        | <b>85.1%</b>                  | <b>81.7%</b>                  | <b>55.2%</b>                                | <b>30.2%</b>                                |

Source: Australian Immunisation Register

\*Identifying as Aboriginal and Torres Strait Islander is optional and the estimated population may be under reported.

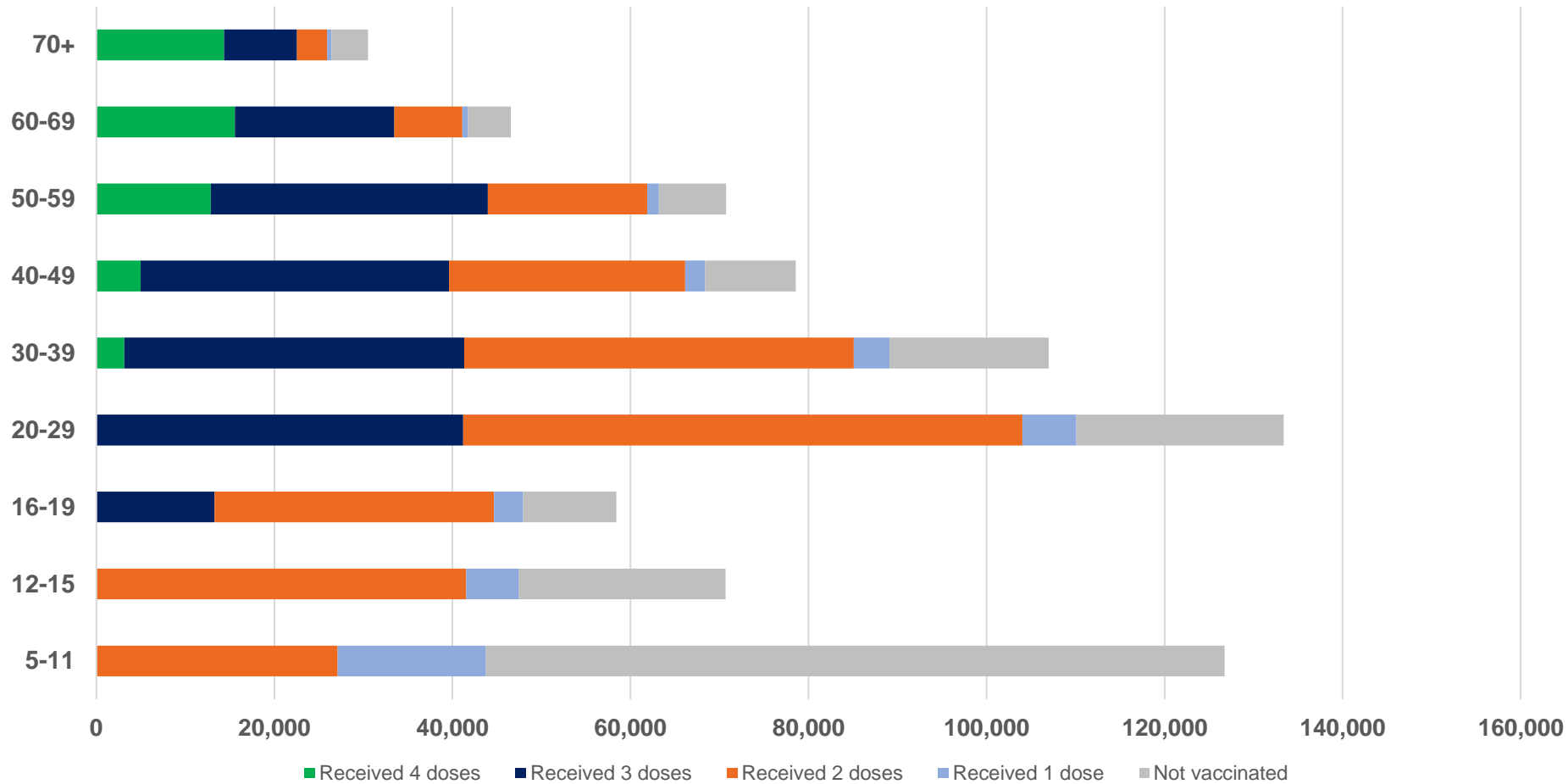
\*\*Includes all Aboriginal and Torres Strait Islander peoples who have received a vaccination, not limited to those administered in an ACCHS setting.

#ACCHS in the ACT are currently operating as Commonwealth Vaccine Clinics so not included to avoid double counting.

##The above table includes all identified Aboriginal and Torres Strait Islander people who are aged 16 and above by their state of residence.

# Aboriginal and Torres Strait Islander peoples Number of people vaccinated by age

Data as at:  
14 Aug 2022  
Updated weekly



Source: Australian Immunisation Register

# Individuals with Culturally and Linguistically Diverse (CALD) backgrounds data

Data as at:  
31 Jul 2022  
Updated weekly

Australia's COVID-19  
Vaccine Program

## People over the age of 16

| CALD population *                            | Total number of individuals in cohort | % People with at least one dose | % People who received two doses | % of eligible people who received three or more doses |
|--|---------------------------------------|---------------------------------|---------------------------------|---|
| General population                           | 20,619,959                            | >95.0%                          | >95.0%                          | 71.3%   |
| People born overseas                         | 4,451,667                             | 94.4%                           | 93.8%                           | 72.3%   |
| Speaks a language other than English at home | 4,106,196                             | 94.0%                           | 93.3%                           | 68.3%   |

|     | General population       |                          |   | Born Overseas            |                          |   | Speaks a language other than English at home |                          |   |
|-----|--------------------------|--------------------------|---|--------------------------|--------------------------|---|--|--------------------------|---|
|     | % with at least one dose | % who received two doses | % of eligible people who received three doses | % with at least one dose | % who received two doses | % of eligible people who received three doses | % with at least one dose                     | % who received two doses | % of eligible people who received three doses |
| ACT | >95.0%                   | >95.0%                   | 79.7%   | >95.0%                   | >95.0%                   | 78.1%   | >95.0%                                       | >95.0%                   | 75.5%   |
| NSW | >95.0%                   | >95.0%                   | 69.0%   | 94.8%                    | 94.2%                    | 69.6%   | 94.1%  | 93.4%                    | 65.0%   |
| NT  | 91.3%                    | 88.8%                    | 78.5%   | >95.0%                   | 94.7%                    | 87.7%   | 94.1%  | 93.6%                    | 86.5%   |
| Qld | 94.5%                    | 92.9%                    | 64.3%   | 92.1%                    | 91.3%                    | 66.7%   | 92.4%  | 91.5%                    | 63.2%   |
| SA  | >95.0%                   | 93.9%                    | 75.1%   | 92.6%                    | 91.6%                    | 74.4%   | 91.6%  | 90.5%                    | 70.7%   |
| Tas | >95.0%                   | >95.0%                   | 73.8%   | 93.5%                    | 92.9%                    | 75.4%   | 93.6%  | 92.9%                    | 71.5%   |
| Vic | >95.0%                   | 94.4%                    | 73.5%   | >95.0%                   | 94.6%                    | 72.6%   | 94.6%  | 94.0%                    | 68.9%   |
| WA  | >95.0%                   | >95.0%                   | 83.0%   | >95.0%                   | 94.5%                    | 85.1%   | >95.0%                                       | 94.5%                    | 83.3%   |

\*Individuals with Culturally and Linguistically Diverse (CALD) backgrounds are as reported in the 2021 Census, excluding those who have since departed Australia; those born in the UK, Ireland or NZ; and Aboriginal and/or Torres Strait Islander peoples. There is overlap across CALD cohorts where individuals may have reported they had more than one CALD characteristic in the 2021 Census.

Small negative changes may appear when compared with the previous report due to perturbation, in particular for small population groups.

Source: Australian Immunisation Register linked to the Multi-Agency Data Integration Project (Census 2021 characteristics)

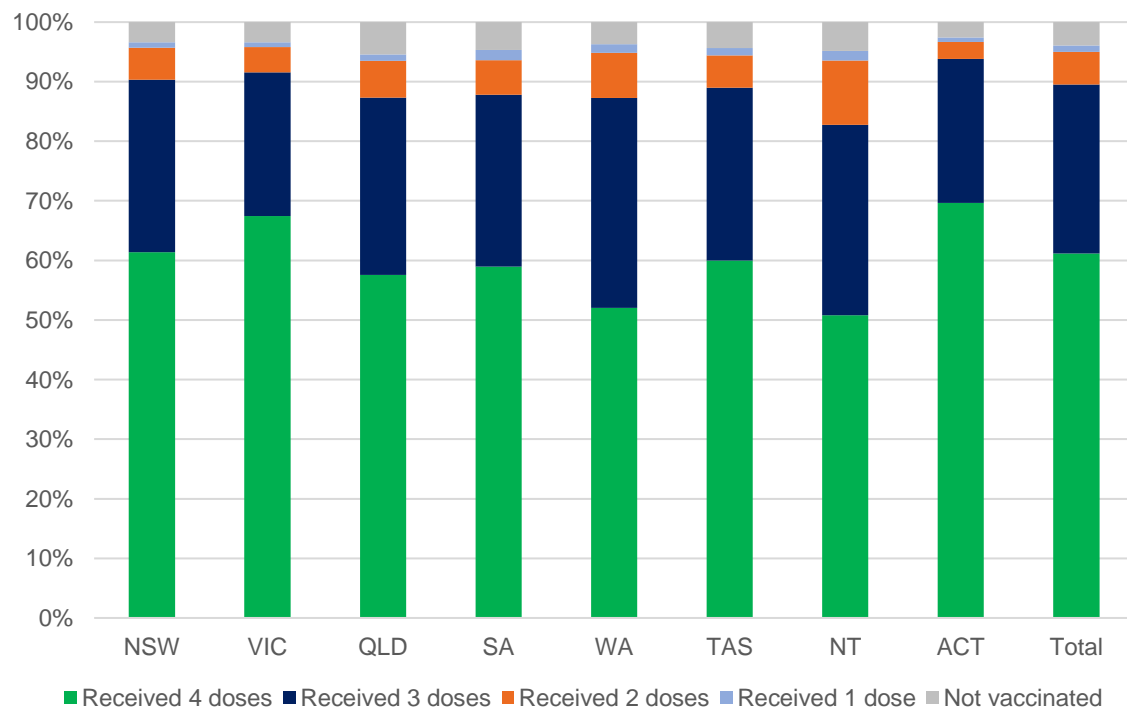
# Residential aged care vaccination rollout

Residential aged care facilities status

|                               |                                |                         |                        |
|-------------------------------|--------------------------------|-------------------------|------------------------|
| <b>171,860</b>                | <b>169,969</b>                 | <b>160,209</b>          | <b>109,444</b>         |
| People with at least one dose | People with at least two doses | People with three doses | People with four doses |

Data as at: **11 Aug 2022**  
Updated weekly

**Aged care resident vaccinations\***



**Aged care worker vaccinations**

| Jurisdictions | Total workers with at least one dose | Workers with at least two doses | % Workers with at least one dose | % Workers with at least two doses |
|---------------|--------------------------------------|---------------------------------|----------------------------------|-----------------------------------|
| NSW           | 77,967                               | 77,838                          | 99.9%                            | 99.7%                             |
| VIC           | 71,277                               | 71,277                          | 100.0%                           | 100.0%                            |
| QLD           | 48,984                               | 48,974                          | 100.0%                           | 100.0%                            |
| SA            | 26,695                               | 26,686                          | 100.0%                           | 100.0%                            |
| WA            | 24,767                               | 24,761                          | 100.0%                           | 100.0%                            |
| TAS           | 7,518                                | 7,518                           | 100.0%                           | 100.0%                            |
| NT            | 898                                  | 898                             | 100.0%                           | 100.0%                            |
| ACT           | 2,952                                | 2,952                           | 100.0%                           | 100.0%                            |
| <b>Total</b>  | <b>261,058</b>                       | <b>260,904</b>                  | <b>100.0%</b>                    | <b>99.9%</b>                      |

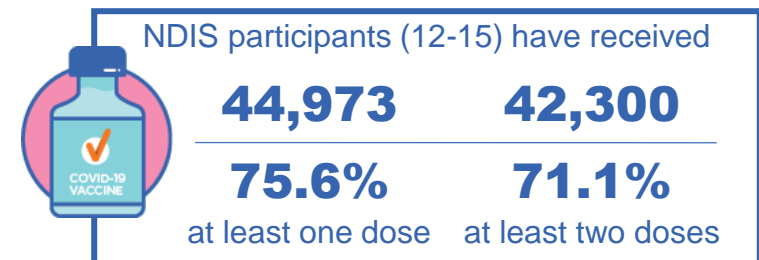
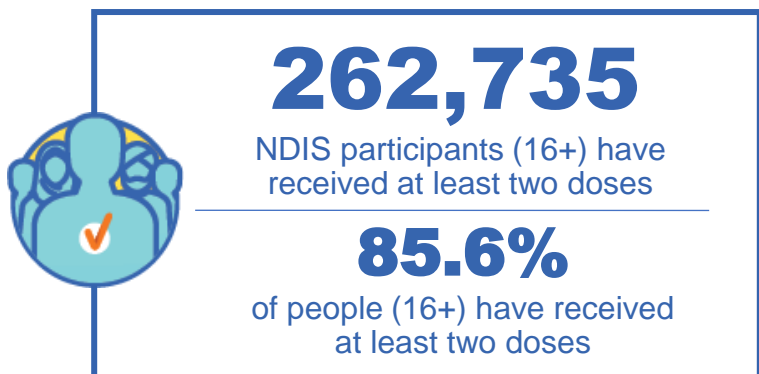
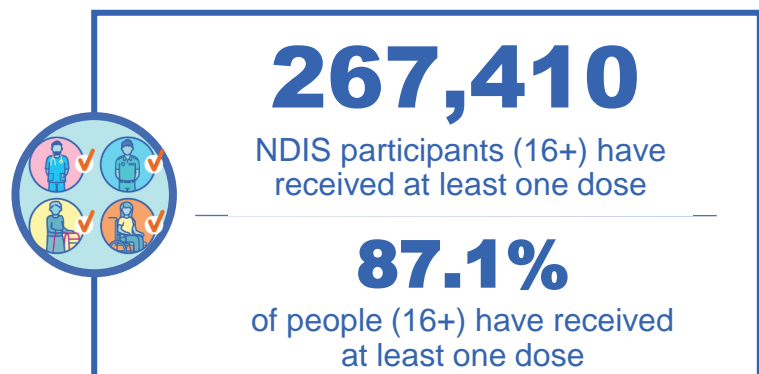
Source: Residential aged care provider self-reported COVID-19 vaccination information and matched AIR data of residents in permanent residential RACFs.

\*Self-reported status updates are provided by facilities at least once per week. Reporting is updated Monday to Friday to encompass different facility updates being made on different days.

# National Disability Insurance Scheme (NDIS) reported vaccinations

Data as at:  
11 Aug 2022  
Updated weekly

Australia's COVID-19  
Vaccine Program



## NDIS participant vaccinations

|          | % People aged 16+ with at least one dose | % People aged 16+ with at least two doses | % People aged 16+ with three doses | % People aged 16+ with four doses |
|----------|--|---|------------------------------------|-----------------------------------|
| ACT      | 89.4%                                    | 88.2%                                     | 83.7%                              | 32.2%                             |
| NSW      | 87.7%                                    | 86.3%                                     | 75.1%                              | 31.2%                             |
| NT       | 78.1%                                    | 75.8%                                     | 78.8%                              | 23.2%                             |
| QLD      | 85.2%                                    | 83.6%                                     | 71.4%                              | 26.1%                             |
| SA       | 84.9%                                    | 83.0%                                     | 78.1%                              | 25.4%                             |
| TAS      | 87.5%                                    | 85.4%                                     | 76.1%                              | 26.2%                             |
| VIC      | 88.2%                                    | 86.8%                                     | 77.6%                              | 28.2%                             |
| WA       | 88.4%                                    | 86.7%                                     | 82.1%                              | 28.2%                             |
| National | 87.1%                                    | 85.6%                                     | 76.2%                              | 28.4%                             |

Source: Linkage between National Disability Insurance Agency data and the Australian Immunisation Register. Total NDIS participant numbers as at 01 August. Australian Immunisation Register data as at 10 August. Includes all participants regardless of residence type.

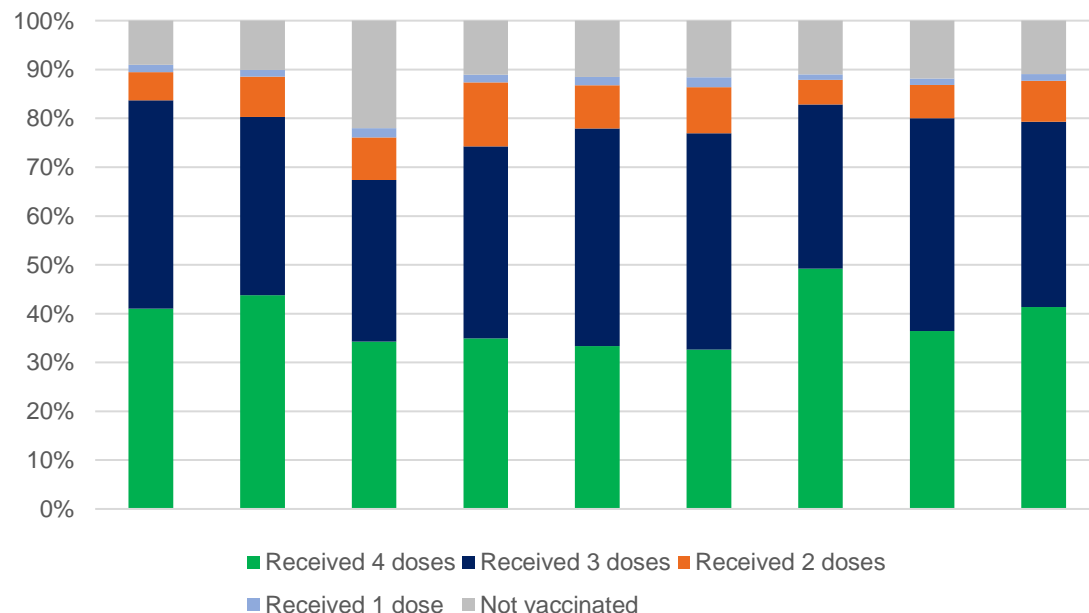
# National Disability Insurance Scheme (NDIS) reported vaccinations

Data as at:  
11 Aug 2022  
Updated weekly

Australia's COVID-19  
Vaccine Program

| NATIONAL   | People with at least one dose | People with at least two doses | Total number of individuals in cohort | % People with at least one dose | % People with at least two doses |
|--|-------------------------------|--------------------------------|---------------------------------------|---------------------------------|----------------------------------|
| NDIS participants living in disability accommodation | 21,112                        | 20,780                         | 23,726                                | 89.0%                           | 87.6%                            |

## NDIS participants in disability and aged care accommodation



Source: Linkage between National Disability Insurance Agency data and the Australian Immunisation Register. Includes participants residing in disability accommodation only.  
Source: Total NDIS participant numbers as at 01 August. Participant data as at 10 August. Australian Immunisation Register data as at 10 August. Worker data as at 11 August.

## NDIS workforce vaccinations

|              | NDIS workers with at least one dose | NDIS workers with at least two doses | % NDIS workers with at least one dose | % NDIS workers with at least two doses |
|--------------|-------------------------------------|--------------------------------------|---------------------------------------|--|
| NSW          | 128,430                             | 123,786                              | 98.3%                                 | 94.8%                                  |
| VIC          | 117,906                             | 115,017                              | 97.8%                                 | 95.4%                                  |
| QLD          | 71,499                              | 70,660                               | 97.9%                                 | 96.8%                                  |
| WA           | 34,548                              | 33,158                               | 99.0%                                 | 95.0%                                  |
| SA           | 35,736                              | 34,290                               | 98.7%                                 | 94.7%                                  |
| TAS          | 12,520                              | 12,189                               | 98.5%                                 | 95.9%                                  |
| ACT          | 12,325                              | 12,300                               | 99.8%                                 | 99.6%                                  |
| NT           | 3,980                               | 3,833                                | 99.6%                                 | 95.9%                                  |
| <b>TOTAL</b> | <b>416,944</b>                      | <b>405,233</b>                       | <b>98.3%</b>                          | <b>95.5%</b>                           |

Source: the NDIS Commission has established a requirement for registered NDIS providers who provide intensive disability support services to report on the vaccination status of workers they employ, or otherwise engage, to deliver NDIS-funded supports and services, and who are required to be vaccinated in accordance with in-force state and territory public health orders. The statistics reflect data reported to the NDIS Commission by registered NDIS providers and should be considered indicative and subject to change

Note: Some registered NDIS providers are yet to report on the vaccination status of their workforce. The NDIS Commission is working with those providers around reporting requirements.

Remaining workers not included include those exempt from vaccination requirements, workers whose vaccination status is not yet verified by the provider (such as workers on leave) and provider reporting anomalies.