



Australian Government

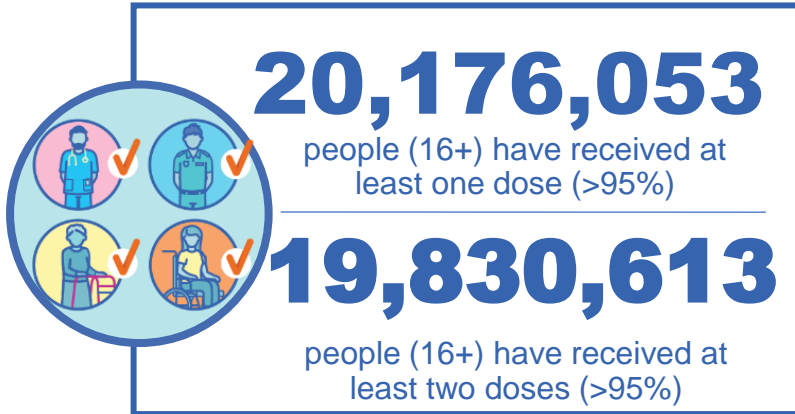
Department of Health and Aged Care

COVID-19 Vaccine Roll-out

10 August 2022

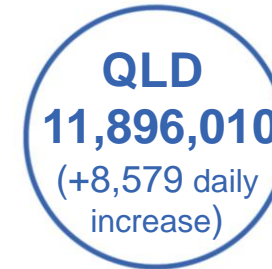
Data as at:
09 Aug 2022

Total vaccine doses



62,707,842 total vaccine doses administered nationally as at 09 August

+42,219 recorded in the last 24 hours

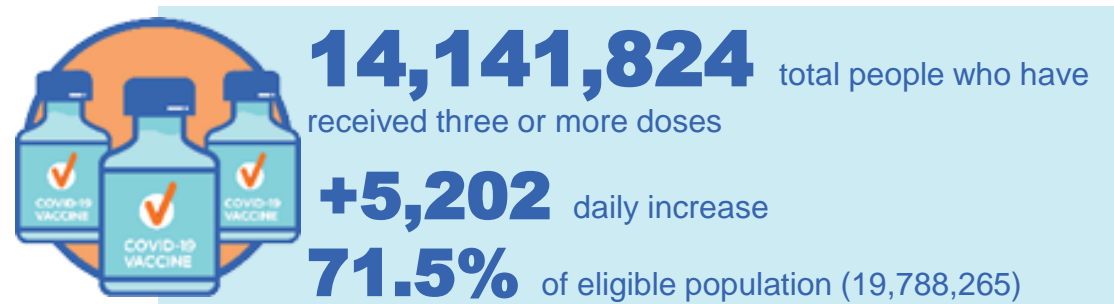
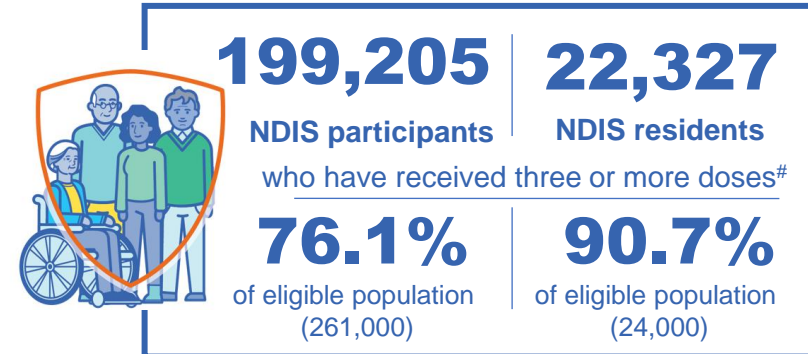
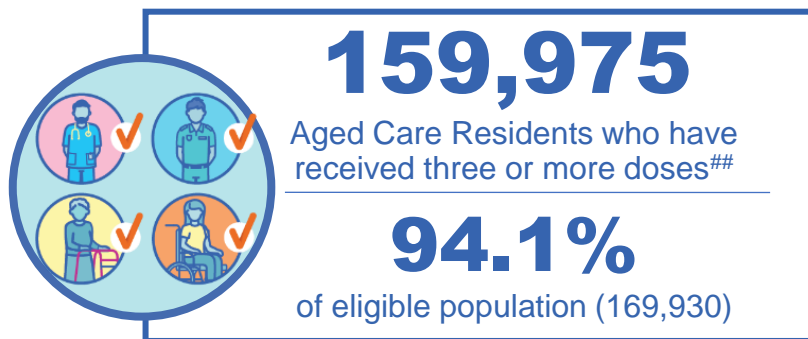
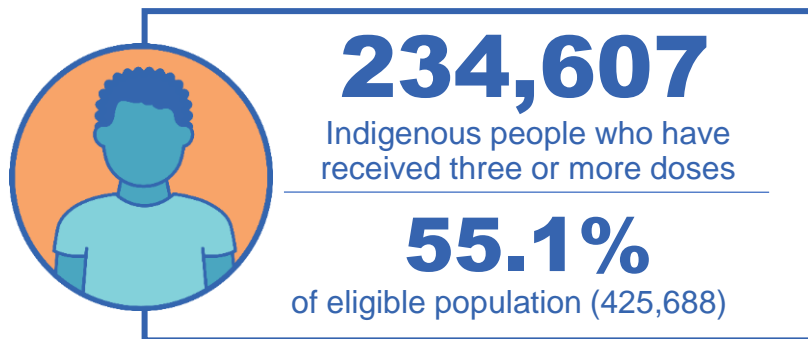


*Administration state breakdown indicates state in which a vaccine was administered

Source: Australian Immunisation Register

Third Doses

Data as at:
09 Aug 2022



	Number of People	Daily Increase	% of Eligible
NSW	4,326,154	1,633	69.2%
VIC	3,757,383	1,159	73.7%
QLD	2,461,312	1,101	64.6%
WA	1,719,238	277	83.0%
SA	1,015,863	357	75.3%
TAS	323,358	112	74.0%
ACT	278,278	82	79.9%
NT	132,474	<10	78.7%


127,764 doses administered to persons residing in other territories or with missing residential information

*People may belong to multiple groups and could be represented in the above breakdowns multiple times.
#NDIS participants data as at 08 August 2022. ##Aged Care Residents data as at 08 August 2022.

Source: Australian Immunisation Register

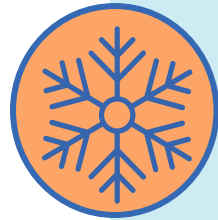
Data as at:
09 Aug 2022

Fourth Doses



108,143
Aged Care Residents who have received four or more doses#

80.3%
of eligible population (134,753)



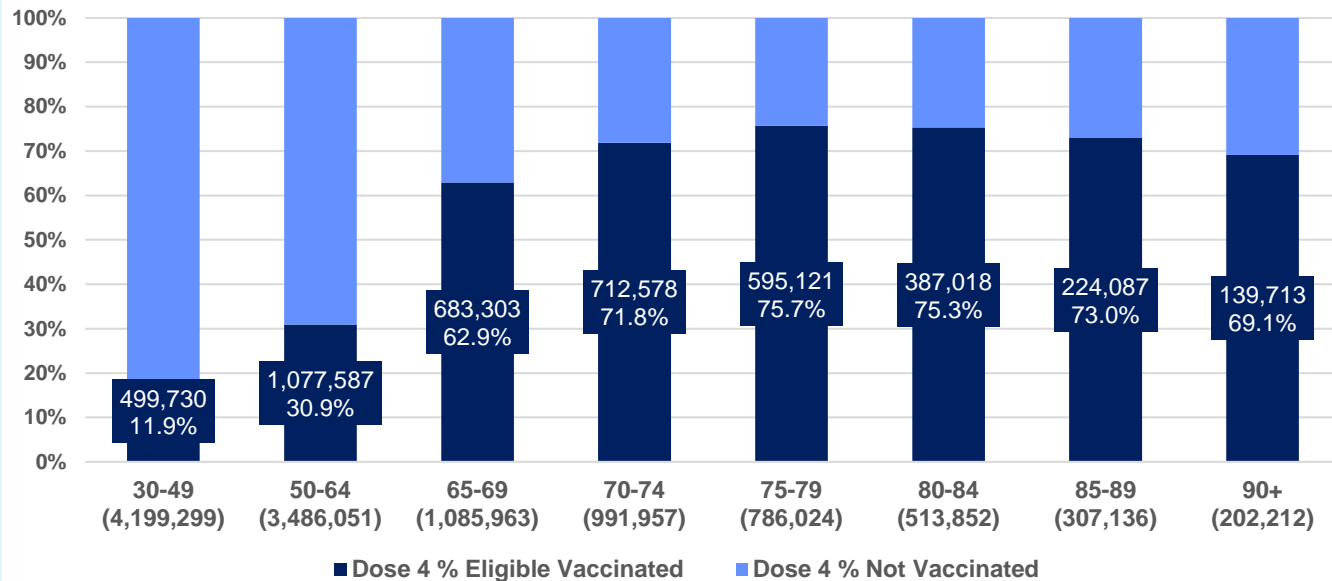
4,347,421
+33,724
37.3%
2,741,820
70.5%

total people (16+) who have received four doses
daily increase (16+)

of eligible population (30+) (11,572,494)

total people (65+) who have received four doses
of eligible population (65+) (3,887,144)

% Individuals eligible vaccinated by current age



	Number of People 16+	Daily Increase
ACT	88,267	857
NSW	1,397,231	10,116
NT	19,724	375
QLD	850,685	6,605
SA	343,288	2,375
TAS	116,701	1,042
VIC	1,071,326	8,854
WA	436,943	3,163

23,256 doses administered to persons residing in other territories or with missing residential information

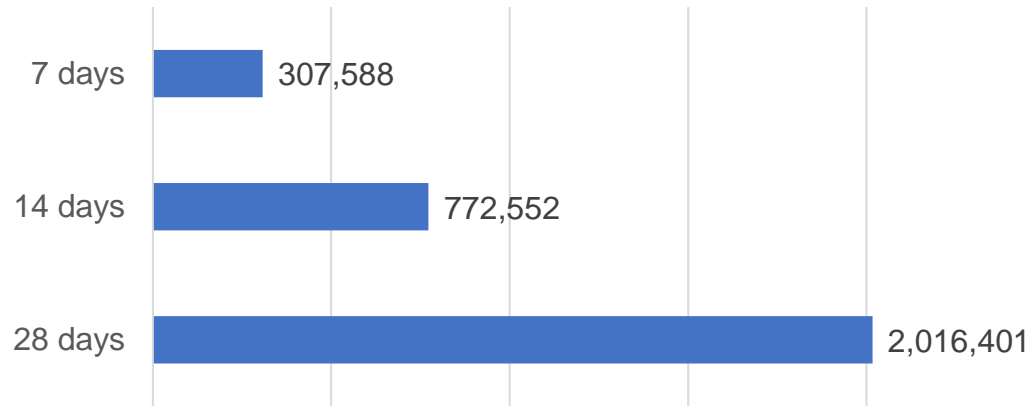
*People become eligible for a fourth dose three months after their third dose. Individuals may belong to multiple groups and could be represented in the above multiple times.
#Aged Care Residents data as at 08 August 2022.

Source: Australian Immunisation Register

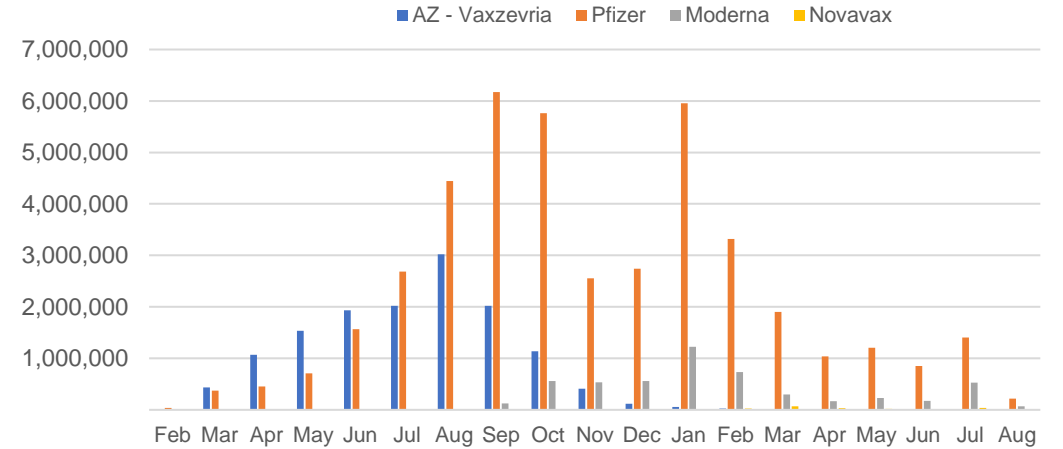
Vaccine milestone charts

Data as at:
07 Aug 2022
Updated weekly

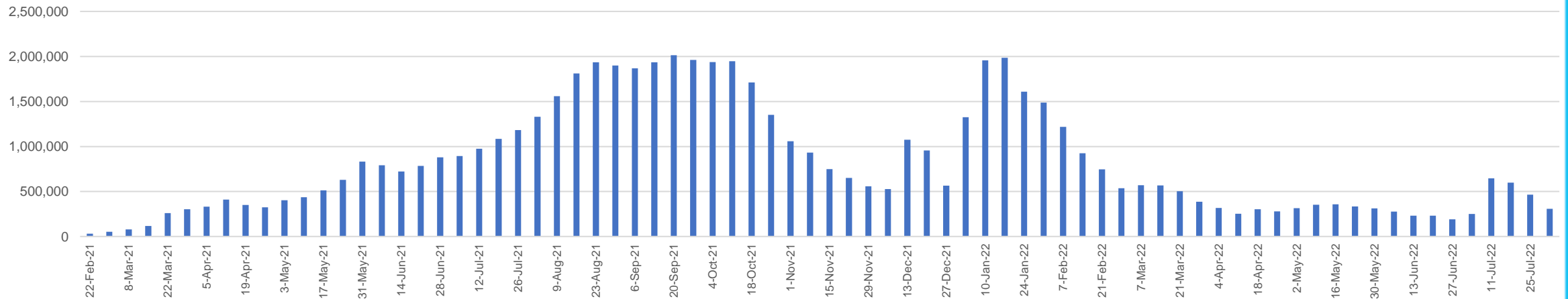
Doses Reported



Doses by administration month and vaccine type



Doses Administered by Week



*Sourced from the Australian Immunisation Register.

Data as at:
07 Aug 2022
Updated weekly

Doses by age and jurisdiction

	AUS	ACT	NSW	NT	QLD	SA	TAS	VIC	WA
5 to 11 - dose 1	1,187,517	31,679	356,123	13,005	205,165	83,088	28,225	323,122	138,992
5 to 11 - dose 2	924,632	27,766	285,092	8,842	153,570	65,411	23,368	251,317	104,540
5 to 11 - population	2,276,638	39,789	716,460	24,750	478,731	148,816	45,033	578,499	244,154
5 to 11 % with dose 1	52.16%	79.62%	49.71%	52.55%	42.86%	55.83%	62.68%	55.86%	56.93%
5 to 11 % with dose 2	40.61%	69.78%	39.79%	35.73%	32.08%	43.95%	51.89%	43.44%	42.82%
12 to 15 - dose 1	1,044,009	20,144	321,174	10,674	204,239	67,839	22,632	272,805	115,029
12 to 15 - dose 2	987,198	19,597	306,849	9,600	190,451	64,076	21,512	260,601	106,416
12 to 15 - population	1,243,990	19,693	390,330	13,060	270,146	82,747	26,308	308,611	132,869
12 to 15 % with dose 1	83.92%	>99%	82.28%	81.73%	75.60%	81.98%	86.03%	88.40%	86.57%
12 to 15 % with dose 2	79.36%	>99%	78.61%	73.51%	70.50%	77.44%	81.77%	84.44%	80.09%
16 and over - dose 1	20,172,509	354,561	6,360,601	173,848	3,886,791	1,383,010	446,805	5,189,136	2,106,240
16 and over - dose 2	19,827,584	348,609	6,258,902	169,132	3,822,175	1,353,331	437,796	5,108,129	2,074,547
16 and over - dose 3	14,131,708	278,119	4,322,745	132,474	2,459,276	1,015,103	323,139	3,755,109	1,718,609
16 and over - population	20,619,959	344,037	6,565,651	190,571	4,112,707	1,440,400	440,172	5,407,574	2,114,978
16 and over % with dose 1	97.83%	>99%	96.88%	91.22%	94.51%	96.02%	>99%	95.96%	>99%
16 and over % with dose 2	96.16%	>99%	95.33%	88.75%	92.94%	93.96%	>99%	94.46%	98.09%
16 and over % with dose 3	68.53%	80.84%	65.84%	69.51%	59.80%	70.47%	73.41%	69.44%	81.26%
30 and over - dose 1	15,780,603	274,161	5,003,146	128,366	3,038,242	1,100,978	355,019	4,053,867	1,649,787
30 and over - dose 2	15,550,416	270,181	4,933,457	125,750	2,996,299	1,082,240	349,258	3,998,534	1,628,697
30 and over - dose 3	11,975,473	228,052	3,700,858	104,015	2,144,330	869,747	279,400	3,140,935	1,414,435
30 and over - dose 4	4,255,050	85,687	1,366,178	18,780	835,153	337,245	114,110	1,047,041	428,428
30 and over - population	15,805,337	258,148	5,042,108	140,343	3,148,826	1,126,262	349,703	4,096,873	1,639,833
30 and over % with dose 1	>99%	>99%	>99%	91.47%	96.49%	97.76%	>99%	98.95%	>99%
30 and over % with dose 2	98.39%	>99%	97.85%	89.60%	95.16%	96.09%	>99%	97.60%	>99%
30 and over % with dose 3	75.77%	88.34%	73.40%	74.11%	68.10%	77.22%	79.90%	76.67%	86.25%
30 and over % with dose 4	26.92%	33.19%	27.10%	13.38%	26.52%	29.94%	32.63%	25.56%	26.13%
65 and over - dose 1	4,463,911	65,350	1,446,459	20,688	866,044	356,933	117,275	1,113,825	435,969
65 and over - dose 2	4,404,179	64,348	1,427,232	20,350	855,982	352,420	115,961	1,098,222	431,115
65 and over - dose 3	3,976,931	60,021	1,276,523	18,105	773,535	324,264	107,342	984,383	402,480
65 and over - dose 4	2,719,943	45,985	868,689	9,811	547,443	228,486	76,743	654,718	272,160
65 and over - population	4,192,882	57,745	1,366,640	20,994	831,881	338,903	110,799	1,057,498	407,530
65 and over % with dose 1	>99%	>99%	>99%	98.54%	>99%	>99%	>99%	>99%	>99%
65 and over % with dose 2	>99%	>99%	>99%	96.93%	>99%	>99%	>99%	>99%	>99%
65 and over % with dose 3	94.85%	>99%	93.41%	86.24%	92.99%	95.68%	96.88%	93.09%	98.76%
65 and over % with dose 4	64.87%	79.63%	63.56%	46.73%	65.81%	67.42%	69.26%	61.91%	66.78%

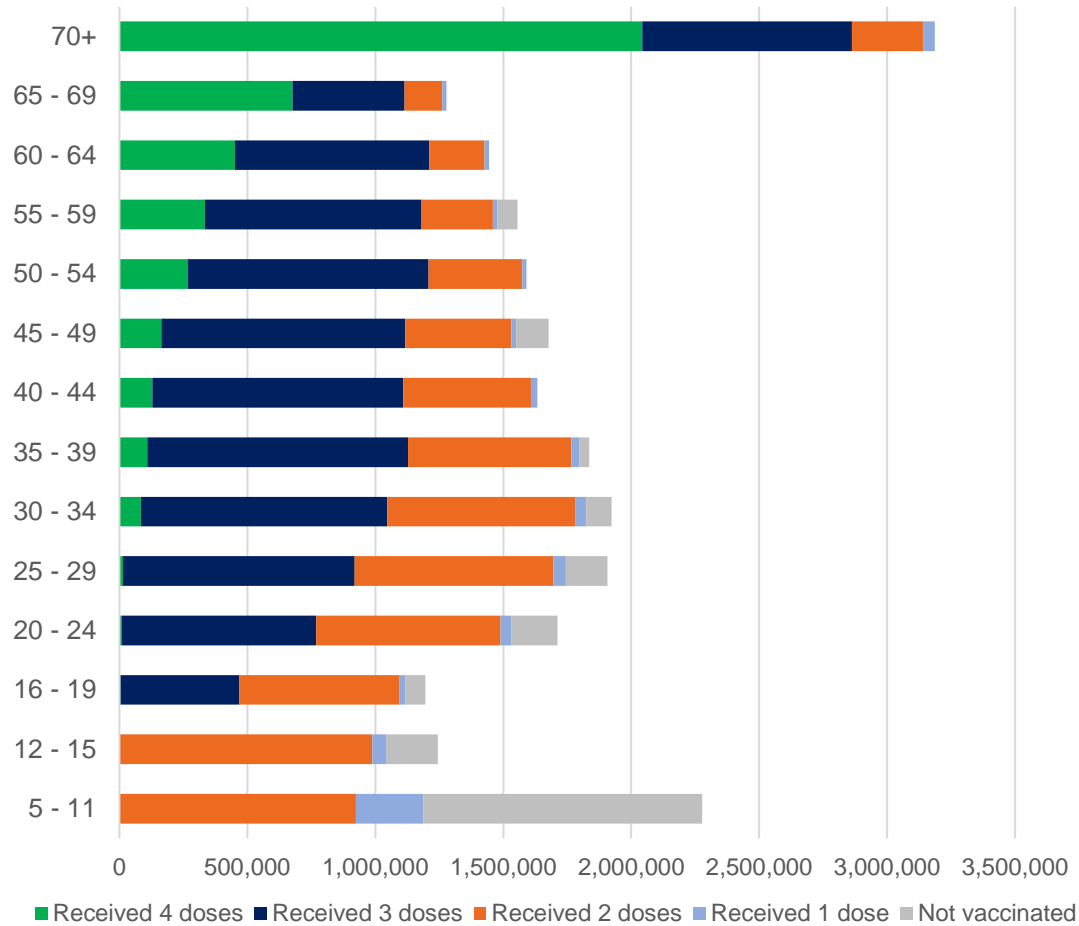
*National population will not equal sum of listed jurisdictions due to a small number of people counted in national population residing in some 'other' territories. Sum of state doses will not add to national total as some records are unable to be geocoded to a State or Territory.

Doses sourced from Australian Immunisation Register, population from ABS ERP June 2020

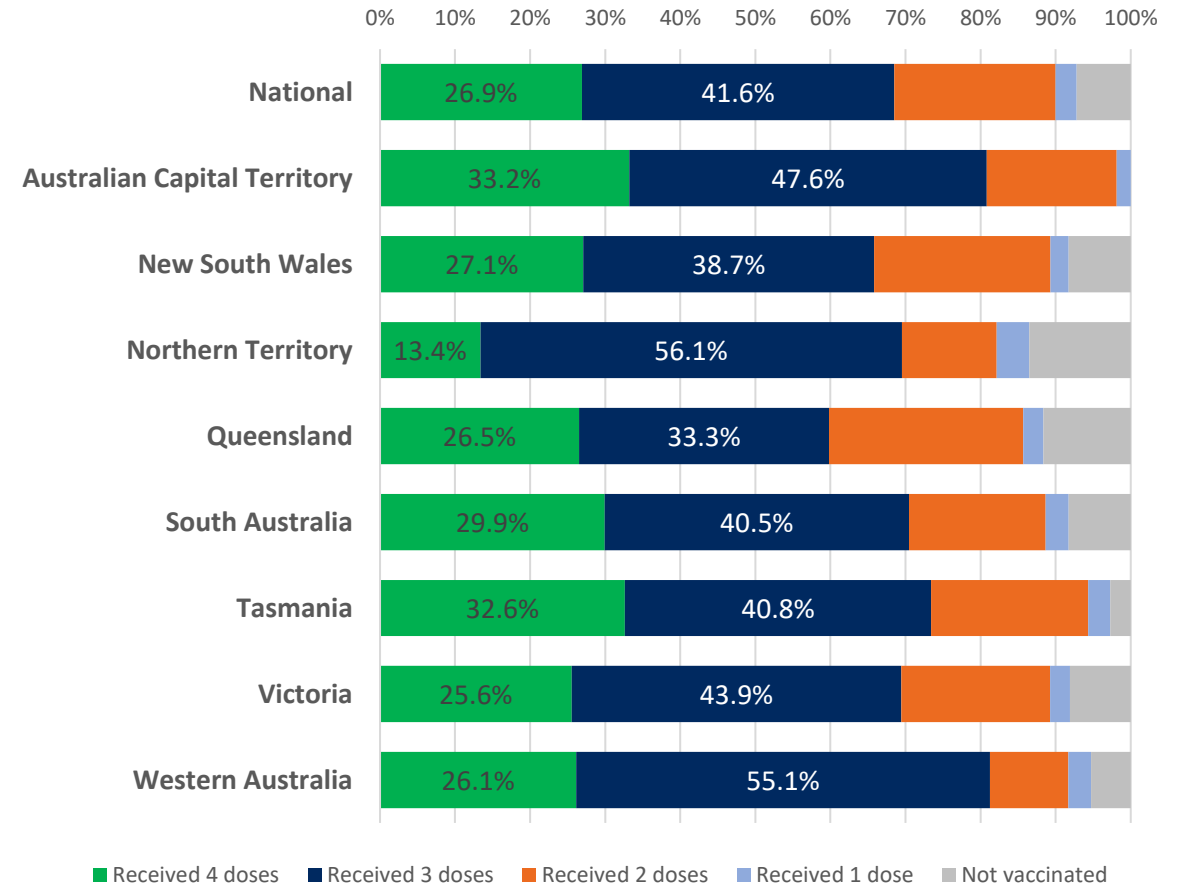
Data as at:
07 Aug 2022
Updated weekly

Vaccinations by age and location

Number of people vaccinated by age

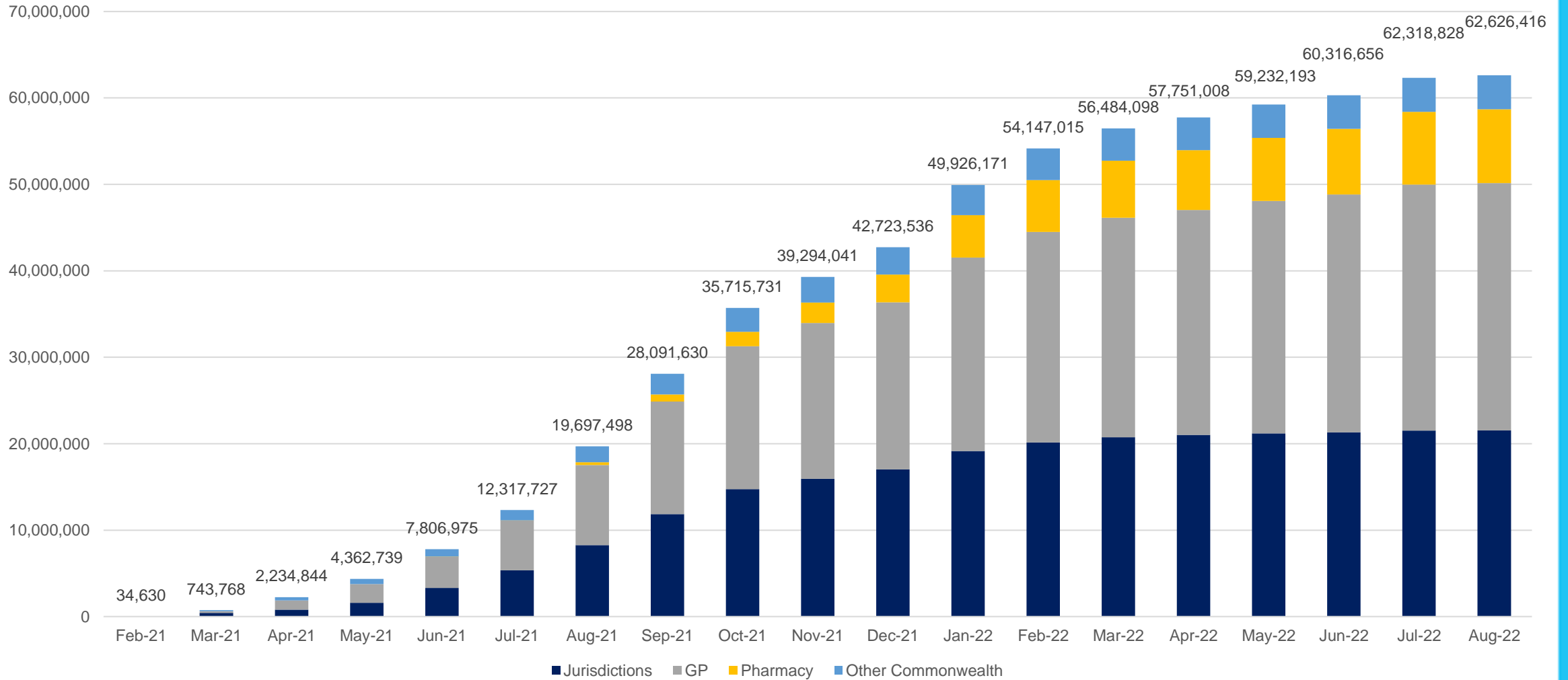


Individuals vaccinated by residential location



Data as at:
07 Aug 2022
Updated weekly

Cumulative doses administered by channel



Source: Australian Immunisation Register

Commonwealth primary care

Data as at:
07 Aug 2022
Updated weekly

Australia's COVID-19
Vaccine Program



Primary care vaccine administration sites

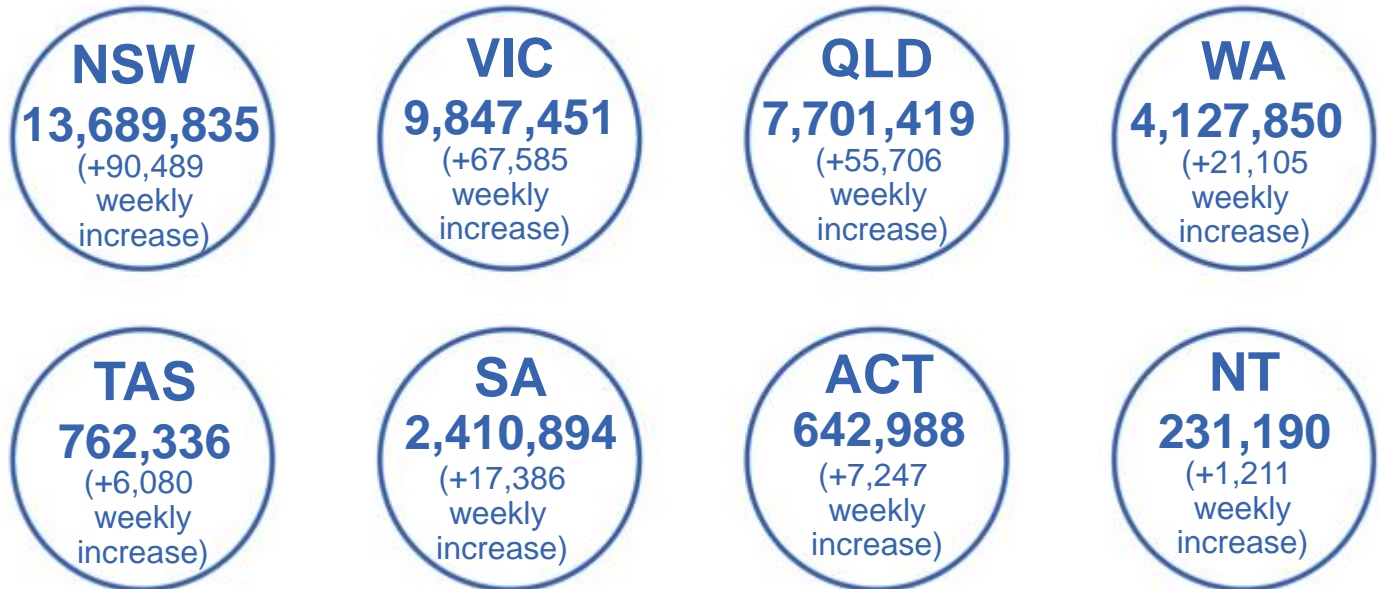
5,685	120	179	3,622
GPs	CVCs	ACCHS	Pharmacies



39,753,938 total vaccine doses administered
primary care settings as at 07 August
+275,255 recorded in the last week

Primary care vaccinations by provider type

	Doses administered	7 day increase
General Practice* includes other Commonwealth	31,224,594	157,917
Pharmacy	8,529,344	117,338



339,975

doses administered to persons residing in other territories or with missing residential information

*General practice includes Commonwealth Vaccination Clinics, Aboriginal Community Health Centres, Royal Flying Doctor Service and other Commonwealth vaccination facilities

Source: Australian Immunisation Register

Aboriginal and Torres Strait Islander peoples

Number of people vaccinated

Data as at:
07 Aug 2022
Updated weekly

Australia's COVID-19
Vaccine Program



446,399

people (16+) have received at least one dose

85.1%

of people (16+) have received at least one dose



428,279

people (16+) have received at least two doses

81.6%

of people (16+) have received at least two doses



People (12-15) have received

47,567

41,633

67.3%

58.9%

at least one dose

at least two doses

179 Aboriginal community controlled health services (ACCHS) sites

0#	50	27	45	12	3	21	21
ACT	NSW	NT	QLD	SA	TAS	VIC	WA

Medicare Address State ^{##}	Individuals Dose 1 % (16+)	Individuals Dose 2 % (16+)	Individuals Dose 3 % Eligible (aged 16+)	Individuals Dose 4 % Eligible (aged 30+)
Australian Capital Territory	91.9%	89.7%	64.1%	33.9%
New South Wales	87.4%	85.4%	51.6%	32.7%
Northern Territory	89.8%	85.6%	68.0%	18.9%
Queensland	81.9%	78.2%	48.0%	31.9%
South Australia	80.8%	75.3%	59.8%	32.2%
Tasmania	89.0%	86.4%	59.6%	34.9%
Victoria	90.5%	88.5%	61.3%	30.5%
Western Australia	86.9%	81.2%	64.4%	22.2%
Unknown/Other Territories	71.2%	66.0%	48.1%	17.4%
Totals	85.1%	81.6%	55.0%	29.0%

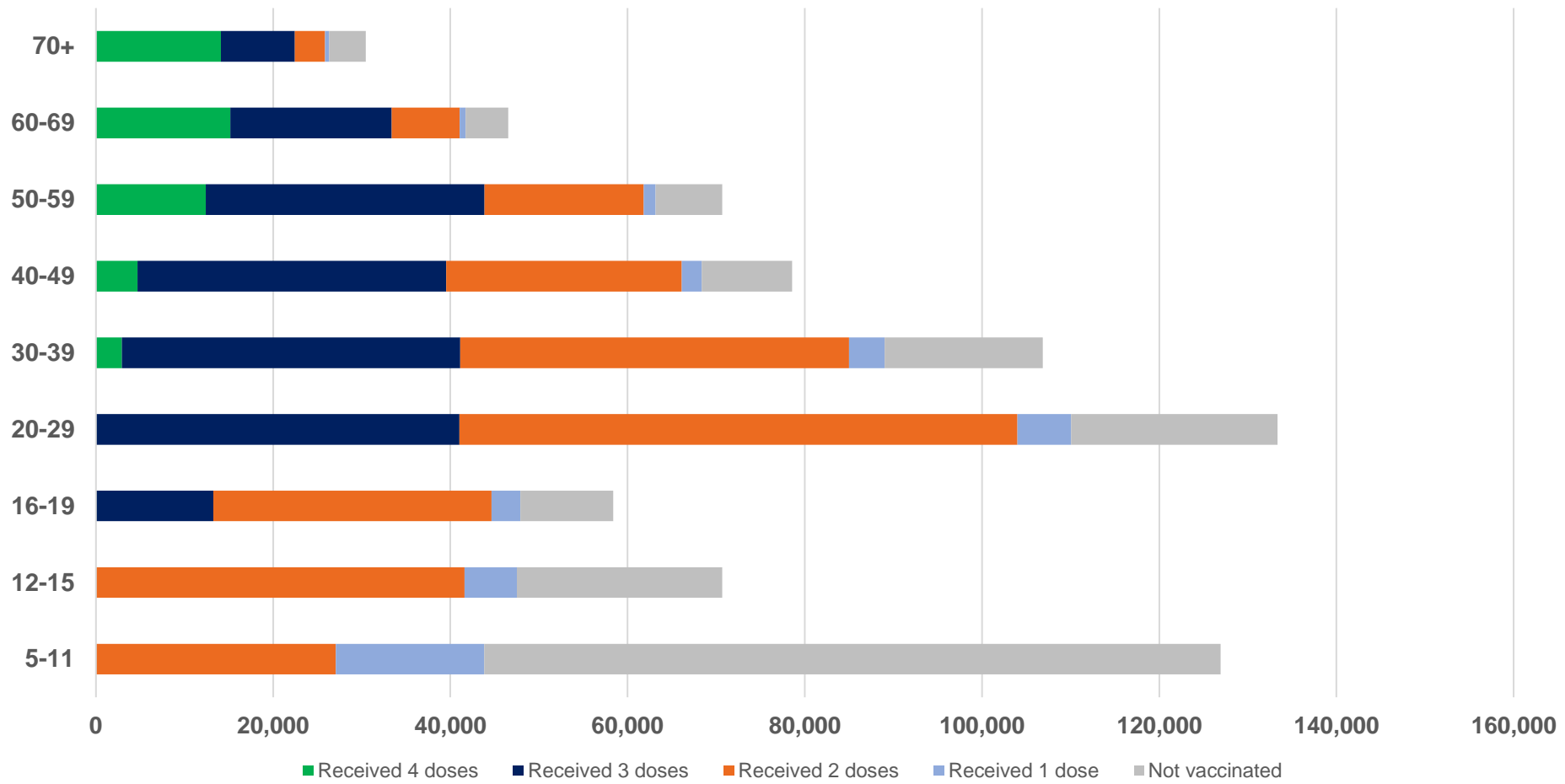
Source: Australian Immunisation Register

*Identifying as Aboriginal and Torres Strait Islander is optional and the estimated population may be under reported.
 **Includes all Aboriginal and Torres Strait Islander peoples who have received a vaccination, not limited to those administered in an ACCHS setting.
 #ACCHS in the ACT are currently operating as Commonwealth Vaccine Clinics so not included to avoid double counting.
 ##The above table includes all identified Aboriginal and Torres Strait Islander people who are aged 16 and above by their state of residence.

Aboriginal and Torres Strait Islander peoples

Number of people vaccinated by age

Data as at:
09 Aug 2022
Updated weekly



* Previously versions of this chart incorrectly stacked complete populations receiving doses. This significantly inflated counts as individuals with more than two doses were counted multiple times across each category. The above has corrected for this error and individuals are now only included once.

Source: Australian Immunisation Register

Individuals with Culturally and Linguistically Diverse (CALD) backgrounds data

Data as at:
24 Jul 2022
Updated weekly

Australia's COVID-19
Vaccine Program

People over the age of 16

CALD population *	Total number of individuals in cohort	% People with at least one dose	% People who received two doses	% of eligible people who received three or more doses
General population	20,619,959	>95.0%	>95.0%	71.1%
People born overseas	4,451,667	94.5%	93.9%	72.1%
Speaks a language other than English at home	4,106,196	94.0%	93.3%	68.1%

	General population			Born Overseas			Speaks a language other than English at home		
	% with at least one dose	% who received two doses	% of eligible people who received three or more doses	% with at least one dose	% who received two doses	% of eligible people who received three or more doses	% with at least one dose	% who received two doses	% of eligible people who received three or more doses
ACT	>95.0%	>95.0%	79.6%	>95.0%	>95.0%	77.8%	>95.0%	>95.0%	75.2%
NSW	>95.0%	>95.0%	68.8%	94.8%	94.2%	69.3%	94.1%	93.4%	64.7%
NT	91.3%	88.8%	78.4%	>95.0%	94.7%	87.6%	94.2%	93.7%	86.4%
Qld	94.4%	92.9%	64.1%	92.1%	91.3%	66.4%	92.4%	91.5%	62.9%
SA	>95.0%	93.9%	74.9%	92.6%	91.6%	74.1%	91.6%	90.5%	70.4%
Tas	>95.0%	>95.0%	73.6%	93.7%	93.0%	75.1%	93.7%	93.0%	71.1%
Vic	>95.0%	94.4%	73.4%	>95.0%	94.6%	72.4%	94.6%	94.0%	68.6%
WA	>95.0%	>95.0%	82.9%	>95.0%	94.5%	85.1%	>95.0%	94.5%	83.1%

*Individuals with Culturally and Linguistically Diverse (CALD) backgrounds are as reported in the 2021 Census, excluding those who have since departed Australia; those born in the UK, Ireland or NZ; and Aboriginal and/or Torres Strait Islander peoples. There is overlap across CALD cohorts where individuals may have reported they had more than one CALD characteristic in the 2021 Census.

Small negative changes may appear when compared with the previous report due to perturbation, in particular for small population groups.

Source: Australian Immunisation Register linked to the Multi-Agency Data Integration Project (Census 2021 characteristics)

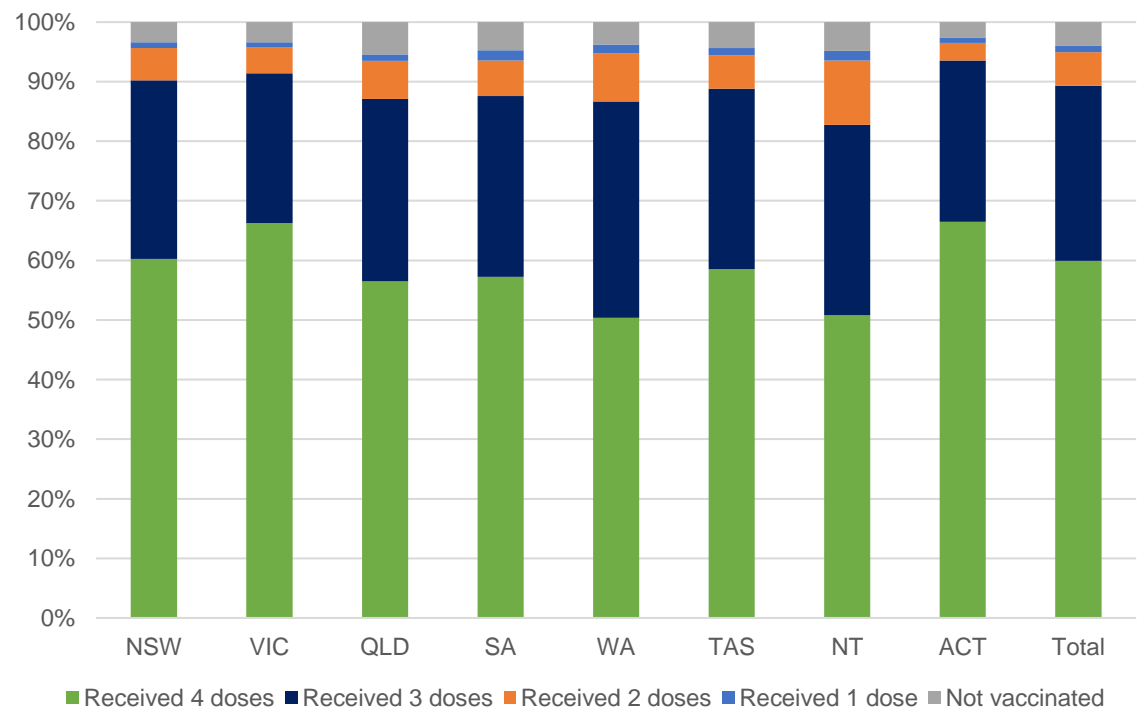
Data as at:
04 Aug 2022
Updated weekly

Residential aged care vaccination rollout

Residential aged care facilities status

171,847	169,915	159,829	107,199
People with at least one dose	People with at least two doses	People with three doses	People with four doses

Aged care resident vaccinations*



Aged care worker vaccinations

Jurisdictions	Total workers with at least one dose	Workers with at least two doses	% Workers with at least one dose	% Workers with at least two doses
NSW	77,817	77,686	99.9%	99.7%
VIC	70,888	70,888	100.0%	100.0%
QLD	49,034	49,022	100.0%	100.0%
SA	26,676	26,664	100.0%	100.0%
WA	24,818	24,812	100.0%	100.0%
TAS	7,544	7,544	100.0%	100.0%
NT	913	913	100.0%	100.0%
ACT	2,949	2,949	100.0%	100.0%
Total	260,639	260,478	100.0%	99.9%

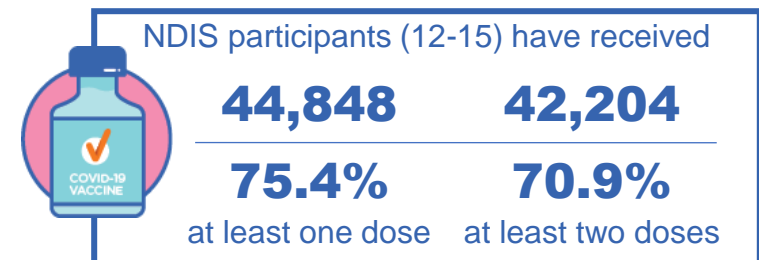
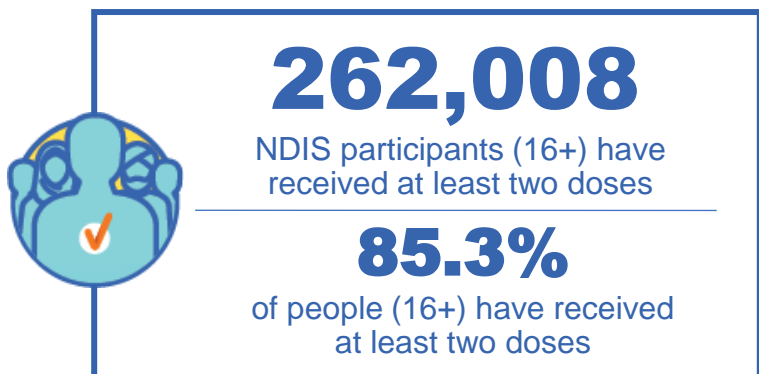
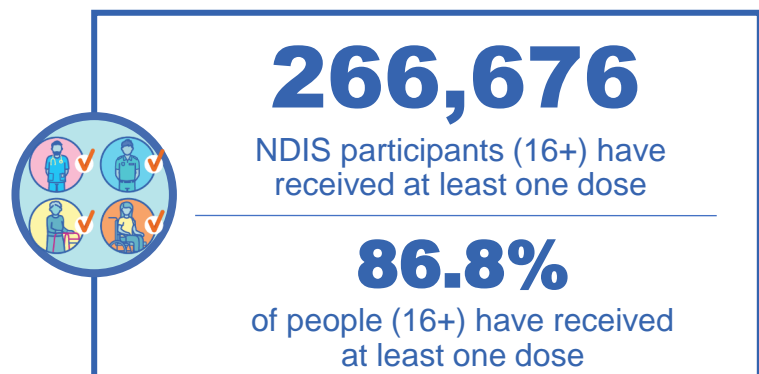
Source: Residential aged care provider self-reported COVID-19 vaccination information and matched AIR data of residents in permanent residential RACFs.

*Self-reported status updates are provided by facilities at least once per week. Reporting is updated Monday to Friday to encompass different facility updates being made on different days.

National Disability Insurance Scheme (NDIS) reported vaccinations

Data as at:
04 Aug 2022
Updated weekly

Australia's COVID-19
Vaccine Program



NDIS participant vaccinations

	% People aged 16+ with at least one dose	% People aged 16+ with at least two doses	% People aged 16+ with three doses	% People aged 16+ with four doses
ACT	89.2%	88.0%	83.4%	30.3%
NSW	87.5%	86.1%	74.9%	30.1%
NT	78.0%	75.6%	78.6%	22.1%
QLD	84.9%	83.3%	71.2%	25.1%
SA	84.6%	82.7%	77.9%	24.1%
TAS	87.3%	85.3%	75.8%	24.9%
VIC	88.0%	86.6%	77.5%	27.0%
WA	88.1%	86.5%	82.1%	27.1%
National	86.8%	85.3%	76.0%	27.3%

Source: Linkage between National Disability Insurance Agency data and the Australian Immunisation Register. Total NDIS participant numbers as at 01 August. Australian Immunisation Register data as at 03 August. Includes all participants regardless of residence type.

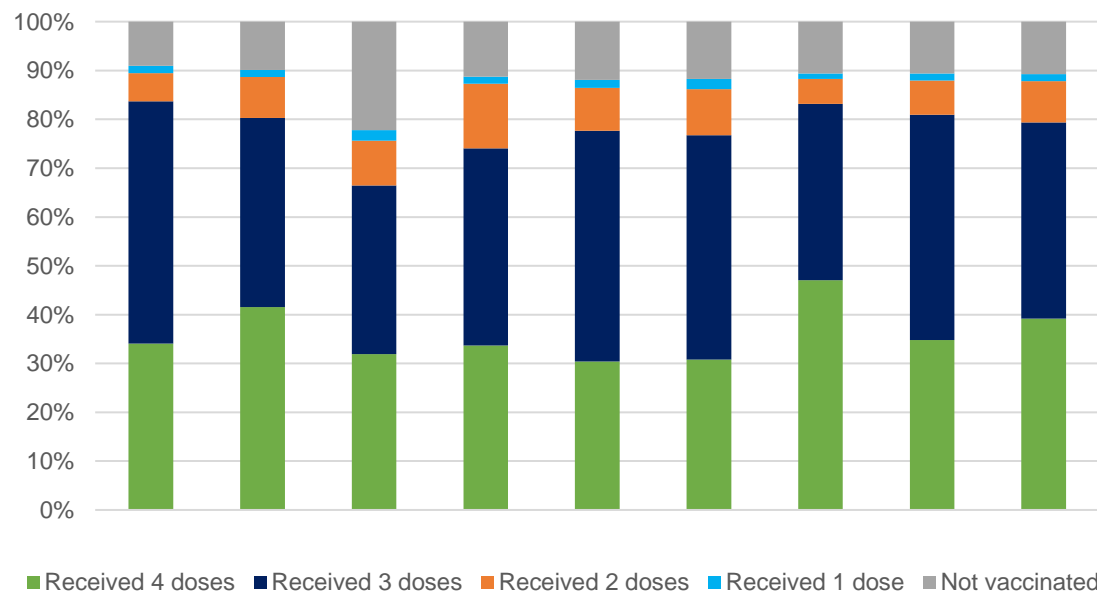
National Disability Insurance Scheme (NDIS) reported vaccinations

Data as at:
04 Aug 2022
Updated weekly

Australia's COVID-19
Vaccine Program

NATIONAL	People with at least one dose	People with at least two doses	Total number of individuals in cohort	% People with at least one dose	% People with at least two doses
NDIS participants living in disability accommodation	21,151	20,815	23,726	89.1%	87.7%

NDIS participants in disability and aged care accommodation



Source: Linkage between National Disability Insurance Agency data and the Australian Immunisation Register. Includes participants residing in disability accommodation only.
Source: Total NDIS participant numbers as at 01 August. Participant data as at 03 August. Australian Immunisation Register data as at 03 August. Worker data as at 04 August.

NDIS workforce vaccinations

	NDIS workers with at least one dose	NDIS workers with at least two doses	% NDIS workers with at least one dose	% NDIS workers with at least two doses
NSW	128,750	124,081	98.4%	94.8%
VIC	117,778	114,938	97.8%	95.5%
QLD	71,498	70,663	97.9%	96.8%
WA	34,491	33,105	98.9%	95.0%
SA	35,768	34,316	98.7%	94.7%
TAS	12,510	12,182	98.5%	95.9%
ACT	12,325	12,300	99.8%	99.6%
NT	3,972	3,824	99.6%	95.9%
TOTAL	417,092	405,409	98.3%	95.5%

Source: the NDIS Commission has established a requirement for registered NDIS providers who provide intensive disability support services to report on the vaccination status of workers they employ, or otherwise engage, to deliver NDIS-funded supports and services, and who are required to be vaccinated in accordance with in-force state and territory public health orders. The statistics reflect data reported to the NDIS Commission by registered NDIS providers and should be considered indicative and subject to change

Note: Some registered NDIS providers are yet to report on the vaccination status of their workforce. The NDIS Commission is working with those providers around reporting requirements.

Remaining workers not included include those exempt from vaccination requirements, workers whose vaccination status is not yet verified by the provider (such as workers on leave) and provider reporting anomalies.