



Australian Government

Department of Health and Aged Care

COVID-19 Vaccine Roll-out

01 August 2022

Data as at:
31 Jul 2022

Total vaccine doses



62,318,828 total vaccine doses administered nationally as at 31 July

+10,075 recorded in the last 24 hours



20,161,806

people (16+) have received at least one dose (>95%)

19,818,587

people (16+) have received at least two doses (>95%)



14,097,289

people (16+) have received three doses



4,031,526

people (16+) have received four doses

NSW
19,364,004
(+2,876 daily increase)

VIC
16,290,083
(+2,386 daily increase)

QLD
11,820,556
(+1,953 daily increase)

WA
6,827,505
(+1,344 daily increase)

TAS
1,418,613
(+531 daily increase)

SA
4,352,872
(+791 daily increase)

ACT
1,638,832
(+185 daily increase)

NT
606,363
(<10 daily increase)

*Administration state breakdown indicates state in which a vaccine was administered

Source: Australian Immunisation Register

Third Doses

Data as at:
31 Jul 2022



232,789

Indigenous people who have received three or more doses

54.8%

of eligible population (424,688)



167,747

Aged Care Residents who have received three or more doses##

95.7%

of eligible population (175,274)



197,589

NDIS participants

who have received three or more doses#

75.8%

of eligible population (260,000)

22,379

NDIS residents

who have received three or more doses#

90.4%

of eligible population (24,000)



14,097,289

total people who have received three or more doses

+1,379 daily increase

71.3% of eligible population (19,773,991)

	Number of People	Daily Increase	% of Eligible
NSW	4,311,490	417	69.0%
VIC	3,747,753	314	73.5%
QLD	2,451,990	266	64.3%
WA	1,716,630	107	83.0%
SA	1,012,594	126	75.1%
TAS	322,470	70	73.8%
ACT	277,441	42	79.7%
NT	132,360	<10	78.5%

124,561

doses administered to persons residing in other territories or with missing residential information

*People may belong to multiple groups and could be represented in the above breakdowns multiple times.


NDIS participants data as at 26 July 2022.

Aged Care Residents data as at 29 July 2022.

Source: Australian Immunisation Register

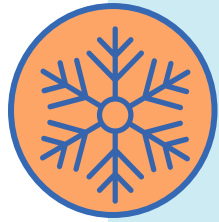
Data as at:
31 Jul 2022

Fourth Doses



104,614
Aged Care Residents who have received four or more doses#

78.8%
of eligible population (132,760)



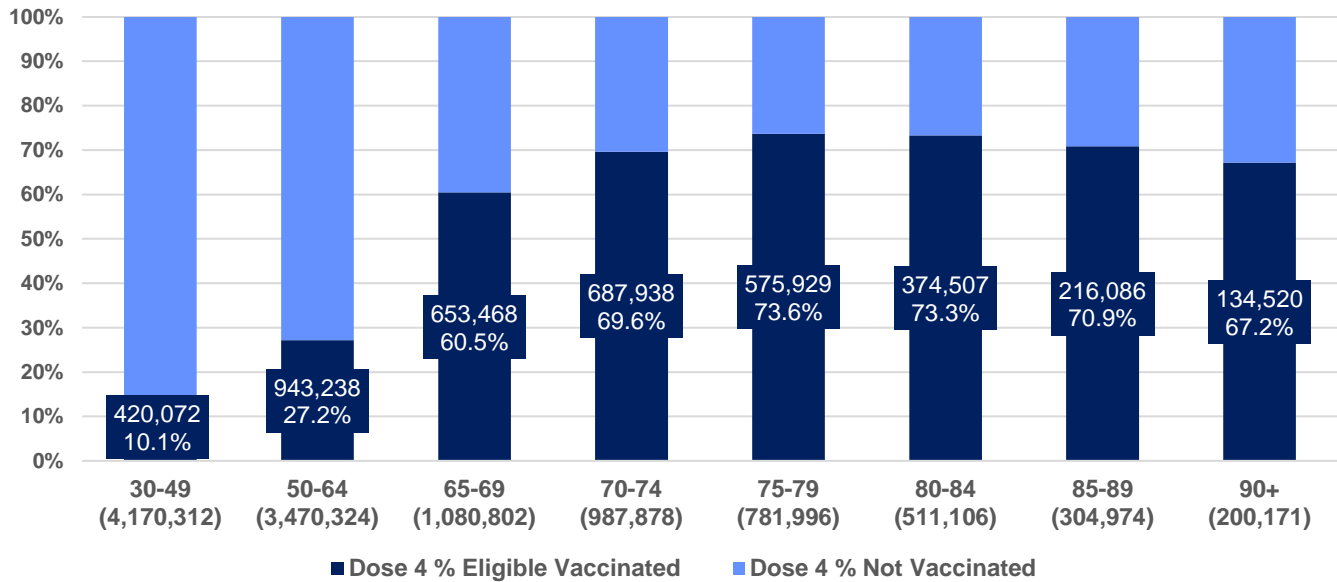
4,031,526
+7,915
34.8%
2,642,448
68.3%

total people (16+) who have received four doses
daily increase (16+)

of eligible population (30+) (11,507,563)

total people (65+) who have received four doses
of eligible population (65+) (3,866,927)

% Individuals eligible vaccinated by current age



	Number of People 16+	Daily Increase
ACT	80,222	126
NSW	1,296,697	2,176
NT	17,752	<10
QLD	790,972	1,517
SA	321,367	658
TAS	108,377	386
VIC	989,614	1,811
WA	405,842	1,184

20,683 doses administered to persons residing in other territories or with missing residential information

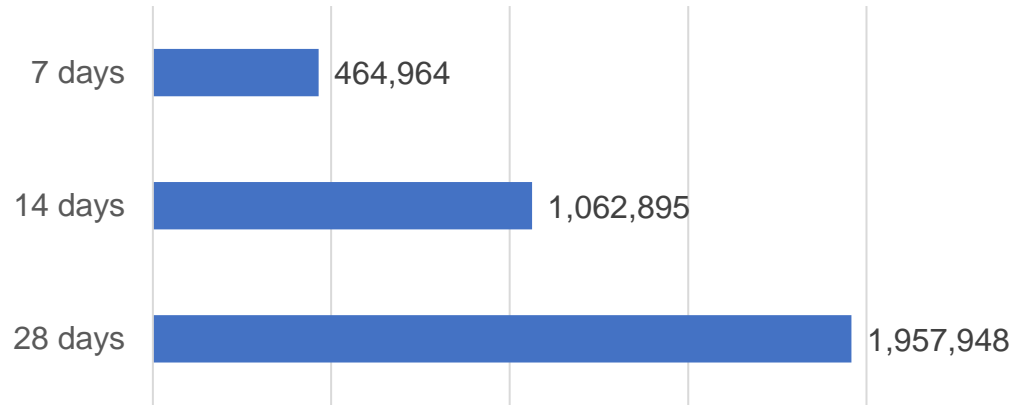
*People become eligible for a fourth dose three months after their third dose. Individuals may belong to multiple groups and could be represented in the above multiple times.
#Aged Care Residents data as at 28 July 2022.

Source: Australian Immunisation Register

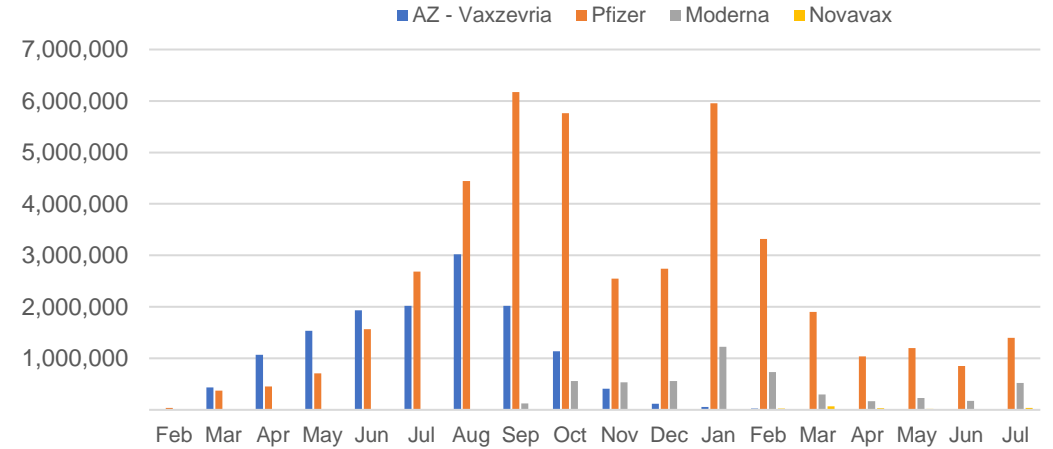
Vaccine milestone charts

Data as at:
31 Jul 2022
Updated weekly

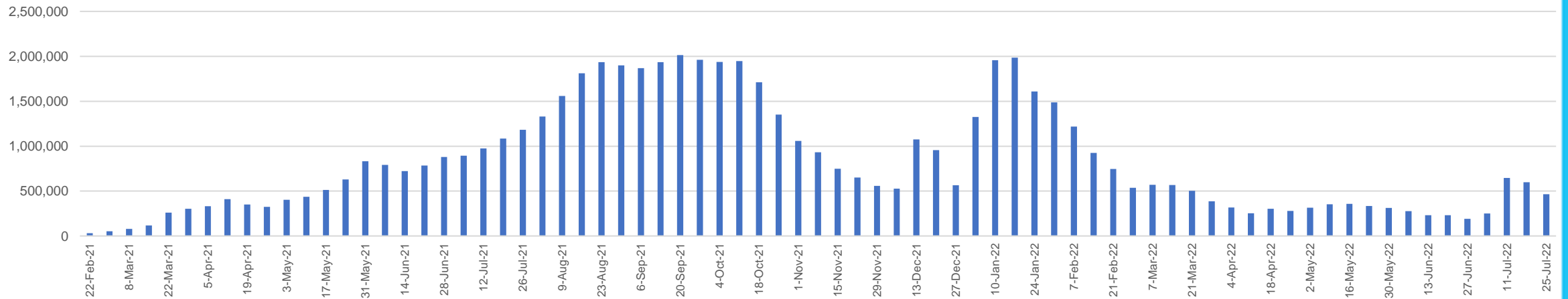
Doses Reported



Doses by administration month and vaccine type



Doses Administered by Week



*Sourced from the Australian Immunisation Register.

Data as at:
31 Jul 2022
Updated weekly

Doses by age and Jurisdiction

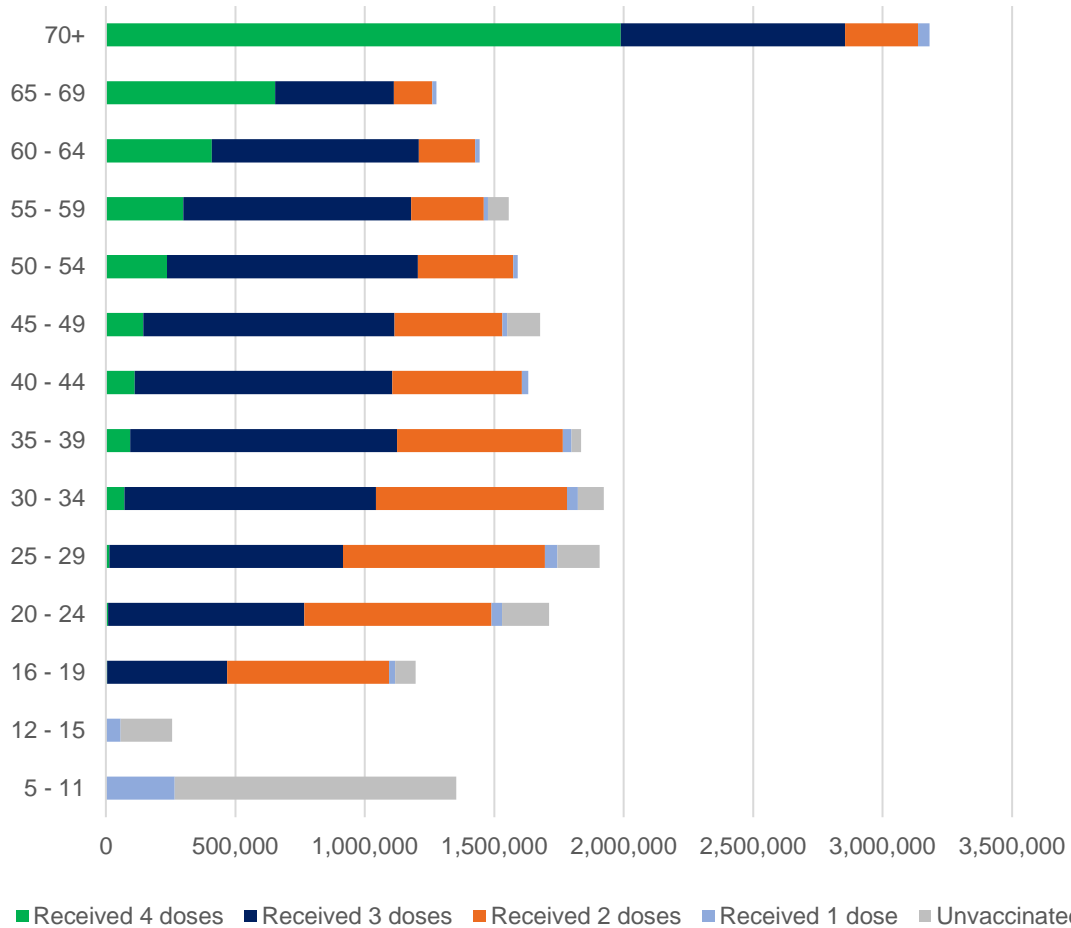
	AUS	ACT	NSW	NT	QLD	SA	TAS	VIC	WA
5 to 11 - dose 1	1,189,216	31,716	356,530	13,044	205,660	83,324	28,310	323,668	139,334
5 to 11 - dose 2	923,813	27,760	284,648	8,844	153,424	65,385	23,418	251,175	104,522
5 to 11 - population	2,276,638	39,789	716,460	24,750	478,731	148,816	45,033	578,499	244,154
5 to 11 % with dose 1	52.24%	79.71%	49.76%	52.70%	42.96%	55.99%	62.87%	55.95%	57.07%
5 to 11 % with dose 2	40.58%	69.77%	39.73%	35.73%	32.05%	43.94%	52.00%	43.42%	42.81%
12 to 15 - dose 1	1,044,806	20,129	321,553	10,691	204,528	67,942	22,662	272,992	115,166
12 to 15 - dose 2	988,223	19,577	307,226	9,622	190,775	64,179	21,545	260,874	106,557
12 to 15 - population	1,243,990	19,693	390,330	13,060	270,146	82,747	26,308	308,611	132,869
12 to 15 % with dose 1	83.99%	>99%	82.38%	81.86%	75.71%	82.11%	86.14%	88.46%	86.68%
12 to 15 % with dose 2	79.44%	>99%	78.71%	73.68%	70.62%	77.56%	81.90%	84.53%	80.20%
16 and over - dose 1	20,161,806	354,318	6,358,287	173,948	3,885,442	1,382,767	446,845	5,186,867	2,105,567
16 and over - dose 2	19,818,587	348,423	6,257,260	169,234	3,820,919	1,353,183	437,833	5,106,419	2,073,970
16 and over - dose 3	14,097,289	277,441	4,311,490	132,360	2,451,990	1,012,594	322,470	3,747,753	1,716,630
16 and over - population	20,619,959	344,037	6,565,651	190,571	4,112,707	1,440,400	440,172	5,407,574	2,114,978
16 and over % with dose 1	97.78%	>99%	96.84%	91.28%	94.47%	96.00%	>99%	95.92%	>99%
16 and over % with dose 2	96.11%	>99%	95.30%	88.80%	92.91%	93.94%	>99%	94.43%	98.06%
16 and over % with dose 3	68.37%	80.64%	65.67%	69.45%	59.62%	70.30%	73.26%	69.31%	81.17%
30 and over - dose 1	15,769,858	273,940	5,000,724	128,406	3,036,791	1,100,697	354,951	4,051,537	1,649,068
30 and over - dose 2	15,540,781	269,999	4,931,481	125,790	2,994,907	1,081,991	349,187	3,996,579	1,628,047
30 and over - dose 3	11,947,301	227,518	3,691,888	103,902	2,138,412	867,865	278,809	3,134,842	1,412,661
30 and over - dose 4	4,005,758	79,368	1,287,304	17,417	787,062	320,000	107,778	982,722	403,733
30 and over - population	15,805,337	258,148	5,042,108	140,343	3,148,826	1,126,262	349,703	4,096,873	1,639,833
30 and over % with dose 1	>99%	>99%	>99%	91.49%	96.44%	97.73%	>99%	98.89%	>99%
30 and over % with dose 2	98.33%	>99%	97.81%	89.63%	95.11%	96.07%	>99%	97.55%	>99%
30 and over % with dose 3	75.59%	88.13%	73.22%	74.03%	67.91%	77.06%	79.73%	76.52%	86.15%
30 and over % with dose 4	25.34%	30.75%	25.53%	12.41%	25.00%	28.41%	30.82%	23.99%	24.62%
65 and over - dose 1	4,457,616	65,248	1,444,870	20,664	865,147	356,599	117,170	1,112,447	435,495
65 and over - dose 2	4,398,242	64,255	1,425,787	20,329	855,145	352,106	115,848	1,096,954	430,657
65 and over - dose 3	3,967,432	59,875	1,273,829	18,064	771,834	323,669	107,111	982,354	401,778
65 and over - dose 4	2,642,448	44,949	844,088	9,488	531,483	222,024	74,420	635,957	265,305
65 and over - population	4,192,882	57,745	1,366,640	20,994	831,881	338,903	110,799	1,057,498	407,530
65 and over % with dose 1	>99%	>99%	>99%	98.43%	>99%	>99%	>99%	>99%	>99%
65 and over % with dose 2	>99%	>99%	>99%	96.83%	>99%	>99%	>99%	>99%	>99%
65 and over % with dose 3	94.62%	>99%	93.21%	86.04%	92.78%	95.50%	96.67%	92.89%	98.59%
65 and over % with dose 4	63.02%	77.84%	61.76%	45.19%	63.89%	65.51%	67.17%	60.14%	65.10%

*National population will not equal sum of listed jurisdictions due to a small number of people counted in national population residing in some 'other' territories. Sum of state doses will not add to national total as some records are unable to be geocoded to a State or Territory.

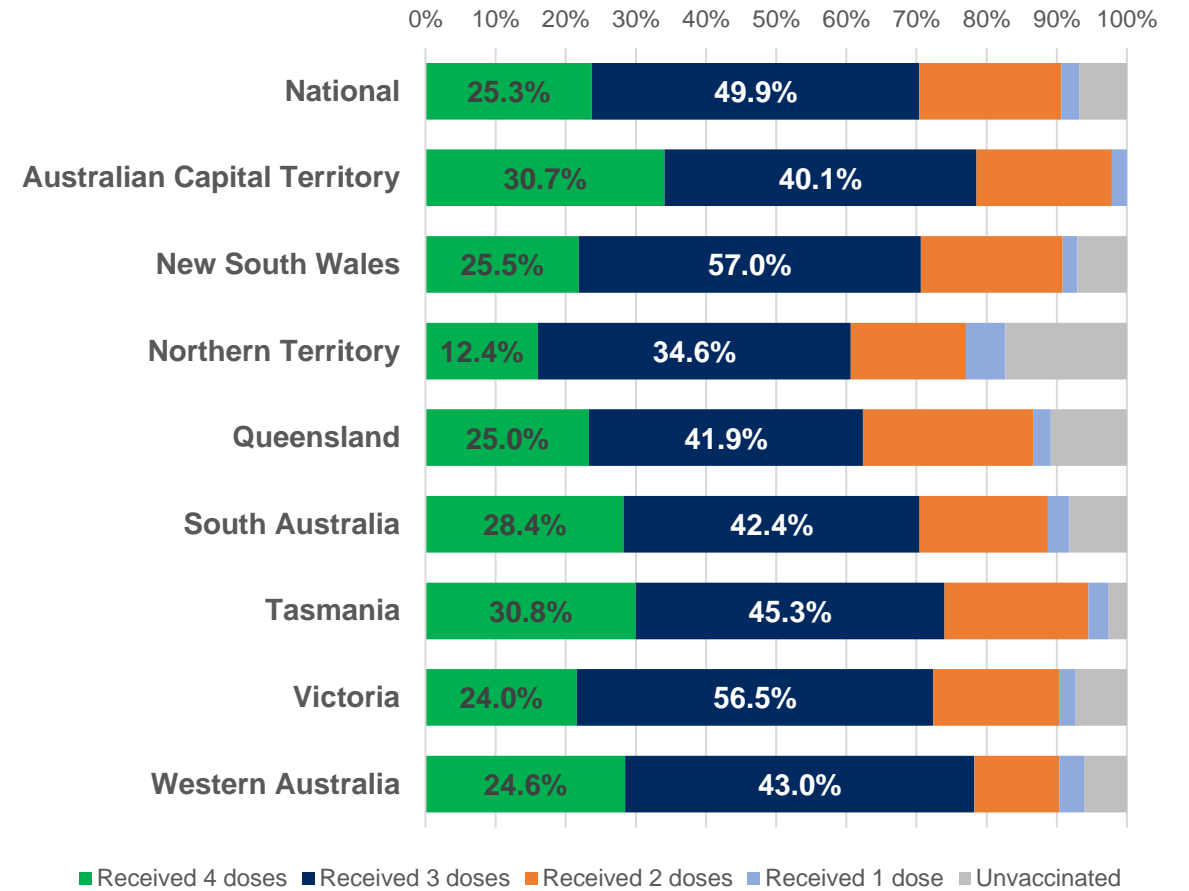
Data as at:
31 Jul 2022
Updated weekly

Vaccinations by age and location

Number of people vaccinated by age

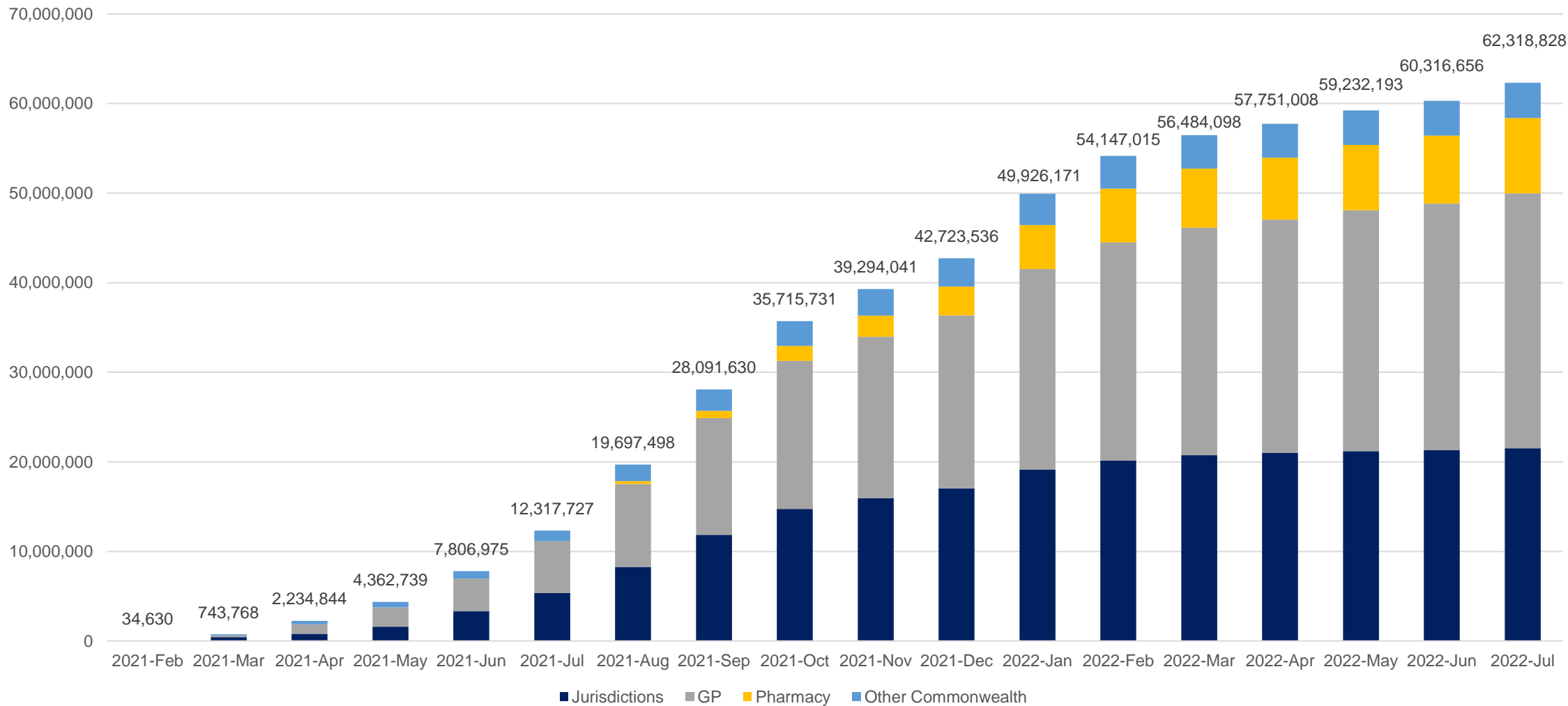


Individuals vaccinated by residential location



Cumulative doses administered by channel

Data as at:
31 Jul 2022
Updated weekly



Source: Australian Immunisation Register

Data as at:
31 Jul 2022
Updated weekly

Commonwealth primary care



Primary care vaccine administration sites

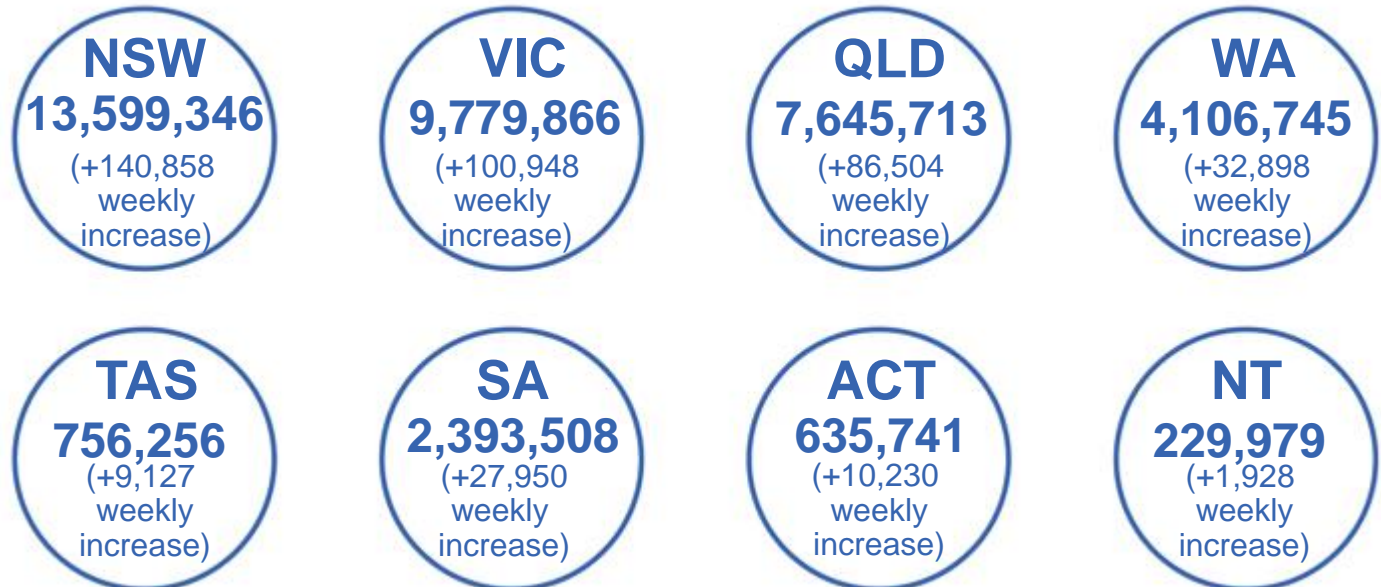
5,684	120	178	3,617
GPs	CVCs	ACCHS	Pharmacies



39,478,683 total vaccine doses administered
primary care settings as at 31 July
+417,118 recorded in the last week

Primary care vaccinations by provider type

	Doses administered	7 day increase
General Practice* includes other Commonwealth	31,066,677	230,024
Pharmacy	8,412,006	187,094



331,529 doses administered to persons residing in other territories or with missing residential information

*General practice includes Commonwealth Vaccination Clinics, Aboriginal Community Health Centres, Royal Flying Doctor Service and other Commonwealth vaccination facilities

Source: Australian Immunisation Register

Aboriginal and Torres Strait Islander peoples

Number of people vaccinated

Data as at:
31 Jul 2022
Updated weekly

Australia's COVID-19
Vaccine Program



445,897

people over the age of 16
have had at least one dose

85.1%

of people over the age of 16
have had at least one dose



427,753

people over the age of 16
have had two doses

81.6%

of people over the age of 16 are
fully vaccinated



People aged 12 – 15 years

47,583

41,674

67.4%

59.0%

At least one dose

Have had two doses

179 Aboriginal community controlled health services (ACCHS) sites

0#

50

27

45

12

3

21

21

ACT

NSW

NT

QLD

SA

TAS

VIC

WA

Medicare Address State ^{##}	Individuals Dose 1 % (16+)	Individuals Dose 2 % (16+)	Individuals Dose 3 % Eligible (aged 16+)	Individuals Dose 4 % Eligible (aged 30+)
Australian Capital Territory	91.9%	89.7%	64.0%	31.7%
New South Wales	87.4%	85.4%	51.4%	30.9%
Northern Territory	89.8%	85.6%	67.9%	18.2%
Queensland	81.9%	78.2%	47.8%	30.2%
South Australia	80.8%	75.3%	59.5%	31.0%
Tasmania	89.0%	86.4%	59.3%	33.2%
Victoria	90.5%	88.5%	61.2%	28.8%
Western Australia	86.8%	81.1%	64.2%	20.6%
Unknown/Other Territories	71.1%	65.8%	47.9%	16.1%
Totals	85.1%	81.6%	54.8%	27.4%

Source: Australian Immunisation Register

*Identifying as Aboriginal and Torres Strait Islander is optional and the estimated population may be under reported.

**Includes all Aboriginal and Torres Strait Islander peoples who have received a vaccination, not limited to those administered in an ACCHS setting

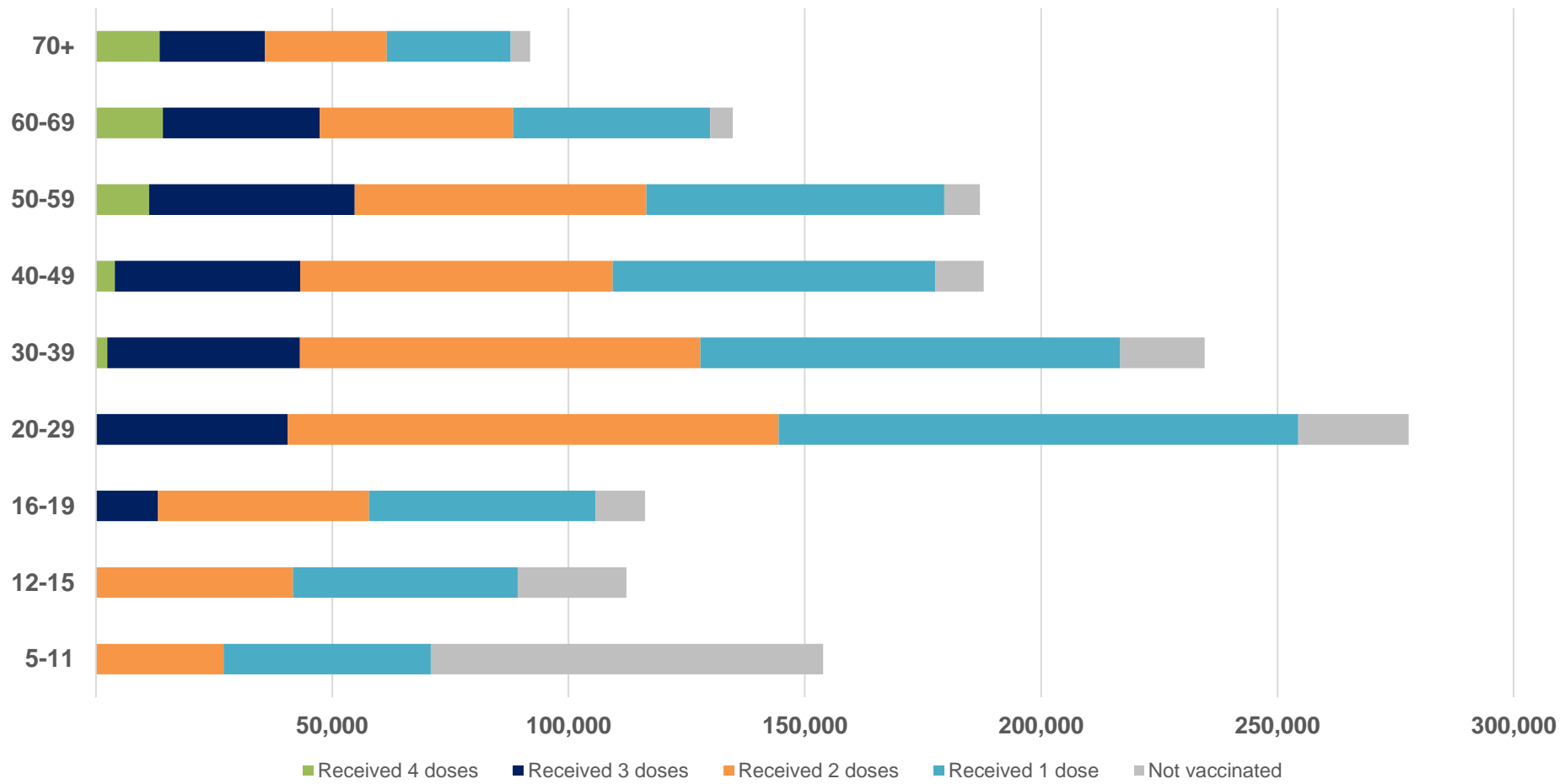
#ACCHS in the ACT are currently operating as a Commonwealth Vaccine Clinics so not included to avoid double counting

##The above table includes all identified Aboriginal and Torres Strait Islander people who are aged 16 and above by their state of residence.

Aboriginal and Torres Strait Islander peoples

Number of people vaccinated by age

Data as at:
31 Jul 2022
Updated weekly



Source: Australian Immunisation Register

Individuals with Culturally and Linguistically Diverse (CALD) backgrounds data

Data as at:
17 Jul 2022
Updated weekly

Australia's COVID-19
Vaccine Program

People over the age of 16

CALD population *	Total number of individuals in cohort	% People with at least one dose	% People who received two doses	% of eligible people who received three doses
General population	20,619,959	>95.0%	>95.0%	70.9%
People born overseas	4,451,667	94.5%	93.9%	71.8%
Speaks a language other than English at home	4,106,196	94.1%	93.4%	67.8%

	General population			Born Overseas			Speaks a language other than English at home		
	% with at least one dose	% who received two doses	% of eligible people who received three doses	% with at least one dose	% who received two doses	% of eligible people who received three doses	% with at least one dose	% who received two doses	% of eligible people who received three doses
ACT	>95.0%	>95.0%	79.4%	>95.0%	>95.0%	77.6%	>95.0%	>95.0%	75.0%
NSW	>95.0%	>95.0%	68.6%	94.8%	94.2%	69.0%	94.1%	93.4%	64.4%
NT	91.3%	88.8%	78.3%	>95.0%	94.8%	87.6%	94.3%	93.8%	86.3%
Qld	94.4%	92.8%	63.9%	92.1%	91.3%	66.1%	92.4%	91.6%	62.5%
SA	>95.0%	93.9%	74.6%	92.7%	91.6%	73.7%	91.7%	90.5%	70.0%
Tas	>95.0%	>95.0%	73.4%	93.8%	93.1%	74.9%	93.9%	93.2%	70.9%
Vic	>95.0%	94.4%	73.2%	>95.0%	94.6%	72.2%	94.6%	94.0%	68.4%
WA	>95.0%	>95.0%	82.8%	>95.0%	94.5%	84.9%	>95.0%	94.6%	83.0%

*Individuals with Culturally and Linguistically Diverse (CALD) backgrounds are as reported in the 2021 Census, excluding those who have since departed Australia; those born in the UK, Ireland or NZ; and Aboriginal and/or Torres Strait Islander peoples. There is overlap across CALD cohorts where individuals may have reported they had more than one CALD characteristic in the 2021 Census.

Small negative changes may appear when compared with the previous report due to perturbation, in particular for small population groups.

Source: Australian Immunisation Register linked to the Multi-Agency Data Integration Project (Census 2021 characteristics)

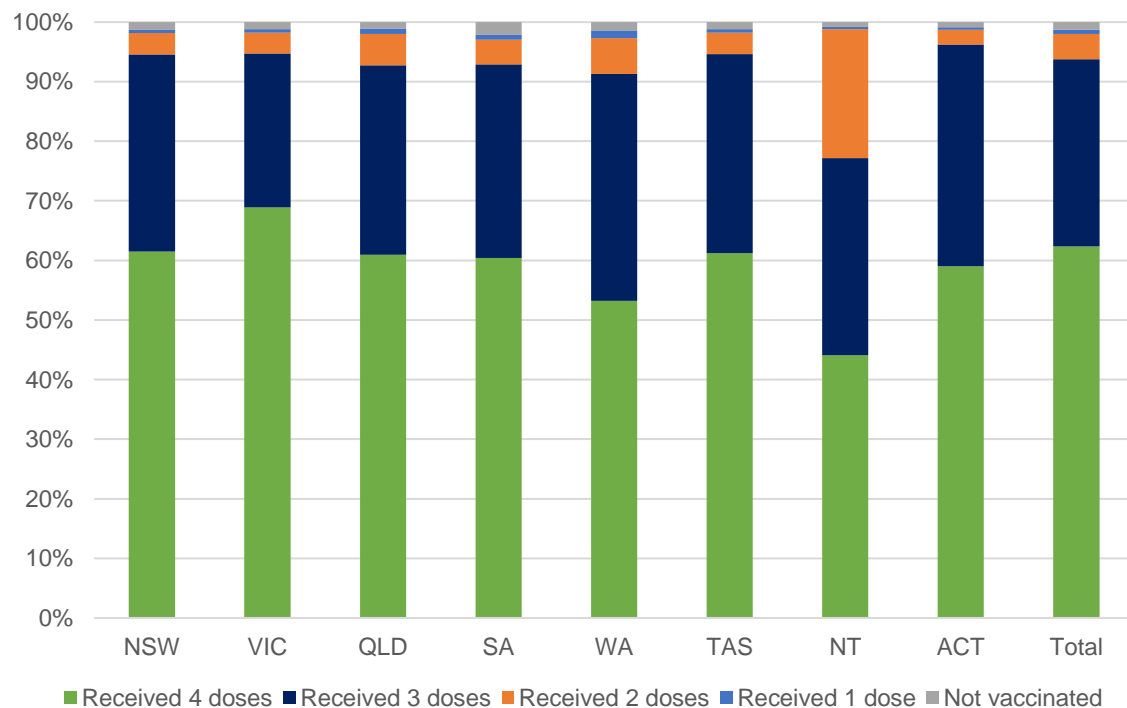
Residential aged care vaccination rollout

Residential aged care facilities status

176,583	175,274	167,747	104,614
People with at least one dose	People with two doses	People with three doses	People with four doses

Data as at:
28 Jul 2022
Updated weekly

Aged care resident vaccinations*



Aged care worker vaccinations

Jurisdictions	Total workers with at least one dose	Workers with two doses	% Workers with at least one dose	% Workers with two doses
NSW	77,892	77,765	99.9%	99.7%
VIC	70,776	70,776	100.0%	100.0%
QLD	48,877	48,863	100.0%	100.0%
SA	26,702	26,693	100.0%	100.0%
WA	24,648	24,641	100.0%	100.0%
TAS	7,540	7,540	100.0%	100.0%
NT	917	917	100.0%	100.0%
ACT	2,932	2,932	100.0%	100.0%
Total	260,284	260,127	100.0%	99.9%

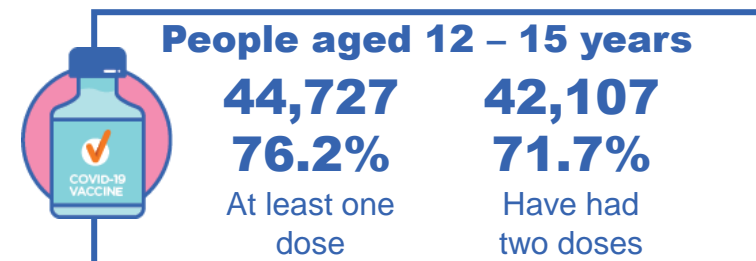
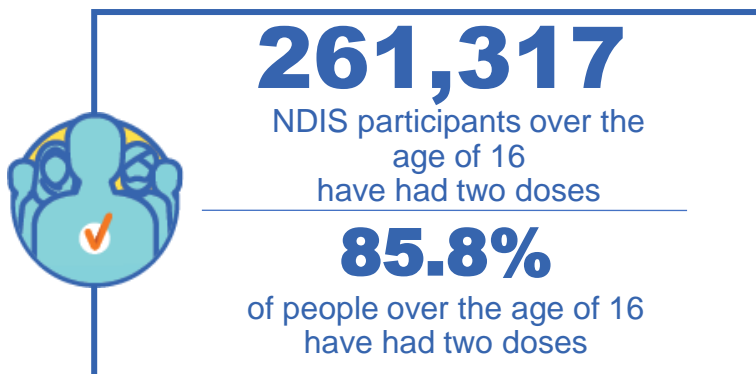
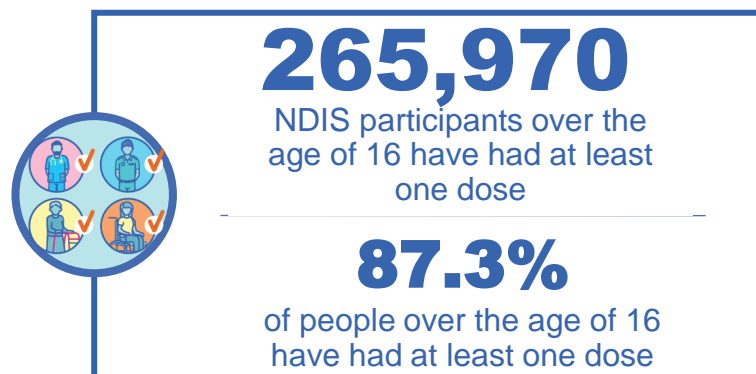
Source: Residential aged care provider self-reported COVID-19 vaccination information and matched AIR data of residents in permanent residential RACFs.

*Self-reported status updates are provided by facilities at least once per week. Reporting is updated Monday to Friday to encompass different facility updates being made on different days.

National Disability Insurance Scheme (NDIS) reported vaccinations

Data as at:
28 Jul 2022
Updated weekly

Australia's COVID-19
Vaccine Program



NDIS participant vaccinations

	% People aged 16+ with at least one dose	% People aged 16+ with two doses	% People aged 16+ with three doses	% People aged 16+ with four doses
ACT	89.4%	88.2%	83.2%	28.5%
NSW	87.8%	86.4%	74.7%	28.8%
NT	77.9%	75.6%	78.5%	21.6%
QLD	85.5%	83.9%	71.0%	23.9%
SA	85.2%	83.3%	77.6%	22.6%
TAS	87.5%	85.6%	75.7%	23.6%
VIC	88.5%	87.1%	77.4%	25.8%
WA	88.7%	87.0%	81.9%	25.7%
National	87.3%	85.8%	75.8%	26.0%

Source: Linkage between National Disability Insurance Agency data and the Australian Immunisation Register. Total NDIS participant numbers as at 30 June. Australian Immunisation Register data as at 27 July. Includes all participants regardless of residence type.

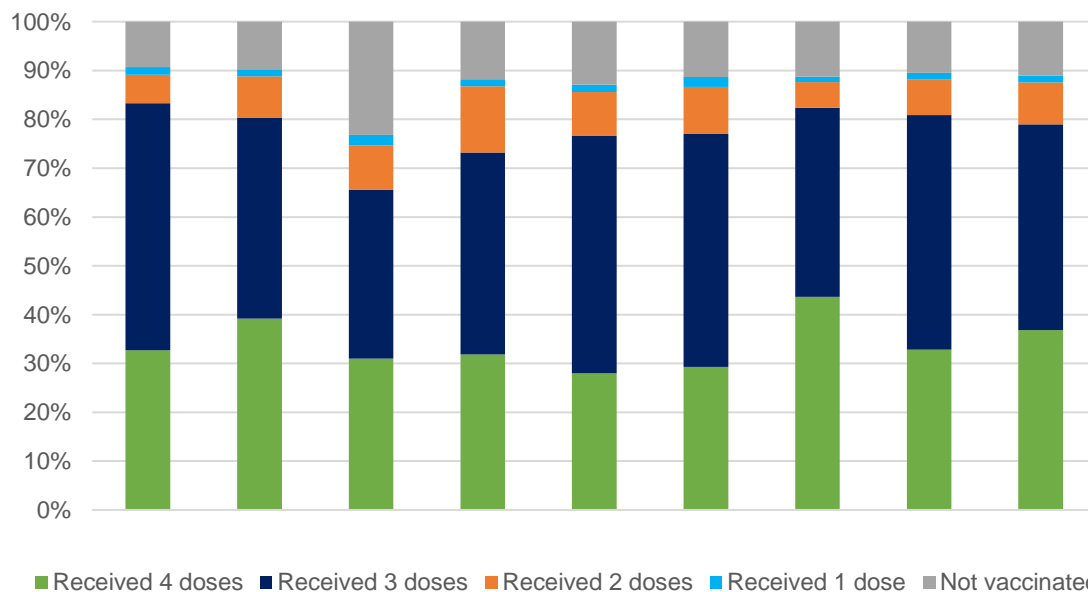
National Disability Insurance Scheme (NDIS) reported vaccinations

Data as at:
28 Jul 2022
Updated weekly

Australia's COVID-19
Vaccine Program

NATIONAL	Total people with at least one dose	People with two doses	Total number of individuals in cohort	% People with at least one dose	% People with two doses
NDIS participants living in disability accommodation	21,219	20,889	23,858	88.9%	87.6%

NDIS participants in disability and aged care accommodation



Source: Linkage between National Disability Insurance Agency data and the Australian Immunisation Register. Includes participants residing in disability accommodation only.
Source: Total NDIS participant numbers as at 30 June. Participant data as at 26 July. Australian Immunisation Register data as at 27 July. Worker data as at 28 July.

NDIS workforce vaccinations

	NDIS workers with at least one dose	NDIS workers with two doses	% NDIS workers with at least one dose	% NDIS workers with two doses
NSW	128,610	123,850	98.4%	94.7%
VIC	117,681	114,601	97.8%	95.3%
QLD	71,446	70,610	97.9%	96.8%
WA	34,473	33,090	99.0%	95.0%
SA	35,821	34,193	98.6%	94.1%
TAS	12,425	12,044	98.5%	95.5%
ACT	12,324	12,299	99.7%	99.5%
NT	3,972	3,824	99.6%	95.9%
TOTAL	416,752	404,511	98.3%	95.4%

Source: the NDIS Commission has established a requirement for registered NDIS providers who provide intensive disability support services to report on the vaccination status of workers they employ, or otherwise engage, to deliver NDIS-funded supports and services, and who are required to be vaccinated in accordance with in-force state and territory public health orders. The statistics reflect data reported to the NDIS Commission by registered NDIS providers and should be considered indicative and subject to change

Note: Some registered NDIS providers are yet to report on the vaccination status of their workforce. The NDIS Commission is working with those providers around reporting requirements.

Remaining workers not included include those exempt from vaccination requirements, workers whose vaccination status is not yet verified by the provider (such as workers on leave) and provider reporting anomalies.