



CURRENT STATUS OF CONFIRMED CASES



141



**CURRENT CASES
INTENSIVE CARE UNITS (ICU)**

ACT	NSW	NT	QLD	SA	TAS	VIC	WA
4	54	3	24	11	2	32	11



4,611

**CURRENT CASES
ADMITTED TO HOSPITALS**

ACT	NSW	NT	QLD	SA	TAS	VIC	WA
146	2,265	34	710	341	84	673	358

76,963,118

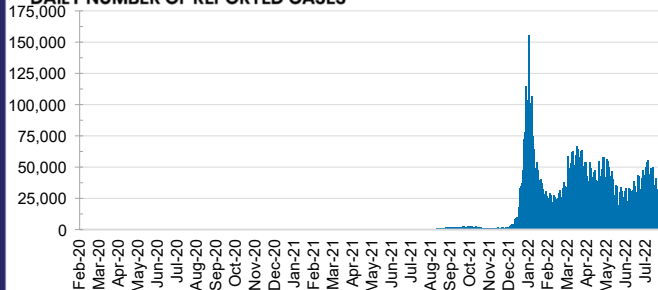


**TOTAL TESTS
REPORTED**

ACT	NSW	NT	QLD
1,281,684	34,037,866	824,240	8,262,770

SA	TAS	VIC	WA
5,440,884	755,392	21,955,494	4,404,788

DAILY NUMBER OF REPORTED CASES

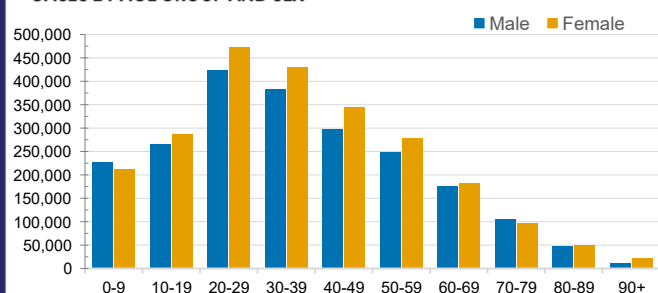


CASES IN AGED CARE SERVICES

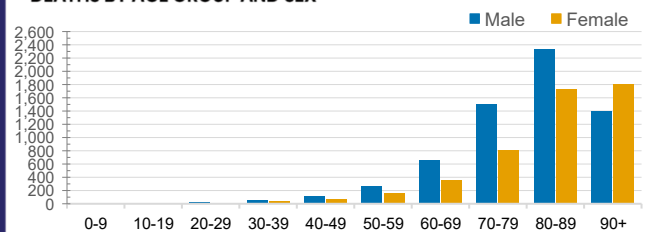
Confirmed Cases	Australia	ACT	NSW	NT	QLD	SA	TAS	VIC	WA
Residential Care Recipients	83081 (3639)	1164 (46)	27649 (1273)	291 (10)	14356 (531)	6891 (292)	2081 (37)	23996 (1234)	6653 (216)
In Home Care Recipients	56,783	939	19,735	259	11,512	5,518	987	12,175	5,658

Cases in care recipients (deaths)

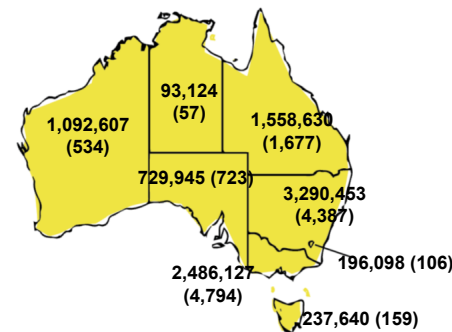
CASES BY AGE GROUP AND SEX



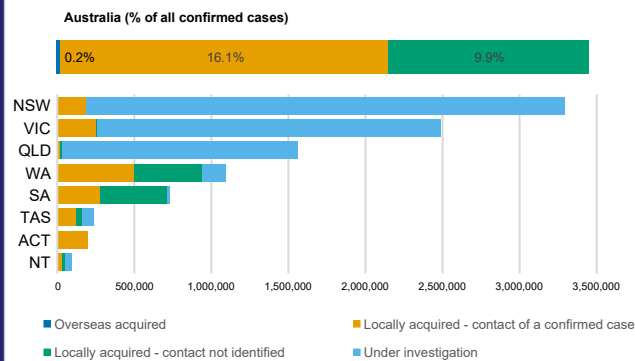
DEATHS BY AGE GROUP AND SEX



CASES (DEATHS) BY STATE AND TERRITORIES



CASES BY SOURCE OF INFECTION



PUBLIC HEALTH RESPONSE MEASURE

