



CURRENT STATUS OF CONFIRMED CASES



161

CURRENT CASES
INTENSIVE CARE UNITS (ICU)



ACT	NSW	NT	QLD	SA	TAS	VIC	WA
4	60	1	25	12	5	37	17

4,702

CURRENT CASES
ADMITTED TO HOSPITALS



ACT	NSW	NT	QLD	SA	TAS	VIC	WA
147	2,213	56	745	356	95	723	367

76,626,185

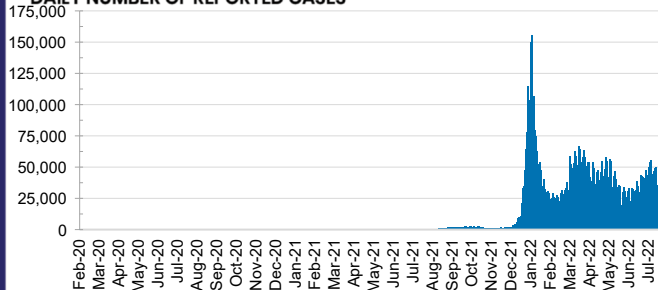
TOTAL TESTS
REPORTED



ACT	NSW	NT	QLD
1,272,667	33,874,596	821,630	8,227,732

SA	TAS	VIC	WA
5,405,023	750,582	21,897,985	4,375,970

DAILY NUMBER OF REPORTED CASES

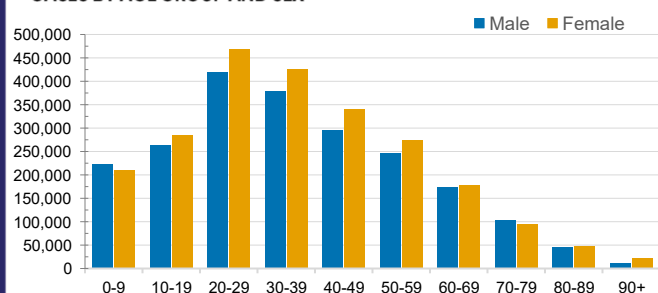


CASES IN AGED CARE SERVICES

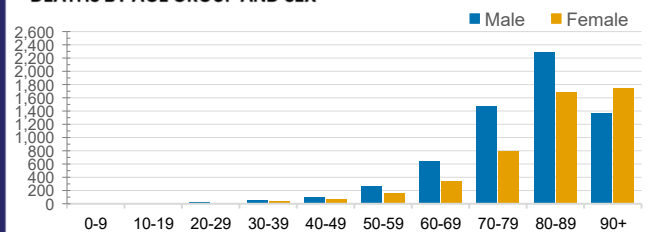
Confirmed Cases	Australia	ACT	NSW	NT	QLD	SA	TAS	VIC	WA
Residential Care Recipients	80860 (3535)	1103 (44)	26895 (1224)	279 (10)	(515)	6654 (278)	1991 (37)	23422 (1215)	6558 (212)
In Home Care Recipients	55,905	925	19,403	257	11,294	5,441	960	11,981	5,644

Cases in care recipients (deaths)

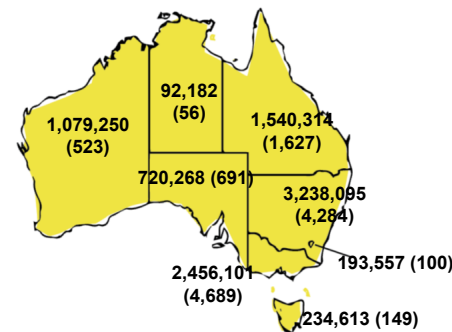
CASES BY AGE GROUP AND SEX



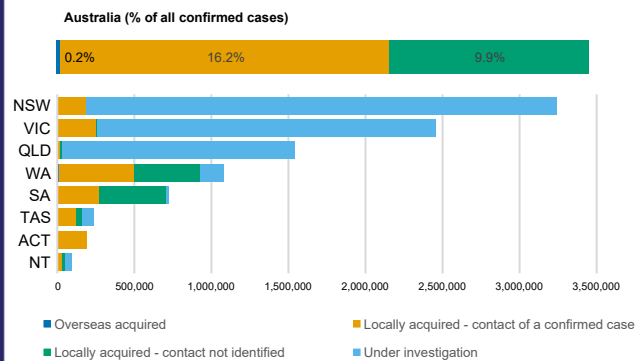
DEATHS BY AGE GROUP AND SEX



CASES (DEATHS) BY STATE AND TERRITORIES



CASES BY SOURCE OF INFECTION



PUBLIC HEALTH RESPONSE MEASURE

