



CURRENT STATUS OF CONFIRMED CASES



84



**CURRENT CASES
INTENSIVE CARE UNITS (ICU)**

ACT	NSW	NT	QLD	SA	TAS	VIC	WA
2	38	0	10	6	2	20	6



2,937

**CURRENT CASES
ADMITTED TO HOSPITALS**

ACT	NSW	NT	QLD	SA	TAS	VIC	WA
90	1,802	24	316	116	28	333	228

78,181,429

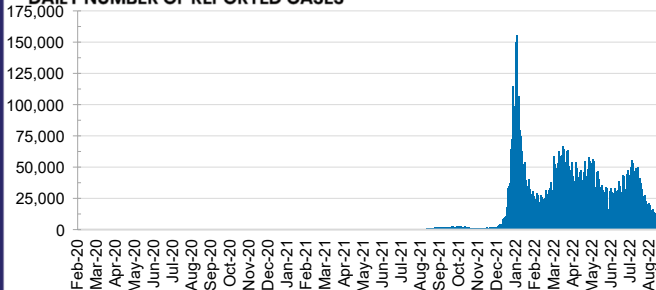


**TOTAL TESTS
REPORTED**

ACT	NSW	NT	QLD
1,313,178	34,622,234	834,149	8,409,944

SA	TAS	VIC	WA
5,563,330	774,075	22,163,863	4,500,656

DAILY NUMBER OF REPORTED CASES

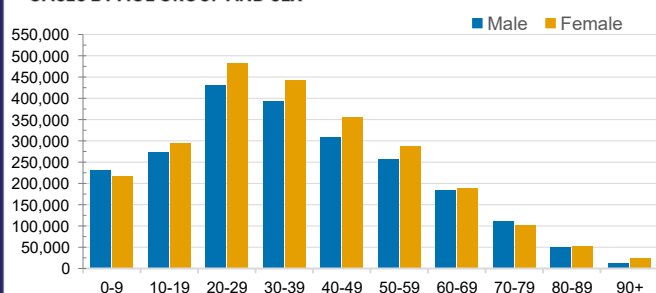


CASES IN AGED CARE SERVICES

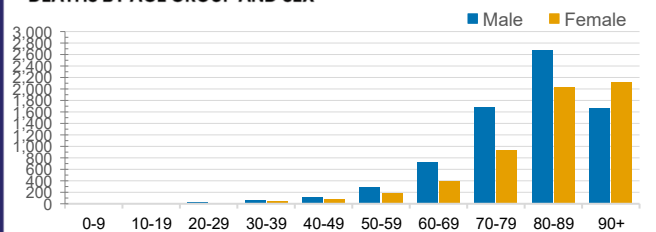
Confirmed Cases	Australia	ACT	NSW	NT	QLD	SA	TAS	VIC	WA
Residential Care Recipients	89556 (3904)	1243 (53)	30264 (1403)	307 (10)	15364 (567)	7479 (333)	2211 (37)	25569 (1277)	7119 (224)
In Home Care Recipients	59,193	959	20,946	269	11,925	5,732	1,013	12,550	5,799

Cases in care recipients (deaths)

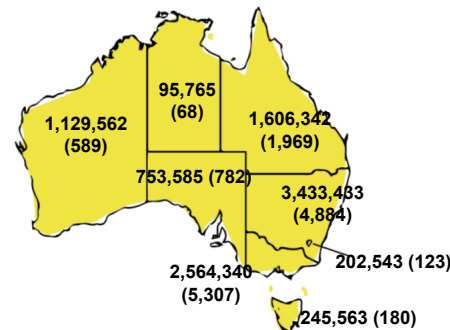
CASES BY AGE GROUP AND SEX



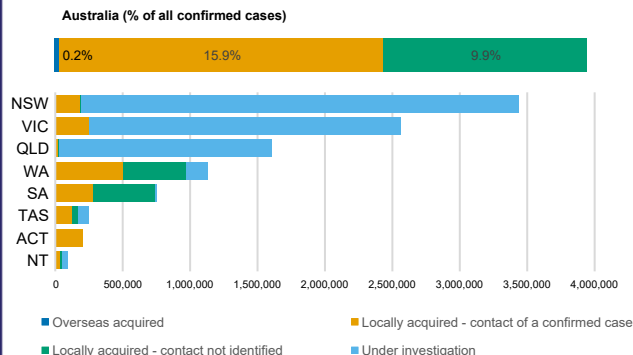
DEATHS BY AGE GROUP AND SEX



CASES (DEATHS) BY STATE AND TERRITORIES



CASES BY SOURCE OF INFECTION



PUBLIC HEALTH RESPONSE MEASURE

