



CURRENT STATUS OF CONFIRMED CASES



162



**CURRENT CASES
INTENSIVE CARE UNITS (ICU)**

ACT	NSW	NT	QLD	SA	TAS	VIC	WA
2	67	1	22	11	7	40	12



4,861

**CURRENT CASES
ADMITTED TO HOSPITALS**

ACT	NSW	NT	QLD	SA	TAS	VIC	WA
143	2,288	57	788	337	101	743	404



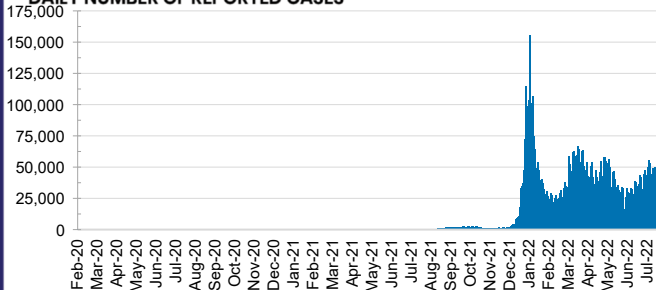
76,554,791

**TOTAL TESTS
REPORTED**

ACT	NSW	NT	QLD
1,270,903	33,850,598	820,888	8,216,664

SA	TAS	VIC	WA
5,394,813	749,366	21,882,944	4,368,615

DAILY NUMBER OF REPORTED CASES

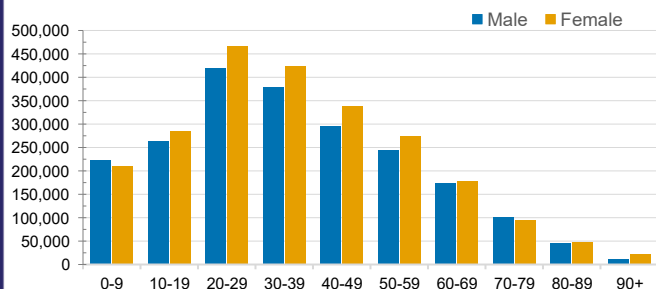


CASES IN AGED CARE SERVICES

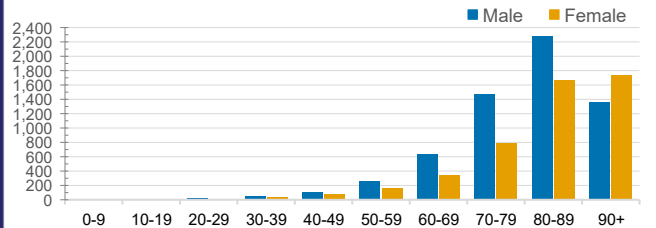
Confirmed Cases	Australia	ACT	NSW	NT	QLD	SA	TAS	VIC	WA
Residential Care Recipients	80139 (3515)	1049 (43)	26712 (1219)	273 (9)	(513)	6554 (274)	1989 (37)	23227 (1209)	6494 (211)
In Home Care Recipients	55,640	921	19,331	249	11,249	5,398	960	11,919	5,613

Cases in care recipients (deaths)

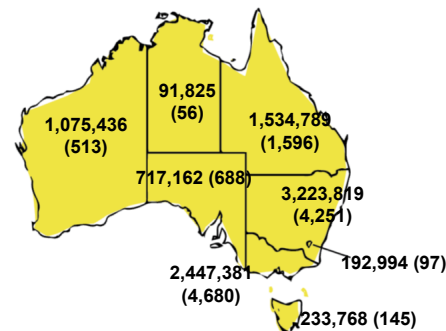
CASES BY AGE GROUP AND SEX



DEATHS BY AGE GROUP AND SEX

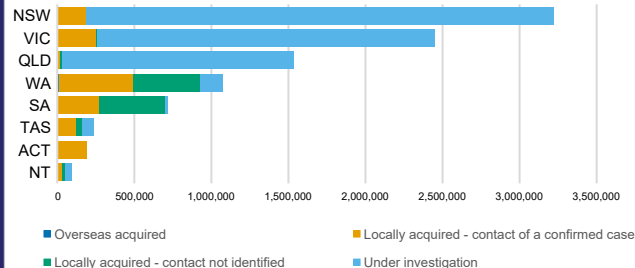


CASES (DEATHS) BY STATE AND TERRITORIES



CASES BY SOURCE OF INFECTION

Australia (% of all confirmed cases)



PUBLIC HEALTH RESPONSE MEASURE

Proportion of total cases under investigation

