



CURRENT STATUS OF CONFIRMED CASES



161



**CURRENT CASES
INTENSIVE CARE UNITS (ICU)**

ACT	NSW	NT	QLD	SA	TAS	VIC	WA
1	67	0	30	11	3	32	17



5,104

**CURRENT CASES
ADMITTED TO HOSPITALS**

ACT	NSW	NT	QLD	SA	TAS	VIC	WA
147	2,257	58	906	341	158	813	424

76,145,451

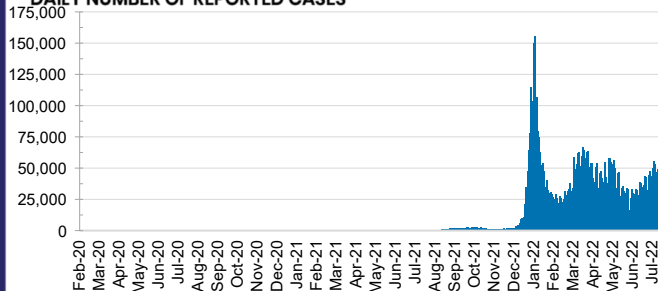


**TOTAL TESTS
REPORTED**

ACT	NSW	NT	QLD
1,259,942	33,684,167	818,451	8,131,859

SA	TAS	VIC	WA
5,353,398	743,701	21,817,095	4,336,838

DAILY NUMBER OF REPORTED CASES

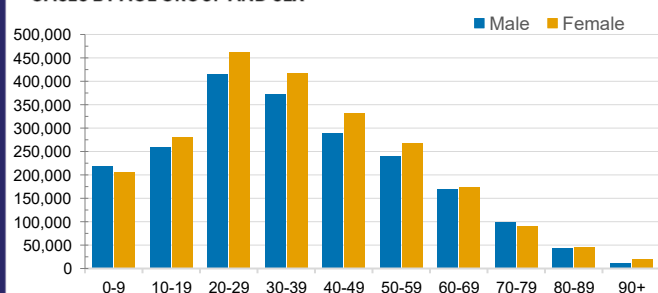


CASES IN AGED CARE SERVICES

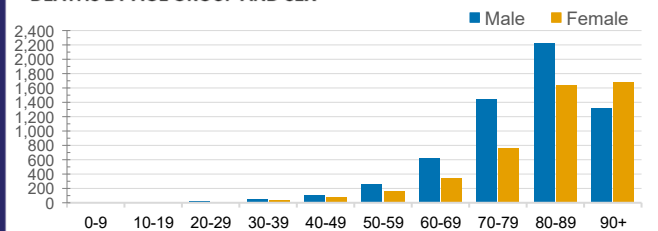
Confirmed Cases	Australia	ACT	NSW	NT	QLD	SA	TAS	VIC	WA
Residential Care Recipients	77370 (3394)	990 (42)	25757 (1163)	265 (7)	(479)	6164 (270)	1920 (36)	22561 (1188)	6349 (209)
In Home Care Recipients	54,509	920	18,856	245	11,093	5,234	940	11,628	5,593

Cases in care recipients (deaths)

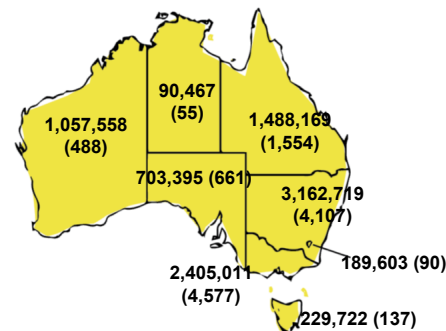
CASES BY AGE GROUP AND SEX



DEATHS BY AGE GROUP AND SEX

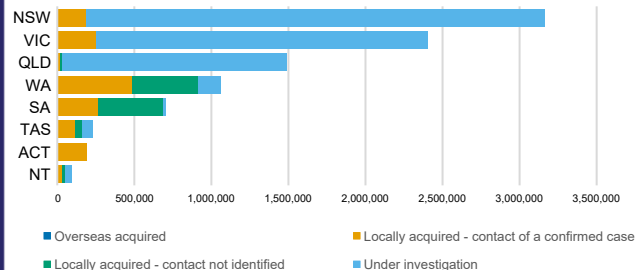


CASES (DEATHS) BY STATE AND TERRITORIES



CASES BY SOURCE OF INFECTION

Australia (% of all confirmed cases)



PUBLIC HEALTH RESPONSE MEASURE

Proportion of total cases under investigation

