



CURRENT STATUS OF CONFIRMED CASES



95



**CURRENT CASES
INTENSIVE CARE UNITS (ICU)**

ACT	NSW	NT	QLD	SA	TAS	VIC	WA
2	47	0	10	7	1	22	6

3,036



**CURRENT CASES
ADMITTED TO HOSPITALS**

ACT	NSW	NT	QLD	SA	TAS	VIC	WA
106	1,879	12	283	153	32	343	228

78,073,544

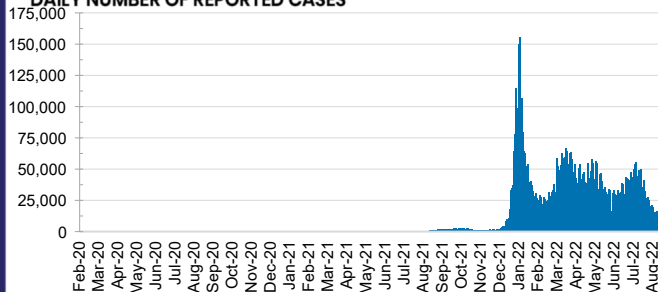


**TOTAL TESTS
REPORTED**

ACT	NSW	NT	QLD
1,309,833	34,578,862	833,401	8,397,341

SA	TAS	VIC	WA
5,541,997	772,304	22,147,606	4,492,200

DAILY NUMBER OF REPORTED CASES

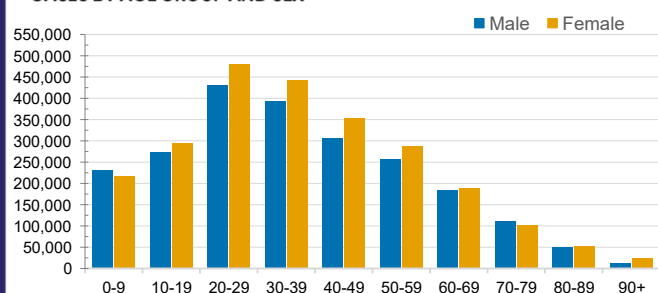


CASES IN AGED CARE SERVICES

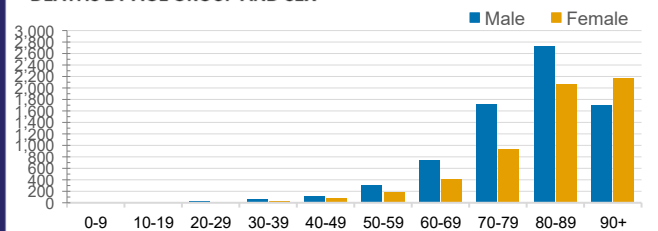
Confirmed Cases	Australia	ACT	NSW	NT	QLD	SA	TAS	VIC	WA
Residential Care Recipients	88864 (3868)	1233 (53)	29932 (1380)	307 (10)	15300 (564)	7451 (332)	2191 (37)	25367 (1269)	7083 (223)
In Home Care Recipients	58,958	957	20,809	269	11,880	5,720	1,011	12,518	5,794

Cases in care recipients (deaths)

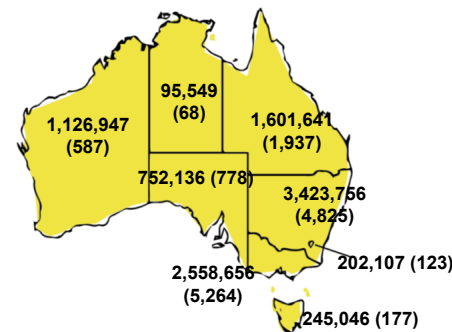
CASES BY AGE GROUP AND SEX



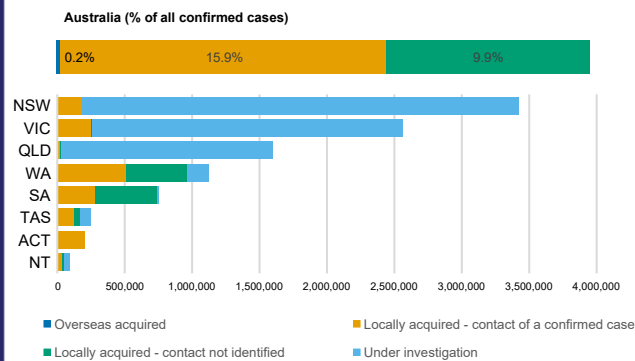
DEATHS BY AGE GROUP AND SEX



CASES (DEATHS) BY STATE AND TERRITORIES



CASES BY SOURCE OF INFECTION



PUBLIC HEALTH RESPONSE MEASURE

