



**CURRENT STATUS OF CONFIRMED CASES**



**90**



**CURRENT CASES  
INTENSIVE CARE UNITS (ICU)**

ACT	NSW	NT	QLD	SA	TAS	VIC	WA
2	36	0	16	10	1	18	7

**3,054**



**CURRENT CASES  
ADMITTED TO HOSPITALS**

ACT	NSW	NT	QLD	SA	TAS	VIC	WA
112	1,780	19	321	176	35	386	225

**77,968,022**

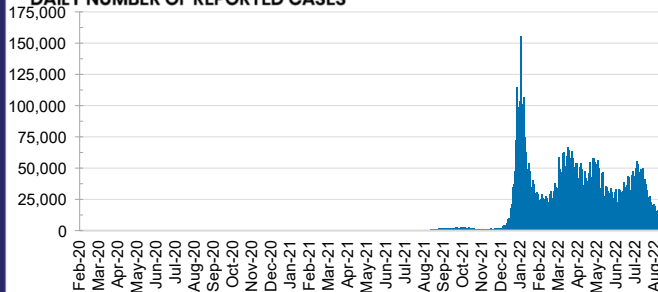


**TOTAL TESTS  
REPORTED**

ACT	NSW	NT	QLD
1,307,070	34,520,544	832,508	8,384,344

SA	TAS	VIC	WA
5,541,997	770,538	22,126,778	4,484,243

**DAILY NUMBER OF REPORTED CASES**

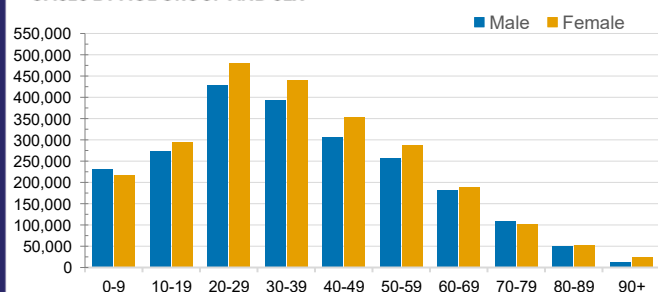


**CASES IN AGED CARE SERVICES**

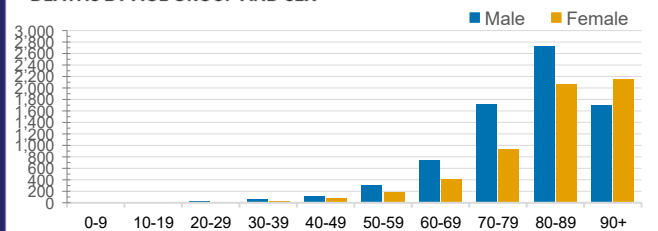
Confirmed Cases	Australia	ACT	NSW	NT	QLD	SA	TAS	VIC	WA
Residential Care Recipients	88608 (3858)	1224 (52)	29801 (1374)	307 (10)	15256 (564)	7468 (330)	2191 (37)	25289 (1268)	7072 (223)
In Home Care Recipients	58,896	954	20,760	269	11,858	5,746	1,011	12,490	5,808

Cases in care recipients (deaths)

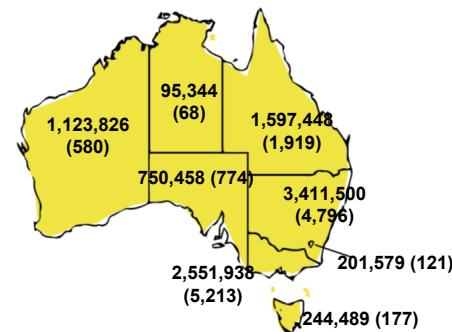
**CASES BY AGE GROUP AND SEX**



**DEATHS BY AGE GROUP AND SEX**

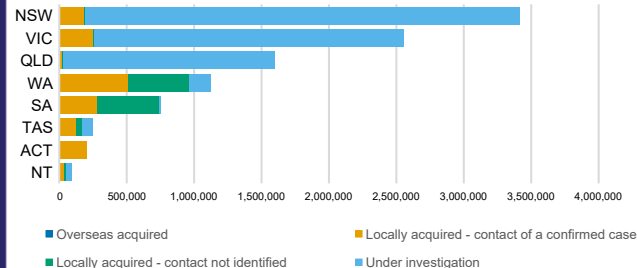


**CASES (DEATHS) BY STATE AND TERRITORIES**



**CASES BY SOURCE OF INFECTION**

Australia (% of all confirmed cases)



**PUBLIC HEALTH RESPONSE MEASURE**

Proportion of total cases under investigation

