



CURRENT STATUS OF CONFIRMED CASES



95



**CURRENT CASES
INTENSIVE CARE UNITS (ICU)**

ACT	NSW	NT	QLD	SA	TAS	VIC	WA
2	37	2	16	8	2	22	6

3,237



**CURRENT CASES
ADMITTED TO HOSPITALS**

ACT	NSW	NT	QLD	SA	TAS	VIC	WA
109	1,836	20	343	257	42	405	225

77,915,441

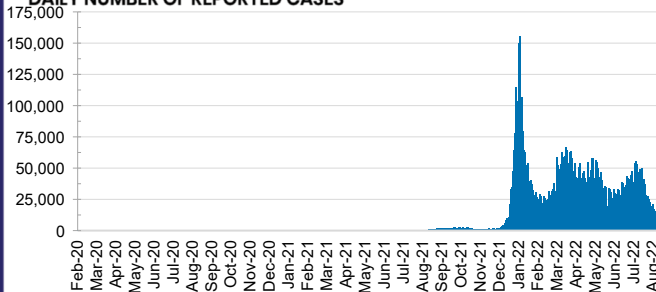


**TOTAL TESTS
REPORTED**

ACT	NSW	NT	QLD
1,306,066	34,493,174	832,161	8,376,402

SA	TAS	VIC	WA
5,536,298	769,541	22,121,613	4,480,186

DAILY NUMBER OF REPORTED CASES

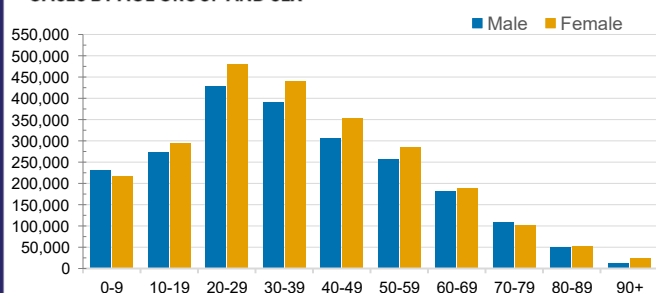


CASES IN AGED CARE SERVICES

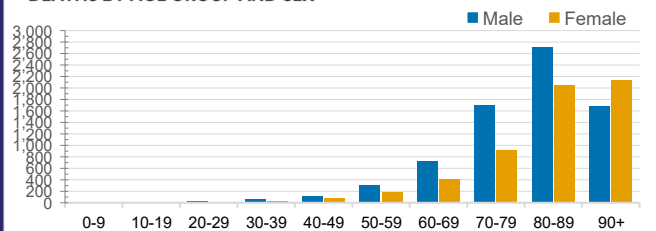
Confirmed Cases	Australia	ACT	NSW	NT	QLD	SA	TAS	VIC	WA
Residential Care Recipients	88253 (3851)	1197 (52)	29656 (1368)	307 (10)	15188 (564)	7462 (330)	2180 (37)	25208 (1268)	7055 (222)
In Home Care Recipients	58,806	951	20,700	269	11,848	5,738	1,014	12,478	5,808

Cases in care recipients (deaths)

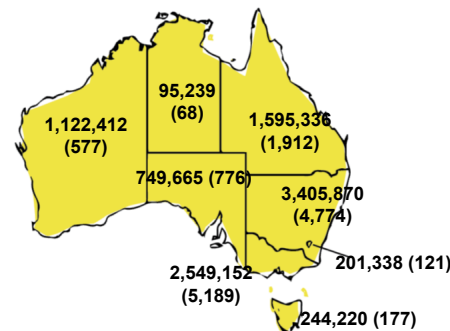
CASES BY AGE GROUP AND SEX



DEATHS BY AGE GROUP AND SEX

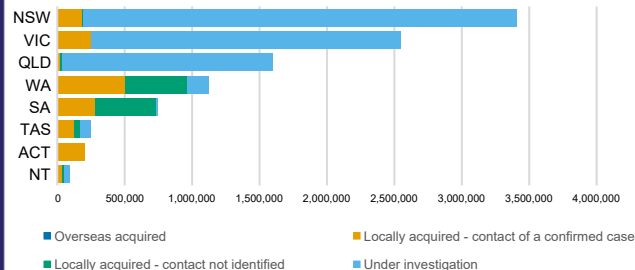


CASES (DEATHS) BY STATE AND TERRITORIES



CASES BY SOURCE OF INFECTION

Australia (% of all confirmed cases)



PUBLIC HEALTH RESPONSE MEASURE

Proportion of total cases under investigation

