



**CURRENT STATUS OF CONFIRMED CASES**



**102**



**CURRENT CASES  
INTENSIVE CARE UNITS (ICU)**

ACT	NSW	NT	QLD	SA	TAS	VIC	WA
2	49	0	10	8	2	26	5

**3,457**



**CURRENT CASES  
ADMITTED TO HOSPITALS**

ACT	NSW	NT	QLD	SA	TAS	VIC	WA
119	1,928	26	411	242	55	433	243

**77,789,623**

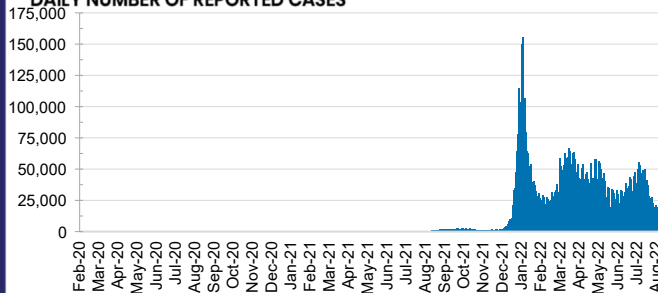


**TOTAL TESTS  
REPORTED**

ACT	NSW	NT	QLD
1,303,160	34,435,969	831,171	8,357,895

SA	TAS	VIC	WA
5,525,645	767,720	22,097,090	4,470,973

**DAILY NUMBER OF REPORTED CASES**

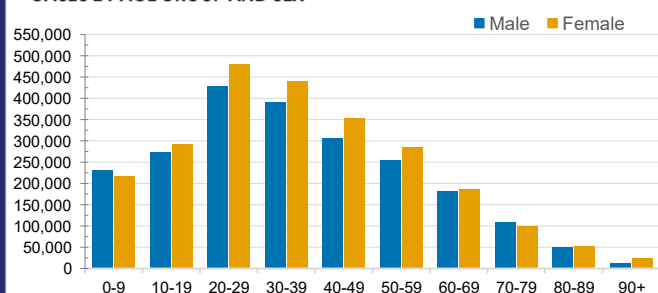


**CASES IN AGED CARE SERVICES**

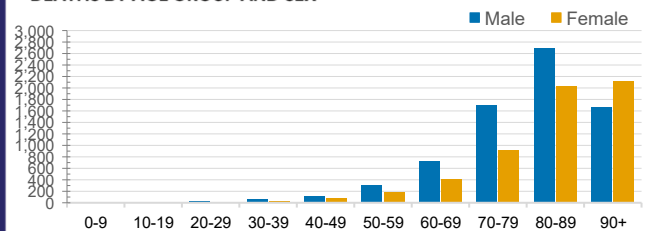
Confirmed Cases	Australia	ACT	NSW	NT	QLD	SA	TAS	VIC	WA
Residential Care Recipients	87578 (3826)	1194 (51)	29395 (1350)	307 (10)	15079 (563)	7400 (327)	2168 (37)	25059 (1267)	6976 (221)
In Home Care Recipients	58,636	950	20,626	269	11,811	5,740	1,014	12,444	5,782

Cases in care recipients (deaths)

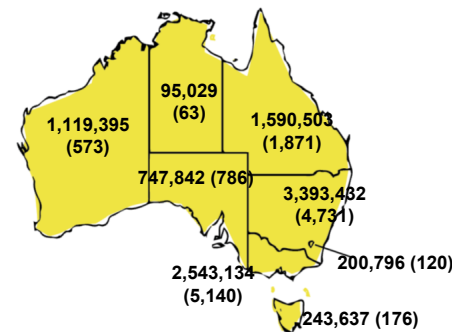
**CASES BY AGE GROUP AND SEX**



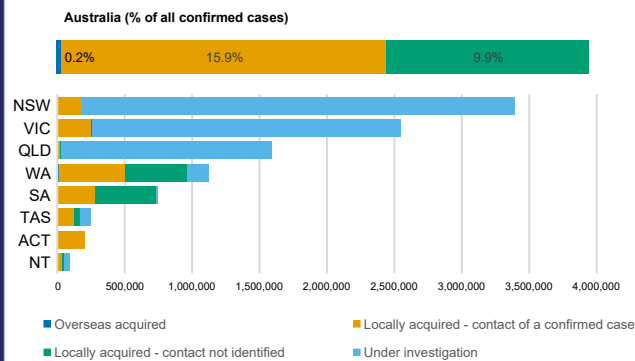
**DEATHS BY AGE GROUP AND SEX**



**CASES (DEATHS) BY STATE AND TERRITORIES**



**CASES BY SOURCE OF INFECTION**



**PUBLIC HEALTH RESPONSE MEASURE**

