



CURRENT STATUS OF CONFIRMED CASES



184

CURRENT CASES
INTENSIVE CARE UNITS (ICU)



ACT	NSW	NT	QLD	SA	TAS	VIC	WA
3	76	1	28	9	9	44	14

5,002

CURRENT CASES
ADMITTED TO HOSPITALS



ACT	NSW	NT	QLD	SA	TAS	VIC	WA
158	2,289	53	815	352	129	802	404

76,448,873

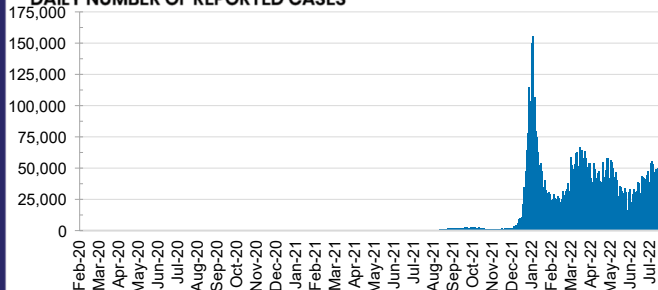
TOTAL TESTS
REPORTED



ACT	NSW	NT	QLD
1,267,546	33,795,941	820,177	8,203,786

SA	TAS	VIC	WA
5,385,482	748,003	21,866,581	4,361,357

DAILY NUMBER OF REPORTED CASES

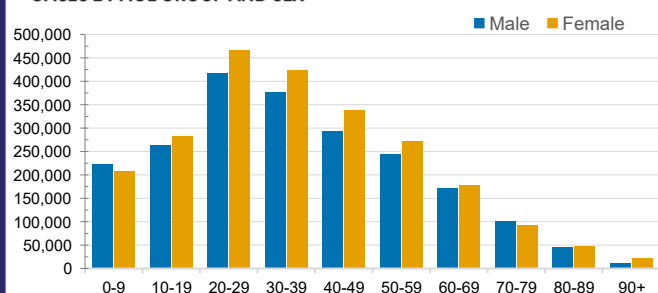


CASES IN AGED CARE SERVICES

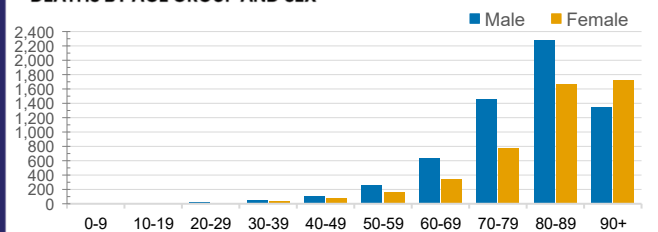
Confirmed Cases	Australia	ACT	NSW	NT	QLD	SA	TAS	VIC	WA
Residential Care Recipients	79196 (3475)	1015 (42)	26416 (1204)	265 (7)	(505)	6391 (275)	1962 (36)	23011 (1197)	6453 (209)
In Home Care Recipients	55,279	918	19,170	245	11,197	5,345	957	11,835	0

Cases in care recipients (deaths)

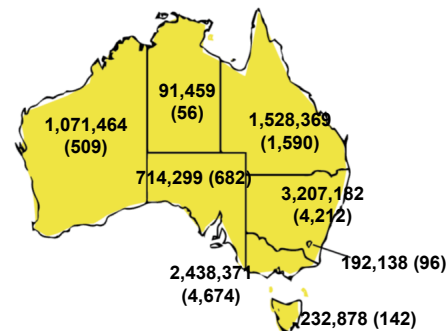
CASES BY AGE GROUP AND SEX



DEATHS BY AGE GROUP AND SEX

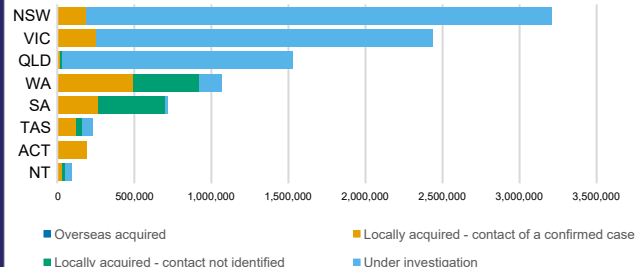


CASES (DEATHS) BY STATE AND TERRITORIES



CASES BY SOURCE OF INFECTION

Australia (% of all confirmed cases)



PUBLIC HEALTH RESPONSE MEASURE

Proportion of total cases under investigation

