



CURRENT STATUS OF CONFIRMED CASES



122



**CURRENT CASES
INTENSIVE CARE UNITS (ICU)**

ACT	NSW	NT	QLD	SA	TAS	VIC	WA
2	54	1	21	8	2	27	7



3,726

**CURRENT CASES
ADMITTED TO HOSPITALS**

ACT	NSW	NT	QLD	SA	TAS	VIC	WA
129	2,046	40	448	240	59	497	267

77,547,135

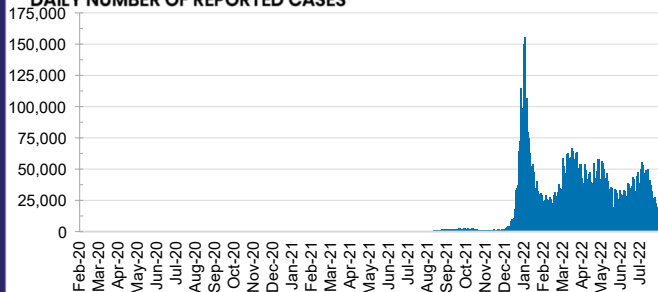


**TOTAL TESTS
REPORTED**

ACT	NSW	NT	QLD
1,296,729	34,319,004	829,016	8,329,410

SA	TAS	VIC	WA
5,501,458	764,142	22,055,393	4,451,983

DAILY NUMBER OF REPORTED CASES

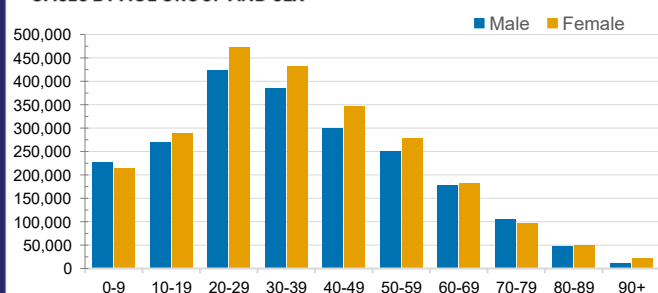


CASES IN AGED CARE SERVICES

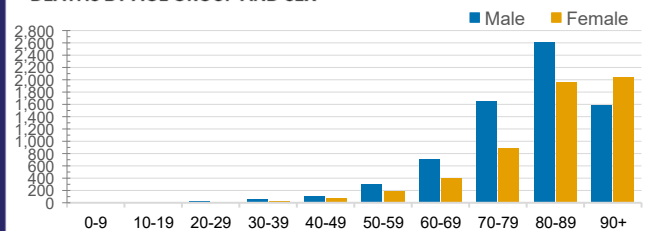
Confirmed Cases	Australia	ACT	NSW	NT	QLD	SA	TAS	VIC	WA
Residential Care Recipients	86567 (3772)	1178 (50)	28963 (1333)	306 (10)	14865 (552)	7295 (318)	2175 (37)	24854 (1252)	6931 (220)
In Home Care Recipients	58,176	948	20,420	267	11,709	5,690	1,001	12,373	5,768

Cases in care recipients (deaths)

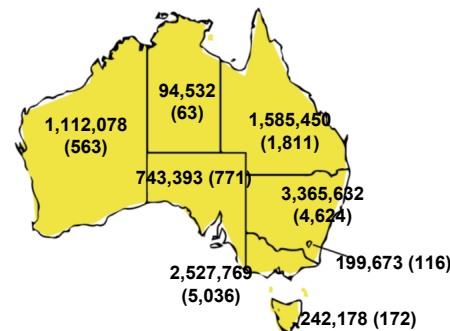
CASES BY AGE GROUP AND SEX



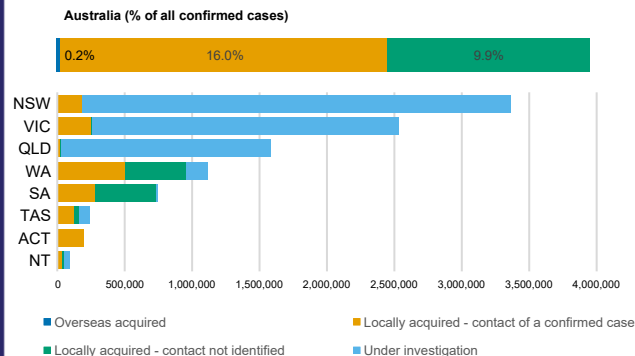
DEATHS BY AGE GROUP AND SEX



CASES (DEATHS) BY STATE AND TERRITORIES



CASES BY SOURCE OF INFECTION



PUBLIC HEALTH RESPONSE MEASURE

