



**CURRENT STATUS OF CONFIRMED CASES**



**140**



**CURRENT CASES  
INTENSIVE CARE UNITS (ICU)**

ACT	NSW	NT	QLD	SA	TAS	VIC	WA
2	60	2	23	13	4	25	11



**3,982**

**CURRENT CASES  
ADMITTED TO HOSPITALS**

ACT	NSW	NT	QLD	SA	TAS	VIC	WA
138	2,141	40	487	286	61	535	294

**77,406,053**

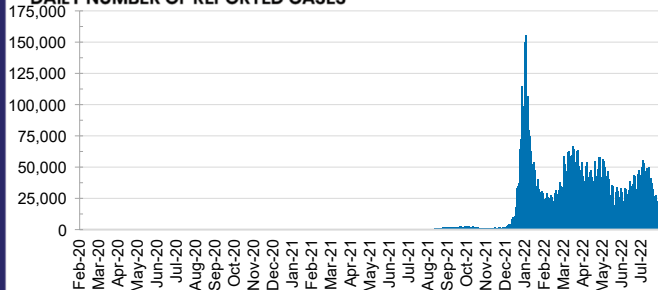


**TOTAL TESTS  
REPORTED**

ACT	NSW	NT	QLD
1,293,193	34,250,510	827,865	8,311,582

SA	TAS	VIC	WA
5,487,064	762,027	22,032,188	4,441,624

**DAILY NUMBER OF REPORTED CASES**

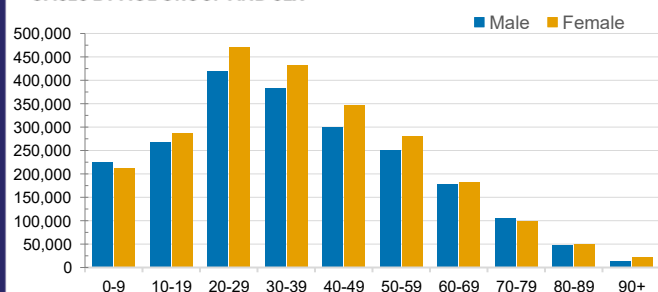


**CASES IN AGED CARE SERVICES**

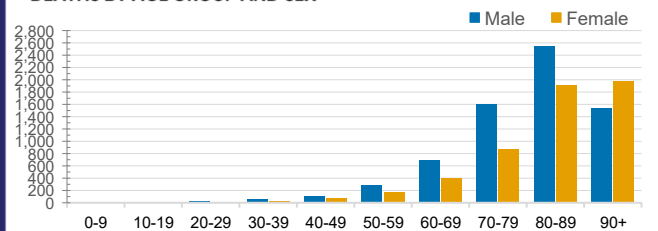
Confirmed Cases	Australia	ACT	NSW	NT	QLD	SA	TAS	VIC	WA
Residential Care Recipients	85605 (3742)	1177 (49)	28543 (1318)	306 (10)	14741 (547)	7178 (312)	2165 (37)	24626 (1250)	6869 (219)
In Home Care Recipients	57,876	947	20,247	265	11,690	5,675	996	12,325	5,731

Cases in care recipients (deaths)

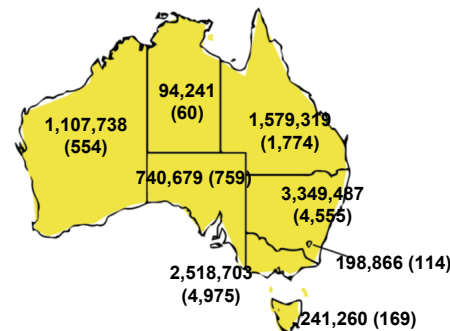
**CASES BY AGE GROUP AND SEX**



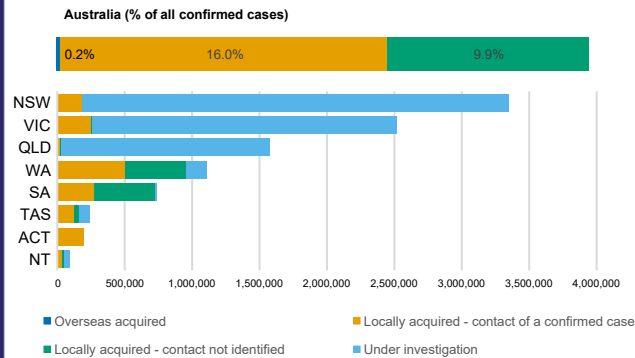
**DEATHS BY AGE GROUP AND SEX**



**CASES (DEATHS) BY STATE AND TERRITORIES**



**CASES BY SOURCE OF INFECTION**



**PUBLIC HEALTH RESPONSE MEASURE**

