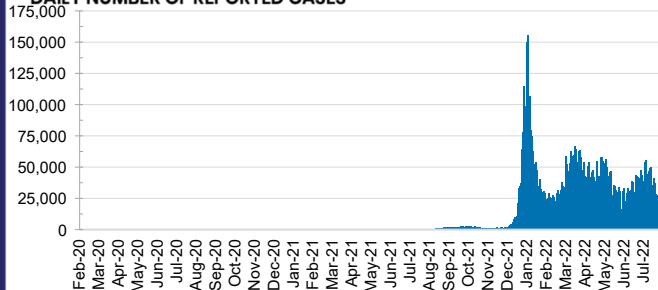




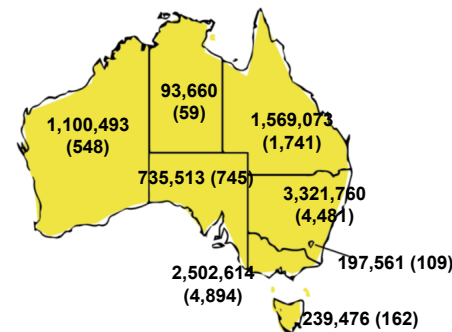
**CURRENT STATUS OF CONFIRMED CASES**



**DAILY NUMBER OF REPORTED CASES**



**CASES (DEATHS) BY STATE AND TERRITORIES**



**140**



ACT	NSW	NT	QLD	SA	TAS	VIC	WA
4	62	1	18	10	4	30	11

**4,098**



ACT	NSW	NT	QLD	SA	TAS	VIC	WA
135	2,194	36	543	256	76	550	308

**77,198,954**



ACT	NSW	NT	QLD
1,287,393	34,154,741	826,070	8,288,738

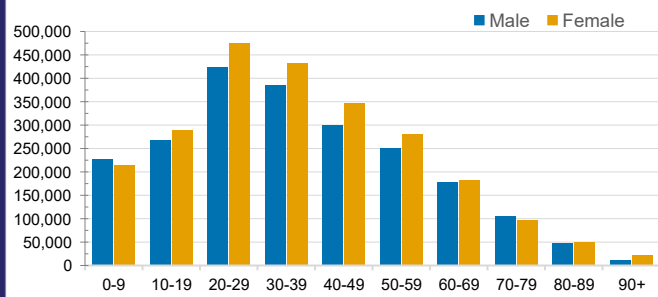
SA	TAS	VIC	WA
5,465,110	758,832	21,995,295	4,422,775

**CASES IN AGED CARE SERVICES**

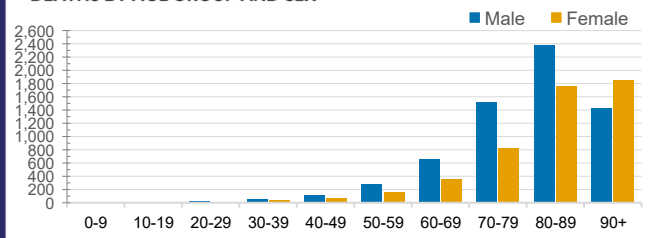
Confirmed Cases	Australia	ACT	NSW	NT	QLD	SA	TAS	VIC	WA
Residential Care Recipients	84517 (3702)	1170 (48)	28179 (1295)	304 (10)	14528 (543)	7072 (309)	2114 (37)	24380 (1242)	6770 (218)
In Home Care Recipients	57,479	938	20,053	262	11,647	5,618	989	12,279	5,693

Cases in care recipients (deaths)

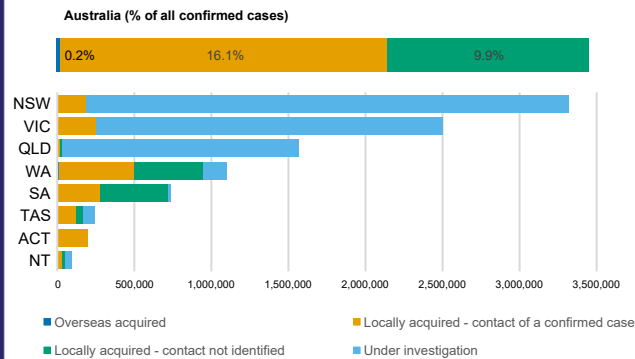
**CASES BY AGE GROUP AND SEX**



**DEATHS BY AGE GROUP AND SEX**



**CASES BY SOURCE OF INFECTION**



**PUBLIC HEALTH RESPONSE MEASURE**

