



**CURRENT STATUS OF CONFIRMED CASES**



**135**



ACT	NSW	NT	QLD	SA	TAS	VIC	WA
4	64	2	18	7	2	27	11



ACT	NSW	NT	QLD	SA	TAS	VIC	WA
135	2,223	43	596	269	80	605	323

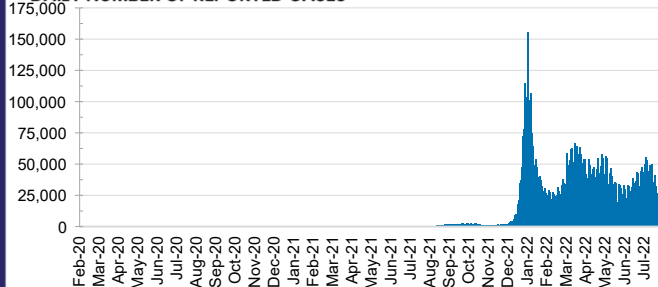
**77,134,169**



ACT	NSW	NT	QLD
1,285,642	34,120,458	825,409	8,280,992

SA	TAS	VIC	WA
5,457,768	757,958	21,988,883	4,417,059

**DAILY NUMBER OF REPORTED CASES**

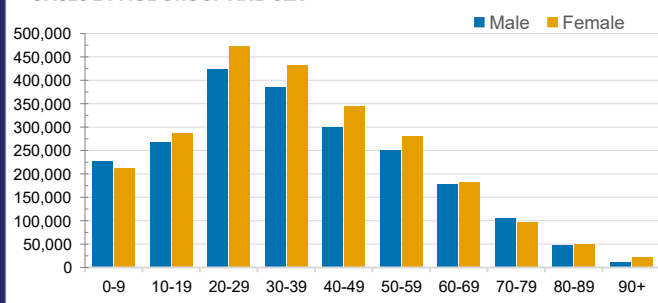


**CASES IN AGED CARE SERVICES**

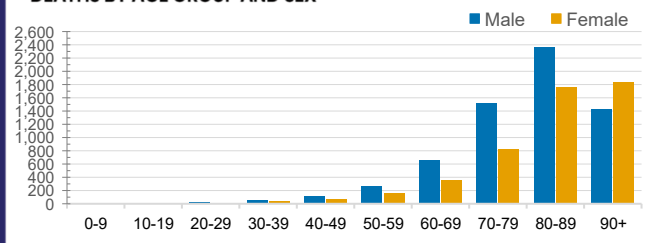
Confirmed Cases	Australia	ACT	NSW	NT	QLD	SA	TAS	VIC	WA
Residential Care Recipients	84059 (3691)	1170 (48)	28062 (1293)	301 (10)	14459 (539)	7032 (309)	2111 (37)	24172 (1237)	6752 (218)
In Home Care Recipients	0	0	0	0	0	0	0	0	0

Cases in care recipients (deaths)

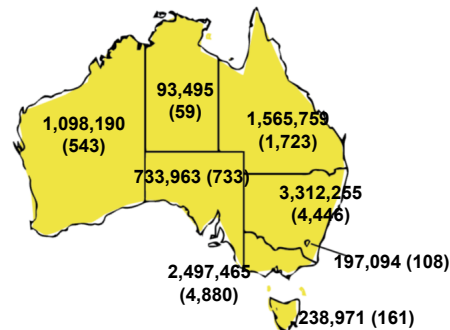
**CASES BY AGE GROUP AND SEX**



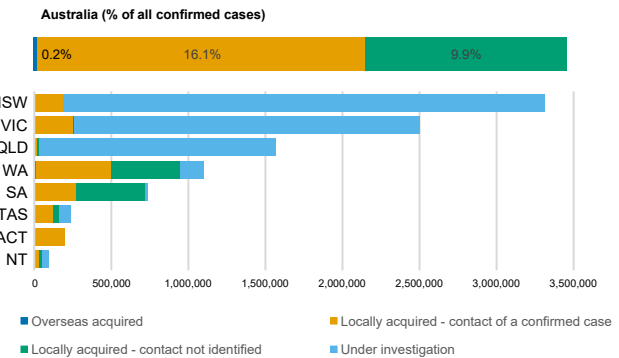
**DEATHS BY AGE GROUP AND SEX**



**CASES (DEATHS) BY STATE AND TERRITORIES**



**CASES BY SOURCE OF INFECTION**



**PUBLIC HEALTH RESPONSE MEASURE**

