



CURRENT STATUS OF CONFIRMED CASES



178



**CURRENT CASES
INTENSIVE CARE UNITS (ICU)**

ACT	NSW	NT	QLD	SA	TAS	VIC	WA
2	69	0	24	12	8	50	13



4,999

**CURRENT CASES
ADMITTED TO HOSPITALS**

ACT	NSW	NT	QLD	SA	TAS	VIC	WA
165	2,323	56	782	350	139	773	411

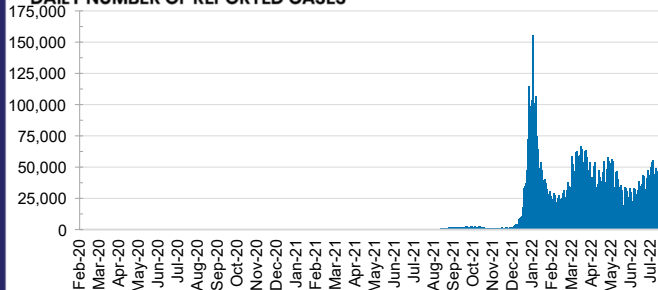


**TOTAL TESTS
REPORTED**

ACT	NSW	NT	QLD
1,265,168	33,780,298	818,451	8,197,671

SA	TAS	VIC	WA
5,376,463	746,831	21,854,978	4,352,136

DAILY NUMBER OF REPORTED CASES

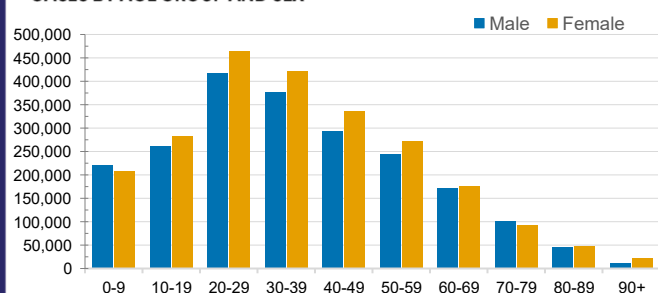


CASES IN AGED CARE SERVICES

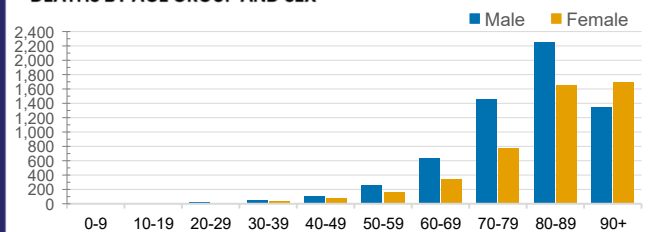
Confirmed Cases	Australia	ACT	NSW	NT	QLD	SA	TAS	VIC	WA
Residential Care Recipients	78190 (3428)	1010 (42)	26067 (1178)	265 (7)	(494)	6235 (270)	1936 (36)	22769 (1193)	6398 (208)
In Home Care Recipients	54,904	917	18,979	245	11,189	5,290	954	11,742	5,588

Cases in care recipients (deaths)

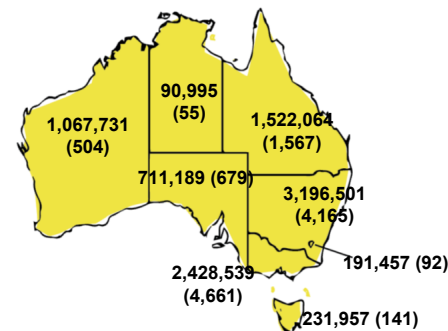
CASES BY AGE GROUP AND SEX



DEATHS BY AGE GROUP AND SEX

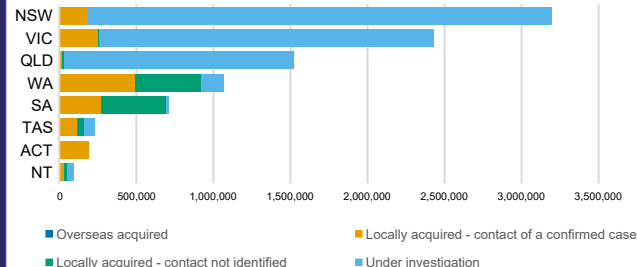


CASES (DEATHS) BY STATE AND TERRITORIES



CASES BY SOURCE OF INFECTION

Australia (% of all confirmed cases)



PUBLIC HEALTH RESPONSE MEASURE

Proportion of total cases under investigation

