



Australian Government
Operation COVID Shield

COVID-19 Vaccine Roll-out Jurisdictional Breakdowns

08 July 2022

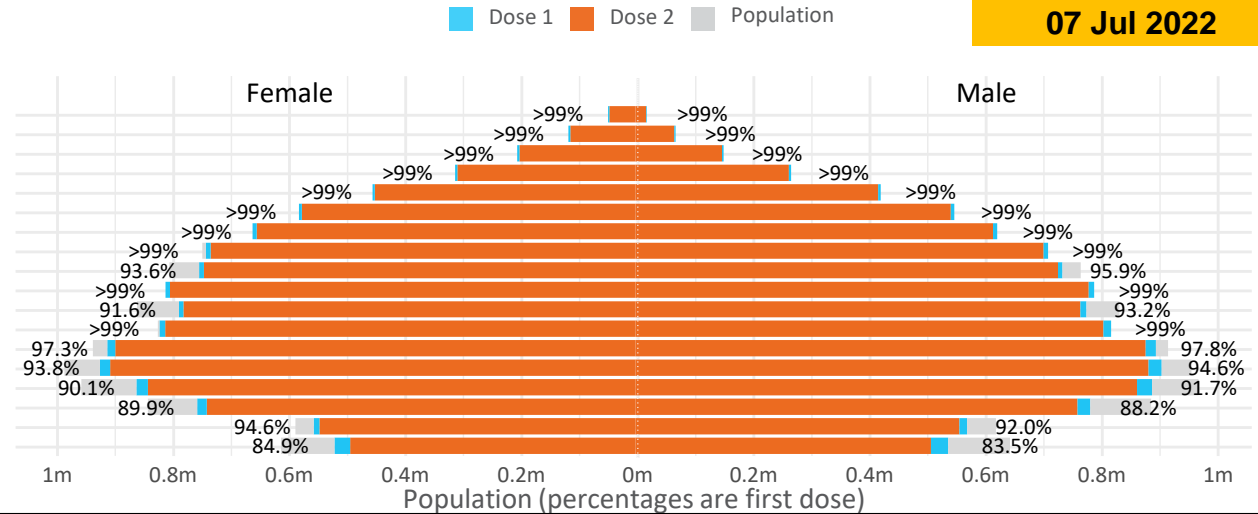
Doses by age and sex

First and second doses by age and sex

	16+	50+	12-15	5-11
Dose 1	97.59% (20,122,872 doses / 20,619,959 people)	>99% (8,937,960 doses / 8,749,703 people)	84.24% (1,047,967 doses / 1,243,990 people)	52.28% (1,190,190 doses / 2,276,638 people)
Dose 2	95.95% (19,785,530 doses / 20,619,959 people)	>99% (8,829,959 doses / 8,749,703 people)	79.72% (991,679 doses / 1,243,990 people)	39.88% (908,033 doses / 2,276,638 people)

Data as at:
07 Jul 2022

Age	Dose 1	Dose 2
95+	66,260 (>99%)	62,798 (>99%)
90-94	183,053 (>99%)	177,550 (>99%)
85-89	352,609 (>99%)	345,876 (>99%)
80-84	573,647 (>99%)	566,520 (>99%)
75-79	867,936 (>99%)	859,435 (>99%)
70-74	1,120,063 (>99%)	1,108,634 (>99%)
65-69	1,272,634 (>99%)	1,257,687 (>99%)
60-64	1,439,581 (>99%)	1,422,986 (>99%)
55-59	1,475,715 (94.9%)	1,458,975 (93.8%)
50-54	1,586,462 (>99%)	1,569,498 (>99%)
45-49	1,550,522 (92.5%)	1,532,146 (91.4%)
40-44	1,627,264 (>99%)	1,603,250 (99.0%)
35-39	1,794,911 (97.8%)	1,762,669 (96.1%)
30-34	1,820,465 (94.6%)	1,778,396 (92.4%)
25-29	1,743,911 (91.5%)	1,695,873 (89.0%)
20-24	1,531,225 (89.4%)	1,490,725 (87.1%)
16-19	1,116,614 (93.4%)	1,092,512 (91.4%)
12-15	1,047,967 (84.2%)	991,679 (79.7%)



	AUS	ACT	NSW	NT	QLD	SA	TAS	VIC	WA
16 and over - dose 1	20,122,872	353,717	6,346,162	173,947	3,877,430	1,380,195	446,276	5,178,485	2,102,051
16 and over - dose 2	19,785,530	347,959	6,247,526	169,268	3,813,618	1,350,892	437,279	5,099,654	2,070,977
16 and over - population	20,619,959*	344,037	6,565,651	190,571	4,112,707	1,440,400	440,172	5,407,574	2,114,978
16 and over % with dose 1	97.59%	>99%	96.66%	91.28%	94.28%	95.82%	>99%	95.76%	>99%
16 and over % with dose 2	95.95%	>99%	95.15%	88.82%	92.73%	93.79%	>99%	94.31%	97.92%
5 to 11 - dose 1	1,190,190	31,719	355,591	13,123	206,165	83,518	28,415	324,224	139,935
5 to 11 - dose 2	908,033	27,488	277,770	8,816	151,226	63,960	23,241	248,041	102,895
5 to 11 - population	2,276,638	39,789	716,460	24,750	478,731	148,816	45,033	578,499	244,154
5 to 11 % with dose 1	52.28%	79.72%	49.63%	53.02%	43.06%	56.12%	63.10%	56.05%	57.31%
5 to 11 % with dose 2	39.88%	69.08%	38.77%	35.62%	31.59%	42.98%	51.61%	42.88%	42.14%
12 to 15 - dose 1	1,047,967	20,126	322,313	10,726	205,377	68,165	22,789	273,818	115,415
12 to 15 - dose 2	991,679	19,569	307,871	9,670	191,752	64,382	21,678	261,934	106,809
12 to 15 - population	1,243,990	19,693	390,330	13,060	270,146	82,747	26,308	308,611	132,869
12 to 15 % with dose 1	84.24%	>99%	82.57%	82.13%	76.02%	82.38%	86.62%	88.73%	86.86%
12 to 15 % with dose 2	79.72%	>99%	78.87%	74.04%	70.98%	77.81%	82.40%	84.88%	80.39%

*National population will not equal sum of listed jurisdictions due to a small number of people counted in national population residing in some 'other' territories. Sum of state doses will not add to national total as some records are unable to be geocoded to a State or Territory. Doses sourced from Australian Immunisation Register, population from ABS ERP June 2020

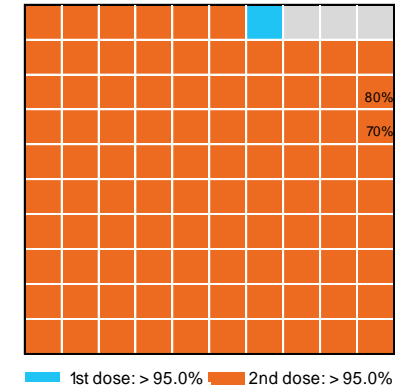
Vaccinations by State – National Summary

Data as at:
07 Jul 2022

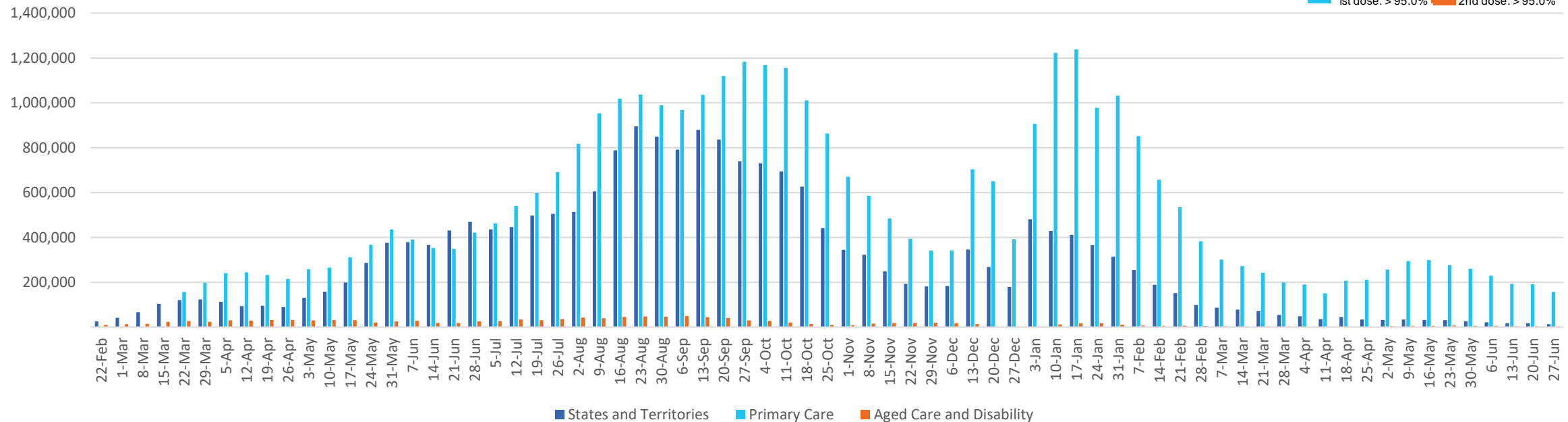
Past 7 days

	01/07/2022	02/07/2022	03/07/2022	04/07/2022	05/07/2022	06/07/2022	07/07/2022	7 day total
State and Territory	2,091	1,184	655	2,330	3,738	3,140	3,581	16,719
Aged Care and Disability	345	37	11	451	366	395	477	2,082
Primary Care	28,817	8,142	2,942	28,988	34,658	37,223	44,869	185,639
Total (rounded)	31 K	9 K	4 K	32 K	39 K	41 K	49 K	204 K

Eligible population by % coverage



Doses administered by channel

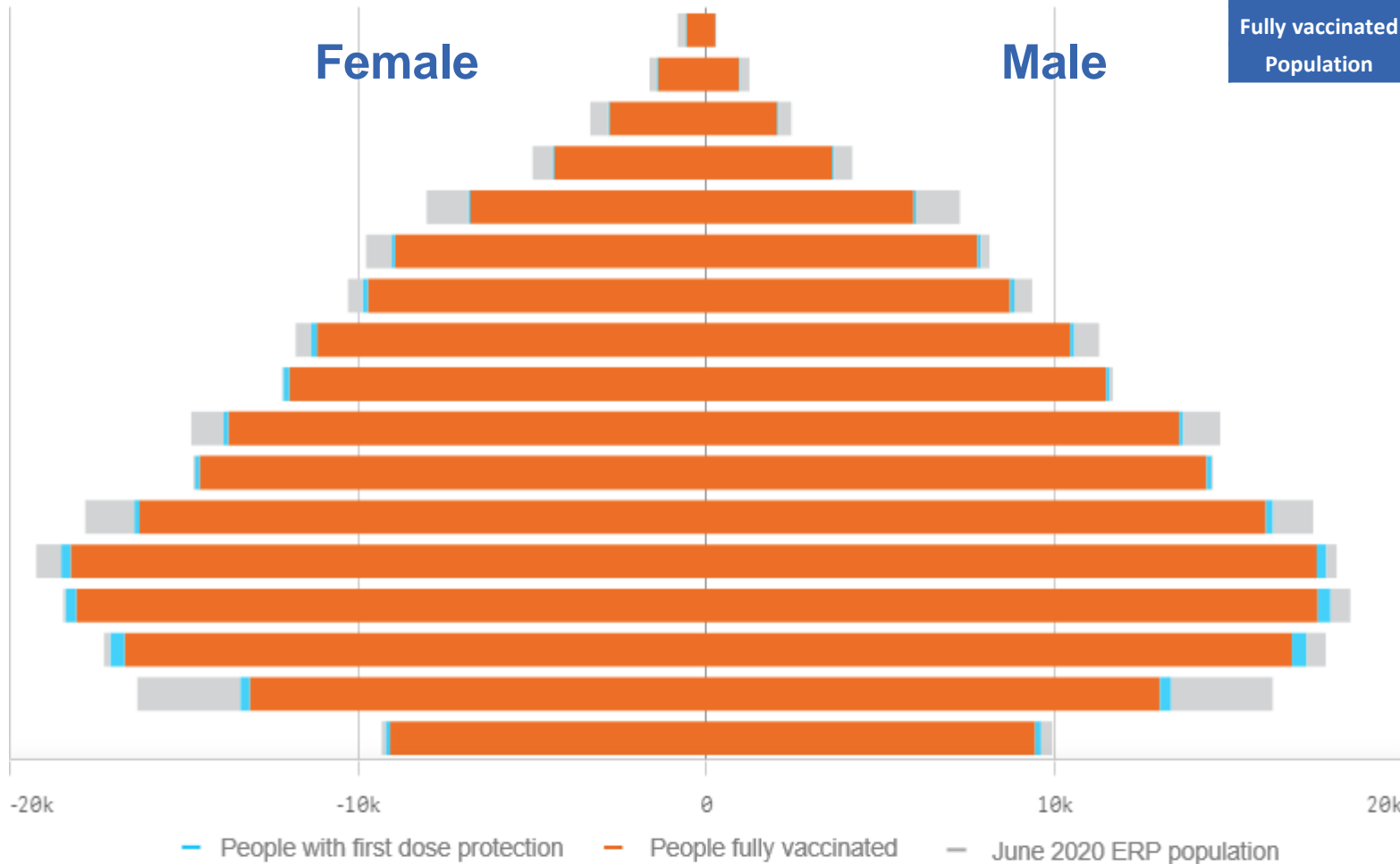


*Administration state breakdown indicates state in which a vaccine was administered and may differ to residential state. Recent weeks may be understated.

Data as at:
07 Jul 2022

Vaccinations by State or Territory of residence

Australian Capital Territory



	16+		50+		70+	
At least one dose	>95%	353,717	>95%	138,336	>95%	46,164
Fully vaccinated	>95%	347,959	>95%	136,471	>95%	45,504
Population	344,037		127,802		39,946	

Age	At least one dose	Fully vaccinated
95+	>95%	>95%
90-94	>95%	>95%
85-89	>95%	>95%
80-84	>95%	>95%
75-79	>95%	>95%
70-74	>95%	>95%
65-69	>95%	>95%
60-64	>95%	>95%
55-59	>95%	>95%
50-54	>95%	>95%
45-49	>95%	>95%
40-44	>95%	>95%
35-39	>95%	>95%
30-34	>95%	>95%
25-29	>95%	>95%
20-24	82.53%	80.48%
16-19	>95%	>95%

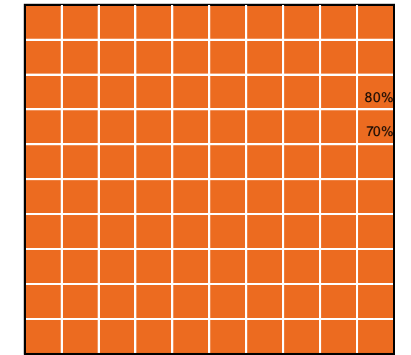
Vaccinations by State – Australian Capital Territory

Data as at:
07 Jul 2022

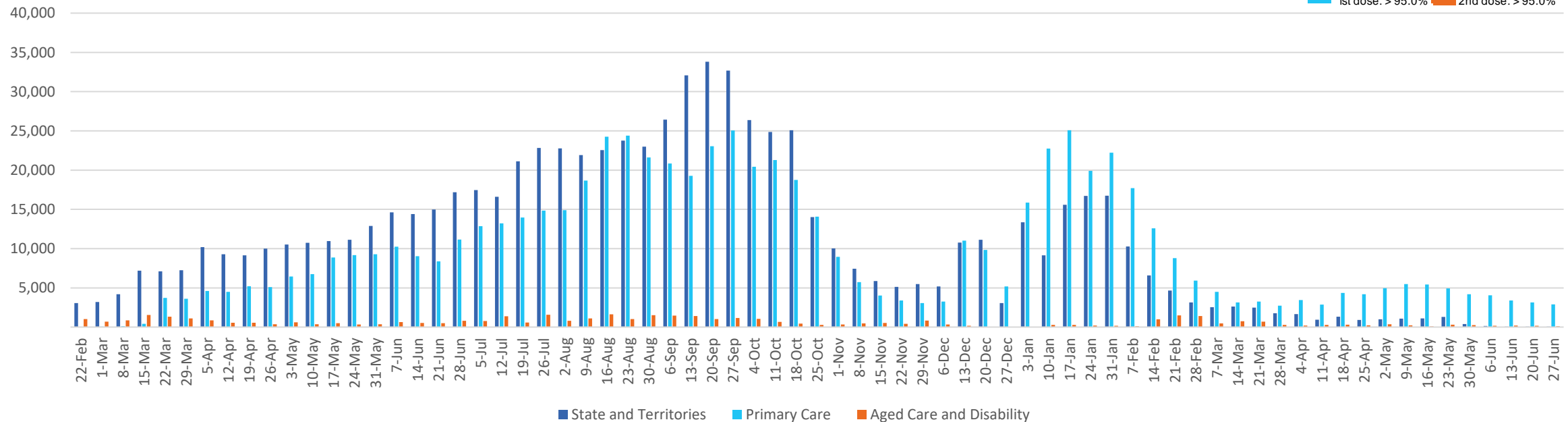
Past 7 days

	01/07/2022	02/07/2022	03/07/2022	04/07/2022	05/07/2022	06/07/2022	07/07/2022	7 day total
State and Territory	493	129	62	660	593	527	488	2,952
Aged Care and Disability	73	<10	<10	<10	99	<10	46	229
Primary Care	553	250	67	575	668	707	779	3,599
Total (rounded)	1 K	0 K	0 K	1 K	1 K	1 K	1 K	7 K

Eligible population by % coverage



Doses administered by channel

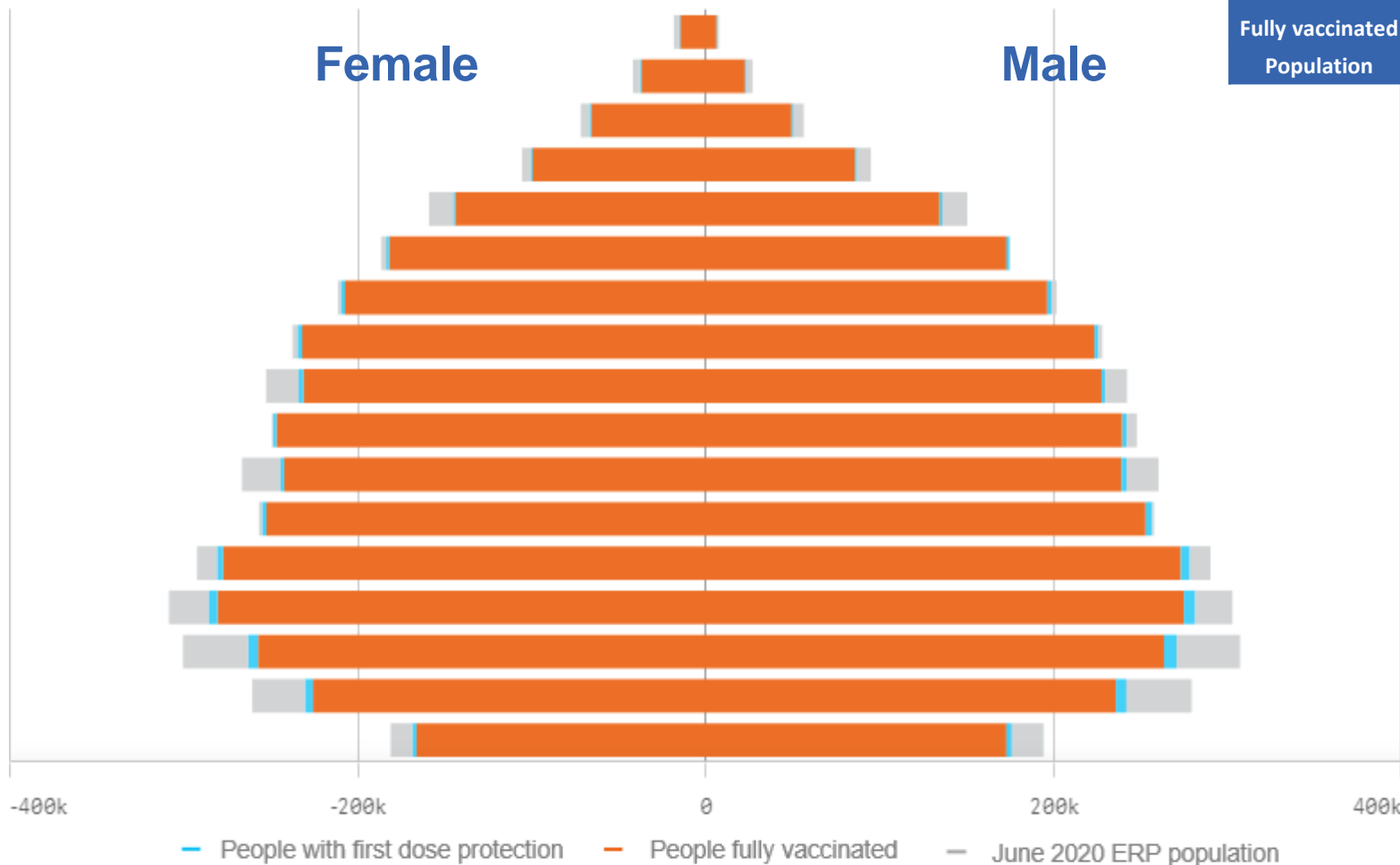


*Administration state breakdown indicates state in which a vaccine was administered and may differ to residential state. Recent weeks may be understated.

Data as at:
07 Jul 2022

Vaccinations by State or Territory of residence

New South Wales



	16+	50+	70+
At least one dose	>95% 6,346,162	>95% 2,857,201	>95% 1,029,731
Fully vaccinated	>95% 6,247,526	>95% 2,823,083	>95% 1,016,307
Population	6,565,651	2,807,793	962,606

Age	At least one dose	Fully vaccinated
95+	>95%	>95%
90-94	>95%	>95%
85-89	>95%	>95%
80-84	>95%	>95%
75-79	>95%	>95%
70-74	>95%	>95%
65-69	>95%	>95%
60-64	>95%	>95%
55-59	93.86%	92.79%
50-54	>95%	>95%
45-49	92.44%	91.45%
40-44	>95%	>95%
35-39	>95%	94.73%
30-34	93.23%	91.22%
25-29	88.40%	86.11%
20-24	87.84%	85.71%
16-19	91.90%	90.40%

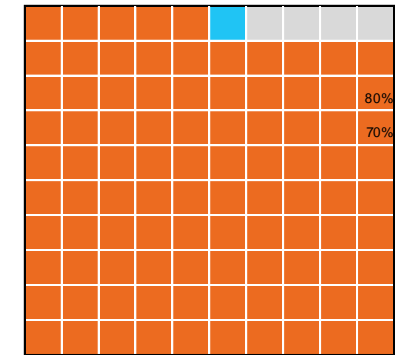
Data as at:
07 Jul 2022

Vaccinations by State – New South Wales

Past 7 days

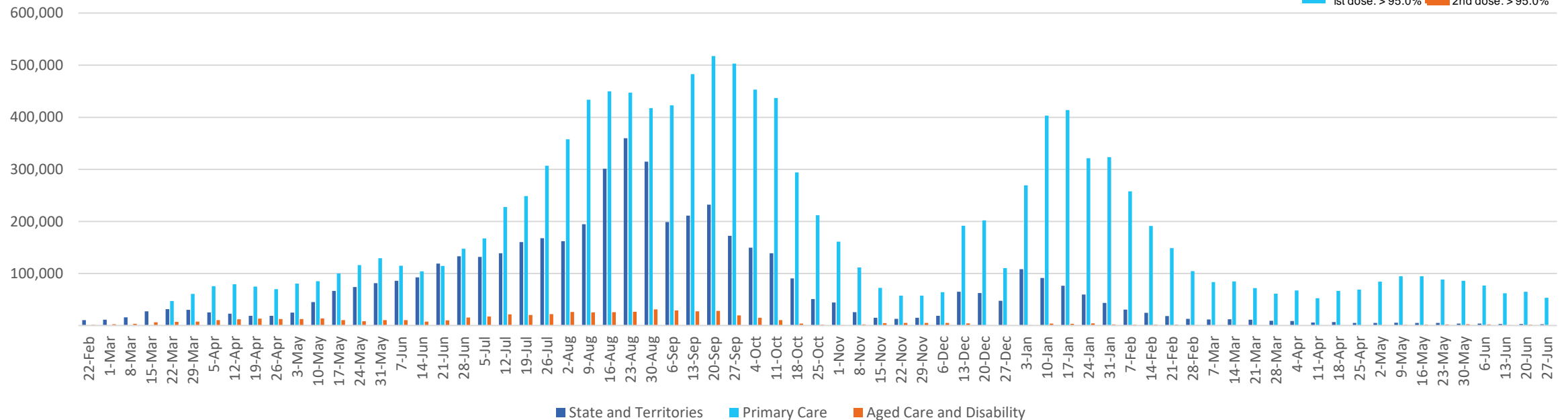
	01/07/2022	02/07/2022	03/07/2022	04/07/2022	05/07/2022	06/07/2022	07/07/2022	7 day total
State and Territory	<10	<10	<10	403	1,497	426	700	3,041
Aged Care and Disability	118	<10	<10	175	70	148	165	676
Primary Care	9,583	2,875	937	9,246	11,655	13,004	15,474	62,774
Total (rounded)	10 K	3 K	1 K	10 K	13 K	14 K	16 K	66 K

Eligible population by % coverage



1st dose: > 95.0% 2nd dose: > 95.0%

Doses administered by channel

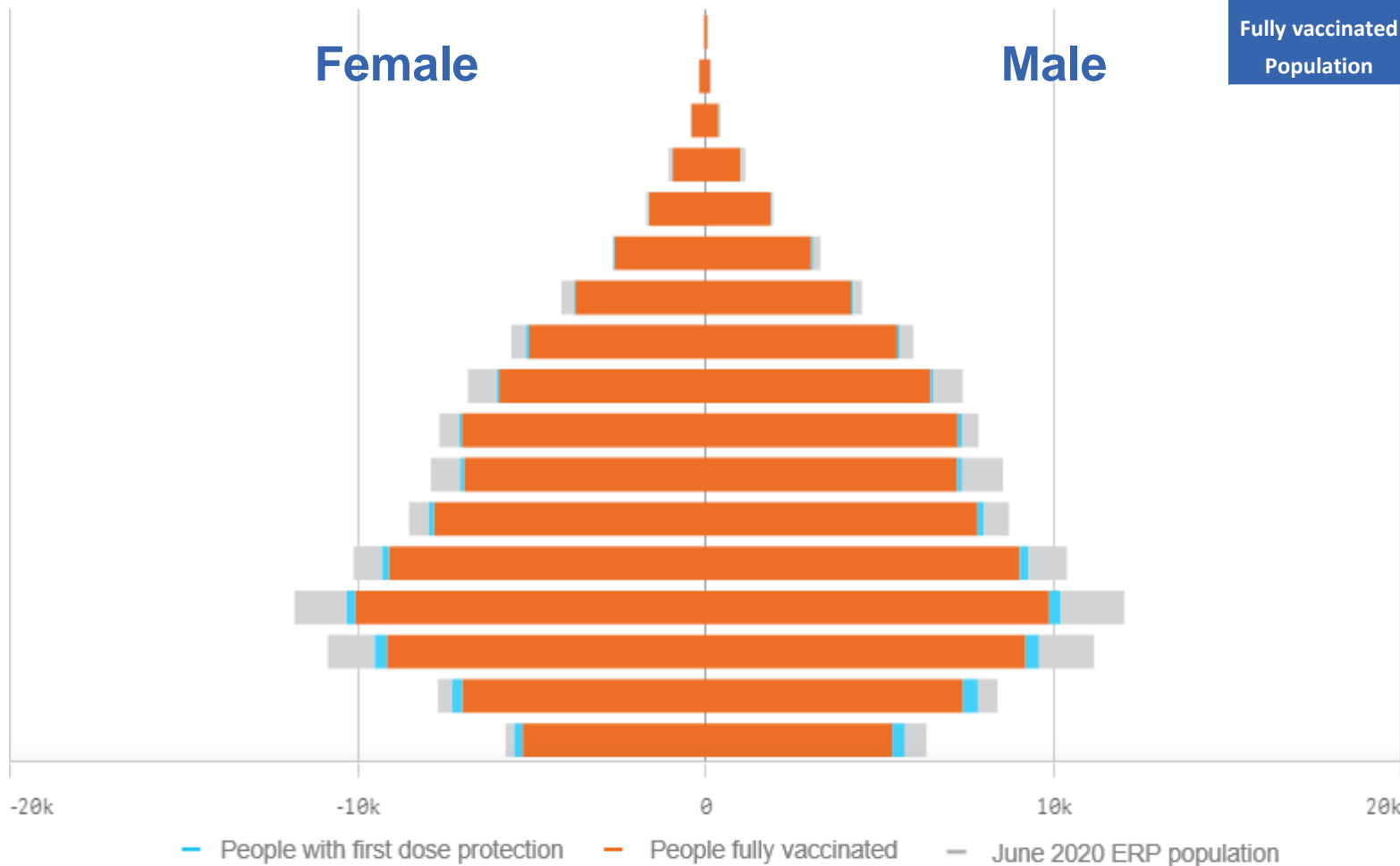


*Administration state breakdown indicates state in which a vaccine was administered and may differ to residential state. Recent weeks may be understated.

Data as at:
07 Jul 2022

Vaccinations by State or Territory of residence

Northern Territory



	16+	50+	70+
At least one dose	91.28% 173,947	93.85% 58,449	>95% 12,531
Fully vaccinated	88.82% 169,268	92.43% 57,563	>95% 12,313
Population	190,571	62,280	12,343

Age	At least one dose	Fully vaccinated
95+	>95%	>95%
90-94	>95%	>95%
85-89	>95%	>95%
80-84	>95%	>95%
75-79	>95%	>95%
70-74	>95%	>95%
65-69	93.20%	91.91%
60-64	93.14%	91.71%
55-59	88.46%	87.29%
50-54	93.58%	92.13%
45-49	87.88%	86.27%
40-44	92.83%	90.84%
35-39	91.07%	88.73%
30-34	86.73%	84.15%
25-29	87.42%	83.95%
20-24	94.18%	89.71%
16-19	92.92%	87.93%

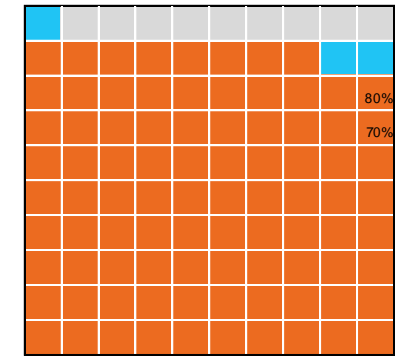
Data as at:
07 Jul 2022

Vaccinations by State – Northern Territory

Past 7 days

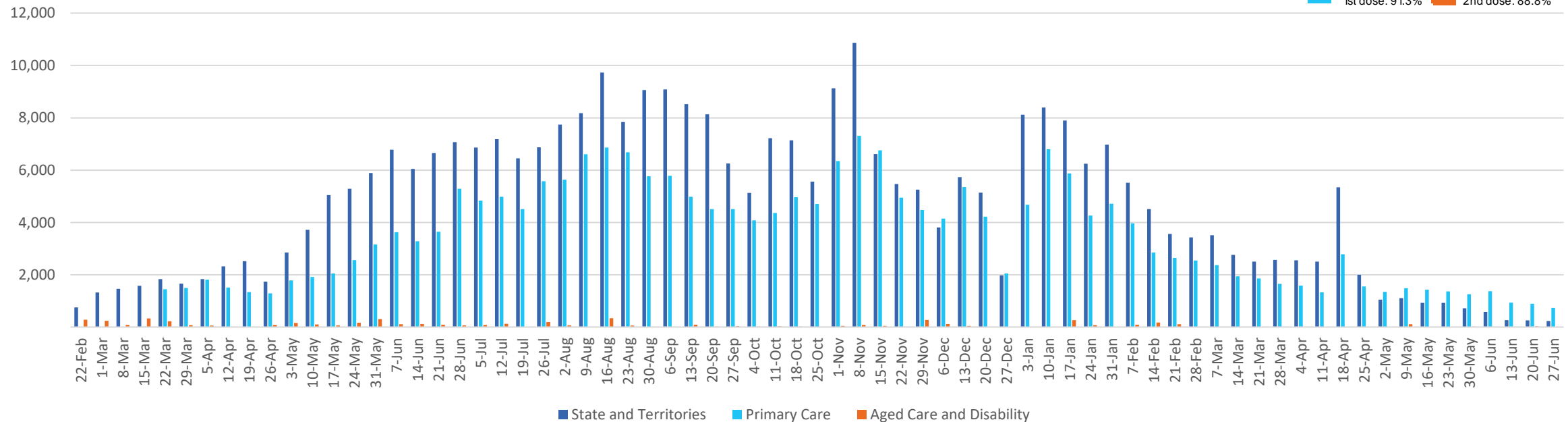
	01/07/2022	02/07/2022	03/07/2022	04/07/2022	05/07/2022	06/07/2022	07/07/2022	7 day total
State and Territory	11	<10	<10	25	17	<10	<10	69
Aged Care and Disability	<10	<10	<10	<10	<10	<10	<10	<10
Primary Care	138	<10	<10	112	269	209	209	946
Total (rounded)	0 K	0 K	0 K	0 K	0 K	0 K	0 K	1 K

Eligible population by % coverage



1st dose: 91.3% 2nd dose: 88.8%

Doses administered by channel



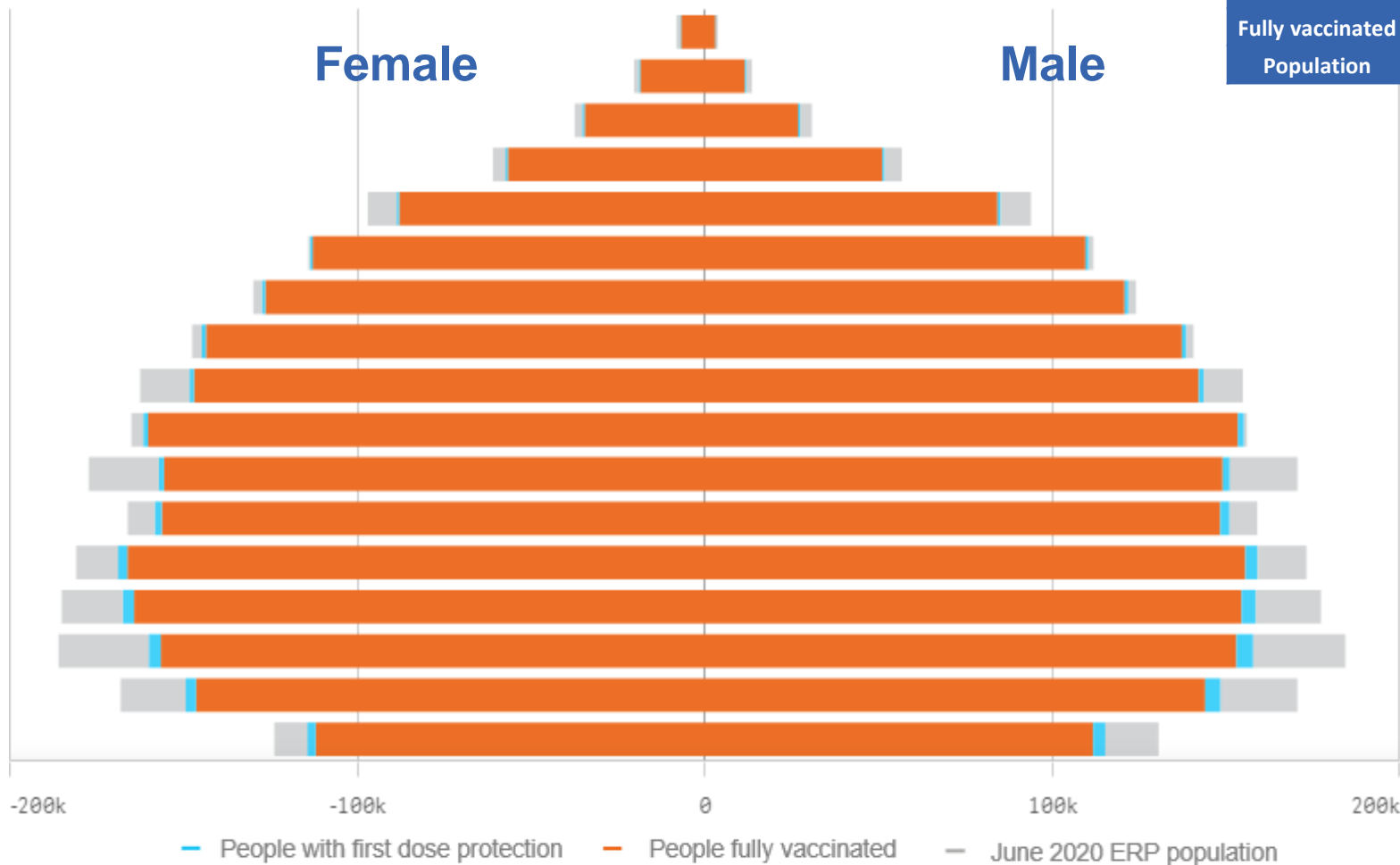
*Administration state breakdown indicates state in which a vaccine was administered and may differ to residential state. Recent weeks may be understated.

Data as at:
07 Jul 2022

Vaccinations by State or Territory of residence

Queensland

	16+	50+	70+
At least one dose	94.28% 3,877,430	>95% 1,754,669	>95% 611,907
Fully vaccinated	92.73% 3,813,618	>95% 1,736,279	>95% 604,450
Population	4,112,707	1,758,855	577,767



Age	At least one dose	Fully vaccinated
95+	>95%	>95%
90-94	>95%	>95%
85-89	>95%	>95%
80-84	>95%	>95%
75-79	>95%	>95%
70-74	>95%	>95%
65-69	>95%	>95%
60-64	>95%	>95%
55-59	92.04%	91.15%
50-54	>95%	>95%
45-49	88.68%	87.62%
40-44	>95%	93.77%
35-39	92.81%	91.00%
30-34	90.32%	88.16%
25-29	86.21%	83.84%
20-24	88.18%	85.88%
16-19	90.31%	87.96%

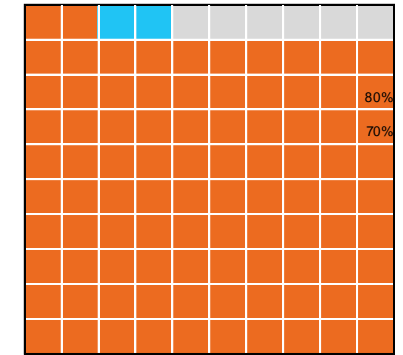
Vaccinations by State – Queensland

Data as at:
07 Jul 2022

Past 7 days

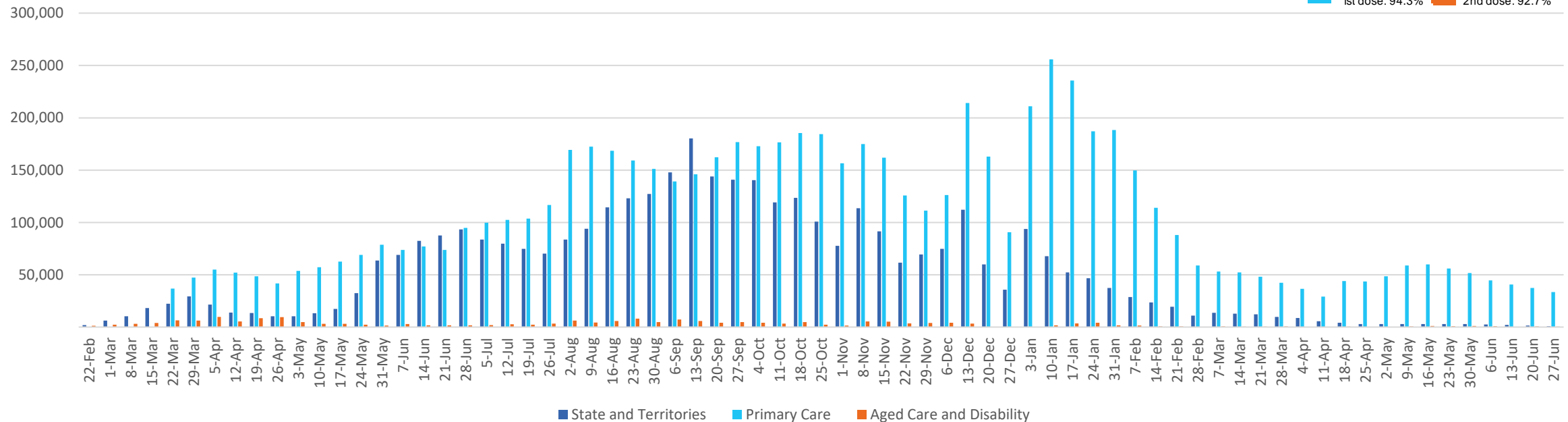
	01/07/2022	02/07/2022	03/07/2022	04/07/2022	05/07/2022	06/07/2022	07/07/2022	7 day total
State and Territory	181	45	30	73	257	238	441	1,265
Aged Care and Disability	76	<10	<10	153	90	140	105	564
Primary Care	6,493	1,348	699	6,512	8,248	8,853	11,660	43,813
Total (rounded)	7 K	1 K	1 K	7 K	9 K	9 K	12 K	46 K

Eligible population by % coverage



1st dose: 94.3% 2nd dose: 92.7%

Doses administered by channel

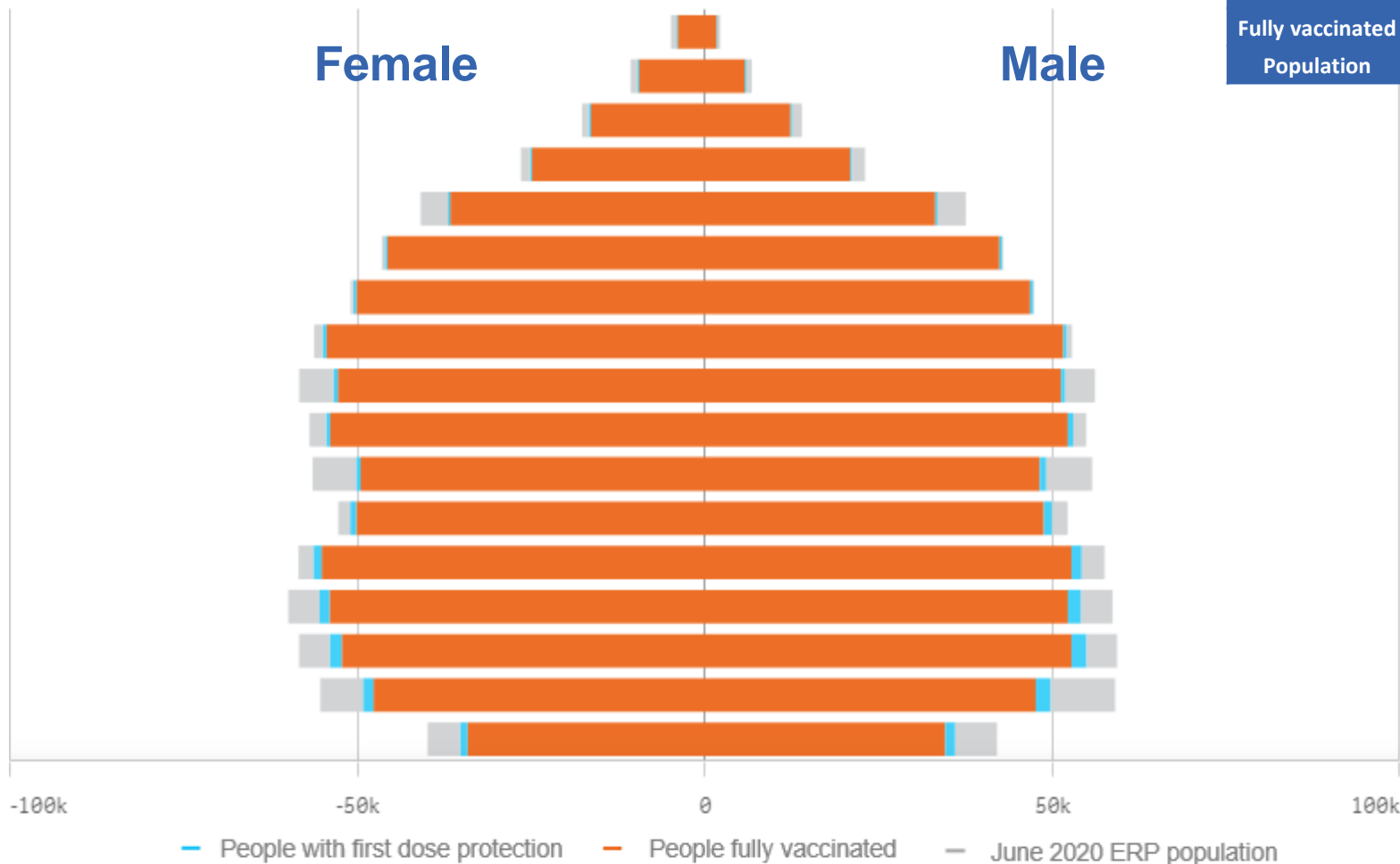


*Administration state breakdown indicates state in which a vaccine was administered and may differ to residential state. Recent weeks may be understated.

Data as at:
07 Jul 2022

Vaccinations by State or Territory of residence

South Australia



	16+		50+		70+	
At least one dose	>95%	1,380,195	>95%	675,893	>95%	257,255
Fully vaccinated	93.79%	1,350,892	>95%	667,539	>95%	253,782
Population	1,440,400		674,384		240,514	

Age	At least one dose	Fully vaccinated
95+	>95%	>95%
90-94	>95%	>95%
85-89	>95%	>95%
80-84	>95%	>95%
75-79	>95%	>95%
70-74	>95%	>95%
65-69	>95%	>95%
60-64	>95%	>95%
55-59	92.08%	90.96%
50-54	>95%	>95%
45-49	88.66%	87.19%
40-44	>95%	94.47%
35-39	>95%	93.33%
30-34	93.21%	90.17%
25-29	93.74%	90.14%
20-24	87.39%	83.94%
16-19	87.13%	84.01%

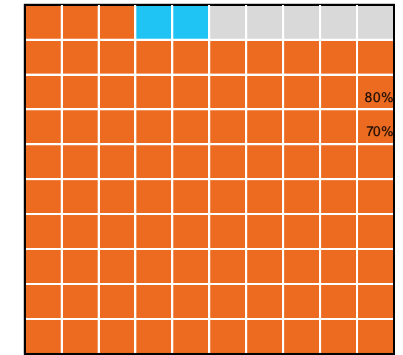
Data as at:
07 Jul 2022

Vaccinations by State – South Australia

Past 7 days

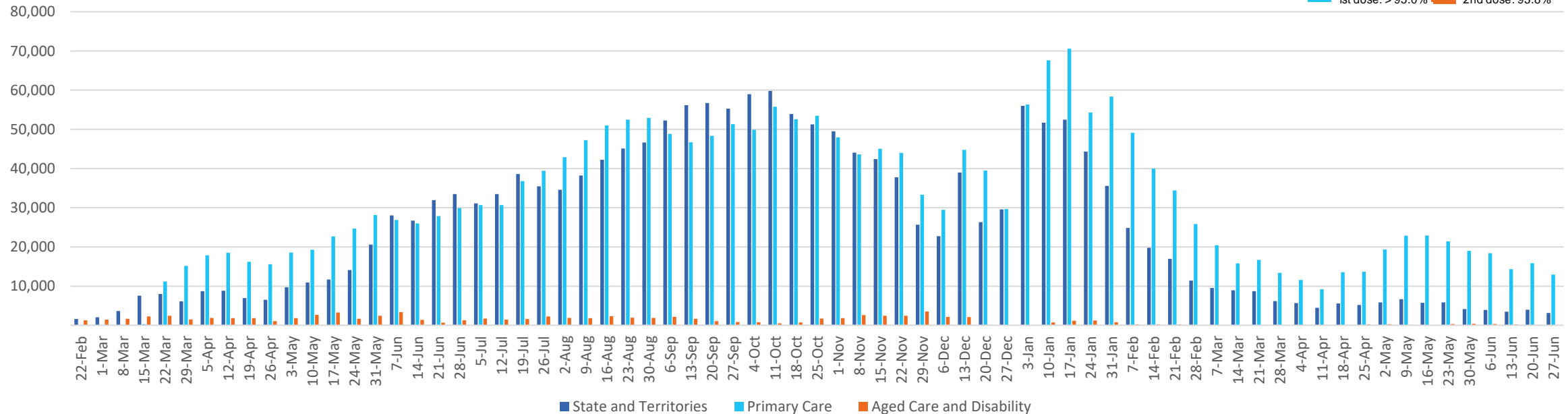
	01/07/2022	02/07/2022	03/07/2022	04/07/2022	05/07/2022	06/07/2022	07/07/2022	7 day total
State and Territory	534	324	151	257	258	609	573	2,706
Aged Care and Disability	<10	<10	<10	<10	<10	13	10	23**
Primary Care	2,372	665	237	2,340	2,670	2,702	3,055	14,041
Total (rounded)	3 K	1 K	0 K	3 K	3 K	3 K	4 K	17 K

Eligible population by % coverage



1st dose: > 95.0% 2nd dose: 93.8%

Doses administered by channel



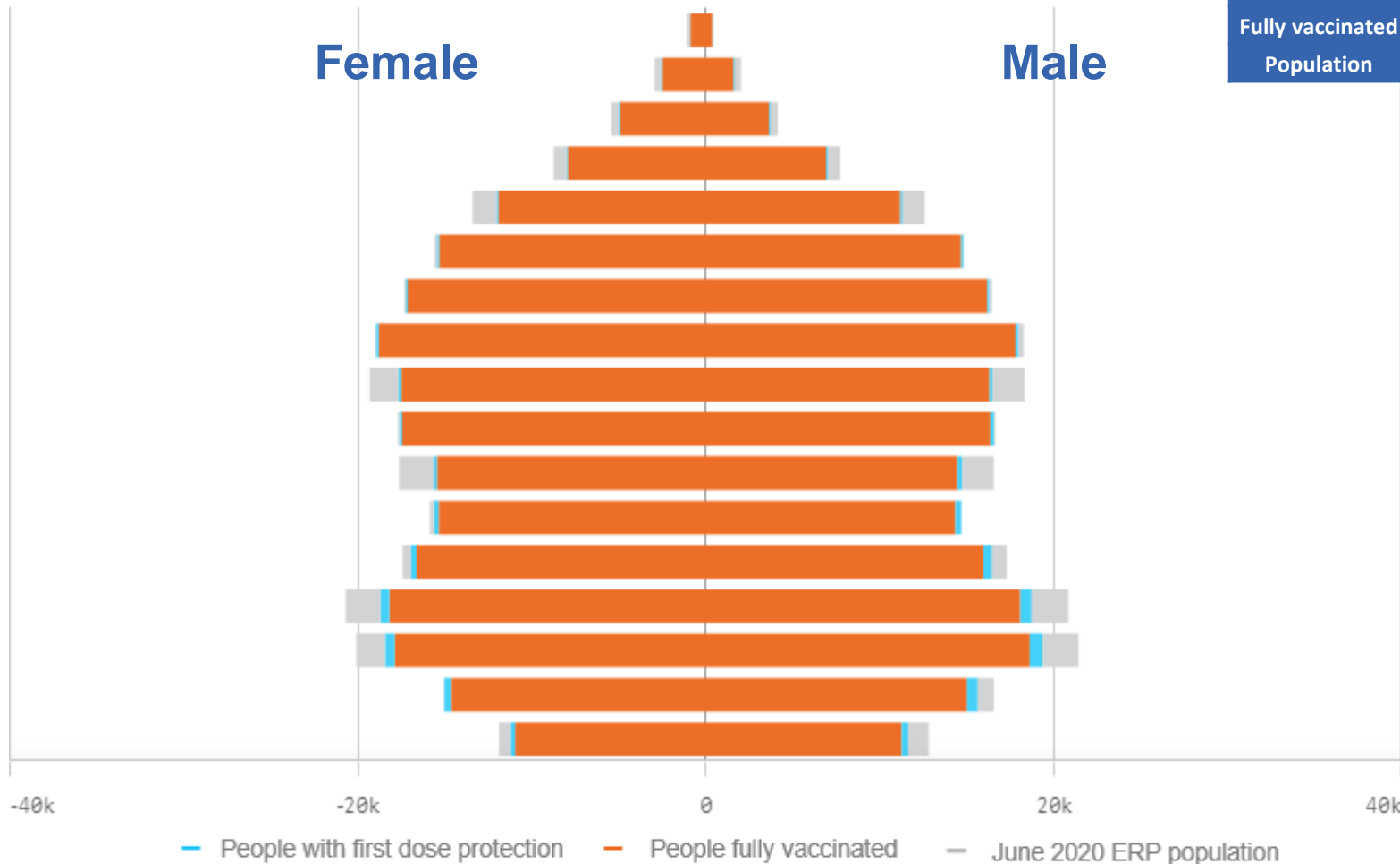
*Administration state breakdown indicates state in which a vaccine was administered and may differ to residential state. Recent weeks may be understated.

**Total appears lower due to historic changes.

Data as at:
07 Jul 2022

Vaccinations by State or Territory of residence

Tasmania



	16+		50+		70+	
At least one dose	>95%	446,276	>95%	222,172	>95%	83,131
Fully vaccinated	>95%	437,279	>95%	219,778	>95%	82,075
Population	440,172		220,036		77,155	

Age	At least one dose	Fully vaccinated
95+	>95%	>95%
90-94	>95%	>95%
85-89	>95%	>95%
80-84	>95%	>95%
75-79	>95%	>95%
70-74	>95%	>95%
65-69	>95%	>95%
60-64	>95%	>95%
55-59	90.84%	89.93%
50-54	>95%	>95%
45-49	89.06%	87.61%
40-44	>95%	>95%
35-39	>95%	>95%
30-34	>95%	>95%
25-29	>95%	>95%
20-24	>95%	93.97%
16-19	92.63%	89.99%

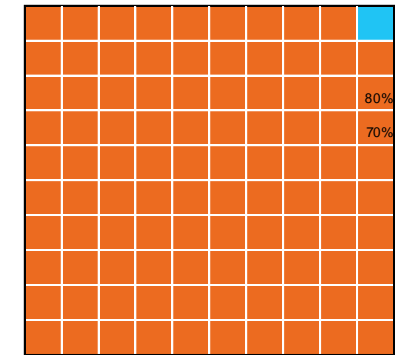
Data as at:
07 Jul 2022

Vaccinations by State – Tasmania

Past 7 days

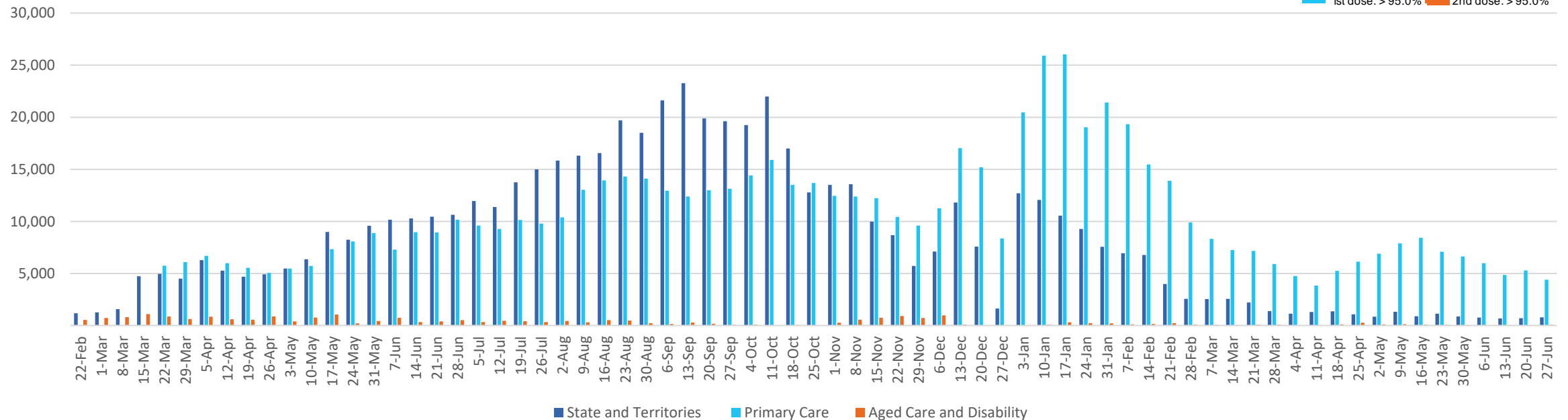
	01/07/2022	02/07/2022	03/07/2022	04/07/2022	05/07/2022	06/07/2022	07/07/2022	7 day total
State and Territory	94	193	191	73	112	138	109	910
Aged Care and Disability	<10	<10	<10	<10	<10	<10	12	21
Primary Care	676	109	42	906	979	1,094	903	4,709
Total (rounded)	1 K	0 K	0 K	1 K	1 K	1 K	1 K	6 K

Eligible population by % coverage



1st dose: > 95.0% 2nd dose: > 95.0%

Doses administered by channel

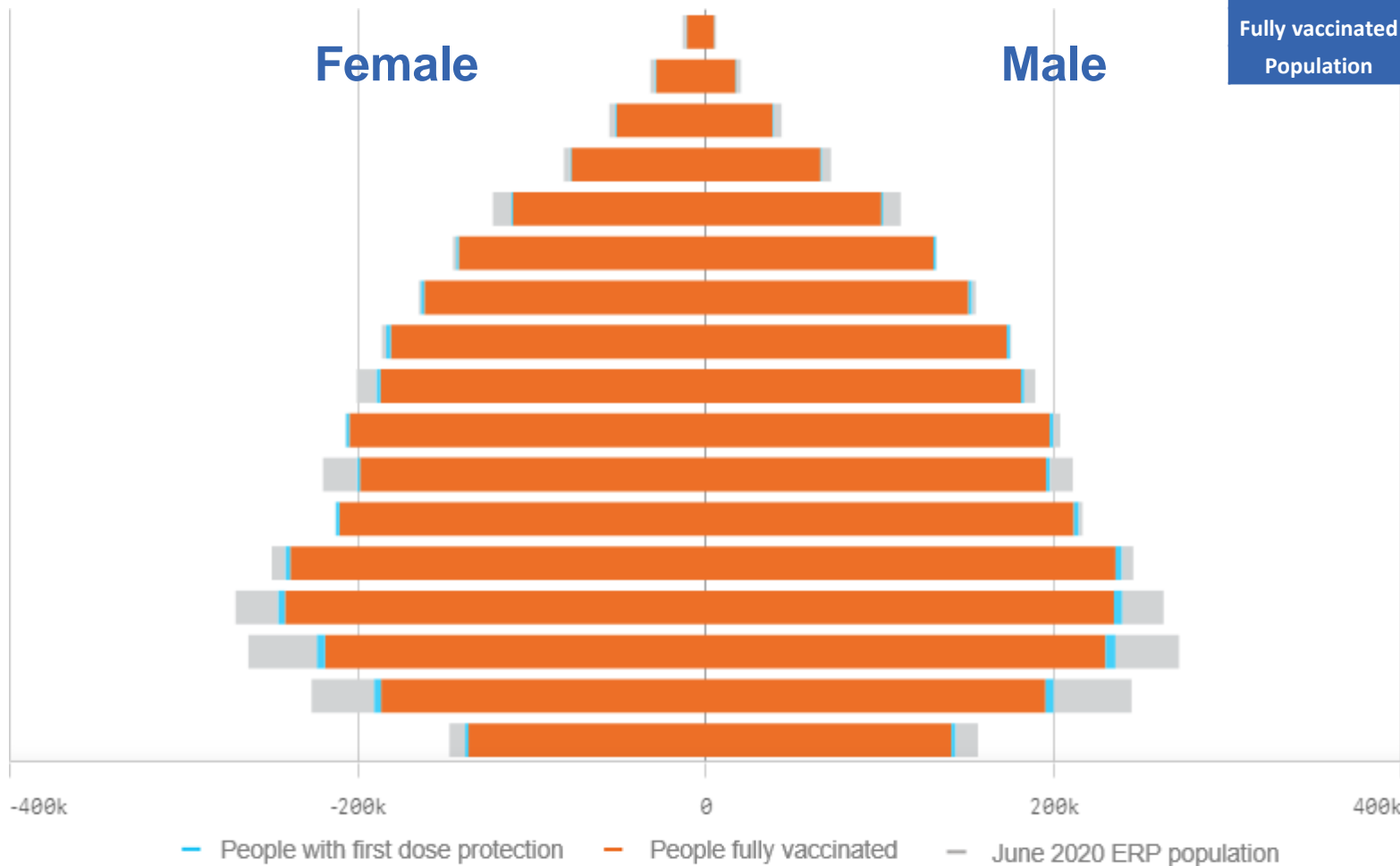


*Administration state breakdown indicates state in which a vaccine was administered and may differ to residential state. Recent weeks may be understated.

Data as at:
07 Jul 2022

Vaccinations by State or Territory of residence

Victoria



	16+		50+		70+	
At least one dose	>95%	5,178,485	>95%	2,247,164	>95%	790,494
Fully vaccinated	94.31%	5,099,654	>95%	2,218,883	>95%	779,788
Population	5,407,574		2,211,211		743,519	

Age	At least one dose	Fully vaccinated
95+	>95%	>95%
90-94	>95%	>95%
85-89	>95%	>95%
80-84	>95%	>95%
75-79	>95%	>95%
70-74	>95%	>95%
65-69	>95%	>95%
60-64	>95%	>95%
55-59	>95%	94.44%
50-54	>95%	>95%
45-49	92.51%	91.56%
40-44	>95%	>95%
35-39	>95%	>95%
30-34	91.23%	89.48%
25-29	86.14%	84.09%
20-24	83.17%	81.18%
16-19	92.91%	91.39%

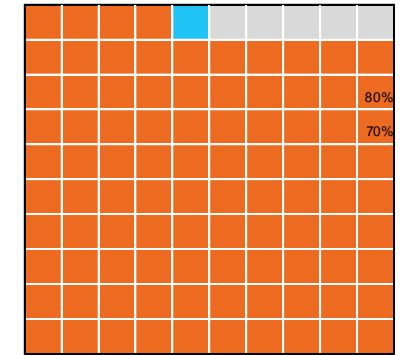
Vaccinations by State – Victoria

Data as at:
07 Jul 2022

Past 7 days

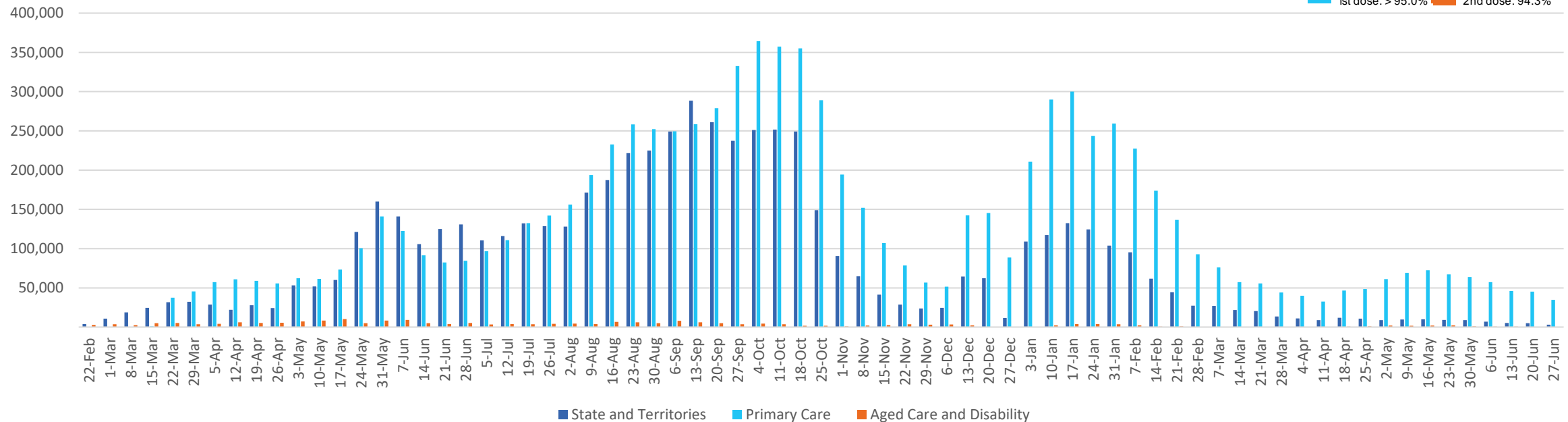
	01/07/2022	02/07/2022	03/07/2022	04/07/2022	05/07/2022	06/07/2022	07/07/2022	7 day total
State and Territory	408	213	<10	353	519	679	628	2,807
Aged Care and Disability	18	28	<10	<10	40	59	110	257
Primary Care	6,478	2,108	717	6,458	7,584	7,759	9,448	40,552
Total (rounded)	7 K	2 K	1 K	7 K	8 K	8 K	10 K	44 K

Eligible population by % coverage



1st dose: > 95.0% 2nd dose: 94.3%

Doses administered by channel

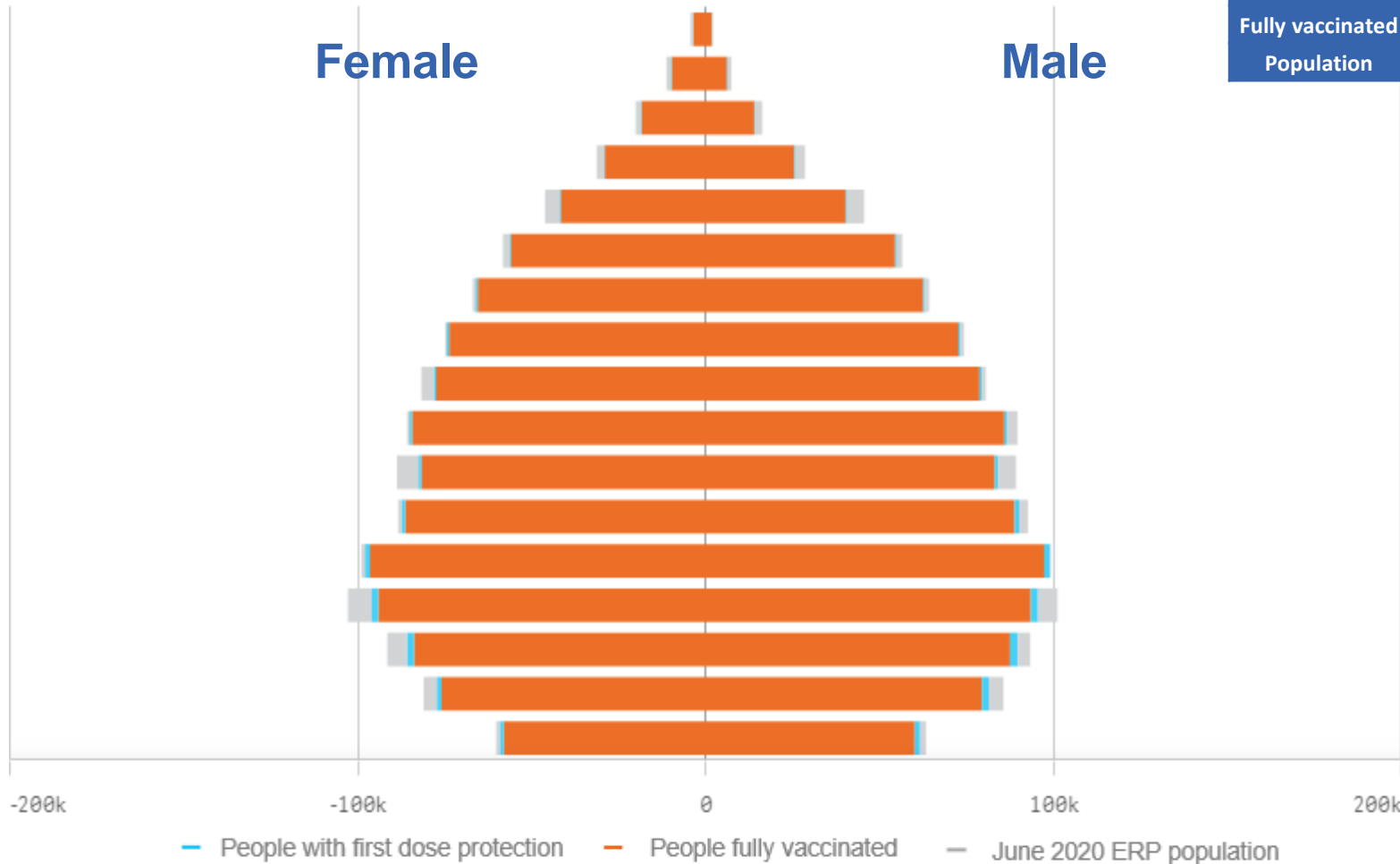


*Administration state breakdown indicates state in which a vaccine was administered and may differ to residential state. Recent weeks may be understated.

Data as at:
07 Jul 2022

Vaccinations by State or Territory of residence

Western Australia



	16+		50+		70+	
At least one dose	>95%	2,102,051	>95%	911,219	>95%	304,338
Fully vaccinated	>95%	2,070,977	>95%	902,308	>95%	300,808
Population	2,114,978		885,370		280,281	

Age	At least one dose	Fully vaccinated
95+	>95%	>95%
90-94	>95%	>95%
85-89	>95%	>95%
80-84	>95%	>95%
75-79	>95%	>95%
70-74	>95%	>95%
65-69	>95%	>95%
60-64	>95%	>95%
55-59	>95%	>95%
50-54	>95%	>95%
45-49	93.67%	92.66%
40-44	>95%	>95%
35-39	>95%	>95%
30-34	94.24%	92.24%
25-29	>95%	93.02%
20-24	>95%	93.42%
16-19	>95%	>95%

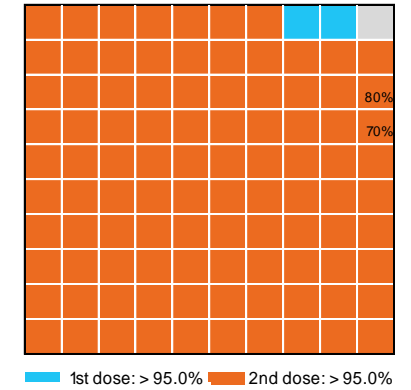
Vaccinations by State – Western Australia

Data as at:
07 Jul 2022

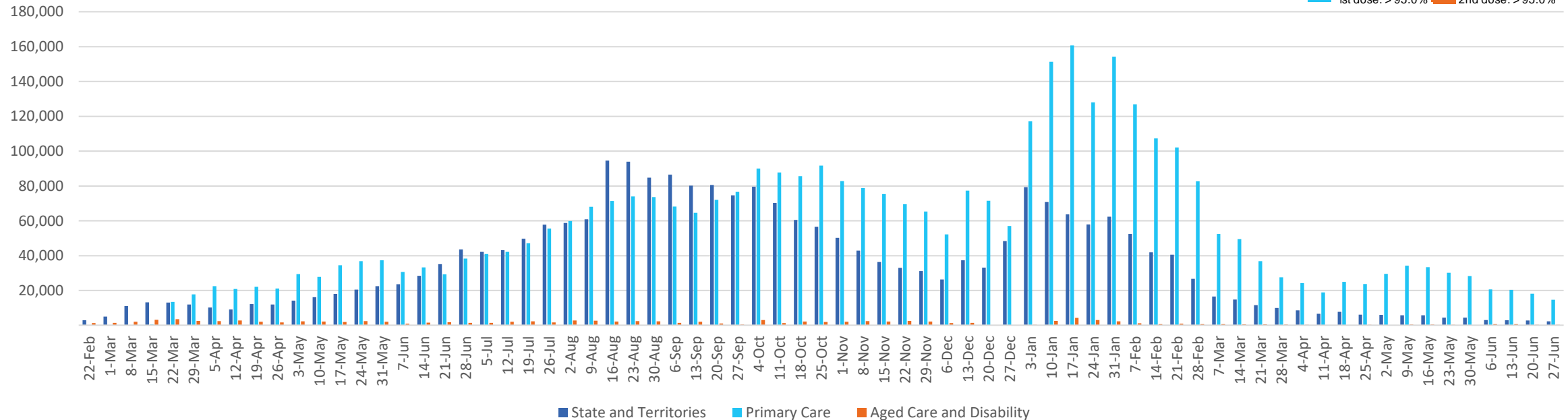
Past 7 days

	01/07/2022	02/07/2022	03/07/2022	04/07/2022	05/07/2022	06/07/2022	07/07/2022	7 day total
State and Territory	367	273	207	486	485	518	633	2,969
Aged Care and Disability	61	<10	11	116	66	29	29	312
Primary Care	2,524	778	243	2,839	2,585	2,895	3,341	15,205
Total (rounded)	3 K	1 K	0 K	3 K	3 K	3 K	4 K	18 K

Eligible population by % coverage



Doses administered by channel



*Administration state breakdown indicates state in which a vaccine was administered and may differ to residential state. Recent weeks may be understated.