



**Australian Government**  
**Operation COVID Shield**

# COVID-19 Vaccine Roll-out Jurisdictional Breakdowns

03 July 2022

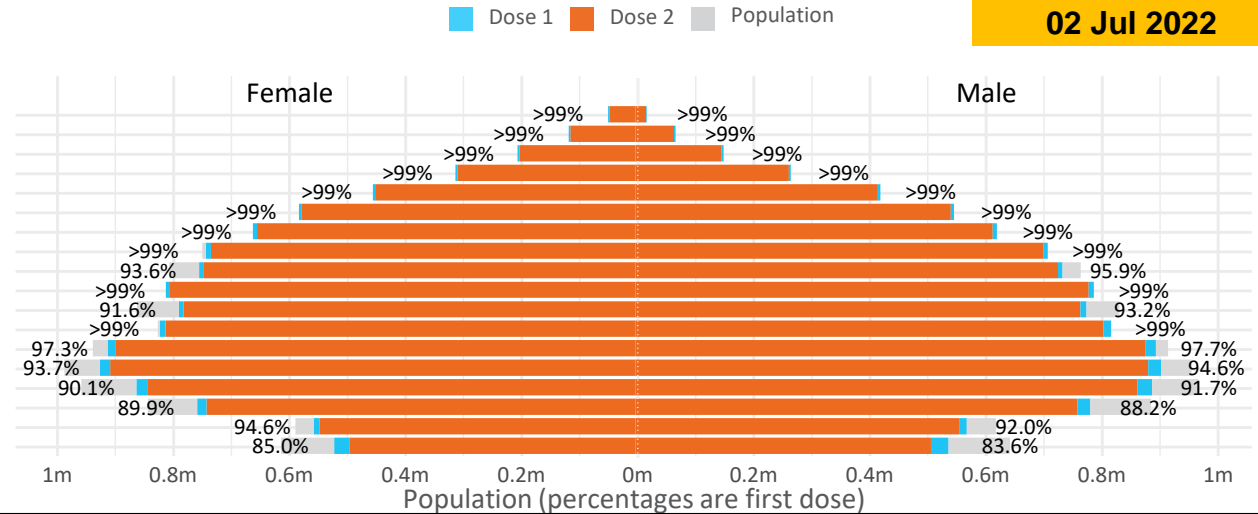
# Doses by age and sex

First and second doses by age and sex

	16+	50+	12-15	5-11
Dose 1	97.55% (20,115,220 doses / 20,619,959 people)	>99% (8,932,266 doses / 8,749,703 people)	84.32% (1,048,876 doses / 1,243,990 people)	52.29% (1,190,443 doses / 2,276,638 people)
Dose 2	95.92% (19,778,568 doses / 20,619,959 people)	>99% (8,824,539 doses / 8,749,703 people)	79.79% (992,533 doses / 1,243,990 people)	39.68% (903,462 doses / 2,276,638 people)

Data as at:  
02 Jul 2022

Age	Dose 1	Dose 2
95+	65,990 (>99%)	62,531 (>99%)
90-94	182,643 (>99%)	177,154 (>99%)
85-89	351,927 (>99%)	345,178 (>99%)
80-84	572,982 (>99%)	565,857 (>99%)
75-79	866,855 (>99%)	858,398 (>99%)
70-74	1,119,647 (>99%)	1,108,254 (>99%)
65-69	1,271,913 (>99%)	1,257,033 (>99%)
60-64	1,438,876 (>99%)	1,422,349 (>99%)
55-59	1,475,673 (94.9%)	1,458,977 (93.8%)
50-54	1,585,760 (>99%)	1,568,808 (>99%)
45-49	1,550,470 (92.5%)	1,532,085 (91.4%)
40-44	1,626,871 (>99%)	1,602,881 (98.9%)
35-39	1,794,501 (97.8%)	1,762,260 (96.0%)
30-34	1,820,085 (94.6%)	1,778,025 (92.4%)
25-29	1,743,876 (91.5%)	1,695,979 (89.0%)
20-24	1,531,377 (89.4%)	1,491,046 (87.1%)
16-19	1,115,774 (93.3%)	1,091,753 (91.3%)
12-15	1,048,876 (84.3%)	992,533 (79.8%)



	AUS	ACT	NSW	NT	QLD	SA	TAS	VIC	WA
16 and over - dose 1	20,115,220	353,597	6,343,636	173,915	3,875,278	1,379,519	446,172	5,176,195	2,100,978
16 and over - dose 2	19,778,568	347,846	6,245,420	169,238	3,811,509	1,350,222	437,162	5,097,586	2,069,955
16 and over - population	20,619,959*	344,037	6,565,651	190,571	4,112,707	1,440,400	440,172	5,407,574	2,114,978
16 and over % with dose 1	97.55%	>99%	96.62%	91.26%	94.23%	95.77%	>99%	95.72%	>99%
16 and over % with dose 2	95.92%	>99%	95.12%	88.81%	92.68%	93.74%	>99%	94.27%	97.87%
5 to 11 - dose 1	1,190,443	31,720	355,498	13,136	206,194	83,599	28,439	324,234	140,038
5 to 11 - dose 2	903,462	27,372	276,078	8,805	150,407	63,803	23,186	246,691	102,507
5 to 11 - population	2,276,638	39,789	716,460	24,750	478,731	148,816	45,033	578,499	244,154
5 to 11 % with dose 1	52.29%	79.72%	49.62%	53.07%	43.07%	56.18%	63.15%	56.05%	57.36%
5 to 11 % with dose 2	39.68%	68.79%	38.53%	35.58%	31.42%	42.87%	51.49%	42.64%	41.98%
12 to 15 - dose 1	1,048,876	20,144	322,491	10,738	205,514	68,203	22,847	274,074	115,497
12 to 15 - dose 2	992,533	19,582	308,002	9,691	191,866	64,434	21,730	262,204	106,883
12 to 15 - population	1,243,990	19,693	390,330	13,060	270,146	82,747	26,308	308,611	132,869
12 to 15 % with dose 1	84.32%	>99%	82.62%	82.22%	76.08%	82.42%	86.84%	88.81%	86.93%
12 to 15 % with dose 2	79.79%	>99%	78.91%	74.20%	71.02%	77.87%	82.60%	84.96%	80.44%

\*National population will not equal sum of listed jurisdictions due to a small number of people counted in national population residing in some 'other' territories. Sum of state doses will not add to national total as some records are unable to be geocoded to a State or Territory. Doses sourced from Australian Immunisation Register, population from ABS ERP June 2020

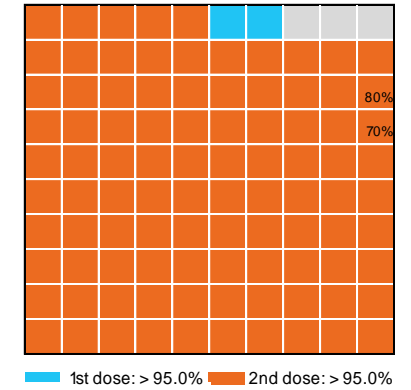
# Vaccinations by State – National Summary

Data as at:  
02 Jul 2022

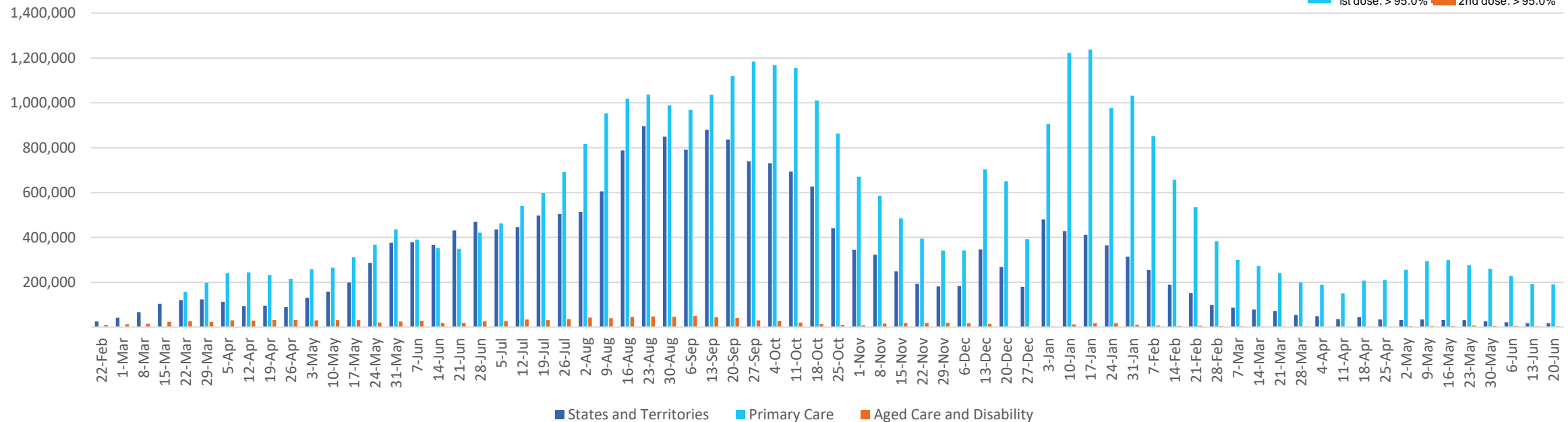
Past 7 days

	26/06/2022	27/06/2022	28/06/2022	29/06/2022	30/06/2022	01/07/2022	02/07/2022	7 day total
State and Territory	1,685	3,014	3,277	4,209	3,083	2,091	1,184	18,543
Aged Care and Disability	<10	688	452	377	611	345	37	2,511
Primary Care	3,605	30,560	35,363	32,468	33,337	28,817	8,142	172,292
Total (rounded)	5 K	34 K	39 K	37 K	37 K	31 K	9 K	193 K

Eligible population by % coverage



## Doses administered by channel

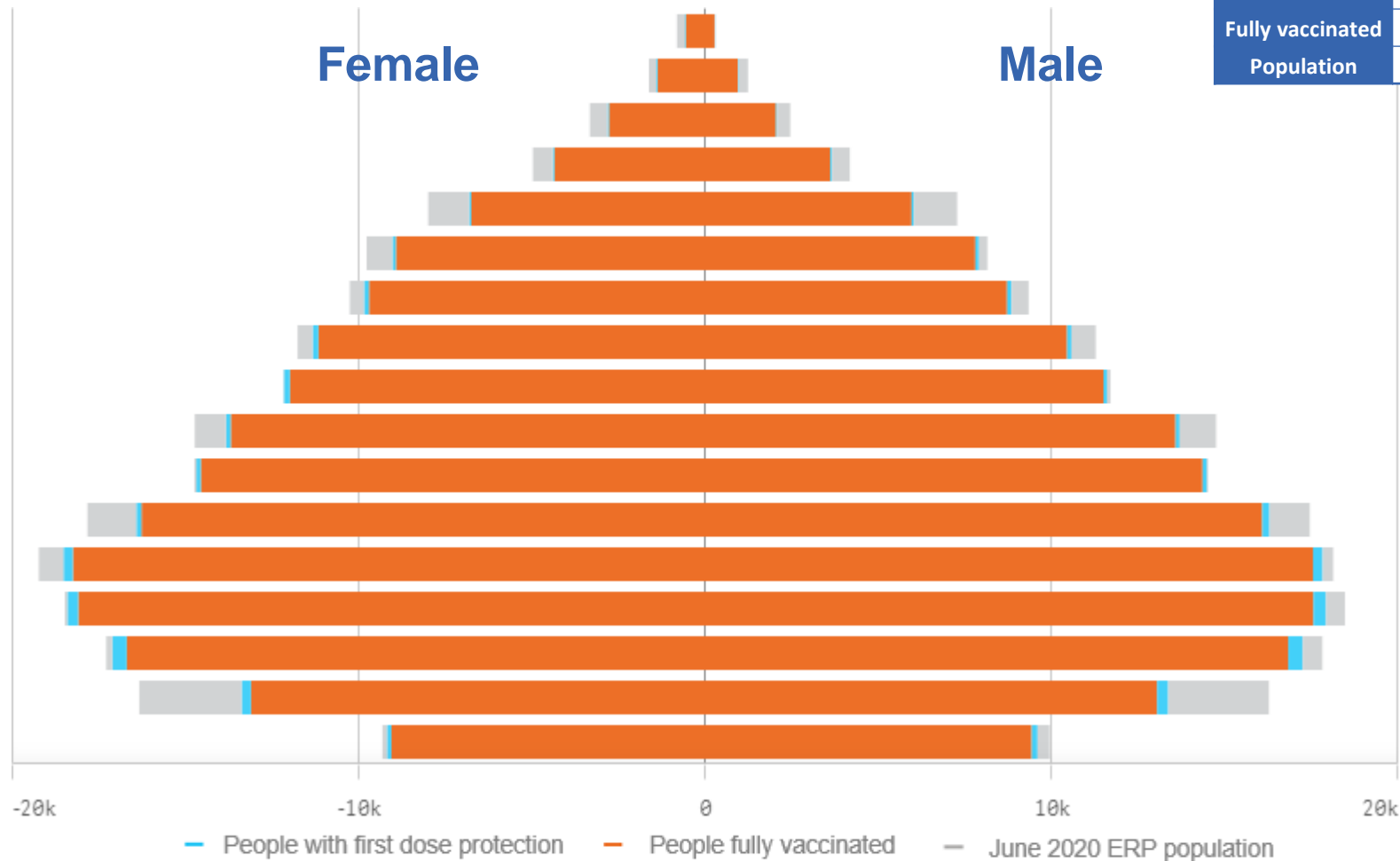


\*Administration state breakdown indicates state in which a vaccine was administered and may differ to residential state. Recent weeks may be understated.

Data as at:  
02 Jul 2022

# Vaccinations by State or Territory of residence

## Australian Capital Territory



	16+	50+	70+
At least one dose	>95% 353,597	>95% 138,241	>95% 46,129
Fully vaccinated	>95% 347,846	>95% 136,387	>95% 45,463
Population	344,037	127,802	39,946

Age	At least one dose	Fully vaccinated
95+	>95%	>95%
90-94	>95%	>95%
85-89	>95%	>95%
80-84	>95%	>95%
75-79	>95%	>95%
70-74	>95%	>95%
65-69	>95%	>95%
60-64	>95%	>95%
55-59	>95%	>95%
50-54	>95%	>95%
45-49	>95%	>95%
40-44	>95%	>95%
35-39	>95%	>95%
30-34	>95%	>95%
25-29	>95%	>95%
20-24	82.57%	80.52%
16-19	>95%	>95%

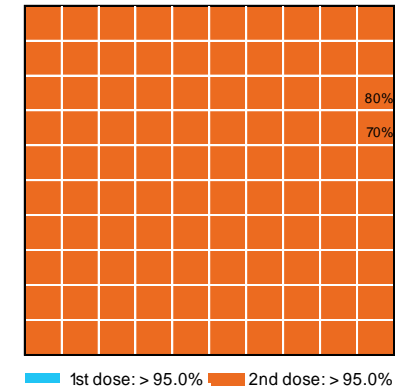
# Vaccinations by State – Australian Capital Territory

Data as at:  
02 Jul 2022

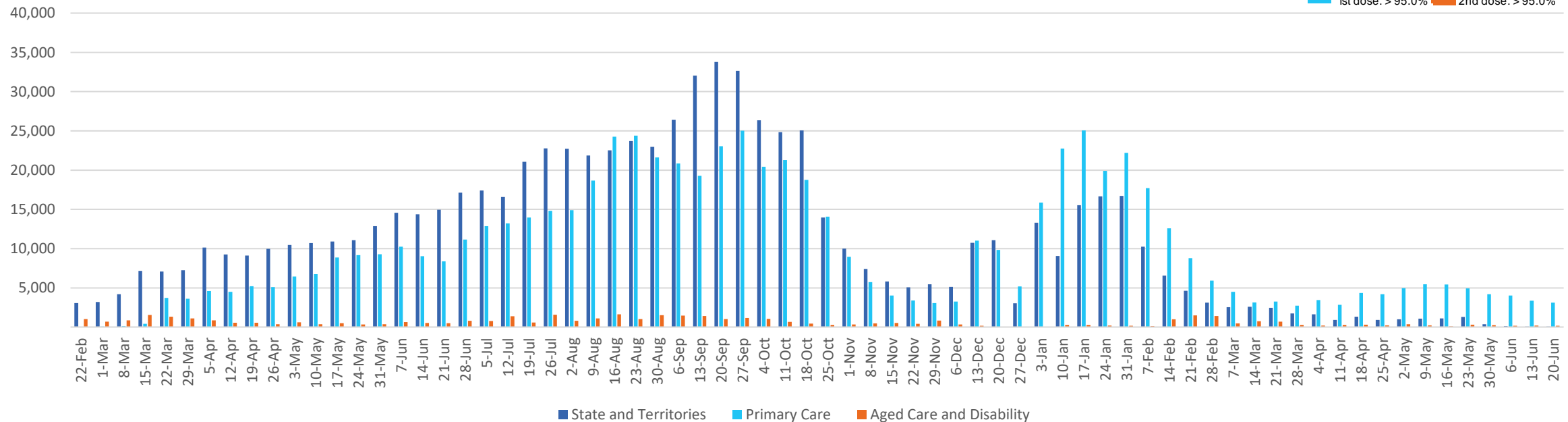
Past 7 days

	26/06/2022	27/06/2022	28/06/2022	29/06/2022	30/06/2022	01/07/2022	02/07/2022	7 day total
State and Territory	55	545	559	541	512	493	129	2,834
Aged Care and Disability	<10	<10	11	<10	45	73	<10	140
Primary Care	45	587	629	545	608	553	250	3,217
Total (rounded)	0 K	1 K	1 K	1 K	1 K	1 K	0 K	6 K

Eligible population by % coverage



## Doses administered by channel



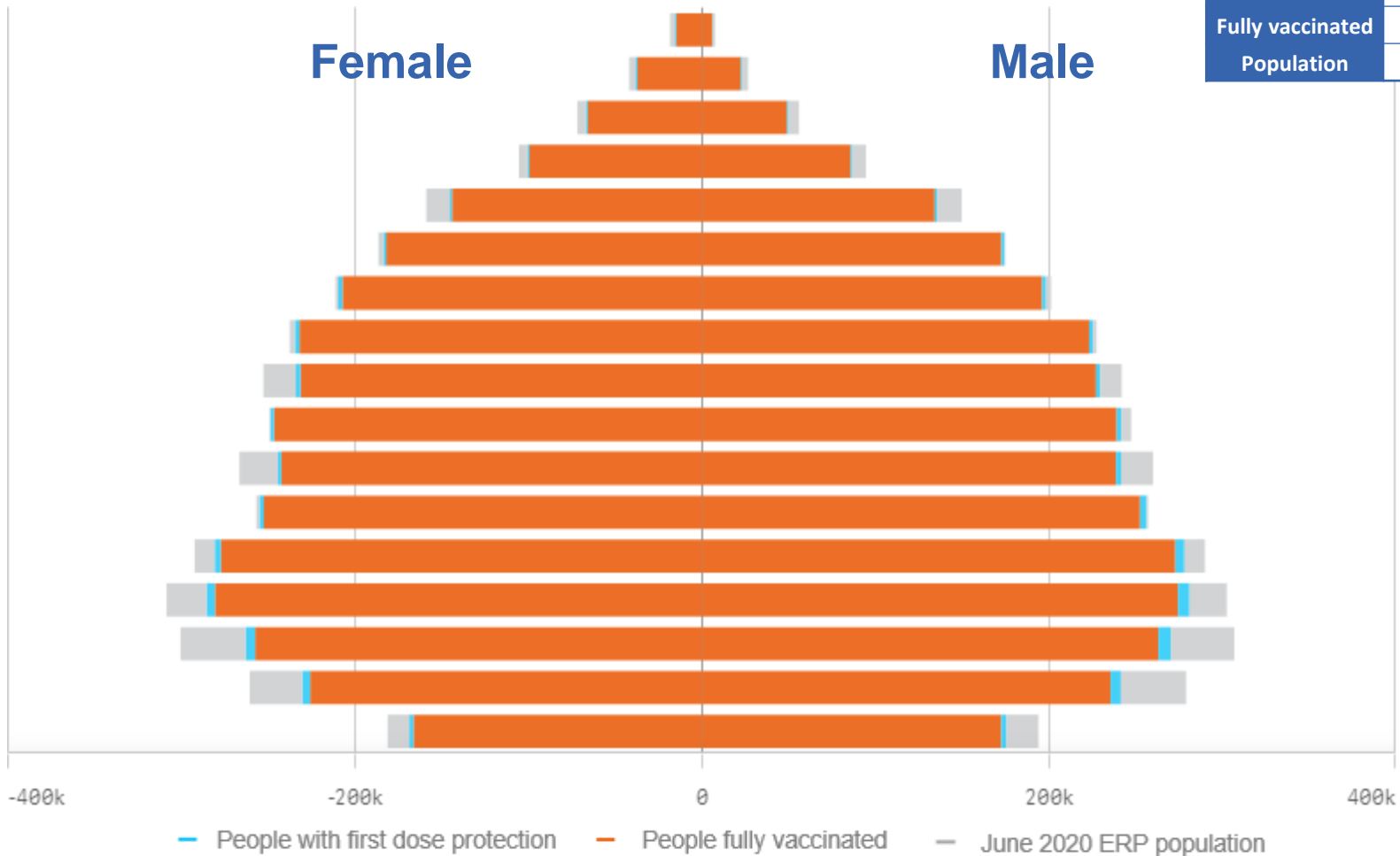
\*Administration state breakdown indicates state in which a vaccine was administered and may differ to residential state. Recent weeks may be understated.

Data as at:  
02 Jul 2022

# Vaccinations by State or Territory of residence

## New South Wales

	16+	50+	70+
At least one dose	>95% 6,343,636	>95% 2,855,494	>95% 1,028,700
Fully vaccinated	>95% 6,245,420	>95% 2,821,496	>95% 1,015,320
Population	6,565,651	2,807,793	962,606



Age	At least one dose	Fully vaccinated
95+	>95%	>95%
90-94	>95%	>95%
85-89	>95%	>95%
80-84	>95%	>95%
75-79	>95%	>95%
70-74	>95%	>95%
65-69	>95%	>95%
60-64	>95%	>95%
55-59	93.85%	92.78%
50-54	>95%	>95%
45-49	92.43%	91.44%
40-44	>95%	>95%
35-39	>95%	94.72%
30-34	93.21%	91.20%
25-29	88.39%	86.11%
20-24	87.81%	85.72%
16-19	91.85%	90.36%

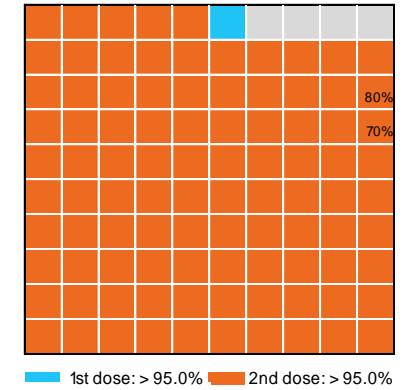
# Vaccinations by State – New South Wales

Data as at:  
02 Jul 2022

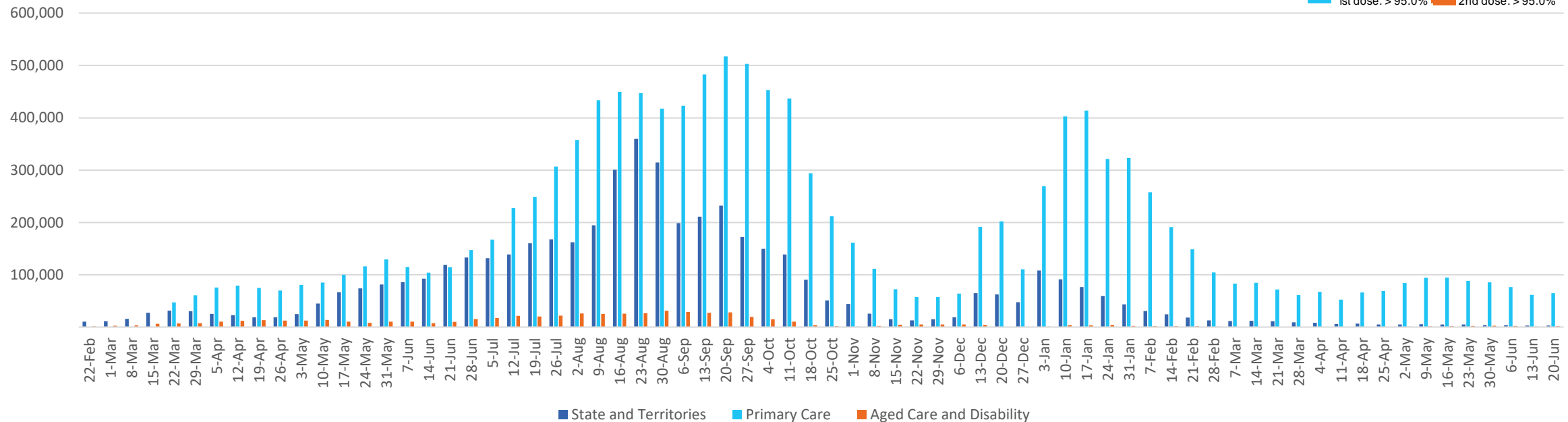
Past 7 days

	26/06/2022	27/06/2022	28/06/2022	29/06/2022	30/06/2022	01/07/2022	02/07/2022	7 day total
State and Territory	775	503	150	857	143	<10	<10	2,438
Aged Care and Disability	<10	398	115	157	140	118	<10	928
Primary Care	1,134	10,818	12,304	11,337	11,210	9,583	2,875	59,261
Total (rounded)	2 K	12 K	13 K	12 K	11 K	10 K	3 K	63 K

Eligible population by % coverage



## Doses administered by channel

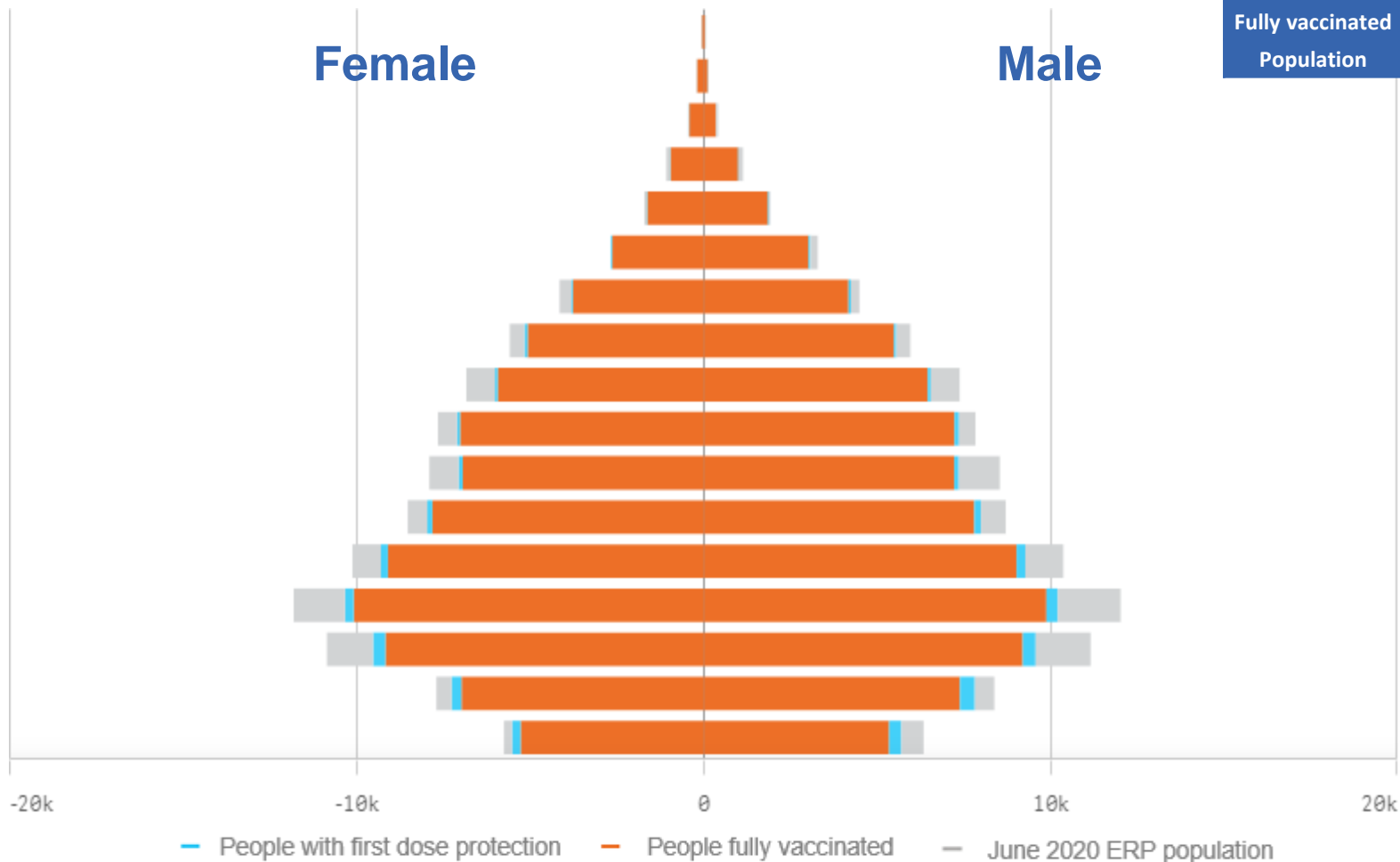


\*Administration state breakdown indicates state in which a vaccine was administered and may differ to residential state. Recent weeks may be understated.

Data as at:  
02 Jul 2022

# Vaccinations by State or Territory of residence

## Northern Territory



	16+		50+		70+	
At least one dose	91.26%	173,915	93.79%	58,415	>95%	12,513
Fully vaccinated	88.81%	169,238	92.37%	57,530	>95%	12,297
Population		190,571		62,280		12,343

Age	At least one dose	Fully vaccinated
95+	>95%	>95%
90-94	>95%	>95%
85-89	>95%	>95%
80-84	>95%	>95%
75-79	>95%	>95%
70-74	>95%	>95%
65-69	93.26%	91.98%
60-64	93.01%	91.59%
55-59	88.43%	87.25%
50-54	93.56%	92.10%
45-49	87.87%	86.26%
40-44	92.89%	90.86%
35-39	90.98%	88.68%
30-34	86.82%	84.25%
25-29	87.46%	84.01%
20-24	94.08%	89.58%
16-19	92.89%	87.89%



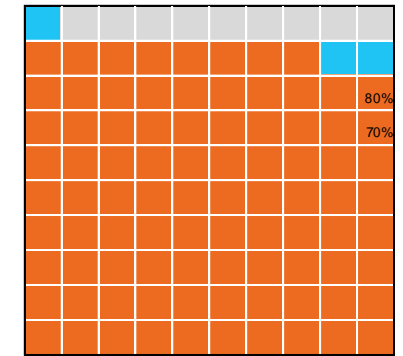
# Vaccinations by State – Northern Territory

Data as at:  
02 Jul 2022

Past 7 days

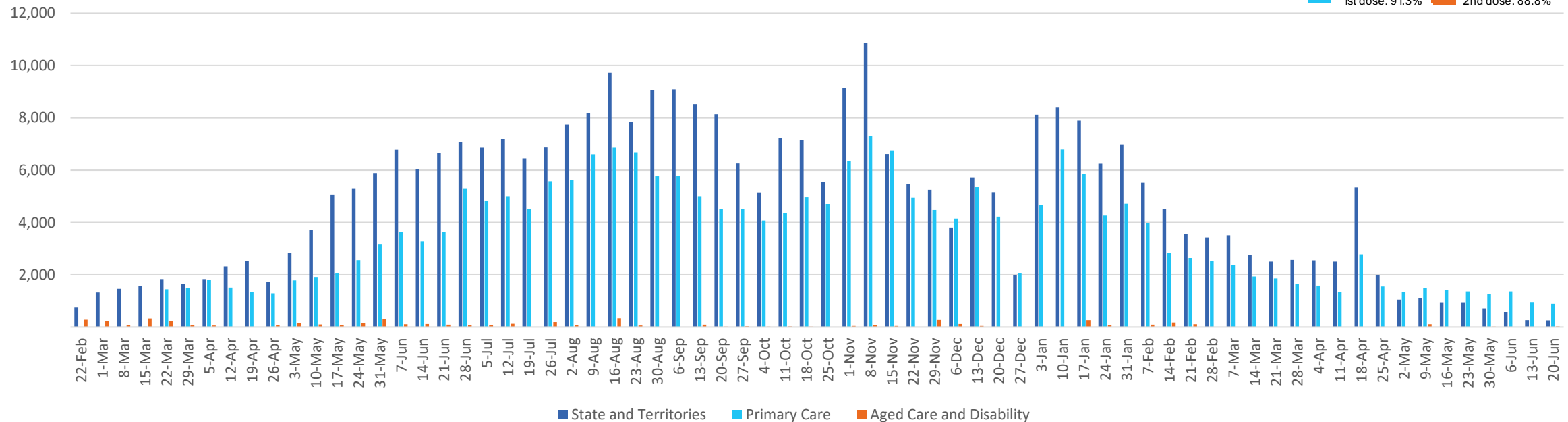
	26/06/2022	27/06/2022	28/06/2022	29/06/2022	30/06/2022	01/07/2022	02/07/2022	7 day total
State and Territory	<10	62	57	71	60	11	<10	267
Aged Care and Disability	<10	<10	<10	<10	<10	<10	<10	<10
Primary Care	<10	124	213	199	162	138	<10	852
Total (rounded)	0 K	0 K	0 K	0 K	0 K	0 K	0 K	1 K

Eligible population by % coverage



1st dose: 91.3% 2nd dose: 88.8%

## Doses administered by channel

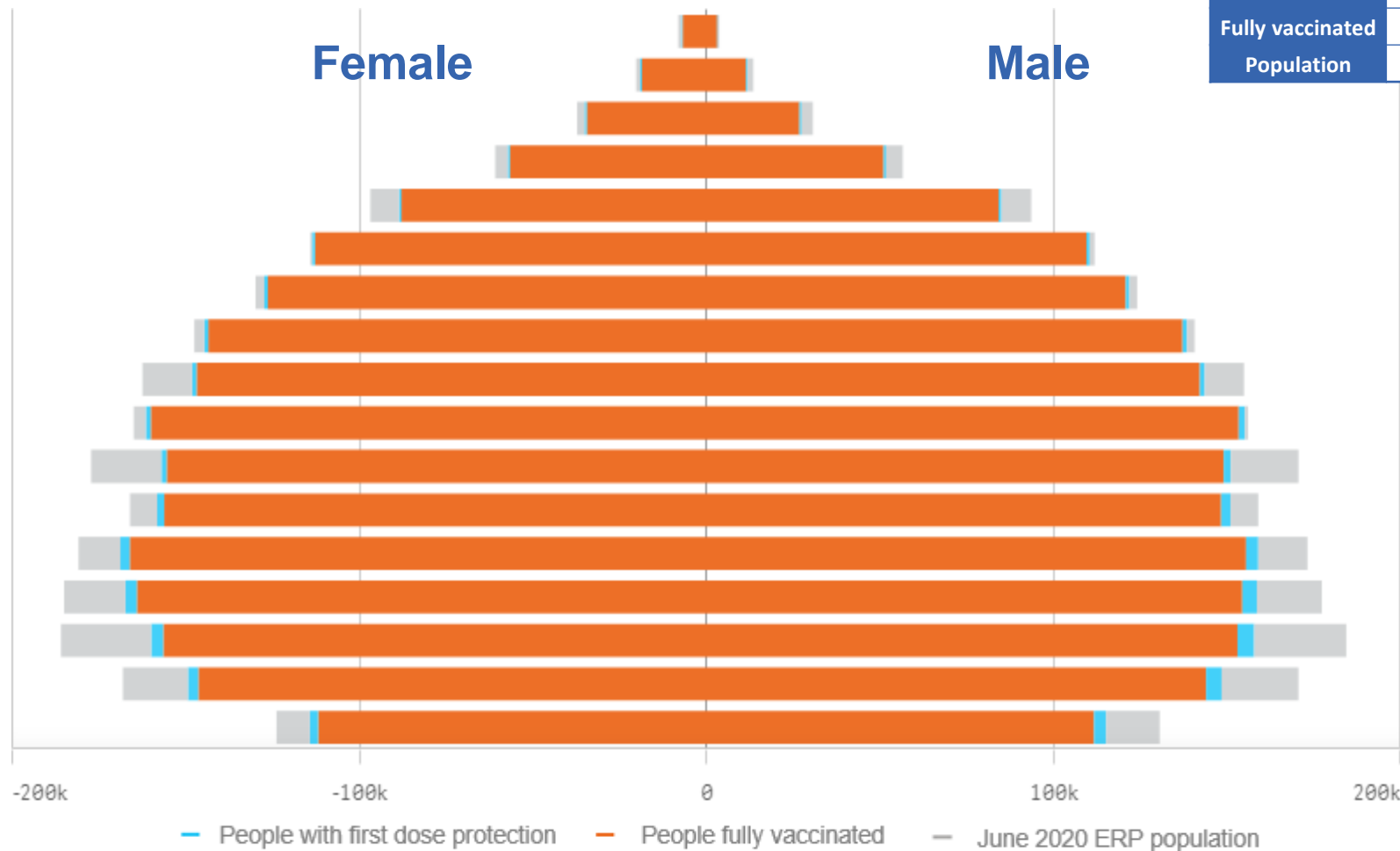


\*Administration state breakdown indicates state in which a vaccine was administered and may differ to residential state. Recent weeks may be understated.

Data as at:  
02 Jul 2022

# Vaccinations by State or Territory of residence

## Queensland



	16+	50+	70+
At least one dose	94.23% 3,875,278	>95% 1,753,315	>95% 611,091
Fully vaccinated	92.68% 3,811,509	>95% 1,734,983	>95% 603,668
Population	4,112,707	1,758,855	577,767

Age	At least one dose	Fully vaccinated
95+	>95%	>95%
90-94	>95%	>95%
85-89	>95%	>95%
80-84	>95%	>95%
75-79	>95%	>95%
70-74	>95%	>95%
65-69	>95%	>95%
60-64	>95%	>95%
55-59	92.01%	91.12%
50-54	>95%	>95%
45-49	88.65%	87.59%
40-44	>95%	93.74%
35-39	92.77%	90.96%
30-34	90.27%	88.11%
25-29	86.20%	83.83%
20-24	88.17%	85.87%
16-19	90.23%	87.89%

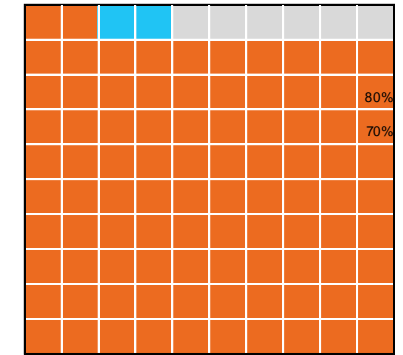
# Vaccinations by State – Queensland

Data as at:  
02 Jul 2022

Past 7 days

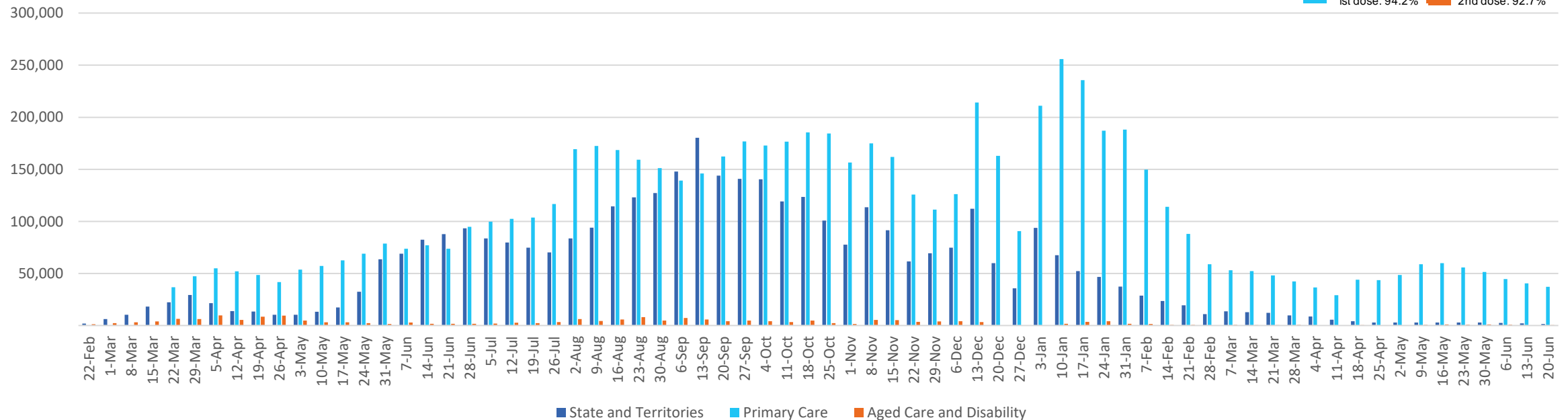
	26/06/2022	27/06/2022	28/06/2022	29/06/2022	30/06/2022	01/07/2022	02/07/2022	7 day total
State and Territory	17	196	449	340	229	181	45	1,457
Aged Care and Disability	<10	206	93	76	247	76	<10	698
Primary Care	607	5,721	7,837	6,507	7,563	6,493	1,348	36,076
Total (rounded)	1 K	6 K	8 K	7 K	8 K	7 K	1 K	38 K

Eligible population by % coverage



1st dose: 94.2% 2nd dose: 92.7%

## Doses administered by channel

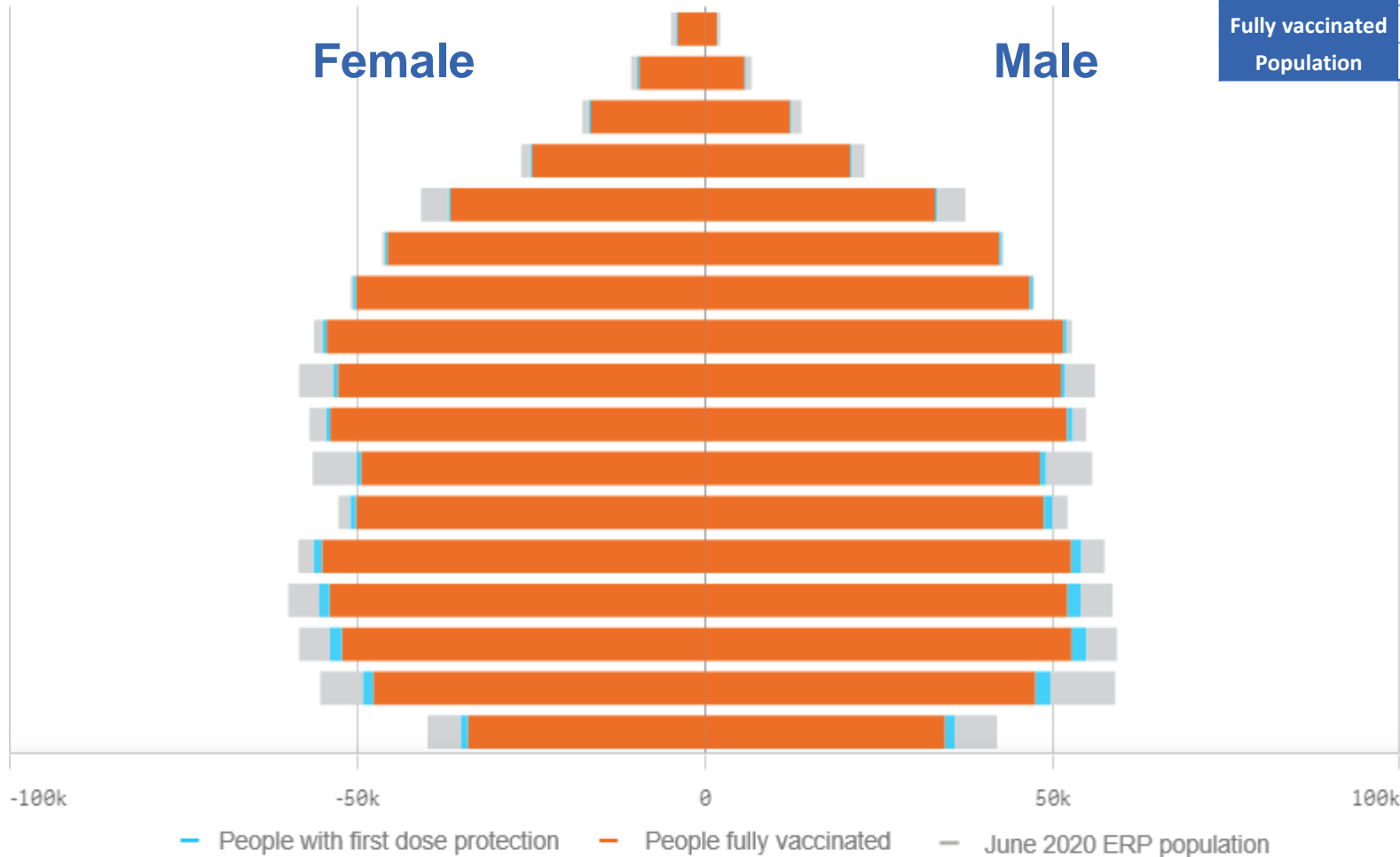


\*Administration state breakdown indicates state in which a vaccine was administered and may differ to residential state. Recent weeks may be understated.

Data as at:  
02 Jul 2022

# Vaccinations by State or Territory of residence

## South Australia



	16+		50+		70+	
At least one dose	>95%	1,379,519	>95%	675,430	>95%	256,960
Fully vaccinated	93.74%	1,350,222	>95%	667,063	>95%	253,492
Population	1,440,400		674,384		240,514	

Age	At least one dose	Fully vaccinated
95+	>95%	>95%
90-94	>95%	>95%
85-89	>95%	>95%
80-84	>95%	>95%
75-79	>95%	>95%
70-74	>95%	>95%
65-69	>95%	>95%
60-64	>95%	>95%
55-59	92.08%	90.96%
50-54	>95%	94.93%
45-49	88.65%	87.18%
40-44	>95%	94.48%
35-39	>95%	93.27%
30-34	93.19%	90.15%
25-29	93.69%	90.12%
20-24	87.43%	83.97%
16-19	87.00%	83.90%

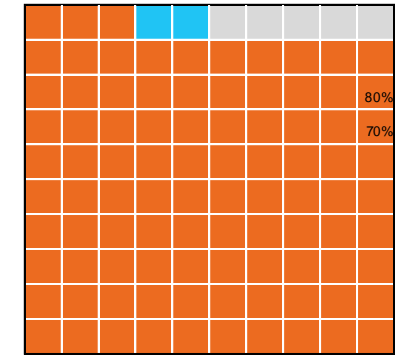
# Vaccinations by State – South Australia

Data as at:  
02 Jul 2022

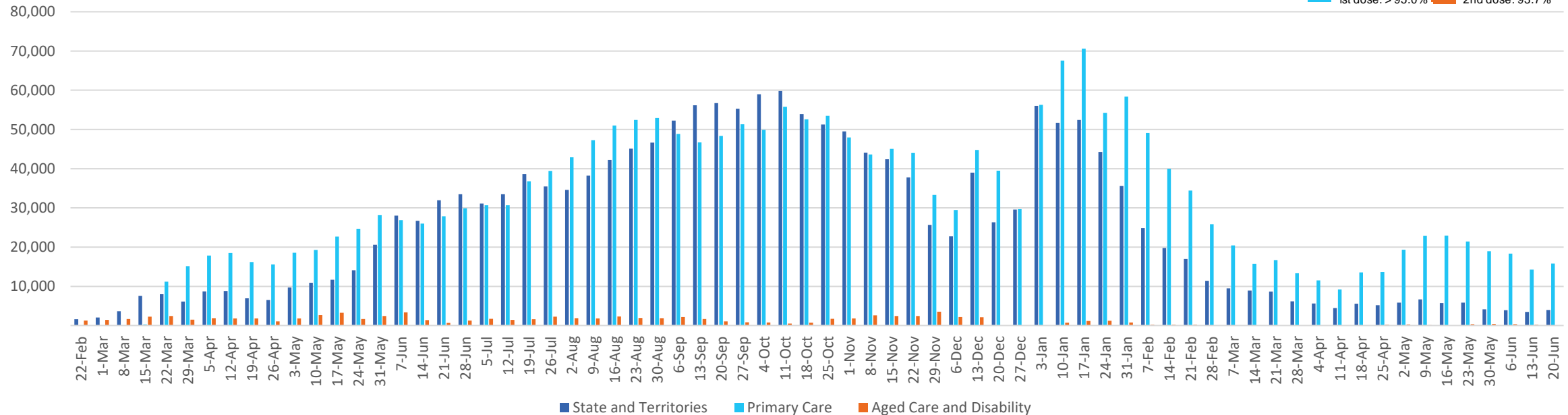
Past 7 days

	26/06/2022	27/06/2022	28/06/2022	29/06/2022	30/06/2022	01/07/2022	02/07/2022	7 day total
State and Territory	273	469	528	786	744	534	324	3,658
Aged Care and Disability	<10	<10	10	32	<10	<10	<10	50**
Primary Care	207	2,513	2,774	2,798	2,450	2,372	665	13,779
Total (rounded)	0 K	3 K	3 K	4 K	3 K	3 K	1 K	17 K

Eligible population by % coverage



## Doses administered by channel



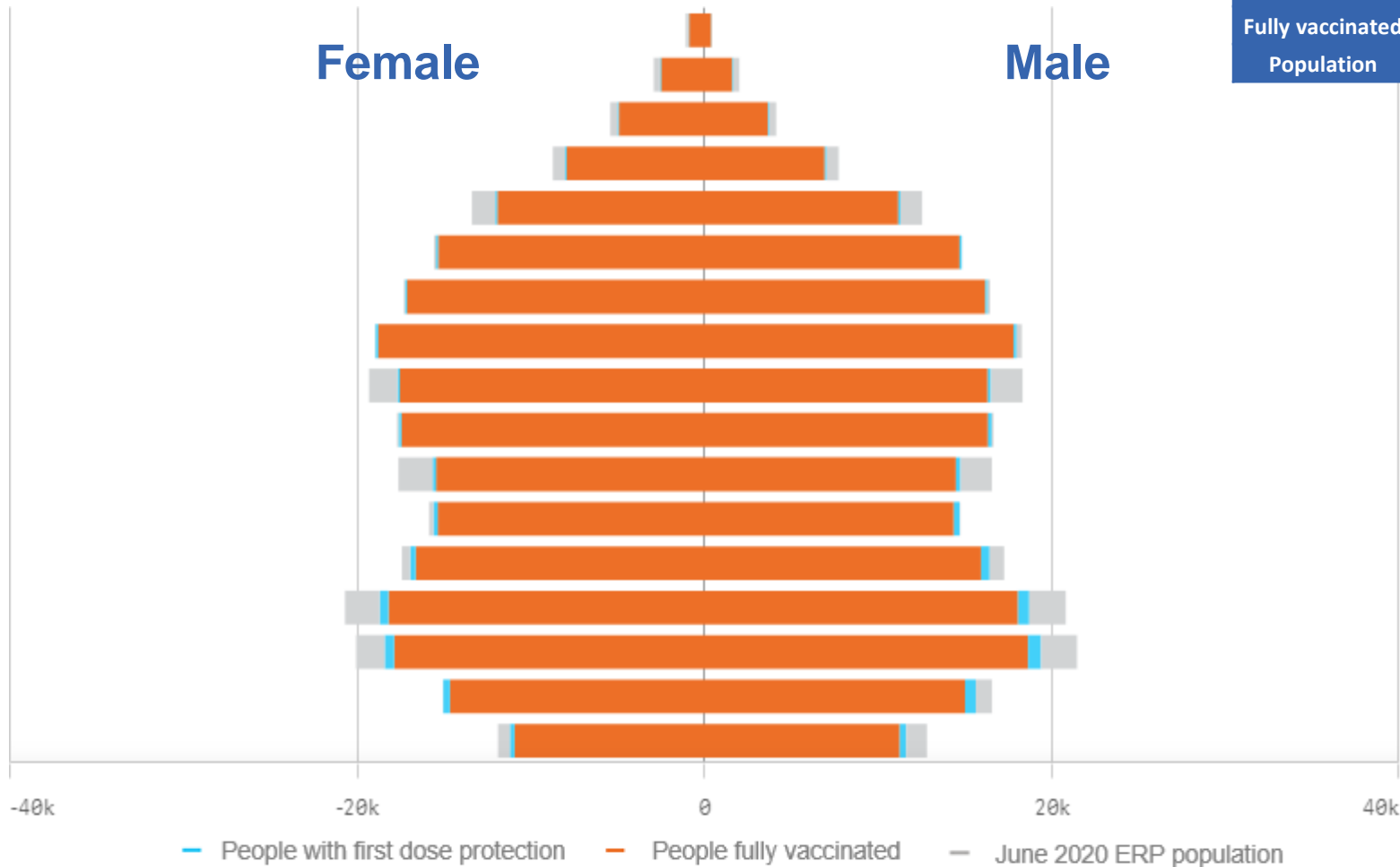
\*Administration state breakdown indicates state in which a vaccine was administered and may differ to residential state. Recent weeks may be understated.

\*\*Total appears lower due to historic changes.

Data as at:  
02 Jul 2022

# Vaccinations by State or Territory of residence

## Tasmania



	16+		50+		70+	
At least one dose	>95%	446,172	>95%	222,099	>95%	83,069
Fully vaccinated	>95%	437,162	>95%	219,689	>95%	82,006
Population	440,172		220,036		77,155	

Age	At least one dose	Fully vaccinated
95+	>95%	>95%
90-94	>95%	>95%
85-89	>95%	>95%
80-84	>95%	>95%
75-79	>95%	>95%
70-74	>95%	>95%
65-69	>95%	>95%
60-64	>95%	>95%
55-59	90.90%	89.99%
50-54	>95%	>95%
45-49	89.10%	87.65%
40-44	>95%	>95%
35-39	>95%	>95%
30-34	>95%	>95%
25-29	>95%	>95%
20-24	>95%	94.00%
16-19	92.47%	89.85%

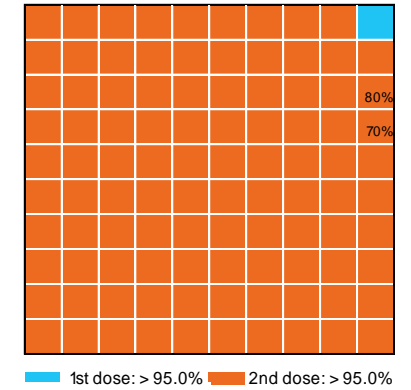
# Vaccinations by State – Tasmania

Data as at:  
02 Jul 2022

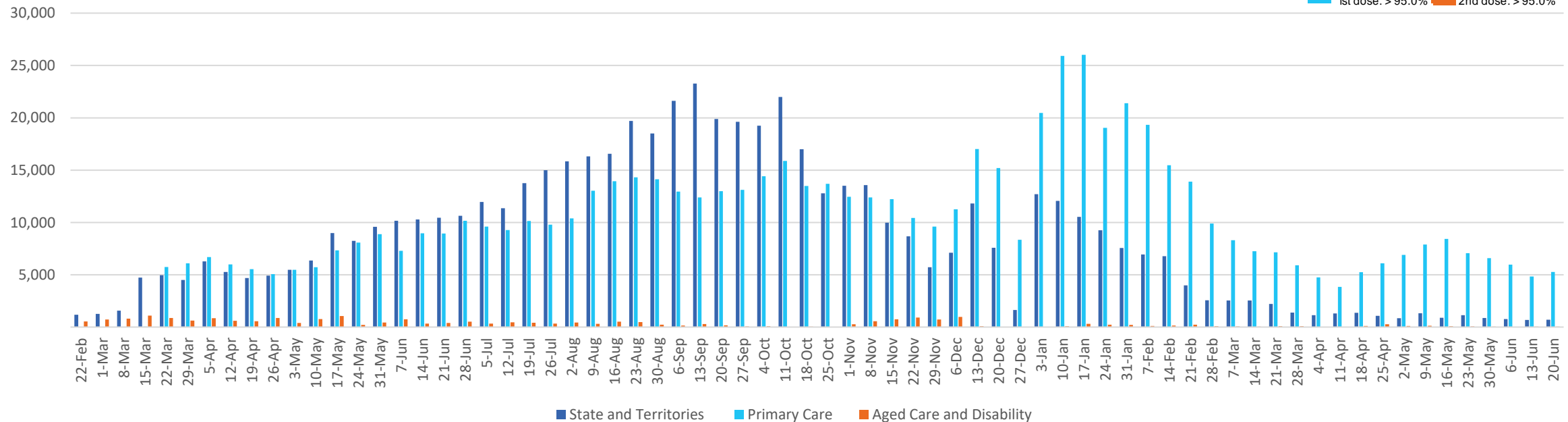
Past 7 days

	26/06/2022	27/06/2022	28/06/2022	29/06/2022	30/06/2022	01/07/2022	02/07/2022	7 day total
State and Territory	110	93	108	328	108	94	193	1,034
Aged Care and Disability	<10	<10	15	26	46	<10	<10	90
Primary Care	123	973	897	813	844	676	109	4,435
Total (rounded)	0 K	1 K	1 K	1 K	1 K	1 K	0 K	6 K

Eligible population by % coverage



## Doses administered by channel

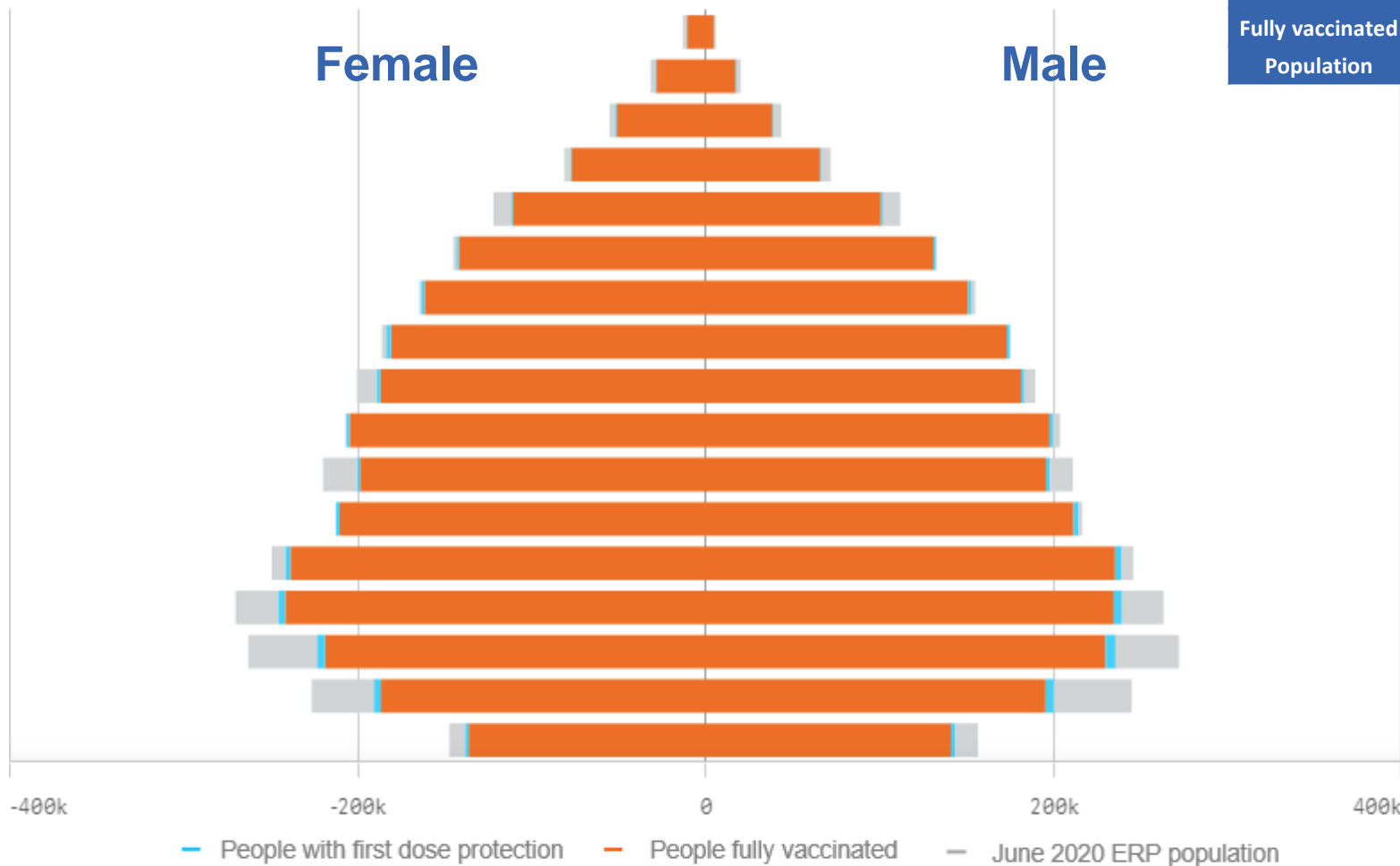


\*Administration state breakdown indicates state in which a vaccine was administered and may differ to residential state. Recent weeks may be understated.

Data as at:  
02 Jul 2022

# Vaccinations by State or Territory of residence

## Victoria



	16+		50+		70+	
At least one dose	>95%	5,176,195	>95%	2,245,645	>95%	789,654
Fully vaccinated	94.27%	5,097,586	>95%	2,217,454	>95%	778,974
Population	5,407,574		2,211,211		743,519	

Age	At least one dose	Fully vaccinated
95+	>95%	>95%
90-94	>95%	>95%
85-89	>95%	>95%
80-84	>95%	>95%
75-79	>95%	>95%
70-74	>95%	>95%
65-69	>95%	>95%
60-64	>95%	>95%
55-59	>95%	94.44%
50-54	>95%	>95%
45-49	92.51%	91.56%
40-44	>95%	>95%
35-39	>95%	>95%
30-34	91.19%	89.44%
25-29	86.13%	84.08%
20-24	83.19%	81.21%
16-19	92.82%	91.30%



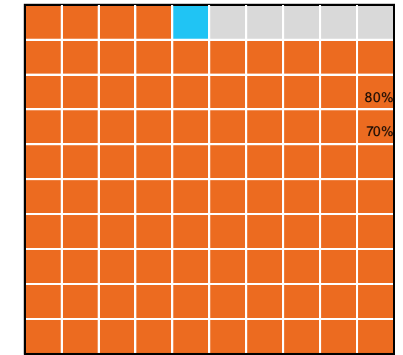
# Vaccinations by State – Victoria

Data as at:  
02 Jul 2022

## Past 7 days

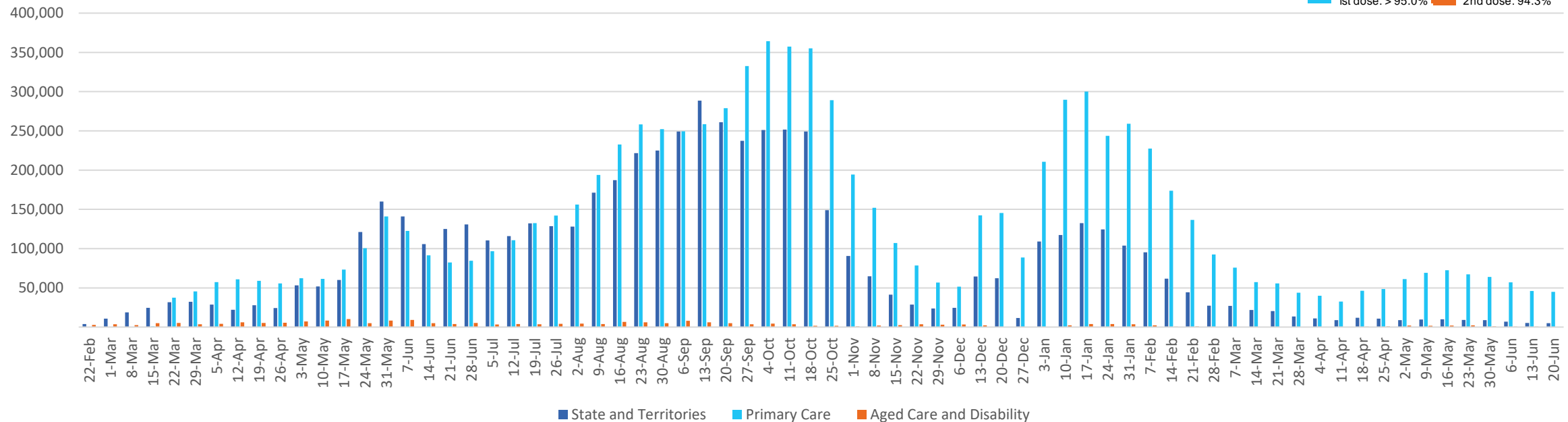
	26/06/2022	27/06/2022	28/06/2022	29/06/2022	30/06/2022	01/07/2022	02/07/2022	7 day total
State and Territory	279	739	777	805	811	408	213	4,032
Aged Care and Disability	<10	46	111	65	49	18	28	317
Primary Care	1,019	6,891	7,775	7,235	7,577	6,478	2,108	39,083
Total (rounded)	1 K	8 K	9 K	8 K	8 K	7 K	2 K	43 K

## Eligible population by % coverage



1st dose: > 95.0% 2nd dose: 94.3%

## Doses administered by channel

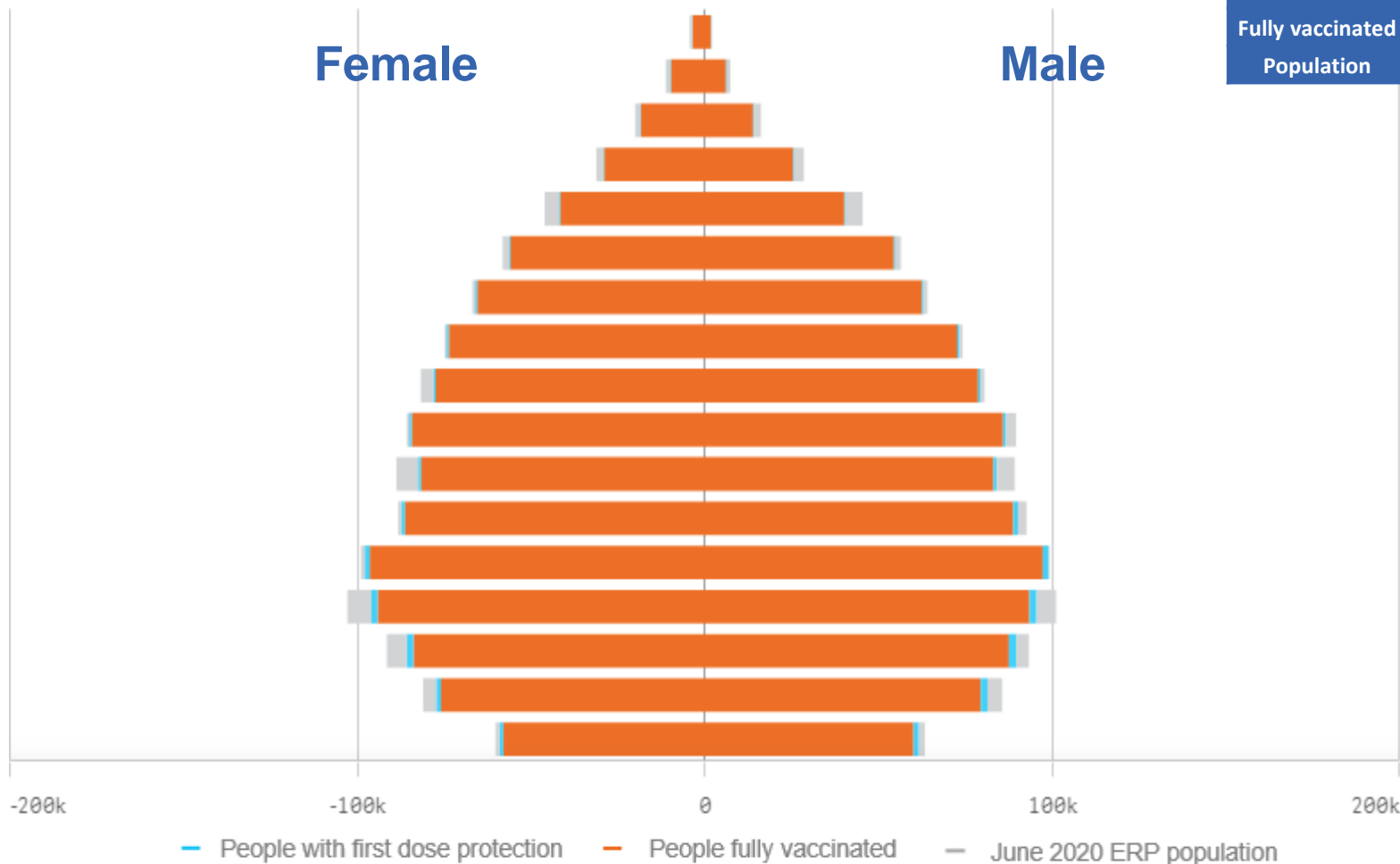


\*Administration state breakdown indicates state in which a vaccine was administered and may differ to residential state. Recent weeks may be understated.

Data as at:  
02 Jul 2022

# Vaccinations by State or Territory of residence

## Western Australia



	16+		50+		70+	
At least one dose	>95%	2,100,978	>95%	910,563	>95%	303,992
Fully vaccinated	>95%	2,069,955	>95%	901,673	>95%	300,450
Population	2,114,978		885,370		280,281	

Age	At least one dose	Fully vaccinated
95+	>95%	>95%
90-94	>95%	>95%
85-89	>95%	>95%
80-84	>95%	>95%
75-79	>95%	>95%
70-74	>95%	>95%
65-69	>95%	>95%
60-64	>95%	>95%
55-59	>95%	>95%
50-54	>95%	>95%
45-49	93.64%	92.63%
40-44	>95%	>95%
35-39	>95%	>95%
30-34	94.23%	92.24%
25-29	>95%	93.01%
20-24	>95%	93.39%
16-19	>95%	>95%

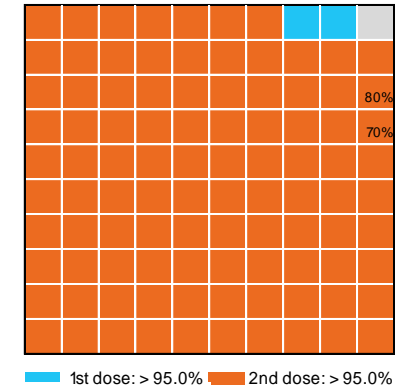
# Vaccinations by State – Western Australia

Data as at:  
02 Jul 2022

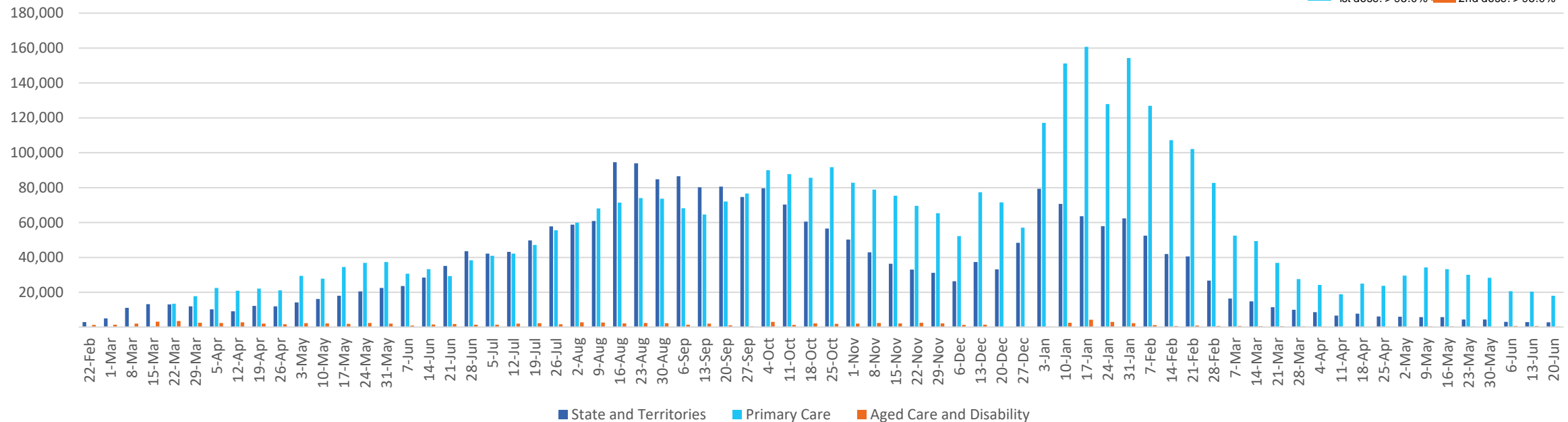
Past 7 days

	26/06/2022	27/06/2022	28/06/2022	29/06/2022	30/06/2022	01/07/2022	02/07/2022	7 day total
State and Territory	170	407	649	481	476	367	273	2,823
Aged Care and Disability	<10	33	97	16	80	61	<10	288
Primary Care	463	2,933	2,934	3,034	2,923	2,524	778	15,589
Total (rounded)	1 K	3 K	4 K	4 K	3 K	3 K	1 K	19 K

Eligible population by % coverage



## Doses administered by channel



\*Administration state breakdown indicates state in which a vaccine was administered and may differ to residential state. Recent weeks may be understated.