



**Australian Government**  
**Operation COVID Shield**

# COVID-19 Vaccine Roll-out

09 July 2022

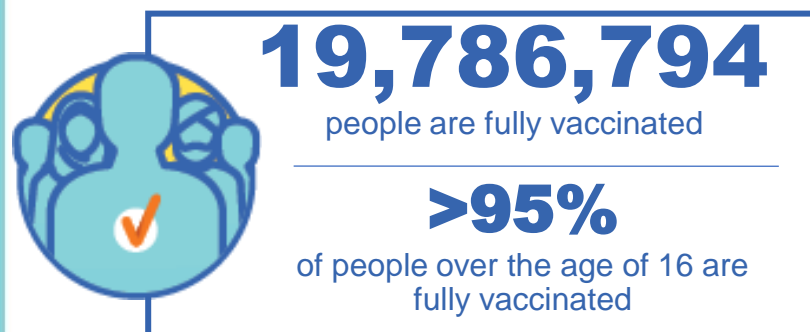
Data as at:  
08 Jul 2022

## Total vaccine doses



**60,581,175** total vaccine  
doses administered nationally as at 08 July

**+60,079** recorded in the last 24 hours

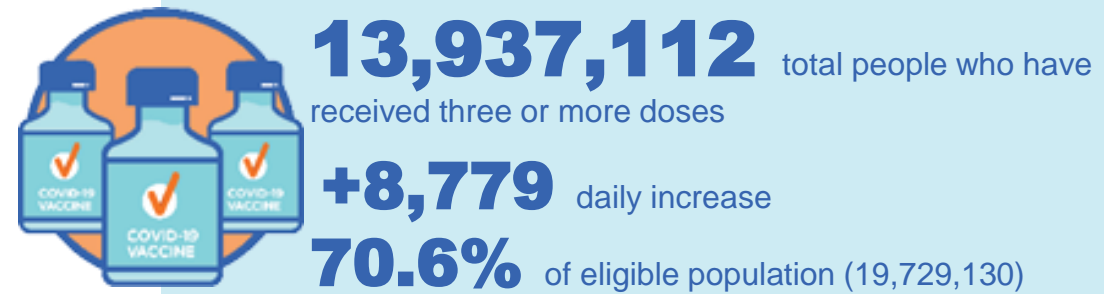
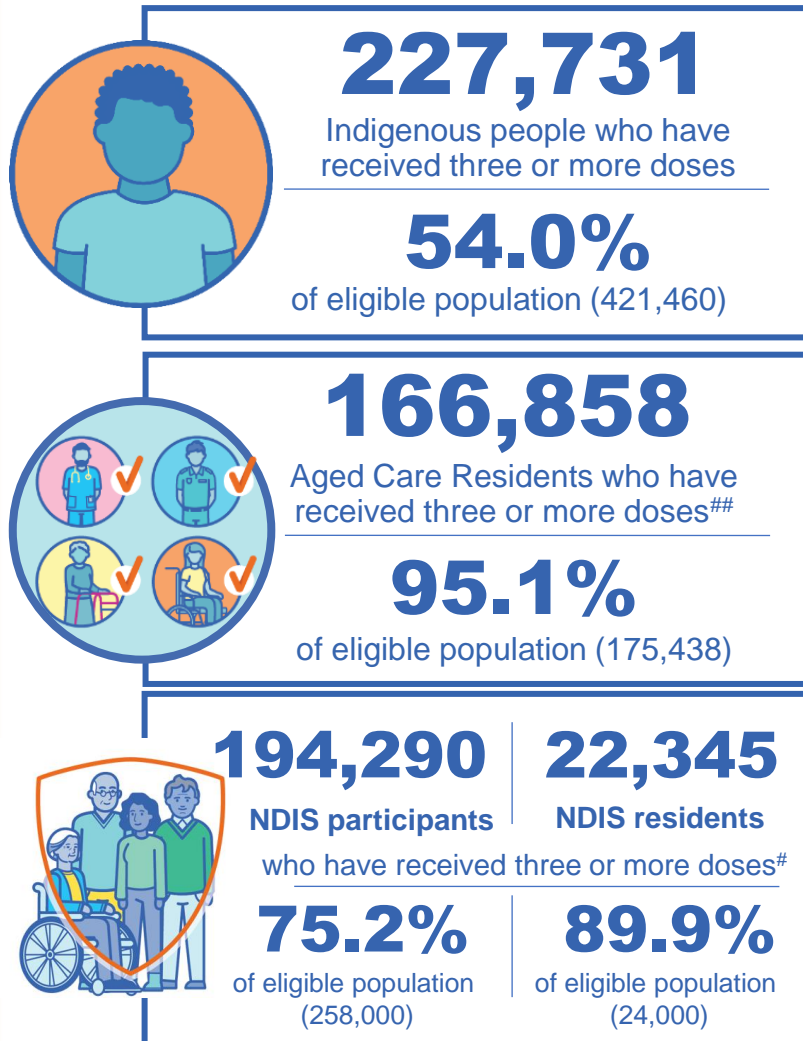


\*Administration state breakdown indicates state in which a vaccine was administered

\*\*Overall dose count includes instances of more than three doses per person in a small number of cases.

Source: Australian Immunisation Register

## Booster Vaccinations



Data as at:  
08 Jul 2022

	Number of People	Daily Increase	% of Eligible
NSW	4,255,775	3,314	68.3%
VIC	3,713,331	1,748	73.0%
QLD	2,417,181	2,049	63.6%
WA	1,706,697	515	82.8%
SA	999,191	793	74.3%
TAS	318,937	202	73.2%
ACT	274,962	133	79.1%
NT	131,711	33	78.2%

\*People may belong to multiple groups and could be represented in the above breakdowns multiple times.  
# NDIS participants data as at 06 July 2022. ## Aged Care Residents data as at 08 July 2022.

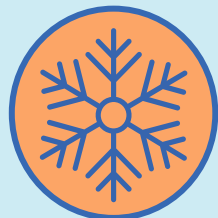
Source: Australian Immunisation Register

**119,327** doses administered to persons residing in other territories or with missing residential information

# Fourth Doses

Data as at:  
08 Jul 2022

Australia's COVID-19  
Vaccine Roadmap



**2,550,081** total people (16+) who have received four or more doses

**+45,712** daily increase



**2,225,008**

People aged 65+ who have received  
four or more doses

**61.2%**

of eligible population (3,633,035)



**94,331**

Aged Care Residents who have  
received four or more doses<sup>#</sup>

**67.8%**

of eligible population (139,213)

	Number of People 16+	Daily Increase
ACT	48,486	739
NSW	825,458	14,776
NT	11,017	244
QLD	493,022	11,201
SA	207,651	3,386
TAS	71,820	1,168
VIC	627,194	10,157
WA	252,911	3,835

**12,522** doses administered to persons  
residing in other territories or with  
missing residential information

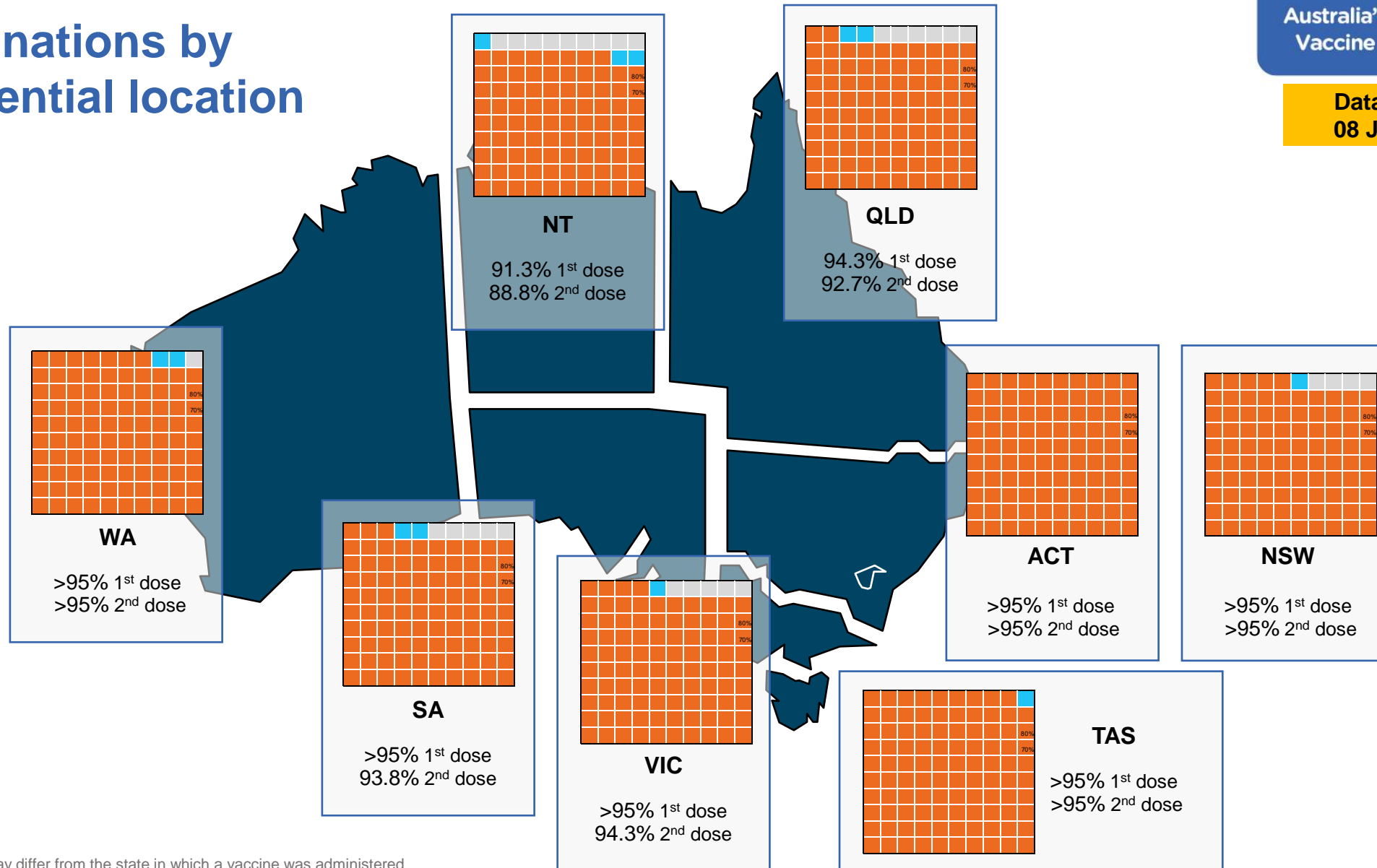
\*People become eligible for a fourth dose four months after their third dose. Individuals may belong to multiple groups and could be represented in the above multiple times.  
<sup>#</sup>Aged Care Residents data as at 07 July 2022.

Source: Australian Immunisation Register

# Vaccinations by residential location

Australia's COVID-19  
Vaccine Roadmap

Data as at:  
08 Jul 2022



\*Residential state may differ from the state in which a vaccine was administered

# Commonwealth and Jurisdiction vaccine doses administered

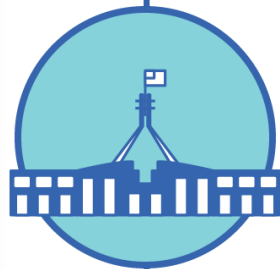
Data as at:  
08 Jul 2022



**60,581,175** total vaccine  
doses administered nationally as at 08 July  
**+ 60,079** recorded in the last 24 hours



**21,327,985**  
doses administered by state  
and territory facilities  
**+ 5,217**  
recorded in the last 24 hours



**39,253,190**  
doses administered by  
commonwealth facilities  
**+ 54,862**  
recorded in the last 24 hours

**37,933,022** total vaccine doses  
administered in primary care settings  
**1,320,168** total vaccine doses  
administered in aged care and disability  
settings

NSW	Jurisdictions	Commonwealth
Cumulative	5,147,525	13,653,767
Daily increase	910	18,704

VIC	Jurisdictions	Commonwealth
Cumulative	6,137,662	9,736,823
Daily increase	1,148	11,847

QLD	Jurisdictions	Commonwealth
Cumulative	3,864,436	7,600,765
Daily increase	618	13,598

WA	Jurisdictions	Commonwealth
Cumulative	2,537,277	4,117,634
Daily increase	1,020	3,751

TAS	Jurisdictions	Commonwealth
Cumulative	630,333	746,179
Daily increase	259	1,131

SA	Jurisdictions	Commonwealth
Cumulative	1,850,885	2,370,433
Daily increase	744	3,702

ACT	Jurisdictions	Commonwealth
Cumulative	812,337	777,930
Daily increase	506	1,809

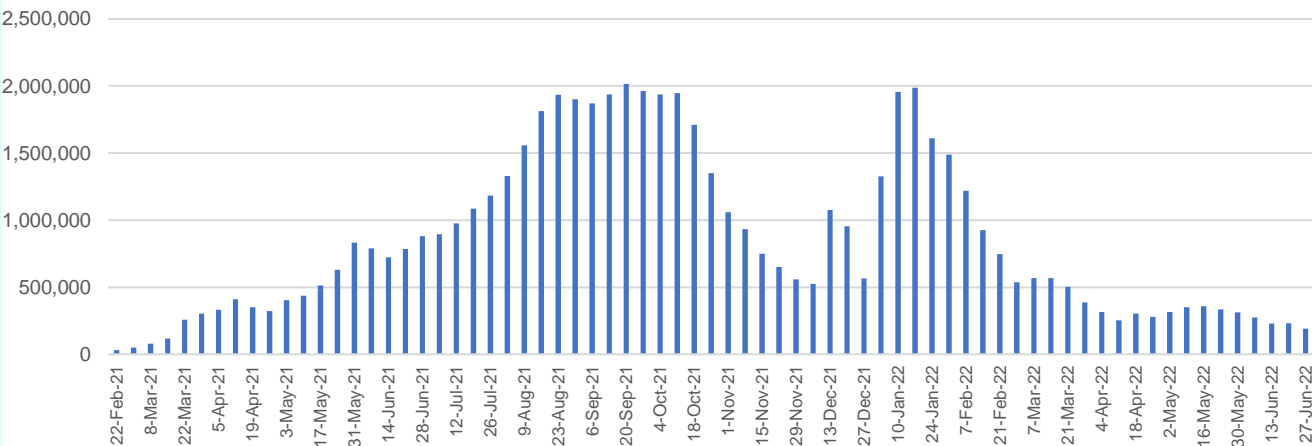
NT	Jurisdictions	Commonwealth
Cumulative	347,530	249,659
Daily increase	12	320

# Vaccine milestone charts

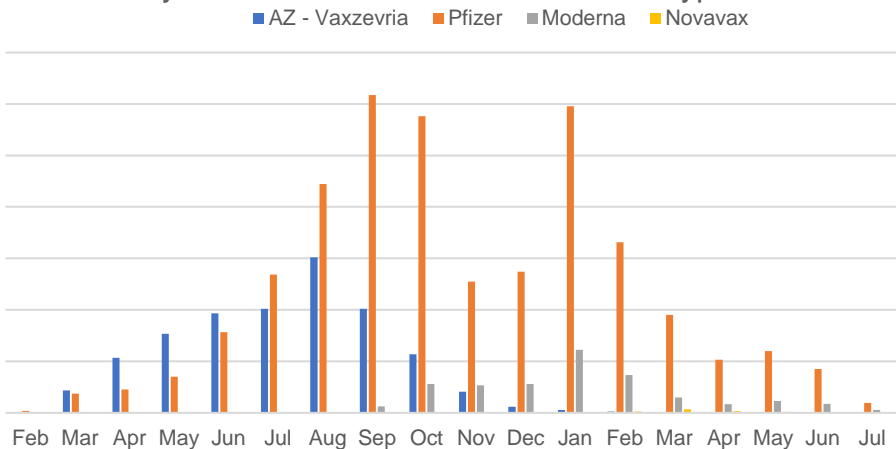
Data as at:  
08 Jul 2022

Australia's COVID-19  
Vaccine Roadmap

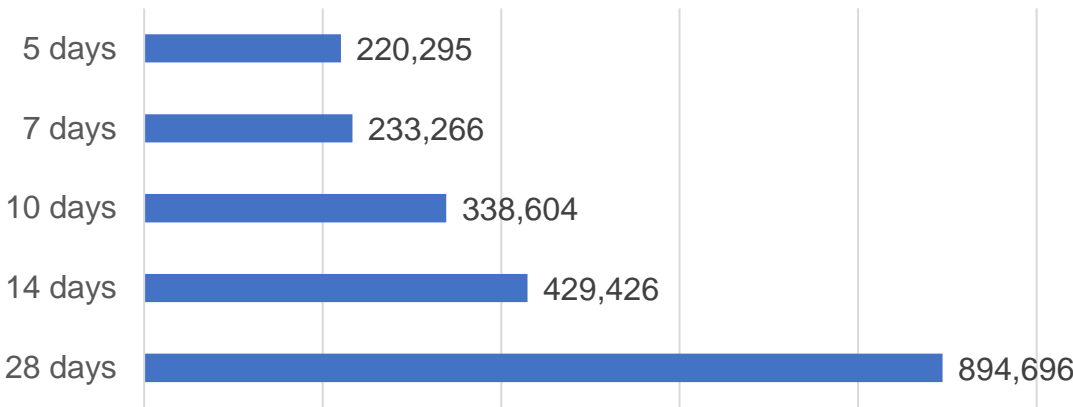
Doses Administered by Week



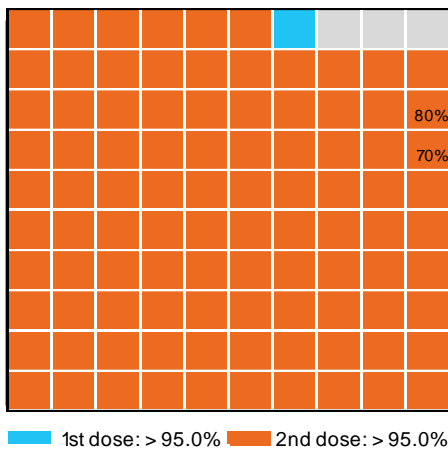
Doses by administration month and vaccine type



Doses Reported



Eligible population percentage coverage



\*Each square represents 1% of the national population.  
Squares are filled as milestones are achieved.

\*Sourced from the Australian Immunisation Register.

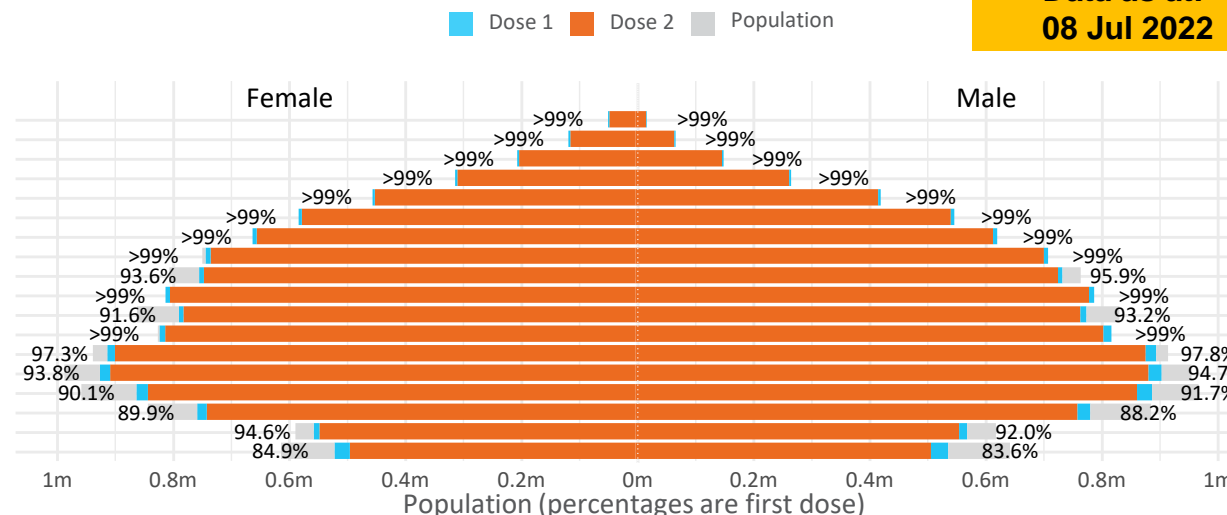
Data as at:  
08 Jul 2022

# Doses by age and sex

First and second doses by age and sex

	16+	50+	12-15	5-11
Dose 1	97.60% (20,124,187 doses / 20,619,959 people)	>99% (8,938,980 doses / 8,749,703 people)	84.26% (1,048,222 doses / 1,243,990 people)	52.29% (1,190,415 doses / 2,276,638 people)
Dose 2	95.96% (19,786,794 doses / 20,619,959 people)	>99% (8,830,939 doses / 8,749,703 people)	79.74% (991,993 doses / 1,243,990 people)	39.95% (909,452 doses / 2,276,638 people)

Age	Dose 1	Dose 2
95+	66,318 (>99%)	62,858 (>99%)
90-94	183,122 (>99%)	177,620 (>99%)
85-89	352,733 (>99%)	346,001 (>99%)
80-84	573,805 (>99%)	566,673 (>99%)
75-79	868,111 (>99%)	859,614 (>99%)
70-74	1,120,203 (>99%)	1,108,777 (>99%)
65-69	1,272,757 (>99%)	1,257,798 (>99%)
60-64	1,439,753 (>99%)	1,423,139 (>99%)
55-59	1,475,644 (94.9%)	1,458,894 (93.8%)
50-54	1,586,534 (>99%)	1,569,565 (>99%)
45-49	1,550,597 (92.5%)	1,532,216 (91.4%)
40-44	1,627,559 (>99%)	1,603,559 (99.0%)
35-39	1,794,990 (97.8%)	1,762,744 (96.1%)
30-34	1,820,612 (94.6%)	1,778,531 (92.5%)
25-29	1,743,933 (91.5%)	1,695,896 (89.0%)
20-24	1,531,239 (89.4%)	1,490,730 (87.1%)
16-19	1,116,277 (93.4%)	1,092,179 (91.3%)
12-15	1,048,222 (84.3%)	991,993 (79.7%)



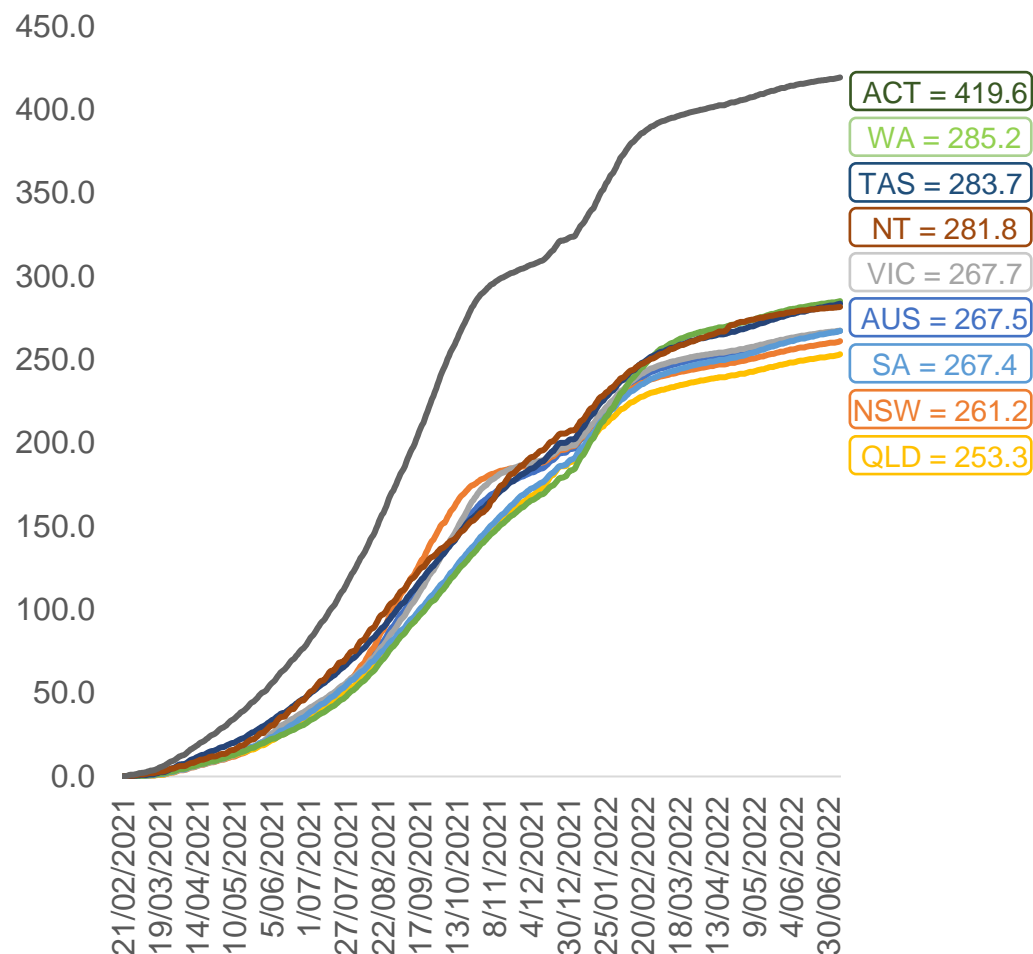
	AUS	ACT	NSW	NT	QLD	SA	TAS	VIC	WA
16 and over - dose 1	20,124,187	353,728	6,346,753	173,947	3,877,795	1,380,341	446,323	5,178,828	2,102,156
16 and over - dose 2	19,786,794	347,971	6,248,068	169,274	3,813,990	1,351,042	437,325	5,099,947	2,071,095
16 and over - population	20,619,959*	344,037	6,565,651	190,571	4,112,707	1,440,400	440,172	5,407,574	2,114,978
16 and over % with dose 1	97.60%	>99%	96.67%	91.28%	94.29%	95.83%	>99%	95.77%	>99%
16 and over % with dose 2	95.96%	>99%	95.16%	88.82%	92.74%	93.80%	>99%	94.31%	97.93%
5 to 11 - dose 1	1,190,415	31,723	355,711	13,126	206,242	83,503	28,412	324,300	139,925
5 to 11 - dose 2	909,452	27,506	278,335	8,830	151,502	64,048	23,241	248,401	102,995
5 to 11 - population	2,276,638	39,789	716,460	24,750	478,731	148,816	45,033	578,499	244,154
5 to 11 % with dose 1	52.29%	79.73%	49.65%	53.03%	43.08%	56.11%	63.09%	56.06%	57.31%
5 to 11 % with dose 2	39.95%	69.13%	38.85%	35.68%	31.65%	43.04%	51.61%	42.94%	42.18%
12 to 15 - dose 1	1,048,222	20,123	322,430	10,727	205,429	68,189	22,799	273,867	115,446
12 to 15 - dose 2	991,993	19,565	308,000	9,666	191,829	64,404	21,688	262,018	106,836
12 to 15 - population	1,243,990	19,693	390,330	13,060	270,146	82,747	26,308	308,611	132,869
12 to 15 % with dose 1	84.26%	>99%	82.60%	82.14%	76.04%	82.41%	86.66%	88.74%	86.89%
12 to 15 % with dose 2	79.74%	>99%	78.91%	74.01%	71.01%	77.83%	82.44%	84.90%	80.41%

\*National population will not equal sum of listed jurisdictions due to a small number of people counted in national population residing in some 'other' territories. Sum of state doses will not add to national total as some records are unable to be geocoded to a State or Territory.  
Doses sourced from Australian Immunisation Register, population from ABS ERP June 2020



# Vaccinations by location

Cumulative total doses administered vs eligible state populations\*

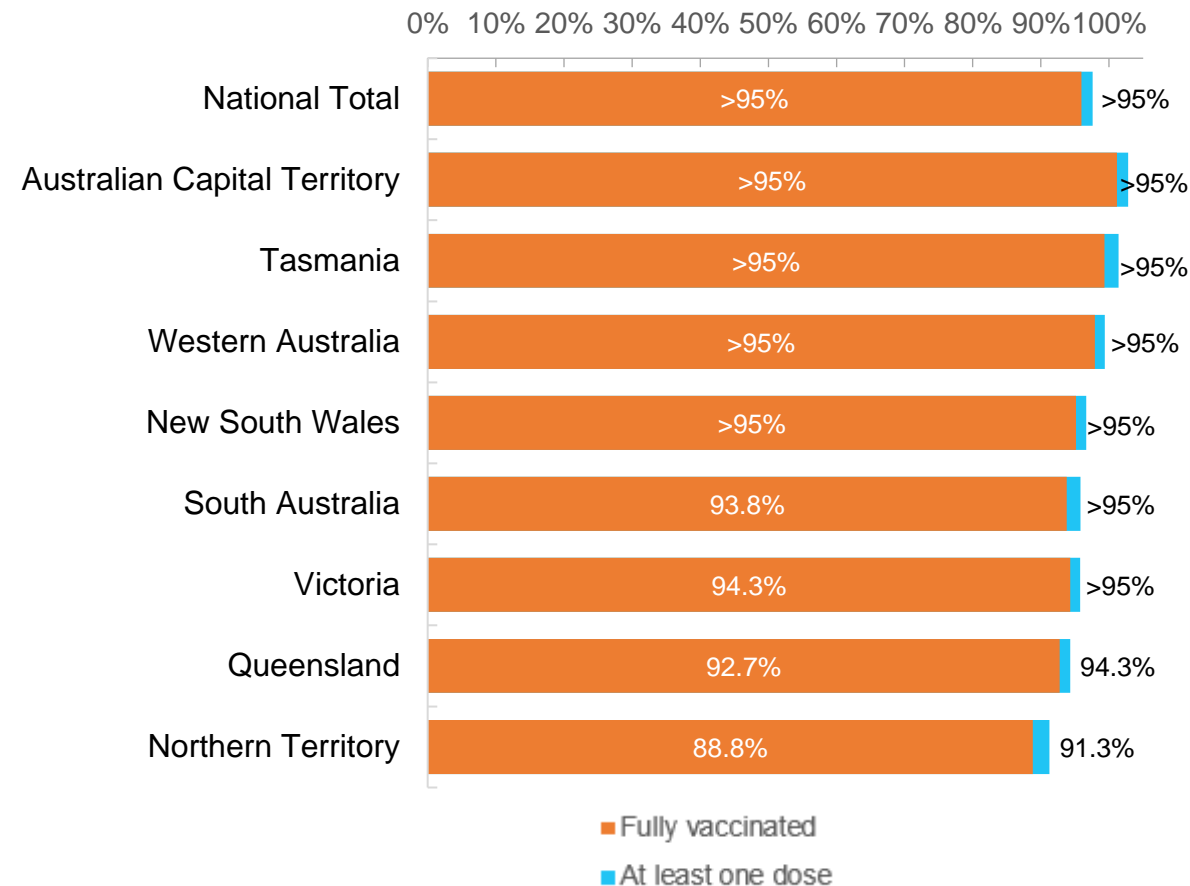


\*Not an indication of percentage vaccinated, numbers will exceed 100 due to multiple doses required per person of the population. All doses are included for those aged 12 and above, and are based on vaccination provider location.

Data as at:  
08 Jul 2022

Australia's COVID-19  
Vaccine Roadmap

First and Second Doses by residential location



# Aboriginal and Torres Strait Islander peoples

## Number of people vaccinated

Data as at:  
05 Jul 2022  
Updated weekly

Australia's COVID-19  
Vaccine Roadmap



**443,710**

people over the age of 16  
have had at least one dose

**85.0%**

of people over the age of 16  
have had at least one dose



**425,479**

people over the age of 16  
are fully vaccinated

**81.5%**

of people over the age of 16 are  
fully vaccinated



People aged 12 – 15 years

**47,820**

**41,926**

**67.7%**

At least one dose

**59.4%**

Fully vaccinated

### 178 Aboriginal community controlled health services (ACCHS)

0#

50

27

44

12

3

21

21

**ACT**

**NSW**

**NT**

**QLD**

**SA**

**TAS**

**VIC**

**WA**

Medicare Address State <sup>##</sup>	Individuals Dose 1	Individuals Dose 1 %	Individuals Dose 2	Individuals Dose 2 %
Australian Capital Territory	4,800	91.8%	4,680	89.5%
New South Wales	136,008	87.3%	132,965	85.4%
Northern Territory	41,498	89.7%	39,543	85.5%
Queensland	116,679	81.8%	111,358	78.1%
South Australia	20,088	80.6%	18,726	75.1%
Tasmania	13,900	88.9%	13,499	86.3%
Victoria	35,711	90.4%	34,923	88.4%
Western Australia	53,593	86.8%	49,992	81.0%
Unknown/Other Territories	21,433	70.4%	19,793	65.1%
<b>Totals</b>	<b>443,710</b>	<b>85.0%</b>	<b>425,479</b>	<b>81.5%</b>

Source: Australian Immunisation Register

\*Identifying as Aboriginal and Torres Strait Islander is optional and the estimated population may be under reported.

\*\*Includes all Aboriginal and Torres Strait Islander peoples who have received a vaccination, not limited to those administered in an ACCHS setting

#ACCHS in the ACT are currently operating as a Commonwealth Vaccine Clinics so not included to avoid double counting

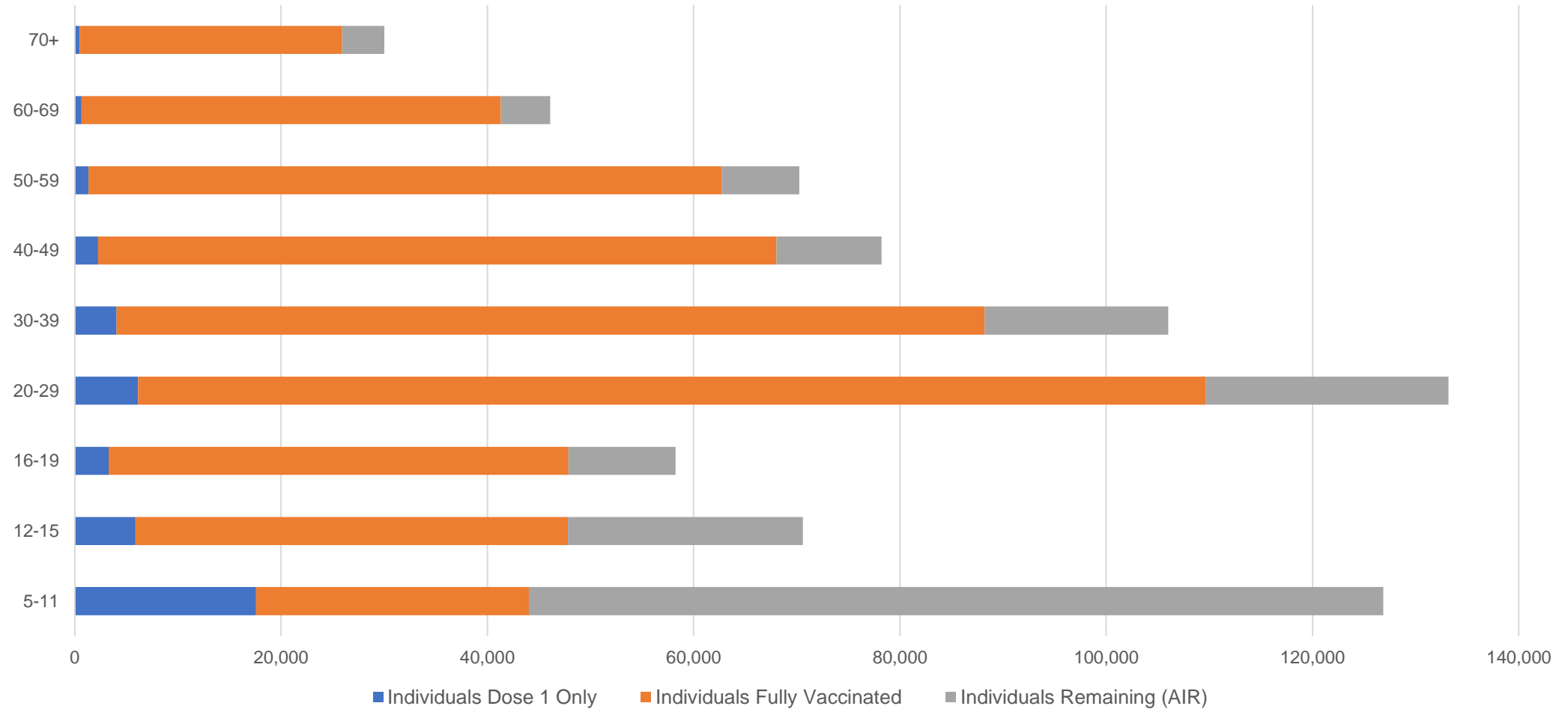
##The above table includes all identified Aboriginal and Torres Strait Islander people who are aged 16 and above by their state of residence.

# Aboriginal and Torres Strait Islander peoples

## Number of people vaccinated by age

Data as at:  
05 Jul 2022  
Updated weekly

Australia's COVID-19  
Vaccine Roadmap



Source: Australian Immunisation Register

# Commonwealth primary care

Data as at:  
08 Jul 2022

Australia's COVID-19  
Vaccine Roadmap



## Primary care vaccine administration sites

<b>5,697</b>	<b>127</b>	<b>178</b>	<b>3,613</b>
GPs	CVCs	ACCHS	Pharmacies



**37,933,022** total vaccine doses administered  
primary care settings as at 08 July  
**+ 54,444** recorded in the last 24 hours

## Primary care vaccinations by provider type

	Doses administered	Daily increase	7 day increase
General Practice* includes other Commonwealth	30,260,097	29,919	126,297
Pharmacy	7,672,925	24,525	84,969

**NSW**  
**13,079,851**  
(+19,073 daily increase)

**VIC**  
**9,404,353**  
(+11,831 daily increase)

**QLD**  
**7,316,388**  
(+13,735 daily increase)

**WA**  
**3,977,089**  
(+3,670 daily increase)

**TAS**  
**725,271**  
(+1,209 daily increase)

**SA**  
**2,289,182**  
(+3,777 daily increase)

**ACT**  
**600,421**  
(+959 daily increase)

**NT**  
**223,542**  
(+312 daily increase)

**316,925**

doses administered to persons  
residing in other territories or with  
missing residential information

\*General practice includes Commonwealth Vaccination Clinics, Aboriginal Community Health Centres, Royal Flying Doctor Service and other Commonwealth vaccination facilities

Source: Australian Immunisation Register

Data as at:  
08 Jul 2022

# Commonwealth aged care and disability doses administered



**1,320,168** (+ 418 last 24 hours)

Total vaccine doses administered in aged care and disability facilities as at 08 July

Number of doses administered as part of the Commonwealth aged and disability care rollout

**NSW**  
**572,877**  
(+60 daily increase)

**VIC**  
**247,990**  
(+76 daily increase)

**QLD**  
**210,473**  
(+125 daily increase)

**WA**  
**112,765**  
(+47 daily increase)

**TAS**  
**23,771**  
(+12 daily increase)

**SA**  
**86,481**  
(+33 daily increase)

**ACT**  
**17,950**  
(<10 daily increase)

**NT**  
**7,703**  
(<10 daily increase)

**40,158**

doses administered to persons  
residing in other territories or with  
missing residential information

\*Sourced from the Australian Immunisation Register. Includes all persons vaccinated at participating residential aged care, disability and related industry settings.

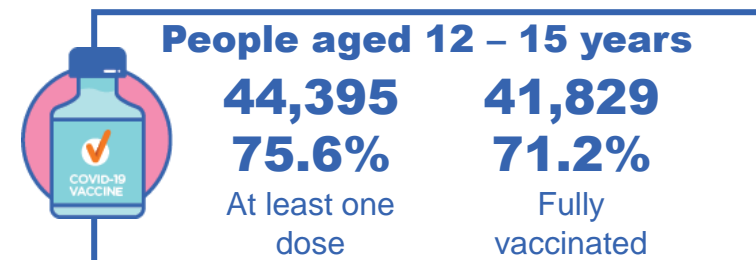
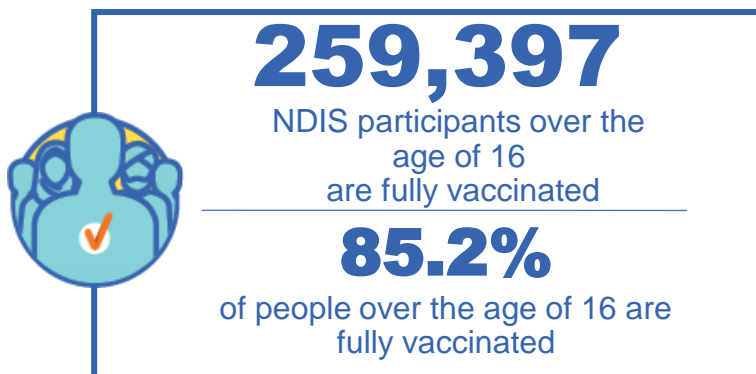
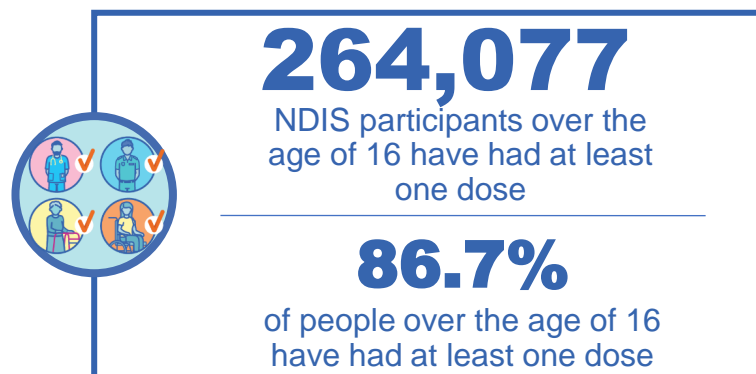
\*\*State level breakdown indicates the residential location and may not align to the state in which the vaccination occurred.

Source: Australian Immunisation Register

# National Disability Insurance Scheme (NDIS) reported vaccinations

Data as at:  
07 July 2022  
Updated weekly

Australia's COVID-19  
Vaccine Roadmap



## NDIS participant vaccinations

	People aged 16+ with at least one dose	People aged 16+ fully vaccinated	% People aged 16+ with at least one dose	% People aged 16+ fully vaccinated
ACT	4,967	4,905	88.9%	87.8%
NSW	80,766	79,502	87.3%	85.9%
NT	2,295	2,225	77.6%	75.2%
QLD	52,453	51,465	84.9%	83.3%
SA	21,630	21,133	84.4%	82.4%
TAS	6,600	6,449	87.0%	85.0%
VIC	70,118	68,967	87.9%	86.4%
WA	25,248	24,751	88.0%	86.3%
National	264,077	259,397	86.7%	85.2%

Source: Linkage between National Disability Insurance Agency data and the Australian Immunisation Register. Total NDIS participant numbers as at 30 June. Australian Immunisation Register data as at 06 July. Includes all participants regardless of residence type.

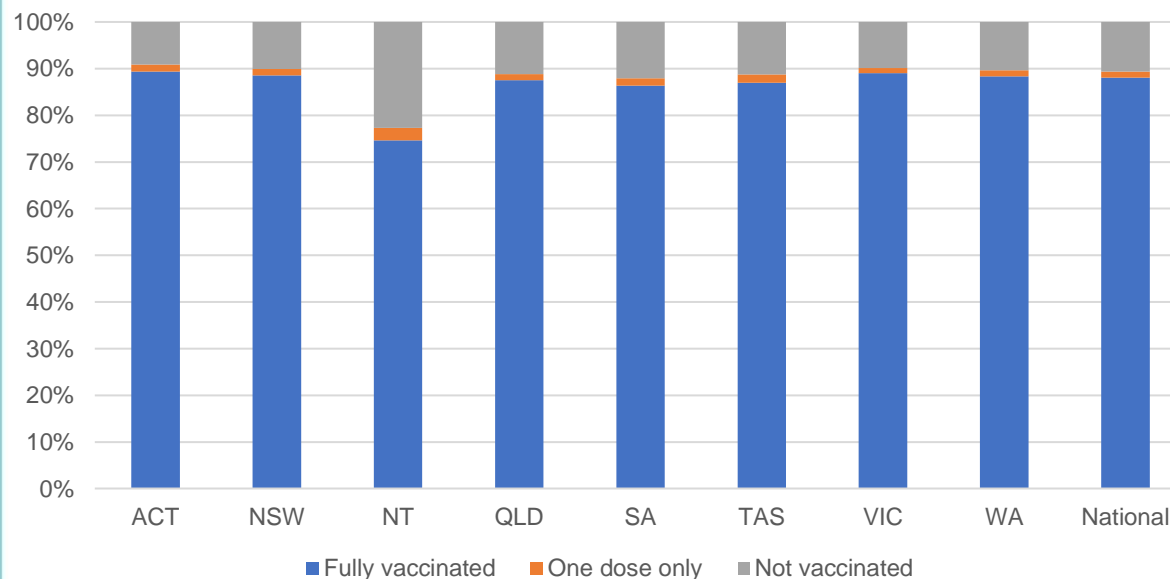
# National Disability Insurance Scheme (NDIS) reported vaccinations

Data as at:  
07 July 2022  
Updated weekly

Australia's COVID-19  
Vaccine Roadmap

NATIONAL	Total people with at least one dose	People fully vaccinated	Total number of individuals in cohort	% People with at least one dose	% People fully vaccinated
NDIS participants living in disability accommodation	21,321	21,001	23,858	89.4%	88.0%

## NDIS participants in disability and aged care accommodation



Source: Linkage between National Disability Insurance Agency data and the Australian Immunisation Register. Includes participants residing in disability accommodation only.

Source: Total NDIS participant numbers as at 30 June. Participant data as at 06 July. Australian Immunisation Register data as at 06 July. Worker data as at 06 July.

## NDIS workforce vaccinations

	NDIS workers with at least one dose	NDIS workers fully vaccinated	% NDIS workers with at least one dose	% NDIS workers fully vaccinated
NSW	128,323	123,394	98.3%	94.5%
VIC	117,599	114,365	98.4%	95.7%
QLD	71,472	70,626	97.9%	96.7%
WA	34,485	33,092	99.0%	95.0%
SA	35,267	33,506	98.6%	93.6%
TAS	12,424	12,017	98.8%	95.6%
ACT	12,340	12,313	99.8%	99.6%
NT	3,966	3,818	99.6%	95.9%
<b>TOTAL</b>	<b>415,876</b>	<b>403,131</b>	<b>98.4%</b>	<b>95.4%</b>

Source: the NDIS Commission has established a requirement for registered NDIS providers who provide intensive disability support services to report on the vaccination status of workers they employ, or otherwise engage, to deliver NDIS-funded supports and services, and who are required to be vaccinated in accordance with in-force state and territory public health orders. The statistics reflect data reported to the NDIS Commission by registered NDIS providers and should be considered indicative and subject to change

Note: Some registered NDIS providers are yet to report on the vaccination status of their workforce. The NDIS Commission is working with those providers around reporting requirements.

Remaining workers not included include those exempt from vaccination requirements, workers whose vaccination status is not yet verified by the provider (such as workers on leave) and provider reporting anomalies.



# Residential aged care vaccination rollout

Residential aged care facilities status

**175,438**

People fully vaccinated

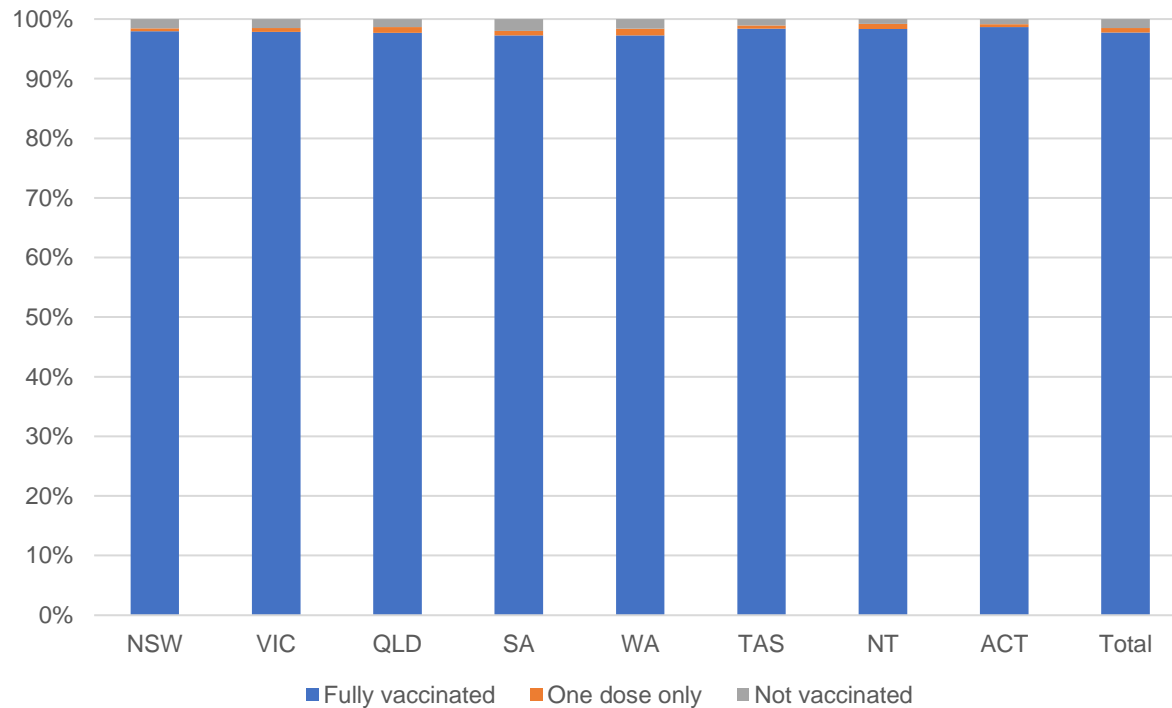
**176,706**

People with at least one dose

Australia's COVID-19 Vaccine Roadmap

Data as at:  
07 July 2022  
Updated weekly

## Aged care resident vaccinations



## Aged care worker vaccinations

Jurisdictions	Total workers with at least one dose	Workers fully vaccinated	% Workers with at least one dose	% Workers fully vaccinated
NSW	77,266	77,142	99.9%	99.7%
VIC	70,674	70,673	100.0%	100.0%
QLD	48,579	48,565	100.0%	100.0%
SA	26,594	26,585	100.0%	100.0%
WA	24,718	24,716	100.0%	100.0%
TAS	7,536	7,536	100.0%	100.0%
NT	904	904	100.0%	100.0%
ACT	2,954	2,954	100.0%	100.0%
Total	259,225	259,075	100.0%	99.9%

Source: Residential aged care provider self-reported COVID-19 vaccination information

\*Status updates are provided by facilities at least once per week. Reporting is updated Monday to Friday to encompass different facility updates being made on different days.

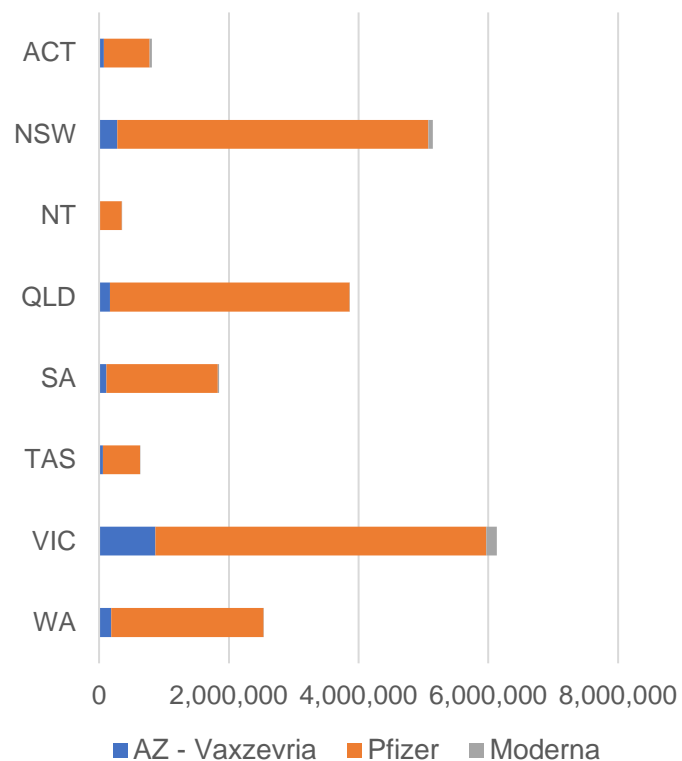
Data is sourced directly from Aged Care Service Providers and is not drawn or closely aligned with data from AIR due to inconsistencies and potential lags in uploading of records.



Data as at:  
08 Jul 2022

## Jurisdiction administered

Total vaccine doses administered in State and Territory clinics as at 08 July



**21,327,985** total vaccine doses administered  
in State and Territory clinics as at 08 July  
+ **5,217** recorded in the last 24 hours  
+ **19,845** recorded in the last 7 days

**NSW**  
**5,147,525**  
(+910 daily  
increase)

**VIC**  
**6,137,662**  
(+1,148 daily  
increase)

**QLD**  
**3,864,436**  
(+618 daily  
increase)

**WA**  
**2,537,277**  
(+1,020 daily  
increase)

**TAS**  
**630,333**  
(+259 daily  
increase)

**SA**  
**1,850,885**  
(+744 daily  
increase)

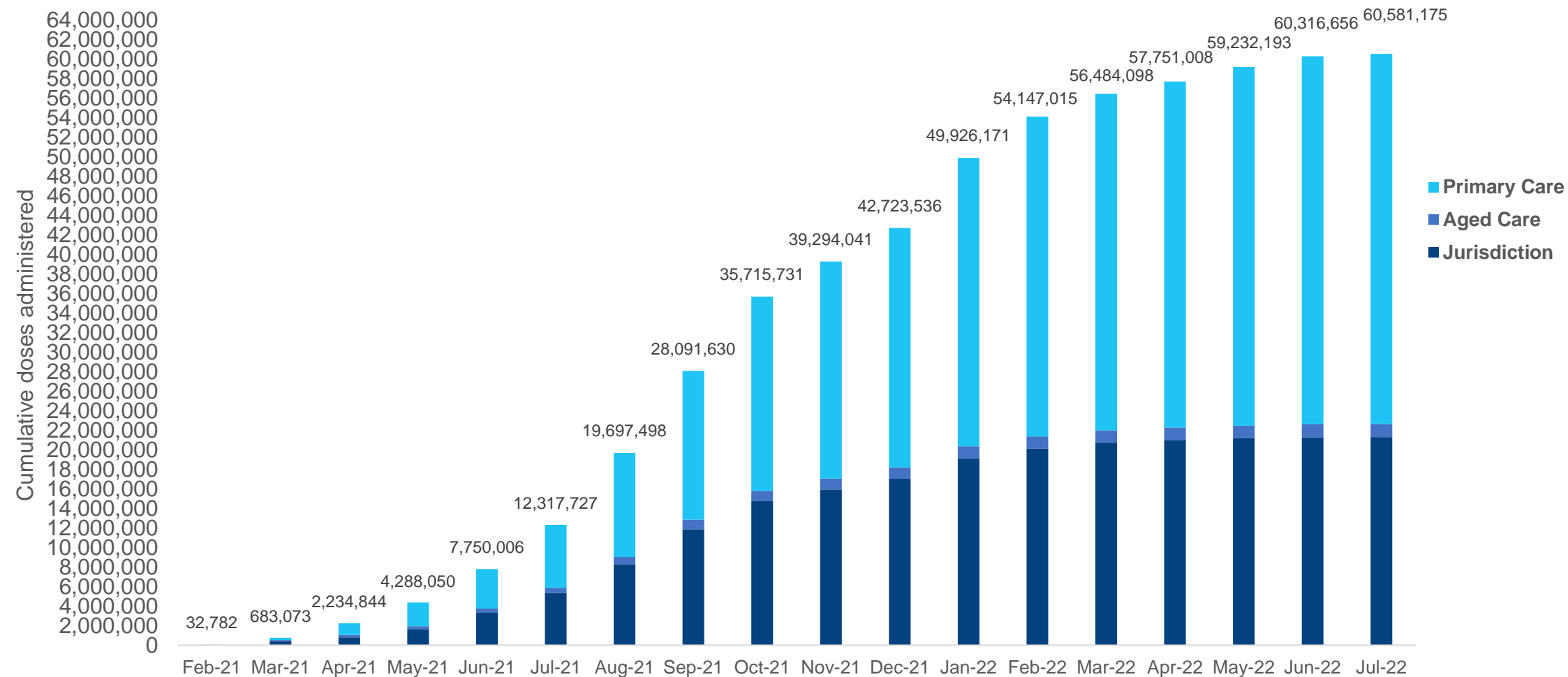
**ACT**  
**812,337**  
(+506 daily  
increase)

**NT**  
**347,530**  
(+12 daily  
increase)

\*Sourced from the Australian Immunisation Register. Numbers are calculated as difference in daily cumulative reported numbers to allow for historical corrections.

# Cumulative doses administered by channel

Data as at:  
08 Jul 2022

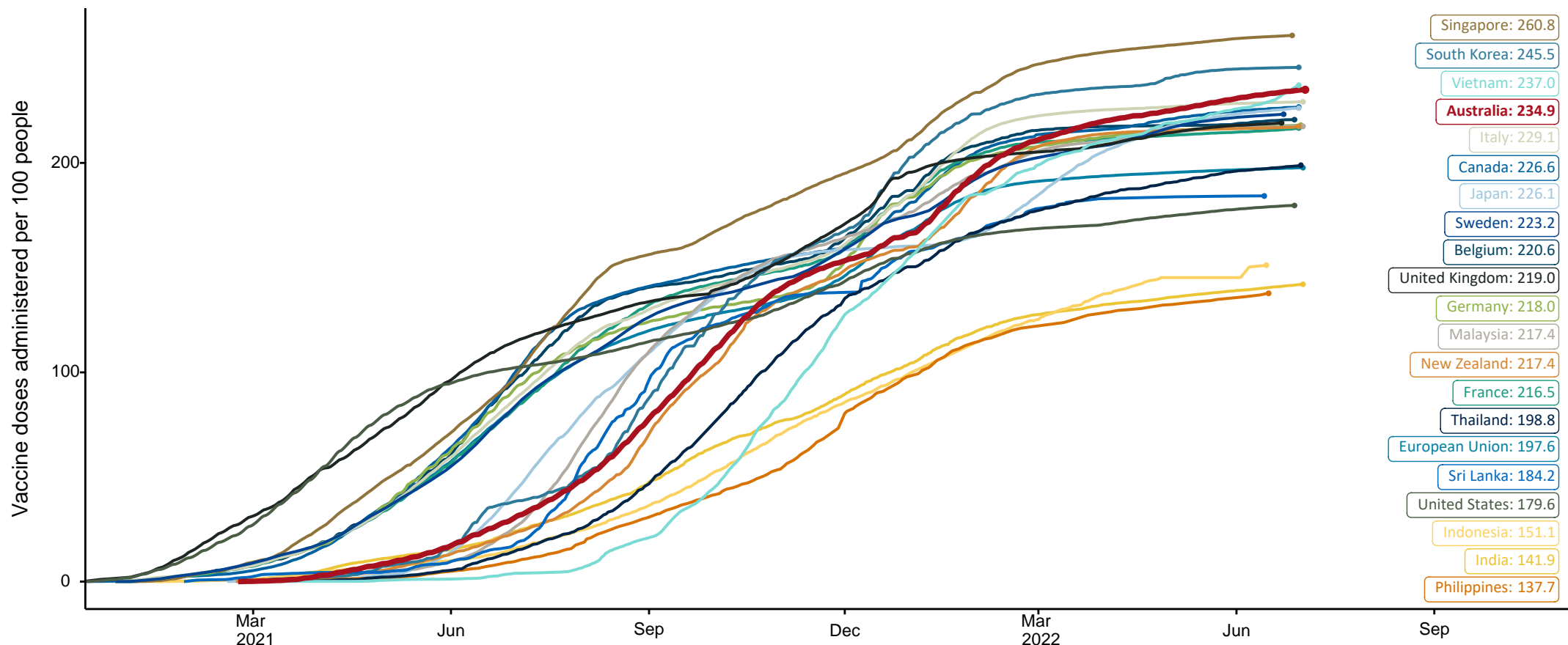


Source: Australian Immunisation Register

# COVID-19 vaccine doses per 100, Australia and select countries

Data as at:  
03 July 2022  
Updated weekly

Australia's COVID-19  
Vaccine Roadmap



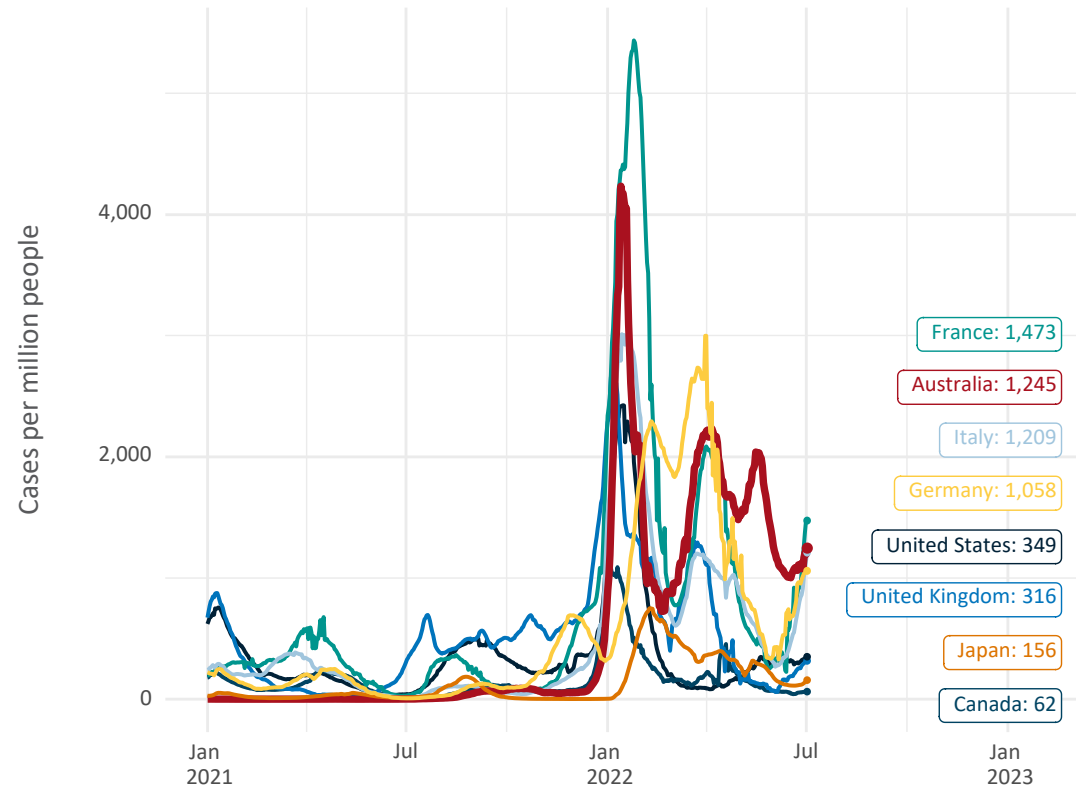
Note: From 11 January 2022, data for Australia includes all doses administered to people 5 and over. Prior to 11 January, data was for 12 and over.  
Source: Department of Health (Australia), Our World in Data (international)  
Latest data: 03 July

# International data – COVID-19

Australia's COVID-19  
Vaccine Roadmap

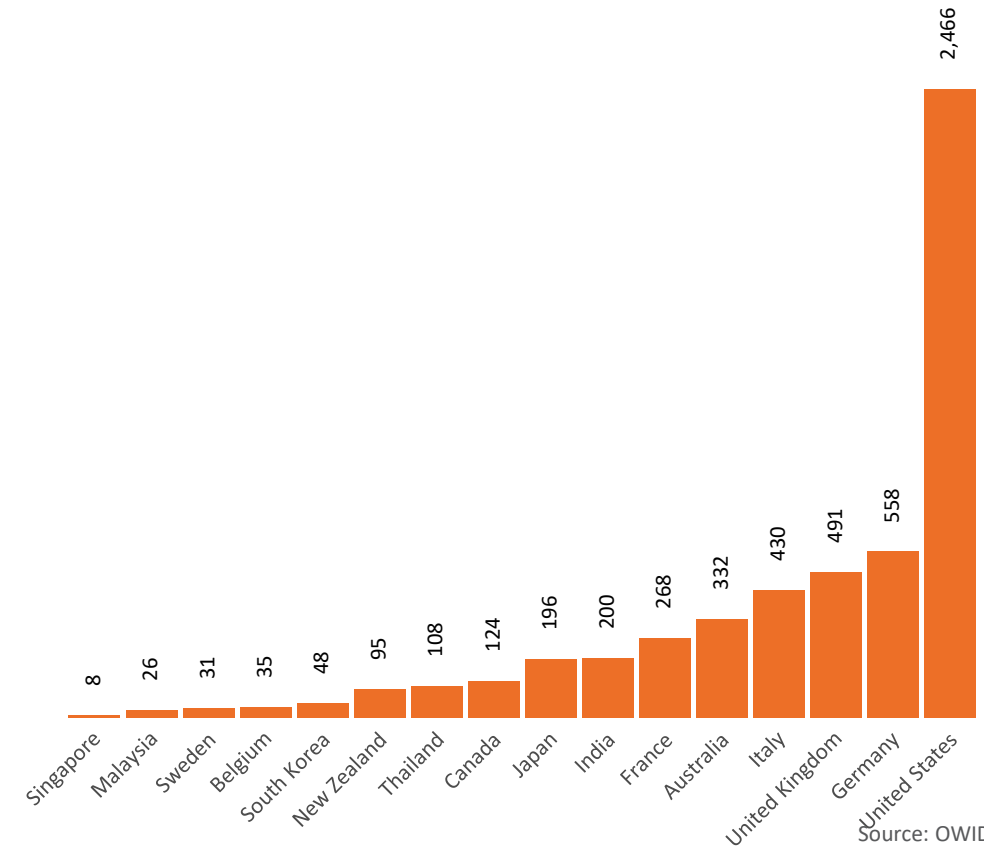
Data as at:  
03 July 2022  
Updated weekly

New daily cases per million since 2021, Australia and G7 countries  
Smoothed - 7 day average



Source: OWID  
Data downloaded: 04 Jul 2022 09:20  
Latest data: 02 Jul 2022

COVID-19 deaths in past 7 days - Australia and select countries



Source: OWID  
Data downloaded: 04 Jul 2022 09:20  
Latest data: 02 Jul 2022