



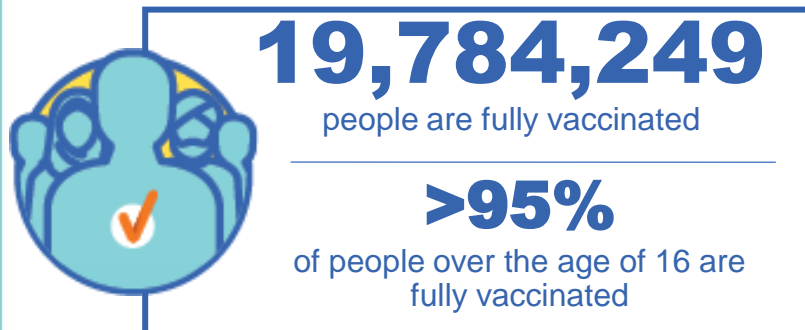
Australian Government
Operation COVID Shield

COVID-19 Vaccine Roll-out

07 July 2022

Data as at:
06 Jul 2022

Total vaccine doses



60,472,169 total vaccine
doses administered nationally as at 06 July

+40,758 recorded in the last 24 hours

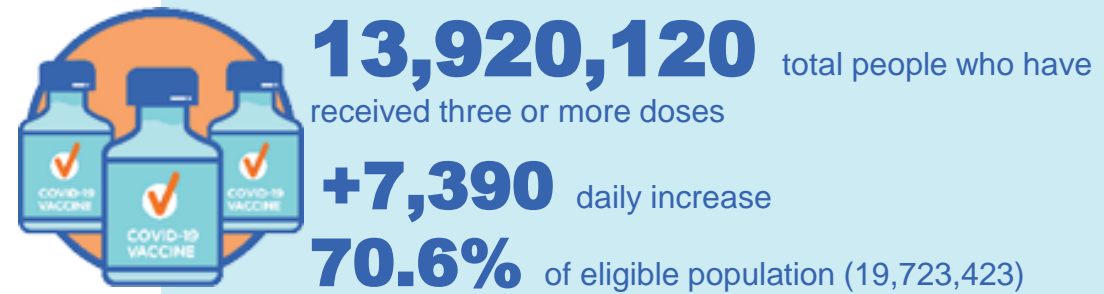
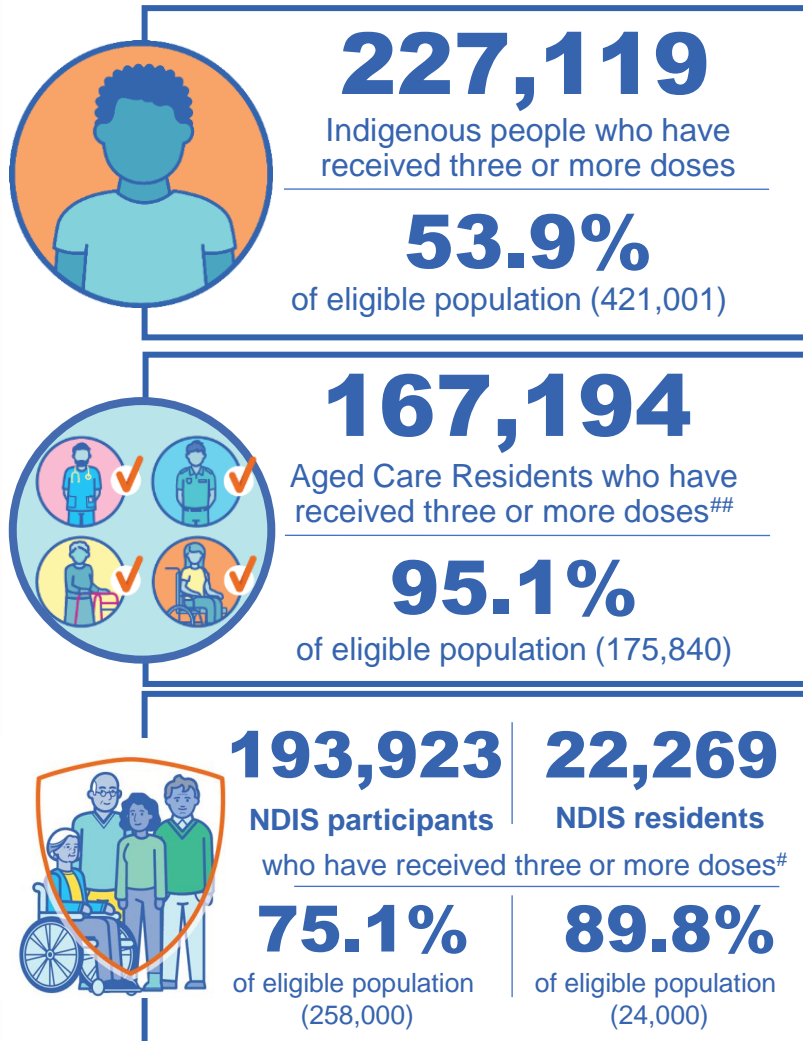


*Administration state breakdown indicates state in which a vaccine was administered

**Overall dose count includes instances of more than three doses per person in a small number of cases.

Source: Australian Immunisation Register

Booster Vaccinations



Data as at:
06 Jul 2022

	Number of People	Daily Increase	% of Eligible
NSW	4,249,506	2,648	68.2%
VIC	3,709,910	1,608	72.9%
QLD	2,413,176	1,629	63.5%
WA	1,705,534	539	82.8%
SA	997,710	728	74.2%
TAS	318,552	177	73.1%
ACT	274,714	117	79.1%
NT	131,633	17	78.1%

*People may belong to multiple groups and could be represented in the above breakdowns multiple times.
NDIS participants data as at 4 July 2022. ## Aged Care Residents data as at 6 July 2022.

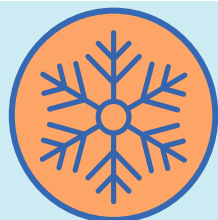
Source: Australian Immunisation Register

119,385 doses administered to persons residing in other territories or with missing residential information

Winter / Fourth Doses

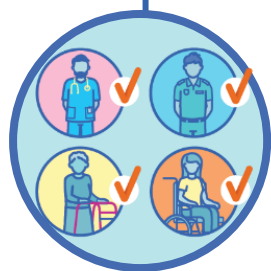
Data as at:
06 Jul 2022

Australia's COVID-19
Vaccine Roadmap



2,468,553 total people (16+) who have received four or more doses

+28,748 daily increase



2,171,005

People aged 65+ who have received
four or more doses

60.1%

of eligible population (3,610,817)



92,813

Aged Care Residents who have
received four or more doses[#]

67.0%

of eligible population (138,628)

	Number of People 16+	Daily Increase
ACT	47,167	430
NSW	798,942	9,445
NT	10,674	101
QLD	472,780	6,666
SA	201,518	2,379
TAS	69,858	975
VIC	609,467	5,960
WA	246,004	2,655

12,143 doses administered to persons
residing in other territories or with
missing residential information

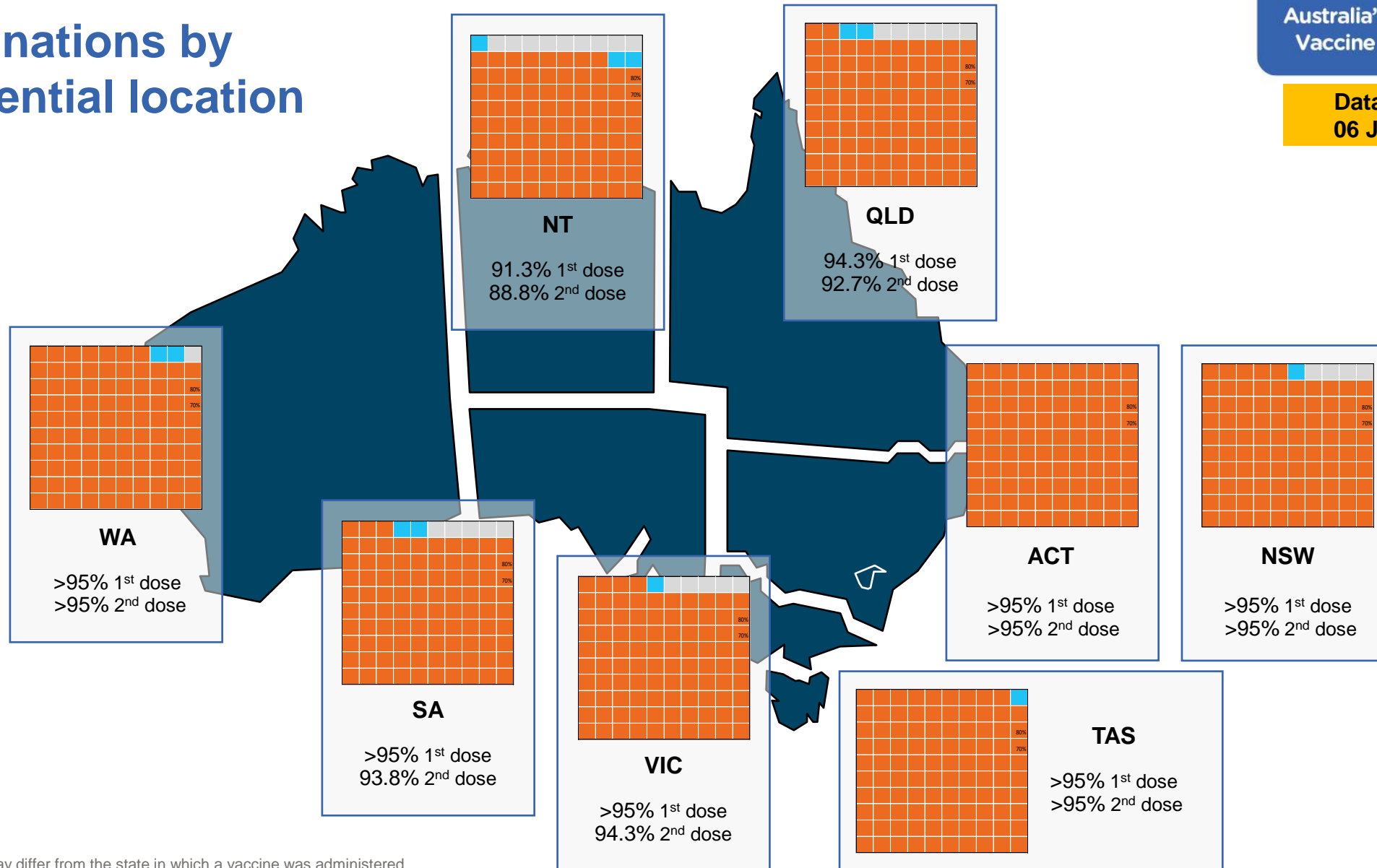
*People become eligible for a winter booster four months after their third dose. Individuals may belong to multiple groups and could be represented in the above multiple times.
[#]Aged Care Residents data as at 5 July 2022.

Source: Australian Immunisation Register

Vaccinations by residential location

Australia's COVID-19
Vaccine Roadmap

Data as at:
06 Jul 2022



*Residential state may differ from the state in which a vaccine was administered

Commonwealth and Jurisdiction vaccine doses administered

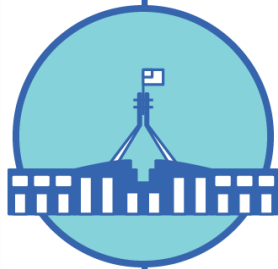
Data as at:
06 Jul 2022



60,472,169 total vaccine
doses administered nationally as at 06 July
+ 40,758 recorded in the last 24 hours



21,319,187
doses administered by state
and territory facilities
+ 3,140
recorded in the last 24 hours



39,152,982
doses administered by
commonwealth facilities
+ 37,618
recorded in the last 24 hours

37,833,709 total vaccine doses
administered in primary care settings
1,319,273 total vaccine doses
administered in aged care and disability
settings

NSW	Jurisdictions	Commonwealth
Cumulative	5,145,915	13,619,424
Daily increase	426	13,152

VIC	Jurisdictions	Commonwealth
Cumulative	6,135,886	9,715,418
Daily increase	679	7,818

QLD	Jurisdictions	Commonwealth
Cumulative	3,863,377	7,575,402
Daily increase	238	8,993

WA	Jurisdictions	Commonwealth
Cumulative	2,535,624	4,110,513
Daily increase	518	2,924

TAS	Jurisdictions	Commonwealth
Cumulative	629,965	744,133
Daily increase	138	1,100

SA	Jurisdictions	Commonwealth
Cumulative	1,849,568	2,363,666
Daily increase	609	2,715

ACT	Jurisdictions	Commonwealth
Cumulative	811,343	775,296
Daily increase	527	707

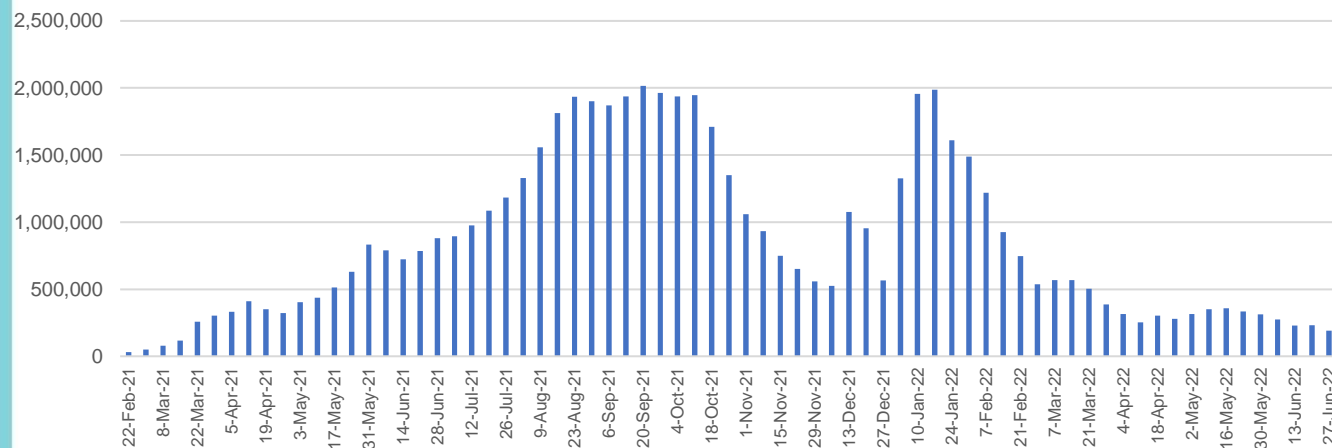
NT	Jurisdictions	Commonwealth
Cumulative	347,509	249,130
Daily increase	<10	209

Vaccine milestone charts

Data as at:
06 Jul 2022

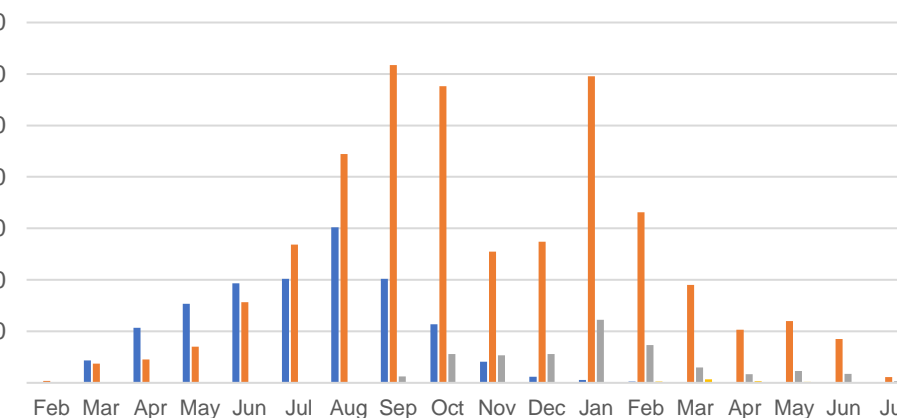
Australia's COVID-19
Vaccine Roadmap

Doses Administered by Week

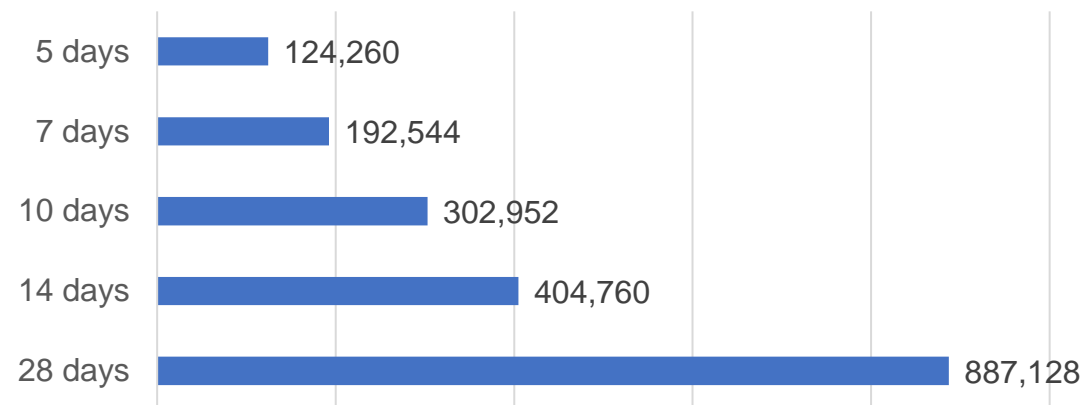


Doses by administration month and vaccine type

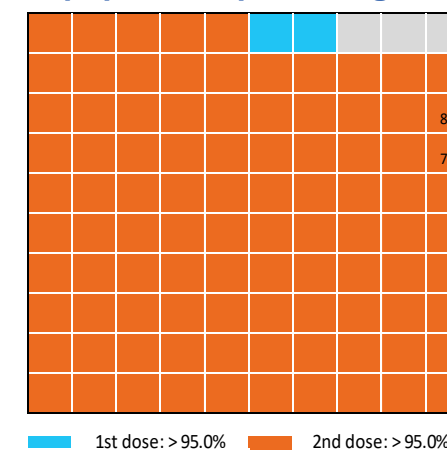
AZ - Vaxzevria Pfizer Moderna Novavax



Doses Reported



Eligible population percentage coverage



*Each square represents 1% of the national population.
Squares are filled as milestones are achieved.

*Sourced from the Australian Immunisation Register.

Doses by age and sex

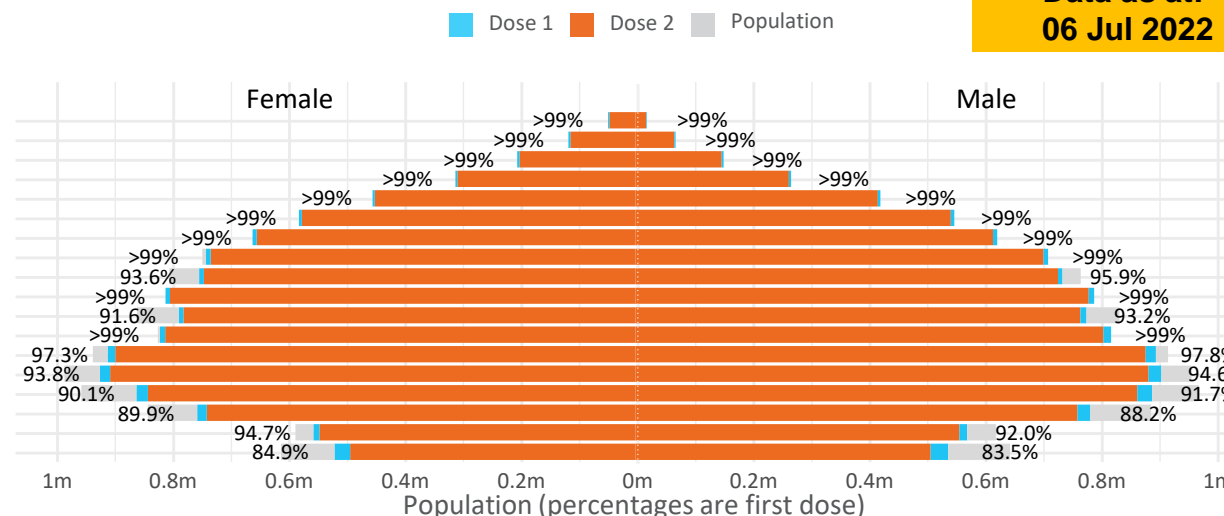
First and second doses by age and sex

Australia's COVID-19
Vaccine Roadmap

Data as at:
06 Jul 2022

Age	Dose 1	Dose 2
95+	66,211 (>99%)	62,752 (>99%)
90-94	182,959 (>99%)	177,451 (>99%)
85-89	352,506 (>99%)	345,763 (>99%)
80-84	573,514 (>99%)	566,389 (>99%)
75-79	867,648 (>99%)	859,163 (>99%)
70-74	1,119,966 (>99%)	1,108,551 (>99%)
65-69	1,272,524 (>99%)	1,257,589 (>99%)
60-64	1,439,512 (>99%)	1,422,928 (>99%)
55-59	1,475,685 (94.9%)	1,458,957 (93.8%)
50-54	1,586,372 (>99%)	1,569,411 (>99%)
45-49	1,550,391 (92.5%)	1,532,030 (91.4%)
40-44	1,627,116 (>99%)	1,603,108 (98.9%)
35-39	1,794,821 (97.8%)	1,762,566 (96.1%)
30-34	1,820,315 (94.6%)	1,778,250 (92.4%)
25-29	1,743,906 (91.5%)	1,695,911 (89.0%)
20-24	1,531,208 (89.4%)	1,490,748 (87.1%)
16-19	1,116,759 (93.4%)	1,092,682 (91.4%)
12-15	1,047,816 (84.2%)	991,495 (79.7%)

	16+	50+	12-15	5-11
Dose 1	97.58% (20,121,413 doses / 20,619,959 people)	>99% (8,936,897 doses / 8,749,703 people)	84.23% (1,047,816 doses / 1,243,990 people)	52.28% (1,190,163 doses / 2,276,638 people)
Dose 2	95.95% (19,784,249 doses / 20,619,959 people)	>99% (8,828,954 doses / 8,749,703 people)	79.70% (991,495 doses / 1,243,990 people)	39.83% (906,891 doses / 2,276,638 people)

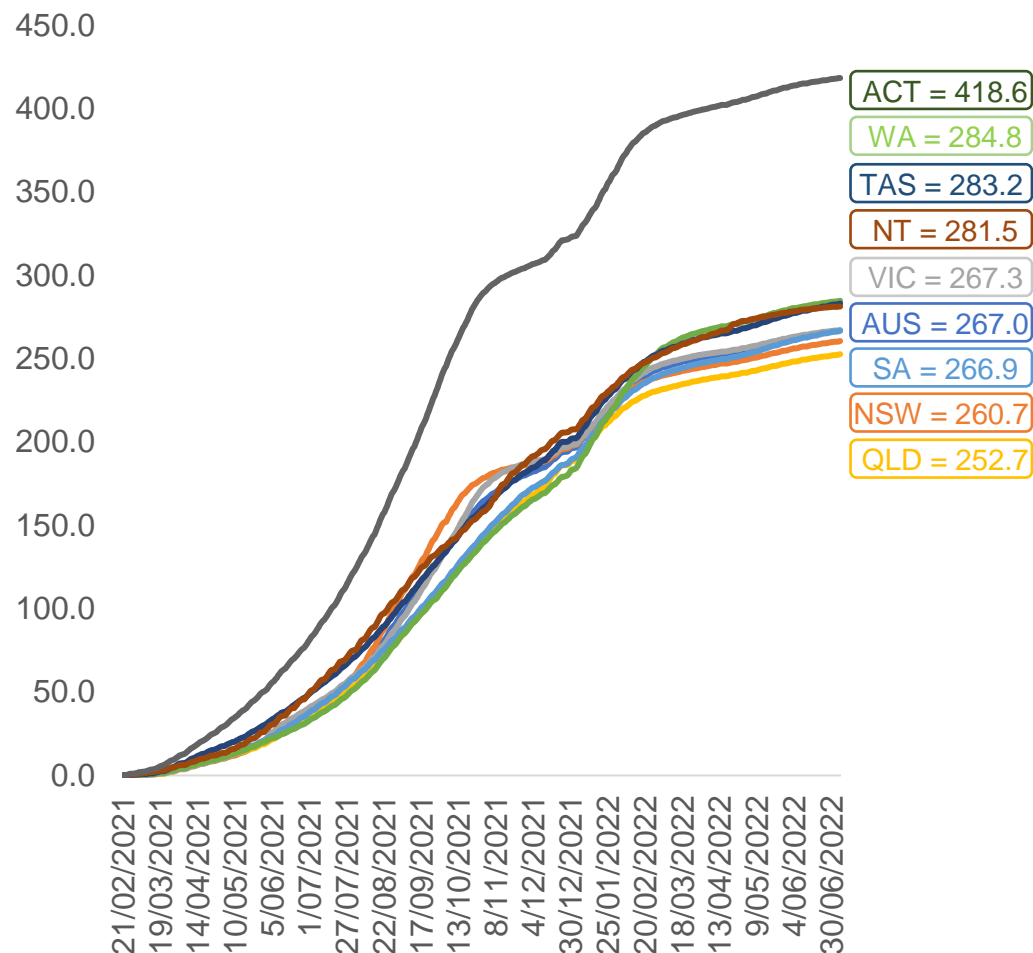


	AUS	ACT	NSW	NT	QLD	SA	TAS	VIC	WA
16 and over - dose 1	20,121,413	353,697	6,345,504	173,931	3,876,992	1,380,088	446,247	5,178,140	2,101,848
16 and over - dose 2	19,784,249	347,935	6,247,017	169,259	3,813,201	1,350,773	437,251	5,099,319	2,070,791
16 and over - population	20,619,959*	344,037	6,565,651	190,571	4,112,707	1,440,400	440,172	5,407,574	2,114,978
16 and over % with dose 1	97.58%	>99%	96.65%	91.27%	94.27%	95.81%	>99%	95.76%	>99%
16 and over % with dose 2	95.95%	>99%	95.15%	88.82%	92.72%	93.78%	>99%	94.30%	97.91%
5 to 11 - dose 1	1,190,163	31,712	355,504	13,119	206,172	83,525	28,425	324,227	139,961
5 to 11 - dose 2	906,891	27,462	277,321	8,817	150,965	63,924	23,240	247,748	102,819
5 to 11 - population	2,276,638	39,789	716,460	24,750	478,731	148,816	45,033	578,499	244,154
5 to 11 % with dose 1	52.28%	79.70%	49.62%	53.01%	43.07%	56.13%	63.12%	56.05%	57.32%
5 to 11 % with dose 2	39.83%	69.02%	38.71%	35.62%	31.53%	42.96%	51.61%	42.83%	42.11%
12 to 15 - dose 1	1,047,816	20,125	322,239	10,727	205,327	68,172	22,799	273,765	115,395
12 to 15 - dose 2	991,495	19,566	307,796	9,674	191,681	64,391	21,686	261,875	106,788
12 to 15 - population	1,243,990	19,693	390,330	13,060	270,146	82,747	26,308	308,611	132,869
12 to 15 % with dose 1	84.23%	>99%	82.56%	82.14%	76.01%	82.39%	86.66%	88.71%	86.85%
12 to 15 % with dose 2	79.70%	>99%	78.86%	74.07%	70.95%	77.82%	82.43%	84.86%	80.37%

*National population will not equal sum of listed jurisdictions due to a small number of people counted in national population residing in some 'other' territories. Sum of state doses will not add to national total as some records are unable to be geocoded to a State or Territory.
Doses sourced from Australian Immunisation Register, population from ABS ERP June 2020

Vaccinations by location

Cumulative total doses administered vs eligible state populations*

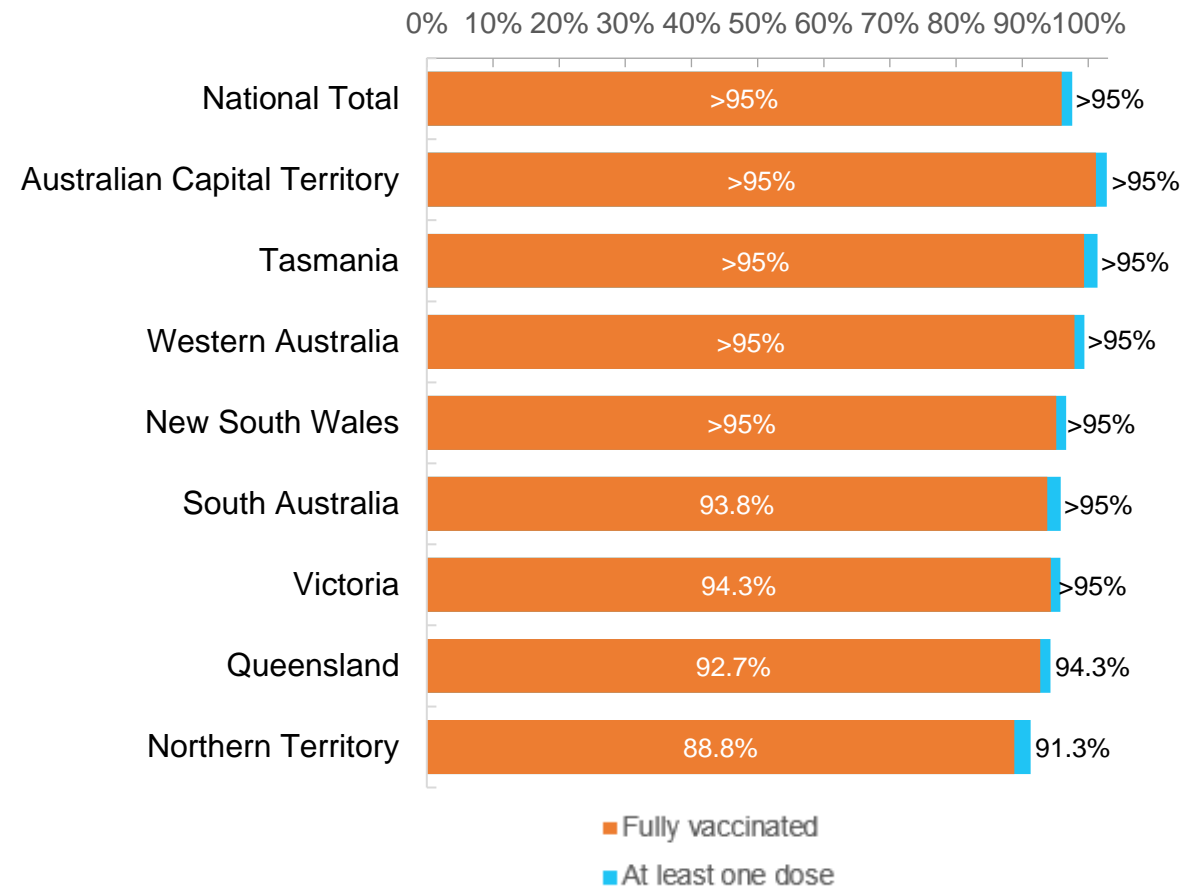


*Not an indication of percentage vaccinated, numbers will exceed 100 due to multiple doses required per person of the population. All doses are included for those aged 12 and above, and are based on vaccination provider location.

Data as at:
06 Jul 2022

Australia's COVID-19
Vaccine Roadmap

First and Second Doses by residential location



Aboriginal and Torres Strait Islander peoples

Number of people vaccinated

Data as at:
05 Jul 2022
Updated weekly

Australia's COVID-19
Vaccine Roadmap



443,710

people over the age of 16
have had at least one dose

85.0%

of people over the age of 16
have had at least one dose



425,479

people over the age of 16
are fully vaccinated

81.5%

of people over the age of 16 are
fully vaccinated



People aged 12 – 15 years

47,820

41,926

67.7%

59.4%

At least one dose

Fully vaccinated

178 Aboriginal community controlled health services (ACCHS)

0#

50

27

44

12

3

21

21

ACT

NSW

NT

QLD

SA

TAS

VIC

WA

Medicare Address State ^{##}	Individuals Dose 1	Individuals Dose 1 %	Individuals Dose 2	Individuals Dose 2 %
Australian Capital Territory	4,800	91.8%	4,680	89.5%
New South Wales	136,008	87.3%	132,965	85.4%
Northern Territory	41,498	89.7%	39,543	85.5%
Queensland	116,679	81.8%	111,358	78.1%
South Australia	20,088	80.6%	18,726	75.1%
Tasmania	13,900	88.9%	13,499	86.3%
Victoria	35,711	90.4%	34,923	88.4%
Western Australia	53,593	86.8%	49,992	81.0%
Unknown/Other Territories	21,433	70.4%	19,793	65.1%
Totals	443,710	85.0%	425,479	81.5%

Source: Australian Immunisation Register

*Identifying as Aboriginal and Torres Strait Islander is optional and the estimated population may be under reported.

**Includes all Aboriginal and Torres Strait Islander peoples who have received a vaccination, not limited to those administered in an ACCHS setting

#ACCHS in the ACT are currently operating as a Commonwealth Vaccine Clinics so not included to avoid double counting

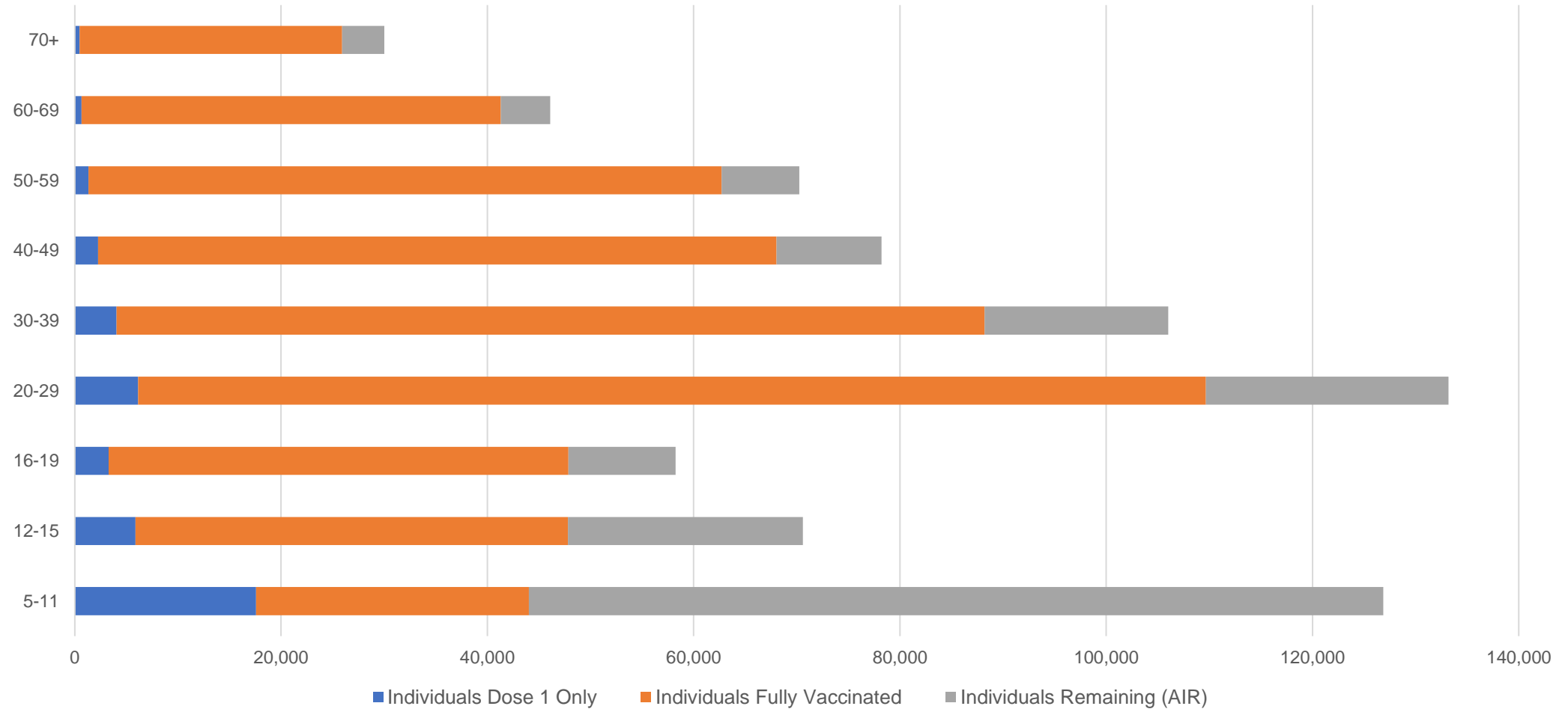
##The above table includes all identified Aboriginal and Torres Strait Islander people who are aged 16 and above by their state of residence.

Aboriginal and Torres Strait Islander peoples

Number of people vaccinated by age

Data as at:
05 Jul 2022
Updated weekly

Australia's COVID-19
Vaccine Roadmap



Source: Australian Immunisation Register

Commonwealth primary care

Data as at:
06 Jul 2022

Australia's COVID-19
Vaccine Roadmap



Primary care vaccine administration sites

5,703	128	178	3,613
GPs	CVCs	ACCHS	Pharmacies



37,833,709 total vaccine doses administered
primary care settings as at 06 July
+ 37,223 recorded in the last 24 hours

Primary care vaccinations by provider type

	Doses administered	Daily increase	7 day increase
General Practice* includes other Commonwealth	30,204,147	23,339	112,104
Pharmacy	7,629,562	13,884	62,003

NSW
13,045,012
(+12,956 daily increase)

VIC
9,383,047
(+7,961 daily increase)

QLD
7,291,048
(+8,878 daily increase)

WA
3,970,068
(+3,099 daily increase)

TAS
723,121
(+1,103 daily increase)

SA
2,282,308
(+2,829 daily increase)

ACT
598,701
(+647 daily increase)

NT
223,064
(+127 daily increase)

317,340

doses administered to persons
residing in other territories or with
missing residential information

*General practice includes Commonwealth Vaccination Clinics, Aboriginal Community Health Centres, Royal Flying Doctor Service and other Commonwealth vaccination facilities

Source: Australian Immunisation Register

Data as at:
06 Jul 2022

Commonwealth aged care and disability doses administered



1,319,273 (+ 395 last 24 hours)

Total vaccine doses administered in aged care and disability facilities as at 06 July

Number of doses administered as part of the Commonwealth aged and disability care rollout

NSW
572,696
(+128 daily increase)

VIC
247,798
(+54 daily increase)

QLD
210,285
(+138 daily increase)

WA
112,665
(+40 daily increase)

TAS
23,755
(<10 daily increase)

SA
86,441
(+15 daily increase)

ACT
17,946
(<10 daily increase)

NT
7,708
(<10 daily increase)

39,979

doses administered to persons
residing in other territories or with
missing residential information

*Sourced from the Australian Immunisation Register. Includes all persons vaccinated at participating residential aged care, disability and related industry settings.

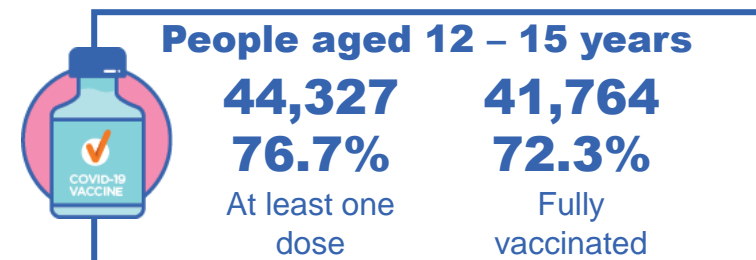
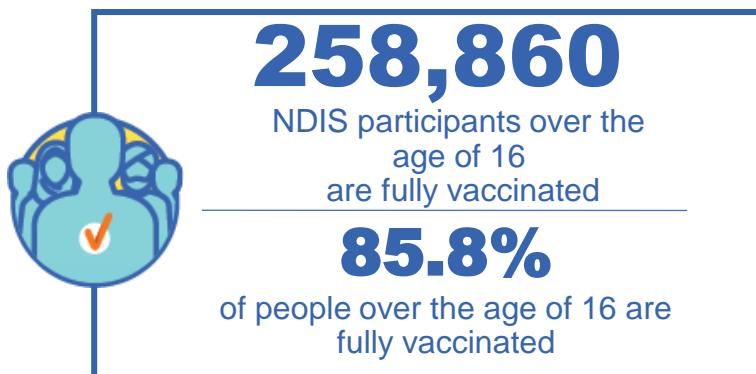
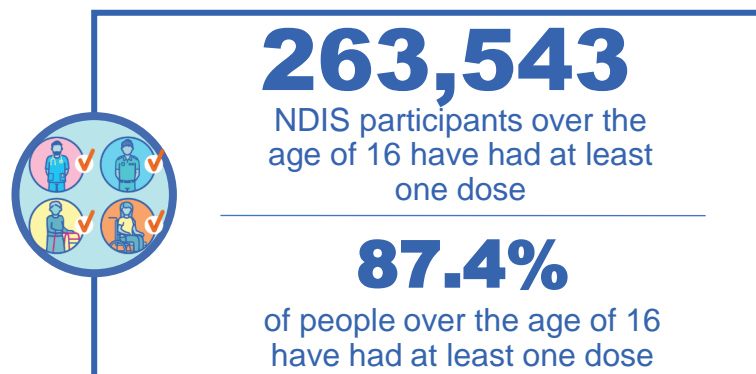
**State level breakdown indicates the residential location and may not align to the state in which the vaccination occurred.

Source: Australian Immunisation Register

National Disability Insurance Scheme (NDIS) reported vaccinations

Data as at:
30 June 2022
Updated weekly

Australia's COVID-19
Vaccine Roadmap



NDIS participant vaccinations

	People aged 16+ with at least one dose	People aged 16+ fully vaccinated	% People aged 16+ with at least one dose	% People aged 16+ fully vaccinated
ACT	4,957	4,893	89.3%	88.2%
NSW	80,634	79,372	87.8%	86.4%
NT	2,298	2,227	78.7%	76.3%
QLD	52,303	51,315	85.8%	84.2%
SA	21,582	21,083	85.2%	83.2%
TAS	6,583	6,430	87.6%	85.6%
VIC	69,988	68,840	88.5%	87.1%
WA	25,198	24,700	88.8%	87.0%
National	263,543	258,860	87.4%	85.8%

Source: Linkage between National Disability Insurance Agency data and the Australian Immunisation Register. Total NDIS participant numbers as at 30 May. Australian Immunisation Register data as at 29 June. Includes all participants regardless of residence type.

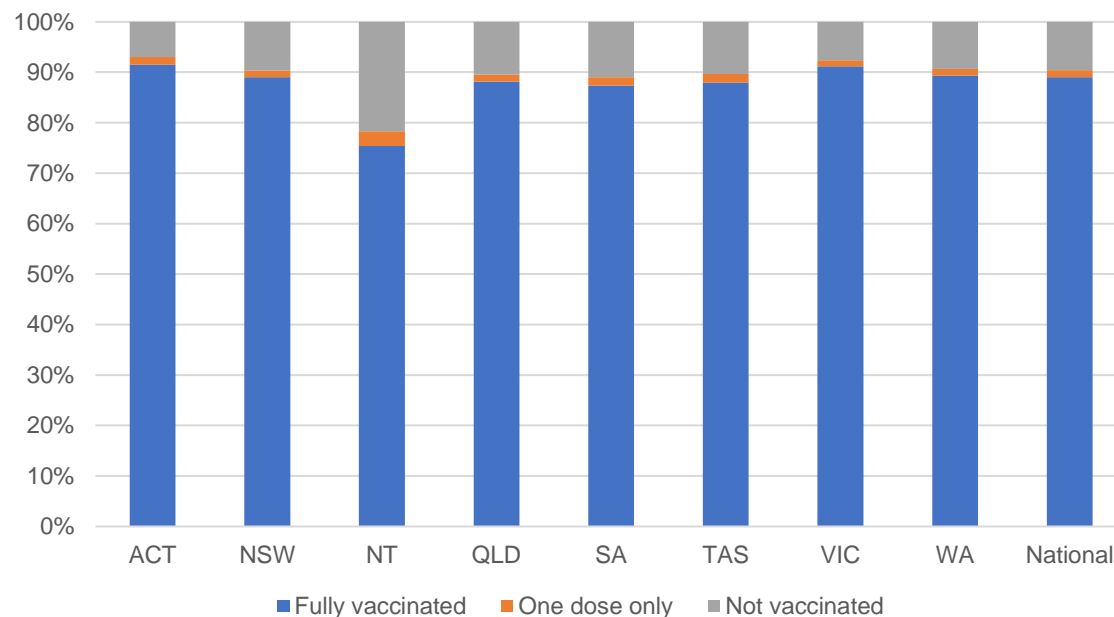
National Disability Insurance Scheme (NDIS) reported vaccinations

Data as at:
30 June 2022
Updated weekly

Australia's COVID-19
Vaccine Roadmap

NATIONAL	Total people with at least one dose	People fully vaccinated	Total number of individuals in cohort	% People with at least one dose	% People fully vaccinated
NDIS participants living in disability accommodation	21,298	20,973	23,469	90.7%	89.4%

NDIS participants in disability and aged care accommodation



Source: Linkage between National Disability Insurance Agency data and the Australian Immunisation Register. Includes participants residing in disability accommodation only.

Source: Total NDIS participant numbers as at 30 May. Participant data as at 29 June. Australian Immunisation Register data as at 29 June. Worker data as at 30 June.

NDIS workforce vaccinations

	NDIS workers with at least one dose	NDIS workers fully vaccinated	% NDIS workers with at least one dose	% NDIS workers fully vaccinated
NSW	127,532	122,353	98.2%	94.3%
VIC	118,277	114,994	98.5%	95.7%
QLD	71,506	70,666	97.9%	96.7%
WA	34,529	33,079	99.0%	94.8%
SA	35,855	33,971	98.5%	93.3%
TAS	12,437	12,025	98.8%	95.5%
ACT	12,329	12,302	99.8%	99.6%
NT	3,959	3,809	99.6%	95.8%
TOTAL	416,424	403,199	98.4%	95.3%

Source: the NDIS Commission has established a requirement for registered NDIS providers who provide intensive disability support services to report on the vaccination status of workers they employ, or otherwise engage, to deliver NDIS-funded supports and services, and who are required to be vaccinated in accordance with in-force state and territory public health orders. The statistics reflect data reported to the NDIS Commission by registered NDIS providers and should be considered indicative and subject to change

Note: Some registered NDIS providers are yet to report on the vaccination status of their workforce. The NDIS Commission is working with those providers around reporting requirements.

Remaining workers not included include those exempt from vaccination requirements, workers whose vaccination status is not yet verified by the provider (such as workers on leave) and provider reporting anomalies.

Residential aged care vaccination rollout

Residential aged care facilities status

176,490

People fully vaccinated

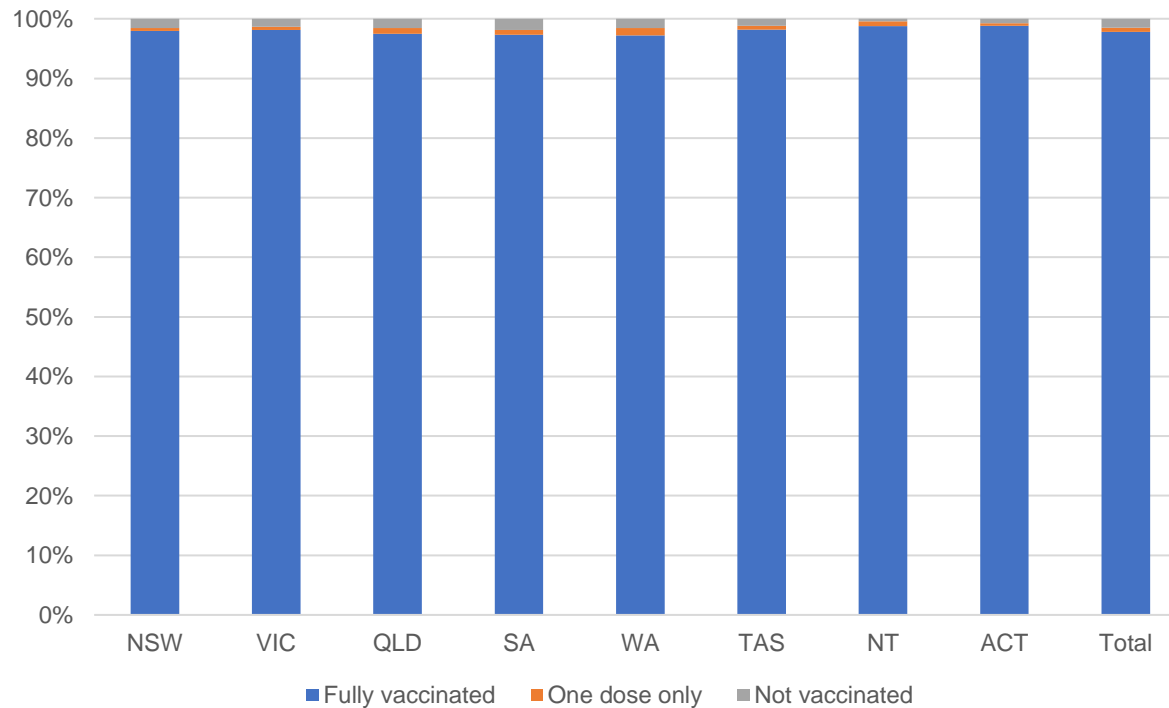
177,740

People with at least one dose

Australia's COVID-19 Vaccine Roadmap

Data as at:
30 June 2022
Updated weekly

Aged care resident vaccinations



Aged care worker vaccinations

Jurisdictions	Total workers with at least one dose	Workers fully vaccinated	% Workers with at least one dose	% Workers fully vaccinated
NSW	77,570	77,442	99.9%	99.7%
VIC	71,156	71,155	100.0%	100.0%
QLD	48,482	48,481	99.9%	99.8%
SA	27,012	27,005	100.0%	100.0%
WA	24,639	24,638	100.0%	100.0%
TAS	7,534	7,534	100.0%	100.0%
NT	920	920	100.0%	100.0%
ACT	2,953	2,953	100.0%	100.0%
Total	260,266	260,128	99.9%	99.9%

Source: Residential aged care provider self-reported COVID-19 vaccination information

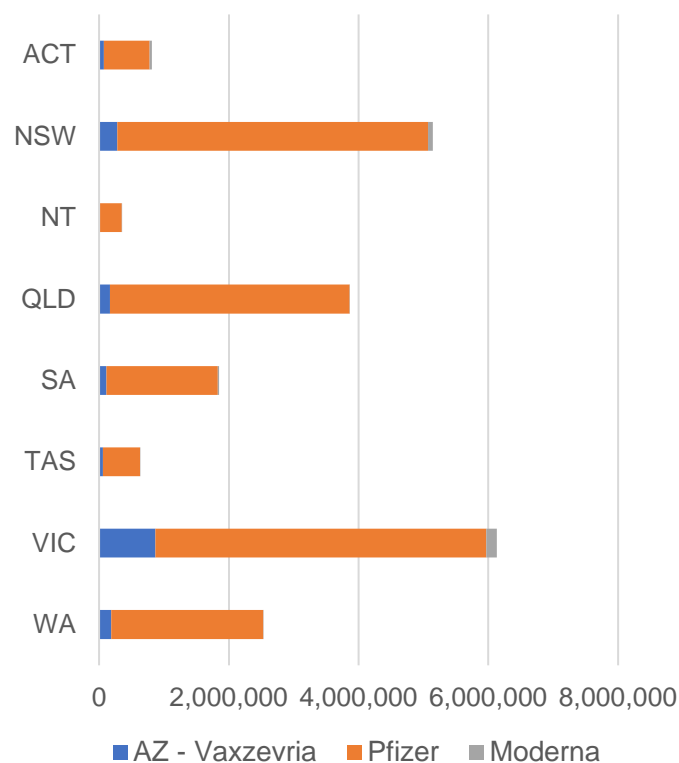
*Status updates are provided by facilities at least once per week. Reporting is updated Monday to Friday to encompass different facility updates being made on different days.

Data is sourced directly from Aged Care Service Providers and is not drawn or closely aligned with data from AIR due to inconsistencies and potential lags in uploading of records.

Data as at:
06 Jul 2022

Jurisdiction administered

Total vaccine doses administered in State and Territory clinics as at 06 July



21,319,187 total vaccine doses administered
in State and Territory clinics as at 06 July
+ **3,140** recorded in the last 24 hours
+ **16,221** recorded in the last 7 days

NSW
5,145,915
(+426 daily
increase)

VIC
6,135,886
(+679 daily
increase)

QLD
3,863,377
(+238 daily
increase)

WA
2,535,624
(+518 daily
increase)

TAS
629,965
(+138 daily
increase)

SA
1,849,568
(+609 daily
increase)

ACT
811,343
(+527 daily
increase)

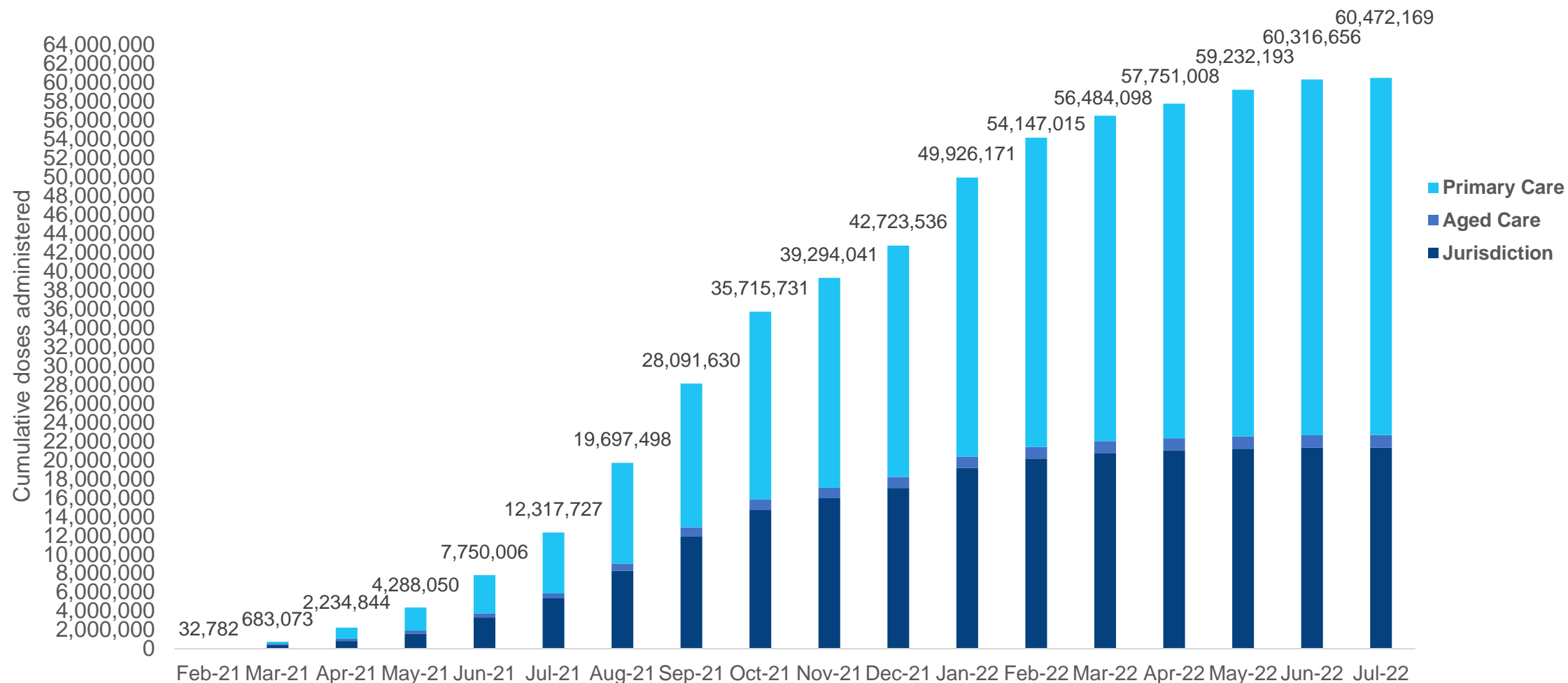
NT
347,509
(<10 daily
increase)

*Sourced from the Australian Immunisation Register. Numbers are calculated as difference in daily cumulative reported numbers to allow for historical corrections.

Source: Australian Immunisation Register

Cumulative doses administered by channel

Data as at:
06 Jul 2022

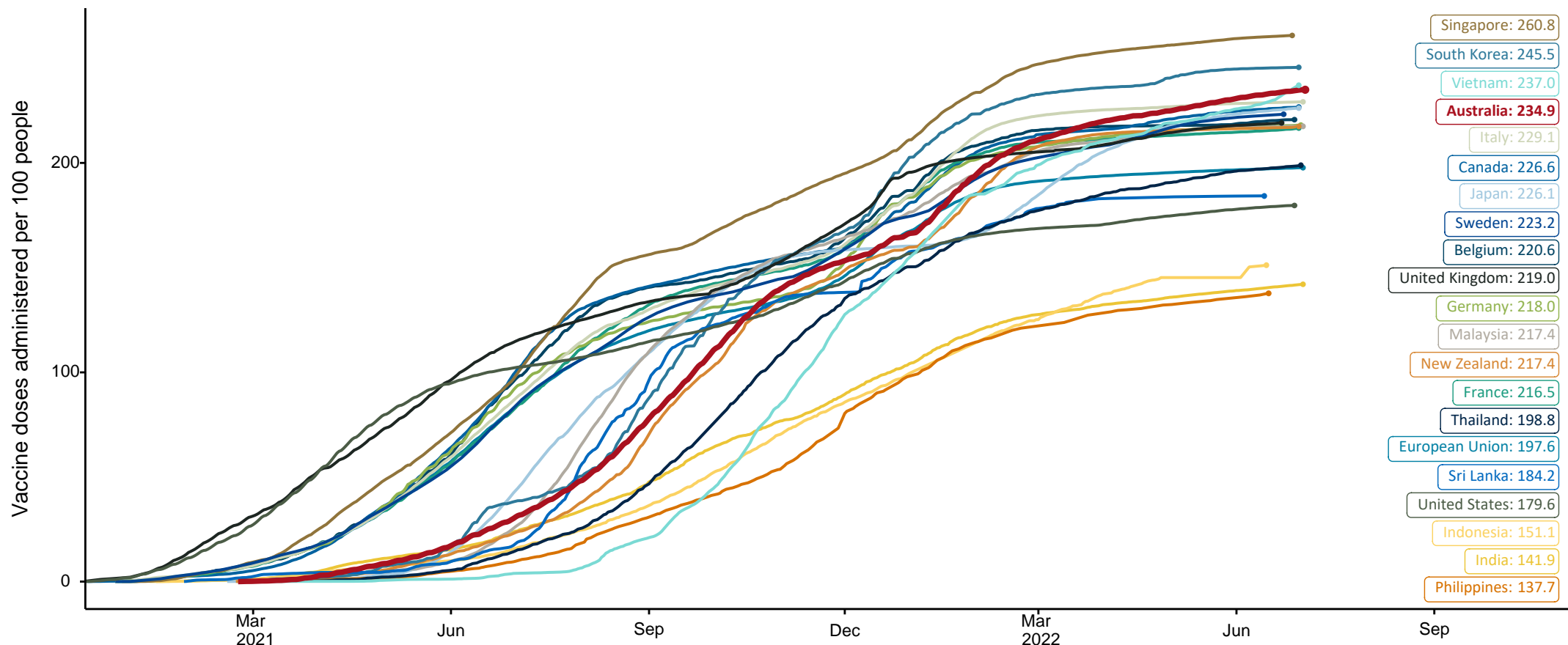


Source: Australian Immunisation Register

COVID-19 vaccine doses per 100, Australia and select countries

Data as at:
03 July 2022
Updated weekly

Australia's COVID-19
Vaccine Roadmap



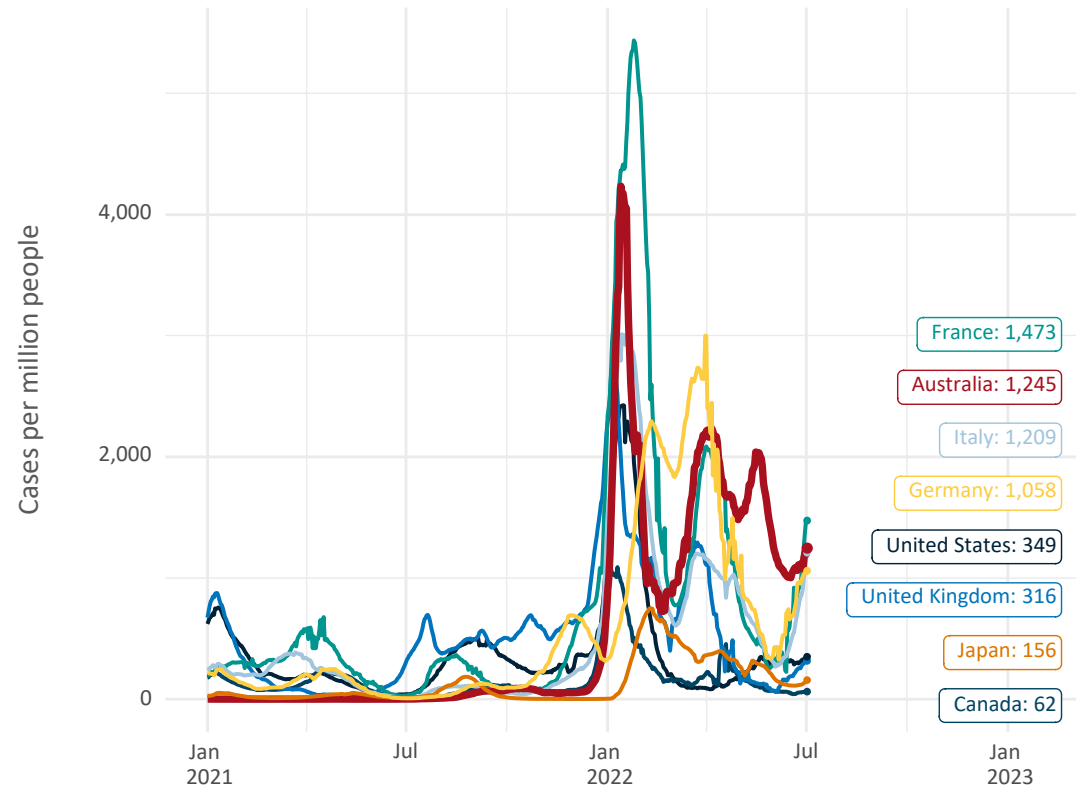
Note: From 11 January 2022, data for Australia includes all doses administered to people 5 and over. Prior to 11 January, data was for 12 and over.
Source: Department of Health (Australia), Our World in Data (international)
Latest data: 03 July

International data – COVID-19

Australia's COVID-19
Vaccine Roadmap

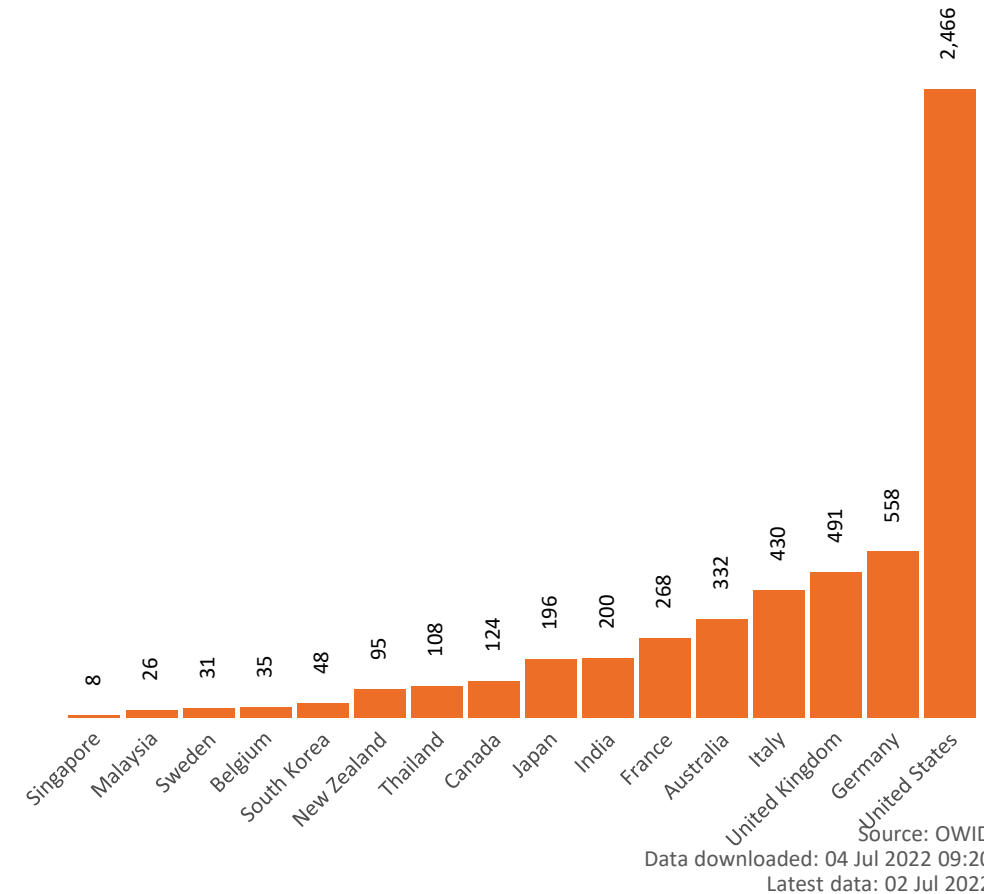
Data as at:
03 July 2022
Updated weekly

New daily cases per million since 2021, Australia and G7 countries
Smoothed - 7 day average



Source: OWID
Data downloaded: 04 Jul 2022 09:20
Latest data: 02 Jul 2022

COVID-19 deaths in past 7 days - Australia and select countries



Source: OWID
Data downloaded: 04 Jul 2022 09:20
Latest data: 02 Jul 2022