



Australian Government
Operation COVID Shield

COVID-19 Vaccine Roll-out

06 July 2022

Data as at:
05 Jul 2022

Total vaccine doses



60,431,411 total vaccine
doses administered nationally as at 05 July

+38,762 recorded in the last 24 hours



20,119,740

people have had at least one
dose

>95%

of people over the age of 16
have had at least one dose



19,782,691

people are fully vaccinated

>95%

of people over the age of 16 are
fully vaccinated



13,912,730

people over the age of 16
who have received three or
more doses

NSW
18,751,761
(+13,222 daily
increase)

VIC
15,842,807
(+8,143 daily
increase)

QLD
11,429,548
(+8,595 daily
increase)

WA
6,642,695
(+3,136 daily
increase)

TAS
1,372,860
(+1,091 daily
increase)

SA
4,209,910
(+2,929 daily
increase)

ACT
1,585,405
(+1,360 daily
increase)

NT
596,425
(+286 daily
increase)

*Administration state breakdown indicates state in which a vaccine was administered

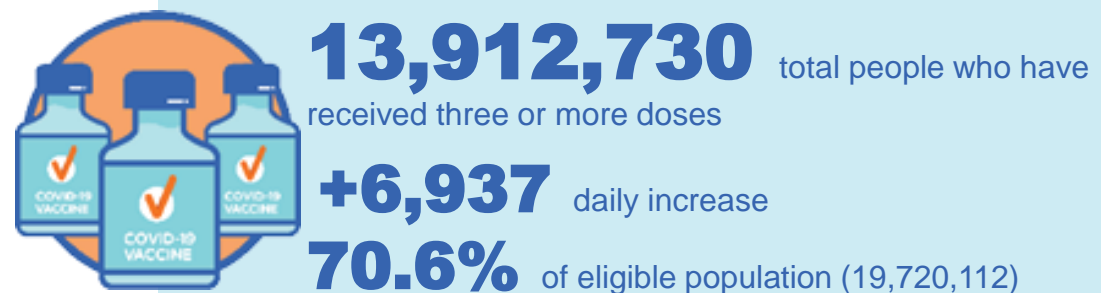
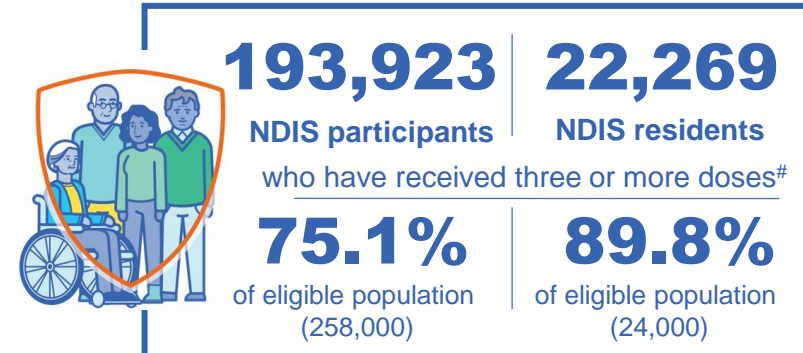
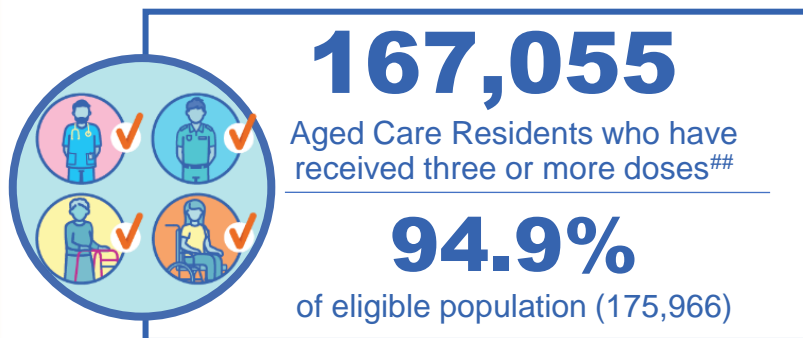
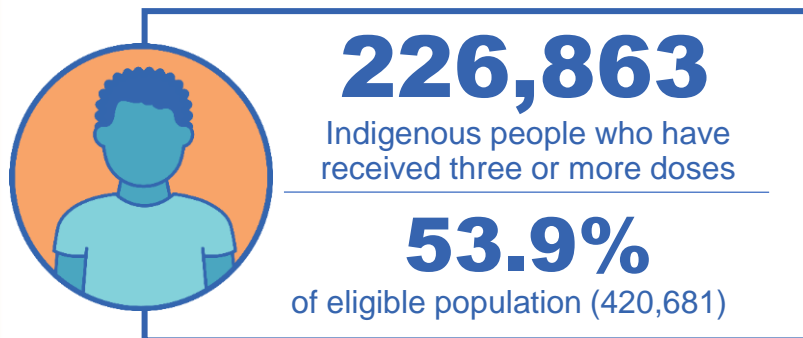
**Overall dose count includes instances of more than three doses per person in a small number of cases.

Source: Australian Immunisation Register

Booster Vaccinations

Australia's COVID-19
Vaccine Roadmap

Data as at:
05 Jul 2022



	Number of People	Daily Increase	% of Eligible
NSW	4,246,858	2,551	68.1%
VIC	3,708,302	1,553	72.9%
QLD	2,411,547	1,507	63.5%
WA	1,704,995	552	82.8%
SA	996,982	646	74.2%
TAS	318,375	149	73.1%
ACT	274,597	110	79.0%
NT	131,616	50	78.1%

*People may belong to multiple groups and could be represented in the above breakdowns multiple times.
NDIS participants data as at 04 July 2022. ## Aged Care Residents data as at 05 July 2022.

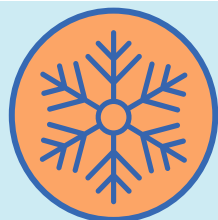
Source: Australian Immunisation Register

119,458 doses administered to persons
residing in other territories or with
missing residential information

Winter / Fourth Doses

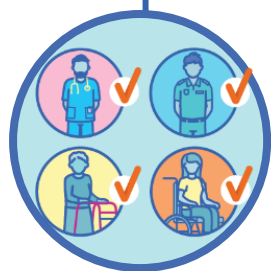
Data as at:
05 Jul 2022

Australia's COVID-19
Vaccine Roadmap



2,439,805 total people (16+) who have received four or more doses

+27,179 daily increase



2,147,327

People aged 65+ who have received four or more doses

59.5%

of eligible population (3,608,861)



92,113

Aged Care Residents who have received four or more doses[#]

66.6%

of eligible population (138,388)

	Number of People 16+	Daily Increase
ACT	46,737	439
NSW	789,497	9,066
NT	10,573	158
QLD	466,114	6,269
SA	199,139	2,109
TAS	68,883	854
VIC	603,507	5,776
WA	243,349	2,366

12,006 doses administered to persons residing in other territories or with missing residential information

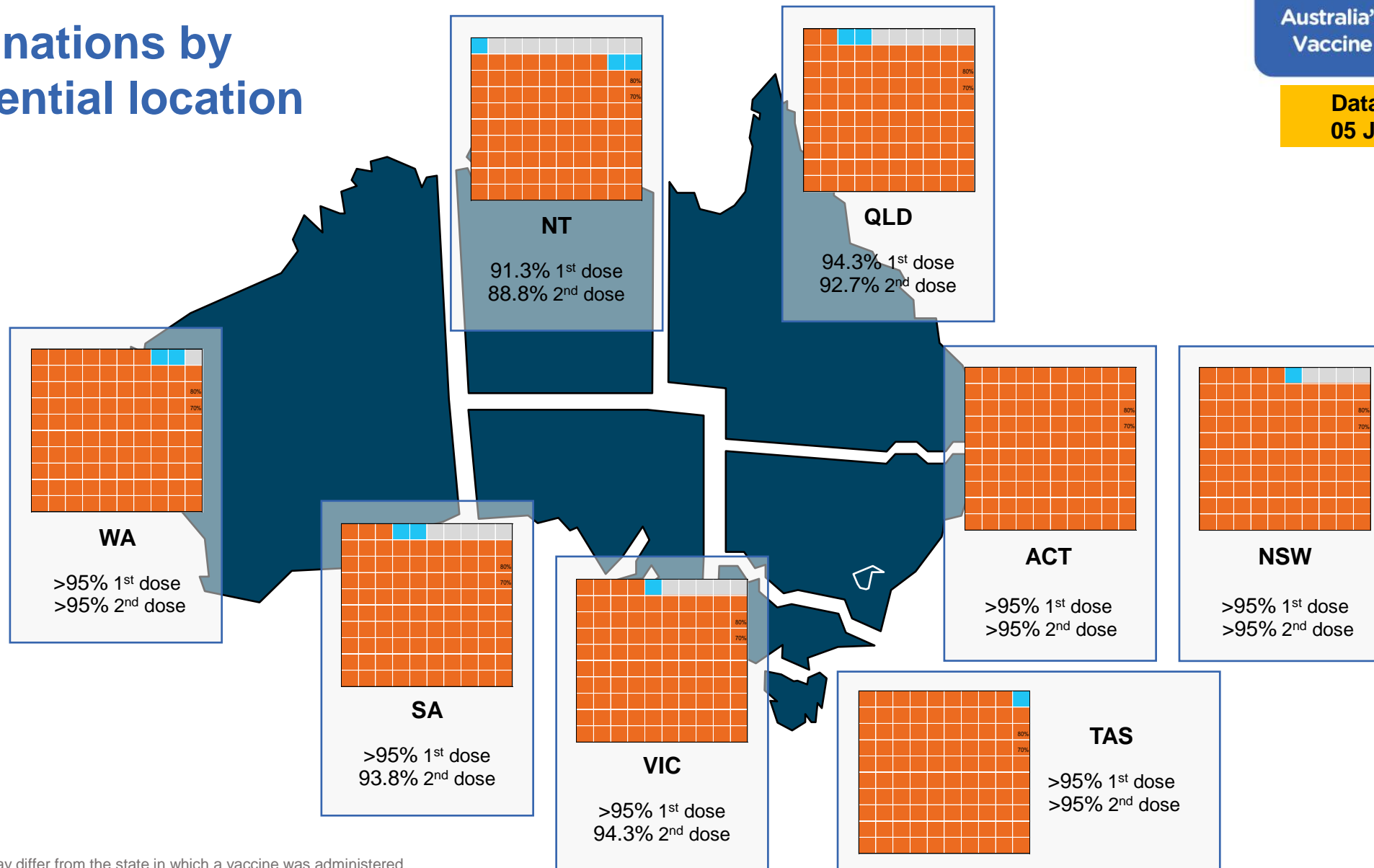
*People become eligible for a winter booster four months after their third dose. Individuals may belong to multiple groups and could be represented in the above multiple times.
[#]Aged Care Residents data as at 04 July 2022.

Source: Australian Immunisation Register

Vaccinations by residential location

Australia's COVID-19
Vaccine Roadmap

Data as at:
05 Jul 2022



*Residential state may differ from the state in which a vaccine was administered

Commonwealth and Jurisdiction vaccine doses administered

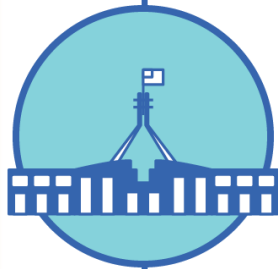
Data as at:
05 Jul 2022



60,431,411 total vaccine
doses administered nationally as at 05 July
+ 38,762 recorded in the last 24 hours



21,316,047
doses administered by state
and territory facilities
+ 3,738
recorded in the last 24 hours



39,115,364
doses administered by
commonwealth facilities
+ 35,024
recorded in the last 24 hours

37,796,486 total vaccine doses
administered in primary care settings
1,318,878 total vaccine doses
administered in aged care and disability
settings

NSW	Jurisdictions	Commonwealth
Cumulative	5,145,489	13,606,272
Daily increase	1,497	11,725

VIC	Jurisdictions	Commonwealth
Cumulative	6,135,207	9,707,600
Daily increase	519	7,624

QLD	Jurisdictions	Commonwealth
Cumulative	3,863,139	7,566,409
Daily increase	257	8,338

WA	Jurisdictions	Commonwealth
Cumulative	2,535,106	4,107,589
Daily increase	485	2,651

TAS	Jurisdictions	Commonwealth
Cumulative	629,827	743,033
Daily increase	112	979

SA	Jurisdictions	Commonwealth
Cumulative	1,848,959	2,360,951
Daily increase	258	2,671

ACT	Jurisdictions	Commonwealth
Cumulative	810,816	774,589
Daily increase	593	767

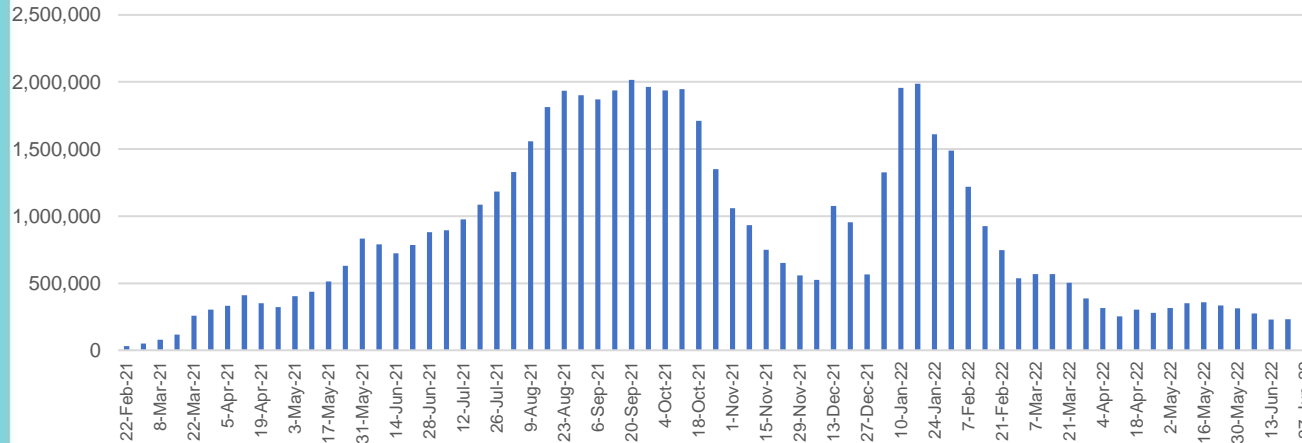
NT	Jurisdictions	Commonwealth
Cumulative	347,504	248,921
Daily increase	17	269

Vaccine milestone charts

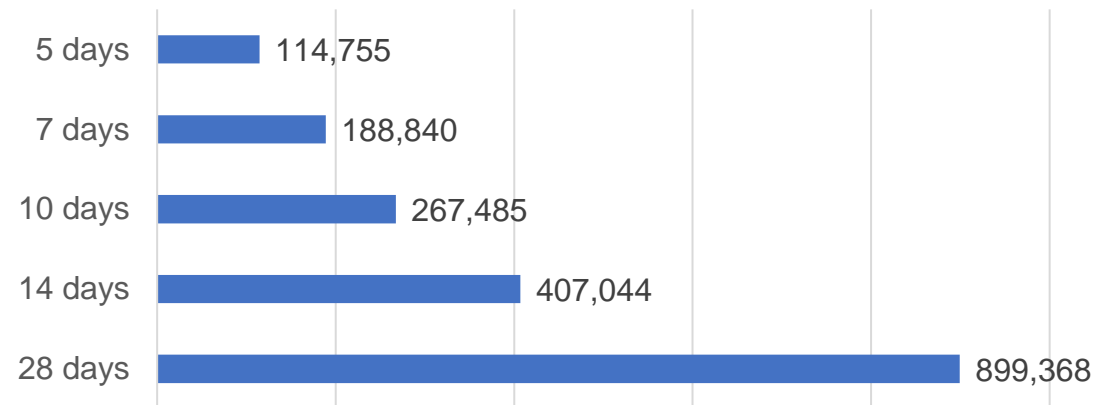
Data as at:
05 Jul 2022

Australia's COVID-19
Vaccine Roadmap

Doses Administered by Week

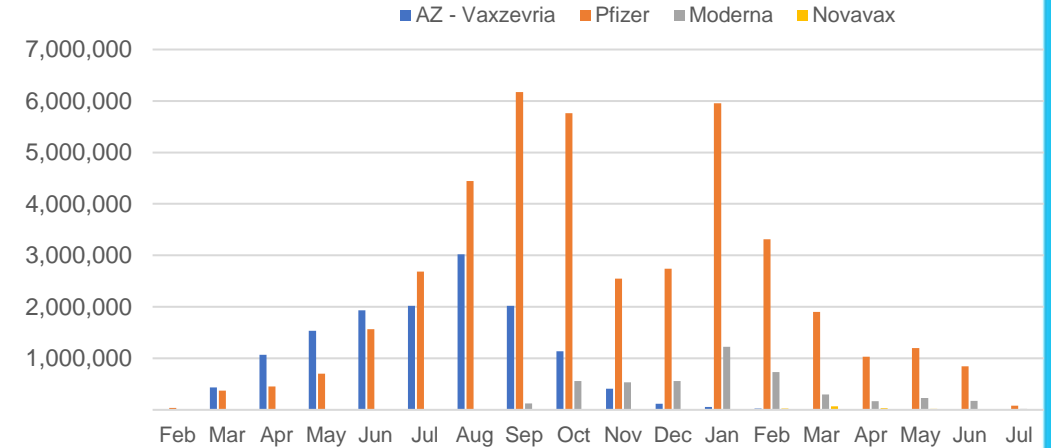


Doses Reported

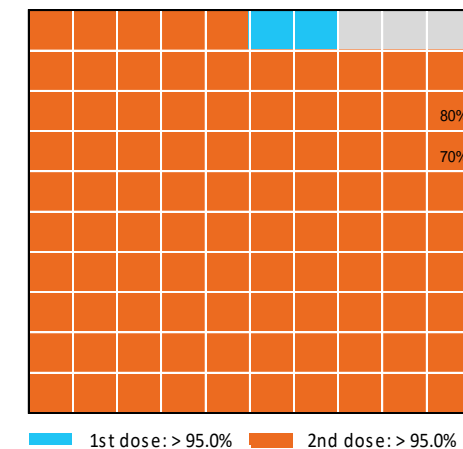


*Sourced from the Australian Immunisation Register.

Doses by administration month and vaccine type



Eligible population percentage coverage



*Each square represents 1% of the national population.
Squares are filled as milestones are achieved.

Doses by age and sex

First and second doses by age and sex

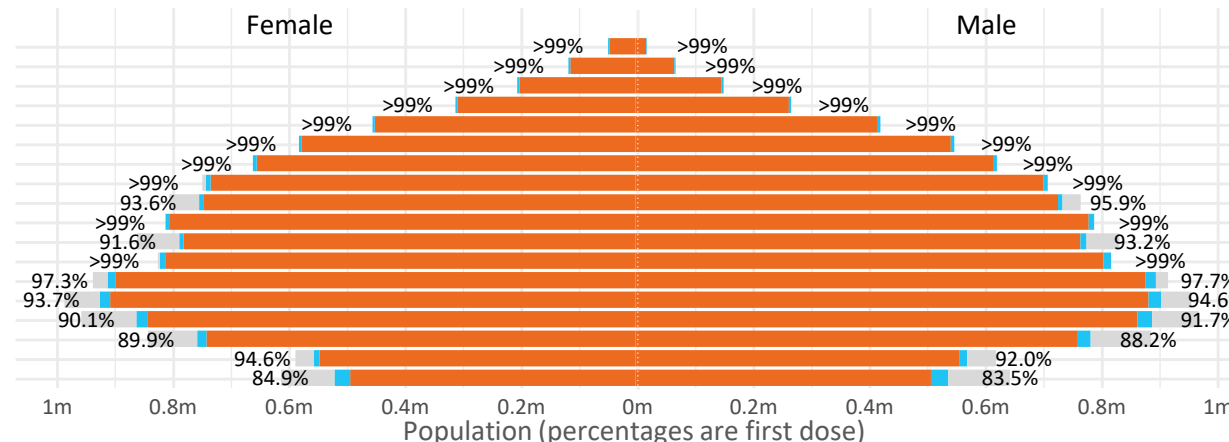
Australia's COVID-19
Vaccine Roadmap

Data as at:
05 Jul 2022

Age	Dose 1	Dose 2
95+	66,143 (>99%)	62,682 (>99%)
90-94	182,878 (>99%)	177,373 (>99%)
85-89	352,370 (>99%)	345,629 (>99%)
80-84	573,384 (>99%)	566,260 (>99%)
75-79	867,408 (>99%)	858,928 (>99%)
70-74	1,119,893 (>99%)	1,108,486 (>99%)
65-69	1,272,356 (>99%)	1,257,447 (>99%)
60-64	1,439,344 (>99%)	1,422,783 (>99%)
55-59	1,475,649 (94.9%)	1,458,939 (93.8%)
50-54	1,586,305 (>99%)	1,569,328 (>99%)
45-49	1,550,238 (92.5%)	1,531,872 (91.4%)
40-44	1,627,031 (>99%)	1,603,038 (98.9%)
35-39	1,794,687 (97.8%)	1,762,426 (96.0%)
30-34	1,820,272 (94.6%)	1,778,194 (92.4%)
25-29	1,743,981 (91.5%)	1,695,994 (89.0%)
20-24	1,531,457 (89.4%)	1,491,023 (87.1%)
16-19	1,116,344 (93.4%)	1,092,289 (91.3%)
12-15	1,048,035 (84.2%)	991,646 (79.7%)

	16+	50+	12-15	5-11
Dose 1	97.57% (20,119,740 doses / 20,619,959 people)	>99% (8,935,730 doses / 8,749,703 people)	84.25% (1,048,035 doses / 1,243,990 people)	52.27% (1,190,093 doses / 2,276,638 people)
Dose 2	95.94% (19,782,691 doses / 20,619,959 people)	>99% (8,827,855 doses / 8,749,703 people)	79.71% (991,646 doses / 1,243,990 people)	39.78% (905,716 doses / 2,276,638 people)

Dose 1 Dose 2 Population

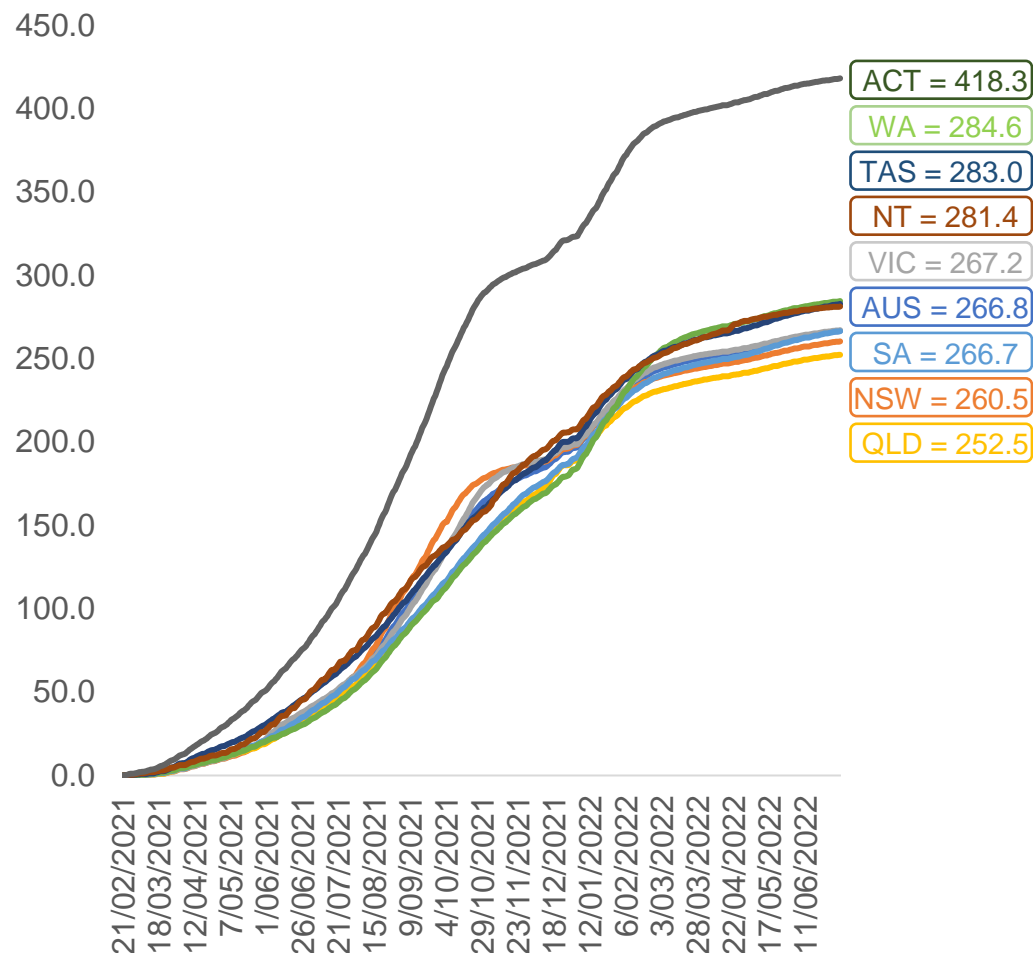


	AUS	ACT	NSW	NT	QLD	SA	TAS	VIC	WA
16 and over - dose 1	20,119,740	353,695	6,344,935	173,958	3,876,466	1,379,910	446,204	5,177,628	2,101,596
16 and over - dose 2	19,782,691	347,940	6,246,519	169,286	3,812,675	1,350,596	437,205	5,098,855	2,070,546
16 and over - population	20,619,959*	344,037	6,565,651	190,571	4,112,707	1,440,400	440,172	5,407,574	2,114,978
16 and over % with dose 1	97.57%	>99%	96.64%	91.28%	94.26%	95.80%	>99%	95.75%	>99%
16 and over % with dose 2	95.94%	>99%	95.14%	88.83%	92.70%	93.77%	>99%	94.29%	97.90%
5 to 11 - dose 1	1,190,093	31,709	355,459	13,126	206,142	83,528	28,432	324,174	139,990
5 to 11 - dose 2	905,716	27,423	276,904	8,813	150,753	63,884	23,223	247,376	102,743
5 to 11 - population	2,276,638	39,789	716,460	24,750	478,731	148,816	45,033	578,499	244,154
5 to 11 % with dose 1	52.27%	79.69%	49.61%	53.03%	43.06%	56.13%	63.14%	56.04%	57.34%
5 to 11 % with dose 2	39.78%	68.92%	38.65%	35.61%	31.49%	42.93%	51.57%	42.76%	42.08%
12 to 15 - dose 1	1,048,035	20,125	322,322	10,735	205,369	68,169	22,814	273,810	115,382
12 to 15 - dose 2	991,646	19,563	307,840	9,680	191,715	64,386	21,703	261,907	106,778
12 to 15 - population	1,243,990	19,693	390,330	13,060	270,146	82,747	26,308	308,611	132,869
12 to 15 % with dose 1	84.25%	>99%	82.58%	82.20%	76.02%	82.38%	86.72%	88.72%	86.84%
12 to 15 % with dose 2	79.71%	>99%	78.87%	74.12%	70.97%	77.81%	82.50%	84.87%	80.36%

*National population will not equal sum of listed jurisdictions due to a small number of people counted in national population residing in some 'other' territories. Sum of state doses will not add to national total as some records are unable to be geocoded to a State or Territory.
Doses sourced from Australian Immunisation Register, population from ABS ERP June 2020

Vaccinations by location

Cumulative total doses administered vs eligible state populations*

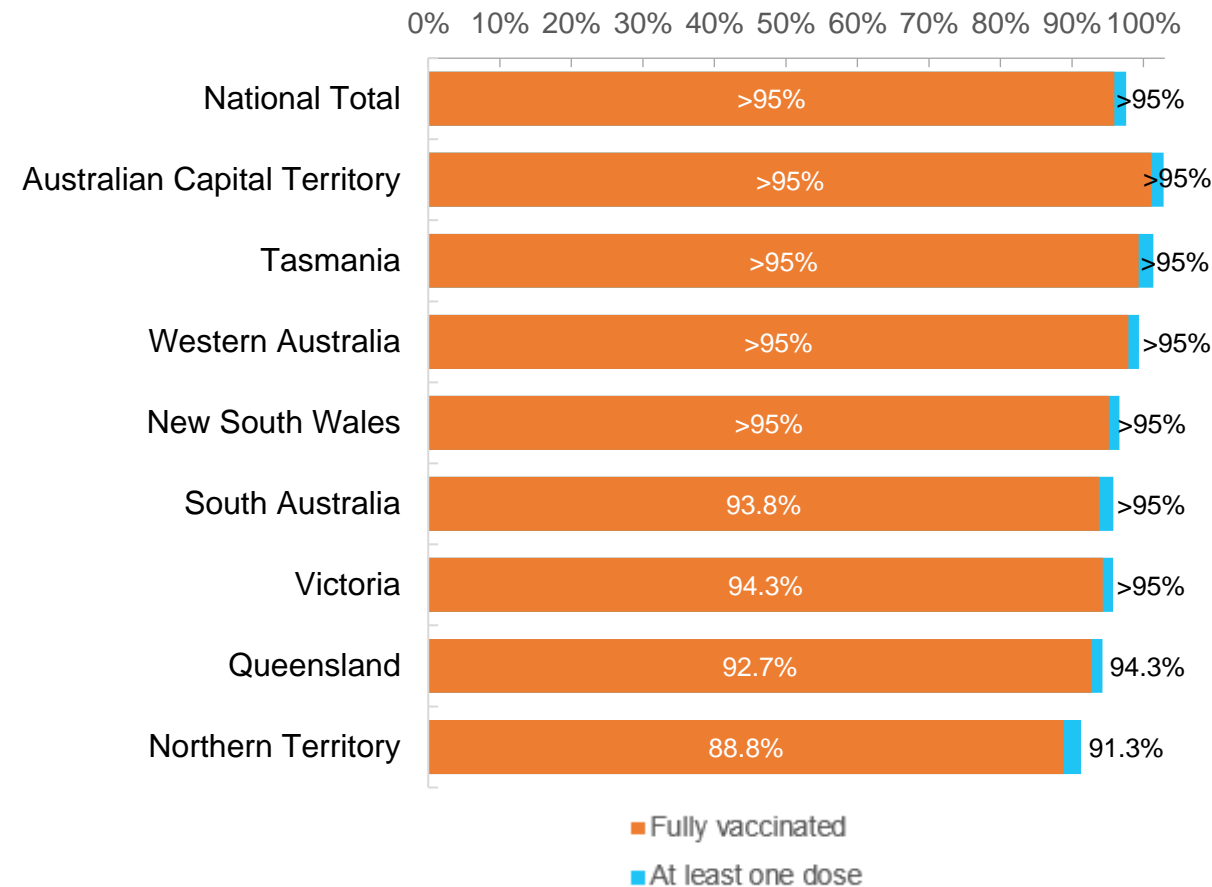


*Not an indication of percentage vaccinated, numbers will exceed 100 due to multiple doses required per person of the population. All doses are included for those aged 12 and above, and are based on vaccination provider location.

Data as at:
05 Jul 2022

Australia's COVID-19
Vaccine Roadmap

First and Second Doses by residential location



Aboriginal and Torres Strait Islander peoples

Number of people vaccinated

Data as at:
05 Jul 2022
Updated weekly

Australia's COVID-19
Vaccine Roadmap



443,710

people over the age of 16
have had at least one dose

85.0%

of people over the age of 16
have had at least one dose



425,479

people over the age of 16
are fully vaccinated

81.5%

of people over the age of 16 are
fully vaccinated



People aged 12 – 15 years

47,820

41,926

67.7%

59.4%

At least one dose

Fully vaccinated

178 Aboriginal community controlled health services (ACCHS)

0#

50

27

44

12

3

21

21

ACT

NSW

NT

QLD

SA

TAS

VIC

WA

Medicare Address State ^{##}	Individuals Dose 1	Individuals Dose 1 %	Individuals Dose 2	Individuals Dose 2 %
Australian Capital Territory	4,800	91.8%	4,680	89.5%
New South Wales	136,008	87.3%	132,965	85.4%
Northern Territory	41,498	89.7%	39,543	85.5%
Queensland	116,679	81.8%	111,358	78.1%
South Australia	20,088	80.6%	18,726	75.1%
Tasmania	13,900	88.9%	13,499	86.3%
Victoria	35,711	90.4%	34,923	88.4%
Western Australia	53,593	86.8%	49,992	81.0%
Unknown/Other Territories	21,433	70.4%	19,793	65.1%
Totals	443,710	85.0%	425,479	81.5%

Source: Australian Immunisation Register

*Identifying as Aboriginal and Torres Strait Islander is optional and the estimated population may be under reported.

**Includes all Aboriginal and Torres Strait Islander peoples who have received a vaccination, not limited to those administered in an ACCHS setting

#ACCHS in the ACT are currently operating as a Commonwealth Vaccine Clinics so not included to avoid double counting

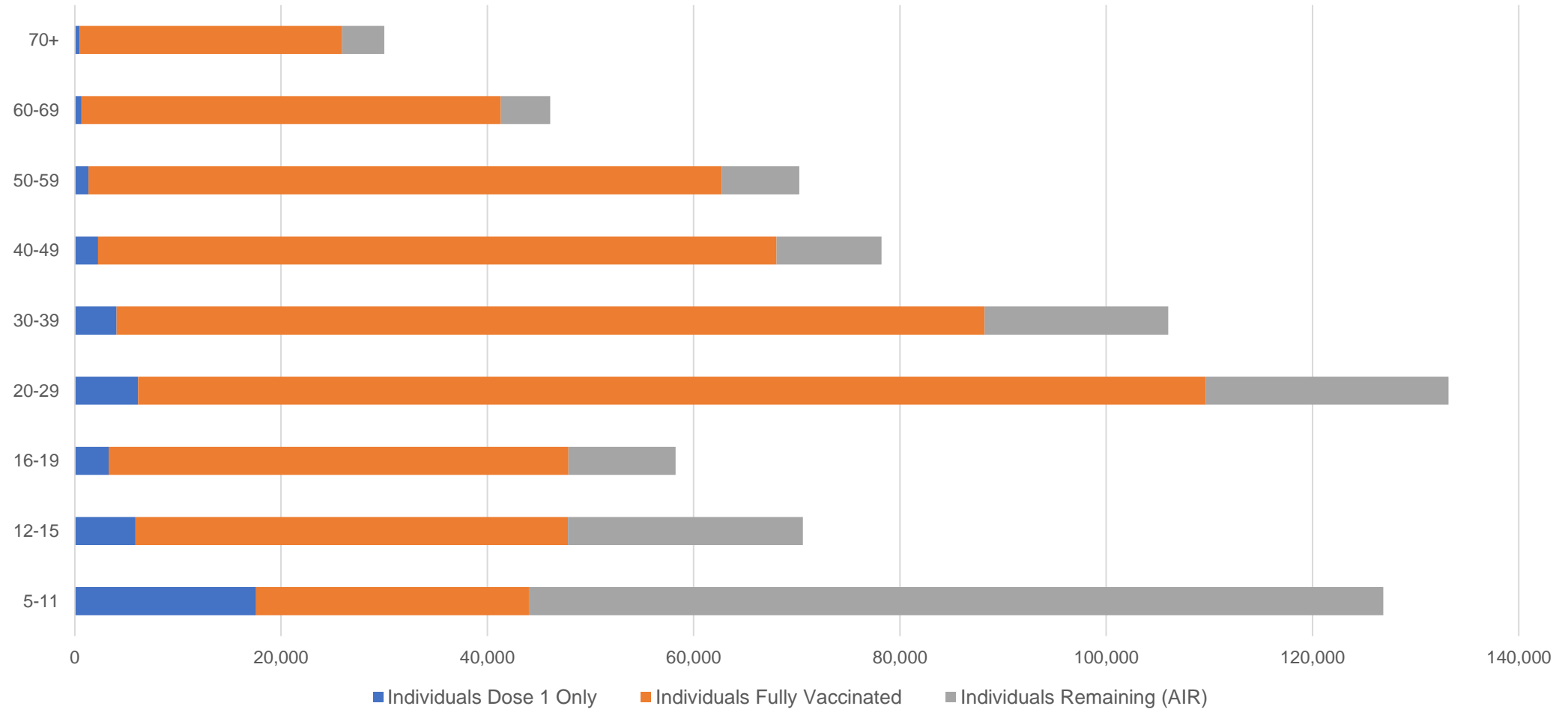
##The above table includes all identified Aboriginal and Torres Strait Islander people who are aged 16 and above by their state of residence.

Aboriginal and Torres Strait Islander peoples

Number of people vaccinated by age

Data as at:
05 Jul 2022
Updated weekly

Australia's COVID-19
Vaccine Roadmap



Source: Australian Immunisation Register

Commonwealth primary care

Data as at:
05 Jul 2022

Australia's COVID-19
Vaccine Roadmap



Primary care vaccine administration sites

5,703

GPs

128

CVCs

178

ACCHS

3,613

Pharmacies



37,796,486 total vaccine doses administered
primary care settings as at 05 July

+ 34,658 recorded in the last 24 hours

Primary care vaccinations by provider type

	Doses administered	Daily increase	7 day increase
General Practice* includes other Commonwealth	30,180,808	22,496	111,046
Pharmacy	7,615,678	12,162	58,306

NSW
13,032,056
(+11,743 daily increase)

VIC
9,375,086
(+7,885 daily increase)

QLD
7,282,170
(+8,281 daily increase)

WA
3,966,969
(+2,732 daily increase)

TAS
722,018
(+963 daily increase)

SA
2,279,479
(+2,741 daily increase)

ACT
598,054
(+624 daily increase)

NT
222,937
(+253 daily increase)

317,717

doses administered to persons
residing in other territories or with
missing residential information

*General practice includes Commonwealth Vaccination Clinics, Aboriginal Community Health Centres, Royal Flying Doctor Service and other Commonwealth vaccination facilities

Source: Australian Immunisation Register

Data as at:
05 Jul 2022

Commonwealth aged care and disability doses administered



1,318,878 (+ 366 last 24 hours)

Total vaccine doses administered in aged care and disability facilities as at 05 July

Number of doses administered as part of the Commonwealth aged and disability care rollout

NSW
572,568
(+72 daily increase)

VIC
247,744
(+42 daily increase)

QLD
210,147
(+127 daily increase)

WA
112,625
(+105 daily increase)

TAS
23,748
(<10 daily increase)

SA
86,426
(<10 daily increase)

ACT
17,964
(<10 daily increase)

NT
7,709
(<10 daily increase)

39,947

doses administered to persons
residing in other territories or with
missing residential information

*Sourced from the Australian Immunisation Register. Includes all persons vaccinated at participating residential aged care, disability and related industry settings.

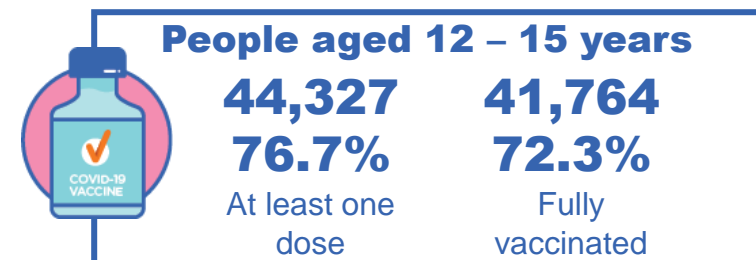
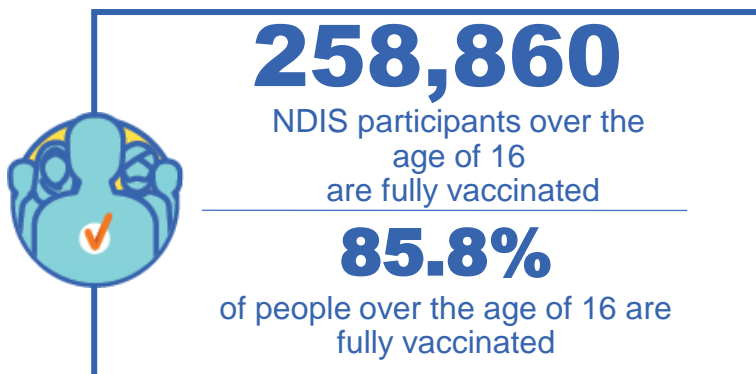
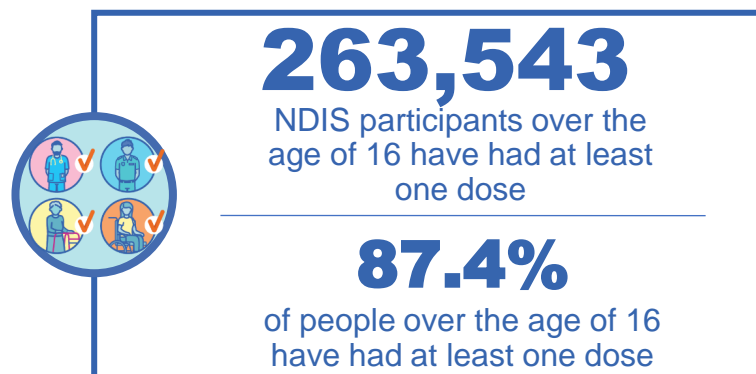
**State level breakdown indicates the residential location and may not align to the state in which the vaccination occurred.

Source: Australian Immunisation Register

National Disability Insurance Scheme (NDIS) reported vaccinations

Data as at:
30 June 2022
Updated weekly

Australia's COVID-19
Vaccine Roadmap



NDIS participant vaccinations

	People aged 16+ with at least one dose	People aged 16+ fully vaccinated	% People aged 16+ with at least one dose	% People aged 16+ fully vaccinated
ACT	4,957	4,893	89.3%	88.2%
NSW	80,634	79,372	87.8%	86.4%
NT	2,298	2,227	78.7%	76.3%
QLD	52,303	51,315	85.8%	84.2%
SA	21,582	21,083	85.2%	83.2%
TAS	6,583	6,430	87.6%	85.6%
VIC	69,988	68,840	88.5%	87.1%
WA	25,198	24,700	88.8%	87.0%
National	263,543	258,860	87.4%	85.8%

Source: Linkage between National Disability Insurance Agency data and the Australian Immunisation Register. Total NDIS participant numbers as at 30 May. Australian Immunisation Register data as at 29 June. Includes all participants regardless of residence type.

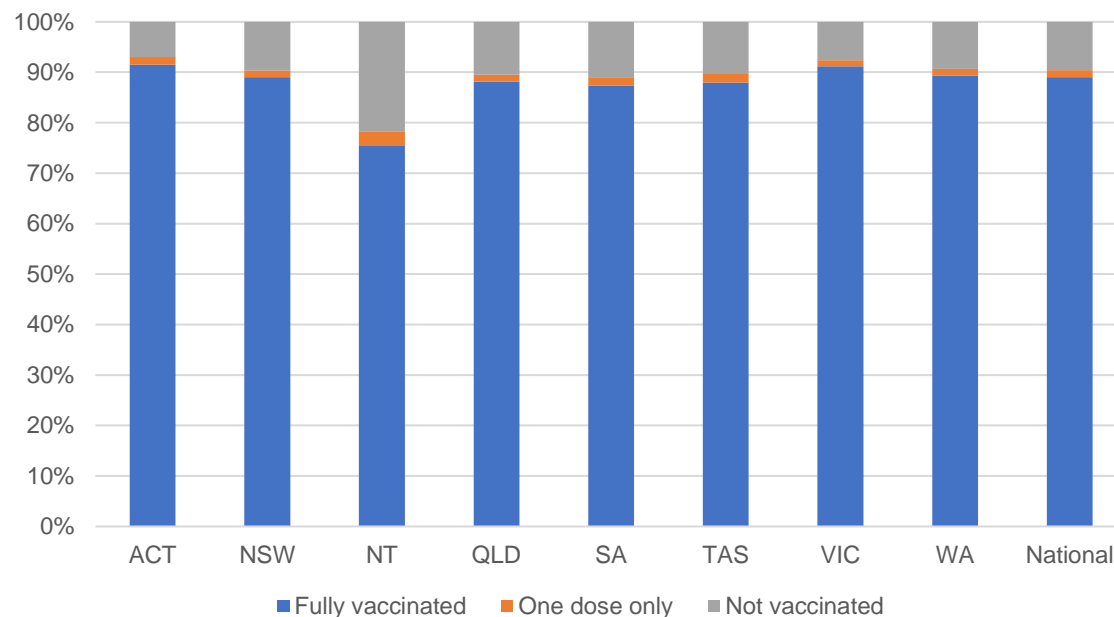
National Disability Insurance Scheme (NDIS) reported vaccinations

Data as at:
30 June 2022
Updated weekly

Australia's COVID-19
Vaccine Roadmap

NATIONAL	Total people with at least one dose	People fully vaccinated	Total number of individuals in cohort	% People with at least one dose	% People fully vaccinated
NDIS participants living in disability accommodation	21,298	20,973	23,469	90.7%	89.4%

NDIS participants in disability and aged care accommodation



Source: Linkage between National Disability Insurance Agency data and the Australian Immunisation Register. Includes participants residing in disability accommodation only.

Source: Total NDIS participant numbers as at 30 May. Participant data as at 29 June. Australian Immunisation Register data as at 29 June. Worker data as at 30 June.

NDIS workforce vaccinations

	NDIS workers with at least one dose	NDIS workers fully vaccinated	% NDIS workers with at least one dose	% NDIS workers fully vaccinated
NSW	127,532	122,353	98.2%	94.3%
VIC	118,277	114,994	98.5%	95.7%
QLD	71,506	70,666	97.9%	96.7%
WA	34,529	33,079	99.0%	94.8%
SA	35,855	33,971	98.5%	93.3%
TAS	12,437	12,025	98.8%	95.5%
ACT	12,329	12,302	99.8%	99.6%
NT	3,959	3,809	99.6%	95.8%
TOTAL	416,424	403,199	98.4%	95.3%

Source: the NDIS Commission has established a requirement for registered NDIS providers who provide intensive disability support services to report on the vaccination status of workers they employ, or otherwise engage, to deliver NDIS-funded supports and services, and who are required to be vaccinated in accordance with in-force state and territory public health orders. The statistics reflect data reported to the NDIS Commission by registered NDIS providers and should be considered indicative and subject to change

Note: Some registered NDIS providers are yet to report on the vaccination status of their workforce. The NDIS Commission is working with those providers around reporting requirements.

Remaining workers not included include those exempt from vaccination requirements, workers whose vaccination status is not yet verified by the provider (such as workers on leave) and provider reporting anomalies.

Residential aged care vaccination rollout

Residential aged care facilities status

176,490

People fully vaccinated

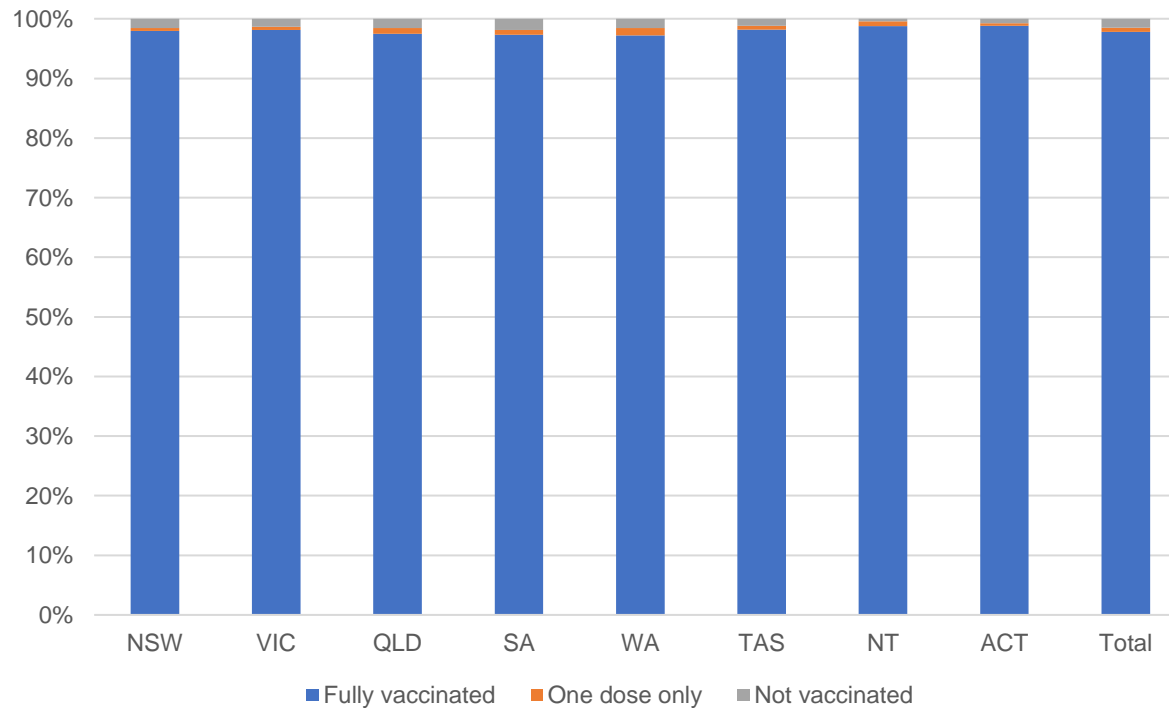
177,740

People with at least one dose

Australia's COVID-19 Vaccine Roadmap

Data as at:
30 June 2022
Updated weekly

Aged care resident vaccinations



Aged care worker vaccinations

Jurisdictions	Total workers with at least one dose	Workers fully vaccinated	% Workers with at least one dose	% Workers fully vaccinated
NSW	77,570	77,442	99.9%	99.7%
VIC	71,156	71,155	100.0%	100.0%
QLD	48,482	48,481	99.9%	99.8%
SA	27,012	27,005	100.0%	100.0%
WA	24,639	24,638	100.0%	100.0%
TAS	7,534	7,534	100.0%	100.0%
NT	920	920	100.0%	100.0%
ACT	2,953	2,953	100.0%	100.0%
Total	260,266	260,128	99.9%	99.9%

Source: Residential aged care provider self-reported COVID-19 vaccination information

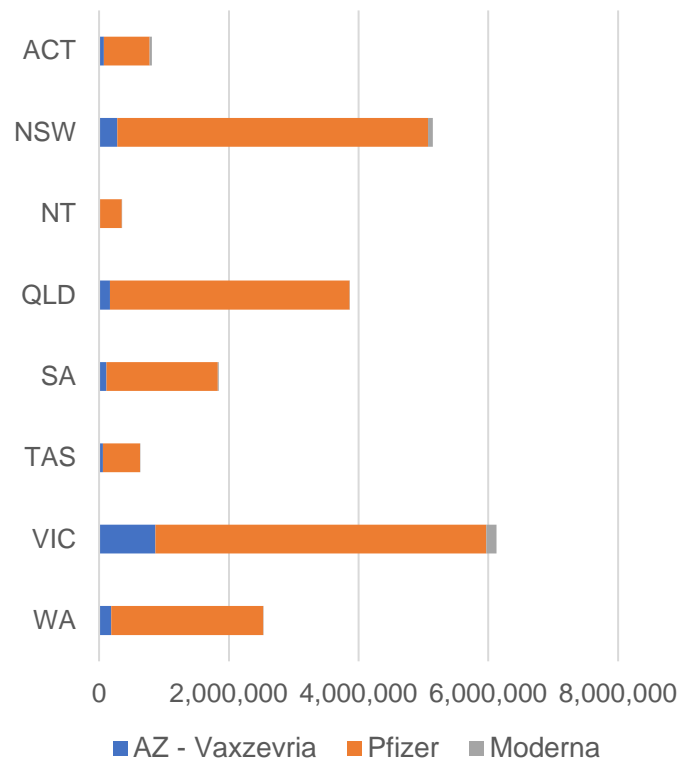
*Status updates are provided by facilities at least once per week. Reporting is updated Monday to Friday to encompass different facility updates being made on different days.

Data is sourced directly from Aged Care Service Providers and is not drawn or closely aligned with data from AIR due to inconsistencies and potential lags in uploading of records.

Data as at:
05 Jul 2022

Jurisdiction administered

Total vaccine doses administered in State and Territory clinics as at 05 July



21,316,047 total vaccine doses administered
in State and Territory clinics as at 05 July
+ **3,738** recorded in the last 24 hours
+ **17,290** recorded in the last 7 days

NSW
5,145,489
(+1,497 daily
increase)

VIC
6,135,207
(+519 daily
increase)

QLD
3,863,139
(+257 daily
increase)

WA
2,535,106
(+485 daily
increase)

TAS
629,827
(+112 daily
increase)

SA
1,848,959
(+258 daily
increase)

ACT
810,816
(+593 daily
increase)

NT
347,504
(+17 daily
increase)

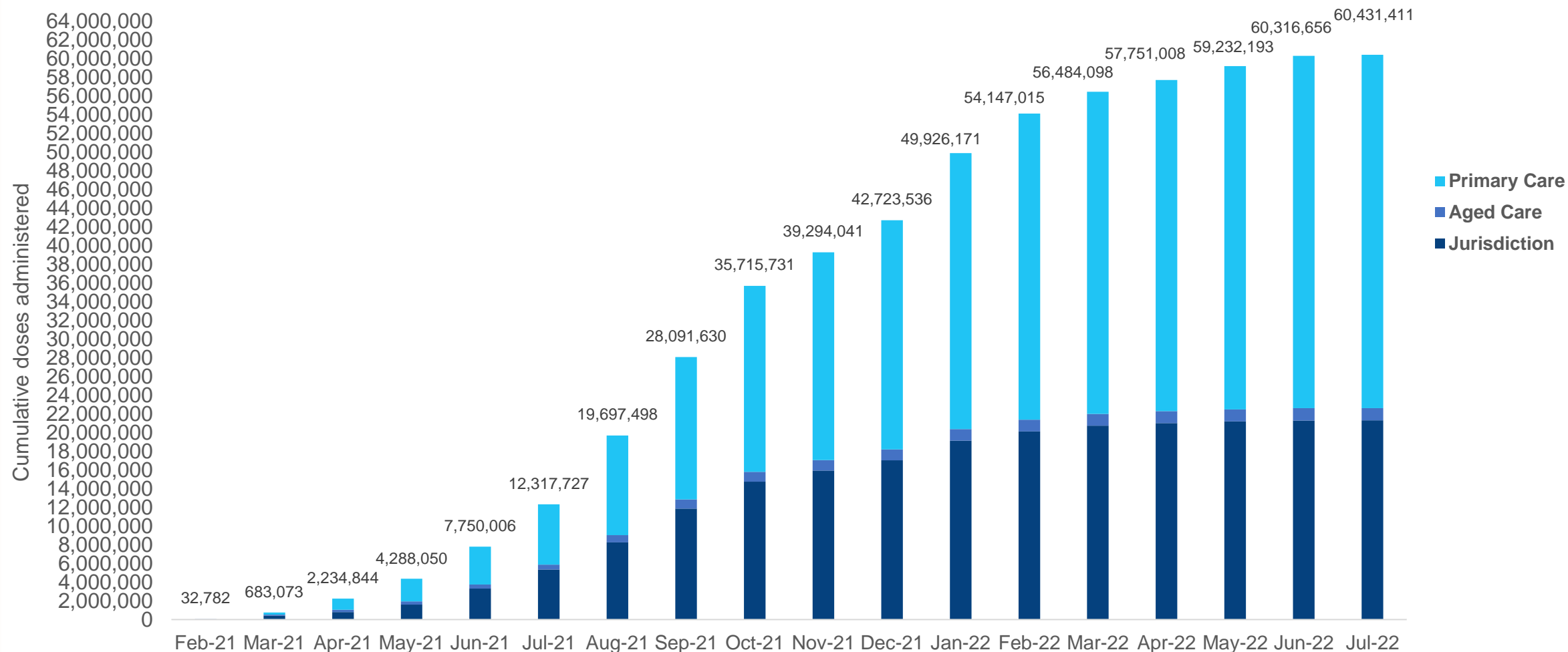
*Sourced from the Australian Immunisation Register. Numbers are calculated as difference in daily cumulative reported numbers to allow for historical corrections.

Source: Australian Immunisation Register

Cumulative doses administered by channel

Data as at:
05 Jul 2022

Australia's COVID-19
Vaccine Roadmap

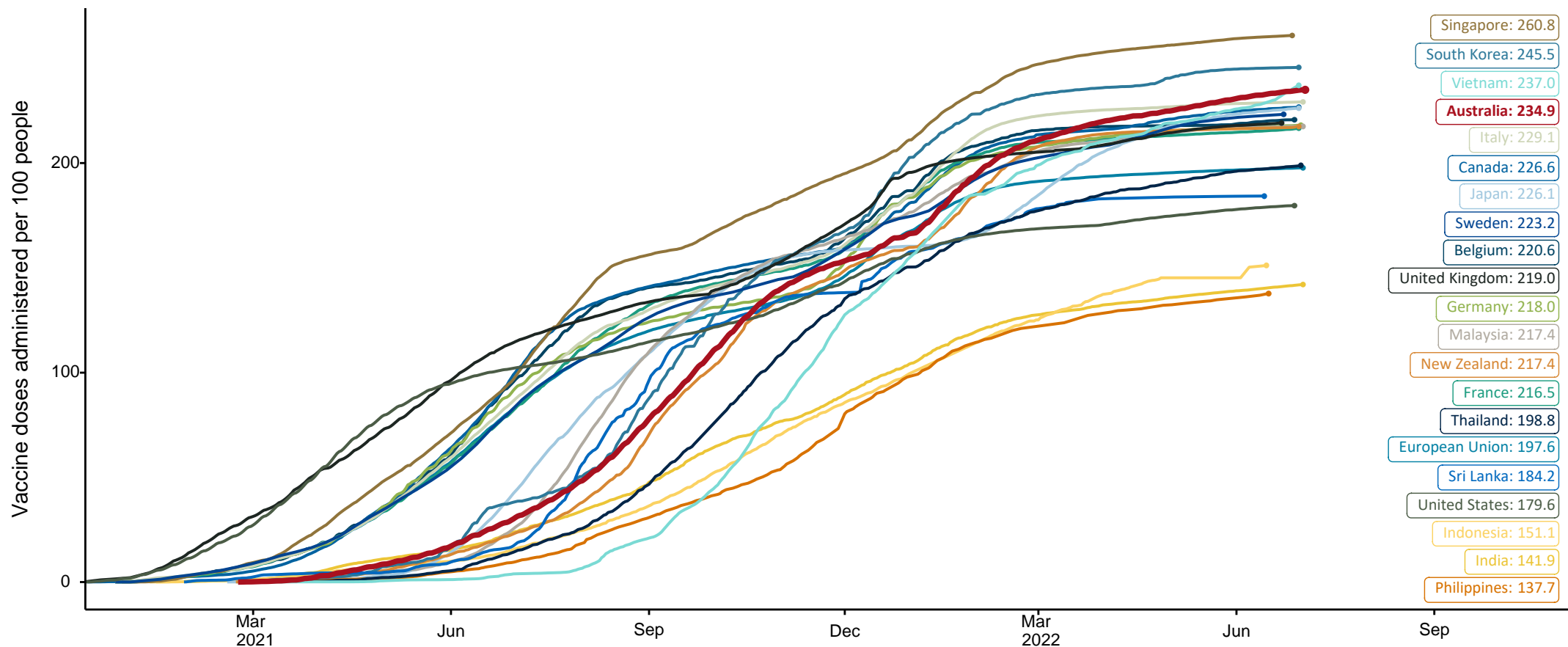


Source: Australian Immunisation Register

COVID-19 vaccine doses per 100, Australia and select countries

Data as at:
03 July 2022
Updated weekly

Australia's COVID-19
Vaccine Roadmap

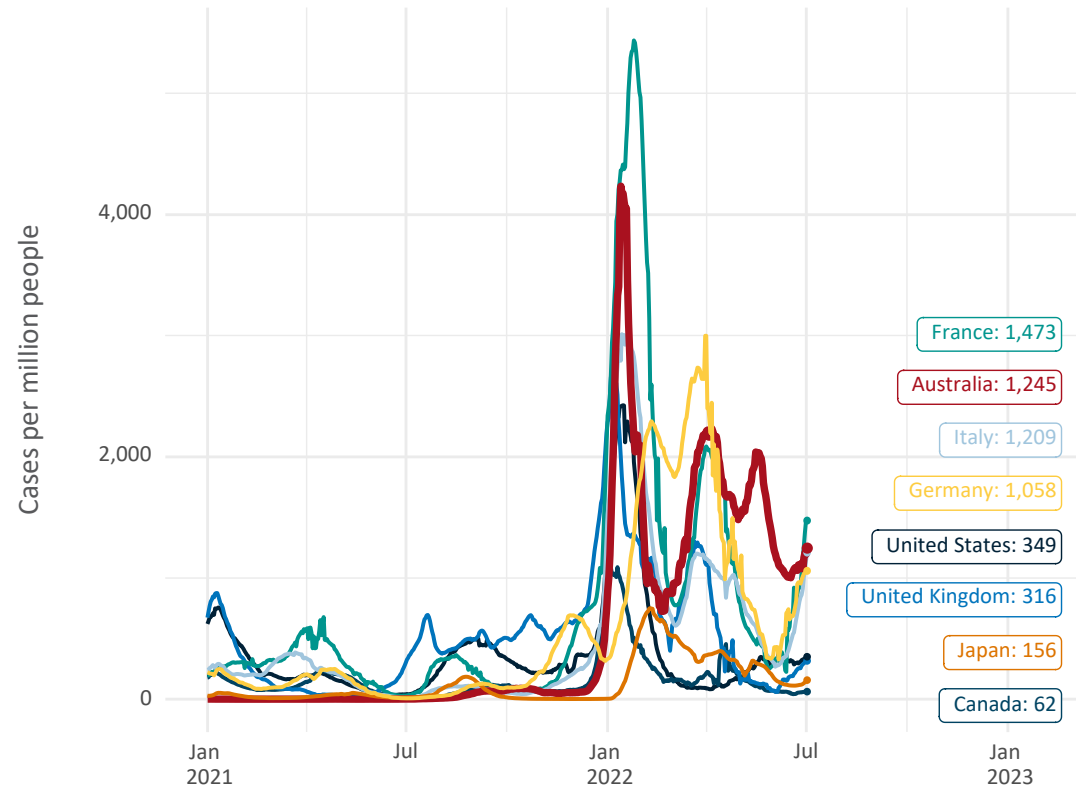


Note: From 11 January 2022, data for Australia includes all doses administered to people 5 and over. Prior to 11 January, data was for 12 and over.
Source: Department of Health (Australia), Our World in Data (international)
Latest data: 03 July

International data – COVID-19

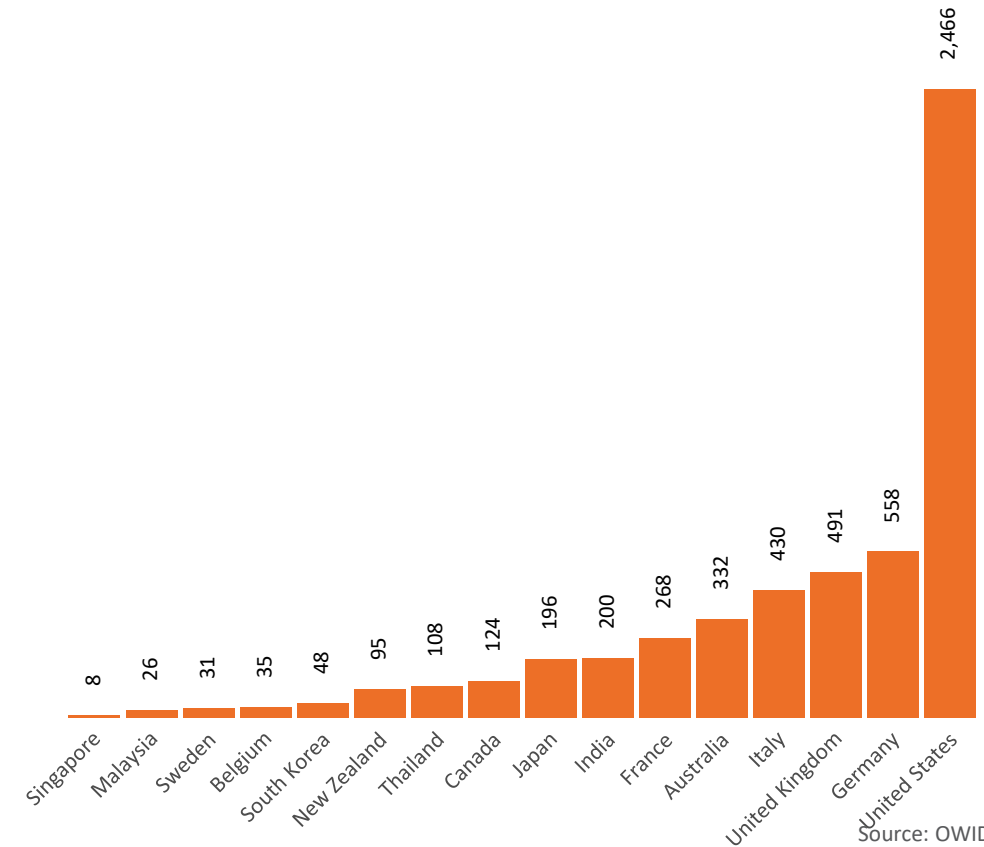
Data as at:
03 July 2022
Updated weekly

New daily cases per million since 2021, Australia and G7 countries
Smoothed - 7 day average



Source: OWID
Data downloaded: 04 Jul 2022 09:20
Latest data: 02 Jul 2022

COVID-19 deaths in past 7 days - Australia and select countries



Source: OWID
Data downloaded: 04 Jul 2022 09:20
Latest data: 02 Jul 2022