



**Australian Government**  
**Operation COVID Shield**

# COVID-19 Vaccine Roll-out

05 July 2022

Data as at:  
04 Jul 2022

# Total vaccine doses



**60,392,649** total vaccine doses administered nationally as at 04 July

**+31,769** recorded in the last 24 hours



**20,118,031**

people have had at least one dose

**>95%**

of people over the age of 16 have had at least one dose



**19,781,053**

people are fully vaccinated

**>95%**

of people over the age of 16 are fully vaccinated



**13,905,793**

people over the age of 16 who have received three or more doses

**NSW**  
**18,738,539**  
(+9,824 daily increase)

**VIC**  
**15,834,664**  
(+6,813 daily increase)

**QLD**  
**11,420,953**  
(+6,738 daily increase)

**WA**  
**6,639,559**  
(+3,441 daily increase)

**TAS**  
**1,371,769**  
(+979 daily increase)

**SA**  
**4,206,981**  
(+2,597 daily increase)

**ACT**  
**1,584,045**  
(+1,240 daily increase)

**NT**  
**596,139**  
(+137 daily increase)

\*Administration state breakdown indicates state in which a vaccine was administered

\*\*Overall dose count includes instances of more than three doses per person in a small number of cases.

Source: Australian Immunisation Register

# Booster Vaccinations

Data as at:  
04 Jul 2022



**226,611**

Indigenous people who have received three or more doses

**53.9%**

of eligible population (420,410)



**167,519**

Aged Care Residents who have received three or more doses##

**94.9%**

of eligible population (176,532)



**193,439**

NDIS participants

who have received three or more doses#

**75.1%**

of eligible population (257,000)

**22,304**

NDIS residents

who have received three or more doses#

**89.8%**

of eligible population (24,000)



**13,905,793**

total people who have received three or more doses

**+6,130** daily increase

**70.5%** of eligible population (19,716,809)

	Number of People	Daily Increase	% of Eligible
NSW	4,244,307	2,060	68.1%
VIC	3,706,749	1,395	72.9%
QLD	2,410,040	1,226	63.5%
WA	1,704,443	479	82.8%
SA	996,336	552	74.1%
TAS	318,226	132	73.1%
ACT	274,487	100	79.0%
NT	131,566	19	78.1%

**119,639**

doses administered to persons residing in other territories or with missing residential information

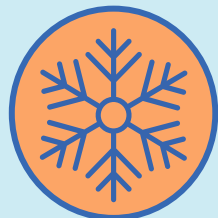
\*People may belong to multiple groups and could be represented in the above breakdowns multiple times.  
# NDIS participants data as at 29 June 2022. ## Aged Care Residents data as at 4 July 2022.

Source: Australian Immunisation Register

# Winter / Fourth Doses

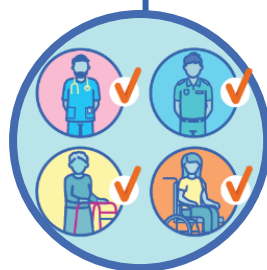
Data as at:  
04 Jul 2022

Australia's COVID-19  
Vaccine Roadmap



**2,412,626** total people (16+) who have received four or more doses

**+21,421** daily increase



**2,124,878**

People aged 65+ who have received four or more doses

**59.0%**

of eligible population (3,603,830)



**91,451**

Aged Care Residents who have received four or more doses<sup>#</sup>

**66.1%**

of eligible population (138,355)

	Number of People 16+	Daily Increase
ACT	46,298	370
NSW	780,431	6,430
NT	10,415	75
QLD	459,845	4,735
SA	197,030	1,835
TAS	68,029	726
VIC	597,731	4,512
WA	240,983	2,582

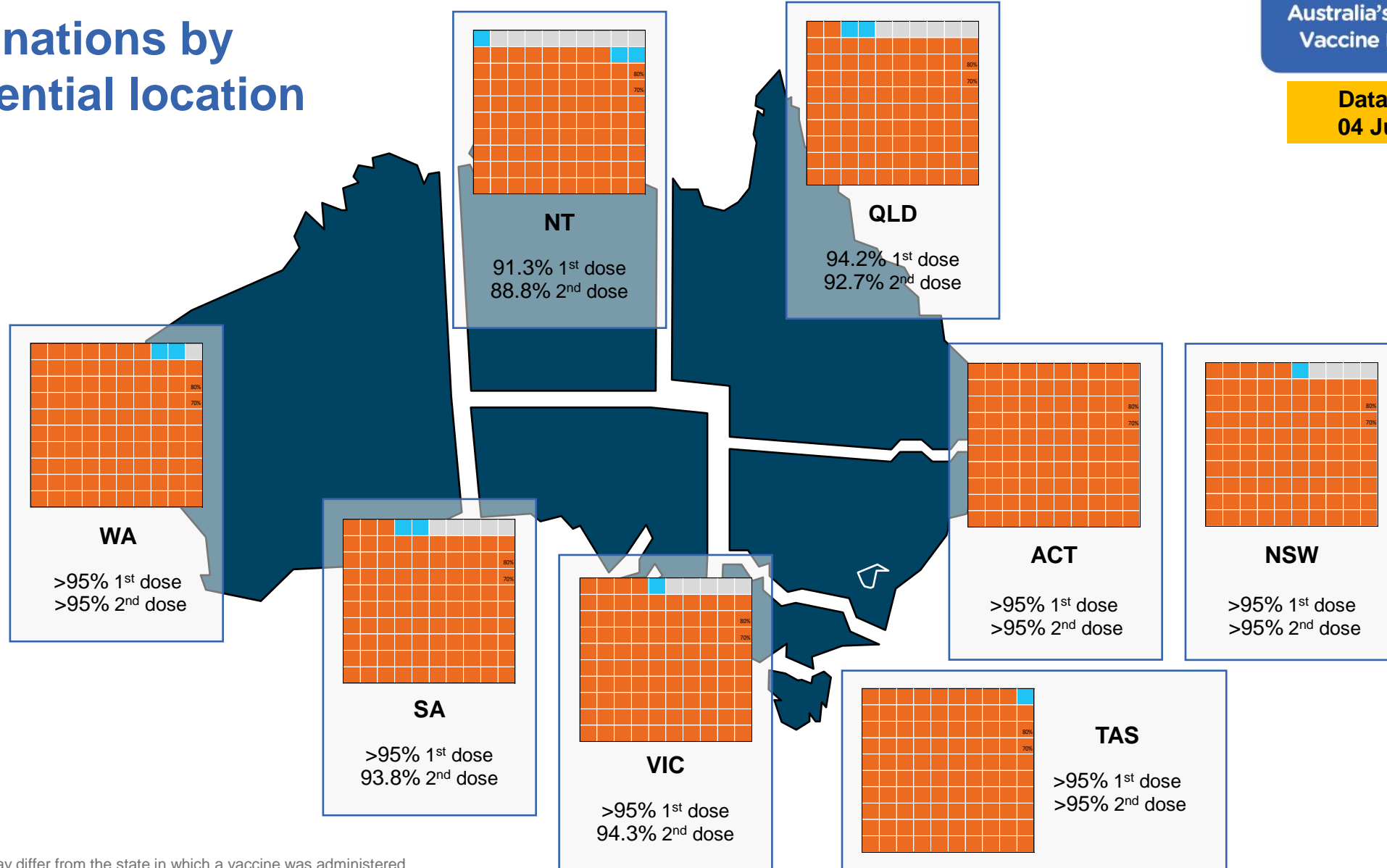
**11,864** doses administered to persons residing in other territories or with missing residential information

\*People become eligible for a winter booster four months after their third dose. Individuals may belong to multiple groups and could be represented in the above multiple times.  
#Aged Care Residents data as at 3 July 2022.

Source: Australian Immunisation Register

Data as at:  
04 Jul 2022

# Vaccinations by residential location



\*Residential state may differ from the state in which a vaccine was administered

# Commonwealth and Jurisdiction vaccine doses administered

Data as at:  
04 Jul 2022



**60,392,649** total vaccine doses administered nationally as at 04 July

**+ 31,769** recorded in the last 24 hours

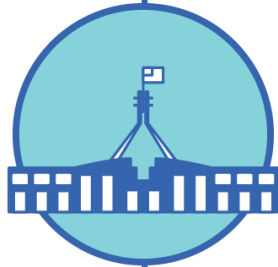


**21,312,309**

doses administered by state and territory facilities

**+ 2,330**

recorded in the last 24 hours



**39,080,340**

doses administered by commonwealth facilities

**+ 29,439**

recorded in the last 24 hours

**37,761,828** total vaccine doses administered in primary care settings

**1,318,512** total vaccine doses administered in aged care and disability settings

NSW	Jurisdictions	Commonwealth
Cumulative	5,143,992	13,594,547
Daily increase	403	9,421

VIC	Jurisdictions	Commonwealth
Cumulative	6,134,688	9,699,976
Daily increase	353	6,460

QLD	Jurisdictions	Commonwealth
Cumulative	3,862,882	7,558,071
Daily increase	73	6,665

WA	Jurisdictions	Commonwealth
Cumulative	2,534,621	4,104,938
Daily increase	486	2,955

TAS	Jurisdictions	Commonwealth
Cumulative	629,715	742,054
Daily increase	73	906

SA	Jurisdictions	Commonwealth
Cumulative	1,848,701	2,358,280
Daily increase	257	2,340

ACT	Jurisdictions	Commonwealth
Cumulative	810,223	773,822
Daily increase	660	580

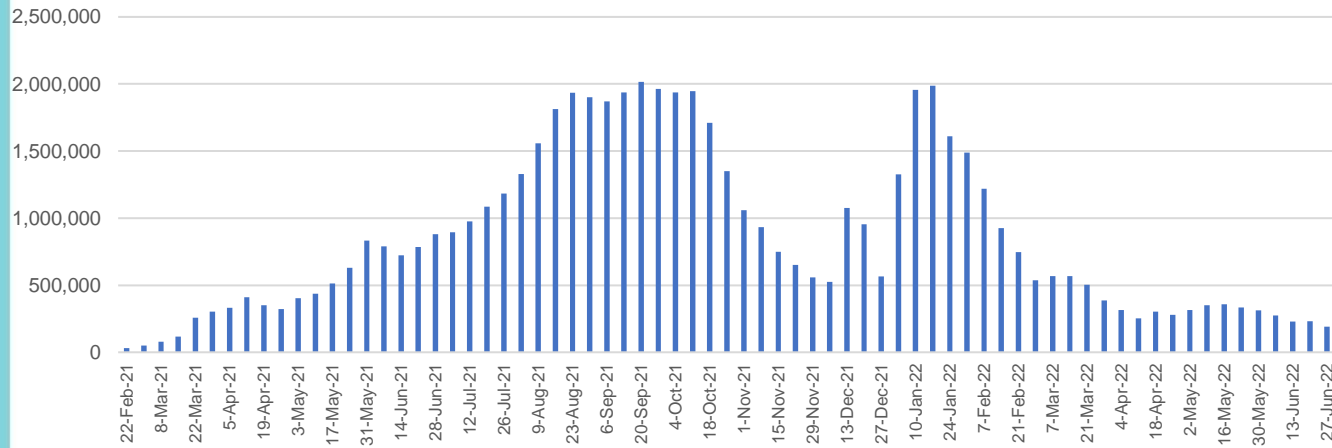
NT	Jurisdictions	Commonwealth
Cumulative	347,487	248,652
Daily increase	25	112

# Vaccine milestone charts

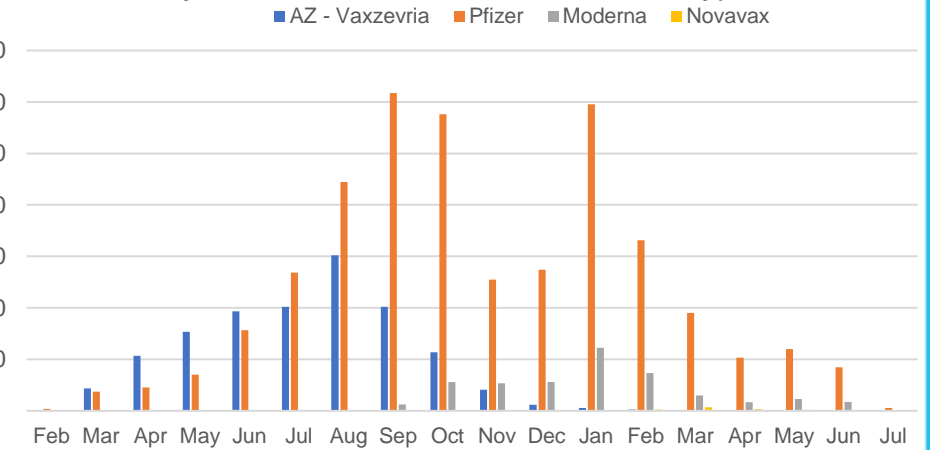
Data as at:  
04 Jul 2022

Australia's COVID-19  
Vaccine Roadmap

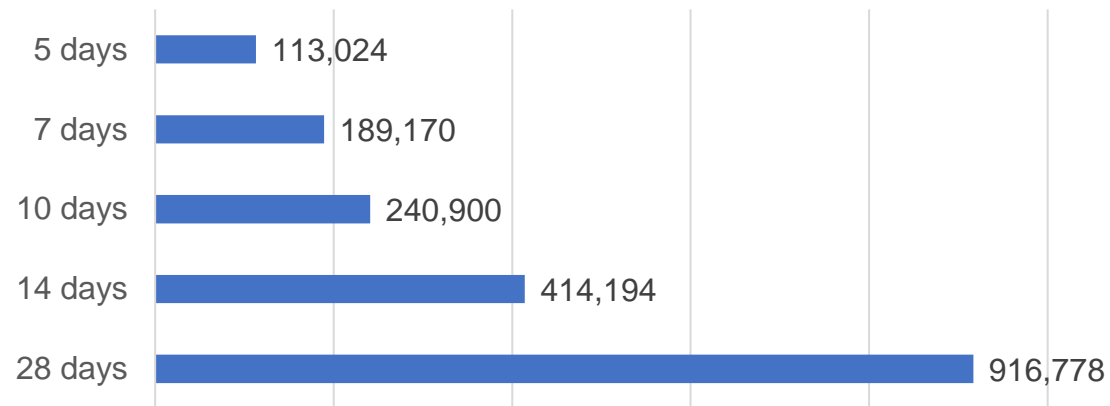
Doses Administered by Week



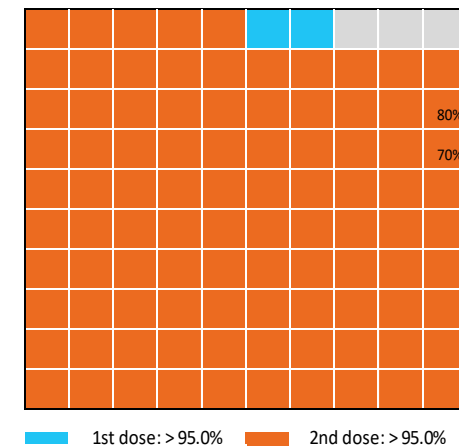
Doses by administration month and vaccine type



Doses Reported



Eligible population percentage coverage



\*Each square represents 1% of the national population. Squares are filled as milestones are achieved.

\*Sourced from the Australian Immunisation Register.

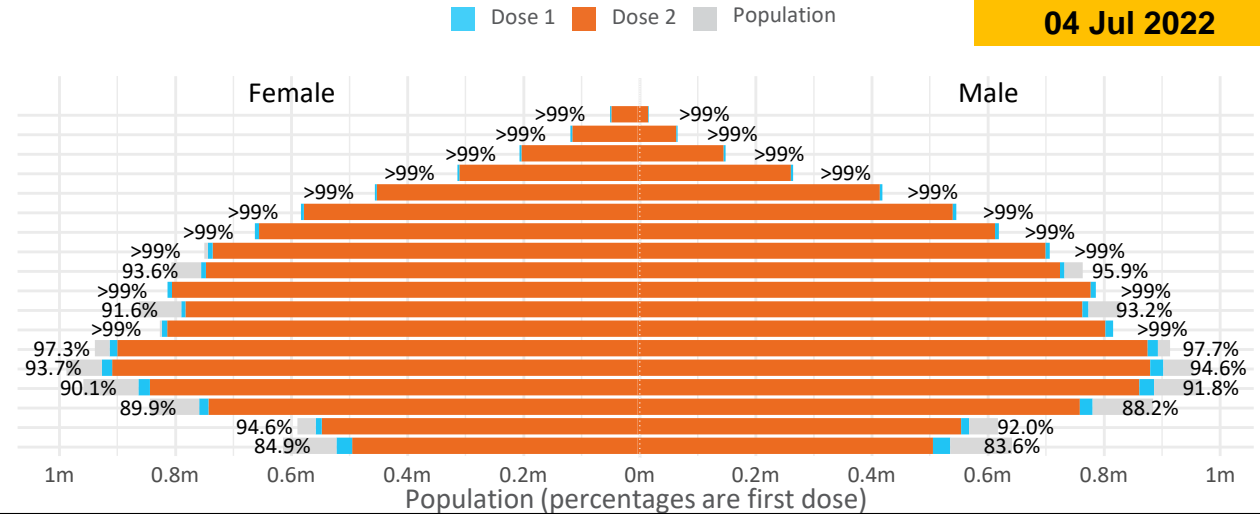
# Doses by age and sex

First and second doses by age and sex

	16+	50+	12-15	5-11
Dose 1	97.57% (20,118,031 doses / 20,619,959 people)	>99% (8,934,482 doses / 8,749,703 people)	84.26% (1,048,215 doses / 1,243,990 people)	52.27% (1,190,098 doses / 2,276,638 people)
Dose 2	95.93% (19,781,053 doses / 20,619,959 people)	>99% (8,826,652 doses / 8,749,703 people)	79.73% (991,826 doses / 1,243,990 people)	39.73% (904,563 doses / 2,276,638 people)

Data as at:  
04 Jul 2022

Age	Dose 1	Dose 2
95+	66,086 (>99%)	62,624 (>99%)
90-94	182,803 (>99%)	177,305 (>99%)
85-89	352,170 (>99%)	345,423 (>99%)
80-84	573,279 (>99%)	566,153 (>99%)
75-79	867,251 (>99%)	858,791 (>99%)
70-74	1,119,808 (>99%)	1,108,401 (>99%)
65-69	1,272,211 (>99%)	1,257,299 (>99%)
60-64	1,439,157 (>99%)	1,422,612 (>99%)
55-59	1,475,631 (94.9%)	1,458,922 (93.8%)
50-54	1,586,086 (>99%)	1,569,122 (>99%)
45-49	1,550,309 (92.5%)	1,531,918 (91.4%)
40-44	1,626,889 (>99%)	1,602,900 (98.9%)
35-39	1,794,583 (97.8%)	1,762,330 (96.0%)
30-34	1,820,172 (94.6%)	1,778,097 (92.4%)
25-29	1,744,186 (91.5%)	1,696,202 (89.0%)
20-24	1,531,457 (89.4%)	1,491,053 (87.1%)
16-19	1,115,953 (93.3%)	1,091,901 (91.3%)
12-15	1,048,215 (84.3%)	991,826 (79.7%)



	AUS	ACT	NSW	NT	QLD	SA	TAS	VIC	WA
16 and over - dose 1	20,118,031	353,644	6,344,352	173,945	3,875,923	1,379,725	446,195	5,177,033	2,101,351
16 and over - dose 2	19,781,053	347,893	6,246,010	169,270	3,812,110	1,350,418	437,187	5,098,307	2,070,292
16 and over - population	20,619,959*	344,037	6,565,651	190,571	4,112,707	1,440,400	440,172	5,407,574	2,114,978
16 and over % with dose 1	97.57%	>99%	96.63%	91.28%	94.24%	95.79%	>99%	95.74%	>99%
16 and over % with dose 2	95.93%	>99%	95.13%	88.82%	92.69%	93.75%	>99%	94.28%	97.89%
5 to 11 - dose 1	1,190,098	31,707	355,445	13,131	206,129	83,545	28,434	324,130	140,004
5 to 11 - dose 2	904,563	27,403	276,415	8,807	150,575	63,863	23,208	247,023	102,646
5 to 11 - population	2,276,638	39,789	716,460	24,750	478,731	148,816	45,033	578,499	244,154
5 to 11 % with dose 1	52.27%	79.69%	49.61%	53.05%	43.06%	56.14%	63.14%	56.03%	57.34%
5 to 11 % with dose 2	39.73%	68.87%	38.58%	35.58%	31.45%	42.91%	51.54%	42.70%	42.04%
12 to 15 - dose 1	1,048,215	20,142	322,302	10,730	205,424	68,182	22,827	273,875	115,401
12 to 15 - dose 2	991,826	19,579	307,802	9,680	191,773	64,403	21,712	261,977	106,802
12 to 15 - population	1,243,990	19,693	390,330	13,060	270,146	82,747	26,308	308,611	132,869
12 to 15 % with dose 1	84.26%	>99%	82.57%	82.16%	76.04%	82.40%	86.77%	88.74%	86.85%
12 to 15 % with dose 2	79.73%	>99%	78.86%	74.12%	70.99%	77.83%	82.53%	84.89%	80.38%

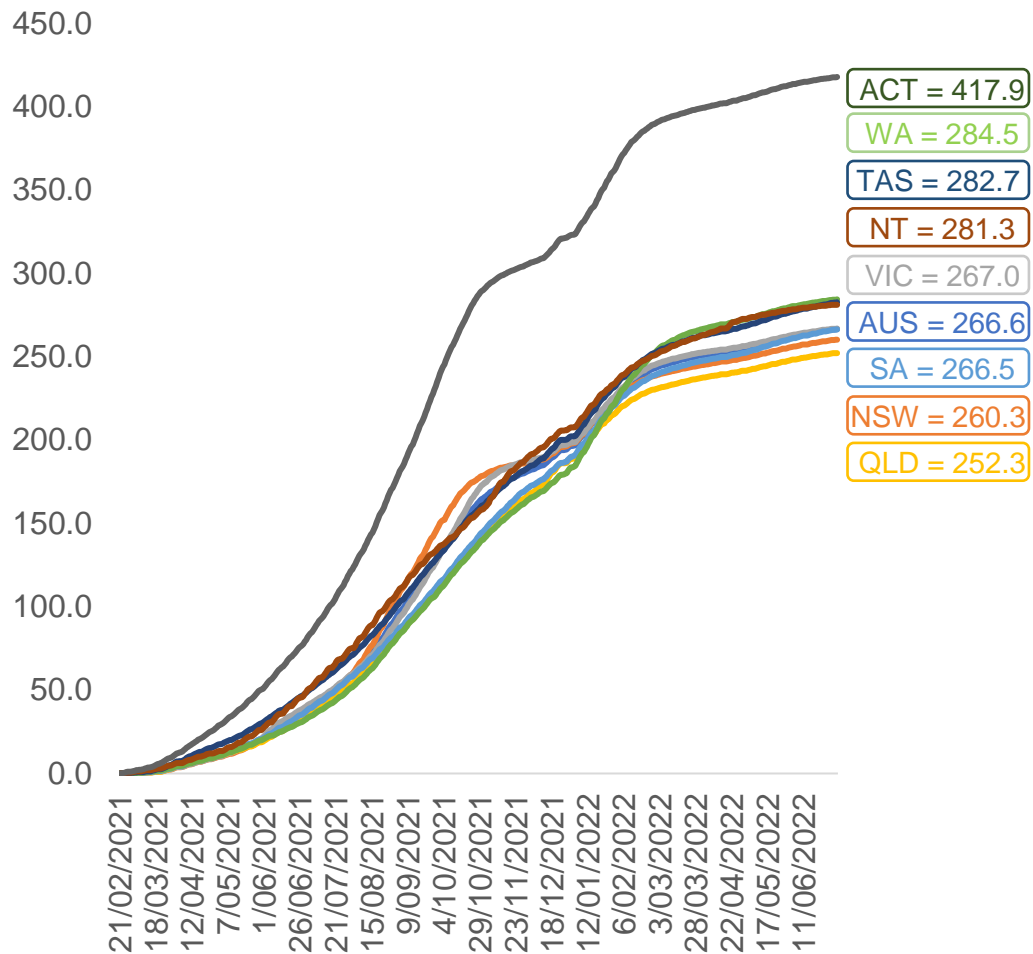
\*National population will not equal sum of listed jurisdictions due to a small number of people counted in national population residing in some 'other' territories. Sum of state doses will not add to national total as some records are unable to be geocoded to a State or Territory. Doses sourced from Australian Immunisation Register, population from ABS ERP June 2020



Data as at:  
04 Jul 2022

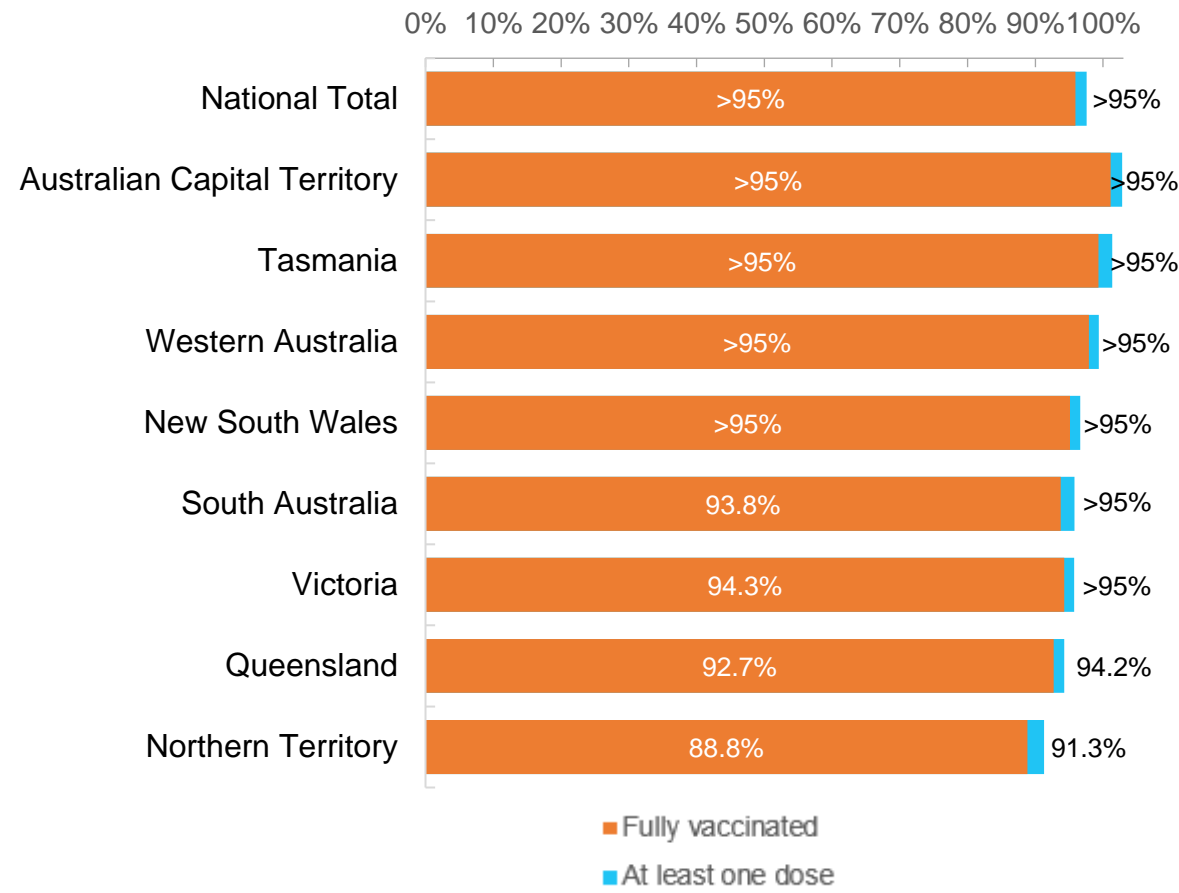
# Vaccinations by location

Cumulative total doses administered vs eligible state populations\*



\*Not an indication of percentage vaccinated, numbers will exceed 100 due to multiple doses required per person of the population. All doses are included for those aged 12 and above, and are based on vaccination provider location.

First and Second Doses by residential location



# Aboriginal and Torres Strait Islander peoples

## Number of people vaccinated

Data as at:  
28 Jun 2022  
Updated weekly

Australia's COVID-19  
Vaccine Roadmap



**443,113**

people over the age of 16  
have had at least one dose

**85.0%**

of people over the age of 16  
have had at least one dose



**424,811**

people over the age of 16  
are fully vaccinated

**81.5%**

of people over the age of 16 are  
fully vaccinated



People aged 12 – 15 years

**47,872**

**42,003**

**67.8%**

**59.5%**

At least one dose

Fully vaccinated

### 178 Aboriginal community controlled health services (ACCHS)

0#	50	27	44	12	3	21	21
<b>ACT</b>	<b>NSW</b>	<b>NT</b>	<b>QLD</b>	<b>SA</b>	<b>TAS</b>	<b>VIC</b>	<b>WA</b>

Medicare Address State <sup>##</sup>	Individuals Dose 1	Individuals Dose 1 %	Individuals Dose 2	Individuals Dose 2 %
Australian Capital Territory	4,796	91.8%	4,674	89.5%
New South Wales	135,834	87.3%	132,792	85.4%
Northern Territory	41,467	89.7%	39,494	85.4%
Queensland	116,516	81.8%	111,181	78.1%
South Australia	20,051	80.5%	18,681	75.0%
Tasmania	13,878	88.8%	13,476	86.2%
Victoria	35,636	90.4%	34,853	88.4%
Western Australia	53,544	86.8%	49,909	80.9%
Unknown/Other Territories	21,391	70.4%	19,751	65.0%
<b>Totals</b>	<b>443,113</b>	<b>85.0%</b>	<b>424,811</b>	<b>81.5%</b>

Source: Australian Immunisation Register

\*Identifying as Aboriginal and Torres Strait Islander is optional and the estimated population may be under reported.

\*\*Includes all Aboriginal and Torres Strait Islander peoples who have received a vaccination, not limited to those administered in an ACCHS setting

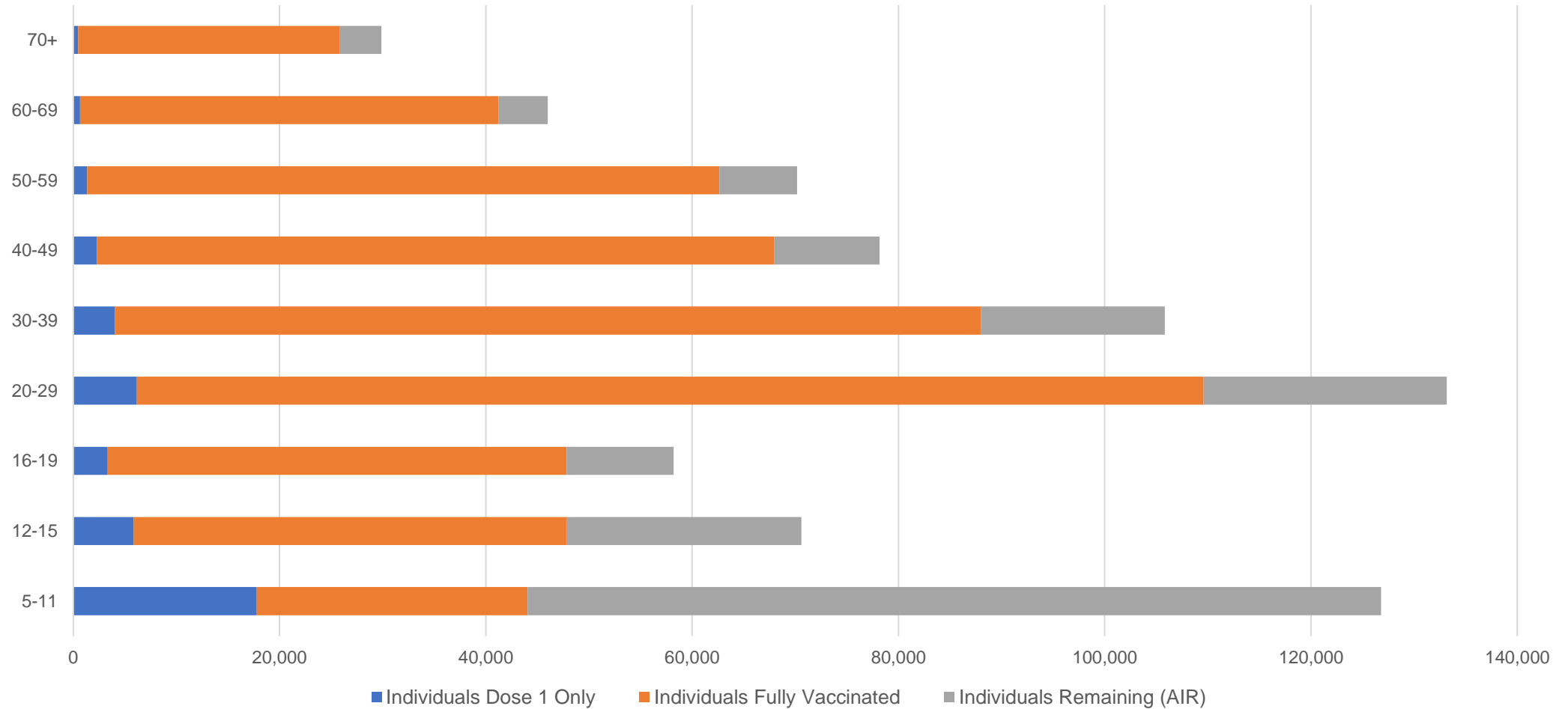
#ACCHS in the ACT are currently operating as a Commonwealth Vaccine Clinics so not included to avoid double counting

##The above table includes all identified Aboriginal and Torres Strait Islander people who are aged 16 and above by their state of residence.

# Aboriginal and Torres Strait Islander peoples Number of people vaccinated by age

Data as at:  
28 Jun 2022  
Updated weekly

Australia's COVID-19  
Vaccine Roadmap



Source: Australian Immunisation Register

# Commonwealth primary care

Data as at:  
04 Jul 2022

Australia's COVID-19  
Vaccine Roadmap



## Primary care vaccine administration sites

<b>5,703</b>	<b>128</b>	<b>178</b>	<b>3,613</b>
GPs	CVCs	ACCHS	Pharmacies



**37,761,828** total vaccine doses administered  
primary care settings as at 04 July  
**+ 28,988** recorded in the last 24 hours

## Primary care vaccinations by provider type

	Doses administered	Daily increase	7 day increase
<b>General Practice*</b> includes other Commonwealth	30,158,312	18,114	113,138
<b>Pharmacy</b>	7,603,516	10,874	56,919

**NSW**  
**13,020,313**  
(+9,010 daily increase)

**VIC**  
**9,367,201**  
(+6,520 daily increase)

**QLD**  
**7,273,889**  
(+6,540 daily increase)

**WA**  
**3,964,237**  
(+2,819 daily increase)

**TAS**  
**721,055**  
(+861 daily increase)

**SA**  
**2,276,738**  
(+2,383 daily increase)

**ACT**  
**597,430**  
(+507 daily increase)

**NT**  
**222,684**  
(+106 daily increase)

**318,281**

doses administered to persons residing in other territories or with missing residential information

\*General practice includes Commonwealth Vaccination Clinics, Aboriginal Community Health Centres, Royal Flying Doctor Service and other Commonwealth vaccination facilities

Source: Australian Immunisation Register

Data as at:  
04 Jul 2022

# Commonwealth aged care and disability doses administered



**1,318,512** (+ 451 last 24 hours)

Total vaccine doses administered in aged care and disability facilities as at 04 July

Number of doses administered as part of the Commonwealth aged and disability care rollout

**NSW**  
**572,496**  
(+114 daily increase)

**VIC**  
**247,702**  
(<10 daily increase)

**QLD**  
**210,020**  
(+141 daily increase)

**WA**  
**112,520**  
(+113 daily increase)

**TAS**  
**23,747**  
(<10 daily increase)

**SA**  
**86,425**  
(<10 daily increase)

**ACT**  
**17,959**  
(<10 daily increase)

**NT**  
**7,710**  
(<10 daily increase)

**39,933**

doses administered to persons residing in other territories or with missing residential information

\*Sourced from the Australian Immunisation Register. Includes all persons vaccinated at participating residential aged care, disability and related industry settings.

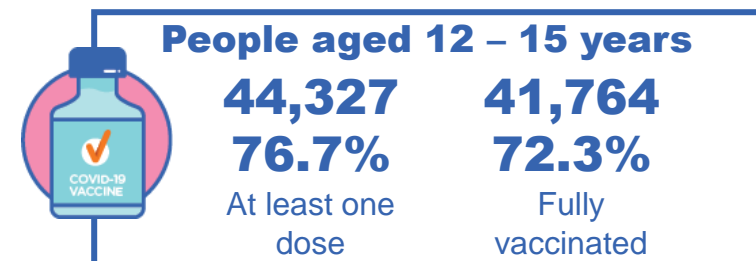
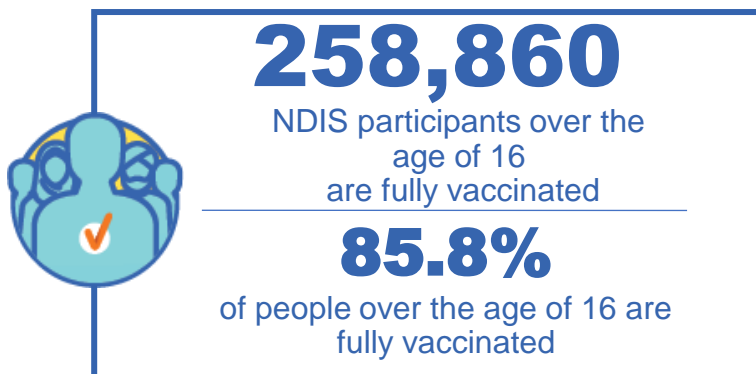
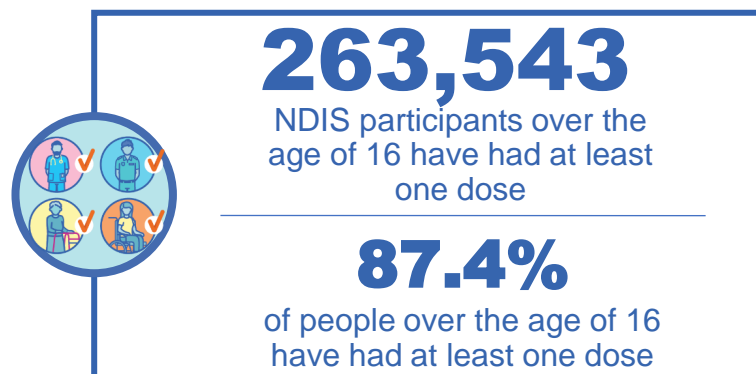
\*\*State level breakdown indicates the residential location and may not align to the state in which the vaccination occurred.

Source: Australian Immunisation Register

# National Disability Insurance Scheme (NDIS) reported vaccinations

Data as at:  
30 June 2022  
Updated weekly

Australia's COVID-19  
Vaccine Roadmap



## NDIS participant vaccinations

	People aged 16+ with at least one dose	People aged 16+ fully vaccinated	% People aged 16+ with at least one dose	% People aged 16+ fully vaccinated
ACT	4,957	4,893	<b>89.3%</b>	<b>88.2%</b>
NSW	80,634	79,372	<b>87.8%</b>	<b>86.4%</b>
NT	2,298	2,227	<b>78.7%</b>	<b>76.3%</b>
QLD	52,303	51,315	<b>85.8%</b>	<b>84.2%</b>
SA	21,582	21,083	<b>85.2%</b>	<b>83.2%</b>
TAS	6,583	6,430	<b>87.6%</b>	<b>85.6%</b>
VIC	69,988	68,840	<b>88.5%</b>	<b>87.1%</b>
WA	25,198	24,700	<b>88.8%</b>	<b>87.0%</b>
<b>National</b>	<b>263,543</b>	<b>258,860</b>	<b>87.4%</b>	<b>85.8%</b>

Source: Linkage between National Disability Insurance Agency data and the Australian Immunisation Register. Total NDIS participant numbers as at 30 May. Australian Immunisation Register data as at 29 June. Includes all participants regardless of residence type.

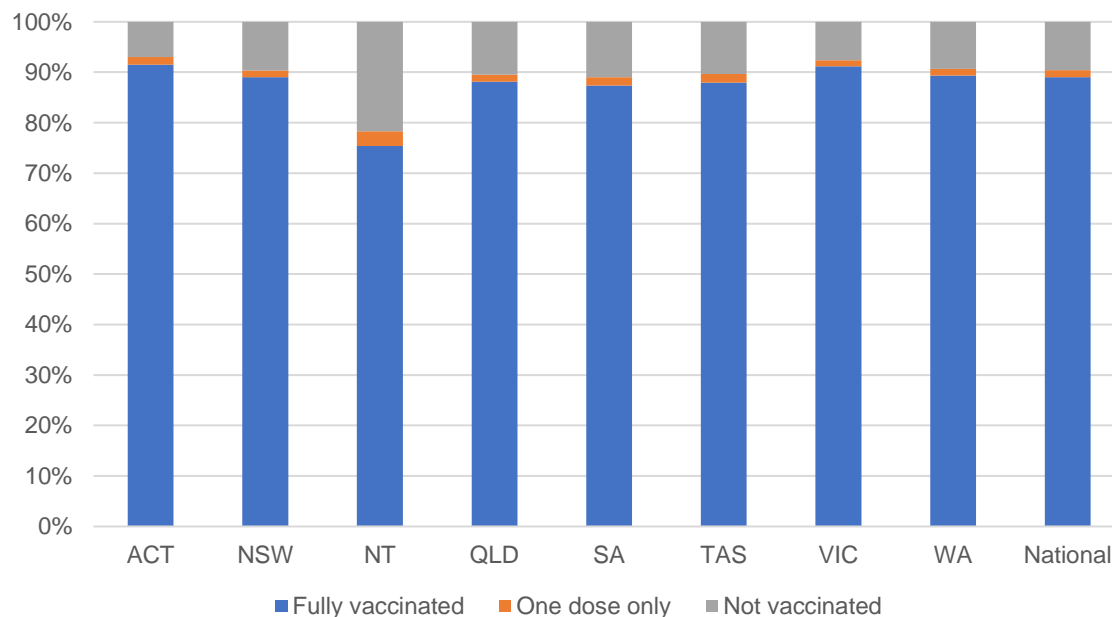
# National Disability Insurance Scheme (NDIS) reported vaccinations

Data as at:  
30 June 2022  
Updated weekly

Australia's COVID-19  
Vaccine Roadmap

NATIONAL	Total people with at least one dose	People fully vaccinated	Total number of individuals in cohort	% People with at least one dose	% People fully vaccinated
NDIS participants living in disability accommodation	21,298	20,973	23,469	90.7%	89.4%

## NDIS participants in disability and aged care accommodation



Source: Linkage between National Disability Insurance Agency data and the Australian Immunisation Register. Includes participants residing in disability accommodation only.

Source: Total NDIS participant numbers as at 30 May. Participant data as at 29 June. Australian Immunisation Register data as at 29 June. Worker data as at 30 June.

## NDIS workforce vaccinations

	NDIS workers with at least one dose	NDIS workers fully vaccinated	% NDIS workers with at least one dose	% NDIS workers fully vaccinated
NSW	127,532	122,353	98.2%	94.3%
VIC	118,277	114,994	98.5%	95.7%
QLD	71,506	70,666	97.9%	96.7%
WA	34,529	33,079	99.0%	94.8%
SA	35,855	33,971	98.5%	93.3%
TAS	12,437	12,025	98.8%	95.5%
ACT	12,329	12,302	99.8%	99.6%
NT	3,959	3,809	99.6%	95.8%
<b>TOTAL</b>	<b>416,424</b>	<b>403,199</b>	<b>98.4%</b>	<b>95.3%</b>

Source: the NDIS Commission has established a requirement for registered NDIS providers who provide intensive disability support services to report on the vaccination status of workers they employ, or otherwise engage, to deliver NDIS-funded supports and services, and who are required to be vaccinated in accordance with in-force state and territory public health orders. The statistics reflect data reported to the NDIS Commission by registered NDIS providers and should be considered indicative and subject to change

Note: Some registered NDIS providers are yet to report on the vaccination status of their workforce. The NDIS Commission is working with those providers around reporting requirements.

Remaining workers not included include those exempt from vaccination requirements, workers whose vaccination status is not yet verified by the provider (such as workers on leave) and provider reporting anomalies.

# Residential aged care vaccination rollout

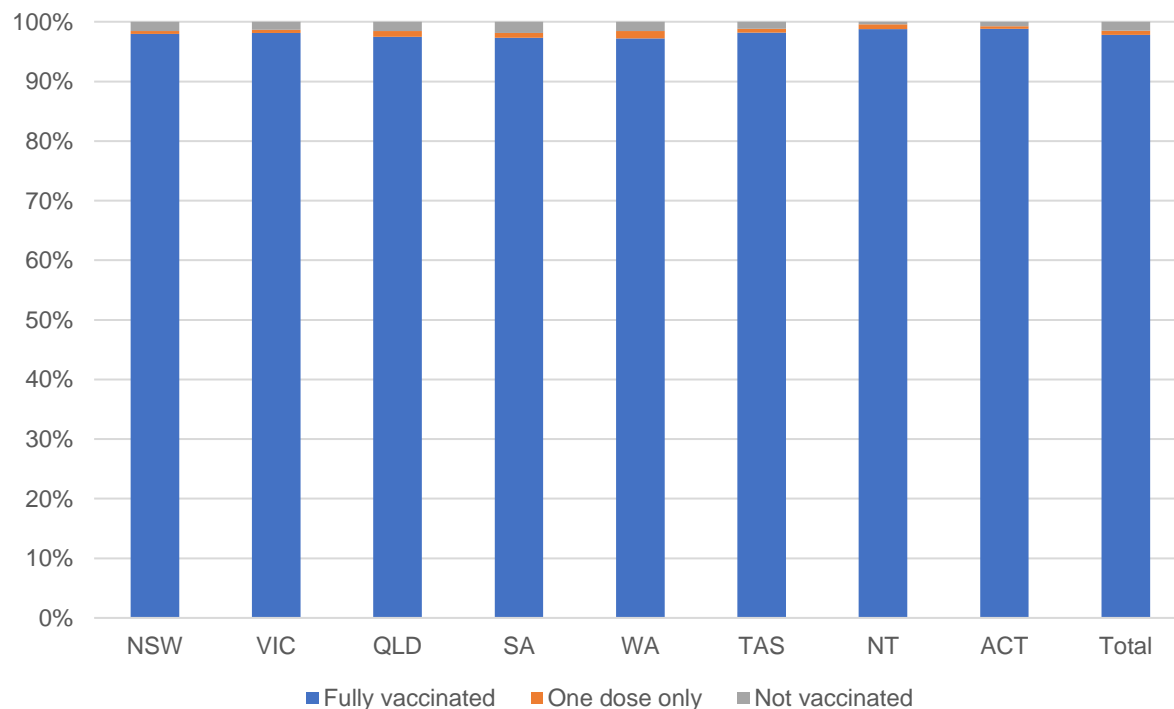
Data as at:  
30 June 2022  
Updated weekly

Residential aged care facilities status

**176,490** **177,740**

People fully vaccinated      People with at least one dose

## Aged care resident vaccinations



## Aged care worker vaccinations

Jurisdictions	Total workers with at least one dose	Workers fully vaccinated	% Workers with at least one dose	% Workers fully vaccinated
NSW	77,570	77,442	99.9%	99.7%
VIC	71,156	71,155	100.0%	100.0%
QLD	48,482	48,481	99.9%	99.8%
SA	27,012	27,005	100.0%	100.0%
WA	24,639	24,638	100.0%	100.0%
TAS	7,534	7,534	100.0%	100.0%
NT	920	920	100.0%	100.0%
ACT	2,953	2,953	100.0%	100.0%
<b>Total</b>	<b>260,266</b>	<b>260,128</b>	<b>99.9%</b>	<b>99.9%</b>

Source: Residential aged care provider self-reported COVID-19 vaccination information

\*Status updates are provided by facilities at least once per week. Reporting is updated Monday to Friday to encompass different facility updates being made on different days.

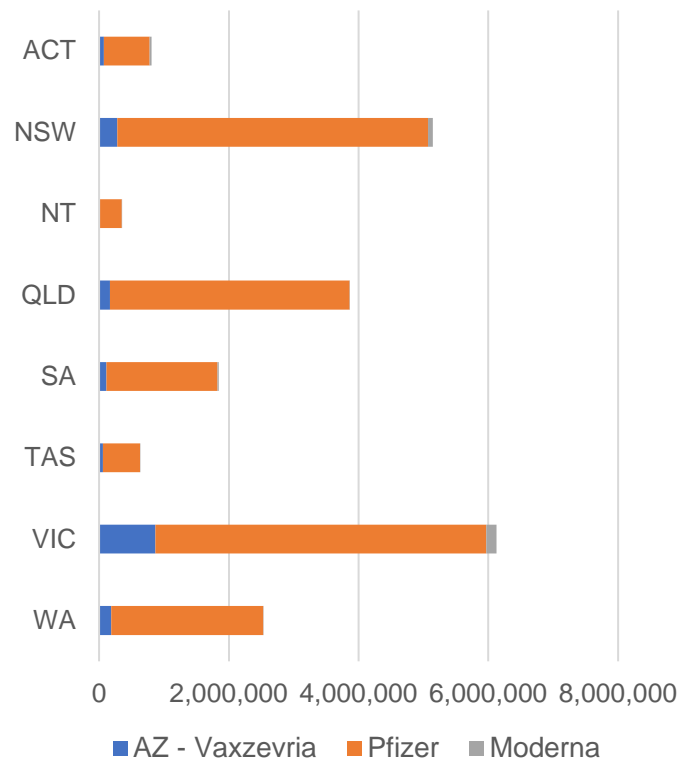
Data is sourced directly from Aged Care Service Providers and is not drawn or closely aligned with data from AIR due to inconsistencies and potential lags in uploading of records.



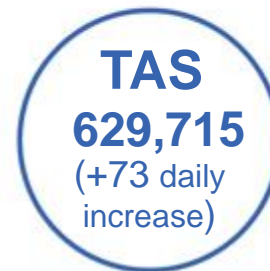
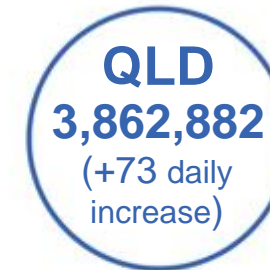
Data as at:  
04 Jul 2022

## Jurisdiction administered

Total vaccine doses administered in State and Territory clinics as at 04 July



**21,312,309** total vaccine doses administered in State and Territory clinics as at 04 July  
 + **2,330** recorded in the last 24 hours  
 + **16,829** recorded in the last 7 days

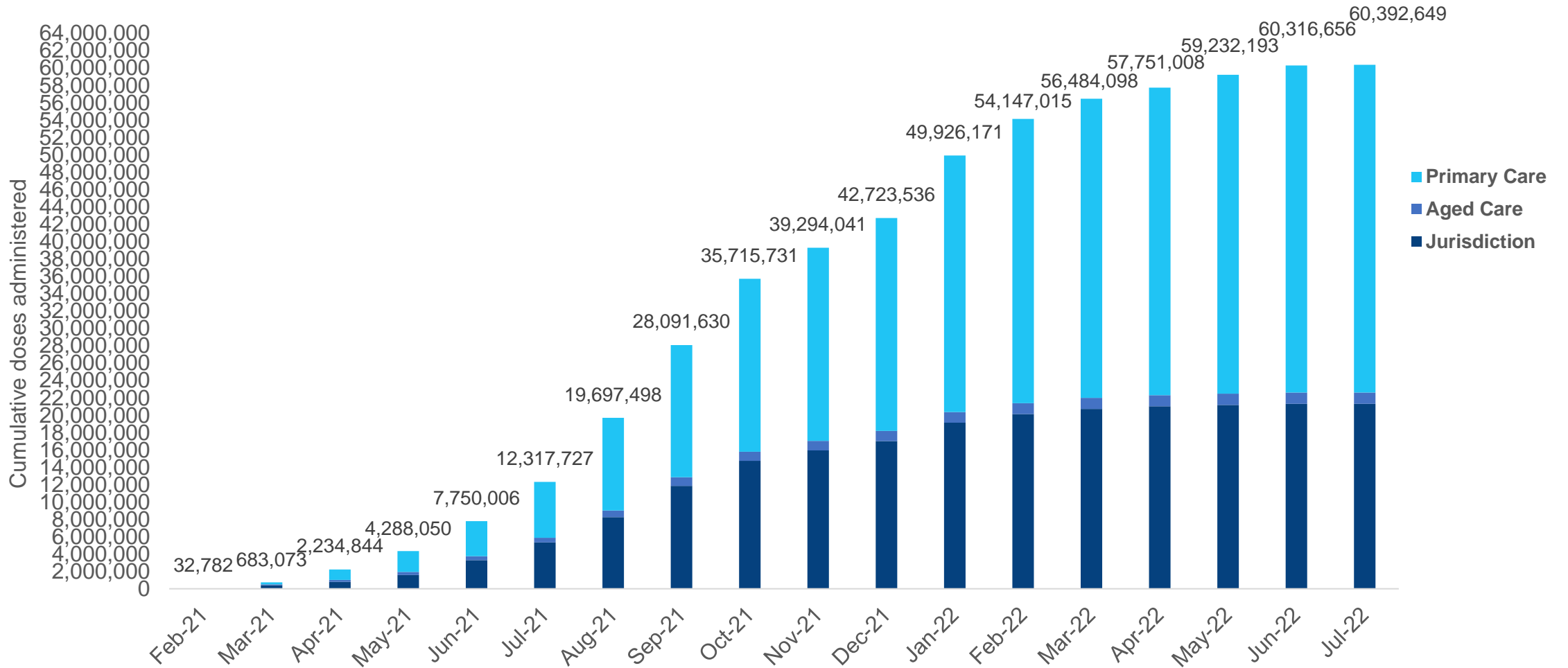


\*Sourced from the Australian Immunisation Register. Numbers are calculated as difference in daily cumulative reported numbers to allow for historical corrections.

Source: Australian Immunisation Register

# Cumulative doses administered by channel

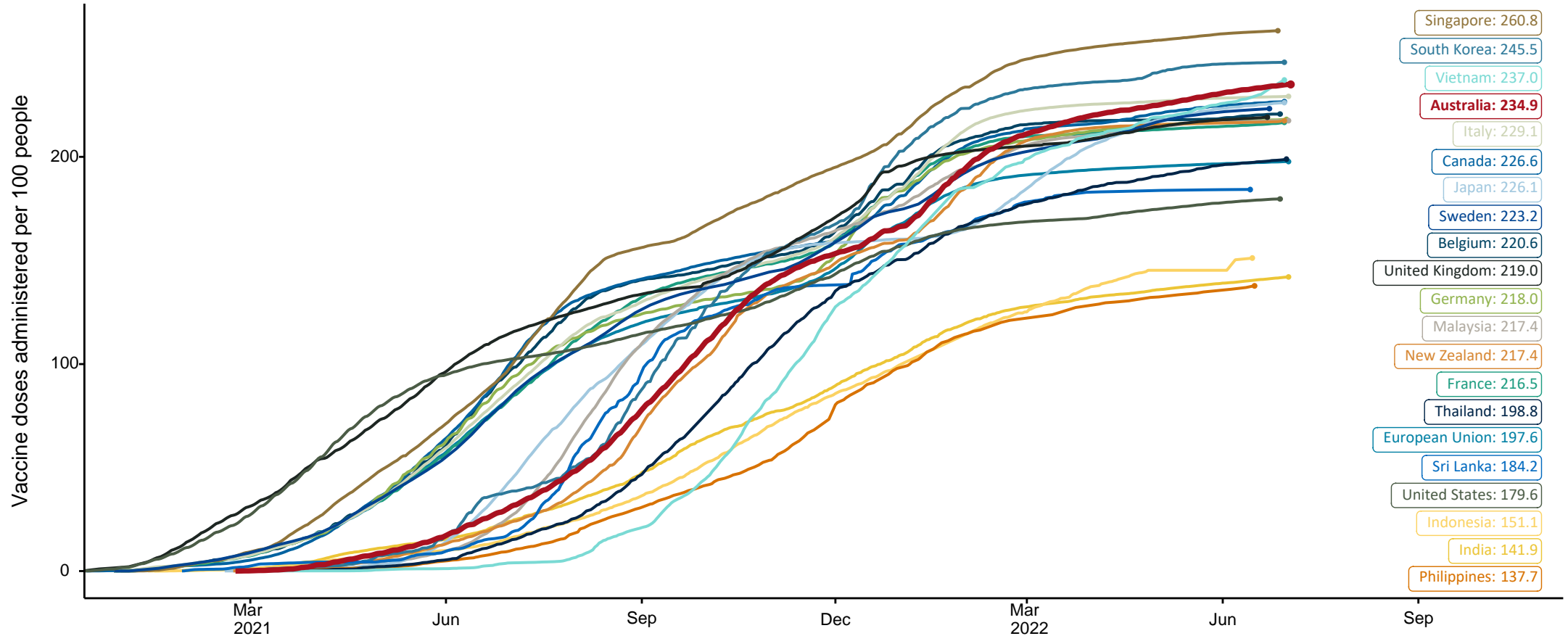
Data as at:  
04 Jul 2022



Source: Australian Immunisation Register

# COVID-19 vaccine doses per 100, Australia and select countries

Data as at:  
03 July 2022  
Updated weekly

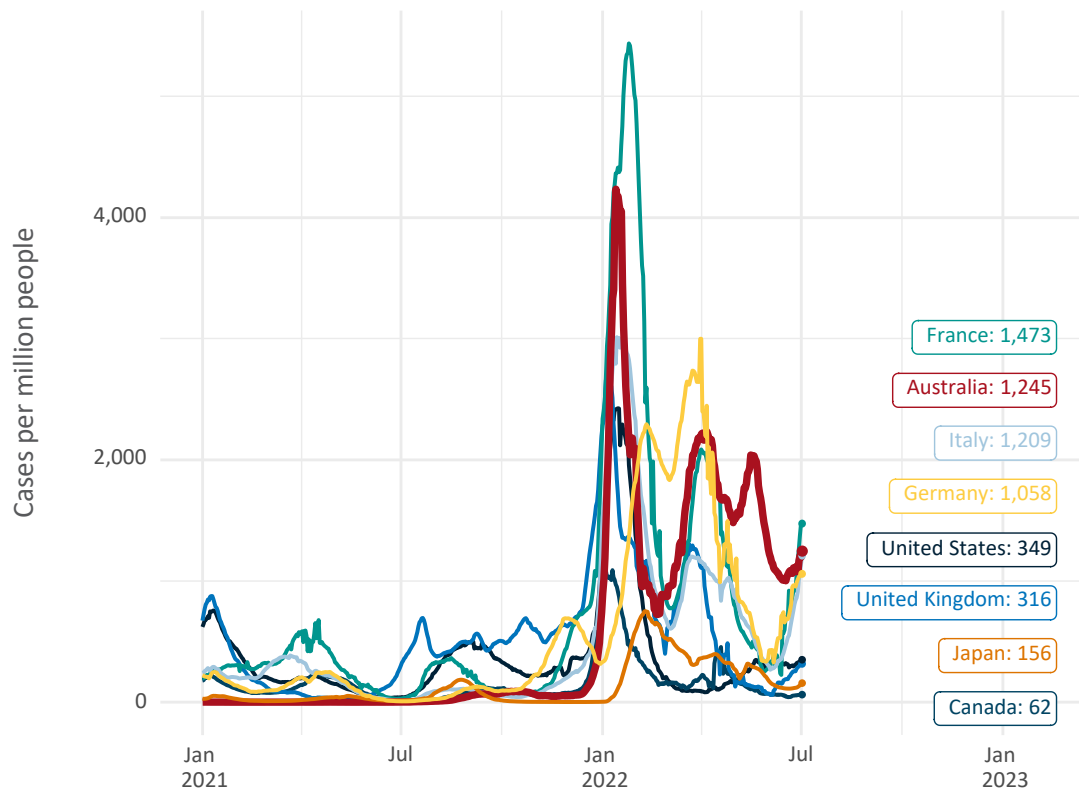


Note: From 11 January 2022, data for Australia includes all doses administered to people 5 and over. Prior to 11 January, data was for 12 and over.  
Source: Department of Health (Australia), Our World in Data (international)  
Latest data: 03 July

Data as at:  
03 July 2022  
Updated weekly

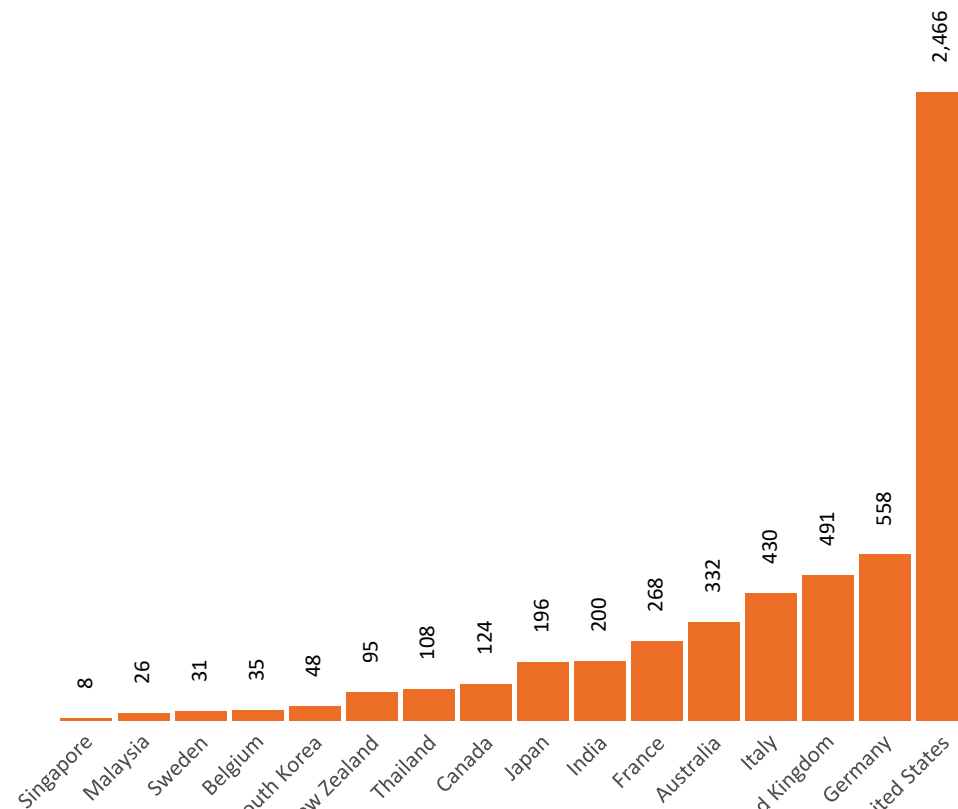
# International data – COVID-19

New daily cases per million since 2021, Australia and G7 countries  
Smoothed - 7 day average



Source: OWID  
Data downloaded: 04 Jul 2022 09:20  
Latest data: 02 Jul 2022

COVID-19 deaths in past 7 days - Australia and select countries



Source: OWID  
Data downloaded: 04 Jul 2022 09:20  
Latest data: 02 Jul 2022