



Australian Government
Operation COVID Shield

COVID-19 Vaccine Roll-out

04 July 2022

Data as at:
03 Jul 2022

Total vaccine doses



60,360,880 total vaccine doses administered nationally as at 03 July

+3,608 recorded in the last 24 hours



20,116,362

people have had at least one dose

>95%

of people over the age of 16 have had at least one dose



19,779,577

people are fully vaccinated

>95%

of people over the age of 16 are fully vaccinated



13,899,663

people over the age of 16 who have received three or more doses

NSW
18,728,715
(+942 daily increase)

VIC
15,827,851
(+724 daily increase)

QLD
11,414,215
(+729 daily increase)

WA
6,636,118
(+461 daily increase)

TAS
1,370,790
(+233 daily increase)

SA
4,204,384
(+388 daily increase)

ACT
1,582,805
(+129 daily increase)

NT
596,002
(<10 daily increase)

*Administration state breakdown indicates state in which a vaccine was administered

**Overall dose count includes instances of more than three doses per person in a small number of cases.

Source: Australian Immunisation Register

Booster Vaccinations

Data as at:
03 Jul 2022



226,410

Indigenous people who have received three or more doses

53.9%

of eligible population (420,160)



167,370

Aged Care Residents who have received three or more doses##

94.8%

of eligible population (176,490)



193,439

NDIS participants

who have received three or more doses#

75.1%

of eligible population (257,000)

22,304

NDIS residents

who have received three or more doses#

89.8%

of eligible population (24,000)



13,899,663

total people who have received three or more doses

+963 daily increase

70.5% of eligible population (19,713,583)

	Number of People	Daily Increase	% of Eligible
NSW	4,242,247	239	68.1%
VIC	3,705,354	270	72.9%
QLD	2,408,814	183	63.5%
WA	1,703,964	149	82.8%
SA	995,784	108	74.1%
TAS	318,094	48	73.1%
ACT	274,387	19	79.0%
NT	131,547	<10	78.1%

119,472

doses administered to persons residing in other territories or with missing residential information

*People may belong to multiple groups and could be represented in the above breakdowns multiple times.

NDIS participants data as at 29 June 2022.

Aged Care Residents data as at 01 July 2022.

Source: Australian Immunisation Register

Data as at:
03 Jul 2022

Winter / Fourth Doses



2,391,205 total people (16+) who have received four or more doses

+1,732 daily increase



2,107,067

People aged 65+ who have received four or more doses

58.7%

of eligible population (3,590,230)



90,316

Aged Care Residents who have received four or more doses[#]

65.7%

of eligible population (137,375)

	Number of People 16+	Daily Increase
ACT	45,928	22
NSW	774,001	469
NT	10,340	<10
QLD	455,110	405
SA	195,195	164
TAS	67,303	118
VIC	593,219	334
WA	238,401	206

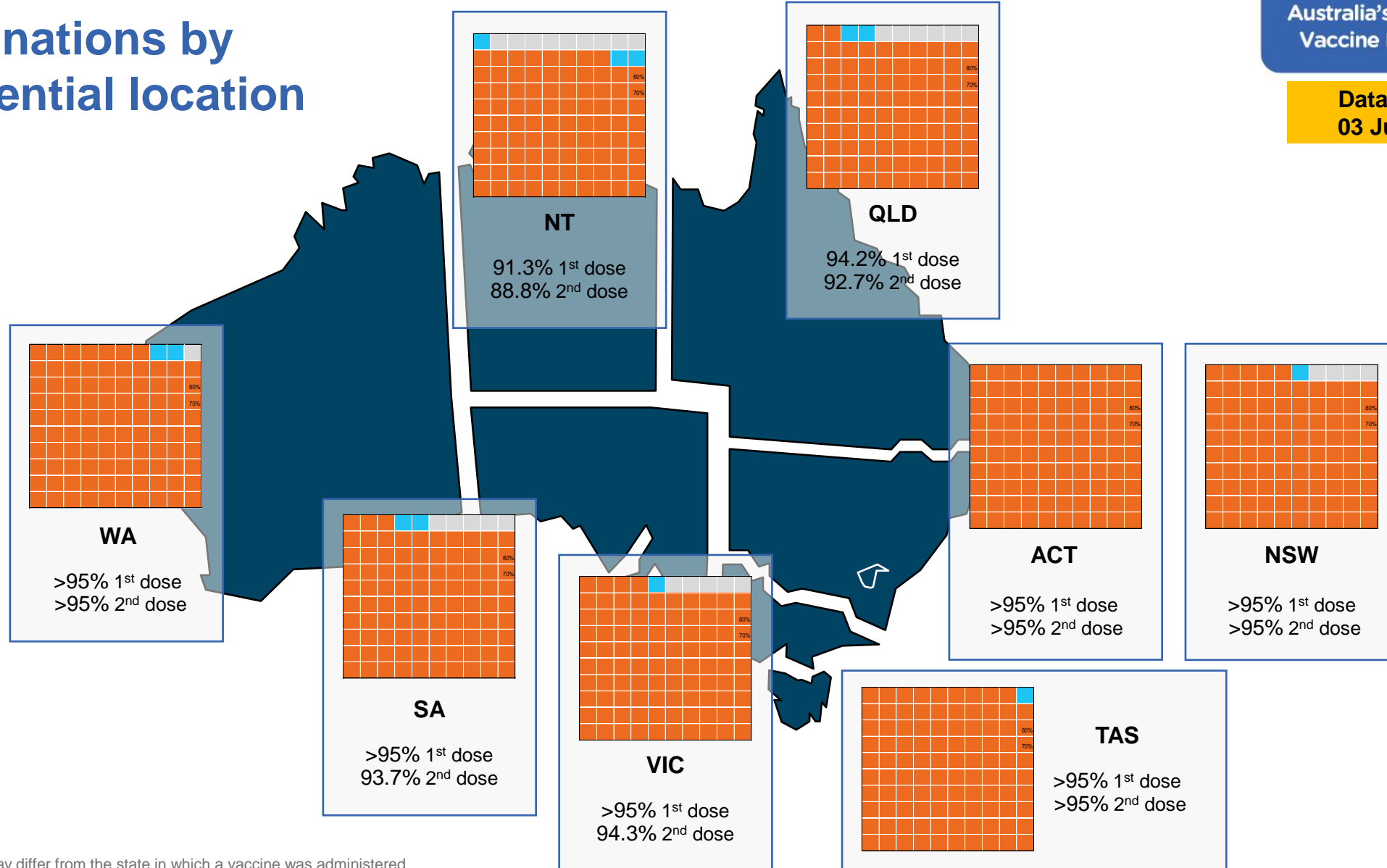
11,708 doses administered to persons residing in other territories or with missing residential information

*People become eligible for a winter booster four months after their third dose. Individuals may belong to multiple groups and could be represented in the above multiple times.
#Aged Care Residents data as at 30 June 2022.

Source: Australian Immunisation Register

Data as at:
03 Jul 2022

Vaccinations by residential location



*Residential state may differ from the state in which a vaccine was administered

Commonwealth and Jurisdiction vaccine doses administered

Data as at:
03 Jul 2022



60,360,880 total vaccine doses administered nationally as at 03 July

+ **3,608** recorded in the last 24 hours

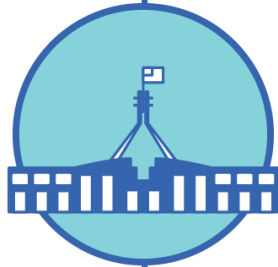


21,309,979

doses administered by state and territory facilities

+ **655**

recorded in the last 24 hours



39,050,901

doses administered by commonwealth facilities

+ **2,953**

recorded in the last 24 hours

37,732,840 total vaccine doses administered in primary care settings

1,318,061 total vaccine doses administered in aged care and disability settings

NSW	Jurisdictions	Commonwealth
Cumulative	5,143,589	13,585,126
Daily increase	<10	937

VIC	Jurisdictions	Commonwealth
Cumulative	6,134,335	9,693,516
Daily increase	<10	717

QLD	Jurisdictions	Commonwealth
Cumulative	3,862,809	7,551,406
Daily increase	30	699

WA	Jurisdictions	Commonwealth
Cumulative	2,534,135	4,101,983
Daily increase	207	254

TAS	Jurisdictions	Commonwealth
Cumulative	629,642	741,148
Daily increase	191	42

SA	Jurisdictions	Commonwealth
Cumulative	1,848,444	2,355,940
Daily increase	151	237

ACT	Jurisdictions	Commonwealth
Cumulative	809,563	773,242
Daily increase	62	67

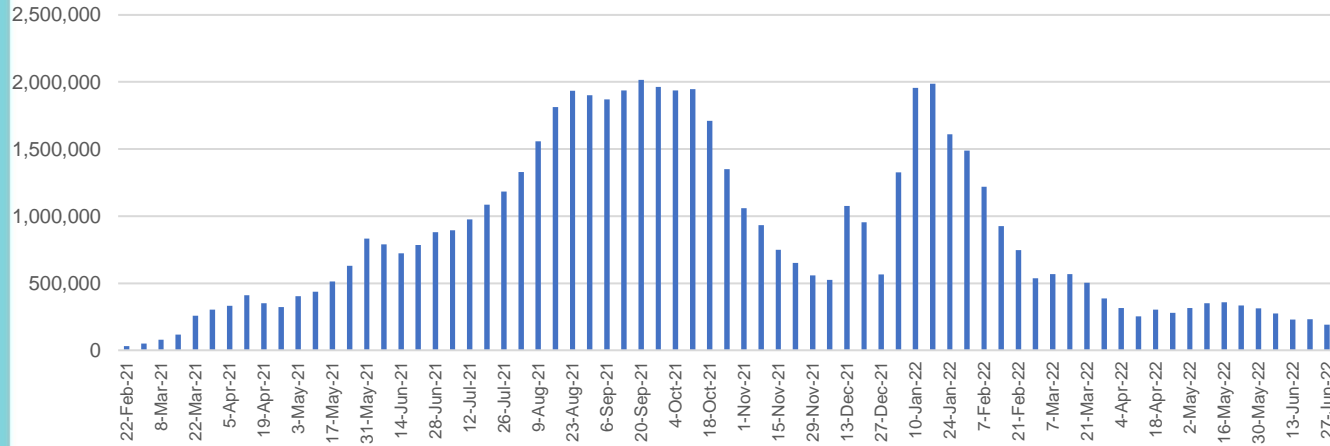
NT	Jurisdictions	Commonwealth
Cumulative	347,462	248,540
Daily increase	<10	<10

Vaccine milestone charts

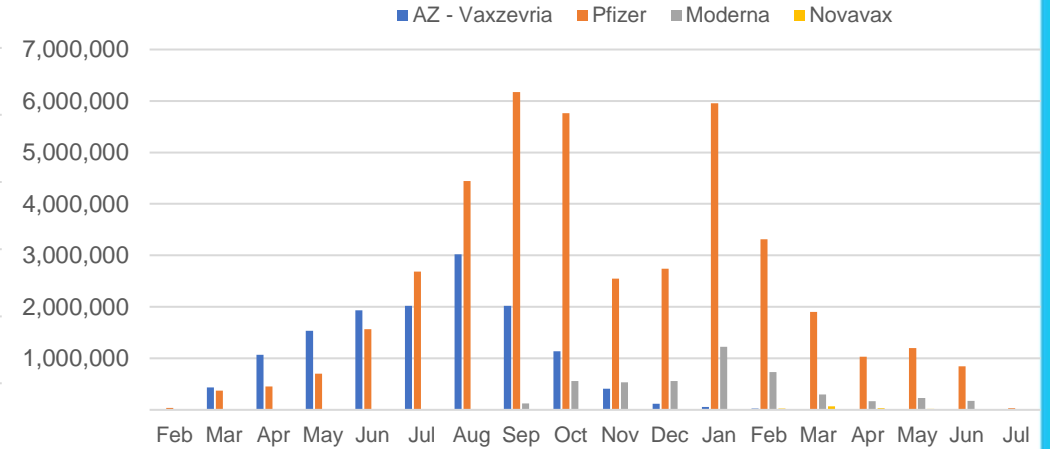
Data as at:
03 Jul 2022

Australia's COVID-19
Vaccine Roadmap

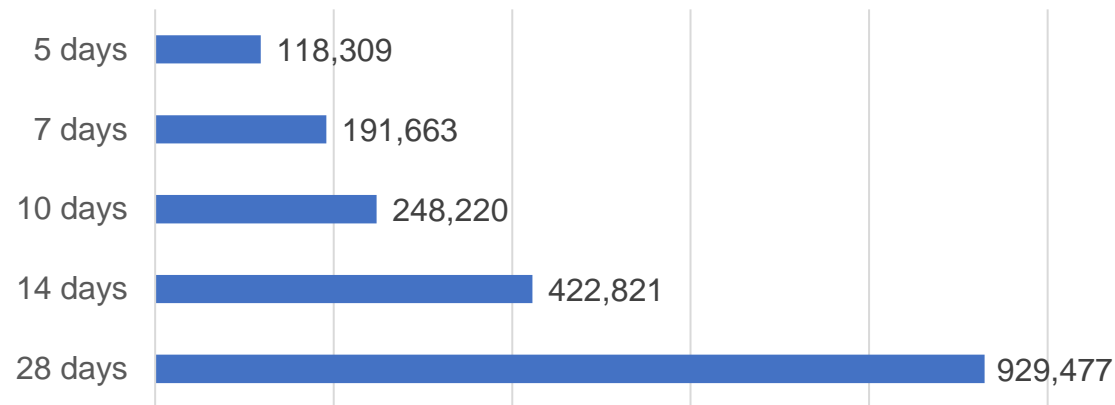
Doses Administered by Week



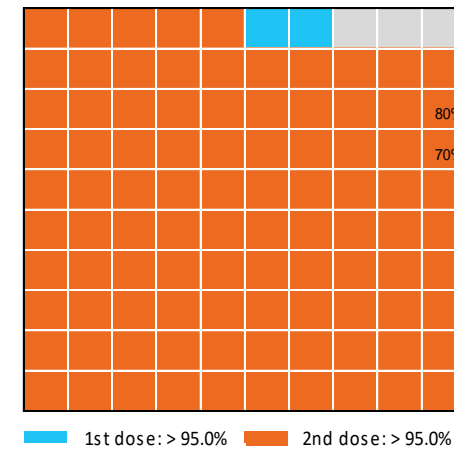
Doses by administration month and vaccine type



Doses Reported



Eligible population percentage coverage



*Each square represents 1% of the national population. Squares are filled as milestones are achieved.

*Sourced from the Australian Immunisation Register.

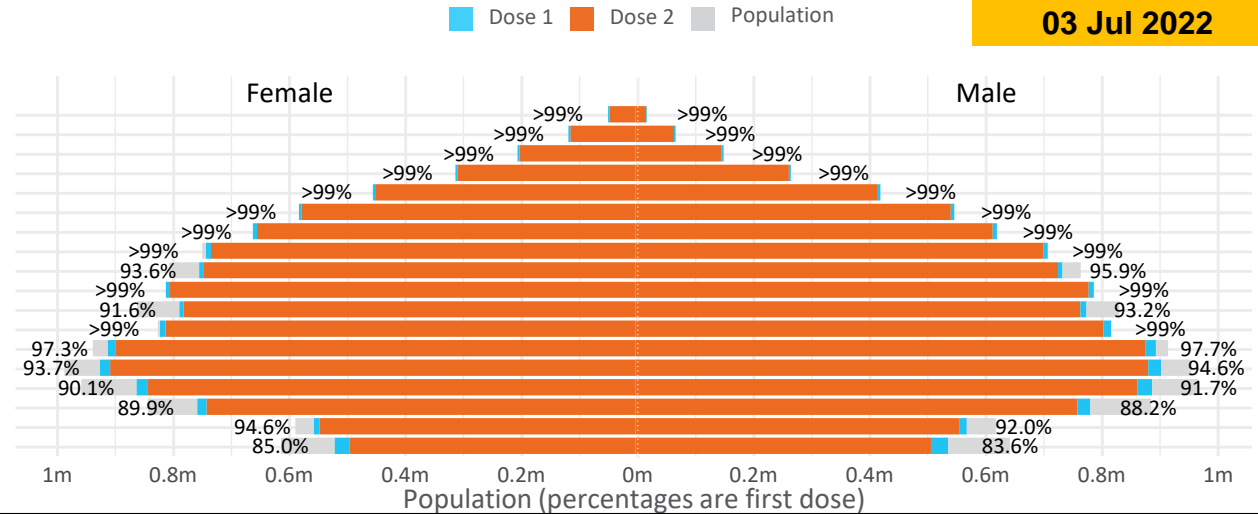
Doses by age and sex

First and second doses by age and sex

Data as at:
03 Jul 2022

	16+	50+	12-15	5-11
Dose 1	97.56% (20,116,362 doses / 20,619,959 people)	>99% (8,933,294 doses / 8,749,703 people)	84.27% (1,048,354 doses / 1,243,990 people)	52.28% (1,190,193 doses / 2,276,638 people)
Dose 2	95.92% (19,779,577 doses / 20,619,959 people)	>99% (8,825,519 doses / 8,749,703 people)	79.74% (991,969 doses / 1,243,990 people)	39.69% (903,543 doses / 2,276,638 people)

Age	Dose 1	Dose 2
95+	66,038 (>99%)	62,579 (>99%)
90-94	182,713 (>99%)	177,220 (>99%)
85-89	352,068 (>99%)	345,317 (>99%)
80-84	573,106 (>99%)	565,981 (>99%)
75-79	867,067 (>99%)	858,608 (>99%)
70-74	1,119,678 (>99%)	1,108,284 (>99%)
65-69	1,272,061 (>99%)	1,257,162 (>99%)
60-64	1,438,998 (>99%)	1,422,457 (>99%)
55-59	1,475,629 (94.9%)	1,458,933 (93.8%)
50-54	1,585,936 (>99%)	1,568,978 (>99%)
45-49	1,550,329 (92.5%)	1,531,944 (91.4%)
40-44	1,626,812 (>99%)	1,602,819 (98.9%)
35-39	1,794,629 (97.8%)	1,762,383 (96.0%)
30-34	1,820,091 (94.6%)	1,778,015 (92.4%)
25-29	1,744,089 (91.5%)	1,696,163 (89.0%)
20-24	1,531,234 (89.4%)	1,490,892 (87.1%)
16-19	1,115,884 (93.3%)	1,091,842 (91.3%)
12-15	1,048,354 (84.3%)	991,969 (79.7%)

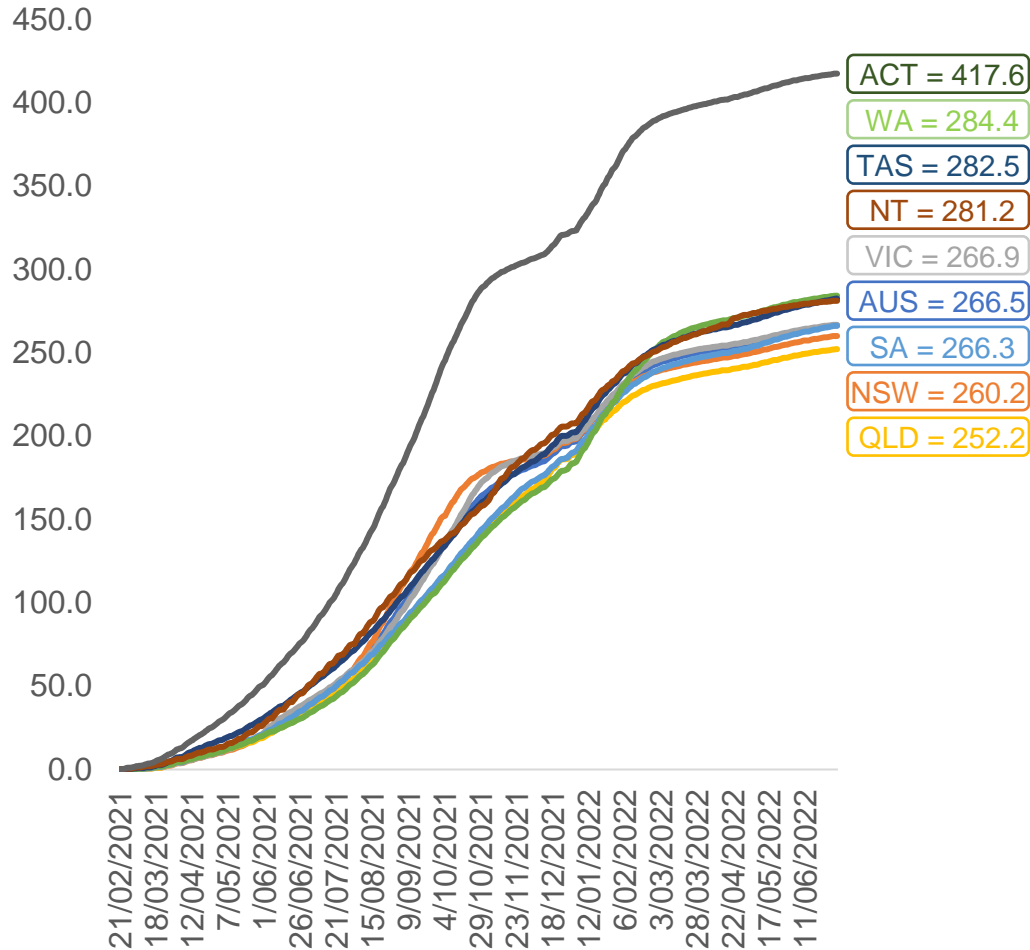


	AUS	ACT	NSW	NT	QLD	SA	TAS	VIC	WA
16 and over - dose 1	20,116,362	353,614	6,343,960	173,931	3,875,534	1,379,593	446,201	5,176,551	2,101,167
16 and over - dose 2	19,779,577	347,859	6,245,701	169,253	3,811,741	1,350,282	437,190	5,097,919	2,070,116
16 and over - population	20,619,959*	344,037	6,565,651	190,571	4,112,707	1,440,400	440,172	5,407,574	2,114,978
16 and over % with dose 1	97.56%	>99%	96.62%	91.27%	94.23%	95.78%	>99%	95.73%	>99%
16 and over % with dose 2	95.92%	>99%	95.13%	88.81%	92.68%	93.74%	>99%	94.27%	97.88%
5 to 11 - dose 1	1,190,193	31,709	355,422	13,136	206,162	83,571	28,444	324,148	140,030
5 to 11 - dose 2	903,543	27,369	276,071	8,805	150,422	63,832	23,202	246,683	102,548
5 to 11 - population	2,276,638	39,789	716,460	24,750	478,731	148,816	45,033	578,499	244,154
5 to 11 % with dose 1	52.28%	79.69%	49.61%	53.07%	43.06%	56.16%	63.16%	56.03%	57.35%
5 to 11 % with dose 2	39.69%	68.79%	38.53%	35.58%	31.42%	42.89%	51.52%	42.64%	42.00%
12 to 15 - dose 1	1,048,354	20,143	322,344	10,731	205,427	68,187	22,828	273,928	115,414
12 to 15 - dose 2	991,969	19,581	307,851	9,684	191,772	64,411	21,711	262,035	106,803
12 to 15 - population	1,243,990	19,693	390,330	13,060	270,146	82,747	26,308	308,611	132,869
12 to 15 % with dose 1	84.27%	>99%	82.58%	82.17%	76.04%	82.40%	86.77%	88.76%	86.86%
12 to 15 % with dose 2	79.74%	>99%	78.87%	74.15%	70.99%	77.84%	82.53%	84.91%	80.38%

*National population will not equal sum of listed jurisdictions due to a small number of people counted in national population residing in some 'other' territories. Sum of state doses will not add to national total as some records are unable to be geocoded to a State or Territory.
Doses sourced from Australian Immunisation Register, population from ABS ERP June 2020

Vaccinations by location

Cumulative total doses administered vs eligible state populations*

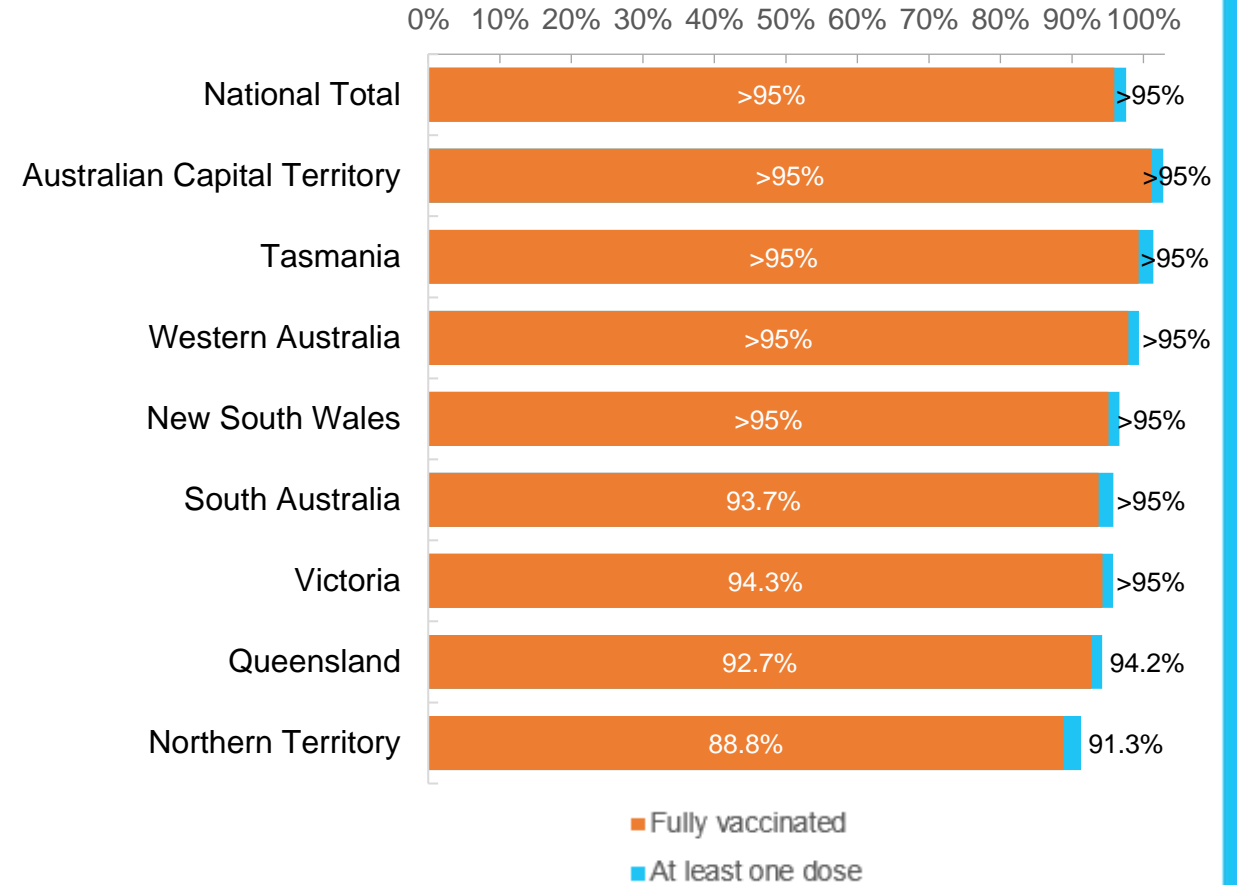


*Not an indication of percentage vaccinated, numbers will exceed 100 due to multiple doses required per person of the population. All doses are included for those aged 12 and above, and are based on vaccination provider location.

Data as at:
03 Jul 2022

Australia's COVID-19
Vaccine Roadmap

First and Second Doses by residential location



Aboriginal and Torres Strait Islander peoples

Number of people vaccinated

Data as at:
28 Jun 2022
Updated weekly

Australia's COVID-19
Vaccine Roadmap



443,113

people over the age of 16
have had at least one dose

85.0%

of people over the age of 16
have had at least one dose



424,811

people over the age of 16
are fully vaccinated

81.5%

of people over the age of 16 are
fully vaccinated



People aged 12 – 15 years

47,872

42,003

67.8%

59.5%

At least one dose

Fully vaccinated

178 Aboriginal community controlled health services (ACCHS)

0#	50	27	44	12	3	21	21
ACT	NSW	NT	QLD	SA	TAS	VIC	WA

Medicare Address State ^{##}	Individuals Dose 1	Individuals Dose 1 %	Individuals Dose 2	Individuals Dose 2 %
Australian Capital Territory	4,796	91.8%	4,674	89.5%
New South Wales	135,834	87.3%	132,792	85.4%
Northern Territory	41,467	89.7%	39,494	85.4%
Queensland	116,516	81.8%	111,181	78.1%
South Australia	20,051	80.5%	18,681	75.0%
Tasmania	13,878	88.8%	13,476	86.2%
Victoria	35,636	90.4%	34,853	88.4%
Western Australia	53,544	86.8%	49,909	80.9%
Unknown/Other Territories	21,391	70.4%	19,751	65.0%
Totals	443,113	85.0%	424,811	81.5%

Source: Australian Immunisation Register

*Identifying as Aboriginal and Torres Strait Islander is optional and the estimated population may be under reported.

**Includes all Aboriginal and Torres Strait Islander peoples who have received a vaccination, not limited to those administered in an ACCHS setting

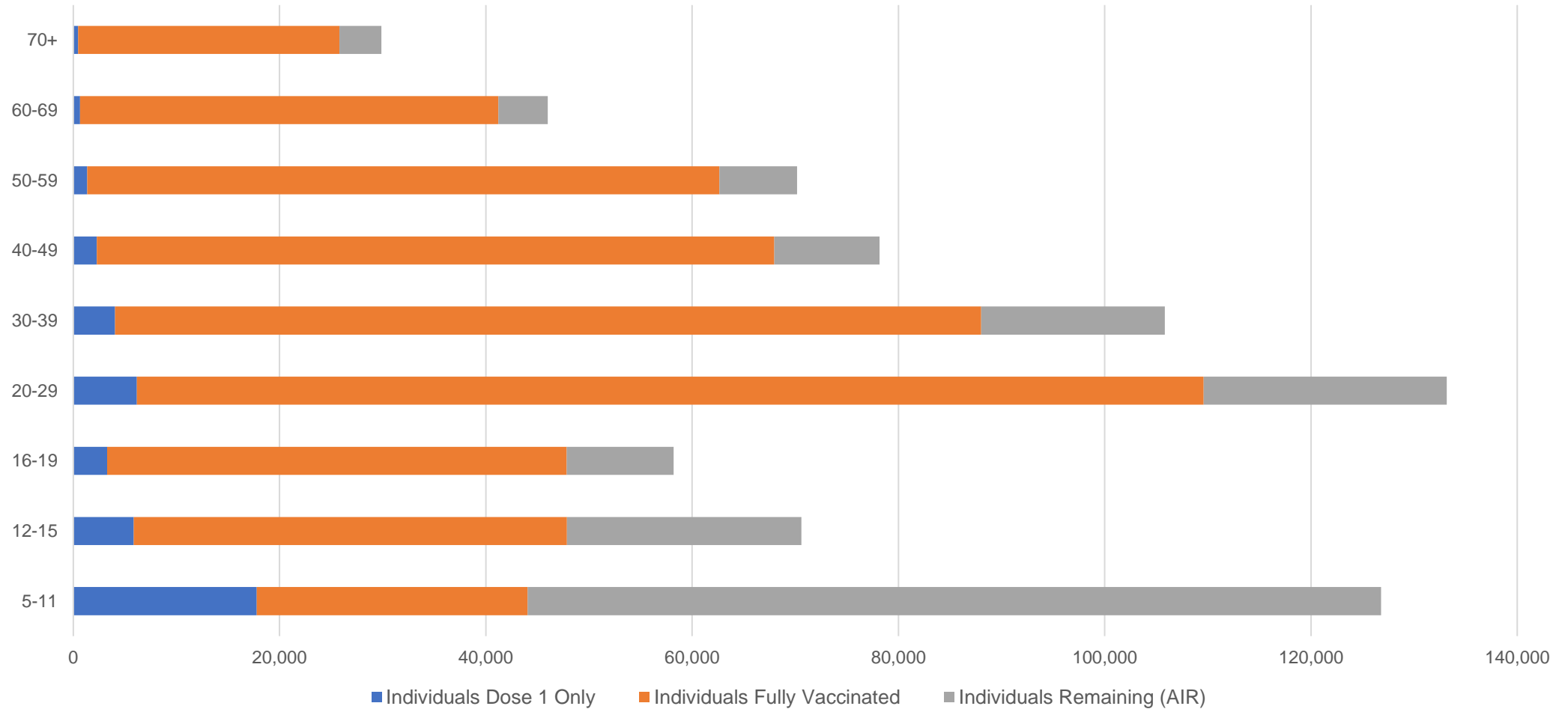
#ACCHS in the ACT are currently operating as a Commonwealth Vaccine Clinics so not included to avoid double counting

##The above table includes all identified Aboriginal and Torres Strait Islander people who are aged 16 and above by their state of residence.

Aboriginal and Torres Strait Islander peoples Number of people vaccinated by age

Data as at:
28 Jun 2022
Updated weekly

Australia's COVID-19
Vaccine Roadmap



Source: Australian Immunisation Register

Commonwealth primary care

Data as at:
03 Jul 2022

Australia's COVID-19
Vaccine Roadmap



Primary care vaccine administration sites

5,701	128	178	3,613
GPs	CVCs	ACCHS	Pharmacies



37,732,840 total vaccine doses administered
primary care settings as at 03 July
+ 2,942 recorded in the last 24 hours

Primary care vaccinations by provider type

	Doses administered	Daily increase	7 day increase
General Practice* includes other Commonwealth	30,140,198	1,597	115,281
Pharmacy	7,592,642	1,345	56,348



318,039

doses administered to persons
residing in other territories or with
missing residential information

*General practice includes Commonwealth Vaccination Clinics, Aboriginal Community Health Centres, Royal Flying Doctor Service and other Commonwealth vaccination facilities

Source: Australian Immunisation Register

Data as at:
03 Jul 2022

Commonwealth aged care and disability doses administered



1,318,061 (+11 last 24 hours)

Total vaccine doses administered in aged care and disability facilities as at 03 July

Number of doses administered as part of the Commonwealth aged and disability care rollout

NSW
572,382
(**<10** daily increase)

VIC
247,700
(**<10** daily increase)

QLD
209,879
(**<10** daily increase)

WA
112,407
(**<10** daily increase)

TAS
23,763
(**<10** daily increase)

SA
86,439
(**<10** daily increase)

ACT
17,965
(**<10** daily increase)

NT
7,710
(**<10** daily increase)

39,816

doses administered to persons residing in other territories or with missing residential information

*Sourced from the Australian Immunisation Register. Includes all persons vaccinated at participating residential aged care, disability and related industry settings.

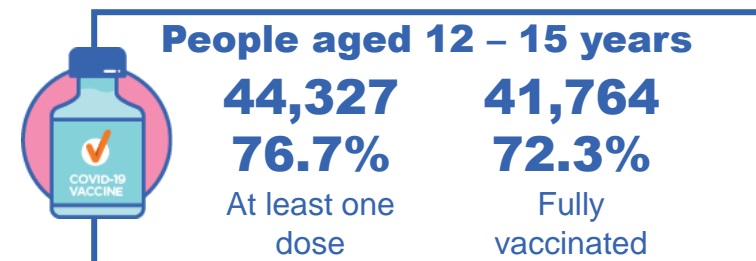
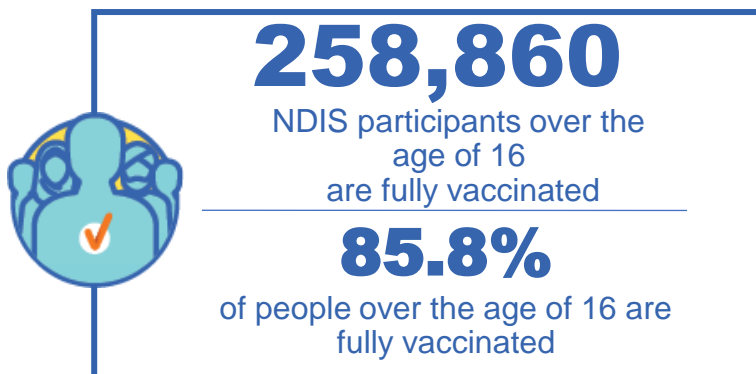
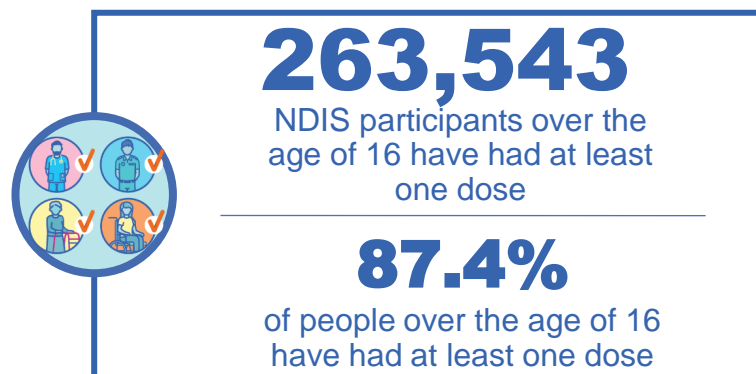
**State level breakdown indicates the residential location and may not align to the state in which the vaccination occurred.

Source: Australian Immunisation Register

National Disability Insurance Scheme (NDIS) reported vaccinations

Data as at:
30 June 2022
Updated weekly

Australia's COVID-19
Vaccine Roadmap



NDIS participant vaccinations

	People aged 16+ with at least one dose	People aged 16+ fully vaccinated	% People aged 16+ with at least one dose	% People aged 16+ fully vaccinated
ACT	4,957	4,893	89.3%	88.2%
NSW	80,634	79,372	87.8%	86.4%
NT	2,298	2,227	78.7%	76.3%
QLD	52,303	51,315	85.8%	84.2%
SA	21,582	21,083	85.2%	83.2%
TAS	6,583	6,430	87.6%	85.6%
VIC	69,988	68,840	88.5%	87.1%
WA	25,198	24,700	88.8%	87.0%
National	263,543	258,860	87.4%	85.8%

Source: Linkage between National Disability Insurance Agency data and the Australian Immunisation Register. Total NDIS participant numbers as at 30 May. Australian Immunisation Register data as at 29 June. Includes all participants regardless of residence type.

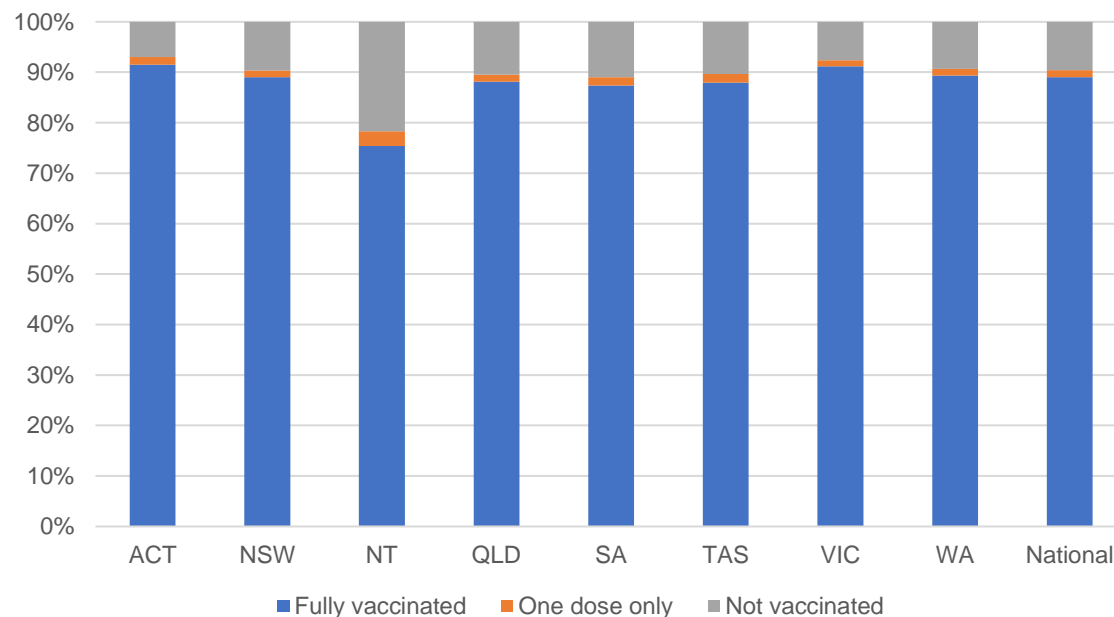
National Disability Insurance Scheme (NDIS) reported vaccinations

Data as at:
30 June 2022
Updated weekly

Australia's COVID-19
Vaccine Roadmap

NATIONAL	Total people with at least one dose	People fully vaccinated	Total number of individuals in cohort	% People with at least one dose	% People fully vaccinated
NDIS participants living in disability accommodation	21,298	20,973	23,469	90.7%	89.4%

NDIS participants in disability and aged care accommodation



Source: Linkage between National Disability Insurance Agency data and the Australian Immunisation Register. Includes participants residing in disability accommodation only.

Source: Total NDIS participant numbers as at 30 May. Participant data as at 29 June. Australian Immunisation Register data as at 29 June. Worker data as at 30 June.

NDIS workforce vaccinations

	NDIS workers with at least one dose	NDIS workers fully vaccinated	% NDIS workers with at least one dose	% NDIS workers fully vaccinated
NSW	127,532	122,353	98.2%	94.3%
VIC	118,277	114,994	98.5%	95.7%
QLD	71,506	70,666	99.9%	96.7%
WA	34,529	33,079	99.0%	94.8%
SA	35,855	33,971	98.5%	93.3%
TAS	12,437	12,025	98.8%	95.5%
ACT	12,329	12,302	99.8%	99.6%
NT	3,959	3,809	99.6%	95.8%
TOTAL	416,424	403,199	98.4%	95.3%

Source: the NDIS Commission has established a requirement for registered NDIS providers who provide intensive disability support services to report on the vaccination status of workers they employ, or otherwise engage, to deliver NDIS-funded supports and services, and who are required to be vaccinated in accordance with in-force state and territory public health orders. The statistics reflect data reported to the NDIS Commission by registered NDIS providers and should be considered indicative and subject to change

Note: Some registered NDIS providers are yet to report on the vaccination status of their workforce. The NDIS Commission is working with those providers around reporting requirements.

Remaining workers not included include those exempt from vaccination requirements, workers whose vaccination status is not yet verified by the provider (such as workers on leave) and provider reporting anomalies.

Residential aged care vaccination rollout

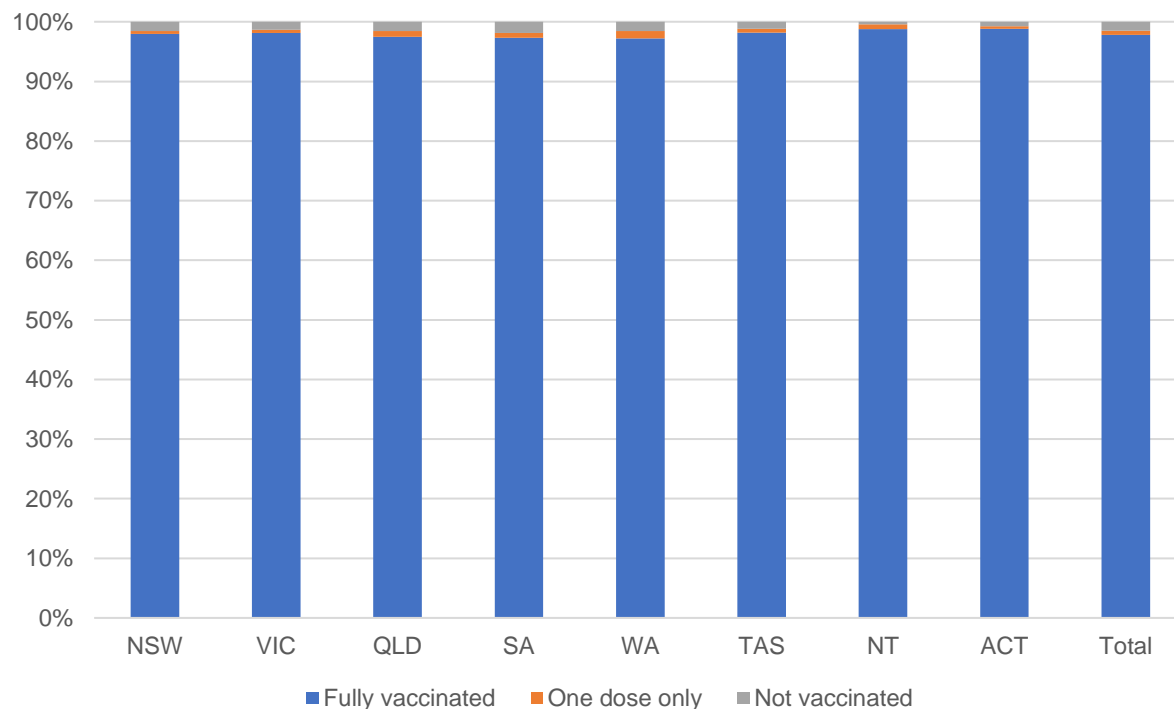
Data as at:
30 June 2022
Updated weekly

Residential aged care facilities status

176,490 **177,740**

People fully vaccinated People with at least one dose

Aged care resident vaccinations



Aged care worker vaccinations

Jurisdictions	Total workers with at least one dose	Workers fully vaccinated	% Workers with at least one dose	% Workers fully vaccinated
NSW	77,570	77,442	99.9%	99.7%
VIC	71,156	71,155	100.0%	100.0%
QLD	48,482	48,481	99.9%	99.8%
SA	27,012	27,005	100.0%	100.0%
WA	24,639	24,638	100.0%	100.0%
TAS	7,534	7,534	100.0%	100.0%
NT	920	920	100.0%	100.0%
ACT	2,953	2,953	100.0%	100.0%
Total	260,266	260,128	99.9%	99.9%

Source: Residential aged care provider self-reported COVID-19 vaccination information

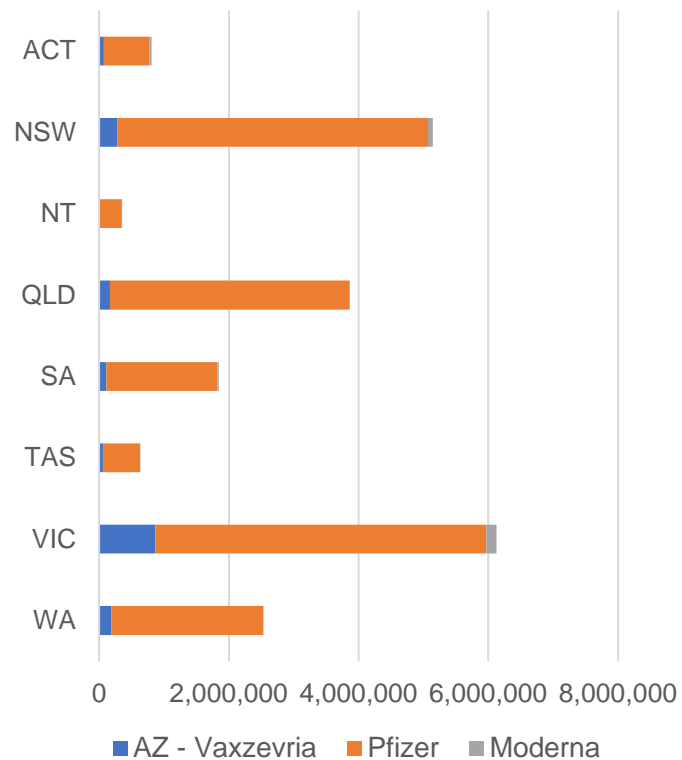
*Status updates are provided by facilities at least once per week. Reporting is updated Monday to Friday to encompass different facility updates being made on different days.

Data is sourced directly from Aged Care Service Providers and is not drawn or closely aligned with data from AIR due to inconsistencies and potential lags in uploading of records.

Data as at:
03 Jul 2022

Jurisdiction administered

Total vaccine doses administered in State and Territory clinics as at 03 July



21,309,979 total vaccine doses administered in State and Territory clinics as at 03 July
 + **655** recorded in the last 24 hours
 + **17,513** recorded in the last 7 days

NSW
5,143,589
 (<10 daily increase)

VIC
6,134,335
 (<10 daily increase)

QLD
3,862,809
 (+30 daily increase)

WA
2,534,135
 (+207 daily increase)

TAS
629,642
 (+191 daily increase)

SA
1,848,444
 (+151 daily increase)

ACT
809,563
 (+62 daily increase)

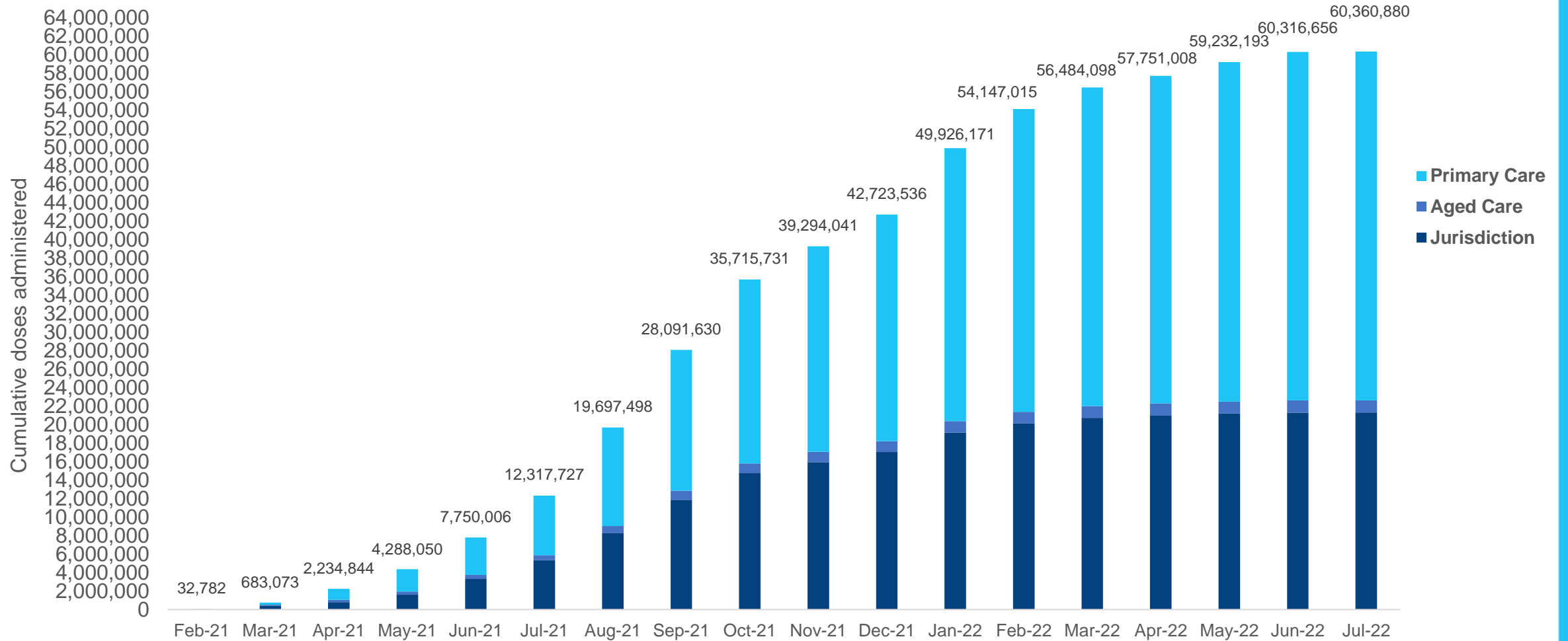
NT
347,462
 (<10 daily increase)

*Sourced from the Australian Immunisation Register. Numbers are calculated as difference in daily cumulative reported numbers to allow for historical corrections.

Source: Australian Immunisation Register

Cumulative doses administered by channel

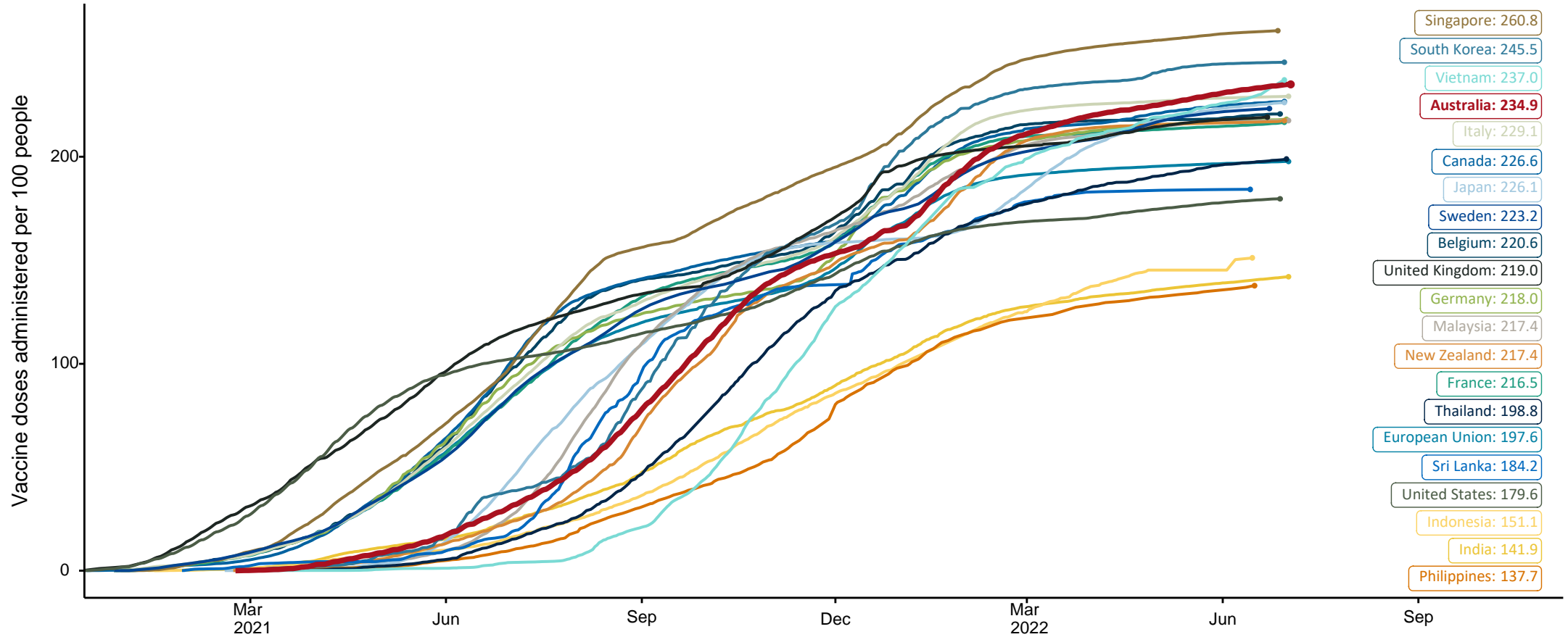
Data as at:
03 Jul 2022



Source: Australian Immunisation Register

COVID-19 vaccine doses per 100, Australia and select countries

Data as at:
03 July 2022
Updated weekly

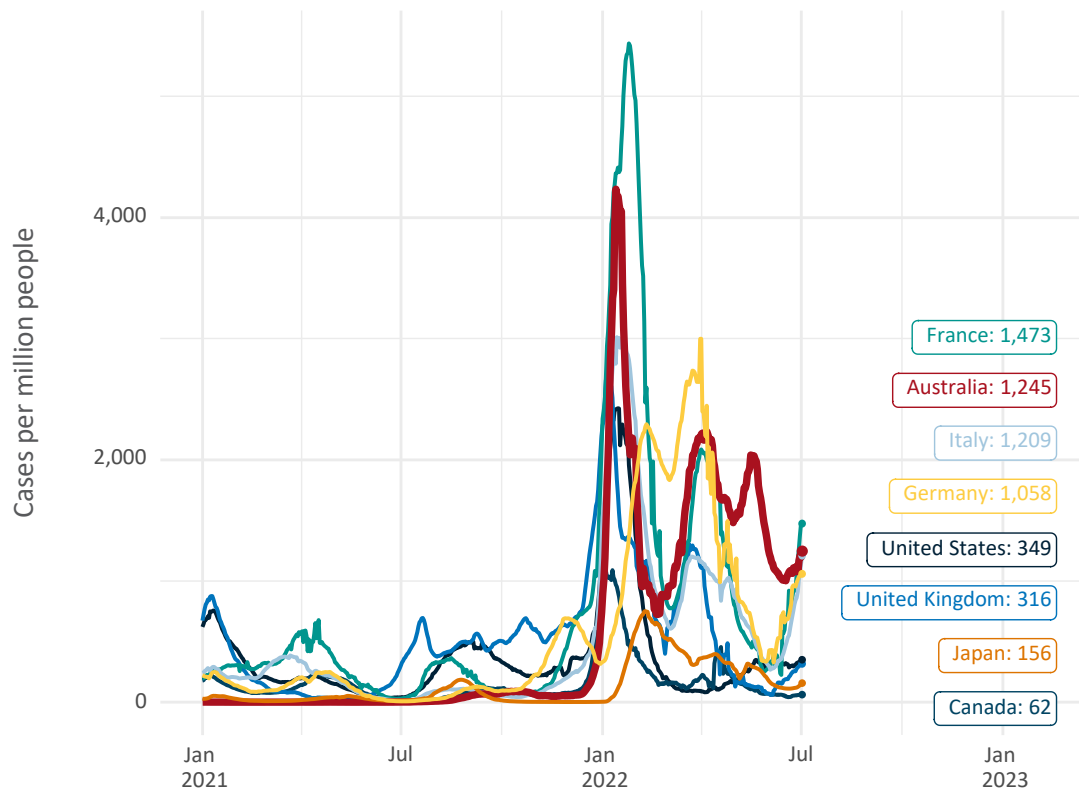


Note: From 11 January 2022, data for Australia includes all doses administered to people 5 and over. Prior to 11 January, data was for 12 and over.
Source: Department of Health (Australia), Our World in Data (international)
Latest data: 03 July

Data as at:
03 July 2022
Updated weekly

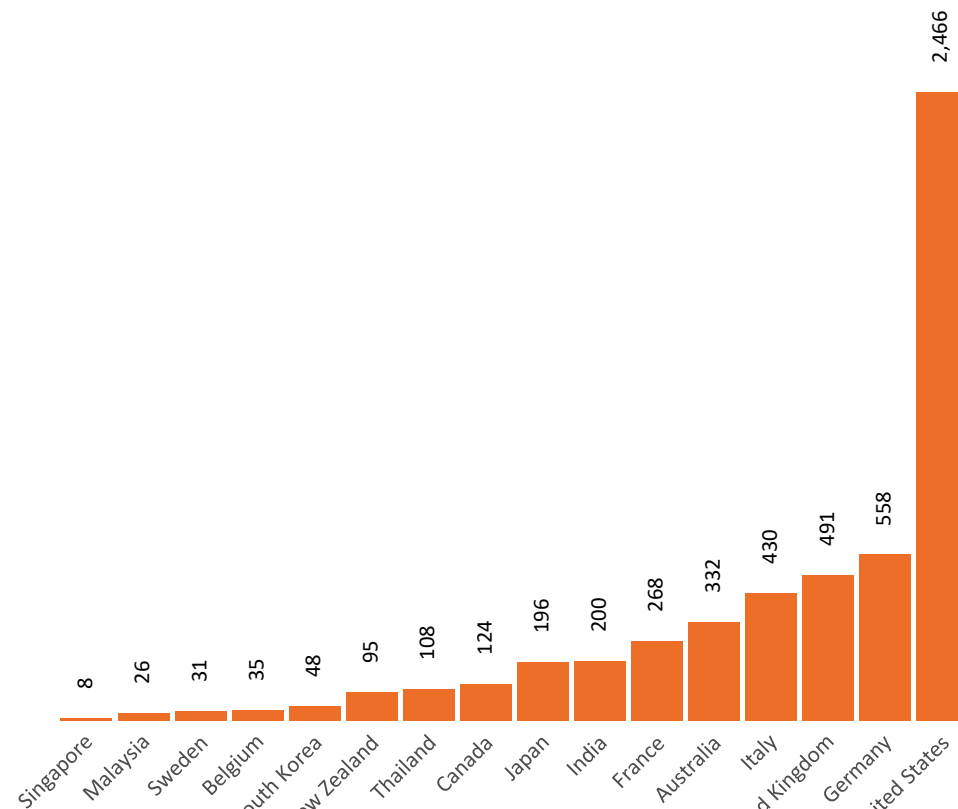
International data – COVID-19

New daily cases per million since 2021, Australia and G7 countries
Smoothed - 7 day average



Source: OWID
Data downloaded: 04 Jul 2022 09:20
Latest data: 02 Jul 2022

COVID-19 deaths in past 7 days - Australia and select countries



Source: OWID
Data downloaded: 04 Jul 2022 09:20
Latest data: 02 Jul 2022

Administration and Utilisation

Doses as at 03 July 2022

	Ordered	Available	Administered	Stock on Hand at Sites	Estimated Dose Utilisation %
	Up to 03/07/22	Delivered up to 26/06/22 including redistributions	Up to 03/07/22		(see note)
NSW	6,114,172	6,113,472	5,143,589	358,536	94%
VIC	7,008,054	7,006,754	6,134,335	232,799	98%
QLD	4,847,402	4,805,742	3,862,809	462,510	90%
WA	2,685,998	2,684,878	2,534,135	81,474	Fully utilised
SA	2,152,620	2,123,220	1,848,444	97,351	97%
TAS	656,390	656,390	629,642	337	Fully utilised
NT	424,748	414,560	347,462	30,148	94%
ACT	651,586	651,586	809,563	6,154	Fully utilised
Jurisdiction delivered total	24,540,970	24,456,602	21,309,979	1,269,309	97%
Commonwealth Vaccination Providers	1,448,088	1,445,700	1,318,061	8,379	Fully utilised
Commonwealth Primary Care & Other	59,637,114	59,258,598	37,732,840	15,645,455	74%
Total	85,626,172	85,160,900	60,360,880	16,923,143	81%

About this data

- Ordered – Total doses delivered or in transit to sites. Based on logistics provider data. This figure includes doses allocated for administration in the coming week.
- Available – total doses that could have been administered to date, less doses re-distributed from States & Territories to Primary Care or Commonwealth Vaccination Providers (i.e., does not include those deliveries recently received, and intended for use in the coming week).
- Administered – Doses administered as at 03 July 2022.
- Stock on Hand at Sites – Available doses minus Administered doses and a small % wastage.
- The dose utilisation is calculated based on the total doses administered and a small % wastage in line with international standards in relation to total available doses.
- For Commonwealth Vaccination Providers, the doses available for administration is for the full period (up to 03 July 2022).
- Commonwealth Vaccination Providers utilisation is not provided as the in-reach rollout is demand-based.