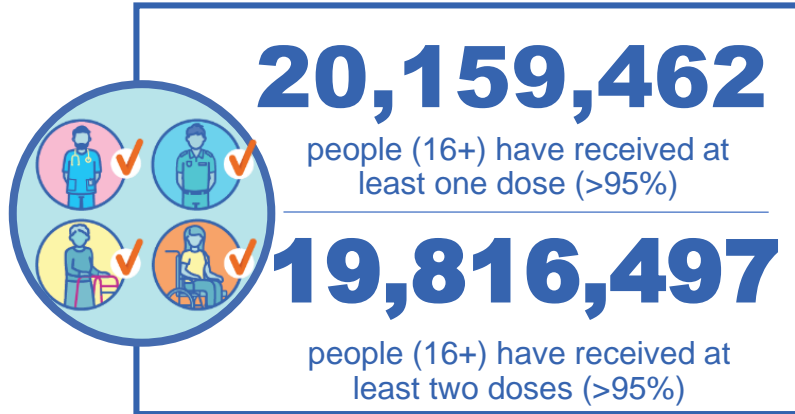


COVID-19 Vaccine Roll-out

30 July 2022

Data as at:
29 Jul 2022

Total vaccine doses



62,277,184 total vaccine doses administered nationally as at 29 July

+74,921 recorded in the last 24 hours

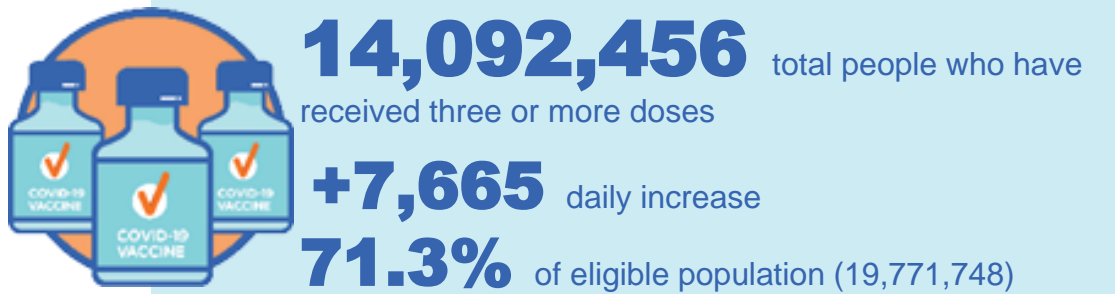
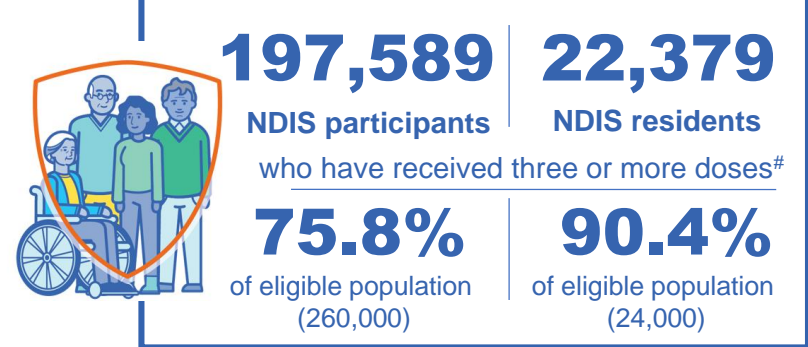
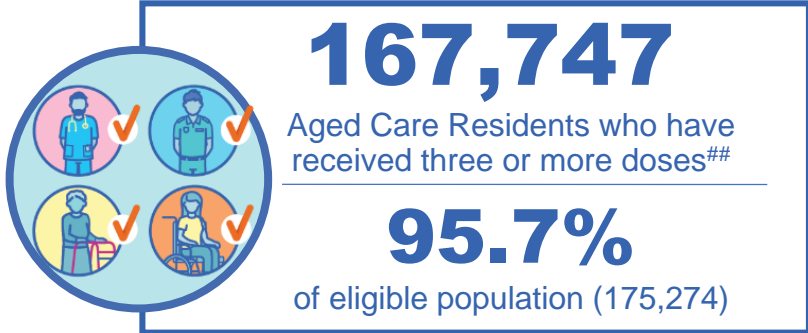
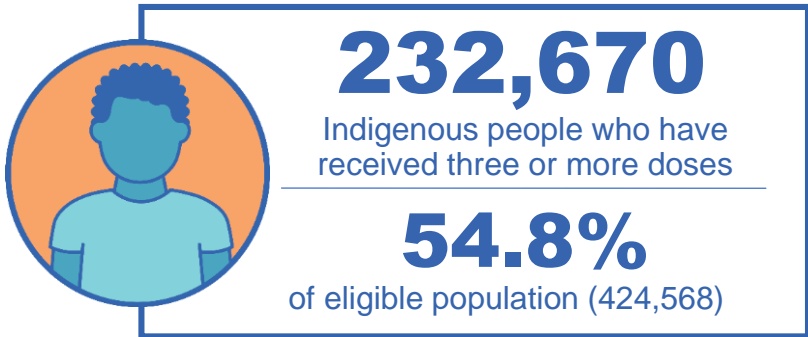


*Administration state breakdown indicates state in which a vaccine was administered

Source: Australian Immunisation Register

Data as at:
29 Jul 2022

Third Doses



	Number of People	Daily Increase	% of Eligible
NSW	4,309,918	2,551	69.0%
VIC	3,746,735	1,857	73.5%
QLD	2,451,195	1,674	64.3%
WA	1,716,571	379	83.0%
SA	1,012,189	657	75.1%
TAS	322,274	189	73.8%
ACT	277,358	113	79.7%
NT	132,383	45	78.5%

123,833


doses administered to persons residing in other territories or with missing residential information

*People may belong to multiple groups and could be represented in the above breakdowns multiple times.
NDIS participants data as at 26 July 2022. ## Aged Care Residents data as at 29 July 2022.

Source: Australian Immunisation Register

Data as at:
29 Jul 2022

Fourth Doses



104,614
Aged Care Residents who have received four or more doses#

78.8%
of eligible population (132,760)



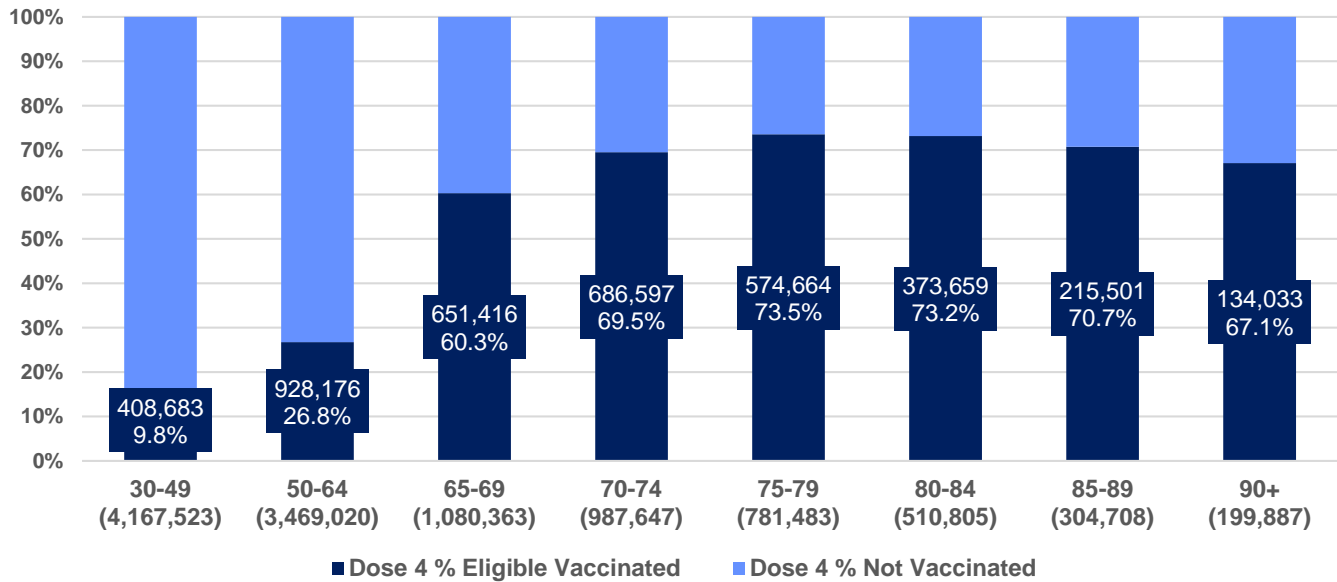
3,998,193
+62,524
34.5%
2,635,870
68.2%

total people (16+) who have received four doses
daily increase (16+)

of eligible population (30+) (11,501,436)

total people (65+) who have received four doses
of eligible population (65+) (3,864,893)

% Individuals eligible vaccinated by current age



	Number of People 16+	Daily Increase
ACT	79,454	1,458
NSW	1,286,168	19,272
NT	17,715	298
QLD	785,702	12,415
SA	319,061	4,493
TAS	107,034	1,438
VIC	981,428	16,117
WA	401,316	6,645

20,315 doses administered to persons residing in other territories or with missing residential information

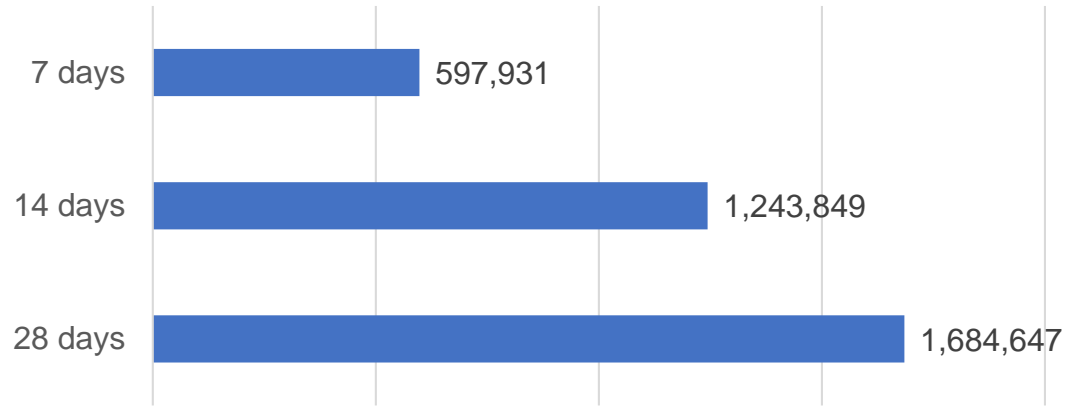
*People become eligible for a fourth dose three months after their third dose. Individuals may belong to multiple groups and could be represented in the above multiple times.
#Aged Care Residents data as at 28 July 2022.

Source: Australian Immunisation Register

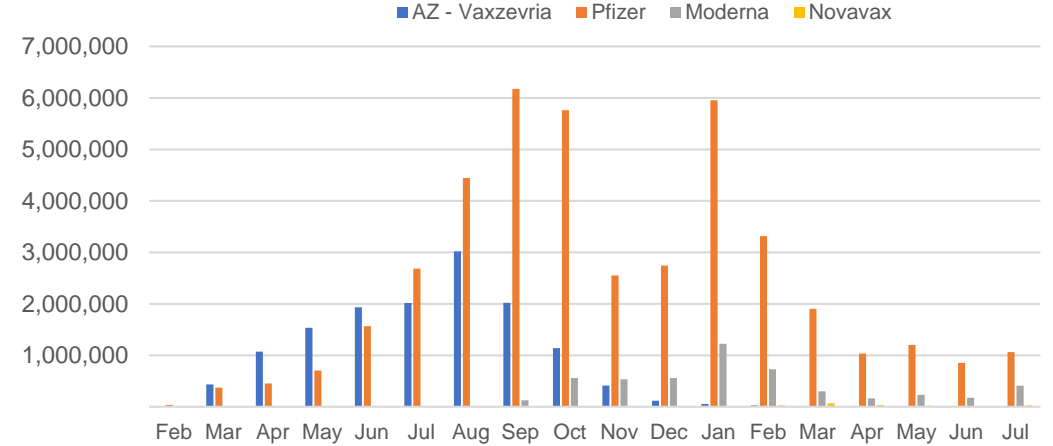
Vaccine milestone charts

Data as at:
24 Jul 2022
Updated weekly

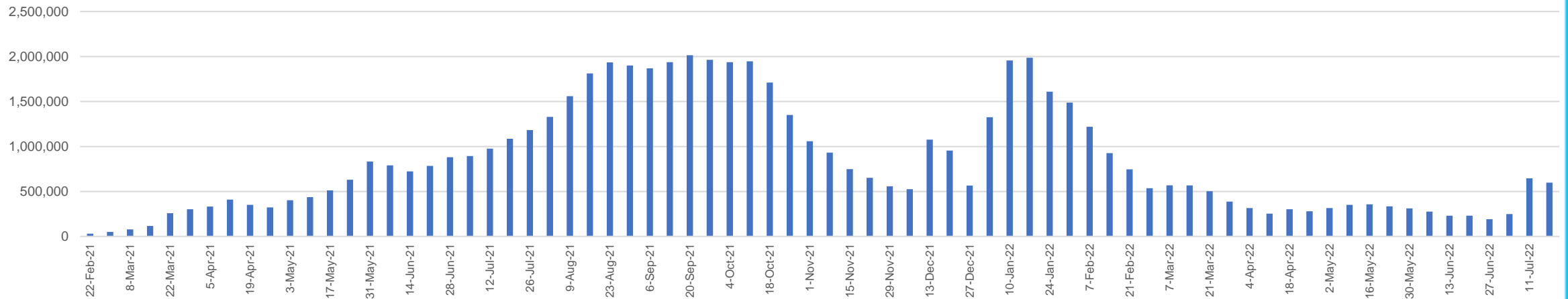
Doses Reported



Doses by administration month and vaccine type



Doses Administered by Week



*Sourced from the Australian Immunisation Register.

Data as at:
24 Jul 2022
Updated weekly

Doses by age and Jurisdiction

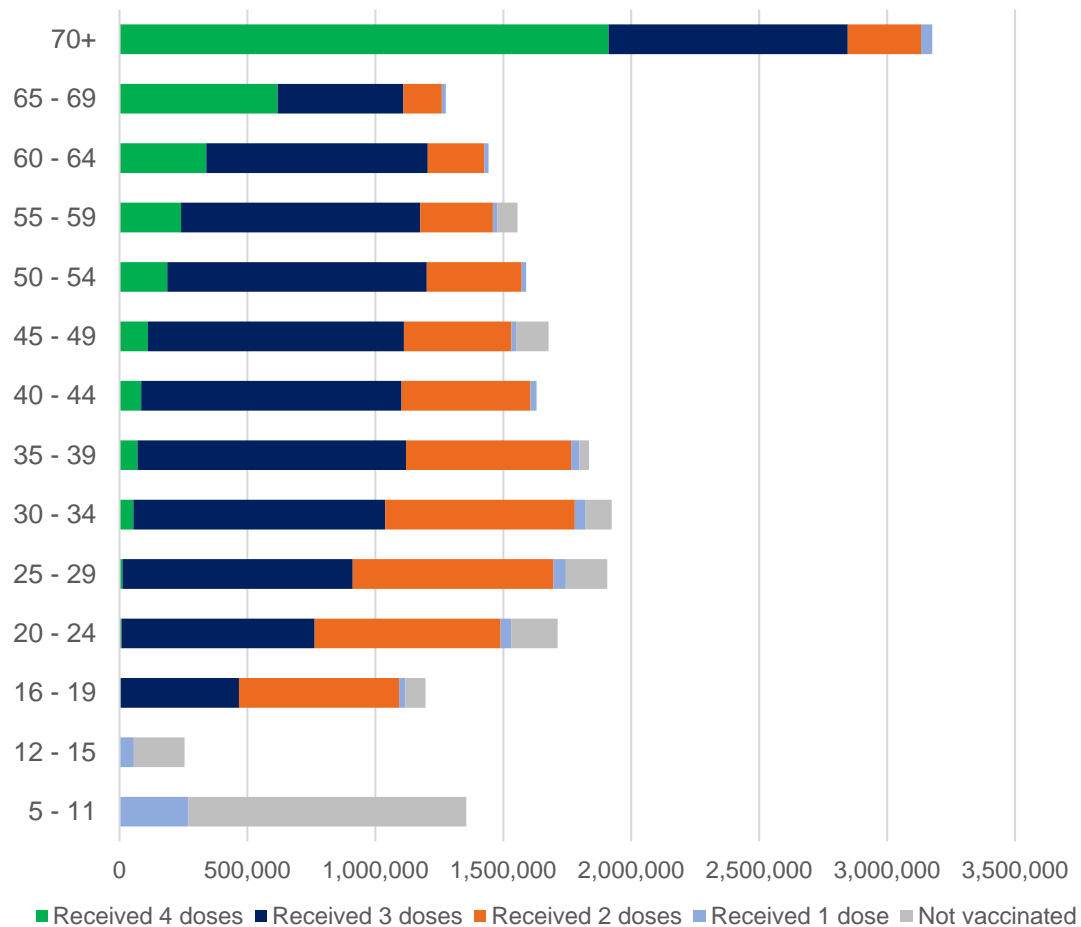
	AUS	ACT	NSW	NT	QLD	SA	TAS	VIC	WA
5 to 11 - dose 1	1,190,344	31,721	356,682	13,085	205,945	83,414	28,360	324,030	139,621
5 to 11 - dose 2	921,165	27,699	283,649	8,852	152,959	65,177	23,368	250,618	104,206
5 to 11 - population	2,276,638	39,789	716,460	24,750	478,731	148,816	45,033	578,499	244,154
5 to 11 % with dose 1	52.29%	79.72%	49.78%	52.87%	43.02%	56.05%	62.98%	56.01%	57.19%
5 to 11 % with dose 2	40.46%	69.61%	39.59%	35.77%	31.95%	43.80%	51.89%	43.32%	42.68%
12 to 15 - dose 1	1,045,659	20,131	321,809	10,691	204,769	67,999	22,730	273,215	115,242
12 to 15 - dose 2	989,324	19,577	307,484	9,619	191,065	64,256	21,607	261,218	106,650
12 to 15 - population	1,243,990	19,693	390,330	13,060	270,146	82,747	26,308	308,611	132,869
12 to 15 % with dose 1	84.06%	>99%	82.45%	81.86%	75.80%	82.18%	86.40%	88.53%	86.73%
12 to 15 % with dose 2	79.53%	>99%	78.78%	73.65%	70.73%	77.65%	82.13%	84.64%	80.27%
16 and over - dose 1	20,150,081	354,038	6,355,012	173,949	3,883,194	1,382,055	446,710	5,184,676	2,104,917
16 and over - dose 2	19,808,815	348,211	6,254,722	169,252	3,818,938	1,352,594	437,691	5,104,750	2,073,509
16 and over - dose 3	14,050,212	276,629	4,295,655	132,160	2,441,751	1,008,773	321,328	3,737,628	1,714,031
16 and over - population	20,619,959*	344,037	6,565,651	190,571	4,112,707	1,440,400	440,172	5,407,574	2,114,978
16 and over % with dose 1	97.72%	>99%	96.79%	91.28%	94.42%	95.95%	>99%	95.88%	>99%
16 and over % with dose 2	96.07%	>99%	95.26%	88.81%	92.86%	93.90%	>99%	94.40%	98.04%
16 and over % with dose 3	68.14%	80.41%	65.43%	69.35%	59.37%	70.03%	73.00%	69.12%	81.04%
30 and over - dose 1	15,758,151	273,681	4,997,462	128,340	3,034,685	1,100,098	354,796	4,049,257	1,648,327
30 and over - dose 2	15,530,470	269,793	4,928,700	125,733	2,993,036	1,081,436	349,019	3,994,654	1,627,506
30 and over - dose 3	11,909,320	226,898	3,679,209	103,706	2,130,138	864,947	277,890	3,126,784	1,410,502
30 and over - dose 4	3,617,751	70,242	1,162,137	15,436	711,204	291,802	97,789	886,944	364,493
30 and over - population	15,805,337	258,148	5,042,108	140,343	3,148,826	1,126,262	349,703	4,096,873	1,639,833
30 and over % with dose 1	>99%	>99%	>99%	91.45%	96.38%	97.68%	>99%	98.84%	>99%
30 and over % with dose 2	98.26%	>99%	97.75%	89.59%	95.05%	96.02%	>99%	97.50%	>99%
30 and over % with dose 3	75.35%	87.89%	72.97%	73.89%	67.65%	76.80%	79.46%	76.32%	86.01%
30 and over % with dose 4	22.89%	27.21%	23.05%	11.00%	22.59%	25.91%	27.96%	21.65%	22.23%
65 and over - dose 1	4,451,352	65,155	1,443,186	20,645	864,189	356,351	117,050	1,111,379	435,133
65 and over - dose 2	4,392,482	64,183	1,424,274	20,311	854,290	351,865	115,733	1,095,992	430,370
65 and over - dose 3	3,956,104	59,749	1,270,475	18,017	769,647	322,937	106,829	980,190	401,070
65 and over - dose 4	2,529,731	43,534	807,492	9,045	507,451	212,349	70,975	610,563	255,103
65 and over - population	4,192,882	57,745	1,366,640	20,994	831,881	338,903	110,799	1,057,498	407,530
65 and over % with dose 1	>99%	>99%	>99%	98.34%	>99%	>99%	>99%	>99%	>99%
65 and over % with dose 2	>99%	>99%	>99%	96.75%	>99%	>99%	>99%	>99%	>99%
65 and over % with dose 3	94.35%	>99%	92.96%	85.82%	92.52%	95.29%	96.42%	92.69%	98.41%
65 and over % with dose 4	60.33%	75.39%	59.09%	43.08%	61.00%	62.66%	64.06%	57.74%	62.60%

- *National population will not equal sum of listed jurisdictions due to a small number of people counted in national population residing in some 'other' territories. Sum of state doses will not add to national total as some records are unable to be geocoded to a State or Territory.

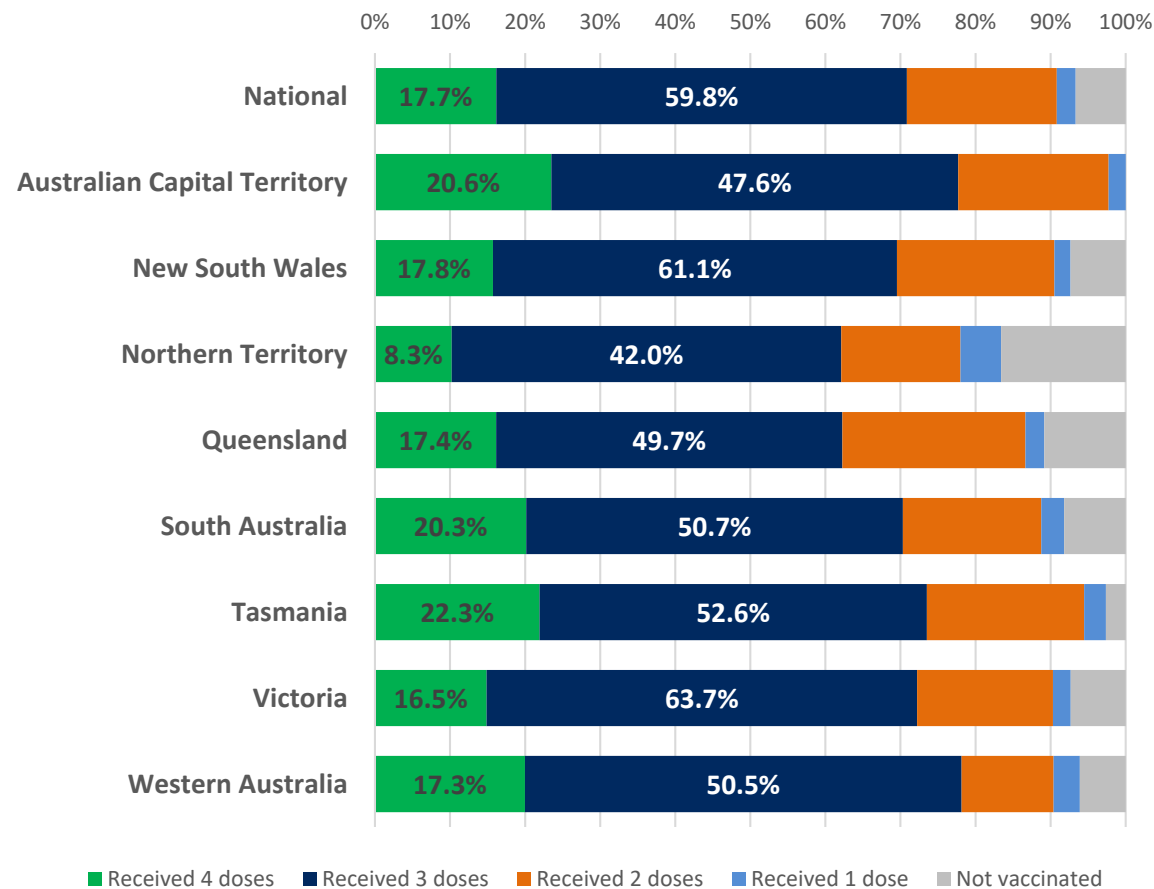
Data as at:
24 Jul 2022
Updated weekly

Vaccinations by age and location

Number of people vaccinated by age

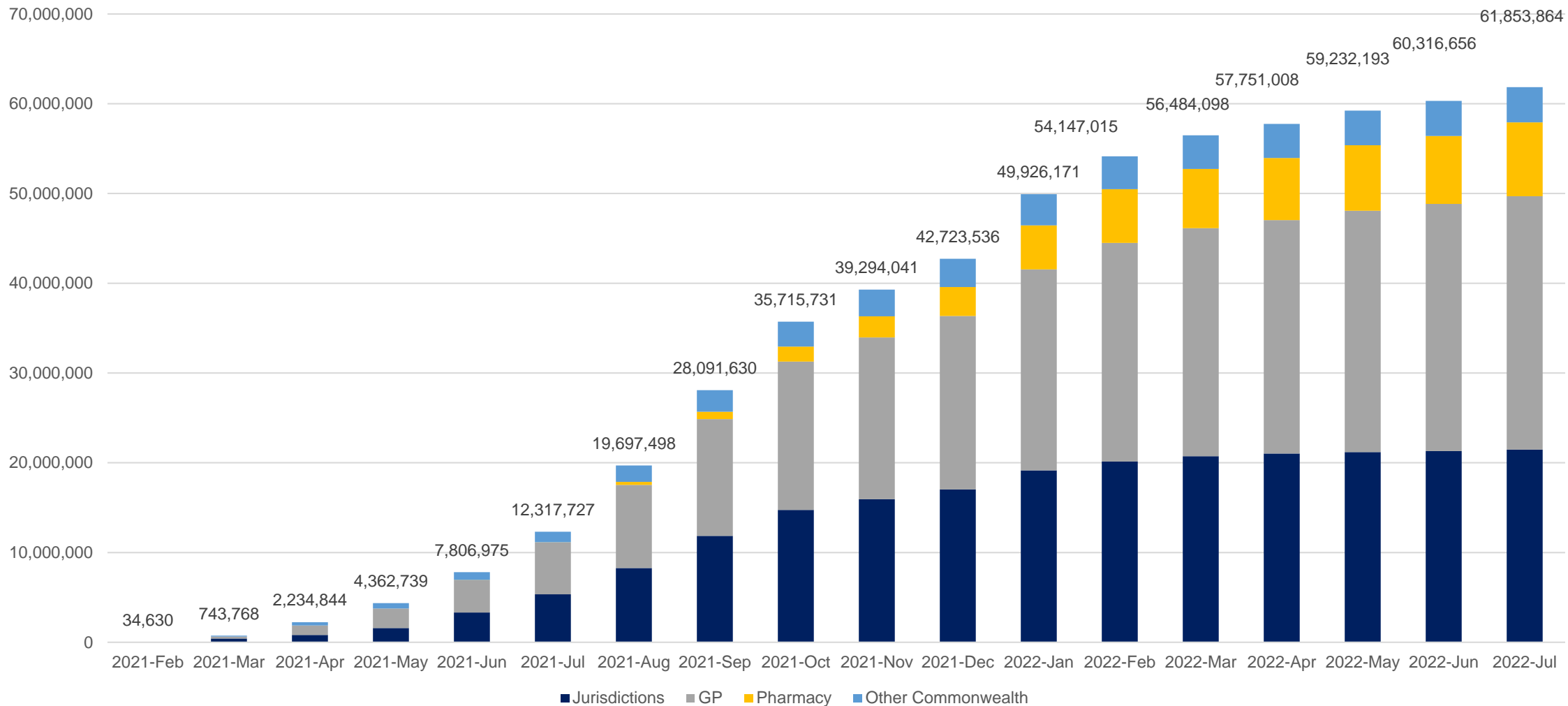


Individuals vaccinated by residential location



Data as at:
24 Jul 2022
Updated weekly

Cumulative doses administered by channel



Source: Australian Immunisation Register

Commonwealth primary care

Data as at:
24 Jul 2022
Updated weekly

Australia's COVID-19
Vaccine Program



Primary care vaccine administration sites

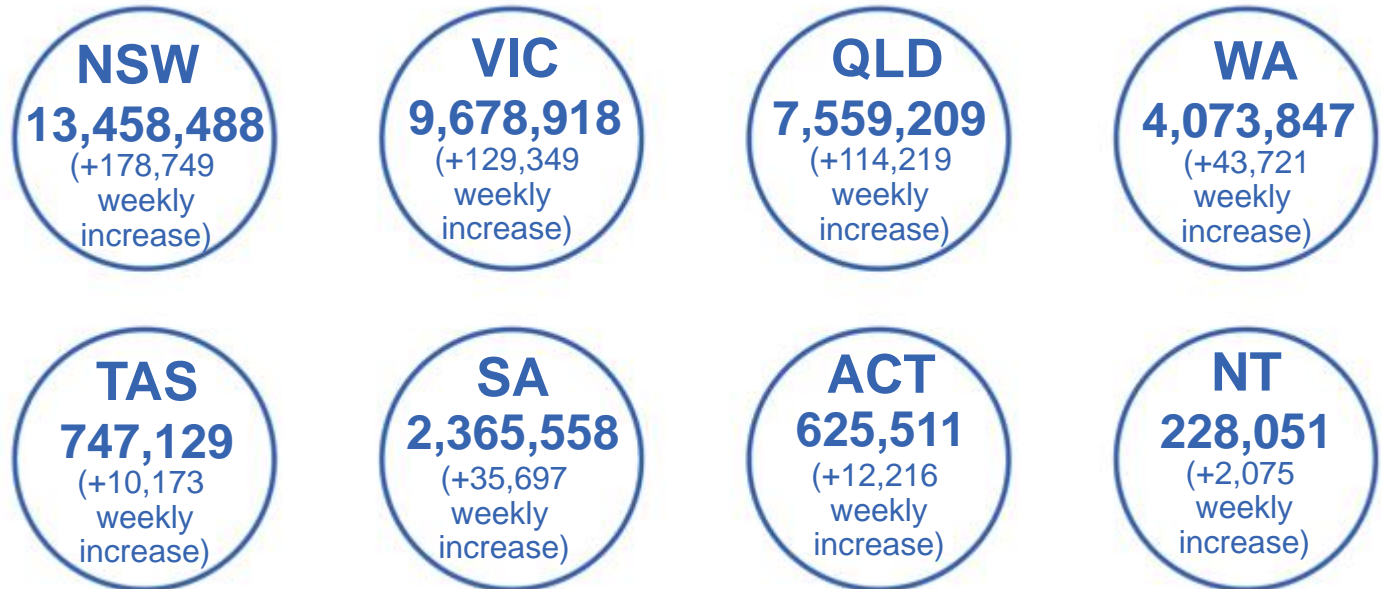
5,691	123	178	3,617
GPs	CVCs	ACCHS	Pharmacies



39,061,565 total vaccine doses administered
primary care settings as at 24 July
+ 530,519 recorded in the last week

Primary care vaccinations by provider type

	Doses administered	7 day increase
General Practice* includes other Commonwealth	30,836,653	278,628
Pharmacy	8,224,912	251,891



324,854

doses administered to persons residing in other territories or with missing residential information

*General practice includes Commonwealth Vaccination Clinics, Aboriginal Community Health Centres, Royal Flying Doctor Service and other Commonwealth vaccination facilities

Source: Australian Immunisation Register

Aboriginal and Torres Strait Islander peoples

Number of people vaccinated

Data as at:
24 Jul 2022
Updated weekly



445,306

people over the age of 16
have had at least one dose

85.0%

of people over the age of 16
have had at least one dose



427,143

people over the age of 16
have had two doses

81.6%

of people over the age of 16
have had two doses



People aged 12 – 15 years

47,643

41,727

67.5%

59.1%

At least one dose

Have had two doses

178 Aboriginal community controlled health services (ACCHS) sites

0#	50	27	44	12	3	21	21
ACT	NSW	NT	QLD	SA	TAS	VIC	WA

Medicare Address State ^{##}	Individuals Dose 1 % (16+)	Individuals Dose 2 % (16+)	Individuals Dose 3 % Eligible (aged 16+)	Individuals Dose 4 % Eligible (aged 30+)
Australian Capital Territory	91.8%	89.6%	63.6%	28.5%
New South Wales	87.4%	85.4%	51.1%	28.2%
Northern Territory	89.8%	85.6%	67.7%	17.0%
Queensland	81.9%	78.2%	47.5%	27.2%
South Australia	80.7%	75.2%	59.3%	28.3%
Tasmania	88.9%	86.3%	59.1%	30.6%
Victoria	90.5%	88.5%	60.9%	26.3%
Western Australia	86.8%	81.1%	64.0%	18.6%
Unknown/Other Territories	70.7%	65.4%	47.3%	14.2%
Totals	85.0%	81.6%	54.6%	25.0%

Source: Australian Immunisation Register

*Identifying as Aboriginal and Torres Strait Islander is optional and the estimated population may be under reported.

**Includes all Aboriginal and Torres Strait Islander peoples who have received a vaccination, not limited to those administered in an ACCHS setting

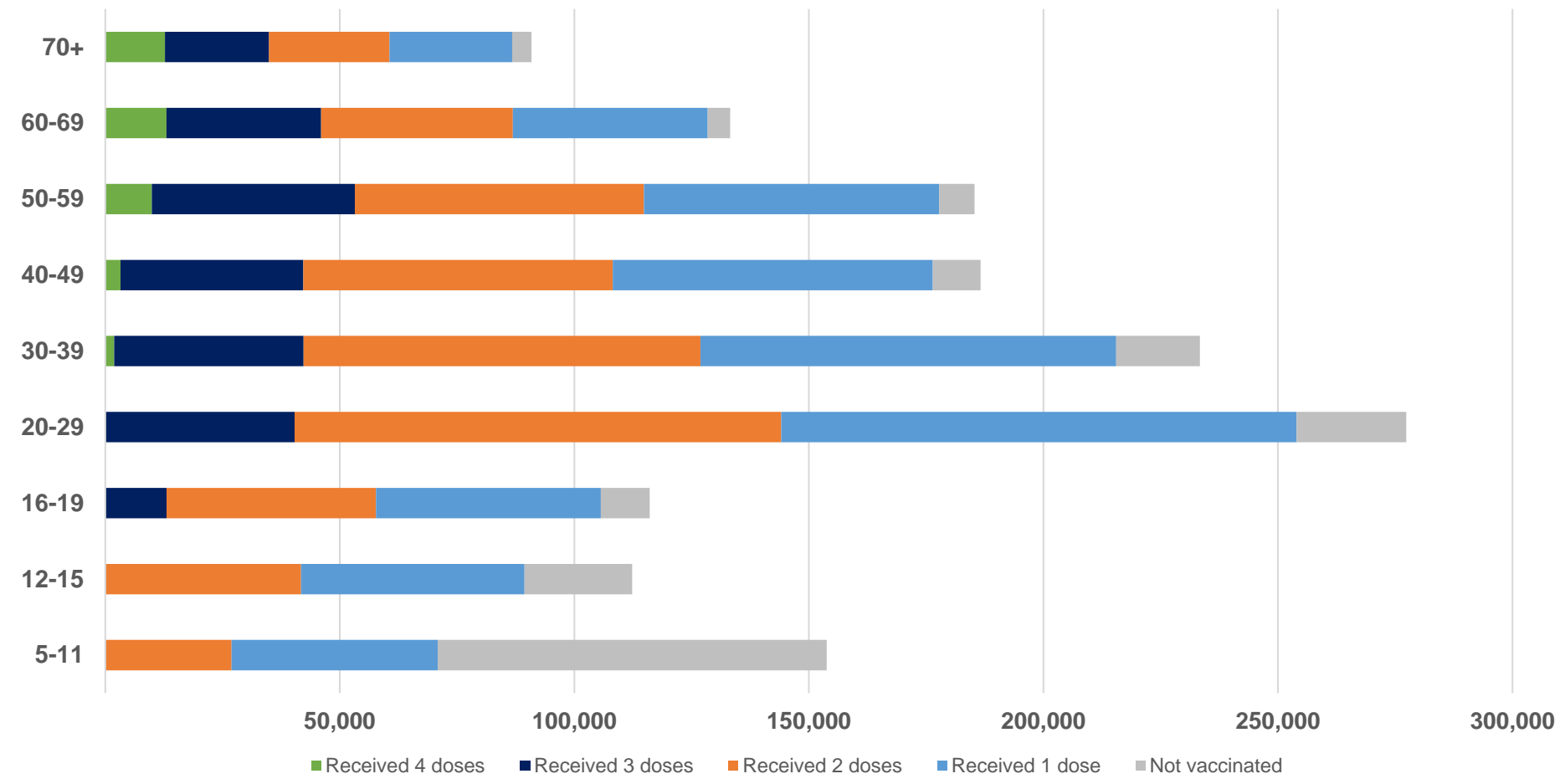
#ACCHS in the ACT are currently operating as a Commonwealth Vaccine Clinics so not included to avoid double counting

##The above table includes all identified Aboriginal and Torres Strait Islander people who are aged 16 and above by their state of residence.

Aboriginal and Torres Strait Islander peoples

Number of people vaccinated by age

Data as at:
24 Jul 2022
Updated weekly



Source: Australian Immunisation Register

Individuals with Culturally and Linguistically Diverse (CALD) backgrounds data

Data as at:
10 Jul 2022
Updated weekly

Australia's COVID-19
Vaccine Program

People over the age of 16

CALD population *	Total number of individuals in cohort	% People with at least one dose	% People who received two doses	% of eligible people who received three or more doses
General population	20,619,959	>95.0%	>95.0%	70.7%
People born overseas	4,451,667	94.4%	93.8%	71.6%
Speaks a language other than English at home	4,106,196	94.0%	93.3%	67.5%

	General population			Born Overseas			Speaks a language other than English at home		
	% with at least one dose	% who received two doses	% of eligible people who received three or more doses	% with at least one dose	% who received two doses	% of eligible people who received three or more doses	% with at least one dose	% who received two doses	% of eligible people who received three or more doses
ACT	>95.0%	>95.0%	79.2%	>95.0%	>95.0%	77.4%	>95.0%	94.9%	74.7%
NSW	>95.0%	>95.0%	68.3%	94.7%	94.2%	68.7%	94.0%	93.3%	64.1%
NT	91.3%	88.8%	78.2%	>95.0%	94.6%	87.4%	94.0%	93.5%	86.2%
Qld	94.3%	92.7%	63.6%	92.0%	91.3%	65.8%	92.3%	91.5%	62.3%
SA	>95.0%	93.8%	74.3%	92.5%	91.5%	73.4%	91.5%	90.4%	69.7%
Tas	>95.0%	>95.0%	73.2%	93.3%	92.7%	74.7%	93.3%	92.6%	70.7%
Vic	>95.0%	94.3%	73.0%	>95.0%	94.6%	71.9%	94.6%	94.0%	68.2%
WA	>95.0%	>95.0%	82.8%	>95.0%	94.4%	84.8%	>95.0%	94.5%	82.9%

*Individuals with Culturally and Linguistically Diverse (CALD) backgrounds are as reported in the 2021 Census, excluding those who have since departed Australia; those born in the UK, Ireland or NZ; and Aboriginal and/or Torres Strait Islander peoples. There is overlap across CALD cohorts where individuals may have reported they had more than one CALD characteristic in the 2021 Census.

Small negative changes may appear when compared with the previous report due to perturbation, in particular for small population groups.

Source: Australian Immunisation Register linked to the Multi-Agency Data Integration Project (Census 2021 characteristics)

Data as at:
28 Jul 2022
Updated weekly

Residential aged care vaccination rollout

Residential aged care facilities status

176,583	175,274	167,747	104,614
People with at least one dose	People with two doses	People with three doses	People with four doses

Aged care resident vaccinations*



Aged care worker vaccinations

Jurisdictions	Total workers with at least one dose	Workers with two doses	% Workers with at least one dose	% Workers with two doses
NSW	77,892	77,765	99.9%	99.7%
VIC	70,776	70,776	100.0%	100.0%
QLD	48,877	48,863	100.0%	100.0%
SA	26,702	26,693	100.0%	100.0%
WA	24,648	24,641	100.0%	100.0%
TAS	7,540	7,540	100.0%	100.0%
NT	917	917	100.0%	100.0%
ACT	2,932	2,932	100.0%	100.0%
Total	260,284	260,127	100.0%	99.9%

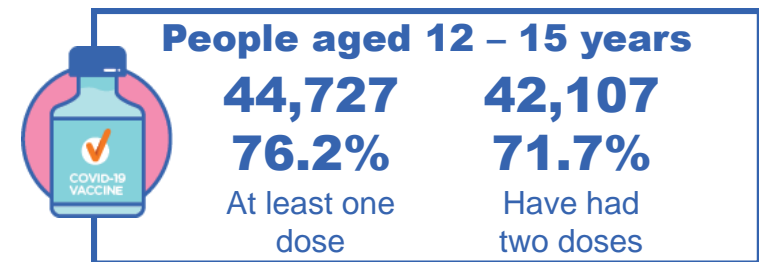
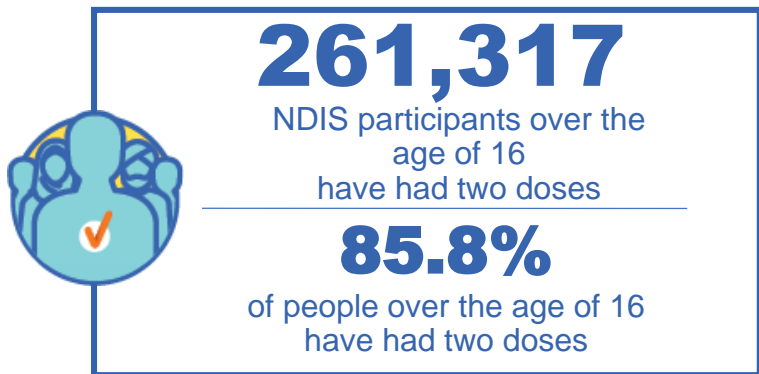
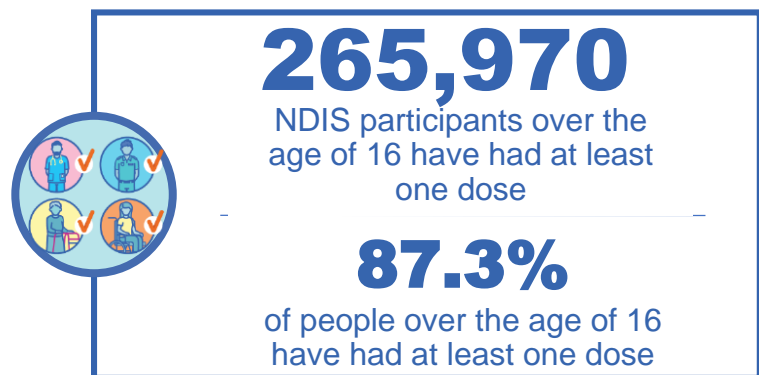
Source: Residential aged care provider self-reported COVID-19 vaccination information and matched AIR data of residents in permanent residential RACFs.

*Self-reported status updates are provided by facilities at least once per week. Reporting is updated Monday to Friday to encompass different facility updates being made on different days.

National Disability Insurance Scheme (NDIS) reported vaccinations

Data as at:
28 Jul 2022
Updated weekly

Australia's COVID-19
Vaccine Program



NDIS participant vaccinations

	% People aged 16+ with at least one dose	% People aged 16+ with two doses	% People aged 16+ with three doses	% People aged 16+ with four doses
ACT	89.4%	88.2%	83.2%	28.5%
NSW	87.8%	86.4%	74.7%	28.8%
NT	77.9%	75.6%	78.5%	21.6%
QLD	85.5%	83.9%	71.0%	23.9%
SA	85.2%	83.3%	77.6%	22.6%
TAS	87.5%	85.6%	75.7%	23.6%
VIC	88.5%	87.1%	77.4%	25.8%
WA	88.7%	87.0%	81.9%	25.7%
National	87.3%	85.8%	75.8%	26.0%

Source: Linkage between National Disability Insurance Agency data and the Australian Immunisation Register. Total NDIS participant numbers as at 30 June. Australian Immunisation Register data as at 27 July. Includes all participants regardless of residence type.

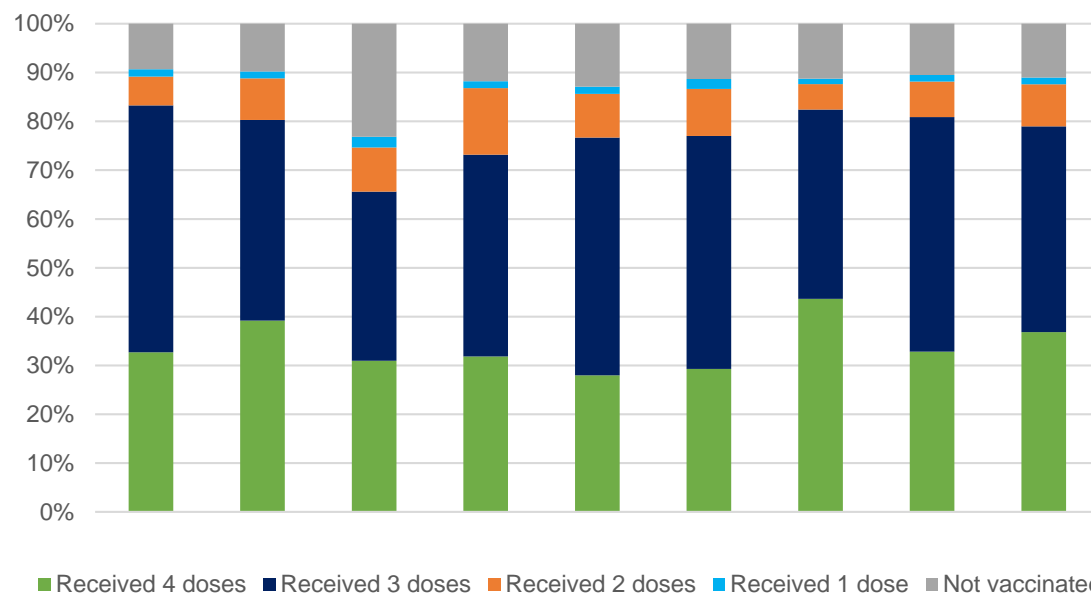
National Disability Insurance Scheme (NDIS) reported vaccinations

Data as at:
28 Jul 2022
Updated weekly

Australia's COVID-19
Vaccine Program

NATIONAL	Total people with at least one dose	People with two doses	Total number of individuals in cohort	% People with at least one dose	% People with two doses
NDIS participants living in disability accommodation	21,219	20,889	23,858	88.9%	87.6%

NDIS participants in disability and aged care accommodation



Source: Linkage between National Disability Insurance Agency data and the Australian Immunisation Register. Includes participants residing in disability accommodation only.
Source: Total NDIS participant numbers as at 30 June. Participant data as at 26 July. Australian Immunisation Register data as at 27 July. Worker data as at 28 July.

NDIS workforce vaccinations

	NDIS workers with at least one dose	NDIS workers with two doses	% NDIS workers with at least one dose	% NDIS workers with two doses
NSW	128,610	123,850	98.4%	94.7%
VIC	117,681	114,601	97.8%	95.3%
QLD	71,446	70,610	97.9%	96.8%
WA	34,473	33,090	99.0%	95.0%
SA	35,821	34,193	98.6%	94.1%
TAS	12,425	12,044	98.5%	95.5%
ACT	12,324	12,299	99.7%	99.5%
NT	3,972	3,824	99.6%	95.9%
TOTAL	416,752	404,511	98.3%	95.4%

Source: the NDIS Commission has established a requirement for registered NDIS providers who provide intensive disability support services to report on the vaccination status of workers they employ, or otherwise engage, to deliver NDIS-funded supports and services, and who are required to be vaccinated in accordance with in-force state and territory public health orders. The statistics reflect data reported to the NDIS Commission by registered NDIS providers and should be considered indicative and subject to change

Note: Some registered NDIS providers are yet to report on the vaccination status of their workforce. The NDIS Commission is working with those providers around reporting requirements.

Remaining workers not included include those exempt from vaccination requirements, workers whose vaccination status is not yet verified by the provider (such as workers on leave) and provider reporting anomalies.