



Australian Government
Operation COVID Shield

COVID-19 Vaccine Roll-out

03 July 2022

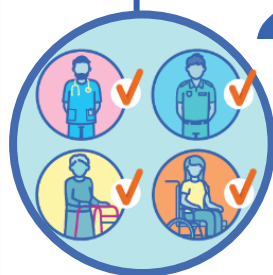
Data as at:
02 Jul 2022

Total vaccine doses



60,357,272 total vaccine
doses administered nationally as at 02 July

+9,363 recorded in the last 24 hours



20,115,220

people have had at least one
dose

>95%

of people over the age of 16
have had at least one dose



19,778,568

people are fully vaccinated

>95%

of people over the age of 16 are
fully vaccinated



13,898,700

people over the age of 16
who have received three or
more doses

NSW
18,727,773
(+2,882 daily
increase)

VIC
15,827,127
(+2,349 daily
increase)

QLD
11,413,486
(+1,393 daily
increase)

WA
6,635,657
(+1,051 daily
increase)

TAS
1,370,557
(+305 daily
increase)

SA
4,203,996
(+989 daily
increase)

ACT
1,582,676
(+385 daily
increase)

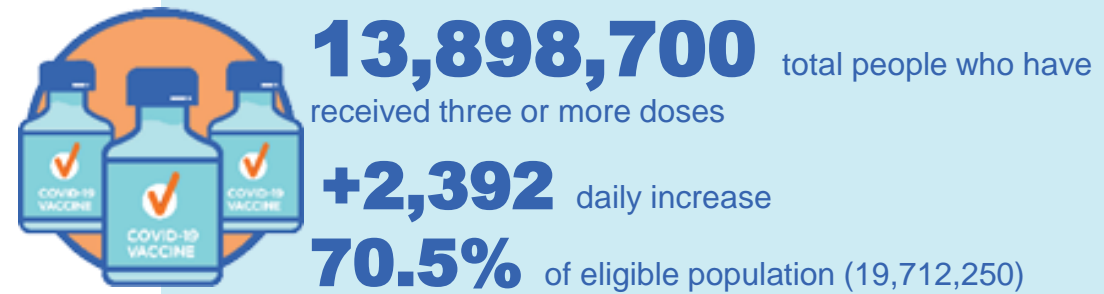
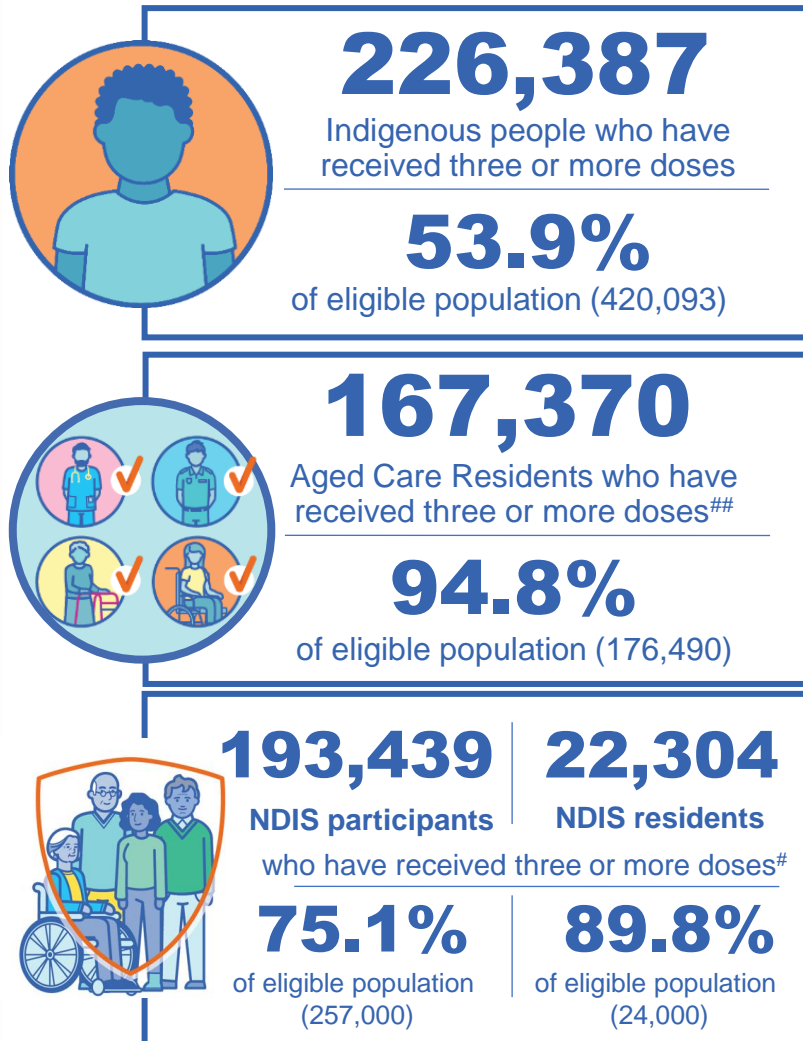
NT
596,000
(**<10** daily
increase)

*Administration state breakdown indicates state in which a vaccine was administered

**Overall dose count includes instances of more than three doses per person in a small number of cases.

Source: Australian Immunisation Register

Booster Vaccinations



Data as at:
02 Jul 2022

	Number of People	Daily Increase	% of Eligible
NSW	4,242,008	788	68.1%
VIC	3,705,084	585	72.9%
QLD	2,408,631	407	63.5%
WA	1,703,815	226	82.8%
SA	995,676	308	74.1%
TAS	318,046	63	73.0%
ACT	274,368	56	79.0%
NT	131,539	<10	78.1%

*People may belong to multiple groups and could be represented in the above breakdowns multiple times.
NDIS participants data as at 29 June 2022. ## Aged Care Residents data as at 01 July 2022.

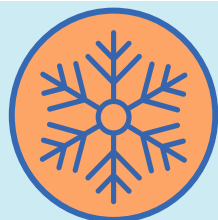
Source: Australian Immunisation Register

119,533 doses administered to persons residing in other territories or with missing residential information

Winter / Fourth Doses

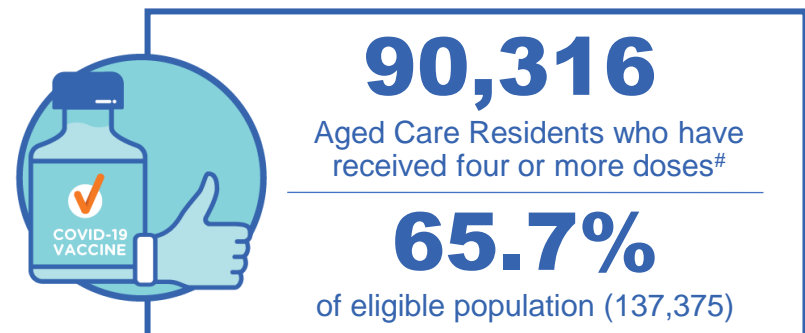
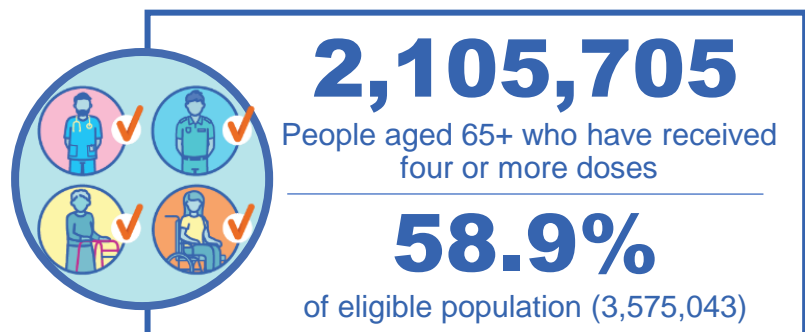
Data as at:
02 Jul 2022

Australia's COVID-19
Vaccine Roadmap



2,389,473 total people (16+) who have received four or more doses

+5,140 daily increase



	Number of People 16+	Daily Increase
ACT	45,906	157
NSW	773,532	1,658
NT	10,340	<10
QLD	454,705	840
SA	195,031	438
TAS	67,185	181
VIC	592,885	1,186
WA	238,195	655

11,694 doses administered to persons
residing in other territories or with
missing residential information

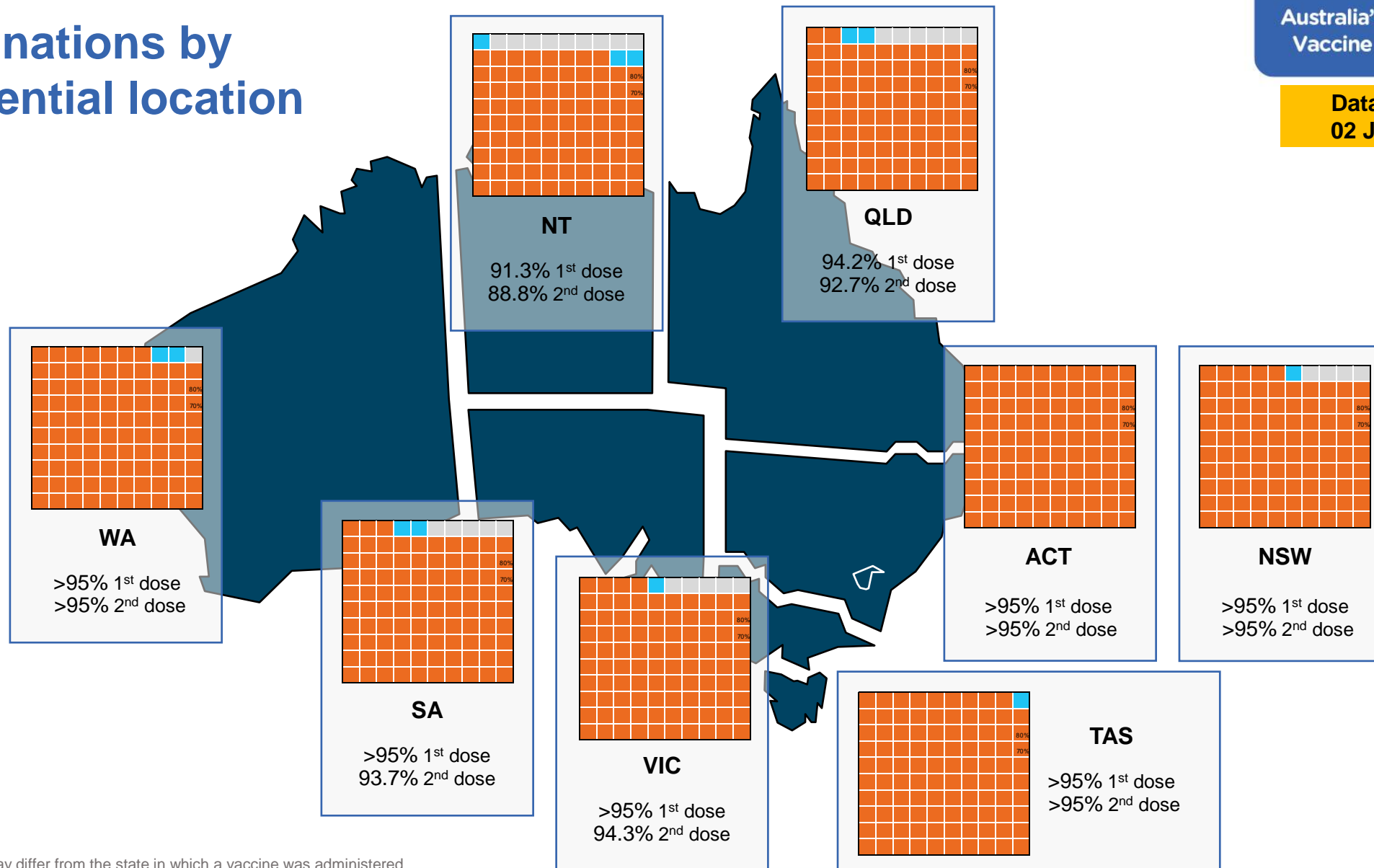
*People become eligible for a winter booster four months after their third dose. Individuals may belong to multiple groups and could be represented in the above multiple times.
[#]Aged Care Residents data as at 30 June 2022.

Source: Australian Immunisation Register

Vaccinations by residential location

Australia's COVID-19
Vaccine Roadmap

Data as at:
02 Jul 2022



*Residential state may differ from the state in which a vaccine was administered

Commonwealth and Jurisdiction vaccine doses administered

Data as at:
02 Jul 2022



60,357,272 total vaccine
doses administered nationally as at 02 July

+ 9,363 recorded in the last 24 hours

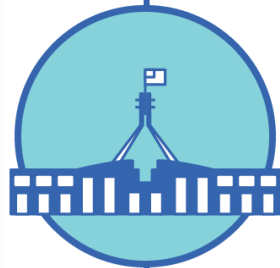


21,309,324

doses administered by state
and territory facilities

+ 1,184

recorded in the last 24 hours



39,047,948

doses administered by
commonwealth facilities

+ 8,179

recorded in the last 24 hours

37,729,898 total vaccine doses
administered in primary care settings

1,318,050 total vaccine doses
administered in aged care and disability
settings

NSW	Jurisdictions	Commonwealth
Cumulative	5,143,584	13,584,189
Daily increase	<10	2,875

VIC	Jurisdictions	Commonwealth
Cumulative	6,134,328	9,692,799
Daily increase	213	2,136

QLD	Jurisdictions	Commonwealth
Cumulative	3,862,779	7,550,707
Daily increase	45	1,348

WA	Jurisdictions	Commonwealth
Cumulative	2,533,928	4,101,729
Daily increase	273	778

TAS	Jurisdictions	Commonwealth
Cumulative	629,451	741,106
Daily increase	193	112

SA	Jurisdictions	Commonwealth
Cumulative	1,848,293	2,355,703
Daily increase	324	665

ACT	Jurisdictions	Commonwealth
Cumulative	809,501	773,175
Daily increase	129	256

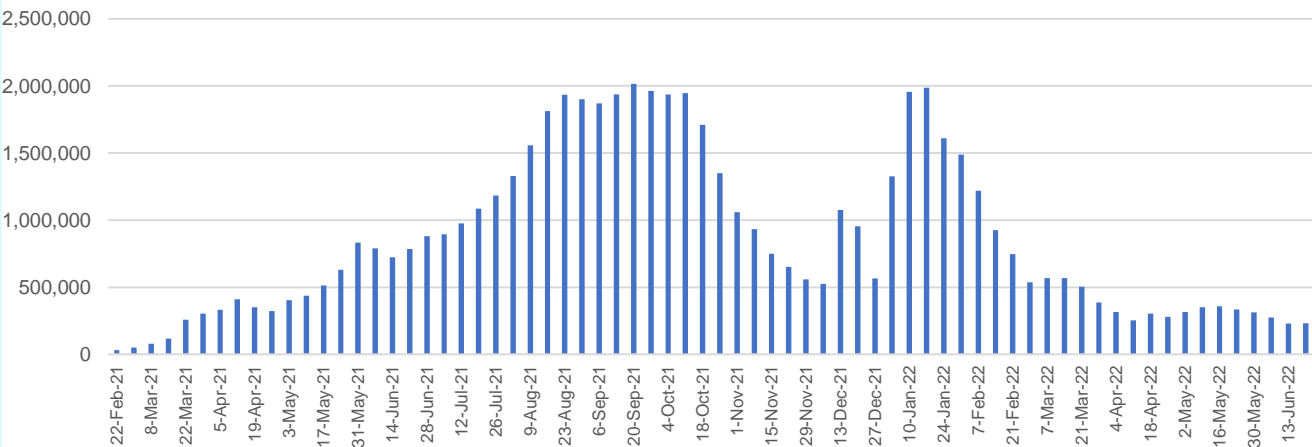
NT	Jurisdictions	Commonwealth
Cumulative	347,460	248,540
Daily increase	<10	<10

Vaccine milestone charts

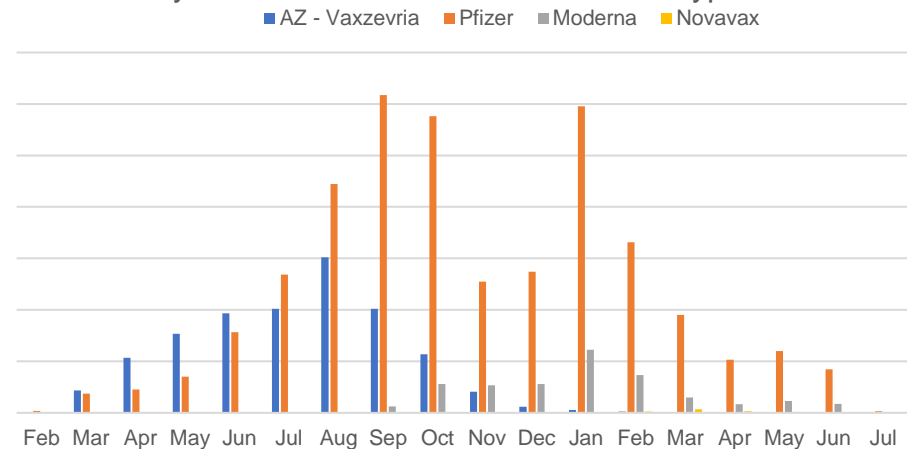
Data as at:
02 Jul 2022

Australia's COVID-19
Vaccine Roadmap

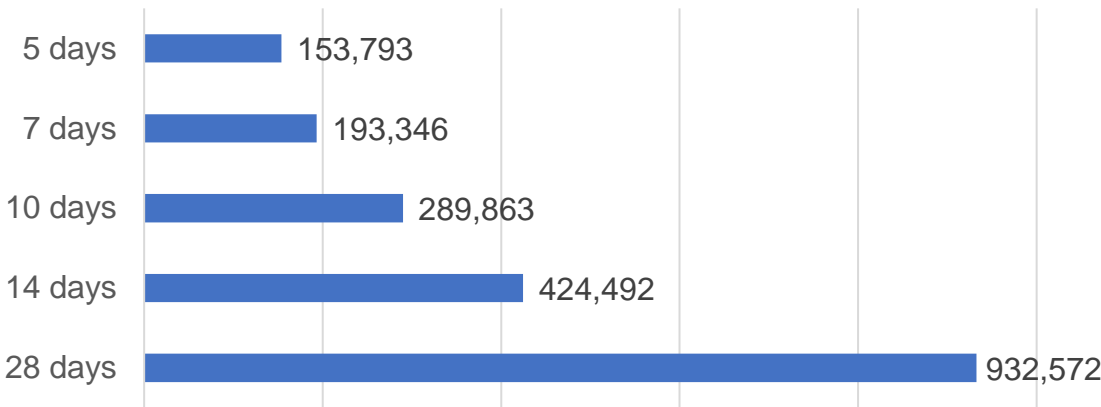
Doses Administered by Week



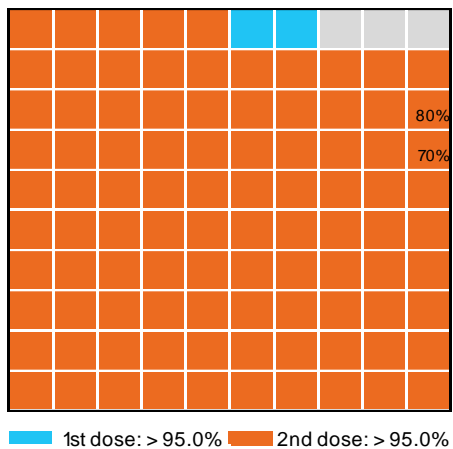
Doses by administration month and vaccine type



Doses Reported



Eligible population percentage coverage



*Each square represents 1% of the national population.
Squares are filled as milestones are achieved.

*Sourced from the Australian Immunisation Register.

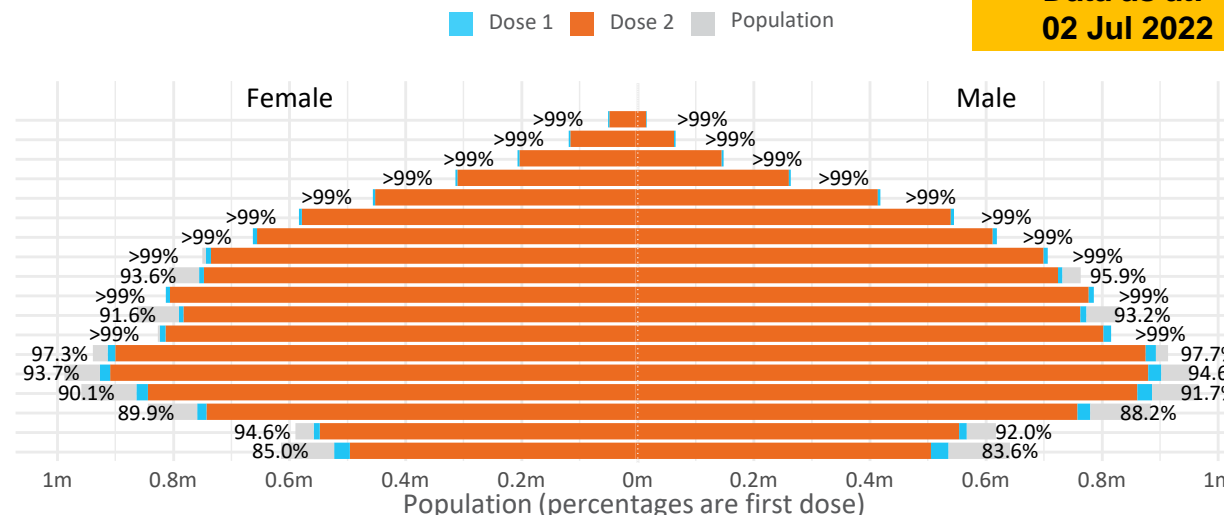
Doses by age and sex

First and second doses by age and sex

	16+	50+	12-15	5-11
Dose 1	97.55% (20,115,220 doses / 20,619,959 people)	>99% (8,932,266 doses / 8,749,703 people)	84.32% (1,048,876 doses / 1,243,990 people)	52.29% (1,190,443 doses / 2,276,638 people)
Dose 2	95.92% (19,778,568 doses / 20,619,959 people)	>99% (8,824,539 doses / 8,749,703 people)	79.79% (992,533 doses / 1,243,990 people)	39.68% (903,462 doses / 2,276,638 people)

Data as at:
02 Jul 2022

Age	Dose 1	Dose 2
95+	65,990 (>99%)	62,531 (>99%)
90-94	182,643 (>99%)	177,154 (>99%)
85-89	351,927 (>99%)	345,178 (>99%)
80-84	572,982 (>99%)	565,857 (>99%)
75-79	866,855 (>99%)	858,398 (>99%)
70-74	1,119,647 (>99%)	1,108,254 (>99%)
65-69	1,271,913 (>99%)	1,257,033 (>99%)
60-64	1,438,876 (>99%)	1,422,349 (>99%)
55-59	1,475,673 (94.9%)	1,458,977 (93.8%)
50-54	1,585,760 (>99%)	1,568,808 (>99%)
45-49	1,550,470 (92.5%)	1,532,085 (91.4%)
40-44	1,626,871 (>99%)	1,602,881 (98.9%)
35-39	1,794,501 (97.8%)	1,762,260 (96.0%)
30-34	1,820,085 (94.6%)	1,778,025 (92.4%)
25-29	1,743,876 (91.5%)	1,695,979 (89.0%)
20-24	1,531,377 (89.4%)	1,491,046 (87.1%)
16-19	1,115,774 (93.3%)	1,091,753 (91.3%)
12-15	1,048,876 (84.3%)	992,533 (79.8%)

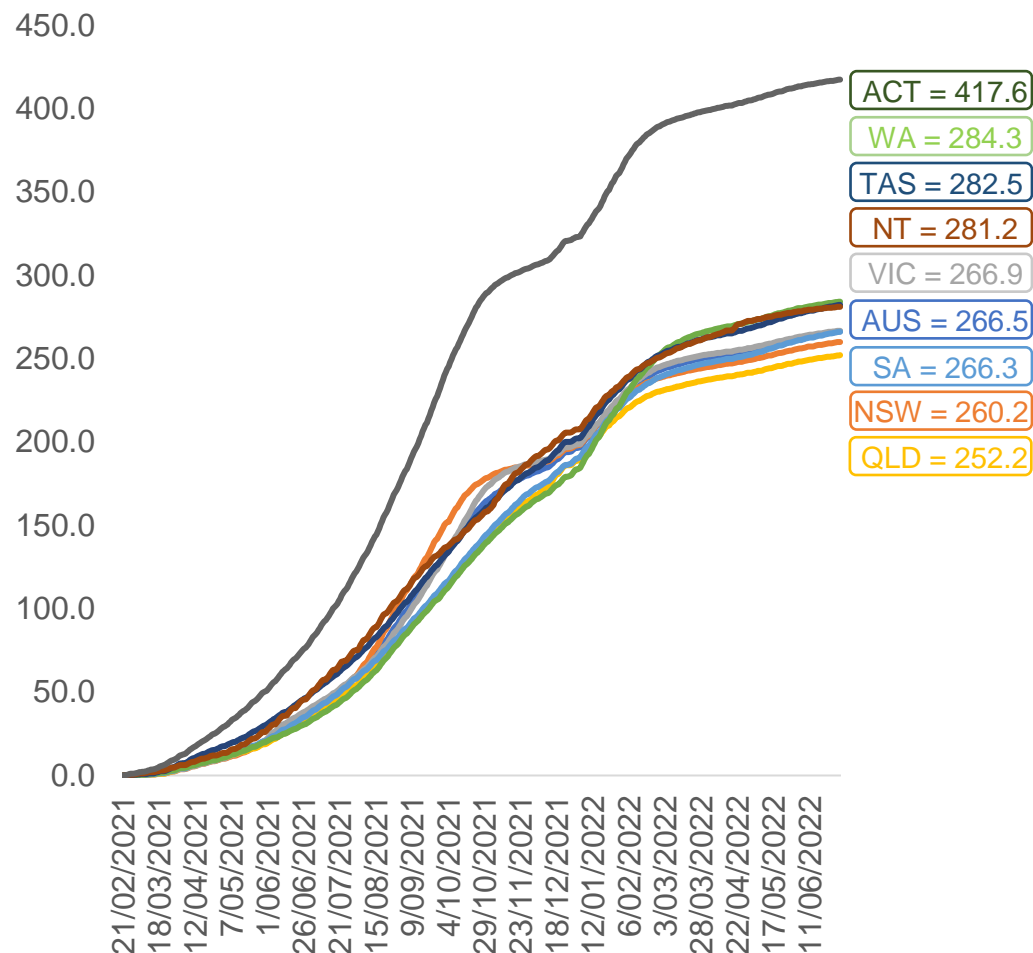


	AUS	ACT	NSW	NT	QLD	SA	TAS	VIC	WA
16 and over - dose 1	20,115,220	353,597	6,343,636	173,915	3,875,278	1,379,519	446,172	5,176,195	2,100,978
16 and over - dose 2	19,778,568	347,846	6,245,420	169,238	3,811,509	1,350,222	437,162	5,097,586	2,069,955
16 and over - population	20,619,959*	344,037	6,565,651	190,571	4,112,707	1,440,400	440,172	5,407,574	2,114,978
16 and over % with dose 1	97.55%	>99%	96.62%	91.26%	94.23%	95.77%	>99%	95.72%	>99%
16 and over % with dose 2	95.92%	>99%	95.12%	88.81%	92.68%	93.74%	>99%	94.27%	97.87%
5 to 11 - dose 1	1,190,443	31,720	355,498	13,136	206,194	83,599	28,439	324,234	140,038
5 to 11 - dose 2	903,462	27,372	276,078	8,805	150,407	63,803	23,186	246,691	102,507
5 to 11 - population	2,276,638	39,789	716,460	24,750	478,731	148,816	45,033	578,499	244,154
5 to 11 % with dose 1	52.29%	79.72%	49.62%	53.07%	43.07%	56.18%	63.15%	56.05%	57.36%
5 to 11 % with dose 2	39.68%	68.79%	38.53%	35.58%	31.42%	42.87%	51.49%	42.64%	41.98%
12 to 15 - dose 1	1,048,876	20,144	322,491	10,738	205,514	68,203	22,847	274,074	115,497
12 to 15 - dose 2	992,533	19,582	308,002	9,691	191,866	64,434	21,730	262,204	106,883
12 to 15 - population	1,243,990	19,693	390,330	13,060	270,146	82,747	26,308	308,611	132,869
12 to 15 % with dose 1	84.32%	>99%	82.62%	82.22%	76.08%	82.42%	86.84%	88.81%	86.93%
12 to 15 % with dose 2	79.79%	>99%	78.91%	74.20%	71.02%	77.87%	82.60%	84.96%	80.44%

*National population will not equal sum of listed jurisdictions due to a small number of people counted in national population residing in some 'other' territories. Sum of state doses will not add to national total as some records are unable to be geocoded to a State or Territory.
Doses sourced from Australian Immunisation Register, population from ABS ERP June 2020

Vaccinations by location

Cumulative total doses administered vs eligible state populations*

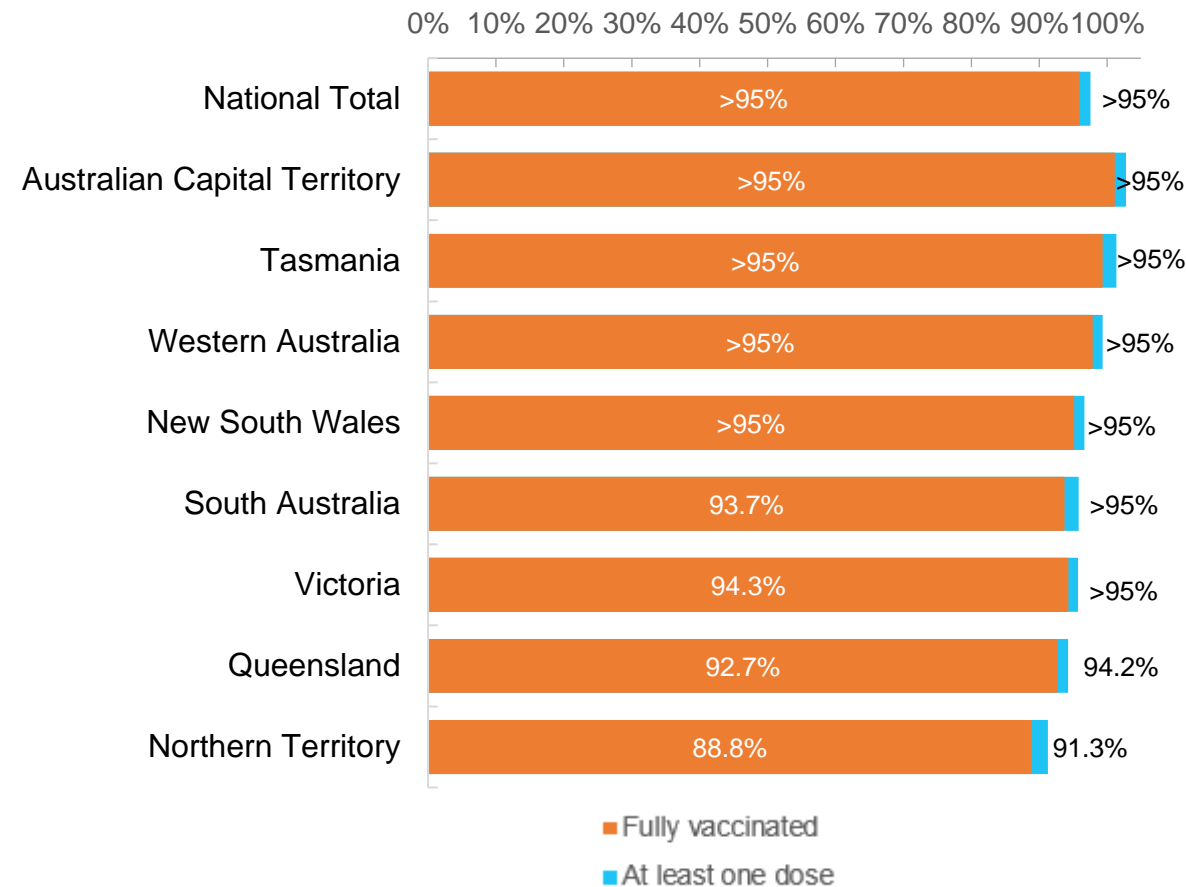


*Not an indication of percentage vaccinated, numbers will exceed 100 due to multiple doses required per person of the population. All doses are included for those aged 12 and above, and are based on vaccination provider location.

Data as at:
02 Jul 2022

Australia's COVID-19
Vaccine Roadmap

First and Second Doses by residential location



Aboriginal and Torres Strait Islander peoples

Number of people vaccinated

Data as at:
28 Jun 2022
Updated weekly

Australia's COVID-19
Vaccine Roadmap



443,113

people over the age of 16
have had at least one dose

85.0%

of people over the age of 16
have had at least one dose



424,811

people over the age of 16
are fully vaccinated

81.5%

of people over the age of 16 are
fully vaccinated



People aged 12 – 15 years

47,872

42,003

67.8%

At least one dose

59.5%

Fully vaccinated

178 Aboriginal community controlled health services (ACCHS)

0#

50

27

44

12

3

21

21

ACT

NSW

NT

QLD

SA

TAS

VIC

WA

Medicare Address State ^{##}	Individuals Dose 1	Individuals Dose 1 %	Individuals Dose 2	Individuals Dose 2 %
Australian Capital Territory	4,796	91.8%	4,674	89.5%
New South Wales	135,834	87.3%	132,792	85.4%
Northern Territory	41,467	89.7%	39,494	85.4%
Queensland	116,516	81.8%	111,181	78.1%
South Australia	20,051	80.5%	18,681	75.0%
Tasmania	13,878	88.8%	13,476	86.2%
Victoria	35,636	90.4%	34,853	88.4%
Western Australia	53,544	86.8%	49,909	80.9%
Unknown/Other Territories	21,391	70.4%	19,751	65.0%
Totals	443,113	85.0%	424,811	81.5%

Source: Australian Immunisation Register

*Identifying as Aboriginal and Torres Strait Islander is optional and the estimated population may be under reported.

**Includes all Aboriginal and Torres Strait Islander peoples who have received a vaccination, not limited to those administered in an ACCHS setting

#ACCHS in the ACT are currently operating as a Commonwealth Vaccine Clinics so not included to avoid double counting

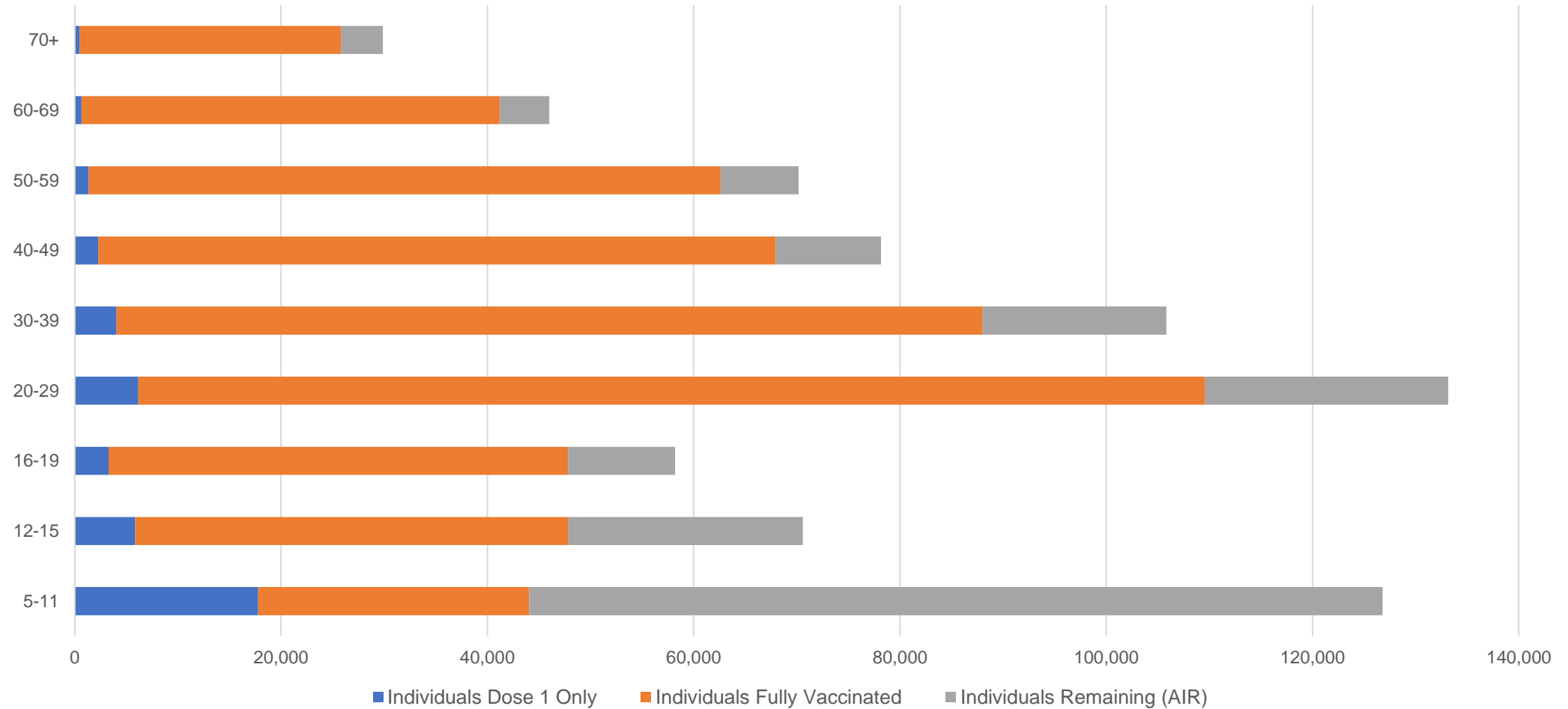
##The above table includes all identified Aboriginal and Torres Strait Islander people who are aged 16 and above by their state of residence.

Aboriginal and Torres Strait Islander peoples

Number of people vaccinated by age

Data as at:
28 Jun 2022
Updated weekly

Australia's COVID-19
Vaccine Roadmap



Source: Australian Immunisation Register

Commonwealth primary care

Data as at:
02 Jul 2022

Australia's COVID-19
Vaccine Roadmap



Primary care vaccine administration sites

5,701	128	178	3,613
GPs	CVCs	ACCHS	Pharmacies



37,729,898 total vaccine doses administered
primary care settings as at 02 July
+ 8,142 recorded in the last 24 hours

Primary care vaccinations by provider type

	Doses administered	Daily increase	7 day increase
General Practice* includes other Commonwealth	30,138,601	4,801	116,129
Pharmacy	7,591,297	3,341	56,163

NSW
13,010,398
(+2,953 daily increase)

VIC
9,359,849
(+2,039 daily increase)

QLD
7,266,611
(+1,466 daily increase)

WA
3,961,093
(+819 daily increase)

TAS
720,154
(+102 daily increase)

SA
2,274,141
(+650 daily increase)

ACT
596,868
(+259 daily increase)

NT
222,568
(+13 daily increase)

318,216

doses administered to persons
residing in other territories or with
missing residential information

*General practice includes Commonwealth Vaccination Clinics, Aboriginal Community Health Centres, Royal Flying Doctor Service and other Commonwealth vaccination facilities

Source: Australian Immunisation Register

Data as at:
02 Jul 2022

Commonwealth aged care and disability doses administered



1,318,050 (+ 37 last 24 hours)

Total vaccine doses administered in aged care and disability facilities as at 02 July

Number of doses administered as part of the Commonwealth aged and disability care rollout

NSW
572,406
(**<10** daily increase)

VIC
247,694
(**+27** daily increase)

QLD
209,874
(**<10** daily increase)

WA
112,409
(**<10** daily increase)

TAS
23,763
(**<10** daily increase)

SA
86,438
(**<10** daily increase)

ACT
17,965
(**<10** daily increase)

NT
7,710
(**<10** daily increase)

39,791

doses administered to persons residing in other territories or with missing residential information

*Sourced from the Australian Immunisation Register. Includes all persons vaccinated at participating residential aged care, disability and related industry settings.

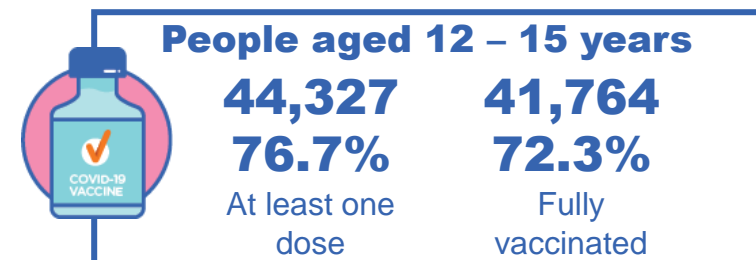
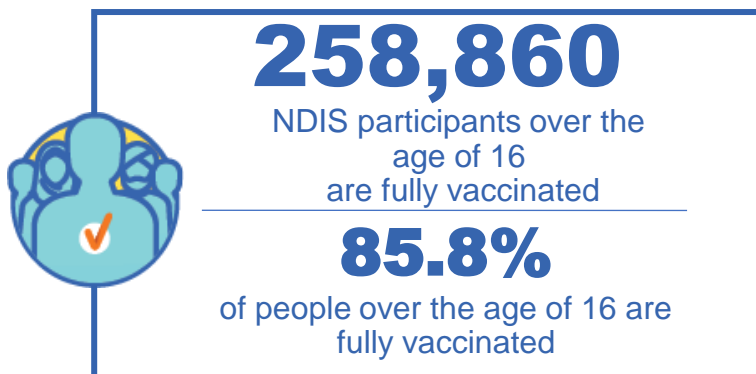
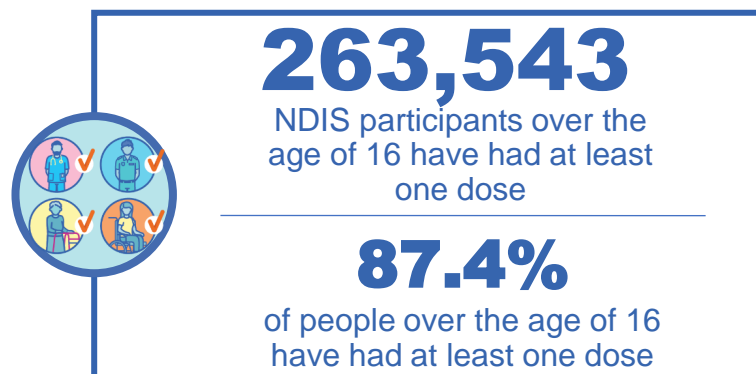
**State level breakdown indicates the residential location and may not align to the state in which the vaccination occurred.

Source: Australian Immunisation Register

National Disability Insurance Scheme (NDIS) reported vaccinations

Data as at:
30 June 2022
Updated weekly

Australia's COVID-19
Vaccine Roadmap



NDIS participant vaccinations

	People aged 16+ with at least one dose	People aged 16+ fully vaccinated	% People aged 16+ with at least one dose	% People aged 16+ fully vaccinated
ACT	4,957	4,893	89.3%	88.2%
NSW	80,634	79,372	87.8%	86.4%
NT	2,298	2,227	78.7%	76.3%
QLD	52,303	51,315	85.8%	84.2%
SA	21,582	21,083	85.2%	83.2%
TAS	6,583	6,430	87.6%	85.6%
VIC	69,988	68,840	88.5%	87.1%
WA	25,198	24,700	88.8%	87.0%
National	263,543	258,860	87.4%	85.8%

Source: Linkage between National Disability Insurance Agency data and the Australian Immunisation Register. Total NDIS participant numbers as at 30 May. Australian Immunisation Register data as at 29 June. Includes all participants regardless of residence type.

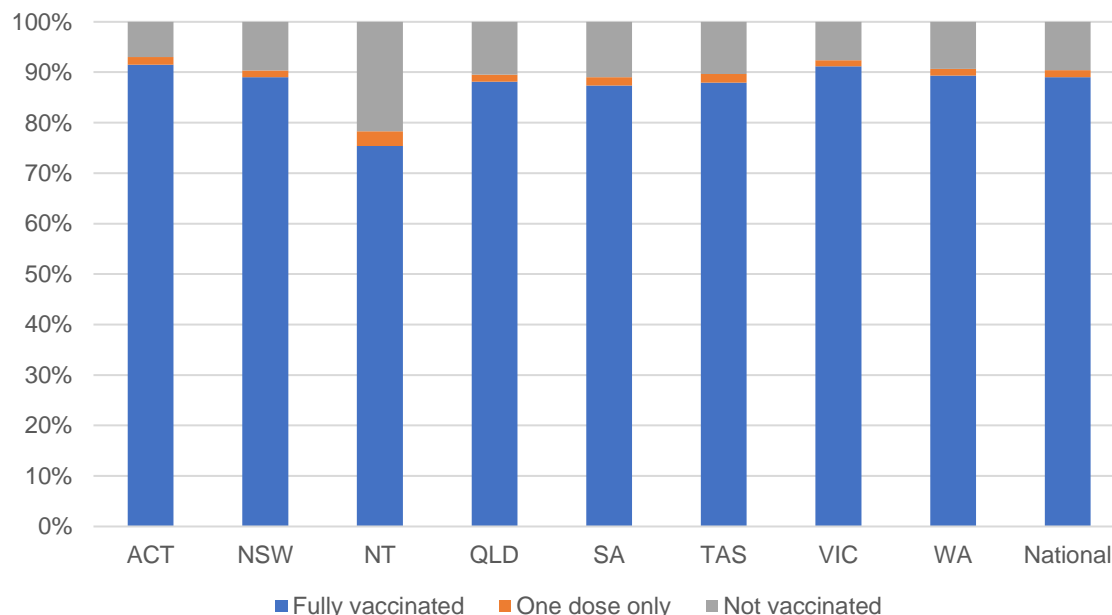
National Disability Insurance Scheme (NDIS) reported vaccinations

Data as at:
30 June 2022
Updated weekly

Australia's COVID-19
Vaccine Roadmap

NATIONAL	Total people with at least one dose	People fully vaccinated	Total number of individuals in cohort	% People with at least one dose	% People fully vaccinated
NDIS participants living in disability accommodation	21,298	20,973	23,469	90.7%	89.4%

NDIS participants in disability and aged care accommodation



Source: Linkage between National Disability Insurance Agency data and the Australian Immunisation Register. Includes participants residing in disability accommodation only.

Source: Total NDIS participant numbers as at 30 May. Participant data as at 29 June. Australian Immunisation Register data as at 29 June. Worker data as at 30 June.

NDIS workforce vaccinations

	NDIS workers with at least one dose	NDIS workers fully vaccinated	% NDIS workers with at least one dose	% NDIS workers fully vaccinated
NSW	127,532	122,353	98.2%	94.3%
VIC	118,277	114,994	98.5%	95.7%
QLD	71,506	70,666	97.9%	96.7%
WA	34,529	33,079	99.0%	94.8%
SA	35,855	33,971	98.5%	93.3%
TAS	12,437	12,025	98.8%	95.5%
ACT	12,329	12,302	99.8%	99.6%
NT	3,959	3,809	99.6%	95.8%
TOTAL	416,424	403,199	98.4%	95.3%

Source: the NDIS Commission has established a requirement for registered NDIS providers who provide intensive disability support services to report on the vaccination status of workers they employ, or otherwise engage, to deliver NDIS-funded supports and services, and who are required to be vaccinated in accordance with in-force state and territory public health orders. The statistics reflect data reported to the NDIS Commission by registered NDIS providers and should be considered indicative and subject to change

Note: Some registered NDIS providers are yet to report on the vaccination status of their workforce. The NDIS Commission is working with those providers around reporting requirements.

Remaining workers not included include those exempt from vaccination requirements, workers whose vaccination status is not yet verified by the provider (such as workers on leave) and provider reporting anomalies.

Residential aged care vaccination rollout

Residential aged care facilities status

176,490

People fully vaccinated

177,740

People with at least one dose

Australia's COVID-19 Vaccine Roadmap

Data as at:
30 June 2022
Updated weekly

Aged care resident vaccinations



Aged care worker vaccinations

Jurisdictions	Total workers with at least one dose	Workers fully vaccinated	% Workers with at least one dose	% Workers fully vaccinated
NSW	77,570	77,442	99.9%	99.7%
VIC	71,156	71,155	100.0%	100.0%
QLD	48,482	48,481	99.9%	99.8%
SA	27,012	27,005	100.0%	100.0%
WA	24,639	24,638	100.0%	100.0%
TAS	7,534	7,534	100.0%	100.0%
NT	920	920	100.0%	100.0%
ACT	2,953	2,953	100.0%	100.0%
Total	260,266	260,128	99.9%	99.9%

Source: Residential aged care provider self-reported COVID-19 vaccination information

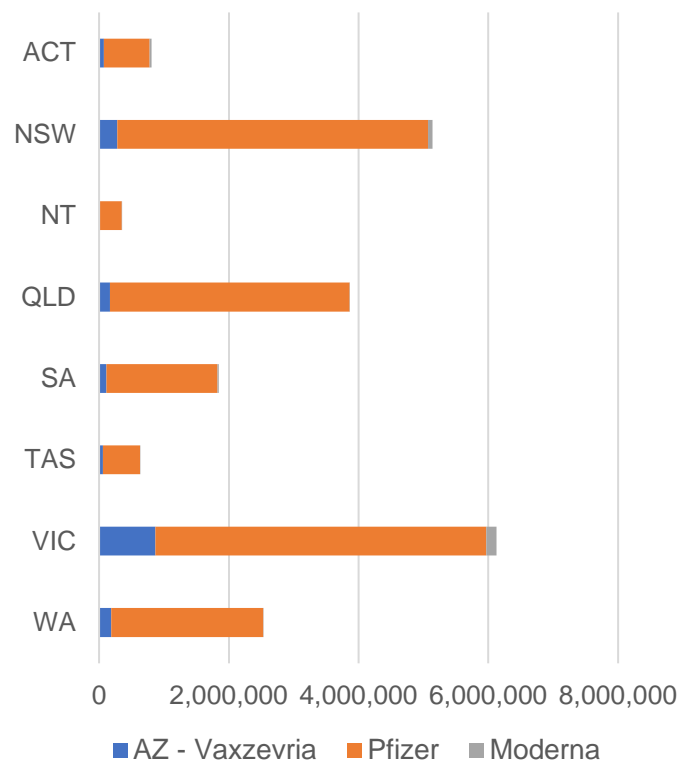
*Status updates are provided by facilities at least once per week. Reporting is updated Monday to Friday to encompass different facility updates being made on different days.

Data is sourced directly from Aged Care Service Providers and is not drawn or closely aligned with data from AIR due to inconsistencies and potential lags in uploading of records.

Data as at:
02 Jul 2022

Jurisdiction administered

Total vaccine doses administered in State and Territory clinics as at 02 July



21,309,324 total vaccine doses administered
in State and Territory clinics as at 02 July
+ **1,184** recorded in the last 24 hours
+ **18,543** recorded in the last 7 days

NSW
5,143,584
(**<10** daily increase)

VIC
6,134,328
(**+213** daily increase)

QLD
3,862,779
(**+45** daily increase)

WA
2,533,928
(**+273** daily increase)

TAS
629,451
(**+193** daily increase)

SA
1,848,293
(**+324** daily increase)

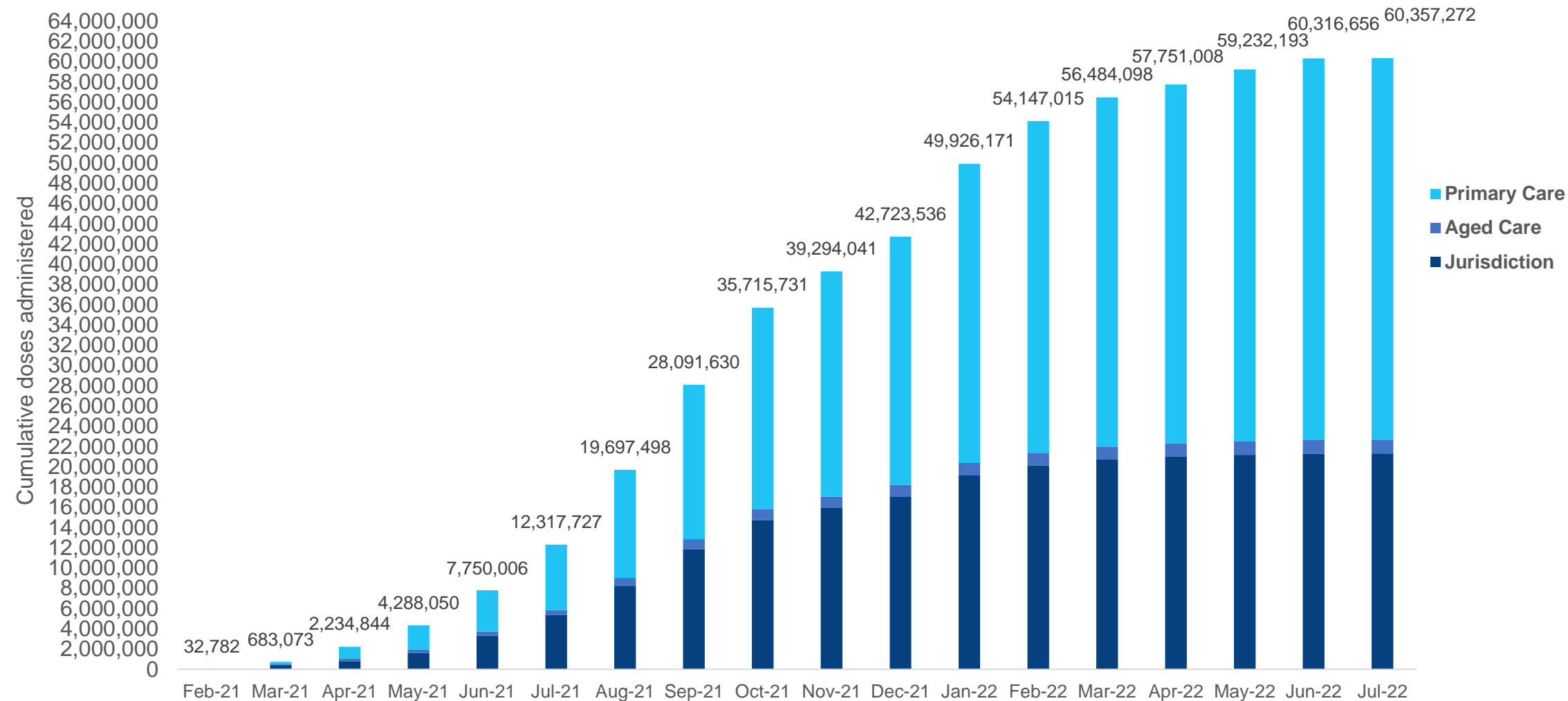
ACT
809,501
(**+129** daily increase)

NT
347,460
(**<10** daily increase)

*Sourced from the Australian Immunisation Register. Numbers are calculated as difference in daily cumulative reported numbers to allow for historical corrections.

Cumulative doses administered by channel

Data as at:
02 Jul 2022

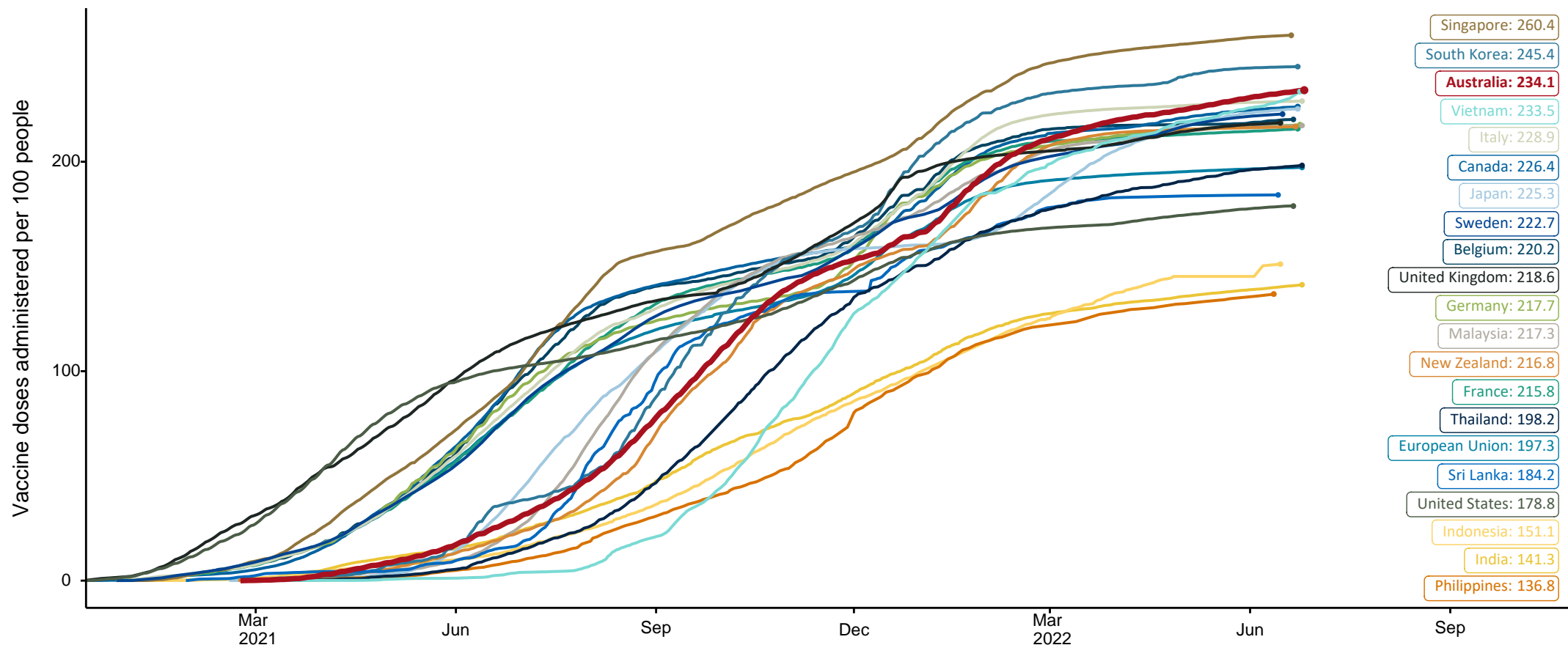


Source: Australian Immunisation Register

COVID-19 vaccine doses per 100, Australia and select countries

Data as at:
26 June 2022
Updated weekly

Australia's COVID-19
Vaccine Roadmap

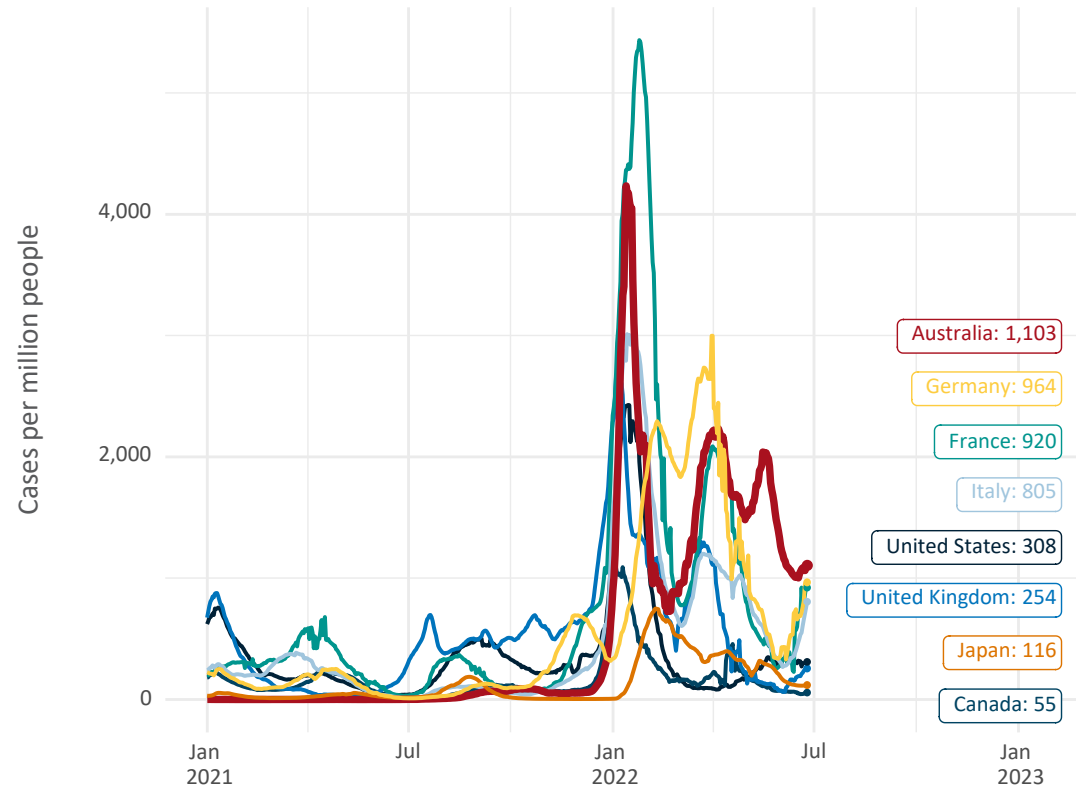


Note: From 11 January 2022, data for Australia includes all doses administered to people 5 and over. Prior to 11 January, data was for 12 and over.
Source: Department of Health (Australia), Our World in Data (international)
Latest data: 26 June

International data – COVID-19

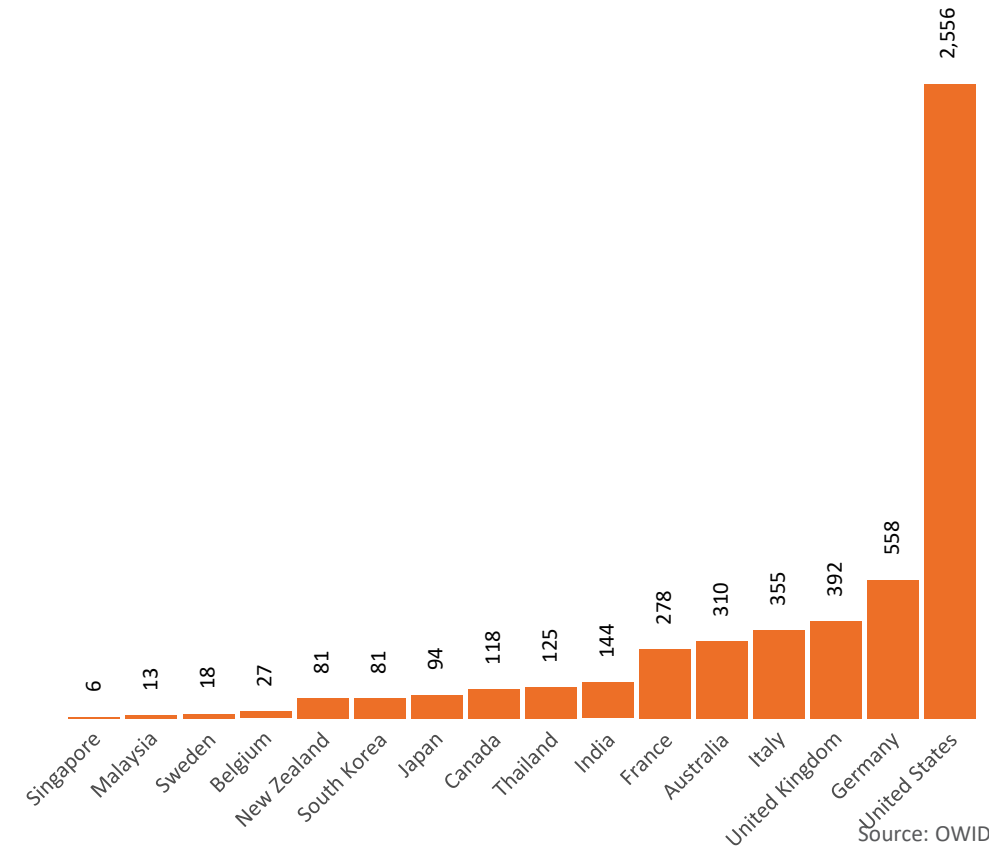
Data as at:
26 June 2022
Updated weekly

New daily cases per million since 2021, Australia and G7 countries
Smoothed - 7 day average



Source: OWID
Data downloaded: 27 Jun 2022 08:54
Latest data: 25 Jun 2022

COVID-19 deaths in past 7 days - Australia and select countries



Source: OWID
Data downloaded: 27 Jun 2022 08:54
Latest data: 25 Jun 2022