



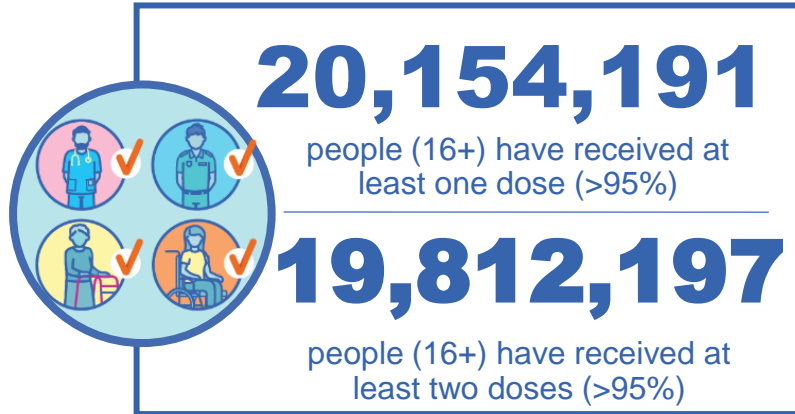
Australian Government
Operation COVID Shield

COVID-19 Vaccine Roll-out

27 July 2022

Data as at:
26 Jul 2022

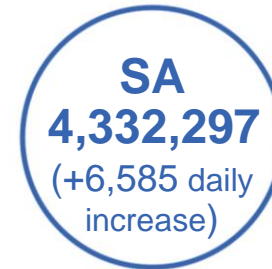
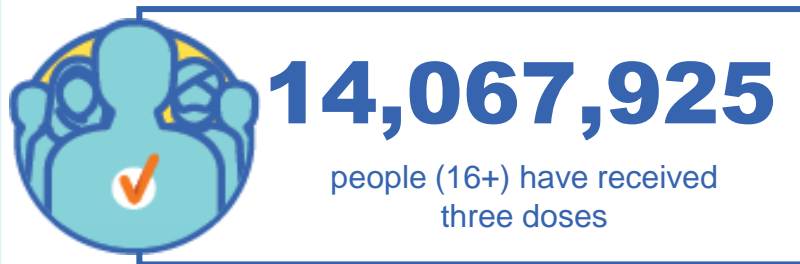
Total vaccine doses



62,032,927

total vaccine doses administered nationally as at 26 July

+92,091 recorded in the last 24 hours

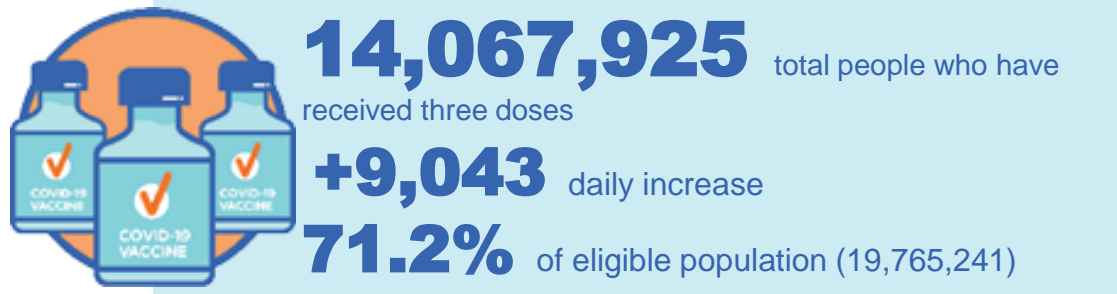
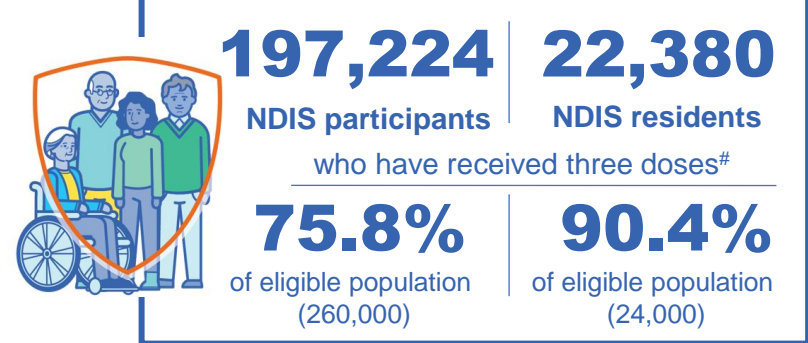
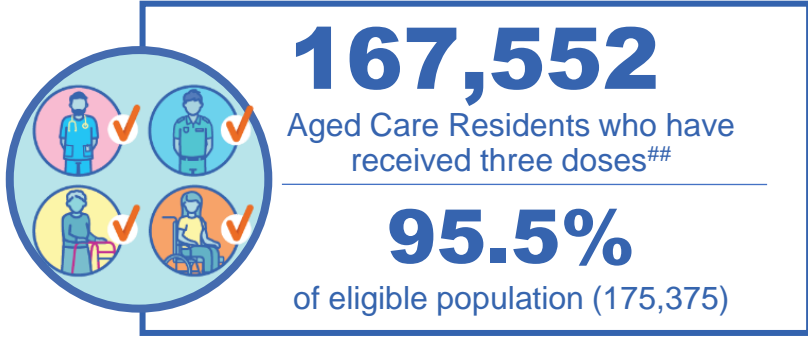
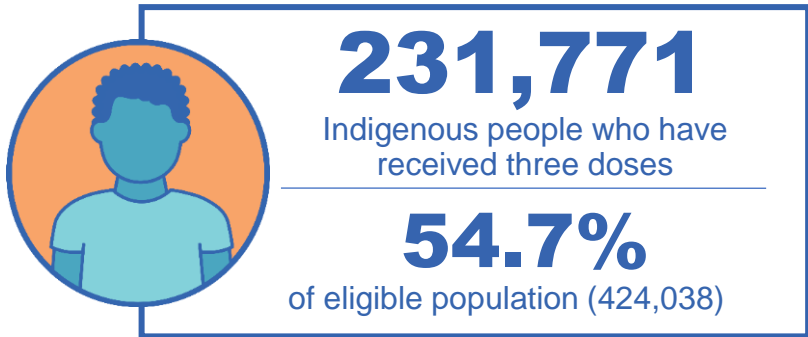


*Administration state breakdown indicates state in which a vaccine was administered

Source: Australian Immunisation Register

Data as at: 26 Jul 2022

Third Doses



	Number of People	Daily Increase	% of Eligible
NSW	4,301,672	3,028	68.9%
VIC	3,741,318	1,874	73.4%
QLD	2,445,843	2,185	64.2%
WA	1,715,152	595	82.9%
SA	1,010,179	695	74.9%
TAS	321,707	196	73.7%
ACT	276,957	175	79.6%
NT	132,252	70	78.4%

122,845

doses administered to persons residing in other territories or with missing residential information

*People may belong to multiple groups and could be represented in the above breakdowns multiple times.


NDIS participants data as at 25 July 2022. ## Aged Care Residents data as at 26 July 2022.

Source: Australian Immunisation Register

Fourth Doses

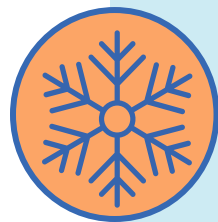
Data as at:
26 Jul 2022

Australia's COVID-19
Vaccine Program



102,400
Aged Care Residents who have received four doses#

77.5%
of eligible population (132,097)



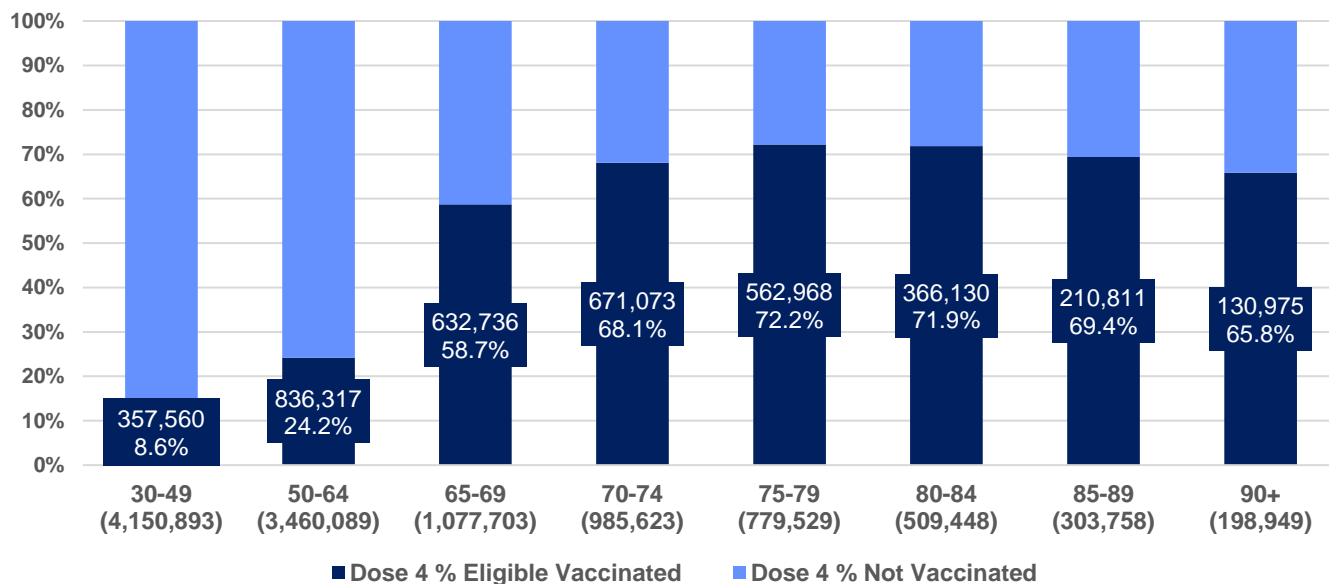
3,792,725
+78,193
32.9%
2,574,693
66.8%

total people (16+) who have received four doses
daily increase (16+)

of eligible population (30+) (11,465,992)

total people (65+) who have received four doses
of eligible 65+ population (3,855,010)

% Individuals eligible vaccinated by current age



	Number of People 16+	Daily Increase
ACT	74,490	1,939
NSW	1,220,494	25,251
NT	16,609	521
QLD	745,429	16,368
SA	304,329	5,675
TAS	102,051	1,895
VIC	929,970	19,036
WA	380,474	7,047

18,879

doses administered to persons residing in other territories or with missing residential information

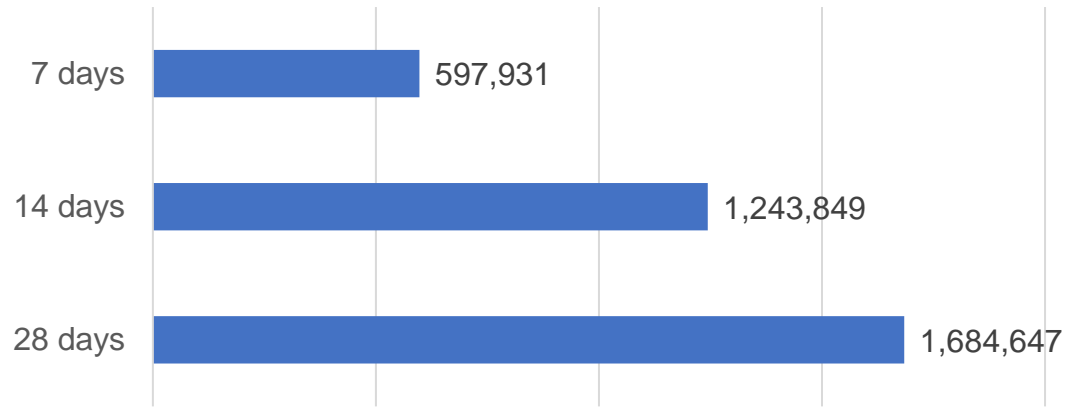
*People become eligible for a fourth dose three months after their third dose. Individuals may belong to multiple groups and could be represented in the above multiple times.
#Aged Care Residents data as at 24 July 2022.

Source: Australian Immunisation Register

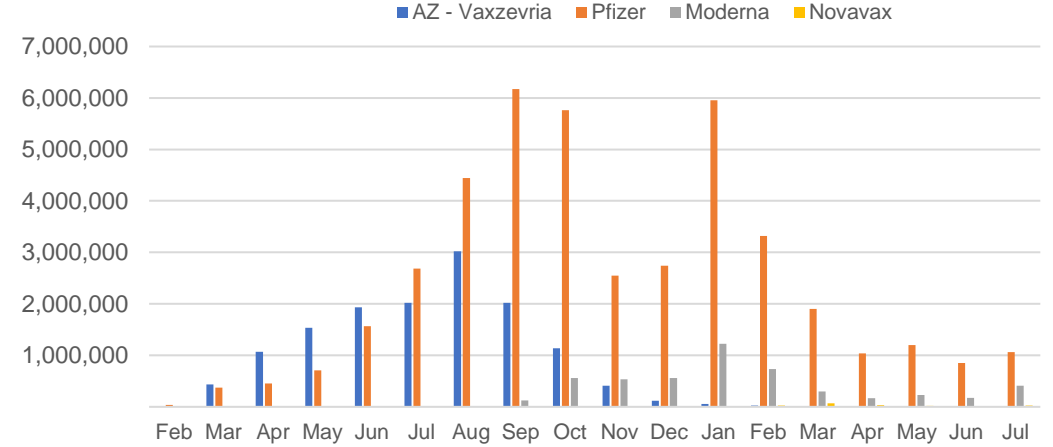
Vaccine milestone charts

Data as at:
24 Jul 2022
Updated weekly

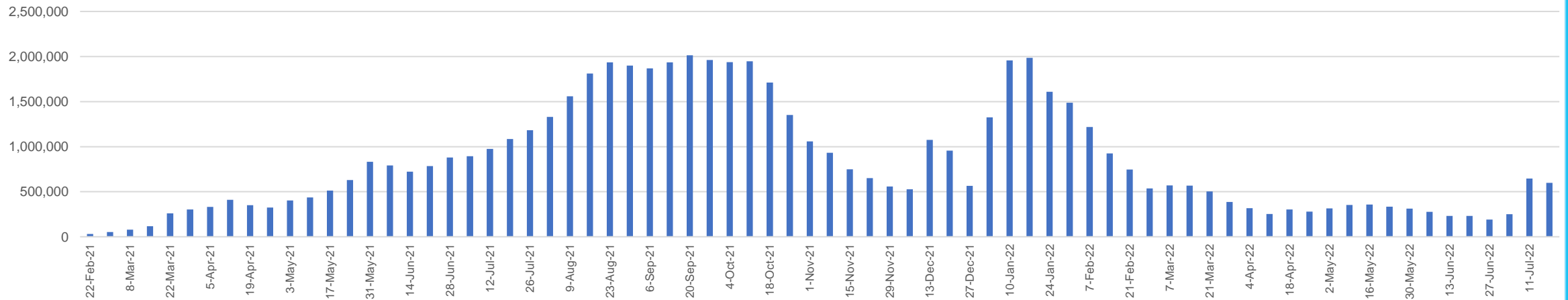
Doses Reported



Doses by administration month and vaccine type



Doses Administered by Week



*Sourced from the Australian Immunisation Register.

Data as at:
24 Jul 2022
Updated weekly

Doses by age and Jurisdiction

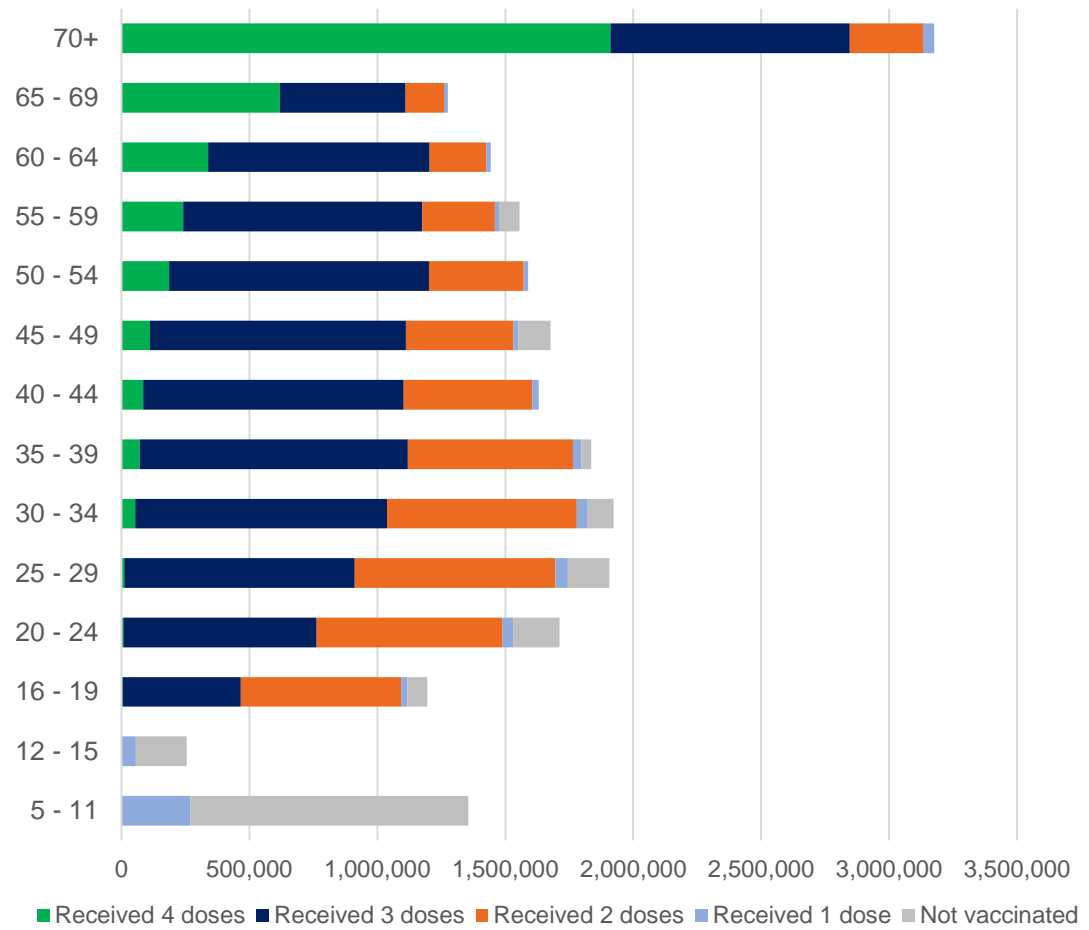
	AUS	ACT	NSW	NT	QLD	SA	TAS	VIC	WA
5 to 11 - dose 1	1,190,344	31,721	356,682	13,085	205,945	83,414	28,360	324,030	139,621
5 to 11 - dose 2	921,165	27,699	283,649	8,852	152,959	65,177	23,368	250,618	104,206
5 to 11 - population	2,276,638	39,789	716,460	24,750	478,731	148,816	45,033	578,499	244,154
5 to 11 % with dose 1	52.29%	79.72%	49.78%	52.87%	43.02%	56.05%	62.98%	56.01%	57.19%
5 to 11 % with dose 2	40.46%	69.61%	39.59%	35.77%	31.95%	43.80%	51.89%	43.32%	42.68%
12 to 15 - dose 1	1,045,659	20,131	321,809	10,691	204,769	67,999	22,730	273,215	115,242
12 to 15 - dose 2	989,324	19,577	307,484	9,619	191,065	64,256	21,607	261,218	106,650
12 to 15 - population	1,243,990	19,693	390,330	13,060	270,146	82,747	26,308	308,611	132,869
12 to 15 % with dose 1	84.06%	>99%	82.45%	81.86%	75.80%	82.18%	86.40%	88.53%	86.73%
12 to 15 % with dose 2	79.53%	>99%	78.78%	73.65%	70.73%	77.65%	82.13%	84.64%	80.27%
16 and over - dose 1	20,150,081	354,038	6,355,012	173,949	3,883,194	1,382,055	446,710	5,184,676	2,104,917
16 and over - dose 2	19,808,815	348,211	6,254,722	169,252	3,818,938	1,352,594	437,691	5,104,750	2,073,509
16 and over - dose 3	14,050,212	276,629	4,295,655	132,160	2,441,751	1,008,773	321,328	3,737,628	1,714,031
16 and over - population	20,619,959*	344,037	6,565,651	190,571	4,112,707	1,440,400	440,172	5,407,574	2,114,978
16 and over % with dose 1	97.72%	>99%	96.79%	91.28%	94.42%	95.95%	>99%	95.88%	>99%
16 and over % with dose 2	96.07%	>99%	95.26%	88.81%	92.86%	93.90%	>99%	94.40%	98.04%
16 and over % with dose 3	68.14%	80.41%	65.43%	69.35%	59.37%	70.03%	73.00%	69.12%	81.04%
30 and over - dose 1	15,758,151	273,681	4,997,462	128,340	3,034,685	1,100,098	354,796	4,049,257	1,648,327
30 and over - dose 2	15,530,470	269,793	4,928,700	125,733	2,993,036	1,081,436	349,019	3,994,654	1,627,506
30 and over - dose 3	11,909,320	226,898	3,679,209	103,706	2,130,138	864,947	277,890	3,126,784	1,410,502
30 and over - dose 4	3,617,751	70,242	1,162,137	15,436	711,204	291,802	97,789	886,944	364,493
30 and over - population	15,805,337	258,148	5,042,108	140,343	3,148,826	1,126,262	349,703	4,096,873	1,639,833
30 and over % with dose 1	>99%	>99%	>99%	91.45%	96.38%	97.68%	>99%	98.84%	>99%
30 and over % with dose 2	98.26%	>99%	97.75%	89.59%	95.05%	96.02%	>99%	97.50%	>99%
30 and over % with dose 3	75.35%	87.89%	72.97%	73.89%	67.65%	76.80%	79.46%	76.32%	86.01%
30 and over % with dose 4	22.89%	27.21%	23.05%	11.00%	22.59%	25.91%	27.96%	21.65%	22.23%
65 and over - dose 1	4,451,352	65,155	1,443,186	20,645	864,189	356,351	117,050	1,111,379	435,133
65 and over - dose 2	4,392,482	64,183	1,424,274	20,311	854,290	351,865	115,733	1,095,992	430,370
65 and over - dose 3	3,956,104	59,749	1,270,475	18,017	769,647	322,937	106,829	980,190	401,070
65 and over - dose 4	2,529,731	43,534	807,492	9,045	507,451	212,349	70,975	610,563	255,103
65 and over - population	4,192,882	57,745	1,366,640	20,994	831,881	338,903	110,799	1,057,498	407,530
65 and over % with dose 1	>99%	>99%	>99%	98.34%	>99%	>99%	>99%	>99%	>99%
65 and over % with dose 2	>99%	>99%	>99%	96.75%	>99%	>99%	>99%	>99%	>99%
65 and over % with dose 3	94.35%	>99%	92.96%	85.82%	92.52%	95.29%	96.42%	92.69%	98.41%
65 and over % with dose 4	60.33%	75.39%	59.09%	43.08%	61.00%	62.66%	64.06%	57.74%	62.60%

- *National population will not equal sum of listed jurisdictions due to a small number of people counted in national population residing in some 'other' territories. Sum of state doses will not add to national total as some records are unable to be geocoded to a State or Territory.

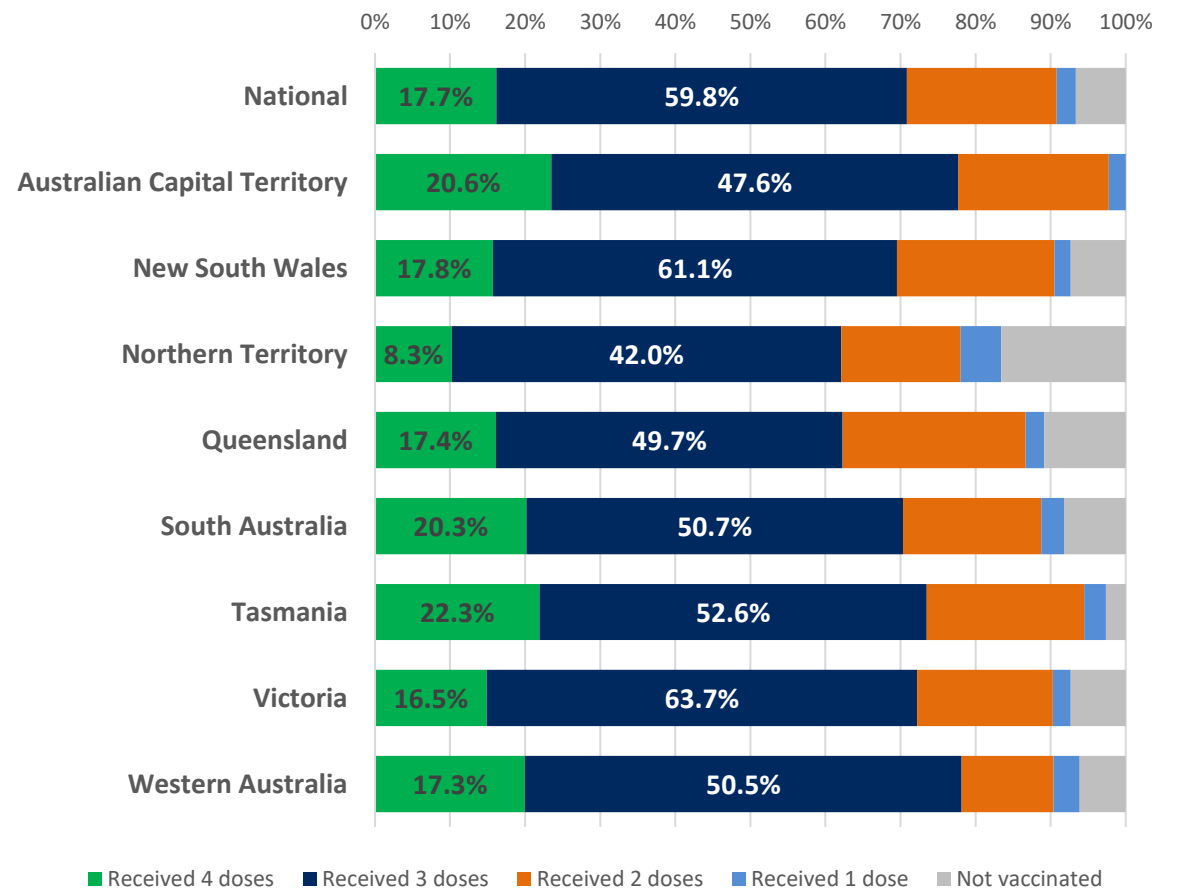
Data as at:
24 Jul 2022
Updated weekly

Vaccinations by age and location

Number of people vaccinated by age

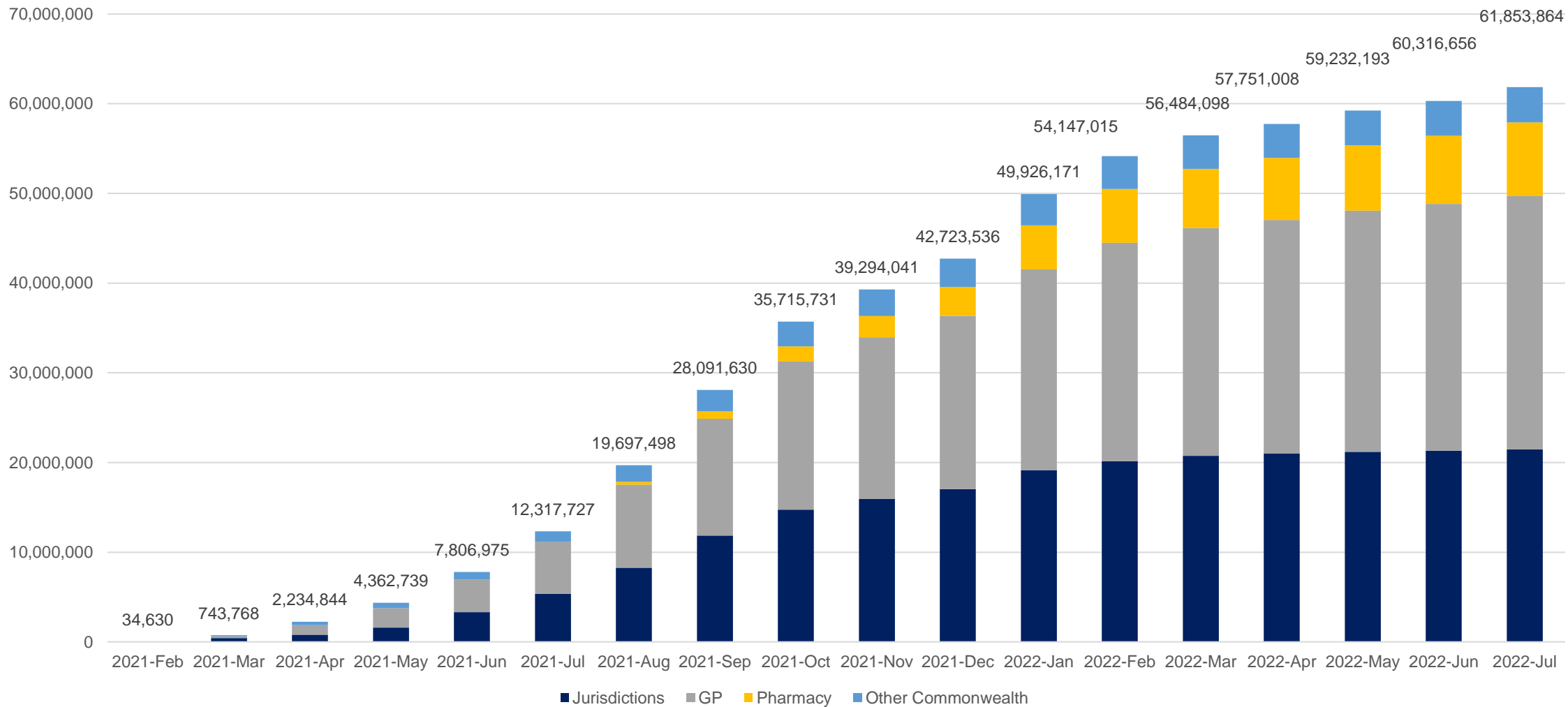


Individuals vaccinated by residential location



Data as at:
24 Jul 2022
Updated weekly

Cumulative doses administered by channel



Source: Australian Immunisation Register

Commonwealth primary care

Data as at:
24 Jul 2022
Updated weekly

Australia's COVID-19
Vaccine Program



Primary care vaccine administration sites

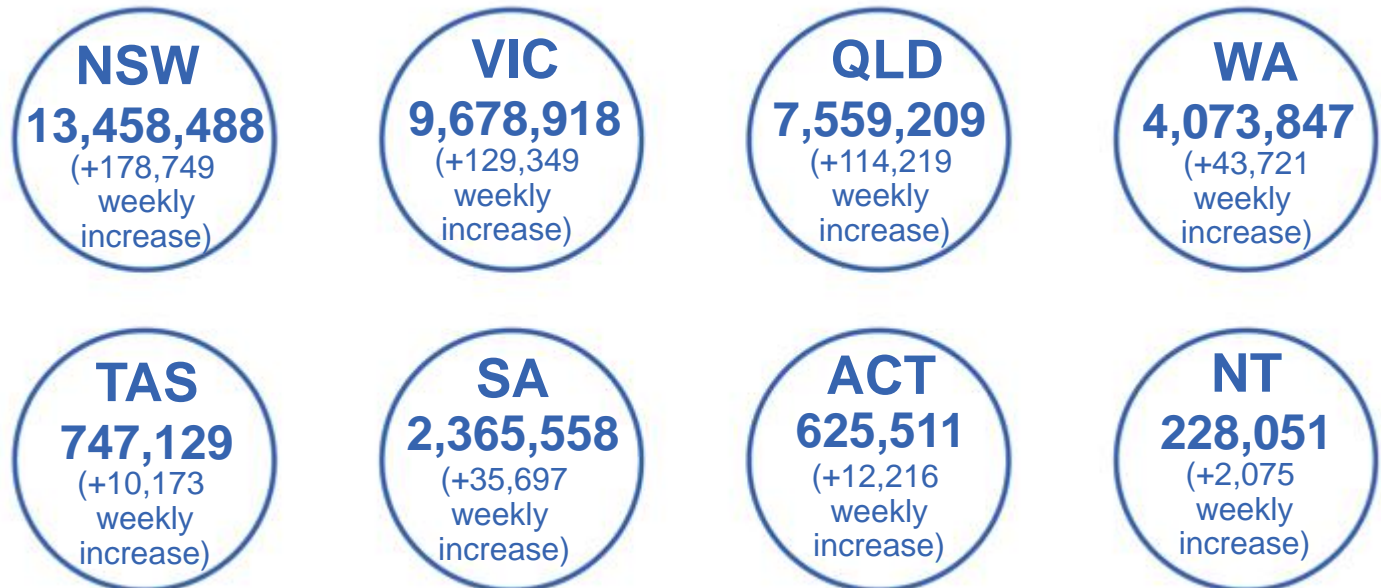
5,691	123	178	3,617
GPs	CVCs	ACCHS	Pharmacies



39,061,565 total vaccine doses administered
primary care settings as at 24 July
+ 530,519 recorded in the last week

Primary care vaccinations by provider type

	Doses administered	7 day increase
General Practice* includes other Commonwealth	30,836,653	278,628
Pharmacy	8,224,912	251,891



324,854

doses administered to persons residing in other territories or with missing residential information

*General practice includes Commonwealth Vaccination Clinics, Aboriginal Community Health Centres, Royal Flying Doctor Service and other Commonwealth vaccination facilities

Source: Australian Immunisation Register

Aboriginal and Torres Strait Islander peoples

Number of people vaccinated

Data as at:
24 Jul 2022
Updated weekly

Australia's COVID-19
Vaccine Program



445,306

people over the age of 16
have had at least one dose

85.0%

of people over the age of 16
have had at least one dose



427,143

people over the age of 16
have had two doses

81.6%

of people over the age of 16
have had two doses



People aged 12 – 15 years

47,643

41,727

67.5%

59.1%

At least one dose

Have had two doses

178 Aboriginal community controlled health services (ACCHS) sites

0#	50	27	44	12	3	21	21
ACT	NSW	NT	QLD	SA	TAS	VIC	WA

Medicare Address State##	Individuals Dose 1 % (16+)	Individuals Dose 2 % (16+)	Individuals Dose 3 % Eligible (aged 16+)	Individuals Dose 4 % Eligible (aged 30+)
Australian Capital Territory	91.8%	89.6%	63.6%	28.5%
New South Wales	87.4%	85.4%	51.1%	28.2%
Northern Territory	89.8%	85.6%	67.7%	17.0%
Queensland	81.9%	78.2%	47.5%	27.2%
South Australia	80.7%	75.2%	59.3%	28.3%
Tasmania	88.9%	86.3%	59.1%	30.6%
Victoria	90.5%	88.5%	60.9%	26.3%
Western Australia	86.8%	81.1%	64.0%	18.6%
Unknown/Other Territories	70.7%	65.4%	47.3%	14.2%
Totals	85.0%	81.6%	54.6%	25.0%

Source: Australian Immunisation Register

*Identifying as Aboriginal and Torres Strait Islander is optional and the estimated population may be under reported.

**Includes all Aboriginal and Torres Strait Islander peoples who have received a vaccination, not limited to those administered in an ACCHS setting

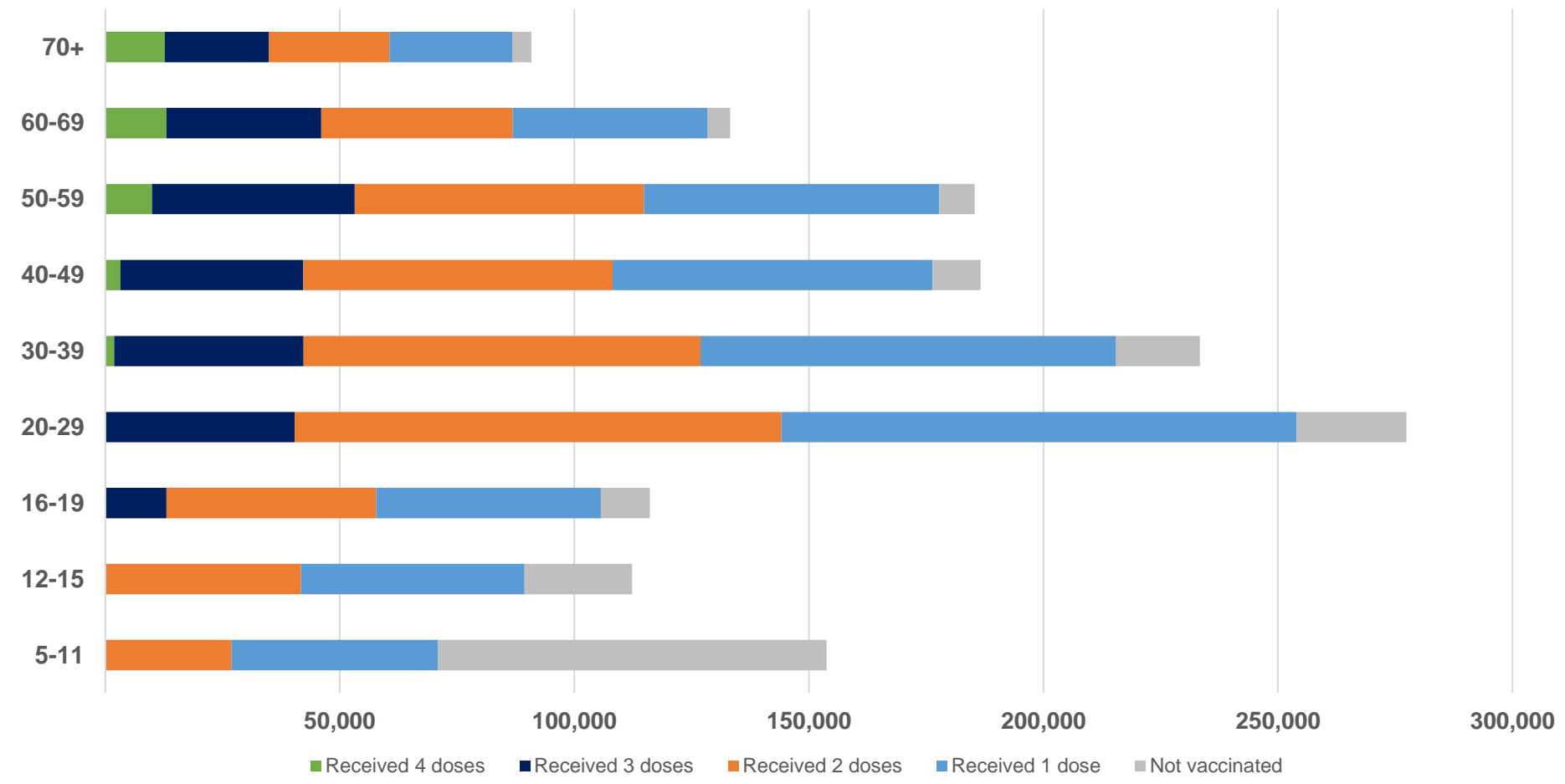
#ACCHS in the ACT are currently operating as a Commonwealth Vaccine Clinics so not included to avoid double counting

##The above table includes all identified Aboriginal and Torres Strait Islander people who are aged 16 and above by their state of residence.

Aboriginal and Torres Strait Islander peoples

Number of people vaccinated by age

Data as at:
24 Jul 2022
Updated weekly



Source: Australian Immunisation Register

Individuals with Culturally and Linguistically Diverse (CALD) backgrounds data

Data as at:
10 Jul 2022
Updated weekly

Australia's COVID-19
Vaccine Program

People over the age of 16

CALD population *	Total number of individuals in cohort	% People with at least one dose	% People who received two doses	% of eligible people who received three or more doses
General population	20,619,959	>95.0%	>95.0%	70.7%
People born overseas	4,451,667	94.4%	93.8%	71.6%
Speaks a language other than English at home	4,106,196	94.0%	93.3%	67.5%

	General population			Born Overseas			Speaks a language other than English at home		
	% with at least one dose	% who received two doses	% of eligible people who received three or more doses	% with at least one dose	% who received two doses	% of eligible people who received three or more doses	% with at least one dose	% who received two doses	% of eligible people who received three or more doses
ACT	>95.0%	>95.0%	79.2%	>95.0%	>95.0%	77.4%	>95.0%	94.9%	74.7%
NSW	>95.0%	>95.0%	68.3%	94.7%	94.2%	68.7%	94.0%	93.3%	64.1%
NT	91.3%	88.8%	78.2%	>95.0%	94.6%	87.4%	94.0%	93.5%	86.2%
Qld	94.3%	92.7%	63.6%	92.0%	91.3%	65.8%	92.3%	91.5%	62.3%
SA	>95.0%	93.8%	74.3%	92.5%	91.5%	73.4%	91.5%	90.4%	69.7%
Tas	>95.0%	>95.0%	73.2%	93.3%	92.7%	74.7%	93.3%	92.6%	70.7%
Vic	>95.0%	94.3%	73.0%	>95.0%	94.6%	71.9%	94.6%	94.0%	68.2%
WA	>95.0%	>95.0%	82.8%	>95.0%	94.4%	84.8%	>95.0%	94.5%	82.9%

*Individuals with Culturally and Linguistically Diverse (CALD) backgrounds are as reported in the 2021 Census, excluding those who have since departed Australia; those born in the UK, Ireland or NZ; and Aboriginal and/or Torres Strait Islander peoples. There is overlap across CALD cohorts where individuals may have reported they had more than one CALD characteristic in the 2021 Census.

Small negative changes may appear when compared with the previous report due to perturbation, in particular for small population groups.

Source: Australian Immunisation Register linked to the Multi-Agency Data Integration Project (Census 2021 characteristics)

Residential aged care vaccination rollout

Residential aged care facilities status

177,118	175,877	167,686	108,288
People with at least one dose	People with two doses	People with three doses	People with four doses

Data as at: 21 Jul 2022
Updated weekly

Aged care resident vaccinations



Aged care worker vaccinations

Jurisdictions	Total workers with at least one dose	Workers fully vaccinated	% Workers with at least one dose	% Workers fully vaccinated
NSW	77,201	77,077	99.9%	99.7%
VIC	70,754	70,754	100.0%	100.0%
QLD	48,927	48,915	100.0%	100.0%
SA	26,708	26,698	100.0%	100.0%
WA	24,883	24,878	100.0%	100.0%
TAS	7,538	7,538	100.0%	100.0%
NT	918	918	100.0%	100.0%
ACT	2,951	2,951	100.0%	100.0%
Total	259,880	259,729	100.0%	99.9%

Source: Residential aged care provider self-reported COVID-19 vaccination information

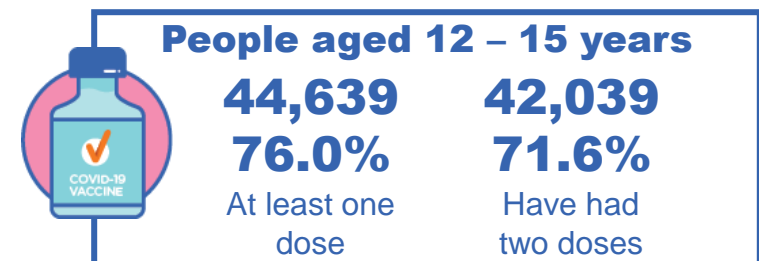
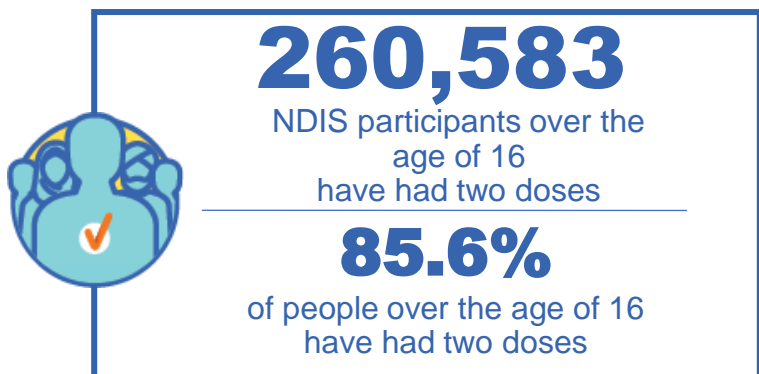
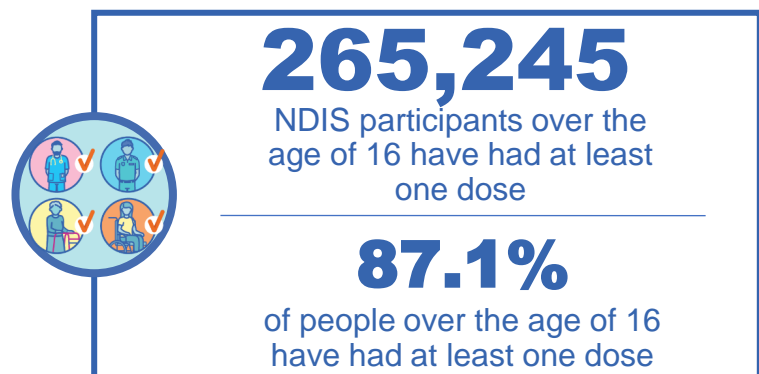
*Status updates are provided by facilities at least once per week. Reporting is updated Monday to Friday to encompass different facility updates being made on different days.

Data is sourced directly from Aged Care Service Providers and is not drawn or closely aligned with data from AIR due to inconsistencies and potential lags in uploading of records.

National Disability Insurance Scheme (NDIS) reported vaccinations

Data as at:
21 Jul 2022
Updated weekly

Australia's COVID-19
Vaccine Program



NDIS participant vaccinations

	% People aged 16+ with at least one dose	% People aged 16+ with two doses	% People aged 16+ with three doses	% People aged 16+ with four doses
ACT	89.1%	87.9%	83.1%	25.8%
NSW	87.6%	86.2%	74.5%	26.9%
NT	77.8%	75.4%	78.6%	20.7%
QLD	85.3%	83.7%	70.6%	22.0%
SA	84.9%	83.0%	77.4%	20.6%
TAS	87.4%	85.4%	75.6%	21.9%
VIC	88.3%	86.8%	77.3%	24.0%
WA	88.4%	86.7%	81.8%	23.9%
National	87.1%	85.6%	75.6%	24.1%

Source: Linkage between National Disability Insurance Agency data and the Australian Immunisation Register. Total NDIS participant numbers as at 30 June. Australian Immunisation Register data as at 20 July. Includes all participants regardless of residence type.

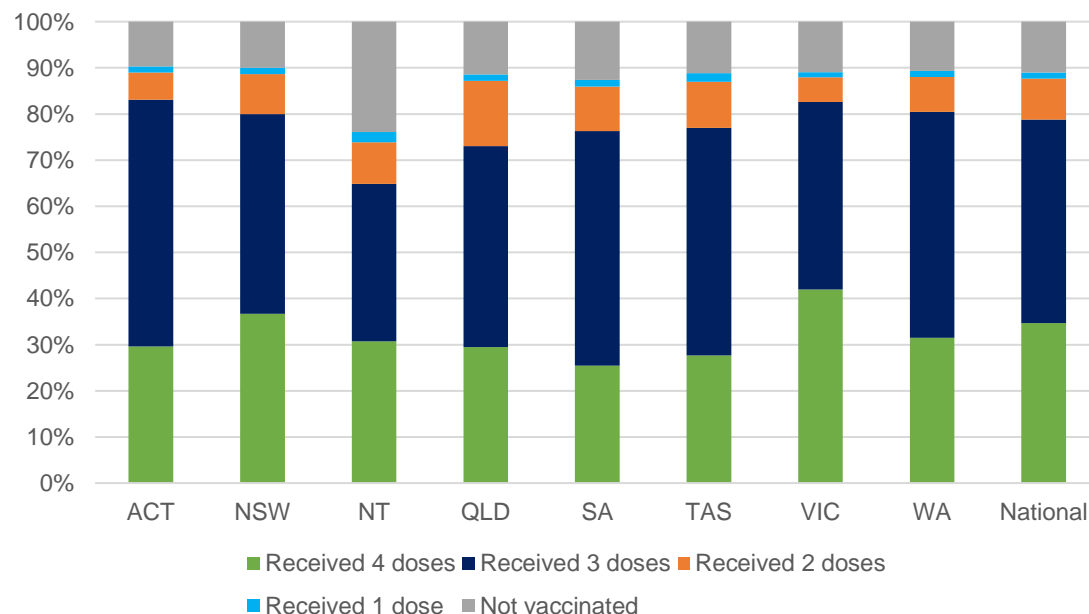
National Disability Insurance Scheme (NDIS) reported vaccinations

Data as at:
21 Jul 2022
Updated weekly

Australia's COVID-19
Vaccine Program

NATIONAL	Total people with at least one dose	People fully vaccinated	Total number of individuals in cohort	% People with at least one dose	% People fully vaccinated
NDIS participants living in disability accommodation	21,222	20,901	23,858	89.0%	87.6%

NDIS participants in disability and aged care accommodation



Source: Linkage between National Disability Insurance Agency data and the Australian Immunisation Register. Includes participants residing in disability accommodation only.
Source: Total NDIS participant numbers as at 30 June. Participant data as at 19 July. Australian Immunisation Register data as at 20 July. Worker data as at 21 July.

NDIS workforce vaccinations

	NDIS workers with at least one dose	NDIS workers fully vaccinated	% NDIS workers with at least one dose	% NDIS workers fully vaccinated
NSW	128,331	123,529	98.4%	94.7%
VIC	117,364	114,279	97.8%	95.2%
QLD	71,454	70,608	97.9%	96.8%
WA	34,486	33,118	98.9%	95.0%
SA	35,781	34,094	98.6%	93.9%
TAS	12,423	12,039	98.5%	95.5%
ACT	12,337	12,310	99.8%	99.6%
NT	3,965	3,817	99.6%	95.9%
TOTAL	416,141	403,794	98.3%	95.3%

Source: the NDIS Commission has established a requirement for registered NDIS providers who provide intensive disability support services to report on the vaccination status of workers they employ, or otherwise engage, to deliver NDIS-funded supports and services, and who are required to be vaccinated in accordance with in-force state and territory public health orders. The statistics reflect data reported to the NDIS Commission by registered NDIS providers and should be considered indicative and subject to change

Note: Some registered NDIS providers are yet to report on the vaccination status of their workforce. The NDIS Commission is working with those providers around reporting requirements.

Remaining workers not included include those exempt from vaccination requirements, workers whose vaccination status is not yet verified by the provider (such as workers on leave) and provider reporting anomalies.