



Australian Government
Operation COVID Shield

COVID-19 Vaccine Roll-out

24 July 2022

Data as at:
23 Jul 2022

Total vaccine doses



61,838,339 total vaccine
doses administered nationally as at 23 July
+43,852 recorded in the last 24 hours



20,149,035

people have had at least one
dose

>95%

of people over the age of 16
have had at least one dose



19,807,825

people are fully vaccinated

>95%

of people over the age of 16 are
fully vaccinated



14,048,459

people over the age of 16
who have received three or
more doses

NSW
19,207,632
(+14,732 daily
increase)

VIC
16,173,781
(+10,957 daily
increase)

QLD
11,724,417
(+7,325 daily
increase)

WA
6,780,798
(+4,956 daily
increase)

TAS
1,406,152
(+1,265 daily
increase)

SA
4,318,049
(+3,169 daily
increase)

ACT
1,623,914
(+1,328 daily
increase)

NT
603,596
(+120 daily
increase)

*Administration state breakdown indicates state in which a vaccine was administered

**Overall dose count includes instances of more than three doses per person in a small number of cases.

Source: Australian Immunisation Register

Booster Vaccinations

Data as at:
23 Jul 2022



231,173

Indigenous people who have
received three or more doses

54.6%

of eligible population (423,689)



167,686

Aged Care Residents who have
received three or more doses##

95.3%

of eligible population (175,877)



196,411

NDIS participants

who have received three or more doses#

75.6%

of eligible population
(259,000)

22,328

NDIS residents

90.2%

of eligible population
(24,000)



14,048,459

total people who have
received three or more doses

+4,469 daily increase

71.1% of eligible population (19,760,265)

	Number of People	Daily Increase	% of Eligible
NSW	4,295,088	1,550	68.8%
VIC	3,737,336	959	73.3%
QLD	2,441,431	751	64.1%
WA	1,713,894	223	82.9%
SA	1,008,627	333	74.8%
TAS	321,272	106	73.6%
ACT	276,607	82	79.6%
NT	132,161	<10	78.4%

*People may belong to multiple groups and could be represented in the above breakdowns multiple times.

NDIS participants data as at 19 July 2022.

Aged Care Residents data as at 22 July 2022.

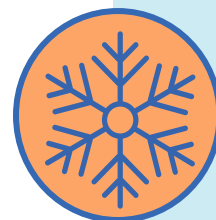
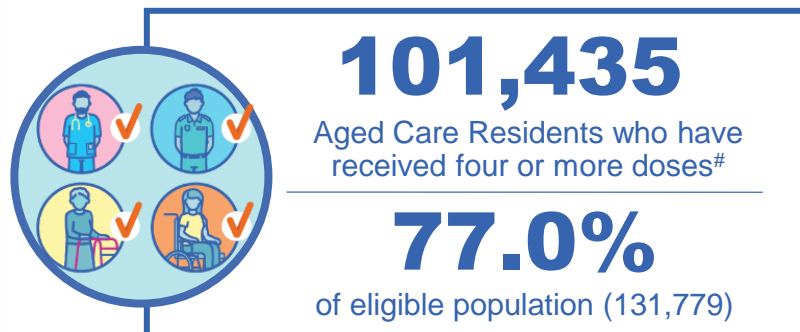
Source: Australian Immunisation Register

122,043 doses administered to persons
residing in other territories or with
missing residential information

Fourth Doses

Data as at:
23 Jul 2022

Australia's COVID-19
Vaccine Roadmap



3,628,248
36,055
31.5%
2,527,210
65.6%

total people (16+) who have received four doses

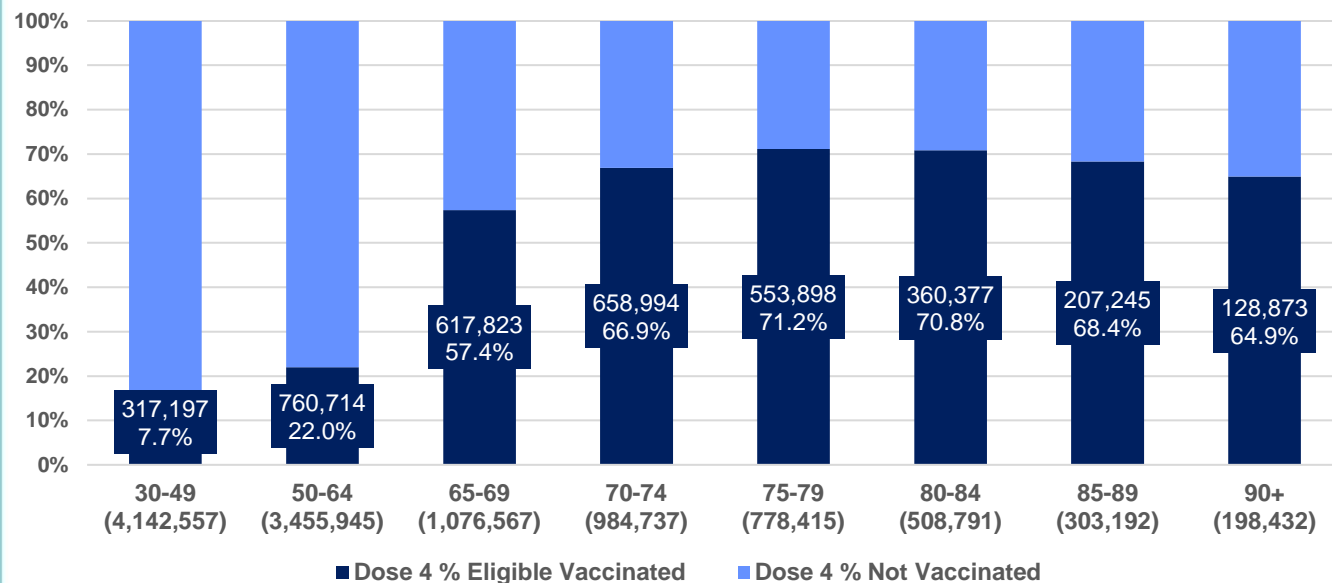
daily increase (16+)

of eligible population (30+) (11,448,636)

total people (65+) who have received four doses

of eligible population (65+) (3,850,134)

% Individuals eligible vaccinated by current age



	Number of People 16+	Daily Increase
ACT	70,845	878
NSW	1,166,719	11,738
NT	15,743	82
QLD	712,301	5,891
SA	292,127	2,666
TAS	97,802	1,081
VIC	890,037	9,077
WA	364,852	4,281

17,822

doses administered to persons residing in other territories or with missing residential information

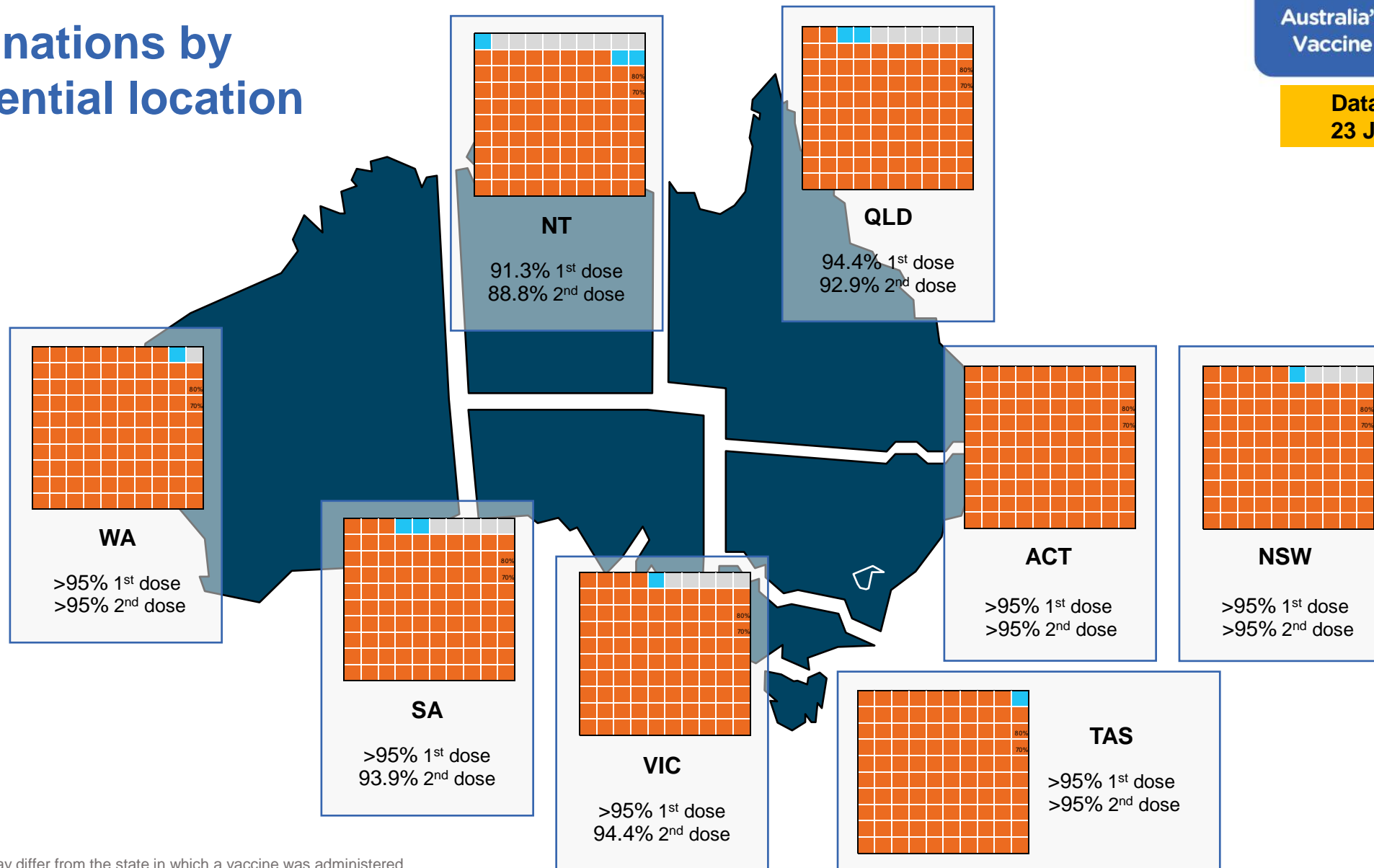
*People become eligible for a fourth dose three months after their third dose. Individuals may belong to multiple groups and could be represented in the above multiple times.
#Aged Care Residents data as at 21 July 2022.

Source: Australian Immunisation Register

Vaccinations by residential location

Australia's COVID-19
Vaccine Roadmap

Data as at:
23 Jul 2022



*Residential state may differ from the state in which a vaccine was administered

Commonwealth and Jurisdiction vaccine doses administered

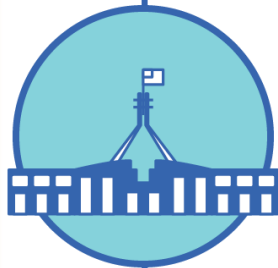
Data as at:
23 Jul 2022



61,838,339 total vaccine
doses administered nationally as at 23 July
+ 43,852 recorded in the last 24 hours



21,465,520
doses administered by state
and territory facilities
+ 7,252
recorded in the last 24 hours



40,372,819
doses administered by
commonwealth facilities
+ 36,600
recorded in the last 24 hours

39,048,458 total vaccine doses
administered in primary care settings
1,324,361 total vaccine doses
administered in aged care and disability
settings

NSW	Jurisdictions	Commonwealth
Cumulative	5,178,878	14,028,754
Daily increase	2,314	12,418

VIC	Jurisdictions	Commonwealth
Cumulative	6,165,192	10,008,589
Daily increase	1,418	9,539

QLD	Jurisdictions	Commonwealth
Cumulative	3,876,884	7,847,533
Daily increase	227	7,098

WA	Jurisdictions	Commonwealth
Cumulative	2,566,412	4,214,386
Daily increase	1,657	3,299

TAS	Jurisdictions	Commonwealth
Cumulative	638,358	767,794
Daily increase	742	523

SA	Jurisdictions	Commonwealth
Cumulative	1,871,413	2,446,636
Daily increase	670	2,499

ACT	Jurisdictions	Commonwealth
Cumulative	819,814	804,100
Daily increase	224	1,104

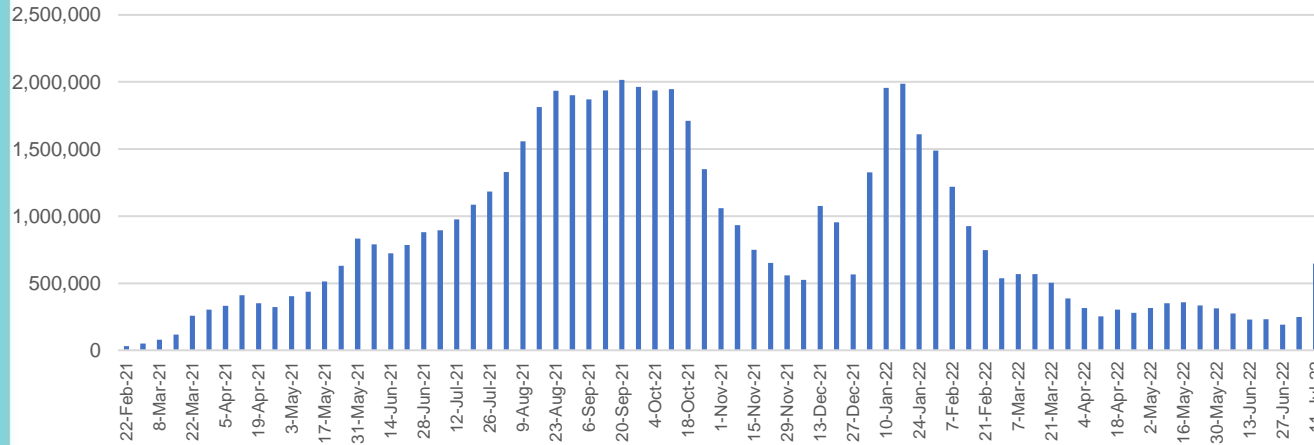
NT	Jurisdictions	Commonwealth
Cumulative	348,569	255,027
Daily increase	<10	120

Vaccine milestone charts

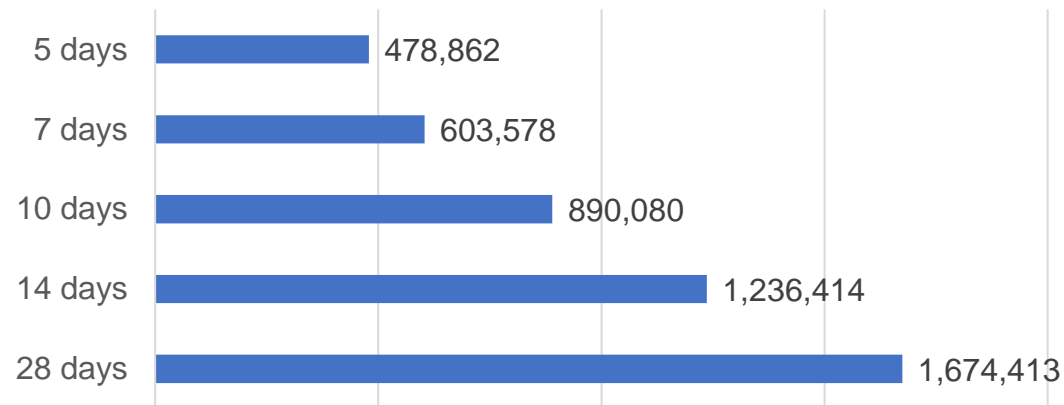
Data as at:
23 Jul 2022

Australia's COVID-19
Vaccine Roadmap

Doses Administered by Week



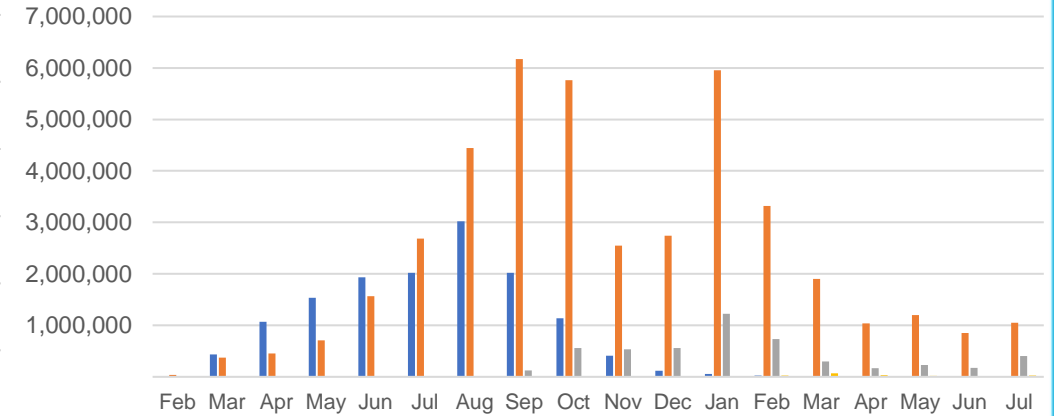
Doses Reported



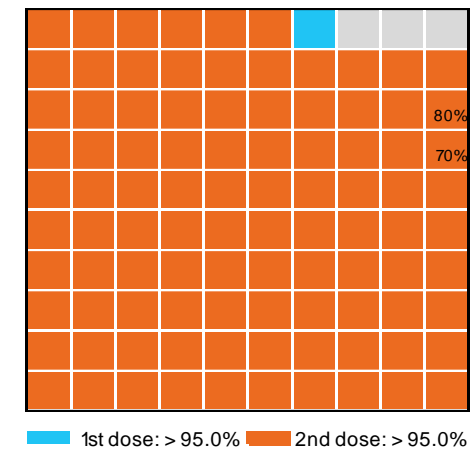
*Sourced from the Australian Immunisation Register.

Doses by administration month and vaccine type

AZ - Vaxzevria Pfizer Moderna Novavax



Eligible population percentage coverage



*Each square represents 1% of the national population.
Squares are filled as milestones are achieved.

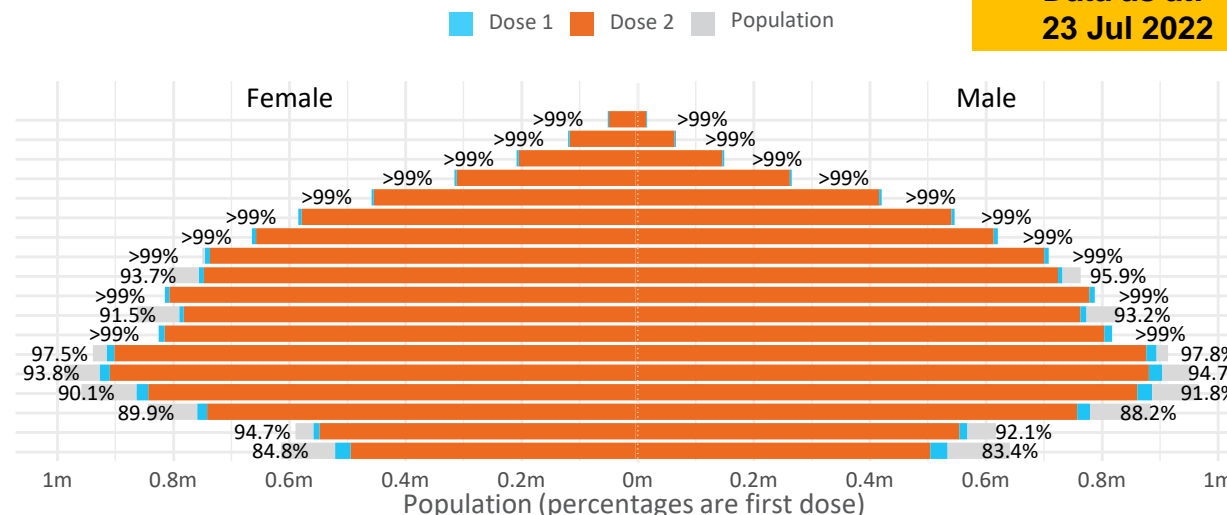
Data as at:
23 Jul 2022

Doses by age and sex

First and second doses by age and sex

	16+	50+	12-15	5-11
Dose 1	97.72% (20,149,035 doses / 20,619,959 people)	>99% (8,957,685 doses / 8,749,703 people)	84.09% (1,046,130 doses / 1,243,990 people)	52.29% (1,190,567 doses / 2,276,638 people)
Dose 2	96.06% (19,807,825 doses / 20,619,959 people)	>99% (8,847,642 doses / 8,749,703 people)	79.57% (989,809 doses / 1,243,990 people)	40.46% (921,109 doses / 2,276,638 people)

Age	Dose 1	Dose 2
95+	67,223 (>99%)	63,720 (>99%)
90-94	184,420 (>99%)	178,921 (>99%)
85-89	354,486 (>99%)	347,711 (>99%)
80-84	575,911 (>99%)	568,716 (>99%)
75-79	871,615 (>99%)	862,944 (>99%)
70-74	1,121,697 (>99%)	1,109,911 (>99%)
65-69	1,275,235 (>99%)	1,259,810 (>99%)
60-64	1,442,196 (>99%)	1,425,180 (>99%)
55-59	1,476,070 (94.9%)	1,459,047 (93.8%)
50-54	1,588,832 (>99%)	1,571,682 (>99%)
45-49	1,550,181 (92.5%)	1,531,674 (91.3%)
40-44	1,630,166 (>99%)	1,606,022 (>99%)
35-39	1,797,059 (97.9%)	1,764,562 (96.2%)
30-34	1,822,090 (94.7%)	1,779,641 (92.5%)
25-29	1,744,345 (91.5%)	1,695,967 (89.0%)
20-24	1,530,257 (89.4%)	1,489,290 (87.0%)
16-19	1,117,252 (93.4%)	1,093,027 (91.4%)
12-15	1,046,130 (84.1%)	989,809 (79.6%)



	AUS	ACT	NSW	NT	QLD	SA	TAS	VIC	WA
16 and over - dose 1	20,149,035	354,018	6,354,717	173,958	3,883,015	1,382,026	446,691	5,184,458	2,104,823
16 and over - dose 2	19,807,825	348,194	6,254,443	169,262	3,818,771	1,352,567	437,673	5,104,549	2,073,423
16 and over - population	20,619,959*	344,037	6,565,651	190,571	4,112,707	1,440,400	440,172	5,407,574	2,114,978
16 and over % with dose 1	97.72%	>99%	96.79%	91.28%	94.42%	95.95%	>99%	95.87%	>99%
16 and over % with dose 2	96.06%	>99%	95.26%	88.82%	92.85%	93.90%	>99%	94.40%	98.04%
5 to 11 - dose 1	1,190,567	31,721	356,750	13,089	205,992	83,427	28,365	324,097	139,644
5 to 11 - dose 2	921,109	27,698	283,617	8,854	152,957	65,163	23,358	250,630	104,201
5 to 11 - population	2,276,638	39,789	716,460	24,750	478,731	148,816	45,033	578,499	244,154
5 to 11 % with dose 1	52.29%	79.72%	49.79%	52.88%	43.03%	56.06%	62.99%	56.02%	57.20%
5 to 11 % with dose 2	40.46%	69.61%	39.59%	35.77%	31.95%	43.79%	51.87%	43.32%	42.68%
12 to 15 - dose 1	1,046,130	20,137	321,949	10,690	204,863	68,028	22,743	273,344	115,293
12 to 15 - dose 2	989,809	19,583	307,630	9,623	191,168	64,284	21,620	261,353	106,692
12 to 15 - population	1,243,990	19,693	390,330	13,060	270,146	82,747	26,308	308,611	132,869
12 to 15 % with dose 1	84.09%	>99%	82.48%	81.85%	75.83%	82.21%	86.45%	88.57%	86.77%
12 to 15 % with dose 2	79.57%	>99%	78.81%	73.68%	70.76%	77.69%	82.18%	84.69%	80.30%

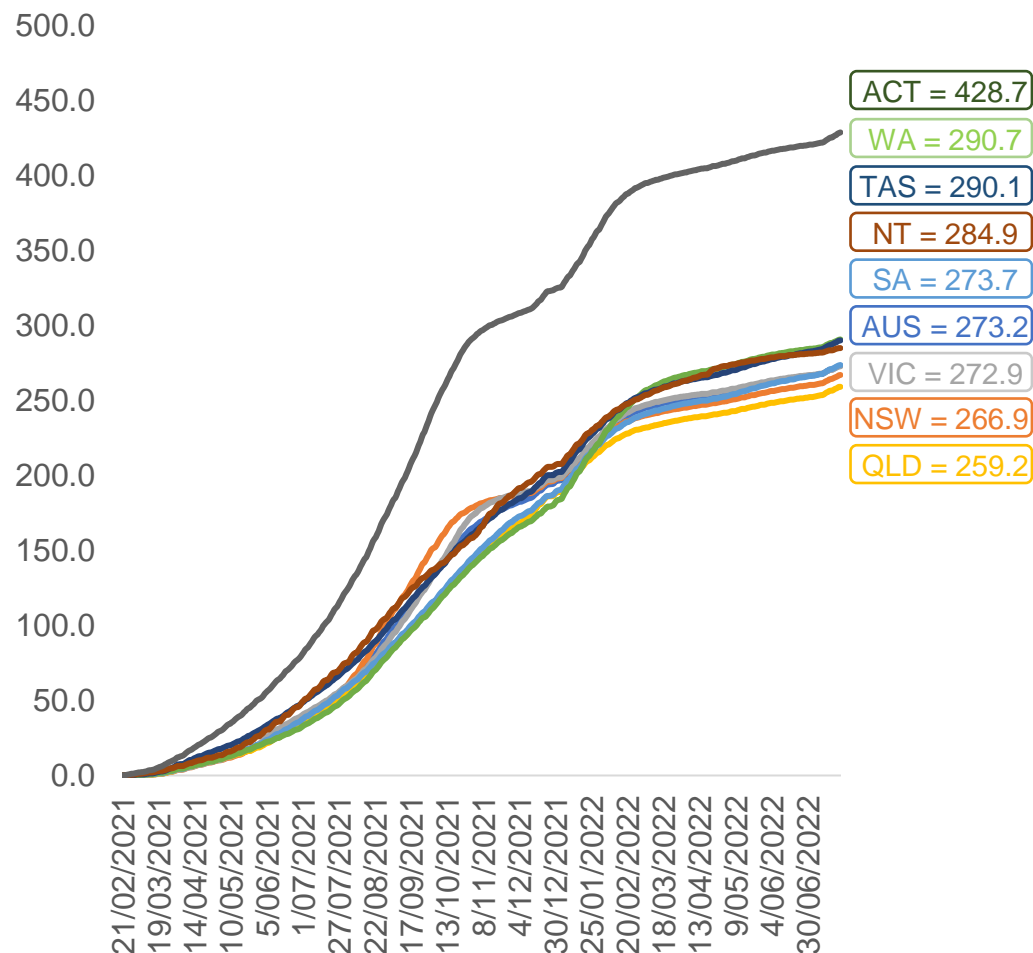
*National population will not equal sum of listed jurisdictions due to a small number of people counted in national population residing in some 'other' territories. Sum of state doses will not add to national total as some records are unable to be geocoded to a State or Territory.
Doses sourced from Australian Immunisation Register, population from ABS ERP June 2020

Vaccinations by location

Data as at:
23 Jul 2022

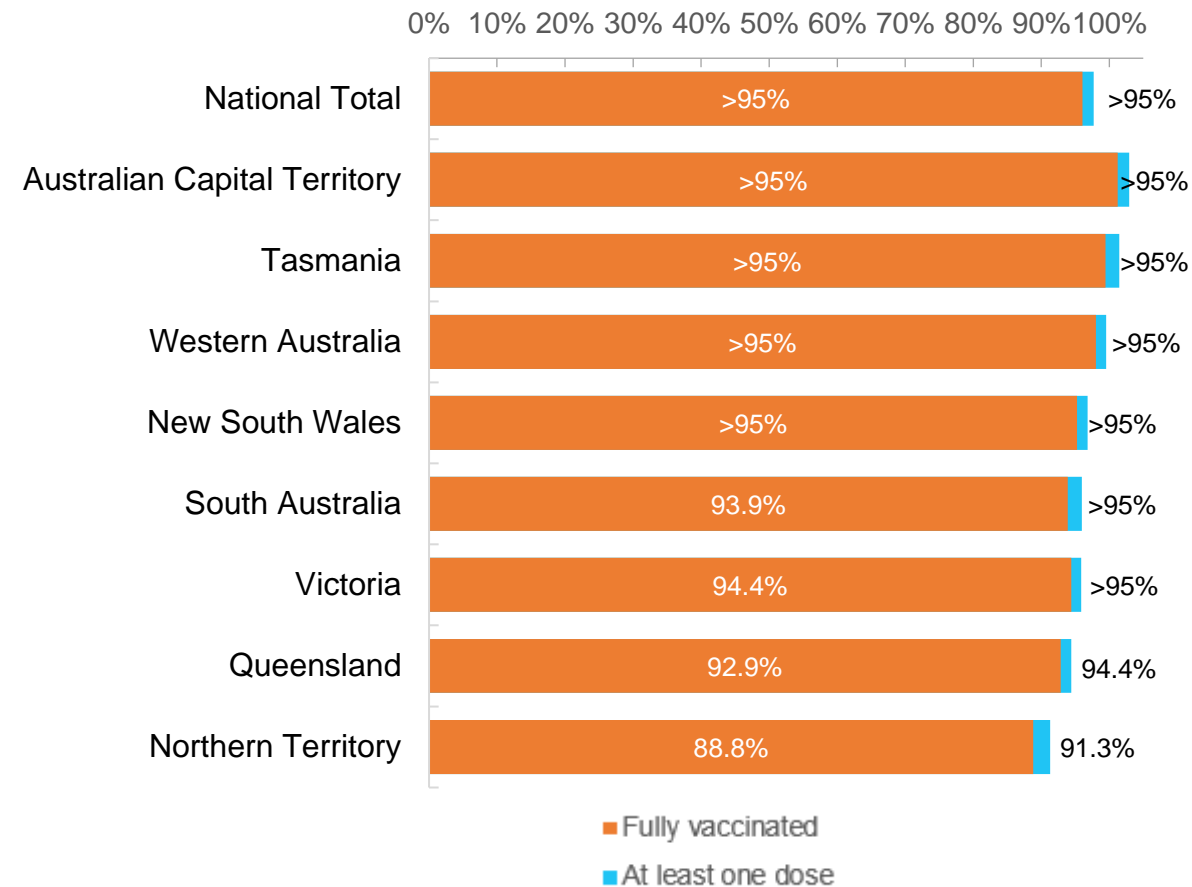
Australia's COVID-19
Vaccine Roadmap

Cumulative total doses administered vs eligible state populations*



*Not an indication of percentage vaccinated, numbers will exceed 100 due to multiple doses required per person of the population.
All doses are included for those aged 12 and above, and are based on vaccination provider location.

First and Second Doses by residential location



Aboriginal and Torres Strait Islander peoples

Number of people vaccinated

Data as at:
19 Jul 2022
Updated weekly

Australia's COVID-19
Vaccine Roadmap



444,934

people over the age of 16
have had at least one dose

85.0%

of people over the age of 16
have had at least one dose



426,725

people over the age of 16
are fully vaccinated

81.6%

of people over the age of 16 are
fully vaccinated



People aged 12 – 15 years

47,690

41,787

67.6%

At least one dose

59.2%

Fully vaccinated

178 Aboriginal community controlled health services (ACCHS)

0#

50

27

44

12

3

21

21

ACT

NSW

NT

QLD

SA

TAS

VIC

WA

Medicare Address State ^{##}	Individuals Dose 1	Individuals Dose 1 %	Individuals Dose 2	Individuals Dose 2 %
Australian Capital Territory	4,805	91.9%	4,685	89.6%
New South Wales	136,562	87.3%	133,513	85.4%
Northern Territory	41,236	89.8%	39,300	85.6%
Queensland	116,939	81.9%	111,619	78.2%
South Australia	20,124	80.7%	18,750	75.2%
Tasmania	13,922	88.9%	13,524	86.3%
Victoria	35,819	90.5%	35,026	88.5%
Western Australia	53,853	86.8%	50,274	81.0%
Unknown/Other Territories	21,674	70.6%	20,034	65.3%
Totals	444,934	85.0%	426,725	81.6%

Source: Australian Immunisation Register

*Identifying as Aboriginal and Torres Strait Islander is optional and the estimated population may be under reported.

**Includes all Aboriginal and Torres Strait Islander peoples who have received a vaccination, not limited to those administered in an ACCHS setting

#ACCHS in the ACT are currently operating as a Commonwealth Vaccine Clinics so not included to avoid double counting

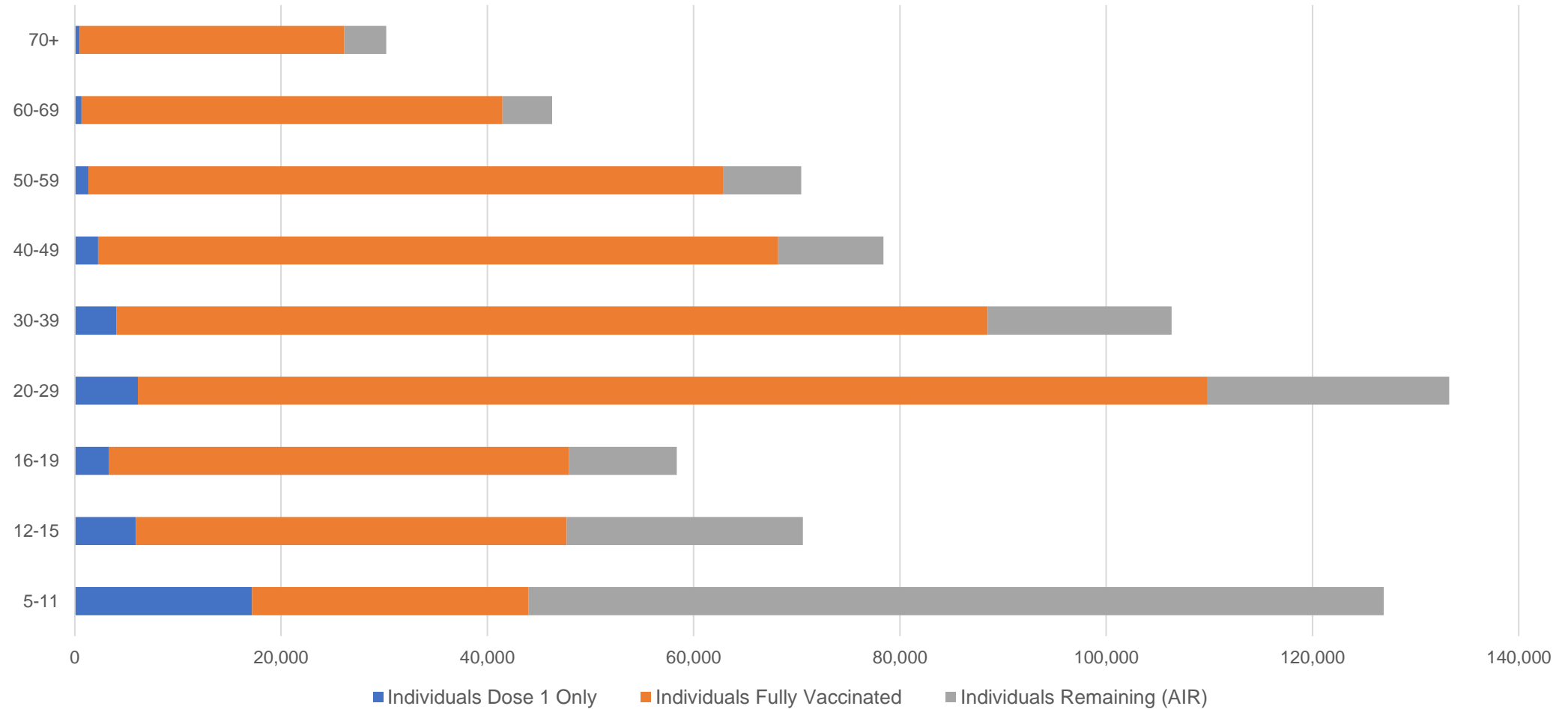
##The above table includes all identified Aboriginal and Torres Strait Islander people who are aged 16 and above by their state of residence.

Aboriginal and Torres Strait Islander peoples

Number of people vaccinated by age

Data as at:
19 Jul 2022
Updated weekly

Australia's COVID-19
Vaccine Roadmap



Source: Australian Immunisation Register

Commonwealth primary care

Data as at:
23 Jul 2022

Australia's COVID-19
Vaccine Roadmap



Primary care vaccine administration sites

5,691	123	178	3,617
GPs	CVCs	ACCHS	Pharmacies



39,048,458 total vaccine doses administered
primary care settings as at 23 July
+ 36,518 recorded in the last 24 hours

Primary care vaccinations by provider type

	Doses administered	Daily increase	7 day increase
General Practice* includes other Commonwealth	30,829,889	18,555	279,028
Pharmacy	8,218,569	17,963	253,226

NSW
13,454,196
(+12,298 daily increase)

VIC
9,675,474
(+9,358 daily increase)

QLD
7,556,477
(+6,626 daily increase)

WA
4,072,723
(+3,115 daily increase)

TAS
747,021
(+524 daily increase)

SA
2,364,898
(+2,315 daily increase)

ACT
625,283
(+1,008 daily increase)

NT
228,027
(+42 daily increase)

324,359

doses administered to persons
residing in other territories or with
missing residential information

*General practice includes Commonwealth Vaccination Clinics, Aboriginal Community Health Centres, Royal Flying Doctor Service and other Commonwealth vaccination facilities

Source: Australian Immunisation Register

Data as at:
23 Jul 2022

Commonwealth aged care and disability doses administered



1,324,361 (+ 82 last 24 hours)

Total vaccine doses administered in aged care and disability facilities as at 23 July

Number of doses administered as part of the Commonwealth aged and disability care rollout

NSW
572,909
(**<10** daily
increase)

VIC
248,509
(**<10** daily
increase)

QLD
211,052
(**<10** daily
increase)

WA
113,293
(**<10** daily
increase)

TAS
23,685
(**<10** daily
increase)

SA
86,569
(**<10** daily
increase)

ACT
17,952
(**<10** daily
increase)

NT
7,691
(**<10** daily
increase)

42,701

doses administered to persons
residing in other territories or with
missing residential information

*Sourced from the Australian Immunisation Register. Includes all persons vaccinated at participating residential aged care, disability and related industry settings.

**State level breakdown indicates the residential location and may not align to the state in which the vaccination occurred.

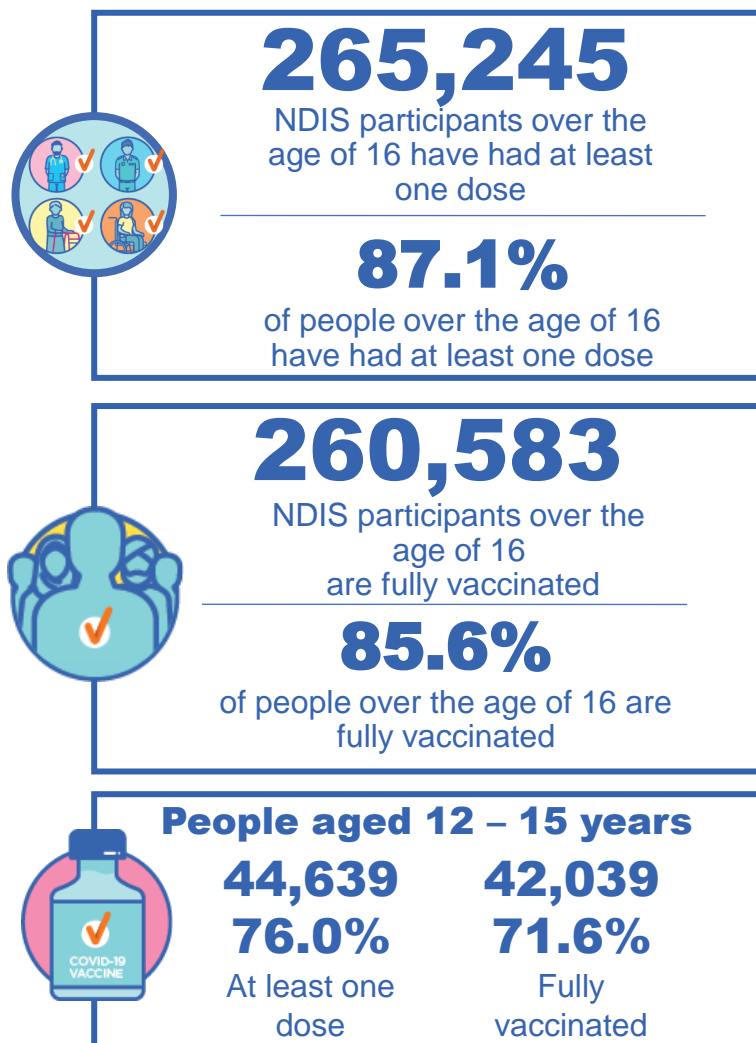
Source: Australian Immunisation Register

National Disability Insurance Scheme (NDIS) reported vaccinations

Data as at:
21 July 2022
Updated weekly

Australia's COVID-19
Vaccine Roadmap

NDIS participant vaccinations



	People aged 16+ with at least one dose	People aged 16+ fully vaccinated	% People aged 16+ with at least one dose	% People aged 16+ fully vaccinated
ACT	4,975	4,912	89.1%	87.9%
NSW	81,063	79,802	87.6%	86.2%
NT	2,301	2,231	77.8%	75.4%
QLD	52,719	51,727	85.3%	83.7%
SA	21,776	21,280	84.9%	83.0%
TAS	6,629	6,478	87.4%	85.4%
VIC	70,423	69,282	88.3%	86.8%
WA	25,359	24,871	88.4%	86.7%
National	265,245	260,583	87.1%	85.6%

Source: Linkage between National Disability Insurance Agency data and the Australian Immunisation Register. Total NDIS participant numbers as at 30 June. Australian Immunisation Register data as at 20 July. Includes all participants regardless of residence type.

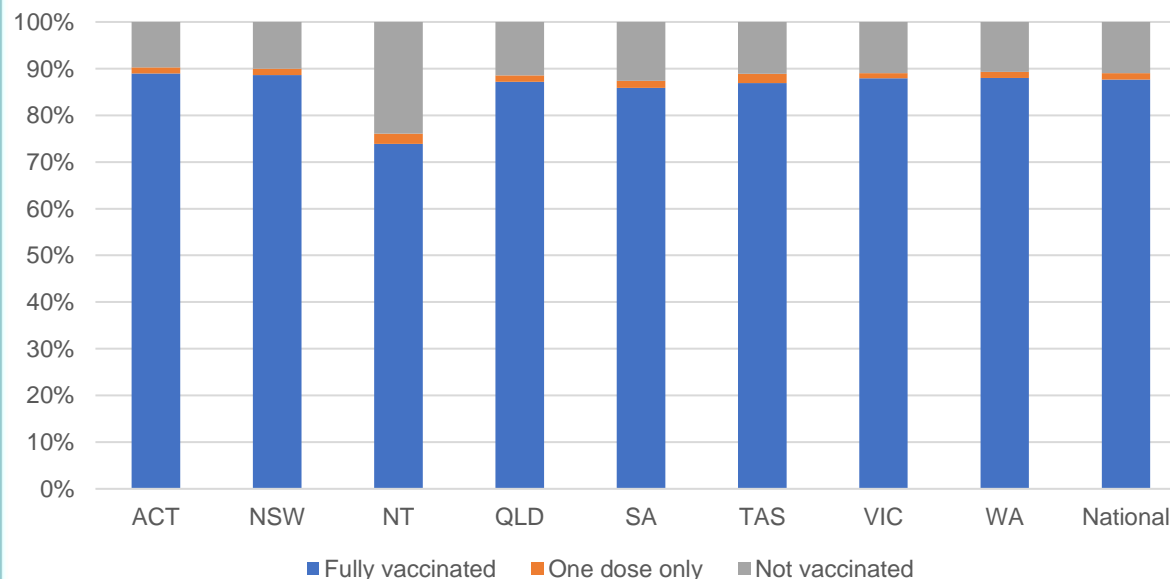
National Disability Insurance Scheme (NDIS) reported vaccinations

Data as at:
21 July 2022
Updated weekly

Australia's COVID-19
Vaccine Roadmap

NATIONAL	Total people with at least one dose	People fully vaccinated	Total number of individuals in cohort	% People with at least one dose	% People fully vaccinated
NDIS participants living in disability accommodation	21,222	20,901	23,858	89.0%	87.6%

NDIS participants in disability and aged care accommodation



Source: Linkage between National Disability Insurance Agency data and the Australian Immunisation Register. Includes participants residing in disability accommodation only.

Source: Total NDIS participant numbers as at 30 June. Participant data as at 19 July. Australian Immunisation Register data as at 20 July. Worker data as at 21 July.

NDIS workforce vaccinations

	NDIS workers with at least one dose	NDIS workers fully vaccinated	% NDIS workers with at least one dose	% NDIS workers fully vaccinated
NSW	128,331	123,529	98.4%	94.7%
VIC	117,364	114,279	97.8%	95.2%
QLD	71,454	70,608	97.9%	96.8%
WA	34,486	33,118	98.9%	95.0%
SA	35,781	34,094	98.6%	93.9%
TAS	12,423	12,039	98.5%	95.5%
ACT	12,337	12,310	99.8%	99.6%
NT	3,965	3,817	99.6%	95.9%
TOTAL	416,141	403,794	98.3%	95.3%

Source: the NDIS Commission has established a requirement for registered NDIS providers who provide intensive disability support services to report on the vaccination status of workers they employ, or otherwise engage, to deliver NDIS-funded supports and services, and who are required to be vaccinated in accordance with in-force state and territory public health orders. The statistics reflect data reported to the NDIS Commission by registered NDIS providers and should be considered indicative and subject to change

Note: Some registered NDIS providers are yet to report on the vaccination status of their workforce. The NDIS Commission is working with those providers around reporting requirements.

Remaining workers not included include those exempt from vaccination requirements, workers whose vaccination status is not yet verified by the provider (such as workers on leave) and provider reporting anomalies.

Residential aged care vaccination rollout

Residential aged care facilities status

175,877

People fully vaccinated

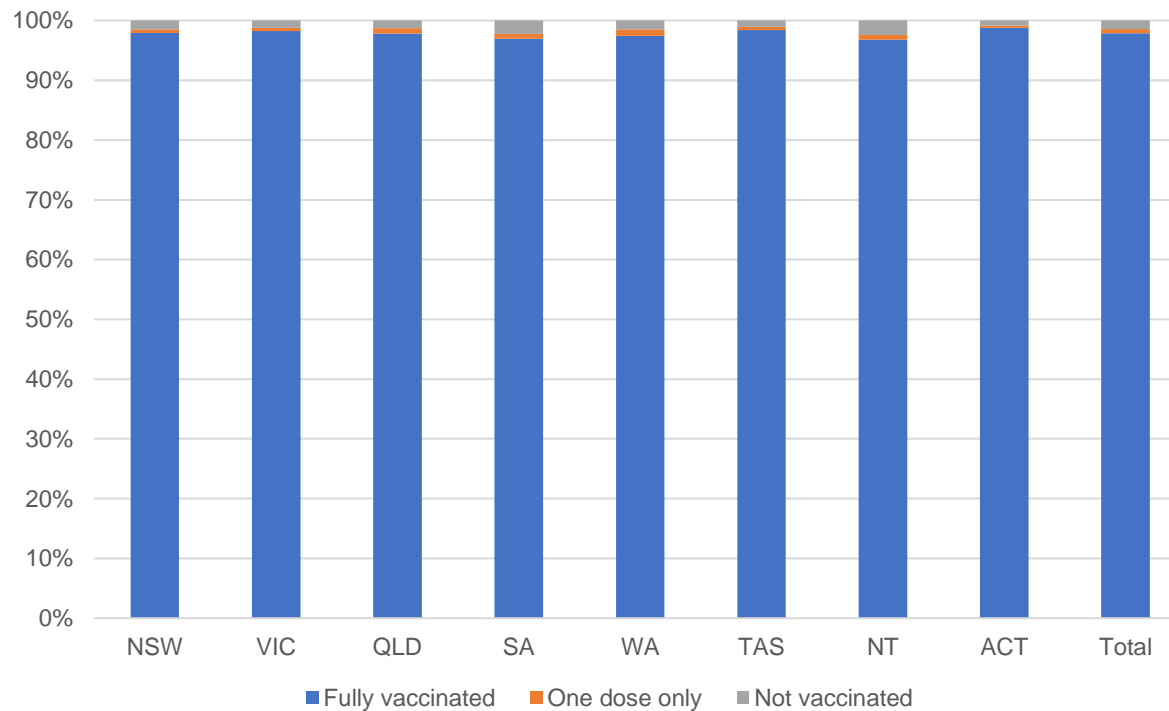
177,118

People with at least one dose

Australia's COVID-19 Vaccine Roadmap

Data as at:
21 July 2022
Updated weekly

Aged care resident vaccinations



Aged care worker vaccinations

Jurisdictions	Total workers with at least one dose	Workers fully vaccinated	% Workers with at least one dose	% Workers fully vaccinated
NSW	77,201	77,077	99.9%	99.7%
VIC	70,754	70,754	100.0%	100.0%
QLD	48,927	48,915	100.0%	100.0%
SA	26,708	26,698	100.0%	100.0%
WA	24,883	24,878	100.0%	100.0%
TAS	7,538	7,538	100.0%	100.0%
NT	918	918	100.0%	100.0%
ACT	2,951	2,951	100.0%	100.0%
Total	259,880	259,729	100.0%	99.9%

Source: Residential aged care provider self-reported COVID-19 vaccination information

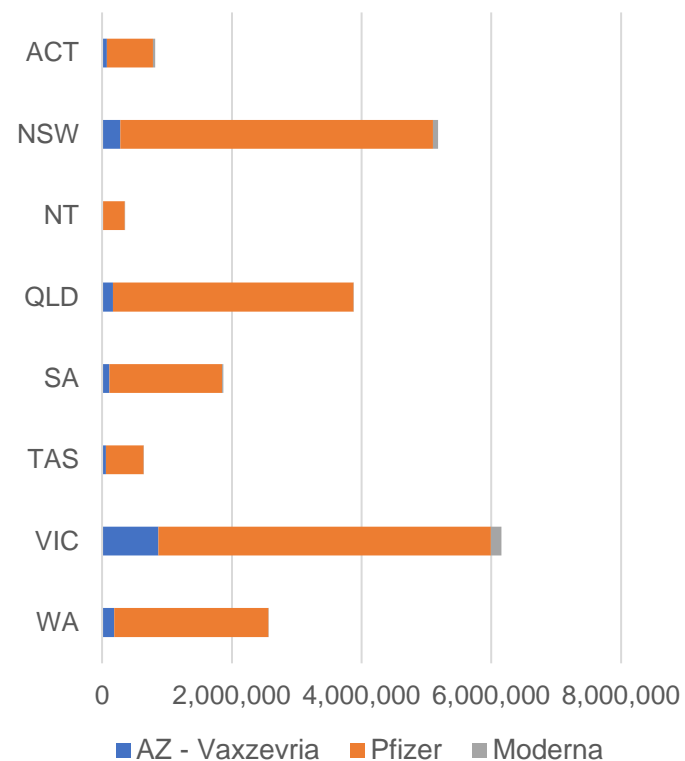
*Status updates are provided by facilities at least once per week. Reporting is updated Monday to Friday to encompass different facility updates being made on different days.

Data is sourced directly from Aged Care Service Providers and is not drawn or closely aligned with data from AIR due to inconsistencies and potential lags in uploading of records.

Data as at:
23 Jul 2022

Jurisdiction administered

Total vaccine doses administered in State and Territory clinics as at 23 July



21,465,520 total vaccine doses administered
in State and Territory clinics as at 23 July
+ **7,252** recorded in the last 24 hours
+ **69,228** recorded in the last 7 days

NSW
5,178,878
(+2,314 daily
increase)

VIC
6,165,192
(+1,418 daily
increase)

QLD
3,876,884
(+227 daily
increase)

WA
2,566,412
(+1,657 daily
increase)

TAS
638,358
(+742 daily
increase)

SA
1,871,413
(+670 daily
increase)

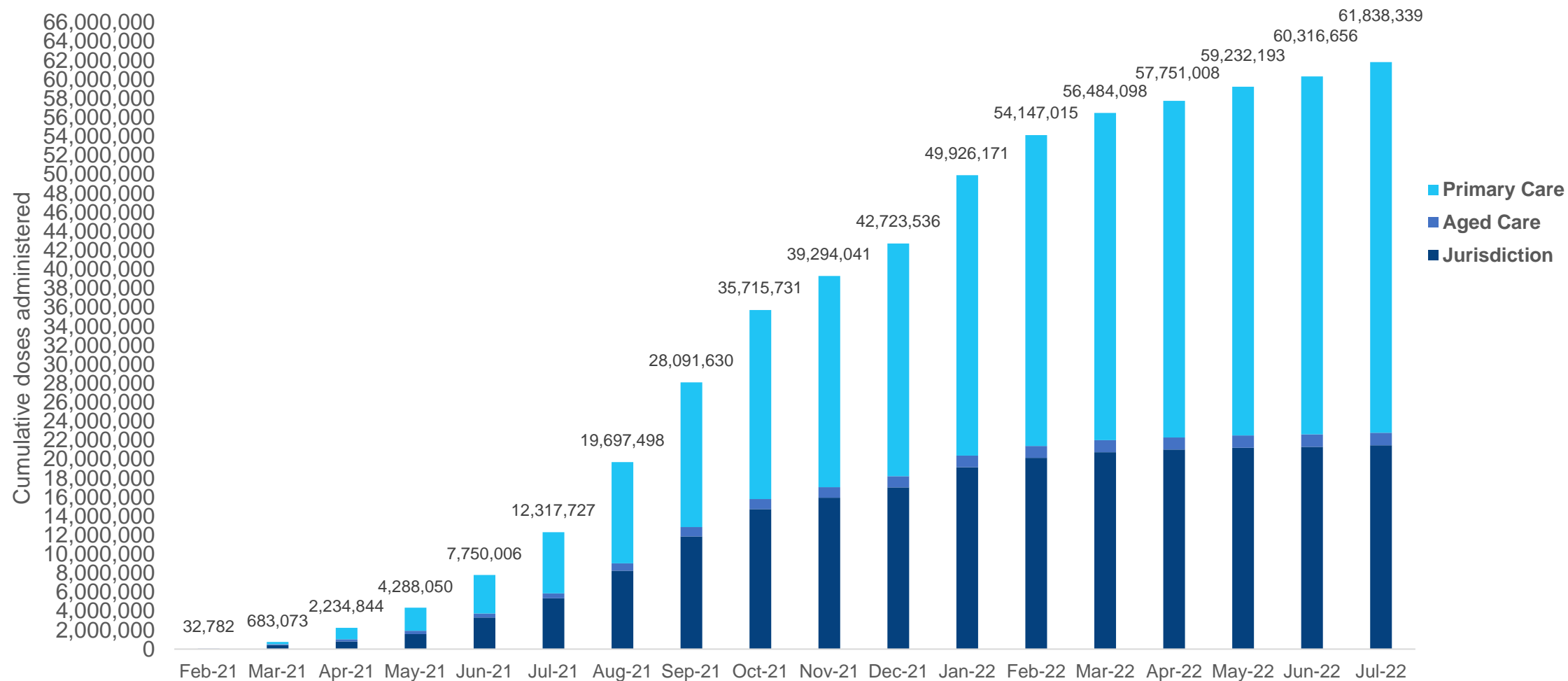
ACT
819,814
(+224 daily
increase)

NT
348,569
(**<10** daily
increase)

*Sourced from the Australian Immunisation Register. Numbers are calculated as difference in daily cumulative reported numbers to allow for historical corrections.

Cumulative doses administered by channel

Data as at:
23 Jul 2022

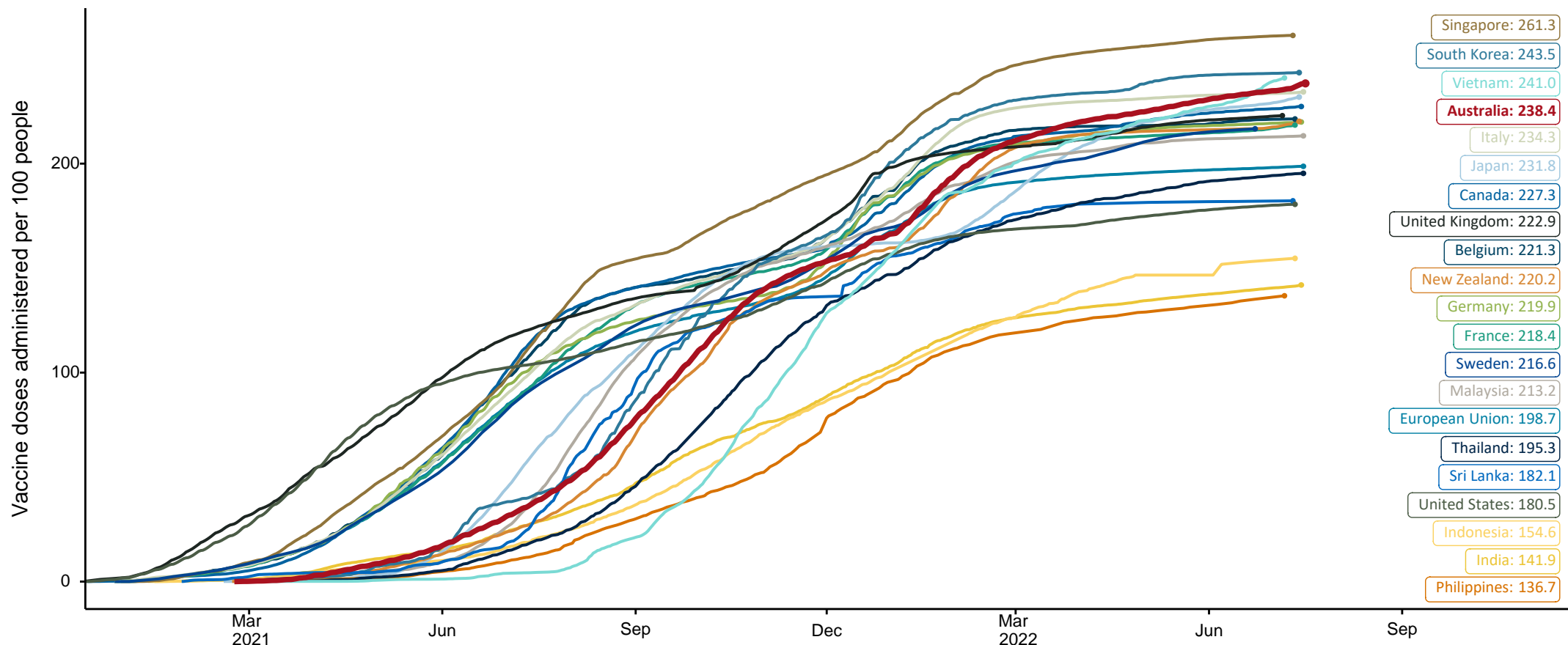


Source: Australian Immunisation Register

COVID-19 vaccine doses per 100, Australia and select countries

Data as at:
17 July 2022
Updated weekly

Australia's COVID-19
Vaccine Roadmap



Note: From 11 January 2022, data for Australia includes all doses administered to people 5 and over. Prior to 11 January, data was for 12 and over.

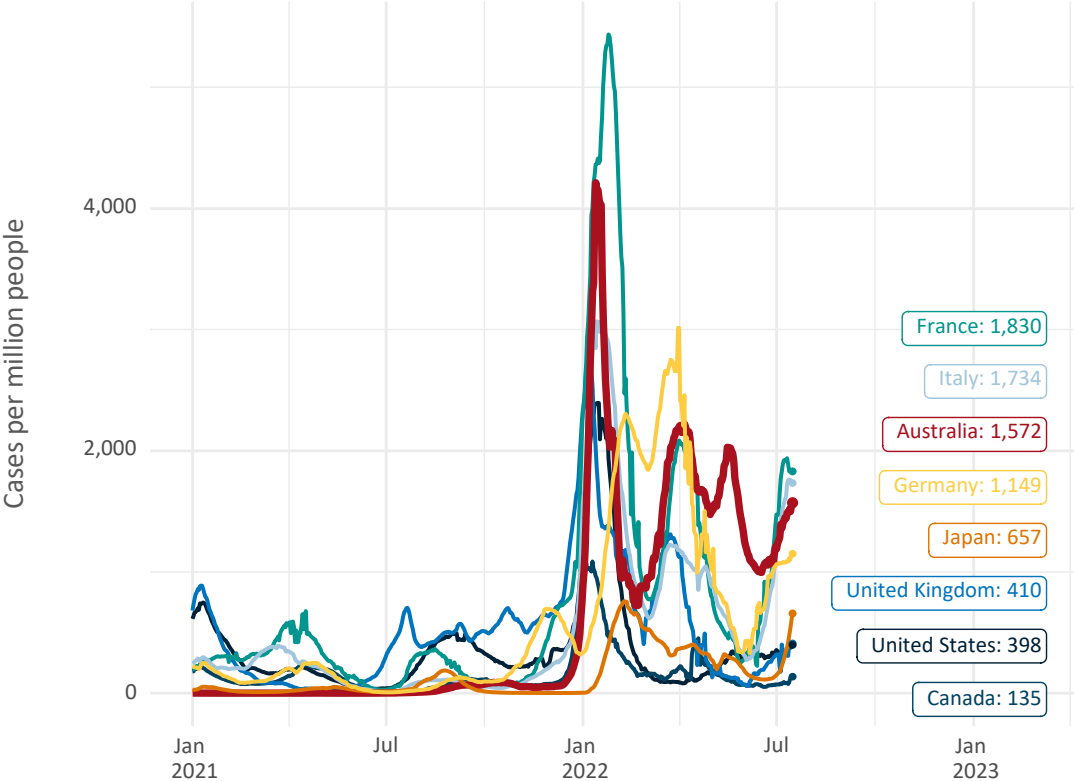
Source: Department of Health (Australia), Our World in Data (international)

Latest data: 17 July

International data – COVID-19

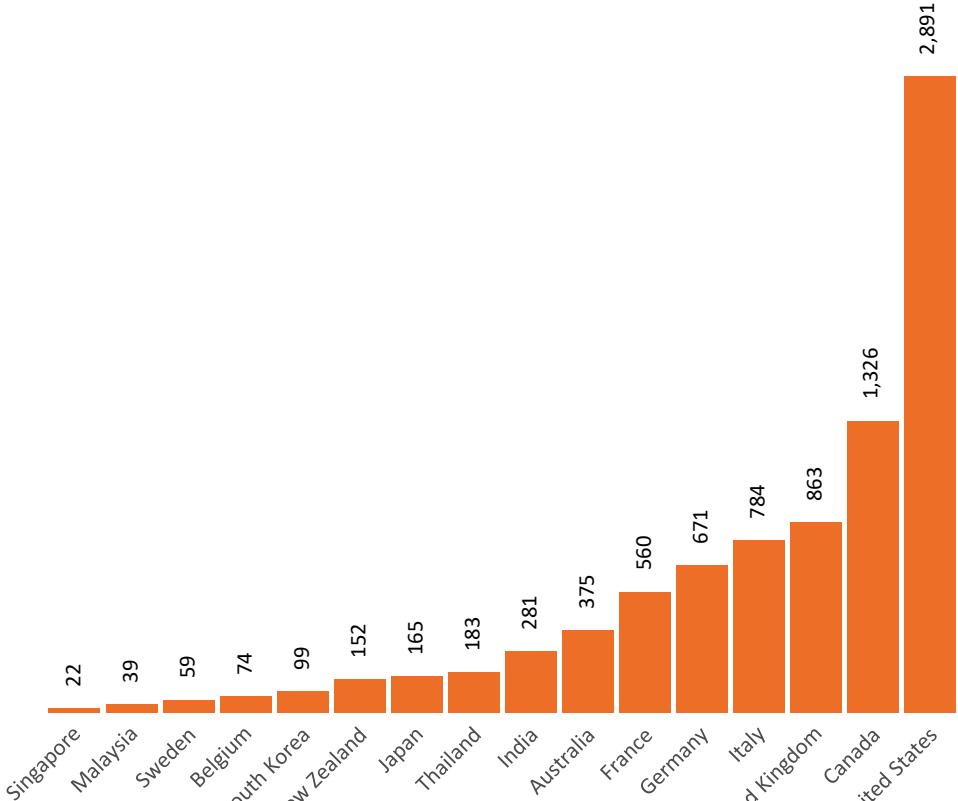
Data as at:
17 July 2022
Updated weekly

New daily cases per million since 2021, Australia and G7 countries
Smoothed - 7 day average



Source: OWID
Data downloaded: 18 Jul 2022 09:22
Latest data: 16 Jul 2022

COVID-19 deaths in past 7 days - Australia and select countries



Source: OWID
Data downloaded: 18 Jul 2022 09:22
Latest data: 16 Jul 2022