



**Australian Government**  
**Operation COVID Shield**

# COVID-19 Vaccine Roll-out

23 July 2022

Data as at:  
22 Jul 2022

## Total vaccine doses



**61,794,487** total vaccine  
doses administered nationally as at 22 July  
**+106,743** recorded in the last 24 hours



**20,147,594**

people have had at least one  
dose

**>95%**

of people over the age of 16  
have had at least one dose



**19,806,638**

people are fully vaccinated

**>95%**

of people over the age of 16 are  
fully vaccinated



**14,043,990**

people over the age of 16  
who have received three or  
more doses

**NSW**  
**19,192,900**  
(+35,454 daily  
increase)

**VIC**  
**16,162,824**  
(+26,270 daily  
increase)

**QLD**  
**11,717,092**  
(+22,203 daily  
increase)

**WA**  
**6,775,842**  
(+9,504 daily  
increase)

**TAS**  
**1,404,887**  
(+2,352 daily  
increase)

**SA**  
**4,314,880**  
(+7,817 daily  
increase)

**ACT**  
**1,622,586**  
(+2,944 daily  
increase)

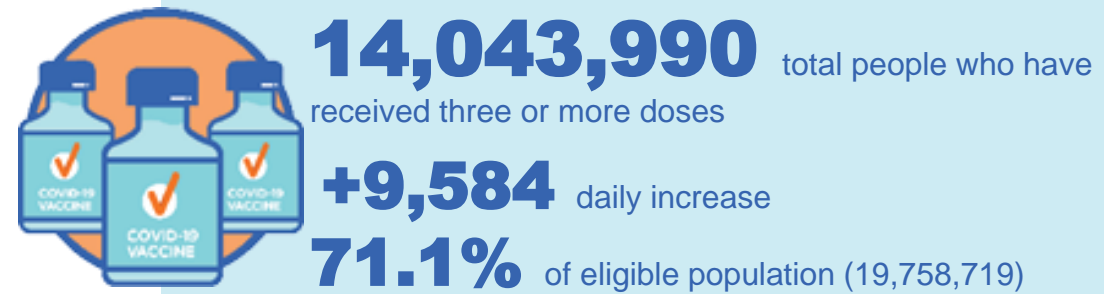
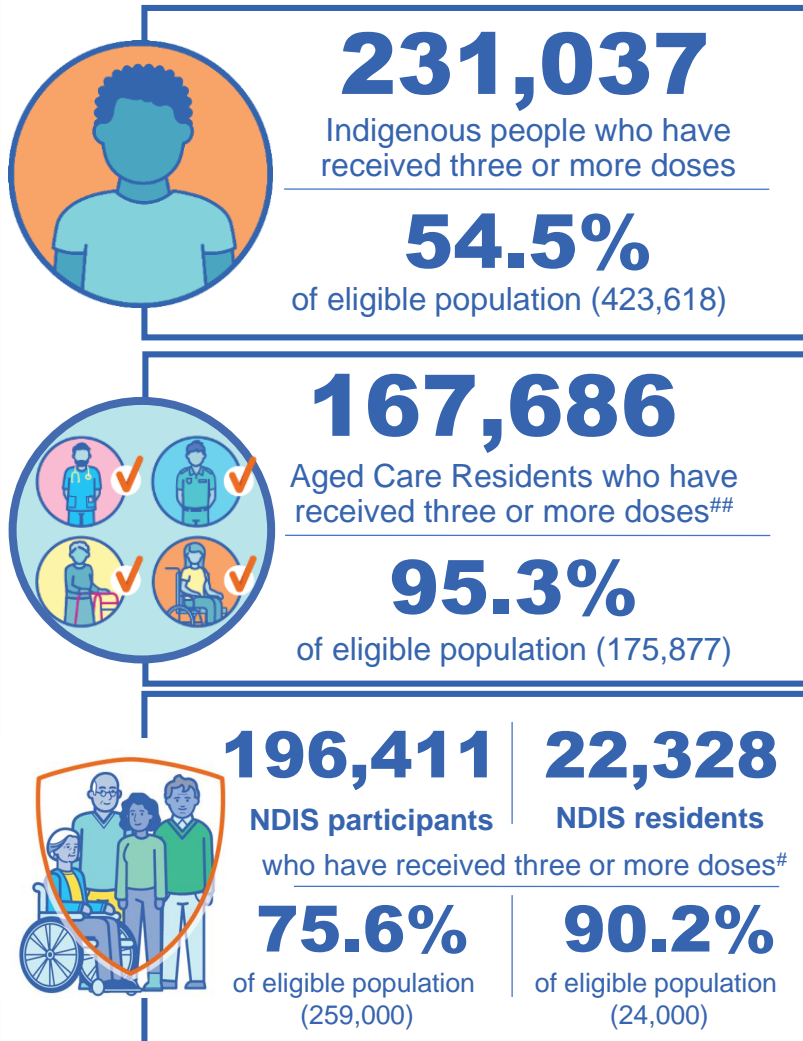
**NT**  
**603,476**  
(+199 daily  
increase)

\*Administration state breakdown indicates state in which a vaccine was administered

\*\*Overall dose count includes instances of more than three doses per person in a small number of cases.

Source: Australian Immunisation Register

## Booster Vaccinations



Data as at:  
22 Jul 2022

	Number of People	Daily Increase	% of Eligible
NSW	4,293,538	3,288	68.8%
VIC	3,736,377	2,168	73.3%
QLD	2,440,680	2,297	64.1%
WA	1,713,671	547	82.9%
SA	1,008,294	824	74.8%
TAS	321,166	219	73.6%
ACT	276,525	131	79.5%
NT	132,182	<10	78.4%

\*People may belong to multiple groups and could be represented in the above breakdowns multiple times.  
# NDIS participants data as at 19 July 2022. ## Aged Care Residents data as at 22 July 2022.

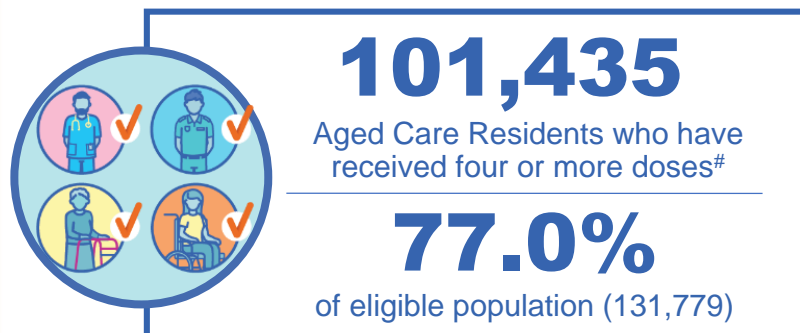
Source: Australian Immunisation Register

**121,557** doses administered to persons residing in other territories or with missing residential information

## Fourth Doses

Data as at:  
22 Jul 2022

Australia's COVID-19  
Vaccine Roadmap



**3,592,193**

total people (16+) who have received four doses

**91,452**

daily increase (16+)

**31.2%**

of eligible population (30+) (11,441,698)

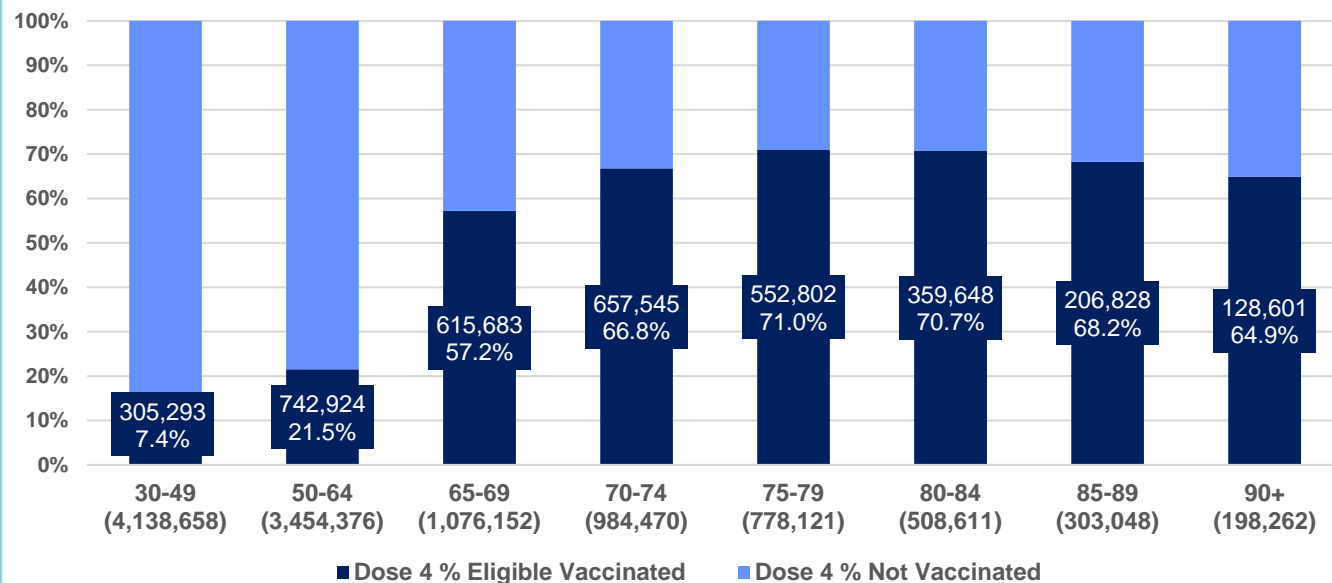
**2,521,107**

total people (65+) who have received four doses

**65.5%**

of eligible population (65+) (3,848,664)

% Individuals eligible vaccinated by current age



	Number of People 16+	Daily Increase
ACT	69,967	1,996
NSW	1,154,981	30,004
NT	15,661	180
QLD	706,410	18,637
SA	289,461	6,720
TAS	96,721	1,962
VIC	880,960	22,970
WA	360,571	8,530

**17,461**

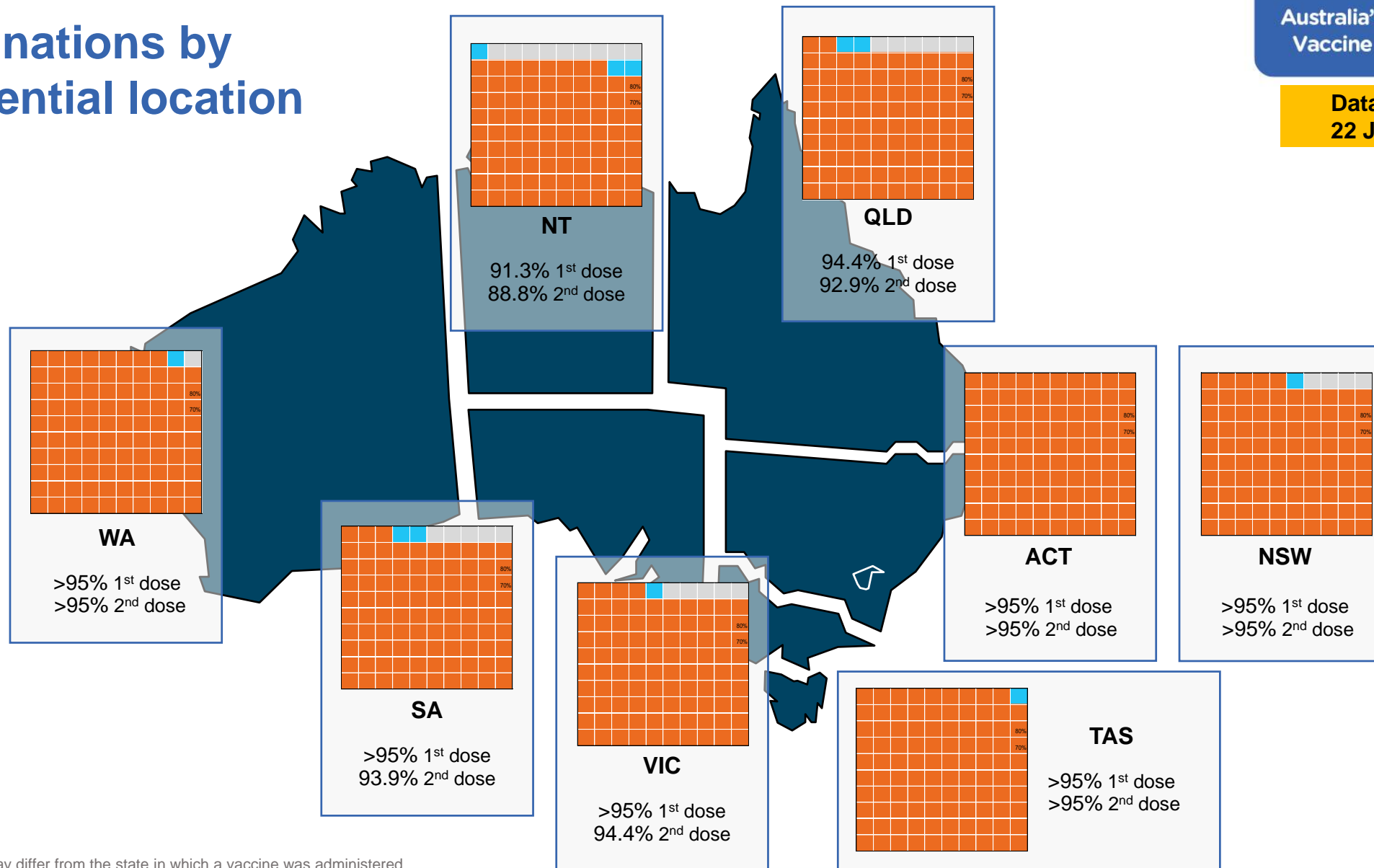
doses administered to persons  
residing in other territories or with  
missing residential information

\*People become eligible for a fourth dose three months after their third dose. Individuals may belong to multiple groups and could be represented in the above multiple times.  
#Aged Care Residents data as at 21 July 2022.

Source: Australian Immunisation Register

# Vaccinations by residential location

Data as at:  
22 Jul 2022



\*Residential state may differ from the state in which a vaccine was administered

# Commonwealth and Jurisdiction vaccine doses administered

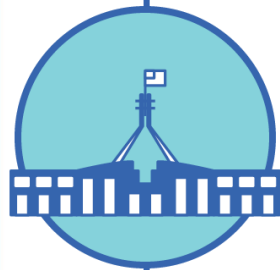
Data as at:  
22 Jul 2022



**61,794,487** total vaccine  
doses administered nationally as at 22 July  
**+ 106,743** recorded in the last 24 hours



**21,458,268**  
doses administered by state  
and territory facilities  
**+ 10,726**  
recorded in the last 24 hours



**40,336,219**  
doses administered by  
commonwealth facilities  
**+ 96,017**  
recorded in the last 24 hours

**39,011,940** total vaccine doses  
administered in primary care settings  
**1,324,279** total vaccine doses  
administered in aged care and disability  
settings

NSW	Jurisdictions	Commonwealth
Cumulative	5,176,564	14,016,336
Daily increase	2,468	32,986

VIC	Jurisdictions	Commonwealth
Cumulative	6,163,774	9,999,050
Daily increase	2,537	23,733

QLD	Jurisdictions	Commonwealth
Cumulative	3,876,657	7,840,435
Daily increase	1,076	21,127

WA	Jurisdictions	Commonwealth
Cumulative	2,564,755	4,211,087
Daily increase	2,066	7,438

TAS	Jurisdictions	Commonwealth
Cumulative	637,616	767,271
Daily increase	556	1,796

SA	Jurisdictions	Commonwealth
Cumulative	1,870,743	2,444,137
Daily increase	1,393	6,424

ACT	Jurisdictions	Commonwealth
Cumulative	819,590	802,996
Daily increase	575	2,369

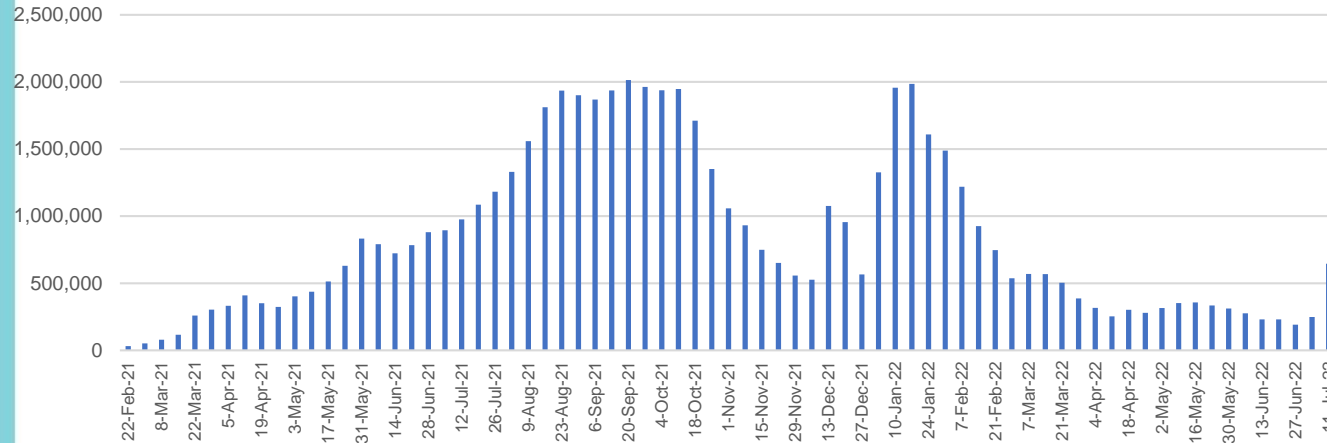
NT	Jurisdictions	Commonwealth
Cumulative	348,569	254,907
Daily increase	55	144

# Vaccine milestone charts

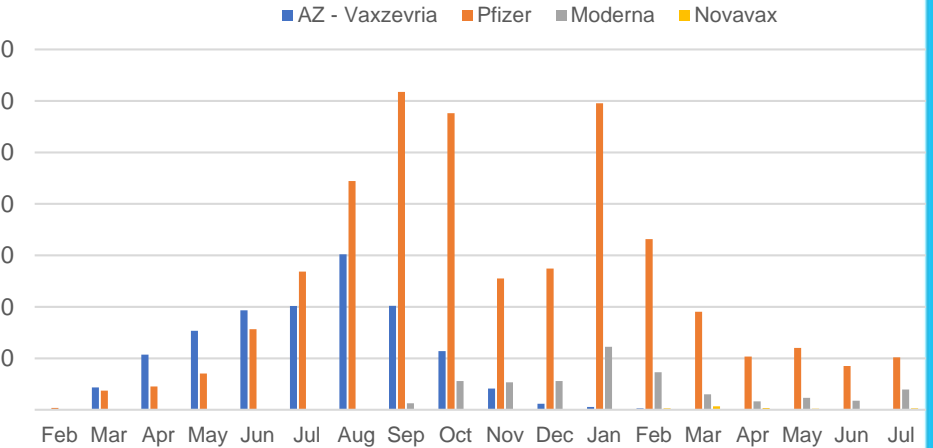
Data as at:  
22 Jul 2022

Australia's COVID-19  
Vaccine Roadmap

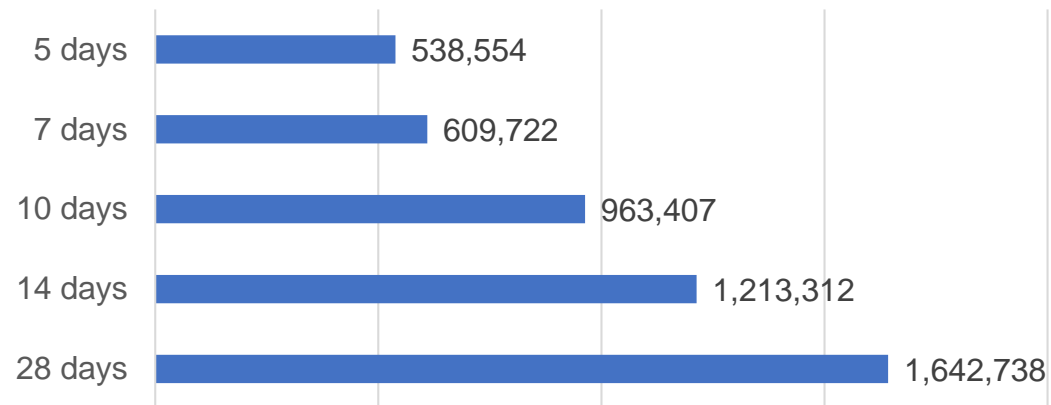
### Doses Administered by Week



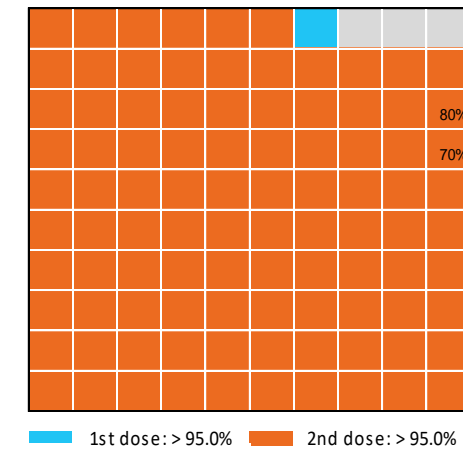
### Doses by administration month and vaccine type



### Doses Reported



### Eligible population percentage coverage



\*Each square represents 1% of the national population.  
Squares are filled as milestones are achieved.

\*Sourced from the Australian Immunisation Register.

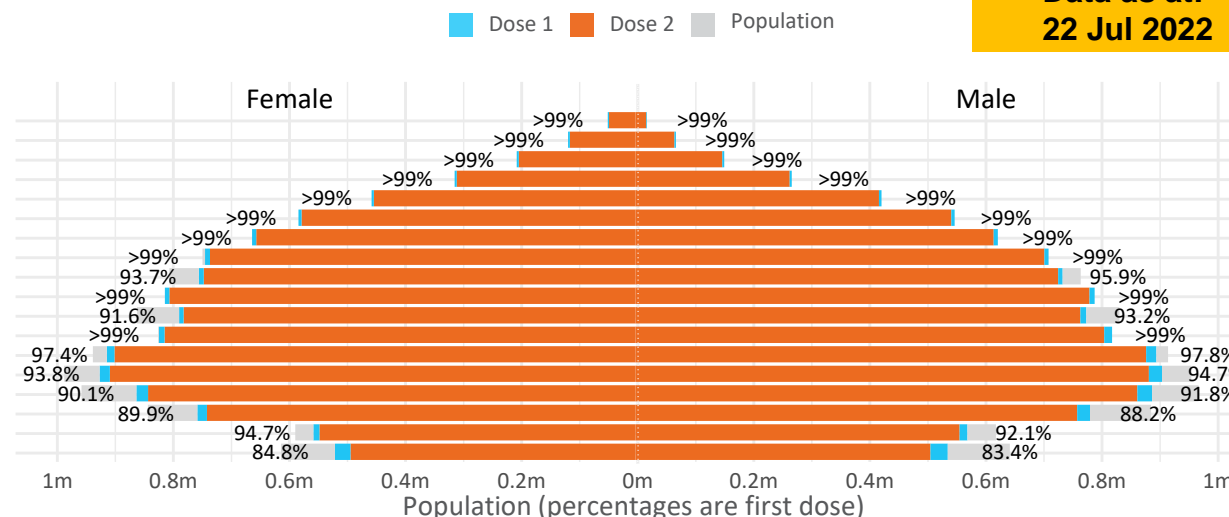
# Doses by age and sex

First and second doses by age and sex

Australia's COVID-19  
Vaccine Roadmap

Data as at:  
22 Jul 2022

Age	Dose 1	Dose 2
95+	67,152 (>99%)	63,654 (>99%)
90-94	184,334 (>99%)	178,832 (>99%)
85-89	354,390 (>99%)	347,619 (>99%)
80-84	575,789 (>99%)	568,589 (>99%)
75-79	871,412 (>99%)	862,754 (>99%)
70-74	1,121,565 (>99%)	1,109,803 (>99%)
65-69	1,275,095 (>99%)	1,259,697 (>99%)
60-64	1,442,057 (>99%)	1,425,063 (>99%)
55-59	1,476,139 (94.9%)	1,459,134 (93.8%)
50-54	1,588,636 (>99%)	1,571,494 (>99%)
45-49	1,550,346 (92.5%)	1,531,846 (91.4%)
40-44	1,630,032 (>99%)	1,605,905 (>99%)
35-39	1,796,749 (97.9%)	1,764,264 (96.1%)
30-34	1,821,974 (94.7%)	1,779,570 (92.5%)
25-29	1,744,380 (91.5%)	1,696,027 (89.0%)
20-24	1,530,298 (89.4%)	1,489,354 (87.0%)
16-19	1,117,246 (93.4%)	1,093,033 (91.4%)
12-15	1,046,542 (84.1%)	990,239 (79.6%)



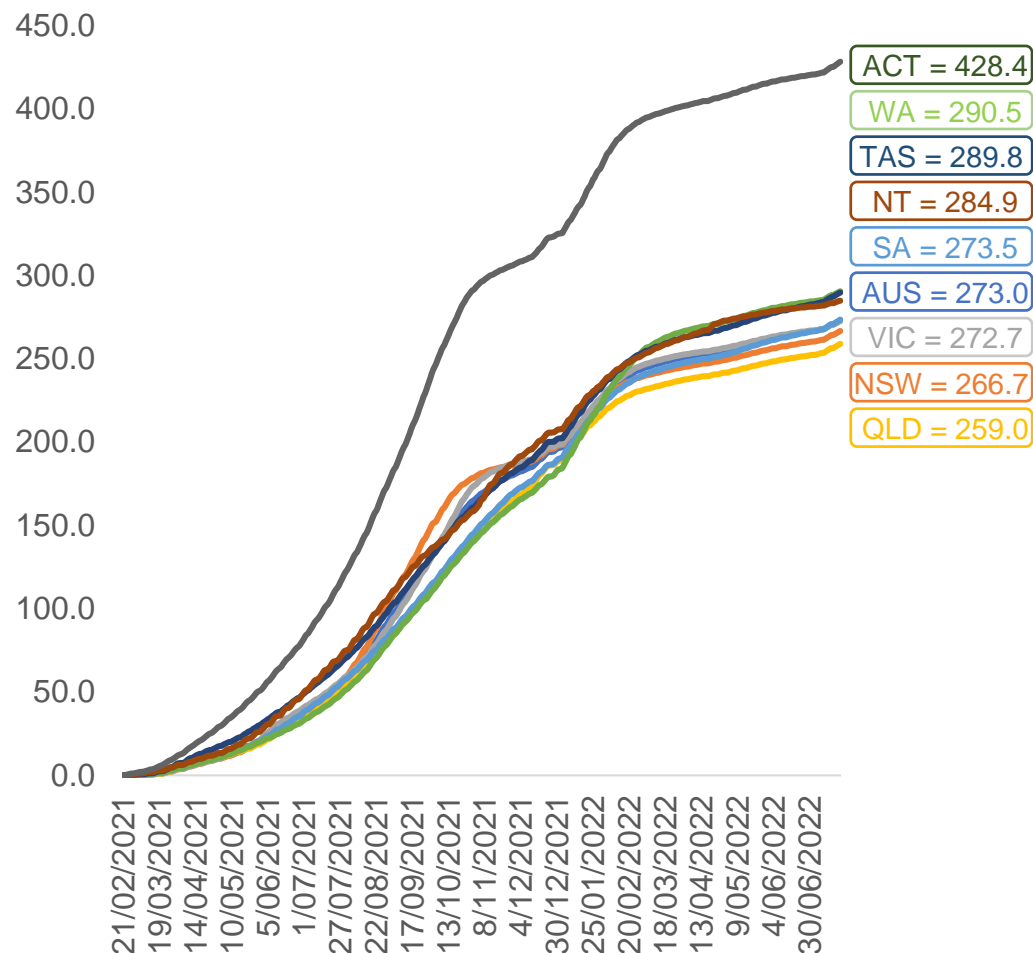
	AUS	ACT	NSW	NT	QLD	SA	TAS	VIC	WA
16 and over - dose 1	20,147,594	353,982	6,354,371	174,003	3,882,865	1,381,996	446,670	5,184,140	2,104,765
16 and over - dose 2	19,806,638	348,156	6,254,152	169,309	3,818,681	1,352,559	437,651	5,104,321	2,073,388
16 and over - population	20,619,959*	344,037	6,565,651	190,571	4,112,707	1,440,400	440,172	5,407,574	2,114,978
16 and over % with dose 1	97.71%	>99%	96.78%	91.31%	94.41%	95.95%	>99%	95.87%	>99%
16 and over % with dose 2	96.06%	>99%	95.26%	88.84%	92.85%	93.90%	>99%	94.39%	98.03%
5 to 11 - dose 1	1,190,350	31,719	356,606	13,094	205,982	83,436	28,358	324,058	139,617
5 to 11 - dose 2	920,196	27,688	283,278	8,858	152,846	65,131	23,344	250,369	104,061
5 to 11 - population	2,276,638	39,789	716,460	24,750	478,731	148,816	45,033	578,499	244,154
5 to 11 % with dose 1	52.29%	79.72%	49.77%	52.91%	43.03%	56.07%	62.97%	56.02%	57.18%
5 to 11 % with dose 2	40.42%	69.59%	39.54%	35.79%	31.93%	43.77%	51.84%	43.28%	42.62%
12 to 15 - dose 1	1,046,542	20,149	322,077	10,699	204,952	68,061	22,757	273,434	115,333
12 to 15 - dose 2	990,239	19,597	307,765	9,628	191,262	64,310	21,636	261,453	106,727
12 to 15 - population	1,243,990	19,693	390,330	13,060	270,146	82,747	26,308	308,611	132,869
12 to 15 % with dose 1	84.13%	>99%	82.51%	81.92%	75.87%	82.25%	86.50%	88.60%	86.80%
12 to 15 % with dose 2	79.60%	>99%	78.85%	73.72%	70.80%	77.72%	82.24%	84.72%	80.32%

\*National population will not equal sum of listed jurisdictions due to a small number of people counted in national population residing in some 'other' territories. Sum of state doses will not add to national total as some records are unable to be geocoded to a State or Territory.  
Doses sourced from Australian Immunisation Register, population from ABS ERP June 2020



# Vaccinations by location

Cumulative total doses administered vs eligible state populations\*

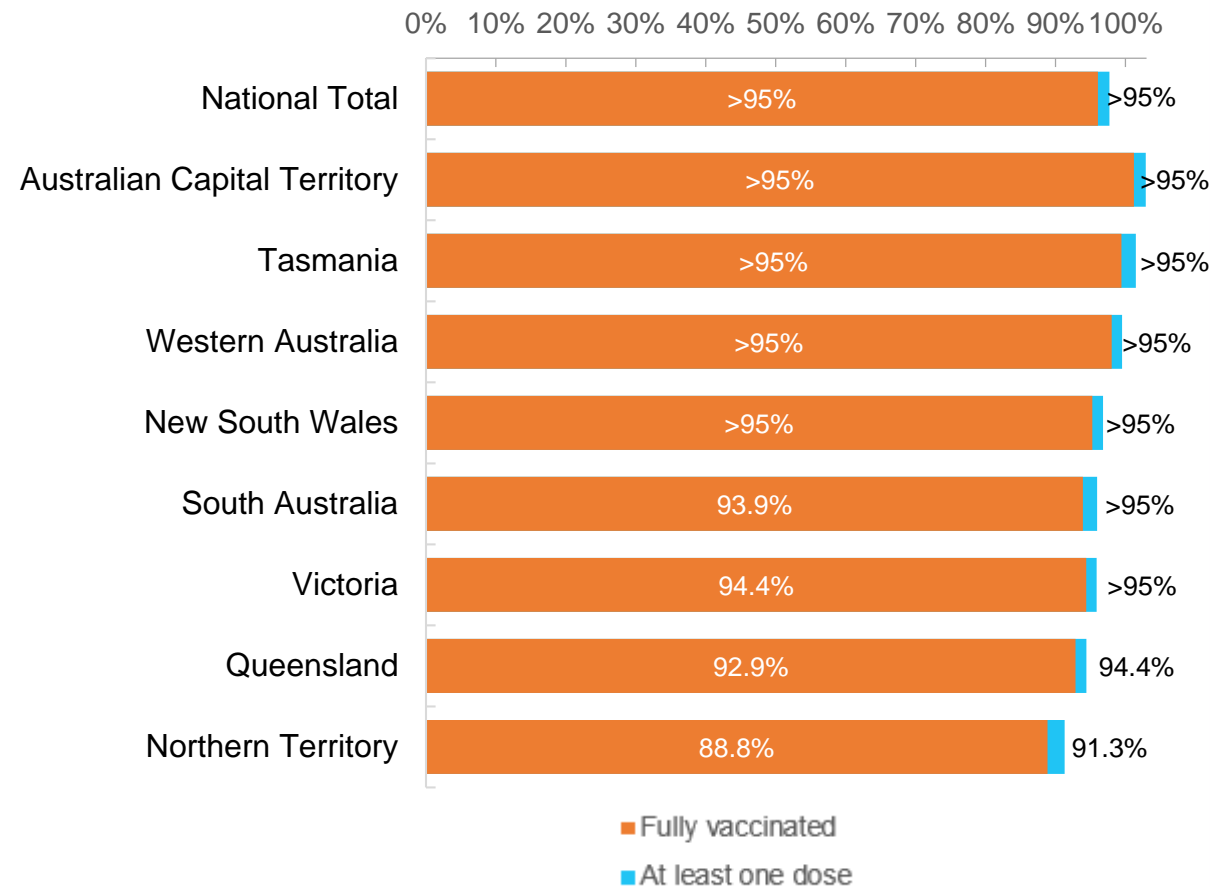


\*Not an indication of percentage vaccinated, numbers will exceed 100 due to multiple doses required per person of the population. All doses are included for those aged 12 and above, and are based on vaccination provider location.

Data as at:  
22 Jul 2022

Australia's COVID-19  
Vaccine Roadmap

First and Second Doses by residential location



# Aboriginal and Torres Strait Islander peoples

## Number of people vaccinated

Data as at:  
19 Jul 2022  
Updated weekly

Australia's COVID-19  
Vaccine Roadmap



**444,934**

people over the age of 16  
have had at least one dose

**85.0%**

of people over the age of 16  
have had at least one dose



**426,725**

people over the age of 16  
are fully vaccinated

**81.6%**

of people over the age of 16 are  
fully vaccinated



People aged 12 – 15 years

**47,690**

**41,787**

**67.6%**

At least one dose

**59.2%**

Fully vaccinated

### 178 Aboriginal community controlled health services (ACCHS)

0#

50

27

44

12

3

21

21

**ACT**

**NSW**

**NT**

**QLD**

**SA**

**TAS**

**VIC**

**WA**

Medicare Address State <sup>##</sup>	Individuals Dose 1	Individuals Dose 1 %	Individuals Dose 2	Individuals Dose 2 %
Australian Capital Territory	4,805	91.9%	4,685	89.6%
New South Wales	136,562	87.3%	133,513	85.4%
Northern Territory	41,236	89.8%	39,300	85.6%
Queensland	116,939	81.9%	111,619	78.2%
South Australia	20,124	80.7%	18,750	75.2%
Tasmania	13,922	88.9%	13,524	86.3%
Victoria	35,819	90.5%	35,026	88.5%
Western Australia	53,853	86.8%	50,274	81.0%
Unknown/Other Territories	21,674	70.6%	20,034	65.3%
<b>Totals</b>	<b>444,934</b>	<b>85.0%</b>	<b>426,725</b>	<b>81.6%</b>

Source: Australian Immunisation Register

\*Identifying as Aboriginal and Torres Strait Islander is optional and the estimated population may be under reported.

\*\*Includes all Aboriginal and Torres Strait Islander peoples who have received a vaccination, not limited to those administered in an ACCHS setting

#ACCHS in the ACT are currently operating as a Commonwealth Vaccine Clinics so not included to avoid double counting

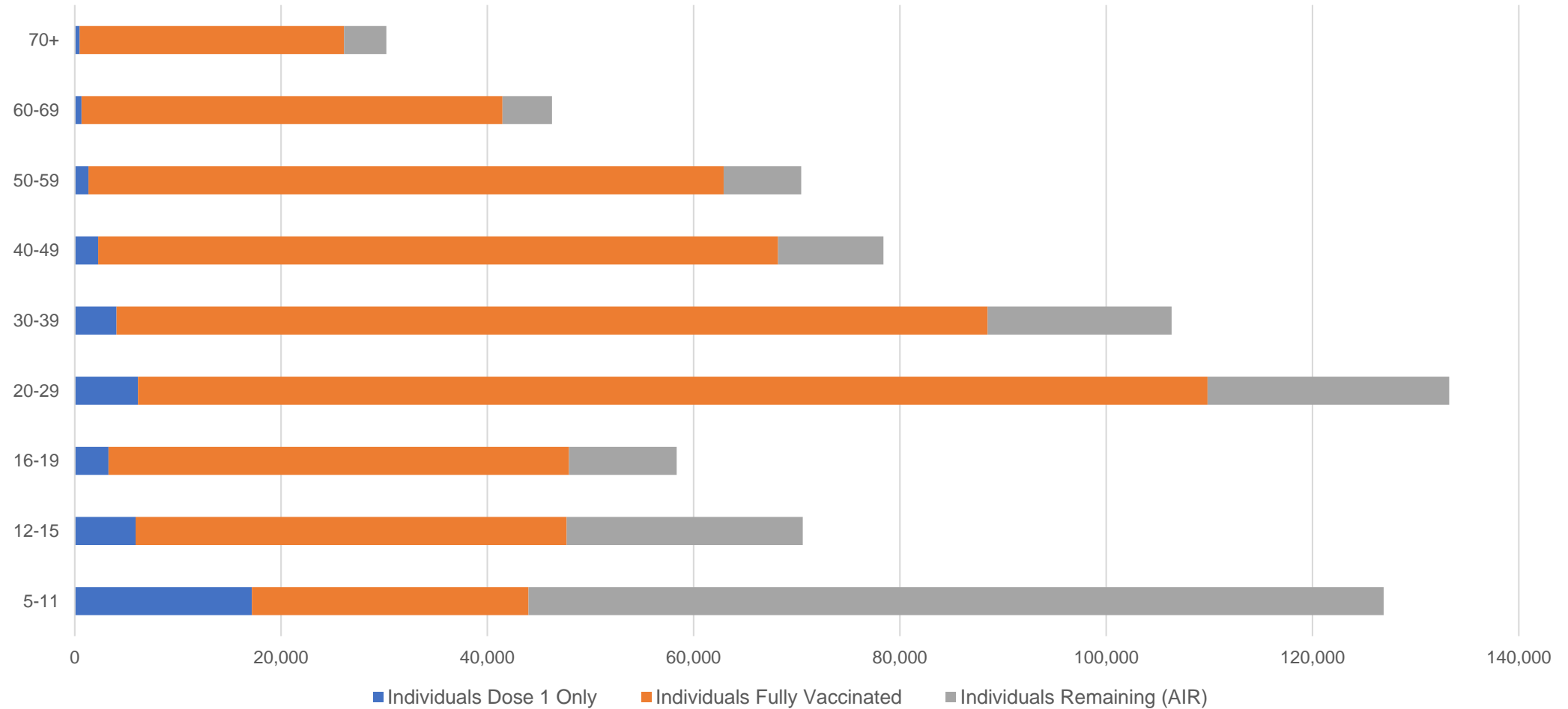
##The above table includes all identified Aboriginal and Torres Strait Islander people who are aged 16 and above by their state of residence.

# Aboriginal and Torres Strait Islander peoples

## Number of people vaccinated by age

Data as at:  
19 Jul 2022  
Updated weekly

Australia's COVID-19  
Vaccine Roadmap



Source: Australian Immunisation Register

# Commonwealth primary care

Data as at:  
22 Jul 2022

Australia's COVID-19  
Vaccine Roadmap



## Primary care vaccine administration sites

<b>5,691</b>	<b>123</b>	<b>178</b>	<b>3,617</b>
GPs	CVCs	ACCHS	Pharmacies



**39,011,940** total vaccine doses administered  
primary care settings as at 22 July  
**+ 95,638** recorded in the last 24 hours

## Primary care vaccinations by provider type

	Doses administered	Daily increase	7 day increase
General Practice* includes other Commonwealth	30,811,334	50,603	280,064
Pharmacy	8,200,606	45,035	256,561

**NSW**  
**13,441,898**  
(+32,761 daily increase)

**VIC**  
**9,666,116**  
(+23,685 daily increase)

**QLD**  
**7,549,851**  
(+20,931 daily increase)

**WA**  
**4,069,608**  
(+7,427 daily increase)

**TAS**  
**746,497**  
(+1,795 daily increase)

**SA**  
**2,362,583**  
(+6,395 daily increase)

**ACT**  
**624,275**  
(+2,175 daily increase)

**NT**  
**227,985**  
(+88 daily increase)

**323,127**

doses administered to persons  
residing in other territories or with  
missing residential information

\*General practice includes Commonwealth Vaccination Clinics, Aboriginal Community Health Centres, Royal Flying Doctor Service and other Commonwealth vaccination facilities

Source: Australian Immunisation Register

Data as at:  
22 Jul 2022

# Commonwealth aged care and disability doses administered



**1,324,279** (+ 379 last 24 hours)

Total vaccine doses administered in aged care and disability facilities as at 22 July

Number of doses administered as part of the Commonwealth aged and disability care rollout

**NSW**  
**572,968**  
(+55 daily increase)

**VIC**  
**248,546**  
(+56 daily increase)

**QLD**  
**211,151**  
(+69 daily increase)

**WA**  
**113,307**  
(+79 daily increase)

**TAS**  
**23,693**  
(<10 daily increase)

**SA**  
**86,628**  
(+12 daily increase)

**ACT**  
**17,958**  
(<10 daily increase)

**NT**  
**7,695**  
(<10 daily increase)

**42,333**

doses administered to persons  
residing in other territories or with  
missing residential information

\*Sourced from the Australian Immunisation Register. Includes all persons vaccinated at participating residential aged care, disability and related industry settings.

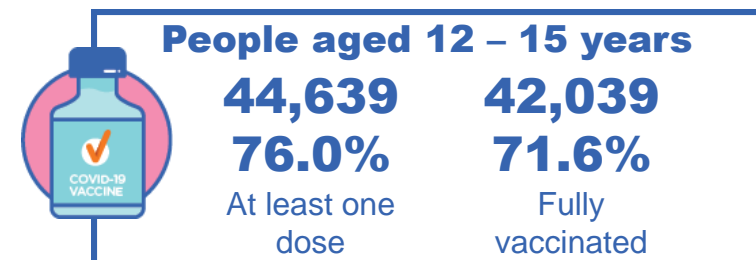
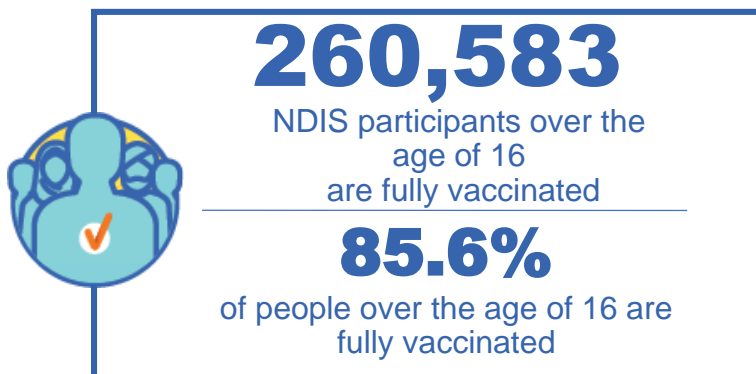
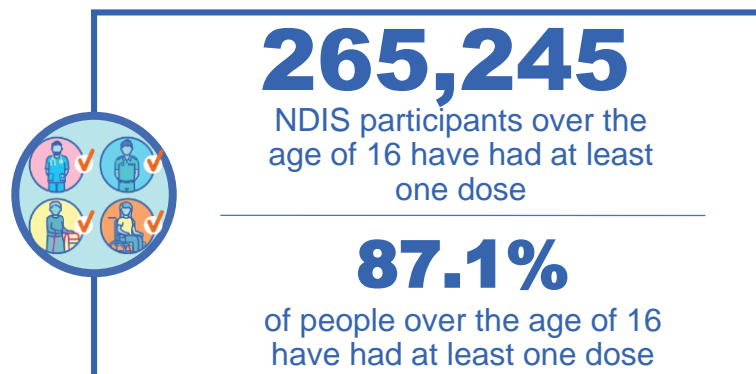
\*\*State level breakdown indicates the residential location and may not align to the state in which the vaccination occurred.

Source: Australian Immunisation Register

# National Disability Insurance Scheme (NDIS) reported vaccinations

Data as at:  
21 July 2022  
Updated weekly

Australia's COVID-19  
Vaccine Roadmap



## NDIS participant vaccinations

	People aged 16+ with at least one dose	People aged 16+ fully vaccinated	% People aged 16+ with at least one dose	% People aged 16+ fully vaccinated
ACT	4,975	4,912	89.1%	87.9%
NSW	81,063	79,802	87.6%	86.2%
NT	2,301	2,231	77.8%	75.4%
QLD	52,719	51,727	85.3%	83.7%
SA	21,776	21,280	84.9%	83.0%
TAS	6,629	6,478	87.4%	85.4%
VIC	70,423	69,282	88.3%	86.8%
WA	25,359	24,871	88.4%	86.7%
National	265,245	260,583	87.1%	85.6%

Source: Linkage between National Disability Insurance Agency data and the Australian Immunisation Register. Total NDIS participant numbers as at 30 June. Australian Immunisation Register data as at 20 July. Includes all participants regardless of residence type.

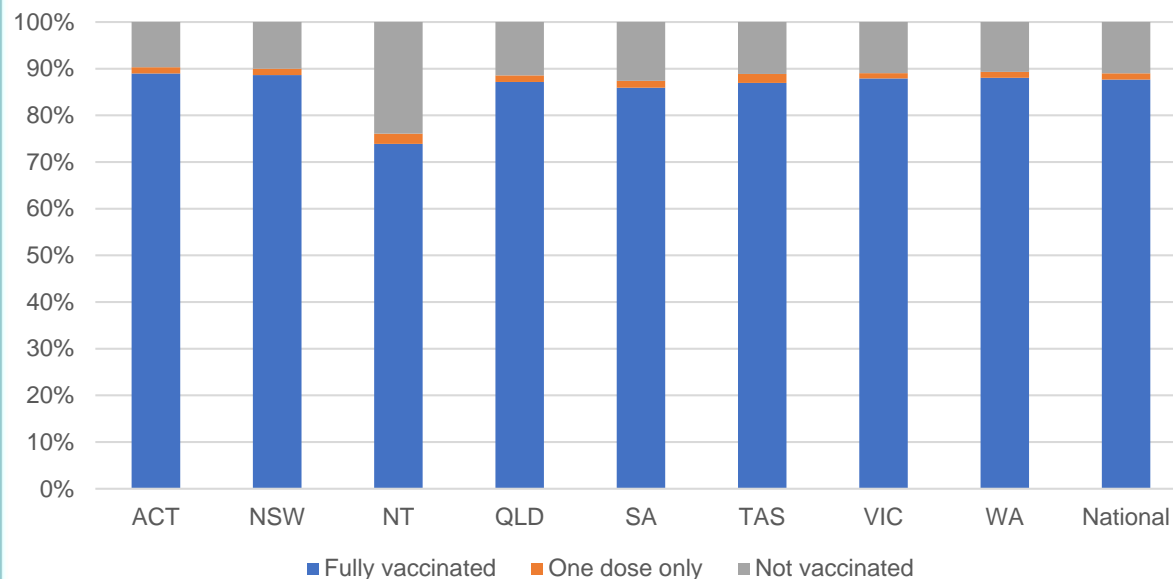
# National Disability Insurance Scheme (NDIS) reported vaccinations

Data as at:  
21 July 2022  
Updated weekly

Australia's COVID-19  
Vaccine Roadmap

NATIONAL	Total people with at least one dose	People fully vaccinated	Total number of individuals in cohort	% People with at least one dose	% People fully vaccinated
NDIS participants living in disability accommodation	21,222	20,901	23,858	89.0%	87.6%

## NDIS participants in disability and aged care accommodation



Source: Linkage between National Disability Insurance Agency data and the Australian Immunisation Register. Includes participants residing in disability accommodation only.

Source: Total NDIS participant numbers as at 30 June. Participant data as at 19 July. Australian Immunisation Register data as at 20 July. Worker data as at 21 July.

## NDIS workforce vaccinations

	NDIS workers with at least one dose	NDIS workers fully vaccinated	% NDIS workers with at least one dose	% NDIS workers fully vaccinated
NSW	128,331	123,529	98.4%	94.7%
VIC	117,364	114,279	97.8%	95.2%
QLD	71,454	70,608	97.9%	96.8%
WA	34,486	33,118	98.9%	95.0%
SA	35,781	34,094	98.6%	93.9%
TAS	12,423	12,039	98.5%	95.5%
ACT	12,337	12,310	99.8%	99.6%
NT	3,965	3,817	99.6%	95.9%
<b>TOTAL</b>	<b>416,141</b>	<b>403,794</b>	<b>98.3%</b>	<b>95.3%</b>

Source: the NDIS Commission has established a requirement for registered NDIS providers who provide intensive disability support services to report on the vaccination status of workers they employ, or otherwise engage, to deliver NDIS-funded supports and services, and who are required to be vaccinated in accordance with in-force state and territory public health orders. The statistics reflect data reported to the NDIS Commission by registered NDIS providers and should be considered indicative and subject to change

Note: Some registered NDIS providers are yet to report on the vaccination status of their workforce. The NDIS Commission is working with those providers around reporting requirements.

Remaining workers not included include those exempt from vaccination requirements, workers whose vaccination status is not yet verified by the provider (such as workers on leave) and provider reporting anomalies.



# Residential aged care vaccination rollout

Residential aged care facilities status

**175,877**

People fully vaccinated

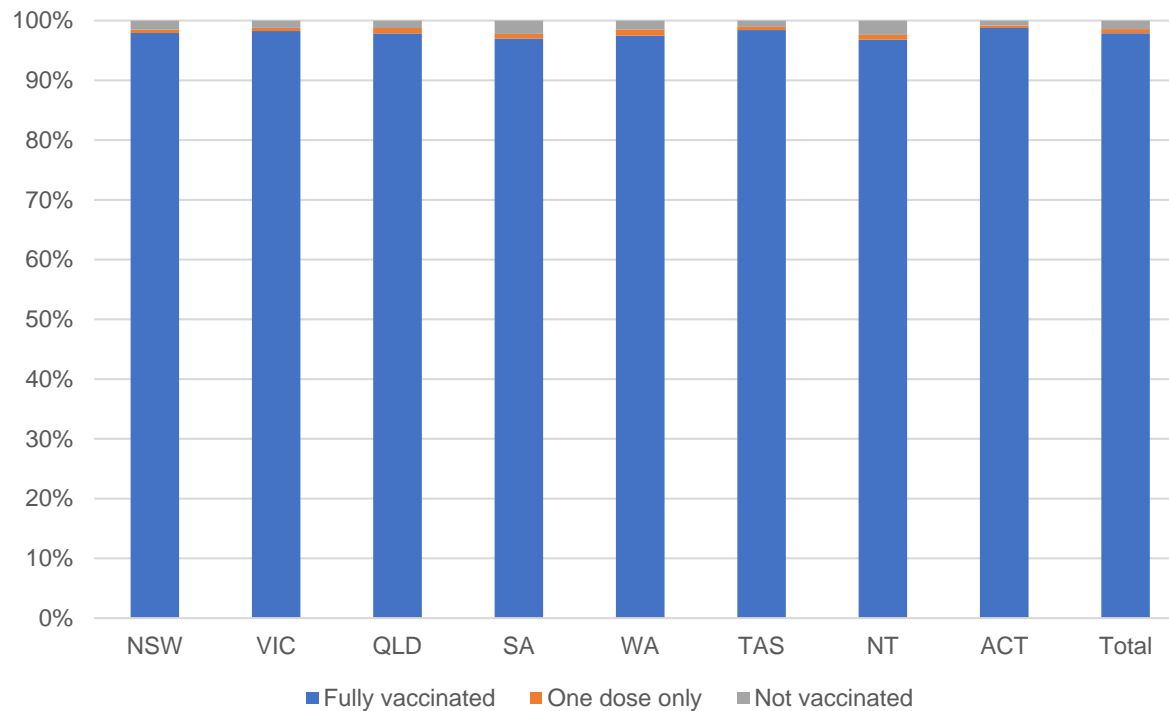
**177,118**

People with at least one dose

Australia's COVID-19 Vaccine Roadmap

Data as at:  
21 July 2022  
Updated weekly

## Aged care resident vaccinations



## Aged care worker vaccinations

Jurisdictions	Total workers with at least one dose	Workers fully vaccinated	% Workers with at least one dose	% Workers fully vaccinated
NSW	77,201	77,077	99.9%	99.7%
VIC	70,754	70,754	100.0%	100.0%
QLD	48,927	48,915	100.0%	100.0%
SA	26,708	26,698	100.0%	100.0%
WA	24,883	24,878	100.0%	100.0%
TAS	7,538	7,538	100.0%	100.0%
NT	918	918	100.0%	100.0%
ACT	2,951	2,951	100.0%	100.0%
Total	259,880	259,729	100.0%	99.9%

Source: Residential aged care provider self-reported COVID-19 vaccination information

\*Status updates are provided by facilities at least once per week. Reporting is updated Monday to Friday to encompass different facility updates being made on different days.

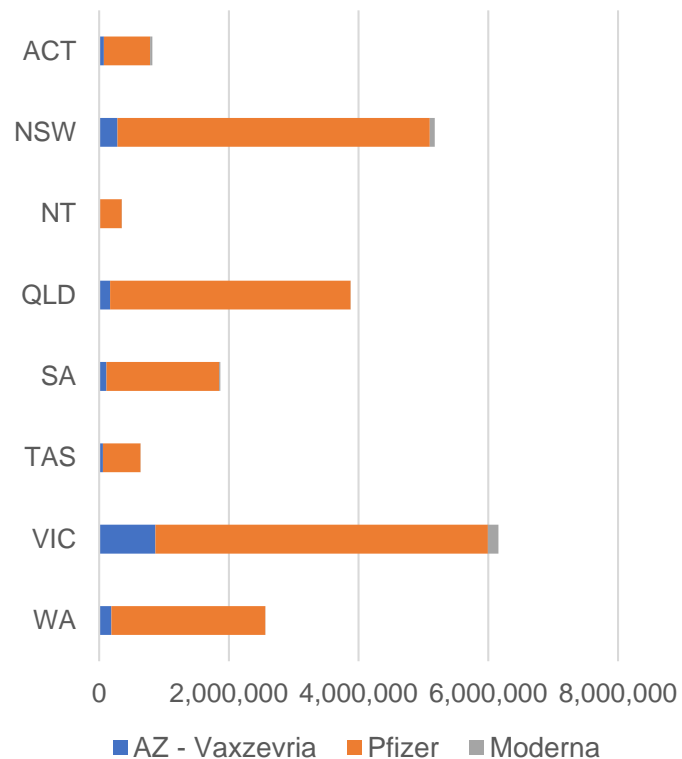
Data is sourced directly from Aged Care Service Providers and is not drawn or closely aligned with data from AIR due to inconsistencies and potential lags in uploading of records.



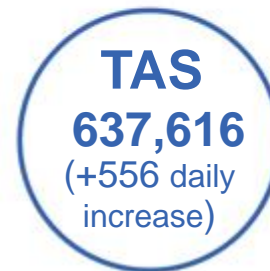
Data as at:  
22 Jul 2022

## Jurisdiction administered

Total vaccine doses administered in State and Territory clinics as at 22 July



**21,458,268** total vaccine doses administered  
in State and Territory clinics as at 22 July  
+ **10,726** recorded in the last 24 hours  
+ **71,030** recorded in the last 7 days

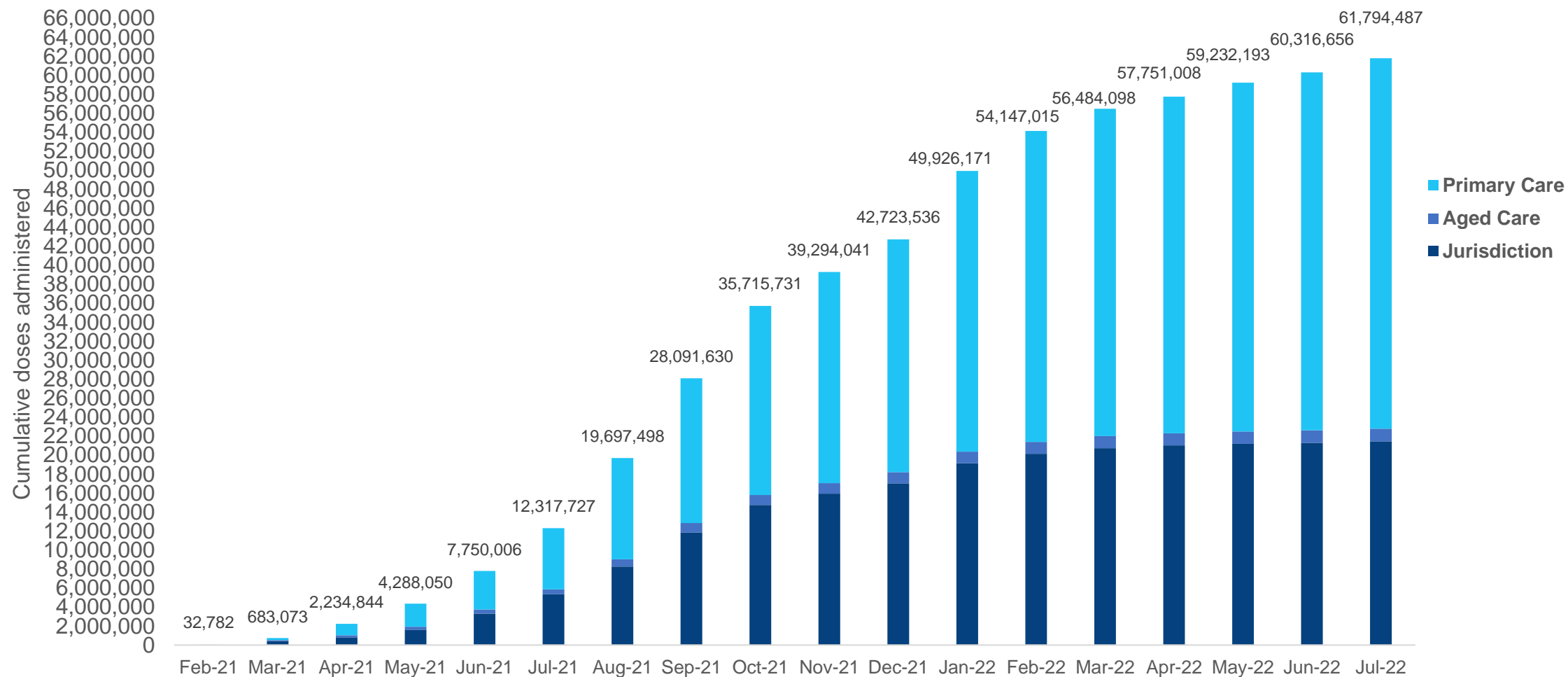


\*Sourced from the Australian Immunisation Register. Numbers are calculated as difference in daily cumulative reported numbers to allow for historical corrections.

Source: Australian Immunisation Register

# Cumulative doses administered by channel

Data as at:  
22 Jul 2022

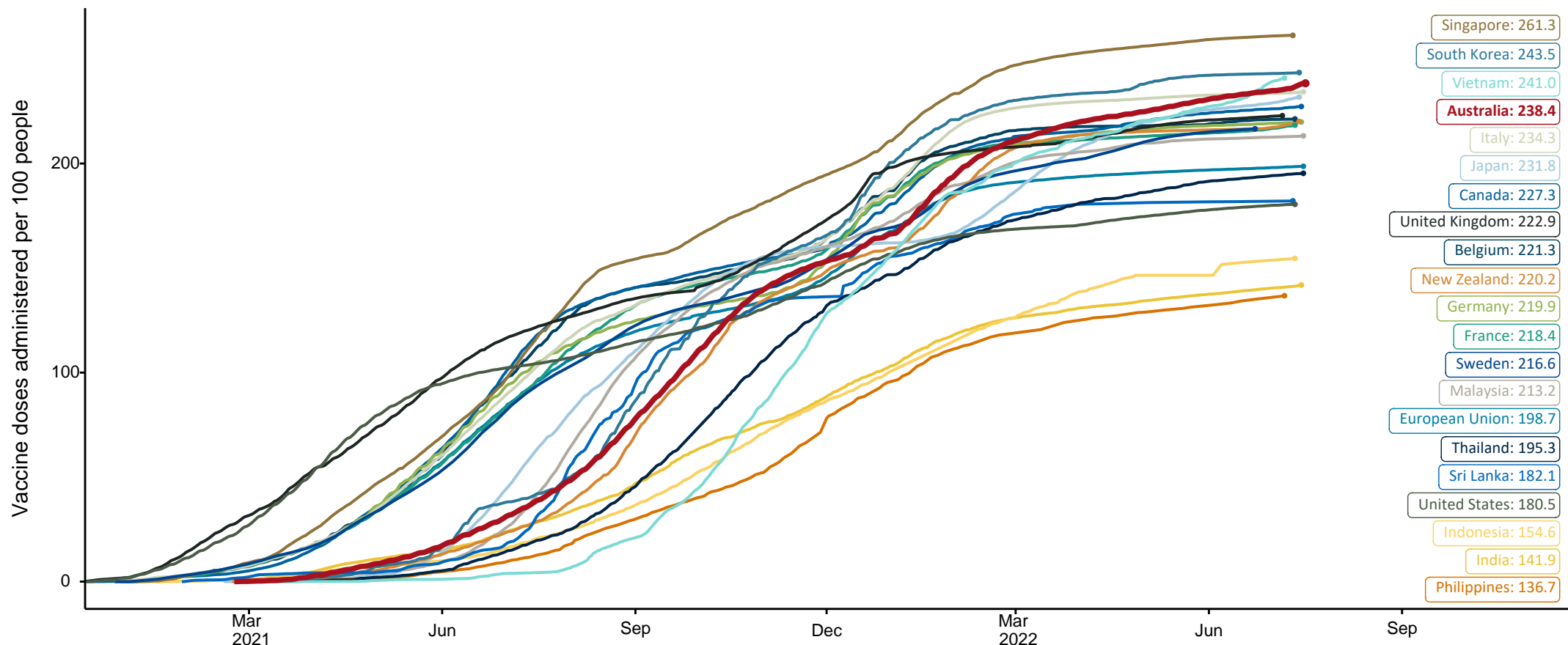


Source: Australian Immunisation Register

# COVID-19 vaccine doses per 100, Australia and select countries

Data as at:  
17 July 2022  
Updated weekly

Australia's COVID-19  
Vaccine Roadmap



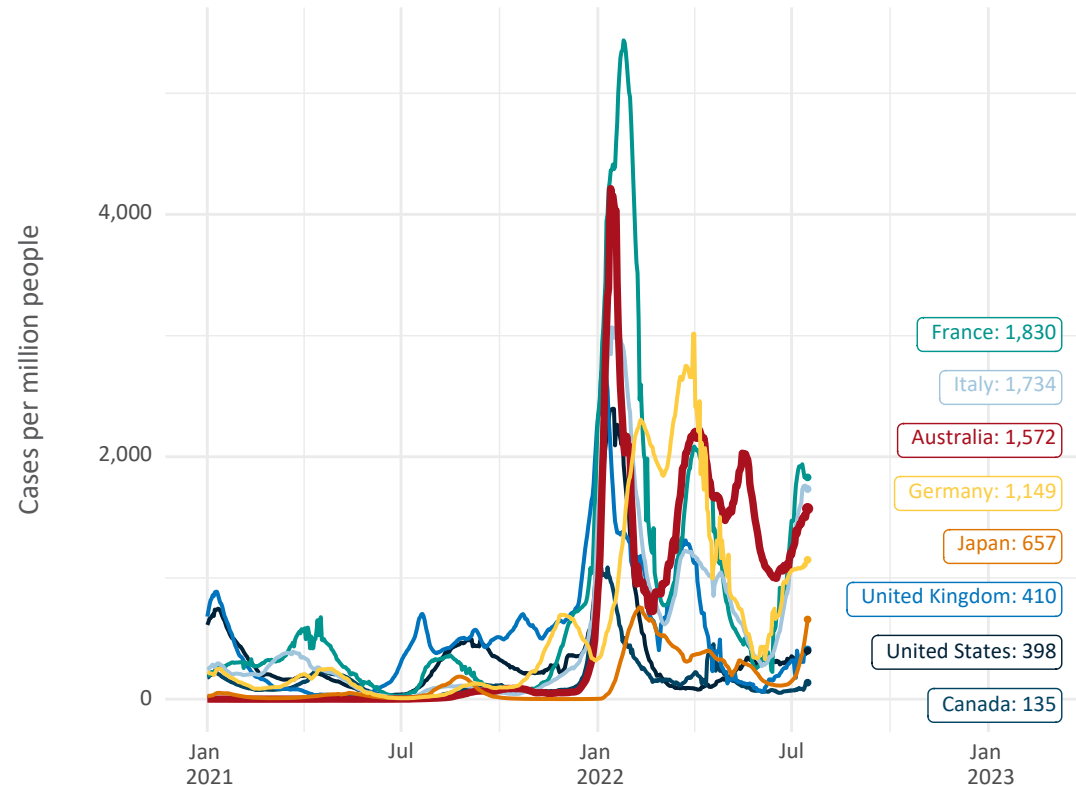
Note: From 11 January 2022, data for Australia includes all doses administered to people 5 and over. Prior to 11 January, data was for 12 and over.  
Source: Department of Health (Australia), Our World in Data (international)  
Latest data: 17 July

# International data – COVID-19

Australia's COVID-19  
Vaccine Roadmap

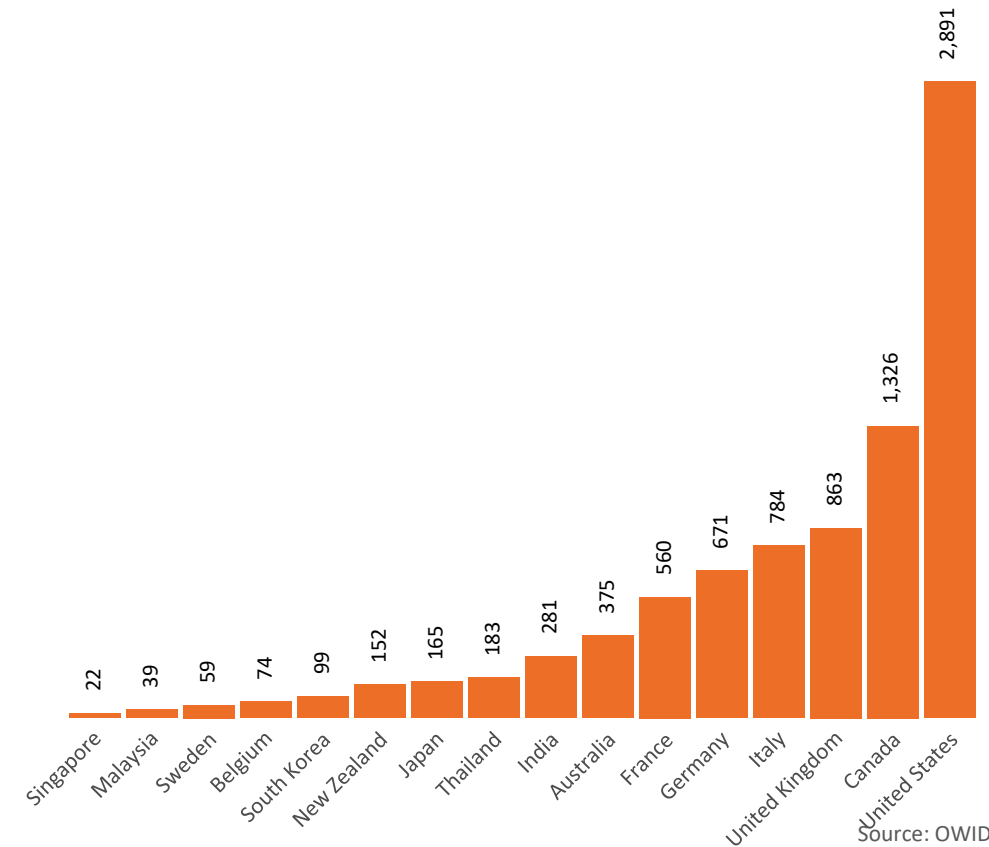
Data as at:  
17 July 2022  
Updated weekly

New daily cases per million since 2021, Australia and G7 countries  
Smoothed - 7 day average



Source: OWID  
Data downloaded: 18 Jul 2022 09:22  
Latest data: 16 Jul 2022

COVID-19 deaths in past 7 days - Australia and select countries



Source: OWID  
Data downloaded: 18 Jul 2022 09:22  
Latest data: 16 Jul 2022