



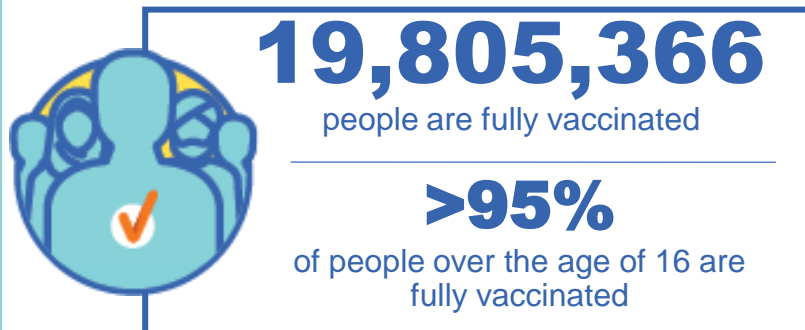
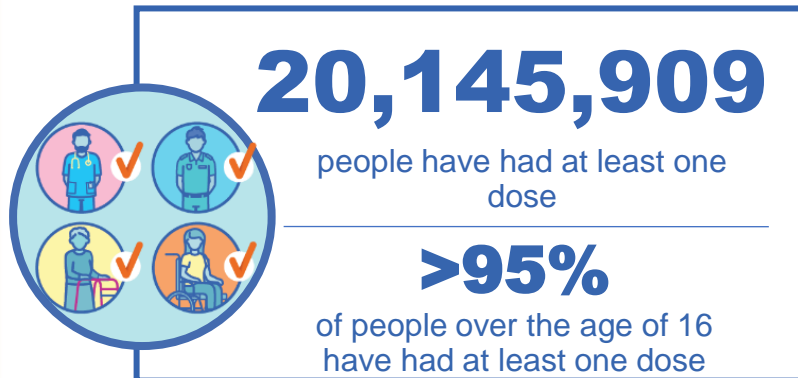
Australian Government
Operation COVID Shield

COVID-19 Vaccine Roll-out

22 July 2022

Data as at:
21 Jul 2022

Total vaccine doses



61,687,744 total vaccine
doses administered nationally as at 21 July

+108,802 recorded in the last 24 hours

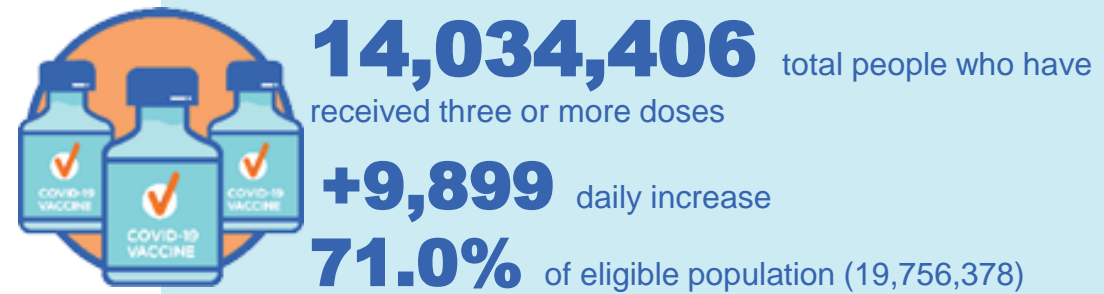
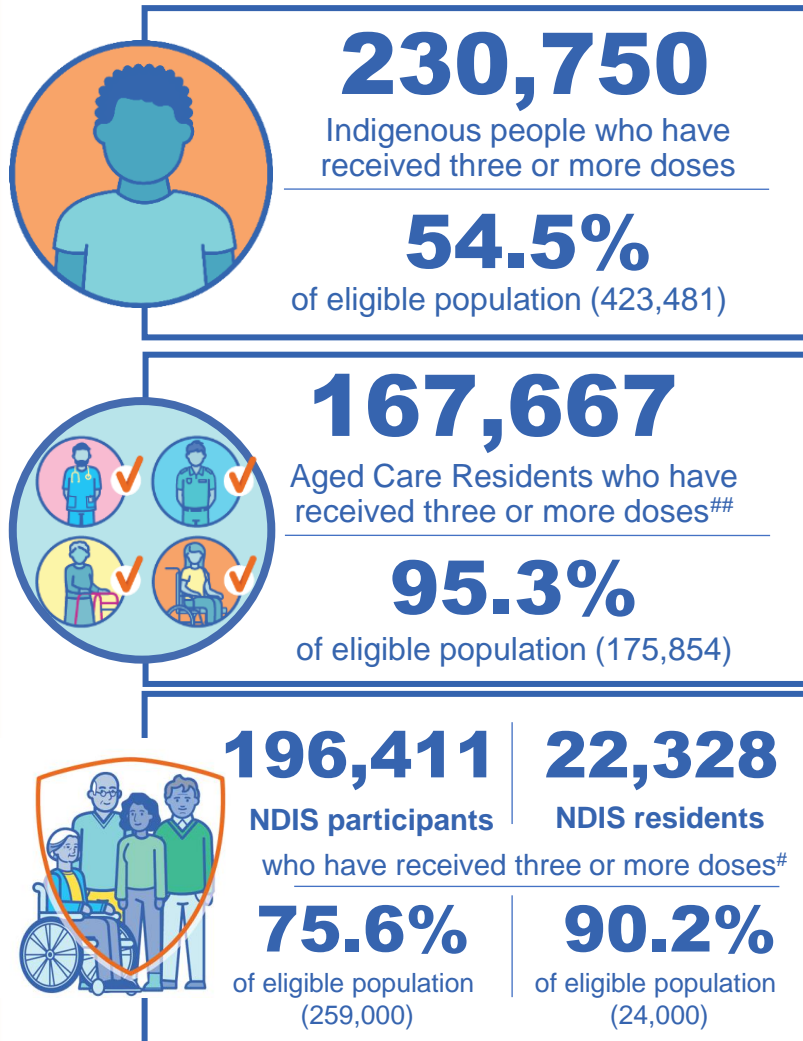


*Administration state breakdown indicates state in which a vaccine was administered

**Overall dose count includes instances of more than three doses per person in a small number of cases.

Source: Australian Immunisation Register

Booster Vaccinations



Data as at:
21 Jul 2022

	Number of People	Daily Increase	% of Eligible
NSW	4,290,250	3,282	68.7%
VIC	3,734,209	2,120	73.3%
QLD	2,438,383	2,295	64.1%
WA	1,713,124	714	82.9%
SA	1,007,470	886	74.8%
TAS	320,947	209	73.6%
ACT	276,394	167	79.5%
NT	132,174	92	78.4%

*People may belong to multiple groups and could be represented in the above breakdowns multiple times.
NDIS participants data as at 19 July 2022. ## Aged Care Residents data as at 21 July 2022.

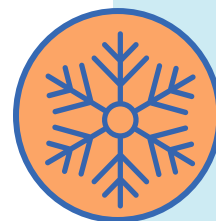
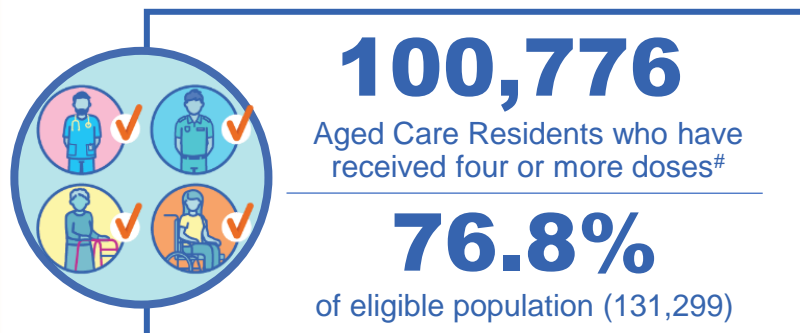
Source: Australian Immunisation Register

121,455 doses administered to persons residing in other territories or with missing residential information

Fourth Doses

Data as at:
21 Jul 2022

Australia's COVID-19
Vaccine Roadmap



3,500,741

total people (16+) who have received four doses

93,056

daily increase (16+)

30.4%

of eligible population (30+) (11,427,191)

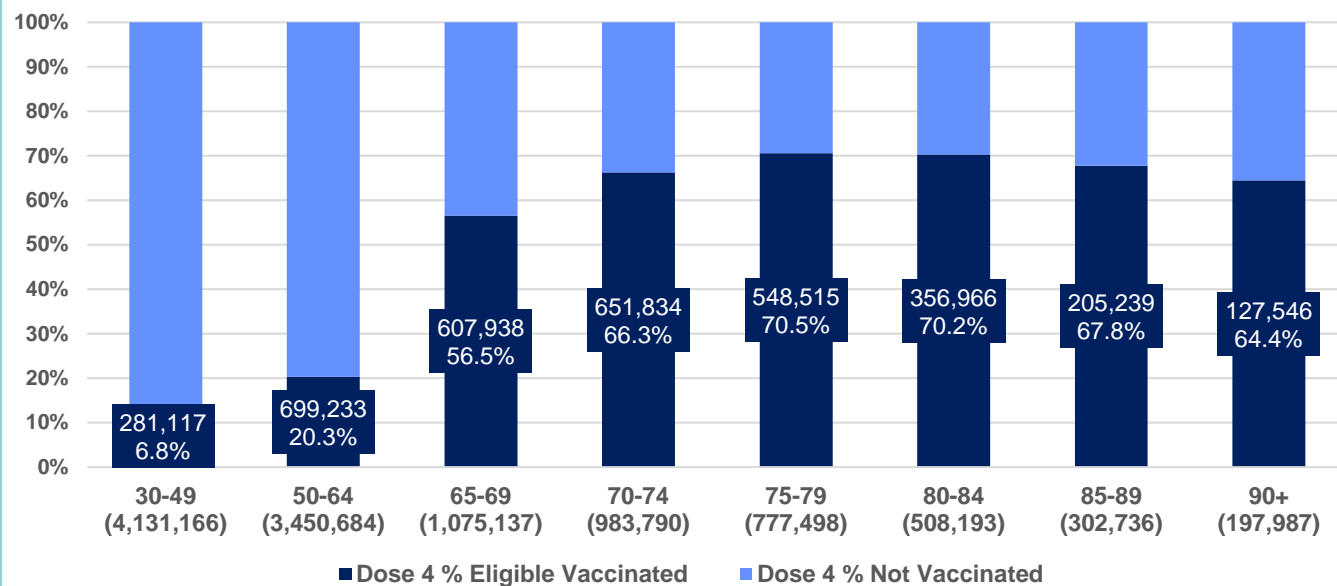
2,498,038

total people (65+) who have received four doses

65.0%

of eligible population (65+) (3,845,341)

% Individuals eligible vaccinated by current age



	Number of People 16+	Daily Increase
ACT	67,971	2,120
NSW	1,124,977	30,215
NT	15,481	714
QLD	687,773	18,832
SA	282,741	6,793
TAS	94,759	2,096
VIC	857,990	23,037
WA	352,041	8,737

17,008

doses administered to persons residing in other territories or with missing residential information

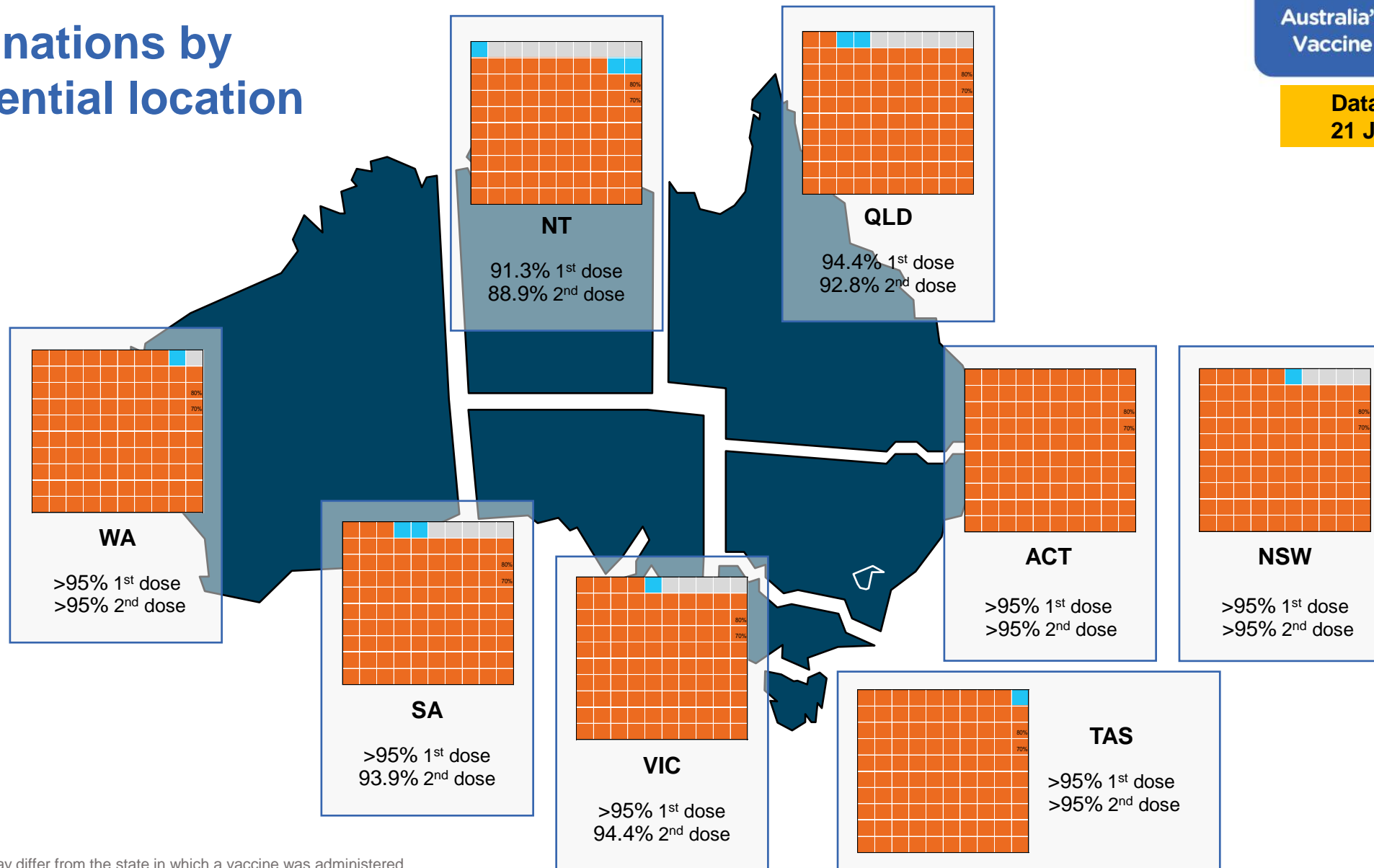
*People become eligible for a fourth dose three months after their third dose. Individuals may belong to multiple groups and could be represented in the above multiple times.
#Aged Care Residents data as at 20 July 2022.

Source: Australian Immunisation Register

Vaccinations by residential location

Australia's COVID-19
Vaccine Roadmap

Data as at:
21 Jul 2022



*Residential state may differ from the state in which a vaccine was administered

Commonwealth and Jurisdiction vaccine doses administered

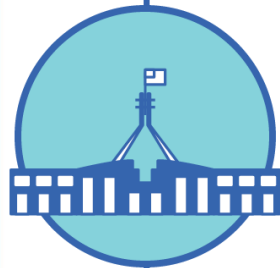
Data as at:
21 Jul 2022



61,687,744 total vaccine
doses administered nationally as at 21 July
+ 108,802 recorded in the last 24 hours



21,447,542
doses administered by state
and territory facilities
+ 11,916
recorded in the last 24 hours



40,240,202
doses administered by
commonwealth facilities
+ 96,886
recorded in the last 24 hours
38,916,302 total vaccine doses
administered in primary care settings
1,323,900 total vaccine doses
administered in aged care and disability
settings

NSW	Jurisdictions	Commonwealth
Cumulative	5,174,096	13,983,350
Daily increase	2,469	33,122

VIC	Jurisdictions	Commonwealth
Cumulative	6,161,237	9,975,317
Daily increase	2,729	23,335

QLD	Jurisdictions	Commonwealth
Cumulative	3,875,581	7,819,308
Daily increase	1,596	20,999

WA	Jurisdictions	Commonwealth
Cumulative	2,562,689	4,203,649
Daily increase	2,101	7,796

TAS	Jurisdictions	Commonwealth
Cumulative	637,060	765,475
Daily increase	414	2,001

SA	Jurisdictions	Commonwealth
Cumulative	1,869,350	2,437,713
Daily increase	1,609	6,413

ACT	Jurisdictions	Commonwealth
Cumulative	819,015	800,627
Daily increase	643	2,563

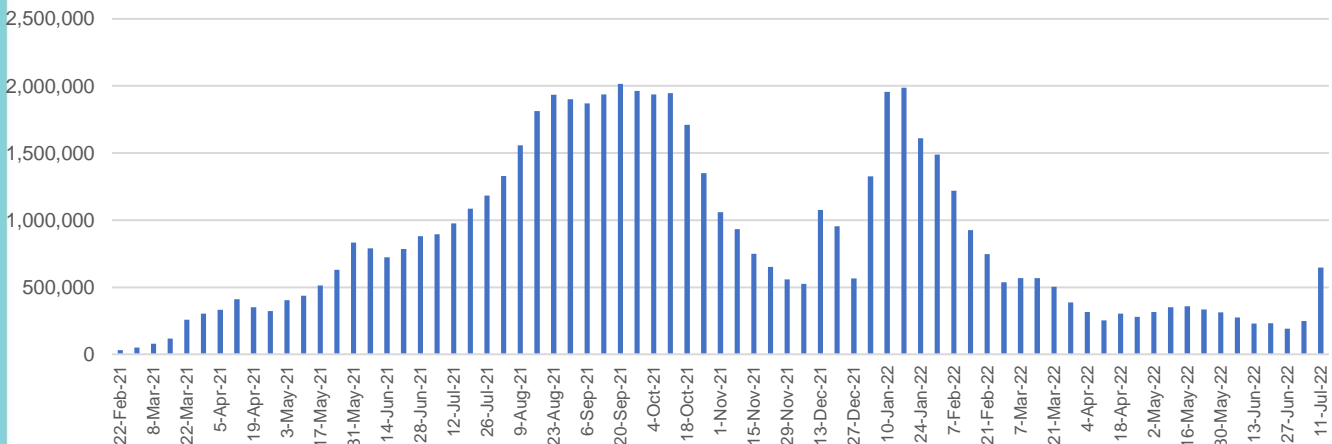
NT	Jurisdictions	Commonwealth
Cumulative	348,514	254,763
Daily increase	355	657

Vaccine milestone charts

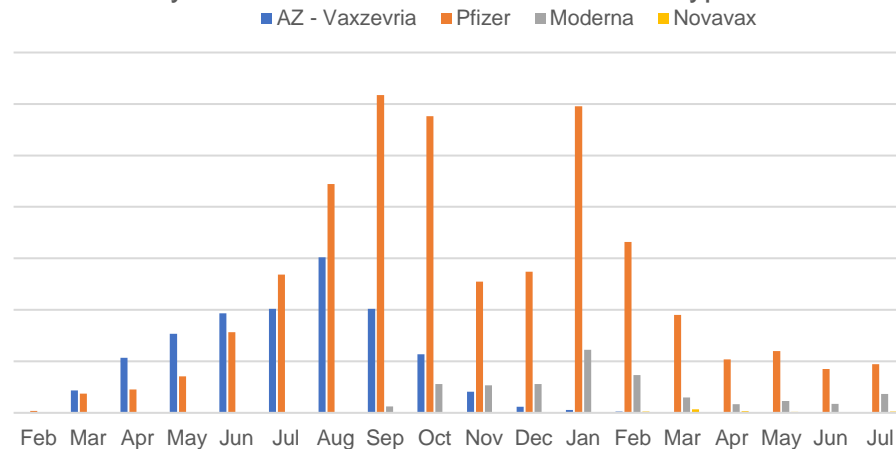
Data as at:
21 Jul 2022

Australia's COVID-19
Vaccine Roadmap

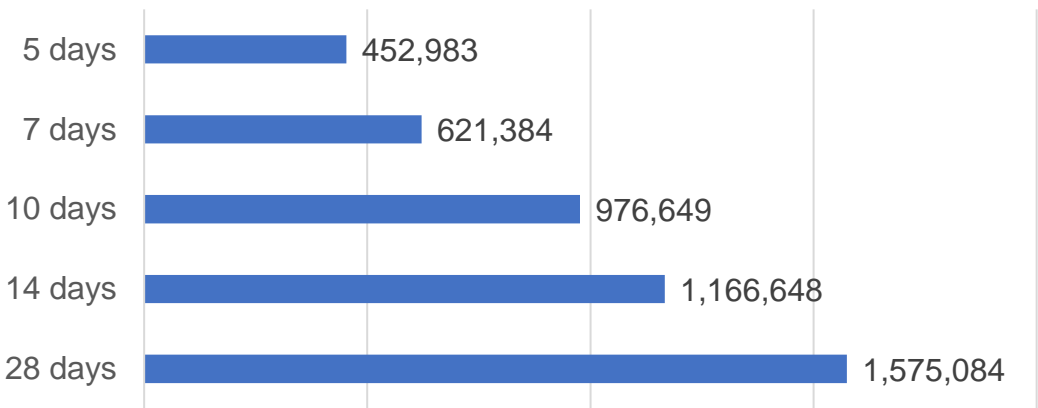
Doses Administered by Week



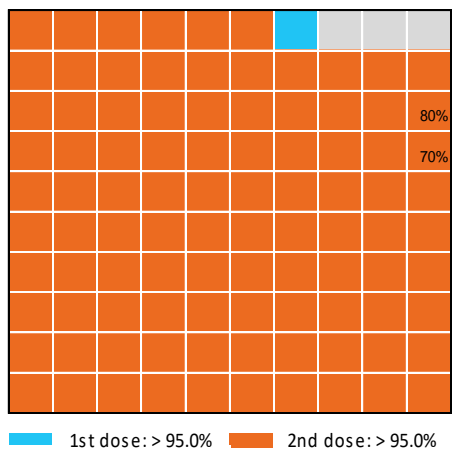
Doses by administration month and vaccine type



Doses Reported



Eligible population percentage coverage



*Each square represents 1% of the national population.
Squares are filled as milestones are achieved.

*Sourced from the Australian Immunisation Register.

Doses by age and sex

First and second doses by age and sex

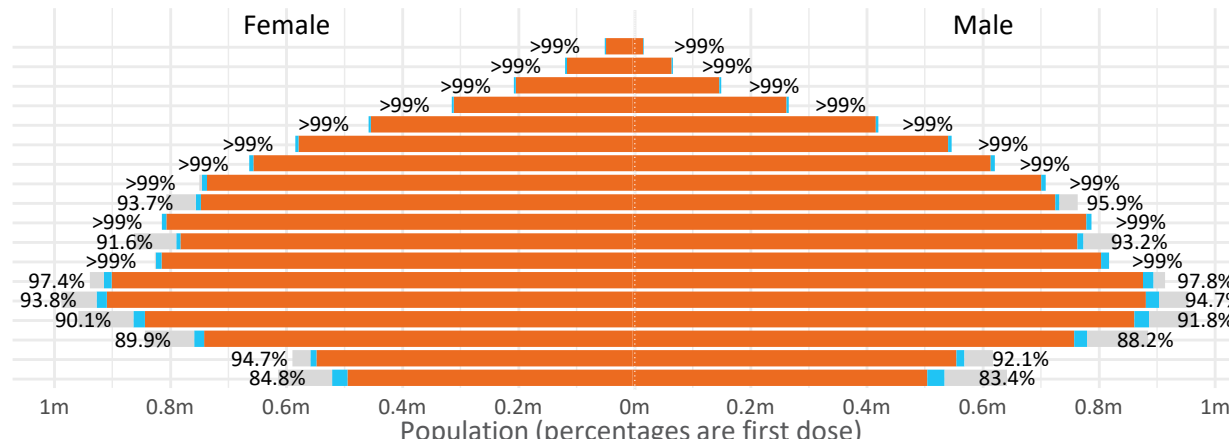
Australia's COVID-19
Vaccine Roadmap

Data as at:
21 Jul 2022

Age	Dose 1	Dose 2
95+	67,091 (>99%)	63,597 (>99%)
90-94	184,249 (>99%)	178,752 (>99%)
85-89	354,263 (>99%)	347,493 (>99%)
80-84	575,642 (>99%)	568,443 (>99%)
75-79	871,193 (>99%)	862,549 (>99%)
70-74	1,121,475 (>99%)	1,109,744 (>99%)
65-69	1,274,893 (>99%)	1,259,539 (>99%)
60-64	1,441,904 (>99%)	1,424,958 (>99%)
55-59	1,476,152 (94.9%)	1,459,177 (93.8%)
50-54	1,588,510 (>99%)	1,571,378 (>99%)
45-49	1,550,303 (92.5%)	1,531,816 (91.4%)
40-44	1,629,704 (>99%)	1,605,595 (>99%)
35-39	1,796,527 (97.9%)	1,764,090 (96.1%)
30-34	1,821,849 (94.7%)	1,779,506 (92.5%)
25-29	1,744,295 (91.5%)	1,695,987 (89.0%)
20-24	1,530,308 (89.4%)	1,489,399 (87.0%)
16-19	1,117,551 (93.5%)	1,093,343 (91.4%)
12-15	1,046,338 (84.1%)	990,059 (79.6%)

	16+	50+	12-15	5-11
Dose 1	97.70% (20,145,909 doses / 20,619,959 people)	>99% (8,955,372 doses / 8,749,703 people)	84.11% (1,046,338 doses / 1,243,990 people)	52.28% (1,190,215 doses / 2,276,638 people)
Dose 2	96.05% (19,805,366 doses / 20,619,959 people)	>99% (8,845,630 doses / 8,749,703 people)	79.59% (990,059 doses / 1,243,990 people)	40.38% (919,257 doses / 2,276,638 people)

■ Dose 1 ■ Dose 2 ■ Population

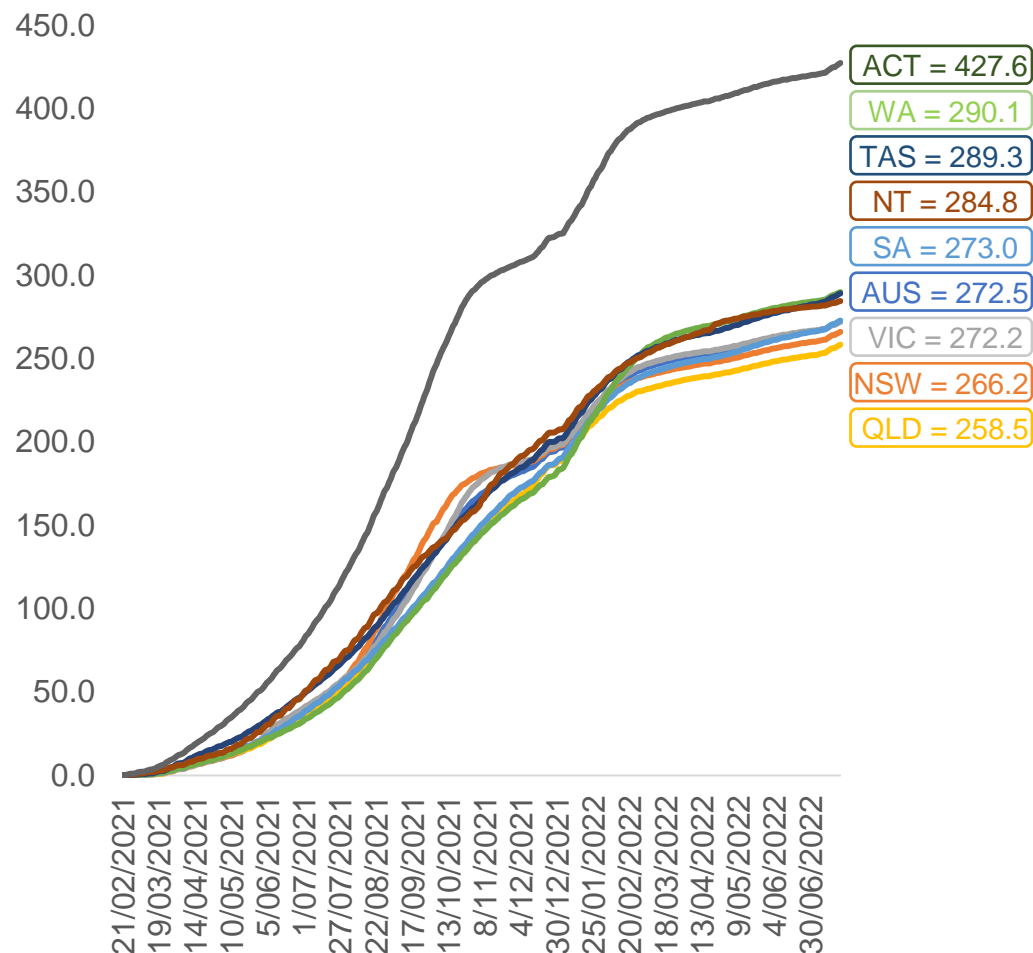


	AUS	ACT	NSW	NT	QLD	SA	TAS	VIC	WA
16 and over - dose 1	20,145,909	353,949	6,353,909	174,035	3,882,376	1,381,839	446,587	5,183,709	2,104,602
16 and over - dose 2	19,805,366	348,135	6,253,868	169,337	3,818,248	1,352,425	437,609	5,103,983	2,073,236
16 and over - population	20,619,959*	344,037	6,565,651	190,571	4,112,707	1,440,400	440,172	5,407,574	2,114,978
16 and over % with dose 1	97.70%	>99%	96.78%	91.32%	94.40%	95.93%	>99%	95.86%	>99%
16 and over % with dose 2	96.05%	>99%	95.25%	88.86%	92.84%	93.89%	>99%	94.39%	98.03%
5 to 11 - dose 1	1,190,215	31,721	356,513	13,097	205,916	83,420	28,365	324,033	139,664
5 to 11 - dose 2	919,257	27,670	282,874	8,861	152,667	65,019	23,342	250,162	104,034
5 to 11 - population	2,276,638	39,789	716,460	24,750	478,731	148,816	45,033	578,499	244,154
5 to 11 % with dose 1	52.28%	79.72%	49.76%	52.92%	43.01%	56.06%	62.99%	56.01%	57.20%
5 to 11 % with dose 2	40.38%	69.54%	39.48%	35.80%	31.89%	43.69%	51.83%	43.24%	42.61%
12 to 15 - dose 1	1,046,338	20,147	321,996	10,696	204,939	68,049	22,756	273,364	115,295
12 to 15 - dose 2	990,059	19,594	307,685	9,627	191,260	64,298	21,638	261,386	106,695
12 to 15 - population	1,243,990	19,693	390,330	13,060	270,146	82,747	26,308	308,611	132,869
12 to 15 % with dose 1	84.11%	>99%	82.49%	81.90%	75.86%	82.24%	86.50%	88.58%	86.77%
12 to 15 % with dose 2	79.59%	>99%	78.83%	73.71%	70.80%	77.70%	82.25%	84.70%	80.30%

*National population will not equal sum of listed jurisdictions due to a small number of people counted in national population residing in some 'other' territories. Sum of state doses will not add to national total as some records are unable to be geocoded to a State or Territory.
Doses sourced from Australian Immunisation Register, population from ABS ERP June 2020

Vaccinations by location

Cumulative total doses administered vs eligible state populations*

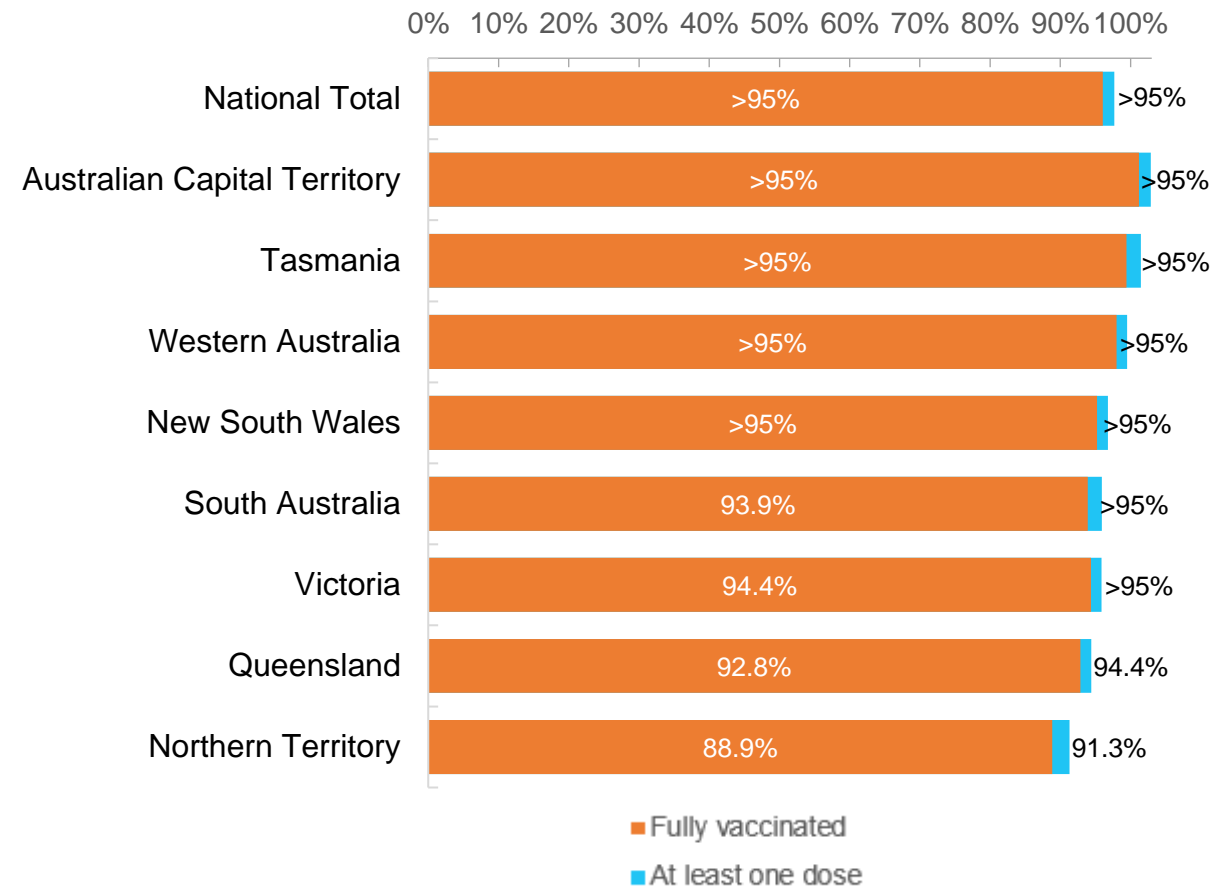


*Not an indication of percentage vaccinated, numbers will exceed 100 due to multiple doses required per person of the population. All doses are included for those aged 12 and above, and are based on vaccination provider location.

Data as at:
21 Jul 2022

Australia's COVID-19
Vaccine Roadmap

First and Second Doses by residential location



Aboriginal and Torres Strait Islander peoples

Number of people vaccinated

Data as at:
19 Jul 2022
Updated weekly

Australia's COVID-19
Vaccine Roadmap



444,934

people over the age of 16
have had at least one dose

85.0%

of people over the age of 16
have had at least one dose



426,725

people over the age of 16
are fully vaccinated

81.6%

of people over the age of 16 are
fully vaccinated



People aged 12 – 15 years

47,690

41,787

67.6%

At least one dose

59.2%

Fully vaccinated

178 Aboriginal community controlled health services (ACCHS)

0#

50

27

44

12

3

21

21

ACT

NSW

NT

QLD

SA

TAS

VIC

WA

Medicare Address State ^{##}	Individuals Dose 1	Individuals Dose 1 %	Individuals Dose 2	Individuals Dose 2 %
Australian Capital Territory	4,805	91.9%	4,685	89.6%
New South Wales	136,562	87.3%	133,513	85.4%
Northern Territory	41,236	89.8%	39,300	85.6%
Queensland	116,939	81.9%	111,619	78.2%
South Australia	20,124	80.7%	18,750	75.2%
Tasmania	13,922	88.9%	13,524	86.3%
Victoria	35,819	90.5%	35,026	88.5%
Western Australia	53,853	86.8%	50,274	81.0%
Unknown/Other Territories	21,674	70.6%	20,034	65.3%
Totals	444,934	85.0%	426,725	81.6%

Source: Australian Immunisation Register

*Identifying as Aboriginal and Torres Strait Islander is optional and the estimated population may be under reported.

**Includes all Aboriginal and Torres Strait Islander peoples who have received a vaccination, not limited to those administered in an ACCHS setting

#ACCHS in the ACT are currently operating as a Commonwealth Vaccine Clinics so not included to avoid double counting

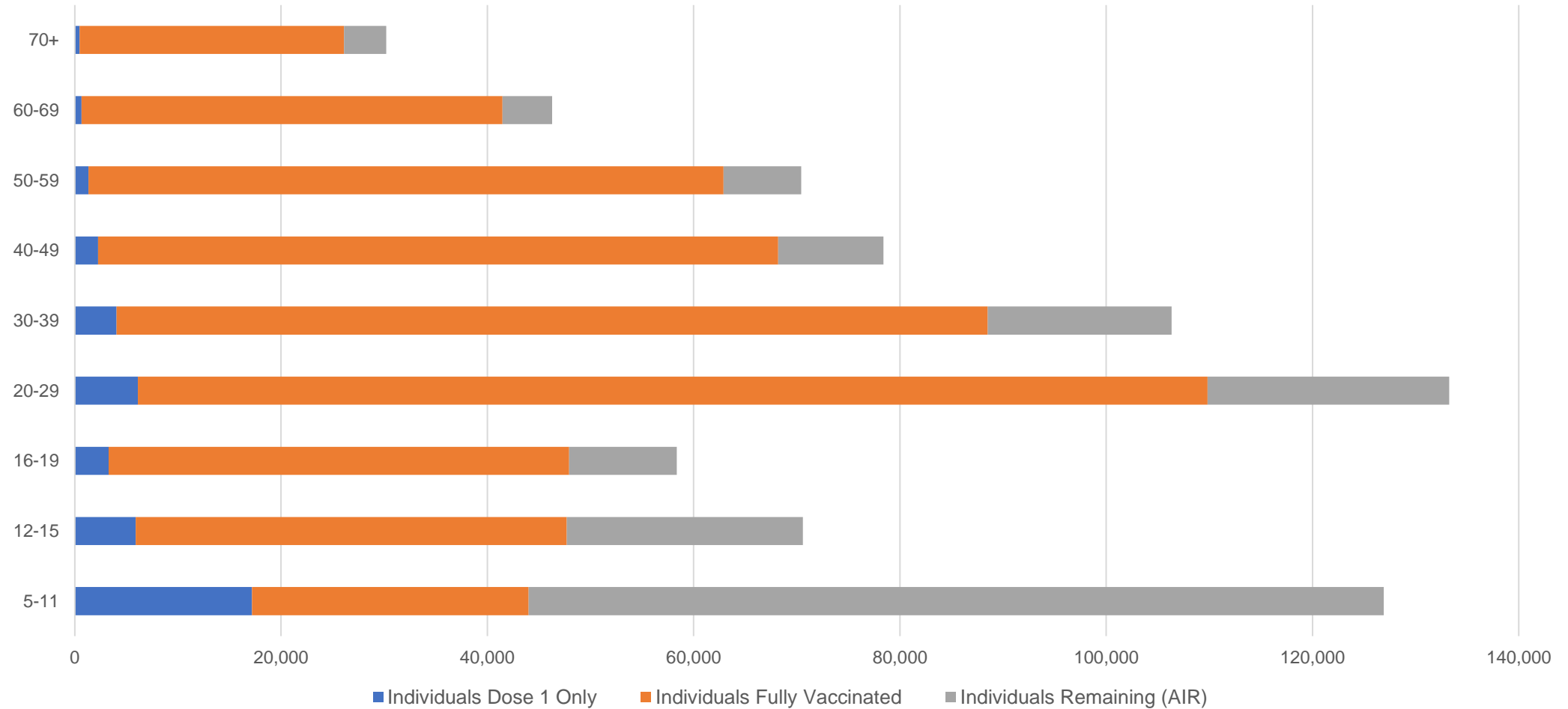
##The above table includes all identified Aboriginal and Torres Strait Islander people who are aged 16 and above by their state of residence.

Aboriginal and Torres Strait Islander peoples

Number of people vaccinated by age

Data as at:
19 Jul 2022
Updated weekly

Australia's COVID-19
Vaccine Roadmap



Source: Australian Immunisation Register

Commonwealth primary care

Data as at:
21 Jul 2022

Australia's COVID-19
Vaccine Roadmap



Primary care vaccine administration sites

5,694	123	178	3,617
GPs	CVCs	ACCHS	Pharmacies



38,916,302 total vaccine doses administered
primary care settings as at 21 July
+ 96,302 recorded in the last 24 hours

Primary care vaccinations by provider type

	Doses administered	Daily increase	7 day increase
General Practice* includes other Commonwealth	30,760,731	50,881	284,174
Pharmacy	8,155,571	45,421	264,691

NSW
13,409,137
(+32,829 daily increase)

VIC
9,642,431
(+23,385 daily increase)

QLD
7,528,920
(+20,425 daily increase)

WA
4,062,181
(+7,837 daily increase)

TAS
744,702
(+2,005 daily increase)

SA
2,356,188
(+6,407 daily increase)

ACT
622,100
(+2,398 daily increase)

NT
227,897
(+581 daily increase)

322,746

doses administered to persons
residing in other territories or with
missing residential information

*General practice includes Commonwealth Vaccination Clinics, Aboriginal Community Health Centres, Royal Flying Doctor Service and other Commonwealth vaccination facilities

Source: Australian Immunisation Register

Data as at:
21 Jul 2022

Commonwealth aged care and disability doses administered



1,323,900 (+ 584 last 24 hours)

Total vaccine doses administered in aged care and disability facilities as at 21 July

Number of doses administered as part of the Commonwealth aged and disability care rollout

NSW
572,913
(+54 daily increase)

VIC
248,490
(+125 daily increase)

QLD
211,082
(+197 daily increase)

WA
113,228
(+81 daily increase)

TAS
23,712
(<10 daily increase)

SA
86,616
(+31 daily increase)

ACT
17,953
(<10 daily increase)

NT
7,696
(<10 daily increase)

42,210

doses administered to persons
residing in other territories or with
missing residential information

*Sourced from the Australian Immunisation Register. Includes all persons vaccinated at participating residential aged care, disability and related industry settings.

**State level breakdown indicates the residential location and may not align to the state in which the vaccination occurred.

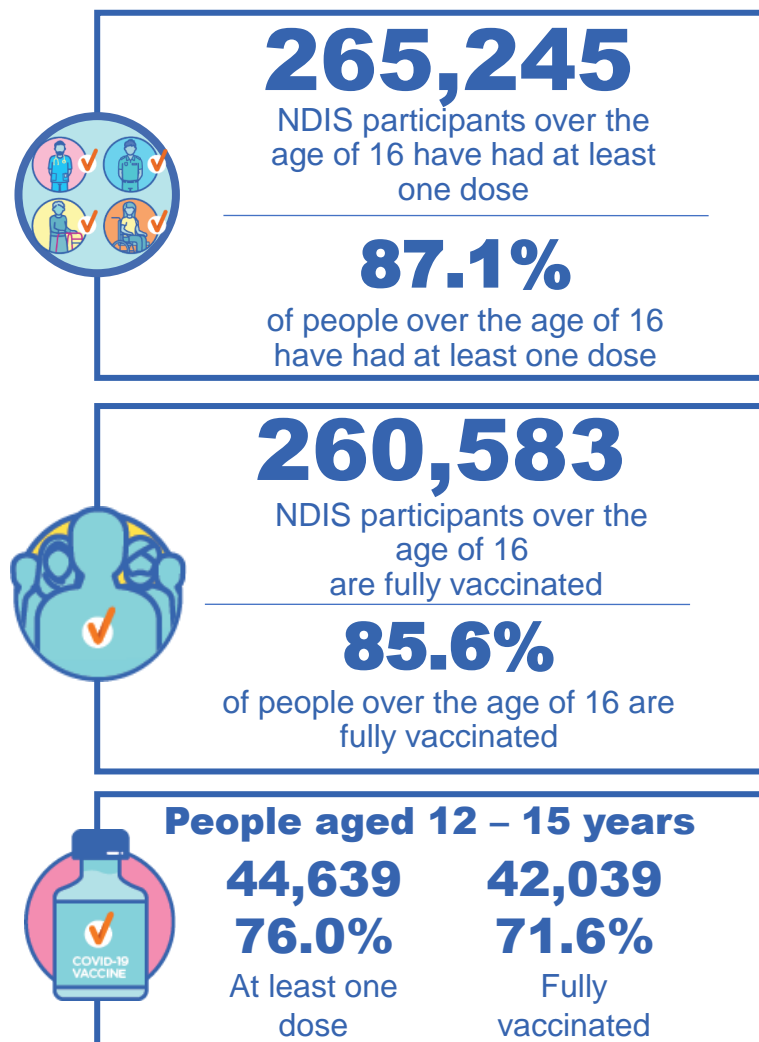
Source: Australian Immunisation Register

National Disability Insurance Scheme (NDIS) reported vaccinations

Data as at:
21 July 2022
Updated weekly

Australia's COVID-19
Vaccine Roadmap

NDIS participant vaccinations



	People aged 16+ with at least one dose	People aged 16+ fully vaccinated	% People aged 16+ with at least one dose	% People aged 16+ fully vaccinated
ACT	4,975	4,912	89.1%	87.9%
NSW	81,063	79,802	87.6%	86.2%
NT	2,301	2,231	77.8%	75.4%
QLD	52,719	51,727	85.3%	83.7%
SA	21,776	21,280	84.9%	83.0%
TAS	6,629	6,478	87.4%	85.4%
VIC	70,423	69,282	88.3%	86.8%
WA	25,359	24,871	88.4%	86.7%
National	265,245	260,583	87.1%	85.6%

Source: Linkage between National Disability Insurance Agency data and the Australian Immunisation Register. Total NDIS participant numbers as at 30 June. Australian Immunisation Register data as at 20 July. Includes all participants regardless of residence type.

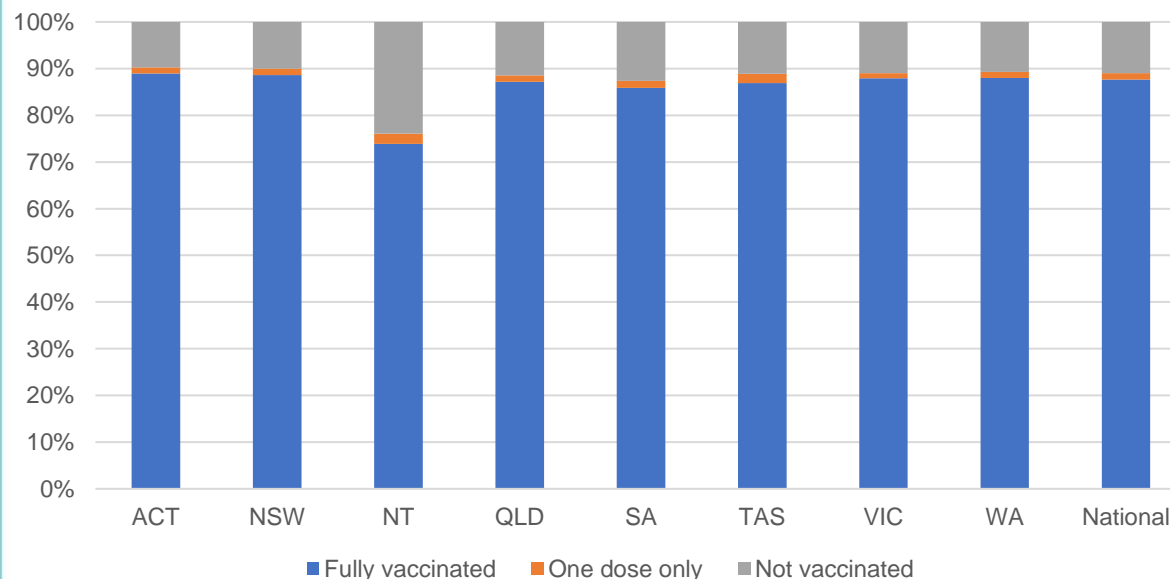
National Disability Insurance Scheme (NDIS) reported vaccinations

Data as at:
21 July 2022
Updated weekly

Australia's COVID-19
Vaccine Roadmap

NATIONAL	Total people with at least one dose	People fully vaccinated	Total number of individuals in cohort	% People with at least one dose	% People fully vaccinated
NDIS participants living in disability accommodation	21,222	20,901	23,858	89.0%	87.6%

NDIS participants in disability and aged care accommodation



Source: Linkage between National Disability Insurance Agency data and the Australian Immunisation Register. Includes participants residing in disability accommodation only.

Source: Total NDIS participant numbers as at 30 June. Participant data as at 19 July. Australian Immunisation Register data as at 20 July. Worker data as at 21 July.

NDIS workforce vaccinations

	NDIS workers with at least one dose	NDIS workers fully vaccinated	% NDIS workers with at least one dose	% NDIS workers fully vaccinated
NSW	128,331	123,529	98.4%	94.7%
VIC	117,364	114,279	97.8%	95.2%
QLD	71,454	70,608	97.9%	96.8%
WA	34,486	33,118	98.9%	95.0%
SA	35,781	34,094	98.6%	93.9%
TAS	12,423	12,039	98.5%	95.5%
ACT	12,337	12,310	99.8%	99.6%
NT	3,965	3,817	99.6%	95.9%
TOTAL	416,141	403,794	98.3%	95.3%

Source: the NDIS Commission has established a requirement for registered NDIS providers who provide intensive disability support services to report on the vaccination status of workers they employ, or otherwise engage, to deliver NDIS-funded supports and services, and who are required to be vaccinated in accordance with in-force state and territory public health orders. The statistics reflect data reported to the NDIS Commission by registered NDIS providers and should be considered indicative and subject to change

Note: Some registered NDIS providers are yet to report on the vaccination status of their workforce. The NDIS Commission is working with those providers around reporting requirements.

Remaining workers not included include those exempt from vaccination requirements, workers whose vaccination status is not yet verified by the provider (such as workers on leave) and provider reporting anomalies.

Residential aged care vaccination rollout

Residential aged care facilities status

175,877

People fully vaccinated

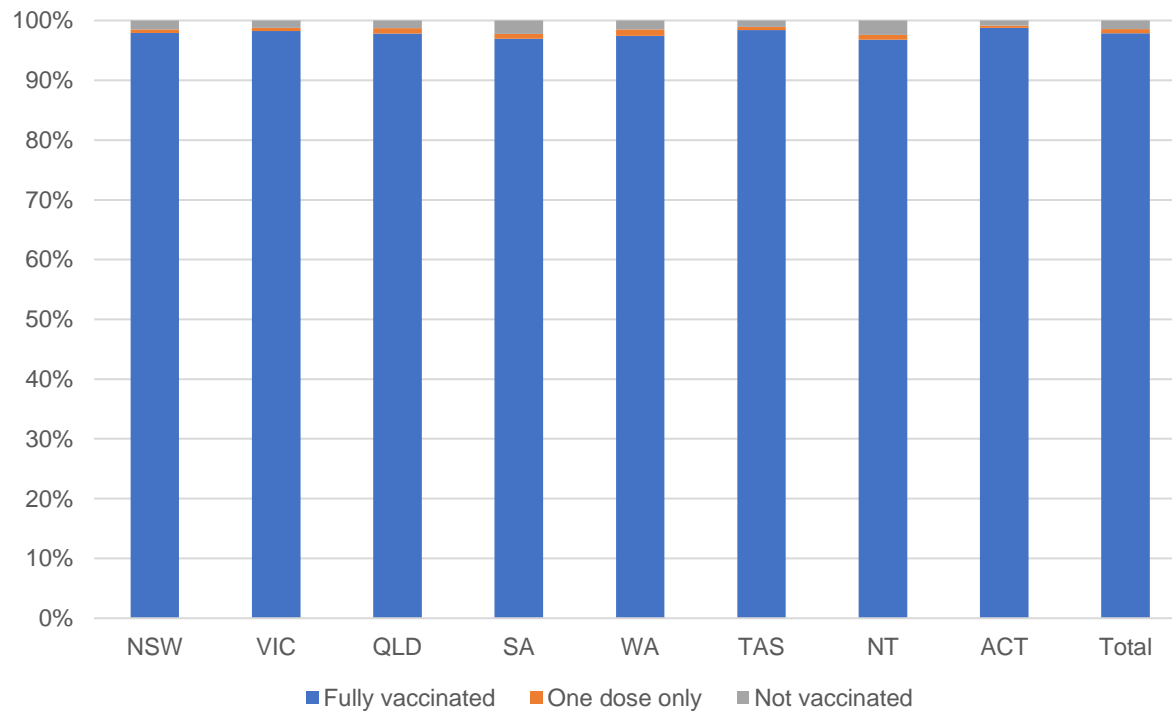
177,118

People with at least one dose

Australia's COVID-19 Vaccine Roadmap

Data as at:
21 July 2022
Updated weekly

Aged care resident vaccinations



Aged care worker vaccinations

Jurisdictions	Total workers with at least one dose	Workers fully vaccinated	% Workers with at least one dose	% Workers fully vaccinated
NSW	77,201	77,077	99.9%	99.7%
VIC	70,754	70,754	100.0%	100.0%
QLD	48,927	48,915	100.0%	100.0%
SA	26,708	26,698	100.0%	100.0%
WA	24,883	24,878	100.0%	100.0%
TAS	7,538	7,538	100.0%	100.0%
NT	918	918	100.0%	100.0%
ACT	2,951	2,951	100.0%	100.0%
Total	259,880	259,729	100.0%	99.9%

Source: Residential aged care provider self-reported COVID-19 vaccination information

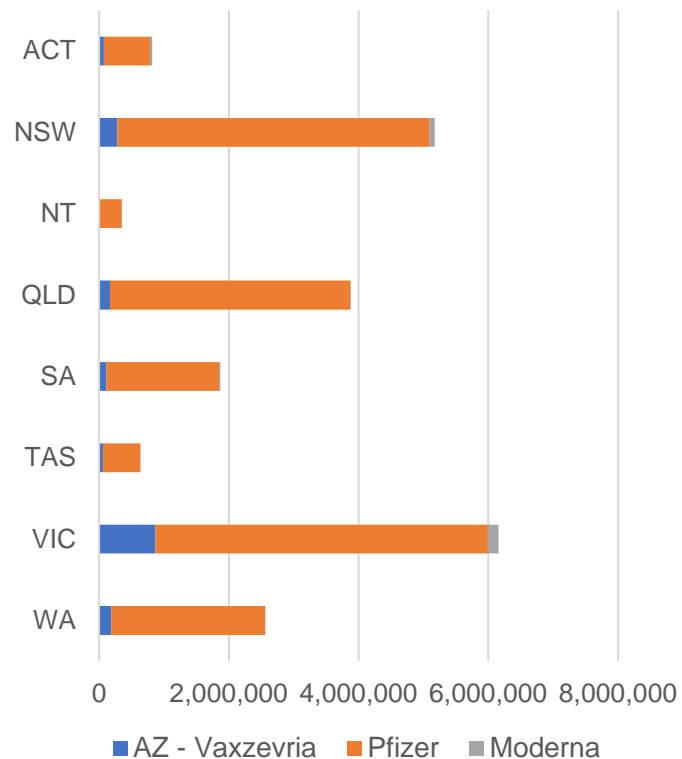
*Status updates are provided by facilities at least once per week. Reporting is updated Monday to Friday to encompass different facility updates being made on different days.

Data is sourced directly from Aged Care Service Providers and is not drawn or closely aligned with data from AIR due to inconsistencies and potential lags in uploading of records.

Data as at:
21 Jul 2022

Jurisdiction administered

Total vaccine doses administered in State and Territory clinics as at 21 July



21,447,542 total vaccine doses administered
in State and Territory clinics as at 21 July
+ **11,916** recorded in the last 24 hours
+ **70,518** recorded in the last 7 days

NSW
5,174,096
(+2,469 daily
increase)

VIC
6,161,237
(+2,729 daily
increase)

QLD
3,875,581
(+1,596 daily
increase)

WA
2,562,689
(+2,101 daily
increase)

TAS
637,060
(+414 daily
increase)

SA
1,869,350
(+1,609 daily
increase)

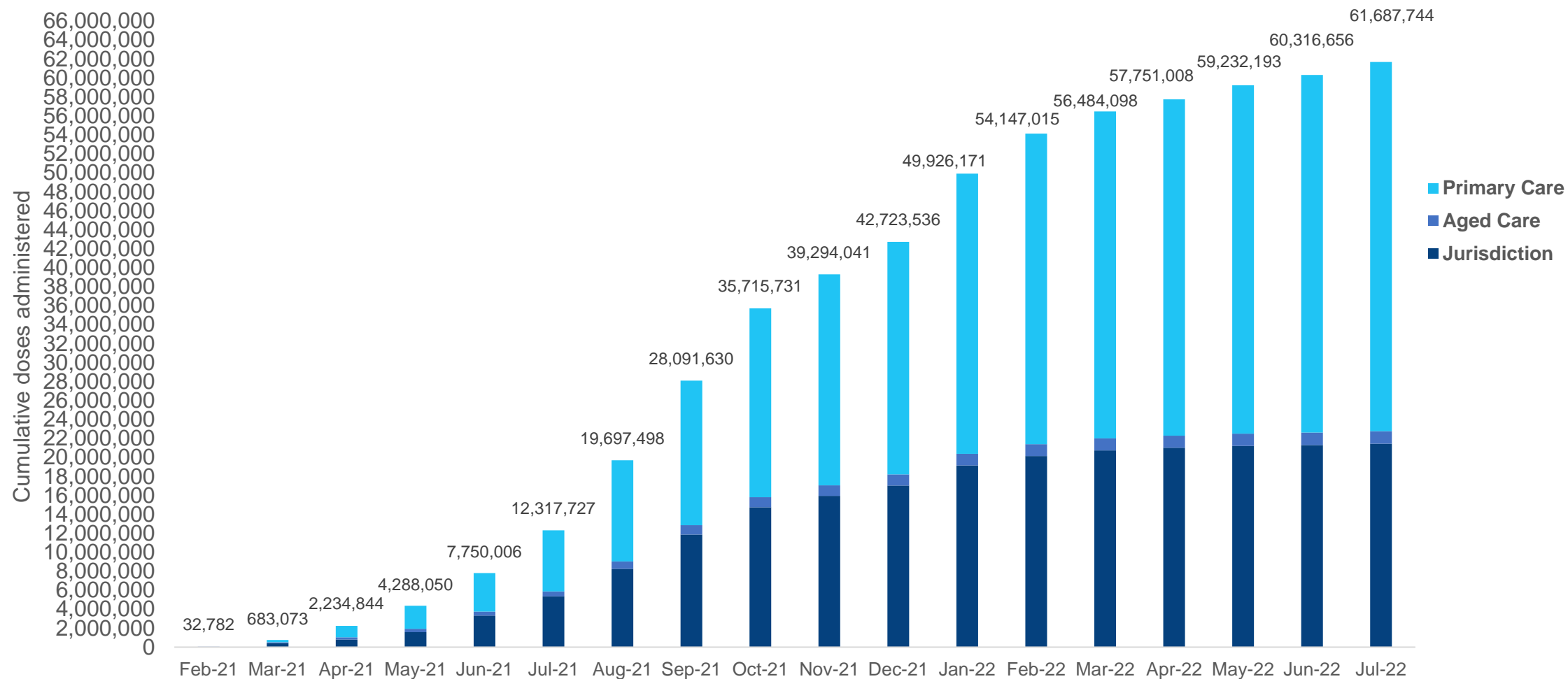
ACT
819,015
(+643 daily
increase)

NT
348,514
(+355 daily
increase)

*Sourced from the Australian Immunisation Register. Numbers are calculated as difference in daily cumulative reported numbers to allow for historical corrections.

Cumulative doses administered by channel

Data as at:
21 Jul 2022

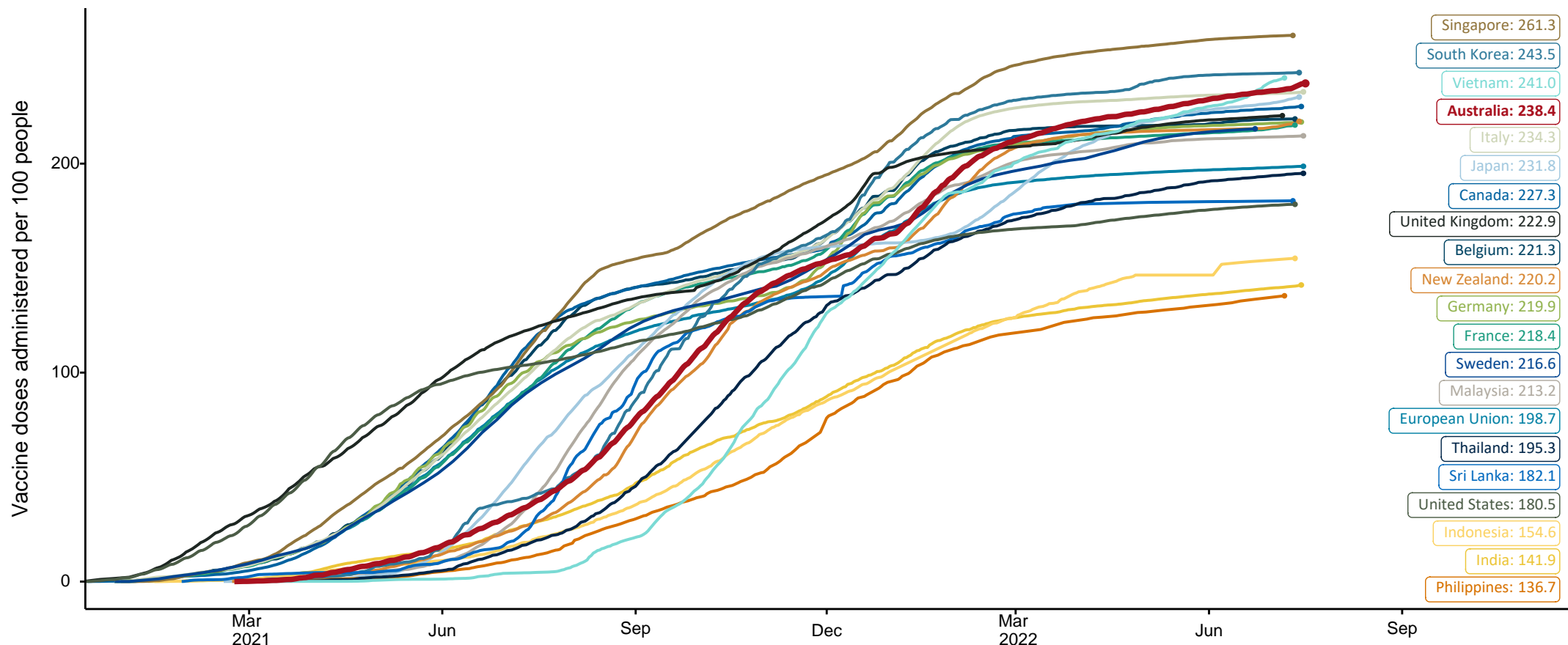


Source: Australian Immunisation Register

COVID-19 vaccine doses per 100, Australia and select countries

Data as at:
17 July 2022
Updated weekly

Australia's COVID-19
Vaccine Roadmap

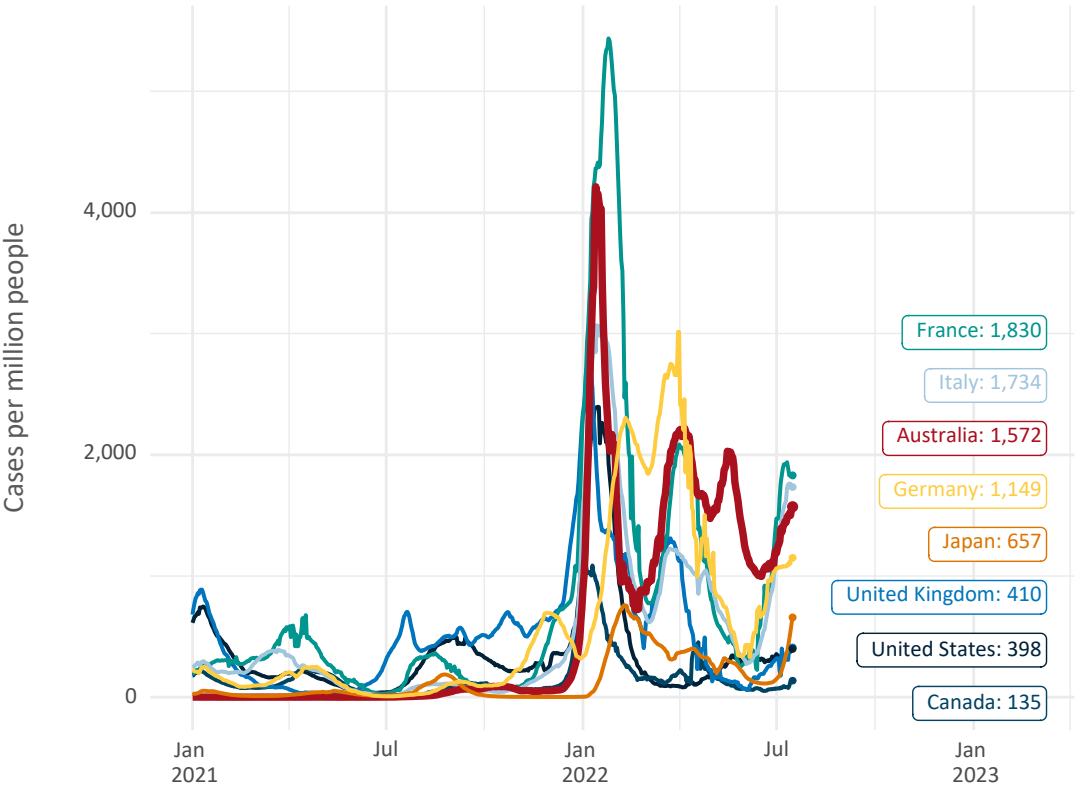


Note: From 11 January 2022, data for Australia includes all doses administered to people 5 and over. Prior to 11 January, data was for 12 and over.
Source: Department of Health (Australia), Our World in Data (international)
Latest data: 17 July

International data – COVID-19

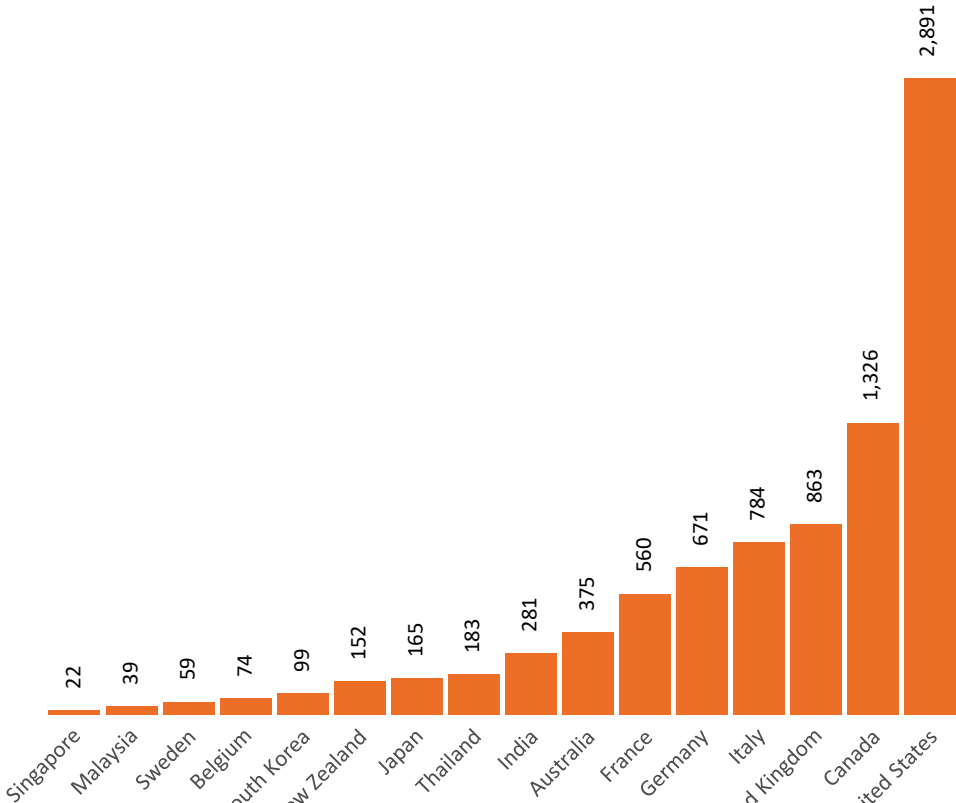
Data as at:
17 July 2022
Updated weekly

New daily cases per million since 2021, Australia and G7 countries
Smoothed - 7 day average



Source: OWID
Data downloaded: 18 Jul 2022 09:22
Latest data: 16 Jul 2022

COVID-19 deaths in past 7 days - Australia and select countries



Source: OWID
Data downloaded: 18 Jul 2022 09:22
Latest data: 16 Jul 2022