



Australian Government
Operation COVID Shield

COVID-19 Vaccine Roll-out

20 July 2022

Data as at:
19 Jul 2022

Total vaccine doses



61,471,230 total vaccine
doses administered nationally as at 19 July
+111,753 recorded in the last 24 hours



20,142,006

people have had at least one
dose

>95%

of people over the age of 16
have had at least one dose



19,802,082

people are fully vaccinated

>95%

of people over the age of 16 are
fully vaccinated



14,014,770

people over the age of 16
who have received three or
more doses

NSW
19,087,405
(+34,771 daily
increase)

VIC
16,084,905
(+27,332 daily
increase)

QLD
11,648,774
(+24,416 daily
increase)

WA
6,746,517
(+10,328 daily
increase)

TAS
1,397,956
(+2,564 daily
increase)

SA
4,290,505
(+8,170 daily
increase)

ACT
1,613,551
(+3,323 daily
increase)

NT
601,617
(+849 daily
increase)

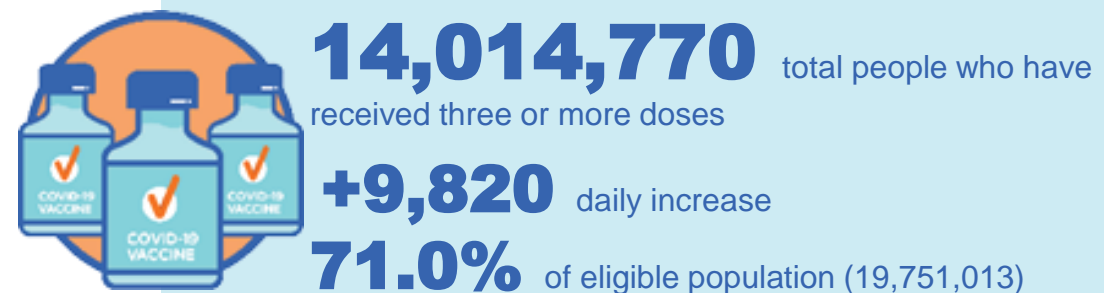
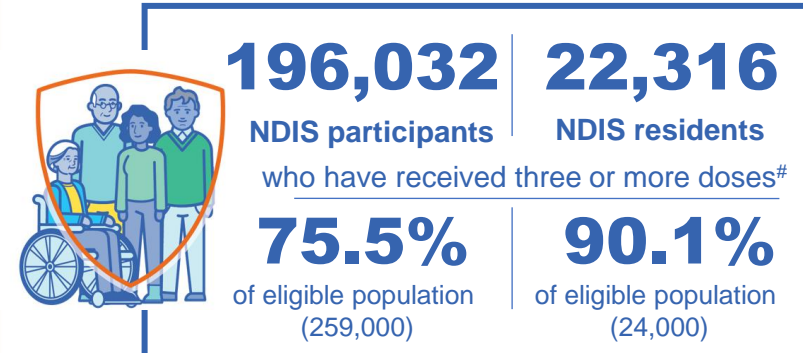
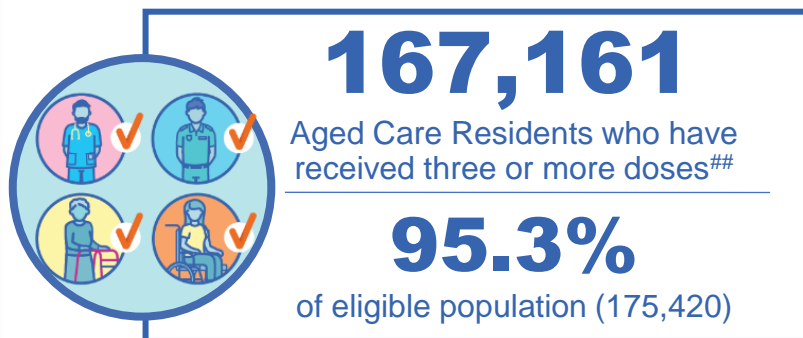
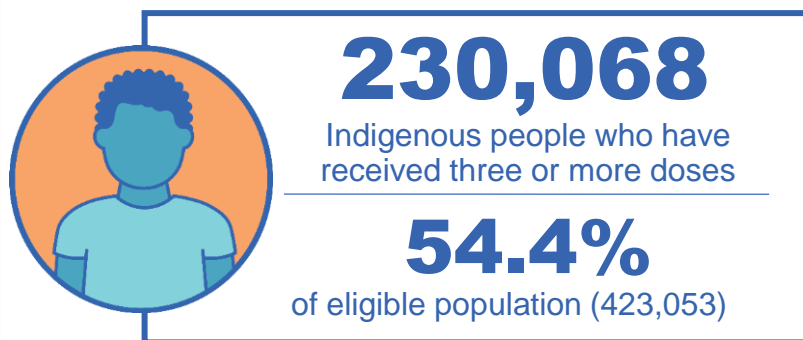
*Administration state breakdown indicates state in which a vaccine was administered

**Overall dose count includes instances of more than three doses per person in a small number of cases.

Source: Australian Immunisation Register

Booster Vaccinations

Data as at:
19 Jul 2022



	Number of People	Daily Increase	% of Eligible
NSW	4,283,814	3,258	68.7%
VIC	3,729,947	2,101	73.2%
QLD	2,433,766	2,308	64.0%
WA	1,711,765	656	82.9%
SA	1,005,709	806	74.7%
TAS	320,538	173	73.5%
ACT	276,115	138	79.4%
NT	132,036	59	78.3%

*People may belong to multiple groups and could be represented in the above breakdowns multiple times.
NDIS participants data as at 18 July 2022. ## Aged Care Residents data as at 19 July 2022.

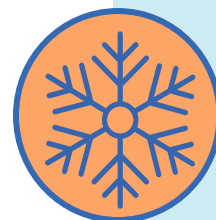
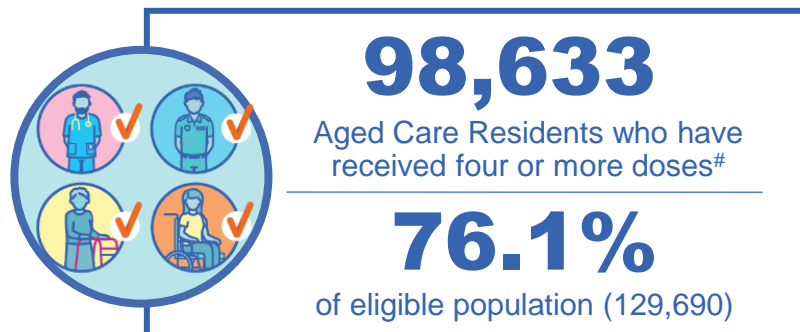
Source: Australian Immunisation Register

121,080 doses administered to persons
residing in other territories or with
missing residential information

Fourth Doses

Data as at:
19 Jul 2022

Australia's COVID-19
Vaccine Roadmap



3,314,823
96,634
28.9%
2,444,545
63.7%

total people (16+) who have received four doses

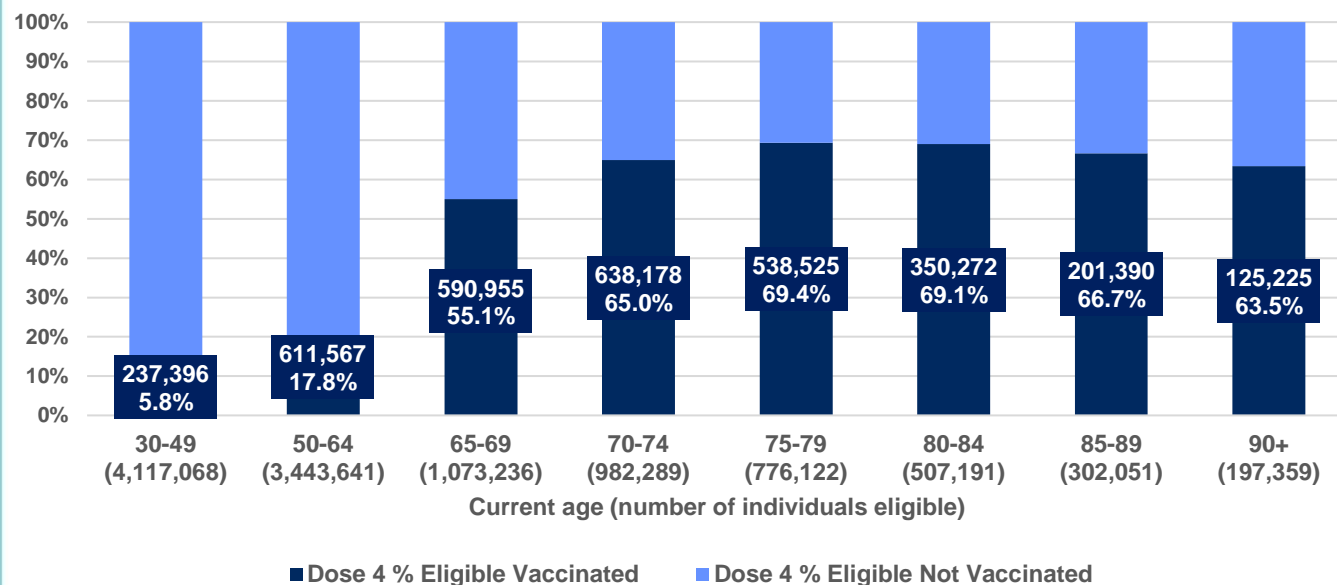
daily increase (16+)

of eligible population (30+) (11,398,957)

total people (65+) who have received four doses

of eligible population (65+) (3,838,248)

% Individuals eligible vaccinated by current age



	Number of People 16+	Daily Increase
ACT	64,084	2,271
NSW	1,065,024	29,756
NT	14,274	642
QLD	649,047	20,545
SA	268,553	7,148
TAS	90,760	2,239
VIC	812,546	24,216
WA	334,464	9,351

16,071

doses administered to persons residing in other territories or with missing residential information

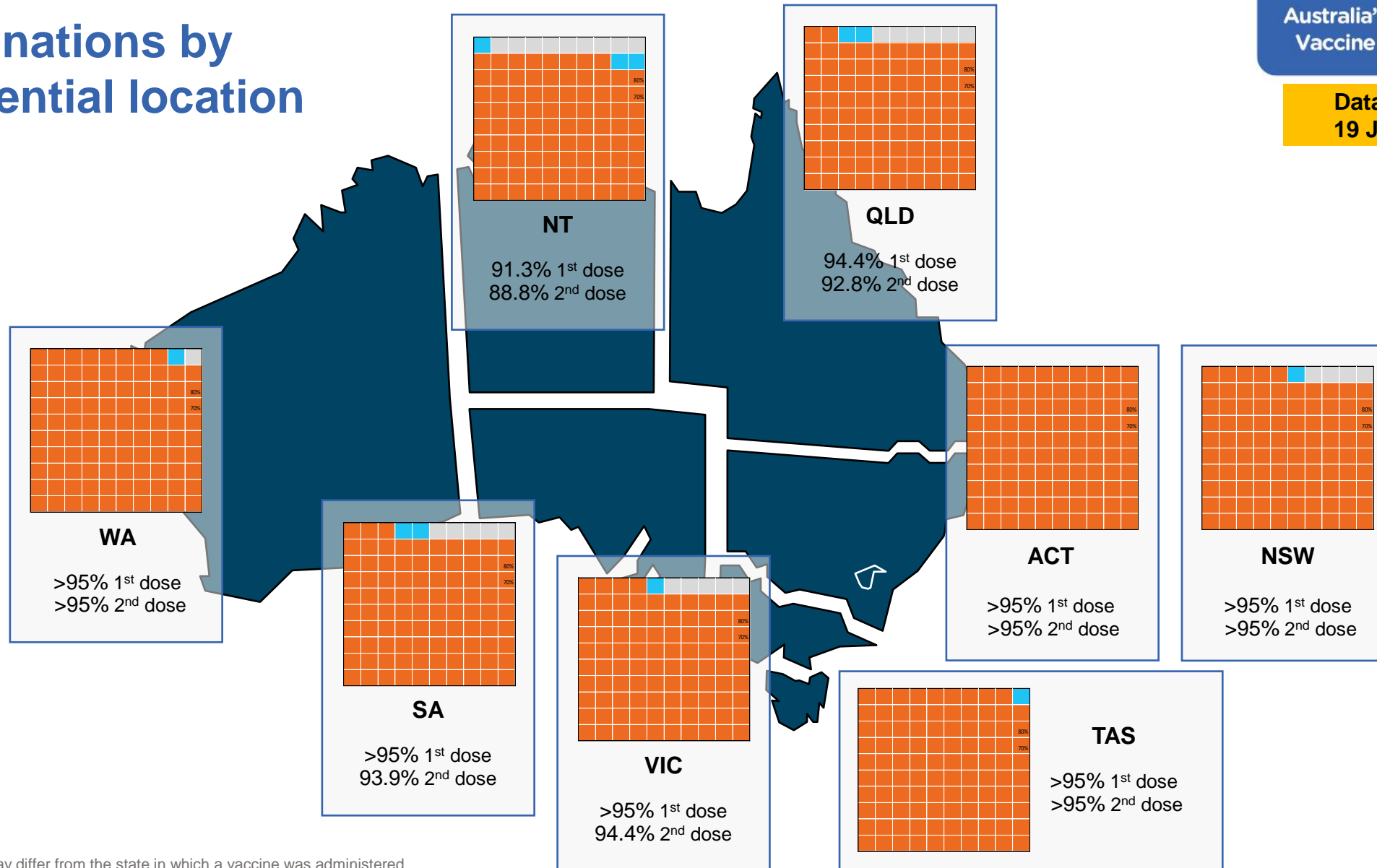
*People become eligible for a fourth dose three months after their third dose. Individuals may belong to multiple groups and could be represented in the above multiple times.
#Aged Care Residents data as at 18 July 2022.

Source: Australian Immunisation Register

Vaccinations by residential location

Australia's COVID-19
Vaccine Roadmap

Data as at:
19 Jul 2022



*Residential state may differ from the state in which a vaccine was administered

Commonwealth and Jurisdiction vaccine doses administered

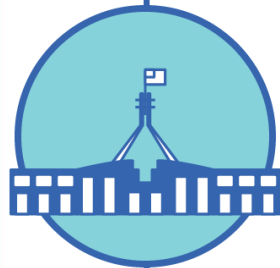
Data as at:
19 Jul 2022



61,471,230 total vaccine
doses administered nationally as at 19 July
+ 111,753 recorded in the last 24 hours



21,424,144
doses administered by state
and territory facilities
+ 10,665
recorded in the last 24 hours



40,047,086
doses administered by
commonwealth facilities
+ 101,088
recorded in the last 24 hours

38,724,043 total vaccine doses
administered in primary care settings
1,323,043 total vaccine doses
administered in aged care and disability
settings

NSW	Jurisdictions	Commonwealth
Cumulative	5,169,374	13,918,031
Daily increase	2,289	32,482

VIC	Jurisdictions	Commonwealth
Cumulative	6,155,815	9,929,090
Daily increase	2,991	24,341

QLD	Jurisdictions	Commonwealth
Cumulative	3,872,559	7,776,215
Daily increase	980	23,436

WA	Jurisdictions	Commonwealth
Cumulative	2,558,422	4,188,095
Daily increase	1,842	8,486

TAS	Jurisdictions	Commonwealth
Cumulative	636,227	761,729
Daily increase	550	2,014

SA	Jurisdictions	Commonwealth
Cumulative	1,866,140	2,424,365
Daily increase	1,176	6,994

ACT	Jurisdictions	Commonwealth
Cumulative	817,565	795,986
Daily increase	650	2,673

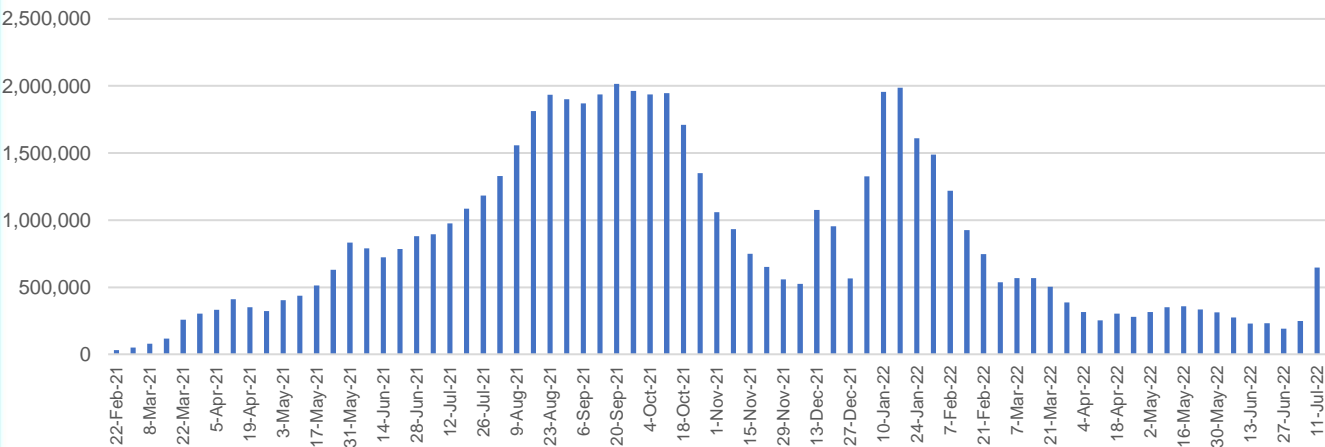
NT	Jurisdictions	Commonwealth
Cumulative	348,042	253,575
Daily increase	187	662

Vaccine milestone charts

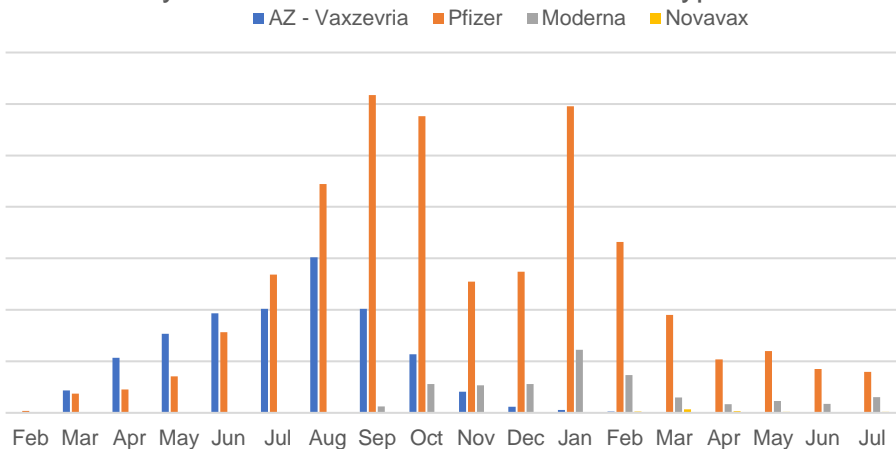
Data as at:
19 Jul 2022

Australia's COVID-19
Vaccine Roadmap

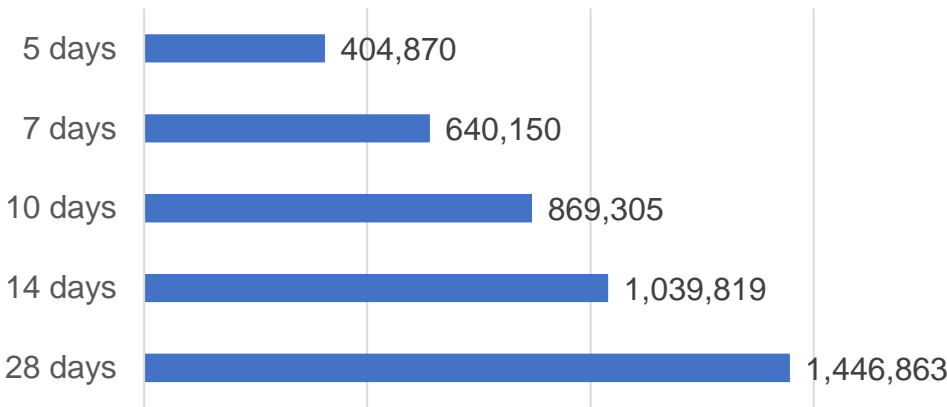
Doses Administered by Week



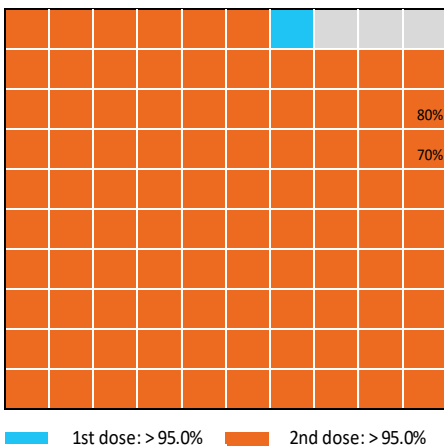
Doses by administration month and vaccine type



Doses Reported



Eligible population percentage coverage



*Each square represents 1% of the national population.
Squares are filled as milestones are achieved.

*Sourced from the Australian Immunisation Register.

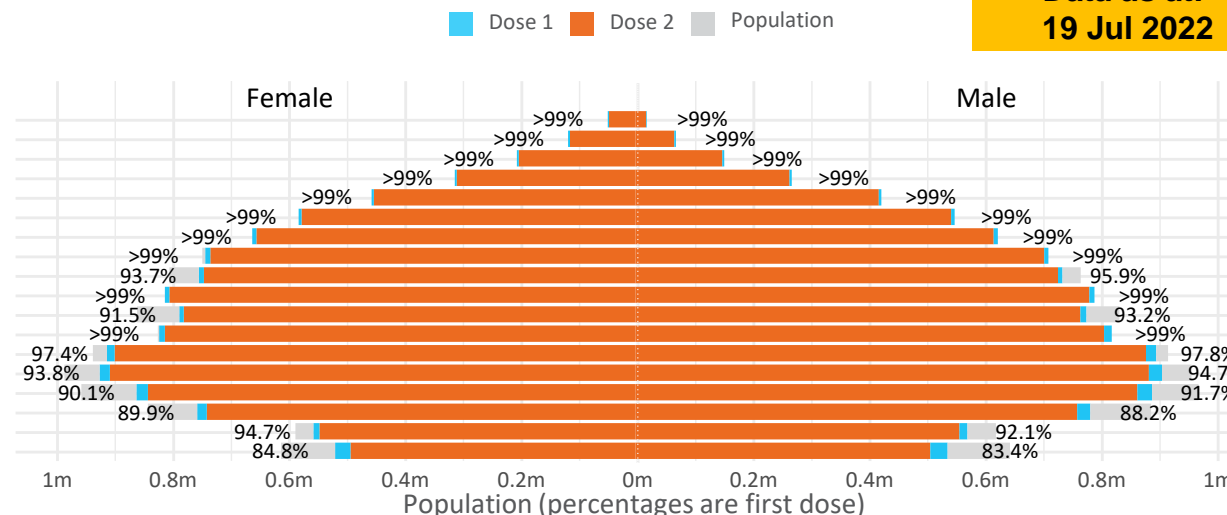
Data as at:
19 Jul 2022

Doses by age and sex

First and second doses by age and sex

	16+	50+	12-15	5-11
Dose 1	97.68% (20,142,006 doses / 20,619,959 people)	>99% (8,952,727 doses / 8,749,703 people)	84.11% (1,046,328 doses / 1,243,990 people)	52.28% (1,190,326 doses / 2,276,638 people)
Dose 2	96.03% (19,802,082 doses / 20,619,959 people)	>99% (8,843,329 doses / 8,749,703 people)	79.59% (990,093 doses / 1,243,990 people)	40.32% (917,970 doses / 2,276,638 people)

Age	Dose 1	Dose 2
95+	66,975 (>99%)	63,484 (>99%)
90-94	184,074 (>99%)	178,573 (>99%)
85-89	354,032 (>99%)	347,268 (>99%)
80-84	575,362 (>99%)	568,171 (>99%)
75-79	870,693 (>99%)	862,066 (>99%)
70-74	1,121,201 (>99%)	1,109,558 (>99%)
65-69	1,274,633 (>99%)	1,259,356 (>99%)
60-64	1,441,549 (>99%)	1,424,662 (>99%)
55-59	1,475,983 (94.9%)	1,459,065 (93.8%)
50-54	1,588,225 (>99%)	1,571,126 (>99%)
45-49	1,550,130 (92.5%)	1,531,664 (91.3%)
40-44	1,629,238 (>99%)	1,605,164 (>99%)
35-39	1,796,272 (97.9%)	1,763,859 (96.1%)
30-34	1,821,514 (94.7%)	1,779,206 (92.5%)
25-29	1,744,196 (91.5%)	1,695,959 (89.0%)
20-24	1,530,634 (89.4%)	1,489,779 (87.0%)
16-19	1,117,295 (93.4%)	1,093,122 (91.4%)
12-15	1,046,328 (84.1%)	990,093 (79.6%)

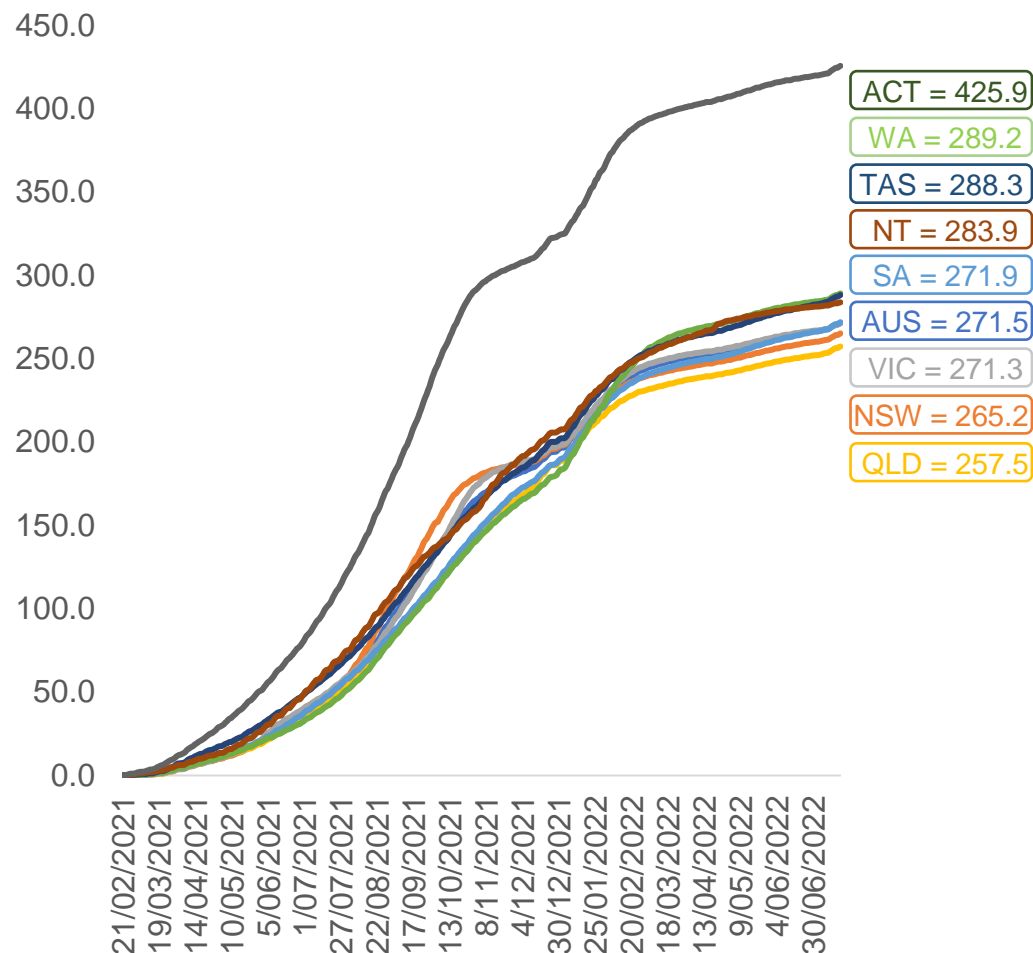


	AUS	ACT	NSW	NT	QLD	SA	TAS	VIC	WA
16 and over - dose 1	20,142,006	353,934	6,352,862	173,979	3,881,565	1,381,522	446,548	5,182,756	2,104,077
16 and over - dose 2	19,802,082	348,134	6,253,095	169,283	3,817,534	1,352,124	437,548	5,103,208	2,072,735
16 and over - population	20,619,959*	344,037	6,565,651	190,571	4,112,707	1,440,400	440,172	5,407,574	2,114,978
16 and over % with dose 1	97.68%	>99%	96.76%	91.29%	94.38%	95.91%	>99%	95.84%	>99%
16 and over % with dose 2	96.03%	>99%	95.24%	88.83%	92.82%	93.87%	>99%	94.37%	98.00%
5 to 11 - dose 1	1,190,326	31,718	356,477	13,090	205,968	83,431	28,384	324,033	139,739
5 to 11 - dose 2	917,970	27,639	282,391	8,850	152,480	64,815	23,353	249,894	103,928
5 to 11 - population	2,276,638	39,789	716,460	24,750	478,731	148,816	45,033	578,499	244,154
5 to 11 % with dose 1	52.28%	79.72%	49.76%	52.89%	43.02%	56.06%	63.03%	56.01%	57.23%
5 to 11 % with dose 2	40.32%	69.46%	39.41%	35.76%	31.85%	43.55%	51.86%	43.20%	42.57%
12 to 15 - dose 1	1,046,328	20,133	321,996	10,688	204,905	68,046	22,754	273,410	115,283
12 to 15 - dose 2	990,093	19,574	307,669	9,620	191,258	64,297	21,639	261,455	106,685
12 to 15 - population	1,243,990	19,693	390,330	13,060	270,146	82,747	26,308	308,611	132,869
12 to 15 % with dose 1	84.11%	>99%	82.49%	81.84%	75.85%	82.23%	86.49%	88.59%	86.76%
12 to 15 % with dose 2	79.59%	>99%	78.82%	73.66%	70.80%	77.70%	82.25%	84.72%	80.29%

*National population will not equal sum of listed jurisdictions due to a small number of people counted in national population residing in some 'other' territories. Sum of state doses will not add to national total as some records are unable to be geocoded to a State or Territory.
Doses sourced from Australian Immunisation Register, population from ABS ERP June 2020

Vaccinations by location

Cumulative total doses administered vs eligible state populations*

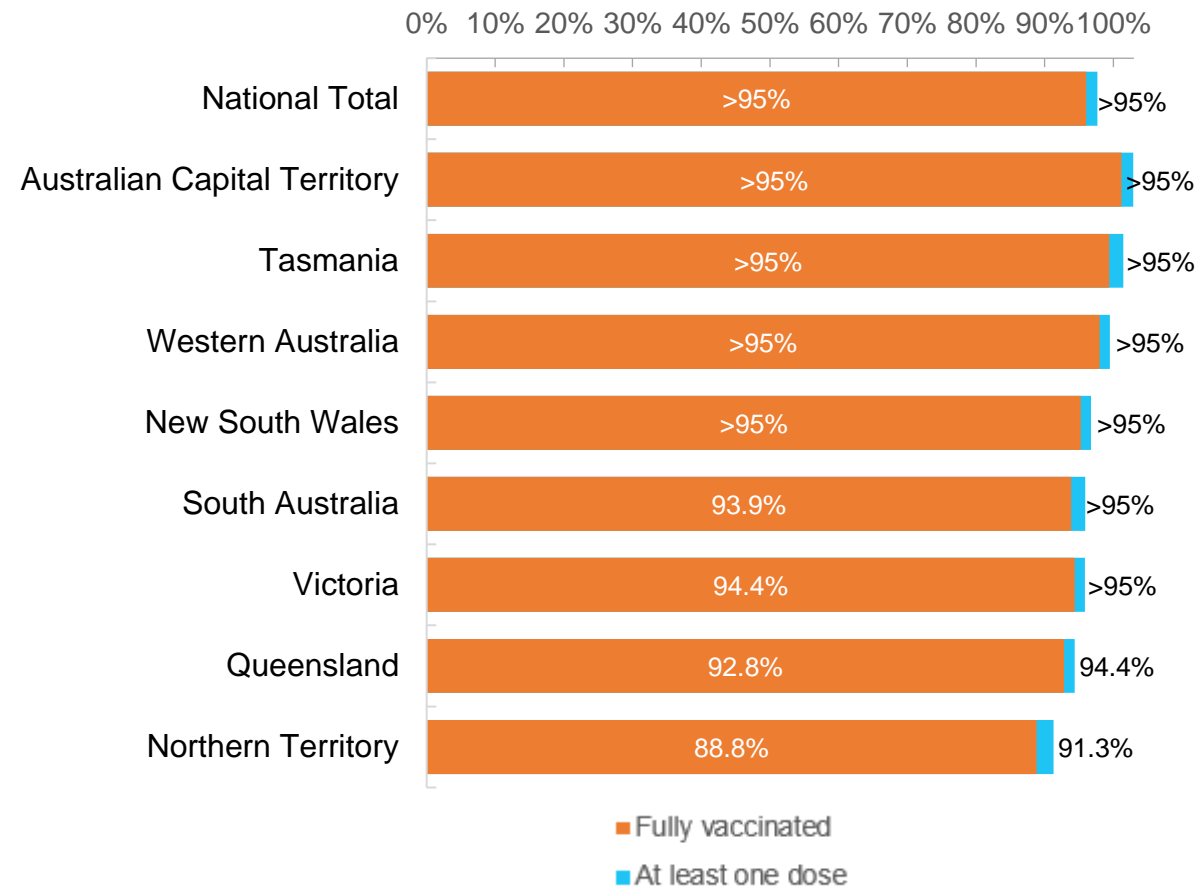


*Not an indication of percentage vaccinated, numbers will exceed 100 due to multiple doses required per person of the population. All doses are included for those aged 12 and above, and are based on vaccination provider location.

Data as at:
19 Jul 2022

Australia's COVID-19
Vaccine Roadmap

First and Second Doses by residential location



Aboriginal and Torres Strait Islander peoples

Number of people vaccinated

Data as at:
19 Jul 2022
Updated weekly

Australia's COVID-19
Vaccine Roadmap



444,934

people over the age of 16
have had at least one dose

85.0%

of people over the age of 16
have had at least one dose



426,725

people over the age of 16
are fully vaccinated

81.6%

of people over the age of 16 are
fully vaccinated



People aged 12 – 15 years

47,690

41,787

67.6%

At least one dose

59.2%

Fully vaccinated

178 Aboriginal community controlled health services (ACCHS)

0#

50

27

44

12

3

21

21

ACT

NSW

NT

QLD

SA

TAS

VIC

WA

Medicare Address State ^{##}	Individuals Dose 1	Individuals Dose 1 %	Individuals Dose 2	Individuals Dose 2 %
Australian Capital Territory	4,805	91.9%	4,685	89.6%
New South Wales	136,562	87.3%	133,513	85.4%
Northern Territory	41,236	89.8%	39,300	85.6%
Queensland	116,939	81.9%	111,619	78.2%
South Australia	20,124	80.7%	18,750	75.2%
Tasmania	13,922	88.9%	13,524	86.3%
Victoria	35,819	90.5%	35,026	88.5%
Western Australia	53,853	86.8%	50,274	81.0%
Unknown/Other Territories	21,674	70.6%	20,034	65.3%
Totals	444,934	85.0%	426,725	81.6%

Source: Australian Immunisation Register

*Identifying as Aboriginal and Torres Strait Islander is optional and the estimated population may be under reported.

**Includes all Aboriginal and Torres Strait Islander peoples who have received a vaccination, not limited to those administered in an ACCHS setting

#ACCHS in the ACT are currently operating as a Commonwealth Vaccine Clinics so not included to avoid double counting

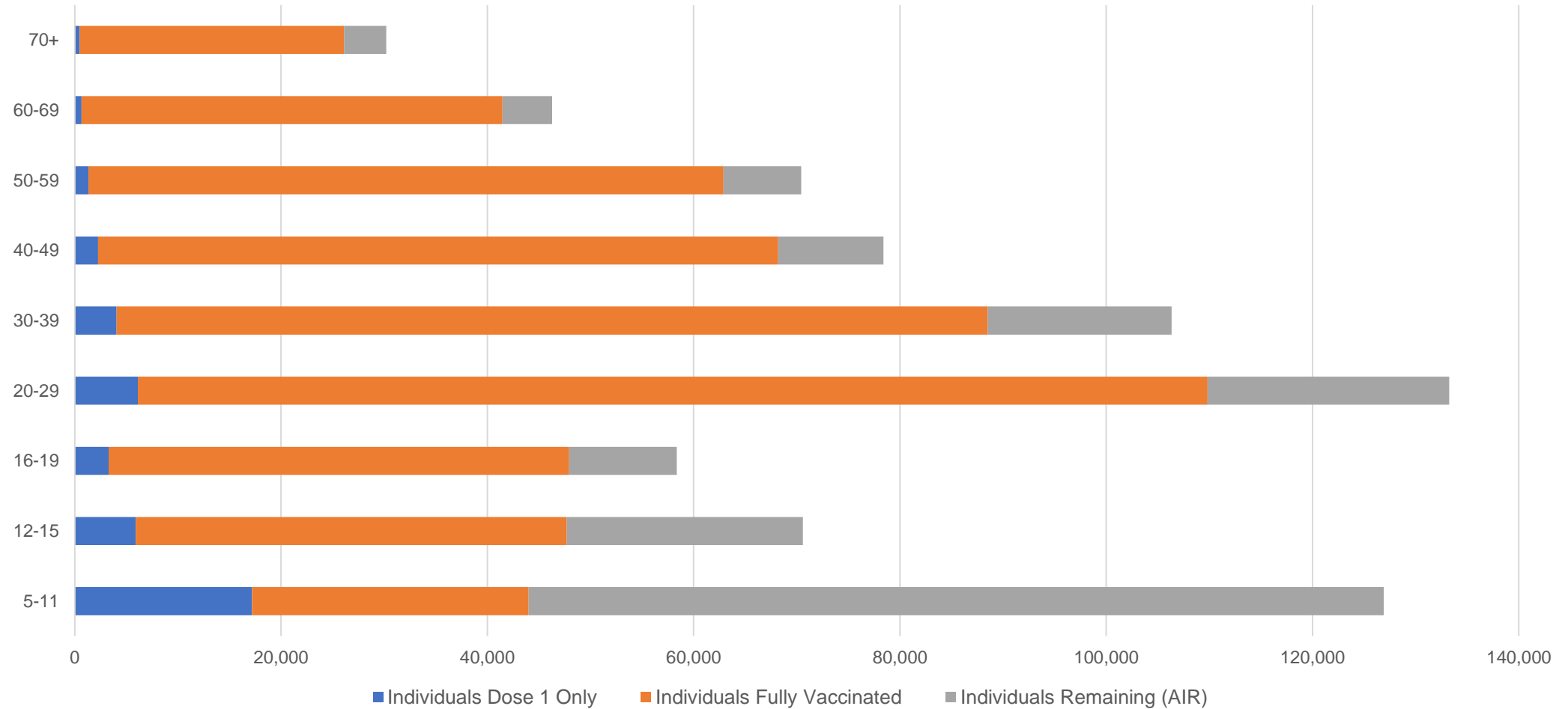
##The above table includes all identified Aboriginal and Torres Strait Islander people who are aged 16 and above by their state of residence.

Aboriginal and Torres Strait Islander peoples

Number of people vaccinated by age

Data as at:
19 Jul 2022
Updated weekly

Australia's COVID-19
Vaccine Roadmap



Source: Australian Immunisation Register

Commonwealth primary care

Data as at:
19 Jul 2022

Australia's COVID-19
Vaccine Roadmap



Primary care vaccine administration sites

5,694	123	178	3,617
GPs	CVCs	ACCHS	Pharmacies



38,724,043 total vaccine doses administered
primary care settings as at 19 July
+ 100,624 recorded in the last 24 hours

Primary care vaccinations by provider type

	Doses administered	Daily increase	7 day increase
General Practice* includes other Commonwealth	30,659,480	54,105	290,250
Pharmacy	8,064,563	46,519	277,485

NSW
13,344,267
(+32,375 daily increase)

VIC
9,596,175
(+24,220 daily increase)

QLD
7,487,063
(+22,687 daily increase)

WA
4,046,535
(+8,548 daily increase)

TAS
740,934
(+1,979 daily increase)

SA
2,342,886
(+6,968 daily increase)

ACT
617,764
(+2,486 daily increase)

NT
226,841
(+557 daily increase)

321,578

doses administered to persons
residing in other territories or with
missing residential information

*General practice includes Commonwealth Vaccination Clinics, Aboriginal Community Health Centres, Royal Flying Doctor Service and other Commonwealth vaccination facilities

Source: Australian Immunisation Register

Data as at:
19 Jul 2022

Commonwealth aged care and disability doses administered



1,323,043 (+ 464 last 24 hours)

Total vaccine doses administered in aged care and disability facilities as at 19 July

Number of doses administered as part of the Commonwealth aged and disability care rollout

NSW
572,888
(**<10** daily increase)

VIC
248,344
(**+98** daily increase)

QLD
210,824
(**+73** daily increase)

WA
113,093
(**+92** daily increase)

TAS
23,728
(**<10** daily increase)

SA
86,559
(**<10** daily increase)

ACT
17,964
(**<10** daily increase)

NT
7,698
(**<10** daily increase)

41,945

doses administered to persons
residing in other territories or with
missing residential information

*Sourced from the Australian Immunisation Register. Includes all persons vaccinated at participating residential aged care, disability and related industry settings.

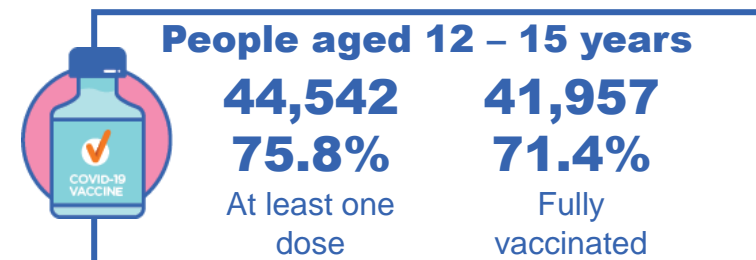
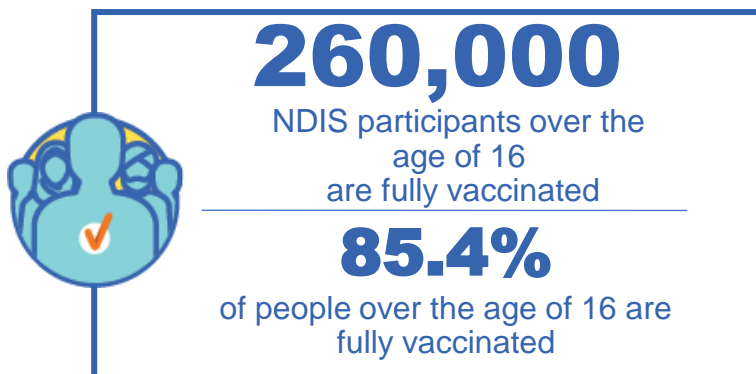
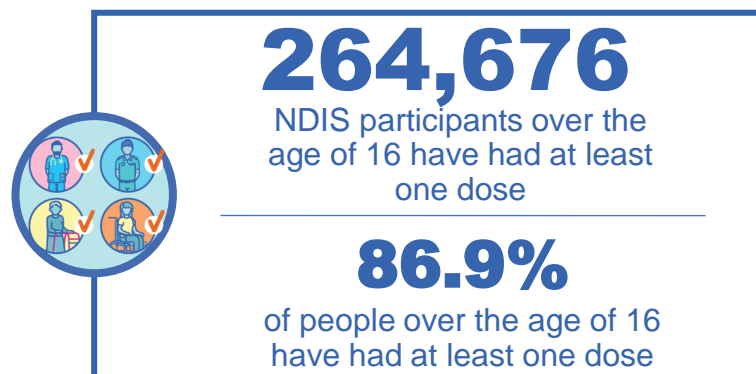
**State level breakdown indicates the residential location and may not align to the state in which the vaccination occurred.

Source: Australian Immunisation Register

National Disability Insurance Scheme (NDIS) reported vaccinations

Data as at:
14 July 2022
Updated weekly

Australia's COVID-19
Vaccine Roadmap



NDIS participant vaccinations

	People aged 16+ with at least one dose	People aged 16+ fully vaccinated	% People aged 16+ with at least one dose	% People aged 16+ fully vaccinated
ACT	4,971	4,909	89.0%	87.9%
NSW	80,935	79,680	87.5%	86.1%
NT	2,295	2,226	77.6%	75.3%
QLD	52,594	51,599	85.1%	83.5%
SA	21,694	21,201	84.6%	82.7%
TAS	6,619	6,467	87.2%	85.2%
VIC	70,267	69,110	88.1%	86.6%
WA	25,301	24,808	88.2%	86.5%
National	264,676	260,000	86.9%	85.4%

Source: Linkage between National Disability Insurance Agency data and the Australian Immunisation Register. Total NDIS participant numbers as at 30 June. Australian Immunisation Register data as at 13 July. Includes all participants regardless of residence type.

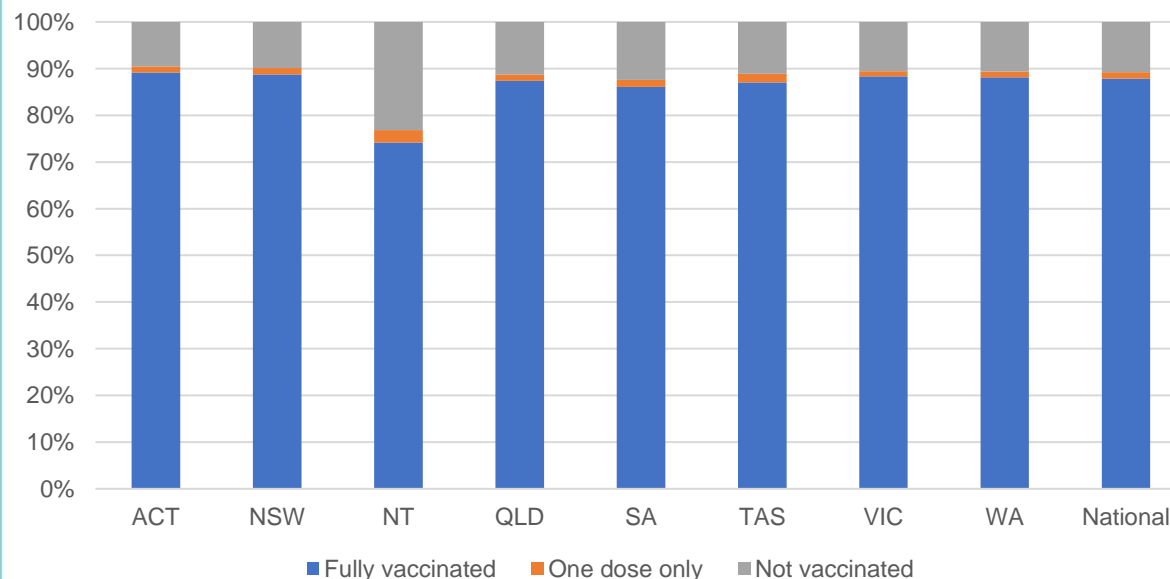
National Disability Insurance Scheme (NDIS) reported vaccinations

Data as at:
14 July 2022
Updated weekly

Australia's COVID-19
Vaccine Roadmap

NATIONAL	Total people with at least one dose	People fully vaccinated	Total number of individuals in cohort	% People with at least one dose	% People fully vaccinated
NDIS participants living in disability accommodation	21,273	20,955	23,858	89.2%	87.8%

NDIS participants in disability and aged care accommodation



Source: Linkage between National Disability Insurance Agency data and the Australian Immunisation Register. Includes participants residing in disability accommodation only.

Source: Total NDIS participant numbers as at 30 June. Participant data as at 12 July. Australian Immunisation Register data as at 13 July. Worker data as at 14 July.

NDIS workforce vaccinations

	NDIS workers with at least one dose	NDIS workers fully vaccinated	% NDIS workers with at least one dose	% NDIS workers fully vaccinated
NSW	128,234	123,322	98.3%	94.6%
VIC	117,646	114,405	98.5%	95.8%
QLD	71,568	70,714	97.9%	96.7%
WA	34,532	33,143	98.9%	95.0%
SA	35,309	33,574	98.5%	93.7%
TAS	12,410	12,025	98.5%	95.4%
ACT	12,343	12,316	99.8%	99.6%
NT	3,967	3,819	99.6%	95.9%
TOTAL	416,009	403,318	98.4%	95.4%

Source: the NDIS Commission has established a requirement for registered NDIS providers who provide intensive disability support services to report on the vaccination status of workers they employ, or otherwise engage, to deliver NDIS-funded supports and services, and who are required to be vaccinated in accordance with in-force state and territory public health orders. The statistics reflect data reported to the NDIS Commission by registered NDIS providers and should be considered indicative and subject to change

Note: Some registered NDIS providers are yet to report on the vaccination status of their workforce. The NDIS Commission is working with those providers around reporting requirements.

Remaining workers not included include those exempt from vaccination requirements, workers whose vaccination status is not yet verified by the provider (such as workers on leave) and provider reporting anomalies.

Residential aged care vaccination rollout

Residential aged care facilities status

175,388

People fully vaccinated

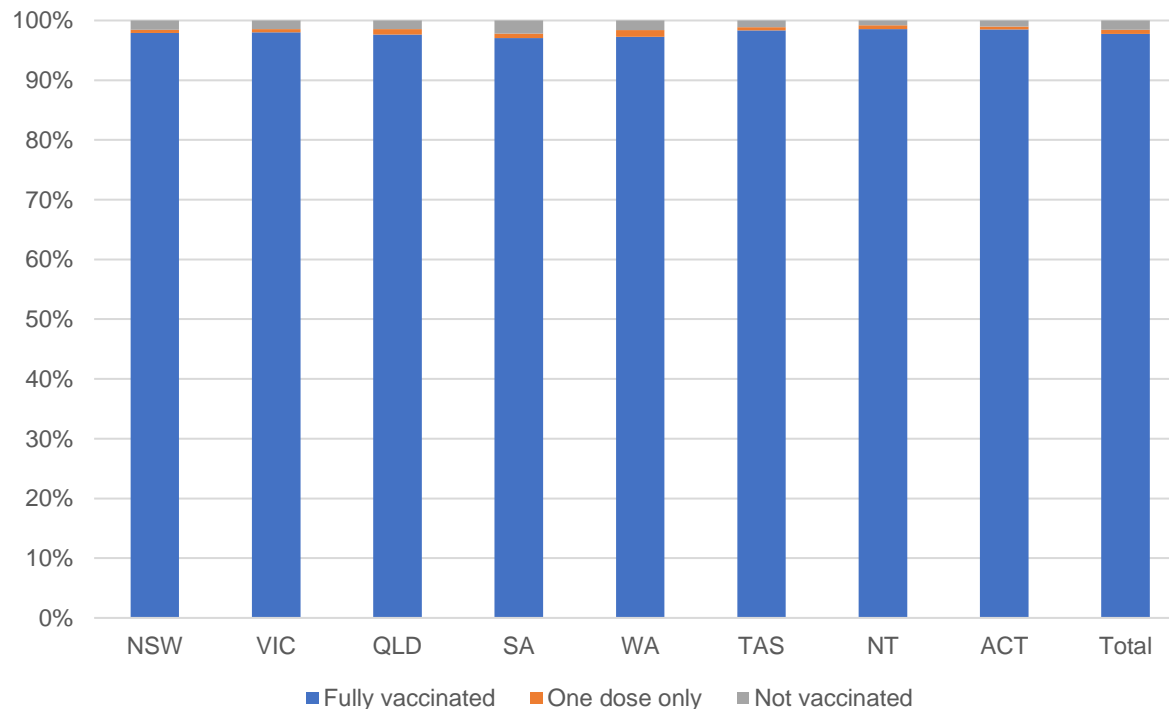
176,630

People with at least one dose

Australia's COVID-19 Vaccine Roadmap

Data as at:
14 July 2022
Updated weekly

Aged care resident vaccinations



Aged care worker vaccinations

Jurisdictions	Total workers with at least one dose	Workers fully vaccinated	% Workers with at least one dose	% Workers fully vaccinated
NSW	77,174	77,049	99.9%	99.7%
VIC	70,741	70,739	100.0%	100.0%
QLD	48,729	48,716	100.0%	100.0%
SA	26,657	26,647	100.0%	100.0%
WA	24,860	24,855	100.0%	100.0%
TAS	7,546	7,546	100.0%	100.0%
NT	925	925	100.0%	100.0%
ACT	2,965	2,965	100.0%	100.0%
Total	259,597	259,442	100.0%	99.9%

Source: Residential aged care provider self-reported COVID-19 vaccination information

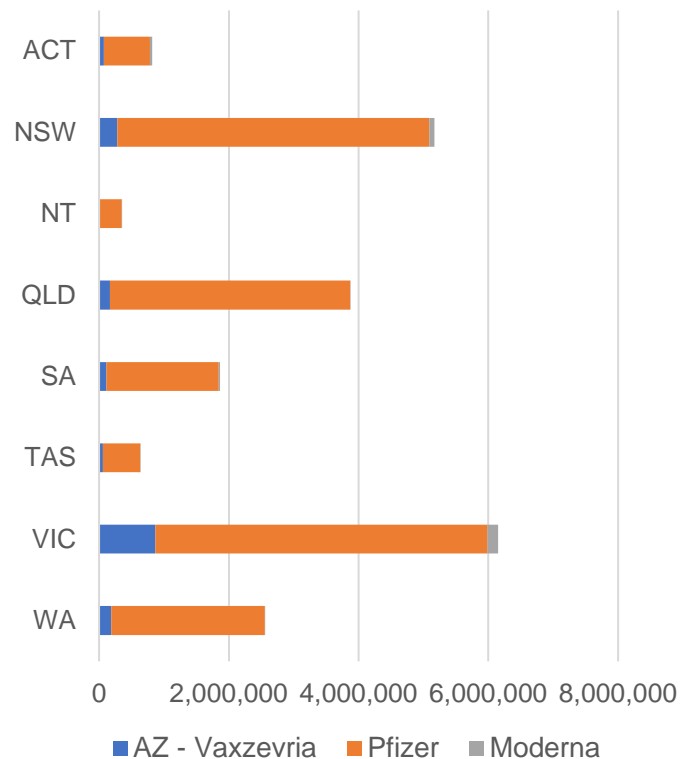
*Status updates are provided by facilities at least once per week. Reporting is updated Monday to Friday to encompass different facility updates being made on different days.

Data is sourced directly from Aged Care Service Providers and is not drawn or closely aligned with data from AIR due to inconsistencies and potential lags in uploading of records.

Data as at:
19 Jul 2022

Jurisdiction administered

Total vaccine doses administered in State and Territory clinics as at 19 July



21,424,144 total vaccine doses administered
in State and Territory clinics as at 19 July
+ **10,665** recorded in the last 24 hours
+ **70,061** recorded in the last 7 days

NSW
5,169,374
(+2,289 daily
increase)

VIC
6,155,815
(+2,991 daily
increase)

QLD
3,872,559
(+980 daily
increase)

WA
2,558,422
(+1,842 daily
increase)

TAS
636,227
(+550 daily
increase)

SA
1,866,140
(+1,176 daily
increase)

ACT
817,565
(+650 daily
increase)

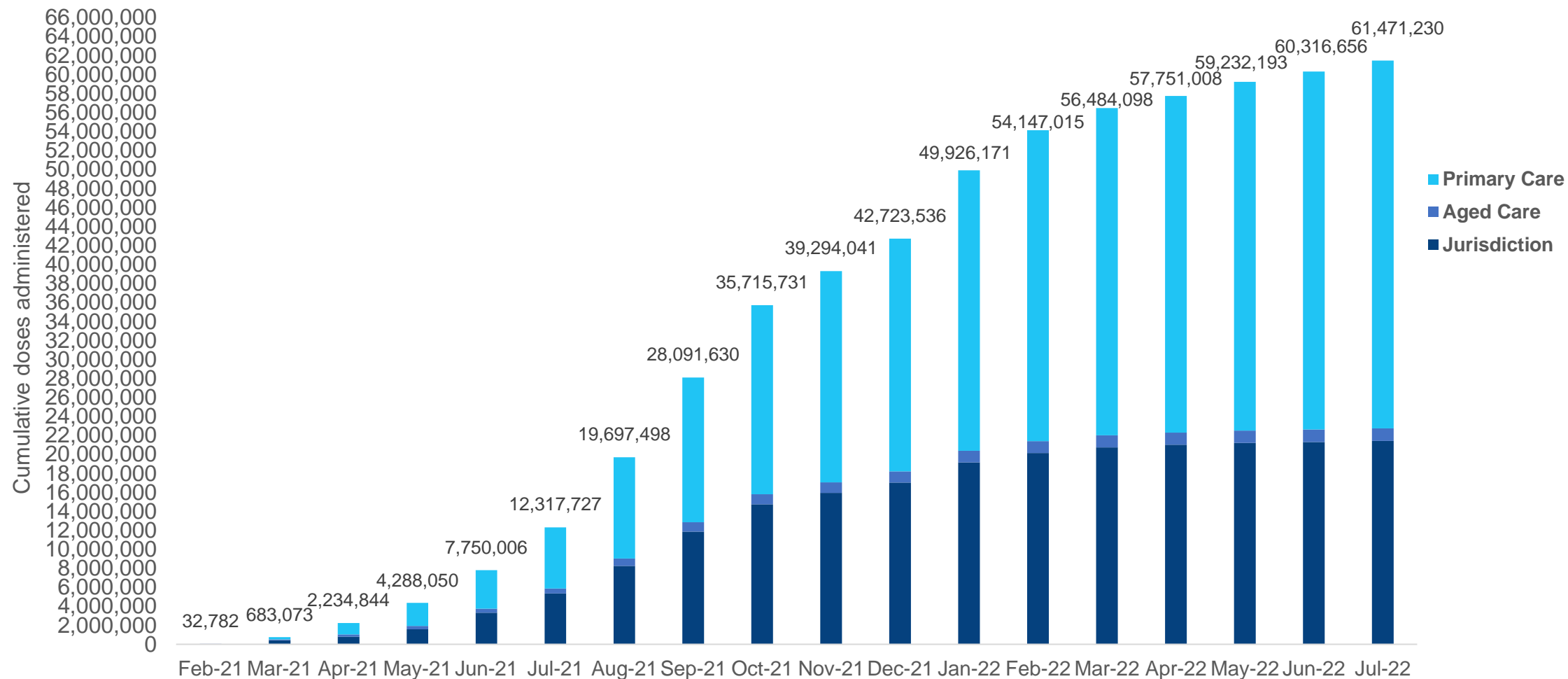
NT
348,042
(+187 daily
increase)

*Sourced from the Australian Immunisation Register. Numbers are calculated as difference in daily cumulative reported numbers to allow for historical corrections.

Source: Australian Immunisation Register

Cumulative doses administered by channel

Data as at:
19 Jul 2022

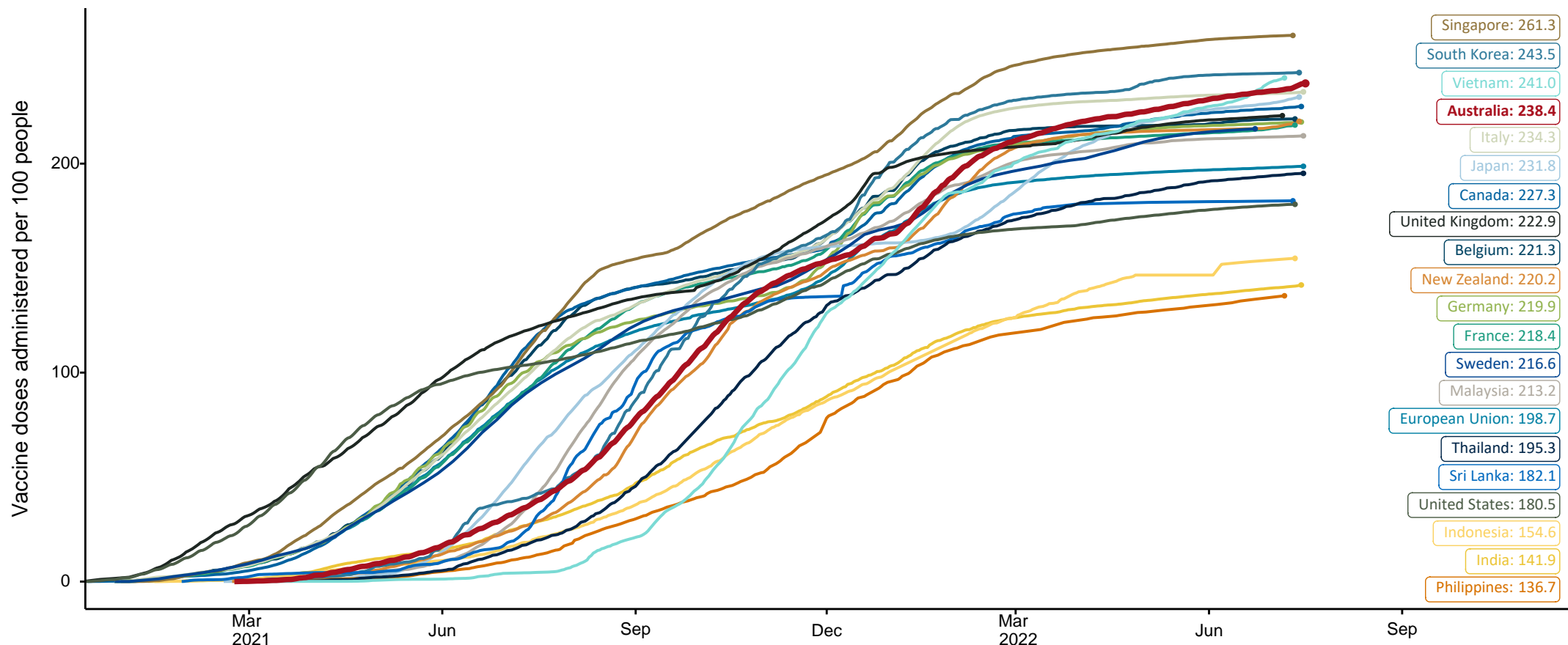


Source: Australian Immunisation Register

COVID-19 vaccine doses per 100, Australia and select countries

Data as at:
17 July 2022
Updated weekly

Australia's COVID-19
Vaccine Roadmap

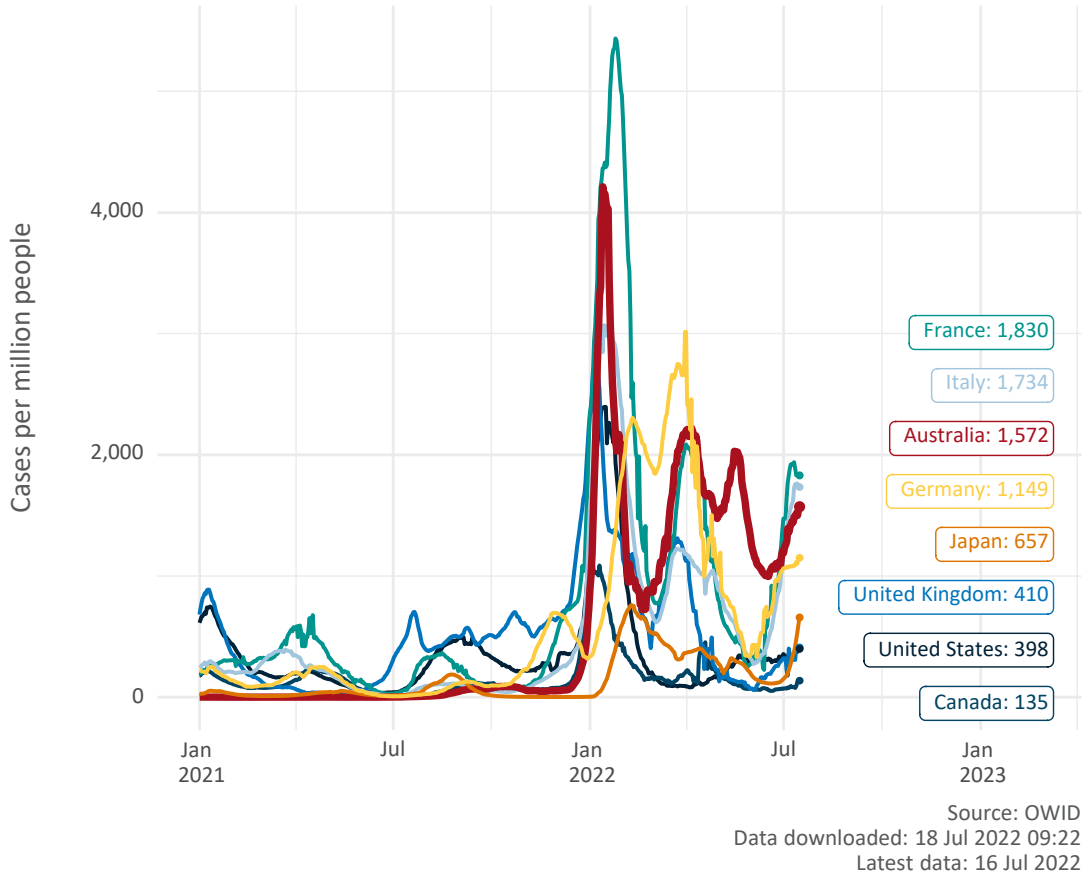


Note: From 11 January 2022, data for Australia includes all doses administered to people 5 and over. Prior to 11 January, data was for 12 and over.
Source: Department of Health (Australia), Our World in Data (international)
Latest data: 17 July

International data – COVID-19

Data as at:
17 July 2022
Updated weekly

New daily cases per million since 2021, Australia and G7 countries
Smoothed - 7 day average



COVID-19 deaths in past 7 days - Australia and select countries

