



**Australian Government**  
**Operation COVID Shield**

# COVID-19 Vaccine Roll-out

02 July 2022

Data as at:  
01 Jul 2022

## Total vaccine doses



**60,347,909** total vaccine  
doses administered nationally as at 01 July  
**+31,253** recorded in the last 24 hours



**20,114,098**

people have had at least one  
dose

**>95%**

of people over the age of 16  
have had at least one dose



**19,777,446**

people are fully vaccinated

**>95%**

of people over the age of 16 are  
fully vaccinated



**13,896,308**

people over the age of 16  
who have received three or  
more doses

**NSW**  
**18,724,891**  
(+9,704 daily  
increase)

**VIC**  
**15,824,778**  
(+6,904 daily  
increase)

**QLD**  
**11,412,093**  
(+6,750 daily  
increase)

**WA**  
**6,634,606**  
(+2,952 daily  
increase)

**TAS**  
**1,370,252**  
(+770 daily  
increase)

**SA**  
**4,203,007**  
(+2,905 daily  
increase)

**ACT**  
**1,582,291**  
(+1,119 daily  
increase)

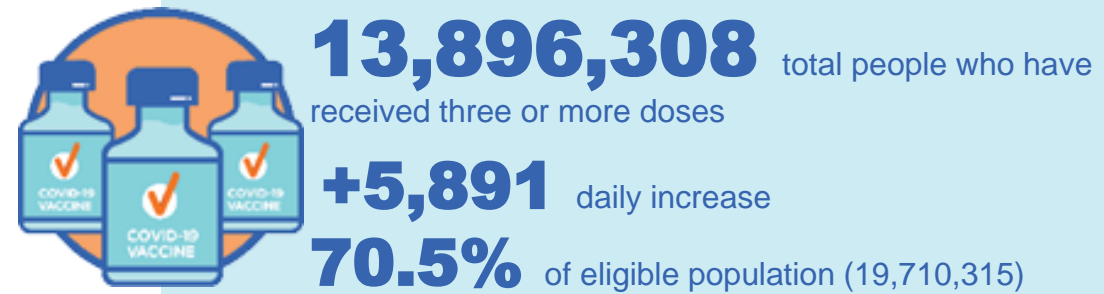
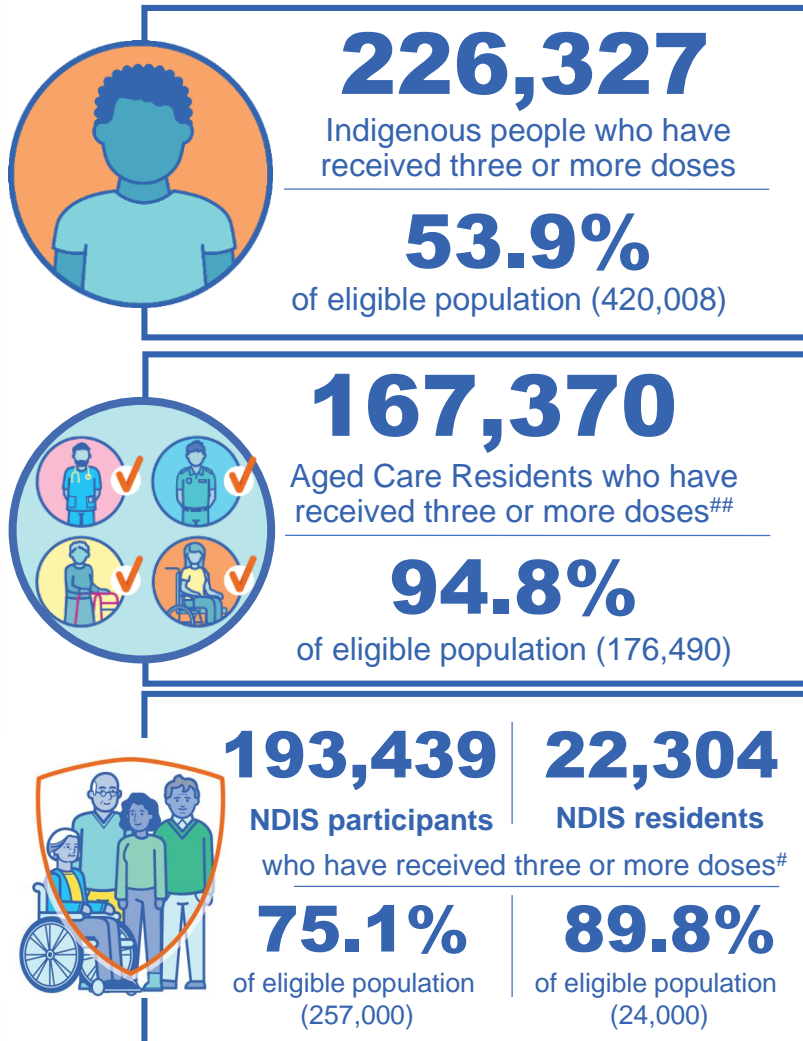
**NT**  
**595,991**  
(+149 daily  
increase)

\*Administration state breakdown indicates state in which a vaccine was administered

\*\*Overall dose count includes instances of more than three doses per person in a small number of cases.

Source: Australian Immunisation Register

## Booster Vaccinations



Data as at:  
01 Jul 2022

	Number of People	Daily Increase	% of Eligible
NSW	4,241,220	1,801	68.1%
VIC	3,704,499	1,446	72.8%
QLD	2,408,224	1,246	63.5%
WA	1,703,589	516	82.8%
SA	995,368	652	74.1%
TAS	317,983	182	73.0%
ACT	274,312	100	79.0%
NT	131,536	26	78.1%

\*People may belong to multiple groups and could be represented in the above breakdowns multiple times.  
# NDIS participants data as at 29 June 2022. ## Aged Care Residents data as at 01 July 2022.

Source: Australian Immunisation Register

**119,577** doses administered to persons residing in other territories or with missing residential information

# Winter / Fourth Doses

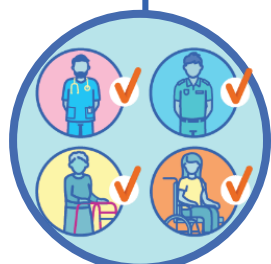
Data as at:  
01 Jul 2022

Australia's COVID-19  
Vaccine Roadmap



**2,384,333** total people (16+) who have received four or more doses

**+21,468** daily increase



**2,101,688**

People aged 65+ who have received  
four or more doses

**59.1%**

of eligible population (3,558,855)



**90,316**

Aged Care Residents who have  
received four or more doses<sup>#</sup>

**65.7%**

of eligible population (137,375)

	Number of People 16+	Daily Increase
ACT	45,749	386
NSW	771,874	6,881
NT	10,337	75
QLD	453,865	4,676
SA	194,593	1,970
TAS	67,004	569
VIC	591,699	4,539
WA	237,540	2,244

**11,672** doses administered to persons  
residing in other territories or with  
missing residential information

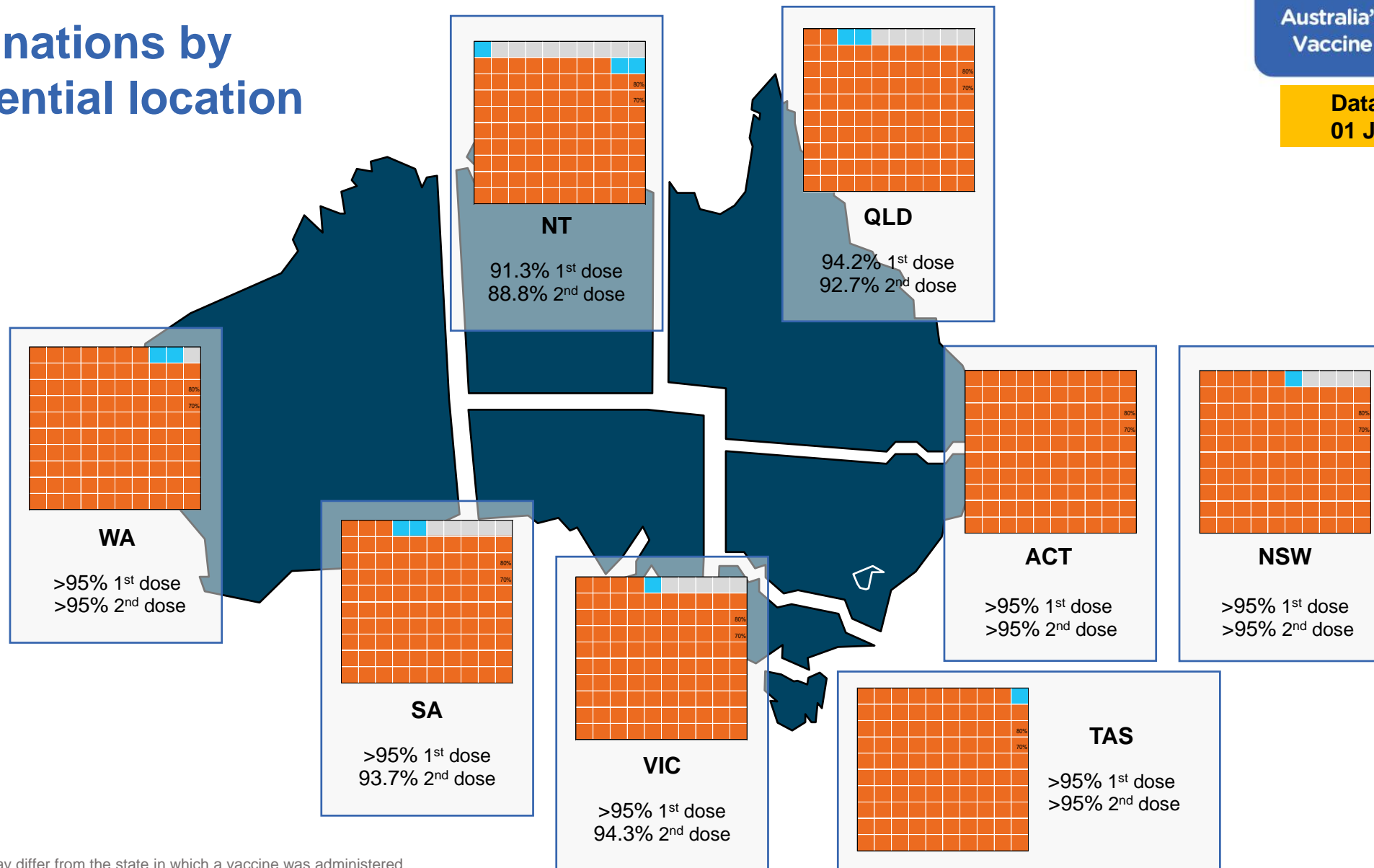
\*People become eligible for a winter booster four months after their third dose. Individuals may belong to multiple groups and could be represented in the above multiple times.  
<sup>#</sup>Aged Care Residents data as at 30 June 2022.

Source: Australian Immunisation Register

# Vaccinations by residential location

Australia's COVID-19  
Vaccine Roadmap

Data as at:  
01 Jul 2022



\*Residential state may differ from the state in which a vaccine was administered

# Commonwealth and Jurisdiction vaccine doses administered

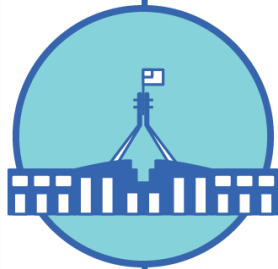
Data as at:  
01 Jul 2022



**60,347,909** total vaccine  
doses administered nationally as at 01 July  
**+ 31,253** recorded in the last 24 hours



**21,308,140**  
doses administered by state  
and territory facilities  
**+ 2,091**  
recorded in the last 24 hours



**39,039,769**  
doses administered by  
commonwealth facilities  
**+ 29,162**  
recorded in the last 24 hours

**37,721,756** total vaccine doses  
administered in primary care settings  
**1,318,013** total vaccine doses  
administered in aged care and disability  
settings

NSW	Jurisdictions	Commonwealth
Cumulative	5,143,577	13,581,314
Daily increase	<10	9,701

VIC	Jurisdictions	Commonwealth
Cumulative	6,134,115	9,690,663
Daily increase	408	6,496

QLD	Jurisdictions	Commonwealth
Cumulative	3,862,734	7,549,359
Daily increase	181	6,569

WA	Jurisdictions	Commonwealth
Cumulative	2,533,655	4,100,951
Daily increase	367	2,585

TAS	Jurisdictions	Commonwealth
Cumulative	629,258	740,994
Daily increase	94	676

SA	Jurisdictions	Commonwealth
Cumulative	1,847,969	2,355,038
Daily increase	534	2,371

ACT	Jurisdictions	Commonwealth
Cumulative	809,372	772,919
Daily increase	493	626

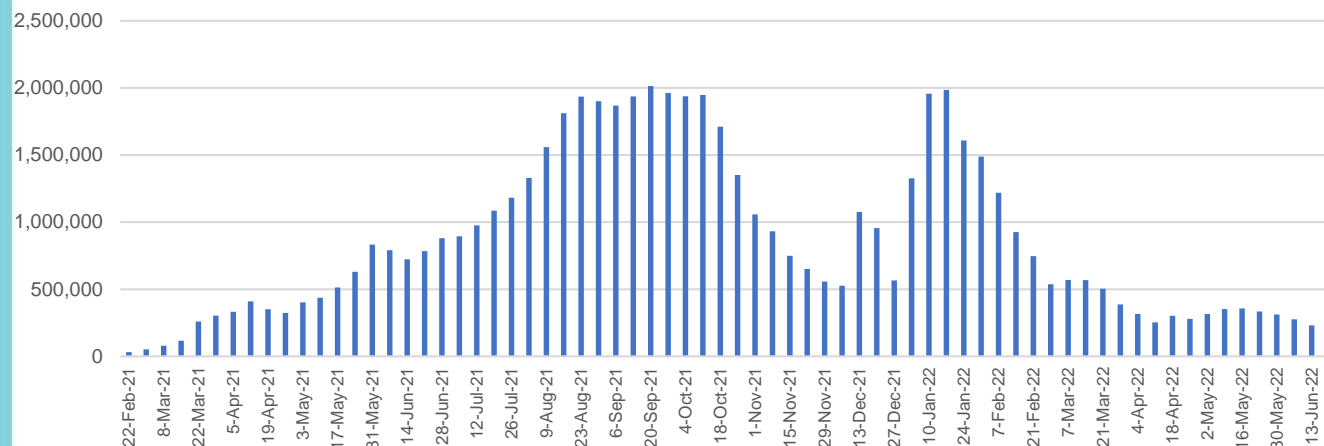
NT	Jurisdictions	Commonwealth
Cumulative	347,460	248,531
Daily increase	11	138

# Vaccine milestone charts

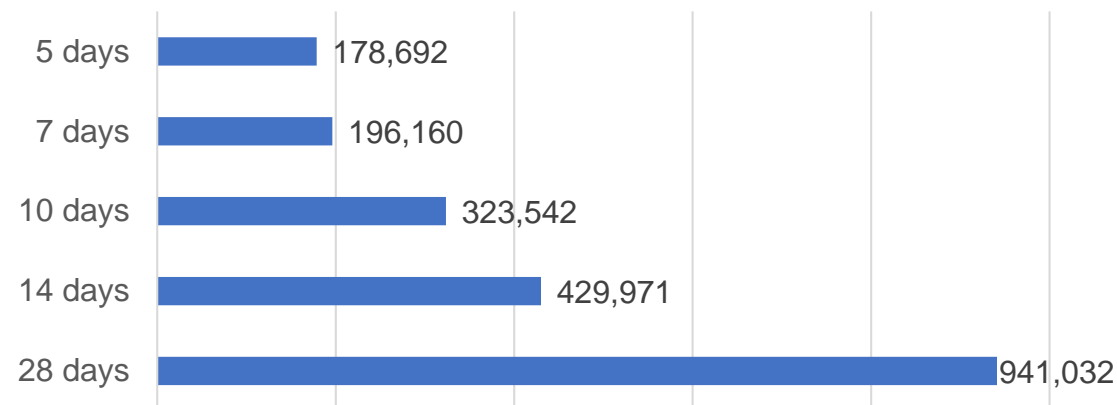
Data as at:  
01 Jul 2022

Australia's COVID-19  
Vaccine Roadmap

## Doses Administered by Week

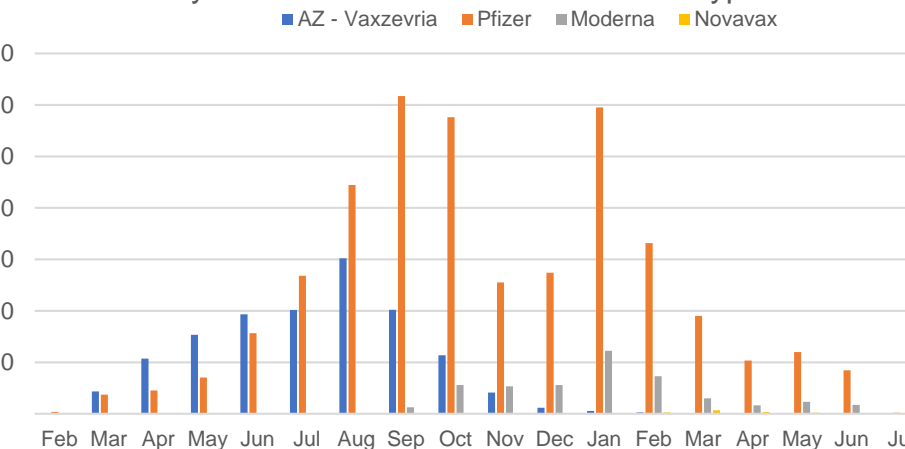


## Doses Reported

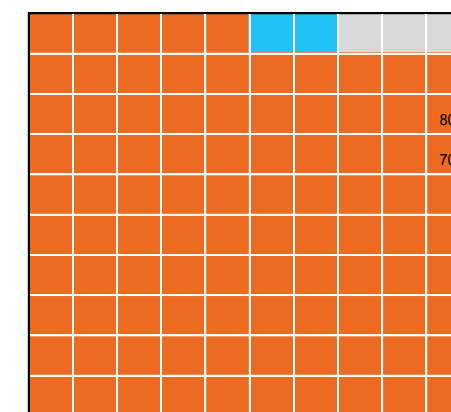


\*Sourced from the Australian Immunisation Register.

## Doses by administration month and vaccine type



## Eligible population percentage coverage



1st dose: > 95.0% 2nd dose: > 95.0%

\*Each square represents 1% of the national population.  
Squares are filled as milestones are achieved.

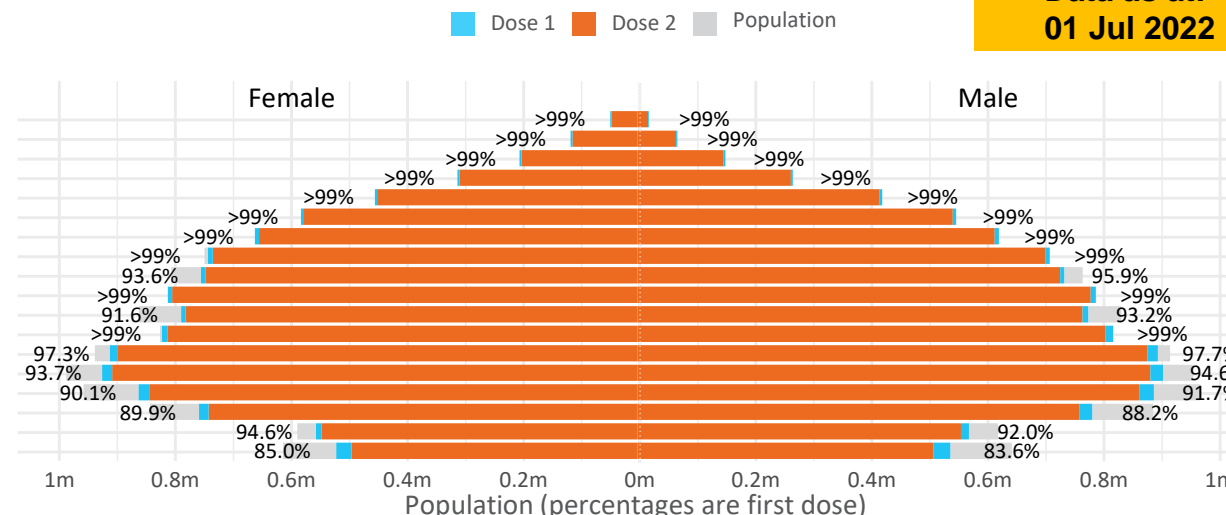
Data as at:  
01 Jul 2022

# Doses by age and sex

First and second doses by age and sex

	16+	50+	12-15	5-11
Dose 1	97.55% (20,114,098 doses / 20,619,959 people)	>99% (8,931,317 doses / 8,749,703 people)	84.35% (1,049,342 doses / 1,243,990 people)	52.29% (1,190,557 doses / 2,276,638 people)
Dose 2	95.91% (19,777,446 doses / 20,619,959 people)	>99% (8,823,596 doses / 8,749,703 people)	79.82% (993,003 doses / 1,243,990 people)	39.66% (902,908 doses / 2,276,638 people)

Age	Dose 1	Dose 2
95+	65,939 (>99%)	62,482 (>99%)
90-94	182,546 (>99%)	177,055 (>99%)
85-89	351,826 (>99%)	345,077 (>99%)
80-84	572,858 (>99%)	565,733 (>99%)
75-79	866,629 (>99%)	858,171 (>99%)
70-74	1,119,594 (>99%)	1,108,198 (>99%)
65-69	1,271,777 (>99%)	1,256,901 (>99%)
60-64	1,438,773 (>99%)	1,422,245 (99.0%)
55-59	1,475,714 (94.9%)	1,459,023 (93.8%)
50-54	1,585,661 (>99%)	1,568,711 (>99%)
45-49	1,550,650 (92.5%)	1,532,258 (91.4%)
40-44	1,626,738 (>99%)	1,602,748 (98.9%)
35-39	1,794,226 (97.8%)	1,761,982 (96.0%)
30-34	1,820,063 (94.6%)	1,778,010 (92.4%)
25-29	1,743,965 (91.5%)	1,696,059 (89.0%)
20-24	1,531,462 (89.4%)	1,491,136 (87.1%)
16-19	1,115,677 (93.3%)	1,091,657 (91.3%)
12-15	1,049,342 (84.4%)	993,003 (79.8%)



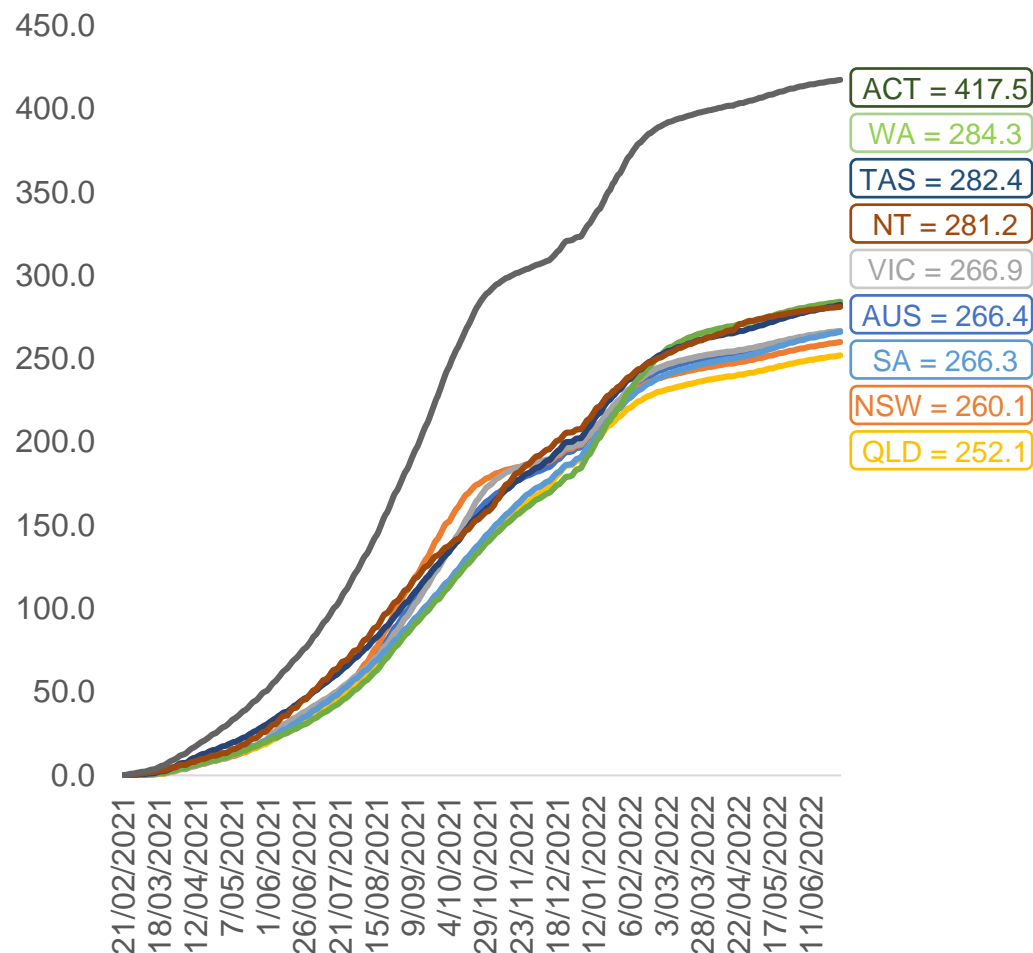
	AUS	ACT	NSW	NT	QLD	SA	TAS	VIC	WA
16 and over - dose 1	20,114,098	353,565	6,343,276	173,914	3,874,992	1,379,432	446,158	5,175,904	2,100,825
16 and over - dose 2	19,777,446	347,811	6,245,050	169,236	3,811,238	1,350,123	437,146	5,097,303	2,069,807
16 and over - population	20,619,959*	344,037	6,565,651	190,571	4,112,707	1,440,400	440,172	5,407,574	2,114,978
16 and over % with dose 1	97.55%	>99%	96.61%	91.26%	94.22%	95.77%	>99%	95.72%	>99%
16 and over % with dose 2	95.91%	>99%	95.12%	88.80%	92.67%	93.73%	>99%	94.26%	97.86%
5 to 11 - dose 1	1,190,557	31,728	355,539	13,138	206,226	83,601	28,428	324,250	140,053
5 to 11 - dose 2	902,908	27,365	275,938	8,808	150,365	63,708	23,171	246,525	102,410
5 to 11 - population	2,276,638	39,789	716,460	24,750	478,731	148,816	45,033	578,499	244,154
5 to 11 % with dose 1	52.29%	79.74%	49.62%	53.08%	43.08%	56.18%	63.13%	56.05%	57.36%
5 to 11 % with dose 2	39.66%	68.78%	38.51%	35.59%	31.41%	42.81%	51.45%	42.61%	41.94%
12 to 15 - dose 1	1,049,342	20,148	322,647	10,740	205,618	68,229	22,855	274,185	115,535
12 to 15 - dose 2	993,003	19,586	308,162	9,694	191,989	64,456	21,733	262,309	106,921
12 to 15 - population	1,243,990	19,693	390,330	13,060	270,146	82,747	26,308	308,611	132,869
12 to 15 % with dose 1	84.35%	>99%	82.66%	82.24%	76.11%	82.45%	86.87%	88.84%	86.95%
12 to 15 % with dose 2	79.82%	>99%	78.95%	74.23%	71.07%	77.90%	82.61%	85.00%	80.47%

\*National population will not equal sum of listed jurisdictions due to a small number of people counted in national population residing in some 'other' territories. Sum of state doses will not add to national total as some records are unable to be geocoded to a State or Territory.  
Doses sourced from Australian Immunisation Register, population from ABS ERP June 2020



# Vaccinations by location

Cumulative total doses administered vs eligible state populations\*

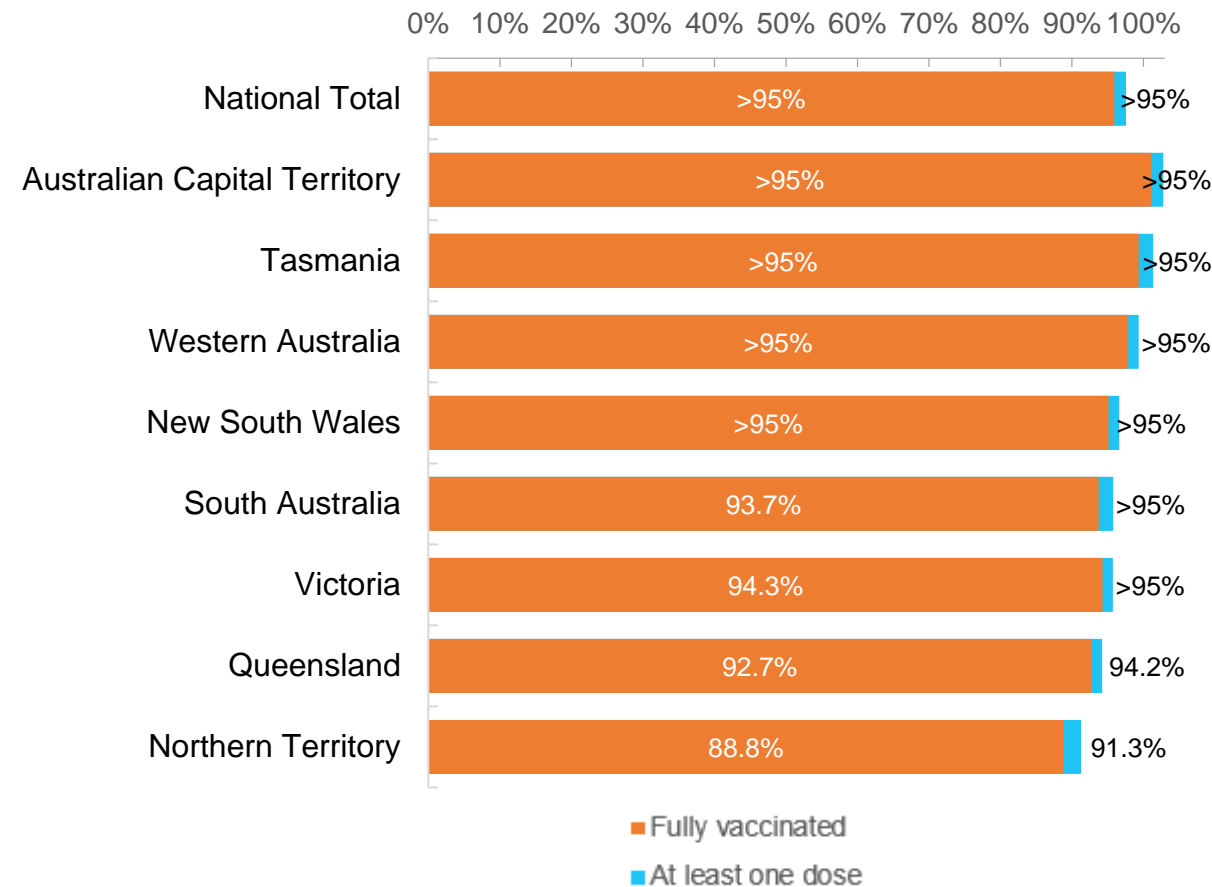


\*Not an indication of percentage vaccinated, numbers will exceed 100 due to multiple doses required per person of the population. All doses are included for those aged 12 and above, and are based on vaccination provider location.

Data as at:  
01 Jul 2022

Australia's COVID-19  
Vaccine Roadmap

First and Second Doses by residential location



# Aboriginal and Torres Strait Islander peoples

## Number of people vaccinated

Data as at:  
28 Jun 2022  
Updated weekly

Australia's COVID-19  
Vaccine Roadmap



**443,113**

people over the age of 16  
have had at least one dose

**85.0%**

of people over the age of 16  
have had at least one dose



**424,811**

people over the age of 16  
are fully vaccinated

**81.5%**

of people over the age of 16 are  
fully vaccinated



People aged 12 – 15 years

**47,872**

**42,003**

**67.8%**

At least one dose

**59.5%**

Fully vaccinated

### 178 Aboriginal community controlled health services (ACCHS)

0#  
**ACT**

50  
**NSW**

27  
**NT**

44  
**QLD**

12  
**SA**

3  
**TAS**

21  
**VIC**

21  
**WA**

Medicare Address State <sup>##</sup>	Individuals Dose 1	Individuals Dose 1 %	Individuals Dose 2	Individuals Dose 2 %
Australian Capital Territory	4,796	91.8%	4,674	89.5%
New South Wales	135,834	87.3%	132,792	85.4%
Northern Territory	41,467	89.7%	39,494	85.4%
Queensland	116,516	81.8%	111,181	78.1%
South Australia	20,051	80.5%	18,681	75.0%
Tasmania	13,878	88.8%	13,476	86.2%
Victoria	35,636	90.4%	34,853	88.4%
Western Australia	53,544	86.8%	49,909	80.9%
Unknown/Other Territories	21,391	70.4%	19,751	65.0%
<b>Totals</b>	<b>443,113</b>	<b>85.0%</b>	<b>424,811</b>	<b>81.5%</b>

Source: Australian Immunisation Register

\*Identifying as Aboriginal and Torres Strait Islander is optional and the estimated population may be under reported.

\*\*Includes all Aboriginal and Torres Strait Islander peoples who have received a vaccination, not limited to those administered in an ACCHS setting

##ACCHS in the ACT are currently operating as a Commonwealth Vaccine Clinics so not included to avoid double counting

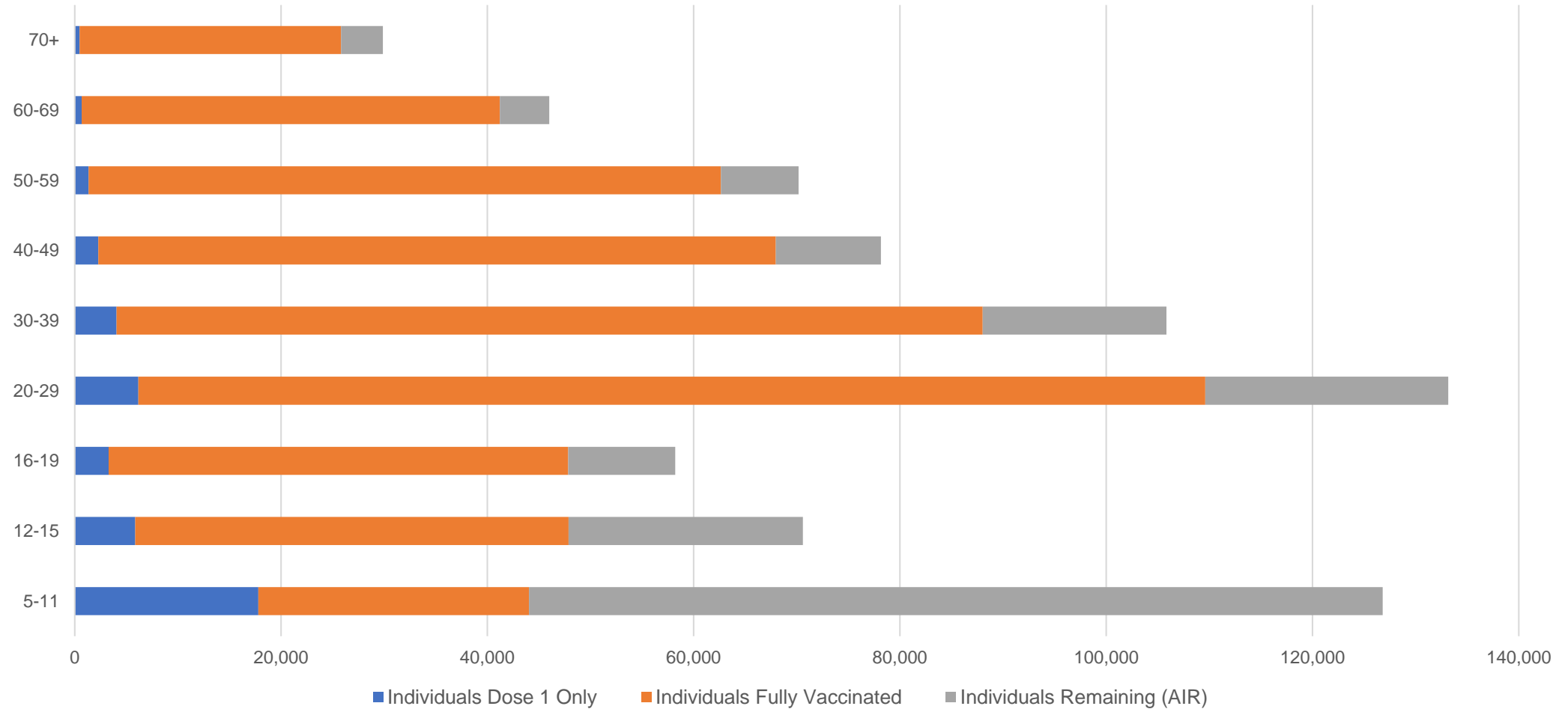
##The above table includes all identified Aboriginal and Torres Strait Islander people who are aged 16 and above by their state of residence.

# Aboriginal and Torres Strait Islander peoples

## Number of people vaccinated by age

Data as at:  
28 Jun 2022  
Updated weekly

Australia's COVID-19  
Vaccine Roadmap



Source: Australian Immunisation Register

# Commonwealth primary care

Data as at:  
01 Jul 2022

Australia's COVID-19  
Vaccine Roadmap



## Primary care vaccine administration sites

<b>5,701</b>	<b>128</b>	<b>178</b>	<b>3,613</b>
GPs	CVCs	ACCHS	Pharmacies



**37,721,756** total vaccine doses administered  
primary care settings as at 01 July  
**+ 28,817** recorded in the last 24 hours

## Primary care vaccinations by provider type

	Doses administered	Daily increase	7 day increase
General Practice* includes other Commonwealth	30,133,800	19,114	117,720
Pharmacy	7,587,956	9,703	56,136

**NSW**  
**13,007,445**  
(+9,571 daily increase)

**VIC**  
**9,357,810**  
(+6,496 daily increase)

**QLD**  
**7,265,145**  
(+6,693 daily increase)

**WA**  
**3,960,274**  
(+2,651 daily increase)

**TAS**  
**720,052**  
(+711 daily increase)

**SA**  
**2,273,491**  
(+2,434 daily increase)

**ACT**  
**596,609**  
(+552 daily increase)

**NT**  
**222,555**  
(+119 daily increase)

**318,375**

doses administered to persons  
residing in other territories or with  
missing residential information

\*General practice includes Commonwealth Vaccination Clinics, Aboriginal Community Health Centres, Royal Flying Doctor Service and other Commonwealth vaccination facilities

Source: Australian Immunisation Register

Data as at:  
01 Jul 2022

# Commonwealth aged care and disability doses administered



**1,318,013** (+ 345 last 24 hours)

Total vaccine doses administered in aged care and disability facilities as at 01 July

Number of doses administered as part of the Commonwealth aged and disability care rollout

**NSW**  
**572,414**  
(+79 daily increase)

**VIC**  
**247,667**  
(<10 daily increase)

**QLD**  
**209,885**  
(+68 daily increase)

**WA**  
**112,401**  
(+110 daily increase)

**TAS**  
**23,760**  
(<10 daily increase)

**SA**  
**86,438**  
(<10 daily increase)

**ACT**  
**17,963**  
(<10 daily increase)

**NT**  
**7,710**  
(<10 daily increase)

**39,775**

doses administered to persons  
residing in other territories or with  
missing residential information

\*Sourced from the Australian Immunisation Register. Includes all persons vaccinated at participating residential aged care, disability and related industry settings.

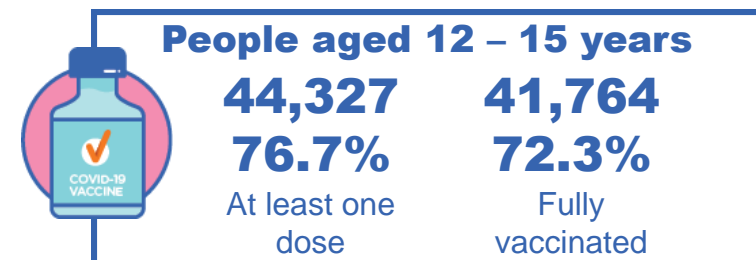
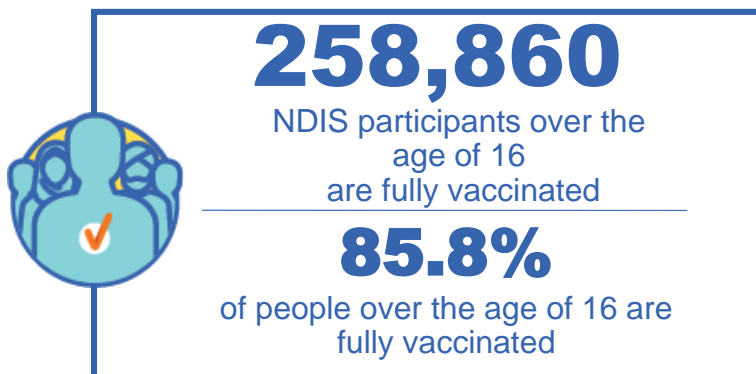
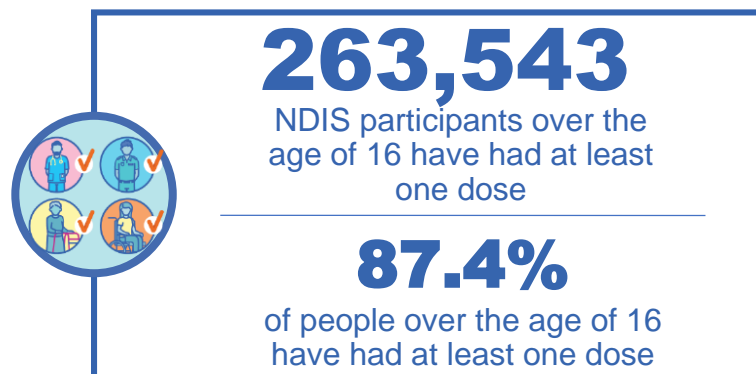
\*\*State level breakdown indicates the residential location and may not align to the state in which the vaccination occurred.

Source: Australian Immunisation Register

# National Disability Insurance Scheme (NDIS) reported vaccinations

Data as at:  
30 June 2022  
Updated weekly

Australia's COVID-19  
Vaccine Roadmap



## NDIS participant vaccinations

	People aged 16+ with at least one dose	People aged 16+ fully vaccinated	% People aged 16+ with at least one dose	% People aged 16+ fully vaccinated
ACT	4,957	4,893	89.3%	88.2%
NSW	80,634	79,372	87.8%	86.4%
NT	2,298	2,227	78.7%	76.3%
QLD	52,303	51,315	85.8%	84.2%
SA	21,582	21,083	85.2%	83.2%
TAS	6,583	6,430	87.6%	85.6%
VIC	69,988	68,840	88.5%	87.1%
WA	25,198	24,700	88.8%	87.0%
National	263,543	258,860	87.4%	85.8%

Source: Linkage between National Disability Insurance Agency data and the Australian Immunisation Register. Total NDIS participant numbers as at 30 May. Australian Immunisation Register data as at 29 June. Includes all participants regardless of residence type.

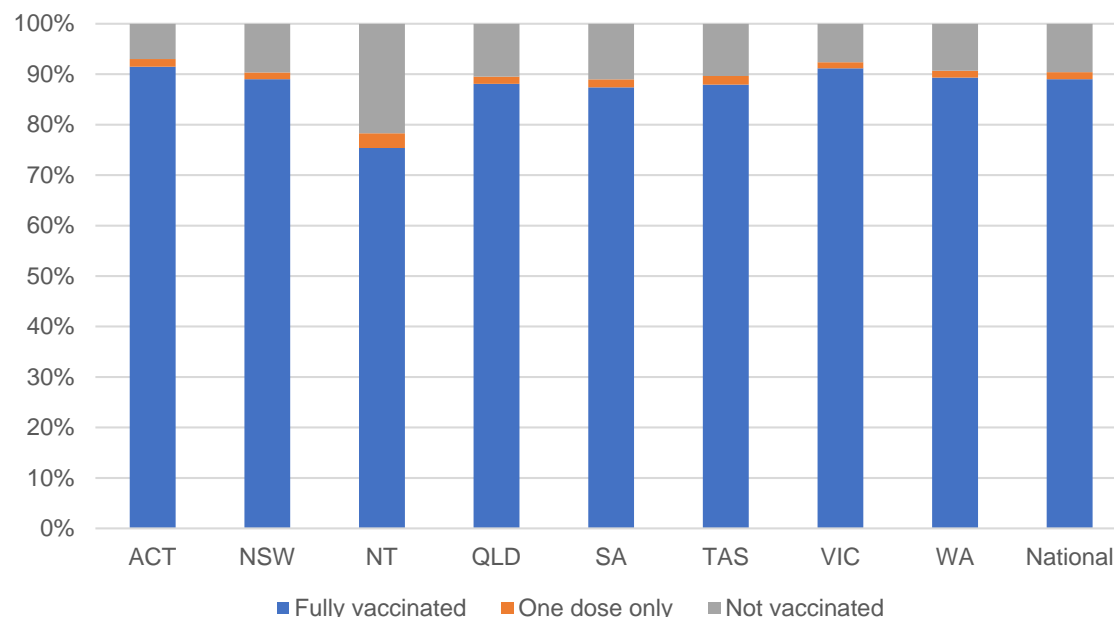
# National Disability Insurance Scheme (NDIS) reported vaccinations

Data as at:  
30 June 2022  
Updated weekly

Australia's COVID-19  
Vaccine Roadmap

NATIONAL	Total people with at least one dose	People fully vaccinated	Total number of individuals in cohort	% People with at least one dose	% People fully vaccinated
NDIS participants living in disability accommodation	21,298	20,973	23,469	90.7%	89.4%

## NDIS participants in disability and aged care accommodation



Source: Linkage between National Disability Insurance Agency data and the Australian Immunisation Register. Includes participants residing in disability accommodation only.

Source: Total NDIS participant numbers as at 30 May. Participant data as at 29 June. Australian Immunisation Register data as at 29 June. Worker data as at 30 June.

## NDIS workforce vaccinations

	NDIS workers with at least one dose	NDIS workers fully vaccinated	% NDIS workers with at least one dose	% NDIS workers fully vaccinated
NSW	127,532	122,353	98.2%	94.3%
VIC	118,277	114,994	98.5%	95.7%
QLD	71,506	70,666	97.9%	96.7%
WA	34,529	33,079	99.0%	94.8%
SA	35,855	33,971	98.5%	93.3%
TAS	12,437	12,025	98.8%	95.5%
ACT	12,329	12,302	99.8%	99.6%
NT	3,959	3,809	99.6%	95.8%
<b>TOTAL</b>	<b>416,424</b>	<b>403,199</b>	<b>98.4%</b>	<b>95.3%</b>

Source: the NDIS Commission has established a requirement for registered NDIS providers who provide intensive disability support services to report on the vaccination status of workers they employ, or otherwise engage, to deliver NDIS-funded supports and services, and who are required to be vaccinated in accordance with in-force state and territory public health orders. The statistics reflect data reported to the NDIS Commission by registered NDIS providers and should be considered indicative and subject to change

Note: Some registered NDIS providers are yet to report on the vaccination status of their workforce. The NDIS Commission is working with those providers around reporting requirements.

Remaining workers not included include those exempt from vaccination requirements, workers whose vaccination status is not yet verified by the provider (such as workers on leave) and provider reporting anomalies.



# Residential aged care vaccination rollout

Residential aged care facilities status

**176,490**

People fully vaccinated

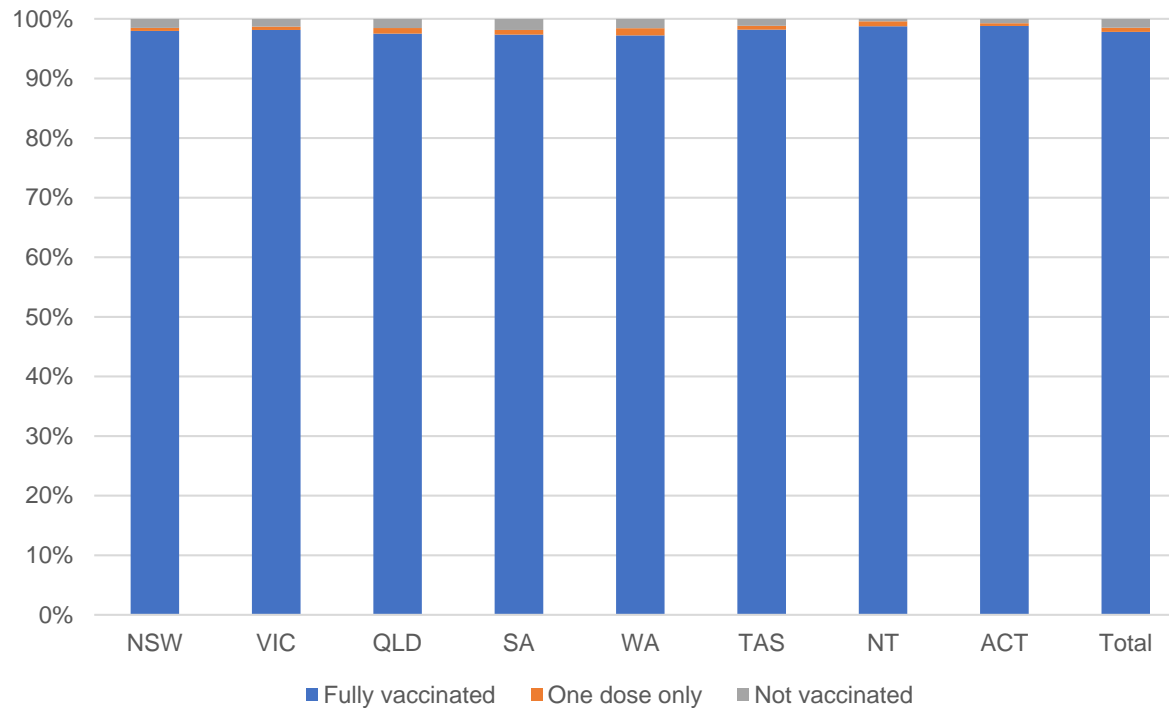
**177,740**

People with at least one dose

Australia's COVID-19 Vaccine Roadmap

Data as at:  
30 June 2022  
Updated weekly

## Aged care resident vaccinations



## Aged care worker vaccinations

Jurisdictions	Total workers with at least one dose	Workers fully vaccinated	% Workers with at least one dose	% Workers fully vaccinated
NSW	77,570	77,442	99.9%	99.7%
VIC	71,156	71,155	100.0%	100.0%
QLD	48,482	48,481	99.9%	99.8%
SA	27,012	27,005	100.0%	100.0%
WA	24,639	24,638	100.0%	100.0%
TAS	7,534	7,534	100.0%	100.0%
NT	920	920	100.0%	100.0%
ACT	2,953	2,953	100.0%	100.0%
Total	260,266	260,128	99.9%	99.9%

Source: Residential aged care provider self-reported COVID-19 vaccination information

\*Status updates are provided by facilities at least once per week. Reporting is updated Monday to Friday to encompass different facility updates being made on different days.

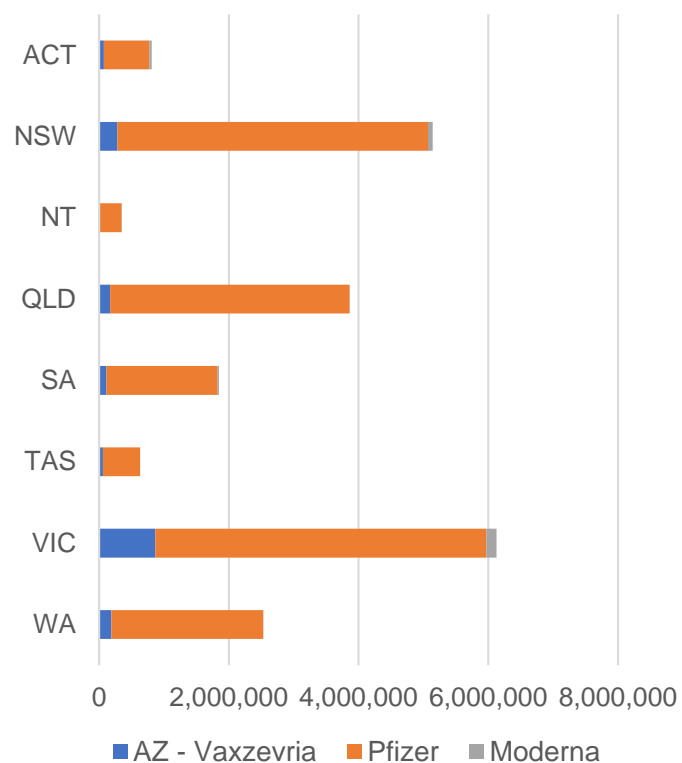
Data is sourced directly from Aged Care Service Providers and is not drawn or closely aligned with data from AIR due to inconsistencies and potential lags in uploading of records.



Data as at:  
01 Jul 2022

## Jurisdiction administered

Total vaccine doses administered in State and Territory clinics as at 01 July



**21,308,140** total vaccine doses administered  
in State and Territory clinics as at 01 July  
+ **2,091** recorded in the last 24 hours  
+ **19,733** recorded in the last 7 days

**NSW**  
**5,143,577**  
(**<10** daily  
increase)

**VIC**  
**6,134,115**  
(**+408** daily  
increase)

**QLD**  
**3,862,734**  
(**+181** daily  
increase)

**WA**  
**2,533,655**  
(**+367** daily  
increase)

**TAS**  
**629,258**  
(**+94** daily  
increase)

**SA**  
**1,847,969**  
(**+534** daily  
increase)

**ACT**  
**809,372**  
(**+493** daily  
increase)

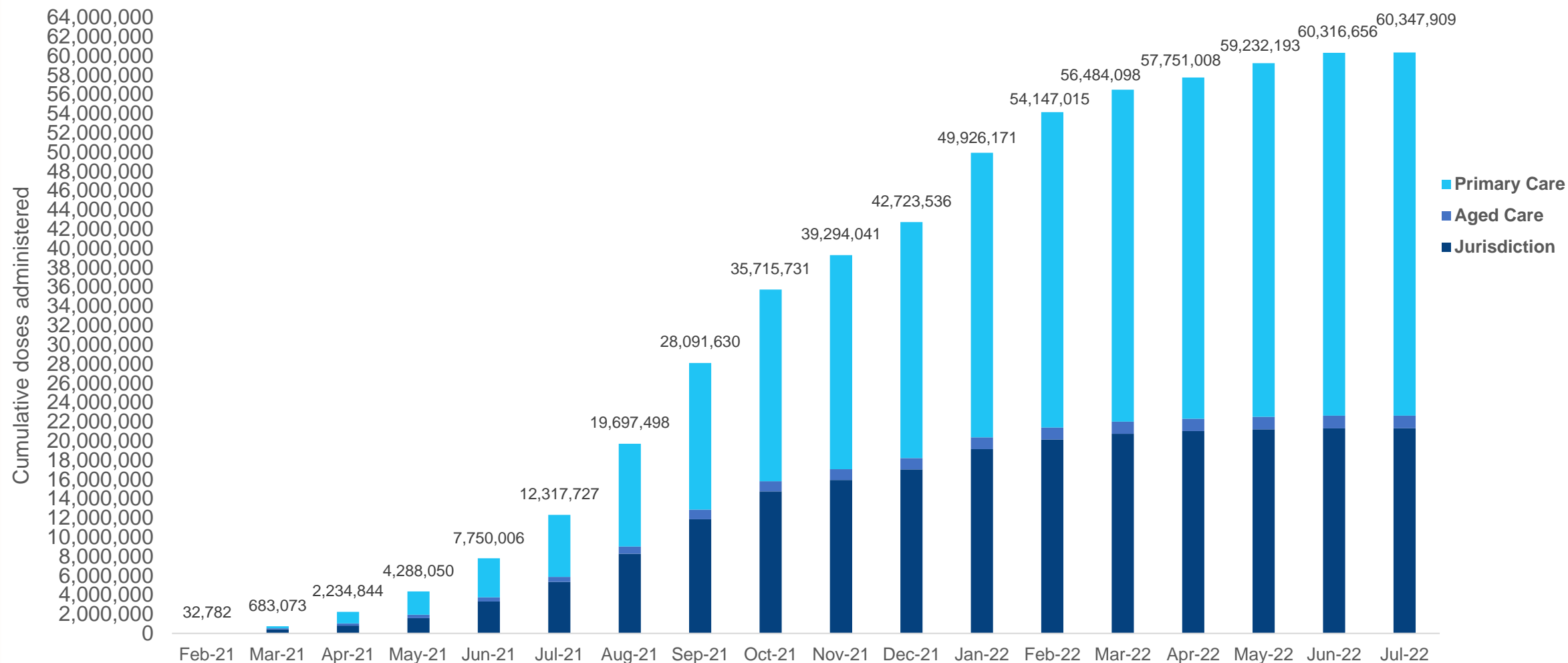
**NT**  
**347,460**  
(**+11** daily  
increase)

\*Sourced from the Australian Immunisation Register. Numbers are calculated as difference in daily cumulative reported numbers to allow for historical corrections.

# Cumulative doses administered by channel

Data as at:  
01 Jul 2022

Australia's COVID-19  
Vaccine Roadmap

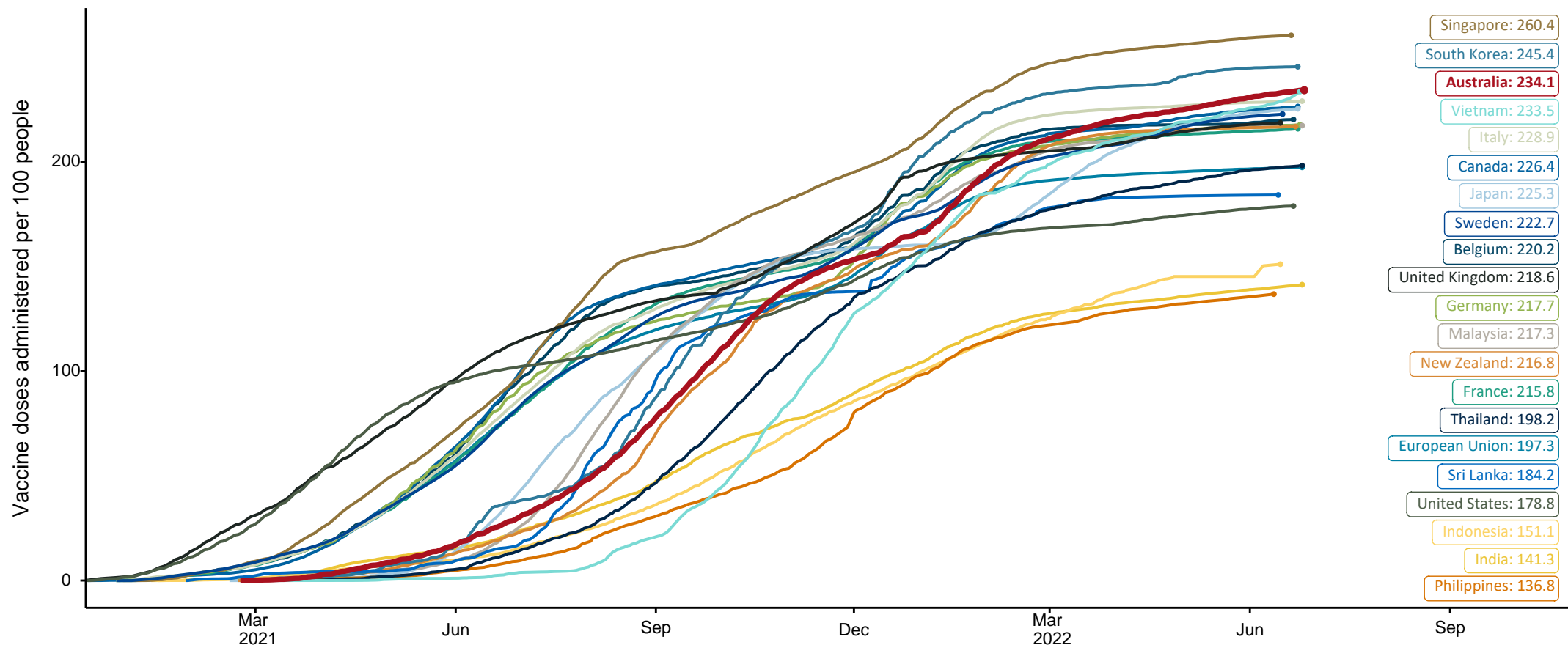


Source: Australian Immunisation Register

# COVID-19 vaccine doses per 100, Australia and select countries

Data as at:  
26 June 2022  
Updated weekly

Australia's COVID-19  
Vaccine Roadmap

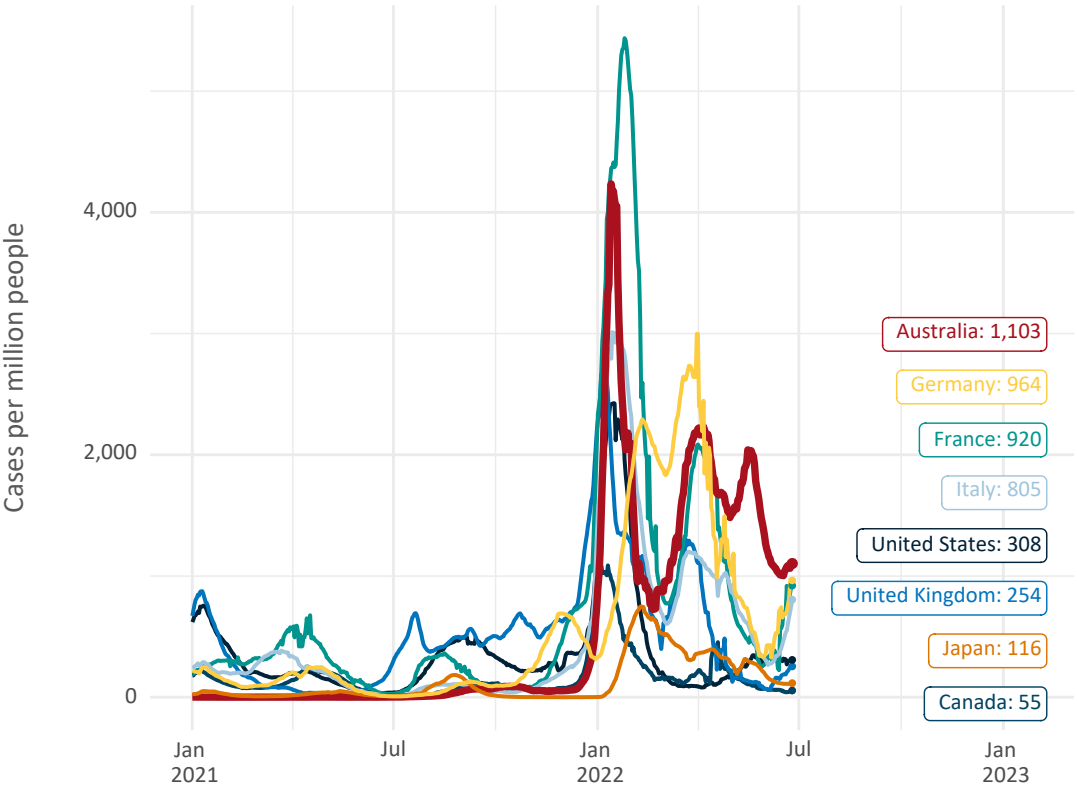


Note: From 11 January 2022, data for Australia includes all doses administered to people 5 and over. Prior to 11 January, data was for 12 and over.  
Source: Department of Health (Australia), Our World in Data (international)  
Latest data: 26 June

# International data – COVID-19

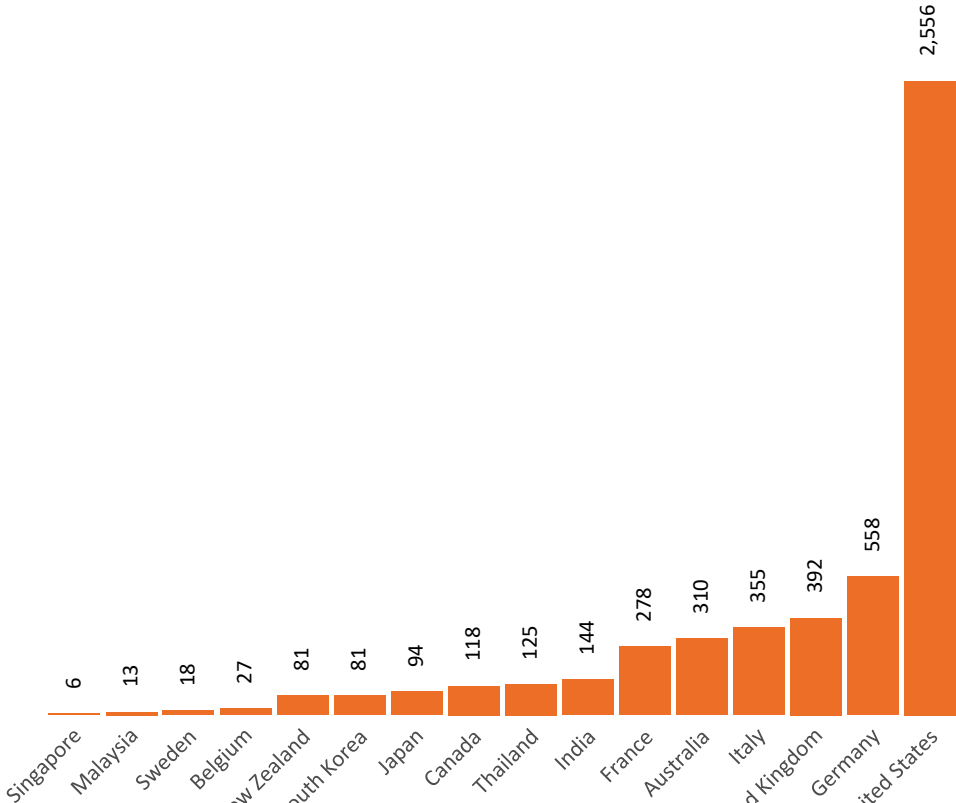
Data as at:  
26 June 2022  
Updated weekly

New daily cases per million since 2021, Australia and G7 countries  
Smoothed - 7 day average



Source: OWID  
Data downloaded: 27 Jun 2022 08:54  
Latest data: 25 Jun 2022

COVID-19 deaths in past 7 days - Australia and select countries



Source: OWID  
Data downloaded: 27 Jun 2022 08:54  
Latest data: 25 Jun 2022