



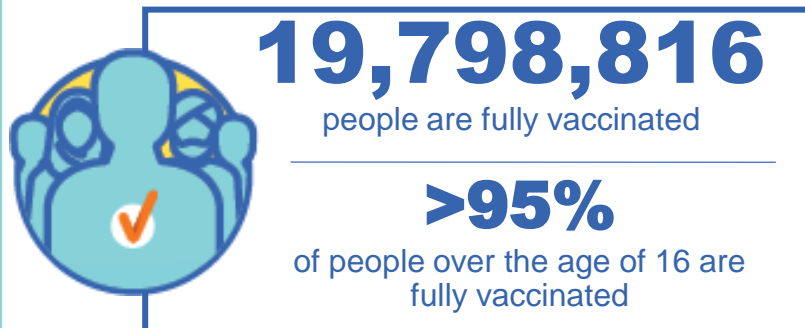
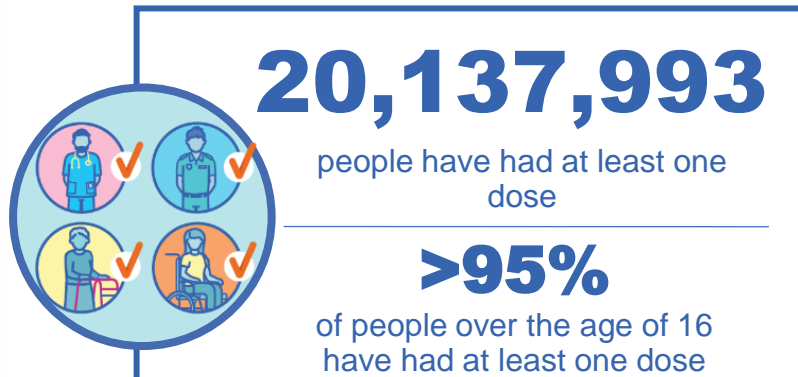
Australian Government
Operation COVID Shield

COVID-19 Vaccine Roll-out

18 July 2022

Data as at:
17 Jul 2022

Total vaccine doses



61,255,933 total vaccine
doses administered nationally as at 17 July

+21,172 recorded in the last 24 hours

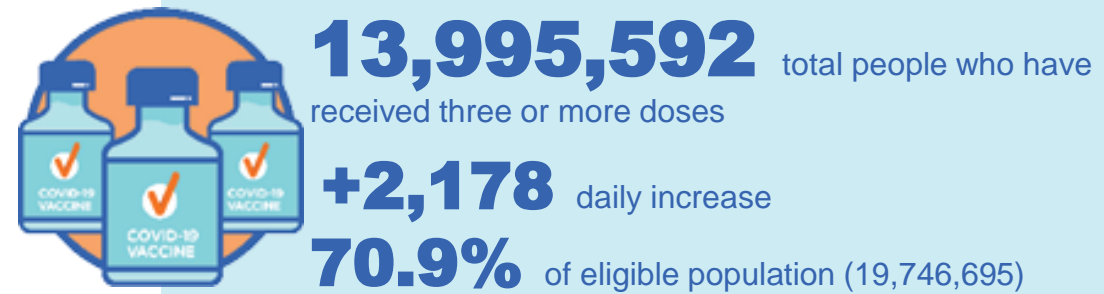
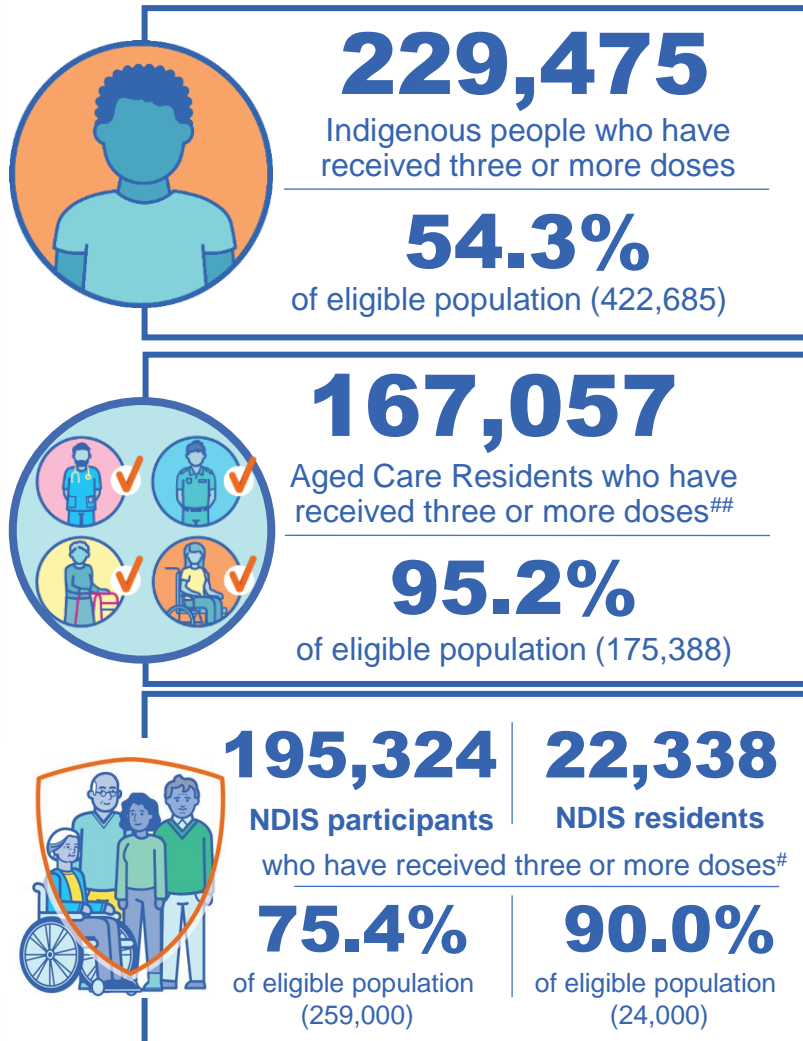


*Administration state breakdown indicates state in which a vaccine was administered

**Overall dose count includes instances of more than three doses per person in a small number of cases.

Source: Australian Immunisation Register

Booster Vaccinations



Data as at:
17 Jul 2022

	Number of People	Daily Increase	% of Eligible
NSW	4,276,930	838	68.6%
VIC	3,725,872	344	73.2%
QLD	2,429,455	387	63.9%
WA	1,710,484	137	82.8%
SA	1,004,203	167	74.6%
TAS	320,170	85	73.4%
ACT	275,846	11	79.4%
NT	131,944	<10	78.3%

*People may belong to multiple groups and could be represented in the above breakdowns multiple times.
NDIS participants data as at 12 July 2022. ## Aged Care Residents data as at 15 July 2022.

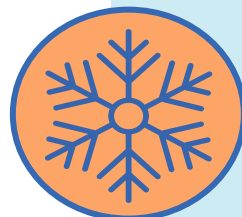
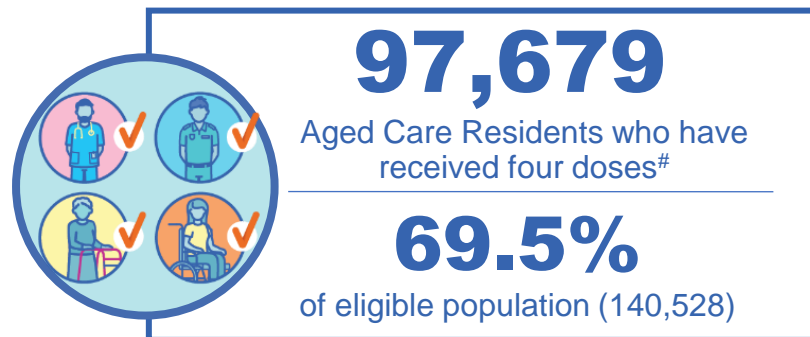
Source: Australian Immunisation Register

120,688 doses administered to persons residing in other territories or with missing residential information

Fourth Doses

Data as at:
17 Jul 2022

Australia's COVID-19
Vaccine Roadmap



3,129,650
+17,654

total people (16+) who have received four doses
daily increase (16+)

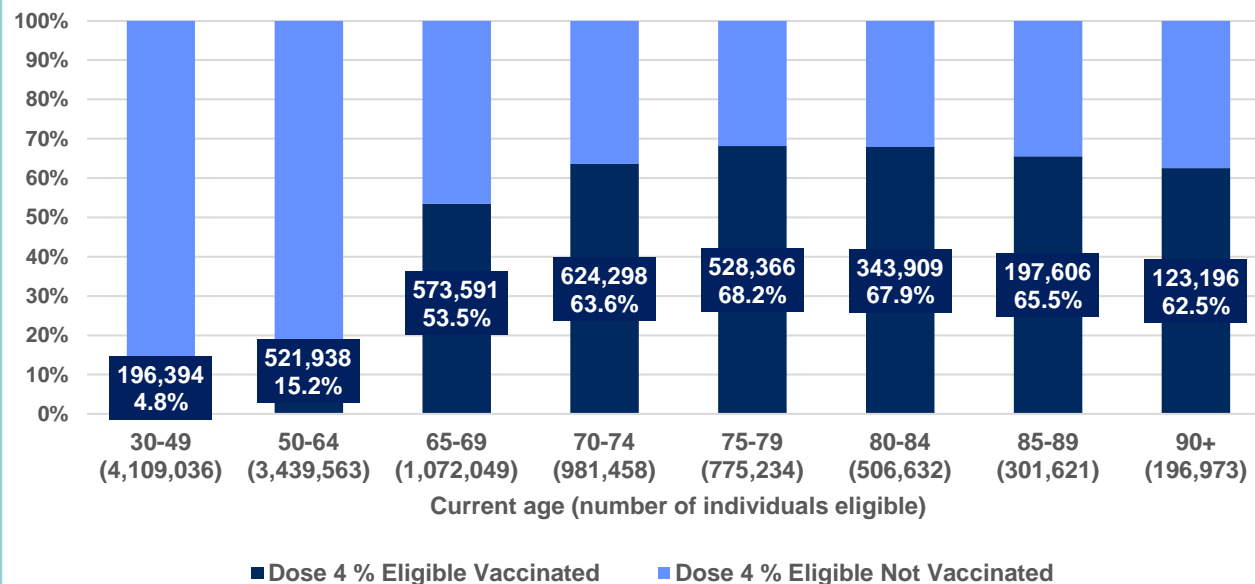
27.3%

of eligible people (30+) (11,382,566)

2,390,966
62.4%

total people (65+) who have received four doses
of eligible people (65+) (3,833,967)

% Individuals eligible vaccinated by current age



	Number of People 16+	Daily Increase
ACT	59,991	171
NSW	1,005,254	6,542
NT	13,240	23
QLD	610,997	3,206
SA	254,868	1,387
TAS	86,443	839
VIC	767,090	3,272
WA	316,544	2,071

15,223

doses administered to persons residing in other territories or with missing residential information

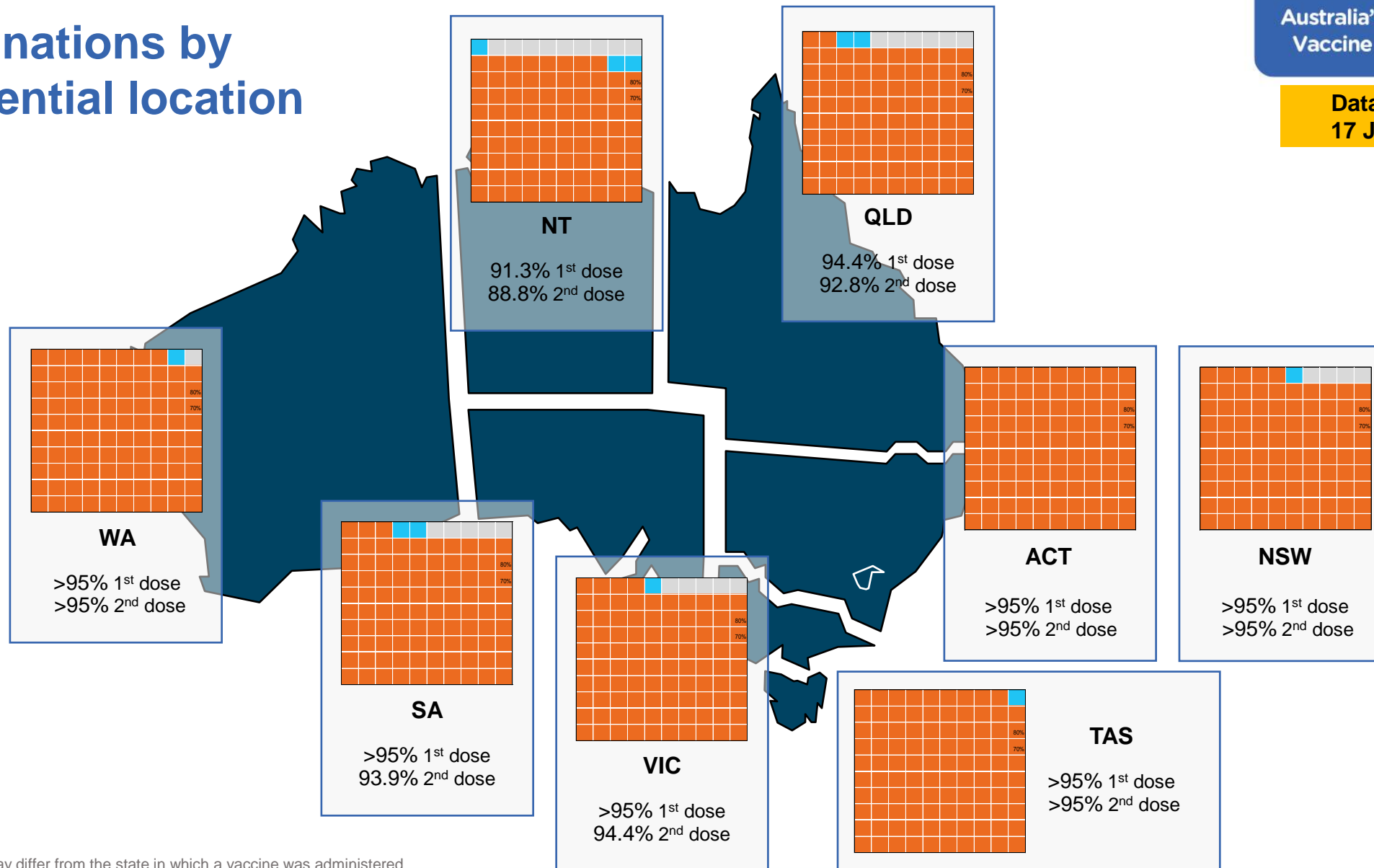
*People become eligible for a fourth dose three months after their third dose. Individuals may belong to multiple groups and could be represented in the above multiple times.
Aged Care Residents data as at 14 July 2022.

Source: Australian Immunisation Register

Vaccinations by residential location

Australia's COVID-19
Vaccine Roadmap

Data as at:
17 Jul 2022



*Residential state may differ from the state in which a vaccine was administered

Commonwealth and Jurisdiction vaccine doses administered

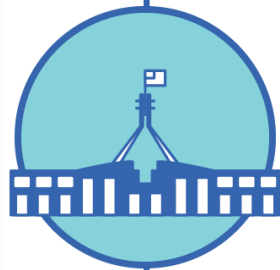
Data as at:
17 Jul 2022



61,255,933 total vaccine
doses administered nationally as at 17 July
+ 21,172 recorded in the last 24 hours



21,402,621
doses administered by state
and territory facilities
+ 6,329
recorded in the last 24 hours



39,853,312
doses administered by
commonwealth facilities
+ 14,843
recorded in the last 24 hours

38,531,046 total vaccine doses
administered in primary care settings
1,322,266 total vaccine doses
administered in aged care and disability
settings

NSW	Jurisdictions	Commonwealth
Cumulative	5,163,152	13,853,413
Daily increase	3,687	4,685

VIC	Jurisdictions	Commonwealth
Cumulative	6,151,115	9,882,308
Daily increase	11	3,810

QLD	Jurisdictions	Commonwealth
Cumulative	3,870,770	7,732,915
Daily increase	217	3,733

WA	Jurisdictions	Commonwealth
Cumulative	2,554,764	4,171,697
Daily increase	993	1,360

TAS	Jurisdictions	Commonwealth
Cumulative	635,252	757,798
Daily increase	778	226

SA	Jurisdictions	Commonwealth
Cumulative	1,863,638	2,411,348
Daily increase	568	827

ACT	Jurisdictions	Commonwealth
Cumulative	816,219	791,278
Daily increase	75	179

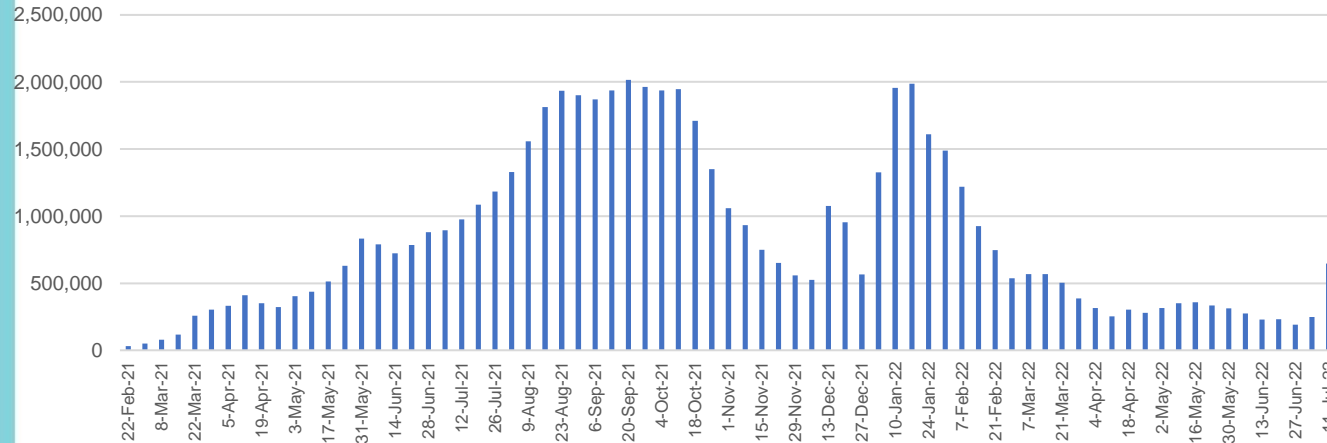
NT	Jurisdictions	Commonwealth
Cumulative	347,711	252,555
Daily increase	<10	23

Vaccine milestone charts

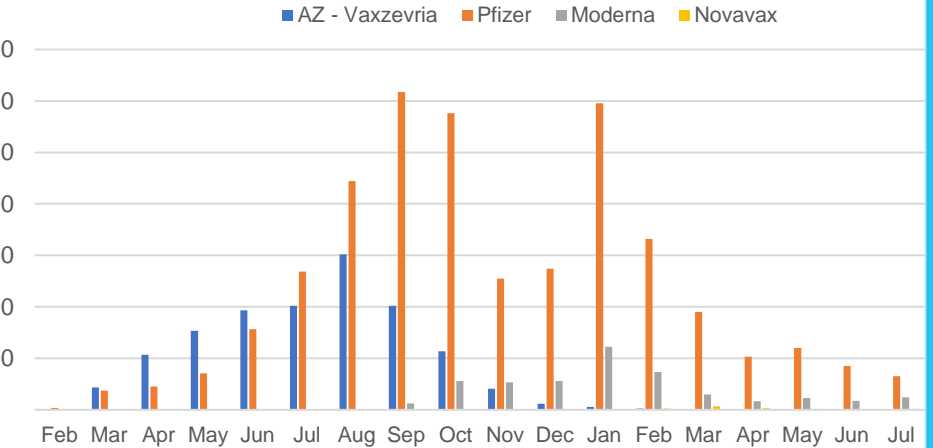
Data as at:
17 Jul 2022

Australia's COVID-19
Vaccine Roadmap

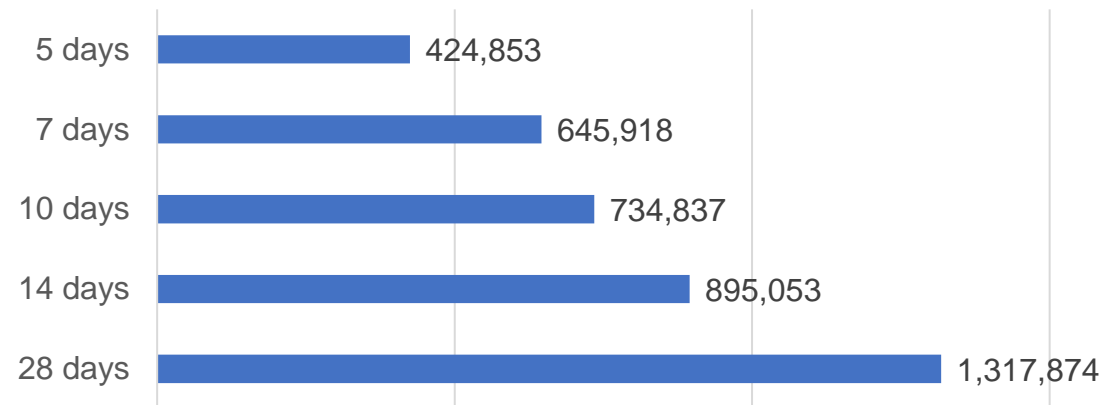
Doses Administered by Week



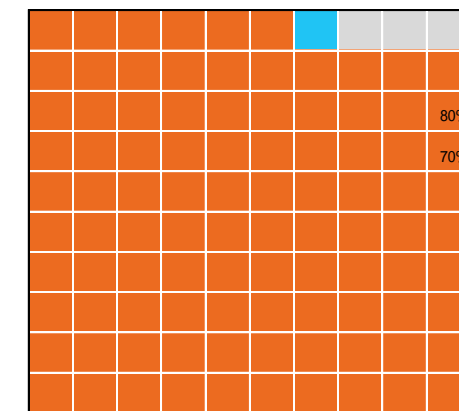
Doses by administration month and vaccine type



Doses Reported



Eligible population percentage coverage



1st dose: > 95.0% 2nd dose: > 95.0%

*Each square represents 1% of the national population. Squares are filled as milestones are achieved.

*Sourced from the Australian Immunisation Register.

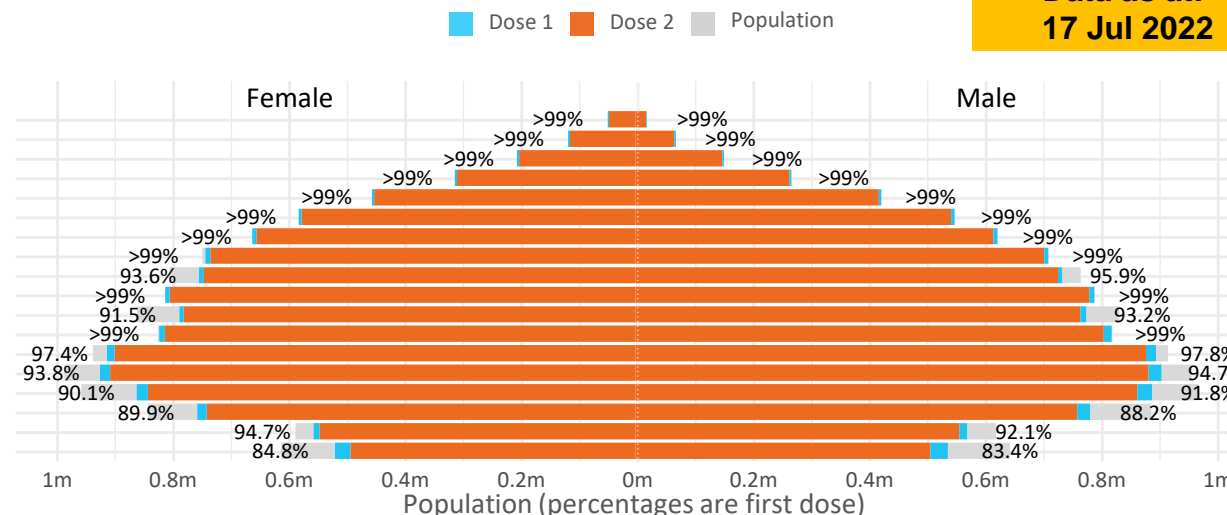
Data as at:
17 Jul 2022

Doses by age and sex

First and second doses by age and sex

	16+	50+	12-15	5-11
Dose 1	97.66% (20,137,993 doses / 20,619,959 people)	>99% (8,949,789 doses / 8,749,703 people)	84.13% (1,046,530 doses / 1,243,990 people)	52.29% (1,190,412 doses / 2,276,638 people)
Dose 2	96.02% (19,798,816 doses / 20,619,959 people)	>99% (8,840,803 doses / 8,749,703 people)	79.61% (990,301 doses / 1,243,990 people)	40.25% (916,431 doses / 2,276,638 people)

Age	Dose 1	Dose 2
95+	66,849 (>99%)	63,367 (>99%)
90-94	183,909 (>99%)	178,413 (>99%)
85-89	353,756 (>99%)	347,012 (>99%)
80-84	575,105 (>99%)	567,925 (>99%)
75-79	870,217 (>99%)	861,605 (>99%)
70-74	1,120,952 (>99%)	1,109,391 (>99%)
65-69	1,274,202 (>99%)	1,259,030 (>99%)
60-64	1,441,139 (>99%)	1,424,315 (>99%)
55-59	1,475,865 (94.9%)	1,458,985 (93.8%)
50-54	1,587,795 (>99%)	1,570,760 (>99%)
45-49	1,550,204 (92.5%)	1,531,755 (91.4%)
40-44	1,628,871 (>99%)	1,604,824 (>99%)
35-39	1,796,213 (97.9%)	1,763,821 (96.1%)
30-34	1,821,204 (94.7%)	1,778,923 (92.5%)
25-29	1,744,286 (91.5%)	1,696,147 (89.0%)
20-24	1,530,476 (89.4%)	1,489,737 (87.0%)
16-19	1,116,950 (93.4%)	1,092,806 (91.4%)
12-15	1,046,530 (84.1%)	990,301 (79.6%)

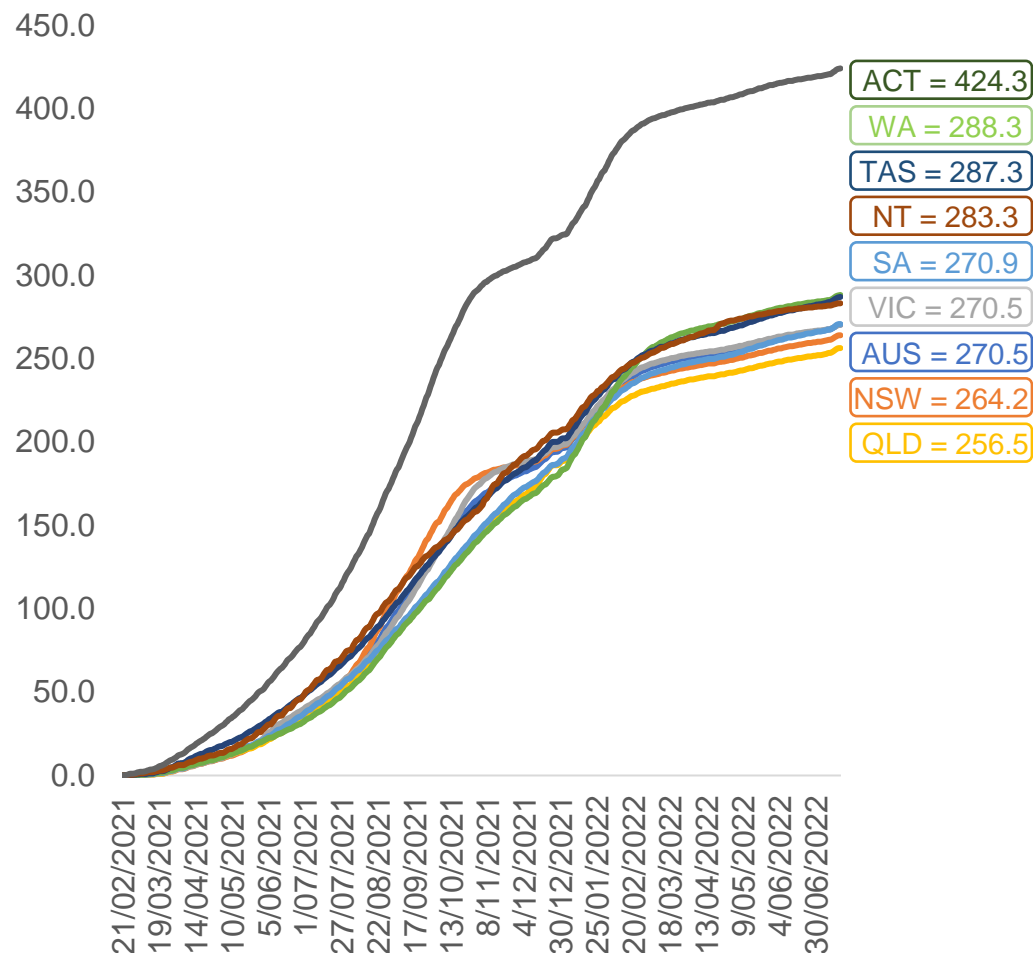


	AUS	ACT	NSW	NT	QLD	SA	TAS	VIC	WA
16 and over - dose 1	20,137,993	353,883	6,351,586	173,969	3,880,628	1,381,283	446,491	5,181,907	2,103,551
16 and over - dose 2	19,798,816	348,096	6,252,164	169,282	3,816,662	1,351,895	437,493	5,102,554	2,072,273
16 and over - population	20,619,959*	344,037	6,565,651	190,571	4,112,707	1,440,400	440,172	5,407,574	2,114,978
16 and over % with dose 1	97.66%	>99%	96.74%	91.29%	94.36%	95.90%	>99%	95.83%	>99%
16 and over % with dose 2	96.02%	>99%	95.23%	88.83%	92.80%	93.86%	>99%	94.36%	97.98%
5 to 11 - dose 1	1,190,412	31,733	356,399	13,089	206,012	83,455	28,389	324,057	139,794
5 to 11 - dose 2	916,431	27,639	281,634	8,838	152,301	64,652	23,328	249,610	103,811
5 to 11 - population	2,276,638	39,789	716,460	24,750	478,731	148,816	45,033	578,499	244,154
5 to 11 % with dose 1	52.29%	79.75%	49.74%	52.88%	43.03%	56.08%	63.04%	56.02%	57.26%
5 to 11 % with dose 2	40.25%	69.46%	39.31%	35.71%	31.81%	43.44%	51.80%	43.15%	42.52%
12 to 15 - dose 1	1,046,530	20,130	322,007	10,699	204,978	68,058	22,769	273,467	115,299
12 to 15 - dose 2	990,301	19,574	307,683	9,628	191,321	64,305	21,663	261,514	106,705
12 to 15 - population	1,243,990	19,693	390,330	13,060	270,146	82,747	26,308	308,611	132,869
12 to 15 % with dose 1	84.13%	>99%	82.50%	81.92%	75.88%	82.25%	86.55%	88.61%	86.78%
12 to 15 % with dose 2	79.61%	>99%	78.83%	73.72%	70.82%	77.71%	82.34%	84.74%	80.31%

*National population will not equal sum of listed jurisdictions due to a small number of people counted in national population residing in some 'other' territories. Sum of state doses will not add to national total as some records are unable to be geocoded to a State or Territory.
Doses sourced from Australian Immunisation Register, population from ABS ERP June 2020

Vaccinations by location

Cumulative total doses administered vs eligible state populations*

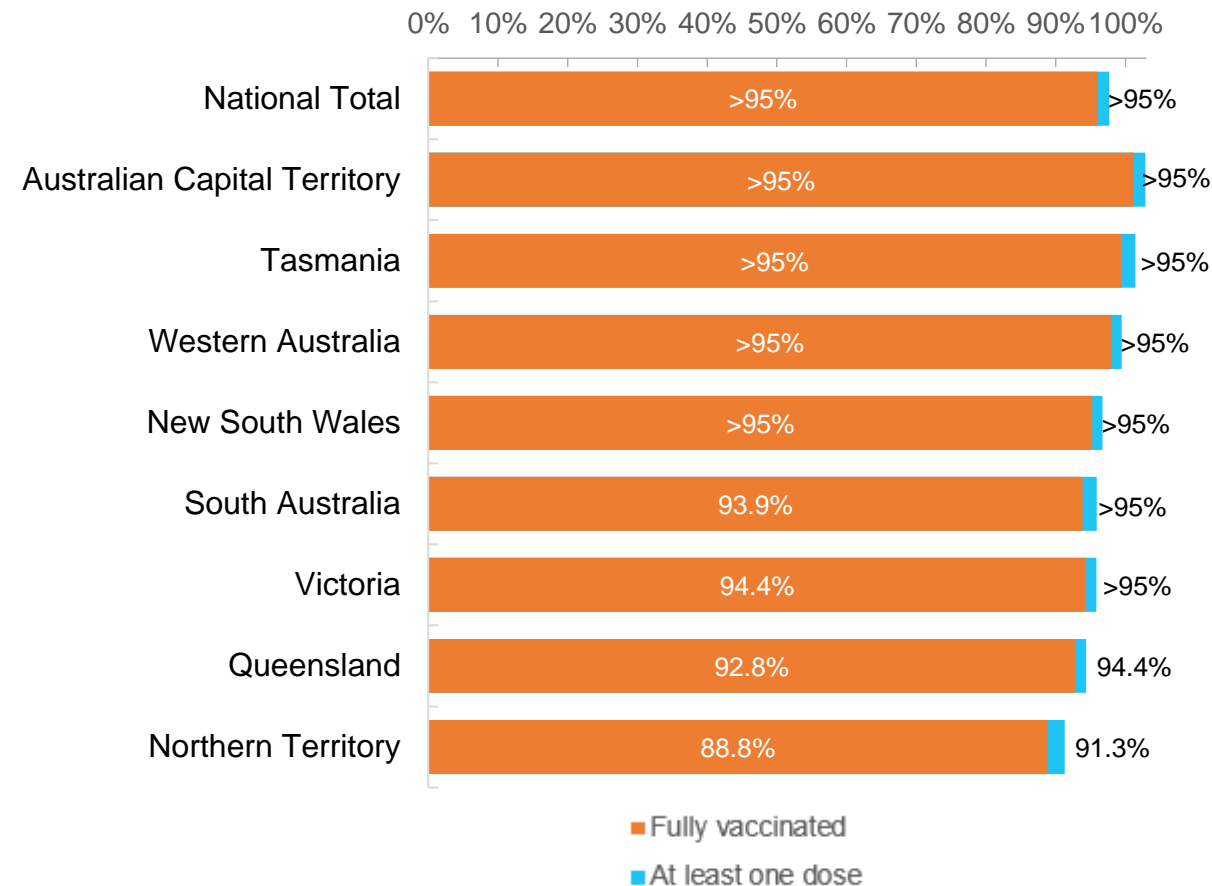


*Not an indication of percentage vaccinated, numbers will exceed 100 due to multiple doses required per person of the population. All doses are included for those aged 12 and above, and are based on vaccination provider location.

Data as at:
17 Jul 2022

Australia's COVID-19
Vaccine Roadmap

First and Second Doses by residential location



Aboriginal and Torres Strait Islander peoples

Number of people vaccinated

Data as at:
12 Jul 2022
Updated weekly

Australia's COVID-19
Vaccine Roadmap



444,318

people over the age of 16
have had at least one dose

85.0%

of people over the age of 16
have had at least one dose



426,102

people over the age of 16
are fully vaccinated

81.5%

of people over the age of 16 are
fully vaccinated



People aged 12 – 15 years

47,760

41,838

67.6%

59.3%

At least one dose

Fully vaccinated

178 Aboriginal community controlled health services (ACCHS)

0#

50

27

44

12

3

21

21

ACT

NSW

NT

QLD

SA

TAS

VIC

WA

Medicare Address State ^{##}	Individuals Dose 1	Individuals Dose 1 %	Individuals Dose 2	Individuals Dose 2 %
Australian Capital Territory	4,800	91.8%	4,681	89.6%
New South Wales	136,312	87.3%	133,265	85.4%
Northern Territory	41,316	89.8%	39,372	85.5%
Queensland	116,837	81.9%	111,512	78.1%
South Australia	20,128	80.7%	18,761	75.2%
Tasmania	13,904	88.9%	13,505	86.3%
Victoria	35,751	90.5%	34,958	88.5%
Western Australia	53,748	86.8%	50,161	81.0%
Unknown/Other Territories	21,522	70.5%	19,887	65.2%
Totals	444,318	85.0%	426,102	81.5%

Source: Australian Immunisation Register

*Identifying as Aboriginal and Torres Strait Islander is optional and the estimated population may be under reported.

**Includes all Aboriginal and Torres Strait Islander peoples who have received a vaccination, not limited to those administered in an ACCHS setting

#ACCHS in the ACT are currently operating as a Commonwealth Vaccine Clinics so not included to avoid double counting

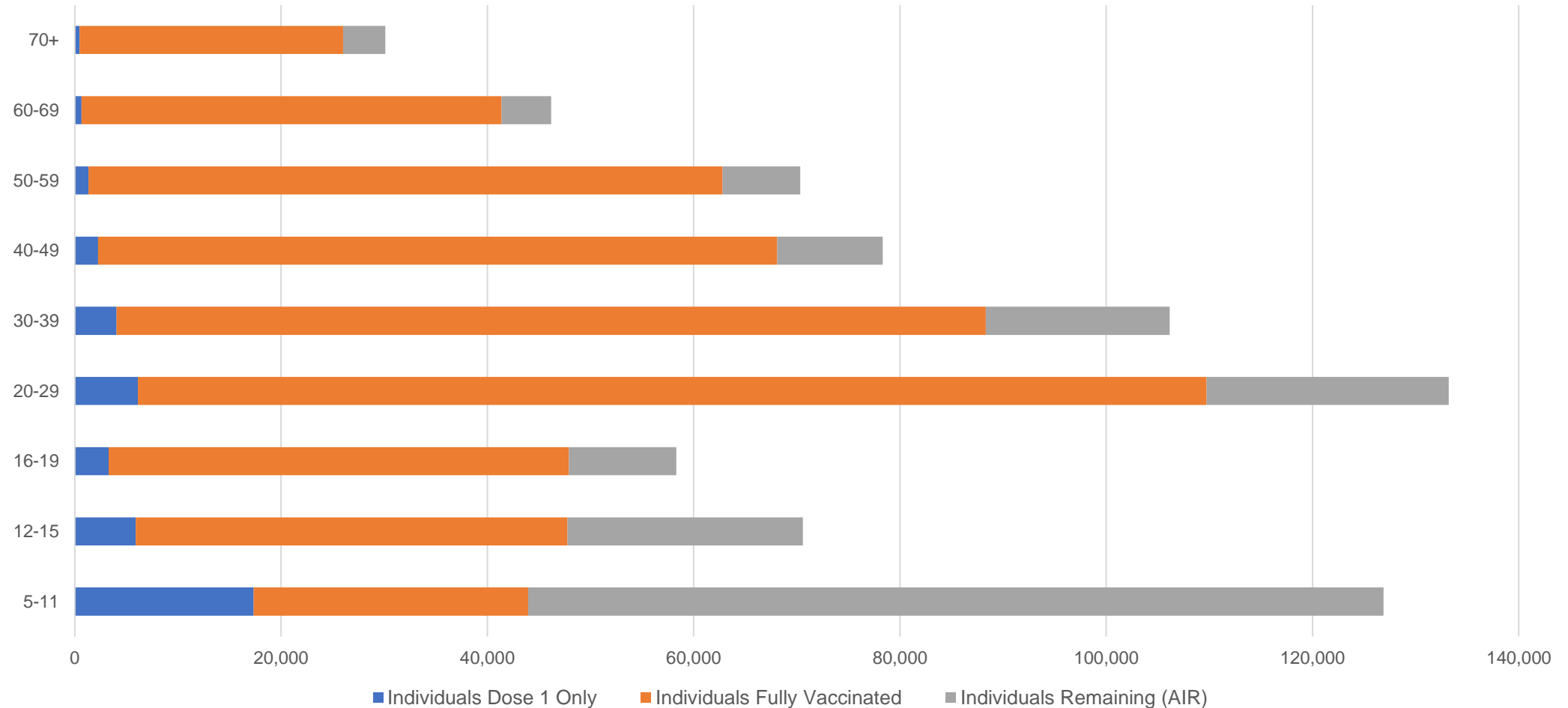
##The above table includes all identified Aboriginal and Torres Strait Islander people who are aged 16 and above by their state of residence.

Aboriginal and Torres Strait Islander peoples

Number of people vaccinated by age

Data as at:
12 Jul 2022
Updated weekly

Australia's COVID-19
Vaccine Roadmap



Source: Australian Immunisation Register

Commonwealth primary care

Data as at:
17 Jul 2022

Australia's COVID-19
Vaccine Roadmap



Primary care vaccine administration sites

5,693	122	178	3,613
GPs	CVCs	ACCHS	Pharmacies



38,531,046 total vaccine doses administered
primary care settings as at 17 July
+ 14,842 recorded in the last 24 hours

Primary care vaccinations by provider type

	Doses administered	Daily increase	7 day increase
General Practice* includes other Commonwealth	30,558,025	7,164	286,094
Pharmacy	7,973,021	7,678	286,888

NSW
13,279,739
(+4,573 daily increase)

VIC
9,549,569
(+3,752 daily increase)

QLD
7,444,990
(+3,484 daily increase)

WA
4,030,126
(+1,349 daily increase)

TAS
736,956
(+210 daily increase)

SA
2,329,861
(+770 daily increase)

ACT
613,295
(+171 daily increase)

NT
225,976
(<10 daily increase)

320,534

doses administered to persons
residing in other territories or with
missing residential information

*General practice includes Commonwealth Vaccination Clinics, Aboriginal Community Health Centres, Royal Flying Doctor Service and other Commonwealth vaccination facilities

Source: Australian Immunisation Register

Data as at:
17 Jul 2022

Commonwealth aged care and disability doses administered



1,322,266 (<10 last 24 hours)

Total vaccine doses administered in aged care and disability facilities as at 17 July

Number of doses administered as part of the Commonwealth aged and disability care rollout

NSW
573,009
(<10 daily increase)

VIC
248,218
(<10 daily increase)

QLD
210,585
(<10 daily increase)

WA
112,985
(<10 daily increase)

TAS
23,731
(<10 daily increase)

SA
86,574
(<10 daily increase)

ACT
17,968
(<10 daily increase)

NT
7,696
(<10 daily increase)

41,500

doses administered to persons
residing in other territories or with
missing residential information

*Sourced from the Australian Immunisation Register. Includes all persons vaccinated at participating residential aged care, disability and related industry settings.

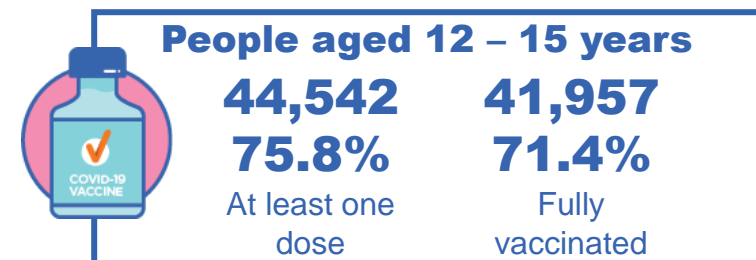
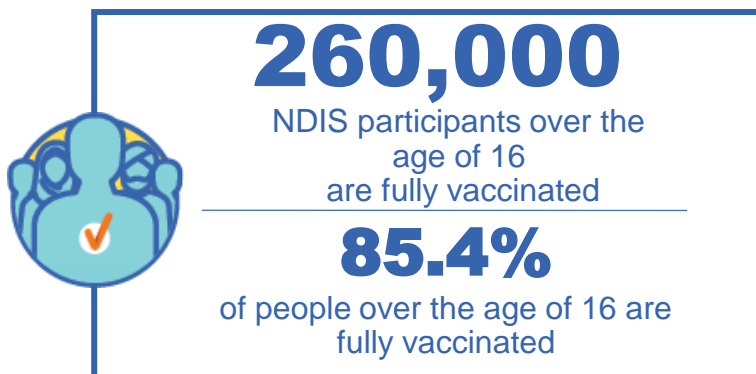
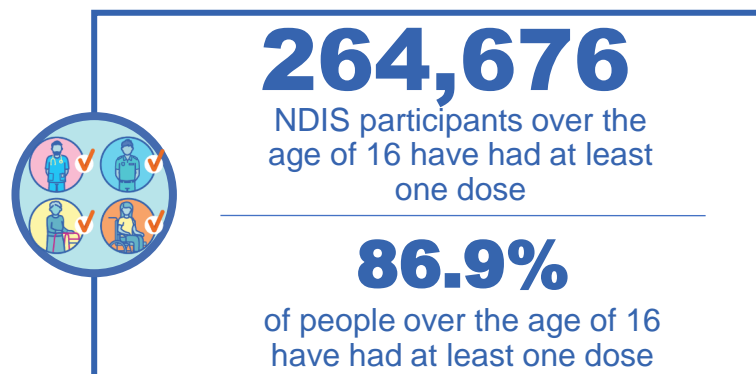
**State level breakdown indicates the residential location and may not align to the state in which the vaccination occurred.

Source: Australian Immunisation Register

National Disability Insurance Scheme (NDIS) reported vaccinations

Data as at:
14 July 2022
Updated weekly

Australia's COVID-19
Vaccine Roadmap



NDIS participant vaccinations

	People aged 16+ with at least one dose	People aged 16+ fully vaccinated	% People aged 16+ with at least one dose	% People aged 16+ fully vaccinated
ACT	4,971	4,909	89.0%	87.9%
NSW	80,935	79,680	87.5%	86.1%
NT	2,295	2,226	77.6%	75.3%
QLD	52,594	51,599	85.1%	83.5%
SA	21,694	21,201	84.6%	82.7%
TAS	6,619	6,467	87.2%	85.2%
VIC	70,267	69,110	88.1%	86.6%
WA	25,301	24,808	88.2%	86.5%
National	264,676	260,000	86.9%	85.4%

Source: Linkage between National Disability Insurance Agency data and the Australian Immunisation Register. Total NDIS participant numbers as at 30 June. Australian Immunisation Register data as at 13 July. Includes all participants regardless of residence type.

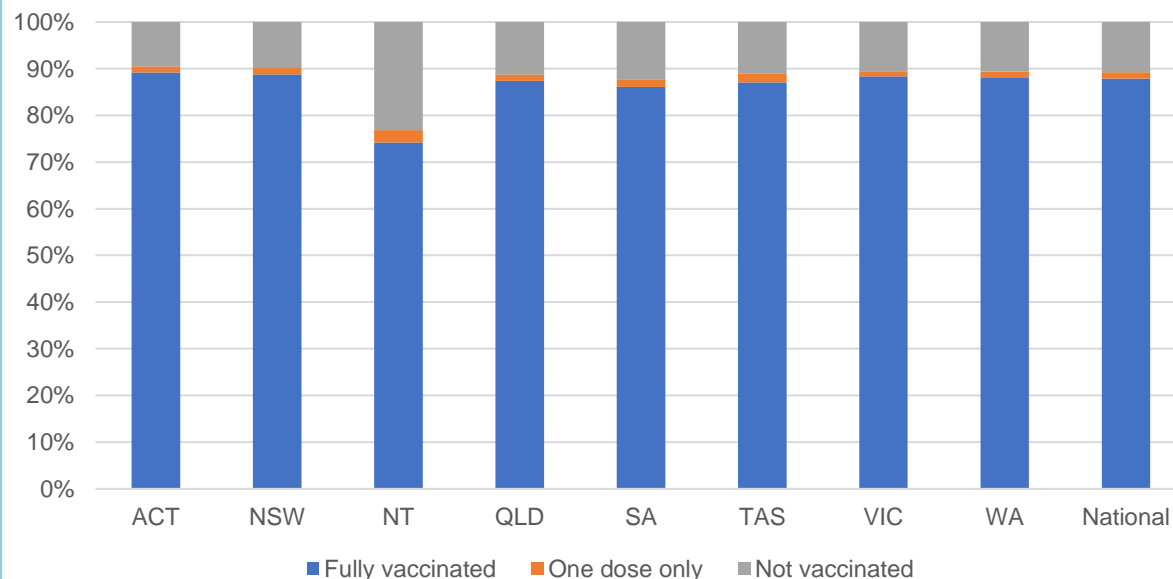
National Disability Insurance Scheme (NDIS) reported vaccinations

Data as at:
14 July 2022
Updated weekly

Australia's COVID-19
Vaccine Roadmap

NATIONAL	Total people with at least one dose	People fully vaccinated	Total number of individuals in cohort	% People with at least one dose	% People fully vaccinated
NDIS participants living in disability accommodation	21,273	20,955	23,858	89.2%	87.8%

NDIS participants in disability and aged care accommodation



Source: Linkage between National Disability Insurance Agency data and the Australian Immunisation Register. Includes participants residing in disability accommodation only.

Source: Total NDIS participant numbers as at 30 June. Participant data as at 12 July. Australian Immunisation Register data as at 13 July. Worker data as at 14 July.

NDIS workforce vaccinations

	NDIS workers with at least one dose	NDIS workers fully vaccinated	% NDIS workers with at least one dose	% NDIS workers fully vaccinated
NSW	128,234	123,322	98.3%	94.6%
VIC	117,646	114,405	98.5%	95.8%
QLD	71,568	70,714	97.9%	96.7%
WA	34,532	33,143	98.9%	95.0%
SA	35,309	33,574	98.5%	93.7%
TAS	12,410	12,025	98.5%	95.4%
ACT	12,343	12,316	99.8%	99.6%
NT	3,967	3,819	99.6%	95.9%
TOTAL	416,009	403,318	98.4%	95.4%

Source: the NDIS Commission has established a requirement for registered NDIS providers who provide intensive disability support services to report on the vaccination status of workers they employ, or otherwise engage, to deliver NDIS-funded supports and services, and who are required to be vaccinated in accordance with in-force state and territory public health orders. The statistics reflect data reported to the NDIS Commission by registered NDIS providers and should be considered indicative and subject to change

Note: Some registered NDIS providers are yet to report on the vaccination status of their workforce. The NDIS Commission is working with those providers around reporting requirements.

Remaining workers not included include those exempt from vaccination requirements, workers whose vaccination status is not yet verified by the provider (such as workers on leave) and provider reporting anomalies.

Residential aged care vaccination rollout

Residential aged care facilities status

175,388

People fully vaccinated

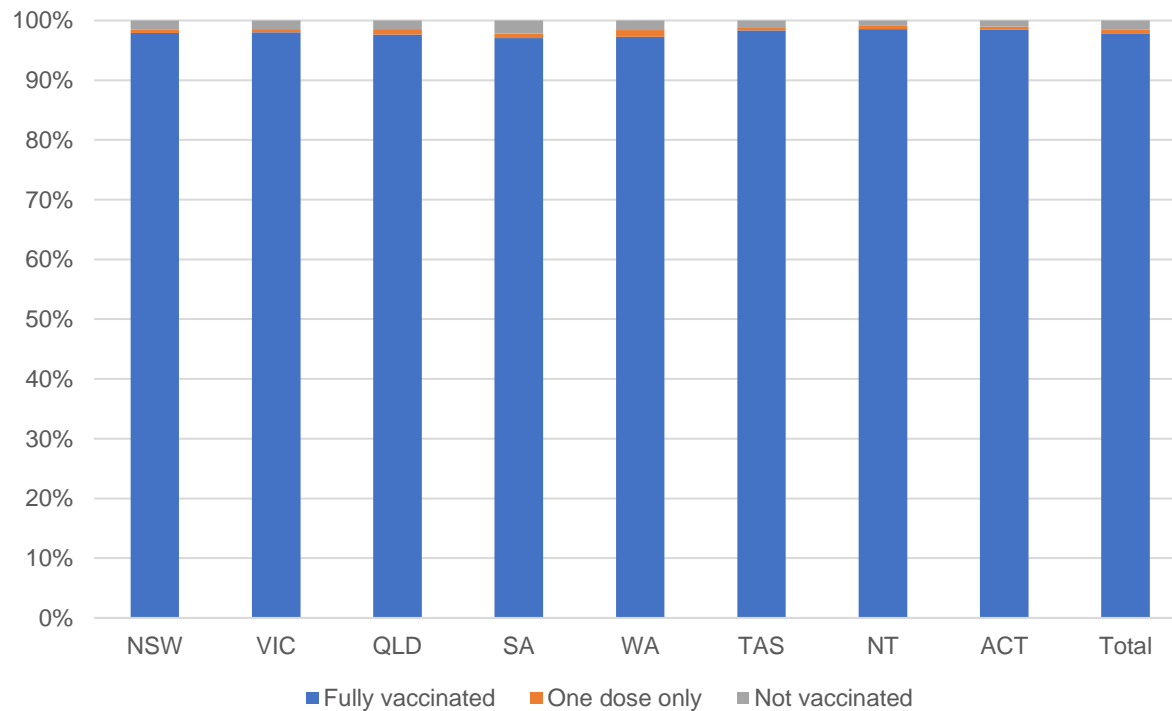
176,630

People with at least one dose

Australia's COVID-19 Vaccine Roadmap

Data as at:
14 July 2022
Updated weekly

Aged care resident vaccinations



Aged care worker vaccinations

Jurisdictions	Total workers with at least one dose	Workers fully vaccinated	% Workers with at least one dose	% Workers fully vaccinated
NSW	77,174	77,049	99.9%	99.7%
VIC	70,741	70,739	100.0%	100.0%
QLD	48,729	48,716	100.0%	100.0%
SA	26,657	26,647	100.0%	100.0%
WA	24,860	24,855	100.0%	100.0%
TAS	7,546	7,546	100.0%	100.0%
NT	925	925	100.0%	100.0%
ACT	2,965	2,965	100.0%	100.0%
Total	259,597	259,442	100.0%	99.9%

Source: Residential aged care provider self-reported COVID-19 vaccination information

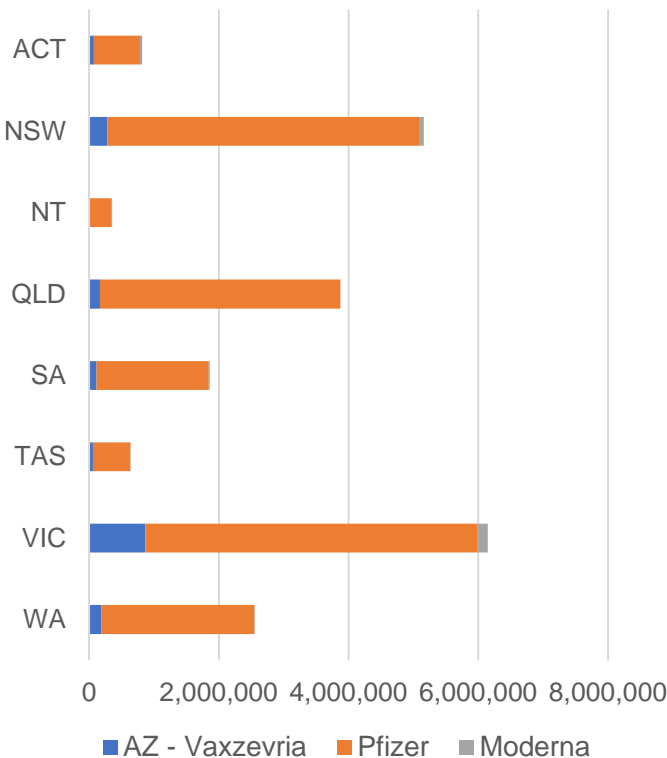
*Status updates are provided by facilities at least once per week. Reporting is updated Monday to Friday to encompass different facility updates being made on different days.

Data is sourced directly from Aged Care Service Providers and is not drawn or closely aligned with data from AIR due to inconsistencies and potential lags in uploading of records.

Data as at:
17 Jul 2022

Jurisdiction administered

Total vaccine doses administered in State and Territory clinics as at 17 July



21,402,621 total vaccine doses administered
in State and Territory clinics as at 17 July
+ **6,329** recorded in the last 24 hours
+ **70,860** recorded in the last 7 days

NSW
5,163,152
(+3,687 daily
increase)

VIC
6,151,115
(+11 daily
increase)

QLD
3,870,770
(+217 daily
increase)

WA
2,554,764
(+993 daily
increase)

TAS
635,252
(+778 daily
increase)

SA
1,863,638
(+568 daily
increase)

ACT
816,219
(+75 daily
increase)

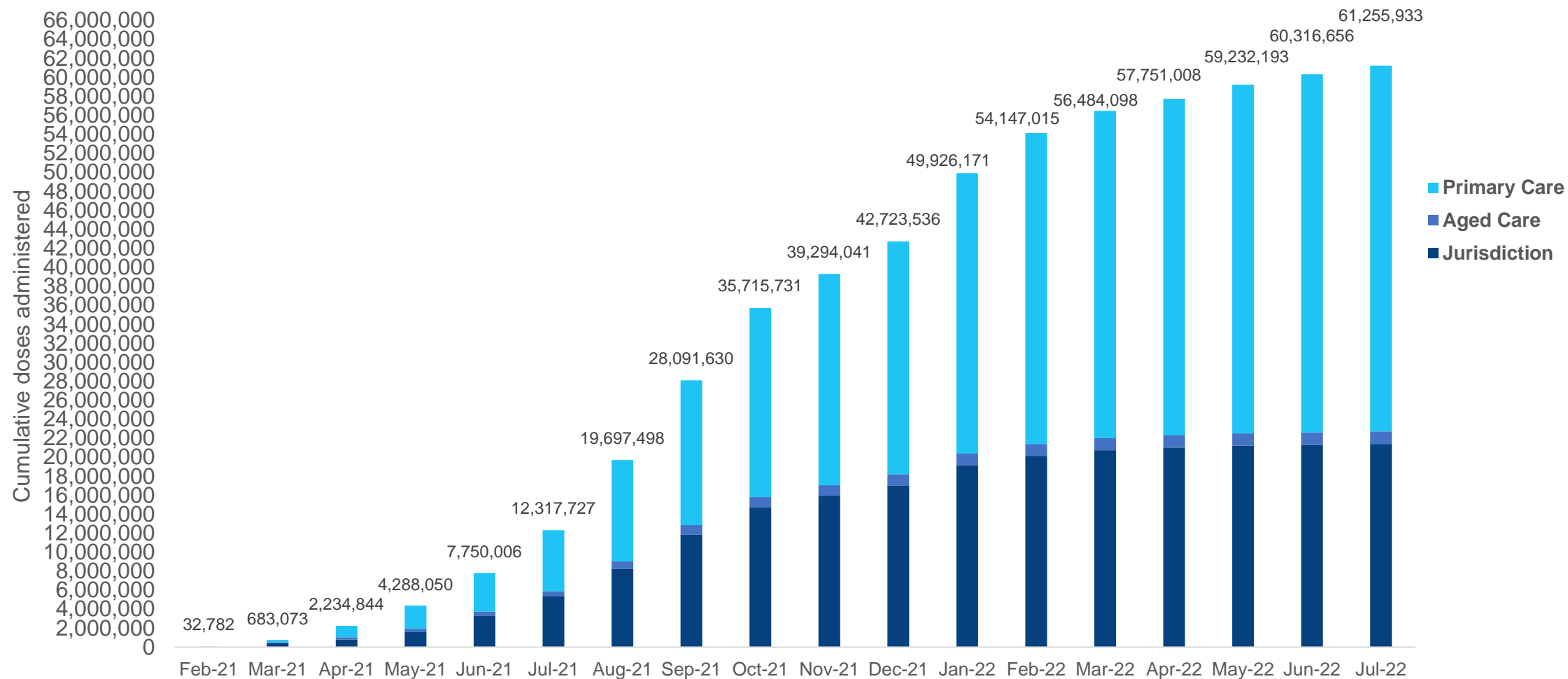
NT
347,711
(<10 daily
increase)

*Sourced from the Australian Immunisation Register. Numbers are calculated as difference in daily cumulative reported numbers to allow for historical corrections.

Source: Australian Immunisation Register

Cumulative doses administered by channel

Data as at:
17 Jul 2022

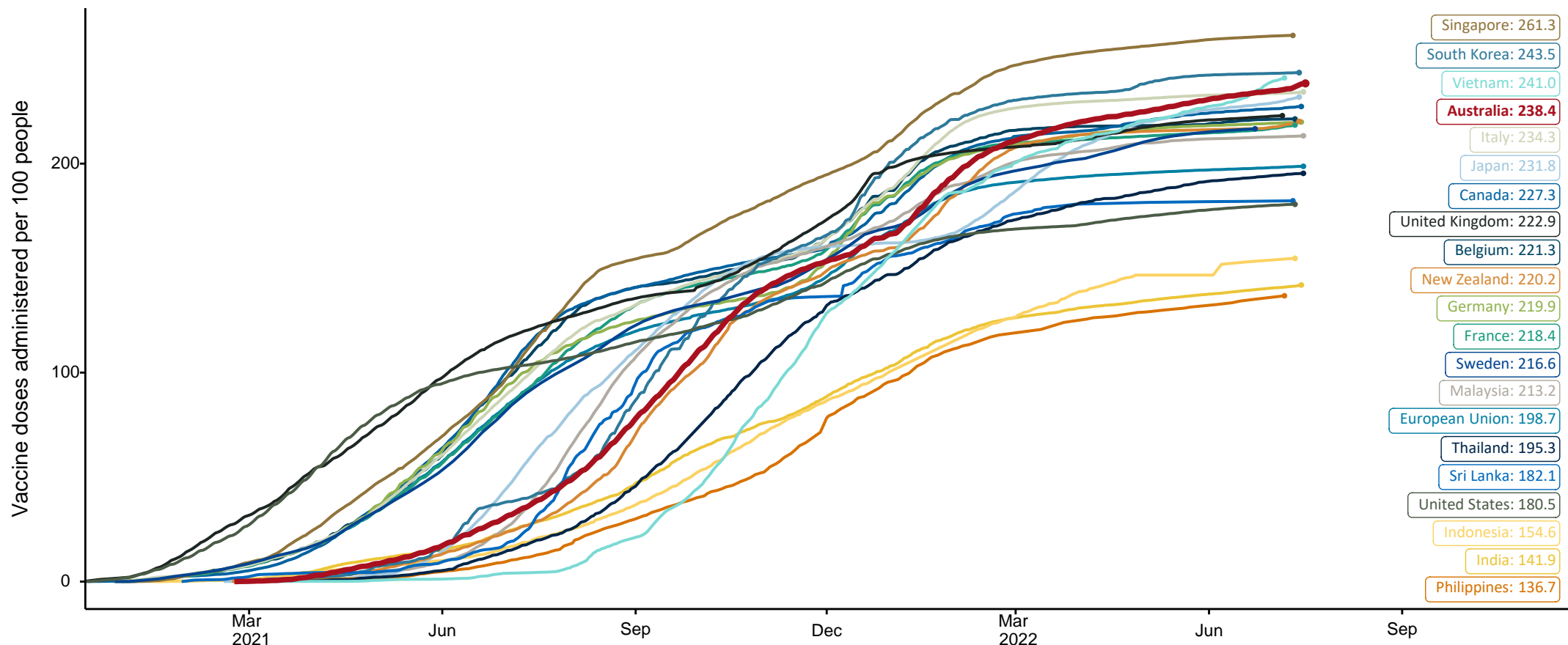


Source: Australian Immunisation Register

COVID-19 vaccine doses per 100, Australia and select countries

Data as at:
17 July 2022
Updated weekly

Australia's COVID-19
Vaccine Roadmap

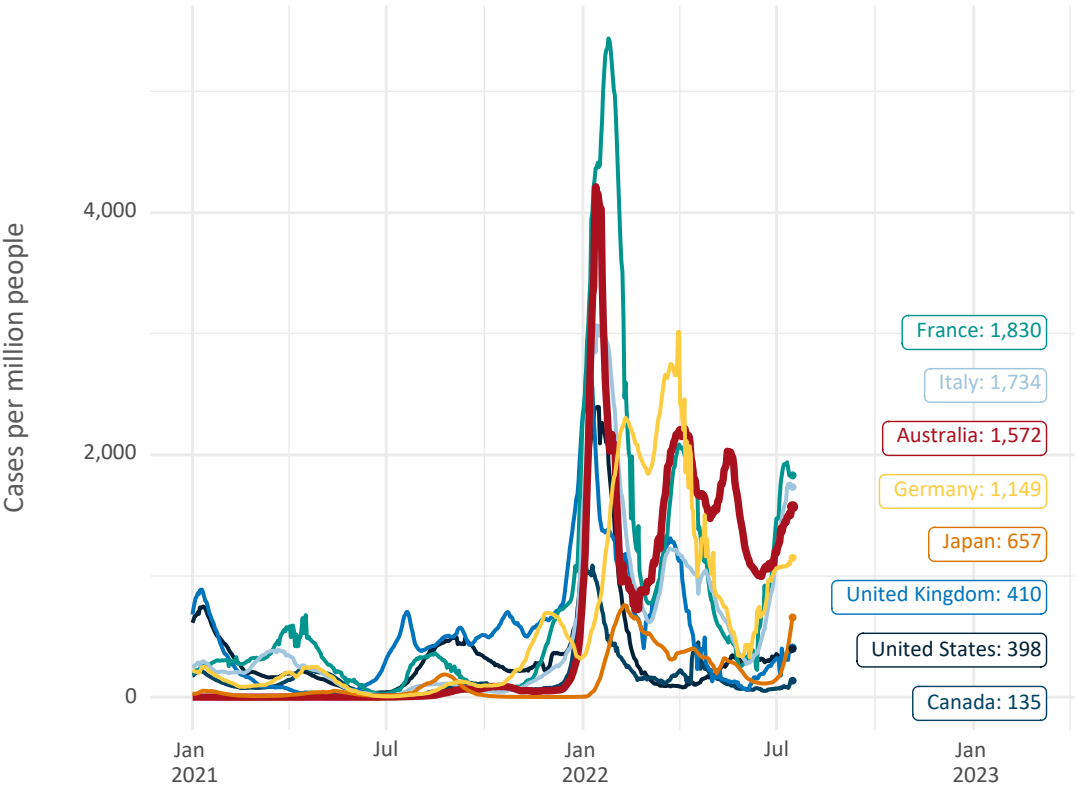


Note: From 11 January 2022, data for Australia includes all doses administered to people 5 and over. Prior to 11 January, data was for 12 and over.
Source: Department of Health (Australia), Our World in Data (international)
Latest data: 17 July

International data – COVID-19

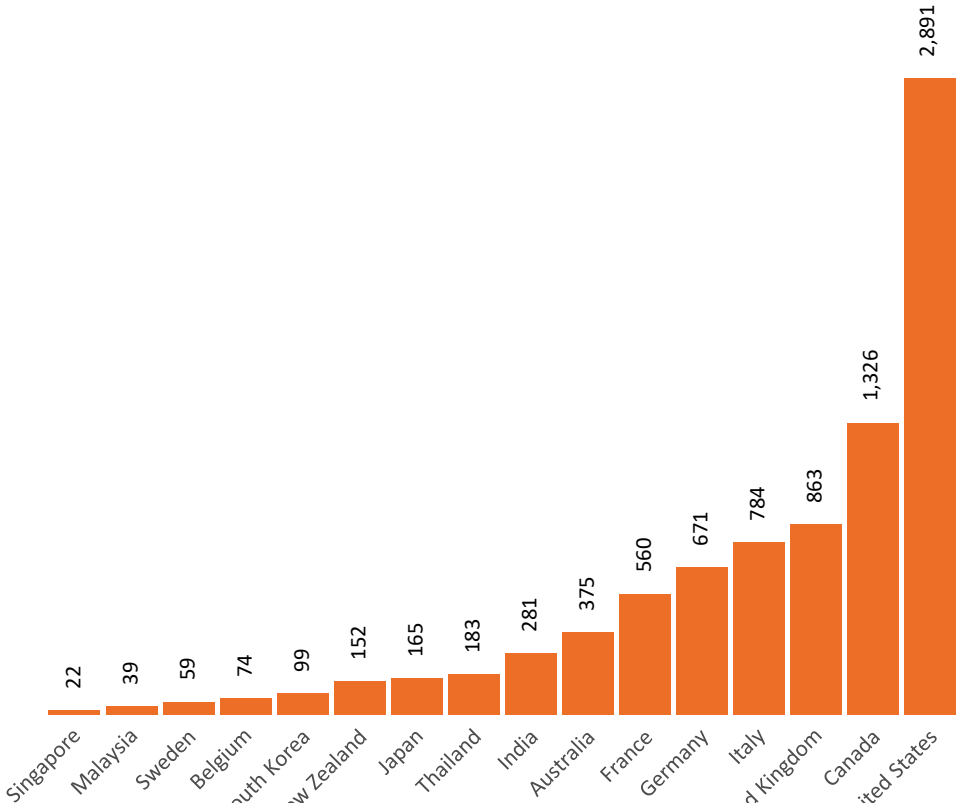
Data as at:
17 July 2022
Updated weekly

New daily cases per million since 2021, Australia and G7 countries
Smoothed - 7 day average



Source: OWID
Data downloaded: 18 Jul 2022 09:22
Latest data: 16 Jul 2022

COVID-19 deaths in past 7 days - Australia and select countries



Source: OWID
Data downloaded: 18 Jul 2022 09:22
Latest data: 16 Jul 2022